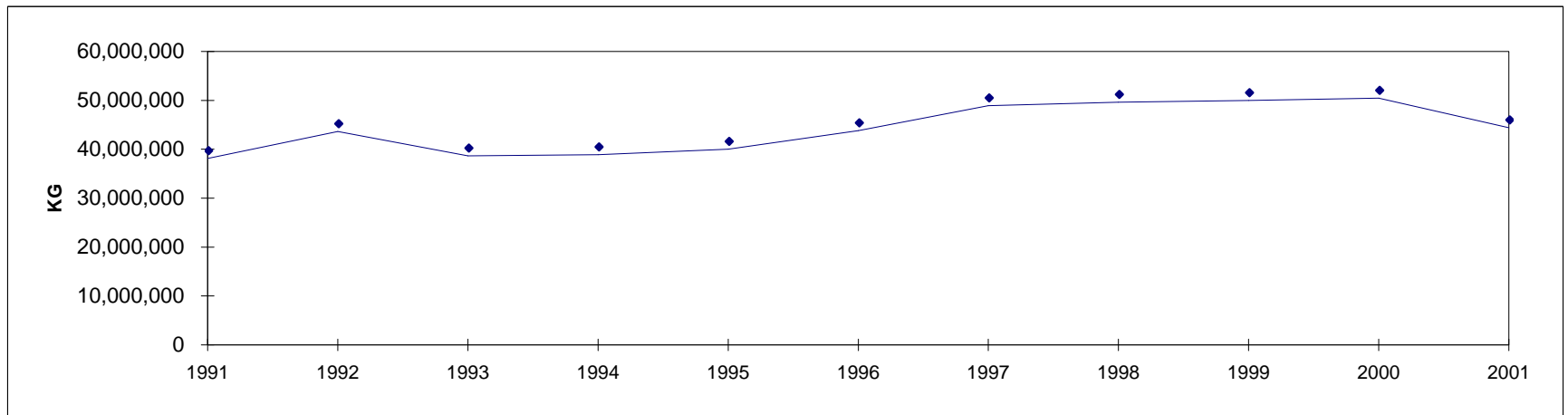


MATURE CHICKEN SLAUGHTERED IN REGISTERED STATIONS
NUMBERS AND EVISCERATED WEIGHT EQUIVALENT

MATURE CHICKEN - POULETS ADULTES

POULETS ADULTES ABATTUS AUX POSTES ENREGISTRÉS
NOMBRE ET ÉQUIVALENT EN POIDS ÉVISCÉRÉ

	CANNERS - CONSERVERIE		OTHERS - AUTRES		TOTAL		
	Head - Têtes	Kg	Head - Têtes	Kg	Head - Têtes	Kg	
1991	23,193,815	25,127,741	4,661,993	13,002,282	27,855,808	38,130,023	1991
1992	25,451,351	27,531,249	5,877,561	16,104,338	31,328,912	43,635,587	1992
1993	23,846,726	25,677,006	4,720,122	12,973,134	28,566,848	38,650,140	1993
1994	25,581,326	27,308,226	4,186,517	11,575,283	29,767,843	38,883,509	1994
1995	27,792,908	29,052,283	3,942,411	10,958,145	31,735,319	40,010,428	1995
1996	31,977,079	32,987,070	3,958,959	10,816,318	35,936,038	43,803,388	1996
1997	38,245,399	38,551,552	3,878,155	10,365,071	42,123,554	48,916,623	1997
1998	39,498,734	39,450,988	3,762,880	10,164,699	43,261,614	49,615,687	1998
1999	38,481,398	38,829,471	4,050,864	11,156,597	42,532,262	49,986,068	1999
2000	37,964,185	38,283,276	4,473,569	12,177,188	42,437,754	50,460,465	2000
2001	33,139,439	33,668,211	3,931,323	10,719,116	37,070,763	44,387,328	2001



MATURE CHICKEN SLAUGHTERED IN REGISTERED STATIONS
NUMBERS AND EVISCERATED WEIGHT EQUIVALENT

2001
MATURE CHICKEN - POULETS ADULTES

POULETS ADULTES ABATTUS AUX POSTES ENREGISTRÉS
NOMBRE ET ÉQUIVALENT EN POIDS ÉVISCÉRÉ

CANNERS - CONSERVERIE		OTHERS - AUTRES		TOTAL	
Head - Têtes	Kg	Head - Têtes	Kg	Head - Têtes	Kg

CANADA - CANADA

January	3,626,020	3,602,641	360,349	961,325	3,986,369	4,563,966	janvier
February	3,020,036	3,037,018	302,080	812,097	3,322,116	3,849,115	février
March	3,451,426	3,437,575	310,575	841,949	3,762,001	4,279,524	mars
April	2,750,504	2,844,908	364,814	977,250	3,115,318	3,822,158	avril
May	2,995,643	3,019,653	350,229	948,998	3,345,872	3,968,651	mai
June	2,797,448	2,803,829	307,797	853,739	3,105,245	3,657,568	juin
July	2,445,433	2,524,458	428,617	1,180,824	2,874,050	3,705,282	juillet
August	2,598,365	2,650,747	318,862	885,854	2,917,227	3,536,601	août
September	2,306,703	2,398,918	352,547	973,884	2,659,250	3,372,802	septembre
October	2,604,704	2,696,056	322,462	880,697	2,927,166	3,576,753	octobre
November	2,426,641	2,486,792	341,212	942,898	2,767,853	3,429,690	novembre
December	2,116,517	2,165,617	171,779	459,601	2,288,296	2,625,218	décembre
2001	33,139,440	33,668,212	3,931,323	10,719,116	37,070,763	44,387,328	2001
2000	37,964,185	38,283,277	4,473,569	12,177,188	42,437,754	50,460,465	2000

BRITISH COLUMBIA - COLOMBIE-BRITANNIQUE / ALBERTA

January	18,236	19,751	105,095	282,121	123,331	301,872	janvier
February	7,041	8,425	46,352	123,355	53,393	131,780	février
March	9,319	11,615	61,371	158,727	70,690	170,342	mars
April	11,736	12,923	97,158	253,017	108,894	265,940	avril
May	21,409	23,069	144,759	390,372	166,168	413,441	mai
June	24,610	27,595	56,516	158,365	81,126	185,960	juin
July	11,744	14,615	81,716	226,741	93,460	241,356	juillet
August	12,545	15,520	60,944	170,084	73,489	185,604	août
September	19,270	23,769	80,873	215,196	100,143	238,965	septembre
October	20,617	23,907	70,208	176,192	90,825	200,099	octobre
November	10,968	13,391	70,827	187,861	81,795	201,252	novembre
December	14,275	16,066	43,559	108,798	57,834	124,864	décembre
2001	181,770	210,646	919,378	2,450,829	1,101,148	2,661,475	2001
2000	1,146,694	1,276,445	1,084,414	2,886,060	2,231,108	4,162,505	2000

MATURE CHICKEN SLAUGHTERED IN REGISTERED STATIONS
NUMBERS AND EVISCERATED WEIGHT EQUIVALENT

2001
MATURE CHICKEN - POULETS ADULTES

POULETS ADULTES ABATTUS AUX POSTES ENREGISTRÉS
NOMBRE ET ÉQUIVALENT EN POIDS ÉVISCÉRÉ

CANNERS - CONSERVERIE		OTHERS - AUTRES		TOTAL	
Head - Têtes	Kg	Head - Têtes	Kg	Head - Têtes	Kg

SASKATCHEWAN / MANITOBA

January	353,572	347,288	21,433	59,654	375,005	406,942	janvier
February	231,046	242,229	15,333	44,942	246,379	287,171	février
March	301,801	307,068	31,263	88,924	333,064	395,992	mars
April	875	982	16,425	44,207	17,300	45,189	avril
May	14,219	15,930	2,059	5,560	16,278	21,490	mai
June	35,470	28,166	11,062	30,420	46,532	58,586	juin
July	76,282	70,098	25,875	73,161	102,157	143,259	juillet
August	57,851	58,523	17,405	52,162	75,256	110,685	août
September	95,803	88,151	10,263	28,580	106,066	116,731	septembre
October	91,358	84,038	27,274	81,392	118,632	165,430	octobre
November	108,435	98,754	21,117	63,081	129,552	161,835	novembre
December	24,291	20,021	2,328	6,080	26,619	26,101	décembre
2001	1,391,003	1,361,248	201,837	578,163	1,592,840	1,939,411	2001
2000	3,568,598	3,470,860	231,887	641,009	3,800,485	4,111,869	2000

ONTARIO

January	2,833,706	2,808,692	84,244	218,587	2,917,950	3,027,279	janvier
February	2,522,343	2,518,332	162,343	430,481	2,684,686	2,948,813	février
March	2,799,557	2,798,373	135,498	356,989	2,935,055	3,155,362	mars
April	2,421,254	2,512,028	157,564	421,464	2,578,818	2,933,492	avril
May	2,522,693	2,534,612	124,344	333,681	2,647,037	2,868,293	mai
June	2,372,320	2,400,476	131,846	361,719	2,504,166	2,762,195	juin
July	2,036,111	2,117,036	198,056	532,632	2,234,167	2,649,668	juillet
August	2,218,469	2,253,315	145,984	402,915	2,364,453	2,656,230	août
September	1,825,425	1,921,790	156,396	427,560	1,981,821	2,349,350	septembre
October	2,111,228	2,202,079	142,228	387,158	2,253,456	2,589,237	octobre
November	1,963,290	2,042,839	158,068	432,701	2,121,358	2,475,540	novembre
December	1,877,479	1,916,299	97,941	268,074	1,975,420	2,184,373	décembre
2001	27,503,875	28,025,871	1,694,512	4,573,961	29,198,387	32,599,832	2001
2000	27,279,537	27,614,506	1,967,089	5,362,414	29,246,626	32,976,920	2000

QUEBEC - QUÉBEC

January	367,523	375,791	131,015	359,147	498,538	734,938	janvier
February	237,921	247,403	76,072	207,914	313,993	455,317	février
March	340,749	320,519	67,237	196,179	407,986	516,698	mars
April	298,786	303,255	93,667	258,562	392,453	561,817	avril
May	428,096	438,370	79,067	219,385	507,163	657,755	mai
June	365,048	347,592	108,373	303,235	473,421	650,827	juin
July	321,296	322,709	122,970	348,290	444,266	670,999	juillet
August	266,993	273,941	85,525	236,735	352,518	510,676	août
September	340,511	329,695	101,466	293,111	441,977	622,806	septembre
October	361,090	363,422	82,752	235,955	443,842	599,377	octobre
November	321,294	307,955	86,645	248,402	407,939	556,357	novembre
December	198,158	210,798	27,951	76,649	226,109	287,447	décembre
2001	3,847,465	3,841,450	1,062,740	2,983,564	4,910,205	6,825,014	2001
2000	5,678,684	5,611,991	1,111,273	3,068,637	6,789,957	8,680,628	2000

**MATURE CHICKEN SLAUGHTERED IN REGISTERED STATIONS
NUMBERS AND EVISCERATED WEIGHT EQUIVALENT**

2001

MATURE CHICKEN - POULETS ADULTES

**POULETS ADULTES ABATTUS AUX POSTES ENREGISTRÉS
NOMBRE ET ÉQUIVALENT EN POIDS ÉVISCÉRÉ**

CANNERS - CONSERVERIE		OTHERS - AUTRES		TOTAL	
Head - Têtes	Kg	Head - Têtes	Kg	Head - Têtes	Kg

ATLANTIC PROVINCES - PROVINCES DE L'ATLANTIQUE

January	52,983	51,119	18,562	41,816	71,545	92,935	janvier
February	21,685	20,629	1,980	5,405	23,665	26,034	février
March	0	0	15,206	41,130	15,206	41,130	mars
April	17,853	15,720	0	0	17,853	15,720	avril
May	9,226	7,672	0	0	9,226	7,672	mai
June	0	0	0	0	0	0	juin
July	0	0	0	0	0	0	juillet
August	42,507	49,448	9,004	23,958	51,511	73,406	août
September	25,694	35,513	3,549	9,437	29,243	44,950	septembre
October	20,411	22,610	0	0	20,411	22,610	octobre
November	22,654	23,853	4,555	10,853	27,209	34,706	novembre
December	2,314	2,433	0	0	2,314	2,433	décembre
2001	215,327	228,997	52,856	132,599	268,183	361,596	2001
2000	290,672	309,475	78,906	219,068	369,578	528,543	2000

Atlantic provinces include: New Brunswick, Nova Scotia
Prince Edward Island and Newfoundland

Provinces de l'atlantique comprennent: le Nouveau-Brunswick,
la Nouvelle-Écosse, l'Île-du-Prince-Édouard et Terre-Neuve.

Printed as of / Imprimé le: 2004/09/07 1:55 PM

Source: Canadian Food Inspection Agency, as compiled by AAFC, AID, Poultry Section
Agence canadienne d'inspection des aliments, compilé par AAC, DIA, Section de la volaille