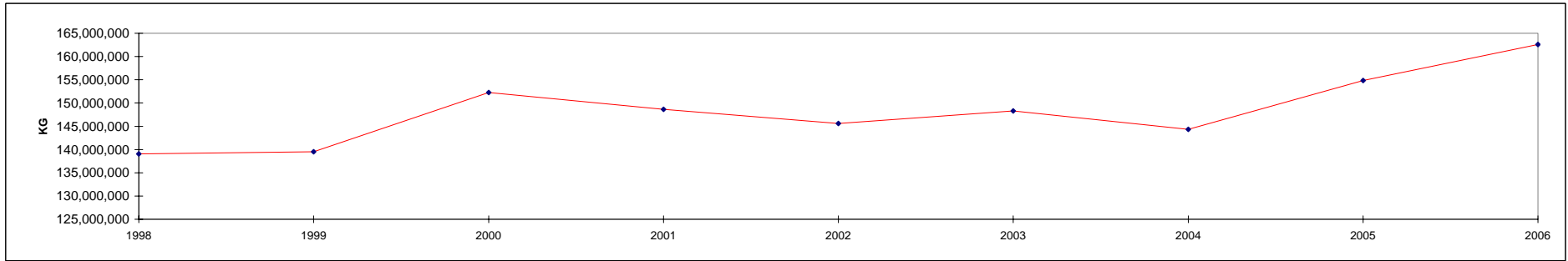


	5 kg and under 5 kg et moins		Over 5 and but not more than 7 kg Plus de 5 kg mais pas plus de 7 kg		Over 7 and but not more than 9 kg Plus de 7 kg mais pas plus de 9 kg		Over 9 kg but not more than 11 kg Plus de 9 kg mais pas plus de 11 kg		Over 11 kg Plus de 11 kg		MATURE TURKEY DINDON ADULTE		TOTAL		
	Head - Têtes	Kg	Head - Têtes	Kg	Head - Têtes	Kg	Head - Têtes	Kg	Head - Têtes	Kg	Head - Têtes	Kg	Head - Têtes	Kg	
1998	7,220,073	31,365,099	5,731,412	35,228,355	789,838	6,356,707	3,343,350	33,329,833	2,096,181	24,738,643	819,146	8,033,105	20,000,000	139,051,742	1998
1999	7,603,173	32,550,563	5,202,675	32,238,068	1,241,877	10,055,106	2,585,644	25,851,754	2,701,793	31,858,210	727,270	6,974,543	20,062,432	139,528,244	1999
2000	7,455,708	32,665,938	5,854,293	36,580,402	1,202,914	9,680,526	2,480,529	24,665,020	3,469,849	41,517,824	732,327	7,149,077	21,195,620	152,258,787	2000
2001	6,399,249	28,359,864	5,579,876	34,814,126	993,016	7,890,311	2,827,187	28,331,661	3,552,265	42,228,298	727,274	7,023,172	20,078,867	148,647,432	2001
2002	5,954,972	25,976,959	5,442,172	32,758,371	1,492,229	11,844,629	2,073,443	20,915,454	3,734,923	45,547,656	865,051	8,582,666	19,562,790	145,625,735	2002
2003	5,719,634	24,825,446	5,697,549	34,284,343	1,441,234	11,346,191	2,006,217	20,216,158	4,097,783	49,946,699	763,950	7,658,685	19,726,367	148,277,522	2003
2004	5,507,870	24,094,551	6,044,763	36,304,671	1,612,809	12,772,886	1,628,475	16,074,949	3,794,235	46,628,725	830,496	8,486,870	19,418,648	144,362,652	2004
2005	5,525,747	24,202,978	5,899,750	35,589,120	2,092,797	16,543,226	2,172,392	21,624,278	3,900,912	48,625,338	826,124	8,242,964	20,417,722	154,827,904	2005
2006	5,706,378	25,072,670	5,896,383	35,410,441	2,136,803	16,719,288	1,588,423	16,244,314	4,829,152	59,892,124	907,787	9,237,470	21,064,926	162,576,307	2006



5 kg and under 5 kg et moins		Over 5 and but not more than 7 kg Plus de 5 kg mais pas plus de 7 kg		Over 7 and but not more than 9 kg Plus de 7 kg mais pas plus de 9 kg		Over 9 kg but not more than 11 kg Plus de 9 kg mais pas plus de 11 kg		Over 11 kg Plus de 11 kg		MATURE TURKEY DINDON ADULTE		TOTAL	
Head - Têtes	Kg	Head - Têtes	Kg	Head - Têtes	Kg	Head - Têtes	Kg	Head - Têtes	Kg	Head - Têtes	Kg	Head - Têtes	Kg

CANADA

January	355,085	1,579,574	472,014	2,796,784	150,512	1,152,491	57,507	578,225	375,620	4,815,987	82,894	950,723	1,493,632	11,873,784	janvier
February	323,554	1,406,259	334,982	1,998,099	103,918	810,952	100,189	1,005,415	370,220	4,616,906	66,430	680,261	1,299,293	10,517,892	février
March	500,335	2,185,463	407,149	2,443,816	149,752	1,163,182	102,096	1,050,761	392,685	4,928,836	52,254	540,020	1,604,271	12,312,078	mars
April	524,558	2,321,378	473,642	2,835,794	177,608	1,403,819	132,394	1,370,756	302,019	3,768,886	59,062	586,822	1,669,283	12,287,455	avril
May	475,011	2,076,612	520,410	3,089,391	176,200	1,361,588	120,357	1,238,236	368,025	4,610,814	59,583	621,654	1,719,586	12,998,295	mai
June	553,000	2,407,710	494,625	3,007,448	154,178	1,217,301	129,771	1,332,829	478,643	5,946,419	63,468	650,696	1,873,685	14,562,403	juin
July	451,956	1,996,019	444,262	2,678,427	204,057	1,589,422	190,739	1,984,479	408,518	5,054,756	82,756	820,372	1,782,288	14,123,475	juillet
August	528,003	2,308,280	484,145	2,863,886	215,814	1,693,875	121,634	1,251,035	383,091	4,660,659	104,633	1,006,991	1,837,320	13,784,726	août
September	608,268	2,691,593	557,362	3,379,187	261,720	2,045,903	168,405	1,728,348	429,964	5,204,949	117,923	1,150,482	2,143,642	16,200,462	septembre
October	394,531	1,778,608	526,843	3,186,320	150,491	1,187,302	162,207	1,645,460	480,367	5,909,438	77,681	784,015	1,792,120	14,491,143	octobre
November	454,199	1,951,056	447,934	2,690,898	148,861	1,156,338	122,748	1,247,701	462,706	5,769,086	90,983	941,739	1,727,431	13,756,818	novembre
December	537,880	2,370,120	733,014	4,440,391	243,692	1,937,115	180,378	1,811,070	377,295	4,605,387	50,120	503,694	2,122,379	15,667,777	décembre
2006	5,706,380	25,072,672	5,896,382	35,410,441	2,136,803	16,719,288	1,588,425	16,244,315	4,829,153	59,892,123	907,787	9,237,469	21,064,930	162,576,308	2006
2005	5,525,747	24,202,979	5,899,750	35,589,120	2,092,797	16,543,225	2,172,392	21,624,279	3,900,912	48,625,338	826,124	8,242,964	20,417,722	154,827,905	2005

WESTERN PROVINCES - PROVINCES DE L'OUEST

January	77,741	359,875	169,272	1,077,938	128,464	981,336	33,061	325,817	19,927	230,662	5,104	57,231	433,569	3,032,859	janvier
February	40,763	187,179	155,184	970,965	82,846	643,437	62,796	614,309	0	0	10,852	110,521	352,441	2,526,411	février
March	72,360	329,742	152,069	979,715	104,859	809,369	59,874	618,379	8,264	105,067	2,813	26,929	400,239	2,869,201	mars
April	106,516	477,688	221,344	1,400,267	94,679	748,486	38,992	385,812	3,430	43,126	2,853	27,688	467,814	3,083,067	avril
May	70,153	320,808	188,777	1,180,308	107,924	831,895	72,061	740,765	30,609	372,218	6,018	56,313	475,542	3,502,307	mai
June	60,925	271,900	221,535	1,407,772	111,052	869,104	110,242	1,129,483	67,583	799,361	2,597	29,341	573,934	4,506,961	juin
July	80,509	370,008	208,816	1,307,018	138,116	1,097,516	128,383	1,325,582	58,933	691,804	4,651	48,224	619,408	4,840,152	juillet
August	96,290	434,581	195,634	1,222,844	104,697	814,276	87,948	900,195	66,073	770,878	29,740	317,213	580,382	4,459,987	août
September	106,576	479,840	242,793	1,555,559	127,427	998,689	114,556	1,179,116	82,492	972,876	21,280	203,148	695,124	5,389,228	septembre
October	69,664	317,642	236,985	1,507,514	105,937	838,847	85,389	850,061	157,872	1,875,793	1,578	13,320	657,425	5,403,177	octobre
November	88,035	395,255	191,919	1,203,571	98,836	763,897	67,165	676,224	76,948	942,060	12,725	123,268	535,628	4,104,275	novembre
December	105,654	470,081	271,216	1,696,670	115,460	912,775	107,849	1,066,837	38,820	458,032	1,216	12,465	640,215	4,616,860	décembre
2006	975,186	4,414,599	2,455,544	15,510,141	1,320,297	10,309,627	968,316	9,812,580	610,951	7,261,877	101,427	1,025,661	6,431,721	48,334,485	2006
2005	890,258	3,990,982	2,698,382	17,038,890	1,224,961	9,691,440	1,428,020	14,002,723	146,244	1,742,881	88,328	884,316	6,476,193	47,351,232	2005

5 kg and under 5 kg et moins		Over 5 and but not more than 7 kg Plus de 5 kg mais pas plus de 7 kg		Over 7 and but not more than 9 kg Plus de 7 kg mais pas plus de 9 kg		Over 9 kg but not more than 11 kg Plus de 9 kg mais pas plus de 11 kg		Over 11 kg Plus de 11 kg		MATURE TURKEY DINDON ADULTE		TOTAL	
Head - Têtes	Kg	Head - Têtes	Kg	Head - Têtes	Kg	Head - Têtes	Kg	Head - Têtes	Kg	Head - Têtes	Kg	Head - Têtes	Kg

ONTARIO

January	138,032	595,565	116,927	671,168	14,274	112,179	16,189	167,303	254,654	3,310,748	76,719	883,508	616,795	5,740,471	janvier
February	141,648	567,067	85,048	506,893	18,285	145,246	36,462	381,187	263,519	3,304,661	48,251	501,838	593,213	5,406,892	février
March	237,630	1,004,747	88,991	557,436	38,782	309,357	40,178	409,995	267,720	3,378,483	44,537	468,577	717,838	6,128,595	mars
April	192,452	846,964	136,560	772,448	68,411	545,594	70,067	738,604	195,829	2,462,898	53,487	532,701	716,806	5,899,209	avril
May	255,491	1,072,775	114,941	658,070	57,431	450,547	45,130	462,859	215,502	2,721,595	48,544	519,431	737,039	5,885,277	mai
June	295,607	1,247,323	145,574	899,729	41,336	334,644	12,141	125,063	295,311	3,738,248	53,949	553,497	843,918	6,898,504	juin
July	190,775	823,837	118,100	724,398	48,218	356,876	43,707	459,698	232,104	2,944,510	70,834	698,689	703,738	6,008,008	juillet
August	230,357	982,787	123,343	726,667	96,092	769,072	18,410	192,118	233,718	2,881,666	73,185	674,822	775,105	6,227,132	août
September	266,133	1,155,663	154,120	942,556	127,594	995,578	50,691	516,459	232,763	2,872,849	87,330	863,748	918,631	7,346,853	septembre
October	171,372	765,634	138,163	841,919	39,490	310,767	62,464	645,282	197,770	2,522,023	70,605	714,709	679,864	5,800,334	octobre
November	226,245	926,656	139,008	843,230	47,743	375,211	43,604	443,203	257,912	3,276,106	70,791	743,487	785,303	6,607,713	novembre
December	239,161	1,036,246	226,005	1,384,716	121,666	976,115	65,999	673,706	219,096	2,715,123	45,233	456,251	917,160	7,242,157	décembre
2006	2,584,903	11,025,264	1,586,780	9,529,230	719,322	5,681,186	505,042	5,215,297	2,865,898	36,128,910	743,465	7,611,258	9,005,410	75,191,145	2006
2005	2,590,244	11,158,025	1,461,374	8,731,019	696,762	5,522,484	574,849	5,908,176	2,541,933	31,830,649	675,853	6,782,813	8,541,015	69,933,166	2005

QUEBEC - QUÉBEC

January	119,754	540,061	181,274	1,023,831	7,774	58,976	8,257	85,105	101,039	1,274,577	1,071	9,984	419,169	2,992,534	janvier
February	103,355	477,798	91,099	501,268	2,787	22,269	931	9,919	106,701	1,312,245	7,327	67,902	312,200	2,391,401	février
March	136,364	615,019	147,156	797,332	6,111	44,456	2,044	22,387	116,701	1,445,286	4,904	44,514	413,280	2,968,994	mars
April	160,371	711,064	113,803	652,989	14,518	109,739	23,335	246,340	102,760	1,262,862	2,722	26,433	417,509	3,009,427	avril
May	97,950	459,340	202,964	1,175,525	10,845	79,146	3,166	34,612	121,914	1,517,001	5,021	45,910	441,860	3,311,534	mai
June	157,806	719,498	105,424	581,154	1,790	13,553	7,388	78,283	115,749	1,408,810	6,922	67,858	395,079	2,869,156	juin
July	140,297	621,865	102,655	569,860	17,723	135,030	18,649	199,199	117,481	1,418,442	7,271	73,459	404,076	3,017,855	juillet
August	161,344	712,841	164,081	908,269	15,025	110,527	15,276	158,722	83,300	1,008,115	1,708	14,956	440,734	2,913,430	août
September	197,552	886,118	128,280	707,674	6,699	51,636	3,158	32,773	114,709	1,359,224	9,313	83,586	459,711	3,121,011	septembre
October	93,988	421,999	137,596	758,756	5,064	37,688	14,354	150,117	124,725	1,511,622	5,498	55,986	381,225	2,936,168	octobre
November	113,320	506,410	99,359	548,549	2,282	17,230	11,979	128,454	127,846	1,550,920	7,467	74,984	362,253	2,826,547	novembre
December	134,312	602,386	199,651	1,162,058	6,566	48,225	6,530	70,527	119,379	1,432,232	3,671	34,978	470,109	3,350,406	décembre
2006	1,616,413	7,274,399	1,673,342	9,387,265	97,184	728,475	115,067	1,216,438	1,352,304	16,501,336	62,895	600,550	4,917,205	35,708,463	2006
2005	1,597,816	7,118,822	1,567,796	8,864,491	171,074	1,329,301	169,523	1,713,380	1,212,735	15,051,808	61,943	575,835	4,780,887	34,653,637	2005

ATLANIC PROVINCES - PROVINCES DE L'ATLANTIQUE

January	19,558	84,073	4,541	23,847	0	0	0	0	0	0	0	0	24,099	107,920	janvier
February	37,788	174,215	3,651	18,973	0	0	0	0	0	0	0	0	41,439	193,188	février
March	53,981	235,955	18,933	109,333	0	0	0	0	0	0	0	0	72,914	345,288	mars
April	65,219	285,662	1,935	10,090	0	0	0	0	0	0	0	0	67,154	295,752	avril
May	51,417	223,689	13,728	75,488	0	0	0	0	0	0	0	0	65,145	299,177	mai
June	38,662	168,989	22,092	118,793	0	0	0	0	0	0	0	0	60,754	287,782	juin
July	40,375	180,309	14,691	77,151	0	0	0	0	0	0	0	0	55,066	257,460	juillet
August	40,012	178,071	1,087	6,106	0	0	0	0	0	0	0	0	41,099	184,177	août
September	38,007	169,972	32,169	173,398	0	0	0	0	0	0	0	0	70,176	343,370	septembre
October	59,507	273,333	14,099	78,131	0	0	0	0	0	0	0	0	73,606	351,464	octobre
November	26,599	122,735	17,648	95,548	0	0	0	0	0	0	0	0	44,247	218,283	novembre
December	58,753	261,407	36,142	196,947	0	0	0	0	0	0	0	0	94,895	458,354	décembre
2006	529,878	2,358,410	180,716	983,805	0	0	0	0	0	0	0	0	710,594	3,342,215	2006
2005	447,429	1,935,150	172,198	954,720	0	0	0	0	0	0	0	0	619,627	2,889,870	2005

WESTERN PROVINCES INCLUDE:  
British Columbia, Alberta, Saskatchewan, Manitoba

LES PROVINCES DE L'OUEST COMPRENNENT:  
La Colombie-Britannique, l'Alberta, la Saskatchewan, le Manitoba

ATLANTIC PROVINCES INCLUDE:  
New Brunswick, Nova Scotia, Prince Edward Island and Newfoundland

LES PROVINCES DE L'ATLANTIQUE COMPRENNENT:  
Le Nouveau-Brunswick, la Nouvelle-Écosse, l'Île-du-Prince-Édward et Terre-Neuve

Source: Canadian Food Inspection Agency, as compiled by AAFC, AID, Poultry Section  
Agence canadienne d'inspection des aliments, compilé par AAC, DIA, Section de la volaille