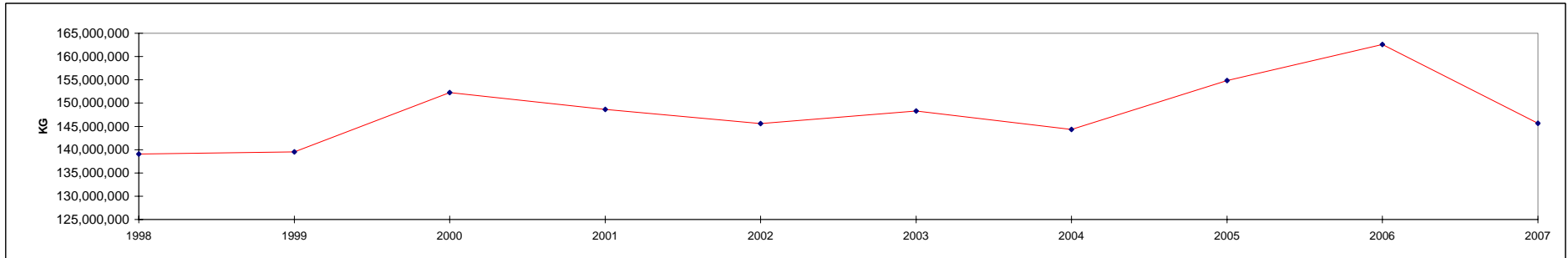


	5 kg and under 5 kg et moins		Over 5 and but not more than 7 kg Plus de 5 kg mais pas plus de 7 kg		Over 7 and but not more than 9 kg Plus de 7 kg mais pas plus de 9 kg		Over 9 kg but not more than 11 kg Plus de 9 kg mais pas plus de 11 kg		Over 11 kg Plus de 11 kg		MATURE TURKEY DINDON ADULTE		TOTAL		
	Head - Têtes	Kg	Head - Têtes	Kg	Head - Têtes	Kg	Head - Têtes	Kg	Head - Têtes	Kg	Head - Têtes	Kg	Head - Têtes	Kg	
1998	7,220,073	31,365,099	5,731,412	35,228,355	789,838	6,356,707	3,343,350	33,329,833	2,096,181	24,738,643	819,146	8,033,105	20,000,000	139,051,742	1998
1999	7,603,173	32,550,563	5,202,675	32,238,068	1,241,877	10,055,106	2,585,644	25,851,754	2,701,793	31,858,210	727,270	6,974,543	20,062,432	139,528,244	1999
2000	7,455,708	32,665,938	5,854,293	36,580,402	1,202,914	9,680,526	2,480,529	24,665,020	3,469,849	41,517,824	732,327	7,149,077	21,195,620	152,258,787	2000
2001	6,399,249	28,359,864	5,579,876	34,814,126	993,016	7,890,311	2,827,187	28,331,661	3,552,265	42,228,298	727,274	7,023,172	20,078,867	148,647,432	2001
2002	5,954,972	25,976,959	5,442,172	32,758,371	1,492,229	11,844,629	2,073,443	20,915,454	3,734,923	45,547,656	865,051	8,582,666	19,562,790	145,625,735	2002
2003	5,719,634	24,825,446	5,697,549	34,284,343	1,441,234	11,346,191	2,006,217	20,216,158	4,097,783	49,946,699	763,950	7,658,685	19,726,367	148,277,522	2003
2004	5,507,870	24,094,551	6,044,763	36,304,671	1,612,809	12,772,886	1,628,475	16,074,949	3,794,235	46,628,725	830,496	8,486,870	19,418,648	144,362,652	2004
2005	5,525,747	24,202,978	5,899,750	35,589,120	2,092,797	16,543,226	2,172,392	21,624,278	3,900,912	48,625,338	826,124	8,242,964	20,417,722	154,827,904	2005
2006	5,706,378	25,072,670	5,896,383	35,410,441	2,136,803	16,719,288	1,588,423	16,244,314	4,829,152	59,892,124	907,787	9,237,470	21,064,926	162,576,307	2006
2007	4,799,721	21,190,108	5,109,514	30,422,154	1,781,733	13,881,592	1,688,022	17,116,620	4,478,713	55,461,459	764,961	7,580,689	18,622,664	145,652,622	2007



5 kg and under 5 kg et moins		Over 5 and but not more than 7 kg Plus de 5 kg mais pas plus de 7 kg		Over 7 and but not more than 9 kg Plus de 7 kg mais pas plus de 9 kg		Over 9 kg but not more than 11 kg Plus de 9 kg mais pas plus de 11 kg		Over 11 kg Plus de 11 kg		MATURE TURKEY DINDON ADULTE		TOTAL	
Head - Têtes	Kg	Head - Têtes	Kg	Head - Têtes	Kg	Head - Têtes	Kg	Head - Têtes	Kg	Head - Têtes	Kg	Head - Têtes	Kg

CANADA

January	430,721	1,909,191	433,869	2,535,197	127,542	980,866	87,594	897,761	424,588	5,415,530	65,302	706,040	1,569,616	12,444,585	janvier
February	373,772	1,619,239	414,040	2,447,594	117,946	935,464	152,665	1,537,398	383,378	4,718,382	86,055	841,806	1,527,856	12,099,883	février
March	444,007	1,928,389	431,436	2,627,144	159,119	1,244,109	170,926	1,742,267	388,093	4,831,365	62,375	637,534	1,655,956	13,010,808	mars
April	472,615	2,102,251	493,182	2,948,510	106,711	803,384	171,399	1,716,883	413,578	5,045,250	65,988	618,022	1,723,473	13,234,300	avril
May	571,514	2,540,713	428,535	2,570,485	114,704	896,905	159,631	1,614,381	376,513	4,606,008	93,515	926,266	1,744,412	13,154,758	mai
June	523,516	2,269,555	513,078	3,038,385	198,180	1,574,786	136,791	1,392,900	473,497	5,842,537	48,729	463,285	1,893,791	14,581,448	juin
July	389,188	1,717,434	510,466	3,034,043	191,374	1,496,420	226,006	2,269,599	445,843	5,617,971	88,002	840,478	1,850,879	14,975,945	juillet
August	418,612	1,848,057	575,247	3,404,563	195,127	1,480,601	150,647	1,526,755	431,064	5,361,508	62,632	624,075	1,833,329	14,245,559	août
September	457,354	2,036,413	592,909	3,579,226	282,471	2,249,224	156,257	1,589,774	418,225	5,099,783	78,053	773,287	1,985,269	15,327,707	septembre
October	476,469	2,138,314	484,906	2,870,033	186,239	1,437,925	186,227	1,901,804	486,331	5,989,308	90,317	894,004	1,910,489	15,231,388	octobre
November	241,957	1,080,551	231,846	1,366,975	102,321	781,908	89,880	927,099	237,605	2,933,816	23,993	255,891	927,602	7,346,240	novembre
December	0	0	0	0	0	0	0	0	0	0	0	0	0	0	décembre
2007	4,799,725	21,190,107	5,109,514	30,422,155	1,781,734	13,881,592	1,688,023	17,116,621	4,478,715	55,461,458	764,961	7,580,688	18,622,672	145,652,621	2007
2006	5,706,378	25,072,671	5,896,383	35,410,442	2,136,803	16,719,288	1,588,423	16,244,314	4,829,152	59,892,124	907,787	9,237,470	21,064,926	162,576,309	2006

WESTERN PROVINCES - PROVINCES DE L'OUEST

January	84,031	385,780	121,806	758,690	69,874	539,970	57,743	582,430	54,024	626,769	1,707	20,083	389,185	2,913,722	janvier
February	59,766	271,350	133,339	844,420	75,888	597,455	86,850	871,595	52,130	604,513	14,156	139,456	422,129	3,328,789	février
March	78,475	356,058	169,537	1,075,437	81,576	640,259	103,341	1,073,399	32,237	383,769	6,268	59,093	471,434	3,588,015	mars
April	121,174	545,758	187,024	1,159,853	77,622	582,815	103,501	1,035,415	54,643	638,162	8,441	82,067	552,405	4,044,070	avril
May	87,619	407,749	159,905	1,025,944	55,251	434,546	121,452	1,230,875	51,767	592,653	11,380	109,067	487,374	3,800,834	mai
June	60,144	276,305	187,941	1,163,471	136,801	1,073,464	74,239	761,712	111,816	1,306,493	3,367	30,417	574,308	4,611,862	juin
July	105,151	473,443	224,943	1,393,626	106,673	830,680	169,777	1,703,787	58,376	699,768	1,541	13,439	666,461	5,114,743	juillet
August	83,503	385,633	232,579	1,433,485	132,404	1,003,868	94,150	948,206	73,013	866,154	21,967	218,440	637,616	4,855,786	août
September	75,988	355,412	252,393	1,590,560	183,152	1,443,870	92,624	948,038	94,192	1,111,727	19,217	180,963	717,566	5,630,570	septembre
October	98,345	456,766	142,113	894,037	149,336	1,158,178	127,496	1,287,141	122,949	1,490,083	17,137	177,769	657,376	5,463,974	octobre
November	29,372	133,727	93,280	586,875	90,416	680,947	62,266	642,378	24,723	291,932	3,761	34,814	303,818	2,370,673	novembre
December	0	0	0	0	0	0	0	0	0	0	0	0	0	0	décembre
2007	883,568	4,047,981	1,904,860	11,926,398	1,158,993	8,986,052	1,093,439	11,084,976	729,870	8,612,023	108,942	1,065,608	5,879,672	45,723,038	2007
2006	975,185	4,414,600	2,455,544	15,510,142	1,320,297	10,309,627	968,315	9,812,580	610,951	7,261,878	101,427	1,025,661	6,431,719	48,334,488	2006

5 kg and under 5 kg et moins		Over 5 and but not more than 7 kg Plus de 5 kg mais pas plus de 7 kg		Over 7 and but not more than 9 kg Plus de 7 kg mais pas plus de 9 kg		Over 9 kg but not more than 11 kg Plus de 9 kg mais pas plus de 11 kg		Over 11 kg Plus de 11 kg		MATURE TURKEY DINDON ADULTE		TOTAL	
Head - Têtes	Kg	Head - Têtes	Kg	Head - Têtes	Kg	Head - Têtes	Kg	Head - Têtes	Kg	Head - Têtes	Kg	Head - Têtes	Kg

ONTARIO

January	222,539	957,761	107,787	650,644	57,443	439,128	29,745	314,328	264,474	3,449,649	57,697	631,295	739,685	6,442,805	janvier
February	213,853	895,427	107,044	656,129	36,779	297,628	64,629	652,879	224,205	2,777,060	66,366	647,424	712,876	5,926,547	février
March	252,195	1,065,469	101,820	637,668	64,246	504,389	63,194	621,499	219,618	2,750,960	56,107	578,441	757,180	6,158,426	mars
April	152,350	659,246	117,224	723,842	28,645	217,239	62,278	622,821	230,388	2,825,474	54,513	504,936	645,398	5,553,558	avril
May	328,797	1,432,163	57,832	361,745	46,167	359,958	33,515	335,887	228,342	2,812,716	74,402	741,311	769,055	6,043,780	mai
June	329,922	1,382,000	153,533	916,549	36,416	291,171	58,219	585,179	260,976	3,290,262	34,232	326,668	873,298	6,791,829	juin
July	182,044	782,907	111,858	678,354	65,385	512,436	43,714	444,170	238,680	3,053,632	82,646	794,081	724,327	6,265,580	juillet
August	218,696	930,696	167,503	990,406	47,632	358,470	38,023	395,359	252,828	3,198,055	36,055	359,613	760,737	6,232,599	août
September	252,213	1,089,544	203,690	1,211,722	93,019	753,428	42,216	419,314	212,693	2,630,951	50,105	511,604	853,936	6,616,563	septembre
October	201,471	878,559	145,477	862,948	26,872	208,113	45,974	478,475	238,805	2,967,485	71,020	693,341	729,619	6,088,921	octobre
November	80,126	341,384	79,459	456,672	11,281	96,428	22,408	229,158	141,196	1,786,871	18,125	200,090	352,595	3,110,603	novembre
December	0	0	0	0	0	0	0	0	0	0	0	0	0	0	décembre
2007	2,434,206	10,415,156	1,353,227	8,146,679	513,885	4,038,388	503,915	5,099,069	2,512,205	31,543,115	601,268	5,988,804	7,918,706	65,231,211	2007
2006	2,584,903	11,025,262	1,586,781	9,529,229	719,322	5,681,187	505,041	5,215,296	2,865,896	36,128,910	743,466	7,611,257	9,005,409	75,191,141	2006

QUEBEC - QUÉBEC

January	91,389	416,640	193,877	1,068,031	225	1,768	106	1,003	106,090	1,339,112	5,898	54,662	397,585	2,881,216	janvier
February	84,291	379,153	144,183	789,280	5,279	40,381	1,186	12,924	107,043	1,336,809	5,533	54,926	347,515	2,613,473	février
March	80,498	358,218	144,331	827,316	13,297	99,461	4,391	47,369	136,238	1,696,636	0	0	378,755	3,029,000	mars
April	149,245	672,269	174,178	982,076	444	3,330	5,620	58,647	128,547	1,581,614	3,034	31,019	461,068	3,328,955	avril
May	112,796	513,041	183,033	1,031,834	13,286	102,401	4,664	47,619	96,404	1,200,639	7,733	75,888	417,916	2,971,422	mai
June	72,395	329,803	168,250	939,552	24,963	210,151	4,333	46,009	100,705	1,245,782	11,130	106,200	381,776	3,287,470	juin
July	61,984	280,131	161,481	897,650	19,316	153,304	12,515	121,642	148,787	1,864,571	3,815	32,958	407,898	3,350,256	juillet
August	80,615	370,373	171,324	960,891	15,091	118,263	18,474	183,190	105,223	1,297,299	4,610	46,022	395,337	2,976,038	août
September	101,094	457,227	108,345	623,797	6,300	51,926	21,417	222,422	111,340	1,357,105	8,731	80,720	357,227	2,793,197	septembre
October	100,764	465,603	193,850	1,093,976	10,031	71,634	12,757	136,188	124,577	1,531,740	2,160	22,894	444,139	3,322,035	octobre
November	110,297	511,094	57,964	317,302	624	4,533	5,206	55,563	71,686	855,013	2,107	20,987	247,884	1,764,492	novembre
December	0	0	0	0	0	0	0	0	0	0	0	0	0	0	décembre
2007	1,045,368	4,753,552	1,700,816	9,531,705	108,856	857,152	90,669	932,576	1,236,640	15,306,320	54,751	526,276	4,237,100	31,907,581	2007
2006	1,616,413	7,274,399	1,673,342	9,387,265	97,184	728,474	115,067	1,216,438	1,352,305	16,501,336	62,894	600,552	4,917,205	35,708,464	2006

ATLANTIC PROVINCES - PROVINCES DE L'ATLANTIQUE

January	32,762	149,010	10,399	57,832	0	0	0	0	0	0	0	0	43,161	206,842	janvier
February	15,862	73,309	29,474	157,765	0	0	0	0	0	0	0	0	45,336	231,074	février
March	32,839	148,644	15,748	86,723	0	0	0	0	0	0	0	0	48,587	235,367	mars
April	49,846	224,978	14,756	82,739	0	0	0	0	0	0	0	0	64,602	307,717	avril
May	42,302	187,760	27,765	150,962	0	0	0	0	0	0	0	0	70,067	338,722	mai
June	61,055	281,447	3,354	18,813	0	0	0	0	0	0	0	0	64,409	300,260	juin
July	40,009	180,953	12,184	64,413	0	0	0	0	0	0	0	0	52,193	245,366	juillet
August	35,798	161,355	3,841	19,781	0	0	0	0	0	0	0	0	39,639	181,136	août
September	28,059	134,230	28,481	153,147	0	0	0	0	0	0	0	0	56,540	287,377	septembre
October	75,889	337,386	3,466	19,072	0	0	0	0	0	0	0	0	79,355	356,458	octobre
November	22,162	94,346	1,143	6,126	0	0	0	0	0	0	0	0	23,305	100,472	novembre
December	0	0	0	0	0	0	0	0	0	0	0	0	0	0	décembre
2007	436,583	1,973,418	150,611	817,373	0	0	0	0	0	0	0	0	587,194	2,790,791	2007
2006	529,877	2,358,410	180,716	983,806	0	0	0	0	0	0	0	0	710,593	3,342,216	2006

WESTERN PROVINCES INCLUDE:  
British Columbia, Alberta, Saskatchewan, Manitoba

LES PROVINCES DE L'OUEST COMPRENNENT:  
La Colombie-Britannique, l'Alberta, la Saskatchewan, le Manitoba

ATLANTIC PROVINCES INCLUDE:  
New Brunswick, Nova Scotia, Prince Edward Island and Newfoundland

LES PROVINCES DE L'ATLANTIQUE COMPRENNENT:  
Le Nouveau-Brunswick, la Nouvelle-Écosse, l'Île-du-Prince-Édouard et Terre-Neuve

Source: Canadian Food Inspection Agency, as compiled by AAFC, AID, Poultry Section  
Agence canadienne d'inspection des aliments, compilé par AAC, DIA, Section de la volaille