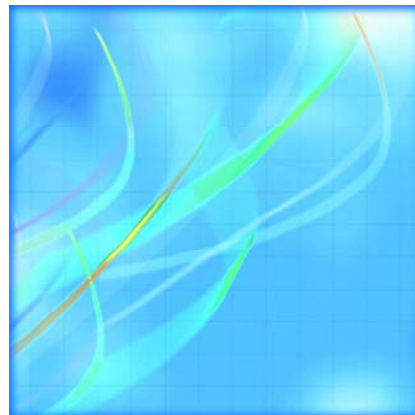




Catalogue no. 21-007-XIE

Farm Product Price Index

December 2006



Statistics
Canada

Statistique
Canada

Canada

How to obtain more information

Specific inquiries about this product and related statistics or services should be directed to: Agriculture Division, Statistics Canada, Ottawa, Ontario, K1A 0T6 (telephone: 1-800-465-1991; agriculture@statcan.ca).

For information on the wide range of data available from Statistics Canada, you can contact us by calling one of our toll free numbers. You can also contact us by e-mail or by visiting our website at www.statcan.ca.

National inquiries line **1-800-263-1136**

National telecommunications device for the hearing impaired **1-800-363-7629**

Depository Services Program inquiries **1-800-700-1033**

Fax line for Depository Services Program **1-800-889-9734**

E-mail inquiries infostats@statcan.ca

Website www.statcan.ca

Information to access the product

This product, catalogue no. 21-007-XIE, is available for free in electronic format. To obtain a single issue, visit our website at www.statcan.ca and select Publications.

Standards of service to the public

Statistics Canada is committed to serving its clients in a prompt, reliable, courteous, and fair manner. To this end, the Agency has developed standards of service that its employees observe in serving its clients. To obtain a copy of these service standards, please contact Statistics Canada toll free at 1-800-263-1136. The service standards are also published on www.statcan.ca under About us > Providing services to Canadians.



Statistics Canada
Agriculture Division

Farm Product Price Index

December 2006

Published by authority of the Minister responsible for Statistics Canada

© Minister of Industry, 2007

All rights reserved. The content of this electronic publication may be reproduced, in whole or in part, and by any means, without further permission from Statistics Canada, subject to the following conditions: that it be done solely for the purposes of private study, research, criticism, review or newspaper summary, and/or for non-commercial purposes; and that Statistics Canada be fully acknowledged as follows: Source (or "Adapted from", if appropriate): Statistics Canada, year of publication, name of product, catalogue number, volume and issue numbers, reference period and page(s). Otherwise, no part of this publication may be reproduced, stored in a retrieval system or transmitted in any form, by any means—electronic, mechanical or photocopy—or for any purposes without prior written permission of Licensing Services, Client Services Division, Statistics Canada, Ottawa, Ontario, Canada K1A 0T6.

March 2007

Catalogue no. 21-007-XIE, Vol. 6, No. 12

ISSN 1496-2284

Frequency: Monthly

Ottawa

La version française de cette publication est disponible sur demande (n° 21-007-XIF au catalogue).

Note of appreciation

Canada owes the success of its statistical system to a long standing partnership between Statistics Canada, the citizens of Canada, its businesses, governments and other institutions. Accurate and timely statistical information could not be produced without their continued cooperation and goodwill.

User information

Symbols

The following standard symbols are used in Statistics Canada publications:

- . not available for any reference period
- .. not available for a specific reference period
- ... not applicable
- 0 true zero or a value rounded to zero
- 0^s value rounded to 0 (zero) where there is a meaningful distinction between true zero and the value that was rounded
- p preliminary
- r revised
- x suppressed to meet the confidentiality requirements of the *Statistics Act*
- E use with caution
- F too unreliable to be published

Acknowledgements

This publication was prepared under the direction of:

- **Marco Morin**, Chief, Farm Income and Prices Section
- **Gail-Ann Breese**, Head, Farm Prices Unit
- **Nickeisha Patterson**, Subject Matter Officer, Farm Prices Unit
- **Robert Waugh**, Statistical assistant, Farm Prices Unit
- **Danielle Huard**, Statistical assistant, Farm Prices Unit

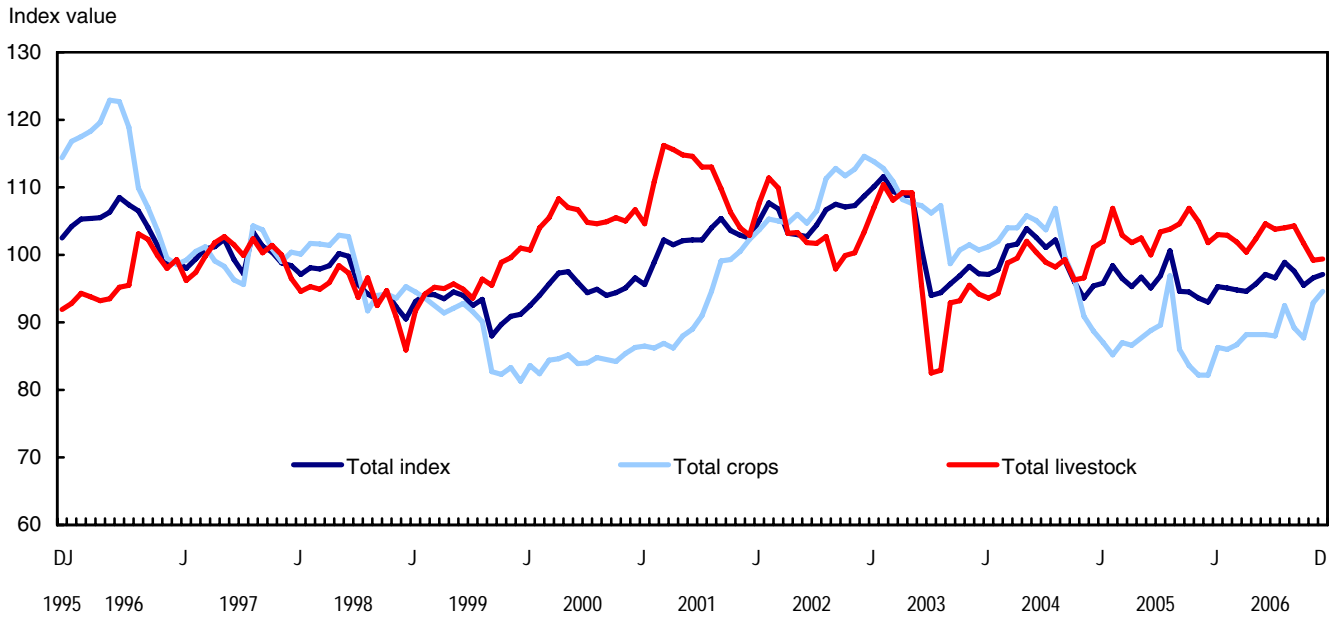
Table of contents

Highlights	4
Analysis – December 2006	5
Related products	6
Statistical tables	
1 Farm product price index, by province	9
2 Indexes of total crop prices, by province	10
3 Indexes of total livestock and animal product prices, by province	11
4 Sub-indexes of crops and livestock and animal product prices, Canada	12
Data quality, concepts and methodology	
Concepts, methodology and data quality	13
Concepts and variables measured	15
Charts	
1. Farm product price index (FPPI) (1997=100)	4

Highlights

Prices farmers received for their commodities rose 4.4% in December 2006 from the same month a year earlier, as surging grain and oilseed prices more that offset the overall declining livestock and animal products prices. This was the largest year-over-year increase since the fall of 2004.

Chart 1
Farm product price index (FPPI) (1997=100)



Analysis – December 2006

Prices farmers received for their commodities rose 4.4% in December 2006 from the same month a year earlier, as surging grain and oilseed prices more than offset the overall declining livestock and animal products prices. This was the largest year-over-year increase since the fall of 2004.

Overall, producers received prices for crops that were 15.1% above those of December 2005, marking the fourth consecutive month of year-over-year increases. Significant gains were recorded for grains, oilseeds and special crops. The autumn of 2006 signified the end of a year-over-year decrease for grain prices which had lasted almost three years.

However, prices for livestock and animal products were 2.4% below the year earlier level. Lower cattle and calf prices were the big contributor while hogs also recorded a decrease, continuing a trend that had started in May 2005. Meanwhile, prices for the supply-managed commodities increased.

On a monthly basis, prices farmers received for their commodities increased slightly, up 0.5% from November 2006, as the overall crops index rose 1.8% and the livestock and animal products index inched up 0.2%.

The Farm Product Price Index (FPPI) (1997=100) stood at 97.1 in December, up from a revised November index of 96.6.

The overall crops index was higher in December compared to November as all crops except fruits and vegetables recorded increases.

Grain prices were up in December, as worldwide supplies continue to dwindle and continued expansion of the ethanol industry.

Oilseed prices were also up, driven by similar factors to grain, including rising demand from the bio-fuel industry. In addition, canola is also considered a healthy alternative to trans-fat oils. Domestic crush was 50% higher in 2006 compared to 2005.

The overall index for livestock and animal products was virtually unchanged in December from the revised November level, as prices for cattle and calves were down 1.6% while the other commodities either remained the same or rose slightly.

The cattle and calf index dropped to its lowest level since the border reopened in July 2005 to restricted trade of live animals. Prices for feeder cattle and calves are being pressured by rapidly rising feed grain prices.

Hog prices were up 1.4% in December after falling for five consecutive months. Ample North American supplies and higher feed costs have affected the hog market.

Related products

Selected publications from Statistics Canada

21-010-X	Net farm income - Agriculture economic statistics
21-011-X	Farm cash receipts - Agriculture economic statistics
21-012-X	Farm operating expenses and depreciation charges - Agriculture economic statistics
21-013-X	Value of farm capital - Agriculture economic statistics
21-014-X	Farm debt outstanding - Agriculture economic statistics
21-015-X	Direct payments to agriculture producers - Agriculture economic statistics
21-016-X	Balance sheet of the agricultural sector - Agriculture economic statistics
21-017-X	Agriculture value added account - Agriculture economic statistics
21-018-X	Farm business cash flows - Agriculture economic statistics
21-207-X	Statistics on income of farm families
21-208-X	Statistics on revenues and expenses of farms
21-525-X	Understanding measurements of farm income

Selected CANSIM tables from Statistics Canada

002-0005	Farm operating expenses and depreciation charges
002-0021	Farm product price index (FPPI)
002-0022	Farm product price index (FPPI)
002-0043	Farm product prices, crops and livestock

Selected surveys from Statistics Canada

3436	Farm Product Prices Survey
5040	Farm Product Price Index

Statistical tables

Table 1
Farm product price index, by province

	Newfoundland and Labrador	Prince Edward Island	Nova Scotia	New Brunswick	Quebec	Ontario	Manitoba	Saskat- chewan	Alberta	British Columbia	Canada
(1997 = 100)											
Annual											
1995	90.1	114.4	92.5	104.0	93.8	94.0	97.7	110.0	102.6	94.2	99.4
1996	100.2	104.0	101.7	102.8	101.3	100.9	104.7	111.0	103.9	97.6	103.7
1997	100.0	100.0	100.0	100.0	100.0	100.0	100.0	100.0	100.0	100.0	100.0
1998	101.1	103.2	98.8	102.3	92.3	93.0	94.3	98.4	97.0	98.0	95.5
1999	101.3	118.3	98.1	107.0	92.7	90.7	87.5	89.2	93.7	98.1	92.1
2000	99.6	112.0	101.8	108.3	99.6	95.7	87.9	87.8	96.6	101.9	95.0
2001	101.2	116.0	103.3	116.2	103.0	101.4	96.7	99.0	104.8	102.0	101.8
2002	101.4	147.0	97.2	124.1	102.3	101.2	101.2	110.7	109.2	106.5	105.7
2003	101.9	122.3	102.1	109.8	101.2	100.0	95.5	103.0	101.1	107.7	101.3
2004											
January	101.8	94.5	103.6	107.6	95.8	98.6	89.3	97.7	96.2	105.1	97.1
February	102.5	94.4	105.5	93.4	100.9	100.8	90.5	96.5	95.6	101.4	97.8
March	99.6	97.7	101.2	102.9	103.1	103.1	95.9	101.4	100.4	102.4	101.3
April	101.1	96.0	100.6	96.5	104.7	103.4	96.7	100.9	100.1	103.4	101.6
May	100.7	101.9	104.7	104.6	107.8	105.7	99.3	105.1	100.1	104.9	103.9
June	98.0	114.7	103.3	104.8	112.9	104.8	97.7	102.3	94.4	106.1	102.6
July	104.3	127.6	119.0	116.3	107.9	101.6	99.2	100.9	92.6	107.0	101.1
August	106.6	140.5	114.9	123.9	108.1	99.5	100.5	104.2	93.5	109.7	102.2
September	102.5	149.1	109.4	119.0	106.7	100.3	95.4	93.4	94.9	104.3	99.1
October	102.9	120.1	108.1	108.5	106.2	98.4	91.8	86.6	93.8	99.5	96.0
November	102.0	103.8	104.6	105.8	104.6	96.3	88.0	84.5	91.6	96.1	93.6
December	102.4	110.0	104.5	111.9	105.0	97.3	88.4	84.4	94.2	103.7	95.4
Annual	102.2	108.8	107.5	109.1	105.5	100.3	93.6	94.8	95.5	103.6	98.9
2005 ¹											
January	101.2	104.1	111.7	112.4	103.4	97.2	90.3	84.7	96.4	99.5	95.8
February	103.2	108.1	115.8	111.0	108.6	101.3	90.6	86.5	97.5	104.1	98.4
March	105.3	110.2	110.5	117.0	106.0	99.3	88.1	85.2	94.6	103.8	96.5
April	104.7	107.4	110.4	106.1	102.2	99.5	88.9	83.4	94.0	99.3	95.3
May	103.5	108.0	111.3	103.9	104.1	101.0	93.8	84.7	94.2	98.0	96.7
June	103.8	104.9	110.9	109.9	105.6	99.7	89.1	81.4	91.8	101.7	95.1
July	102.5	102.7	112.7	140.6	105.3	100.3	91.0	82.6	96.3	101.1	96.9
August	102.9	107.6	121.6	139.3	107.4	101.0	92.4	88.9	99.0	108.7	100.6
September	112.6	134.7	117.3	124.0	105.0	99.9	86.9	78.8	90.0	109.7	94.6
October	113.1	132.6	114.8	119.9	101.0	96.3	88.8	83.4	90.7	112.2	94.5
November	112.2	137.9	108.0	119.8	102.8	96.4	88.1	81.5	88.8	104.2	93.6
December	104.9	139.4	108.2	118.4	101.2	99.2	85.0	74.6	89.7	111.3	93.0
Annual	106.3	114.3	113.4	119.7	105.0	99.3	91.3	83.4	94.1	106.2	96.6
2006 ¹											
January	104.8	137.3	118.7	125.9	102.7	98.6	88.8	79.2	92.9	107.7	95.3
February	103.0	124.1	120.7	127.7	104.2	97.7	89.2	80.7	91.3	108.6	95.1
March	102.2	144.7	108.2	126.8	104.4	98.0	88.5	80.6	90.4	106.4	94.8
April	101.7	143.9	109.9	127.0	103.8	99.1	86.5	79.5	90.4	105.4	94.6
May	101.4	138.9	112.0	128.2	106.1	99.1	89.4	81.7	90.5	104.8	95.7
June	101.2	132.4	112.6	130.4	104.8	99.9	92.1	85.7	93.4	104.9	97.1
July	104.7	121.6	112.8	125.8	105.3	100.1	91.5	84.7	91.8	105.4	96.6
August	107.0	129.5	120.7	134.4	113.8	101.1	88.6	83.6	92.6	110.5	98.9
September	104.0	154.3	121.0	142.3	109.7	101.4	88.6	82.9	91.4	110.0	97.6
October	106.2	139.6	118.8	126.8	104.7	98.0	87.1	83.0	91.5	108.1	95.5
November	107.3	128.9	113.9	125.8	104.3	101.1	88.9	83.7	91.1	111.0	96.6
December	107.2	135.6	114.2	120.7	105.6	101.2	91.5	85.5	91.4	104.8	97.1
Annual	104.2	136.9	116.3	127.9	105.9	99.5	88.5	82.0	91.6	107.1	96.1

1. Since August 2004, current initial prices are used for wheat and barley in Western Canada and for wheat in Ontario.

Table 2
Indexes of total crop prices, by province

	Newfoundland and Labrador	Prince Edward Island	Nova Scotia	New Brunswick	Quebec	Ontario	Manitoba	Saskat- chewan	Alberta	British Columbia	Canada
(1997 = 100)											
Annual											
1995	x	133.5	87.1	114.3	100.6	94.7	102.5	114.0	111.6	98.5	105.7
1996	x	109.4	100.5	105.9	111.5	103.2	110.1	116.5	115.6	100.6	110.9
1997	x	100.0	100.0	100.0	100.0	100.0	100.0	100.0	100.0	100.0	100.0
1998	x	112.5	104.8	110.2	97.3	91.2	98.9	98.6	97.9	95.8	96.9
1999	x	138.2	106.1	120.3	93.3	85.2	85.1	85.5	85.9	95.5	87.8
2000	x	118.9	103.5	117.5	93.7	85.8	76.4	80.4	81.6	95.1	84.3
2001	x	121.5	95.8	133.0	96.0	91.1	87.6	94.2	92.3	91.9	92.9
2002	x	180.4	91.0	155.9	107.2	98.2	105.1	113.6	111.9	107.3	108.4
2003	x	142.7	102.3	121.2	103.2	98.1	99.3	106.3	109.8	111.4	104.5
2004											
January	x	98.5	98.5	117.3	97.7	99.6	95.8	101.5	104.9	111.5	101.2
February	x	93.8	97.5	84.6	98.3	101.8	96.8	103.8	106.0	105.3	102.0
March	x	99.1	99.7	102.3	98.6	105.6	98.9	105.5	108.3	103.7	104.0
April	x	94.9	99.4	89.6	104.0	106.4	99.2	102.8	107.5	107.0	104.0
May	x	100.8	99.3	104.3	105.3	106.8	100.1	107.1	107.1	108.6	105.8
June	x	118.8	98.7	103.4	109.0	104.2	100.3	104.5	105.9	110.0	105.1
July	x	150.1	137.8	135.9	108.3	97.4	99.3	102.7	106.7	110.9	103.7
August	x	180.7	119.0	145.9	102.9	95.0	105.1	110.8	115.2	116.3	106.9
September	x	187.5	111.2	137.5	100.8	96.8	96.7	94.9	103.0	109.4	99.7
October	x	136.2	110.1	115.8	100.2	96.0	94.7	87.7	99.7	103.9	96.4
November	x	111.1	106.4	112.9	98.0	92.1	86.2	82.8	96.5	94.6	90.9
December	x	118.5	106.2	119.8	95.3	88.3	83.6	80.9	94.7	104.9	88.7
Annual	x	115.8	112.0	118.1	101.4	97.6	95.0	96.3	103.5	107.5	99.5
2005¹											
January	x	107.2	116.1	121.7	93.1	86.5	83.9	79.0	92.2	91.7	87.0
February	x	109.6	116.2	119.6	89.4	85.6	81.7	77.8	88.6	97.3	85.2
March	x	115.8	118.3	125.6	90.3	89.1	82.9	79.5	87.4	102.1	87.0
April	x	112.2	117.2	104.6	89.8	90.1	83.1	77.1	87.6	95.3	86.6
May	x	111.5	120.0	98.4	86.7	92.8	84.6	78.5	90.3	93.0	87.7
June	x	104.9	117.8	115.7	91.5	95.3	83.8	77.2	89.3	100.9	88.8
July	x	103.4	121.6	188.3	99.4	92.6	83.1	76.2	90.7	101.7	89.6
August	x	107.6	132.8	170.1	103.6	96.8	87.2	76.5	94.1	111.8	96.9
September	x	160.2	129.7	143.0	100.1	93.4	78.9	71.1	79.7	108.4	86.0
October	x	153.7	123.2	136.5	90.9	87.0	77.9	71.0	76.9	104.5	83.6
November	x	161.8	111.4	141.3	92.7	85.9	76.5	70.0	74.9	97.1	82.2
December	x	167.8	110.3	139.4	97.7	89.2	77.8	68.6	73.1	104.7	82.2
Annual	x	123.9	122.7	138.9	95.5	90.3	82.2	74.4	84.6	101.9	86.8
2006¹											
January	x	164.8	121.7	162.6	102.7	90.0	85.1	70.9	78.2	102.8	86.3
February	x	142.7	121.0	177.8	105.5	88.7	83.6	70.9	80.6	101.8	86.0
March	x	180.2	120.8	159.2	106.2	88.8	84.2	71.8	79.9	100.9	86.7
April	x	178.6	120.4	167.5	105.3	90.8	85.3	70.8	82.0	100.6	88.2
May	x	170.2	118.7	164.3	106.5	90.2	85.0	72.6	81.0	100.9	88.2
June	x	161.5	118.6	177.5	103.5	90.7	85.0	76.1	81.8	100.5	88.2
July	x	141.8	118.0	153.9	107.8	90.0	84.3	75.0	80.6	101.6	88.0
August	x	161.5	138.6	164.7	120.9	92.4	79.2	72.8	84.9	108.2	92.5
September	x	195.0	135.0	184.0	112.6	91.2	78.6	73.6	83.1	108.4	89.2
October	x	166.6	135.6	155.1	105.0	88.9	77.4	75.4	84.4	106.9	87.7
November	x	148.0	127.0	156.3	106.4	94.8	85.4	80.2	87.6	114.3	92.9
December	x	161.2	127.2	143.8	110.1	95.7	90.5	82.3	90.3	105.4	94.6
Annual	x	165.9	130.5	161.0	108.6	90.9	82.0	74.1	83.1	104.6	88.8

1. Since August 2004, current initial prices are used for wheat and barley in Western Canada and for wheat in Ontario.

Table 3
Indexes of total livestock and animal product prices, by province

	Newfoundland and Labrador	Prince Edward Island	Nova Scotia	New Brunswick	Quebec	Ontario	Manitoba	Saskat- chewan	Alberta	British Columbia	Canada
(1997 = 100)											
Annual											
1995	86.9	92.9	95.0	96.9	91.5	93.4	90.5	95.4	95.5	90.9	93.2
1996	100.6	97.8	102.3	100.6	97.9	99.0	96.7	91.1	94.7	95.2	96.8
1997	100.0	100.0	100.0	100.0	100.0	100.0	100.0	100.0	100.0	100.0	100.0
1998	101.2	91.9	95.6	96.7	90.6	94.5	87.8	97.6	96.4	99.8	94.2
1999	100.8	93.4	94.0	97.3	92.5	95.1	90.6	102.3	99.6	100.2	96.2
2000	97.9	104.4	100.8	101.7	101.7	103.8	103.2	113.9	107.7	107.5	105.2
2001	99.6	110.4	106.9	103.8	105.6	109.9	109.0	116.8	114.2	110.4	110.3
2002	98.6	102.5	100.3	100.5	100.4	103.3	97.8	104.8	108.1	105.1	103.4
2003	99.1	96.6	101.9	101.5	100.4	101.1	92.2	95.8	96.1	103.7	98.5
2004											
January	98.8	92.1	104.3	100.3	95.1	97.4	83.5	89.3	91.2	99.6	93.6
February	99.7	96.8	106.0	99.1	101.0	100.1	84.8	81.0	89.7	97.5	94.3
March	96.7	97.7	101.2	101.5	103.7	101.4	93.5	92.4	95.9	100.0	98.8
April	98.2	98.9	100.8	100.9	105.3	101.0	94.9	96.6	95.8	99.5	99.5
May	98.0	102.7	105.5	102.3	108.7	104.8	98.2	100.8	95.8	100.9	102.0
June	95.3	103.5	104.3	103.9	113.3	104.6	95.4	98.9	87.9	102.0	100.4
July	97.5	99.8	106.5	101.6	107.6	104.9	99.4	100.4	85.1	102.9	98.9
August	98.7	101.6	109.8	102.9	111.6	103.5	96.6	91.1	83.3	101.2	98.2
September	98.3	101.9	107.8	103.7	109.9	103.2	96.3	92.1	90.3	99.0	99.3
October	98.8	101.1	106.2	104.4	109.3	100.4	89.6	84.0	90.5	95.0	96.3
November	98.3	99.5	102.9	101.8	107.6	99.6	90.9	88.9	89.0	98.3	96.6
December	98.7	102.1	103.3	106.1	108.1	103.7	95.4	100.7	94.4	101.3	101.1
Annual	98.0	99.8	105.0	102.8	106.9	102.0	93.0	92.1	90.9	99.5	98.3
2005											
January	96.6	100.5	109.2	105.8	106.3	105.2	96.6	98.5	98.6	102.2	102.0
February	99.1	106.2	113.5	104.9	113.2	111.2	99.8	103.3	101.9	104.9	106.9
March	101.1	103.3	107.4	110.8	110.1	105.9	93.9	97.2	98.6	103.6	102.9
April	100.5	101.3	107.2	106.1	107.8	106.3	94.9	95.4	96.7	102.2	101.8
May	99.3	103.2	108.1	105.0	110.7	106.8	100.3	97.9	93.9	101.7	102.5
June	99.3	102.5	107.8	105.0	109.4	103.2	94.0	95.7	92.0	101.7	100.0
July	98.6	100.1	107.0	102.1	107.5	107.1	98.4	109.8	97.7	101.1	103.4
August	99.1	103.0	110.3	104.7	108.7	104.5	97.5	108.2	99.5	106.3	103.8
September	108.2	102.6	109.0	107.2	106.9	106.0	101.6	108.9	98.9	110.7	104.6
October	109.0	102.0	108.7	105.9	105.5	108.4	105.1	111.5	100.0	118.4	106.9
November	108.4	100.7	106.5	101.5	107.0	106.1	102.2	108.8	98.5	113.5	104.9
December	99.6	99.9	107.1	104.2	102.5	106.3	94.2	95.6	99.6	113.2	101.8
Annual	101.6	102.2	108.6	105.5	108.4	107.0	101.8	106.2	98.9	109.6	104.8
2006											
January	99.6	100.9	114.6	103.3	104.1	106.0	94.1	100.3	100.6	111.4	103.0
February	97.7	100.9	116.2	100.4	105.5	105.4	96.1	104.8	96.8	113.3	102.9
March	97.5	99.0	103.0	106.0	105.5	105.7	94.1	103.0	95.8	110.8	101.9
April	97.1	100.4	104.9	101.1	102.2	106.3	89.3	101.5	94.7	109.2	100.4
May	97.0	101.1	107.6	106.1	106.1	106.6	96.5	104.5	95.3	107.9	102.4
June	97.3	102.0	108.5	104.3	106.5	107.7	100.7	110.1	99.1	108.3	104.6
July	96.6	99.2	110.9	104.2	104.1	108.9	100.2	109.9	97.4	108.0	103.8
August	95.4	104.0	103.9	107.4	106.6	108.2	99.1	109.3	96.6	109.2	104.0
September	95.7	104.3	112.7	108.1	106.4	110.3	100.5	106.8	95.4	110.6	104.3
October	95.4	101.6	107.1	104.6	103.6	105.8	98.3	103.1	94.9	108.6	101.7
November	95.4	101.1	106.3	102.3	102.7	106.1	93.0	94.4	92.3	105.5	99.2
December	95.6	100.8	107.5	104.2	104.5	106.5	92.2	89.7	91.5	105.1	99.4
Annual	96.7	101.3	109.1	104.3	104.9	106.7	96.0	102.4	96.0	108.8	102.2

Table 4
Sub-indexes of crops and livestock and animal product prices, Canada

	Grains	Oilseeds	Specialty crops	Fruit	Vegetables	Potatoes	Total crops	Cattle and calves	Hogs	Poultry	Eggs	Dairy	Total livestock	Total index
(1997 = 100)														
Annual														
1995	114.7	93.8	103.0	90.0	103.1	114.6	105.7	99.9	80.2	87.8	96.6	96.3	93.2	99.4
1996	122.1	101.2	122.0	92.9	98.5	105.2	110.9	91.4	100.6	99.8	104.9	98.0	96.8	103.7
1997	100.0	100.0	100.0	100.0	100.0	100.0	100.0	100.0	100.0	100.0	100.0	100.0	100.0	100.0
1998	94.0	96.7	95.3	99.7	102.7	111.0	96.9	103.6	64.9	97.9	96.7	102.3	94.2	95.5
1999	85.2	75.0	90.2	97.4	102.6	123.5	87.8	110.0	66.1	91.6	94.5	103.4	96.2	92.1
2000	83.1	65.0	82.5	97.6	105.0	119.6	84.3	118.8	87.7	91.2	95.4	107.5	105.2	95.0
2001	95.2	74.5	101.6	96.6	106.1	124.2	92.9	126.0	93.7	95.5	98.9	109.7	110.3	101.8
2002	111.0	94.1	124.4	104.3	111.1	166.4	108.4	117.4	76.1	91.8	102.8	112.2	103.4	105.7
2003	105.8	92.7	113.3	106.7	111.9	135.7	104.5	98.6	75.8	95.6	102.0	119.1	98.5	101.3
2004														
January	97.9	97.3	104.6	111.2	109.6	113.3	101.2	91.9	66.0	97.0	103.0	116.8	93.6	97.1
February	99.6	100.2	104.8	108.3	110.0	105.8	102.0	83.3	80.2	97.3	103.2	119.3	94.3	97.8
March	101.3	105.0	106.2	105.3	110.9	108.4	104.0	93.6	87.2	96.8	103.2	116.3	98.8	101.3
April	101.6	108.7	113.0	110.3	111.2	107.4	104.0	95.6	87.1	96.1	104.5	116.5	99.5	101.6
May	103.1	111.1	120.2	112.6	111.1	107.4	105.8	92.8	103.2	96.1	106.8	116.0	102.0	103.9
June	101.7	109.9	111.8	113.5	111.3	122.0	105.1	84.0	103.4	96.7	108.6	119.0	100.4	102.6
July	98.6	107.4	106.6	111.6	113.6	141.1	103.7	82.6	101.4	97.6	108.8	116.6	98.9	101.1
August	104.7	99.5	102.9	107.3	113.2	171.7	106.9	78.3	99.0	97.7	109.4	122.5	98.2	102.2
September	90.2	93.5	104.2	105.7	112.3	139.7	99.7	86.3	93.0	97.9	109.1	122.8	99.3	99.1
October	85.6	89.5	109.7	100.8	111.9	122.3	96.4	85.2	88.6	97.7	106.0	123.1	96.3	96.0
November	83.3	82.0	94.1	87.6	113.0	114.5	90.9	85.1	84.8	99.3	106.1	125.1	96.6	93.6
December	79.9	79.2	93.0	98.6	112.9	116.7	88.7	91.8	85.5	101.7	106.0	125.0	101.1	95.4
Annual	94.1	95.2	102.5	105.7	112.1	119.7	99.5	87.7	89.9	97.8	106.1	119.8	98.3	98.9
2005														
January	78.2	76.7	97.2	93.3	114.3	115.5	87.0	97.3	88.0	102.2	97.0	121.9	102.0	95.8
February	77.4	73.7	88.4	97.0	114.0	116.0	85.2	102.3	89.5	101.9	95.5	133.2	106.9	98.4
March	77.6	78.4	88.7	106.1	112.1	113.8	87.0	96.6	87.2	100.4	95.6	127.8	102.9	96.5
April	76.8	80.1	86.2	94.9	110.6	110.2	86.6	94.5	88.1	99.9	95.5	125.6	101.8	95.3
May	75.4	82.8	85.5	90.9	110.3	111.3	87.7	92.2	96.1	99.9	95.6	124.2	102.5	96.7
June	75.3	83.0	91.3	111.5	111.9	116.0	88.8	92.4	85.6	99.4	95.7	124.9	100.0	95.1
July	75.4	80.1	98.5	106.3	114.7	112.8	89.6	107.0	83.5	93.3	95.9	123.6	103.4	96.9
August	79.2	74.2	80.1	114.5	116.4	171.6	96.9	106.1	84.5	93.0	97.0	125.3	103.8	100.6
September	70.1	69.8	82.6	110.7	115.8	148.1	86.0	107.2	79.9	93.2	96.8	130.1	104.6	94.6
October	69.0	71.9	83.0	106.5	114.3	132.1	83.6	109.6	77.8	92.4	96.7	131.7	106.9	94.5
November	67.4	69.9	77.2	96.2	111.0	141.2	82.2	108.2	73.6	90.6	97.1	134.6	104.9	93.6
December	68.2	69.5	72.1	104.8	115.4	143.5	82.2	107.9	71.6	91.4	97.1	131.8	101.8	93.0
Annual	74.1	74.4	85.1	106.7	113.6	125.4	86.8	105.4	83.5	96.4	96.5	127.8	104.8	96.6
2006														
January	75.6	69.1	73.4	109.8	116.0	144.3	86.3	111.8	68.7	92.0	96.5	128.3	103.0	95.3
February	76.2	66.6	72.3	109.3	116.0	142.7	86.0	108.1	69.0	92.9	97.2	131.3	102.9	95.1
March	75.0	68.0	73.3	107.4	115.6	150.0	86.7	106.9	70.3	93.7	97.5	129.3	101.9	94.8
April	75.0	68.1	74.6	109.5	115.0	156.8	88.2	104.5	66.1	95.0	97.8	129.5	100.4	94.6
May	74.6	69.8	74.7	110.1	114.6	151.6	88.2	104.6	74.6	94.4	97.9	128.6	102.4	95.7
June	75.5	70.7	80.5	112.4	114.6	152.2	88.2	108.1	80.3	94.5	97.9	127.4	104.6	97.1
July	73.4	71.7	75.4	109.7	119.0	155.2	88.0	108.3	79.6	94.6	98.1	124.7	103.8	96.6
August	69.7	74.6	77.3	114.4	123.3	217.4	92.5	107.1	78.8	92.0	98.5	129.1	104.0	98.9
September	70.3	72.2	83.6	115.9	122.2	167.2	89.2	108.3	75.8	92.3	98.6	131.9	104.3	97.6
October	74.7	70.4	81.5	117.5	119.5	143.0	87.7	104.6	70.9	91.4	97.9	131.9	101.7	95.5
November	79.2	78.5	94.1	127.6	117.1	146.7	92.9	98.5	69.4	91.3	97.9	133.8	99.2	96.6
December	79.8	85.2	96.2	114.7	115.7	153.9	94.6	96.9	70.4	92.2	97.9	135.1	99.4	97.1
Annual	74.8	71.8	82.1	113.7	118.1	153.5	88.8	105.3	72.7	93.1	97.7	130.0	102.2	96.1
Importance of group in current month¹														
December	12.1	9.0	2.6	1.1	3.1	2.7	39.8	18.9	14.0	6.3	1.9	16.7	60.2	100.0

1. Weights for sub-indexes do not add up to total index due to other crops and other livestock not shown in this table.

Concepts, methodology and data quality

The following information should be used to ensure a clear understanding of the basic concepts that define the data provided in this product, of the underlying methodology of the index, and of key aspects of the data quality. This information will provide you with a better understanding of the strengths and limitations of the data, and of how they can be effectively used and analyzed. The information may be of particular importance to you when making comparisons with data from other sources of information, and in drawing conclusions regarding the significance of changes between different years, or of the differences in index movements between different regions.

Data sources and methodology

The **Farm Product Price Index (FPPI)** measures the change through time in prices received for agricultural commodities at the first transaction point.

General methodology

The FPPI is an annually linked chain index with different index baskets for each calendar month of the year. The index expresses current farm prices as a percentage of prices prevailing in the base period.

Reference period

The FPPI compares, in percentage terms, prices producers received in any given time period to prices in the official base year, which is 1997=100. The reference period for the data collection and compilation is the calendar month. The monthly index is released approximately eight weeks after the end of the reference month. The annual index, which is a weighted average of the monthly indexes, is released with the December index.

Weights and linking

The FPPI is based on a five-year basket that is updated every year. This captures the continual shifts in agricultural commodities produced and sold. The annual weight base is derived from the farm cash receipts series, Catalogue no. 21-011-X. There is a two-year lag in the years used to construct the basket because of the availability of farm cash receipts data and to reduce the number of revisions made to the index. Therefore, the years used to construct the basket for year y are $y-6$ to $y-2$.

The seasonal weighting pattern was derived using the monthly marketings from 1994 to 1998. This weighting pattern remains constant and will only be updated periodically, for instance during intercensal revisions or when the time base is revised.

The annual basket is linked into the index every year at the year and not at the month of December.

The current index will be linked back to 1935.

The FPPI has undergone numerous rebasings and reweighting phases during its fifty-year history.

Text table 1
FPPI numerous rebasings and reweighting phases during its fifty-year history

Date of introduction	Basket reference period	Scope of basket	Time base
August 1946	1935-1939	1935-1956	1935-1939=100
September 1969	1960-1962	1957-1970	1961=100
August 1978	1971	1971-1980	1971=100
December 1986	1981-1984	1981-1991	1981=100
March 1990	1981-1984	1991-1996	1986=100
April 2001	Annually updated 5 year average	1992 to present	1997=100

Revisions

Data are subject to revision in the event of late receipt of initial or revised data.

During the current calendar year, all months within that calendar year may be subject to revisions. Twice a year, in May and November, revisions to previous years may be incorporated; the previous two years in May and the previous three years in November. Every five years, the index can undergo an historical revision, based on the results of the Census of Agriculture, which affects both prices and quantities. The monthly distribution of commodities is reviewed during the incorporation of Census revisions.

For grains delivered to the Canadian Wheat Board or the Ontario Wheat Producers Marketing Board, the retroactive inclusion of adjustment, interim or final payments may cause changes to the index. In comparing current index numbers with those prior to the final payments being accrued, the following points should be considered. Any subsequent adjustment payments are added to the prices used and the index revised upward accordingly. An increase of \$10.00 per tonne in the price of CWB wheat or barley would result in upward revisions in the total indexes for each of the Prairie provinces, in points, as illustrated below.

Text table 2
Upward revisions in the total indexes for Ontario and the Prairie Provinces

Grains	Ontario	Manitoba	Saskatchewan	Alberta	British Columbia	Canada
Wheat	0.0	1.2	2.2	1.0	0.1	0.7
Barley	..	0.2	0.5	0.4	0.0	0.2

Seasonal adjustment

The FPPI is not adjusted for seasonality, but the seasonal basket is used since the marketing of virtually all farm products is seasonal. The index reflects the mix of agriculture commodities sold in a given month.

Concepts and variables measured

Price coverage

The FPPI includes all farm products sold off the farm, which are estimated in the farm cash receipts series published in **Farm Cash Receipts - Agriculture Economic Statistics**, catalogue no. 21-011-X.

Prices are based on either administrative data sources, or monthly surveys of agricultural producers or commodity purchasers. Where possible, administrative data sources are used to reduce response burden. The commodity price is collected at point of first transaction, where the fees deducted before a producer is paid are excluded (e.g., storage, transportation and administrative costs), but any bonuses and premiums that can be attributed to specific commodities are included. Commodity-specific program payments are not included in the price.

Administrative price data come from a wide variety of sources. Many are collected directly from marketing boards, for example, the Ontario Wheat Producers Marketing Board and the Nova Scotia Grain Marketing Board; market associations such as CANFAX. Some are collected and processed by provincial agricultural or statistical departments. Some data are generated from the regulatory activities of Agriculture and Agri-Food Canada and the Canadian Wheat Board.

Where administrative data are not available, prices are collected using the monthly Farm Product Prices Survey, which consists of a series of surveys. There are two farm surveys: the monthly farm Potato Prices Survey and the quarterly farm Ontario Tame Hay and Straw Prices Survey. The reference date for the farm surveys is the 15th of each month and prices are collected by telephone during the five working days following the 15th.

There are two monthly company surveys: the Non- Board Grains and Speciality Crops Survey in the Prairies and the Grain Survey in the Maritimes. Administrative data, the Non-Board Grains and Specialty Crops Survey and the Maritime Grain Survey cover activity for the whole reference month, producing average weighted prices that reflect grades marketed.

There are some commodities within the farm cash receipts series that do not have prices; there are only values. These are generally smaller commodities such as maple, forest, floriculture and nursery products, and the other fruit and vegetable categories. The farm cash receipts for these unpriced items are used to establish the basket shares of these items, while their price movement comes from the aggregate index under which the item falls. For instance, the total vegetable index would be used to proxy the “other vegetable” category.

Data accuracy

The methodology of the index and the price series which construct the index have been designed to control error and to reduce the potential effects of these. However, both administrative and survey data are subject to various kinds of errors. Survey data are mainly subject to response and data capture errors. In reporting prices each month, farm survey respondents are asked to report the average prices prevailing in their neighborhood, taking into account the various grades of each commodity marketed. Thus, average prices reported by these respondents may differ from month to month due to changes in price, quality or both.

Every effort is made to ensure that administrative data are conceptually correct for the use to which they are put. Users should be aware that administrative data are generally compiled for an organization’s own needs, and not for survey purposes. Any anomalies or inconsistencies detected are verified with the source, and where necessary, adjustments are made to reconcile data with the conceptual framework of our series. The administrative agencies used are considered to be the best sources available, and data received from them is judged to be of very good quality, even in those circumstances where adjustments have been made. Much price data come from the accounting

departments of various marketing agencies, and are originally used to issue cheques to producers, are audited, and so quality is deemed to be excellent.

Comparability of data and related sources

The current methodology (a chained index with monthly baskets) was applied to the index starting with 1992; there was no change in methodology for the indexes before 1992. Although the index levels of the 1997=100 series will be different from those of the 1986=100 series, they will continue to show the same percent changes for the period ending in December 1991. The index prior to 1992 was constructed as a chain fixed-basket index.

Since the index is chained annually, measures of twelve-month price change are not measures of pure price change, as they would be in a direct seasonal basket index, but are distorted by basket shifts.

However, since we calculate unlinked indexes for year $y-1$ and y based on the basket for years $y-6$ to $y-2$, we use this unlinked index to derive a measure of pure price change between any month m of year $y-1$ and the same month of year y .

The current index includes all farm cash receipts in the basket, whereas the previous index, prior to 1992, had been based upon products that account for about 95% of total farm cash receipts from farming operations. Commodities included in the index vary by province, reflecting the regional agricultural production. For instance there are no special crop sub-indexes in the Maritime provinces.

Other quality indicators and assessments

Statistics Canada had been using the 1980 Standard Industrial Classification system (SIC) for collecting, compiling and disseminating economic statistics on Canada's businesses. Beginning with the 1997 reference year, the North American Industry Classification System (NAICS) was introduced. It adds hatcheries and farms with only Christmas trees to the agricultural sector. The index base weights used for the commodities affected by NAICS were adjusted to reflect the new classification in 1997.