

Table 1/Tableau 1
 Respiratory Virus Detections/Isolations for the week ending February 17, 2007 (Reporting Week 200707)
 Détection/isolement de virus des voies respiratoires pour la semaine se terminant le 17 février 2007 (Code hebdomadaire 200707)

Reporting Laboratory Laboratoire rapporteur	Flu/Grippe Test	Flu/Grippe A Pos.	Flu/Grippe B Pos.	R.S.V. Test	R.S.V. Pos.	PIV Test	PIV 1 Pos.	PIV 2 Pos.	PIV 3 Pos.	PIV 4 Pos.	Other/Autre PIV Pos.	Adeno Test	Adeno Pos.
Newfoundland./Terre-Neuve	-	-	-	-	-	-	-	-	-	-	-	-	-
Prince Edward Island./ Île-du-Prince-Édouard	19	13	0	29	2	19	0	0	0	0	0	19	0
Nova Scotia/Nouvelle-Écosse	37	17	0	37	1	20	0	0	0	0	0	20	0
New Brunswick/Nouveau-Brunswick	72	18	0	26	0	26	0	0	0	0	0	26	0
Atlantic/Atlantique	128	48	0	92	3	65	0	0	0	0	0	65	0
Région Nord-Est	49	6	0	22	7	0	0	0	0	0	0	0	0
Québec-Chaudière-Appalaches	155	16	3	128	17	81	0	0	1	0	0	107	4
Centre-du-Québec	140	15	8	59	14	12	0	0	0	0	0	12	0
Montréal-Laval	345	28	2	263	20	196	2	0	3	0	0	215	5
Ouest du Québec	64	18	1	15	5	0	0	0	0	0	0	0	0
Montérégie	95	21	1	20	6	0	0	0	0	0	0	0	0
Province of/de Québec **	848	104	15	507	69	289	2	0	4	0	0	334	9
Ottawa P.H.L.	-	-	-	-	-	-	-	-	-	-	-	-	-
CHEO/HEEO - Ottawa	96	11	0	96	25	96	0	0	1	0	0	96	0
Kingston	79	18	0	79	5	79	0	3	3	0	0	79	0
Toronto Medical Laboratory	35	3	0	35	1	35	0	0	0	0	0	35	0
C.P.H.L. - Toronto	388	65	0	406	18	369	0	1	8	0	0	369	4
Sick Kids/Hospital - Toronto	135	15	0	135	17	135	0	0	0	0	0	135	4
Sunnybrook & Women's College HSC	21	9	0	21	0	21	0	0	0	0	0	21	0
Sault Ste. Marie	12	3	0	12	4	12	0	0	0	0	0	12	0
Timmins	30	8	0	30	2	30	0	0	0	0	0	30	0
St. Joseph's - London	49	15	0	49	11	49	0	0	1	0	0	49	0
London P.H.L.	138	40	0	138	17	138	1	0	3	0	0	138	0
Orillia P.H.L.	93	22	0	93	11	93	0	0	1	0	0	93	1
Windsor	19	4	0	29	0	18	0	0	0	0	0	18	1
Thunder Bay	42	4	0	42	6	42	0	0	1	0	0	42	0
Sudbury P.H.L.	14	5	0	14	0	14	0	0	0	0	0	14	0
Hamilton P.H.L.	13	1	0	21	3	13	0	0	0	0	0	13	0
Peterborough P.H.L.	99	36	0	99	4	99	0	0	0	0	0	99	0
Province of/de l'Ontario	1263	259	0	1299	124	1243	1	4	18	0	0	1243	10
Manitoba	63	3	0	76	3	56	0	0	2	0	0	56	1
Regina	156	19	0	156	0	156	0	0	0	0	0	156	0
Saskatoon	24	2	0	20	2	24	0	0	0	0	1	24	0
Province of/de la Saskatchewan	180	21	0	176	2	180	0	0	0	0	1	180	0
Calgary	296	29	0	146	18	146	0	0	0	0	5	117	2
Edmonton	507	29	1	520	119	506	0	0	0	0	16	210	9
Province of/de l'Alberta	803	58	1	666	137	652	0	0	0	0	21	327	11
Prairies	1046	82	1	918	142	888	0	0	2	0	22	563	12
British Columbia/Colombie-Britannique	396	102	4	396	2	396	0	1	0	0	0	396	1
CANADA	3681	595	20	3212	340	2881	3	5	24	0	22	2601	32

Also available at: <http://www.phac-aspc.gc.ca/bid-bmi/dsd-dsm/rvdi-divr/index-html>

**** UPDATED DATA FROM QUEBEC**

Aussi disponible sur le site: http://www.phac-aspc.gc.ca/bid-bmi/dsd-dsm/rvdi-divr/index_f.html

Table 2/Tableau 2

Respiratory Virus Detections/Isolations for the period August 27, 2006 - February 17, 2007
 Détection/isolement de virus des voies respiratoires pour la période du 27 août 2006 - 17 février 2007
 (Reporting Weeks 200635 -200707/Code hebdomadaire 200635-200707)

Reporting Laboratory Laboratoire rapporteur	Flu/Grippe Test	Flu/Grippe A Pos.	Flu/Grippe B Pos.	R.S.V. Test	R.S.V. Pos.	PIV Test	PIV 1 Pos.	PIV 2 Pos.	PIV 3 Pos.	PIV 4 Pos.	Other/Autre PIV Pos.	Adeno Test	Adeno Pos.
Newfoundland./Terre-Neuve	302	16	0	197	42	61	1	1	4	0	0	52	0
Prince Edward Island./ Île-du-Prince-Édouard	66	15	0	150	34	66	0	0	8	0	0	66	0
Nova Scotia/Nouvelle-Écosse	508	33	0	508	27	437	0	2	19	0	0	437	5
New Brunswick/Nouveau-Brunswick	627	21	0	320	11	284	0	0	5	0	0	287	5
Atlantic/Atlantique	1503	85	0	1175	114	848	1	3	36	0	0	842	10
Région Nord-Est	664	10	1	487	175	0	0	0	0	0	0	0	0
Québec-Chaudière-Appalaches	1651	41	9	2454	525	1220	0	1	28	8	0	1738	61
Centre-du-Québec	1349	35	15	1241	446	234	0	0	1	0	0	246	3
Montréal-Laval	5333	92	15	7163	1515	5313	11	2	54	22	0	5776	135
Ouest du Québec	517	40	5	614	287	0	0	0	0	0	0	0	0
Montréal	673	45	1	630	290	0	0	0	0	0	0	0	0
Province of/de Québec **	10187	263	46	12589	3238	6767	11	3	83	30	0	7760	199
Ottawa P.H.L.	73	3	0	23	1	0	0	0	0	0	0	0	0
CHEO/HEEO - Ottawa	1277	24	1	1277	501	1277	0	0	16	0	0	1277	19
Kingston	836	51	0	836	72	836	1	4	22	0	0	836	5
Toronto Medical Laboratory	714	12	0	714	61	714	0	0	6	0	0	714	0
C.P.H.L. - Toronto	6304	415	0	6830	643	5941	21	3	100	21	0	5941	52
Sick Kids' Hospital - Toronto	2534	102	3	2534	450	2534	7	1	43	0	0	2534	36
Sunnybrook & Women's College HSC	324	18	0	324	8	324	0	0	1	0	0	324	0
Sault Ste. Marie	146	9	0	146	37	146	0	1	7	0	0	146	1
Timmins	223	9	0	223	50	223	0	0	3	1	0	223	3
St.Joseph's-London	570	27	5	570	134	570	0	0	5	0	1	570	2
London P.H.L.	2372	318	1	2372	294	2372	2	0	59	2	0	2372	15
Orillia P.H.L.	886	76	0	886	121	886	2	1	26	0	7	886	16
Windsor	341	25	0	345	12	215	0	0	2	1	0	215	1
Thunder Bay	233	20	0	223	25	233	0	0	5	4	0	233	3
Sudbury P.H.L.	218	15	0	218	17	218	0	0	8	0	0	231	3
Hamilton P.H.L.	279	23	0	339	45	279	0	2	1	0	0	279	0
Peterborough P.H.L.	1054	123	0	1054	145	1054	1	1	18	0	0	1054	4
Province of/de l'Ontario	18384	1270	10	18914	2616	17822	34	13	322	29	8	17835	160
Manitoba	1383	21	0	1686	193	1306	0	2	55	0	0	1306	17
Regina	3020	133	0	3020	332	3020	0	18	106	0	0	3020	31
Saskatoon	742	40	1	651	203	744	0	0	0	0	42	744	9
Province of/de la Saskatchewan	3762	173	1	3671	535	3764	0	18	106	0	42	3764	40
Calgary	6016	249	2	3101	168	3101	0	0	0	0	122	2538	43
Edmonton	7847	455	8	7996	1575	7492	0	0	0	0	500	3116	196
Province of/de l'Alberta	13863	704	10	11097	1743	10593	0	0	0	0	622	5654	239
Prairies	19008	898	11	16454	2471	15663	0	20	161	0	664	10724	296
British Columbia/Colombie-Britannique	2732	319	23	2732	26	2732	2	10	14	0	0	2732	14
CANADA	51814	2835	90	51864	8465	43832	48	49	616	59	672	39893	679

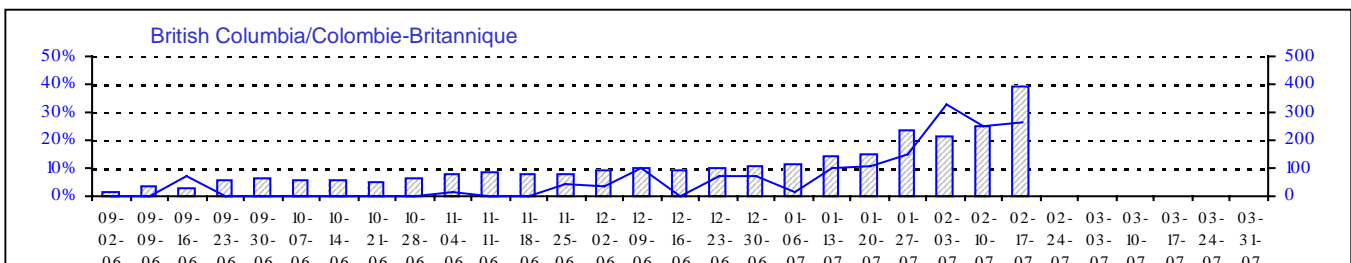
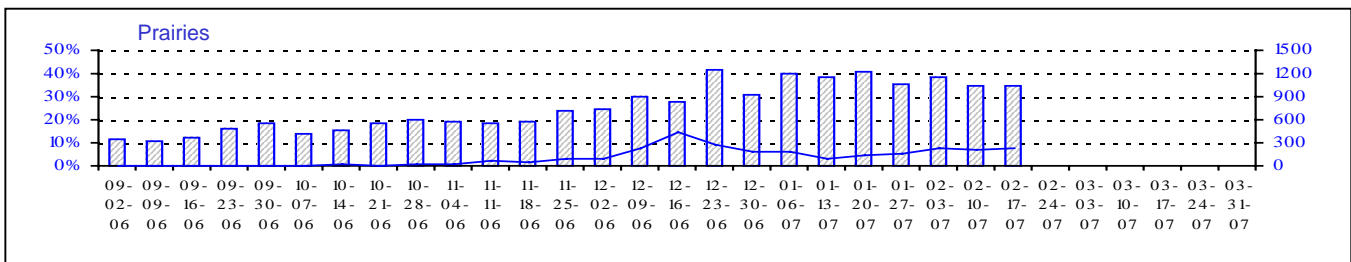
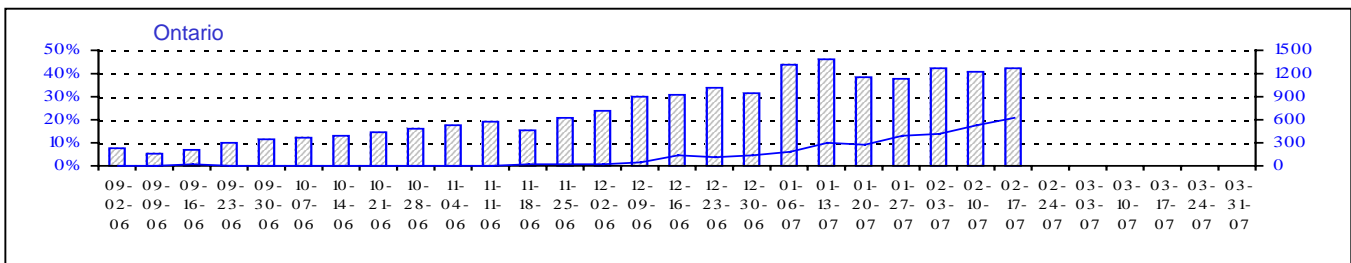
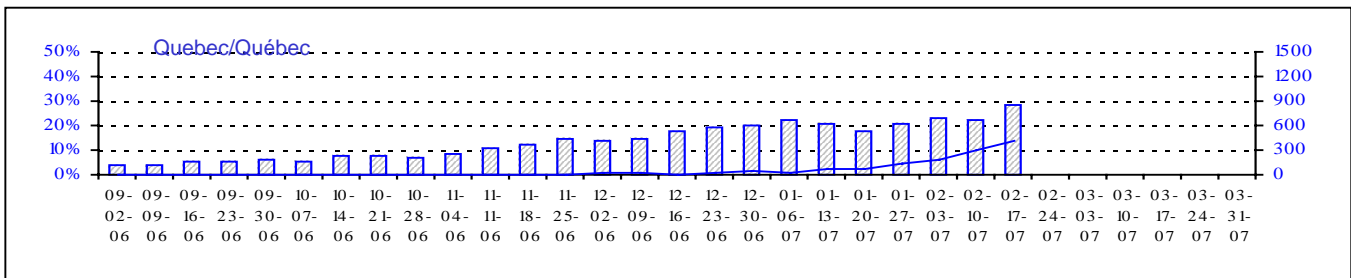
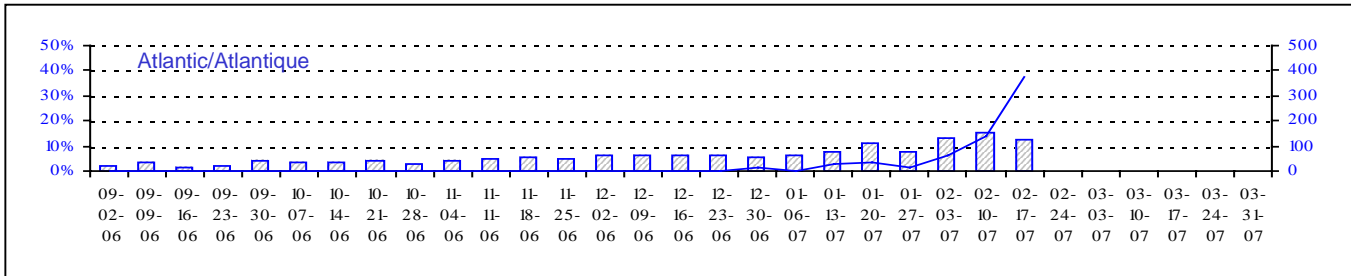
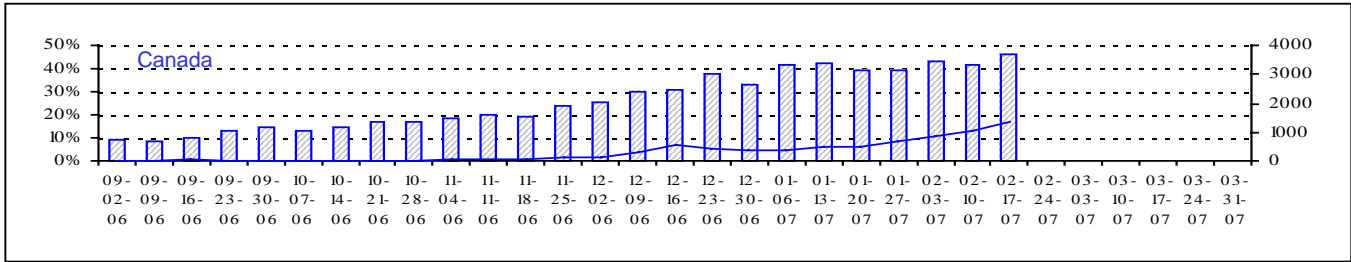
Also available at: <http://www.phac-aspc.gc.ca/bid-bmi/dsd-dsm/rvdi-divr/index.html>

** UPDATED Quebec data

Aussi disponible sur le site: http://www.phac-aspc.gc.ca/bid-bmi/dsd-dsm/rvdi-divr/index_f.html

Positive Influenza Tests (%) in Canada by Region by Week of Report

Détection du virus grippal au Canada, tests positifs (%) par région par semaine de déclaration

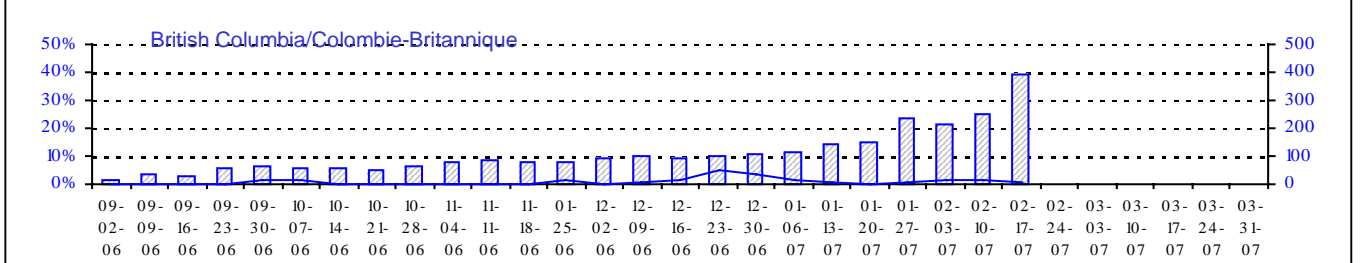
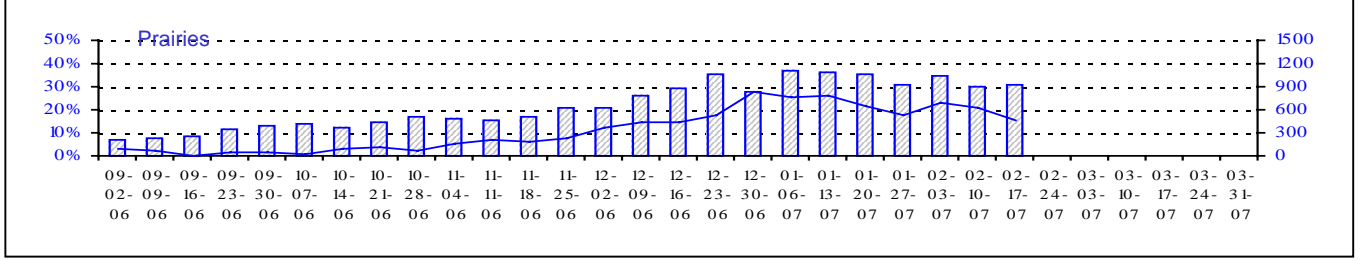
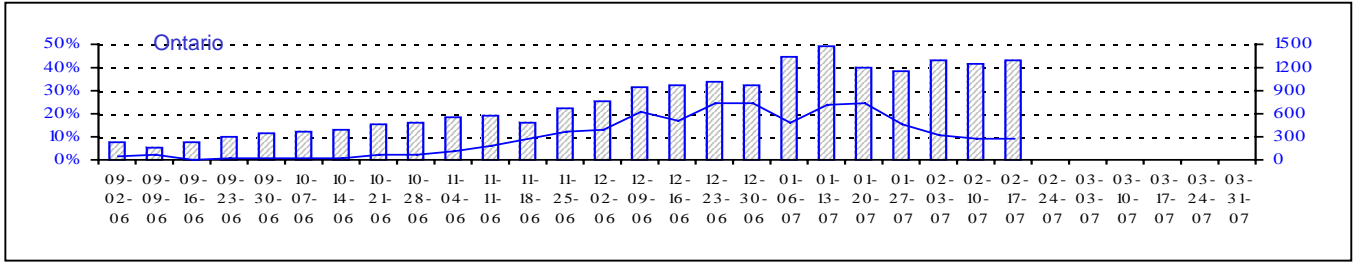
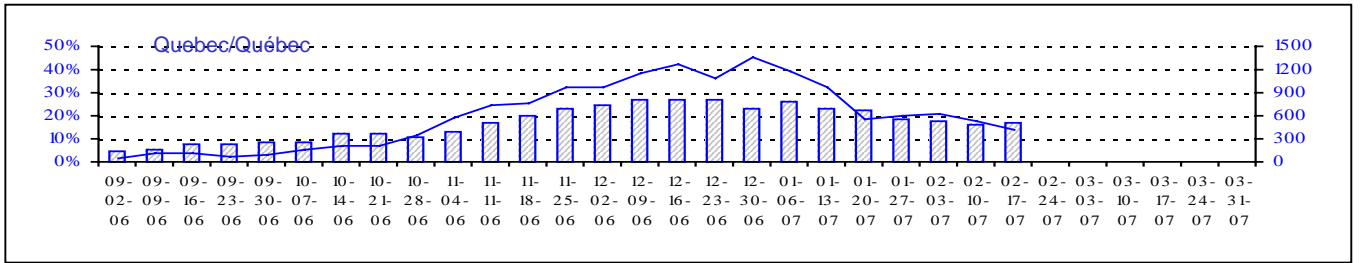
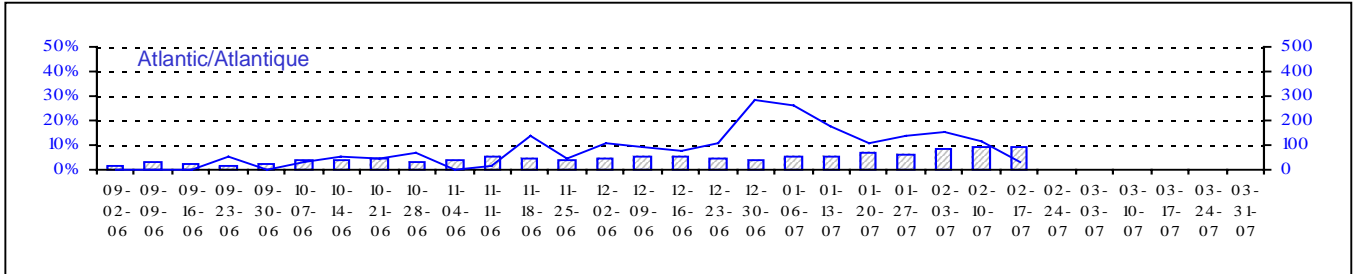
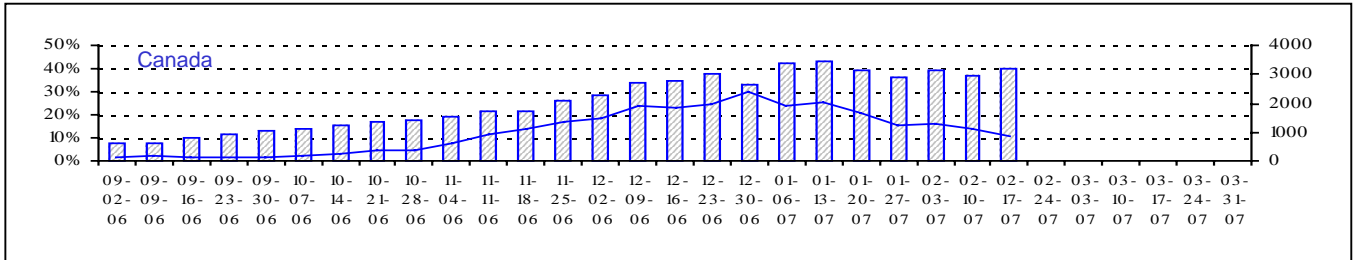


Total Tests
 % Tests Positive

Total Tests Total

Positive RSV Tests (%) in Canada by Region by Week of Report

Détection du virus respiratoire syncytial au Canada, tests positifs (%) par région par semaine de déclaration

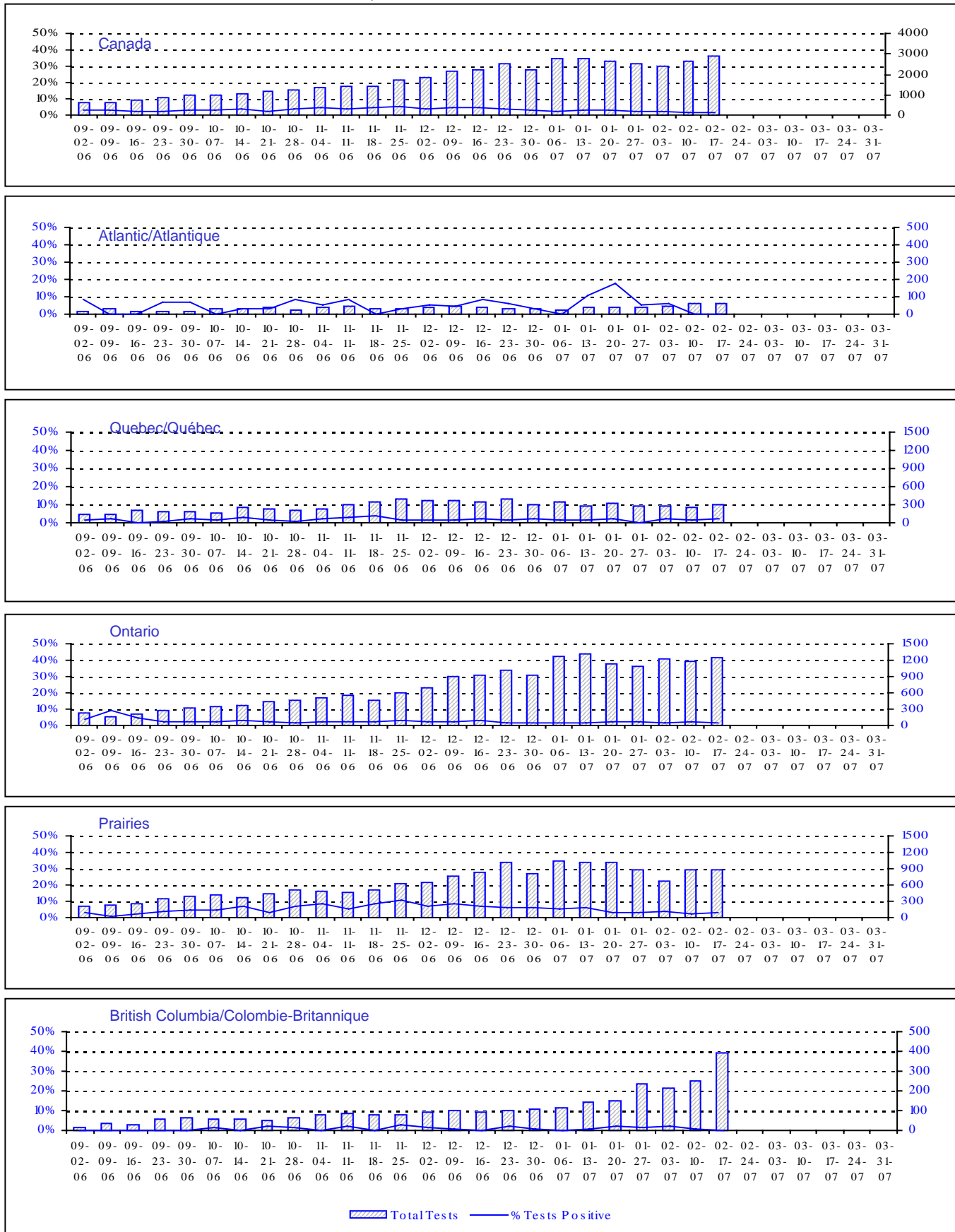


Total Tests
 % Positive

Total Tests Total

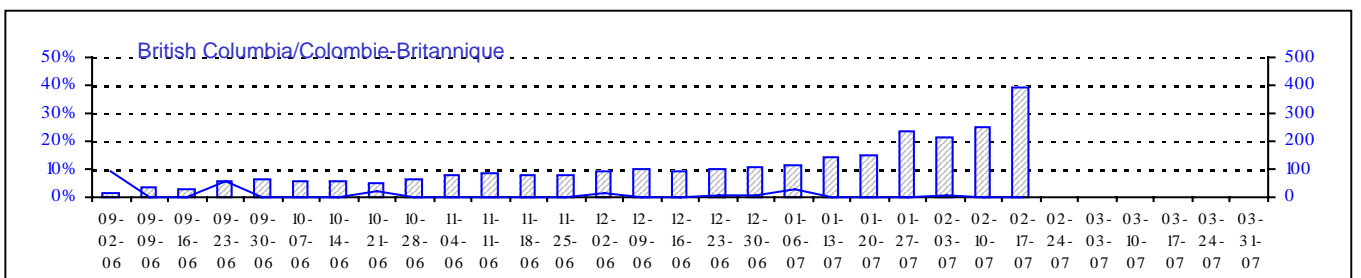
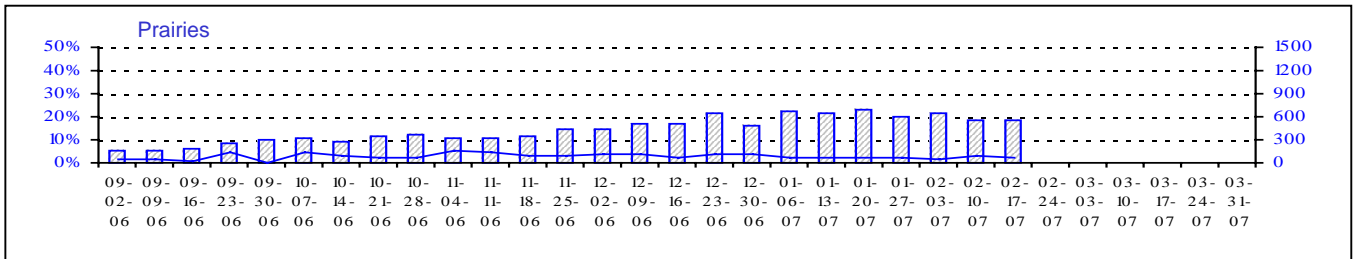
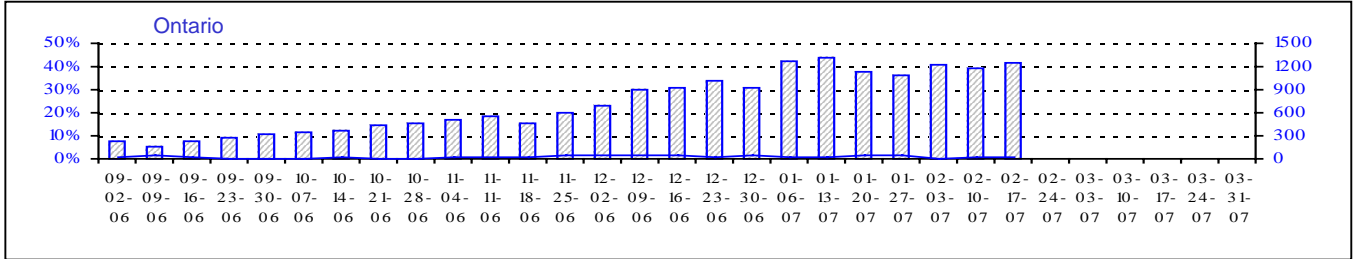
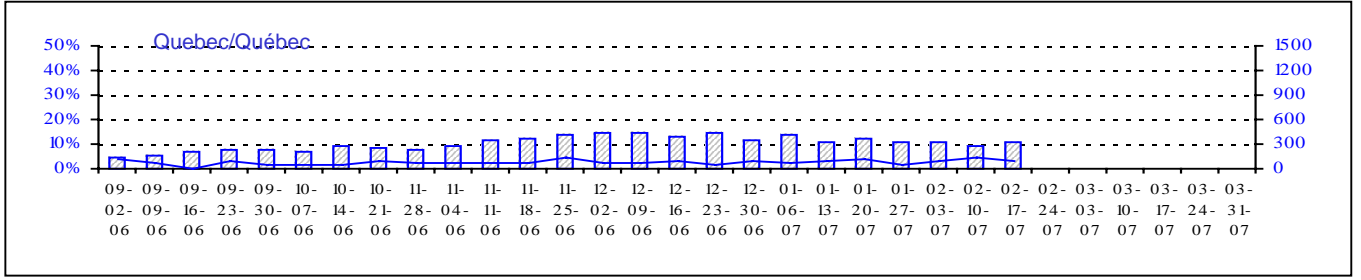
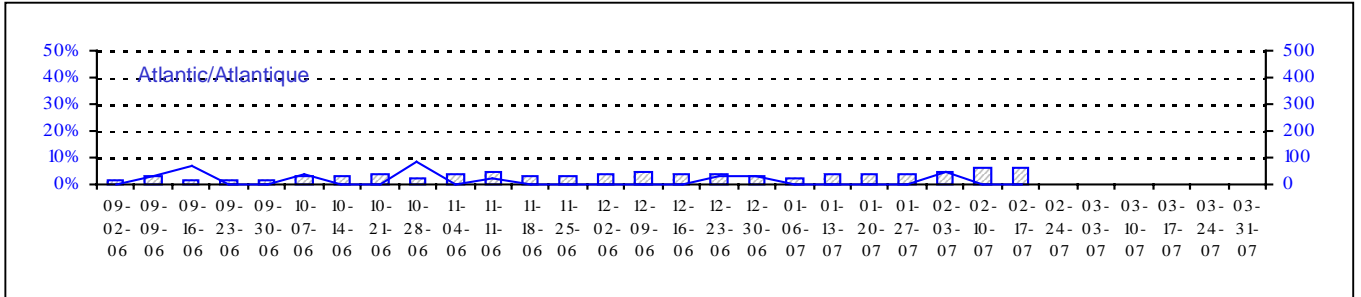
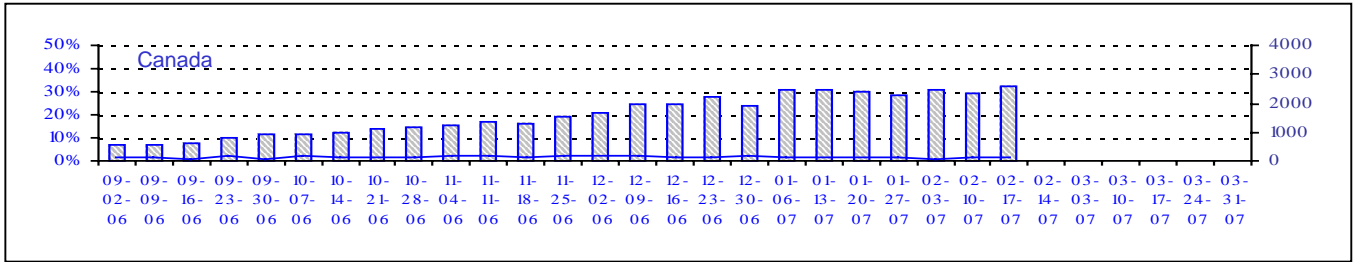
Positive Parainfluenza Tests (%) in Canada by Region by Week of Report

Détection du virus parainfluenza au Canada, tests positifs (%) par région par semaine de déclaration



Positive Adenovirus Tests (%) in Canada by Region by Week of Report

Détection des adénovirus au Canada, tests positifs (%) par région par semaine de déclaration



Total Tests
 % Tests Positive

Total Tests Total