

Table 1/Tableau 1
Respiratory Virus Detections/Isolations for the week ending February 24, 2007 (Reporting Week 200708)
Détection/isolement de virus des voies respiratoires pour la semaine se terminant le 24 février 2007 (Code hebdomadaire 200708)

Reporting Laboratory Laboratoire rapporteur	Flu/Grippe Test	Flu/Grippe A Pos.	Flu/Grippe B Pos.	R.S.V. Test	R.S.V. Pos.	PIV Test	PIV 1 Pos.	PIV 2 Pos.	PIV 3 Pos.	PIV 4 Pos.	Other/Autre PIV Pos.	Adeno Test	Adeno Pos.
Newfoundland./Terre-Neuve	104	41	0	16	7	5	0	0	0	0	0	9	0
Prince Edward Island./ Île-du-Prince-Édouard	12	6	0	23	6	12	0	0	0	0	0	12	0
Nova Scotia/Nouvelle-Écosse	57	0	0	57	6	17	0	1	0	0	0	17	2
New Brunswick/Nouveau-Brunswick	113	15	0	32	1	31	0	0	0	0	0	31	0
Atlantic/Atlantique	286	62	0	128	20	65	0	1	0	0	0	69	2
Région Nord-Est	55	16	1	30	9	0	0	0	0	0	0	0	0
Québec-Chaudière-Appalaches	173	27	10	127	15	78	0	0	0	0	0	97	5
Centre-du-Québec	153	18	10	56	7	13	0	0	0	0	0	13	0
Montréal-Laval	466	71	4	316	12	245	0	0	2	2	0	274	3
Ouest du Québec	117	37	3	24	2	0	0	0	0	0	0	0	0
Montérégie	86	27	2	24	8	0	0	0	0	0	0	0	0
Province of/de Québec	1050	196	30	577	53	336	0	0	2	2	0	384	8
Ottawa P.H.L.	-	-	-	-	-	-	-	-	-	-	-	-	-
CHEO/HEEO - Ottawa	-	-	-	-	-	-	-	-	-	-	-	-	-
Kingston	-	-	-	-	-	-	-	-	-	-	-	-	-
Toronto Medical Laboratory	43	3	0	43	1	43	0	0	1	0	0	43	0
C.P.H.L. - Toronto	342	70	0	351	18	313	1	0	3	1	0	313	2
Sick Kids/Hospital - Toronto	147	21	0	147	9	147	0	0	4	0	0	147	3
Sunnybrook & Women's College HSC	28	1	0	28	0	28	0	0	0	0	0	28	0
Sault Ste. Marie	17	3	0	17	3	17	0	0	0	0	0	17	0
Timmins	30	11	0	30	2	30	0	0	1	0	0	30	1
St. Joseph's - London	53	8	0	53	5	53	0	0	1	0	1	53	0
London P.H.L.	107	23	0	107	14	107	0	0	1	0	0	107	0
Orillia P.H.L.	53	23	0	53	4	53	0	0	0	0	0	53	0
Windsor	43	5	0	43	1	32	0	0	0	0	0	32	0
Thunder Bay	40	12	0	40	1	40	0	0	0	0	0	40	0
Sudbury P.H.L.	28	10	0	28	1	28	0	0	0	0	0	28	0
Hamilton P.H.L.	24	5	0	28	6	24	0	0	0	0	0	24	0
Peterborough P.H.L.	114	26	0	114	4	114	0	0	1	0	0	114	0
Province of/de l'Ontario	1069	221	0	1082	69	1029	1	0	12	1	1	1029	6
Manitoba	85	7	0	102	2	72	0	0	1	0	0	72	0
Regina	113	27	0	113	18	113	0	2	0	0	0	113	1
Saskatoon	14	2	0	12	2	14	0	0	0	0	0	14	0
Province of/de la Saskatchewan	127	29	0	125	20	127	0	2	0	0	0	127	1
Calgary	304	16	1	148	15	148	0	0	0	0	4	112	2
Edmonton	459	38	1	476	108	458	0	0	0	0	11	182	15
Province of/de l'Alberta	763	54	2	624	123	606	0	0	0	0	15	294	17
Prairies	975	90	2	851	145	805	0	2	1	0	15	493	18
British Columbia/Colombie-Britannique	259	32	6	259	6	259	0	2	3	1	0	259	1
CANADA	3639	601	38	2897	293	2494	1	5	18	4	16	2234	35

Also available at: <http://www.phac-aspc.gc.ca/bid-bmi/dsd-dsm/rvdi-divr/index.html>

Aussi disponible sur le site: http://www.phac-aspc.gc.ca/bid-bmi/dsd-dsm/rvdi-divr/index_f.html

Table 2/Tableau 2

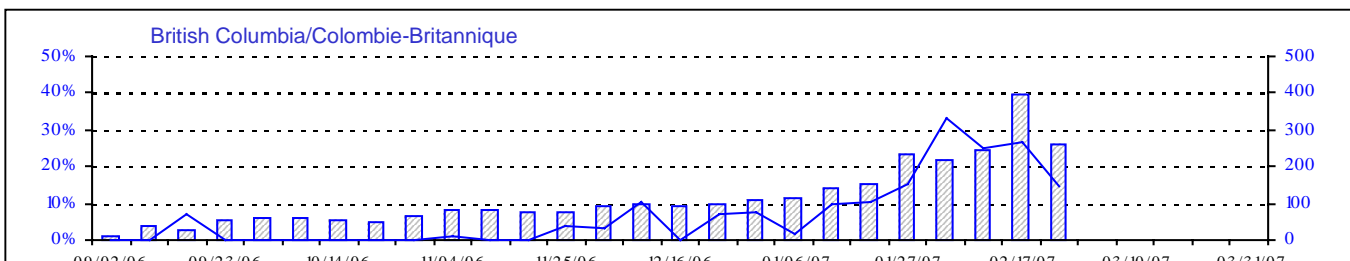
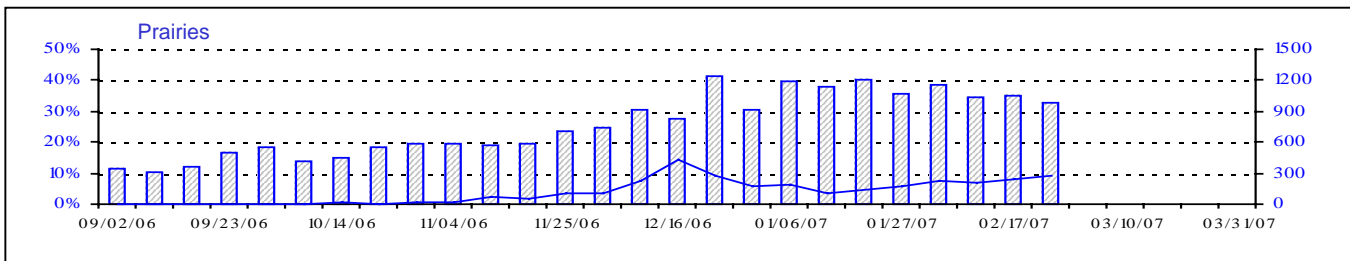
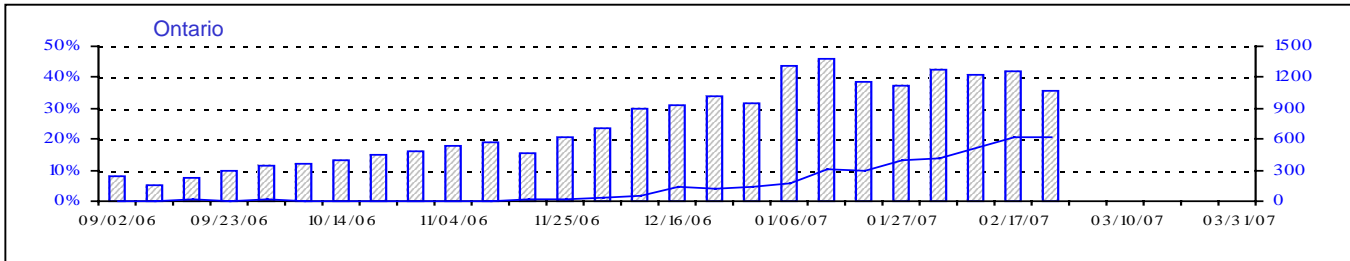
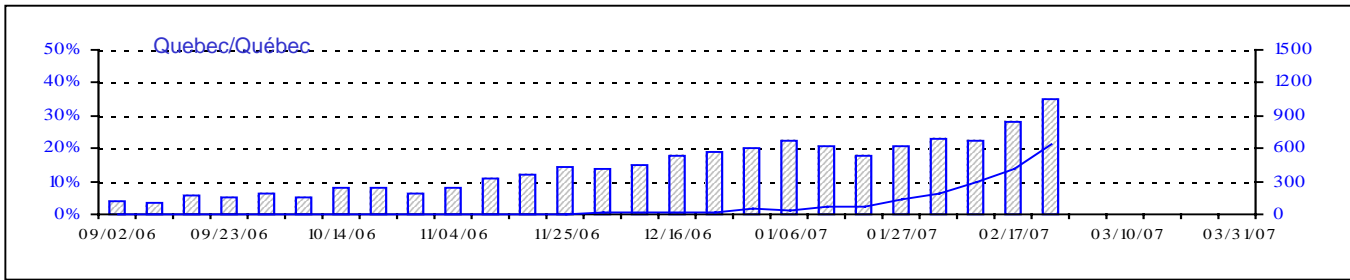
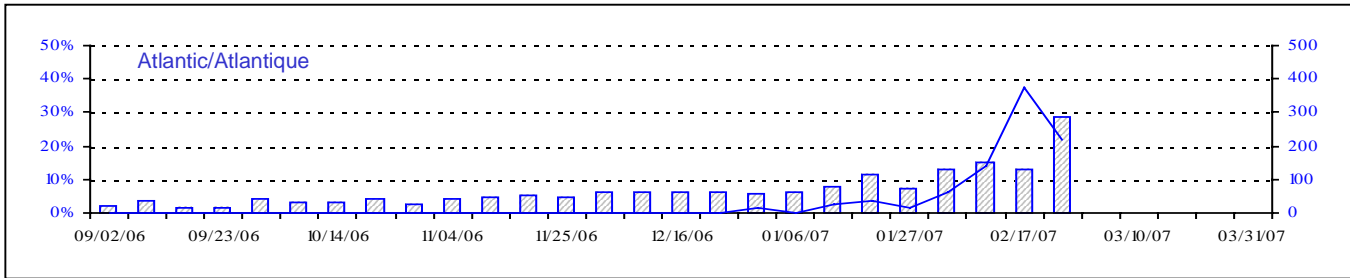
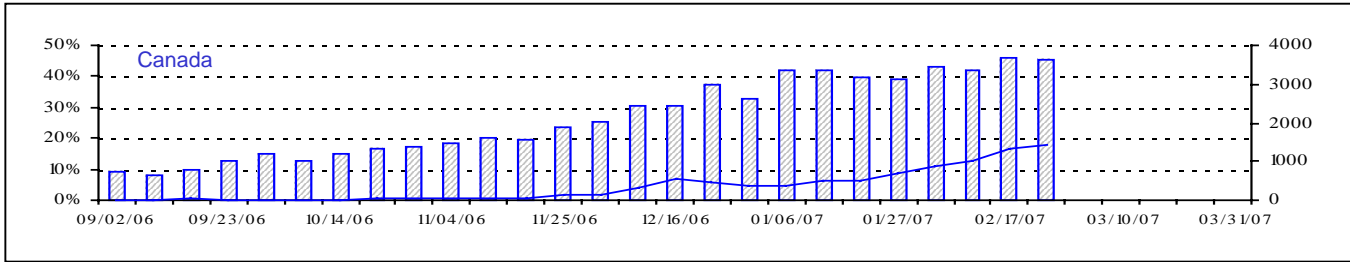
Respiratory Virus Detections/Isolations for the period August 27, 2006 - February 24, 2007
 Détection/isolement de virus des voies respiratoires pour la période du 27 août 2006 - 24 février 2007
 (Reporting Weeks 200635 -200708/Code hebdomadaire 200635-200708)

Reporting Laboratory Laboratoire rapporteur	Flu/Grippe Test	Flu/Grippe A Pos.	Flu/Grippe B Pos.	R.S.V. Test	R.S.V. Pos.	PIV Test	PIV 1 Pos.	PIV 2 Pos.	PIV 3 Pos.	PIV 4 Pos.	Other/Autre PIV Pos.	Adeno Test	Adeno Pos.
Newfoundland./Terre-Neuve	406	57	0	213	49	66	1	1	4	0	0	61	0
Prince Edward Island./ Île-du-Prince-Édouard	78	21	0	173	40	78	0	0	8	0	0	78	0
Nova Scotia/Nouvelle-Écosse	565	33	0	565	33	454	0	3	19	0	0	454	7
New Brunswick/Nouveau-Brunswick	740	36	0	352	12	315	0	0	5	0	0	318	5
Atlantic/Atlantique	1789	147	0	1303	134	913	1	4	36	0	0	911	12
Région Nord-Est	719	26	2	517	184	0	0	0	0	0	0	0	0
Québec-Chaudière-Appalaches	1824	68	19	2581	540	1298	0	1	28	8	0	1835	66
Centre-du-Québec	1502	53	25	1297	453	247	0	0	1	0	0	259	3
Montréal-Laval	5799	163	19	7479	1527	5558	11	2	56	24	0	6050	138
Ouest du Québec	634	77	8	638	289	0	0	0	0	0	0	0	0
Montréal	759	72	3	654	298	0	0	0	0	0	0	0	0
Province of/de Québec	11237	459	76	13166	3291	7103	11	3	85	32	0	8144	207
Ottawa P.H.L.	73	3	0	23	1	0	0	0	0	0	0	0	0
CHEO/HEEO - Ottawa	1277	24	1	1277	501	1277	0	0	16	0	0	1277	19
Kingston	836	51	0	836	72	836	1	4	22	0	0	836	5
Toronto Medical Laboratory	757	15	0	757	62	757	0	0	7	0	0	757	0
C.P.H.L. - Toronto	6646	485	0	7181	661	6254	22	3	103	22	0	6254	54
Sick Kids' Hospital - Toronto	2681	123	3	2681	459	2681	7	1	47	0	0	2681	39
Sunnybrook & Women's College HSC	352	19	0	352	8	352	0	0	1	0	0	352	0
Sault Ste. Marie	163	12	0	163	40	163	0	1	7	0	0	163	1
Timmins	253	20	0	253	52	253	0	0	4	1	0	253	4
St.Joseph's-London	623	35	5	623	139	623	0	0	6	0	2	623	2
London P.H.L.	2479	341	1	2479	308	2479	2	0	60	2	0	2479	15
Orillia P.H.L.	939	99	0	939	125	939	2	1	26	0	7	939	16
Windsor	384	30	0	388	13	247	0	0	2	1	0	247	1
Thunder Bay	273	32	0	263	26	273	0	0	5	4	0	273	3
Sudbury P.H.L.	246	25	0	246	18	246	0	0	8	0	0	259	3
Hamilton P.H.L.	303	28	0	367	51	303	0	2	1	0	0	303	0
Peterborough P.H.L.	1168	149	0	1168	149	1168	1	1	19	0	0	1168	4
Province of/de l'Ontario	19453	1491	10	19996	2685	18851	35	13	334	30	9	18864	166
Manitoba	1468	28	0	1788	195	1378	0	2	56	0	0	1378	17
Regina	3133	160	0	3133	350	3133	0	20	106	0	0	3133	32
Saskatoon	756	42	1	663	205	758	0	0	0	0	42	758	9
Province of/de la Saskatchewan	3889	202	1	3796	555	3891	0	20	106	0	42	3891	41
Calgary	6320	265	3	3249	183	3249	0	0	0	0	126	2650	45
Edmonton	8306	493	9	8472	1683	7950	0	0	0	0	511	3298	211
Province of/de l'Alberta	14626	758	12	11721	1866	11199	0	0	0	0	637	5948	256
Prairies	19983	988	13	17305	2616	16468	0	22	162	0	679	11217	314
British Columbia/Colombie-Britannique	2991	351	29	2991	32	2991	2	12	17	1	0	2991	15
CANADA	55453	3436	128	54761	8758	46326	49	54	634	63	688	42127	714

Also available at: <http://www.phac-aspc.gc.ca/bid-bmi/dsd-dsm/rvdi-divr/index.html>

Aussi disponible sur le site: http://www.phac-aspc.gc.ca/bid-bmi/dsd-dsm/rvdi-divr/index_f.html

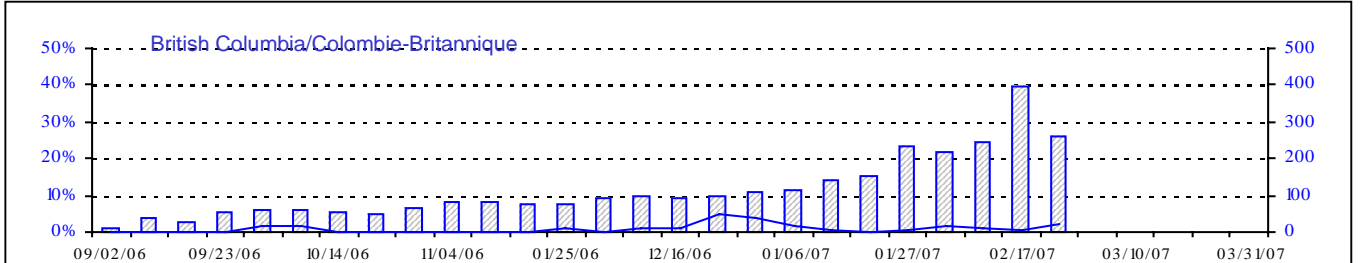
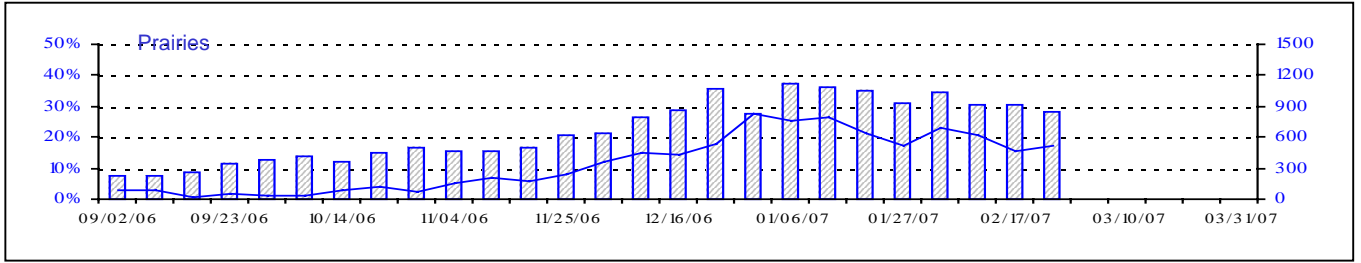
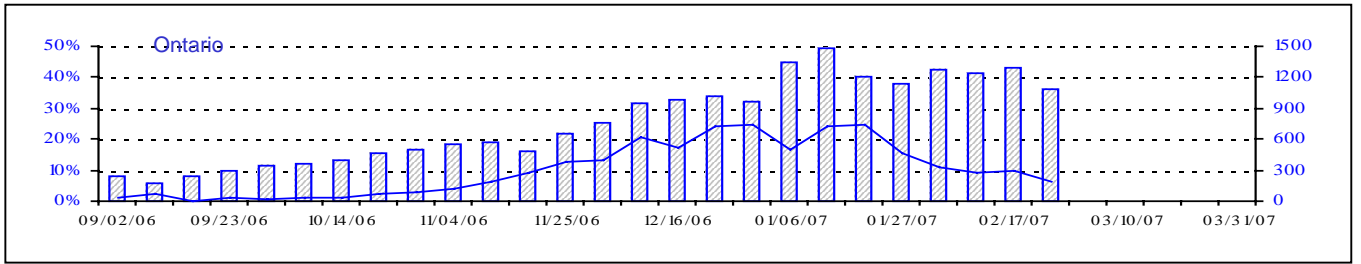
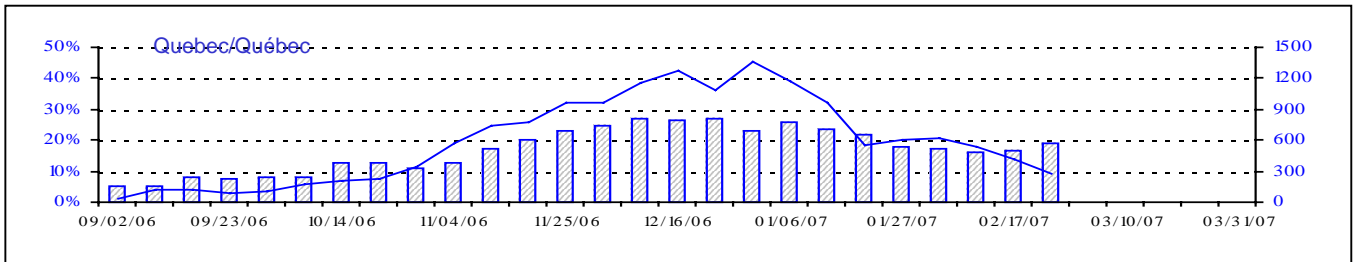
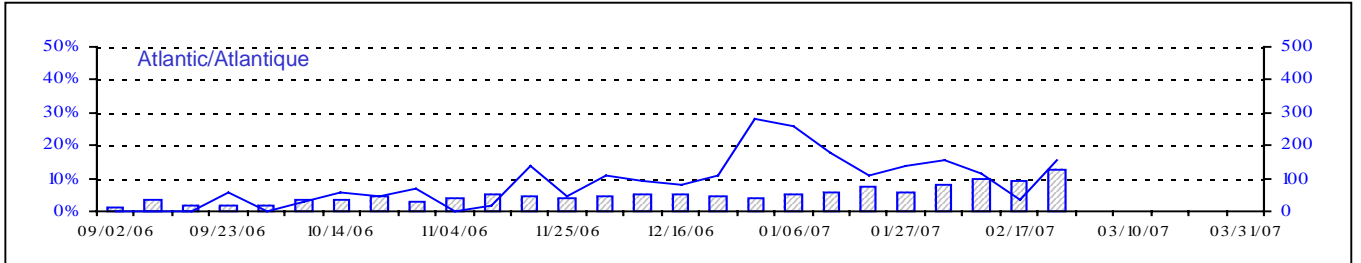
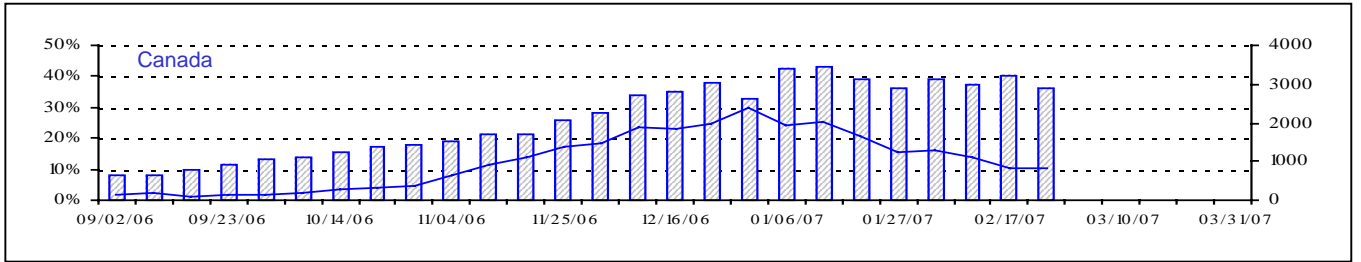
Positive Influenza Tests (%) in Canada by Region by Week of Report
 Détection du virus grippal au Canada, tests positifs (%) par région
 par semaine de déclaration



▨ Total Tests — % Tests Positive

Total Tests Total

Positive RSV Tests (%) in Canada by Region by Week of Report
 Détection du virus respiratoire syncytial au Canada, tests positifs (%) par région
 par semaine de déclaration

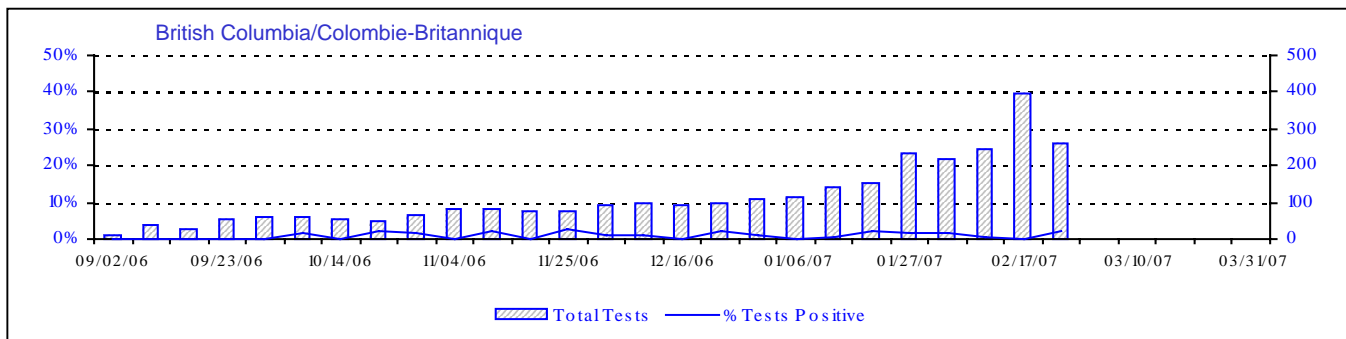
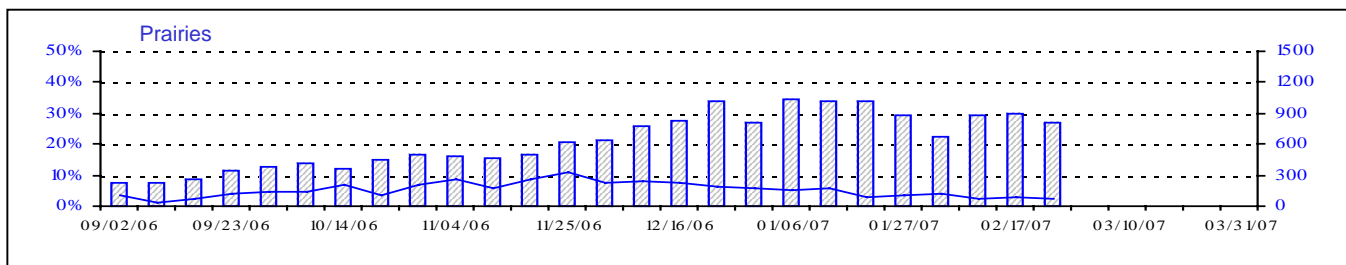
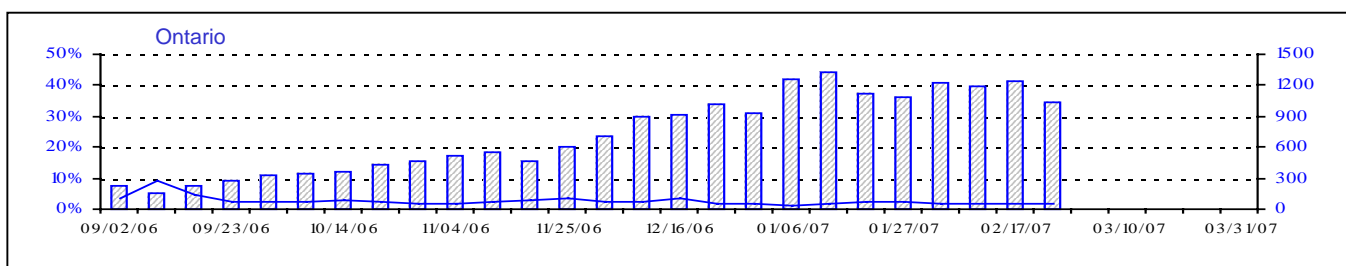
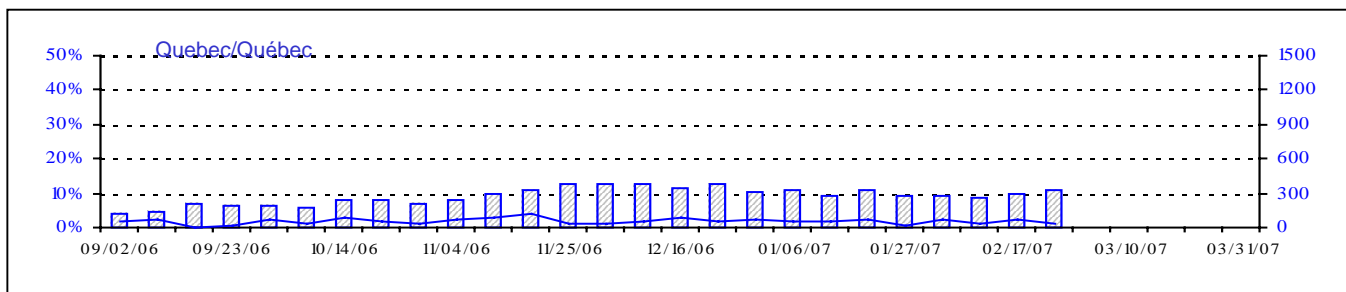
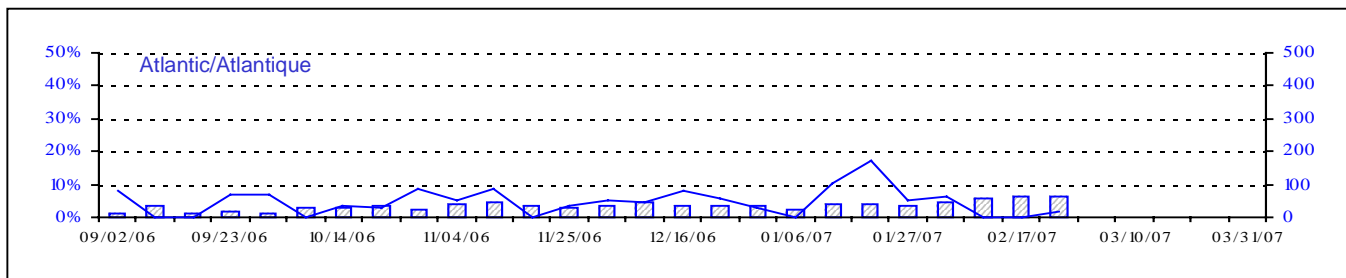
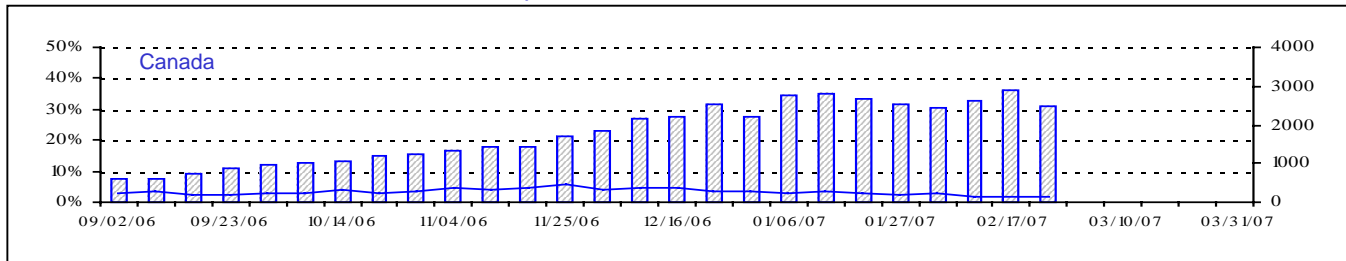


▨ Total Tests — % Positive

Total Tests Total

% Tests Positive/Positifs

Positive Parainfluenza Tests (%) in Canada by Region by Week of Report
 Détection du virus parainfluenza au Canada, tests positifs (%) par région
 par semaine de déclaration



Total Tests Total

▨ Total Tests — % Tests Positive

Positive Adenovirus Tests (%) in Canada by Region by Week of Report
 Détection des adénovirus au Canada, tests positifs (%) par région
 par semaine de déclaration

