

Table 1/Tableau 1
Respiratory Virus Detections/Isolations for the week ending March 24, 2007 (Reporting Week 200712)
Détection/isolement de virus des voies respiratoires pour la semaine se terminant le 24 mars 2007 (Code hebdomadaire 200712)

Reporting Laboratory Laboratoire rapporteur	Flu/Grippe Test	Flu/Grippe A Pos.	Flu/Grippe B Pos.	R.S.V. Test	R.S.V. Pos.	PIV Test	PIV 1 Pos.	PIV 2 Pos.	PIV 3 Pos.	PIV 4 Pos.	Other/Autre PIV Pos.	Adeno Test	Adeno Pos.
Newfoundland./Terre-Neuve	72	18	0	12	1	2	0	0	0	0	0	3	0
Prince Edward Island./ Île-du-Prince-Édouard	9	1	0	14	3	9	0	0	0	0	0	9	0
Nova Scotia/Nouvelle-Écosse	57	18	0	57	2	17	0	0	0	0	0	17	0
New Brunswick/Nouveau-Brunswick	69	21	1	62	2	62	0	0	0	0	0	62	0
Atlantic/Atlantique	207	58	1	145	8	90	0	0	0	0	0	91	0
Région Nord-Est	198	43	17	10	2	0	0	0	0	0	0	0	0
Québec-Chaudière-Appalaches	219	17	16	131	3	98	0	0	0	0	0	121	1
Centre-du-Québec	368	49	20	40	3	10	0	0	0	0	0	10	1
Montréal-Laval	363	29	13	301	17	244	0	0	4	0	0	282	9
Ouest du Québec	48	6	6	7	1	0	0	0	0	0	0	0	0
Montérégie	75	5	6	21	7	0	0	0	0	0	0	0	0
Province of/de Québec	1271	149	78	510	33	352	0	0	4	0	0	413	11
Ottawa P.H.L.	-	-	-	-	-	-	-	-	-	-	-	-	-
CHEO/HEEO - Ottawa	-	-	-	-	-	-	-	-	-	-	-	-	-
Kingston	59	7	1	59	3	59	0	0	3	0	0	59	0
Toronto Medical Laboratory	31	1	0	31	1	31	0	0	1	0	0	31	0
C.P.H.L. - Toronto	248	32	3	255	6	234	0	1	9	0	0	234	6
Sick Kids/Hospital - Toronto	93	1	0	93	2	93	0	0	3	0	0	93	4
Sunnybrook & Women's College HSC	20	0	0	20	0	20	0	0	0	0	0	20	0
Sault Ste. Marie	10	2	0	10	1	10	0	0	0	0	0	10	0
Timmins	5	4	0	5	1	5	0	0	0	0	0	5	0
St. Joseph's - London	15	0	0	15	0	15	0	0	1	0	0	15	0
London P.H.L.	53	4	0	53	5	53	0	0	2	0	0	53	0
Orillia P.H.L.	38	15	0	38	3	38	0	0	2	0	0	38	2
Windsor	12	2	1	12	1	12	0	0	0	0	0	12	1
Thunder Bay	22	3	0	22	5	22	0	0	3	0	0	22	0
Sudbury P.H.L.	9	0	0	9	0	9	0	0	0	0	0	9	0
Hamilton P.H.L.	5	0	0	9	0	5	0	0	0	0	0	5	0
Peterborough P.H.L.	45	12	0	45	8	45	0	0	3	0	0	45	0
Province of/de l'Ontario	665	83	5	676	36	651	0	1	27	0	0	651	13
Manitoba	42	3	0	44	2	40	0	0	1	0	0	40	0
Regina	128	18	0	128	7	128	0	0	3	0	0	128	2
Saskatoon	11	3	0	9	4	11	0	0	0	0	0	11	0
Province of/de la Saskatchewan	139	21	0	137	11	139	0	0	3	0	0	139	2
Calgary	272	10	0	132	8	131	0	0	0	0	8	86	2
Edmonton	471	23	1	475	47	470	0	0	0	0	8	216	17
Province of/de l'Alberta	743	33	1	607	55	601	0	0	0	0	16	302	19
Prairies	924	57	1	788	68	780	0	0	4	0	16	481	21
British Columbia/Colombie-Britannique	185	20	1	185	17	185	0	0	3	1	0	185	1
CANADA	3252	367	86	2304	162	2058	0	1	38	1	16	1821	46

Also available at: <http://www.phac-aspc.gc.ca/bid-bmi/dsd-dsm/rvdi-divr/index-html>

Aussi disponible sur le site: http://www.phac-aspc.gc.ca/bid-bmi/dsd-dsm/rvdi-divr/index_f.html

Table 2/Tableau 2

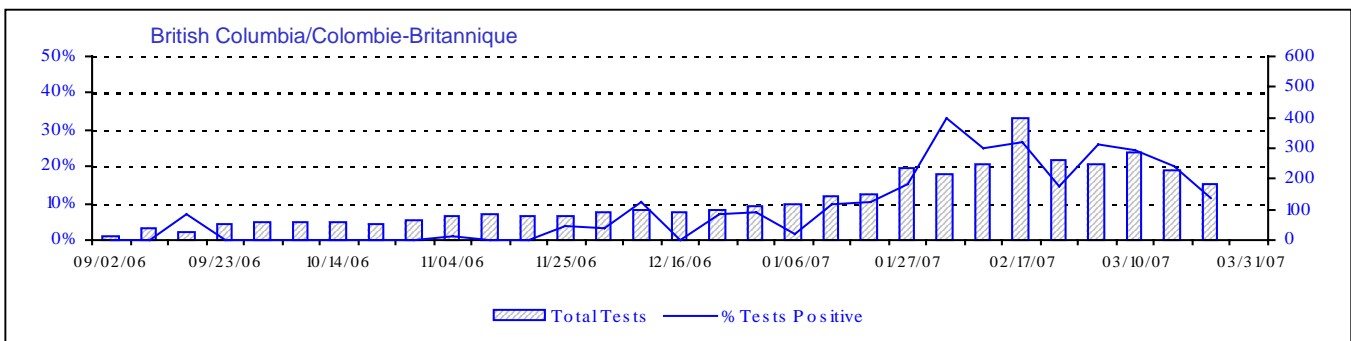
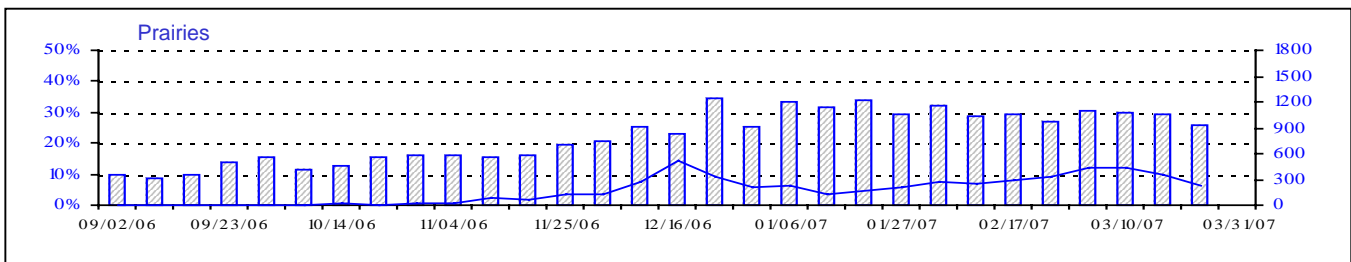
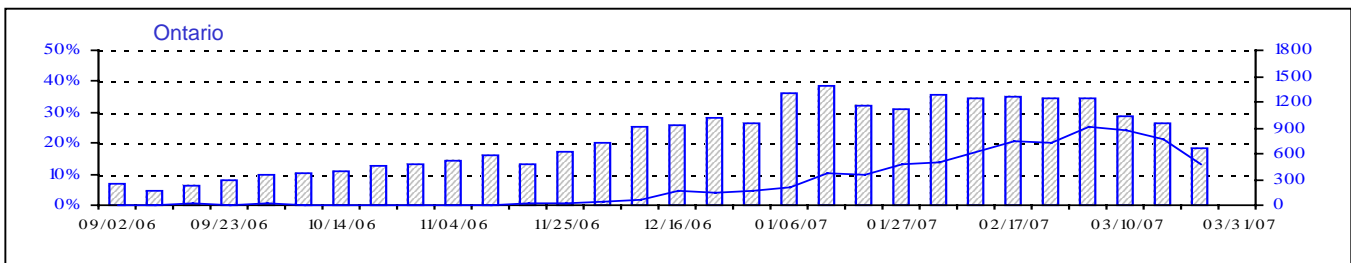
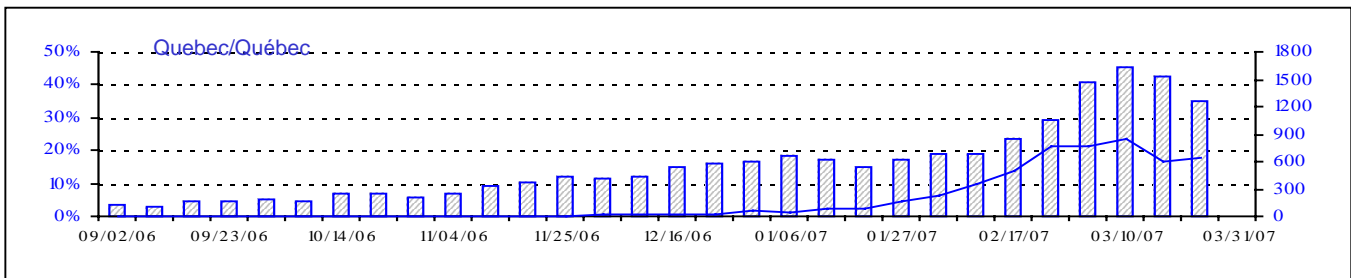
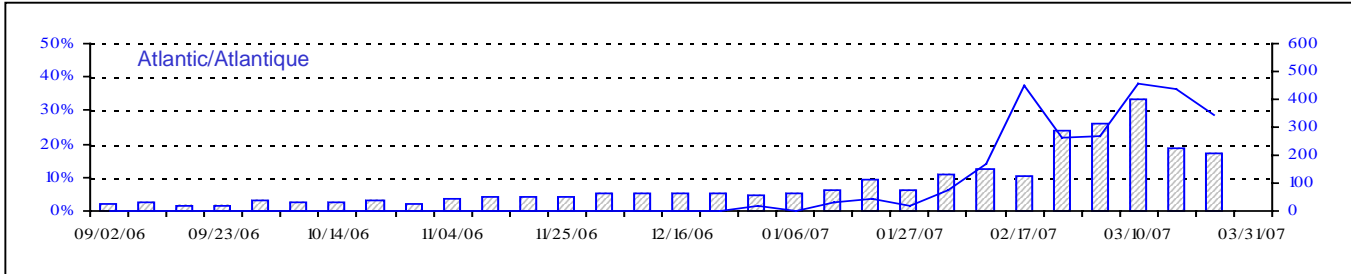
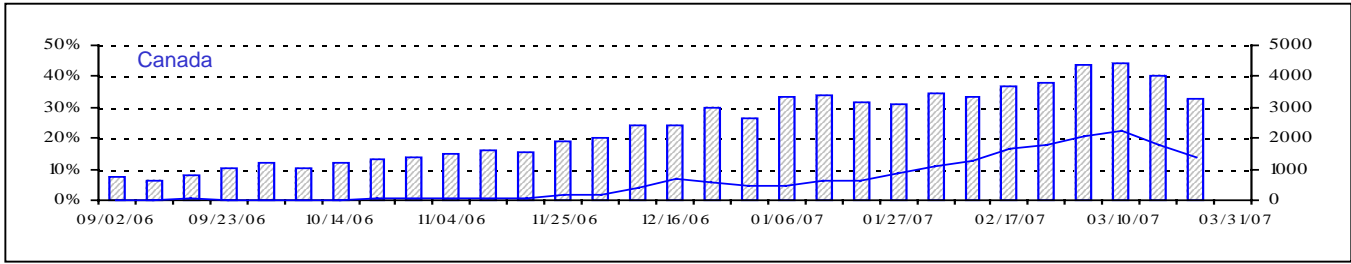
Respiratory Virus Detections/Isolations for the period August 27, 2006 - March 24, 2007
 Détection/isolement de virus des voies respiratoires pour la période du 27 août 2006 - 24 mars 2007
 (Reporting Weeks 200635 -200712/Code hebdomadaire 200635-200712)

Reporting Laboratory Laboratoire rapporteur	Flu/Grippe Test	Flu/Grippe A Pos.	Flu/Grippe B Pos.	R.S.V. Test	R.S.V. Pos.	PIV Test	PIV 1 Pos.	PIV 2 Pos.	PIV 3 Pos.	PIV 4 Pos.	Other/Autre PIV Pos.	Adeno Test	Adeno Pos.
Newfoundland./Terre-Neuve	761	137	0	261	56	81	1	1	5	0	0	66	0
Prince Edward Island./ Île-du-Prince-Édouard	97	29	0	211	48	97	0	0	8	0	0	97	0
Nova Scotia/Nouvelle-Écosse	776	105	0	776	50	535	0	3	19	0	0	535	8
New Brunswick/Nouveau-Brunswick	1298	238	1	814	14	777	0	0	5	0	0	780	7
Atlantic/Atlantique	2932	509	1	2062	168	1490	1	4	37	0	0	1478	15
Région Nord-Est	1511	193	40	607	205	0	0	0	0	0	0	0	0
Québec-Chaudière-Appalaches	2795	230	63	3228	571	1721	0	1	29	9	0	2378	79
Centre-du-Québec	2819	230	87	1482	474	287	0	0	2	0	0	299	4
Montréal-Laval	7916	467	82	8800	1601	6618	11	2	71	26	0	7230	160
Ouest du Québec	969	139	27	705	297	0	0	0	0	0	0	0	0
Montréal	1124	154	16	719	312	0	0	0	0	0	0	0	0
Province of/de Québec	17134	1413	315	15541	3460	8626	11	3	102	35	0	9907	243
Ottawa P.H.L.	113	6	0	44	1	0	0	0	0	0	0	0	0
CHEO/HEEO - Ottawa	1741	142	2	1741	547	1741	0	0	20	0	0	1741	24
Kingston	1209	143	2	1209	85	1209	1	5	27	0	0	1209	6
Toronto Medical Laboratory	902	19	0	902	65	902	0	0	10	0	0	902	1
C.P.H.L. - Toronto	7859	713	4	8435	703	7388	23	4	138	22	0	7388	79
Sick Kids' Hospital - Toronto	3110	147	3	3110	479	3110	8	1	63	0	0	3110	50
Sunnybrook & Women's College HSC	448	23	0	448	9	448	0	0	1	0	0	448	0
Sault Ste. Marie	213	23	0	213	50	213	0	1	7	0	0	213	1
Timmins	319	53	0	319	59	319	0	0	7	1	0	319	4
St.Joseph's-London	729	42	5	729	145	729	0	0	8	0	3	729	2
London P.H.L.	2774	430	1	2774	340	2774	2	0	65	2	0	2774	16
Orillia P.H.L.	1195	203	0	1195	145	1195	2	1	29	0	7	1195	20
Windsor	445	54	1	450	17	300	0	0	4	1	0	300	3
Thunder Bay	378	53	0	368	36	378	0	0	9	4	0	378	3
Sudbury P.H.L.	315	41	0	315	19	315	0	0	11	0	0	328	5
Hamilton P.H.L.	361	33	0	439	59	361	0	2	1	0	0	361	0
Peterborough P.H.L.	1438	246	0	1438	165	1438	2	1	23	0	0	1438	5
Province of/de l'Ontario	23549	2371	18	24129	2924	22820	38	15	423	30	10	22833	219
Manitoba	1719	65	0	2035	206	1585	0	2	62	0	0	1585	17
Regina	3615	217	0	3615	391	3615	0	22	109	0	0	3615	37
Saskatoon	822	48	2	717	225	824	0	0	0	0	45	824	9
Province of/de la Saskatchewan	4437	265	2	4332	616	4439	0	22	109	0	45	4439	46
Calgary	7673	367	8	3903	232	3902	0	0	0	0	149	3112	57
Edmonton	10312	705	13	10511	1979	9951	0	0	0	0	556	4143	265
Province of/de l'Alberta	17985	1072	21	14414	2211	13853	0	0	0	0	705	7255	322
Prairies	24141	1402	23	20781	3033	19877	0	24	171	0	750	13279	385
British Columbia/Colombie-Britannique	3934	548	32	3934	91	3934	2	13	23	4	0	3934	23
CANADA	71690	6243	389	66447	9676	56747	52	59	756	69	760	51431	885

Also available at: <http://www.phac-aspc.gc.ca/bid-bmi/dsd-dsm/rvdi-divr/index.html>

Aussi disponible sur le site: http://www.phac-aspc.gc.ca/bid-bmi/dsd-dsm/rvdi-divr/index_f.html

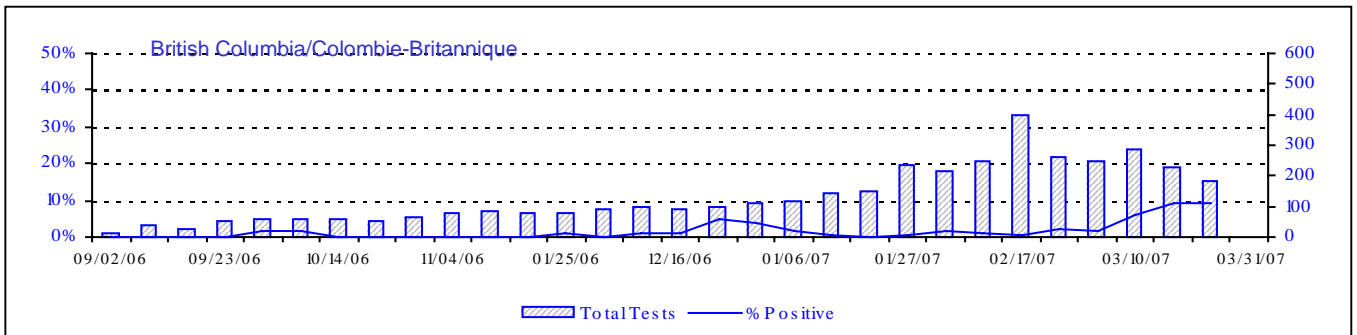
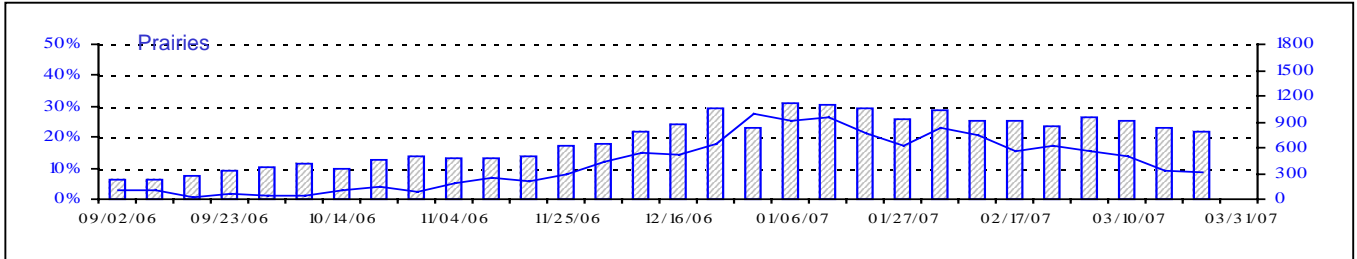
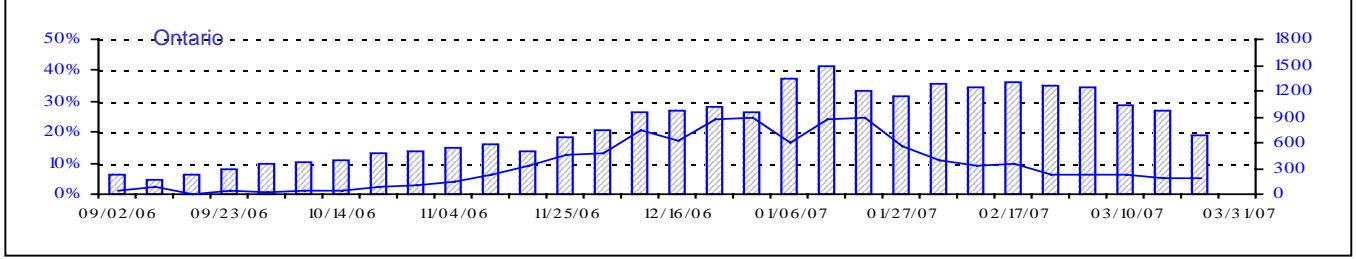
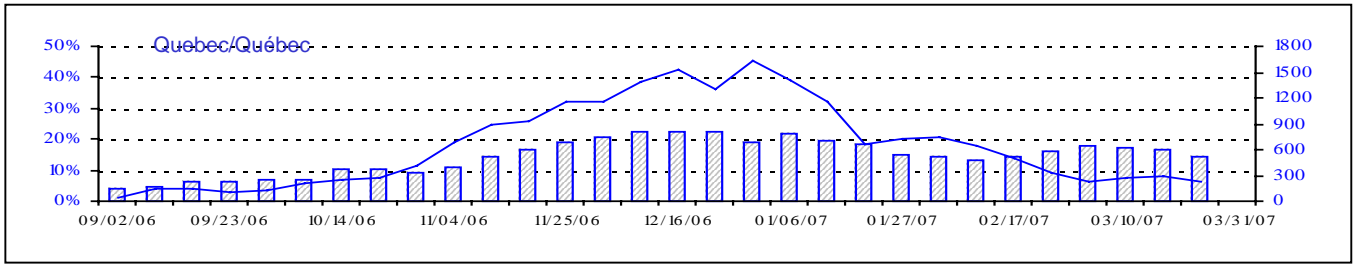
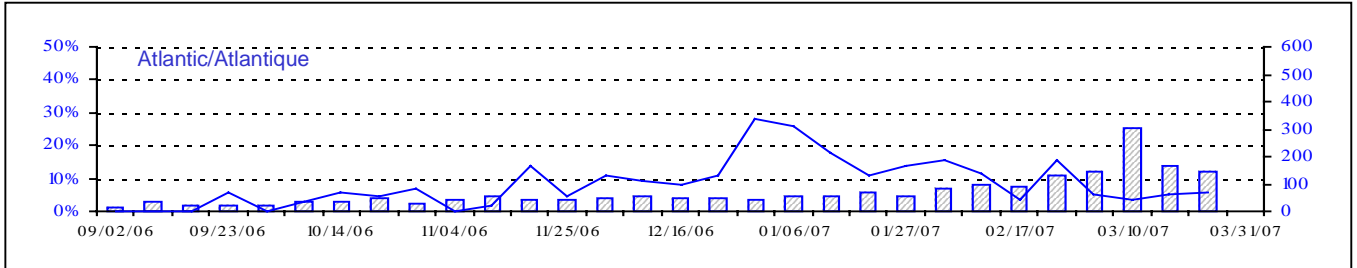
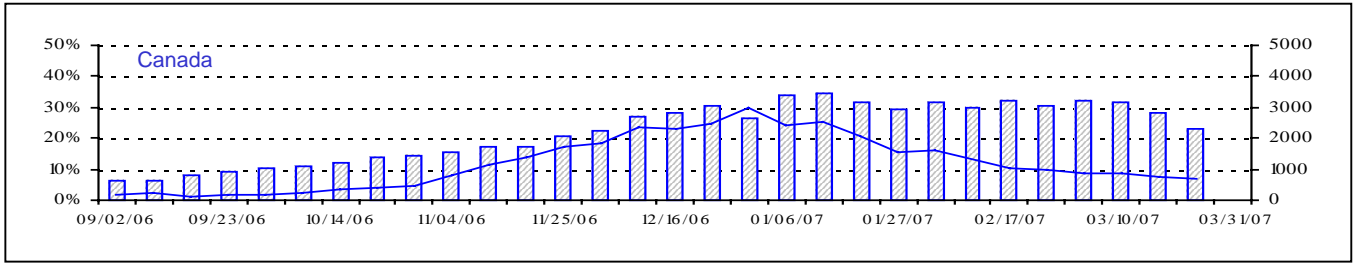
Positive Influenza Tests (%) in Canada by Region by Week of Report
 Détection du virus grippal au Canada, tests positifs (%) par région
 par semaine de déclaration



Total Tests Total

▨ Total Tests — % Tests Positive

Positive RSV Tests (%) in Canada by Region by Week of Report
 Détection du virus respiratoire syncytial au Canada, tests positifs (%) par région
 par semaine de déclaration

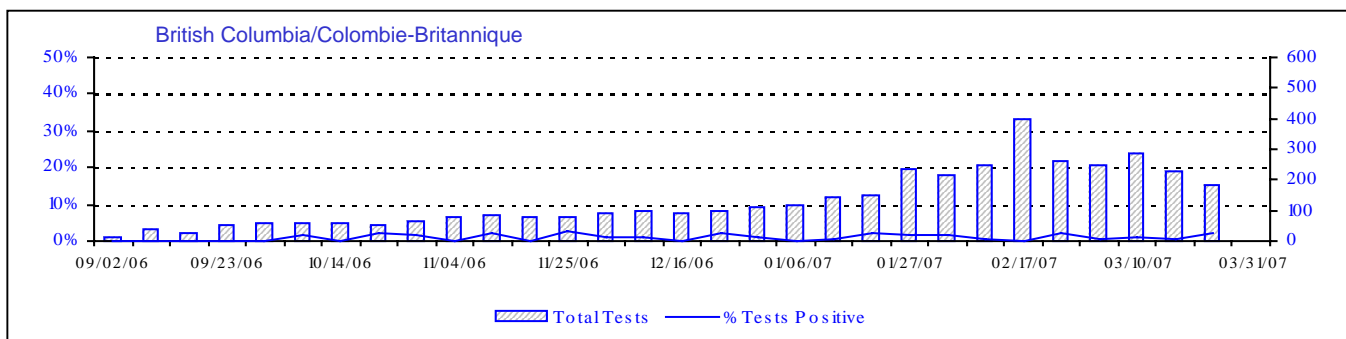
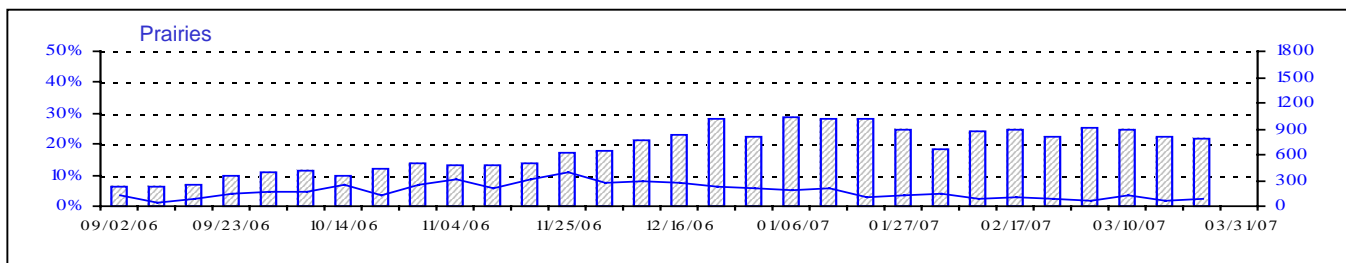
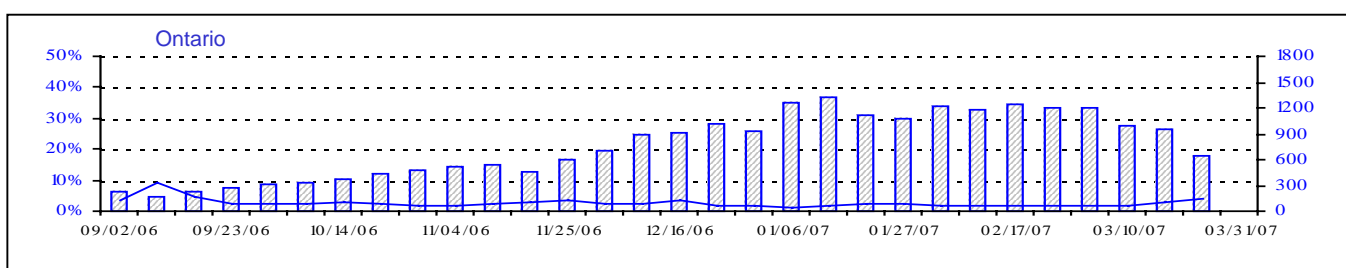
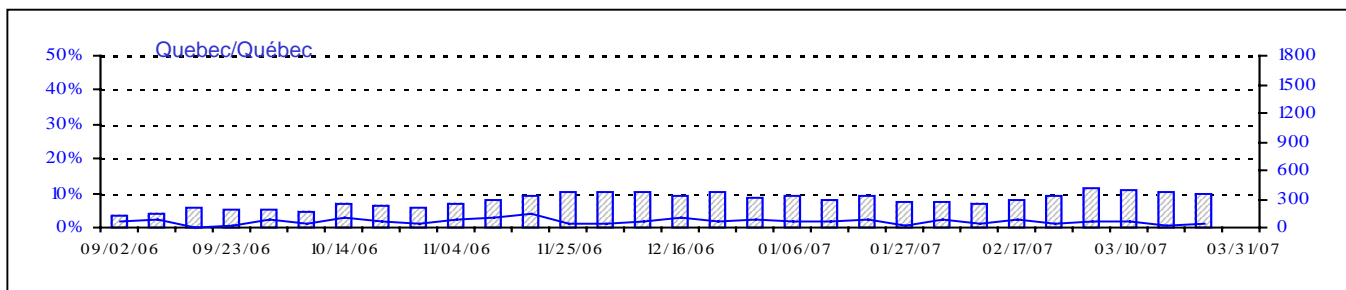
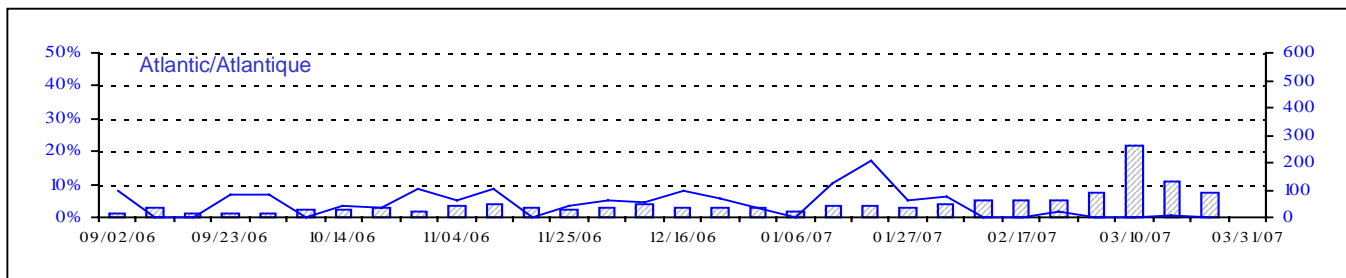
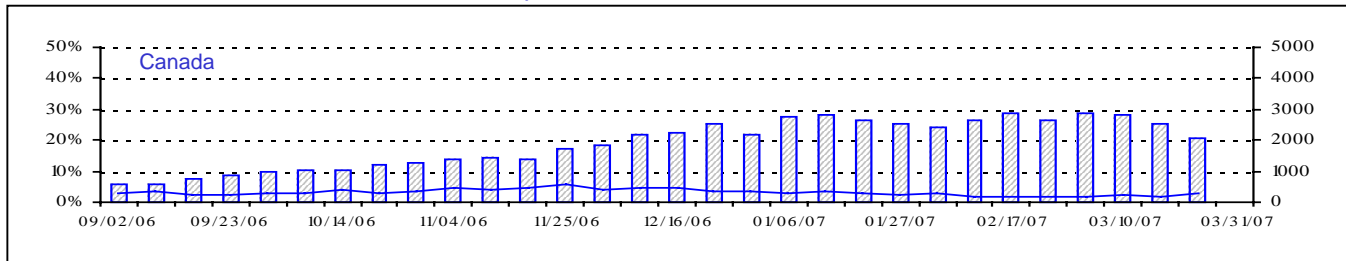


Total Tests Total

% Tests Positive/Positifs

▨ Total Tests — % Positive

Positive Parainfluenza Tests (%) in Canada by Region by Week of Report
 Détection du virus parainfluenza au Canada, tests positifs (%) par région
 par semaine de déclaration



Total Tests Total

▨ Total Tests — % Tests Positive

Positive Adenovirus Tests (%) in Canada by Region by Week of Report
 Détection des adénovirus au Canada, tests positifs (%) par région
 par semaine de déclaration

