

Table 1/Tableau 1  
Respiratory Virus Detections/Isolations for the week ending May 5 2007 (Reporting Week 200718)  
Détection/isolement de virus des voies respiratoires pour la semaine se terminant le 5 mai 2007 (Code hebdomadaire 200718)

Reporting Laboratory Laboratoire rapporteur	Flu/Grippe Test	Flu/Grippe A Pos.	Flu/Grippe B Pos.	R.S.V. Test	R.S.V. Pos.	PIV Test	PIV 1 Pos.	PIV 2 Pos.	PIV 3 Pos.	PIV 4 Pos.	Other/Autre PIV Pos.	Adeno Test	Adeno Pos.
Newfoundland./Terre-Neuve	15	0	0	9	1	5	0	0	0	0	0	8	0
Prince Edward Island./ Île-du-Prince-Édouard	0	0	0	2	2	0	0	0	0	0	0	0	0
Nova Scotia/Nouvelle-Écosse	8	0	0	8	0	8	0	0	3	0	0	8	0
New Brunswick/Nouveau-Brunswick	24	1	1	25	0	24	0	0	0	0	0	24	0
Atlantic/Atlantique	47	1	1	44	3	37	0	0	3	0	0	40	0
Région Nord-Est	81	0	6	19	4	0	0	0	0	0	0	0	0
Québec-Chaudière-Appalaches	152	2	4	136	2	104	0	0	2	0	0	104	3
Centre-du-Québec	137	4	17	20	0	7	0	0	1	0	0	7	0
Montréal-Laval	245	1	9	221	8	169	2	0	12	0	0	190	2
Ouest du Québec	24	3	0	6	0	0	0	0	0	0	0	0	0
Montérégie	29	2	0	11	6	0	0	0	0	0	0	0	0
Province of/de Québec	668	12	36	413	20	280	2	0	15	0	0	301	5
Ottawa P.H.L.	-	-	-	-	-	-	-	-	-	-	-	-	-
CHEO/HEEO - Ottawa	-	-	-	-	-	-	-	-	-	-	-	-	-
Kingston	10	0	0	10	0	10	0	0	3	0	0	10	0
Toronto Medical Laboratory	-	-	-	-	-	-	-	-	-	-	-	-	-
C.P.H.L. - Toronto	146	6	4	156	5	133	0	0	17	0	0	133	2
Sick Kids/Hospital - Toronto	75	0	1	75	0	75	0	0	2	3	0	75	2
Sunnybrook & Women's College HSC	31	0	0	31	0	31	0	0	7	0	0	31	0
Sault Ste. Marie	1	0	0	1	0	1	0	0	0	0	0	1	0
Timmins	2	0	0	2	0	2	0	0	0	0	0	2	0
St. Joseph's - London	10	0	0	10	0	10	0	0	2	0	0	10	0
London P.H.L.	50	0	0	50	0	50	0	0	4	0	0	50	0
Orillia P.H.L.	-	-	-	-	-	-	-	-	-	-	-	-	-
Windsor	6	1	0	6	0	6	0	0	0	0	0	6	0
Thunder Bay	4	0	0	4	0	4	0	0	0	0	0	4	0
Sudbury P.H.L.	4	0	0	4	0	4	0	0	0	0	0	4	0
Hamilton P.H.L.	6	0	0	7	0	6	0	0	1	0	0	6	0
Peterborough P.H.L.	24	0	1	24	0	24	0	0	2	0	0	24	0
Province of/de l'Ontario	369	7	6	380	5	356	0	0	38	3	0	356	4
Manitoba	23	0	0	24	0	23	0	0	3	0	0	23	1
Regina	84	0	0	84	3	84	0	0	5	0	0	84	0
Saskatoon	23	0	1	18	3	23	0	0	0	0	0	23	1
Province of/de la Saskatchewan	107	0	1	102	6	107	0	0	5	0	0	107	1
Calgary	164	2	3	82	1	82	0	0	0	0	1	75	0
Edmonton	247	0	5	247	13	247	0	0	0	0	6	121	12
Province of/de l'Alberta	411	2	8	329	14	329	0	0	0	0	7	196	12
Prairies	541	2	9	455	20	459	0	0	8	0	7	326	14
British Columbia/Colombie-Britannique	91	9	2	91	0	91	0	0	1	0	0	91	1
CANADA	1716	31	54	1383	48	1223	2	0	65	3	7	1114	24

Also available at: <http://www.phac-aspc.gc.ca/bid-bmi/dsd-dsm/rvdi-divr/index-html>

Aussi disponible sur le site: [http://www.phac-aspc.gc.ca/bid-bmi/dsd-dsm/rvdi-divr/index\\_f.html](http://www.phac-aspc.gc.ca/bid-bmi/dsd-dsm/rvdi-divr/index_f.html)

Table 2/Tableau 2

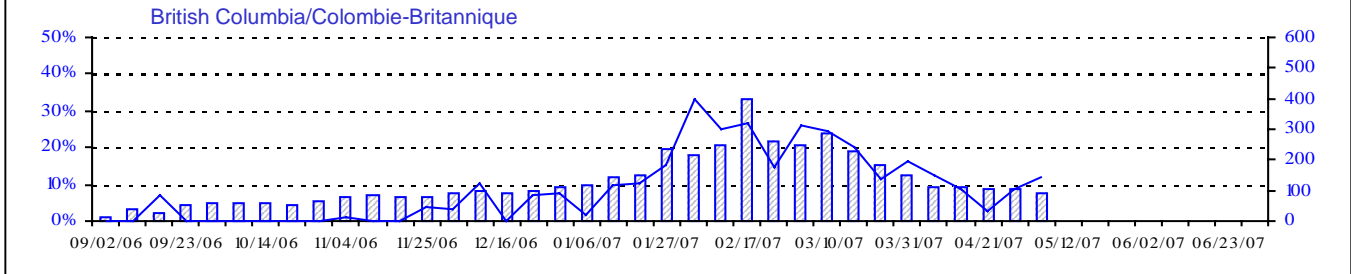
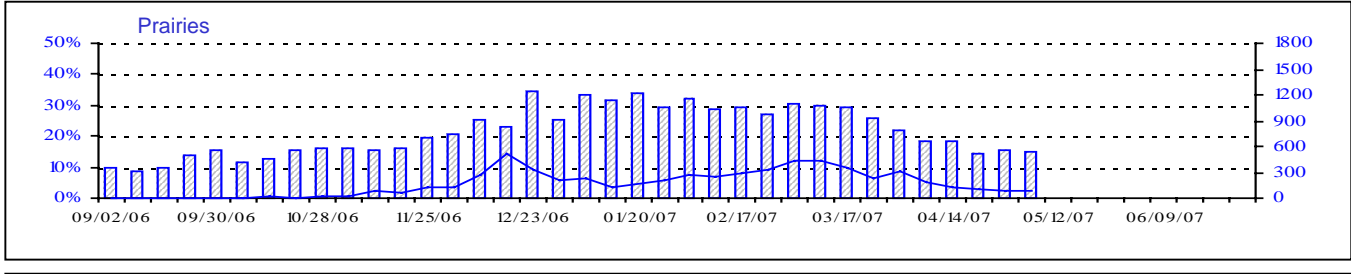
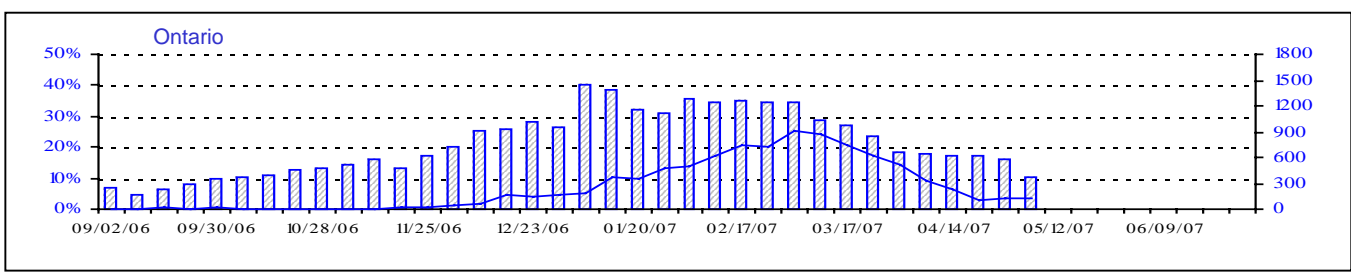
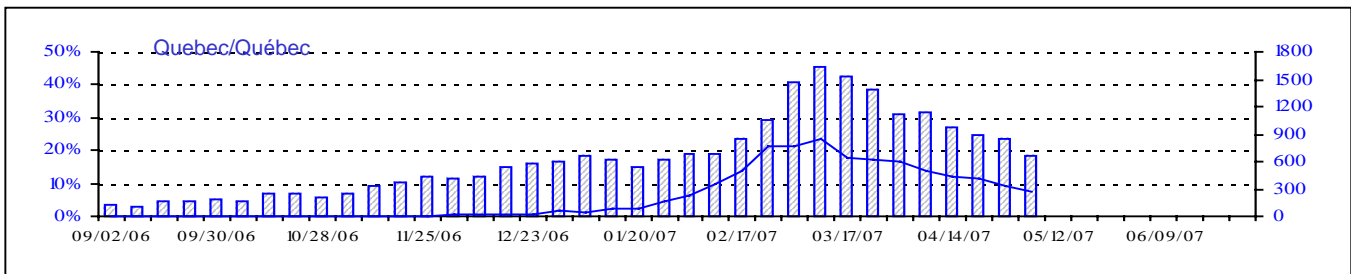
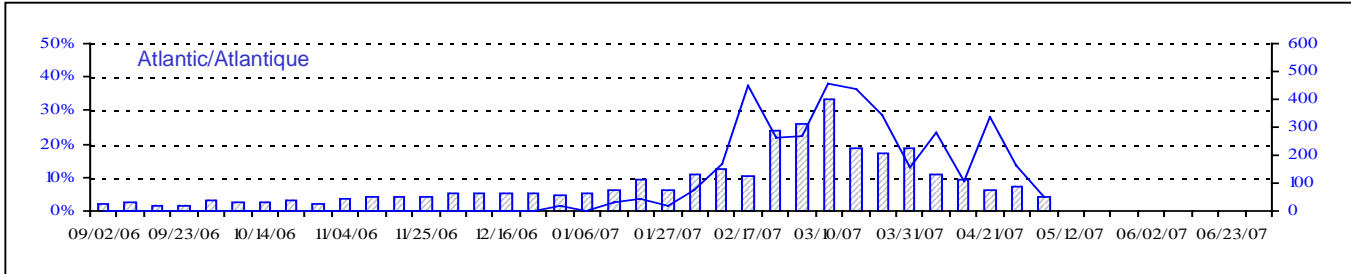
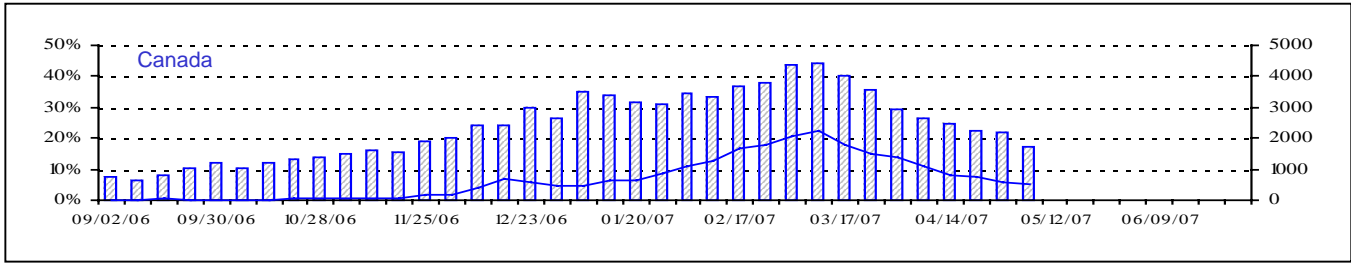
Respiratory Virus Detections/Isolations for the period August 27, 2006 - May 5, 2007  
 Détection/isolément de virus des voies respiratoires pour la période du 27 août 2006 - 5 mai 2007  
 (Reporting Weeks 200635 -200718/Code hebdomadaire 200635-200718)

Reporting Laboratory Laboratoire rapporteur	Flu/Grippe Test	Flu/Grippe A Pos.	Flu/Grippe B Pos.	R.S.V. Test	R.S.V. Pos.	PIV Test	PIV 1 Pos.	PIV 2 Pos.	PIV 3 Pos.	PIV 4 Pos.	Other/Autre PIV Pos.	Adeno Test	Adeno Pos.
Newfoundland./Terre-Neuve	1077	164	0	313	69	101	1	1	6	0	0	85	0
Prince Edward Island./ Île-du-Prince-Édouard	112	29	0	260	63	112	0	0	9	0	0	112	1
Nova Scotia/Nouvelle-Écosse	901	124	0	901	55	621	0	3	23	0	0	621	10
New Brunswick/Nouveau-Brunswick	1525	288	12	991	18	928	0	0	6	0	0	931	10
Atlantic/Atlantique	3615	605	12	2465	205	1762	1	4	44	0	0	1749	21
Région Nord-Est	2264	243	130	719	224	0	0	0	0	0	0	0	0
Québec-Chaudière-Appalaches	3667	266	134	3853	589	2131	0	1	34	9	0	2902	92
Centre-du-Québec	4128	317	199	1662	491	337	0	0	3	0	0	349	4
Montréal-Laval	10168	525	202	10442	1680	7917	18	4	124	27	0	8693	204
Ouest du Québec	1234	155	61	782	305	0	0	0	0	0	0	0	0
Montréal	1418	167	38	820	348	0	0	0	0	0	0	0	0
Province of/de Québec	22879	1673	764	18278	3637	10385	18	5	161	36	0	11944	300
Ottawa P.H.L.	144	9	0	67	2	0	0	0	0	0	0	0	0
CHEO/HEEO - Ottawa	2526	239	10	2526	671	2526	0	0	47	0	0	2526	32
Kingston	1360	147	3	1360	92	1360	2	5	43	0	0	1360	6
Toronto Medical Laboratory	1006	22	1	1006	65	1006	0	1	11	0	0	1006	1
C.P.H.L. - Toronto	9136	791	16	9778	728	8601	26	5	213	22	0	8601	94
Sick Kids' Hospital - Toronto	3505	153	6	3505	486	3505	9	1	74	35	0	3505	62
Sunnybrook & Women's College HSC	565	23	0	565	9	565	0	0	9	0	0	565	0
Sault Ste. Marie	246	26	0	246	57	246	0	1	7	0	0	246	1
Timmins	335	54	1	335	60	335	0	0	8	1	0	335	4
St.Joseph's-London	834	42	5	834	150	834	0	1	16	0	4	834	2
London P.H.L.	3041	455	1	3041	357	3041	2	0	76	2	0	3041	16
Orillia P.H.L.	1333	210	0	1333	156	1333	2	1	39	0	7	1333	23
Windsor	468	63	1	475	21	323	0	0	5	1	0	323	3
Thunder Bay	408	58	0	397	42	408	0	0	13	4	0	406	3
Sudbury P.H.L.	343	42	0	343	20	343	0	0	15	0	0	356	6
Hamilton P.H.L.	420	36	0	517	63	420	0	2	6	0	0	420	0
Peterborough P.H.L.	1614	266	2	1614	167	1614	4	1	39	0	0	1614	6
Province of/de l'Ontario	27284	2636	46	27942	3146	26460	45	18	621	65	11	26471	259
Manitoba	1933	76	0	2241	211	1780	0	2	70	0	0	1780	18
Regina	4115	258	2	4115	410	4115	0	24	124	0	0	4115	43
Saskatoon	963	52	4	833	236	965	0	0	0	0	50	965	12
Province of/de la Saskatchewan	5078	310	6	4948	646	5080	0	24	124	0	50	5080	55
Calgary	8899	393	19	4467	253	4467	0	0	0	0	176	3575	73
Edmonton	11972	764	21	12177	2080	11610	0	0	0	0	597	5114	323
Province of/de l'Alberta	20871	1157	40	16644	2333	16077	0	0	0	0	773	8689	396
Prairies	27882	1543	46	23833	3190	22937	0	26	194	0	823	15549	469
British Columbia/Colombie-Britannique	4609	611	40	4609	103	4609	2	14	36	4	0	4609	27
CANADA	86269	7068	908	77127	10281	66153	66	67	1056	105	834	60322	1076

Also available at: <http://www.phac-aspc.gc.ca/bid-bmi/dsd-dsm/rvdi-divr/index.html>

Aussi disponible sur le site: [http://www.phac-aspc.gc.ca/bid-bmi/dsd-dsm/rvdi-divr/index\\_f.html](http://www.phac-aspc.gc.ca/bid-bmi/dsd-dsm/rvdi-divr/index_f.html)

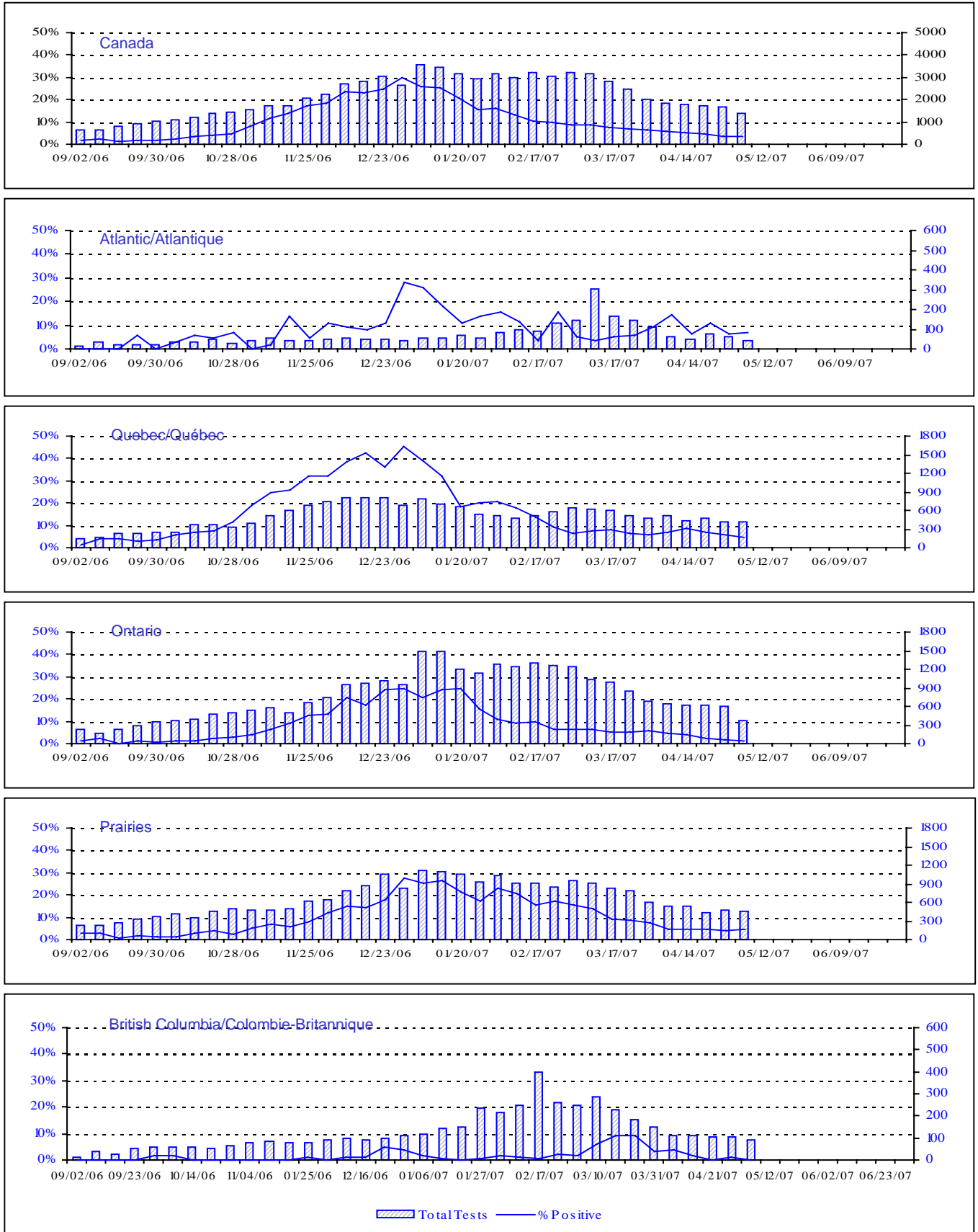
Positive Influenza Tests (%) in Canada by Region by Week of Report  
 Détection du virus grippal au Canada, tests positifs (%) par région  
 par semaine de déclaration



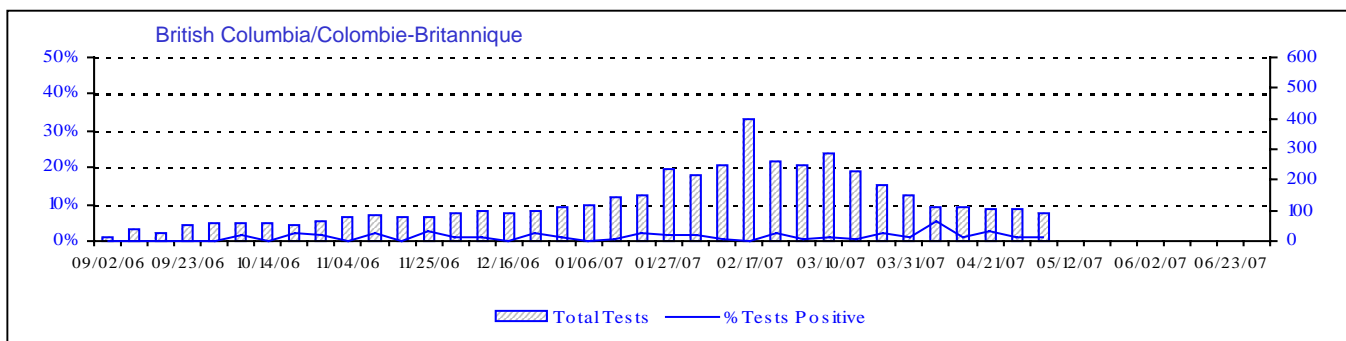
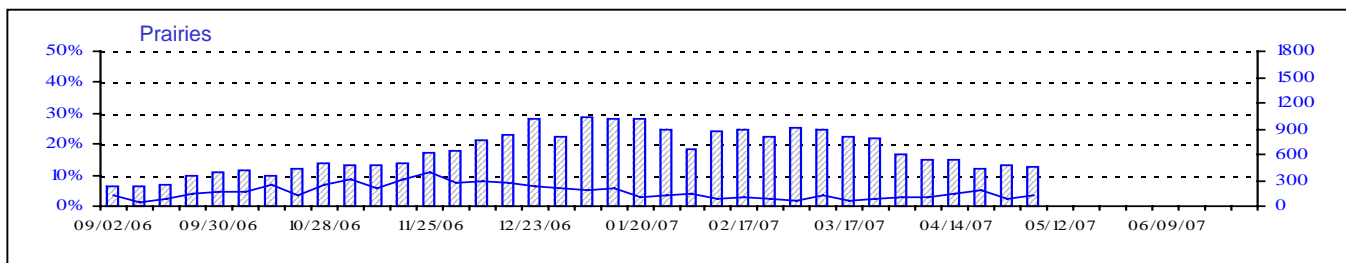
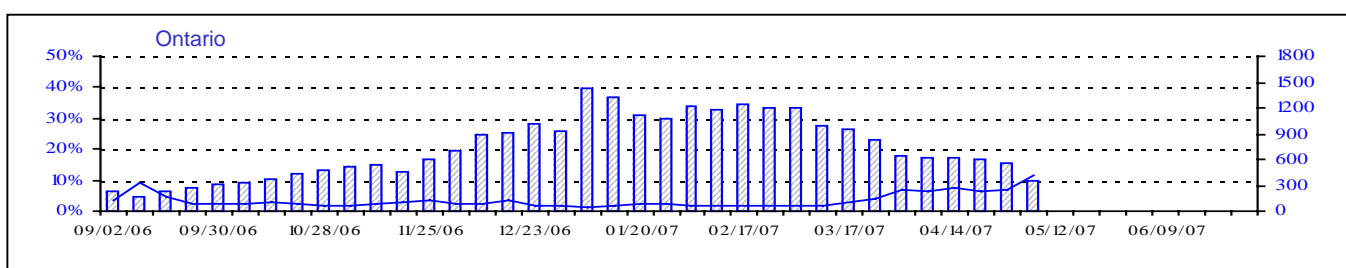
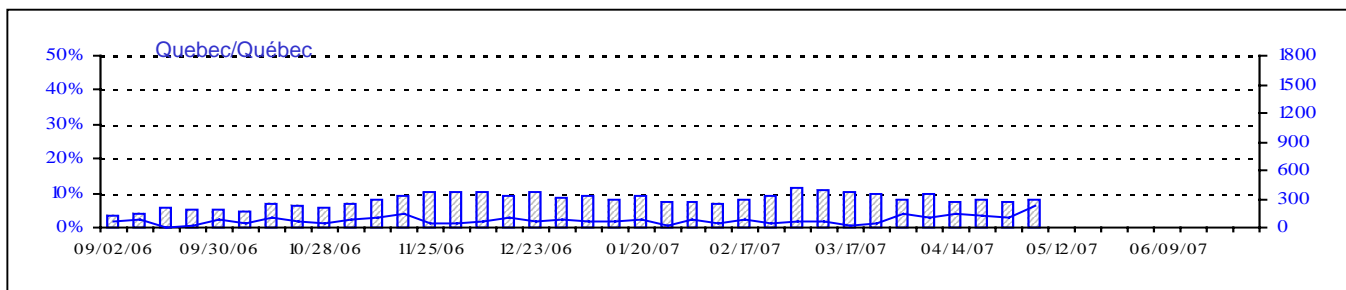
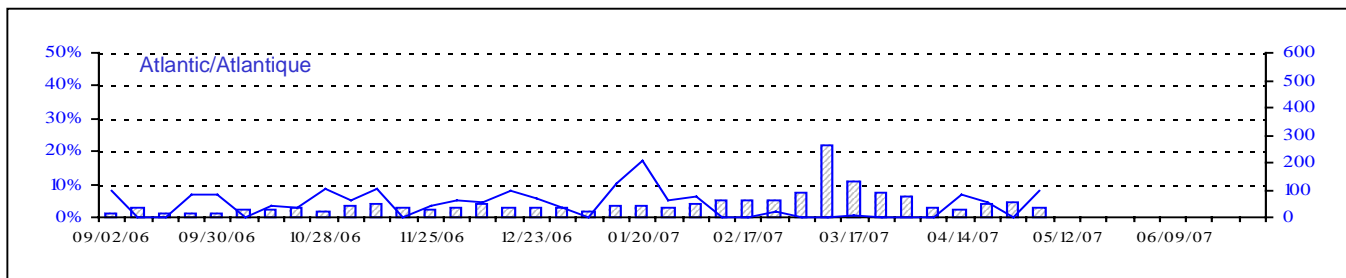
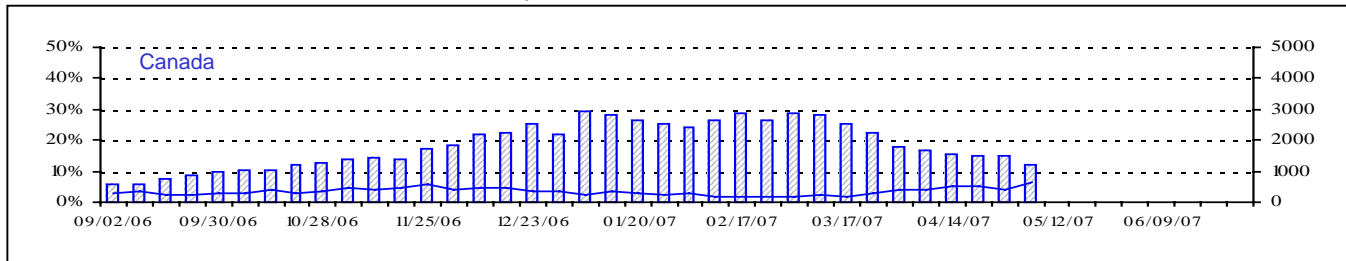
▨ Total Tests — % Tests Positive

Total Tests Total

Positive RSV Tests (%) in Canada by Region by Week of Report  
 Détection du virus respiratoire syncytial au Canada, tests positifs (%) par région  
 par semaine de déclaration



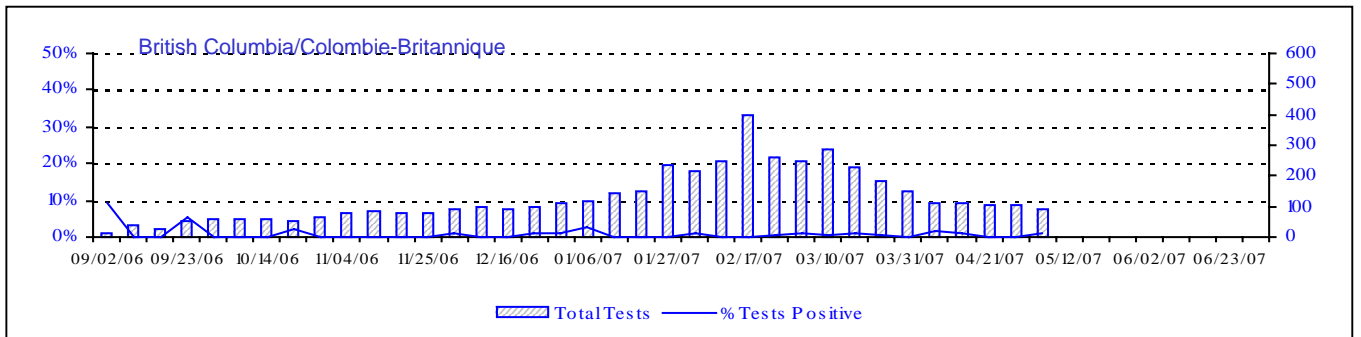
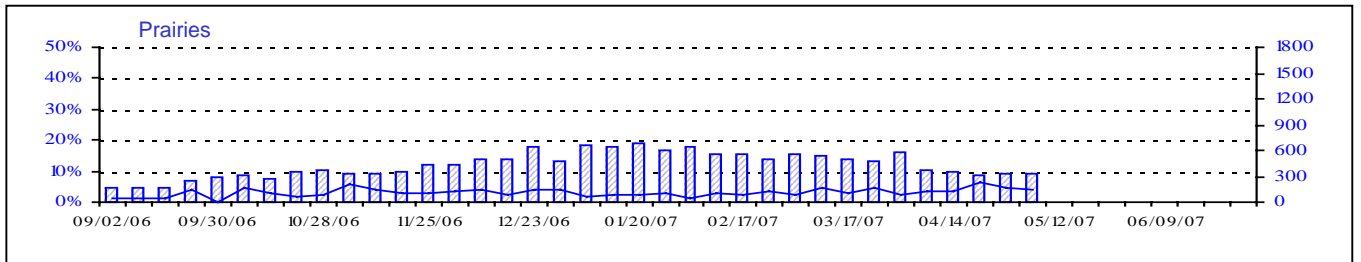
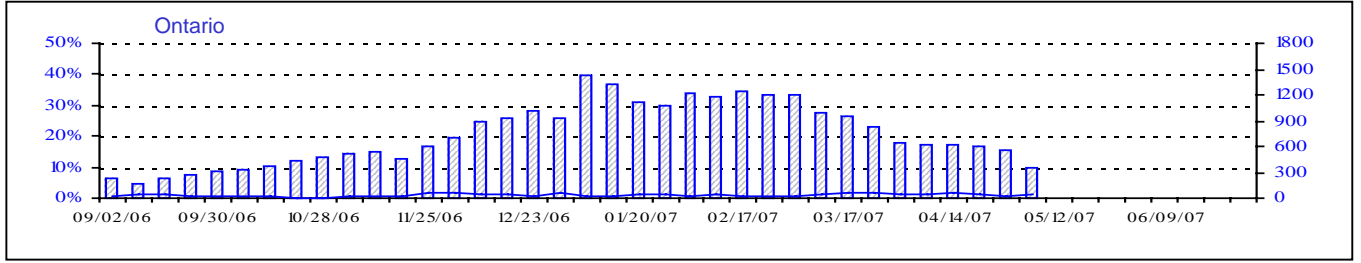
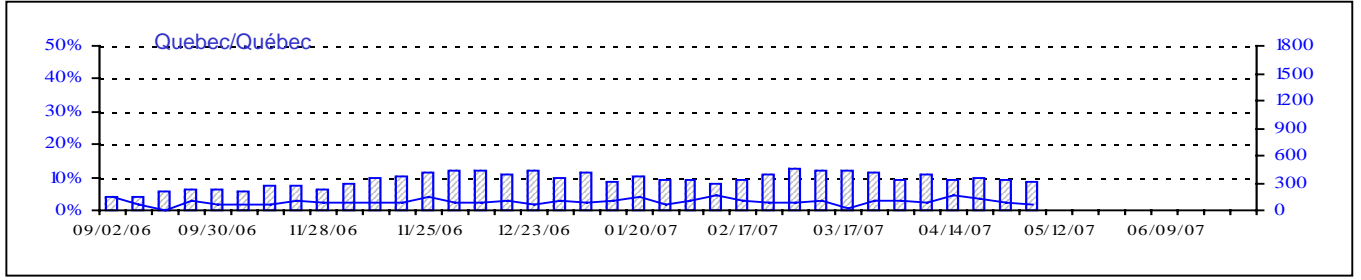
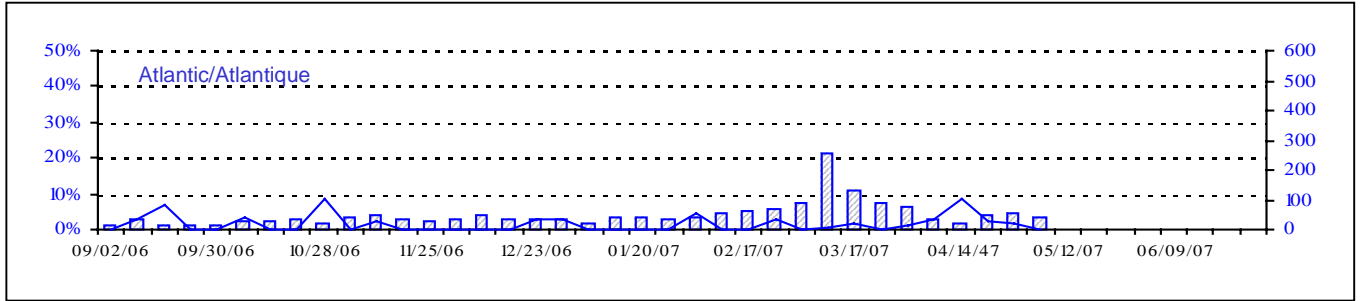
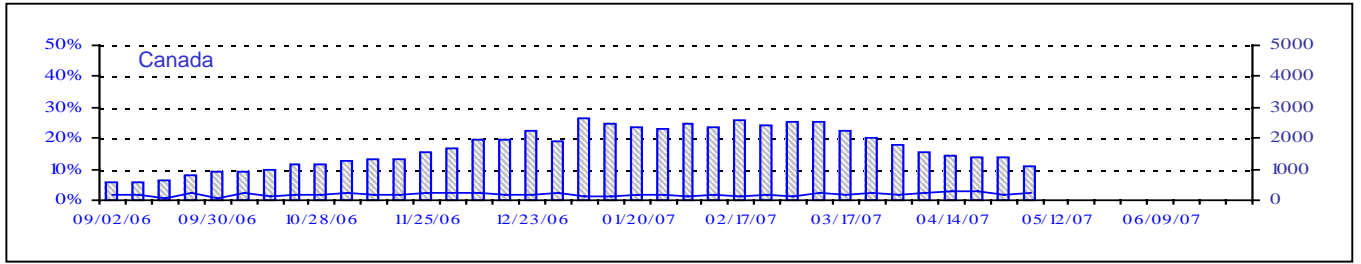
Positive Parainfluenza Tests (%) in Canada by Region by Week of Report  
 Détection du virus parainfluenza au Canada, tests positifs (%) par région  
 par semaine de déclaration



Total Tests Total

▨ Total Tests — % Tests Positive

Positive Adenovirus Tests (%) in Canada by Region by Week of Report  
 Détection des adénovirus au Canada, tests positifs (%) par région  
 par semaine de déclaration



Total Tests Total

▨ TotalTests — % Tests Positive