

Table 1/Tableau 1

Respiratory Virus Detections/Isolations for the week ending August 4, 2007 (Reporting Week 200731)  
 Détection/isolement de virus des voies respiratoires pour la semaine se terminant le 4 août 2007 (Code hebdomadaire 200731)

Reporting Laboratory Laboratoire rapporteur	Flu/Grippe Test	Flu/Grippe A Pos.	Flu/Grippe B Pos.	R.S.V. Test	R.S.V. Pos.	PIV Test	PIV 1 Pos.	PIV 2 Pos.	PIV 3 Pos.	PIV 4 Pos.	Other/Autre PIV Pos.	Adeno Test	Adeno Pos.
Newfoundland./Terre-Neuve	1	0	0	4	0	1	0	0	0	0	0	1	0
Prince Edward Island./ Île-du-Prince-Édouard	2	0	0	2	0	2	0	0	0	0	0	2	2
Nova Scotia/Nouvelle-Écosse	-	-	-	-	-	-	-	-	-	-	-	-	-
New Brunswick/Nouveau-Brunswick	7	0	0	5	0	3	0	0	0	0	0	10	0
Atlantic/Atlantique	10	0	0	11	0	6	0	0	0	0	0	13	2
Région Nord-Est	2	0	0	5	1	0	0	0	0	0	0	0	0
Québec-Chaudière-Appalaches	30	0	0	40	0	30	2	0	0	0	0	41	0
Centre-du-Québec	2	0	0	1	0	1	0	0	0	0	0	1	0
Montréal-Laval	73	0	0	98	0	96	4	0	0	0	0	113	0
Ouest du Québec	0	0	0	3	0	0	0	0	0	0	0	0	0
Montérégie	2	0	0	1	0	0	0	0	0	0	0	0	0
Province of/de Québec	109	0	0	148	1	127	6	0	0	0	0	155	0
Ottawa P.H.L.	-	-	-	-	-	-	-	-	-	-	-	-	-
CHEO/HEEO - Ottawa	-	-	-	-	-	-	-	-	-	-	-	-	-
Kingston	-	-	-	-	-	-	-	-	-	-	-	-	-
Toronto Medical Laboratory	-	-	-	-	-	-	-	-	-	-	-	-	-
C.P.H.L. - Toronto	62	0	0	68	0	62	2	0	5	0	0	62	1
Sick Kids/Hospital - Toronto	47	0	0	47	0	47	2	0	1	0	0	47	0
Sunnybrook & Women's College HSC	17	0	0	17	0	17	1	0	3	0	0	17	0
Sault Ste. Marie	1	0	0	1	0	1	0	0	0	0	0	1	0
Timmins	0	0	0	0	0	0	0	0	0	0	0	0	0
St. Joseph's - London	15	0	0	15	0	15	0	0	0	0	0	15	0
London P.H.L.	23	0	0	23	0	23	0	0	0	0	0	23	0
Orillia P.H.L.	13	0	0	13	0	13	0	0	0	0	0	13	1
Windsor	-	-	-	-	-	-	-	-	-	-	-	-	-
Thunder Bay	2	0	0	2	0	2	0	0	0	0	0	2	0
Sudbury P.H.L.	7	0	0	7	0	7	0	0	0	0	0	7	0
Hamilton P.H.L.	4	0	0	4	0	4	0	0	0	0	0	4	0
Peterborough P.H.L.	7	0	0	7	0	7	0	0	1	0	0	7	1
Province of/de l'Ontario	198	0	0	204	0	198	5	0	10	0	0	198	3
Manitoba	35	0	0	36	0	35	0	0	0	0	0	35	1
Regina	0	0	0	0	0	0	0	0	0	0	0	0	0
Saskatoon	9	0	0	9	0	9	0	0	0	0	0	9	0
Province of/de la Saskatchewan	9	0	0	9	0	9	0	0	0	0	0	9	0
Calgary	155	0	0	67	0	89	0	0	0	0	0	74	1
Edmonton	-	-	-	-	-	-	-	-	-	-	-	-	-
Province of/de l'Alberta	155	0	0	67	0	89	0	0	0	0	0	74	1
Prairies	199	0	0	112	0	133	0	0	0	0	0	118	2
British Columbia/Colombie-Britannique	2	0	0	2	0	2	0	0	0	0	0	2	0
CANADA	518	0	0	477	1	466	11	0	10	0	0	486	7

Also available at: <http://www.phac-aspc.gc.ca/bid-bmi/dsd-dsm/rvdi-divr/index-html>

Aussi disponible sur le site: [http://www.phac-aspc.gc.ca/bid-bmi/dsd-dsm/rvdi-divr/index\\_f.html](http://www.phac-aspc.gc.ca/bid-bmi/dsd-dsm/rvdi-divr/index_f.html)

Table 2/Tableau 2

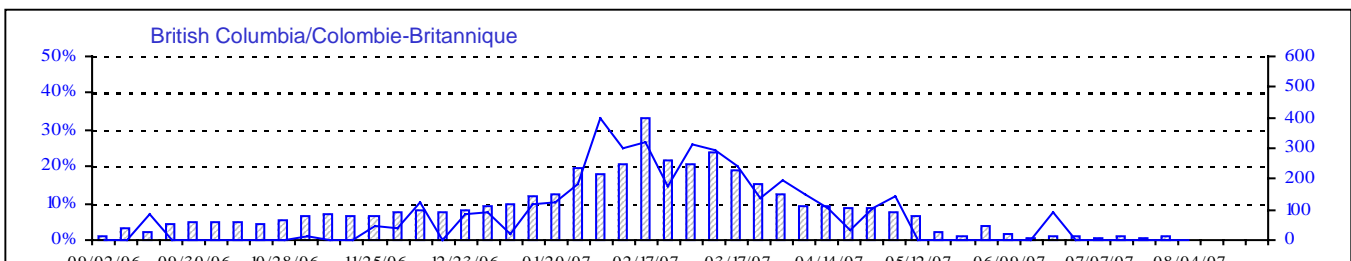
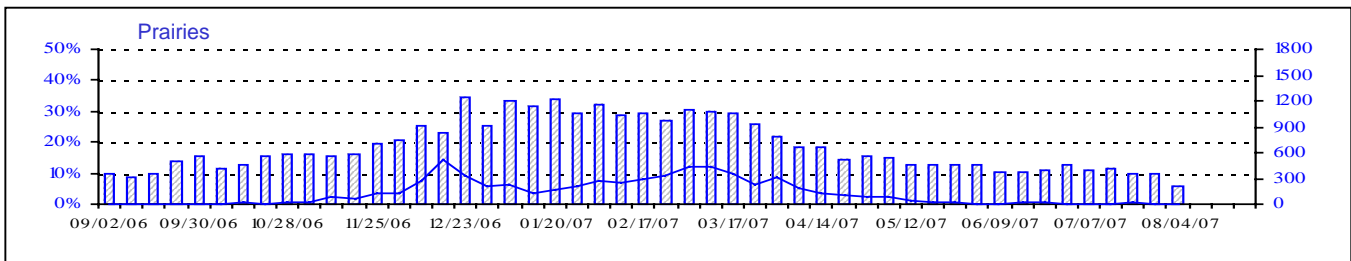
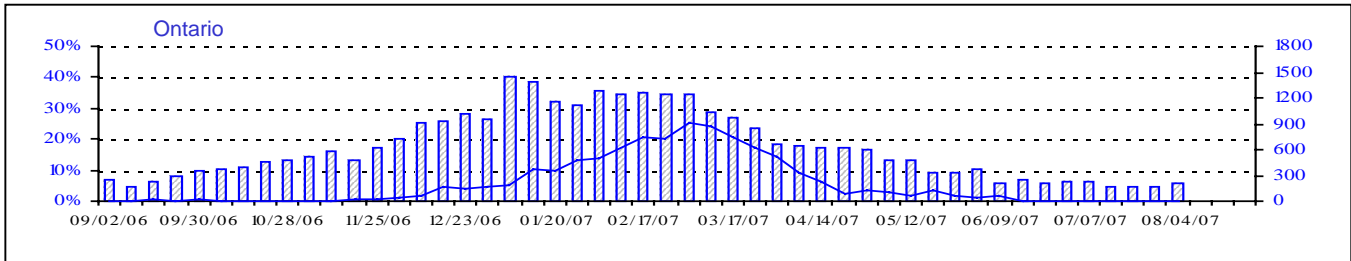
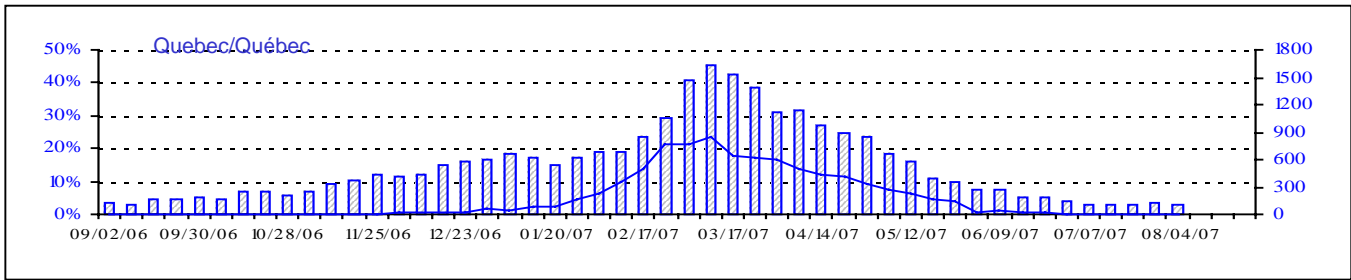
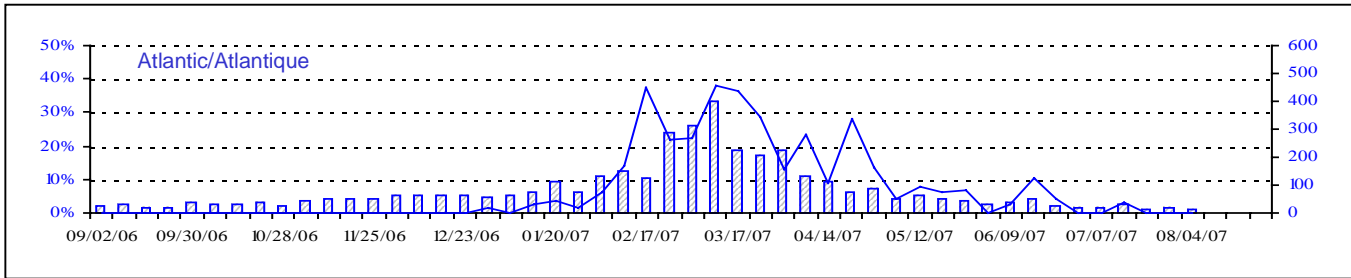
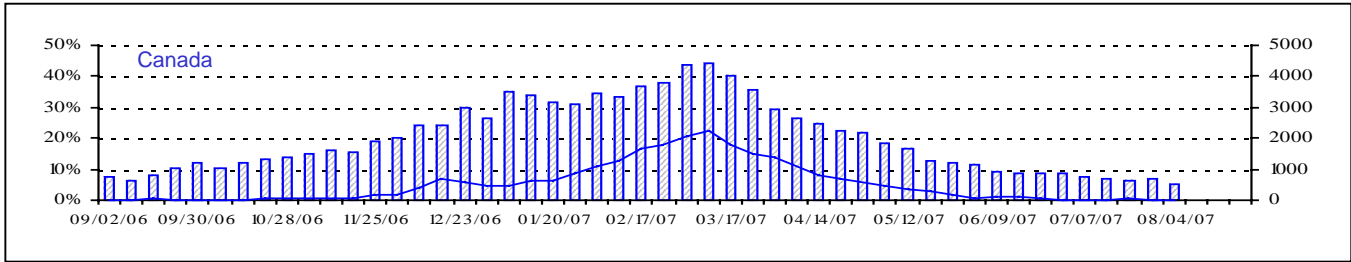
Respiratory Virus Detections/Isolations for the period August 27, 2006 - August 4, 2007  
 Détection/isolement de virus des voies respiratoires pour la période du 27 août 2006 - 4 août 2007  
 (Reporting Weeks 200635 -200731/Code hebdomadaire 200635-200731)

Reporting Laboratory Laboratoire rapporteur	Flu/Grippe Test	Flu/Grippe A Pos.	Flu/Grippe B Pos.	R.S.V. Test	R.S.V. Pos.	PIV Test	PIV 1 Pos.	PIV 2 Pos.	PIV 3 Pos.	PIV 4 Pos.	Other/Autre PIV Pos.	Adeno Test	Adeno Pos.
Newfoundland./Terre-Neuve	1235	168	1	392	71	148	2	1	10	0	0	137	1
Prince Edward Island./ Île-du-Prince-Édouard	134	29	0	288	64	134	0	0	13	0	0	134	4
Nova Scotia/Nouvelle-Écosse	980	124	1	980	56	700	1	3	26	0	0	700	17
New Brunswick/Nouveau-Brunswick	1669	291	22	1117	20	1026	0	0	7	0	0	1034	11
Atlantic/Atlantique	4018	612	24	2777	211	2008	3	4	56	0	0	2005	33
Région Nord-Est	2405	243	137	771	235	0	0	0	0	0	0	0	0
Québec-Chaudière-Appalaches	4201	267	141	4467	589	2579	6	1	44	10	0	3507	112
Centre-du-Québec	4463	318	220	1797	491	397	0	0	3	0	0	412	6
Montréal-Laval	11987	526	234	12433	1721	9680	42	4	183	28	0	10658	241
Ouest du Québec	1284	155	64	817	306	0	0	0	0	0	0	0	0
Montréal	1474	169	39	854	353	0	0	0	0	0	0	0	0
Province of/de Québec	25814	1678	835	21139	3695	12656	48	5	230	38	0	14577	359
Ottawa P.H.L.	170	9	0	85	2	0	0	0	0	0	0	0	0
CHEO/HEEO - Ottawa	2756	240	15	2756	675	2756	0	0	51	0	0	2756	34
Kingston	1438	147	4	1438	92	1438	2	5	49	0	0	1438	7
Toronto Medical Laboratory	1294	22	1	1294	67	1294	0	1	12	0	0	1279	1
C.P.H.L. - Toronto	10202	795	19	10879	733	9605	42	5	282	23	0	9605	112
Sick Kids' Hospital - Toronto	4304	157	7	4304	490	4304	19	3	108	58	0	4304	80
Sunnybrook & Women's College HSC	694	23	1	694	9	694	1	0	18	0	0	694	0
Sault Ste. Marie	261	27	0	261	58	261	0	1	8	0	0	261	1
Timmins	369	56	1	369	60	369	0	0	15	1	0	369	6
St.Joseph's-London	1003	42	5	1003	151	1003	0	1	21	0	11	1003	4
London P.H.L.	3291	457	1	3291	362	3291	3	0	83	2	0	3291	17
Orillia P.H.L.	1498	211	0	1498	156	1498	2	1	48	0	7	1498	36
Windsor	534	67	6	541	21	389	0	0	6	1	0	389	5
Thunder Bay	446	58	0	429	42	446	0	0	13	4	0	444	3
Sudbury P.H.L.	395	42	0	395	20	395	0	0	18	0	0	412	6
Hamilton P.H.L.	439	36	0	544	63	439	1	2	7	0	0	439	0
Peterborough P.H.L.	1743	267	2	1743	169	1743	5	1	52	0	0	1743	11
Province of/de l'Ontario	30837	2656	62	31524	3170	29925	75	20	791	89	18	29925	323
Manitoba	2368	76	0	2686	211	2207	0	2	75	0	0	2207	34
Regina	4686	259	3	4686	413	4686	0	25	153	0	0	4686	61
Saskatoon	1123	52	4	972	238	1125	0	0	0	0	59	1125	13
Province of/de la Saskatchewan	5809	311	7	5658	651	5811	0	25	153	0	59	5811	74
Calgary	10785	397	21	5449	256	5544	0	0	0	0	225	4494	97
Edmonton	14044	770	28	14252	2094	13726	0	0	0	0	668	6244	409
Province of/de l'Alberta	24829	1167	49	19701	2350	19270	0	0	0	0	893	10738	506
Prairies	33006	1554	56	28045	3212	27288	0	27	228	0	952	18756	614
British Columbia/Colombie-Britannique	4876	612	40	4876	104	4876	3	14	41	4	0	4876	31
CANADA	98551	7112	1017	88361	10392	76753	129	70	1346	131	970	70139	1360

Also available at: <http://www.phac-aspc.gc.ca/bid-bmi/dsd-dsm/rvdi-divr/index.html>

Aussi disponible sur le site: [http://www.phac-aspc.gc.ca/bid-bmi/dsd-dsm/rvdi-divr/index\\_f.html](http://www.phac-aspc.gc.ca/bid-bmi/dsd-dsm/rvdi-divr/index_f.html)

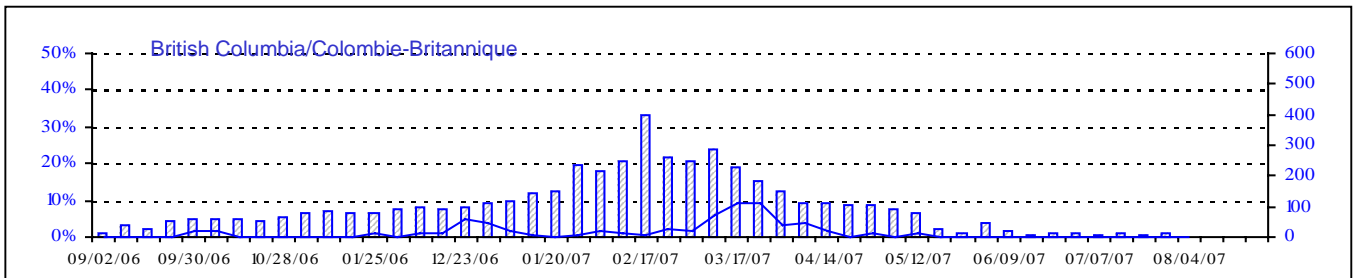
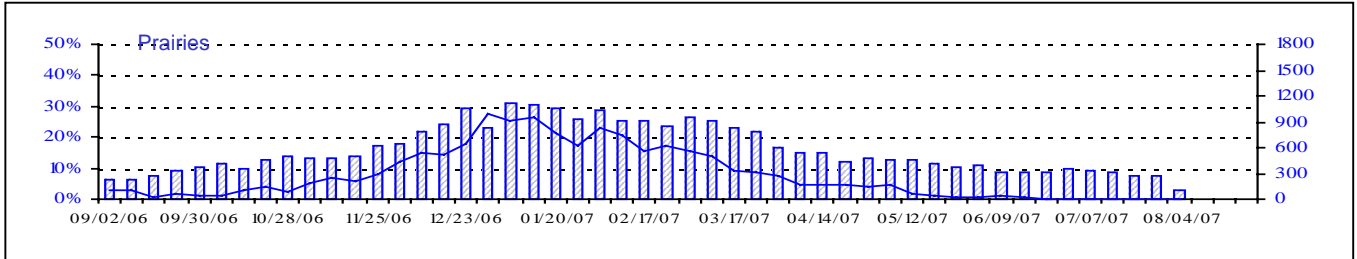
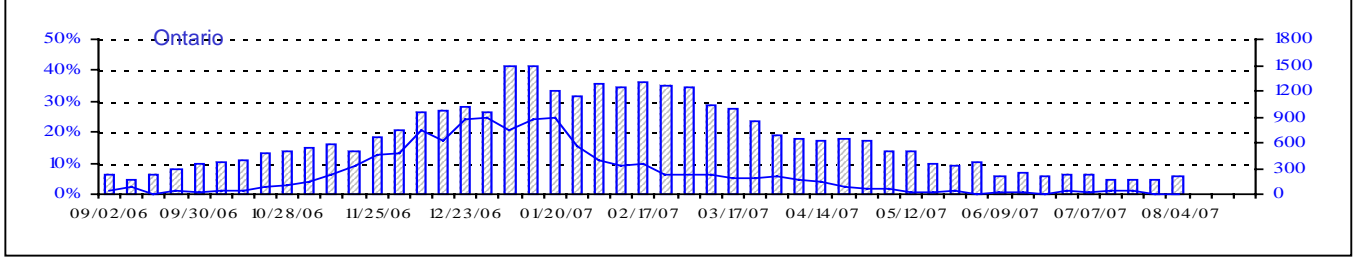
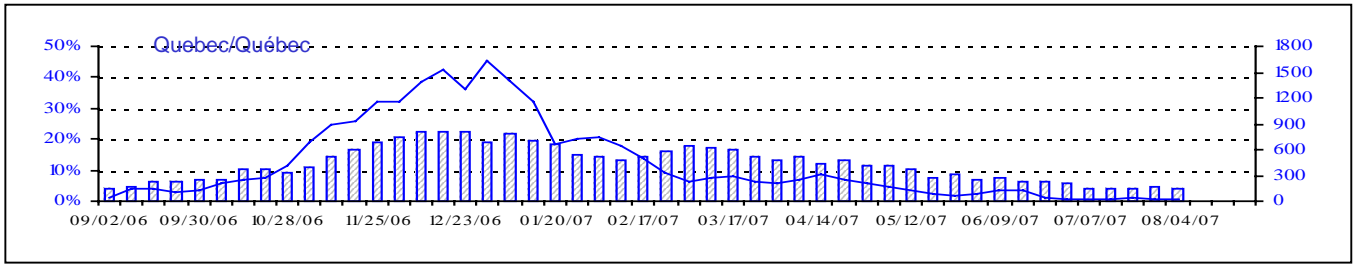
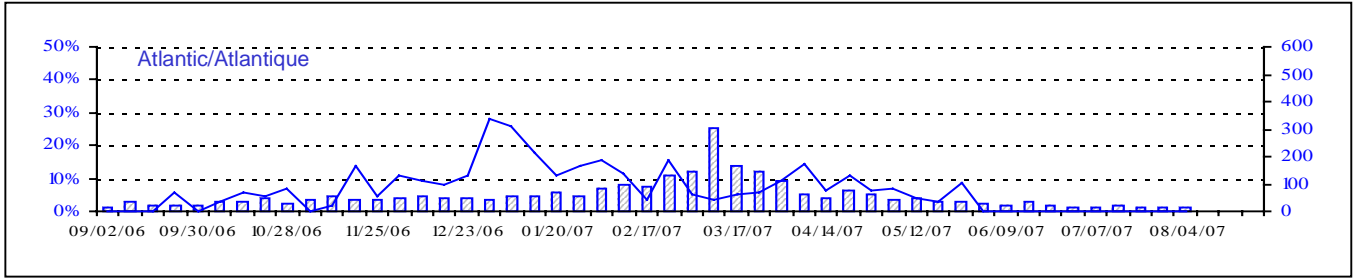
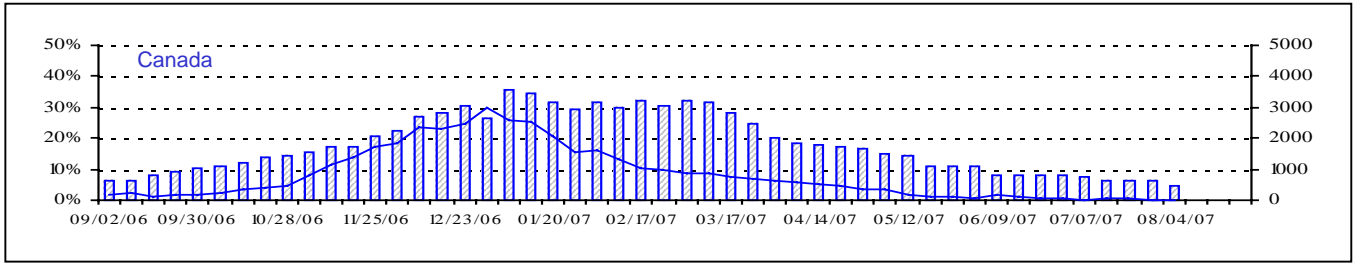
Positive Influenza Tests (%) in Canada by Region by Week of Report  
 Détection du virus grippal au Canada, tests positifs (%) par région  
 par semaine de déclaration



▨ Total Tests — % Tests Positive

Total Tests Total

Positive RSV Tests (%) in Canada by Region by Week of Report  
 Détection du virus respiratoire syncytial au Canada, tests positifs (%) par région  
 par semaine de déclaration

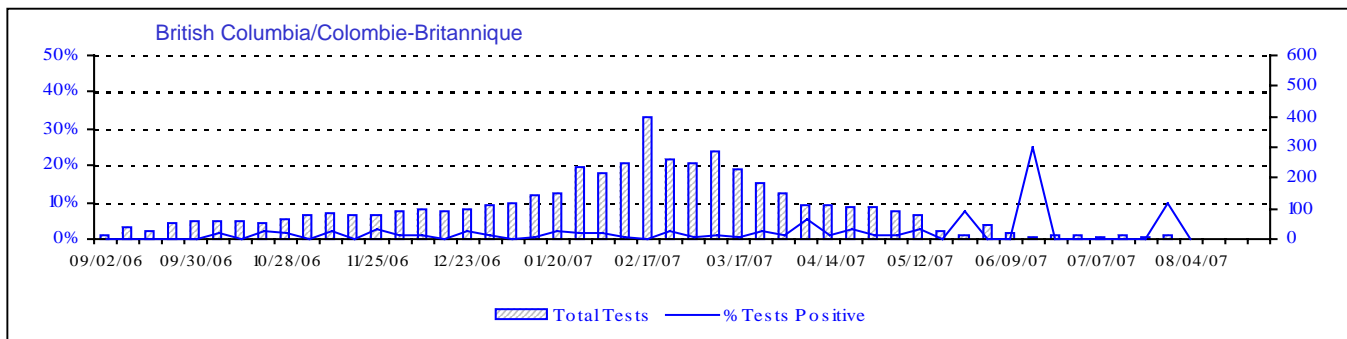
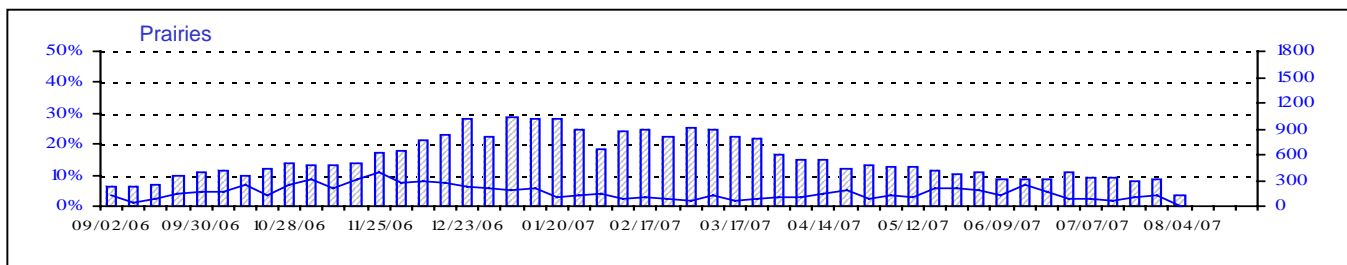
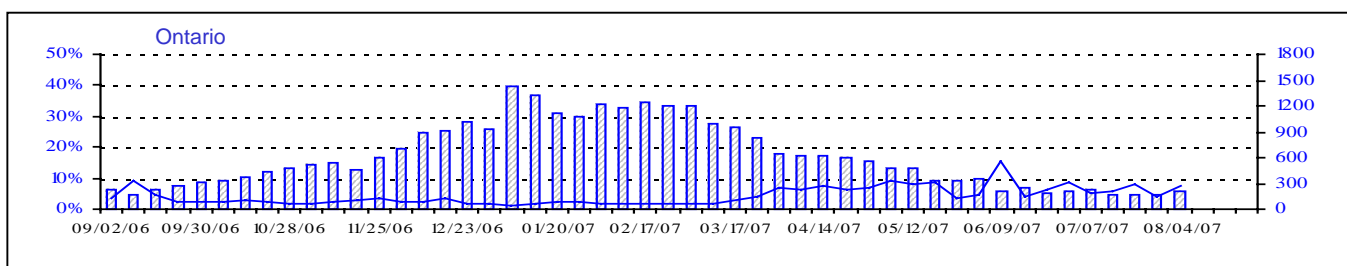
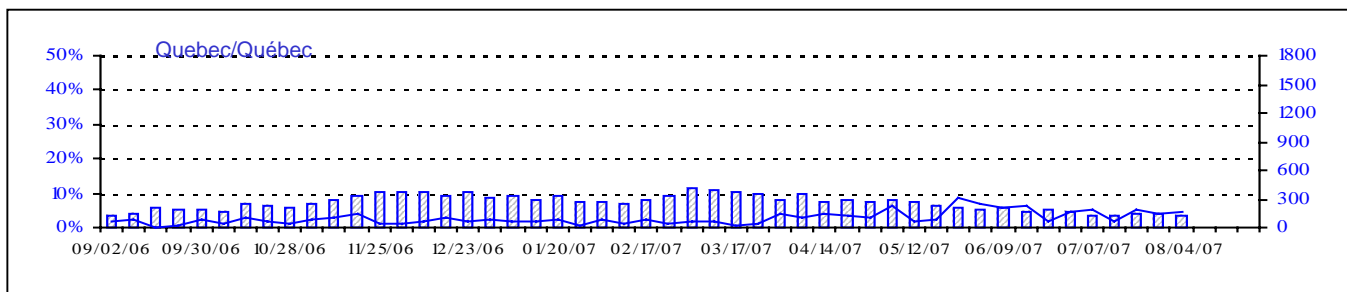
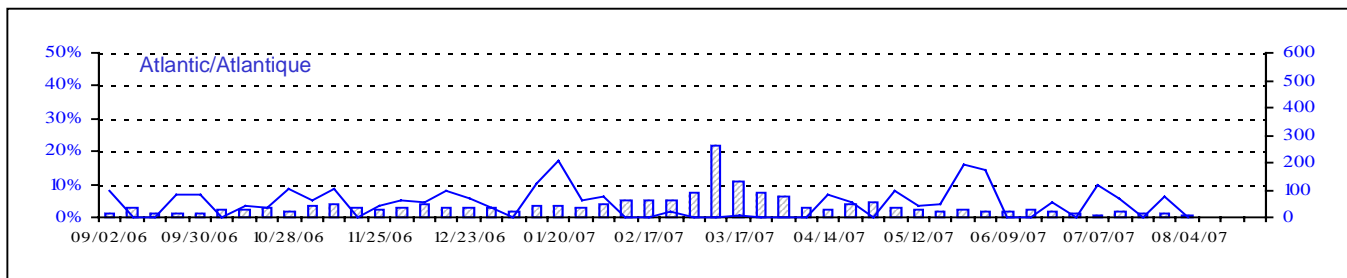
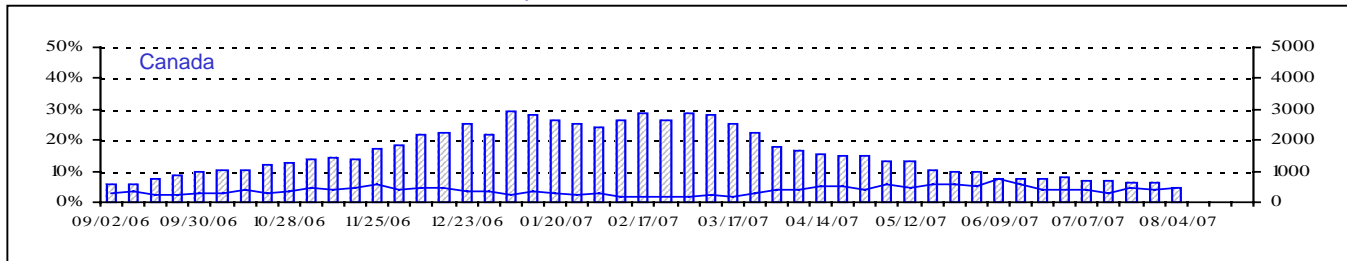


▨ Total Tests — % Positive

Total Tests Total

% Tests Positive/Positifs

Positive Parainfluenza Tests (%) in Canada by Region by Week of Report  
 Détection du virus parainfluenza au Canada, tests positifs (%) par région  
 par semaine de déclaration



Total Tests Total

▨ Total Tests — % Tests Positive

Positive Adenovirus Tests (%) in Canada by Region by Week of Report  
 Détection des adénovirus au Canada, tests positifs (%) par région  
 par semaine de déclaration

