

Table 1/Tableau 1
 Respiratory Virus Detections/Isolations for the week ending July 29, 2006 (Reporting Week 200630)
 Détection/isolement de virus des voies respiratoires pour la semaine se terminant le 29 juillet 2006 (Code hebdomadaire 200630)

Reporting Laboratory Laboratoire rapporteur	Flu/Grippe Test	Flu/Grippe A Pos.	Flu/Grippe B Pos.	R.S.V. Test	R.S.V. Pos.	PIV Test	PIV 1 Pos.	PIV 2 Pos.	PIV 3 Pos.	PIV 4 Pos.	Other/Autre PIV Pos.	Adeno Test	Adeno Pos.
Newfoundland./Terre-Neuve	3	0	0	1	0	1	0	0	0	0	0	1	0
Prince Edward Island./ Île-du-Prince-Édouard	0	0	0	0	0	0	0	0	0	0	0	0	0
Nova Scotia/Nouvelle-Écosse	-	-	-	-	-	-	-	-	-	-	-	-	-
New Brunswick/Nouveau-Brunswick	4	0	0	4	0	4	0	0	0	0	0	8	0
Atlantic/Atlantique	7	0	0	5	0	5	0	0	0	0	0	9	0
Région Nord-Est	2	0	0	2	0	0	0	0	0	0	0	0	0
Québec-Chaudière-Appalaches	26	0	0	35	0	26	0	0	2	0	0	33	0
Centre-du-Québec	2	0	0	4	0	2	0	0	0	0	0	2	0
Montréal-Laval	83	0	0	104	2	104	2	0	6	0	0	121	2
Ouest du Québec	0	0	0	2	0	0	0	0	0	0	0	0	0
Montérégie	1	0	0	1	0	0	0	0	0	0	0	0	0
Province of/de Québec	114	0	0	148	2	132	2	0	8	0	0	156	2
Ottawa P.H.L.	-	-	-	-	-	-	-	-	-	-	-	-	-
CHEO/HEEO - Ottawa	-	-	-	-	-	-	-	-	-	-	-	-	-
Kingston	1	0	0	1	0	1	0	0	1	0	0	1	0
Toronto Medical Laboratory	-	-	-	-	-	-	-	-	-	-	-	-	-
C.P.H.L. - Toronto	80	0	0	78	2	67	0	0	5	0	0	67	0
Sick Kids/Hospital - Toronto	46	0	0	46	1	46	0	0	5	0	0	46	0
Sunnybrook & Women's College HSC	6	0	0	6	0	6	0	0	0	0	0	6	0
Sault Ste. Marie	-	-	-	-	-	-	-	-	-	-	-	-	-
Timmins	8	0	0	8	0	8	0	0	0	0	0	8	0
St. Joseph's - London	9	0	0	9	0	9	0	0	0	0	0	9	0
London P.H.L.	10	0	0	10	0	10	0	0	0	0	0	10	0
Orillia P.H.L.	16	0	0	16	0	16	0	0	0	0	0	16	0
Windsor	3	0	0	3	0	3	0	0	0	0	0	3	0
Thunder Bay	0	0	0	1	0	0	0	0	0	0	0	0	0
Sudbury P.H.L.	0	0	0	0	0	0	0	0	1	0	0	1	0
Hamilton P.H.L.	8	0	0	8	0	8	0	0	0	0	0	8	0
Peterborough P.H.L.	4	0	0	4	0	4	0	0	0	0	0	4	0
Province of/de l'Ontario	191	0	0	190	3	178	0	0	12	0	0	179	0
Manitoba	20	0	0	20	0	20	0	0	2	0	0	20	0
Regina	35	0	0	35	1	35	0	1	0	0	0	35	2
Saskatoon	9	0	0	8	0	9	0	0	0	0	2	9	0
Province of/de la Saskatchewan	44	0	0	43	1	44	0	1	0	0	2	44	2
Calgary	56	0	0	28	0	29	0	0	0	0	0	22	0
Edmonton	179	0	0	184	20	179	0	0	0	0	17	101	10
Province of/de l'Alberta	235	0	0	212	20	208	0	0	0	0	17	123	10
Prairies	299	0	0	275	21	272	0	1	2	0	19	187	12
British Columbia/Colombie-Britannique	7	0	0	7	1	7	0	0	6	0	0	7	4
CANADA	618	0	0	625	27	594	2	1	28	0	19	538	18

Also available at: <http://www.phac-aspc.gc.ca/bid-bmi/dsd-dsm/rvdi-divr/index-html>

Aussi disponible sur le site: http://www.phac-aspc.gc.ca/bid-bmi/dsd-dsm/rvdi-divr/index_f.html

Table 2/Tableau 2

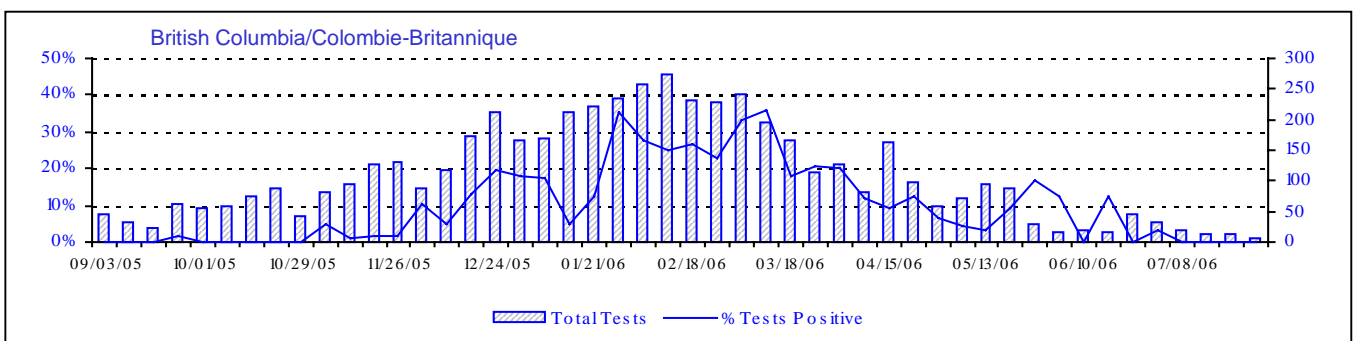
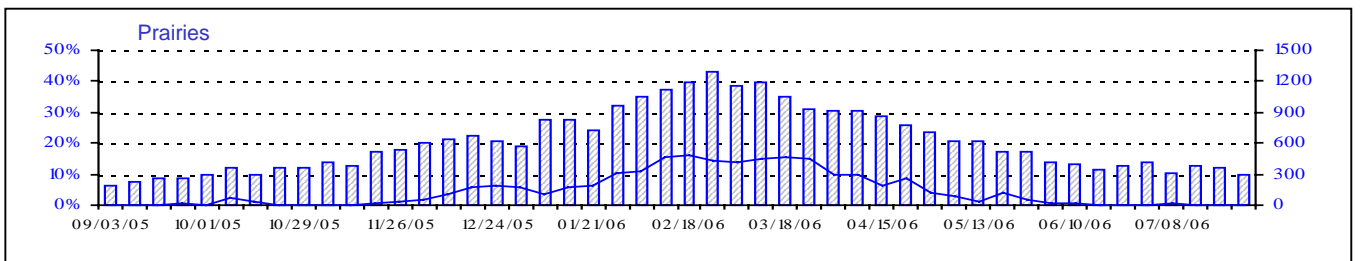
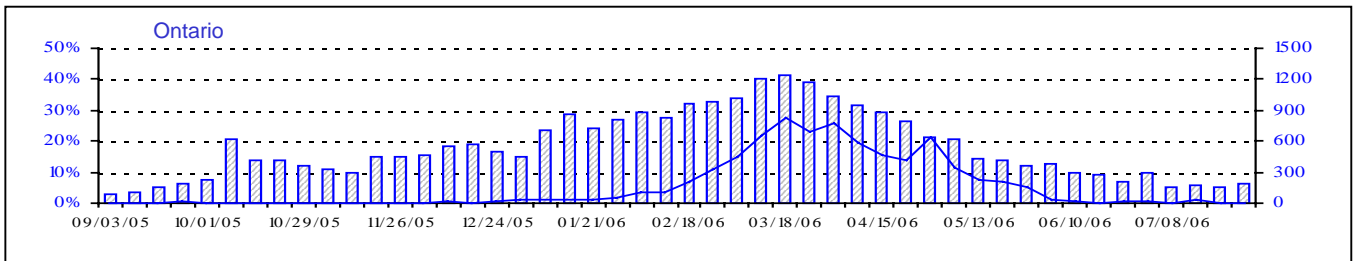
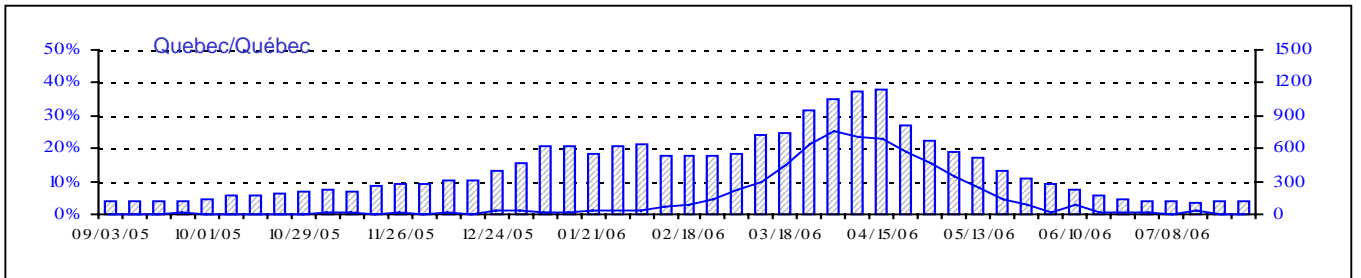
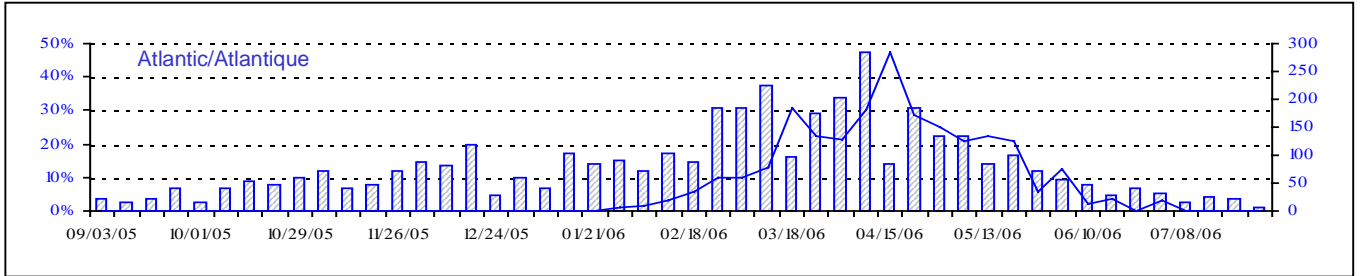
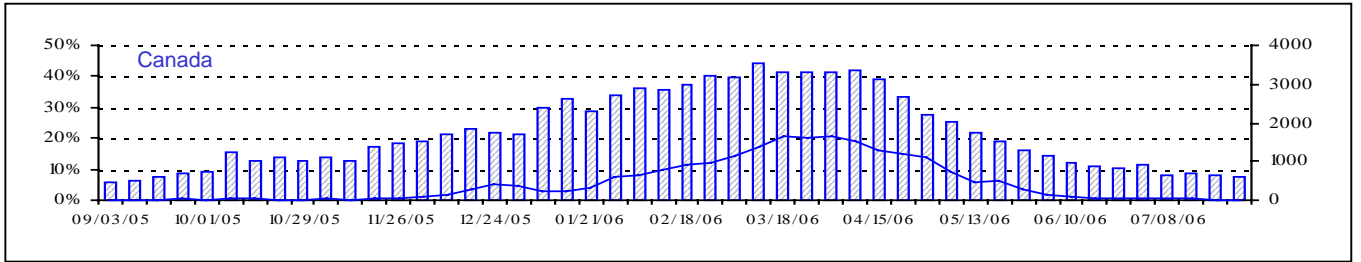
Respiratory Virus Detections/Isolations for the period August 28, 2005 - July 29, 2006
 Détection/isolément de virus des voies respiratoires pour la période du 28 août 2005 - 29 juillet 2006
 (Reporting Weeks 200535 -200630/Code hebdomadaire 200535-200630)

Reporting Laboratory Laboratoire rapporteur	Flu/Grippe Test	Flu/Grippe A Pos.	Flu/Grippe B Pos.	R.S.V. Test	R.S.V. Pos.	PIV Test	PIV 1 Pos.	PIV 2 Pos.	PIV 3 Pos.	PIV 4 Pos.	Other/Autre PIV Pos.	Adeno Test	Adeno Pos.
Newfoundland./Terre-Neuve	1051	44	34	354	52	113	0	0	1	0	0	148	5
Prince Edward Island./ Île-du-Prince-Édouard	143	5	3	312	66	143	1	1	1	0	1	138	18
Nova Scotia/Nouvelle-Écosse	1127	27	89	1126	71	865	28	4	10	0	0	865	27
New Brunswick/Nouveau-Brunswick	1612	81	198	1059	18	1019	7	2	10	0	0	1030	26
Atlantic/Atlantique	3933	157	324	2851	207	2140	36	7	22	0	1	2181	76
Région Nord-Est	1554	159	57	541	107	0	0	0	0	0	0	2	0
Québec-Chaudière-Appalaches	3333	165	41	3847	299	2331	35	16	16	3	0	3225	128
Centre-du-Québec	2980	374	76	1383	266	335	2	0	1	0	0	342	12
Montréal-Laval	9855	500	41	10050	1280	8052	83	48	143	6	0	8426	171
Ouest du Québec	1126	163	36	459	128	0	0	0	0	0	0	0	0
Montréal	921	96	7	560	159	0	0	0	0	0	0	0	0
Province of/de Québec	19769	1457	258	16840	2239	10718	120	64	160	9	0	11995	311
Ottawa P.H.L.	190	18	4	109	4	0	0	0	0	0	0	0	0
CHEO/HEEO - Ottawa	2126	156	31	2116	343	2116	6	0	6	0	0	2116	14
Kingston	1410	100	47	1410	75	1410	20	26	8	0	0	1410	5
Toronto Medical Laboratory	1390	38	16	1386	59	1388	6	1	8	0	2	1390	5
C.P.H.L. - Toronto	8368	354	333	8922	425	7706	118	71	63	3	0	7712	65
Sick Kids' Hospital - Toronto	3405	122	152	3773	321	4229	51	28	61	0	0	4229	42
Sunnybrook & Women's College HSC	541	18	5	541	24	541	0	5	9	0	0	541	0
Sault Ste. Marie	230	15	13	232	9	230	6	0	2	0	0	230	2
Timmins	480	10	27	480	13	470	21	2	5	0	0	474	7
St.Joseph's-London	886	22	9	886	148	886	3	3	1	0	17	886	7
London P.H.L.	3137	185	229	3137	187	3137	80	37	14	0	0	3137	11
Orillia P.H.L.	1288	68	56	1288	47	1288	32	31	11	0	0	1288	23
Windsor	556	44	15	524	4	426	1	2	1	0	0	420	3
Thunder Bay	254	7	12	174	4	254	13	4	1	0	0	254	7
Sudbury P.H.L.	422	10	16	422	19	422	14	9	1	0	0	444	4
Hamilton P.H.L.	424	18	1	514	36	351	6	0	0	0	0	331	0
Peterborough P.H.L.	1142	71	93	1142	103	1142	26	16	7	0	0	1142	7
Province of/de l'Ontario	26249	1256	1059	27056	1821	25996	403	235	198	3	19	26004	202
Manitoba	2441	63	27	2510	89	2248	35	3	11	0	1	2248	49
Regina	5356	309	241	5356	223	5356	156	5	8	3	0	5356	147
Saskatoon	1018	59	42	848	89	1018	0	0	0	0	30	1018	18
Province of/de la Saskatchewan	6374	368	283	6204	312	6374	156	5	8	3	30	6374	165
Calgary	6661	240	244	4949	211	4940	0	0	0	0	157	4014	172
Edmonton	14116	500	366	14413	857	13989	9	0	0	0	1029	6762	544
Province of/de l'Alberta	20777	740	610	19362	1068	18929	9	0	0	0	1186	10776	716
Prairies	29592	1171	920	28076	1469	27551	200	8	19	3	1217	19398	930
British Columbia/Colombie-Britannique	5215	483	334	5215	44	5215	62	5	18	0	0	5215	52
CANADA	84758	4524	2895	80038	5780	71620	821	319	417	15	1237	64793	1571

Also available at: <http://www.phac-aspc.gc.ca/bid-bmi/dsd-dsm/rvdi-divr/index.html>

Aussi disponible sur le site: http://www.phac-aspc.gc.ca/bid-bmi/dsd-dsm/rvdi-divr/index_f.html

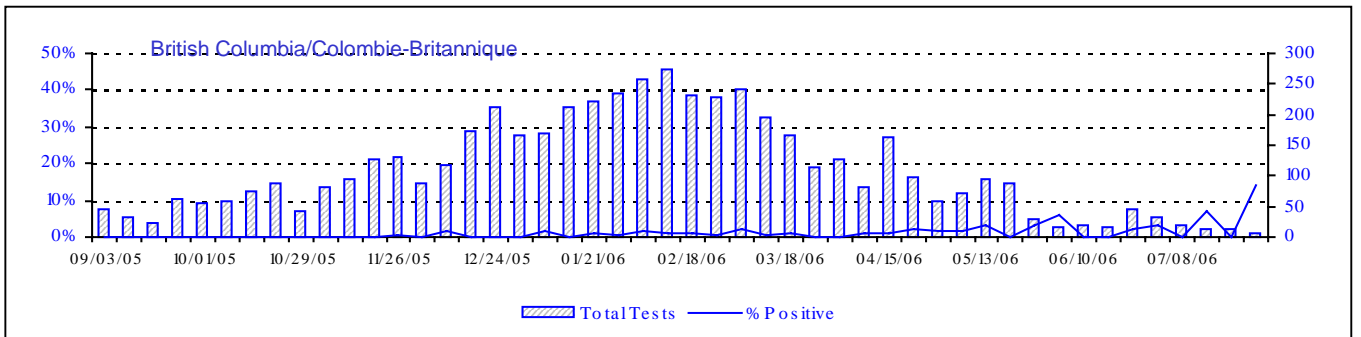
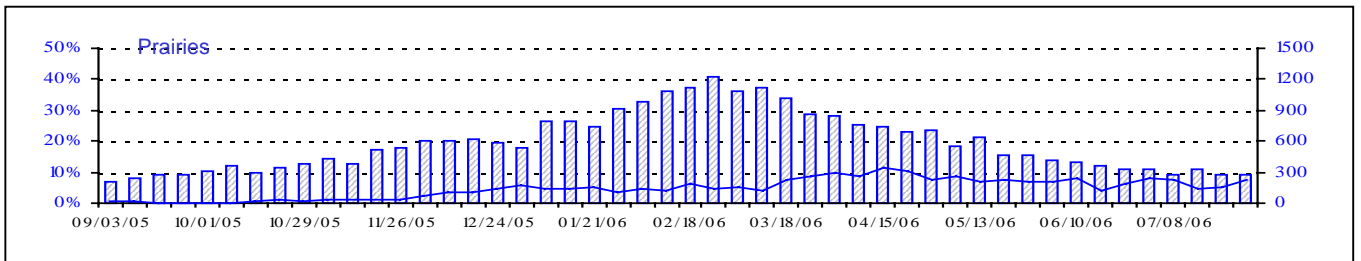
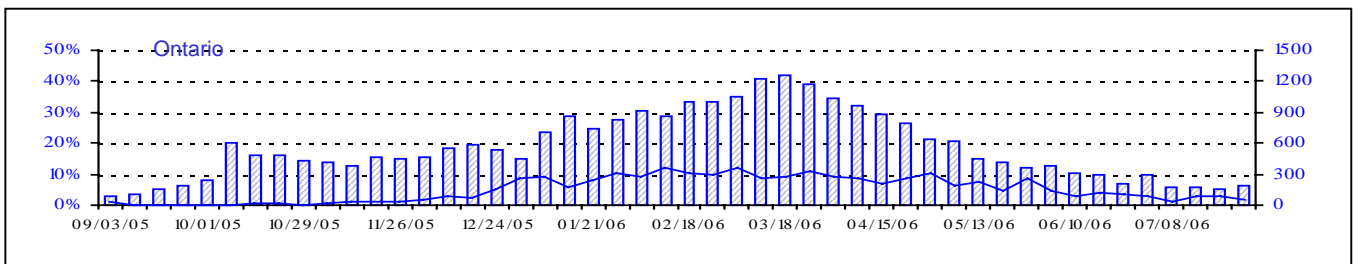
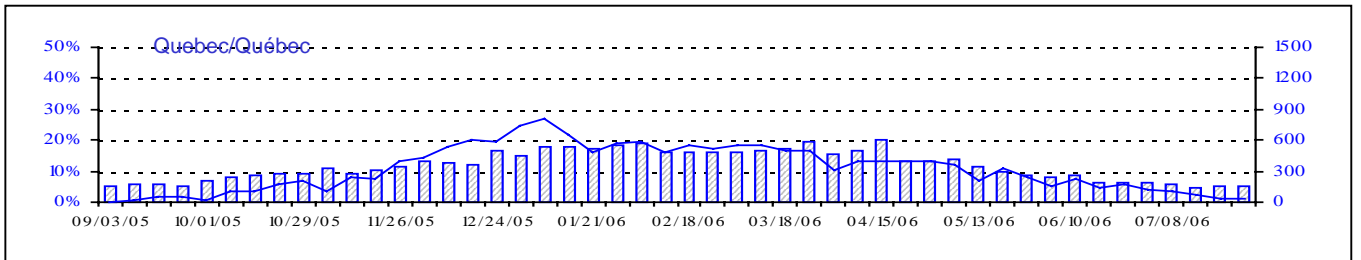
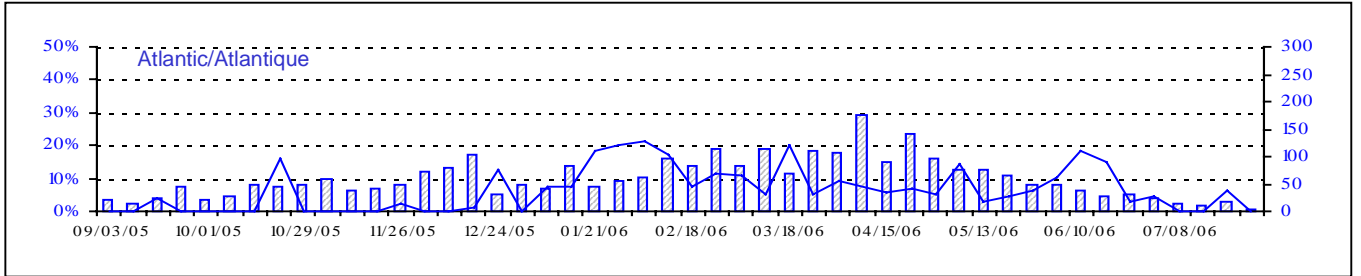
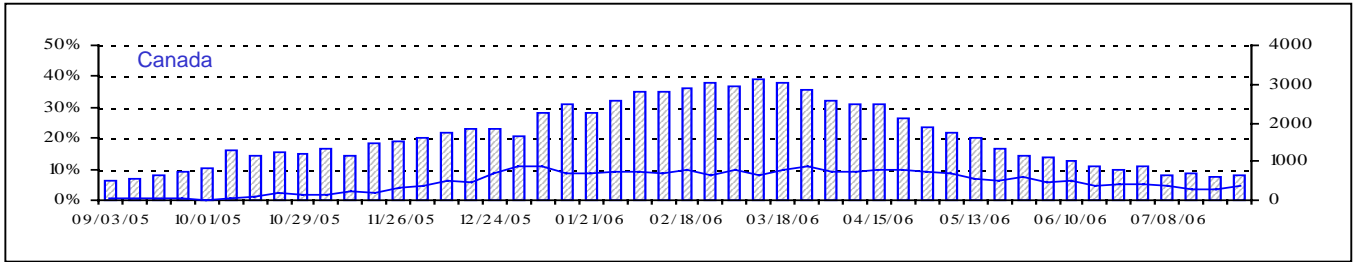
Positive Influenza Tests (%) in Canada by Region by Week of Report
 Détection du virus grippal au Canada, tests positifs (%) par région
 par semaine de déclaration



▨ Total Tests — % Tests Positive

Total Tests Total

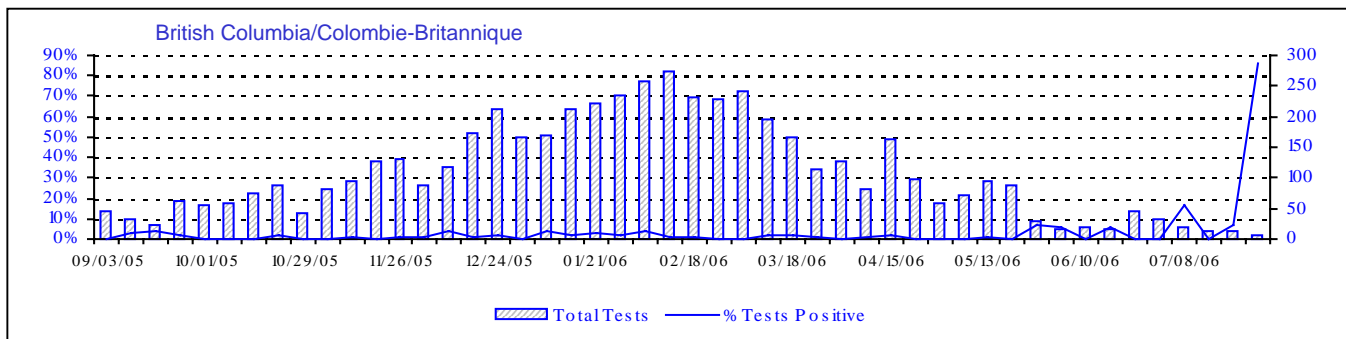
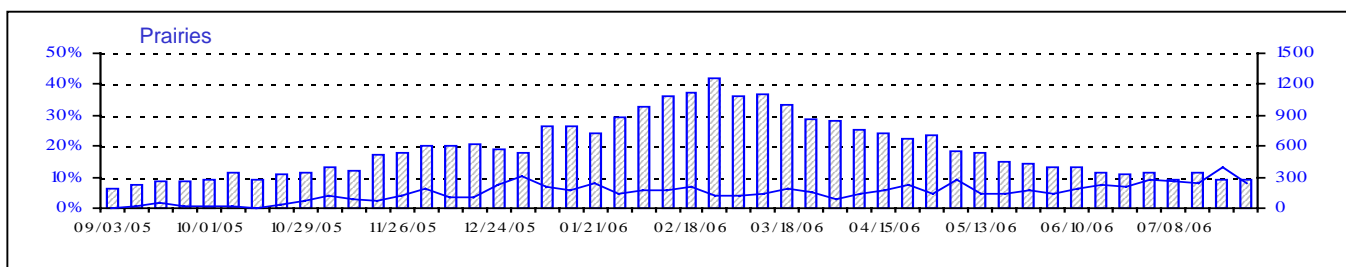
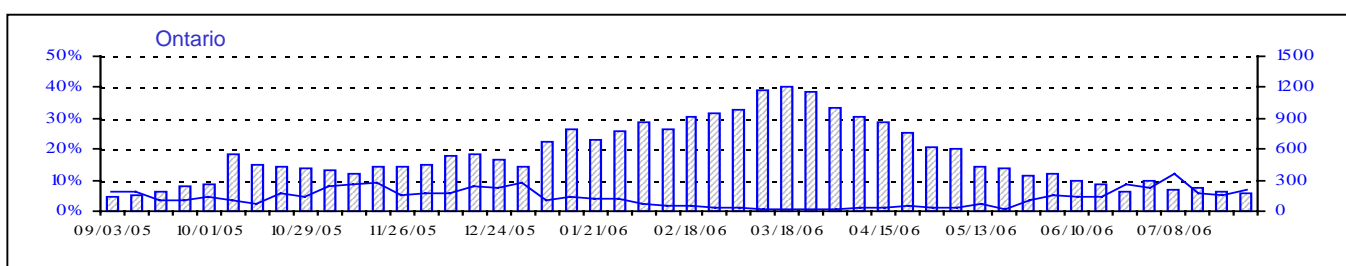
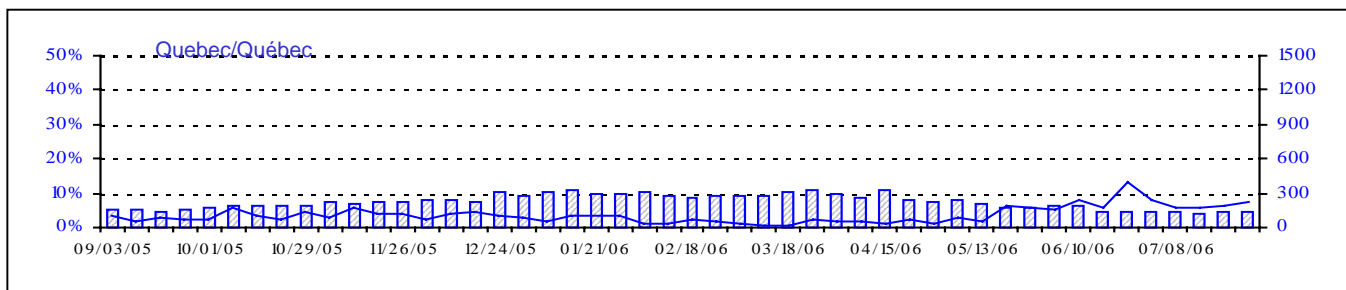
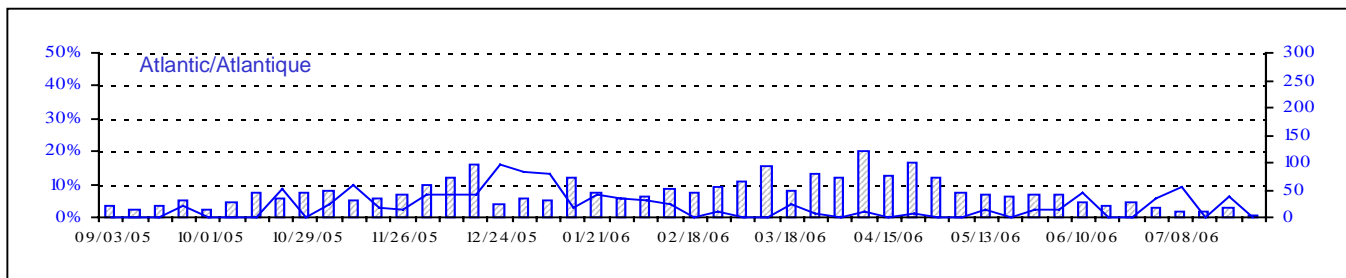
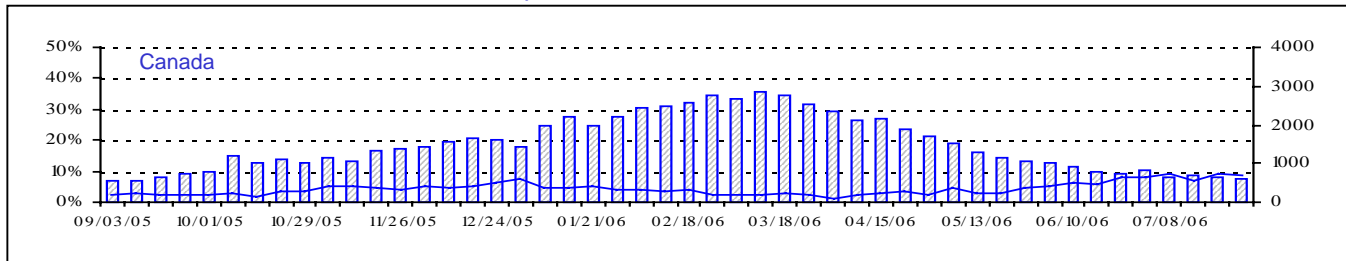
Positive RSV Tests (%) in Canada by Region by Week of Report
 Détection du virus respiratoire syncytial au Canada, tests positifs (%) par région
 par semaine de déclaration



Total Tests Total

▨ Total Tests — % Positive

Positive Parainfluenza Tests (%) in Canada by Region by Week of Report
 Détection du virus parainfluenza au Canada, tests positifs (%) par région
 par semaine de déclaration



Total Tests Total

▨ Total Tests — % Tests Positive

Positive Adenovirus Tests (%) in Canada by Region by Week of Report
 Détection des adénovirus au Canada, tests positifs (%) par région
 par semaine de déclaration

