

Geological Survey
of Canada



Current Research 2000-D3

Pre-Cairnside Formation carbonate-rich sandstone: evidence for a Cambrian carbonate platform in southwestern Quebec?

O. Salad Hersi and D. Lavoie

2000



Natural Resources
Canada

Ressources naturelles
Canada

Canada

©Her Majesty the Queen in Right of Canada, 2000
Catalogue No. M44-2000/D3E-IN
ISBN 0-660-18046-4

Available in Canada from the
Geological Survey of Canada Bookstore website at:
<http://www.nrcan.gc.ca/gsc/bookstore> (Toll-free: 1-888-252-4301)

A copy of this publication is also available for reference by depository
libraries across Canada through access to the Depository Services Program's
website <http://dsp-psd.pwgsc.gc.ca>. A list of these libraries can be consulted
at this site or obtained by calling the toll-free number above.

Price subject to change without notice

All requests for permission to reproduce this work, in whole or in part, for purposes of commercial use, resale or redistribution shall be addressed to: Geoscience Information Division, Room 200, 601 Booth Street, Ottawa, Ontario K1A 0E8.

Authors' address

O. Salad Hersi (osaladhe@NRCan.gc.ca)
D. Lavoie (delavoie@NRCan.gc.ca)
GSC Québec
Centre géoscientifique de Québec
Institut national de la recherche scientifique
2535, boulevard Laurier
C.P. 7500
Sainte-Foy, Québec G1V 4C7

Pre-Cairnside Formation carbonate-rich sandstone: evidence for a Cambrian carbonate platform in southwestern Quebec?¹

O. Salad Hersi and D. Lavoie
Quebec Geoscience Centre, Sainte-Foy

Salad Hersi, O. and Lavoie, D., 2000: Pre-Cairnside Formation carbonate-rich sandstone: evidence for a Cambrian carbonate platform in southwestern Quebec?; Geological Survey of Canada, Current Research 2000-D3, 8 p. (online; <http://www.nrcan.gc.ca/gsc/bookstore>)

Abstract: Logging of cores drilled from the Unimin quarry, near St.-Canut, southwestern Quebec, revealed bioclastic, dolomitic sandstone lithofacies below the upper Cambrian Cairnside Formation, upper Potsdam Group. This lithofacies is distinctly different from any previously known lithology of the Covey Hill Formation (lower Potsdam Group). Preliminary local and regional lithostratigraphic correlations suggest that the pre-Cairnside Formation, mixed siliciclastic-carbonate unit extends eastward as far as the St. Croix village, about 50 km southeast of the Québec City. Based on these correlations, two scenarios explaining possible regional depositional episodes and associated depositional systems tracts are also discussed.

Résumé : La description des carottes de forage provenant de la carrière Unimin, près de Saint-Canut, dans le sud-ouest du Québec, a révélé la présence d'un lithofaciès de grès dolomitique à texture bioclastique sous la Formation de Cairnside (partie supérieure du Groupe de Potsdam) du Cambrien supérieur. Ce lithofaciès est totalement différent de toute autre lithologie de la Formation de Covey Hill (partie inférieure du Groupe de Potsdam) décrite jusqu'à ce jour. Des corrélations lithostratigraphiques préliminaires à l'échelle locale et à l'échelle régionale nous portent à croire que l'unité mixte silicoclastique-carbonatée qui est antérieure à la Formation de Cairnside s'étend aussi loin vers l'est qu'au village de Sainte-Croix, à environ 50 km au sud-est de la ville de Québec. Sur la base de ces corrélations, deux scénarios possibles d'évolution régionale des épisodes de sédimentation et des cortèges de faciès associés sont présentés.

¹ Contribution to the Appalachian Foreland and St. Lawrence Platform Architectures in Quebec, New Brunswick and Newfoundland NATMAP Project

INTRODUCTION

It is generally accepted that the (?) [Late Proterozoic]–Lower Paleozoic succession of the central St. Lawrence Platform (i.e. Ottawa Embayment and southwestern Quebec Basin, Fig. 1) begins with terrestrial ‘redbeds’ of the Covey Hill Formation, succeeded by a marine sequence represented by clean sandstone of the Cairnside (Nepean in eastern Ontario) Formation and carbonate-dominated succession of the Beekmantown Group (Wilson, 1946; Lewis, 1971; Hofmann, 1972; Williams and Wolf, 1982; Wolf and Dalrymple, 1984; Globensky, 1986, 1987; Sanford, 1993; Dix et al., 1997a, b). Clark (1966, 1972) postulated that the upper part of the Covey Hill Formation (Rivière Aux Outardes Member) in the type area accumulated under shallow-marine conditions based on inorganic sedimentary structures, but later work consistently supports a fluvial depositional environment for the formation in southwestern Quebec (Hofmann, 1972; Globensky, 1986, 1987).

This paper recognizes a carbonate-rich lithostratigraphic unit which separates the typical Cairnside Formation from the the Covey Hill Formation in the region north of Montréal (St.-Canut, Quebec, Fig. 1). This unequivocally confirms the existence of pre-Cairnside Formation shallow-marine conditions in southwestern Quebec.

At this stage, we do not give the unit a formal name, but consider it as part of Clark’s (1966) Rivière Aux Outardes Member. We informally subdivide Clark’s (1966) Rivière Aux Outardes Member into two (?) laterally equivalent units, unit A is assigned to a carbonate-free unit in the type area of Covey Hill, south of Montréal (see Salad Hersi and Lavoie (2000) for further description of this unit) and unit B to the carbonate-rich part mentioned in this paper (Fig. 2). Recognition of unit B prompts us to lend a new look to the Lower Paleozoic stratigraphy and consideration of a possible Cambrian carbonate platform in southwestern Quebec. Cambrian carbonate platforms are well known in the neighboring regions of New York (Fisher, 1977) and western Newfoundland (James and Stevens, 1986)

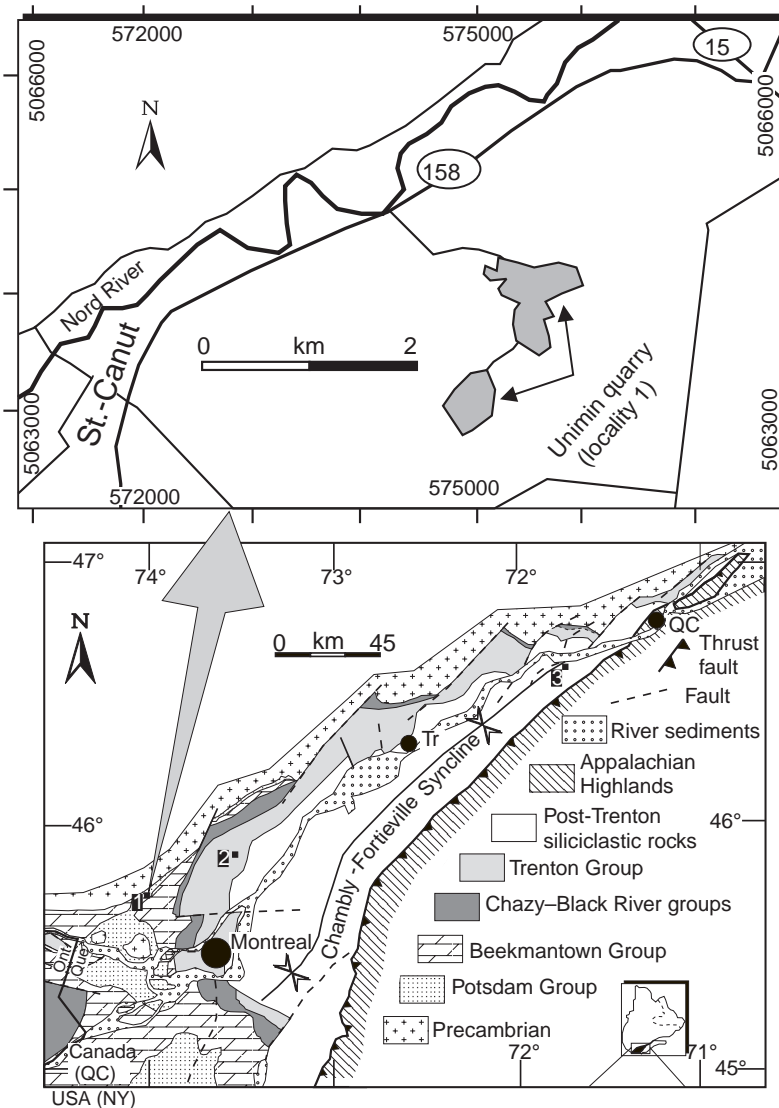


Figure 1. Geological map of southwestern Quebec and locations mentioned in the text. Carbonate-rich sandstone samples collected from cores drilled within the premises of the Unimin quarry (locality 1, see the expanded part of the map for detailed geographic location of the quarry) were petrographically studied and reported in the text.

Lithology

The strata lying beneath the typical Cairnside Formation beds at Unimin quarry (hereafter called unit B of the Rivière Aux Outardes Member) consist of two lithofacies. Lithofacies I consists of medium-gray (somewhat dark and brownish locally), medium- to coarse-grained, bioclastic, dolomitic

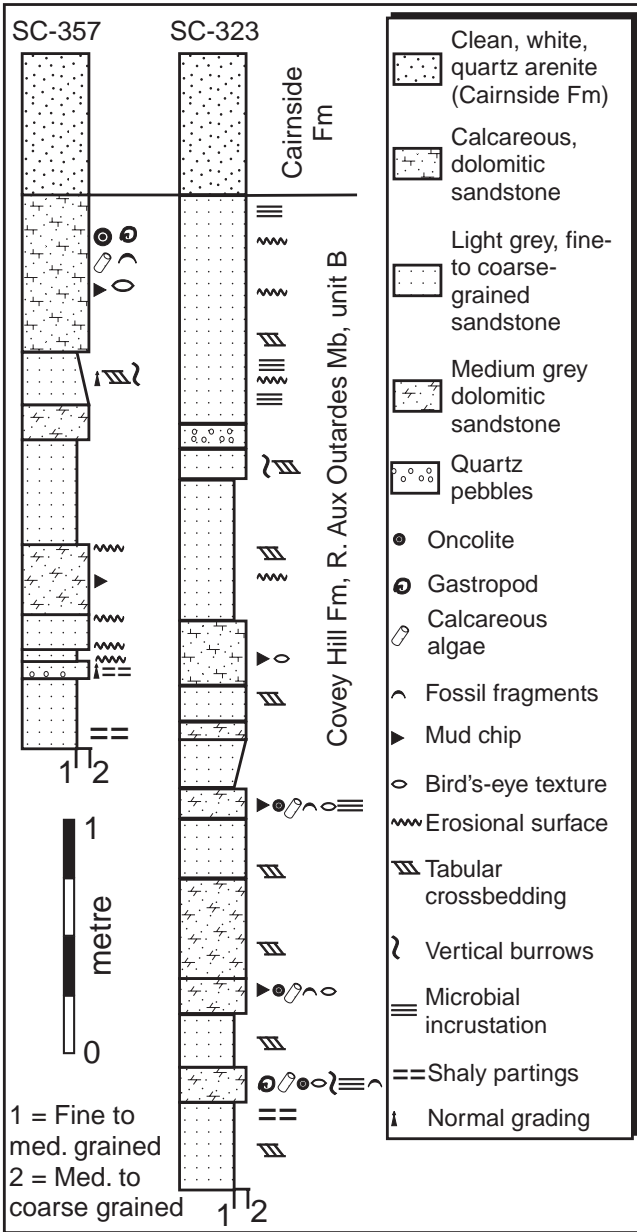


Figure 3. Lithostratigraphic correlations of two cores logged from shallow wells drilled from the Unimin quarry. The wells were drilled within the premises of the quarry, but their specific locations were not disclosed to us. Despite the short distance (within a kilometre) between the two wells, no detailed lithological correlation can be satisfactorily carried out. This is probably due to erosion which is common at the top of pre-Cairnside Formation sandstone. Many cores show erosional surface at the unit B–Cairnside Formation contact.

sandstone with a fine-grained dolostone matrix. Rip-up dolomudstone fragments, as well as patches of dolomudstone which merge with the matrix, are common. Small white spots filled by calcite and/or dolomite (fenestral birdseye structures), scour surfaces, vertical to subhorizontal burrows, millimetre-scale shaly partings, and bands of microbial incrustation which bound the framework grains together are all present. The lithofacies is locally calcareous and appears to be due to relatively higher calcite cement. Framework grains of lithofacies I are dominated by quartz. The latter is fine to very coarse sand size, moderately sorted, and well to moderately rounded. Other important grains in this facies are bioclasts, and belong to three types, oncolites, mollusks (gastropods), and calcareous algae (Fig. 4A–C). These bioclasts range from coarse sand to pebble size, and are generally unbroken. The oncolites have well preserved internal semiconcentric laminae, and develop as single isolated grains

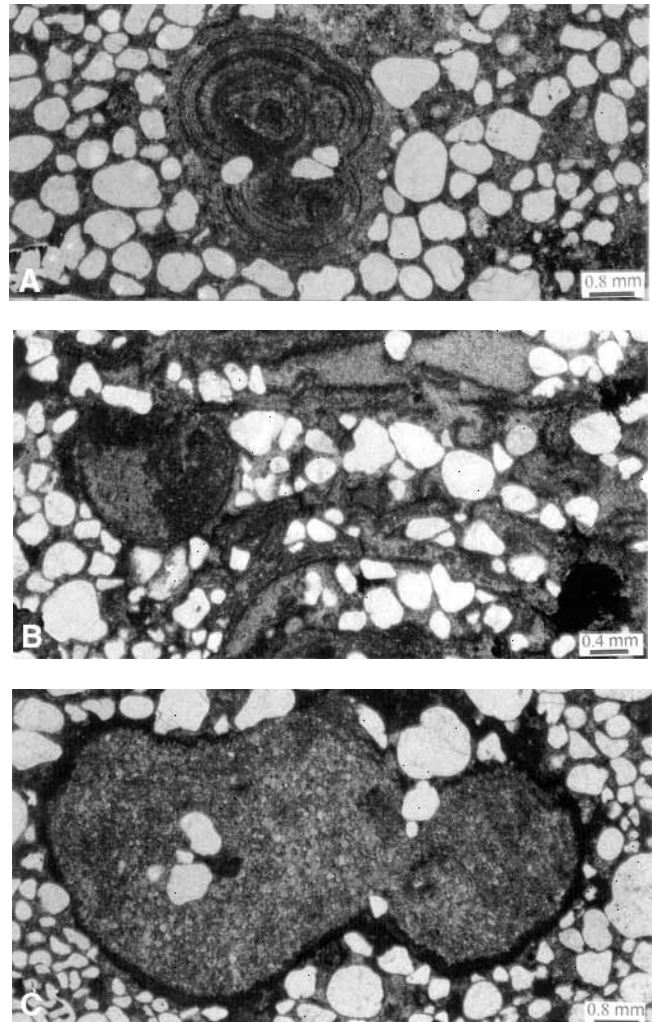


Figure 4. Coarse-grained bioclasts in a medium- to coarse-grained sandstone of unit B. All photographs are from samples collected from the Unimin cores, locality 1. Fossils are intact and include A) oncolite, B) gastropod, and C) calcareous algae. Note also the micrite envelopes the gastropod and the calcareous algae.

or as composites of two to four coalescing grains (Fig. 4A). Grains of calcareous algae are recrystallized to a degree that any original internal texture is not recognizable. However, micrite envelopes retained well their external shapes (Fig. 4C).

Lithofacies II consists of a medium- to coarse-grained, light grey, nondolomitic to slightly dolomitic sandstone. It is usually crossbedded (tabular crossbedding), locally pebbly and vertically burrowed. Horizontal to irregular shaly partings (millimetre scale) which weather to rusty colour and local dolomudchips are present. Thin sections from this lithofacies are not currently available and no petrographic attributes can be documented at this time.

Depositional environment

The nature and relationship among the carbonate and siliciclastic components of unit B, Rivière Aux Outardes Member, suggest that the depositional setting was favorable for intermixing of the two facies. This mixing could have took place in one of two scenarios, 1) autochthonous generation of carbonate materials (bioclasts and mud) within a terrigenous-dominated shelf (in situ mixing model of Mount (1984)); or 2) interfacies mixing of which the unit represents the “tailoring” zone between two adjacent siliciclastic and carbonate facies (facies mixing model of Mount, 1984). Since a pre-Cairnside Formation, carbonate-dominated unit is not currently known in southwestern Quebec, the first scenario is now preferred. The general depositional setting was most likely subtidal to intertidal. This is suggested by the presence of the birdseye texture, intact bioclasts, dolomudstone matrix, microbial incrustations, mudchips, and horizontal and vertical burrows (King and Chafetz, 1983; Carozzi, 1989). The subtidal-intertidal environment was characterized by alternating levels of high-energy (deposition of the crossbedded sandstone) and low-energy (deposition of the carbonate-rich sandstone) conditions. In the latter case, microbial grain-binding and production of the skeletal material were possible.

DISCUSSION

Correlations

The Unimin cores that penetrate through the upper part of the Rivière Aux Outardes Member (i.e. unit B) are shallow, however, they stimulated a new re-evaluation of the stratigraphic sequence and consideration of a possible Cambrian carbonate platform in southwestern Quebec. As part of our effort to assess the Lower Paleozoic strata in the region, we logged one

well drilled near Mascouche, Quebec (Quinto-International No. 1 Mascouche, Fig. 1, locality 2). In this well, beds that Clark (1972) considered to be Covey Hill Formation are

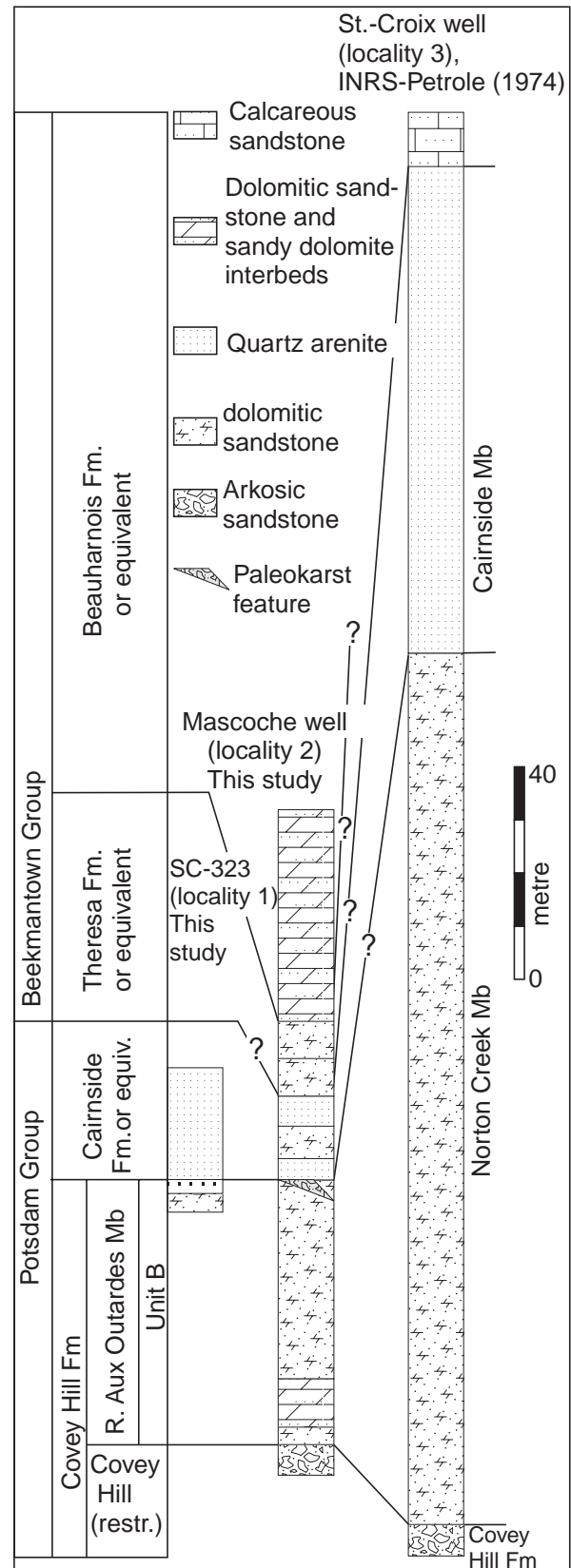


Figure 5. Possible lithostratigraphic correlations between one of the Unimin cores and other two cores from localities 2 and 3. Section from locality 3 is redrawn from Institut National de la Recherche Scientifique-Pétrole (1974). The nomenclature shown on the right side of the St.-Croix well is the one proposed by Institut National de la Recherche Scientifique-Pétrole (1974).

overlain by a 50 m thick section of medium-grey, well burrowed and nonburrowed, dolomitic sandstone and sandy dolostone. The upper contact of the unit is erosional, and a karstified zone with breccia occurs near the top. This unit is overlain by a 15 m thick unit of interbedded coarse-grained, “Cairnside-like” lithofacies and dolomitic sandstone lithofacies. This is in turn succeeded by sandy dolostone and dolomitic sandstone interbeds of the Theresa Formation (Fig. 5). It is our preliminary correlation that the pre-Cairnside Formation dolomitic sandstone of unit B in the cores of Unimin is correlative with the lower dolomitic sandstone unit overlying the Covey Hill Formation in the core of the Mascouche well. The Cairnside Formation probably subdivides laterally (eastward) into thinner units which interfinger with the relatively impure sandstone in the middle part of the Mascouche section (Fig. 5).

Another correlation also suggests that unit B of the Rivière Aux Outardes Member extends eastward as far as the Ste-Croix area, Quebec. Geological report of a core from a well drilled by SOQUIP (SOQUIP Shell Ste-Croix No. 1, about 10 km east of Ste-Croix, Fig. 1, locality 3) documents that a dolomitic sandstone unit intervenes between rocks of Covey Hill and Cairnside formation lithologies (Institut

National de la Recherche Scientifique-Pétrole, 1974, Fig. 5). Despite the stratigraphic arrangement between the lower dolomitic sandstone and the overlying “Cairnside-type” facies in this well, Institut National de la Recherche Scientifique-Pétrole (1974) applied Norton Creek Member (equivalent to the Theresa Formation) to the lower dolomitic sandstone, and Cairnside Member to the overlying clean sandstone. At this stage, we envisage that there is no stratigraphic ‘inversion’. The Cairnside Formation and the underlying dolomitic sandstone in the region north of Montréal (Unimin and Mascouche cores) are correlative with the Institut National de la Recherche Scientifique-Pétrole’s (1974) Cairnside Member and underlying ‘Norton Creek Member’, respectively.

Regional depositional episodes

Based on the limited available information, and proposed correlations, two scenarios of possible regional depositional episodes are hypothesized. The first scenario considers two depositional episodes (Fig. 6A). Episode I — deposition of the subaerially accumulated, (?)Hadrynian to Cambrian lower Covey Hill Formation (rift-basin fill; lowstand systems tract) is truncated by an unconformity which marks the base

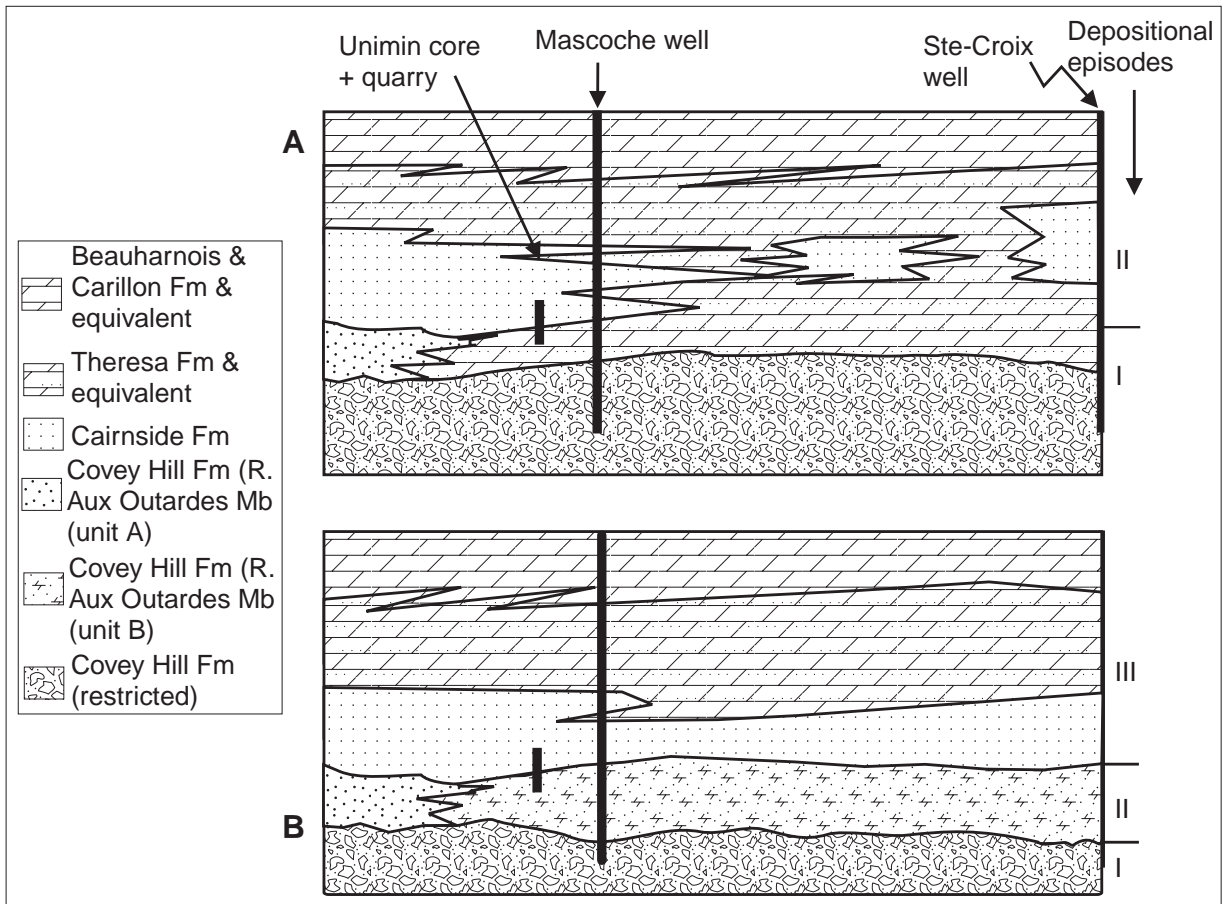


Figure 6. Sketches showing two hypothetic scenarios to explain possible depositional episodes for the (?)Hadrynian–Cambrian–Lower Ordovician strata in southwestern Quebec (see text for further explanation). Not to scale.

of the earliest transgressive, shallow-marine succession. Episode II — shallow-marine strata (Cambrian to Ordovician) includes all siliciclastic and carbonate strata from the top of the sediments of episode I to the top of the Beekmantown Group (transgressive systems tracts and highstand systems tracts, respectively).

The other scenario hypothesizes three depositional episodes (Fig. 6B). Episode I is similar to that of the first scenario (lowstand systems tract). Episode II comprises shallow-marine strata (Cambrian) of all or part of the Rivière Aux Outardes Member (units A and B, transgressive systems tracts and highstand systems tracts). After deposition episode II, regression took place, and an unconformity developed on the top of the sediments of episode II. The erosional and karstic features at the top of unit B in the Unimin and Mascouche cores are related to this unconformity. Episode III includes strata from the Cairnside Formation to the top of the Beekmantown Group. The Cairnside Formation is shallow marine in southwestern Quebec but its equivalent in the Ottawa Embayment, the Nepean Formation, includes basal fluvial sandstone units overlain by shallow-marine facies (Wolf and Dalrymple, 1984). Thus, the Cairnside–Nepean formations may partially represent a lowstand systems tract, whereas the overlying Beekmantown Group corresponds to transgressive and highstand systems tracts.

CONCLUSIONS

Cores drilled from the Unimin quarry, near St.-Cnut north of Montréal, show a distinct lithostratigraphic unit occurring below quartz arenite lithofacies of the Cairnside Formation. Although previous work considered this pre-Cairnside Formation unit as Covey Hill Formation, our work shows that it is different from any previously known lithofacies of the Covey Hill Formation. However, at this stage, we apply an informal term (unit B) for this unit and consider as part of the Rivière Aux Outardes Member of the Covey Hill Formation. Unit B consists of interbedded crossbedded, medium- to coarse-grained, nondolomitic to slightly dolomitic sandstone and burrowed, bioclastic, dolomitic sandstone. Sedimentary structures preserved in the unit, and the nature and relationships among its framework grains led us to infer a subtidal to intertidal depositional setting. In situ carbonate production within a terrigenous-dominated shelf caused mixing of the siliciclastic and carbonate grains.

Preliminary local and regional correlations suggest that unit B extends eastward as far as St. Croix village, Quebec. Based on these correlations, two scenarios of depositional episodes were hypothesized. The first one envisages one depositional sequence in which the subaerially deposited lower Covey Hill Formation represents a lowstand systems tract, and the overlying marine succession (Rivière Aux Outardes Member, Cairnside Formation, and the Beekmantown Group) as transgressive and highstand systems tracts. The other alternative scenario considers two sequences separated by the possibly unconformable surface below the Cairnside Formation. In this case, the lower depositional sequence includes the subaerially accumulated part of the Covey Hill Formation (lowstand systems tract) and the Rivière Aux

Outardes Member (units A+B, transgressive systems tract, and highstand systems tract). The upper depositional sequence is represented by the Cairnside–Nepean (partially subaerial in the Ottawa Embayment) formations (lowstand systems tract) and the overlying Beekmantown Group (transgressive systems tract and highstand systems tract).

ACKNOWLEDGMENTS

This study is supported by the Institut National de la Recherches Scientifique, Université du Québec, and the GSC-Ste-Foy, and it is part of the NATMAP Project, Montréal Transect (Project No. 990001ML). We thank to the owners of the quarries, as well as the Québec Ministry of Natural Resource for allowing us to map their quarries and cores.

REFERENCES

- Bernstein, L.**
1992: A revised lithostratigraphy of the Lower - Middle Ordovician Beekmantown Group, St. Lawrence Lowlands, Quebec and Ontario; Canadian Journal of Earth Sciences, v. 29, p. 2677–2694.
- Carozzi, A.V.**
1989: Carbonate Rock Depositional Models: A Microfacies Approach; Prentice Hall, Englewood Cliffs, New Jersey, 604 p.
- Clark, T.H.**
1966: Châteauguay area; Québec Department of Natural Resources, Geological Report 122, 63 p.
1972: Montreal area; Ministère des richesses naturelles du Québec, Geological Report 152, 244 p.
- Cushing, H.P.**
1908: The lower portion of the Paleozoic section in northwestern New York State; Geological Society of America Bulletin, v. 19, p. 155–176.
- Dix, G.R., Salad Hersi, O., James, N.P., and Armstrong, D.K.**
1997a: Regional stratigraphy and general sedimentology of platform-interior to basin facies of the Middle Ordovician succession in eastern Ontario; Field Trip B2 Guidebook, Geological Association of Canada–Mineralogical Association of Canada, Joint annual meeting, Ottawa, 66 p.
- Dix, G.R., Salad Hersi, O., Molgat, M., and Arnott, R.W.C.**
1997b: Lithostratigraphy and sequence stratigraphy of the Lower Paleozoic succession in the Ottawa Valley; Field Trip A2 Guidebook, Geological Association of Canada–Mineralogical Association of Canada, Joint Annual Meeting, Ottawa, 48 p.
- Doolan, B.L., Gale, M.H., Gale, P.N., and Hoar, R.S.**
1982: Geology of the Quebec re-entrant: possible constraints from early rifts and the Vermont-Quebec serpentine belt; in Major Structural Zones and Faults of the Northern Appalachians, (ed.) P. St-Julien and J. Beland; Geological Association of Canada, Special Paper 24, p. 87–115.
- Fisher, D.W.**
1977: Correlation of Hydernian, Cambrian, and Ordovician rocks in New York State; New York State Museum, Map and Chart Series, Folio 25, 75 p.
- Globensky, Y.**
1982: Région de Vaudreuil; Gouvernement du Québec, Ministère de l'Énergie et des Ressources, Rapport Géologique-199, 59 p.
1986: Géologie de la région de Saint-Chrysostome et de Lachine (sud); Gouvernement du Québec, Ministère de l'Énergie et des Ressources, MM 84-02, 167 p.
1987: Géologie des Basses-Terres du Saint-Laurent; Gouvernement du Québec, Ministère de l'Énergie et des Ressources, MM 85-02, 63 p.
- Hofmann, H.J.**
1963: Ordovician Chazy Group in Southern Québec; American Association of Petroleum Geologists Bulletin, v. 47, p. 270–301.
1972: Stratigraphy of the Montreal area; 24th International Geological Congress, Montréal, Quebec, Excursion Guidebook B-03, 34 p.

Institut National de la Recherche Scientifique-Pétrole

1974: Ste-Croix: Etude sédimentologique, pétrographie, minéralogie, palynologie, réflectométrie. Rapport final; INRS-Pétrole, BK/hm 3.4.74, SOQUIP Ref. # 2045, Université du Québec, Institut National de la Recherche Scientifique, Ste-Foy, Quebec, 50 p., 12 plates.

James, N.P. and Stevens, R.K.

1986: Stratigraphy and correlation of the Cambro-Ordovician Cow Head Group, western Newfoundland; Geological Survey of Canada, Bulletin 366, 143 p.

King, D.T., Jr. and Chafetz, H.S.

1983: Tidal-flat to shallow shelf deposits in the Cap Mountain Limestone Member of the Riley Formation, Upper Cambrian of central Texas; Journal of Sedimentary Petrology, v. 53, p. 261–273.

Lavoie, D.

1992: The Middle Ordovician (Caradocian) Deschambault Formation, St. Lawrence Lowlands, southern Quebec: a shallow water carbonate ramp on a drowning platform; *in* Current Research, Part D; Geological Survey of Canada, Paper 92-1D, p. 223–234.

1993: Lithostratigraphy and paleoenvironmental evolution of the Upper Ordovician Trenton Group, southern Quebec; *In* Current Research, Part D; Geological Society of Canada, Paper 93-1D, p. 161–172.

1994: Diachronous tectonic collapse of the Ordovician continental margin, eastern Canada: comparison between the Quebec Reentrant and St. Lawrence Promontory; Canadian Journal of Earth Sciences, v. 31, p. 1309–1319.

Lewis, D.W.

1971: Qualitative petrographic interpretation of Potsdam sandstone (Cambrian), southwestern Quebec; Canadian Journal of Earth Science, v. 8, p. 858–882.

Logan, W.E.

1863: Geology of Canada; Geological Survey of Canada, Report of progress from its commencement to 1863; Geological Survey of Canada, Ottawa, 983 p.

Mount, J.F.

1984: Mixing of siliciclastic and carbonate sediments in shallow shelf environments; Geology, v. 12, p. 432–435.

Raymond, P.E.

1913: Ordovician of Montreal and Ottawa; 12th International Geological Congress, Montréal, Quebec, Guidebook 3, p. 137–162.

Salad Hersi, O.

1997: Stratigraphic revision of the upper Chazy to Trentonian succession, and sedimentologic and diagenetic aspects of the Blackriveran strata, Ottawa Embayment, eastern Ontario, Canada; Ph.D. thesis, Carleton University, Ottawa, Ontario, 370 p.

Salad Hersi, O. and Dix, G.R.

1997: Hog's Back Formation: a new (Middle Ordovician) stratigraphic unit, Ottawa Embayment, eastern Ontario, Canada; Canadian Journal of Earth Sciences, v. 34, p. 588–597.

Salad Hersi, O. and Lavoie, D.

2000: Lithostratigraphic revision of the Cambrian Cairnside Formation, upper Potsdam Group, southwestern Québec, Canada; Geological Survey of Canada, Current Research 2000-D4, 8 p. (online; <http://www.nrcan.gc.ca/gsc/bookstore>)

Sanford, B.V.

1993: St. Lawrence Platform - Geology; Chapter 11 *in* Sedimentary Cover of the Craton in Canada, (ed.) D.F. Stott and J.D. Aitken; Geological Survey of Canada, Geology of Canada, no. 5, p. 723–786 (*also* Geological Society of America, The Geology of North America, v. D-1).

Sloss, L.L.

1963: Sequences in the cratonic interior of North America; Geological Society of America Bulletin, v. 74, p. 93–114.

Williams, D.A. and Wolf, R.R.

1982: Paleozoic Geology of the northern part of the Ottawa - St. Lawrence Lowland, southern Ontario; *in* Summary of Field Work; Ontario Geological Survey, Miscellaneous Paper 106, p. 132–134.

Wilson, A.E.

1946: Geology of the Ottawa - St. Lawrence Lowland, Ontario and Quebec; Geological Survey of Canada, Memoir 241, 65 p.

Wolf, R.R. and Dalrymple, R.W.

1984: Sedimentology of the Cambro-Ordovician sandstones of eastern Ontario; Ontario Geological Survey, Miscellaneous Paper 121, p. 240–252.