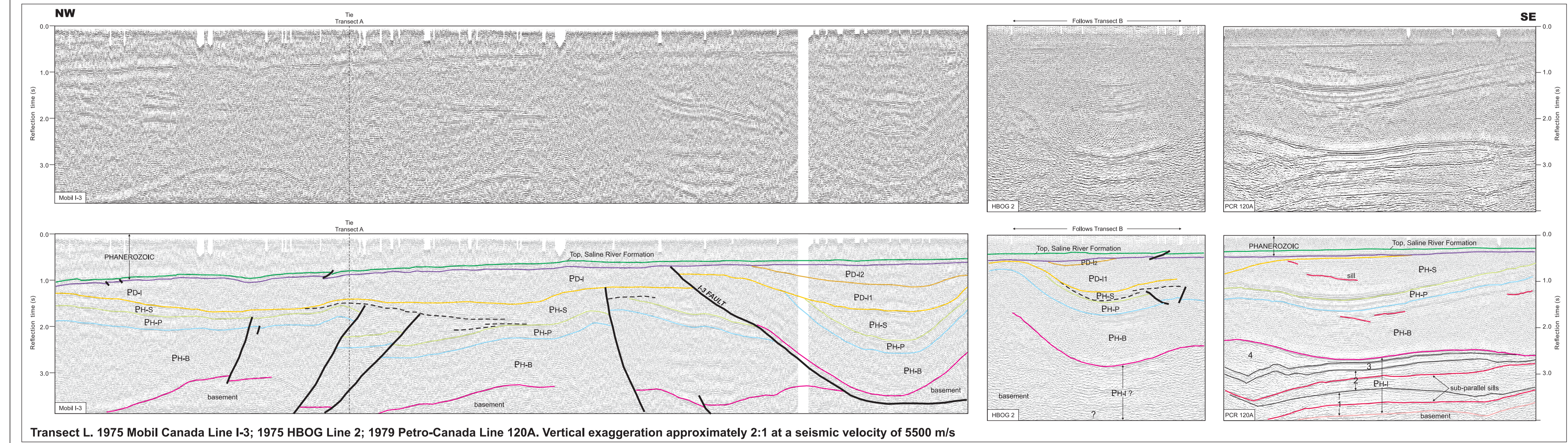
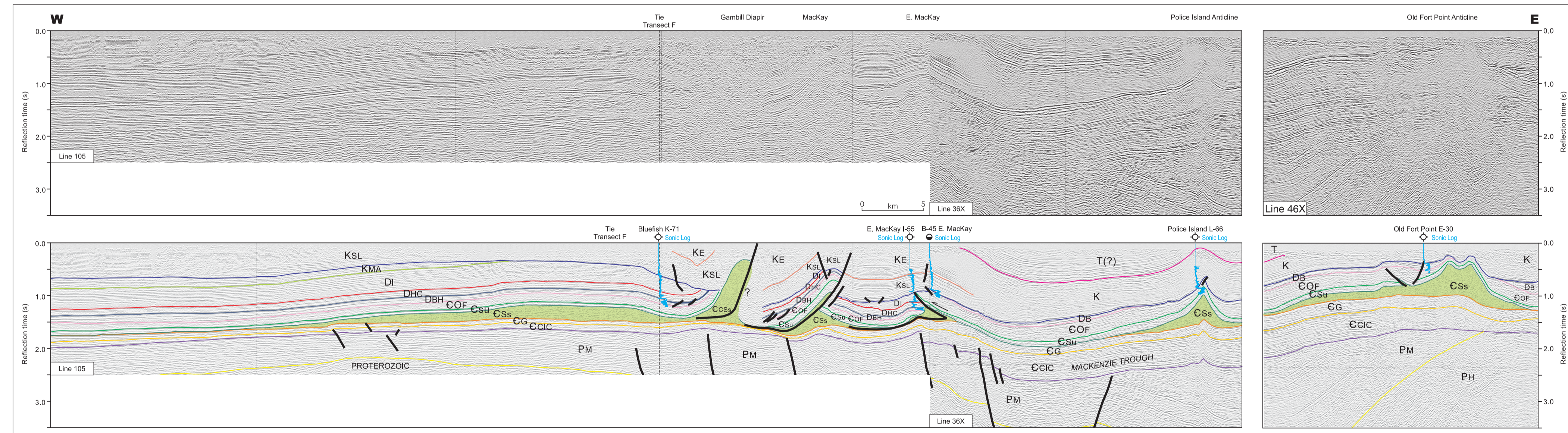


Transect K. 1979 Petro-Canada Lines 7A and 135A; 1983 Petro-Canada Line 70X; 1986 Petro-Canada Lines 8505 and 8416. Vertical exaggeration approximately 2:1 at a seismic velocity of 5500 m/s



Transect L. 1975 Mobil Canada Line I-3; 1975 HBOG Line 2; 1979 Petro-Canada Line 120A. Vertical exaggeration approximately 2:1 at a seismic velocity of 5500 m/s



Transect M. 1983 NSM Resources Line 105; 1992 Chevron Canada Resources Lines 36X and 46X. Transect passes through CS et al. Bluefish K-71, CONOCO et al. East MacKay I-55, Candel DECKMG et al. East MacKay B-45, Candel DECKMG et al. Police Island L-66, and Acquitaine Old Fort Point E-30 wells. Vertical exaggeration approximately 1:1

