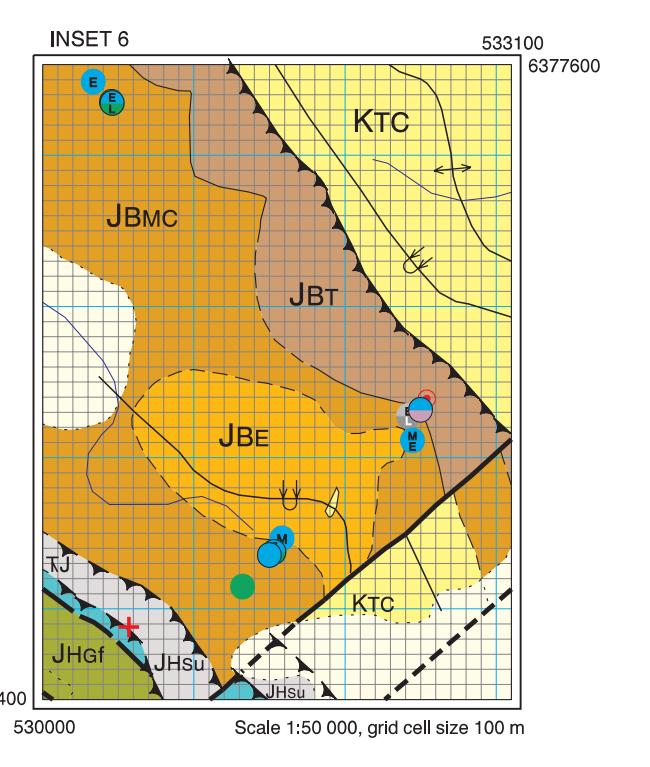
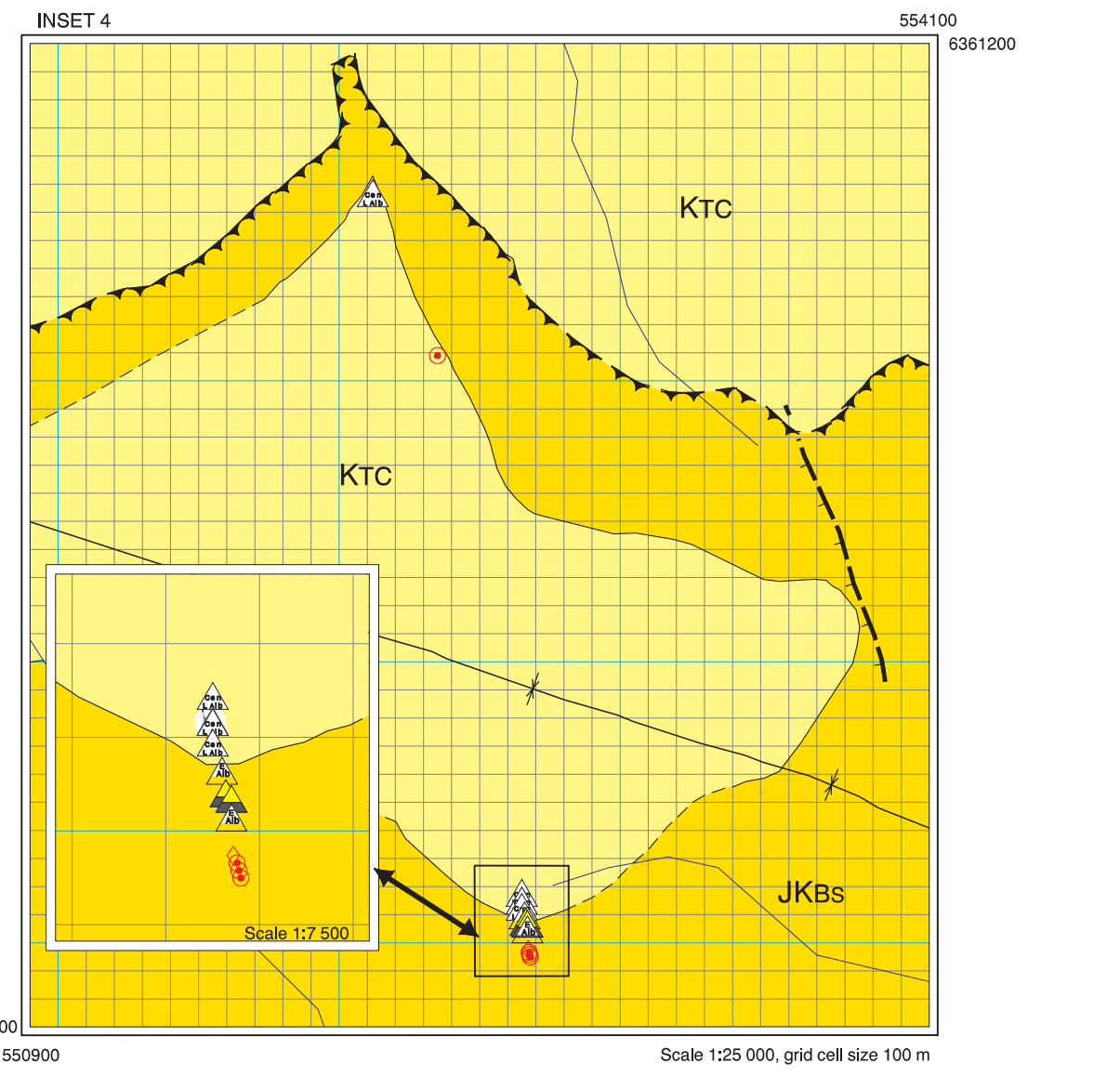
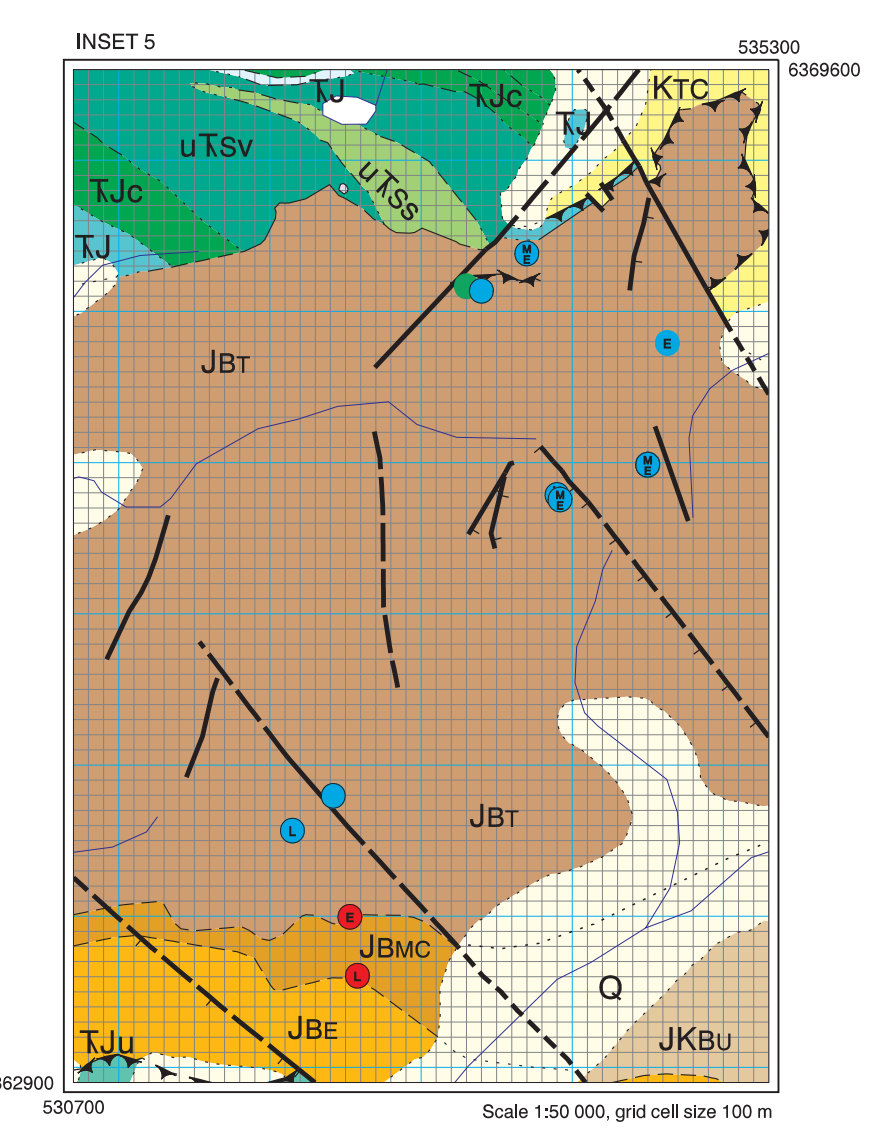
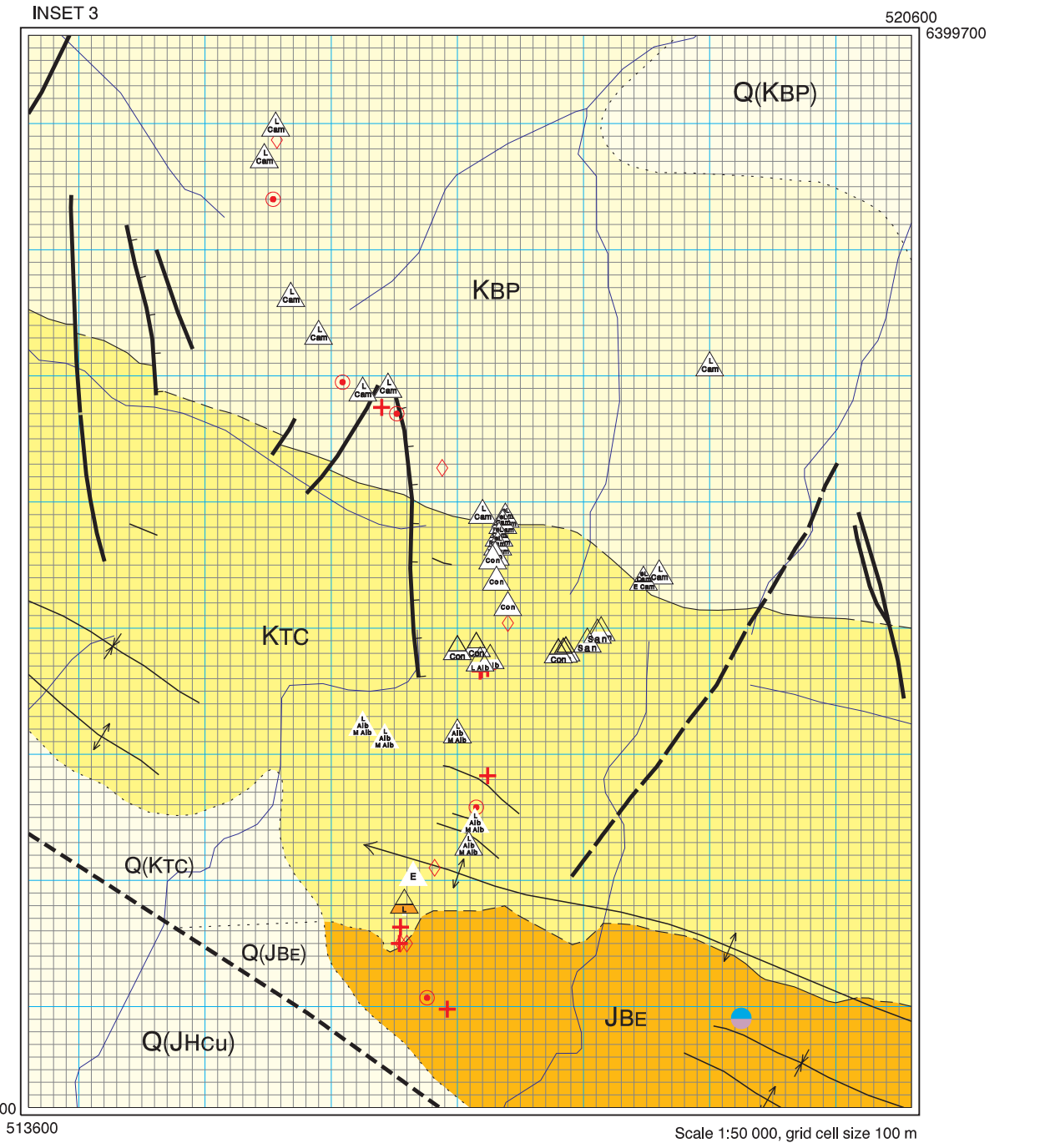
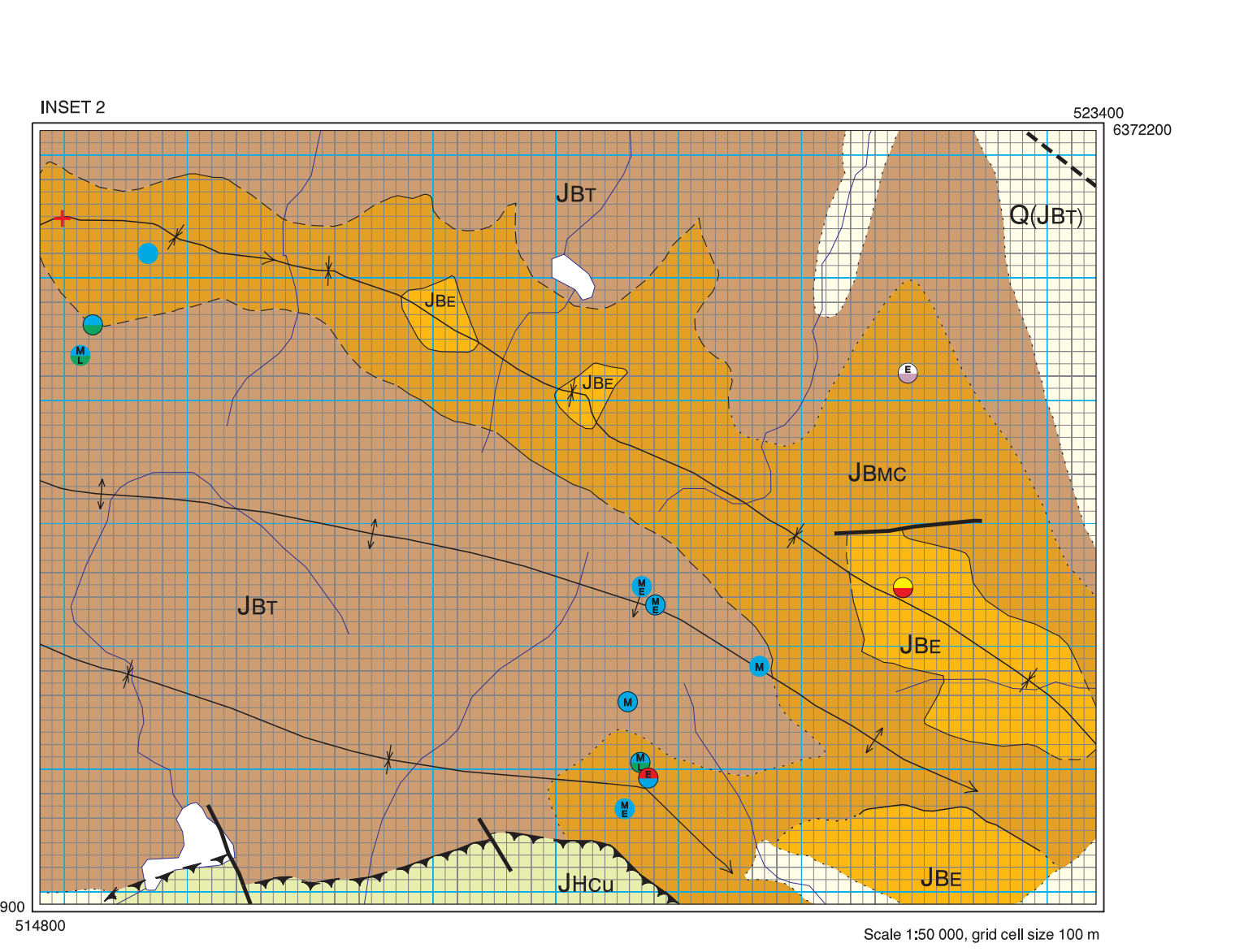
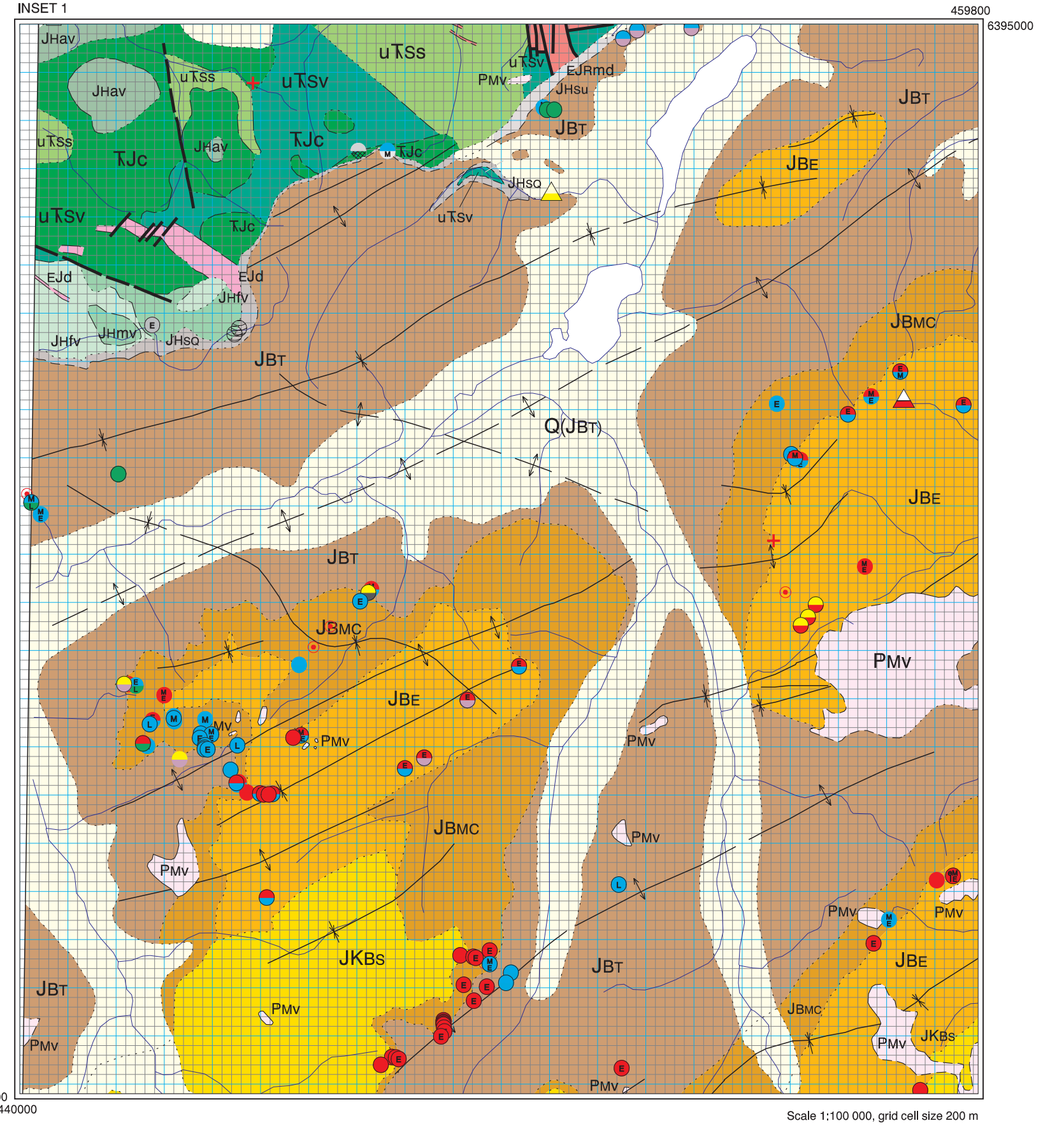
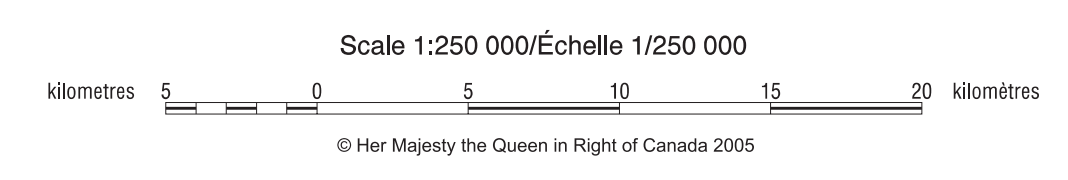


Figure 52. Fossils of the Spatsizi River map area.



NOTES
This figure shows the locations and ages of fossil collections in the Spatsizi River map area on a background of geological map units. Detailed lists of collections, an explanation of sources of data, symbols, and indices of the collections are provided in Appendix 1. The legend is condensed from GSC Map 2040A, which has descriptions of geological units and symbols.

KEY TO FOSSIL SYMBOLS

Age	Type of fossil	Level of confidence in age determination
CRETACEOUS	○ (with bar) Valanginian and younger	Solid outline - high degree
	○ Berriasian	No outline - moderate
	○ Tithonian/Volgian	
	○ Oxfordian	
Middle	○ Callovian	
	○ Bathonian	
	○ Bajocian	
Early	○ Aalenian	
	○ Toarcian	
	○ Pliensbachian	
	○ Sinemurian	
	○ Hettangian	
TRIASSIC	○ Composite symbols are read with the bottom representing the lower age limit and the top representing the upper age limit. Lower case e, n, and l are used to qualify series identifiers, which are indicated with upper case E, M, and L. The Cretaceous stages are represented with the first three letters of the stage name.	
PERMIAN	○ Example: The following symbol denotes a macrofossil of late Oxfordian to Kimmeridgian age. This age has been assigned with a high degree of confidence.	
CARBONIFEROUS		

CONDENSED LEGEND

QUATERNARY	PLEISTOCENE AND RECENT	PLEISTOCENE
TERTIARY	PLIOCENE	MIDLAND VOLCANICS
CRETACEOUS	UPPER LOWER AND UPPER CRETACEOUS	APTIAN OR ALBIAN TO CAMPANIAN AND MAASTRICHTIAN
JURASSIC	UPPER JURASSIC AND LOWER CRETACEOUS	UPPER JURASSIC AND LOWER CRETACEOUS
MIDDLE JURASSIC	LOWER JURASSIC	LOWER JURASSIC
LOWER MIDDLE JURASSIC	LOWER MIDDLE JURASSIC	LOWER MIDDLE JURASSIC
EARLY JURASSIC	EARLY JURASSIC	EARLY JURASSIC
TRIASSIC	TRIASSIC	TRIASSIC
PERMIAN	PERMIAN	PERMIAN
CARBONIFEROUS	CARBONIFEROUS	CARBONIFEROUS