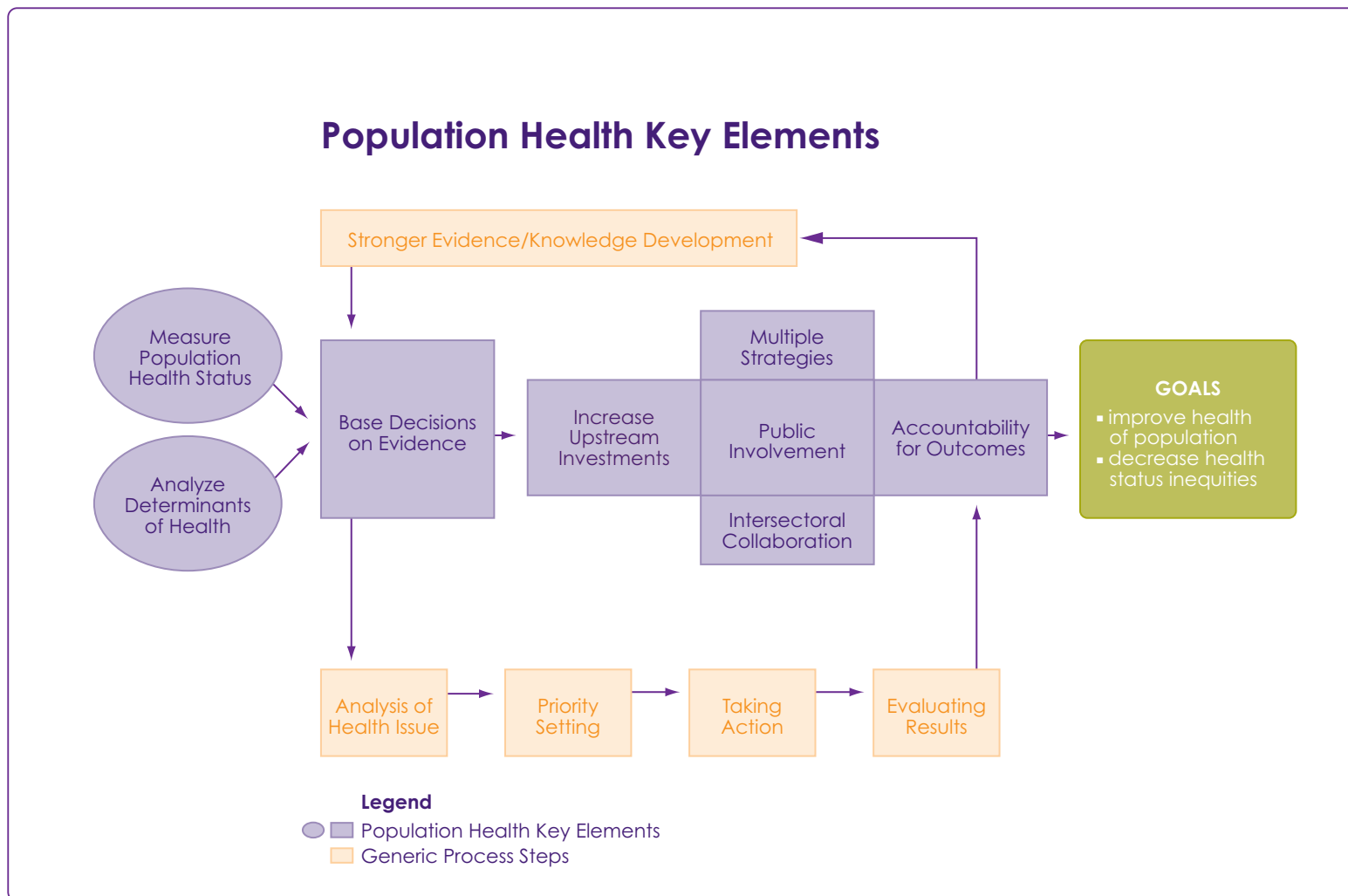




# THE POPULATION HEALTH TEMPLATE:

## Key Elements and Actions that Define A Population Health Approach



*(please see reverse for details)*

See the Population Health Template at [www.population-health.com](http://www.population-health.com)



# THE POPULATION HEALTH TEMPLATE:

## Key Elements and Actions that Define A Population Health Approach

### Focus on the Health of Populations:

Population health assesses health status and health status inequities over the lifespan at the population level.

- Determine indicators for measuring health status
- Measure and analyze health status to identify health issues
- Assess contextual conditions, characteristics and trends

### Address the Determinants of Health and Their Interactions:

Population health measures and analyzes the full spectrum of determinants — and their interactions — known to influence and contribute to health.

- Determine indicators for measuring determinants of health
- Measure and analyze the determinants of health and their interactions to link health issues to their determinants

### Base Decisions on Evidence:

Evidence on health status, the determinants of health and the effectiveness of interventions is used to assess health, identify priorities and develop strategies to improve health.

- Use best evidence available at all stages of policy and program development
- Explain criteria for including or excluding evidence
- Draw on a variety of data
- Generate data through mixed research methods
- Identify and assess interventions for effectiveness
- Disseminate research findings and facilitate policy uptake

### Apply Multiple Strategies:

Population health integrates activities across a wide range of interventions, from health care to prevention, protection, health promotion and action on the determinants of health.

- Identify scope
- Take action on determinants of health and interactions
- Implement strategies to reduce inequities in health status
- Apply a mix of interventions
- Address health issues in an integrated way
- Work across the life span
- Act in multiple settings
- Establish a coordinating mechanism

### Employ Mechanisms for Public Involvement:

Citizens are provided opportunities to contribute to the development of health priorities and the review of health-related outcomes.

- Capture the public's interest
- Contribute to health literacy
- Apply public involvement strategies that link to overarching purpose

### Collaborate Across Sectors and Levels:

Population health calls for shared responsibility and accountability for health outcomes with sectors and levels whose activities directly or indirectly impact on health or the factors known to influence it.

- Established shared values and purpose
- Establish concrete objectives
- Identify and support a champion
- Generate political support
- Share leadership, accountability and rewards

### Increase Upstream Investments:

The potential for improved population health is maximized by directing increased efforts and investments 'upstream' to maintain health and address the root causes of health and illness.

- Apply criteria to select priorities for investment
- Balance short and long term investments
- Influence investments in other sectors

### Demonstrate Accountability for Health Outcomes:

Population health focuses on health outcomes and determining the degree of change that can actually be attributed to interventions.

- Construct a results-based accountability framework
- Determine baseline measures and set targets
- Institutionalize effective evaluation systems
- Promote the use of health impact assessment tools
- Publicly report results and facilitate knowledge uptake

*(please see reverse for diagram)*

See the Population Health Template at  
[www.population-health.com](http://www.population-health.com)

