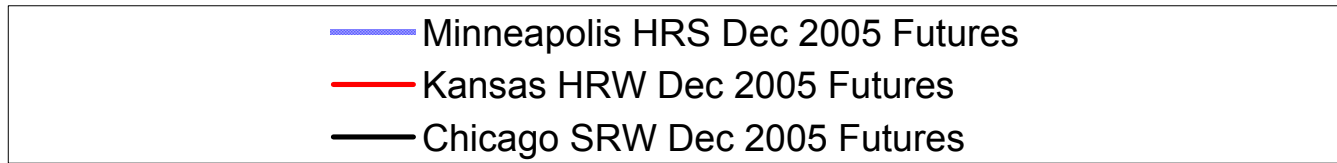
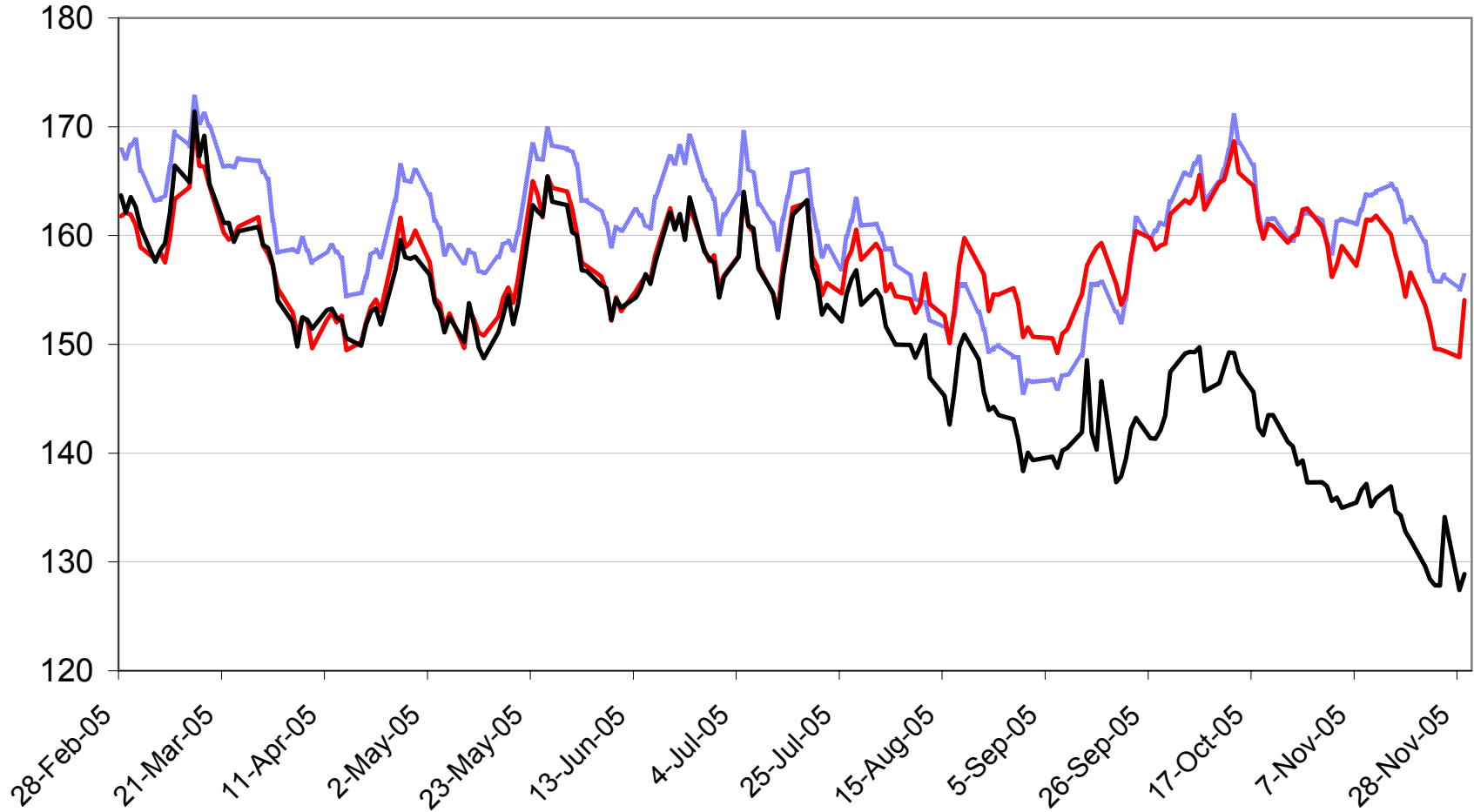


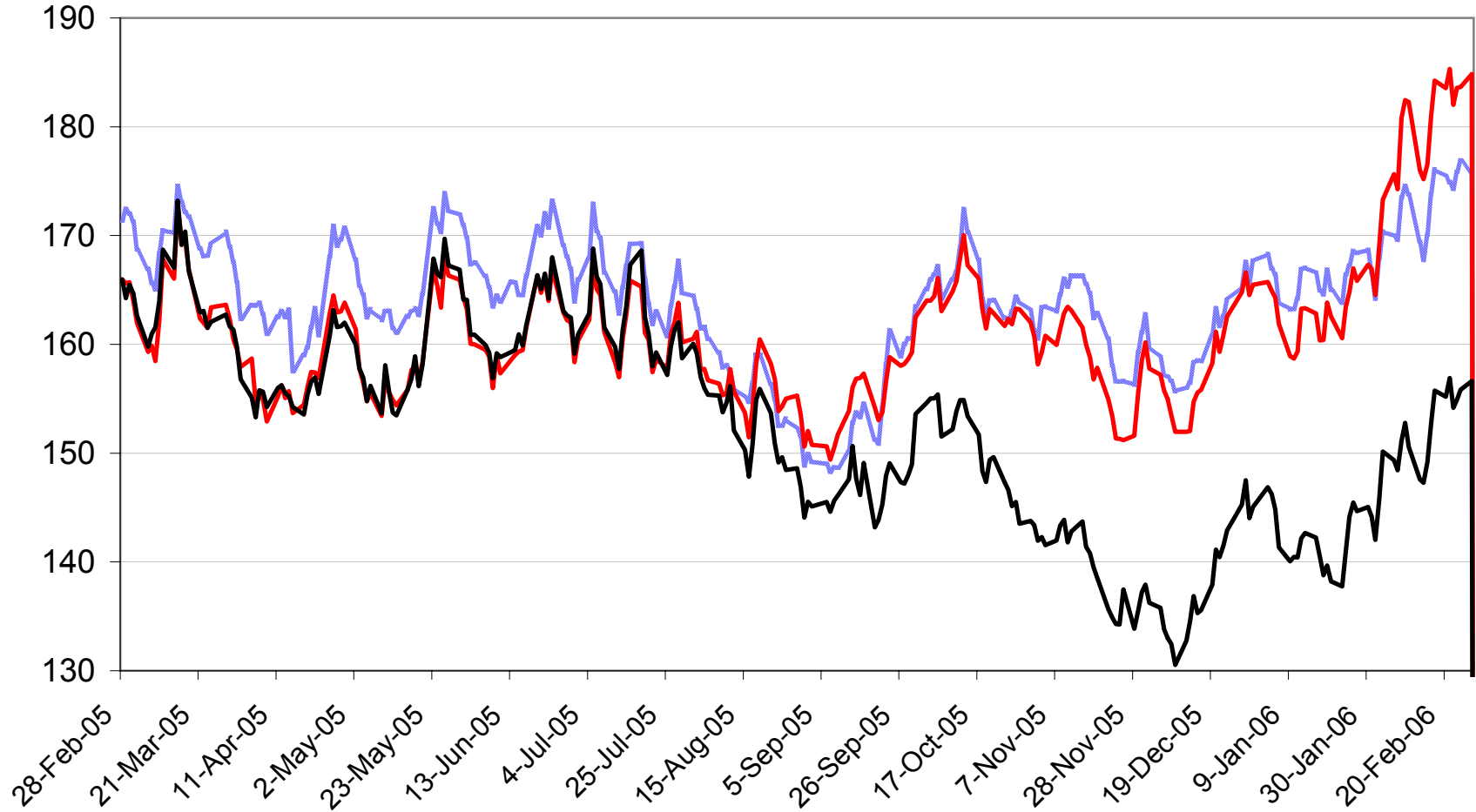
December 2005 Wheat Futures

\$Cdn/tonne



March 2006 Wheat Futures

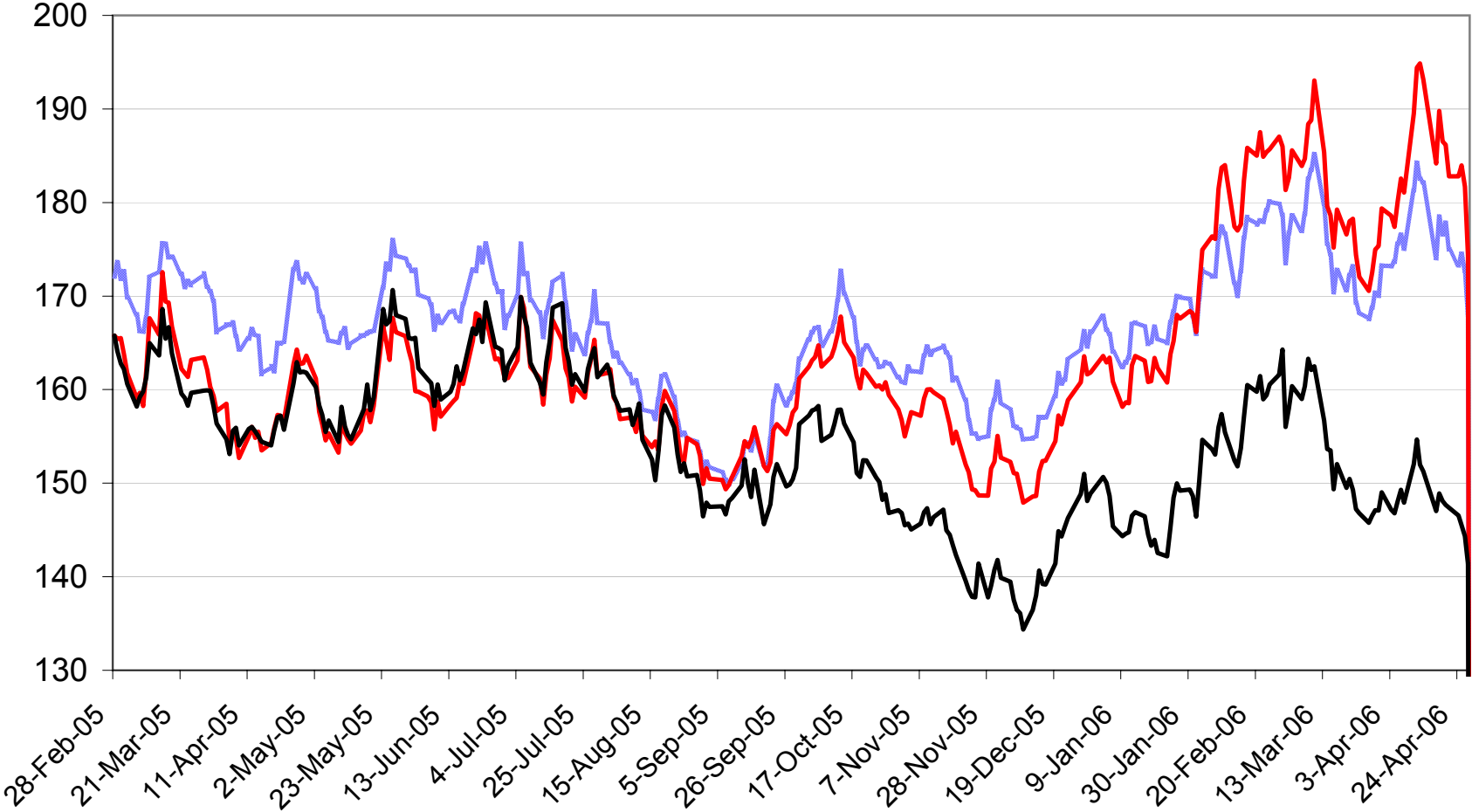
\$Cdn/tonne



- Minneapolis HRS March 2006 Futures
- Kansas HRW March 2006 Futures
- Chicago SRW March 2006 Futures

May 2006 Wheat Futures

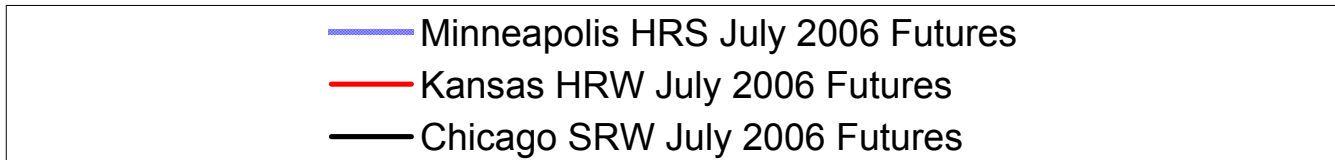
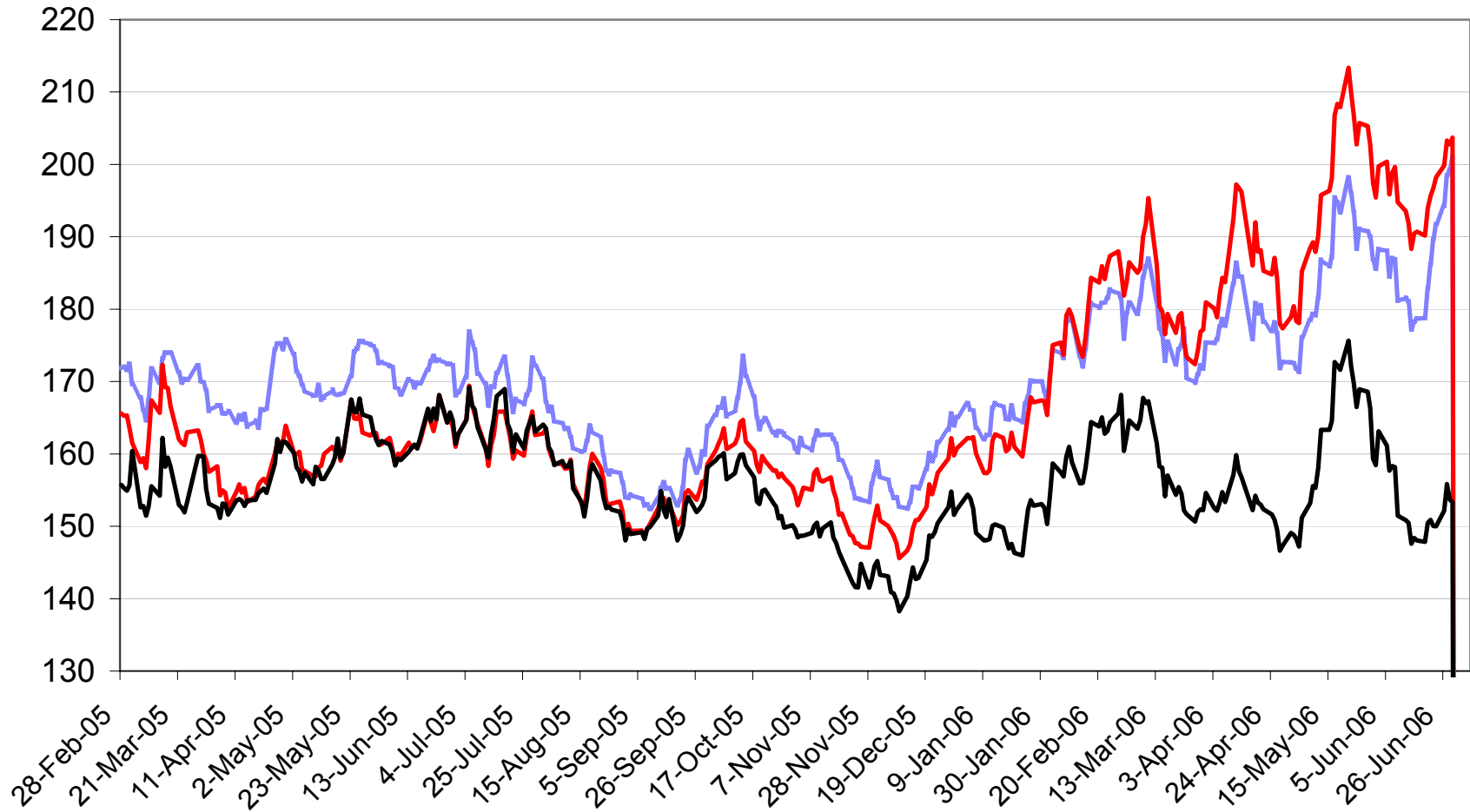
\$Cdn/tonne



- Minneapolis HRS May 2006 Futures
- Kansas HRW May 2006 Futures
- Chicago SRW May 2006 Futures

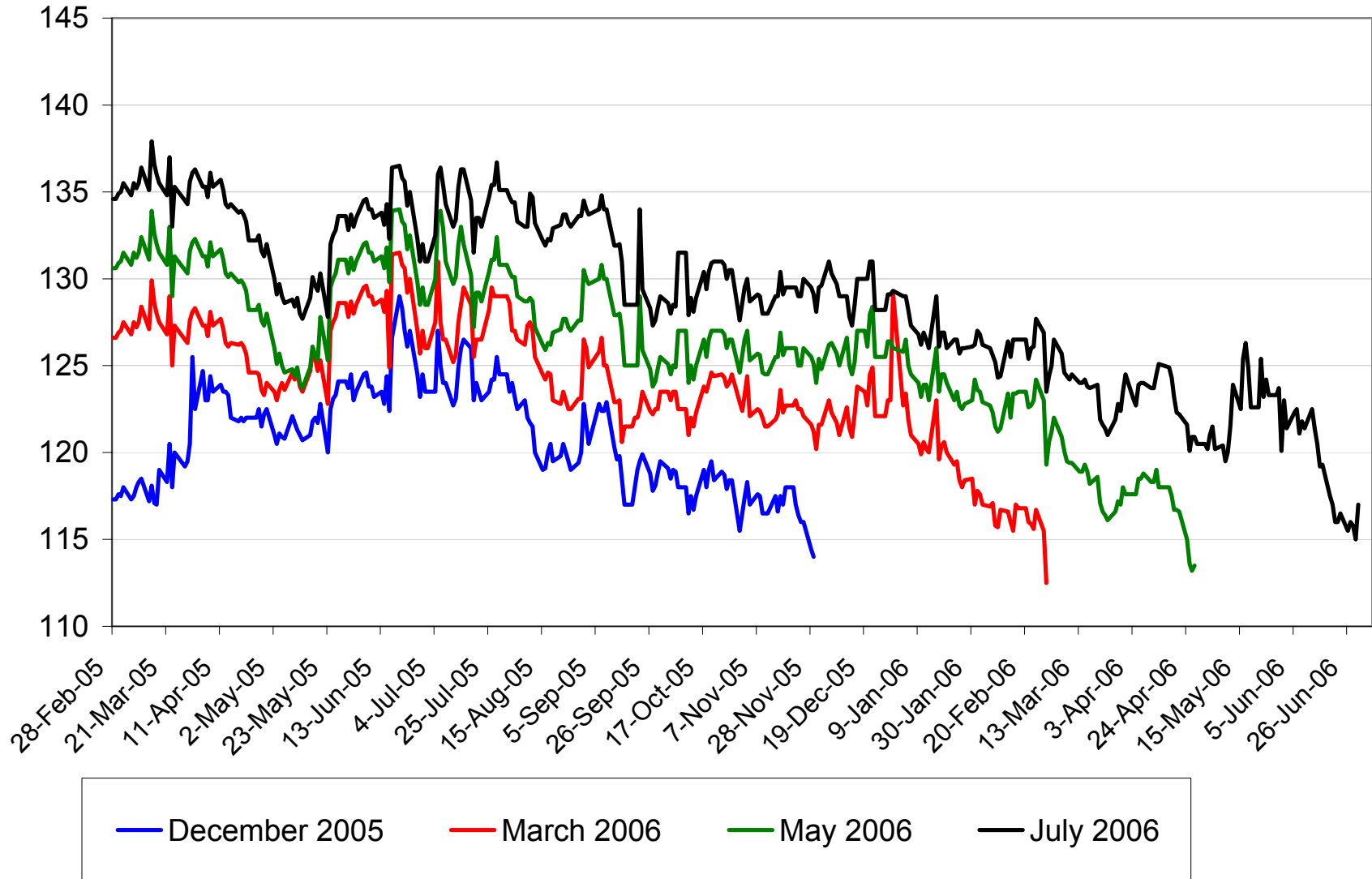
July 2006 Wheat Futures

\$Cdn/tonne



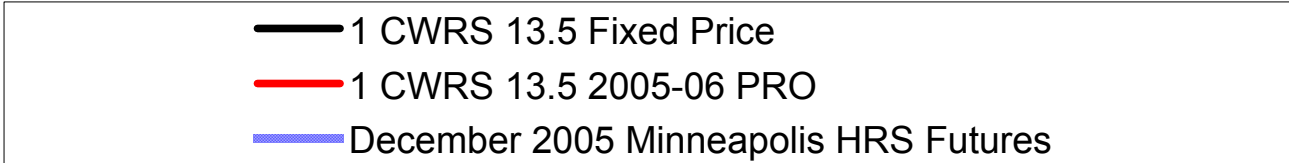
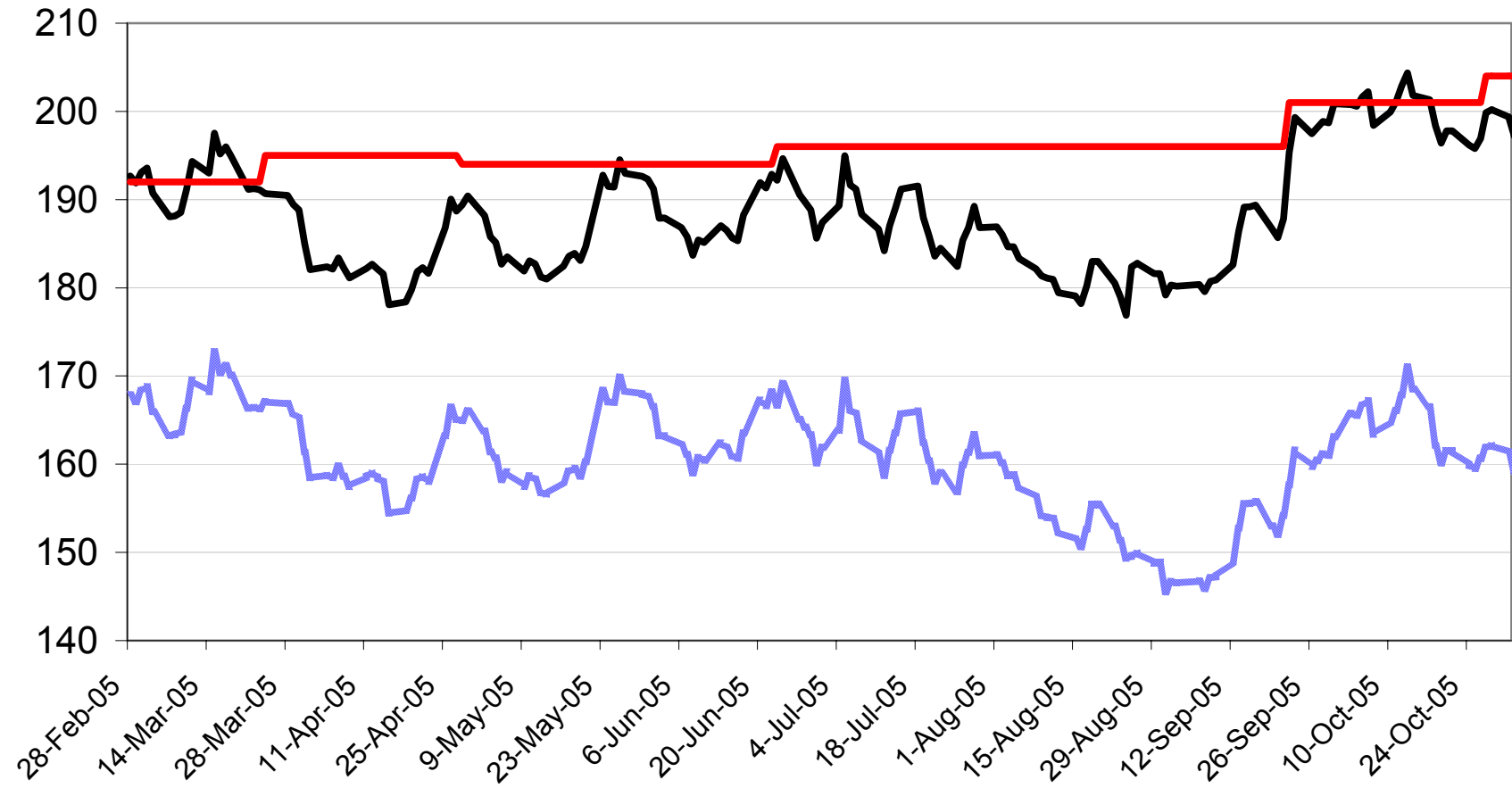
Winnipeg Western Barley Futures

\$Cdn/tonne



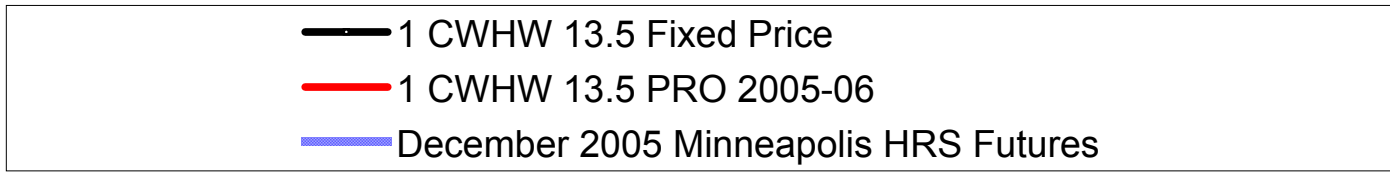
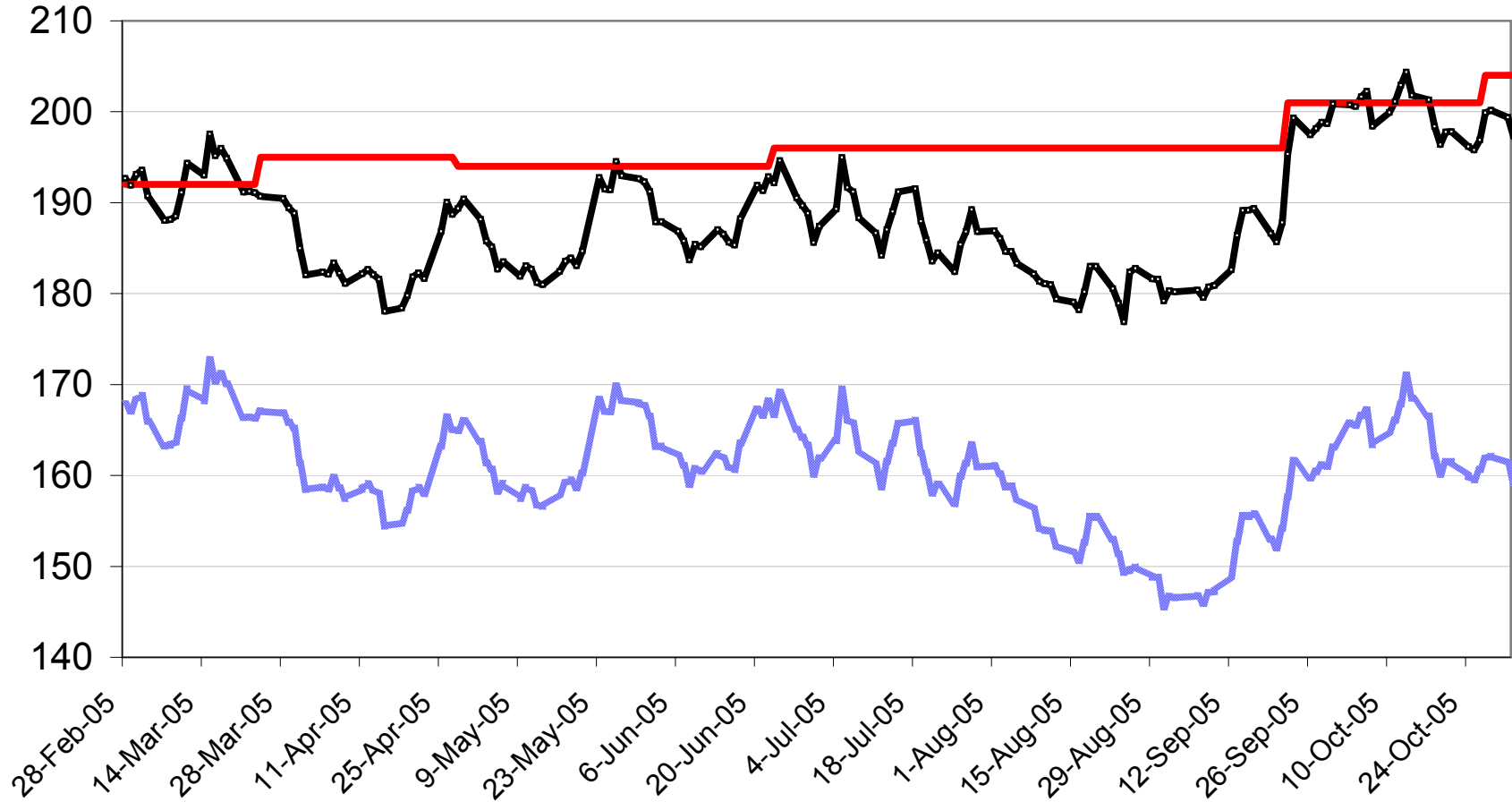
2005-06 No.1 CWRS 13.5 Fixed Price

\$Cdn/tonne



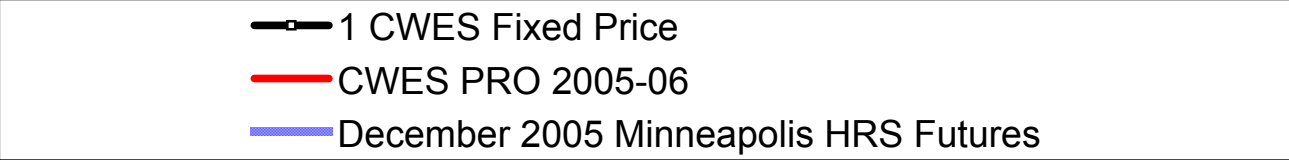
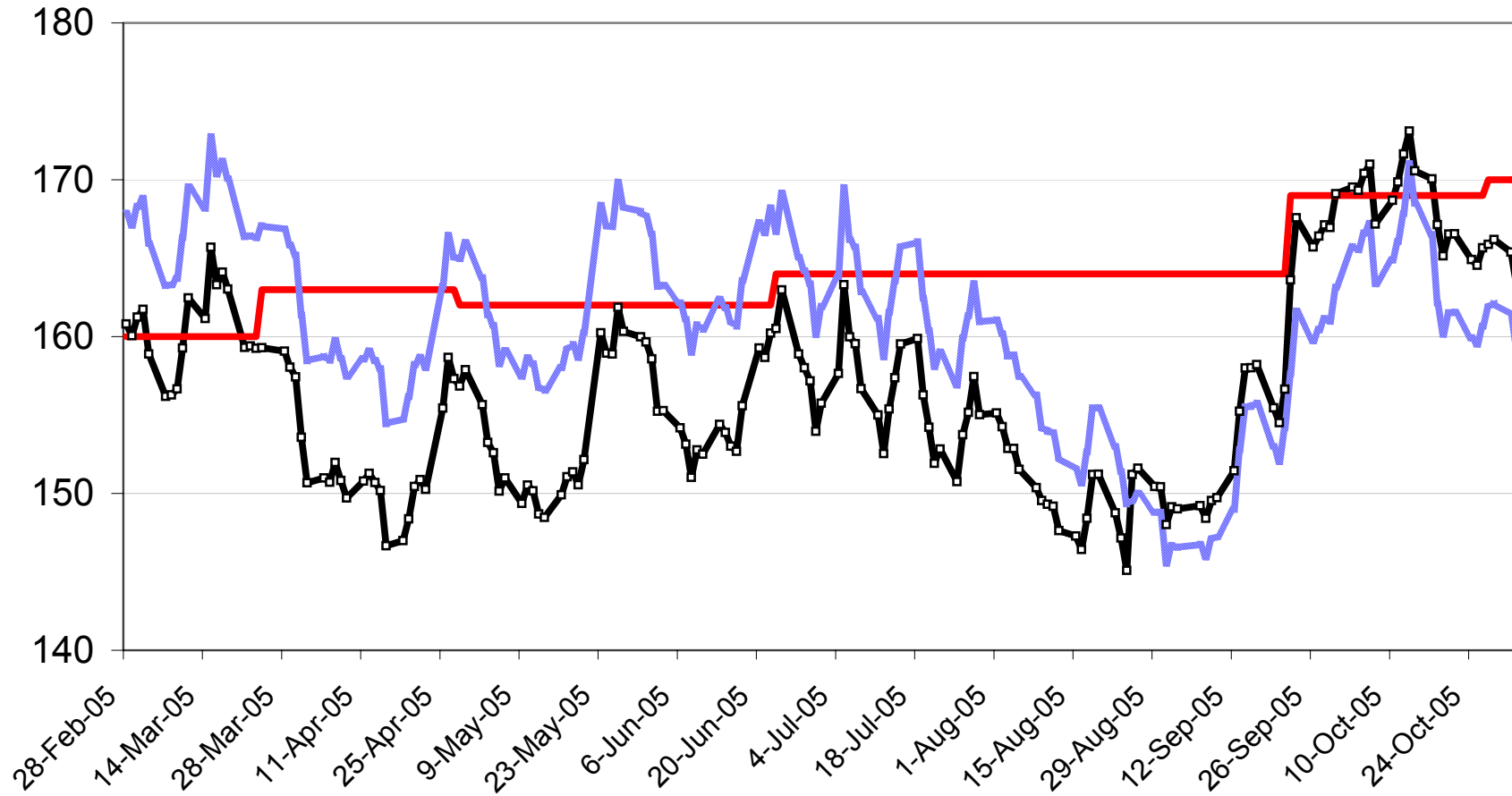
2005-06 No. 1 CWHW 13.5 Fixed Price

\$Cdn/tonne



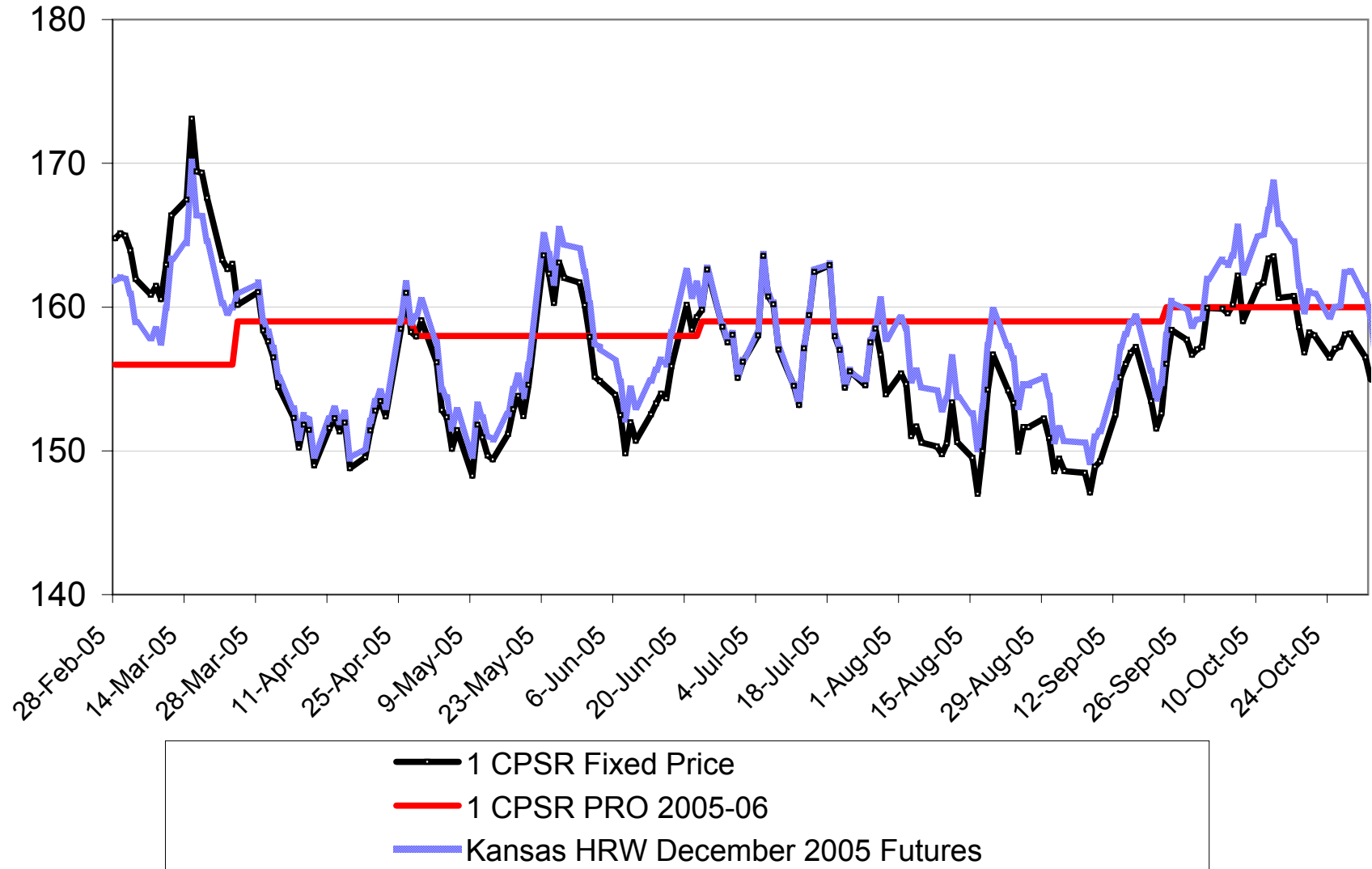
2005-06 No.1 CWES Fixed Price

\$Cdn/tonne



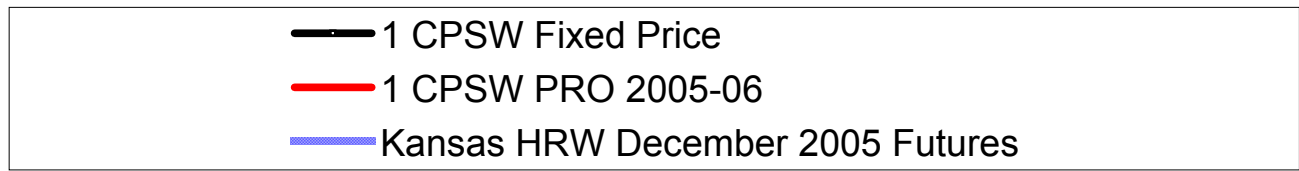
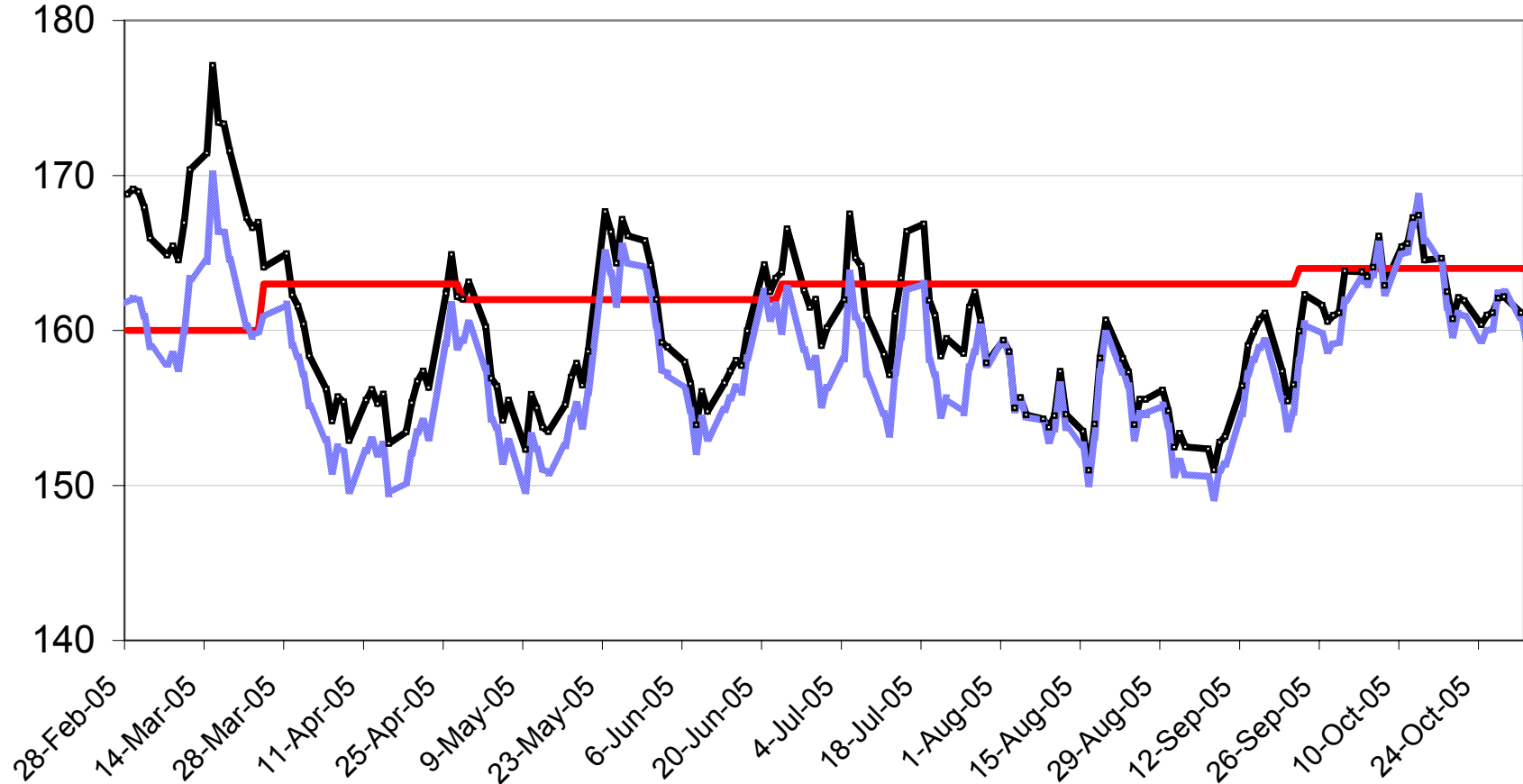
2005-06 No. 1 CPSR Fixed Price

\$Cdn/tonne



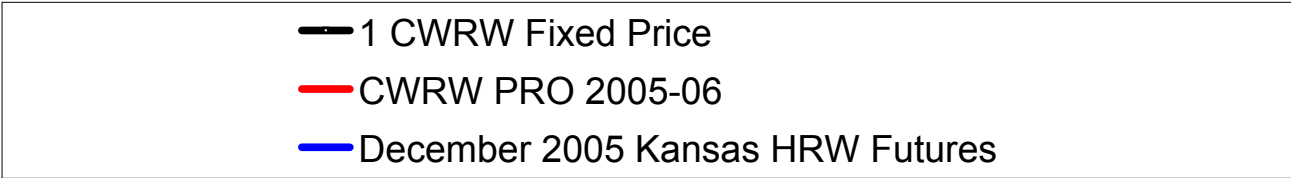
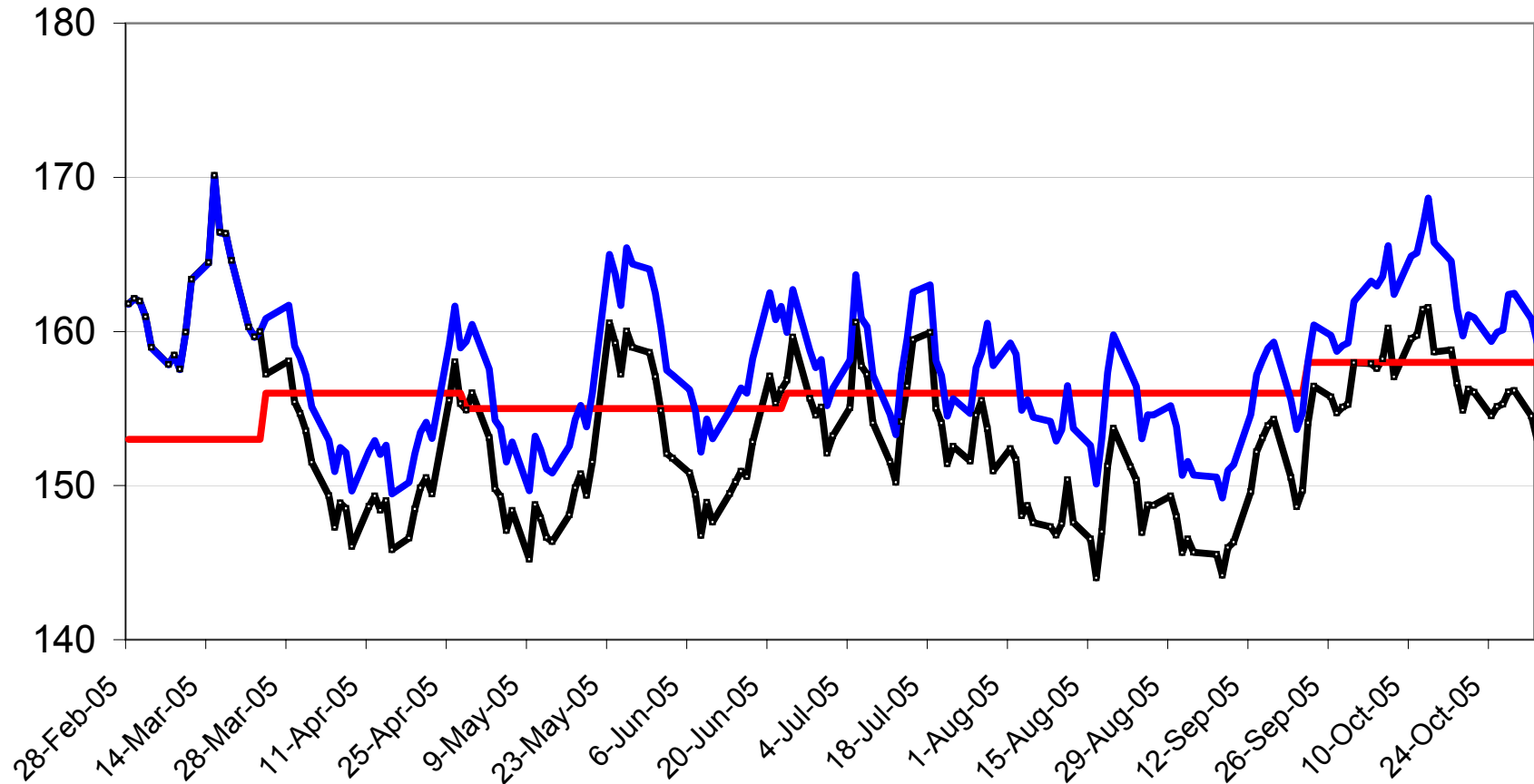
2005-06 No. 1 CPSW Fixed Price

\$Cdn/tonne



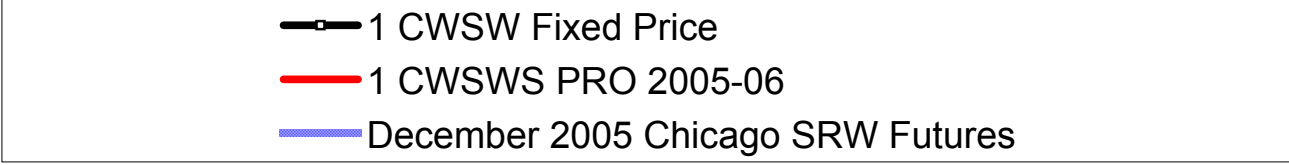
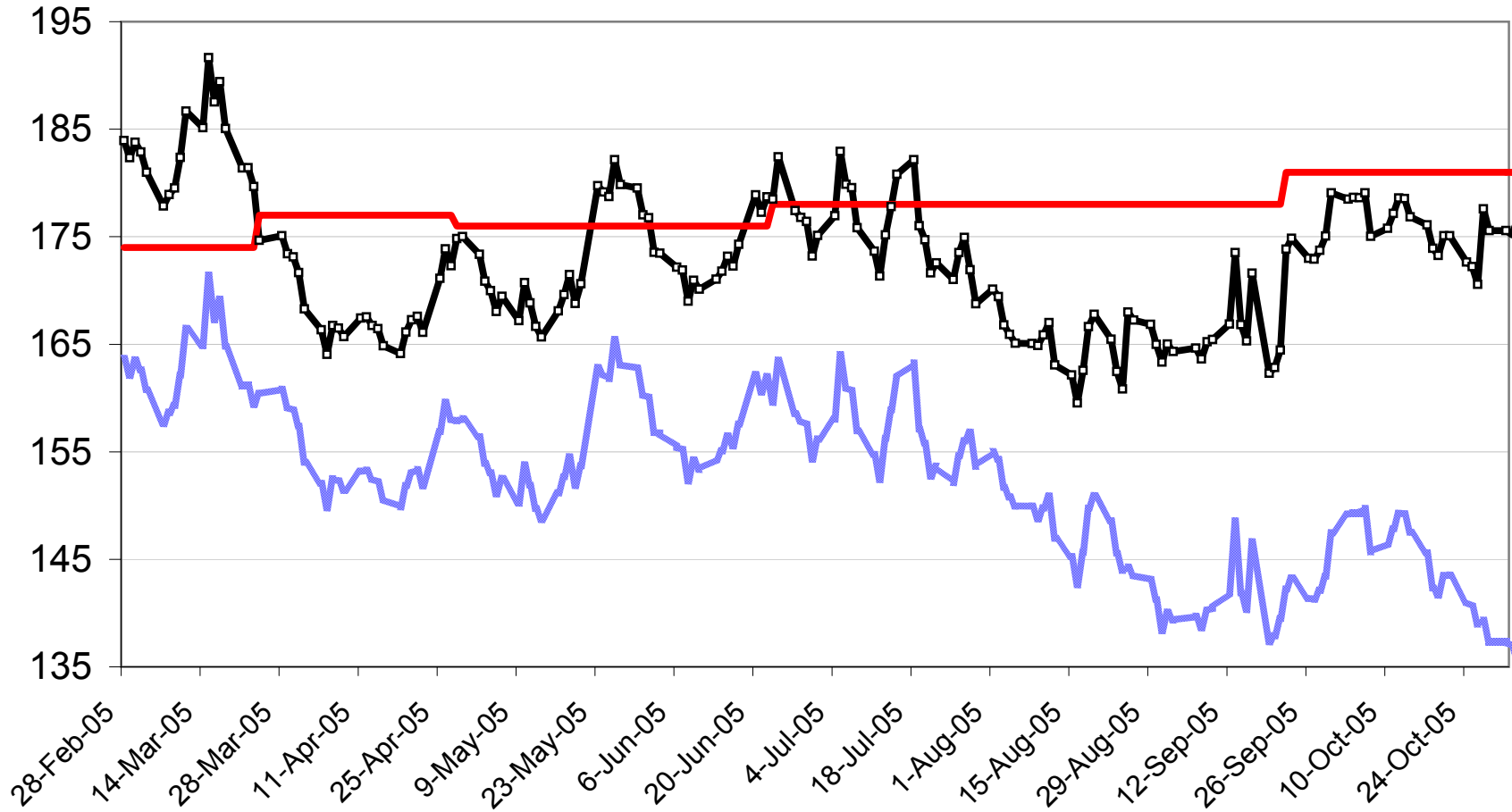
2005-06 No. 1 CWRW Fixed Price

\$Cdn/tonne



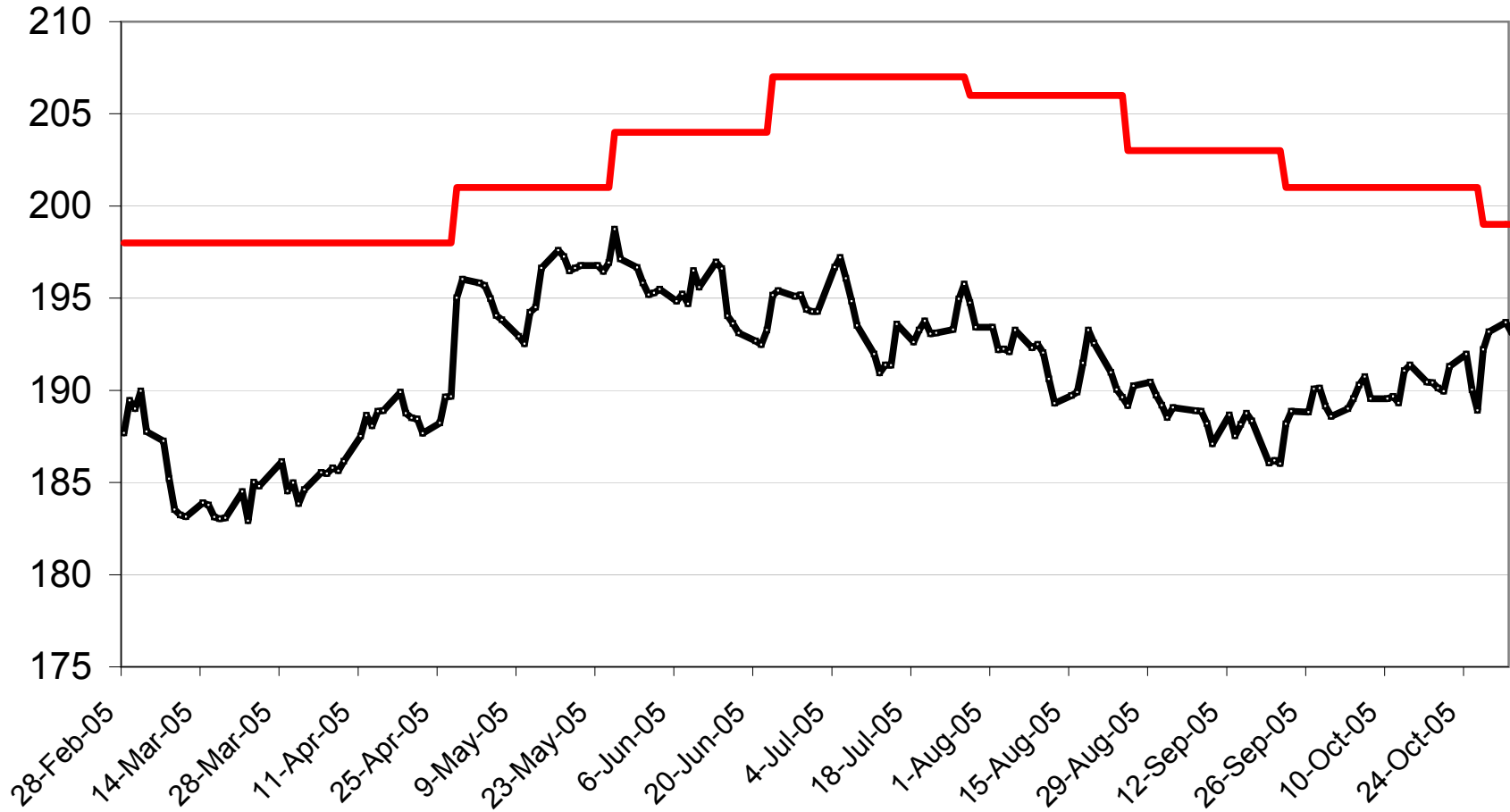
2005-06 No. 1 CWSWS Fixed Price

\$Cdn/tonne



2005-06 No. 1 CWAD 13.0 Fixed Price

\$Cdn/tonne

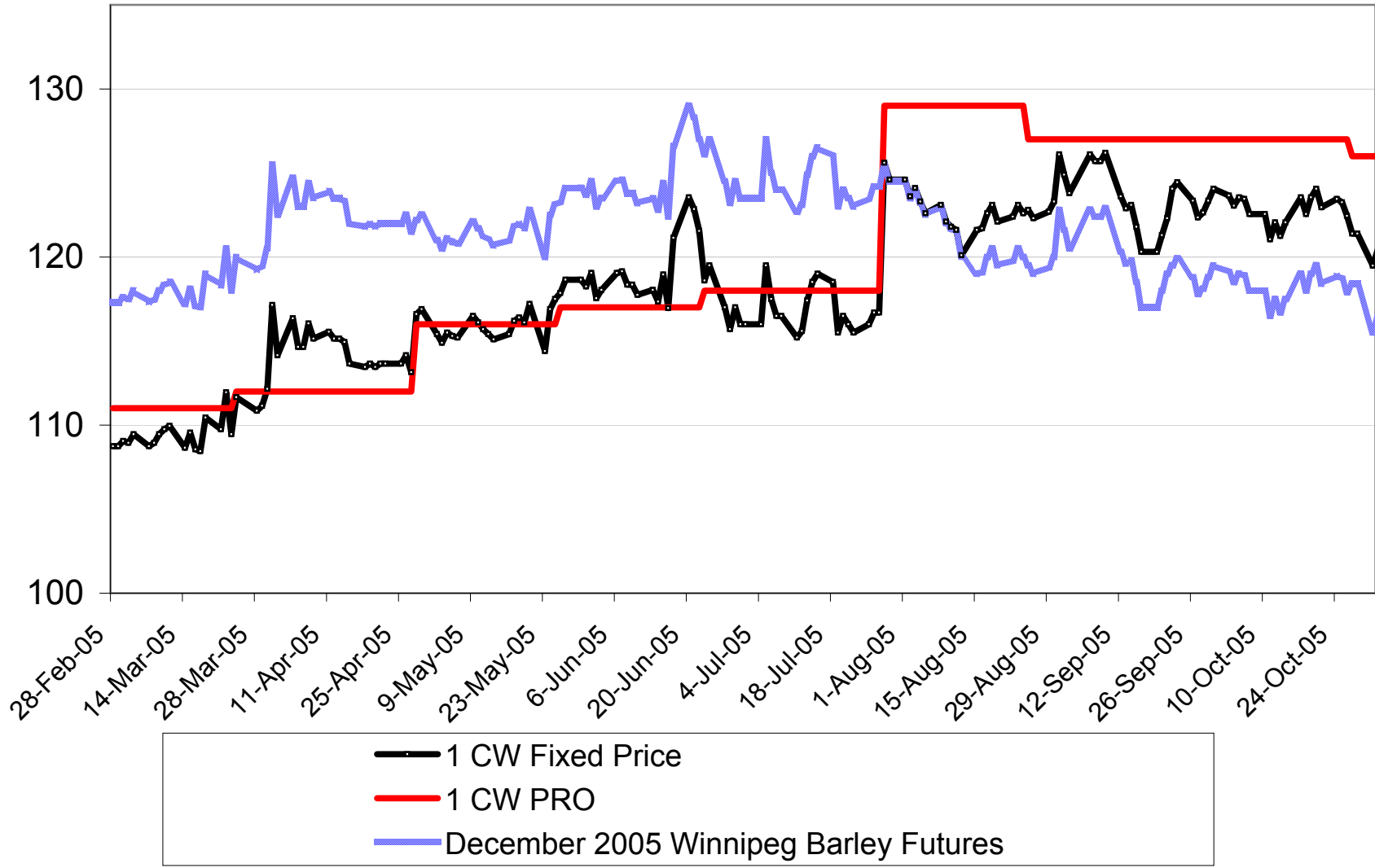


— 1 CWAD 13.0 Fixed Price

— 1 CWAD 13.0 2005-06 PRO

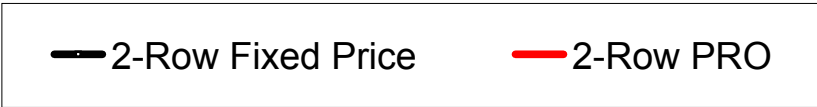
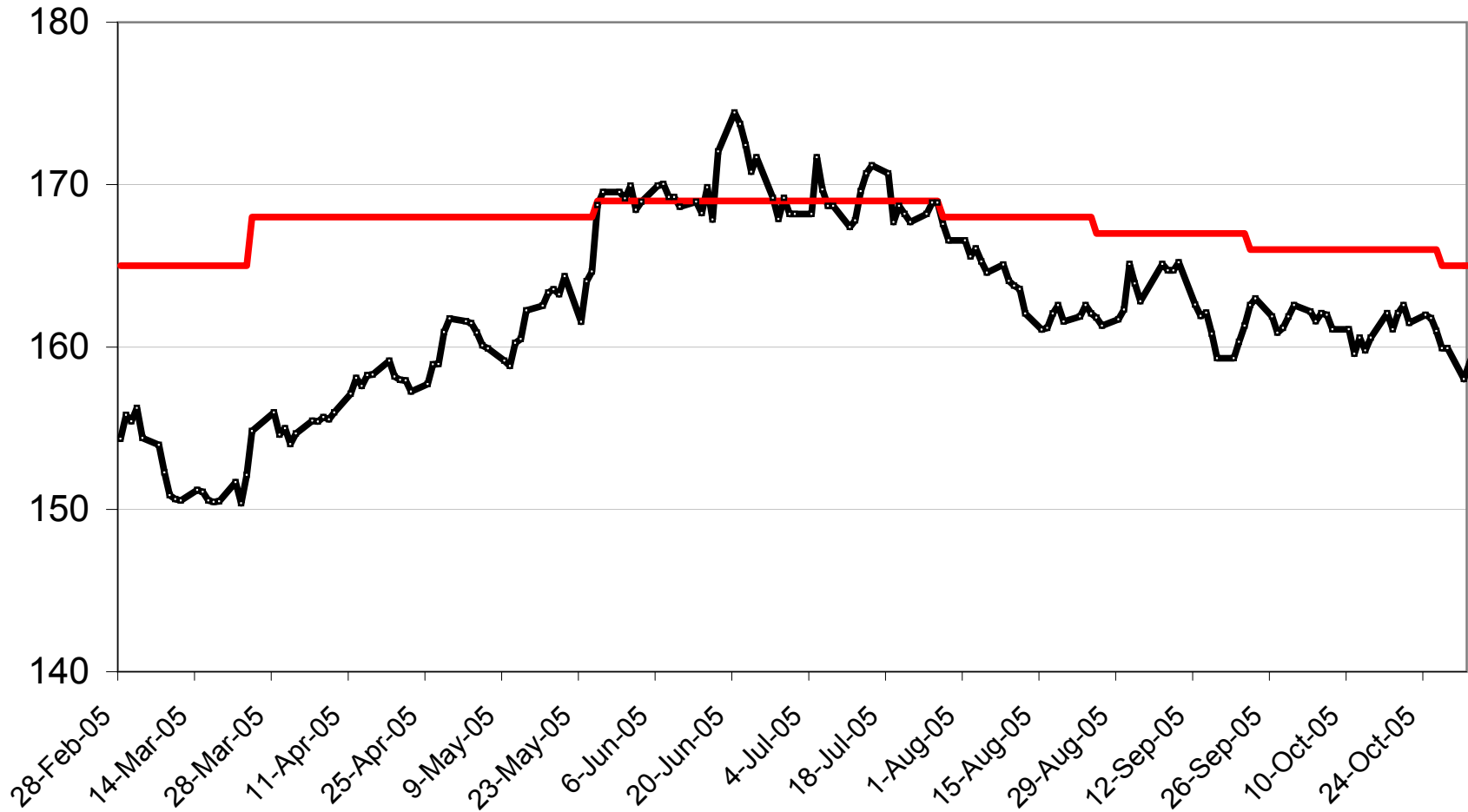
2005-06 No. 1 CW Barley Fixed Price

\$Cdn/tonne



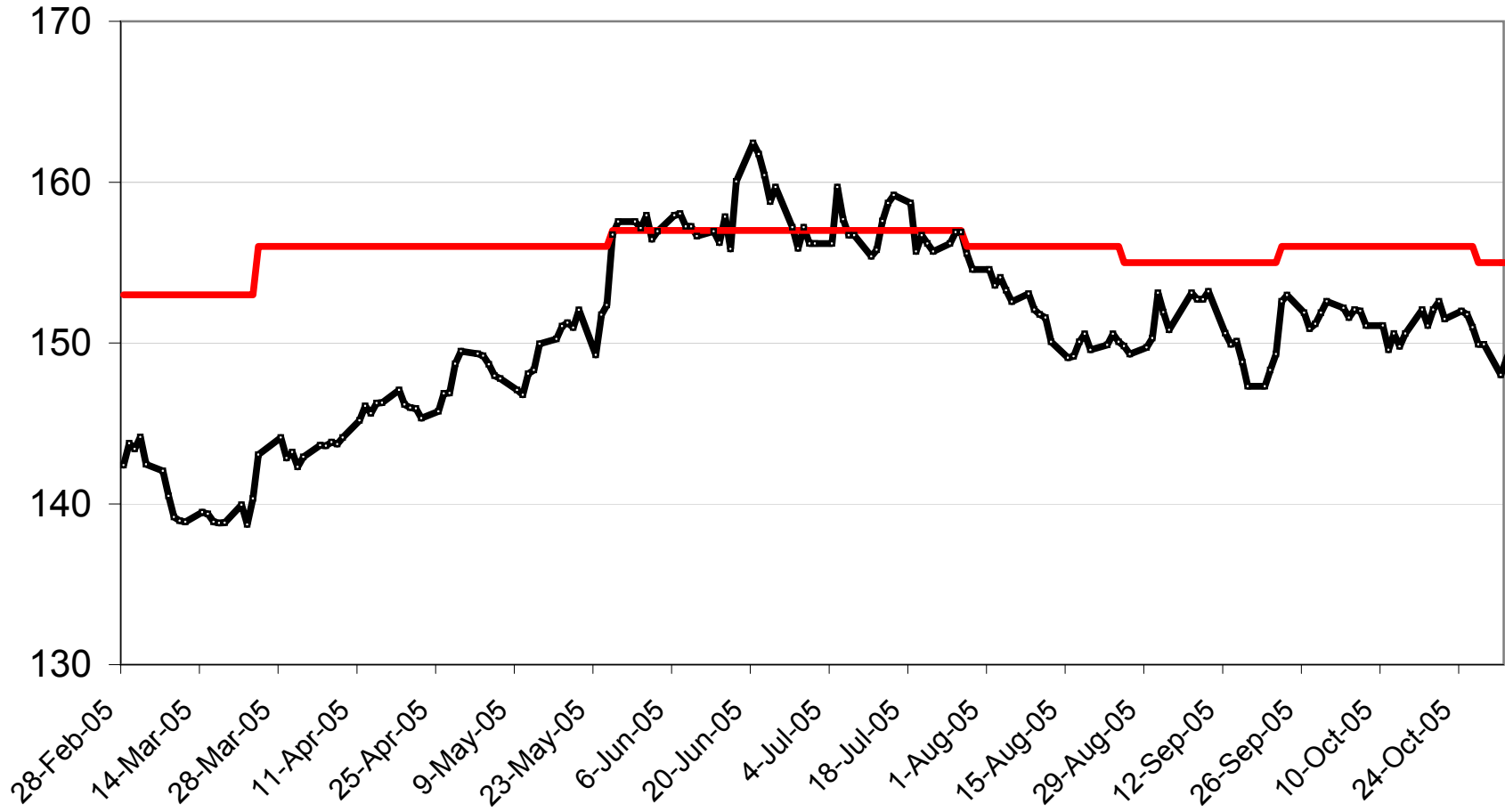
2005-06 Std Sel Two-Row Fixed Price

\$Cdn/tonne



2005-06 Std Sel Six-Row Fixed Price

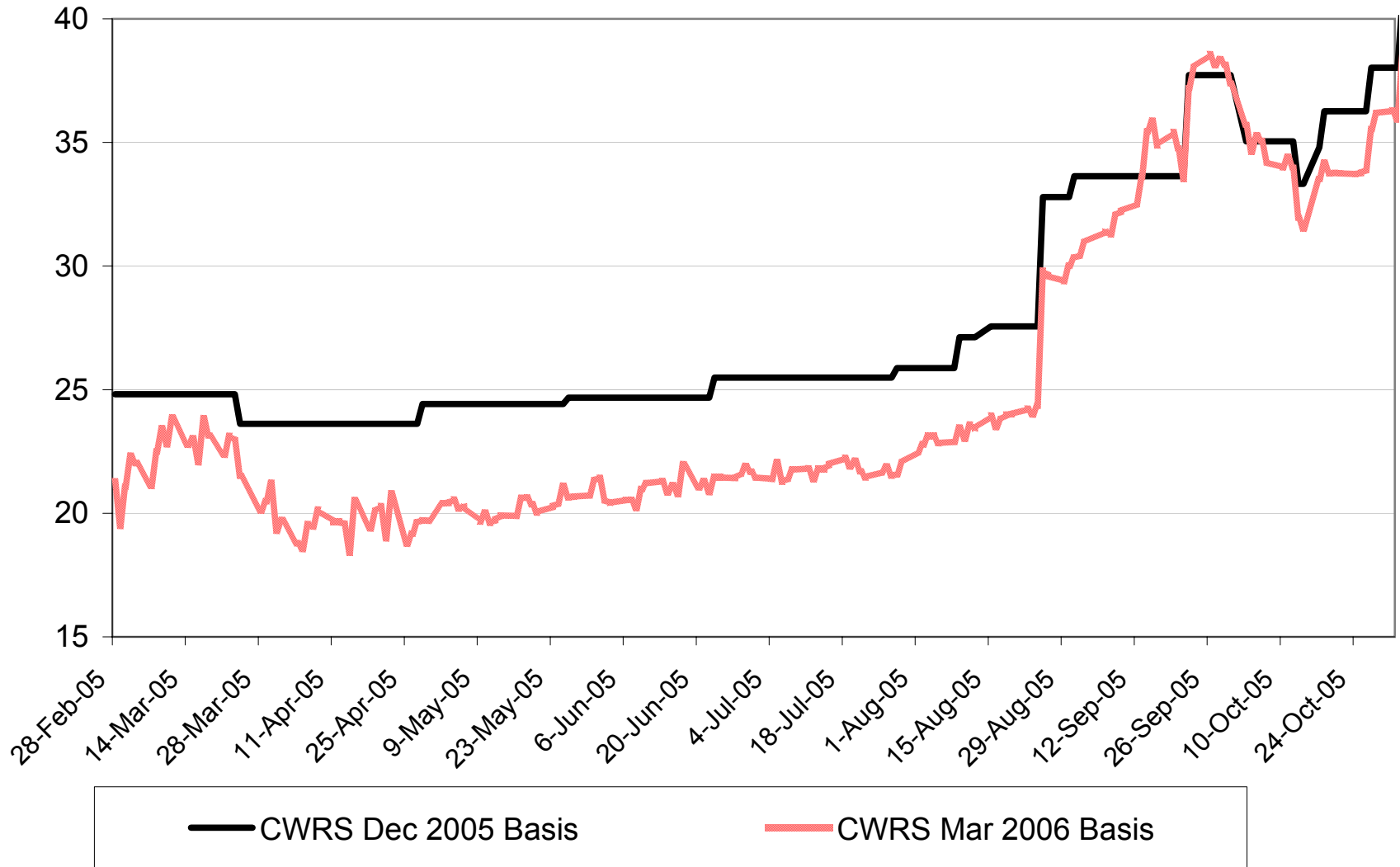
\$Cdn/tonne



2005-06 No. 1 CWRS 13.5 Basis Levels

\$Cdn/tonne

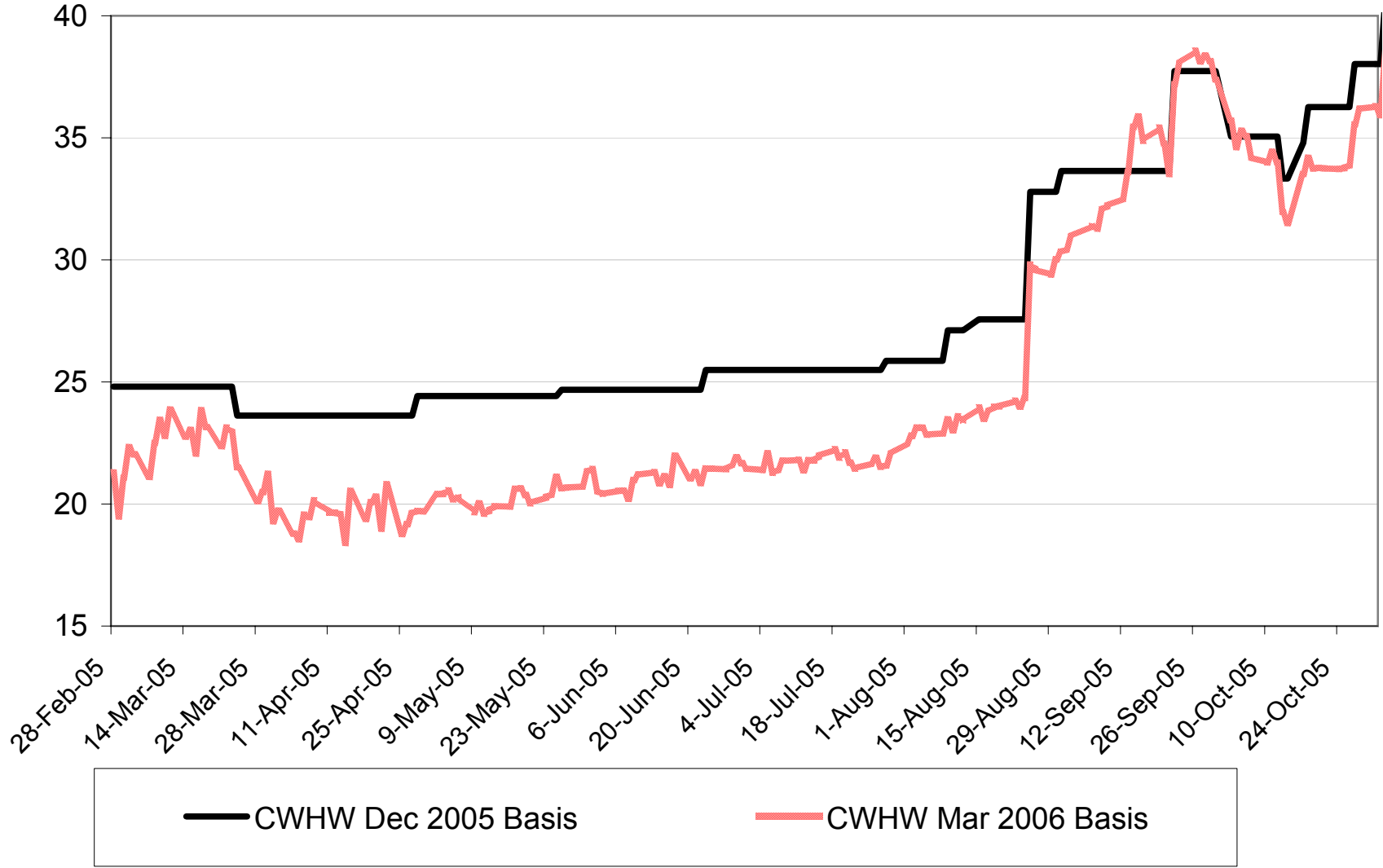
\$ per tonne above Minn HRS Futures



2005-06 No. 1 CWHW 13.5 Basis Levels

\$Cdn/tonne

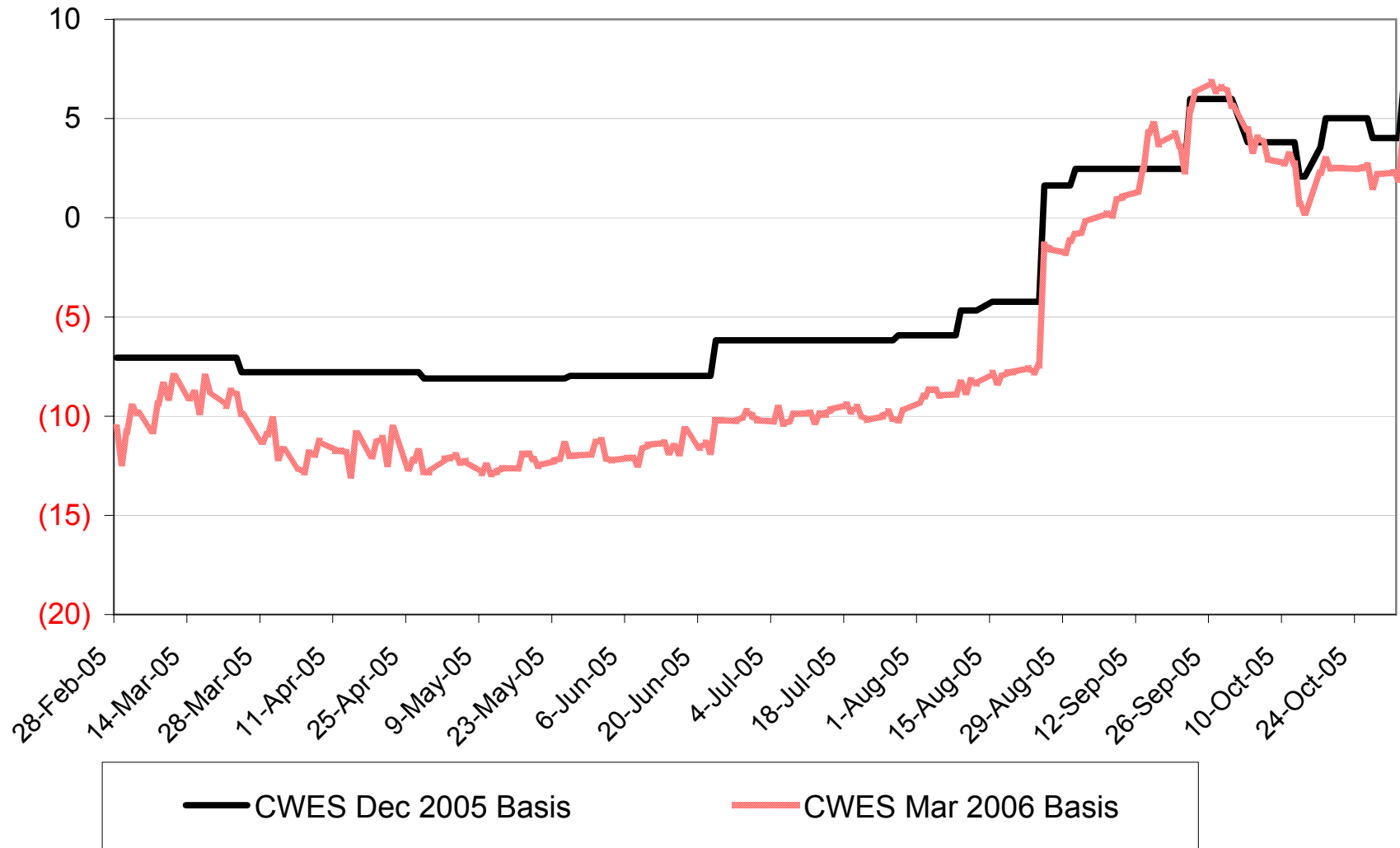
\$ per tonne above Minn HRS Futures



2005-06 No. 1 CWES Basis Levels

\$ per tonne below Minn HRS Futures

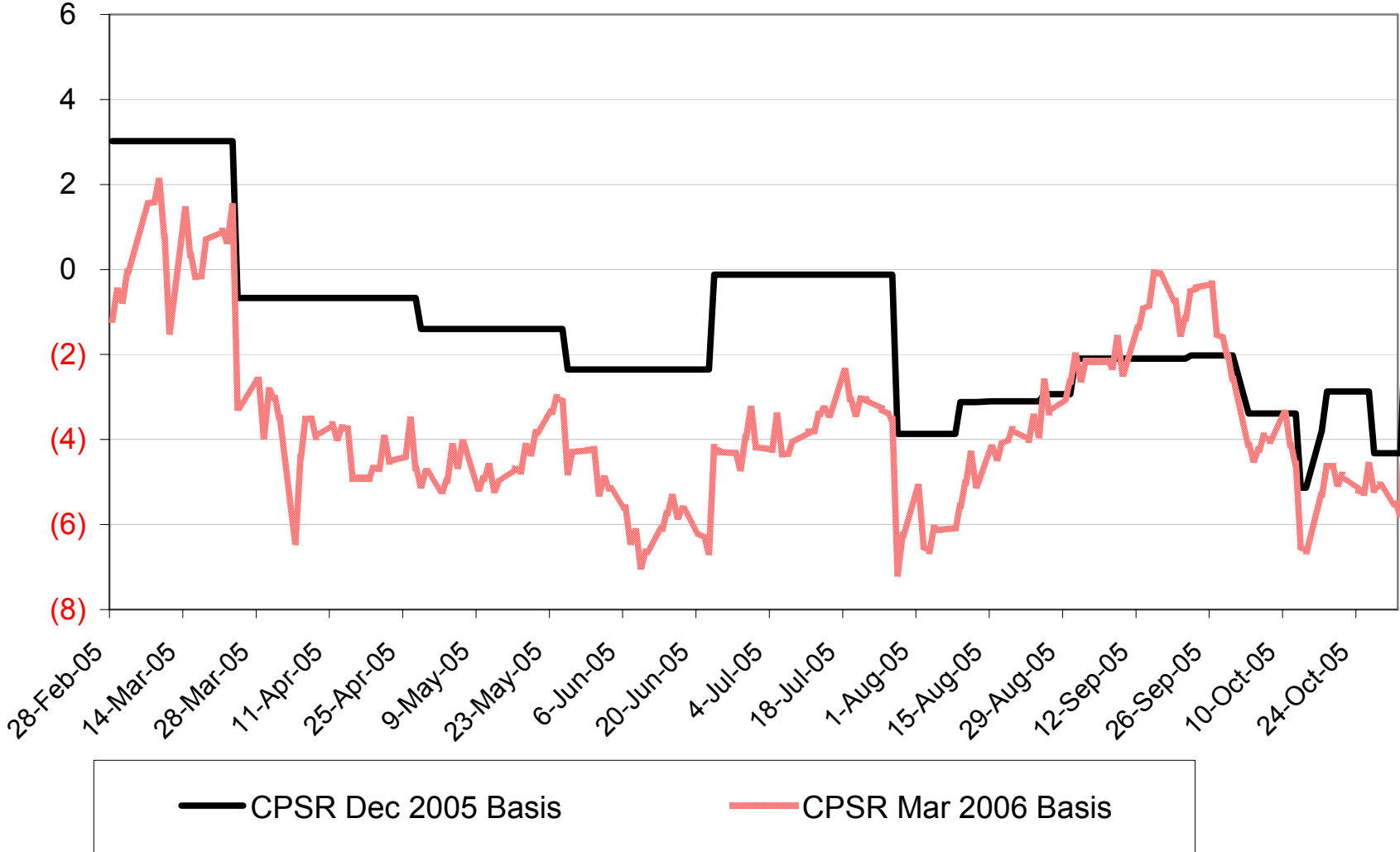
\$Cdn/tonne



2005-06 No. 1 CPSR Basis Levels

\$ per tonne below Kansas HRW Futures

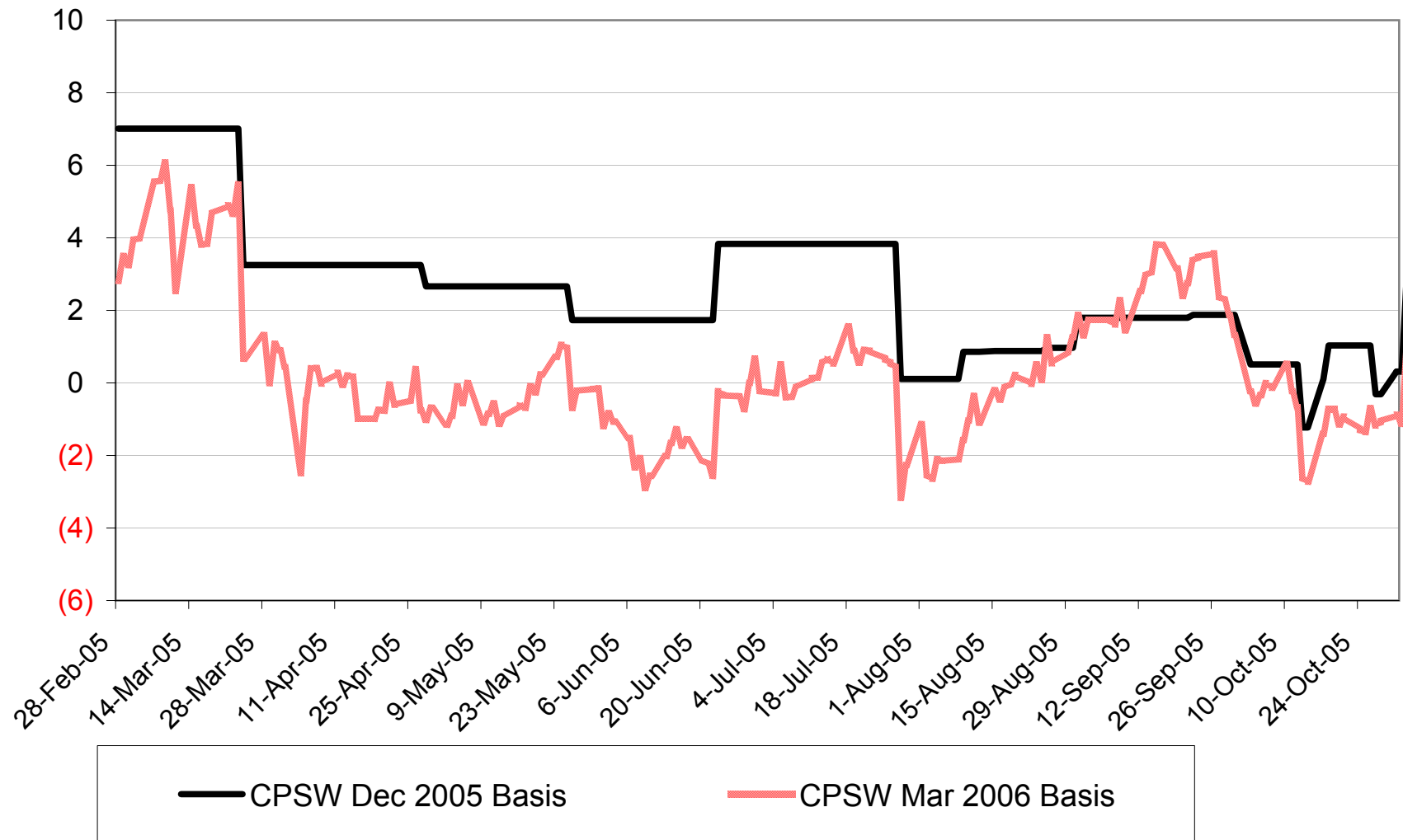
\$Cdn/tonne



2005-06 No. 1 CPSW Basis Levels

\$ per tonne below Kansas HRW Futures

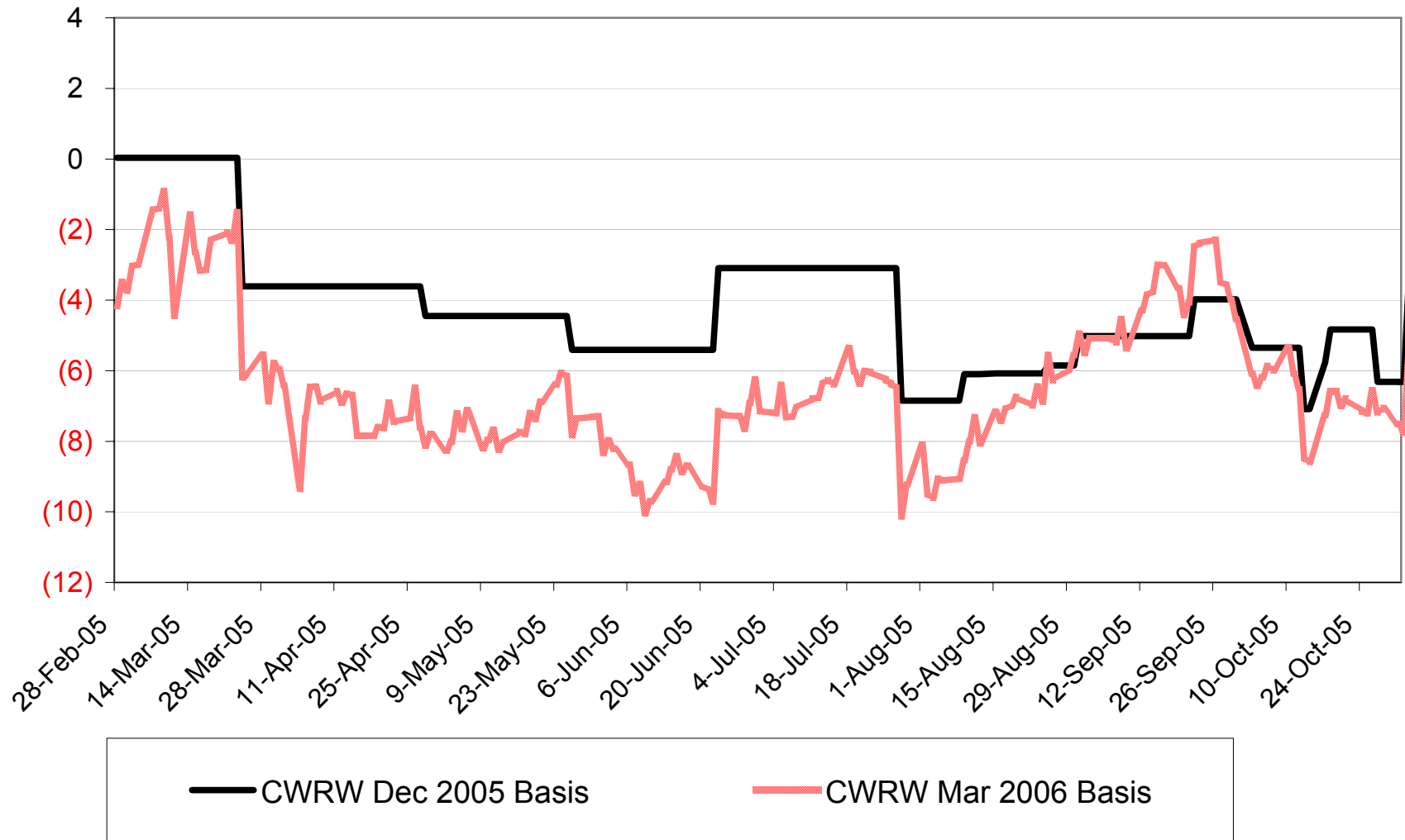
\$Cdn/tonne



2005-06 No. 1 CWRW Basis Levels

\$ per tonne below Kansas HRW Futures

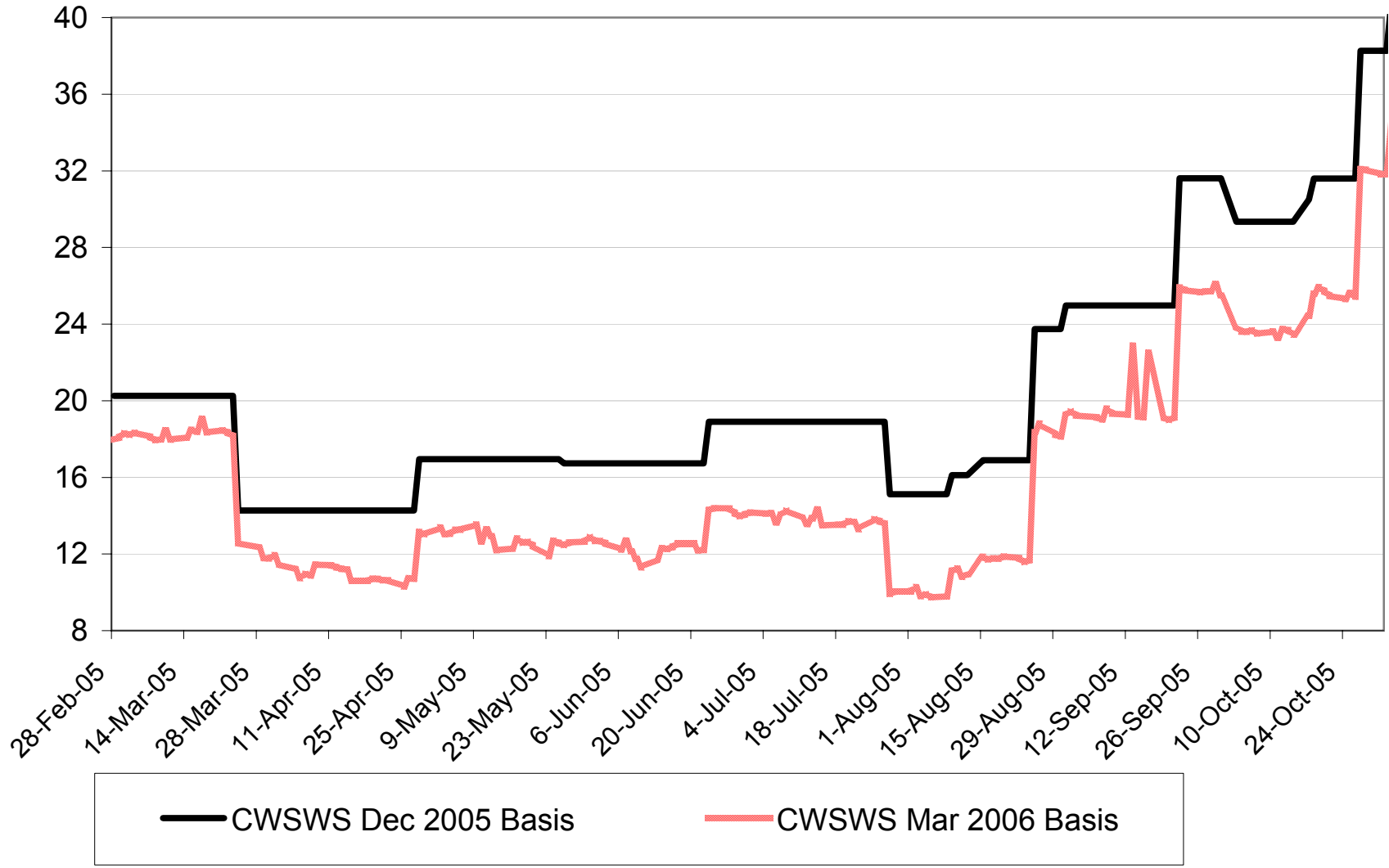
\$Cdn/tonne



2005-06 No. 1 CWSWS Basis Levels

\$ per tonne above Chicago SRW Futures

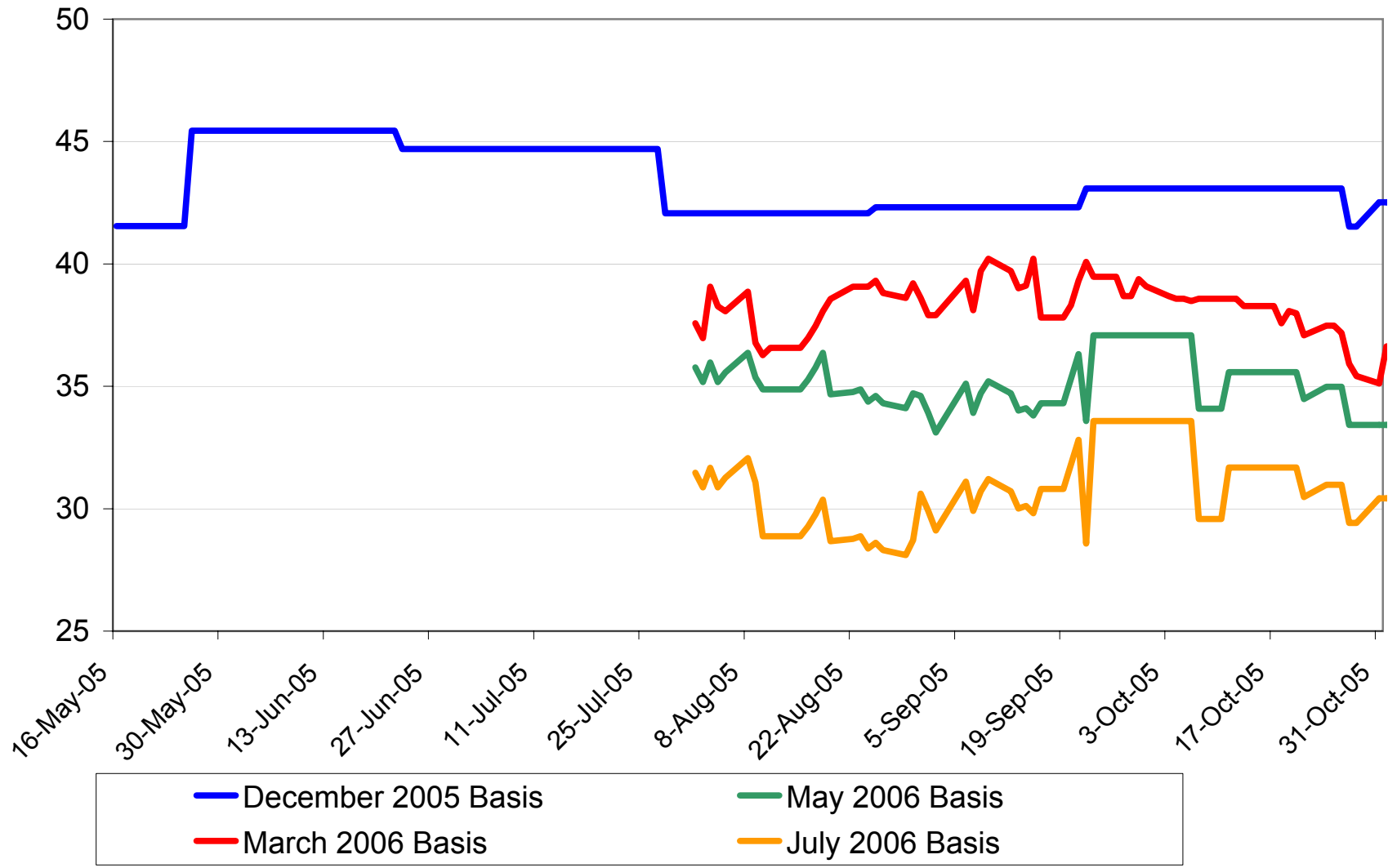
\$Cdn/tonne



2005-06 Std Sel Two-Row Basis Levels

\$ per tonne above WCE W.Barley Futures

\$Cdn/tonne



2005-06 Std Sel Six-Row Basis Levels

\$ per tonne above WCE W.Barley Futures

\$Cdn/tonne

