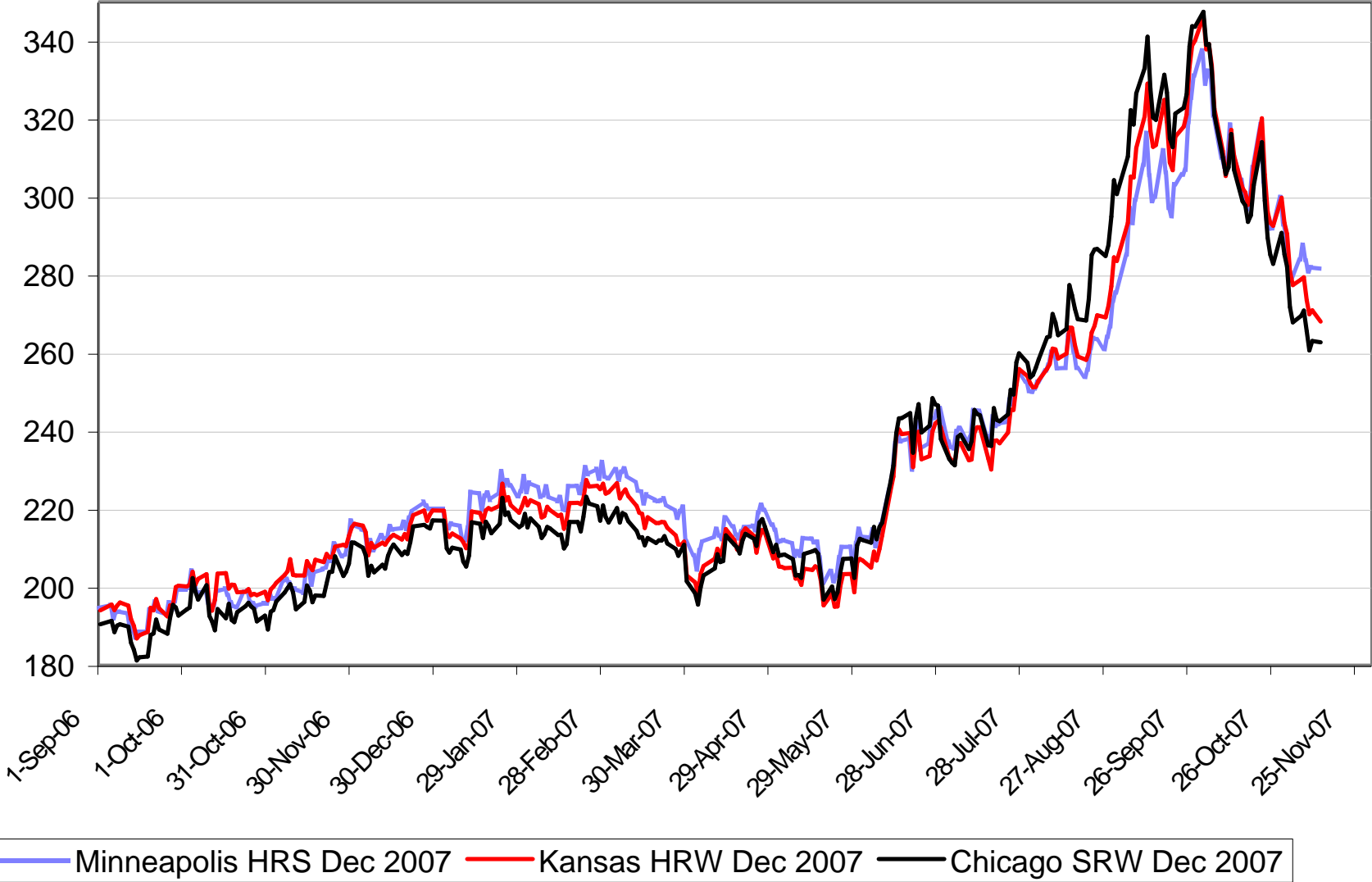


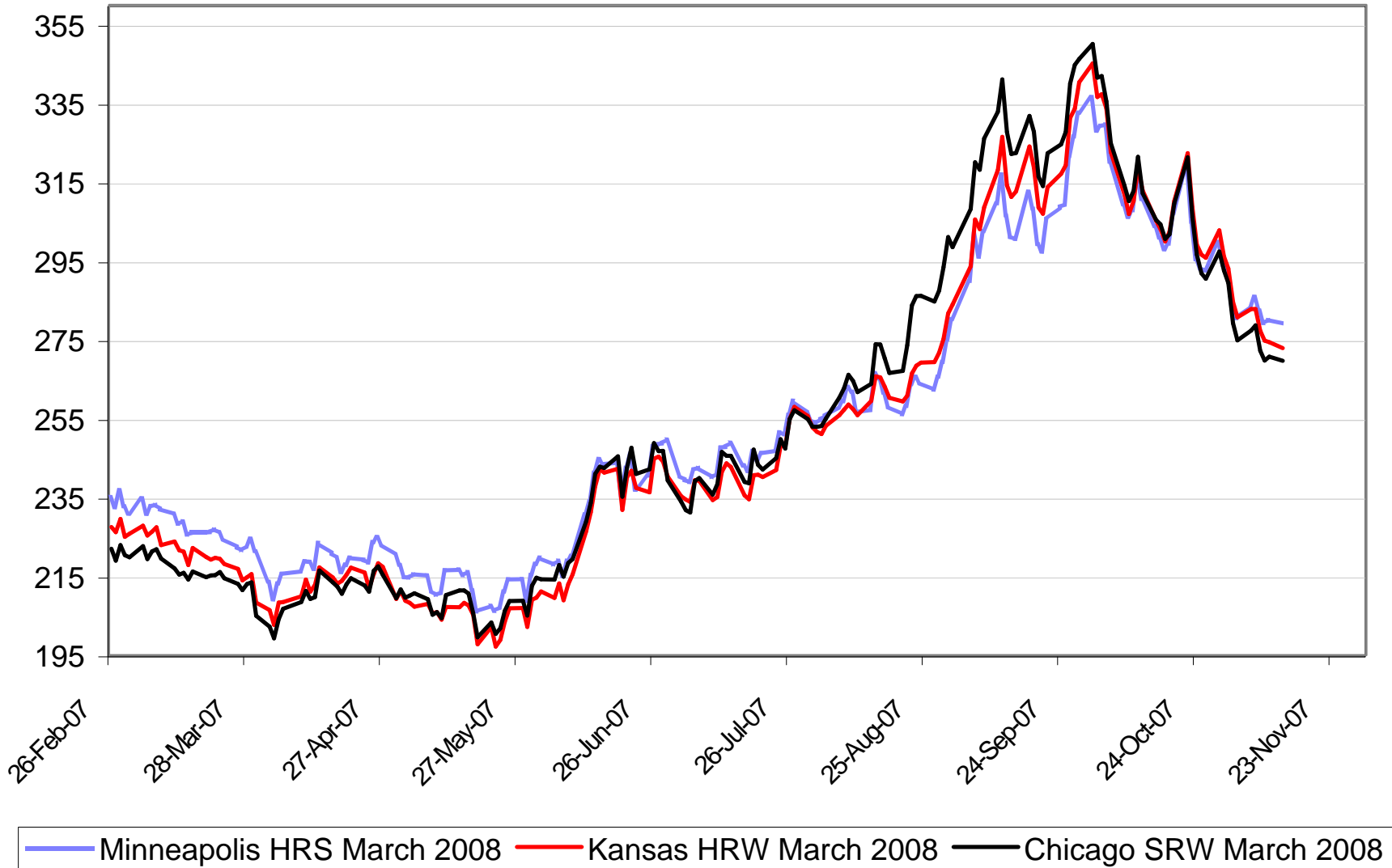
December 2007 Wheat Futures

\$Cdn/tonne



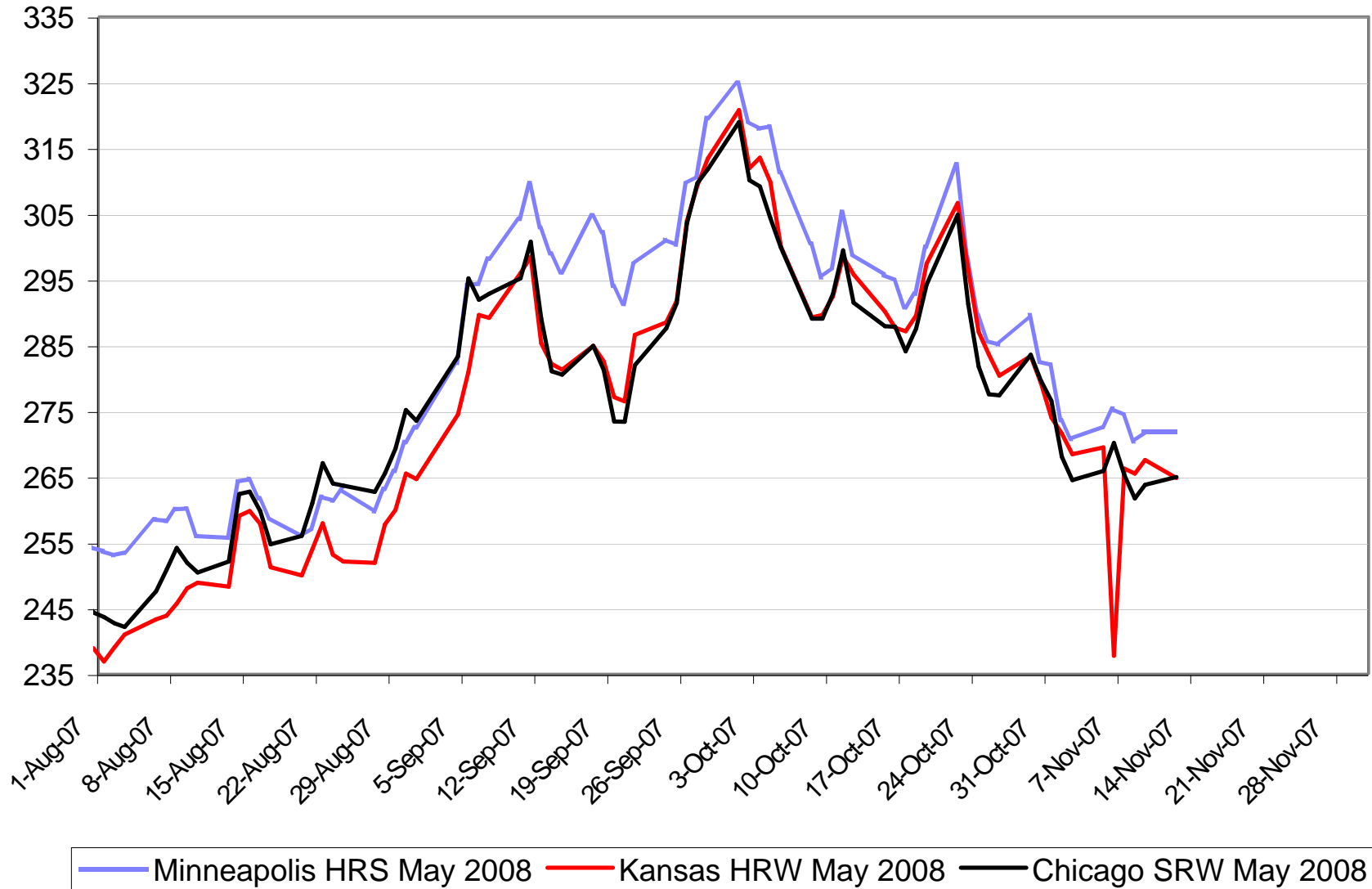
March 2008 Wheat Futures

\$Cdn/tonne



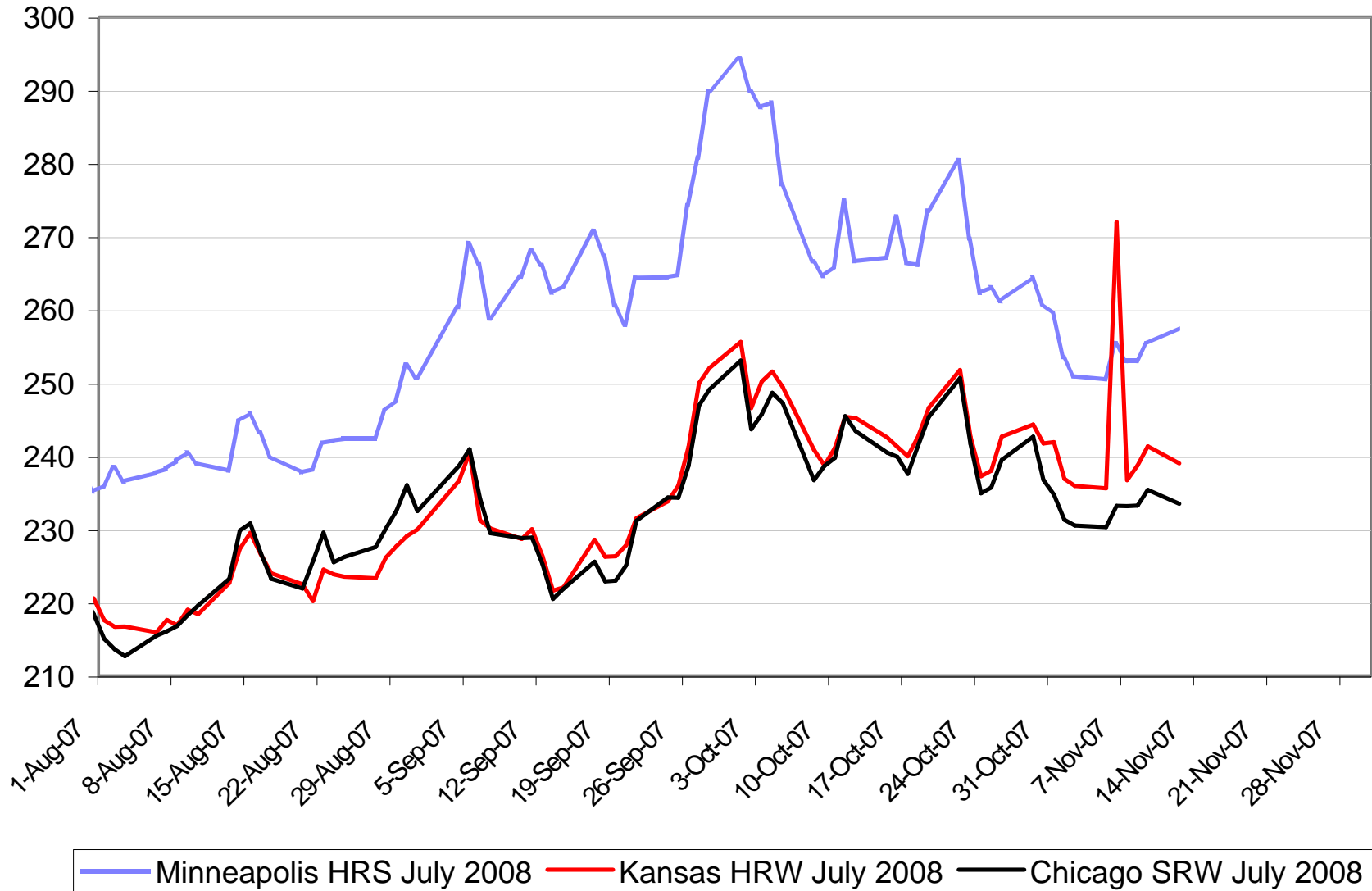
May 2008 Wheat Futures

\$Cdn/tonne



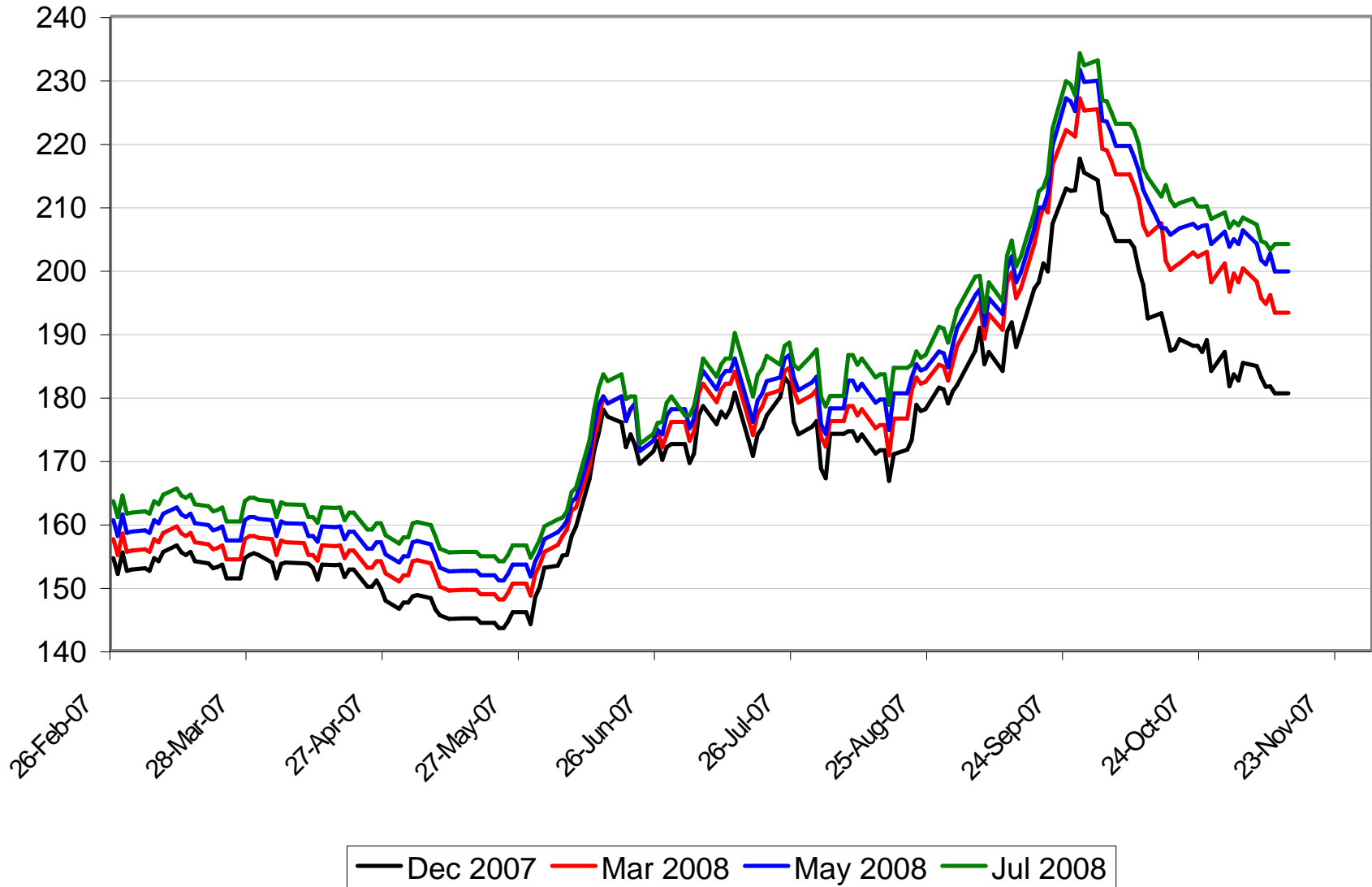
July 2008 Wheat Futures

\$Cdn/tonne



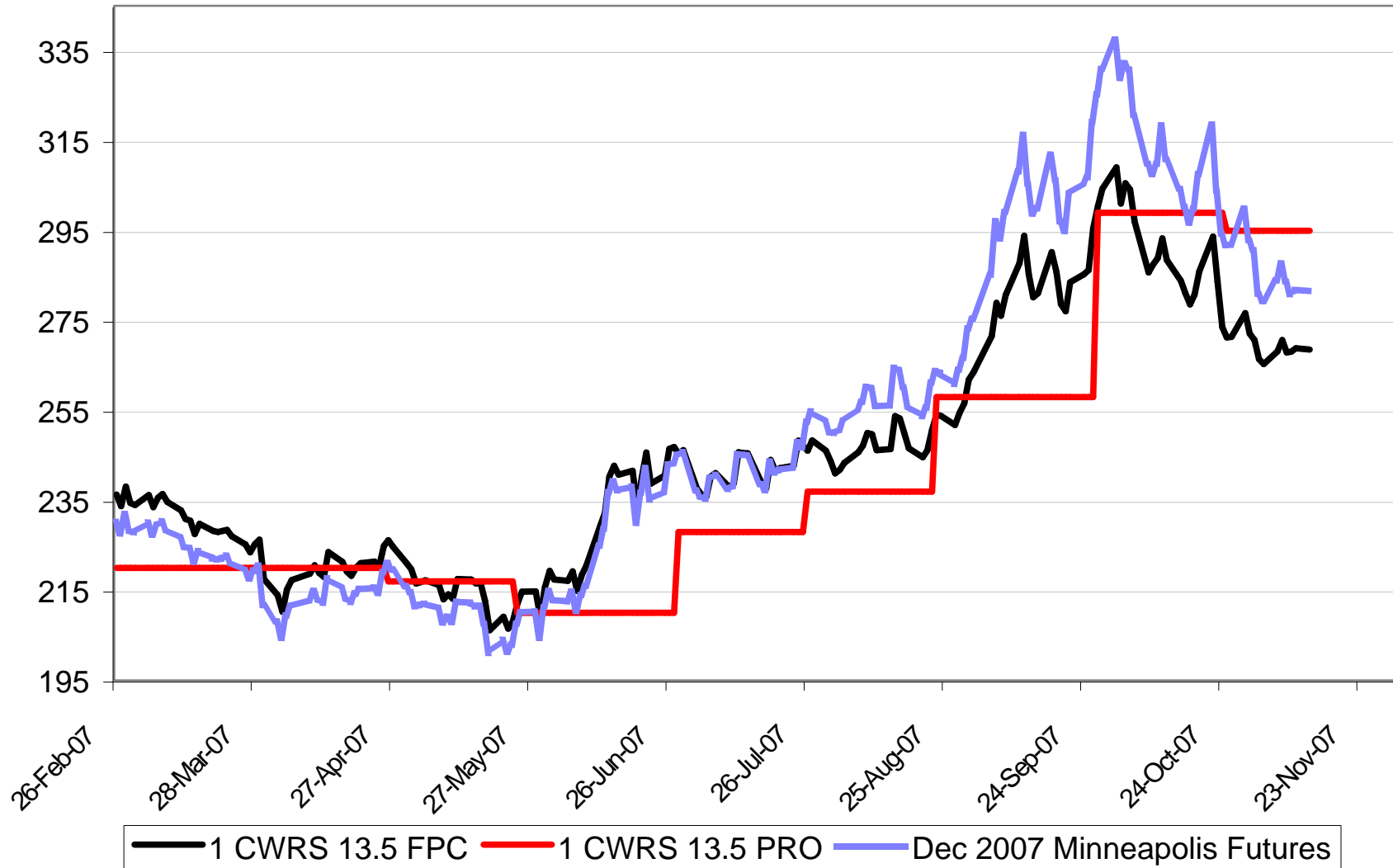
Winnipeg Western Barley Futures

\$Cdn/tonne



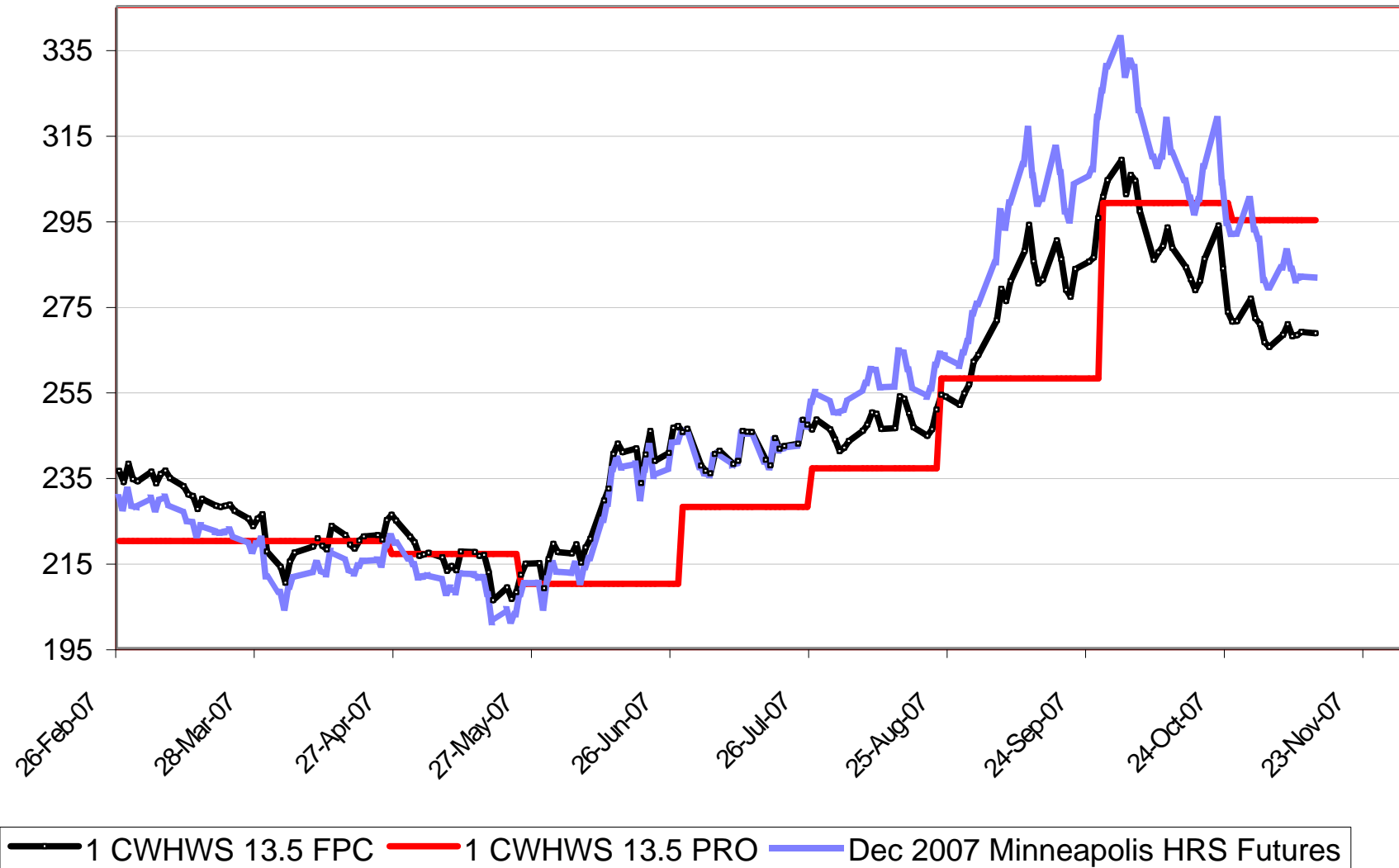
\$Cdn/tonne

2007-08 No.1 CWRS 13.5 Fixed Price



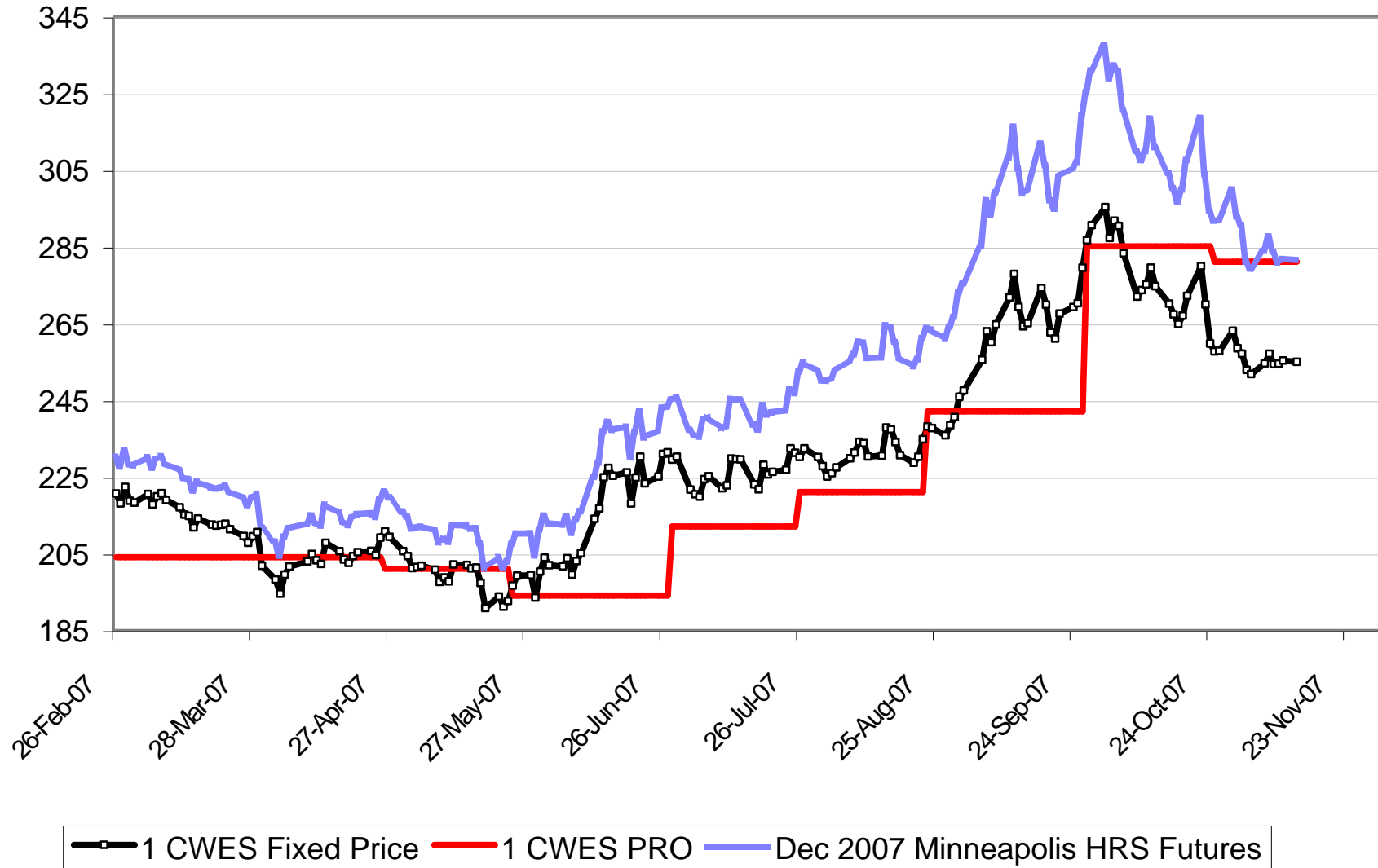
\$Cdn/tonne

2007-08 No. 1 CWHWS 13.5 Fixed Price



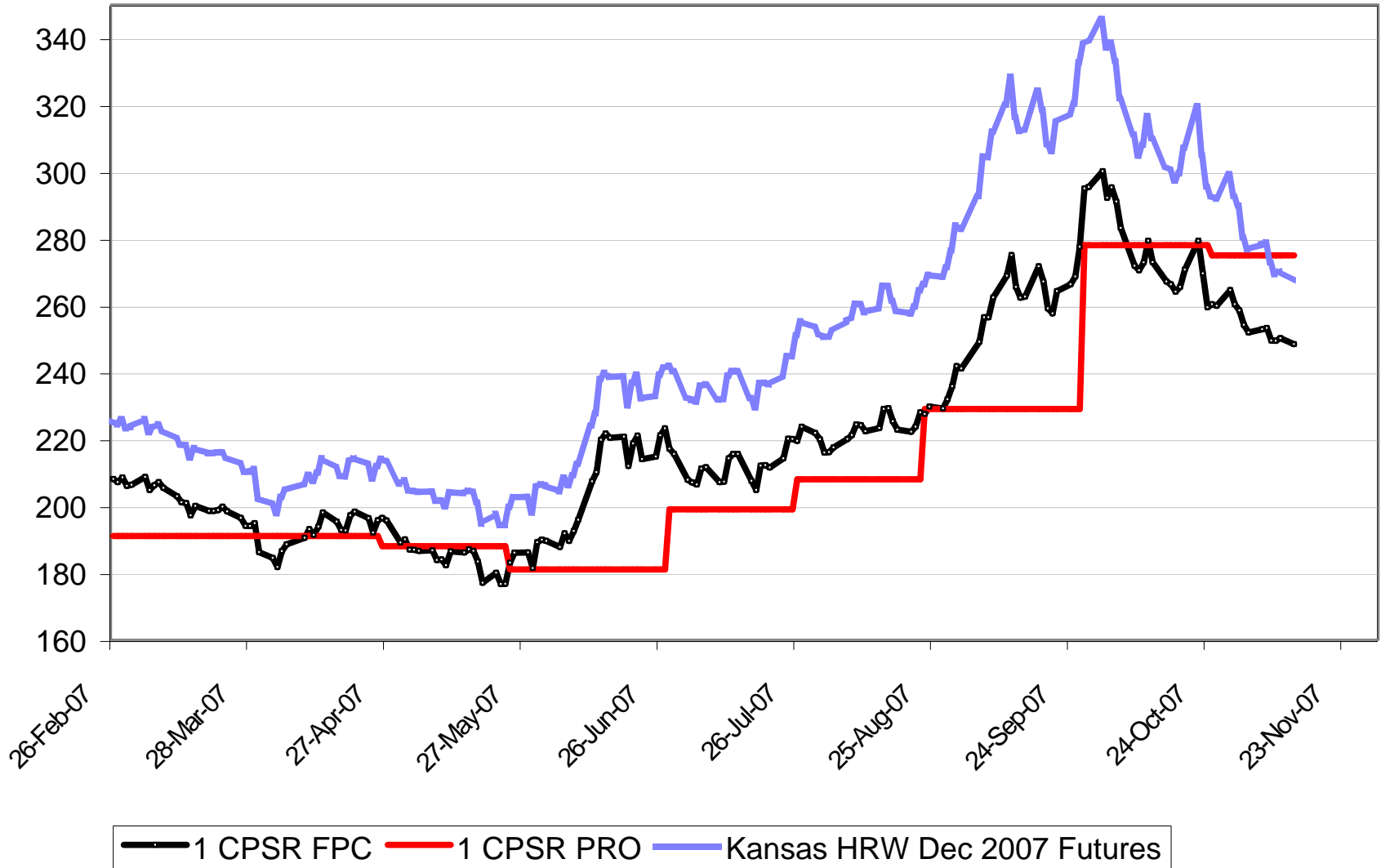
2007-08 No.1 CWES Fixed Price

\$Cdn/tonne



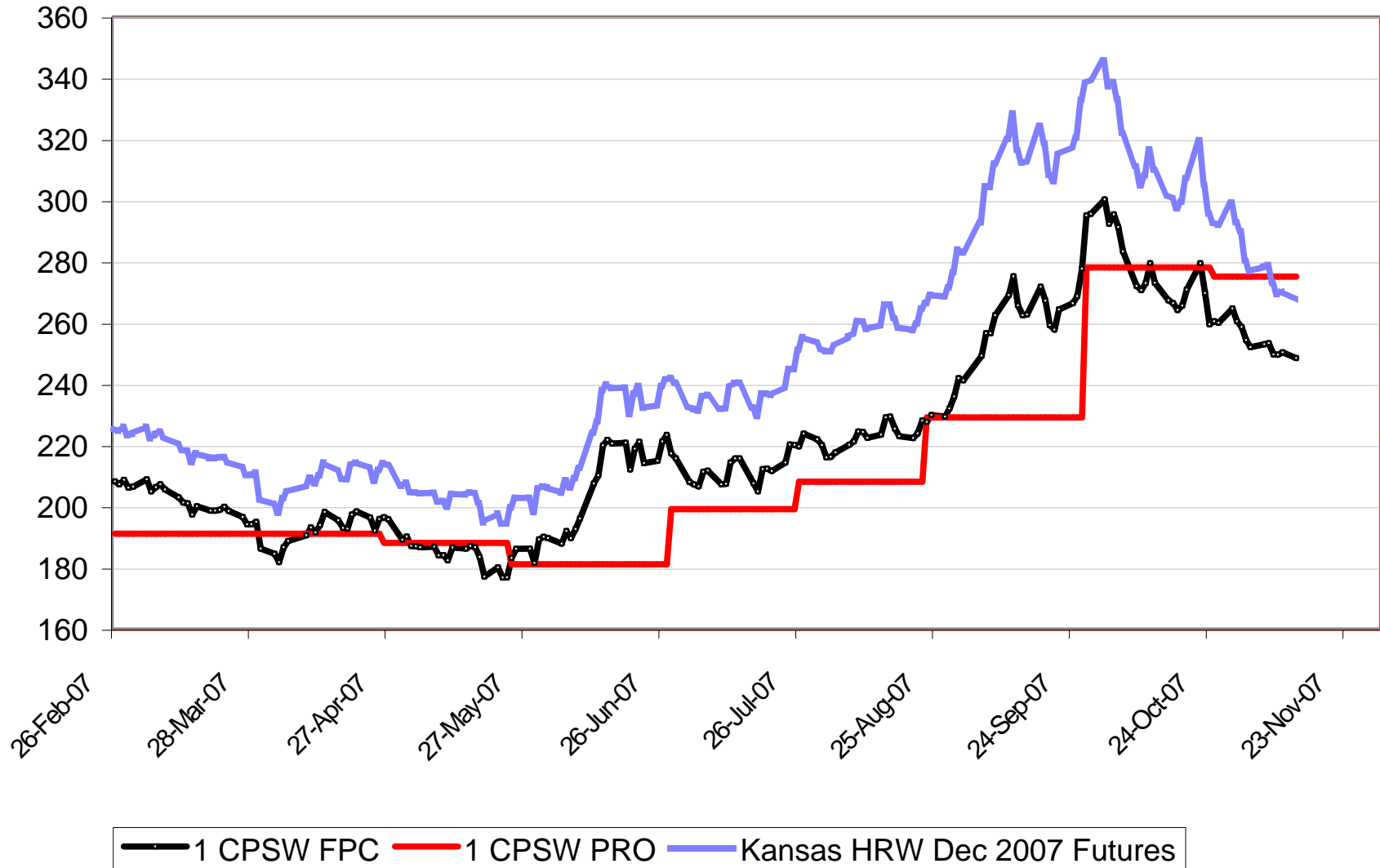
2007-08 No. 1 CPSR Fixed Price

\$Cdn/tonne



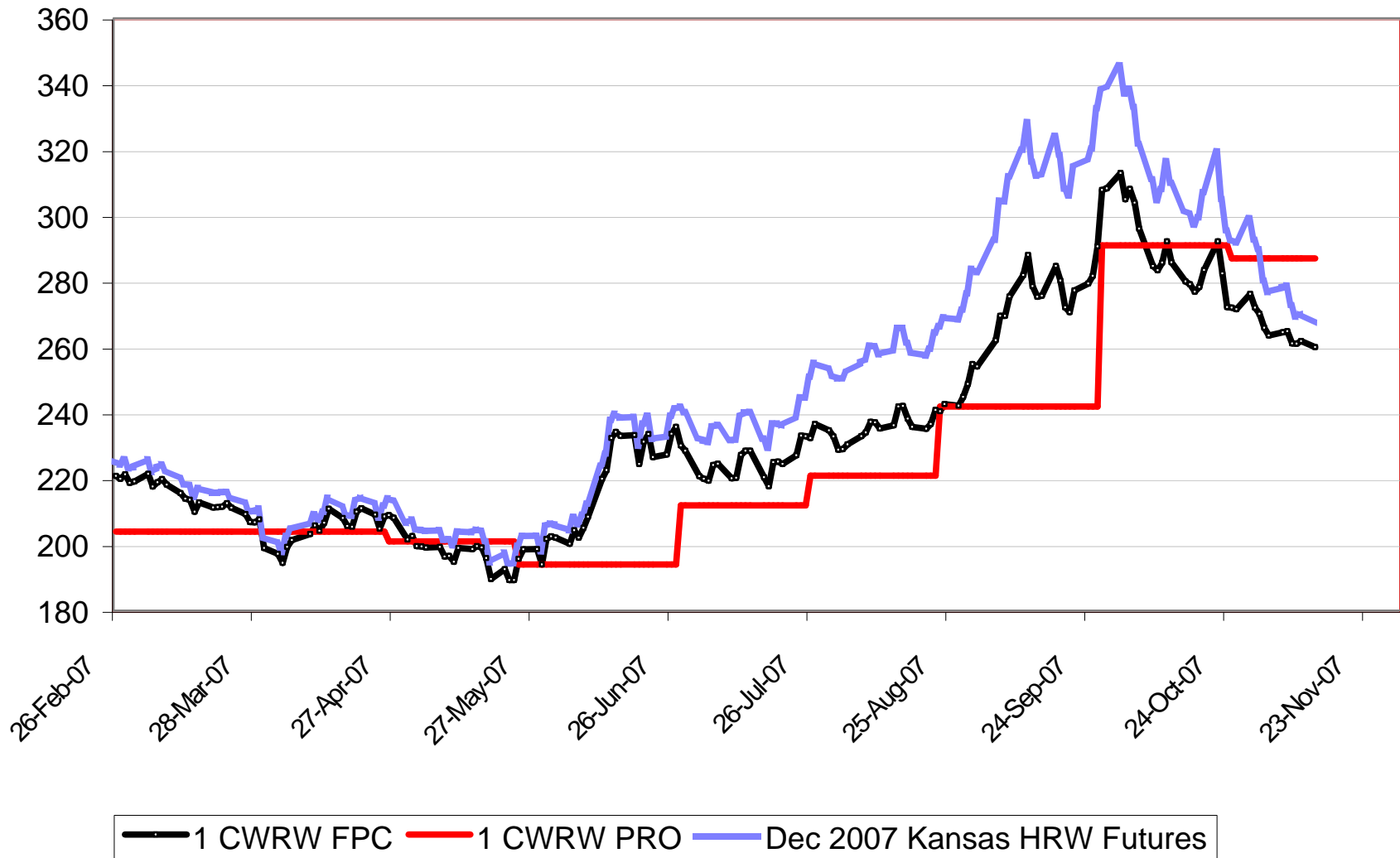
2007-08 No. 1 CPSW Fixed Price

\$Cdn/tonne



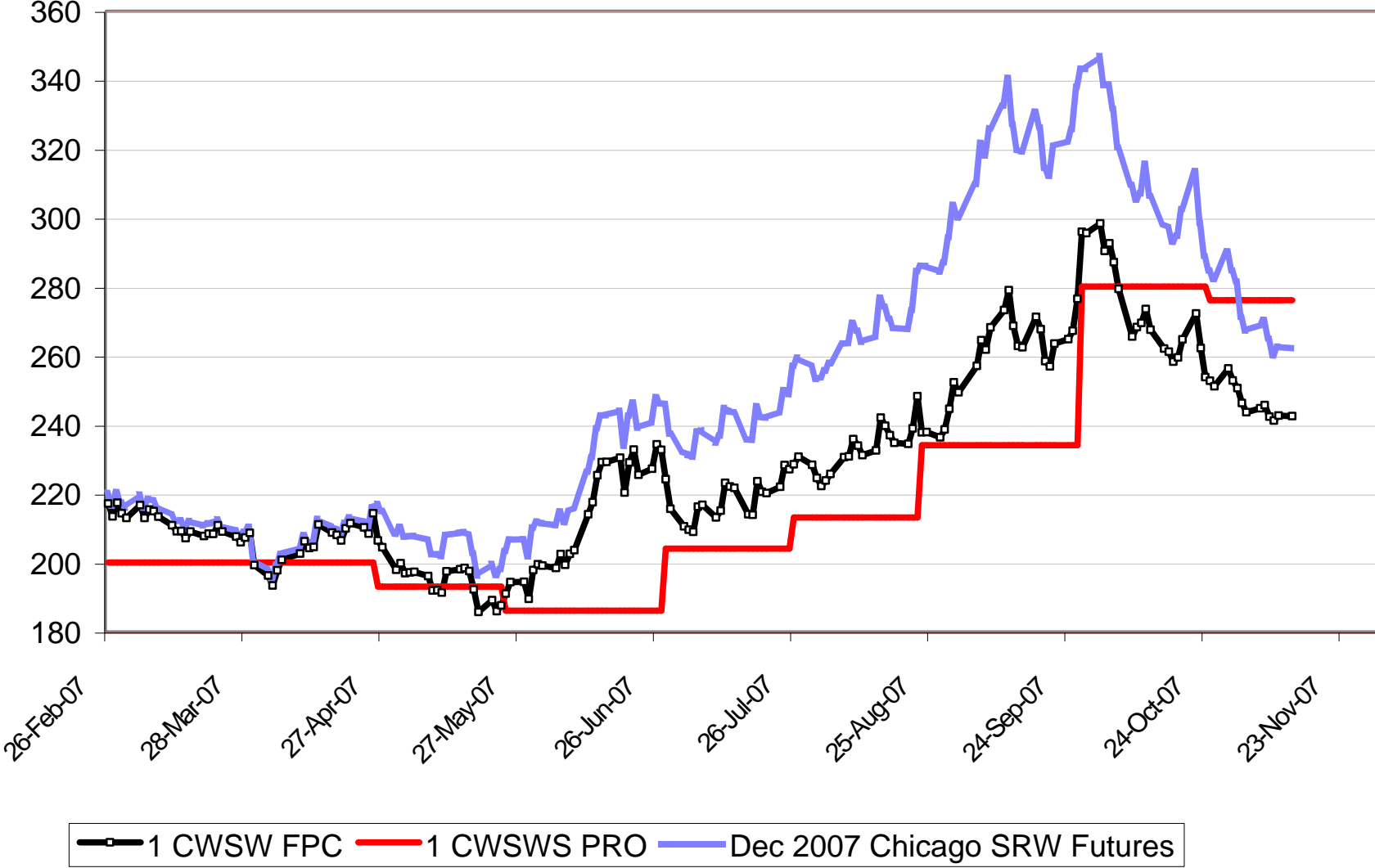
2007-08 No. 1 CWRW Select 11.5 Fixed Price

\$Cdn/tonne



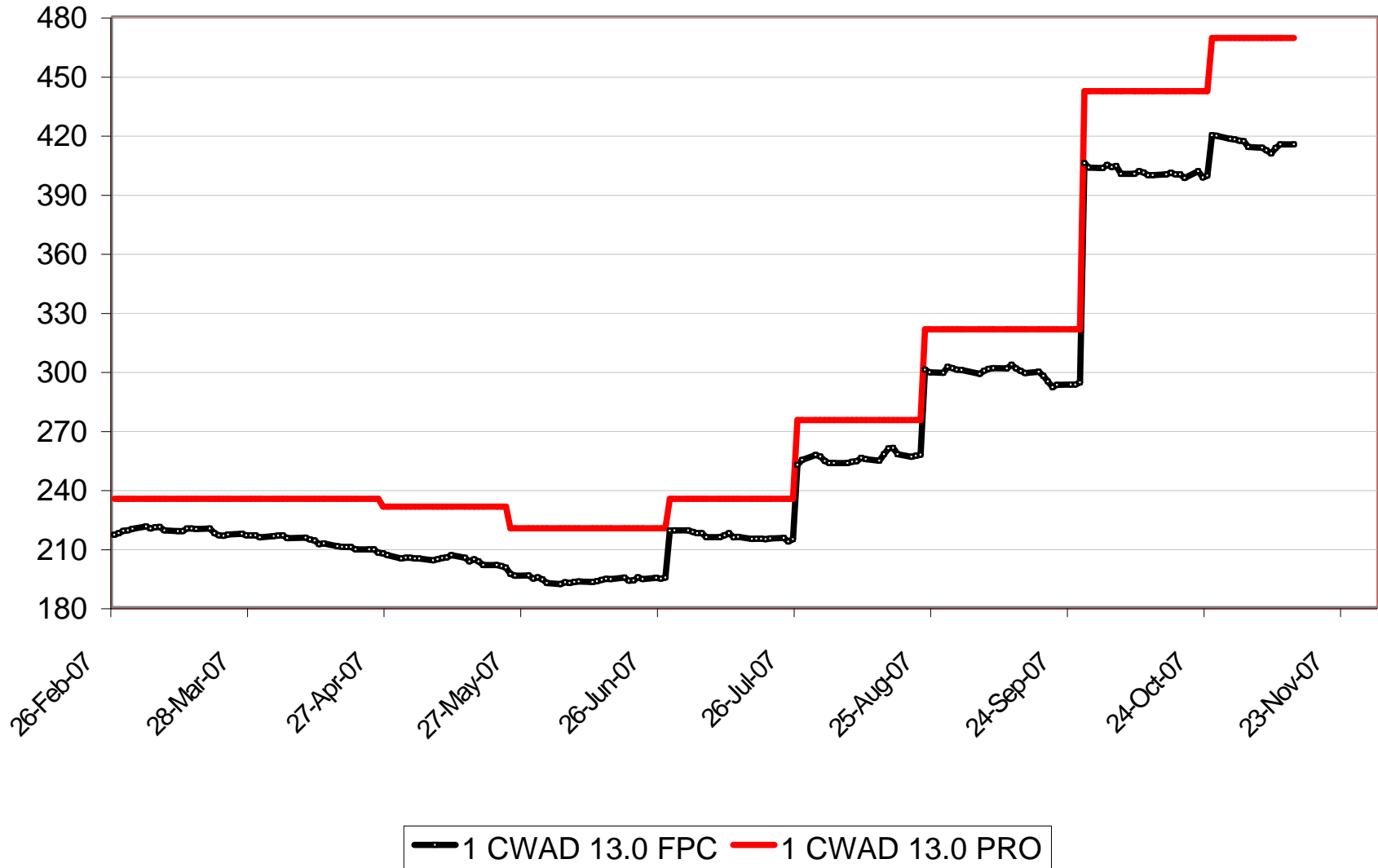
2007-08 No. 1 CWSWS Fixed Price

\$Cdn/tonne



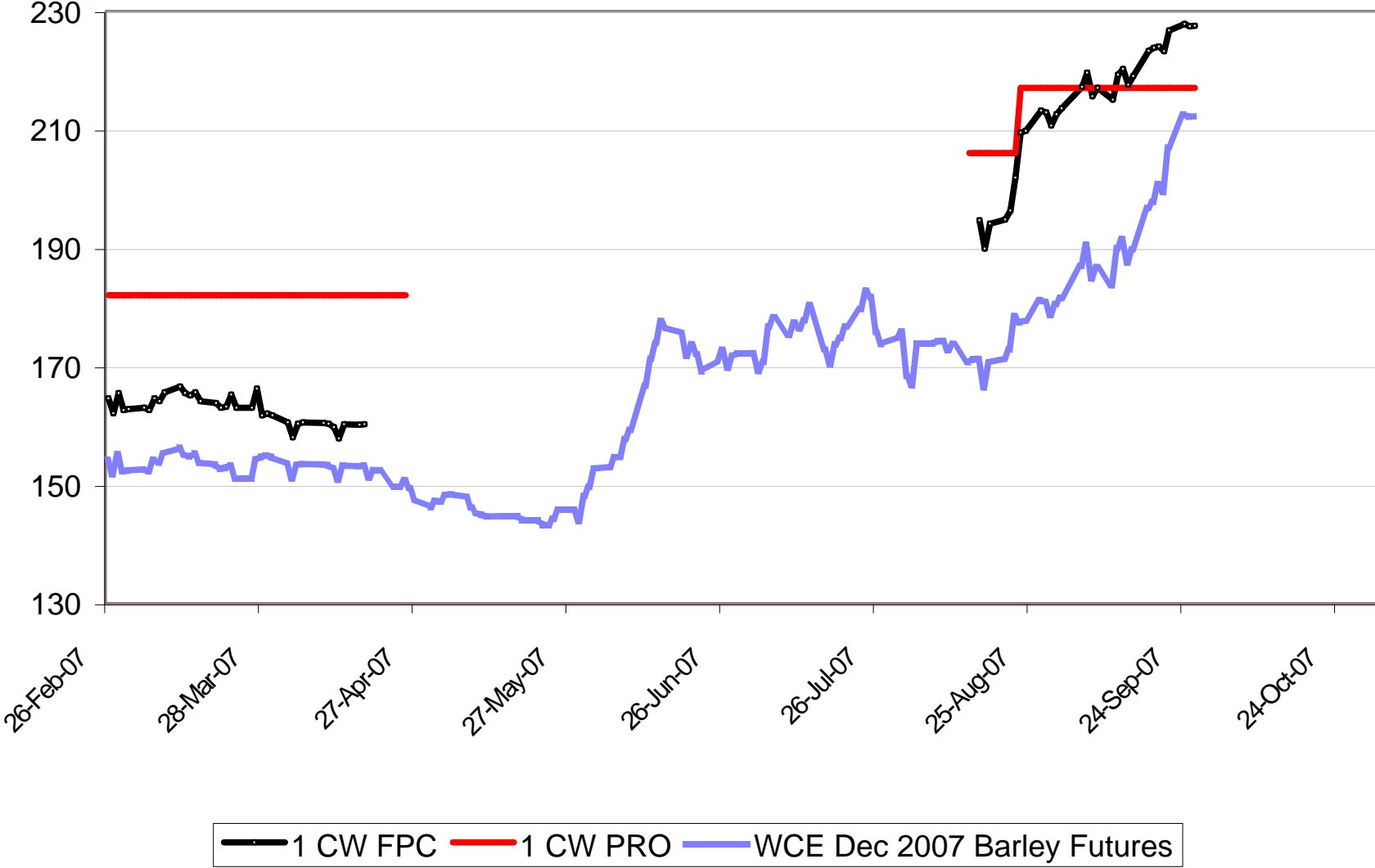
2007-08 No. 1 CWAD 13.0 Fixed Price

\$Cdn/tonne



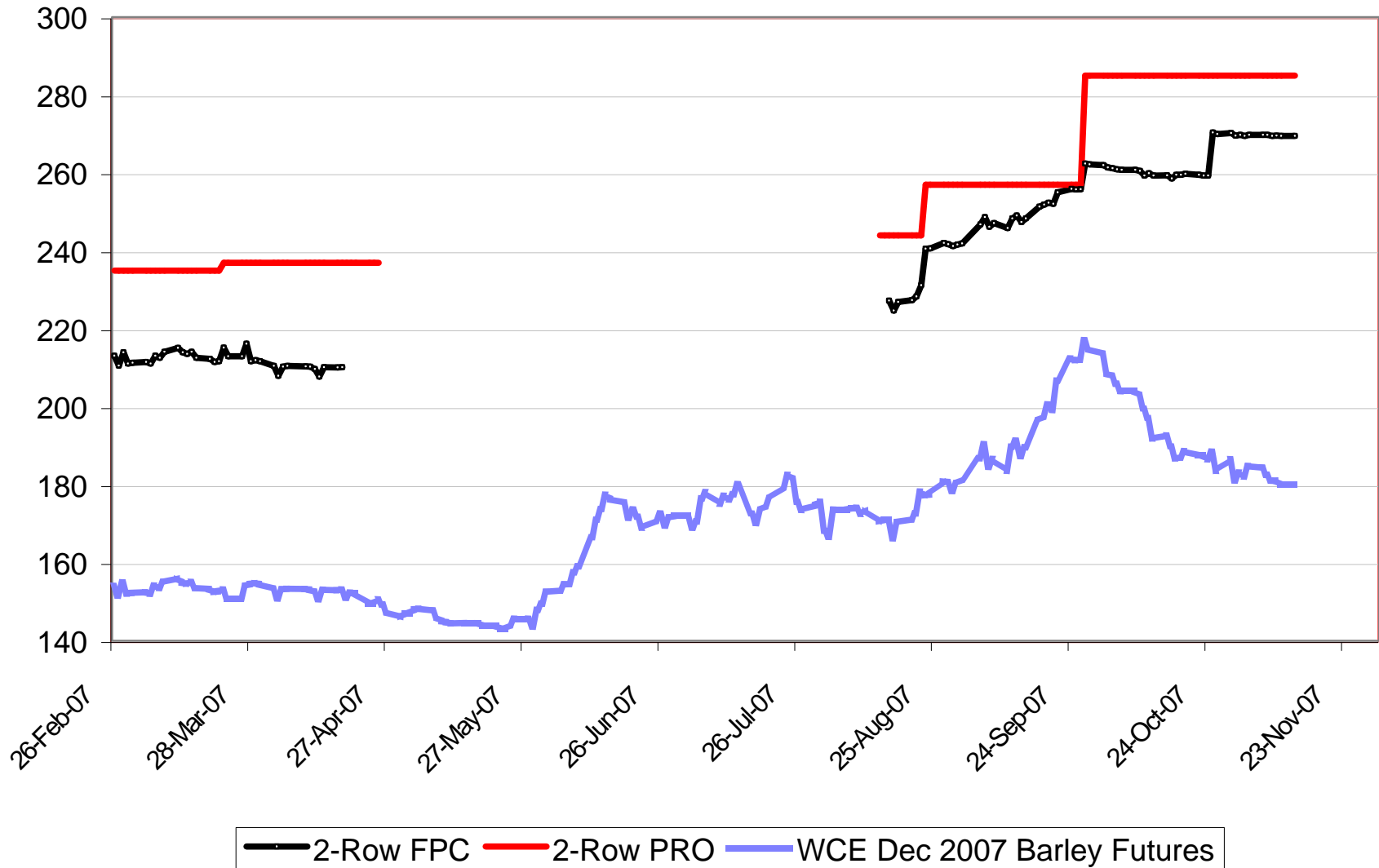
2007-08 No. 1 CW Barley Fixed Price

\$Cdn/tonne



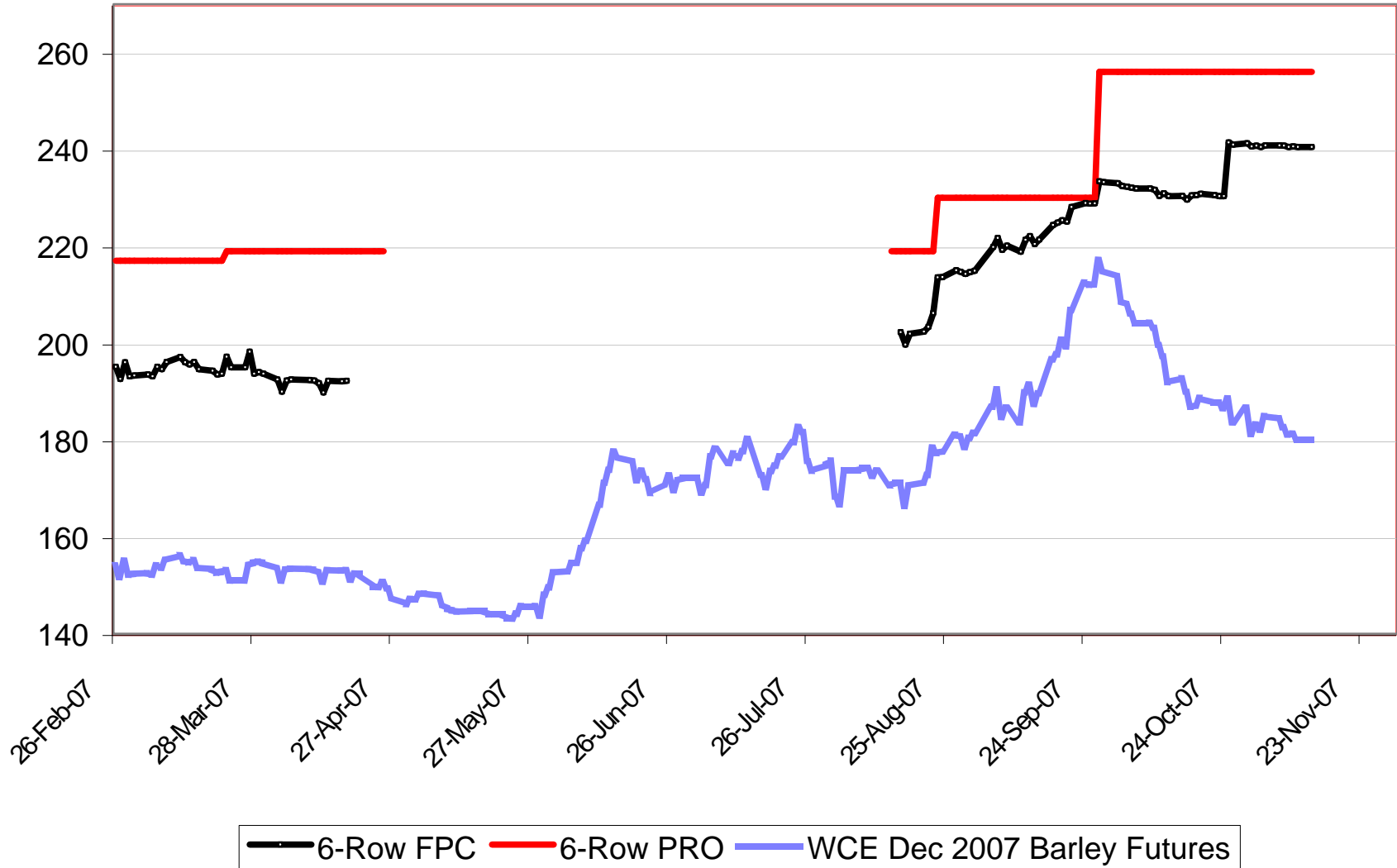
2007-08 Std. Sel. Two-Row Fixed Price

\$Cdn/tonne



2007-08 Std Sel Six-Row Fixed Price

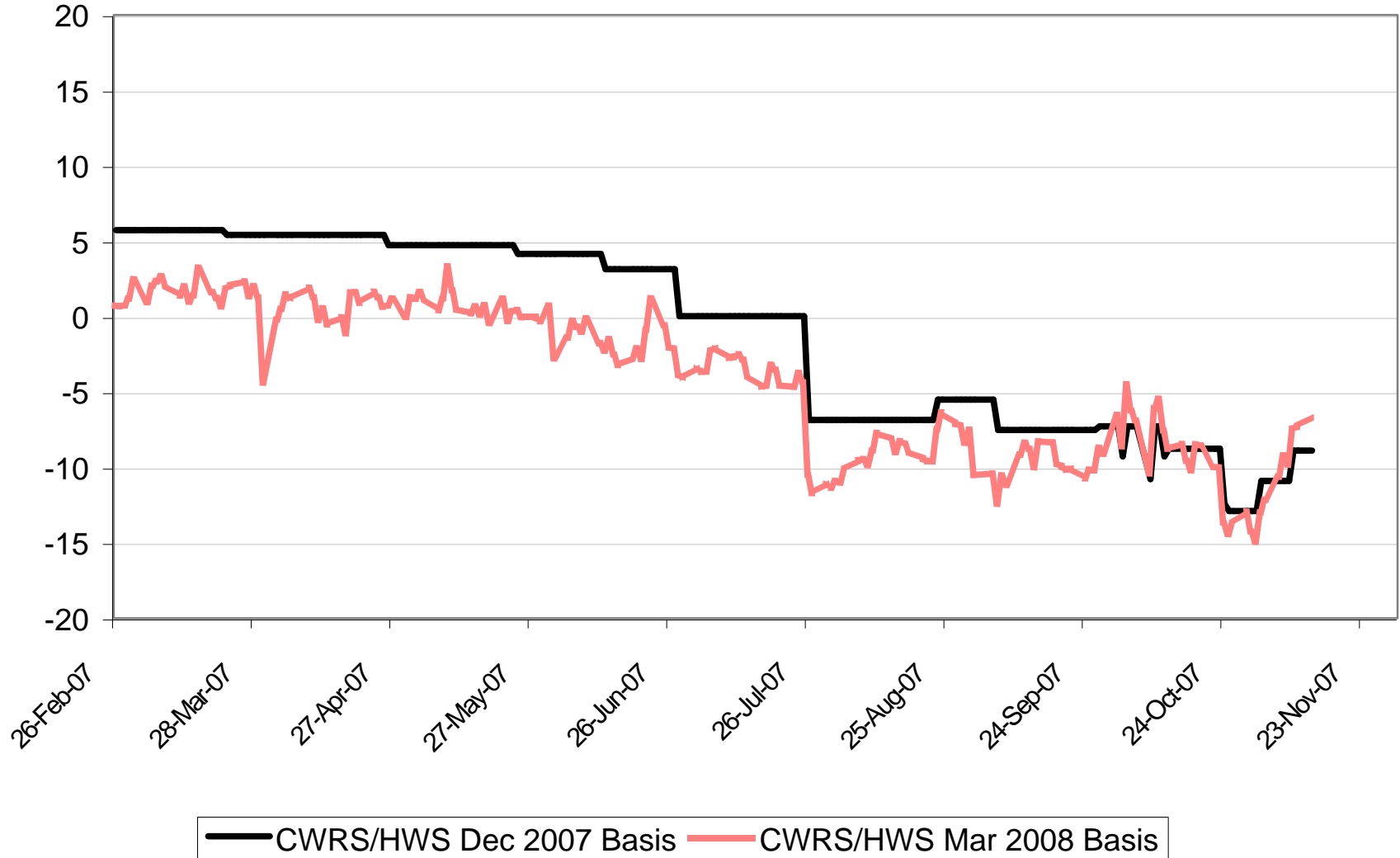
\$Cdn/tonne



2007-08 No. 1 CWRs/HWS 13.5 Basis

\$Cdn/tonne

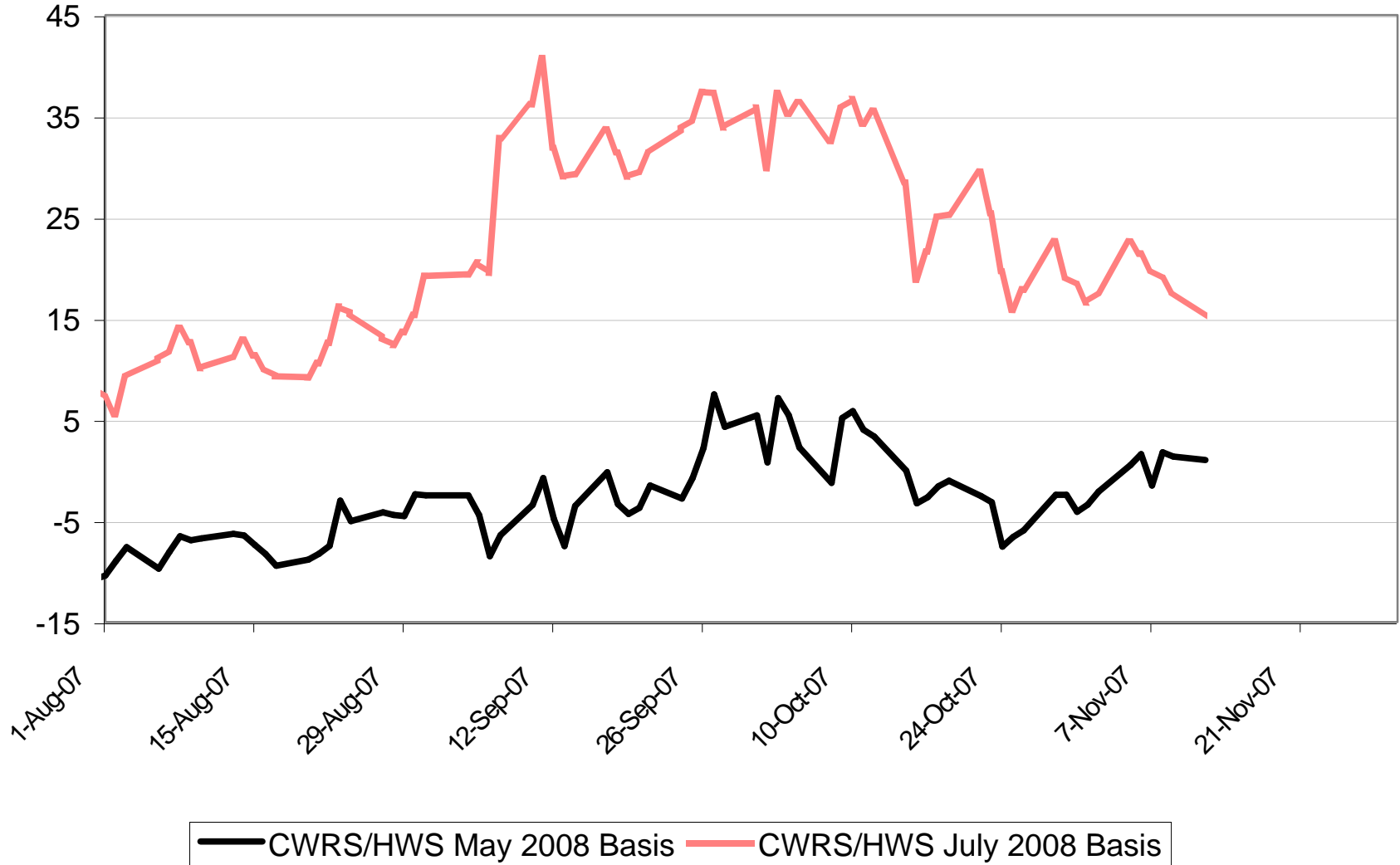
\$ per tonne basis Minn HRS Futures



2007-08 No. 1 CWRs/HWS 13.5 Basis

\$Cdn/tonne

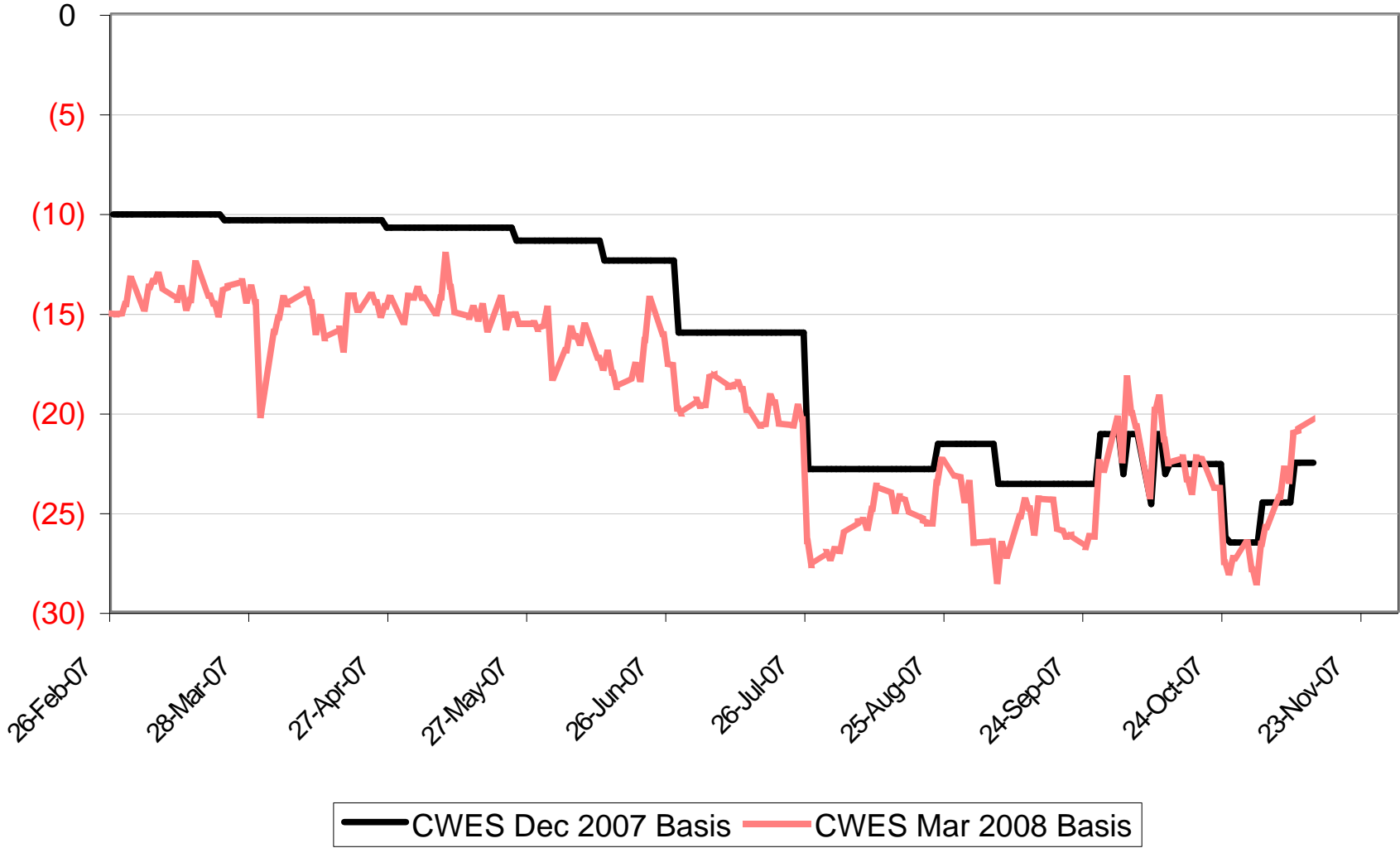
\$ per tonne basis Minn HRS Futures



2007-08 No. 1 CWES Basis

\$ per tonne basis Minn HRS Futures

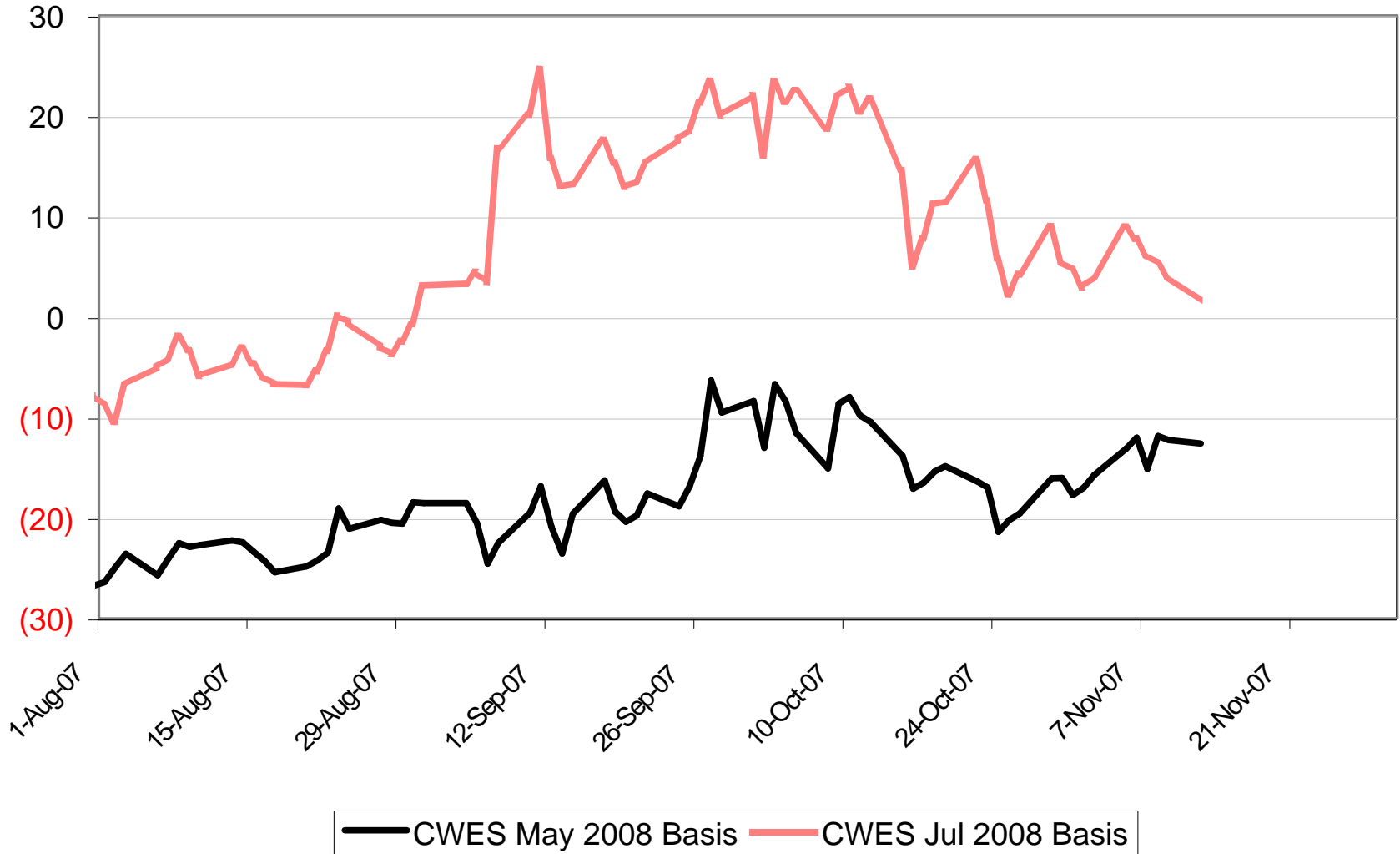
\$Cdn/tonne



2007-08 No. 1 CWES Basis

\$ per tonne basis Minn HRS Futures

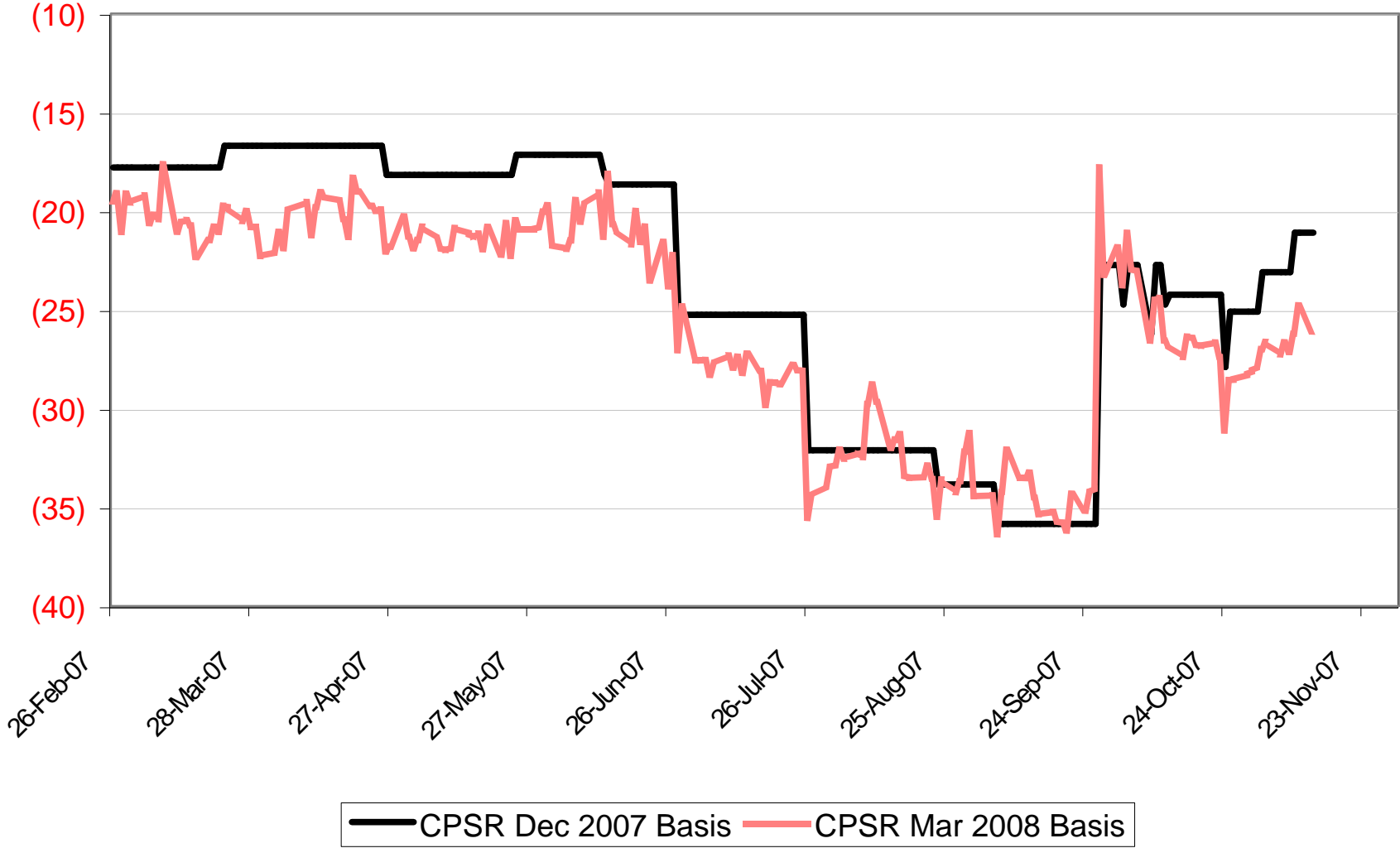
\$Cdn/tonne



2007-08 No. 1 CPSR Basis

\$ per tonne basis Kansas HRW Futures

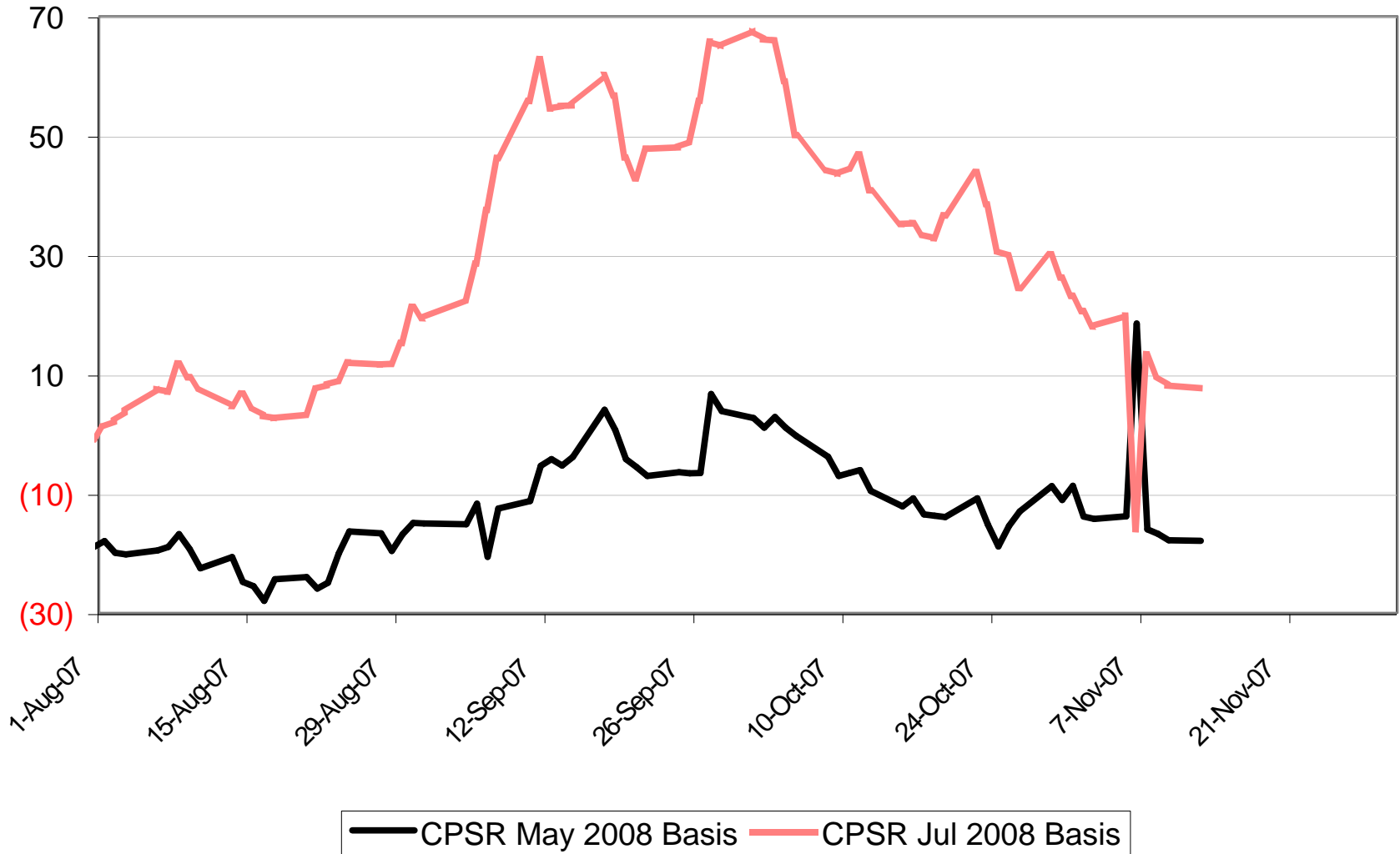
\$Cdn/tonne



2007-08 No. 1 CPSR Basis

\$ per tonne basis Kansas HRW Futures

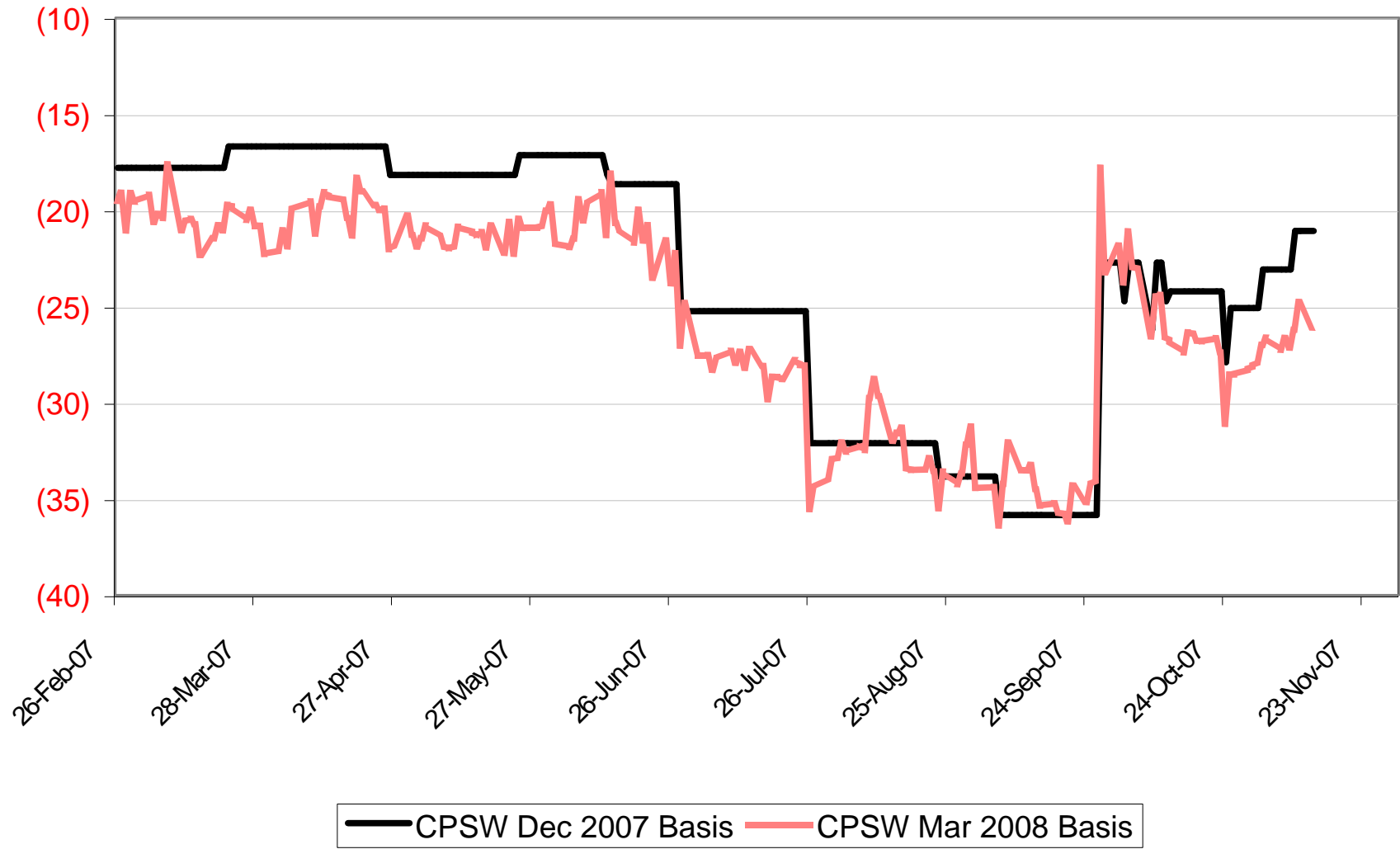
\$Cdn/tonne



2007-08 No. 1 CPSW Basis

\$ per tonne basis Kansas HRW Futures

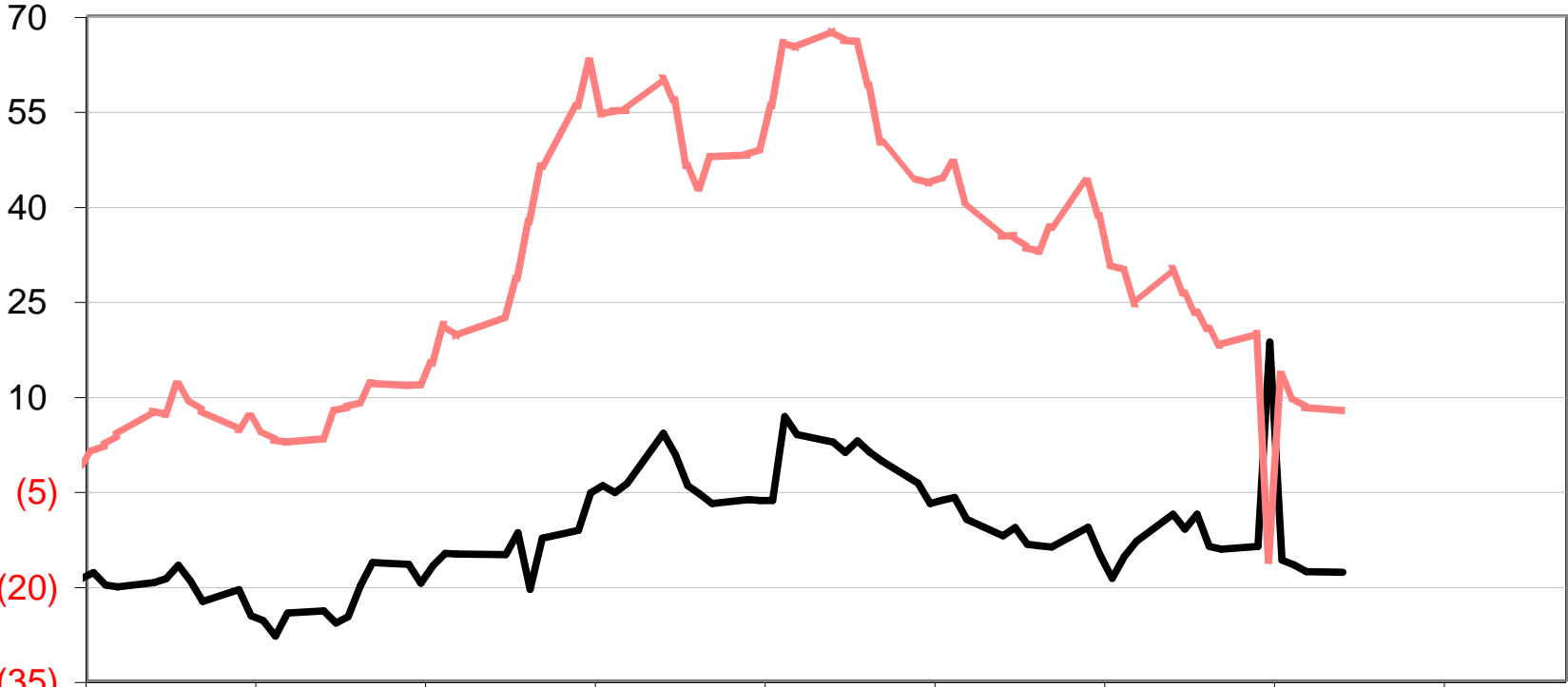
\$Cdn/tonne



2007-08 No. 1 CPSW Basis

\$ per tonne basis Kansas HRW Futures

\$Cdn/tonne



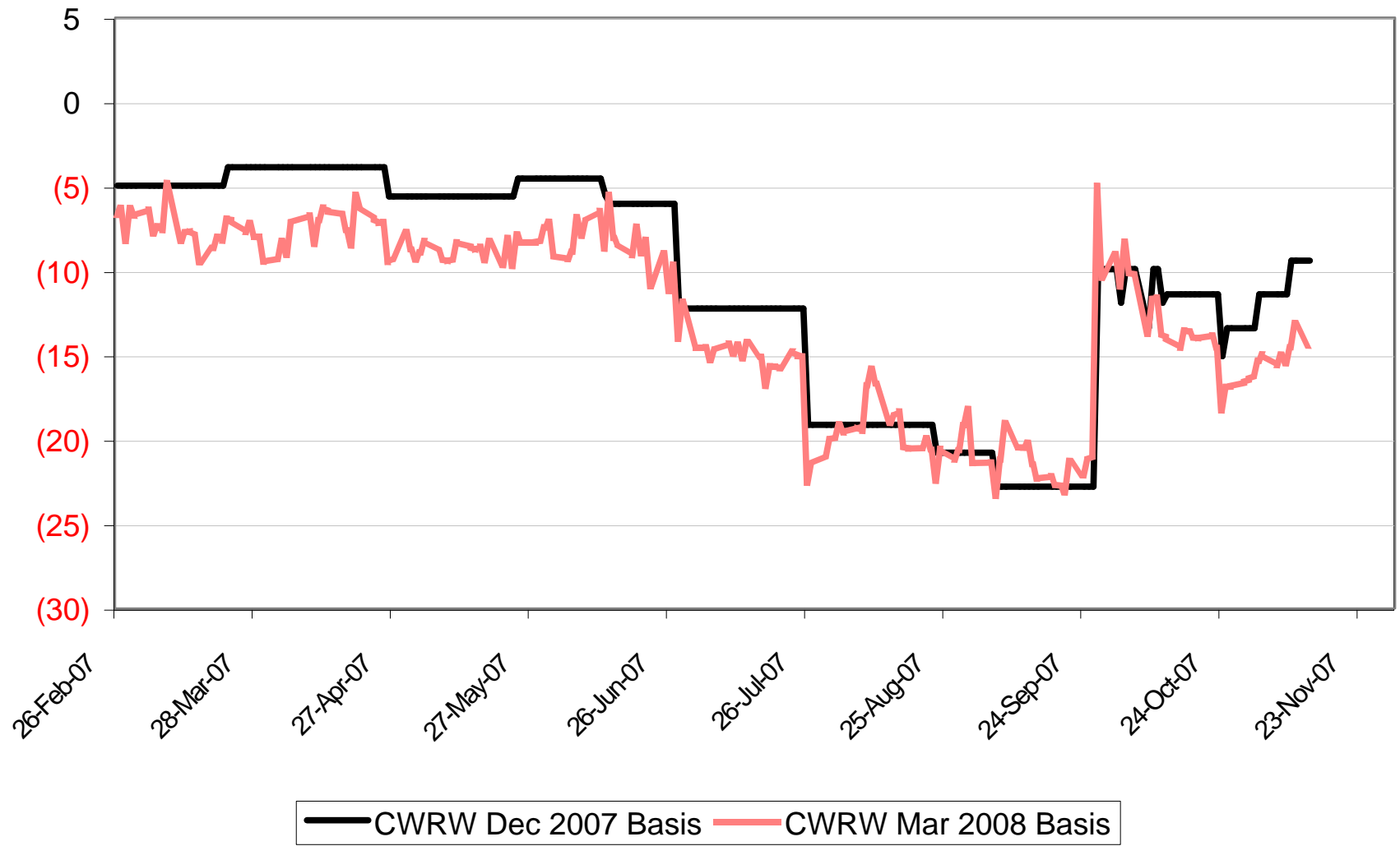
(5)
(20)
(35)

— CPSW May 2008 Basis — CPSW Jul 2008 Basis

2007-08 No. 1 CWRW Basis

\$ per tonne basis Kansas HRW Futures

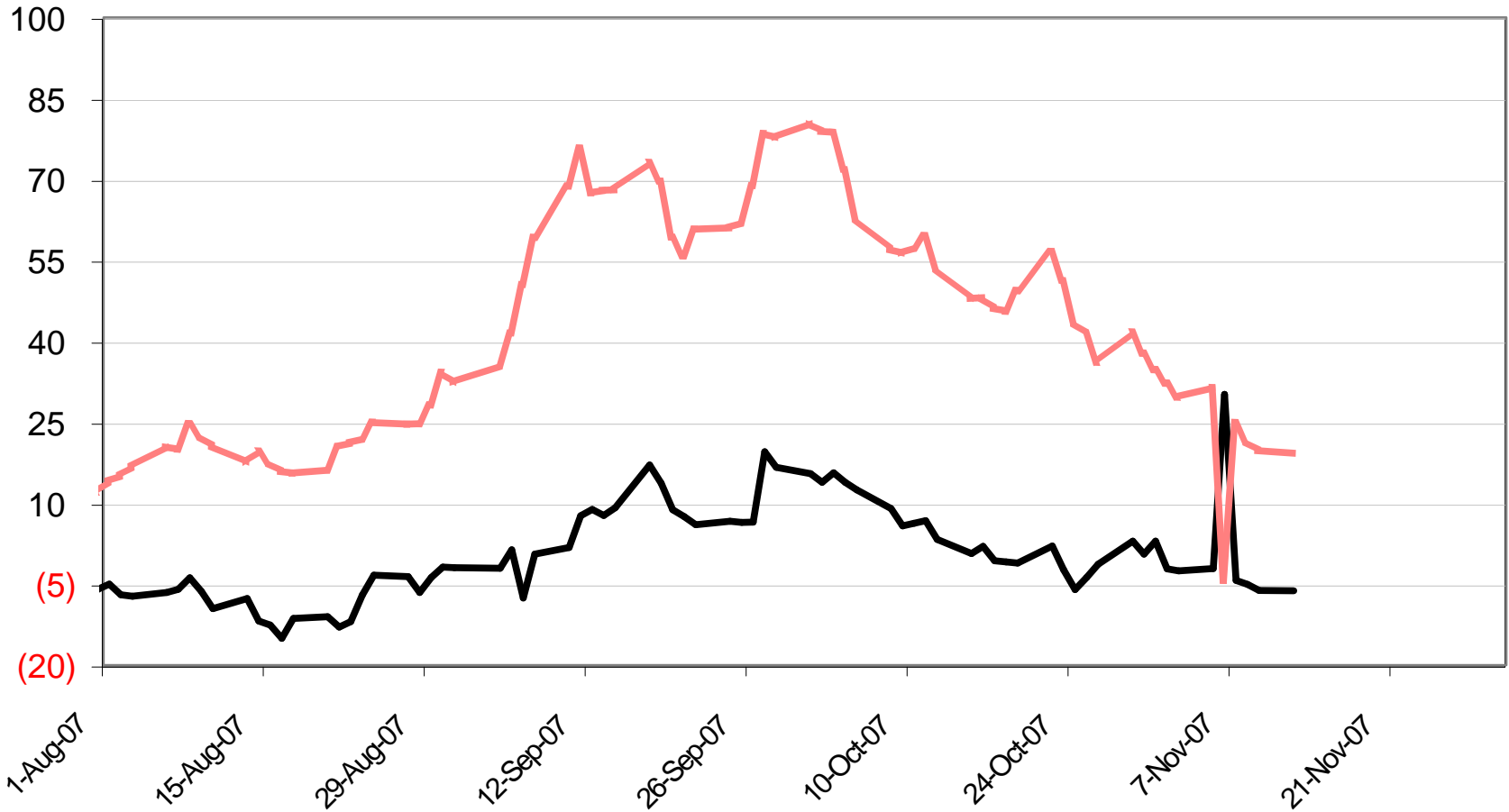
\$Cdn/tonne



2007-08 No. 1 CWRW Basis

\$ per tonne basis Kansas HRW Futures

\$Cdn/tonne

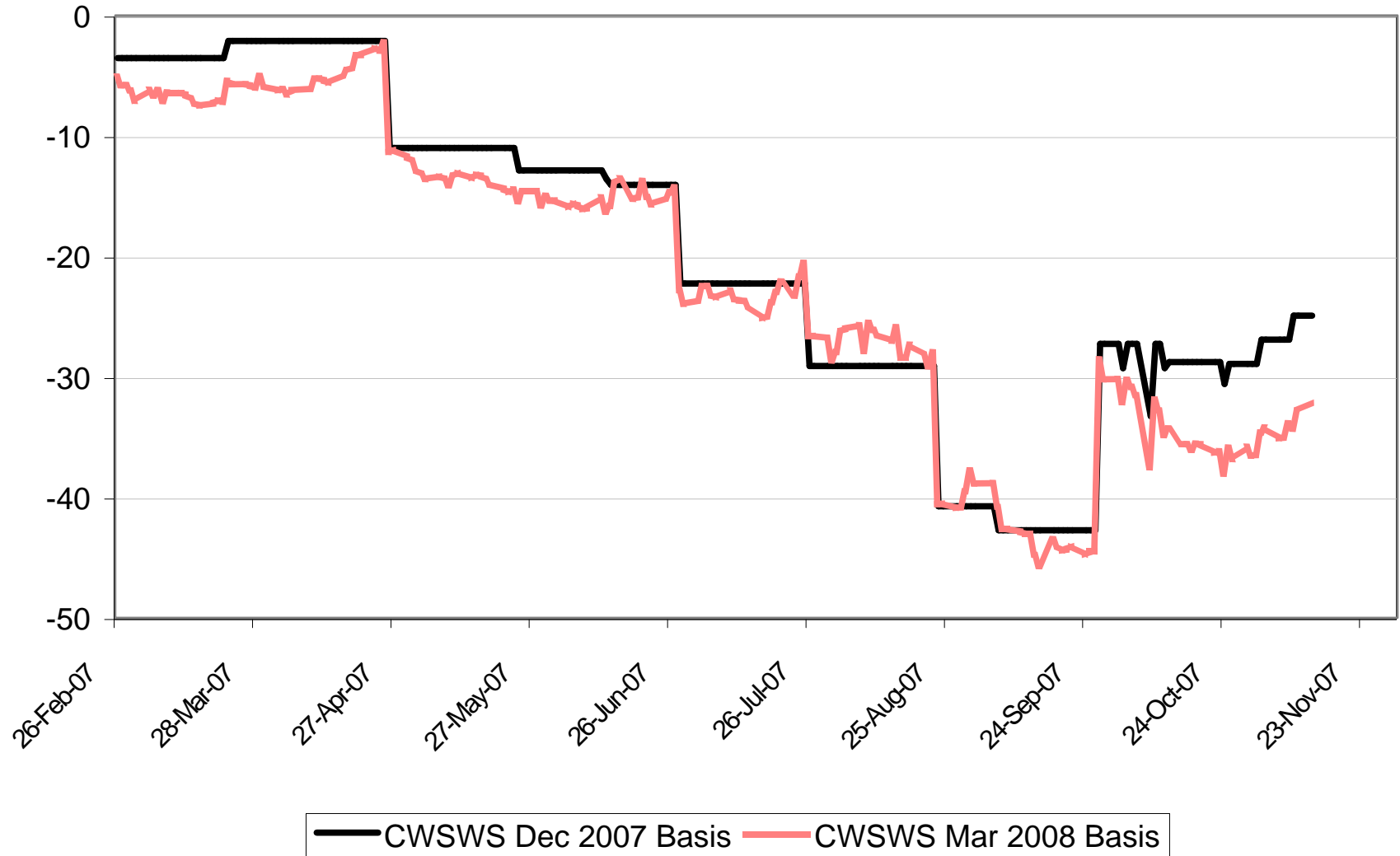


— CWRW May 2008 Basis — CWRW Jul 2008 Basis

2007-08 No. 1 CWSWS Basis Levels

\$ per tonne basis Chicago SRW Futures

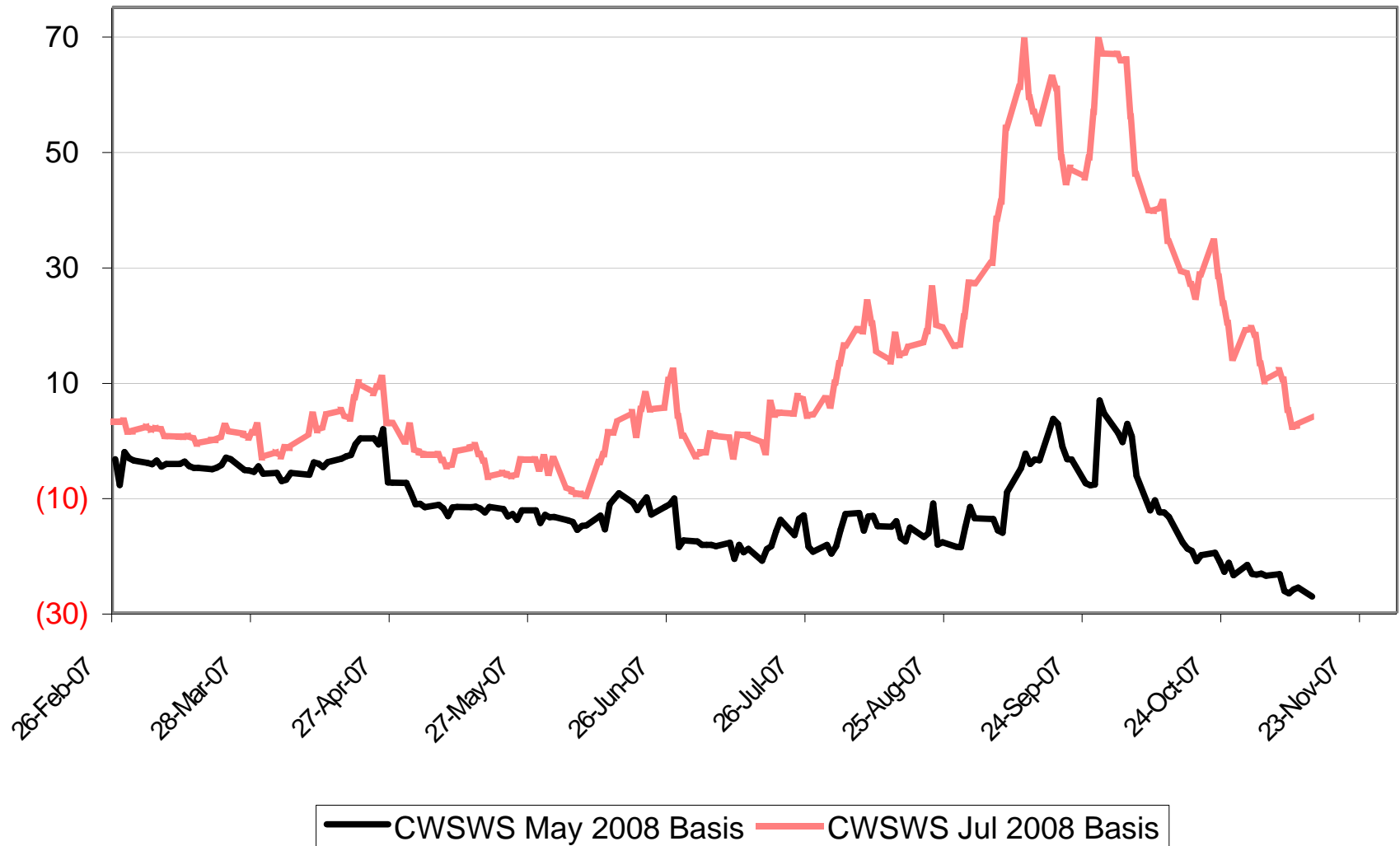
\$Cdn/tonne



2007-08 No. 1 CWSWS Basis Levels

\$ per tonne basis Chicago SRW Futures

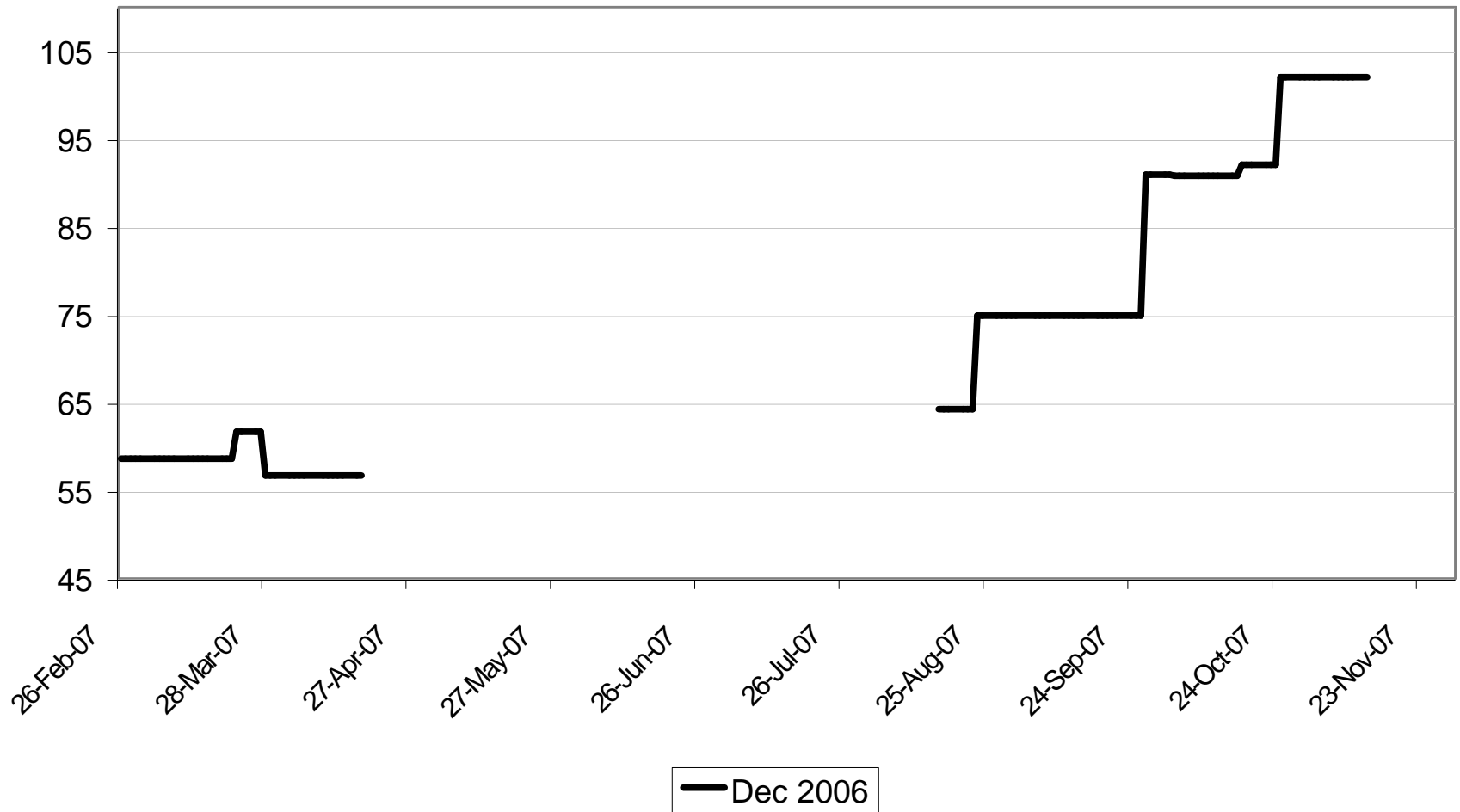
\$Cdn/tonne



2007-08 Std Sel Two-Row Basis Levels

\$ per tonne basis WCE W. Barley Futures

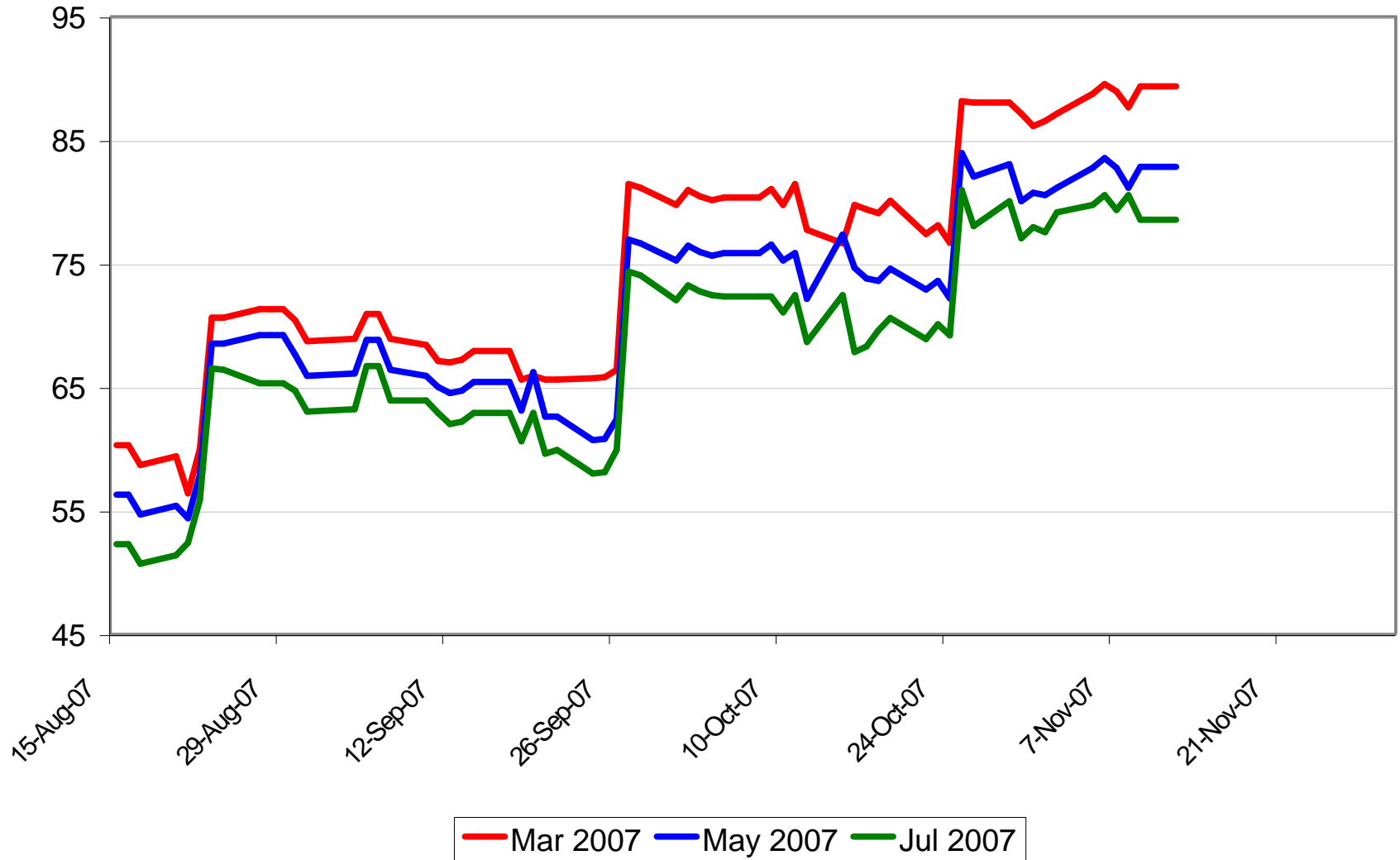
\$Cdn/tonne



2007-08 Std Sel Two-Row Basis Levels

\$ per tonne basis WCE W. Barley Futures

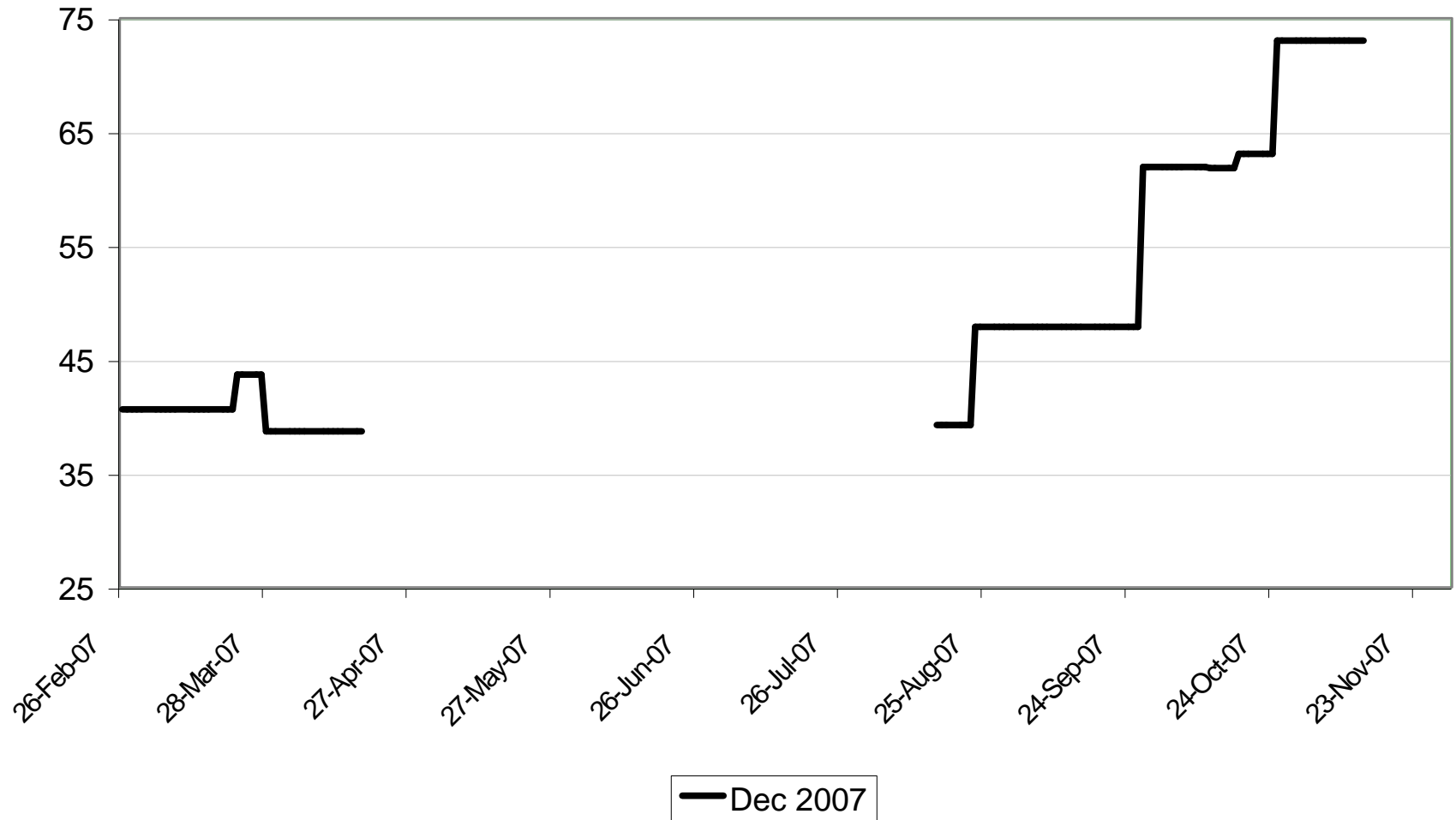
\$Cdn/tonne



2007-08 Std Sel Six-Row Basis Levels

\$ per tonne above WCE W. Barley Futures

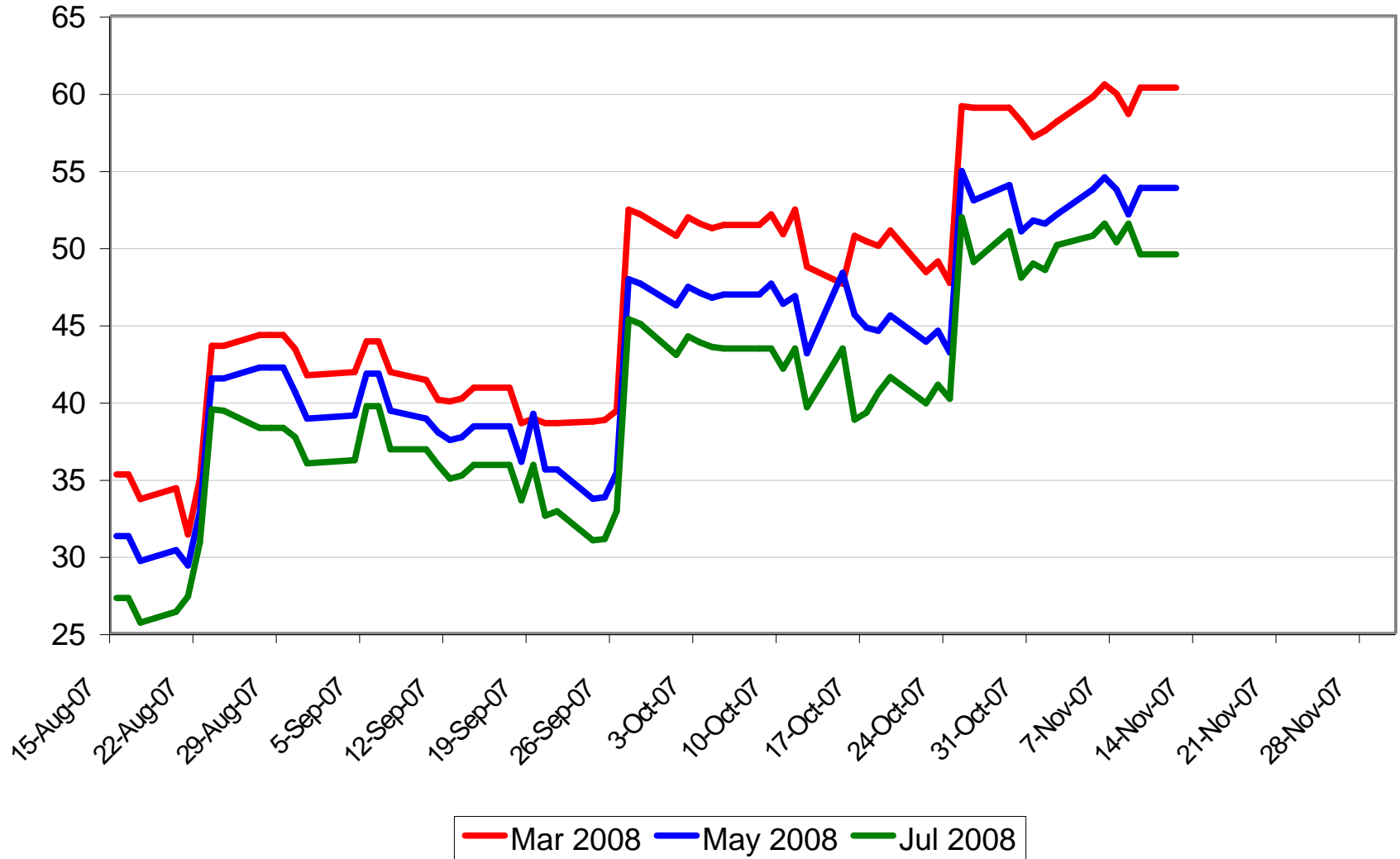
\$Cdn/tonne



2007-08 Std Sel Six-Row Basis Levels

\$ per tonne above WCE W. Barley Futures

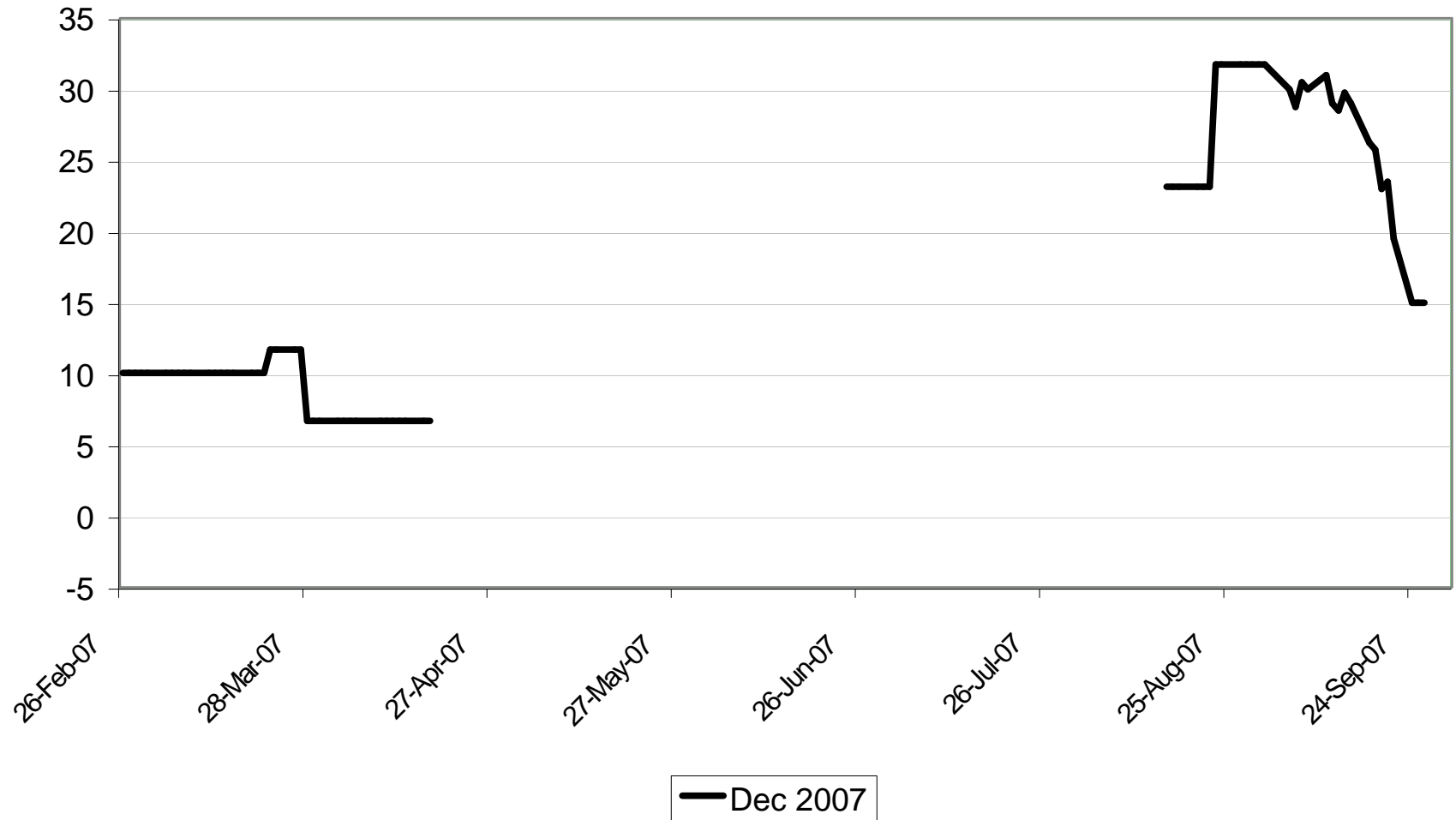
\$Cdn/tonne



2007-08 Feed Barley Basis Levels - Pool A

\$ per tonne basis WCE W. Barley Futures

\$Cdn/tonne



2007-08 Feed Barley Basis Levels - Pool A

\$ per tonne basis WCE W. Barley Futures

\$Cdn/tonne

