

Table 1/Tableau 1
Respiratory Virus Detections/Isolations for the week ending July 22, 2006 (Reporting Week 200629)
Détection/isolement de virus des voies respiratoires pour la semaine se terminant le 22 juillet 2006 (Code hebdomadaire 200629)

Reporting Laboratory Laboratoire rapporteur	Flu/Grippe Test	Flu/Grippe A Pos.	Flu/Grippe B Pos.	R.S.V. Test	R.S.V. Pos.	PIV Test	PIV 1 Pos.	PIV 2 Pos.	PIV 3 Pos.	PIV 4 Pos.	Other/Autre PIV Pos.	Adeno Test	Adeno Pos.
Newfoundland./Terre-Neuve	4	0	0	2	0	2	0	0	0	0	0	2	0
Prince Edward Island./ Île-du-Prince-Édouard	1	0	0	1	0	1	0	0	0	0	0	1	0
Nova Scotia/Nouvelle-Écosse	9	0	0	9	0	9	0	0	0	0	0	9	0
New Brunswick/Nouveau-Brunswick	8	0	0	4	1	4	0	0	1	0	0	6	0
Atlantic/Atlantique	22	0	0	16	1	16	0	0	1	0	0	18	0
Région Nord-Est	4	0	0	5	0	0	0	0	0	0	0	0	0
Québec-Chaudière-Appalaches	28	0	0	35	1	28	0	0	1	0	0	35	0
Centre-du-Québec	2	0	0	6	1	3	0	0	0	0	0	3	0
Montréal-Laval	79	0	0	107	0	107	2	0	6	0	0	113	3
Ouest du Québec	1	0	0	0	0	0	0	0	0	0	0	0	0
Montérégie	2	0	0	2	0	0	0	0	0	0	0	0	0
Province of/de Québec	116	0	0	155	2	138	2	0	7	0	0	151	3
Ottawa P.H.L.	3	0	0	0	0	0	0	0	0	0	0	0	0
CHEO/HEEO - Ottawa	-	-	-	-	-	-	-	-	-	-	-	-	-
Kingston	5	0	0	5	0	5	0	0	1	0	0	5	0
Toronto Medical Laboratory	-	-	-	-	-	-	-	-	-	-	-	-	-
C.P.H.L. - Toronto	64	0	0	70	1	61	0	0	6	0	0	61	1
Sick Kids/Hospital - Toronto	1	0	0	1	1	46	0	0	3	0	0	46	1
Sunnybrook & Women's College HSC	5	0	0	5	0	5	0	0	0	0	0	5	0
Sault Ste. Marie	0	0	0	0	0	0	0	0	0	0	0	0	0
Timmins	3	0	0	3	0	3	0	0	0	0	0	3	0
St. Joseph's - London	9	0	0	9	0	9	0	0	0	0	0	9	0
London P.H.L.	34	0	0	34	0	34	0	0	0	0	0	34	0
Orillia P.H.L.	3	0	0	3	0	3	0	0	0	0	0	3	0
Windsor	5	0	0	5	0	5	0	0	0	0	0	5	0
Thunder Bay	1	0	0	1	0	1	0	0	0	0	0	1	0
Sudbury P.H.L.	2	0	0	2	0	2	0	0	0	0	0	2	0
Hamilton P.H.L.	3	0	0	0	0	0	0	0	0	0	0	0	0
Peterborough P.H.L.	4	0	0	4	1	4	0	0	0	0	0	4	0
Province of/de l'Ontario	142	0	0	142	3	178	0	0	10	0	0	178	2
Manitoba	36	0	0	40	1	36	0	0	0	0	0	36	1
Regina	47	0	0	47	1	47	0	0	1	0	0	47	1
Saskatoon	17	0	0	12	4	17	0	0	0	0	0	17	0
Province of/de la Saskatchewan	64	0	0	59	5	64	0	0	1	0	0	64	1
Calgary	114	0	0	38	0	38	0	0	0	0	3	32	2
Edmonton	146	0	0	146	8	146	0	0	0	0	33	88	9
Province of/de l'Alberta	260	0	0	184	8	184	0	0	0	0	36	120	11
Prairies	360	0	0	283	14	284	0	0	1	0	36	220	13
British Columbia/Colombie-Britannique	14	0	0	14	0	14	0	0	1	0	0	14	0
CANADA	654	0	0	610	20	630	2	0	20	0	36	581	18

Also available at: <http://www.phac-aspc.gc.ca/bid-bmi/dsd-dsm/rvdi-divr/index-html>

Aussi disponible sur le site: http://www.phac-aspc.gc.ca/bid-bmi/dsd-dsm/rvdi-divr/index_f.html

Table 2/Tableau 2

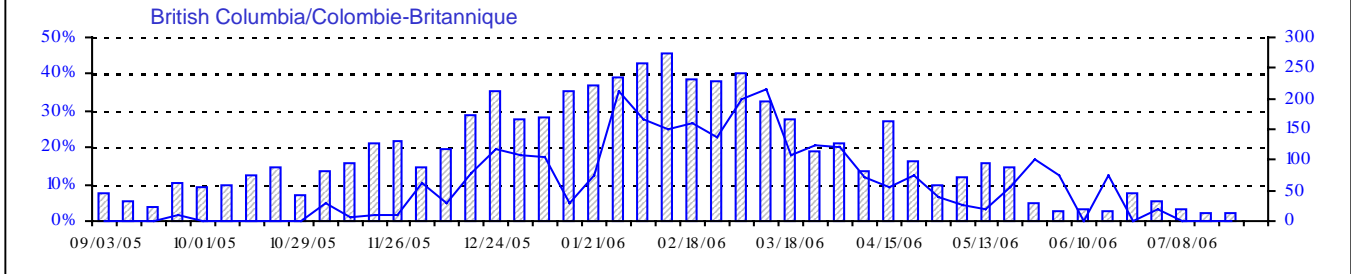
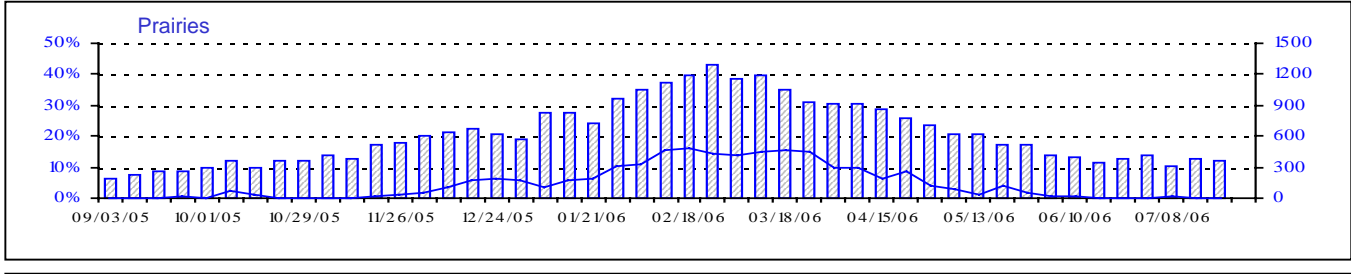
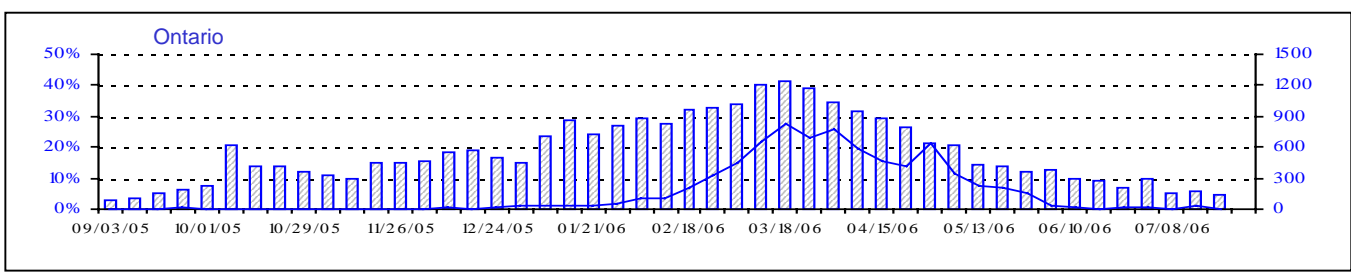
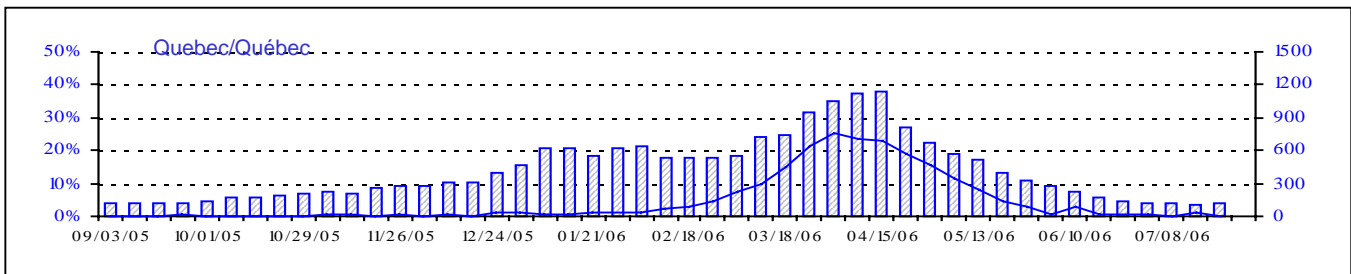
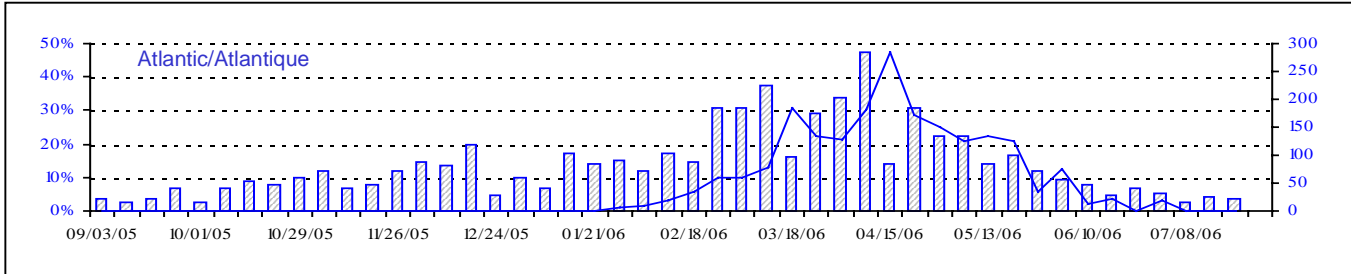
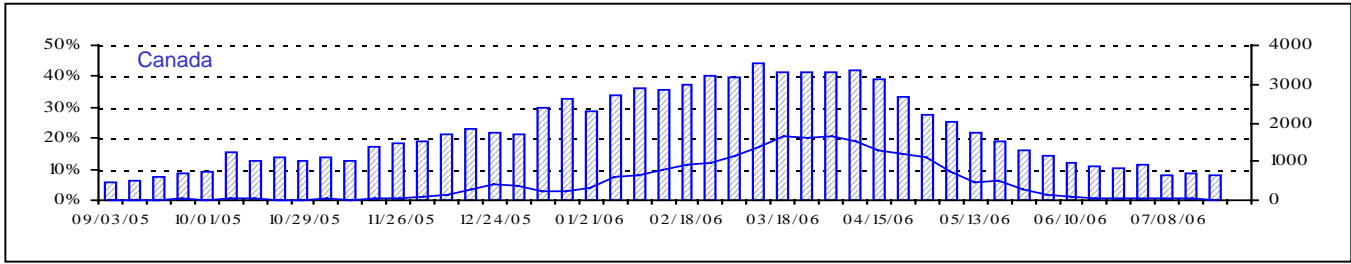
Respiratory Virus Detections/Isolations for the period August 28, 2005 - July 22, 2006
 Détection/isolément de virus des voies respiratoires pour la période du 28 août 2005 - 22 juillet 2006
 (Reporting Weeks 200535 -200629/Code hebdomadaire 200535-200629)

Reporting Laboratory Laboratoire rapporteur	Flu/Grippe Test	Flu/Grippe A Pos.	Flu/Grippe B Pos.	R.S.V. Test	R.S.V. Pos.	PIV Test	PIV 1 Pos.	PIV 2 Pos.	PIV 3 Pos.	PIV 4 Pos.	Other/Autre PIV Pos.	Adeno Test	Adeno Pos.
Newfoundland./Terre-Neuve	1048	44	34	353	52	112	0	0	1	0	0	147	5
Prince Edward Island./ Île-du-Prince-Édouard	143	5	3	312	66	143	1	1	1	0	1	138	18
Nova Scotia/Nouvelle-Écosse	1127	27	89	1126	71	865	28	4	10	0	0	865	27
New Brunswick/Nouveau-Brunswick	1608	81	198	1055	18	1015	7	2	10	0	0	1022	26
Atlantic/Atlantique	3926	157	324	2846	207	2135	36	7	22	0	1	2172	76
Région Nord-Est	1552	159	57	539	107	0	0	0	0	0	0	2	0
Québec-Chaudière-Appalaches	3307	165	41	3812	299	2305	35	16	14	3	0	3192	128
Centre-du-Québec	2978	374	76	1379	266	333	2	0	1	0	0	340	12
Montréal-Laval	9772	500	41	9946	1278	7948	81	48	137	6	0	8305	169
Ouest du Québec	126	163	36	457	128	0	0	0	0	0	0	0	0
Montréal	920	96	7	559	159	0	0	0	0	0	0	0	0
Province of/de Québec	18655	1457	258	16692	2237	10586	118	64	152	9	0	11839	309
Ottawa P.H.L.	190	18	4	109	4	0	0	0	0	0	0	0	0
CHEO/HEEO - Ottawa	2126	156	31	2116	343	2116	6	0	6	0	0	2116	14
Kingston	1409	100	47	1409	75	1409	20	26	7	0	0	1409	5
Toronto Medical Laboratory	1380	38	16	1376	58	1378	6	1	8	0	2	1380	5
C.P.H.L. - Toronto	8288	354	333	8844	423	7639	118	71	58	3	0	7645	65
Sick Kids' Hospital - Toronto	3359	122	152	3727	320	4183	51	28	56	0	0	4183	42
Sunnybrook & Women's College HSC	535	18	5	535	24	535	0	5	9	0	0	535	0
Sault Ste. Marie	230	15	13	232	9	230	6	0	2	0	0	230	2
Timmins	472	10	27	472	13	462	21	2	5	0	0	466	7
St.Joseph's-London	877	22	9	877	148	877	3	3	1	0	17	877	7
London P.H.L.	3127	185	229	3127	187	3127	80	37	14	0	0	3127	11
Orillia P.H.L.	1272	68	56	1272	47	1272	32	31	11	0	0	1272	23
Windsor	553	44	15	521	4	423	1	2	1	0	0	417	3
Thunder Bay	254	7	12	173	4	254	13	4	1	0	0	254	7
Sudbury P.H.L.	422	10	16	422	19	422	14	9	0	0	0	443	4
Hamilton P.H.L.	416	18	1	506	36	343	6	0	0	0	0	323	0
Peterborough P.H.L.	1138	71	93	1138	103	1138	26	16	7	0	0	1138	7
Province of/de l'Ontario	26048	1256	1059	26856	1817	25808	403	235	186	3	19	25815	202
Manitoba	2421	63	27	2490	89	2228	35	3	9	0	1	2228	49
Regina	5321	309	241	5321	222	5321	156	4	8	3	0	5321	145
Saskatoon	1009	59	42	840	89	1009	0	0	0	0	28	1009	18
Province of/de la Saskatchewan	6330	368	283	6161	311	6330	156	4	8	3	28	6330	163
Calgary	6605	240	244	4921	211	4911	0	0	0	0	157	3992	172
Edmonton	13937	500	366	14229	837	13810	9	0	0	0	1012	6661	534
Province of/de l'Alberta	20542	740	610	19150	1048	18721	9	0	0	0	1169	10653	706
Prairies	29293	1171	920	27801	1448	27279	200	7	17	3	1198	19211	918
British Columbia/Colombie-Britannique	5208	483	334	5208	43	5208	62	5	12	0	0	5208	48
CANADA	83130	4524	2895	79403	5752	71016	819	318	389	15	1218	64245	1553

Also available at: <http://www.phac-aspc.gc.ca/bid-bmi/dsd-dsm/rvdi-divr/index.html>

Aussi disponible sur le site: http://www.phac-aspc.gc.ca/bid-bmi/dsd-dsm/rvdi-divr/index_f.html

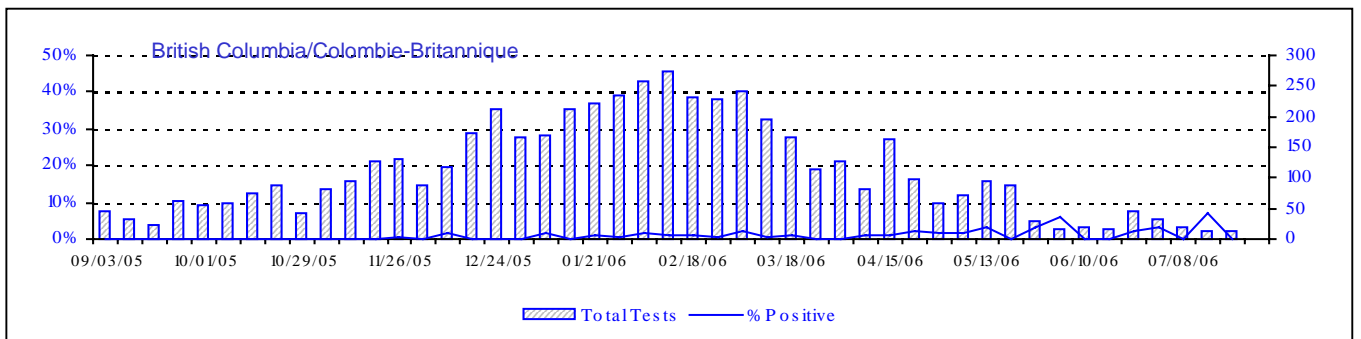
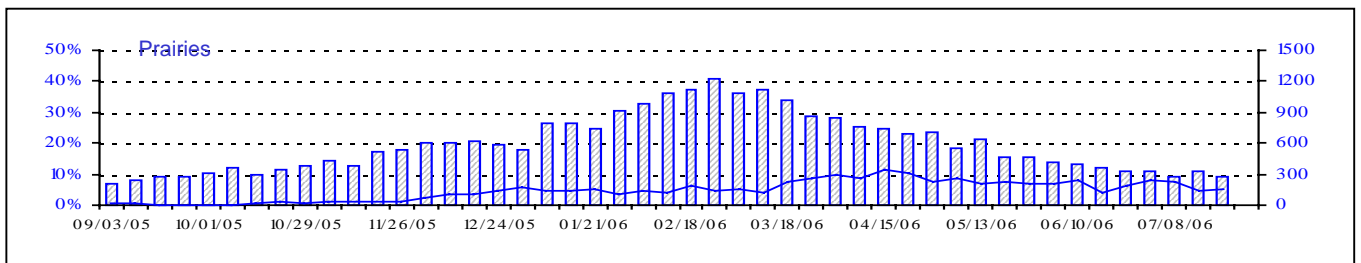
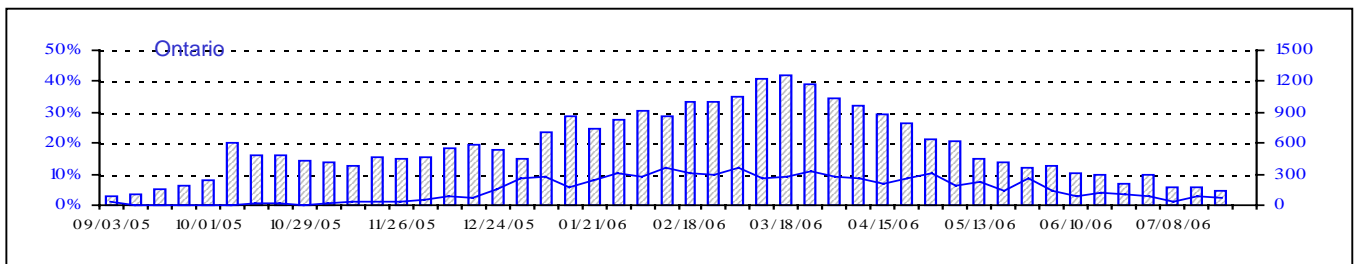
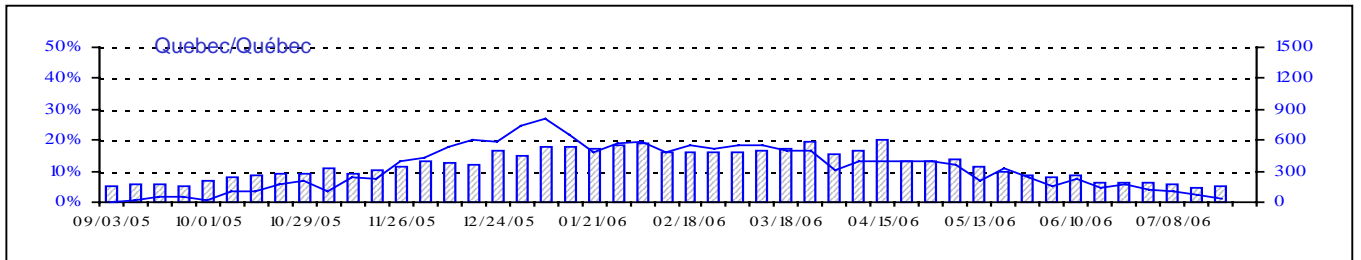
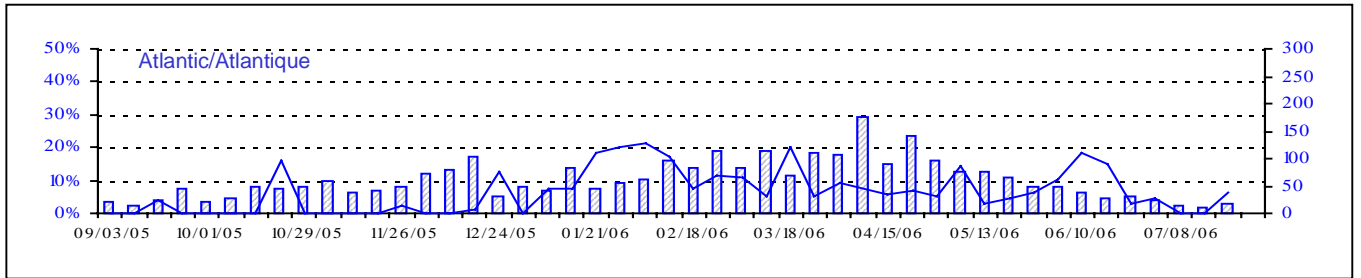
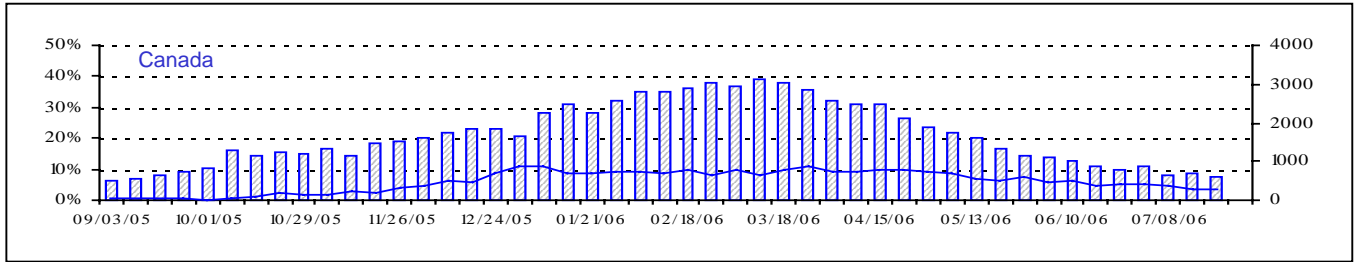
Positive Influenza Tests (%) in Canada by Region by Week of Report
 Détection du virus grippal au Canada, tests positifs (%) par région
 par semaine de déclaration



▨ Total Tests — % Tests Positive

Total Tests Total

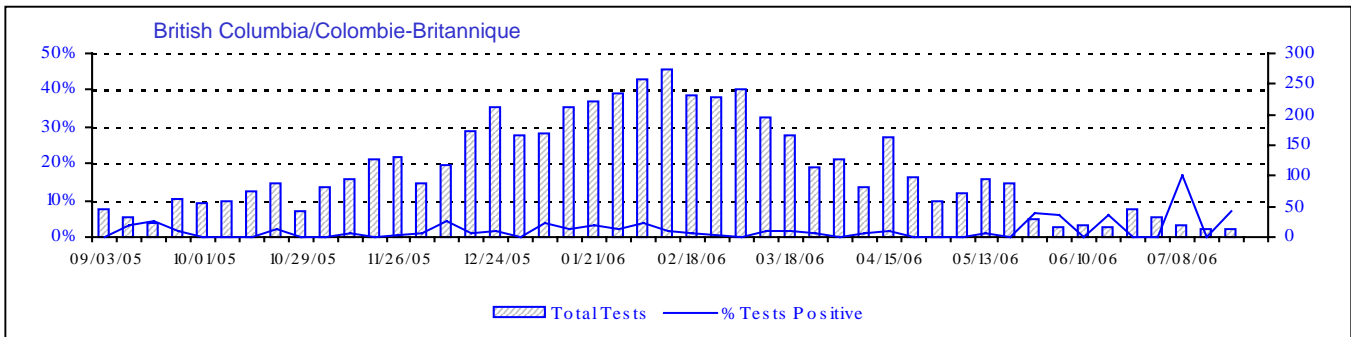
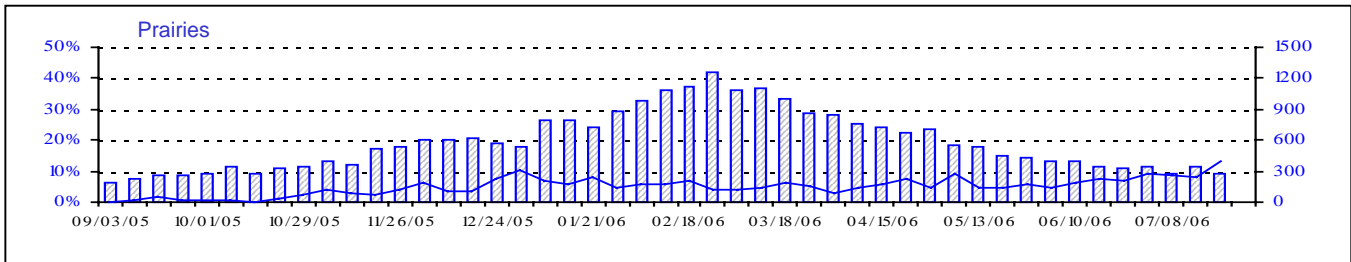
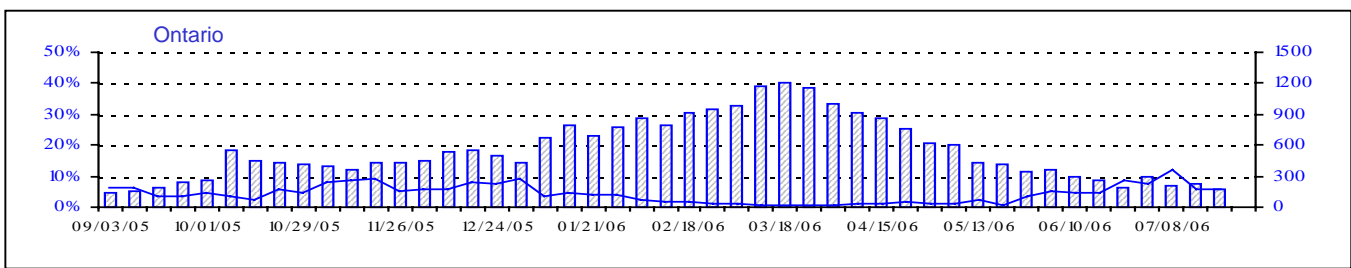
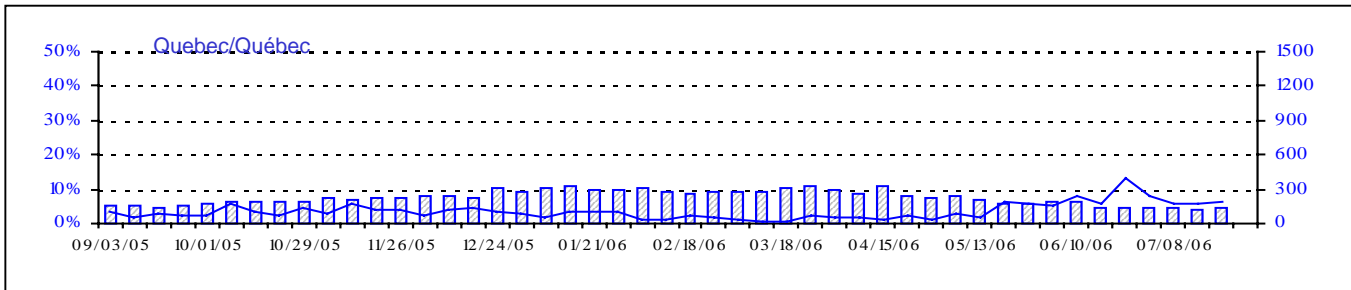
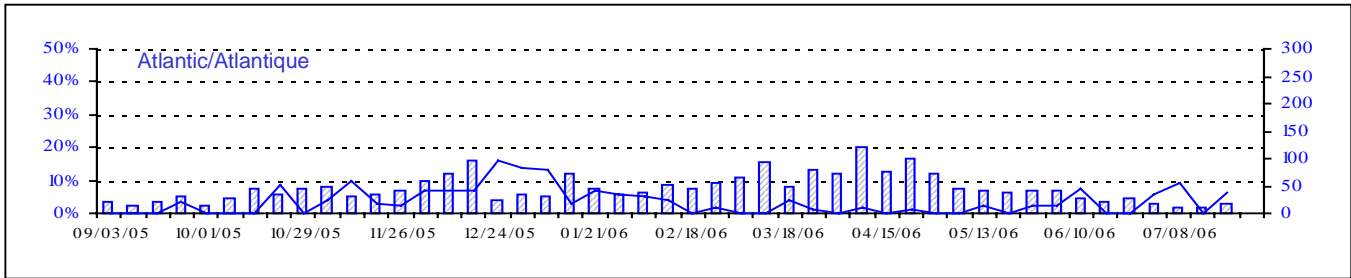
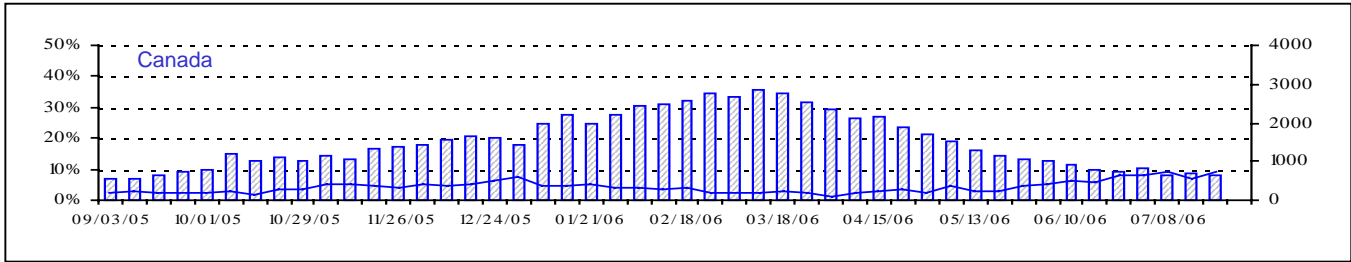
Positive RSV Tests (%) in Canada by Region by Week of Report
 Détection du virus respiratoire syncytial au Canada, tests positifs (%) par région
 par semaine de déclaration



Total Tests Total

▨ Total Tests — % Positive

Positive Parainfluenza Tests (%) in Canada by Region by Week of Report
 Détection du virus parainfluenza au Canada, tests positifs (%) par région
 par semaine de déclaration



Total Tests Total

▨ Total Tests — % Tests Positive

Positive Adenovirus Tests (%) in Canada by Region by Week of Report

Détection des adénovirus au Canada, tests positifs (%) par région par semaine de déclaration

