

Table 1/Tableau 1
 Respiratory Virus Detections/Isolations for the week ending August 19, 2006 (Reporting Week 200633)
 Détection/isolement de virus des voies respiratoires pour la semaine se terminant le 19 août 2006 (Code hebdomadaire 200633)

| Reporting Laboratory Laboratoire rapporteur | Flu/Grippe Test | Flu/Grippe A Pos. | Flu/Grippe B Pos. | R.S.V. Test | R.S.V. Pos. | PIV Test | PIV 1 Pos. | PIV 2 Pos. | PIV 3 Pos. | PIV 4 Pos. | Other/Autre PIV Pos. | Adeno Test | Adeno Pos. |
|--|--------------------|----------------------|----------------------|----------------|----------------|-------------|---------------|---------------|---------------|---------------|-------------------------|---------------|---------------|
| Newfoundland./Terre-Neuve | 6 | 0 | 0 | 5 | 0 | 4 | 0 | 0 | 0 | 0 | 0 | 4 | 0 |
| Prince Edward Island./ Île-du-Prince-Édouard | 1 | 0 | 0 | 1 | 0 | 1 | 0 | 0 | 0 | 0 | 0 | 1 | 0 |
| Nova Scotia/Nouvelle-Écosse | 9 | 0 | 0 | 9 | 0 | 9 | 0 | 0 | 0 | 0 | 0 | 9 | 0 |
| New Brunswick/Nouveau-Brunswick | 5 | 0 | 0 | 3 | 0 | 3 | 0 | 0 | 0 | 0 | 0 | 3 | 0 |
| Atlantic/Atlantique | 21 | 0 | 0 | 18 | 0 | 17 | 0 | 0 | 0 | 0 | 0 | 17 | 0 |
| Région Nord-Est | 0 | 0 | 0 | 6 | 1 | 0 | 0 | 0 | 0 | 0 | 0 | 0 | 0 |
| Québec-Chaudière-Appalaches | 32 | 0 | 0 | 34 | 1 | 32 | 0 | 0 | 0 | 2 | 0 | 36 | 0 |
| Centre-du-Québec | 7 | 0 | 0 | 6 | 0 | 6 | 0 | 0 | 0 | 0 | 0 | 6 | 0 |
| Montréal-Laval | 90 | 0 | 0 | 128 | 0 | 128 | 0 | 0 | 2 | 2 | 0 | 132 | 1 |
| Ouest du Québec | 0 | 0 | 0 | 3 | 0 | 0 | 0 | 0 | 0 | 0 | 0 | 0 | 0 |
| Montérégie | 0 | 0 | 0 | 0 | 0 | 0 | 0 | 0 | 0 | 0 | 0 | 0 | 0 |
| Province of/de Québec | 129 | 0 | 0 | 177 | 2 | 166 | 0 | 0 | 2 | 4 | 0 | 174 | 1 |
| Ottawa P.H.L. | 0 | 0 | 0 | 1 | 0 | 0 | 0 | 0 | 0 | 0 | 0 | 0 | 0 |
| CHEO/HEEO - Ottawa | - | - | - | - | - | - | - | - | - | - | - | - | - |
| Kingston | 3 | 0 | 0 | 3 | 0 | 3 | 0 | 0 | 0 | 0 | 0 | 3 | 0 |
| Toronto Medical Laboratory | 14 | 0 | 0 | 14 | 0 | 14 | 0 | 0 | 0 | 0 | 0 | 13 | 0 |
| C.P.H.L. - Toronto | 45 | 0 | 0 | 47 | 0 | 45 | 1 | 0 | 3 | 0 | 0 | 45 | 2 |
| Sick Kids/Hospital - Toronto | 43 | 0 | 0 | 43 | 0 | 43 | 0 | 0 | 3 | 0 | 0 | 43 | 0 |
| Sunnybrook & Women's College HSC | 9 | 0 | 0 | 9 | 0 | 9 | 0 | 0 | 4 | 0 | 0 | 9 | 0 |
| Sault Ste. Marie | 0 | 0 | 0 | 0 | 0 | 0 | 0 | 0 | 0 | 0 | 0 | 0 | 0 |
| Timmins | 0 | 0 | 0 | 0 | 0 | 0 | 0 | 0 | 0 | 0 | 0 | 0 | 0 |
| St. Joseph's - London | 5 | 0 | 0 | 5 | 0 | 5 | 0 | 0 | 0 | 0 | 0 | 5 | 0 |
| London P.H.L. | - | - | - | - | - | - | - | - | - | - | - | - | - |
| Orillia P.H.L. | 4 | 0 | 0 | 4 | 0 | 4 | 0 | 0 | 1 | 0 | 0 | 4 | 0 |
| Windsor | 6 | 0 | 0 | 6 | 0 | 6 | 0 | 0 | 0 | 0 | 0 | 6 | 0 |
| Thunder Bay | 0 | 0 | 0 | 0 | 0 | 0 | 0 | 0 | 0 | 0 | 0 | 0 | 0 |
| Sudbury P.H.L. | 1 | 0 | 0 | 1 | 0 | 1 | 0 | 0 | 0 | 0 | 0 | 1 | 0 |
| Hamilton P.H.L. | 6 | 0 | 0 | 7 | 0 | 6 | 0 | 0 | 0 | 1 | 0 | 6 | 0 |
| Peterborough P.H.L. | 2 | 0 | 0 | 2 | 0 | 2 | 0 | 0 | 0 | 0 | 0 | 2 | 0 |
| Province of/de l'Ontario | 138 | 0 | 0 | 142 | 0 | 138 | 1 | 0 | 11 | 1 | 0 | 137 | 2 |
| Manitoba | 30 | 0 | 0 | 32 | 1 | 30 | 0 | 0 | 2 | 0 | 0 | 30 | 0 |
| Regina | 30 | 0 | 0 | 30 | 0 | 30 | 0 | 1 | 4 | 0 | 0 | 30 | 0 |
| Saskatoon | 16 | 0 | 0 | 13 | 3 | 16 | 0 | 0 | 0 | 0 | 1 | 16 | 0 |
| Province of/de la Saskatchewan | 46 | 0 | 0 | 43 | 3 | 46 | 0 | 1 | 4 | 0 | 1 | 46 | 0 |
| Calgary | 200 | 1 | 0 | 98 | 1 | 98 | 0 | 0 | 0 | 0 | 5 | 84 | 1 |
| Edmonton | 50 | 0 | 0 | 50 | 5 | 50 | 0 | 0 | 0 | 0 | 7 | 4 | 5 |
| Province of/de l'Alberta | 250 | 1 | 0 | 148 | 6 | 148 | 0 | 0 | 0 | 0 | 12 | 88 | 6 |
| Prairies | 326 | 1 | 0 | 223 | 10 | 224 | 0 | 1 | 6 | 0 | 13 | 164 | 6 |
| British Columbia/Colombie-Britannique | 10 | 0 | 0 | 10 | 0 | 10 | 0 | 0 | 0 | 4 | 0 | 10 | 0 |
| CANADA | 624 | 1 | 0 | 570 | 12 | 555 | 1 | 1 | 19 | 9 | 13 | 502 | 9 |

Also available at: <http://www.phac-aspc.gc.ca/bid-bmi/dsd-dsm/rvdi-divr/index-html>

Aussi disponible sur le site: http://www.phac-aspc.gc.ca/bid-bmi/dsd-dsm/rvdi-divr/index_f.html

Table 2/Tableau 2

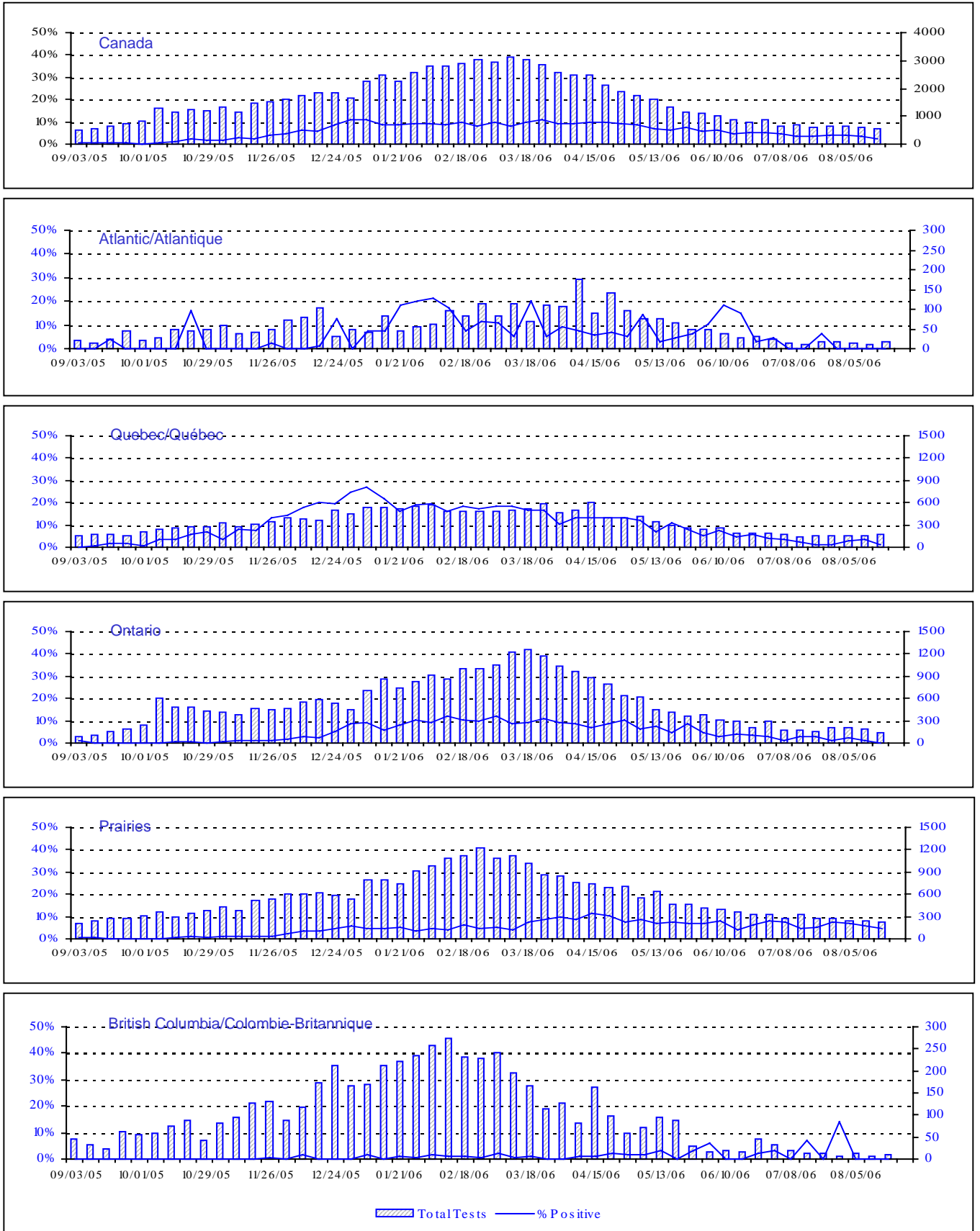
Respiratory Virus Detections/Isolations for the period August 28, 2005 - August 19, 2006
 Détection/isolement de virus des voies respiratoires pour la période du 28 août 2005 - 19 août 2006
 (Reporting Weeks 200535 -200633/Code hebdomadaire 200535-200633)

| Reporting Laboratory Laboratoire rapporteur | Flu/Grippe Test | Flu/Grippe A Pos. | Flu/Grippe B Pos. | R.S.V. Test | R.S.V. Pos. | PIV Test | PIV 1 Pos. | PIV 2 Pos. | PIV 3 Pos. | PIV 4 Pos. | Other/Autre PIV Pos. | Adeno Test | Adeno Pos. |
|--|--------------------|----------------------|----------------------|----------------|----------------|-------------|---------------|---------------|---------------|---------------|-------------------------|---------------|---------------|
| Newfoundland./Terre-Neuve | 1060 | 44 | 34 | 361 | 52 | 119 | 0 | 0 | 1 | 0 | 0 | 157 | 5 |
| Prince Edward Island./ Île-du-Prince-Édouard | 150 | 5 | 3 | 319 | 66 | 150 | 1 | 2 | 1 | 0 | 1 | 145 | 18 |
| Nova Scotia/Nouvelle-Écosse | 1154 | 27 | 89 | 1153 | 71 | 892 | 28 | 4 | 10 | 0 | 0 | 892 | 27 |
| New Brunswick/Nouveau-Brunswick | 1626 | 81 | 198 | 1070 | 18 | 1026 | 7 | 2 | 10 | 0 | 0 | 1043 | 26 |
| Atlantic/Atlantique | 3990 | 157 | 324 | 2903 | 207 | 2187 | 36 | 8 | 22 | 0 | 1 | 2237 | 76 |
| Région Nord-Est | 1555 | 159 | 57 | 552 | 109 | 0 | 0 | 0 | 0 | 0 | 0 | 2 | 0 |
| Québec-Chaudière-Appalaches | 3405 | 165 | 41 | 3933 | 301 | 2403 | 35 | 16 | 17 | 5 | 0 | 3307 | 129 |
| Centre-du-Québec | 3000 | 374 | 76 | 1404 | 266 | 350 | 2 | 0 | 1 | 0 | 0 | 357 | 12 |
| Montréal-Laval | 10083 | 500 | 41 | 10398 | 1287 | 8399 | 83 | 48 | 152 | 8 | 0 | 8790 | 177 |
| Ouest du Québec | 1126 | 163 | 36 | 463 | 128 | 0 | 0 | 0 | 0 | 0 | 0 | 0 | 0 |
| Montréal | 925 | 96 | 7 | 563 | 159 | 0 | 0 | 0 | 0 | 0 | 0 | 0 | 0 |
| Province of/de Québec | 20094 | 1457 | 258 | 17313 | 2250 | 11152 | 120 | 64 | 170 | 13 | 0 | 12456 | 318 |
| Ottawa P.H.L. | 190 | 18 | 4 | 110 | 4 | 0 | 0 | 0 | 0 | 0 | 0 | 0 | 0 |
| CHEO/HEEO - Ottawa | 2126 | 156 | 31 | 2116 | 343 | 2116 | 6 | 0 | 6 | 0 | 0 | 2116 | 14 |
| Kingston | 1418 | 100 | 47 | 1418 | 75 | 1418 | 20 | 26 | 8 | 0 | 0 | 1418 | 5 |
| Toronto Medical Laboratory | 1454 | 38 | 16 | 1450 | 59 | 1452 | 6 | 1 | 11 | 0 | 2 | 1453 | 5 |
| C.P.H.L. - Toronto | 8570 | 356 | 333 | 9128 | 428 | 7900 | 121 | 71 | 69 | 3 | 0 | 7906 | 68 |
| Sick Kids' Hospital - Toronto | 3527 | 122 | 152 | 3895 | 324 | 4351 | 51 | 28 | 70 | 0 | 0 | 4351 | 42 |
| Sunnybrook & Women's College HSC | 572 | 18 | 5 | 572 | 24 | 572 | 0 | 5 | 20 | 0 | 0 | 572 | 0 |
| Sault Ste. Marie | 230 | 15 | 13 | 232 | 9 | 230 | 6 | 0 | 2 | 0 | 0 | 230 | 2 |
| Timmins | 483 | 10 | 27 | 483 | 13 | 473 | 21 | 2 | 5 | 0 | 0 | 477 | 7 |
| St.Joseph's-London | 900 | 22 | 9 | 900 | 148 | 900 | 3 | 3 | 2 | 0 | 17 | 900 | 7 |
| London P.H.L. | 3172 | 185 | 229 | 3172 | 187 | 3172 | 80 | 37 | 19 | 0 | 0 | 3172 | 11 |
| Orillia P.H.L. | 1302 | 68 | 56 | 1302 | 47 | 1302 | 32 | 31 | 12 | 0 | 0 | 1302 | 23 |
| Windsor | 565 | 44 | 15 | 533 | 4 | 435 | 1 | 2 | 1 | 0 | 0 | 429 | 3 |
| Thunder Bay | 258 | 7 | 12 | 174 | 4 | 258 | 13 | 4 | 1 | 0 | 0 | 258 | 7 |
| Sudbury P.H.L. | 423 | 10 | 16 | 423 | 19 | 423 | 14 | 9 | 1 | 0 | 0 | 447 | 4 |
| Hamilton P.H.L. | 460 | 18 | 1 | 553 | 36 | 387 | 6 | 0 | 3 | 1 | 0 | 367 | 0 |
| Peterborough P.H.L. | 1151 | 71 | 93 | 1151 | 104 | 1151 | 26 | 16 | 7 | 0 | 0 | 1151 | 7 |
| Province of/de l'Ontario | 26801 | 1258 | 1059 | 27612 | 1828 | 26540 | 406 | 235 | 237 | 4 | 19 | 26549 | 205 |
| Manitoba | 2517 | 63 | 27 | 2589 | 93 | 2324 | 35 | 3 | 16 | 0 | 1 | 2324 | 50 |
| Regina | 5487 | 309 | 241 | 5487 | 224 | 5487 | 156 | 6 | 17 | 3 | 0 | 5487 | 148 |
| Saskatoon | 1054 | 59 | 42 | 877 | 94 | 1054 | 0 | 0 | 0 | 0 | 32 | 1054 | 18 |
| Province of/de la Saskatchewan | 6541 | 368 | 283 | 6364 | 318 | 6541 | 156 | 6 | 17 | 3 | 32 | 6541 | 166 |
| Calgary | 6999 | 241 | 244 | 5116 | 212 | 5108 | 0 | 0 | 0 | 0 | 163 | 4161 | 174 |
| Edmonton | 14421 | 500 | 366 | 14715 | 886 | 14291 | 9 | 0 | 0 | 0 | 1059 | 6907 | 563 |
| Province of/de l'Alberta | 21420 | 741 | 610 | 19831 | 1098 | 19399 | 9 | 0 | 0 | 0 | 1222 | 11068 | 737 |
| Prairies | 30478 | 1172 | 920 | 28784 | 1509 | 28264 | 200 | 9 | 33 | 3 | 1255 | 19933 | 953 |
| British Columbia/Colombie-Britannique | 5245 | 483 | 334 | 5245 | 44 | 5245 | 62 | 5 | 19 | 4 | 0 | 5245 | 54 |
| CANADA | 86608 | 4527 | 2895 | 81857 | 5838 | 73388 | 824 | 321 | 481 | 24 | 1275 | 66420 | 1606 |

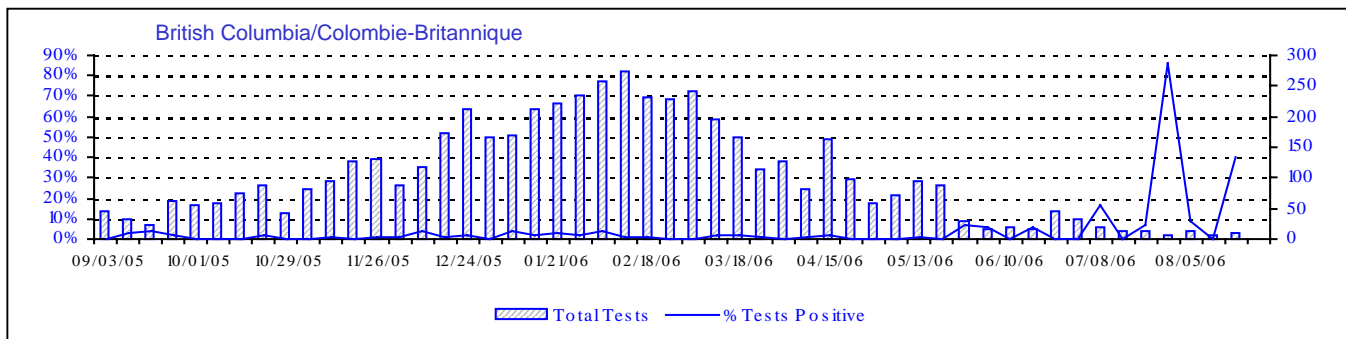
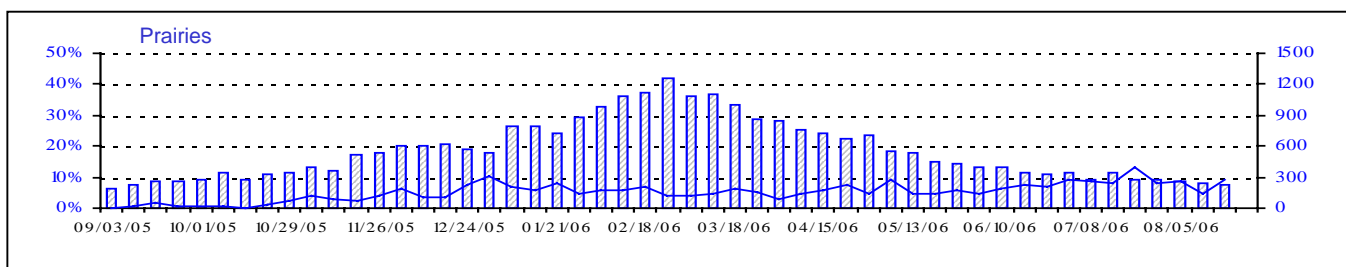
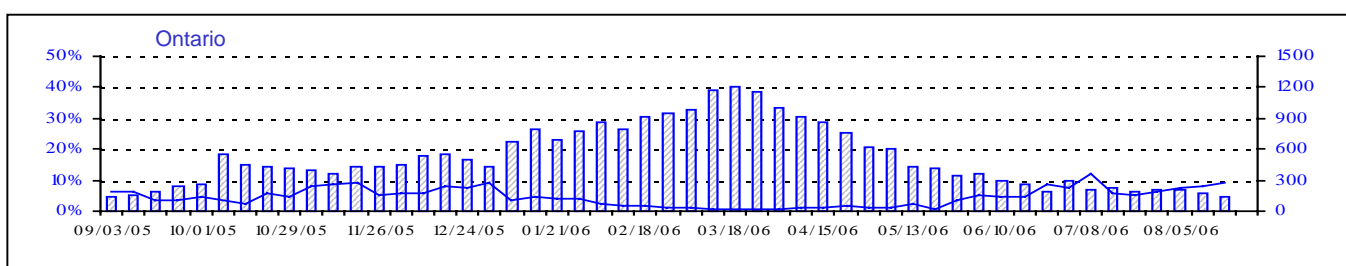
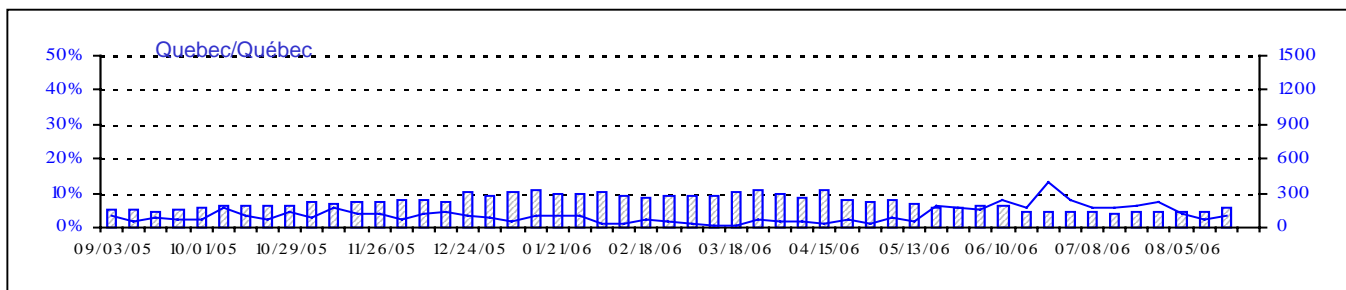
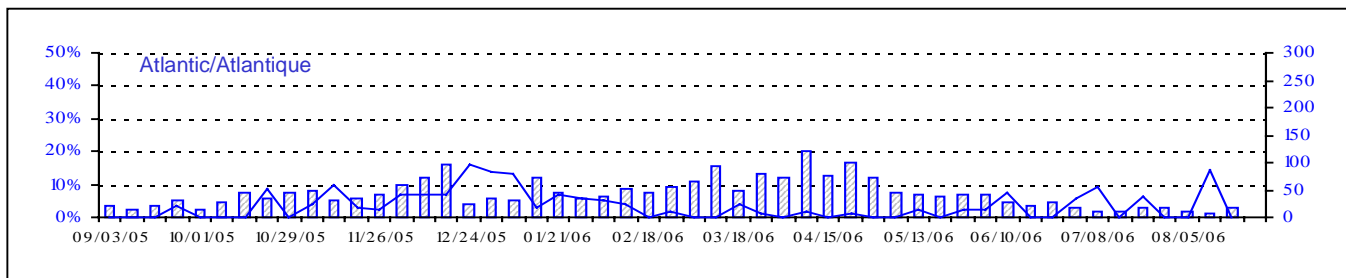
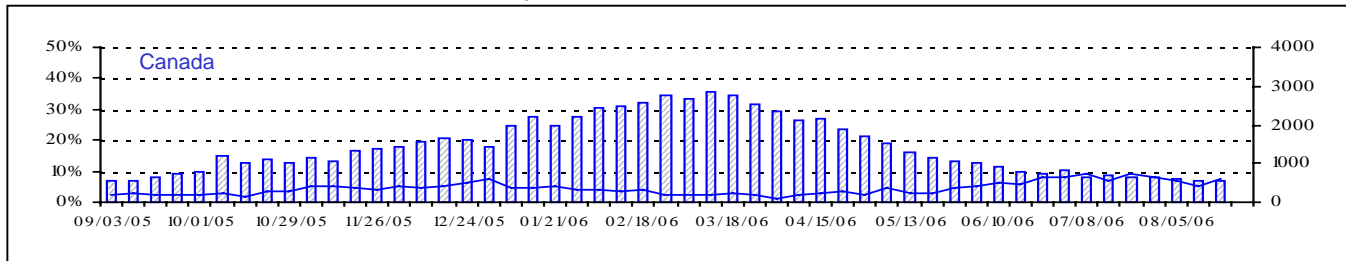
Also available at: <http://www.phac-aspc.gc.ca/bid-bmi/dsd-dsm/rvdi-divr/index.html>

Aussi disponible sur le site: http://www.phac-aspc.gc.ca/bid-bmi/dsd-dsm/rvdi-divr/index_f.html

Positive RSV Tests (%) in Canada by Region by Week of Report
 Détection du virus respiratoire syncytial au Canada, tests positifs (%) par région
 par semaine de déclaration



Positive Parainfluenza Tests (%) in Canada by Region by Week of Report
 Détection du virus parainfluenza au Canada, tests positifs (%) par région
 par semaine de déclaration



▨ Total Tests — % Tests Positive

Total Tests Total

Positive Adenovirus Tests (%) in Canada by Region by Week of Report
 Détection des adénovirus au Canada, tests positifs (%) par région
 par semaine de déclaration

