

Table 1/Tableau 1

Respiratory Virus Detections/Isolations for the week ending September 25, 2004 (Reporting Week 200439)
 Détection/isolement de virus des voies respiratoires pour la semaine se terminant le 25 septembre 2004(Code hebdomadaire 200439)

Reporting Laboratory Laboratoire rapporteur	Flu/Grippe Test	Flu/Grippe A Pos.	Flu/Grippe B Pos.	R.S.V. Test	R.S.V. Pos.	PIV Test	PIV 1 Pos.	PIV 2 Pos.	PIV 3 Pos.	PIV 4 Pos.	Other/Autre PIV Pos.	Adeno Test	Adeno Pos.
Nfld./T.-N.	3	0	0	3	0	1	0	0	0	0	0	1	0
P.E.I./ Î.-P.-É.	0	0	0	0	0	0	0	0	0	0	0	0	0
N.S./N.-É.	6	0	0	6	0	6	0	0	0	0	0	6	0
N.B./N.-B.	6	0	0	6	0	4	0	0	0	0	0	4	1
Atlantic/Atlantique	15	0	0	15	0	11	0	0	0	0	0	11	1
Région Nord-Est	2	0	0	7	0	0	0	0	0	0	0	0	0
Québec-Chaudière-Appalaches	21	0	0	9	0	21	0	0	0	0	0	23	2
Centre-du-Québec	1	0	0	2	0	1	0	0	0	0	0	1	0
Montréal-Laval	68	0	0	73	0	72	1	0	0	0	0	72	3
Ouest du Québec	2	0	0	2	0	0	0	0	0	0	0	0	0
Montérégie	0	0	0	2	0	0	0	0	0	0	0	0	0
Province of/de Québec	94	0	0	95	0	94	1	0	0	0	0	96	5
Ottawa P.H.L.	7	0	0	3	0	0	0	0	0	0	0	0	0
CHEO/HEEO - Ottawa	-	-	-	-	-	-	-	-	-	-	-	-	-
Kingston	11	0	0	11	0	11	0	0	0	0	0	11	0
Toronto Medical Laboratory	-	-	-	-	-	-	-	-	-	-	-	-	-
C.P.H.L. - Toronto	81	1	1	79	0	73	0	0	0	0	0	73	1
Sick Kids/Hospital - Toronto	0	0	0	88	1	88	0	0	0	0	0	88	1
Sunnybrook & Women's College HSC	6	0	0	6	0	6	0	0	0	0	0	6	0
Sault Ste. Marie	2	0	0	2	0	2	0	0	0	0	0	2	0
Timmins	3	0	0	3	0	3	0	0	0	0	0	3	0
St. Joseph's - London	4	0	0	4	0	4	0	0	0	0	0	4	0
London P.H.L.	26	0	0	26	0	26	0	0	0	0	0	26	0
Orillia P.H.L.	5	0	0	5	0	5	0	0	0	0	0	5	1
Windsor	13	0	0	13	0	13	0	0	0	0	0	13	0
Thunder Bay	2	0	0	1	0	2	0	0	1	0	0	2	0
Sudbury P.H.L.	2	0	0	2	0	2	0	0	0	0	0	2	0
Hamilton P.H.L.	0	0	0	0	0	0	0	0	0	0	0	0	0
Peterborough P.H.L.	7	0	0	7	0	7	0	0	0	0	0	7	0
Province of/de l'Ontario	169	1	1	250	1	242	0	0	1	0	0	242	3
Manitoba	47	0	0	50	0	47	0	0	0	0	0	47	1
Regina	63	0	0	63	0	63	0	3	0	0	0	63	0
Saskatoon	15	0	0	13	0	15	0	0	0	0	0	15	0
Province of/de la Saskatchewan	78	0	0	76	0	78	0	3	0	0	0	78	0
Calgary	42	0	0	42	0	48	0	0	0	0	0	40	1
Edmonton	114	0	0	131	0	107	0	0	0	0	0	79	1
Province of/de l'Alberta	156	0	0	173	0	155	0	0	0	0	0	119	2
Prairies	281	0	0	299	0	280	0	3	0	0	0	244	3
Vancouver, B.C./C.-B.	-	-	-	-	-	-	-	-	-	-	-	-	-
CANADA	559	1	1	659	1	627	1	3	1	0	0	593	12

Also available at: <http://www.hc-sc.gc.ca/pphb-dgspssp/bid-bmi/dsd-dsm/rvdi-divr/>

Aussi disponible sur le site: http://www.hc-sc.gc.ca/pphb-dgspssp/bid-bmi/dsd-dsm/rvdi-divr/index_f.html

Table 2/Tableau 2

Respiratory Virus Detections/Isolations for the period August 22, 2004 - September 25, 2004
 Détection/isolement de virus des voies respiratoires pour la période du 22 août 2004 - 25 septembre 2004
 (Reporting Weeks 200435 -200439/Code hebdomadaire 200435-200439)

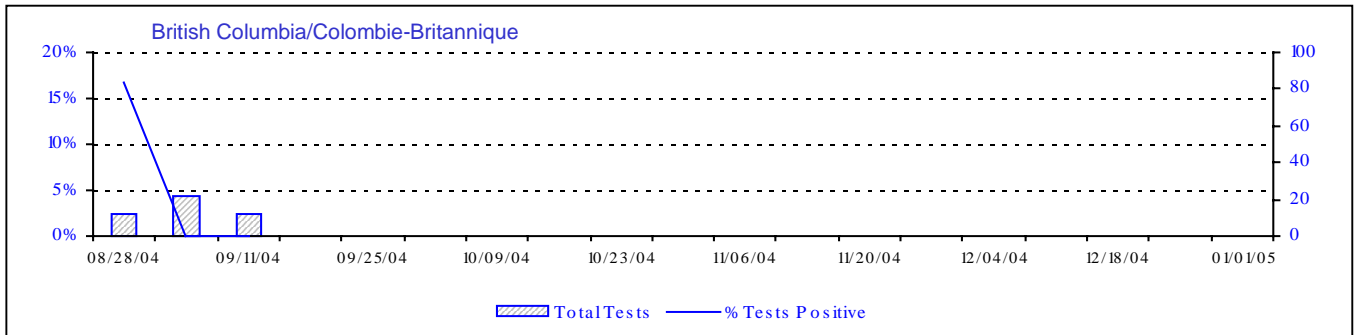
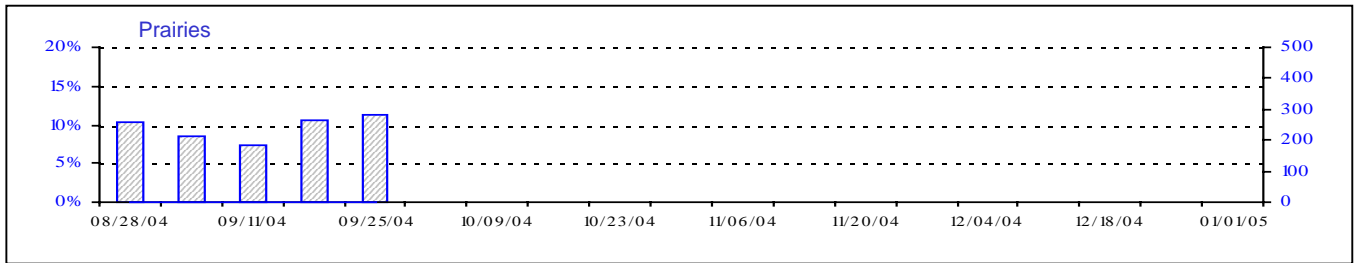
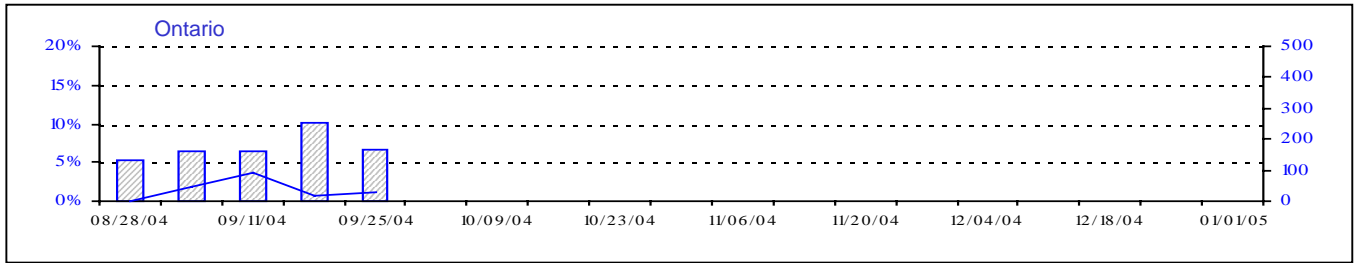
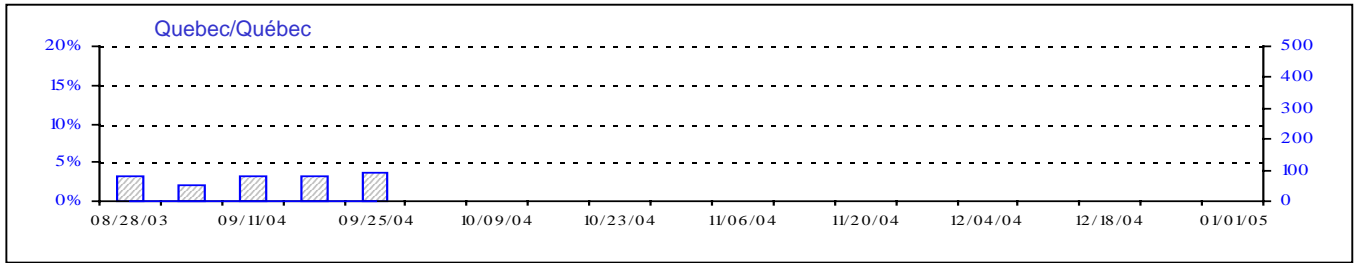
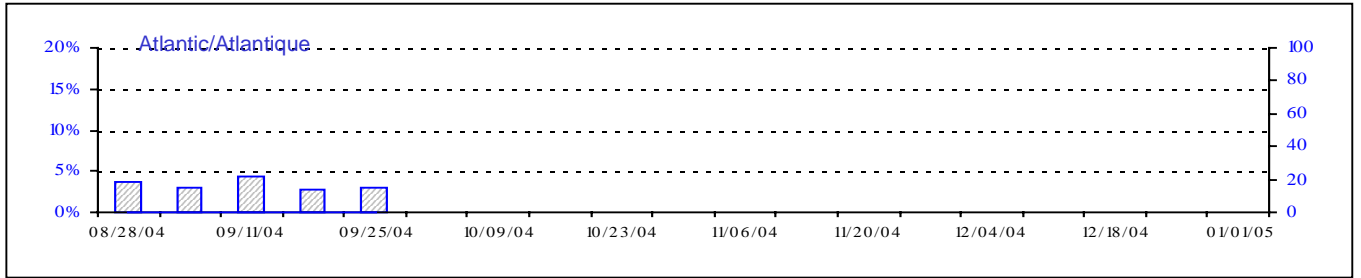
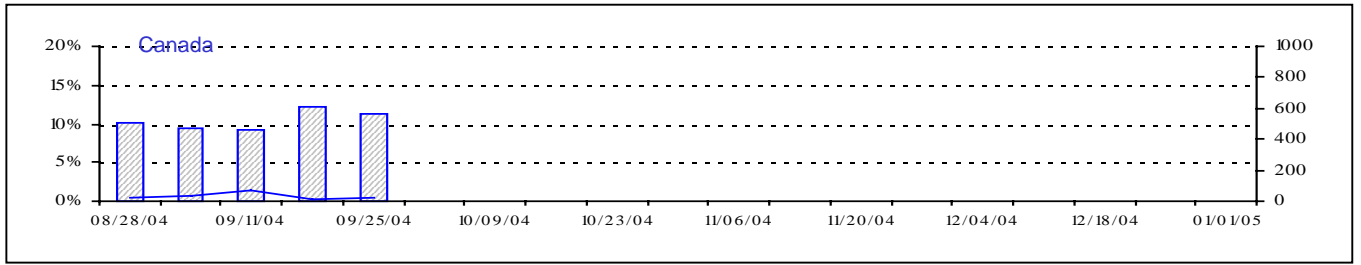
Reporting Laboratory Laboratoire rapporteur	Flu/Grippe Test	Flu/Grippe A Pos.	Flu/Grippe B Pos.	R.S.V. Test	R.S.V. Pos.	PIV Test	PIV 1 Pos.	PIV 2 Pos.	PIV 3 Pos.	PIV 4 Pos.	Other/Autre PIV Pos.	Adeno Test	Adeno Pos.
Nfld./T.-N.	14	0	0	17	1	11	0	0	0	0	0	11	0
P.E.I./Î.-P.-É.	0	0	0	0	0	0	0	0	0	0	0	0	0
N.S./N.-É.	23	0	0	23	0	23	0	0	1	0	0	23	0
N.B./N.-B.	47	0	0	39	0	33	0	0	0	0	0	33	1
Atlantic/Atlantique	84	0	0	79	1	67	0	0	1	0	0	67	1
Région Nord-Est	8	0	0	23	1	0	0	0	0	0	0	0	0
Québec-Chaudière-Appalaches	103	0	0	104	0	102	0	0	0	0	0	104	3
Centre-du-Québec	10	0	0	18	0	16	0	0	0	0	0	16	0
Montréal-Laval	268	0	0	304	2	296	1	0	0	0	0	297	12
Ouest du Québec	2	0	0	7	0	0	0	0	0	0	0	0	0
Montréal	1	0	0	5	1	0	0	0	0	0	0	0	0
Province of/de Québec	392	0	0	461	4	414	1	0	0	0	0	417	15
Ottawa P.H.L.	12	0	0	3	0	0	0	0	0	0	0	0	0
CHEO/HEEO - Ottawa	87	9	0	87	0	87	0	0	0	0	0	87	1
Kingston	48	1	1	48	0	48	0	0	1	0	0	48	0
Toronto Medical Laboratory	141	0	0	114	4	111	0	0	0	0	0	83	0
C.P.H.L. - Toronto	312	1	1	316	3	281	0	0	5	0	0	281	2
Sick Kids' Hospital - Toronto	0	0	0	89	1	292	2	0	1	0	0	292	2
Sunnybrook & Women's College HSC	24	0	0	24	0	24	0	0	0	0	0	24	0
Sault Ste. Marie	4	0	0	4	0	4	0	0	0	0	0	4	0
Timmins	7	0	0	7	0	7	0	0	0	0	0	7	0
St.Joseph's-London	24	0	0	24	0	24	0	0	0	0	0	24	0
London P.H.L.	86	0	0	86	0	86	0	0	0	0	0	86	0
Orillia P.H.L.	30	0	0	30	0	30	0	0	0	0	0	30	3
Windsor	47	0	0	47	0	47	0	0	0	0	0	47	0
Thunder Bay	17	0	0	11	0	17	0	0	1	0	0	17	0
Sudbury P.H.L.	8	0	0	8	0	8	0	0	0	0	0	8	0
Hamilton P.H.L.	9	0	0	9	0	0	0	0	0	0	0	0	0
Peterborough P.H.L.	21	0	0	21	0	21	0	0	0	0	0	21	0
Province of/de l'Ontario	877	11	2	928	8	1087	2	0	8	0	0	1059	8
Manitoba	174	0	0	183	1	174	0	0	2	0	0	174	5
Regina	253	0	0	253	3	253	0	1	0	0	0	253	5
Saskatoon	56	0	0	46	0	56	0	0	0	0	3	56	0
Province of/de la Saskatchewan	309	0	0	299	3	309	0	1	0	0	3	309	5
Calgary	157	0	0	157	0	173	0	3	0	0	6	152	7
Edmonton	567	0	0	613	0	545	0	0	0	0	4	396	8
Province of/de l'Alberta	724	0	0	770	0	718	0	3	0	0	10	548	15
Prairies	1207	0	0	1252	4	1201	0	4	2	0	13	1031	25
Vancouver, B.C./C.-B.	46	2	0	46	2	46	1	0	0	0	0	46	0
CANADA	2606	13	2	2766	19	2815	4	4	11	0	13	2620	49

Also available at: <http://www.hc-sc.gc.ca/pphb-dgsp/bid-bmi/dsd-dsm/rvdi-divr/>

Aussi disponible sur le site: http://www.hc-sc.gc.ca/pphb-dgsp/bid-bmi/dsd-dsm/rvdi-divr/index_f.html

Positive Influenza Tests (%) in Canada by Region by Week of Report

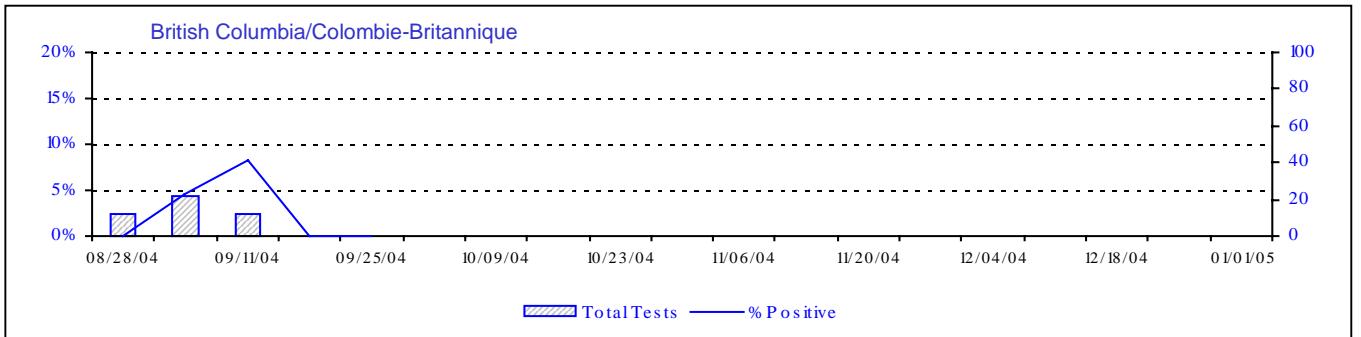
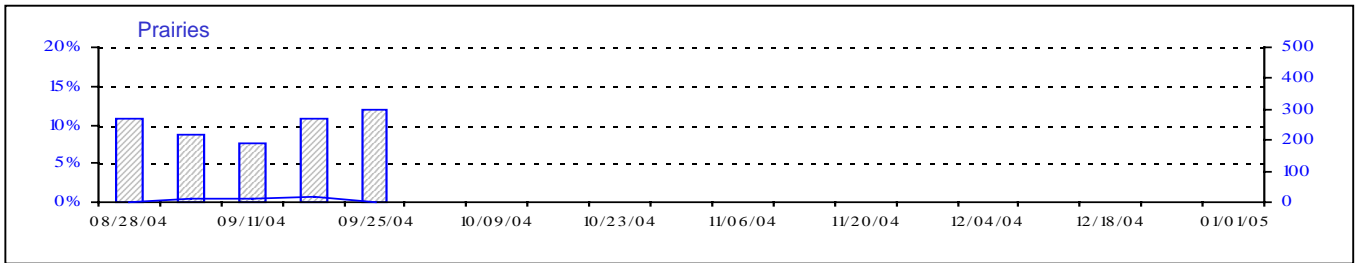
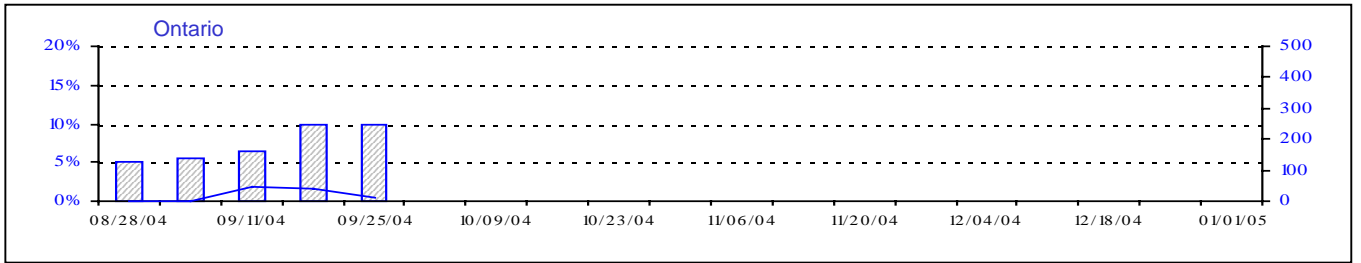
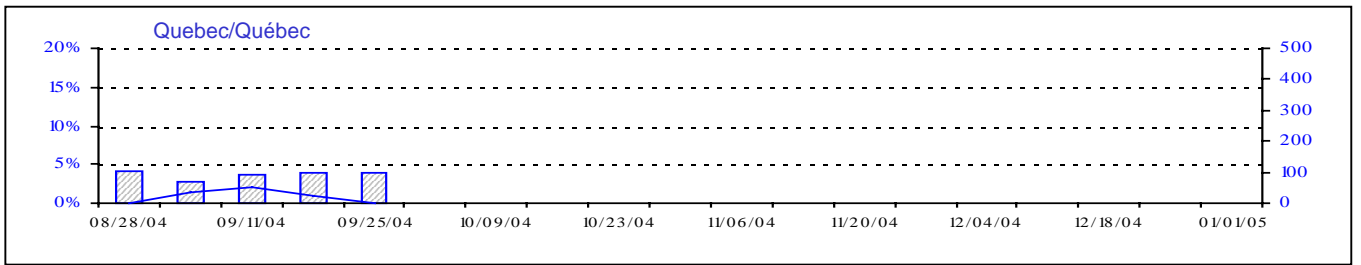
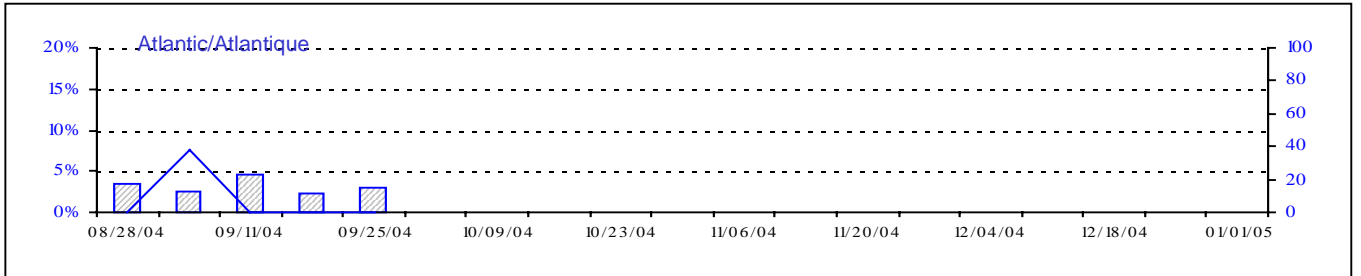
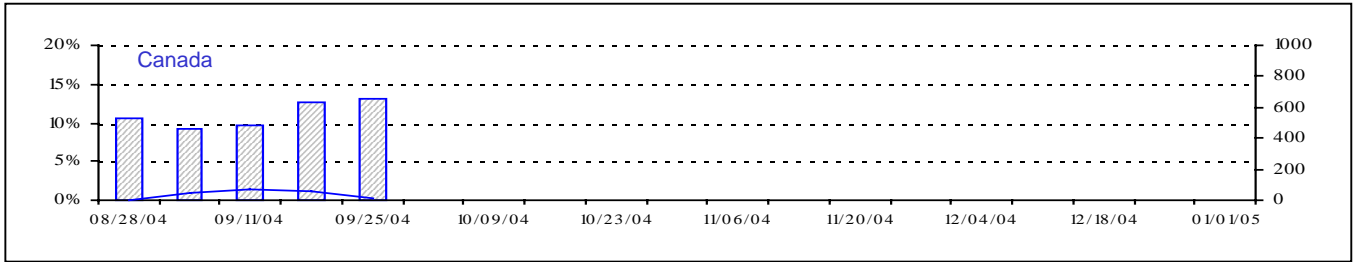
Détection du virus grippal au Canada, tests positifs (%) par région par semaine de déclaration



Total Tests
 % Tests Positive

Total Tests Total

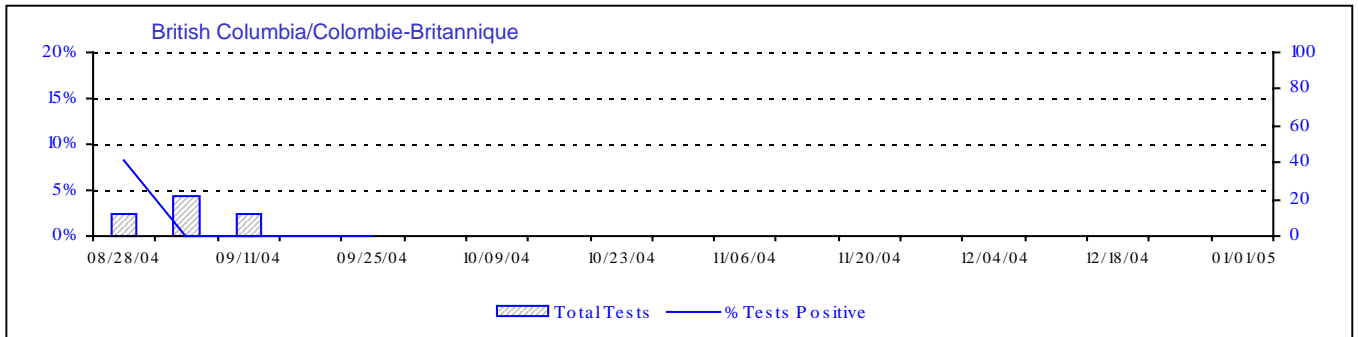
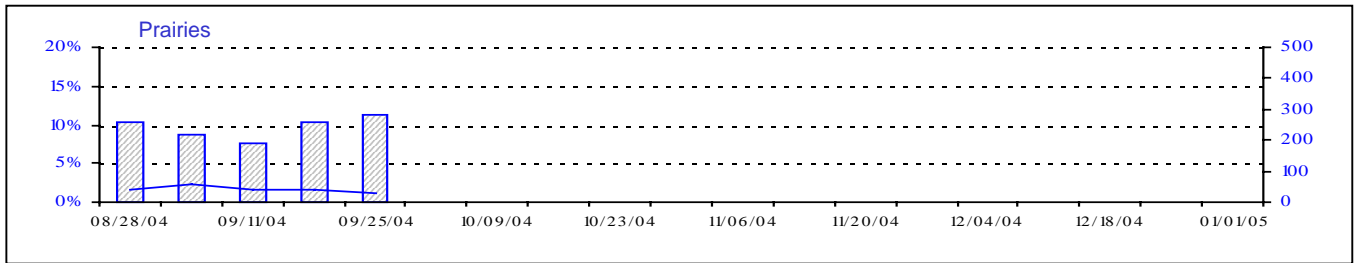
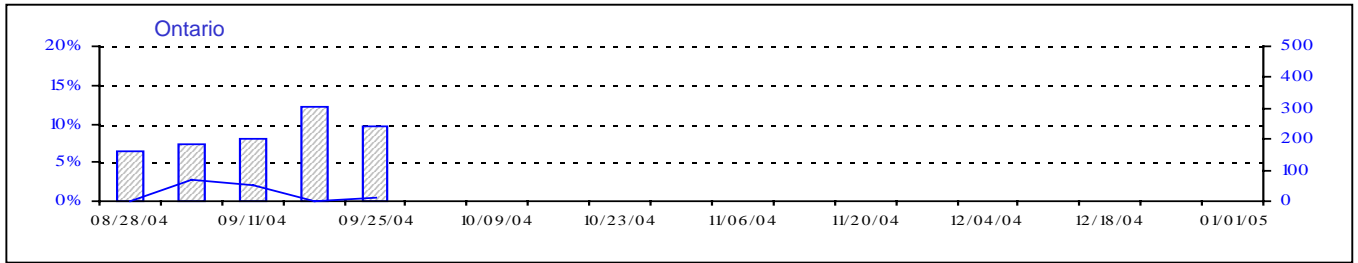
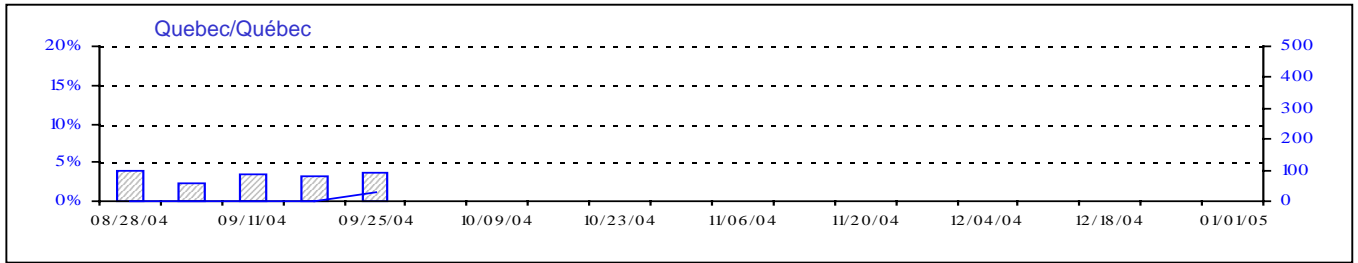
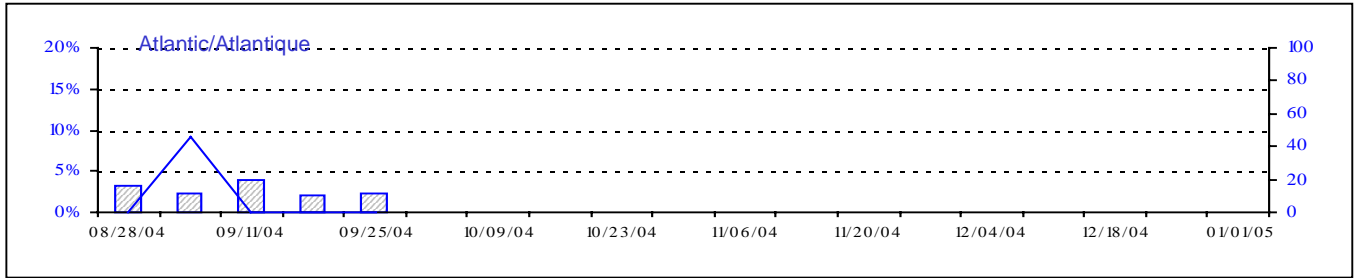
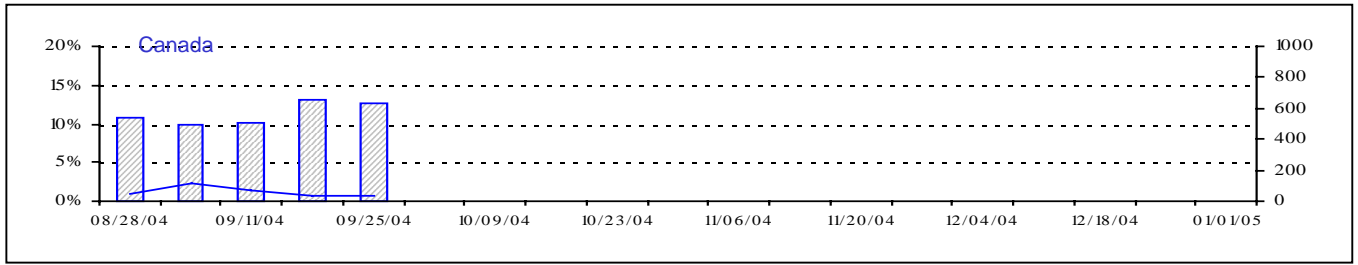
Positive RSV Tests (%) in Canada by Region by Week of Report
 Détection du virus respiratoire syncytial au Canada, tests positifs (%) par région
 par semaine de déclaration



Total Tests Total

▨ Total Tests — % Positive

Positive Parainfluenza Tests (%) in Canada by Region by Week of Report
 Détection du virus parainfluenza au Canada, tests positifs (%) par région
 par semaine de déclaration



Total Tests Total

▨ TotalTests — % Tests Positive

Positive Adenovirus Tests (%) in Canada by Region by Week of Report

Détection des adénovirus au Canada, tests positifs (%) par région par semaine de déclaration

