

Table 1/Tableau 1

Respiratory Virus Detections/Isolations for the week ending November 20, 2004 (Reporting Week 200447)
 Détection/isolement de virus des voies respiratoires pour la semaine se terminant le 20 novembre 2004(Code hebdomadaire 200447)

Reporting Laboratory Laboratoire rapporteur	Flu/Grippe Test	Flu/Grippe A Pos.	Flu/Grippe B Pos.	R.S.V. Test	R.S.V. Pos.	PIV Test	PIV 1 Pos.	PIV 2 Pos.	PIV 3 Pos.	PIV 4 Pos.	Other/Autre PIV Pos.	Adeno Test	Adeno Pos.
Nfld./T.-N.	8	0	0	9	1	1	0	0	0	0	0	1	0
P.E.I./Î.-P.-É.	-	-	-	-	-	-	-	-	-	-	-	-	-
N.S./N.-É.	32	2	0	32	0	32	0	0	0	0	0	32	2
N.B./N.-B.	33	0	0	23	0	21	0	0	0	0	0	21	4
Atlantic/Atlantique	73	2	0	64	1	54	0	0	0	0	0	54	6
Région Nord-Est	22	0	0	19	0	0	0	0	0	0	0	0	0
Québec-Chaudière-Appalaches	54	0	0	73	1	51	0	0	0	1	0	73	2
Centre-du-Québec	21	0	0	23	0	12	0	0	0	0	0	12	0
Montréal-Laval	130	0	0	195	11	158	2	0	1	1	0	157	3
Ouest du Québec	10	0	0	10	5	0	0	0	0	0	0	0	0
Montérégie	1	0	0	0	0	0	0	0	0	0	0	0	0
Province of/de Québec	238	0	0	320	17	221	2	0	1	2	0	242	5
Ottawa P.H.L.	8	3	0	1	0	0	0	0	0	0	0	0	0
CHEO/HEEO - Ottawa	39	1	0	39	1	39	0	0	0	0	0	39	0
Kingston	28	1	0	28	0	28	0	1	0	0	0	28	0
Toronto Medical Laboratory	27	0	0	27	0	27	0	0	0	0	0	27	0
C.P.H.L. - Toronto	118	3	0	137	1	116	4	1	1	1	0	116	2
Sick Kids/Hospital - Toronto	127	0	0	127	1	127	1	0	1	0	0	127	0
Sunnybrook & Women's College HSC	5	0	0	5	0	5	0	0	0	0	0	5	0
Sault Ste. Marie	5	0	0	5	0	5	0	0	0	0	0	5	0
Timmins	2	0	0	2	0	2	0	0	0	0	0	2	0
St. Joseph's - London	11	0	0	11	0	11	0	0	0	0	0	11	0
London P.H.L.	23	0	0	23	0	23	0	0	0	0	0	23	1
Orillia P.H.L.	18	0	0	18	0	18	0	0	0	0	0	18	0
Windsor	1	0	0	1	0	1	0	0	0	0	0	1	0
Thunder Bay	3	0	0	3	0	3	0	0	0	0	0	3	0
Sudbury P.H.L.	11	0	0	11	0	11	0	0	0	0	0	11	0
Hamilton P.H.L.	-	-	-	-	-	-	-	-	-	-	-	-	-
Peterborough P.H.L.	12	0	0	12	0	12	0	0	0	0	0	12	0
Province of/de l'Ontario	438	8	0	450	3	428	5	2	2	1	0	428	3
Manitoba	52	0	0	55	1	52	0	0	2	0	0	52	1
Regina	73	0	0	73	0	73	0	0	0	1	0	73	6
Saskatoon	19	0	0	15	0	19	0	0	0	0	0	19	0
Province of/de la Saskatchewan	92	0	0	88	0	92	0	0	0	1	0	92	6
Calgary	87	4	0	104	1	87	0	0	0	0	1	74	3
Edmonton	218	5	0	209	2	185	0	0	0	0	1	143	6
Province of/de l'Alberta	305	9	0	313	3	272	0	0	0	0	2	217	9
Prairies	449	9	0	456	4	416	0	0	2	1	2	361	16
Vancouver, B.C./C.-B.	77	8	0	77	0	77	0	3	0	0	0	77	1
CANADA	1275	27	0	1367	25	1196	7	5	5	4	2	1162	31

Also available at: <http://www.phac-aspc.gc.ca/bid-bmi/dsd-dsm/rvdi-divr/index-html>

Aussi disponible sur le site: http://www.phac-aspc.gc.ca/bid-bmi/dsd-dsm/rvdi-divr/index_f.html

Table 2/Tableau 2

Respiratory Virus Detections/Isolations for the period August 22, 2004 - November 20, 2004
 Détection/isolement de virus des voies respiratoires pour la période du 22 août 2004 - 20 novembre 2004
 (Reporting Weeks 200435 -200447/Code hebdomadaire 200435-200447)

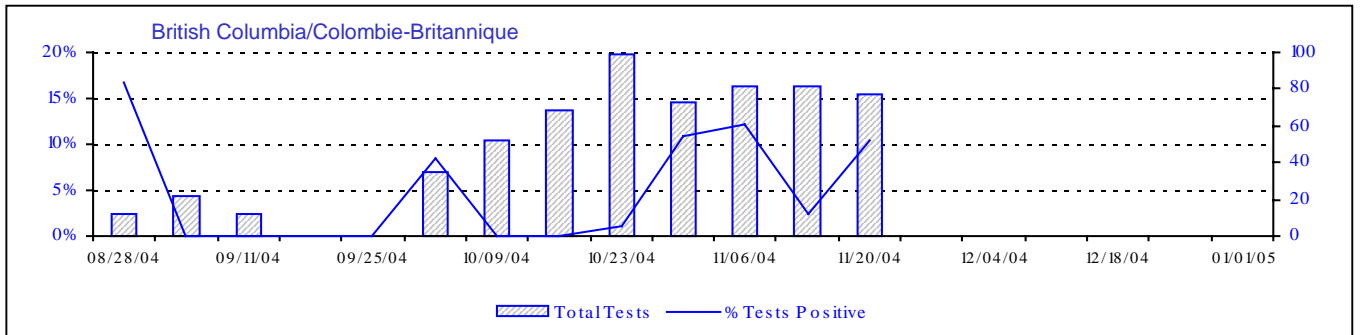
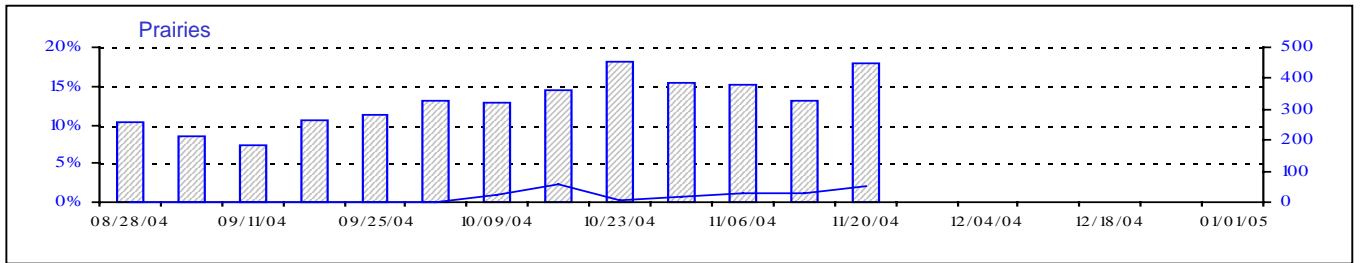
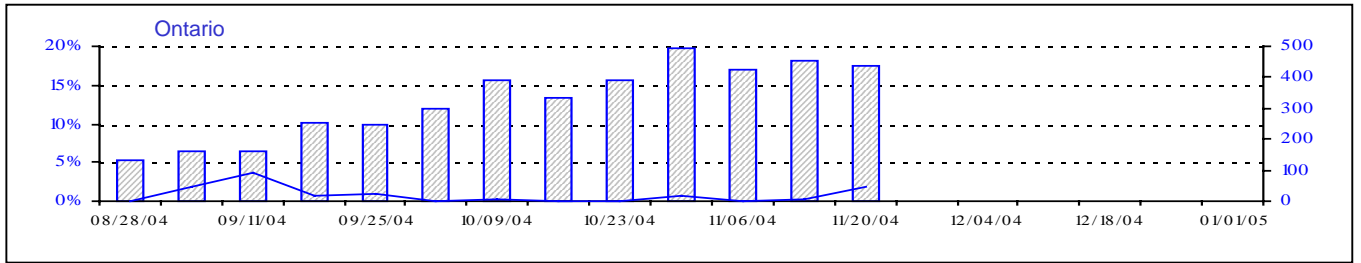
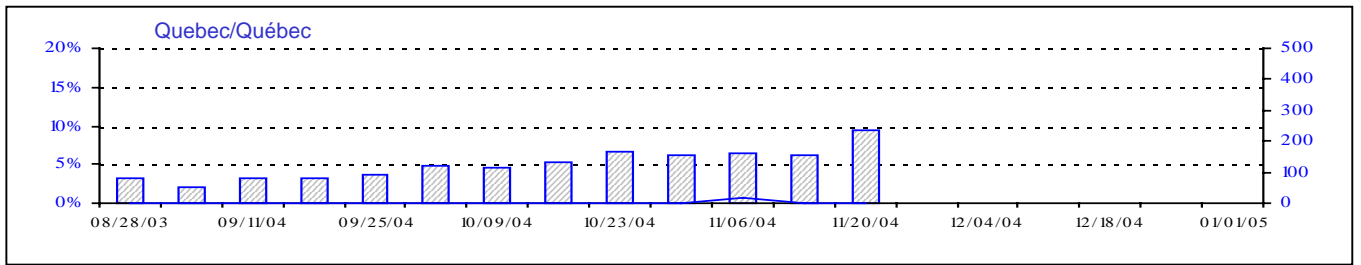
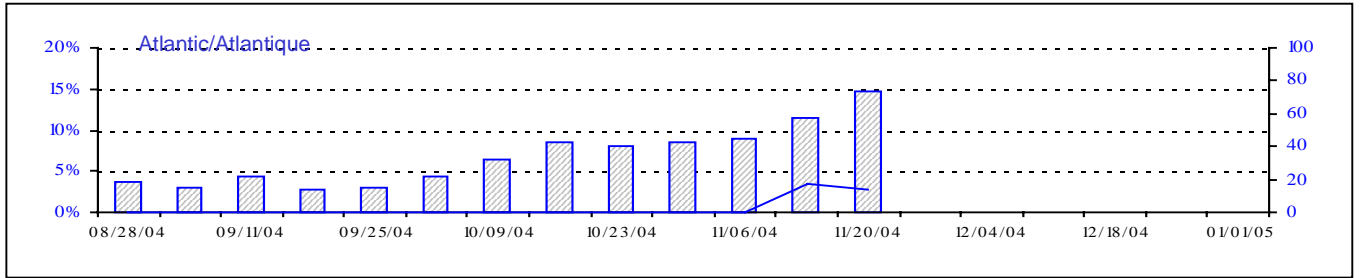
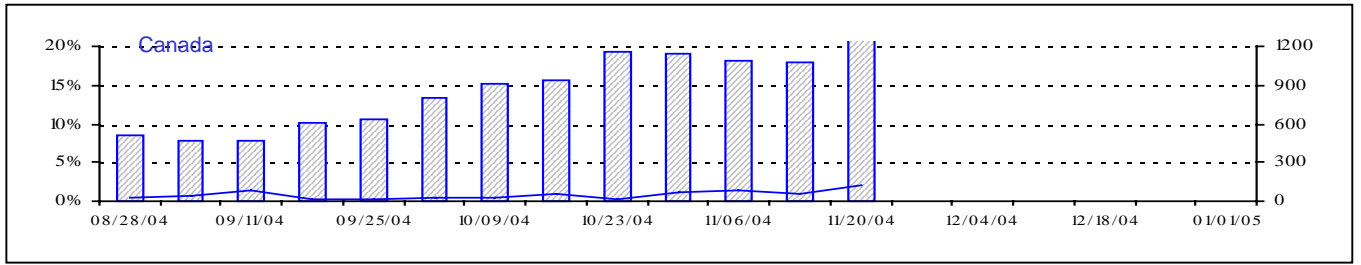
Reporting Laboratory Laboratoire rapporteur	Flu/Grippe Test	Flu/Grippe A Pos.	Flu/Grippe B Pos.	R.S.V. Test	R.S.V. Pos.	PIV Test	PIV 1 Pos.	PIV 2 Pos.	PIV 3 Pos.	PIV 4 Pos.	Other/Autre PIV Pos.	Adeno Test	Adeno Pos.
Nfld./T.-N.	81	0	0	85	4	30	0	0	0	0	0	29	0
P.E.I./Î.-P.-É.	5	0	0	6	0	5	0	0	0	0	0	5	0
N.S./N.-É.	136	3	1	136	0	136	0	0	1	0	0	136	3
N.B./N.-B.	217	0	0	152	0	141	0	0	0	0	0	141	11
Atlantic/Atlantique	439	3	1	379	4	312	0	0	1	0	0	311	14
Région Nord-Est	43	0	0	78	2	0	0	0	0	0	0	0	0
Québec-Chaudière-Appalaches	324	0	0	440	1	284	0	0	0	1	0	359	23
Centre-du-Québec	76	0	0	94	0	59	0	0	0	0	0	56	0
Montréal-Laval	1126	1	0	1496	51	1308	8	1	5	4	0	1308	66
Ouest du Québec	45	0	0	58	10	0	0	0	0	0	0	0	0
Montréal	14	0	0	22	2	0	0	0	0	0	0	0	0
Province of/de Québec	1628	1	0	2188	66	1651	8	1	5	5	0	1723	89
Ottawa P.H.L.	28	3	0	5	0	0	0	0	0	0	0	0	0
CHEO/HEEO - Ottawa	416	10	0	416	23	366	0	0	0	0	0	416	2
Kingston	189	2	1	189	0	189	0	1	1	0	0	189	1
Toronto Medical Laboratory	471	0	0	444	5	441	0	0	0	0	0	413	0
C.P.H.L. - Toronto	1279	6	1	1332	9	1155	13	2	8	3	2	1155	12
Sick Kids' Hospital - Toronto	551	2	0	776	14	979	7	1	2	0	0	979	11
Sunnybrook & Women's College HSC	72	0	0	72	0	72	0	0	0	0	0	72	0
Sault Ste. Marie	26	0	0	26	0	26	0	0	0	0	0	26	0
Timmins	81	0	0	81	0	81	0	0	0	0	0	81	2
St.Joseph's-London	71	0	0	71	0	71	0	0	0	0	0	71	1
London P.H.L.	360	0	0	360	0	360	0	1	0	0	0	360	8
Orillia P.H.L.	186	0	0	186	0	186	0	1	0	0	0	186	7
Windsor	121	0	0	126	0	112	0	0	0	0	0	112	0
Thunder Bay	57	0	0	25	0	57	0	0	1	0	0	57	0
Sudbury P.H.L.	71	0	0	71	1	71	0	0	0	0	0	71	0
Hamilton P.H.L.	83	1	0	51	0	0	0	0	0	0	0	0	0
Peterborough P.H.L.	106	0	0	106	2	106	0	1	0	0	0	106	0
Province of/de l'Ontario	4168	24	2	4337	54	4272	20	7	12	3	2	4294	44
Manitoba	515	0	0	543	3	514	1	0	14	0	0	514	19
Regina	833	8	0	833	3	833	0	12	0	1	0	833	22
Saskatoon	150	1	0	121	0	150	0	0	0	0	4	150	2
Province of/de la Saskatchewan	983	9	0	954	3	983	0	12	0	1	4	983	24
Calgary	561	11	0	578	1	580	0	0	0	0	8	516	25
Edmonton	2158	12	0	2234	4	1981	0	0	0	0	12	1451	70
Province of/de l'Alberta	2719	23	0	2812	5	2561	0	0	0	0	20	1967	95
Prairies	4217	32	0	4309	11	4058	1	12	14	1	24	3464	138
Vancouver, B.C./C.-B.	614	34	0	614	6	614	1	7	0	0	0	614	7
CANADA	11066	94	3	11827	141	10907	30	27	32	9	26	10406	292

Also available at: <http://www.phac-aspc.gc.ca/bid-bmi/dsd-dsm/rvdi-divr/index.html>

Aussi disponible sur le site: http://www.phac-aspc.gc.ca/bid-bmi/dsd-dsm/rvdi-divr/index_f.html

Positive Influenza Tests (%) in Canada by Region by Week of Report

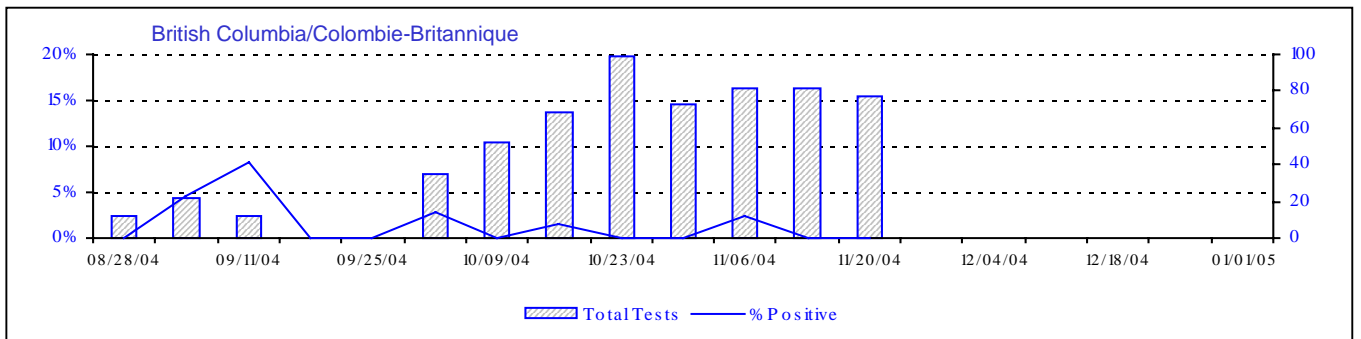
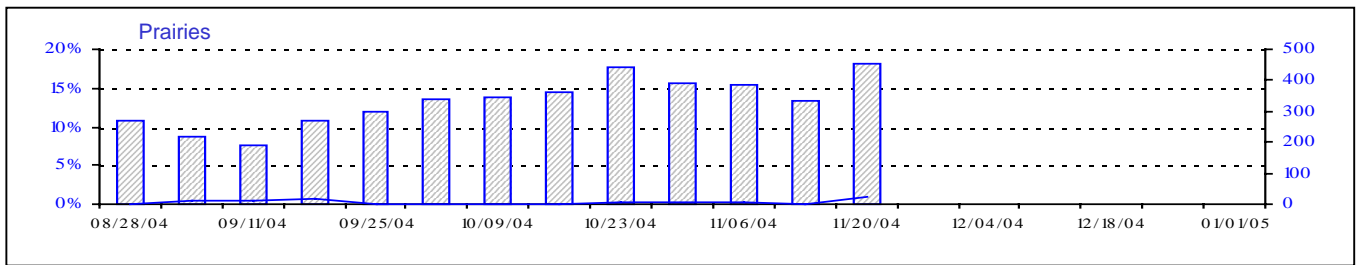
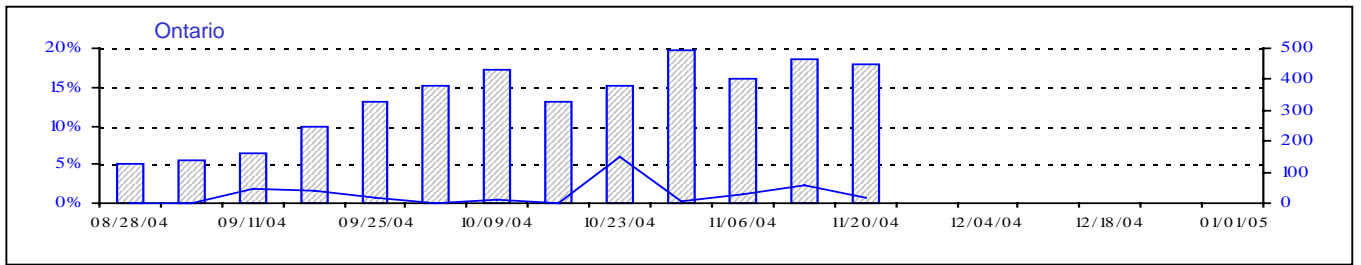
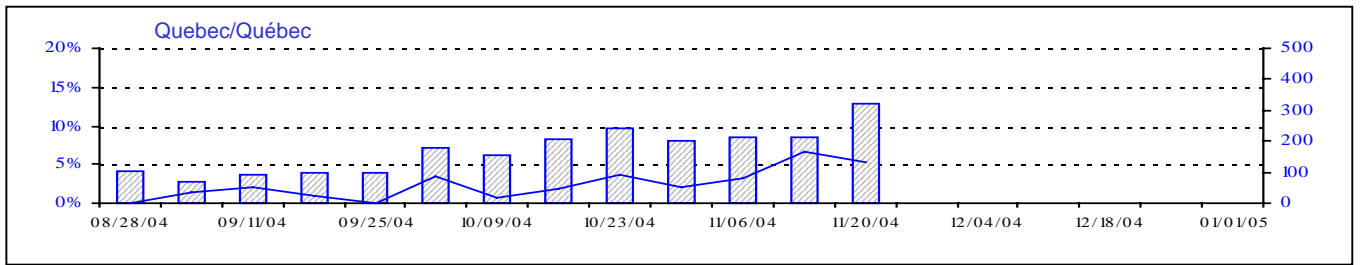
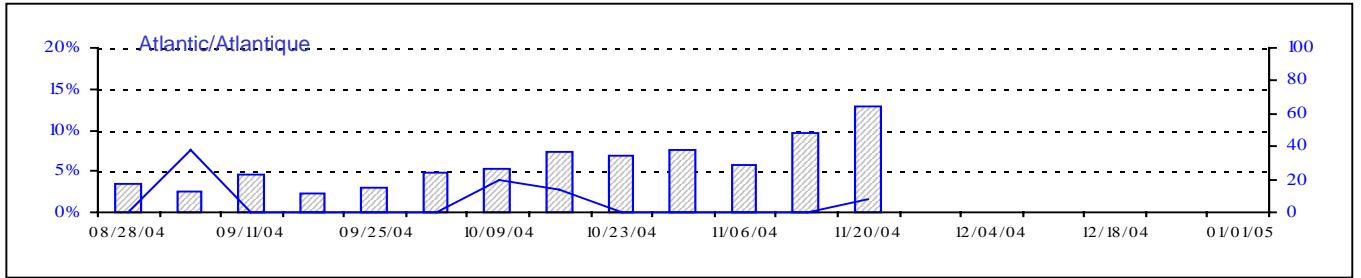
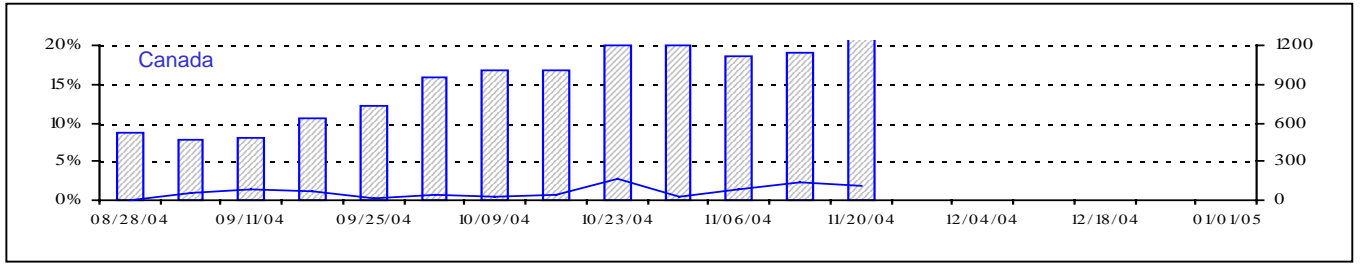
Détection du virus grippal au Canada, tests positifs (%) par région par semaine de déclaration



Total Tests Total

TotalTests
 % Tests Positive

Positive RSV Tests (%) in Canada by Region by Week of Report
 Détection du virus respiratoire syncytial au Canada, tests positifs (%) par région
 par semaine de déclaration



▨ Total Tests — % Positive

Total Tests Total

Positive Parainfluenza Tests (%) in Canada by Region by Week of Report

Détection du virus parainfluenza au Canada, tests positifs (%) par région par semaine de déclaration



Positive Adenovirus Tests (%) in Canada by Region by Week of Report
 Détection des adénovirus au Canada, tests positifs (%) par région
 par semaine de déclaration

