

Table 1/Tableau 1
 Respiratory Virus Detections/Isolations for the week ending February 10, 2007 (Reporting Week 200706)
 Détection/isolement de virus des voies respiratoires pour la semaine se terminant le 10 février 2007 (Code hebdomadaire 200706)

Reporting Laboratory Laboratoire rapporteur	Flu/Grippe Test	Flu/Grippe A Pos.	Flu/Grippe B Pos.	R.S.V. Test	R.S.V. Pos.	PIV Test	PIV 1 Pos.	PIV 2 Pos.	PIV 3 Pos.	PIV 4 Pos.	Other/Autre PIV Pos.	Adeno Test	Adeno Pos.
Newfoundland./Terre-Neuve	45	10	0	25	4	8	0	0	0	0	0	7	0
Prince Edward Island./ Île-du-Prince-Édouard	4	0	0	14	5	4	0	0	0	0	0	4	0
Nova Scotia/Nouvelle-Écosse	41	10	0	41	2	34	0	0	0	0	0	34	0
New Brunswick/Nouveau-Brunswick	62	1	0	16	0	13	0	0	0	0	0	13	0
Atlantic/Atlantique	152	21	0	96	11	59	0	0	0	0	0	58	0
Région Nord-Est	46	3	1	24	11	0	0	0	0	0	0	0	0
Québec-Chaudière-Appalaches	101	12	3	102	15	45	0	0	0	0	0	66	0
Centre-du-Québec	141	6	6	62	19	12	0	0	0	0	0	12	0
Montréal-Laval	302	19	0	253	27	195	0	0	3	0	0	203	13
Ouest du Québec	43	5	3	23	7	0	0	0	0	0	0	0	0
Montérégie	42	7	0	15	6	0	0	0	0	0	0	0	0
Province of/de Québec	675	52	13	479	85	252	0	0	3	0	0	281	13
Ottawa P.H.L.	3	1	0	1	0	0	0	0	0	0	0	0	0
CHEO/HEEO - Ottawa	89	6	0	89	27	89	0	0	2	0	0	89	1
Kingston	99	13	0	99	3	99	0	0	0	0	0	99	0
Toronto Medical Laboratory	57	0	0	57	3	57	0	0	0	0	0	57	0
C.P.H.L. - Toronto	351	67	0	361	17	322	0	0	11	0	0	322	4
Sick Kids/Hospital - Toronto	141	18	0	141	15	141	0	0	2	0	0	141	3
Sunnybrook & Women's College HSC	24	3	0	24	0	24	0	0	1	0	0	24	0
Sault Ste. Marie	13	1	0	13	2	13	0	0	0	0	0	13	0
Timmins	14	1	0	14	6	14	0	0	0	0	0	14	0
St. Joseph's - London	37	5	0	37	5	37	0	0	0	0	0	37	0
London P.H.L.	157	47	0	157	19	157	0	0	2	0	0	157	1
Orillia P.H.L.	58	7	0	58	8	58	0	0	1	0	0	58	2
Windsor	35	6	0	35	0	22	0	0	0	0	0	22	0
Thunder Bay	25	0	0	25	2	25	0	0	2	0	0	25	0
Sudbury P.H.L.	19	6	0	19	1	19	0	0	0	0	0	19	1
Hamilton P.H.L.	22	1	0	22	4	22	0	1	0	0	0	22	0
Peterborough P.H.L.	86	31	0	86	3	86	0	0	1	0	0	86	0
Province of/de l'Ontario	1230	213	0	1238	115	1185	0	1	22	0	0	1185	12
Manitoba	77	3	0	93	8	70	0	0	3	0	0	70	0
Regina	186	29	0	186	32	186	0	0	2	0	0	186	0
Saskatoon	21	2	0	18	1	21	0	0	0	0	1	21	0
Province of/de la Saskatchewan	207	31	0	204	33	207	0	0	2	0	1	207	0
Calgary	313	11	0	156	17	156	0	0	0	0	4	110	1
Edmonton	445	22	2	457	130	443	0	0	0	0	11	170	14
Province of/de l'Alberta	758	33	2	613	147	599	0	0	0	0	15	280	15
Prairies	1042	67	2	910	188	876	0	0	5	0	16	557	15
British Columbia/Colombie-Britannique	247	59	3	247	3	247	1	0	0	0	0	247	0
CANADA	3346	412	18	2970	402	2619	1	1	30	0	16	2328	40

Also available at: <http://www.phac-aspc.gc.ca/bid-bmi/dsd-dsm/rvdi-divr/index-html>

Aussi disponible sur le site: http://www.phac-aspc.gc.ca/bid-bmi/dsd-dsm/rvdi-divr/index_f.html

Table 2/Tableau 2

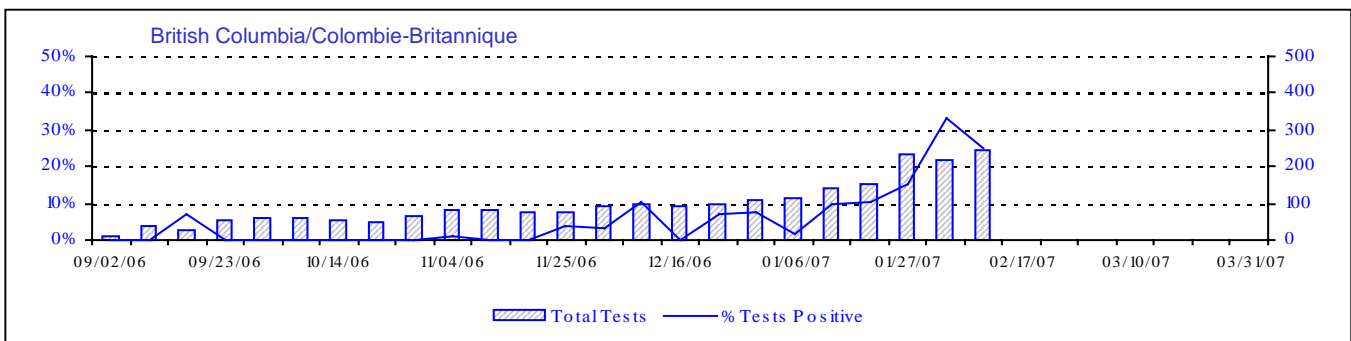
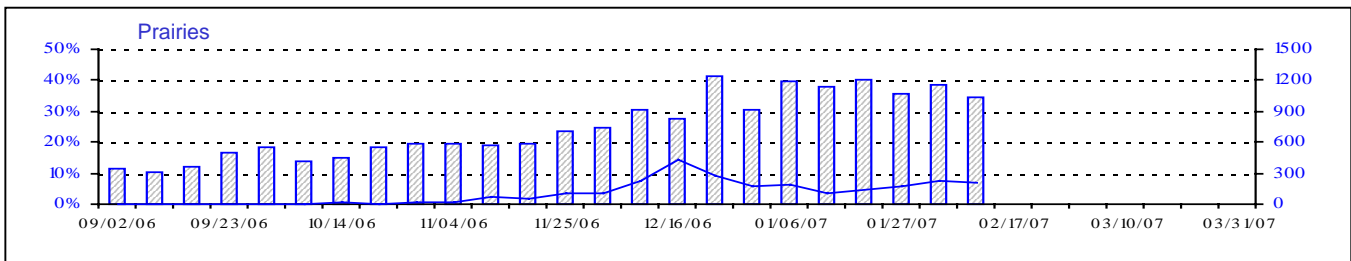
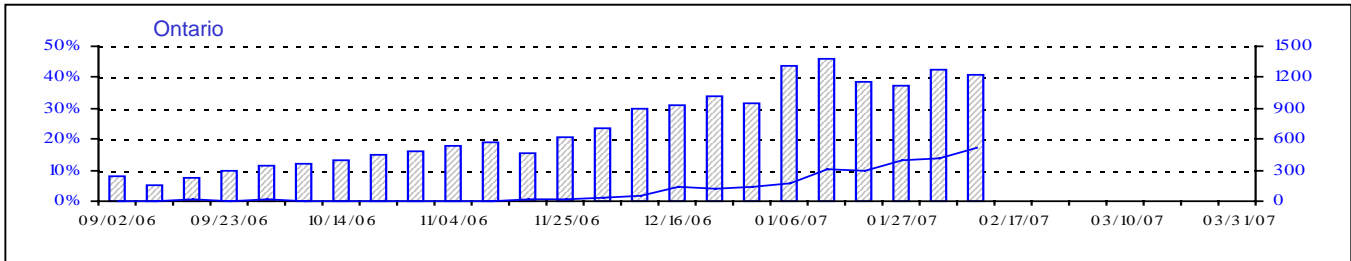
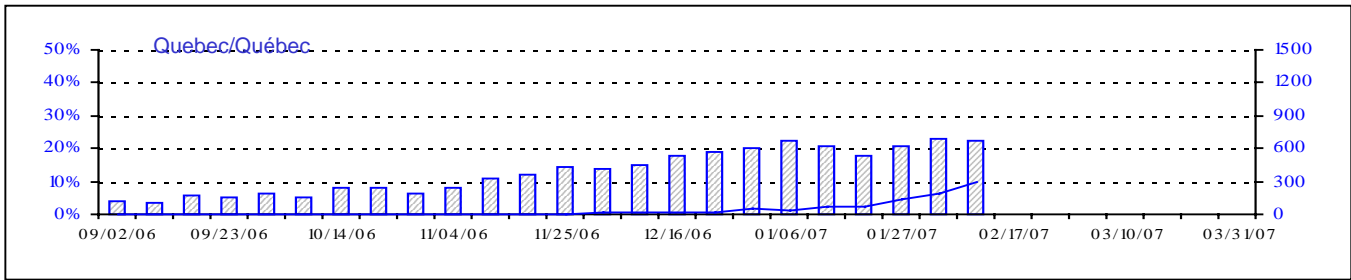
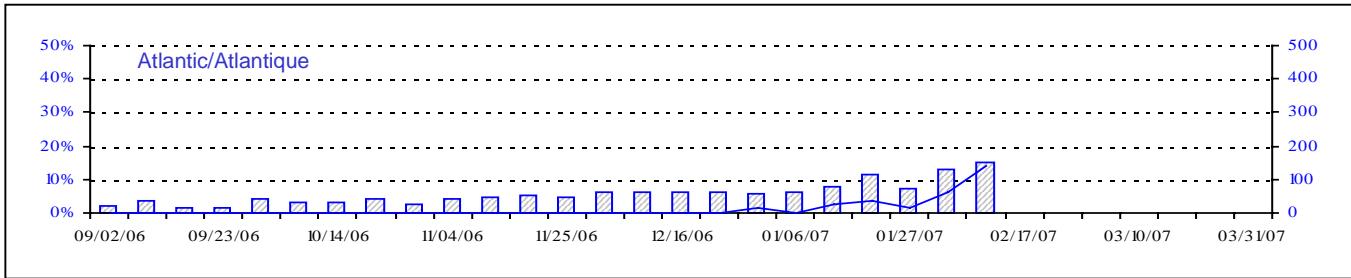
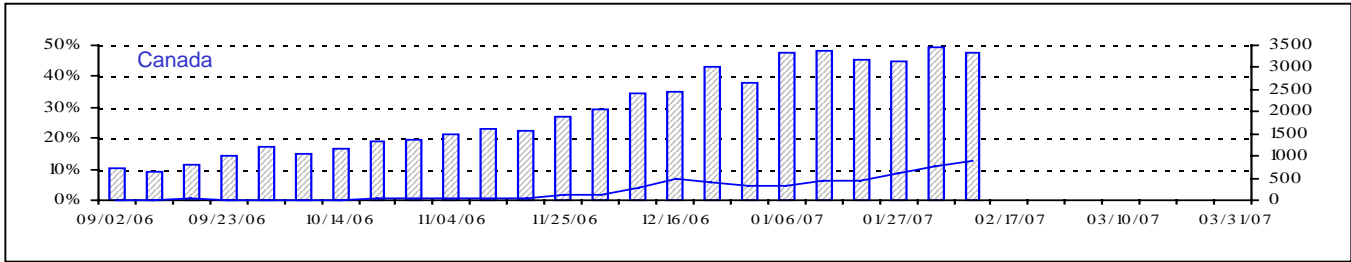
Respiratory Virus Detections/Isolations for the period August 27, 2006 - February 10, 2007
 Détection/isolement de virus des voies respiratoires pour la période du 27 août 2006 - 10 février 2007
 (Reporting Weeks 200635 -200706/Code hebdomadaire 200635-200706)

Reporting Laboratory Laboratoire rapporteur	Flu/Grippe Test	Flu/Grippe A Pos.	Flu/Grippe B Pos.	R.S.V. Test	R.S.V. Pos.	PIV Test	PIV 1 Pos.	PIV 2 Pos.	PIV 3 Pos.	PIV 4 Pos.	Other/Autre PIV Pos.	Adeno Test	Adeno Pos.
Newfoundland./Terre-Neuve	302	16	0	197	42	61	1	1	4	0	0	52	0
Prince Edward Island./ Île-du-Prince-Édouard	47	2	0	121	32	47	0	0	8	0	0	47	0
Nova Scotia/Nouvelle-Écosse	471	16	0	471	26	417	0	2	19	0	0	417	5
New Brunswick/Nouveau-Brunswick	555	3	0	294	11	258	0	0	5	0	0	261	5
Atlantic/Atlantique	1375	37	0	1083	111	783	1	3	36	0	0	777	10
Région Nord-Est	615	4	1	465	168	0	0	0	0	0	0	0	0
Québec-Chaudière-Appalaches	1496	25	6	2326	508	1139	0	1	27	8	0	1631	57
Centre-du-Québec	1209	20	7	1182	432	222	0	0	1	0	0	234	3
Montréal-Laval	4988	64	13	6900	1495	5117	9	2	51	22	0	5561	130
Ouest du Québec	453	22	4	599	282	0	0	0	0	0	0	0	0
Montérégie	578	24	0	610	284	0	0	0	0	0	0	0	0
Province of/de Québec	9339	159	31	12082	3169	6478	9	3	79	30	0	7426	190
Ottawa P.H.L.	73	3	0	23	1	0	0	0	0	0	0	0	0
CHEO/HEEO - Ottawa	1181	13	1	1181	476	1181	0	0	15	0	0	1181	19
Kingston	757	33	0	757	67	757	1	1	19	0	0	757	5
Toronto Medical Laboratory	679	9	0	679	60	679	0	0	6	0	0	679	0
C.P.H.L. - Toronto	5916	350	0	6424	625	5572	21	2	92	21	0	5572	48
Sick Kids' Hospital - Toronto	2399	87	3	2399	433	2399	7	1	43	0	0	2399	32
Sunnybrook & Women's College HSC	303	9	0	303	8	303	0	0	1	0	0	303	0
Sault Ste. Marie	134	6	0	134	33	134	0	1	7	0	0	134	1
Timmins	193	1	0	193	48	193	0	0	3	1	0	193	3
St.Joseph's-London	521	12	5	521	123	521	0	0	4	0	1	521	2
London P.H.L.	2234	278	1	2234	277	2234	1	0	56	2	0	2234	15
Orillia P.H.L.	793	54	0	793	110	793	2	1	25	0	7	793	15
Windsor	322	21	0	316	12	197	0	0	2	1	0	197	0
Thunder Bay	191	16	0	181	19	191	0	0	4	4	0	191	3
Sudbury P.H.L.	204	10	0	204	17	204	0	0	8	0	0	217	3
Hamilton P.H.L.	266	22	0	318	42	266	0	2	1	0	0	266	0
Peterborough P.H.L.	955	87	0	955	141	955	1	1	18	0	0	955	4
Province of/de l'Ontario	17121	1011	10	17615	2492	16579	33	9	304	29	8	16592	150
Manitoba	1320	18	0	1610	190	1250	0	2	53	0	0	1250	16
Regina	2864	114	0	2864	332	2864	0	18	106	0	0	2864	31
Saskatoon	718	38	1	631	201	720	0	0	0	0	41	720	9
Province of/de la Saskatchewan	3582	152	1	3495	533	3584	0	18	106	0	41	3584	40
Calgary	5720	220	2	2955	150	2955	0	0	0	0	117	2421	41
Edmonton	7340	426	7	7476	1456	6986	0	0	0	0	484	2906	187
Province of/de l'Alberta	13060	646	9	10431	1606	9941	0	0	0	0	601	5327	228
Prairies	17962	816	10	15536	2329	14775	0	20	159	0	642	10161	284
British Columbia/Colombie-Britannique	2336	217	19	2336	24	2336	2	9	14	0	0	2336	13
CANADA	48133	2240	70	48652	8125	40951	45	44	592	59	650	37292	647

Also available at: <http://www.phac-aspc.gc.ca/bid-bmi/dsd-dsm/rvdi-divr/index.html>

Aussi disponible sur le site: http://www.phac-aspc.gc.ca/bid-bmi/dsd-dsm/rvdi-divr/index_f.html

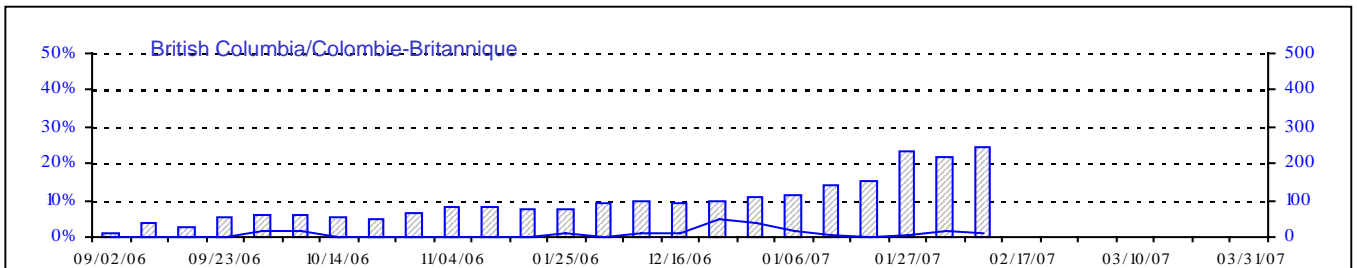
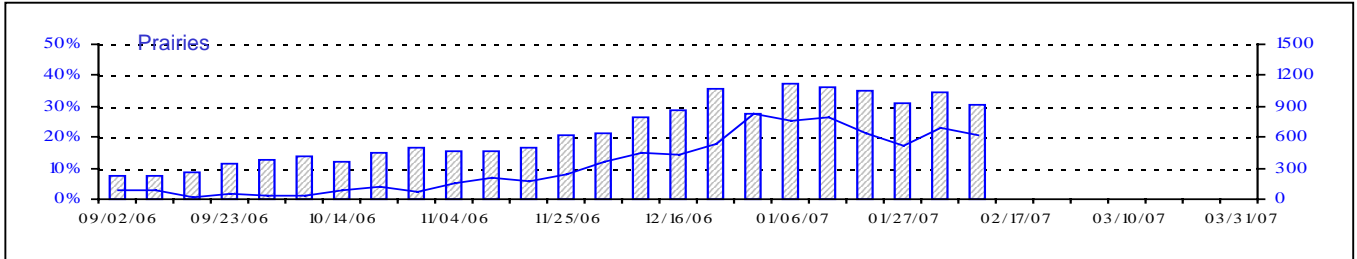
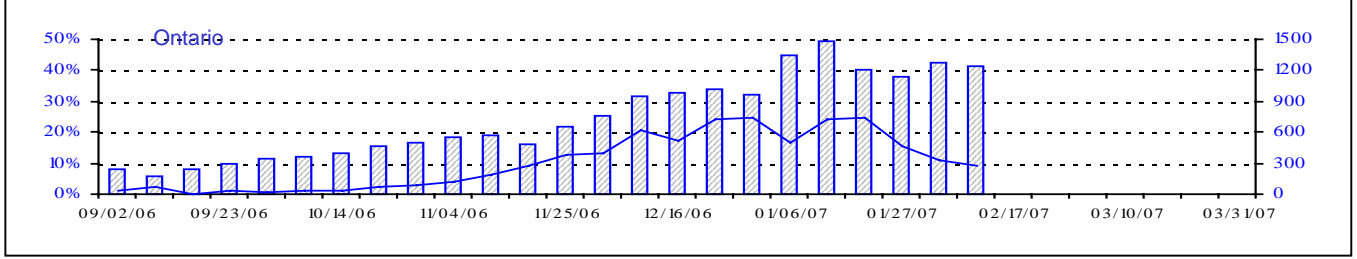
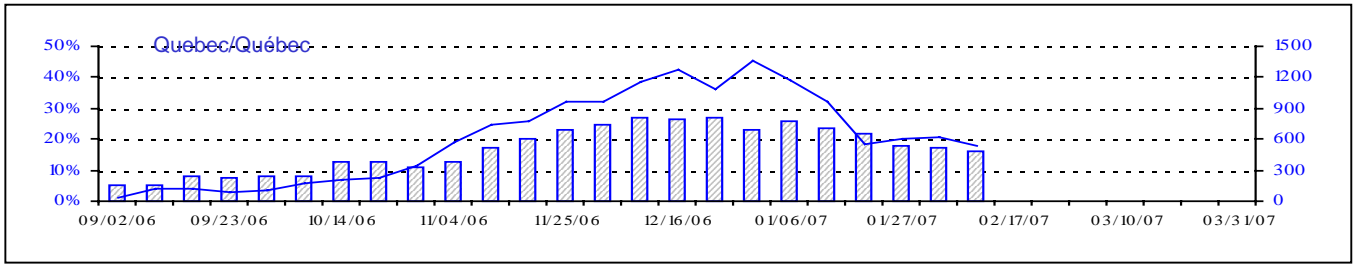
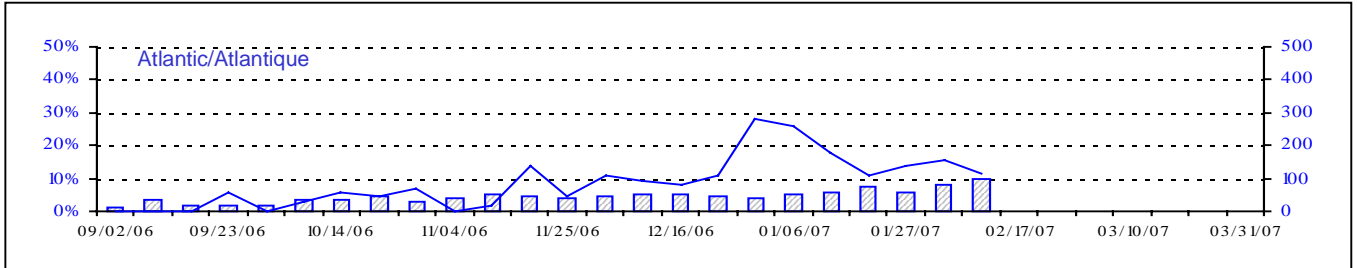
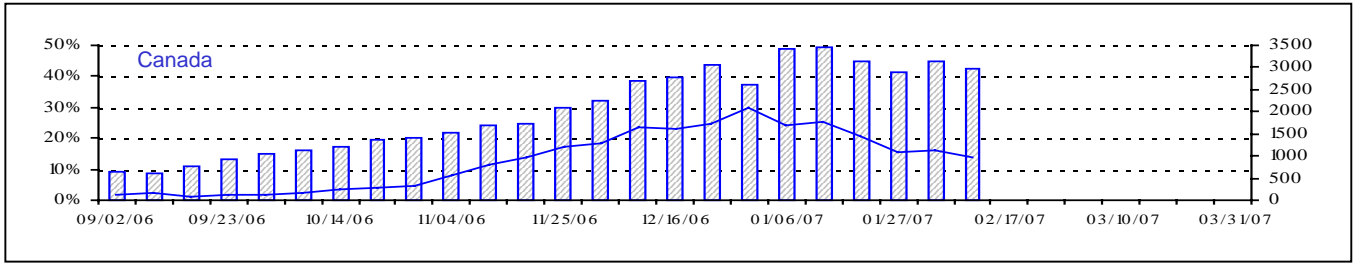
Positive Influenza Tests (%) in Canada by Region by Week of Report
 Détection du virus grippal au Canada, tests positifs (%) par région
 par semaine de déclaration



▨ Total Tests — % Tests Positive

Total Tests Total

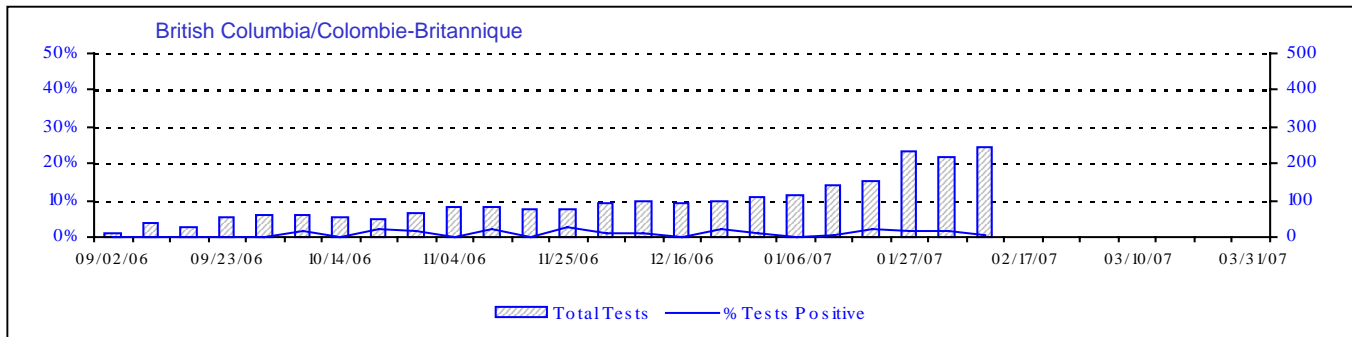
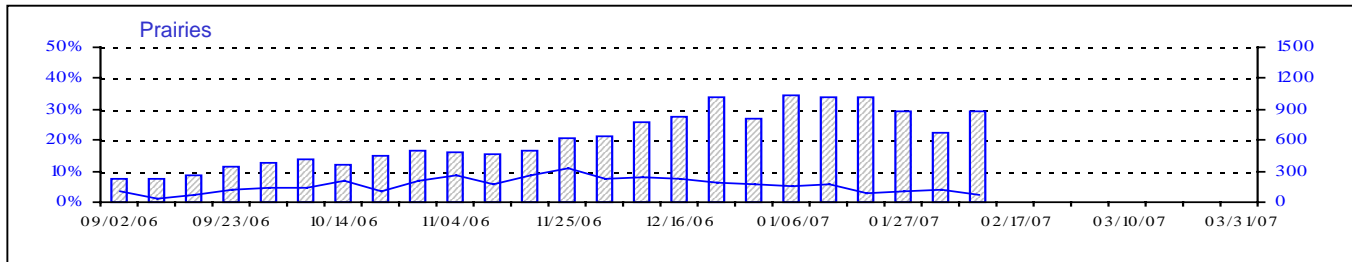
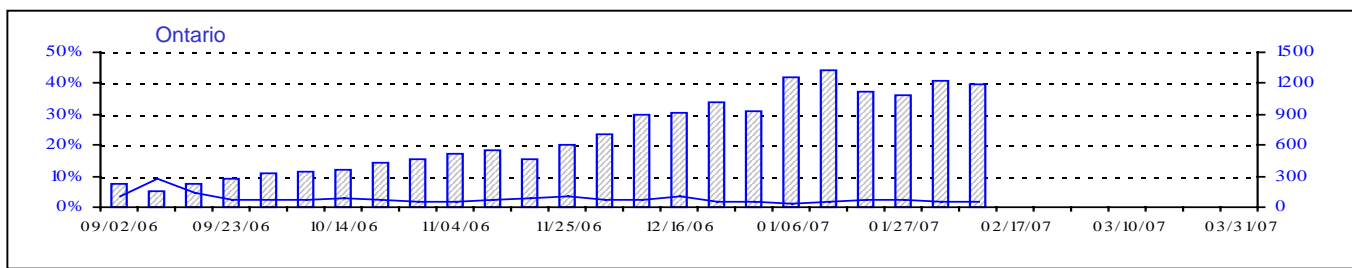
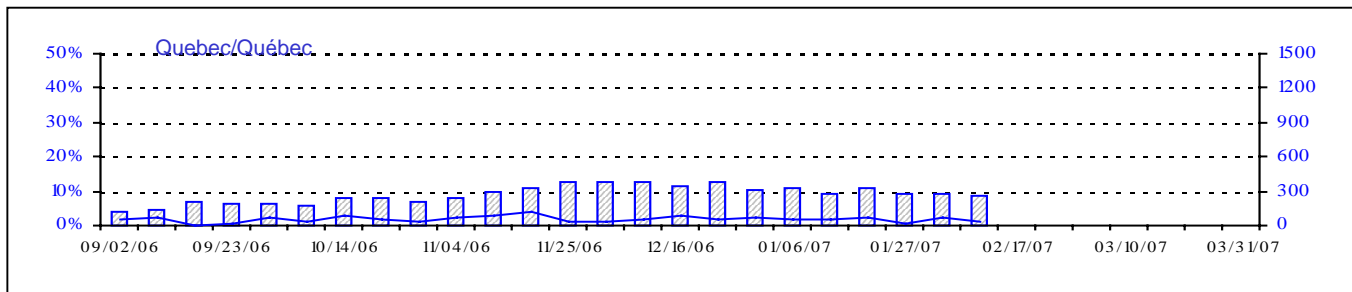
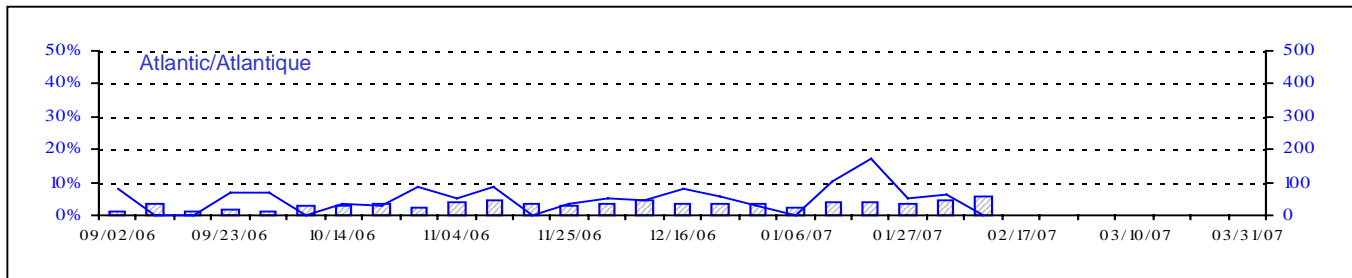
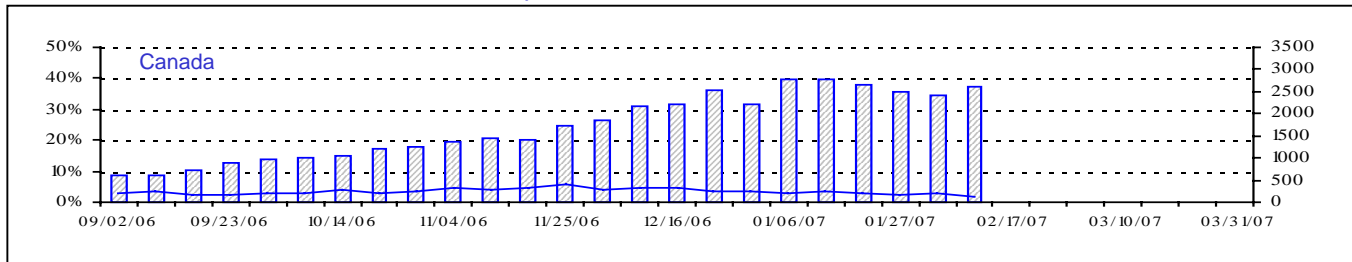
Positive RSV Tests (%) in Canada by Region by Week of Report
 Détection du virus respiratoire syncytial au Canada, tests positifs (%) par région
 par semaine de déclaration



▨ Total Tests — % Positive

Total Tests Total

Positive Parainfluenza Tests (%) in Canada by Region by Week of Report
 Détection du virus parainfluenza au Canada, tests positifs (%) par région
 par semaine de déclaration



Total Tests Total

▨ Total Tests — % Tests Positive

Positive Adenovirus Tests (%) in Canada by Region by Week of Report
 Détection des adénovirus au Canada, tests positifs (%) par région
 par semaine de déclaration

