

Table 1/Tableau 1
 Respiratory Virus Detections/Isolations for the week ending April 28, 2007 (Reporting Week 200717)
 Détection/isolement de virus des voies respiratoires pour la semaine se terminant le 28 avril 2007 (Code hebdomadaire 200717)

Reporting Laboratory Laboratoire rapporteur	Flu/Grippe Test	Flu/Grippe A Pos.	Flu/Grippe B Pos.	R.S.V. Test	R.S.V. Pos.	PIV Test	PIV 1 Pos.	PIV 2 Pos.	PIV 3 Pos.	PIV 4 Pos.	Other/Autre PIV Pos.	Adeno Test	Adeno Pos.
Newfoundland./Terre-Neuve	39	0	0	7	2	4	0	0	0	0	0	4	0
Prince Edward Island./ Île-du-Prince-Édouard	1	0	0	5	0	1	0	0	0	0	0	1	0
Nova Scotia/Nouvelle-Écosse	-	-	-	-	-	-	-	-	-	-	-	-	-
New Brunswick/Nouveau-Brunswick	32	2	5	36	1	32	0	0	0	0	0	32	1
Atlantic/Atlantique	72	2	5	48	3	37	0	0	0	0	0	37	1
Région Nord-Est	103	0	12	23	3	0	0	0	0	0	0	0	0
Québec-Chaudière-Appalaches	145	3	14	107	1	74	0	0	0	0	0	102	1
Centre-du-Québec	228	13	18	30	0	6	0	0	0	0	0	6	0
Montréal-Laval	287	1	12	236	13	187	1	0	7	0	0	220	6
Ouest du Québec	33	0	4	9	0	0	0	0	0	0	0	0	0
Montérégie	42	0	1	18	8	0	0	0	0	0	0	0	0
Province of/de Québec	838	17	61	423	25	267	1	0	7	0	0	328	7
Ottawa P.H.L.	-	-	-	-	-	-	-	-	-	-	-	-	-
CHEO/HEEO - Ottawa	-	-	-	-	-	-	-	-	-	-	-	-	-
Kingston	35	1	0	35	0	35	0	0	2	0	0	35	0
Toronto Medical Laboratory	31	1	0	31	0	31	0	0	0	0	0	31	0
C.P.H.L. - Toronto	219	3	3	236	3	204	0	0	8	0	0	204	2
Sick Kids/Hospital - Toronto	69	0	2	69	1	69	0	0	0	7	0	69	0
Sunnybrook & Women's College HSC	26	0	0	26	0	26	0	0	1	0	0	26	0
Sault Ste. Marie	2	0	0	2	0	2	0	0	0	0	0	2	0
Timmins	0	0	0	0	0	0	0	0	0	0	0	0	0
St. Joseph's - London	-	-	-	-	-	-	-	-	-	-	-	-	-
London P.H.L.	30	1	0	30	0	30	0	0	1	0	0	30	0
Orillia P.H.L.	21	0	0	21	0	21	0	0	2	0	0	21	1
Windsor	2	0	0	3	0	2	0	0	0	0	0	2	0
Thunder Bay	1	0	0	0	0	1	0	0	0	0	0	1	0
Sudbury P.H.L.	-	-	-	-	-	-	-	-	-	-	-	-	-
Hamilton P.H.L.	6	0	0	14	2	6	0	0	1	0	0	6	0
Peterborough P.H.L.	27	2	0	27	1	27	2	0	4	0	0	27	0
Province of/de l'Ontario	469	8	5	494	7	454	2	0	19	7	0	454	3
Manitoba	40	0	0	38	1	37	0	0	1	0	0	37	0
Regina	68	1	0	68	1	68	0	1	2	0	0	68	2
Saskatoon	27	0	1	23	0	27	0	0	0	0	0	27	1
Province of/de la Saskatchewan	95	1	1	91	1	95	0	1	2	0	0	95	3
Calgary	150	1	3	75	1	75	0	0	0	0	2	62	1
Edmonton	279	5	1	280	17	278	0	0	0	0	4	130	10
Province of/de l'Alberta	429	6	4	355	18	353	0	0	0	0	6	192	11
Prairies	564	7	5	484	20	485	0	1	3	0	6	324	14
British Columbia/Colombie-Britannique	102	7	2	102	1	102	0	0	1	0	0	102	0
CANADA	2045	41	78	1551	56	1345	3	1	30	7	6	1245	25

Also available at: <http://www.phac-aspc.gc.ca/bid-bmi/dsd-dsm/rvdi-divr/index-html>

Aussi disponible sur le site: http://www.phac-aspc.gc.ca/bid-bmi/dsd-dsm/rvdi-divr/index_f.html

Table 2/Tableau 2

Respiratory Virus Detections/Isolations for the period August 27, 2006 - April 28, 2007
 Détection/isolement de virus des voies respiratoires pour la période du 27 août 2006 - 28 avril 2007
 (Reporting Weeks 200635 -200717/Code hebdomadaire 200635-200717)

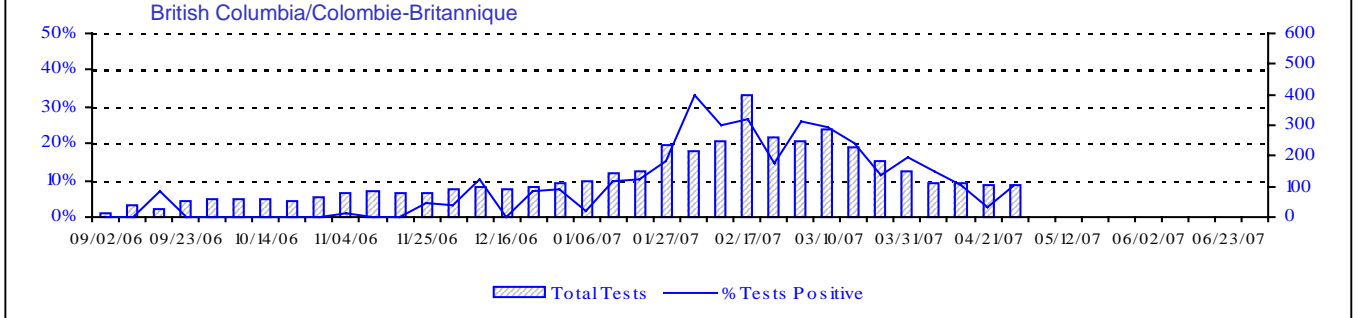
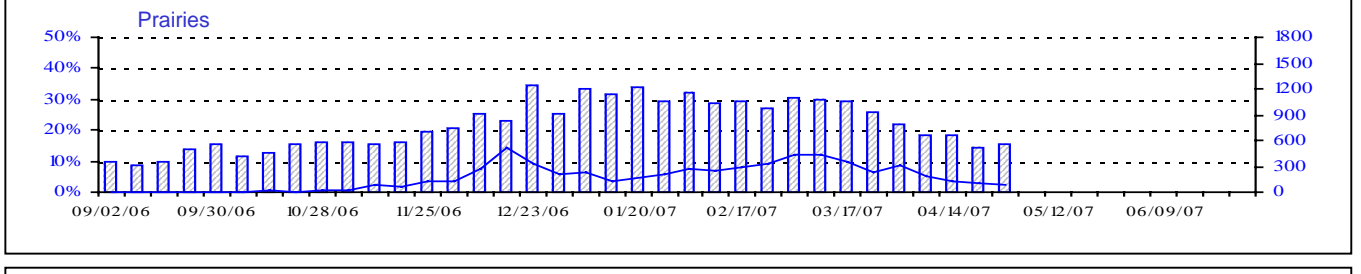
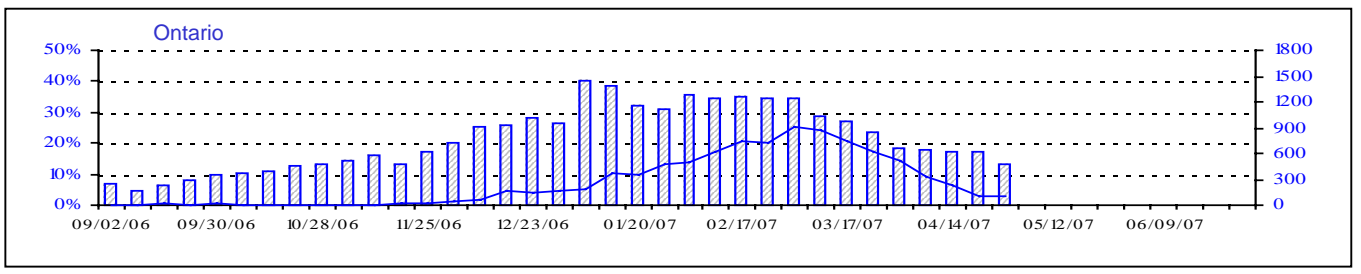
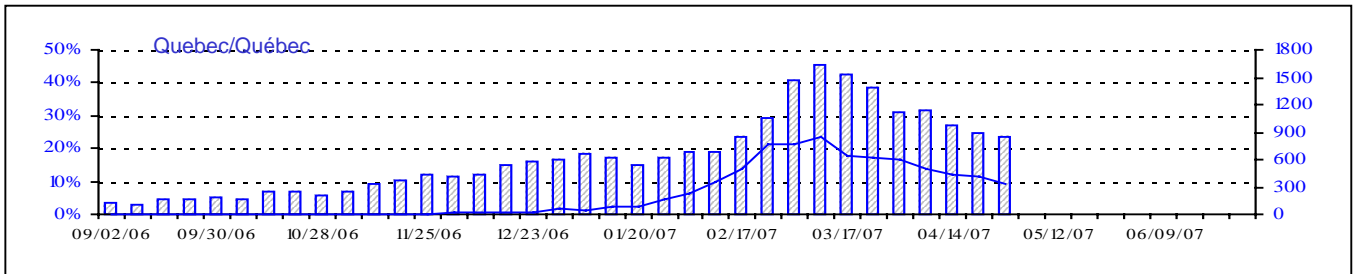
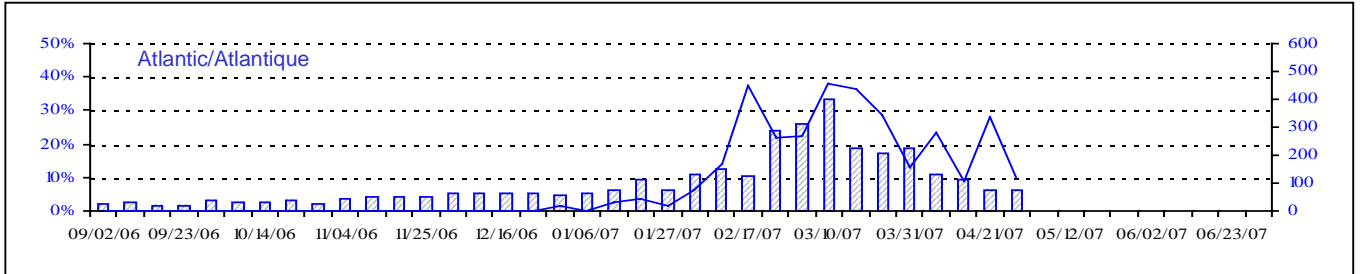
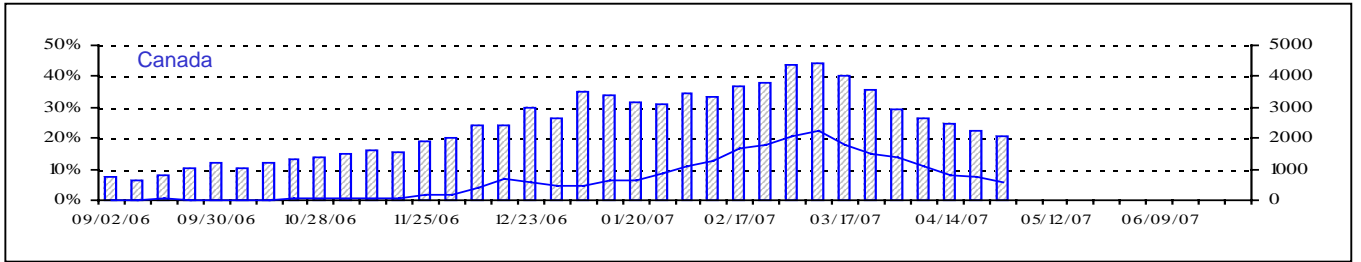
Reporting Laboratory Laboratoire rapporteur	Flu/Grippe Test	Flu/Grippe A Pos.	Flu/Grippe B Pos.	R.S.V. Test	R.S.V. Pos.	PIV Test	PIV 1 Pos.	PIV 2 Pos.	PIV 3 Pos.	PIV 4 Pos.	Other/Autre PIV Pos.	Adeno Test	Adeno Pos.
Newfoundland./Terre-Neuve	1062	164	0	304	68	96	1	1	6	0	0	77	0
Prince Edward Island./ Île-du-Prince-Édouard	112	29	0	258	61	112	0	0	9	0	0	112	1
Nova Scotia/Nouvelle-Écosse	877	119	0	877	54	597	0	3	20	0	0	597	10
New Brunswick/Nouveau-Brunswick	1501	287	11	966	18	904	0	0	6	0	0	907	10
Atlantic/Atlantique	3552	599	11	2405	201	1709	1	4	41	0	0	1693	21
Région Nord-Est	2183	243	124	700	220	0	0	0	0	0	0	0	0
Québec-Chaudière-Appalaches	3515	264	130	3717	587	2027	0	1	32	9	0	2798	89
Centre-du-Québec	3991	313	182	1642	491	330	0	0	2	0	0	342	4
Montréal-Laval	9923	524	193	10221	1672	7748	16	4	112	27	0	8503	202
Ouest du Québec	1210	152	61	776	305	0	0	0	0	0	0	0	0
Montréal	1389	165	38	809	342	0	0	0	0	0	0	0	0
Province of/de Québec	22211	1661	728	17865	3617	10105	16	5	146	36	0	11643	295
Ottawa P.H.L.	144	9	0	67	2	0	0	0	0	0	0	0	0
CHEO/HEEO - Ottawa	2432	237	5	2432	668	2432	0	0	39	0	0	2432	31
Kingston	1350	147	3	1350	92	1350	2	5	40	0	0	1350	6
Toronto Medical Laboratory	1006	22	1	1006	65	1006	0	1	11	0	0	1006	1
C.P.H.L. - Toronto	8990	785	12	9622	723	8468	26	5	196	22	0	8468	92
Sick Kids' Hospital - Toronto	3430	153	5	3430	486	3430	9	1	72	32	0	3430	60
Sunnybrook & Women's College HSC	534	23	0	534	9	534	0	0	2	0	0	534	0
Sault Ste. Marie	245	26	0	245	57	245	0	1	7	0	0	245	1
Timmins	333	54	1	333	60	333	0	0	8	1	0	333	4
St.Joseph's-London	806	42	5	806	150	806	0	0	11	0	4	806	2
London P.H.L.	2991	455	1	2991	357	2991	2	0	72	2	0	2991	16
Orillia P.H.L.	1333	210	0	1333	156	1333	2	1	39	0	7	1333	23
Windsor	462	62	1	469	21	317	0	0	5	1	0	317	3
Thunder Bay	404	58	0	393	42	404	0	0	13	4	0	402	3
Sudbury P.H.L.	339	42	0	339	20	339	0	0	15	0	0	352	6
Hamilton P.H.L.	414	36	0	510	63	414	0	2	5	0	0	414	0
Peterborough P.H.L.	1590	266	1	1590	167	1590	4	1	37	0	0	1590	6
Province of/de l'Ontario	26803	2627	35	27450	3138	25992	45	17	572	62	11	26003	254
Manitoba	1910	76	0	2217	211	1757	0	2	67	0	0	1757	17
Regina	4031	258	2	4031	407	4031	0	24	119	0	0	4031	43
Saskatoon	940	52	3	815	233	942	0	0	0	0	50	942	11
Province of/de la Saskatchewan	4971	310	5	4846	640	4973	0	24	119	0	50	4973	54
Calgary	8735	391	16	4385	252	4385	0	0	0	0	175	3500	73
Edmonton	11725	764	16	11930	2067	11363	0	0	0	0	591	4993	311
Province of/de l'Alberta	20460	1155	32	16315	2319	15748	0	0	0	0	766	8493	384
Prairies	27341	1541	37	23378	3170	22478	0	26	186	0	816	15223	455
British Columbia/Colombie-Britannique	4518	602	38	4518	103	4518	2	14	35	4	0	4518	26
CANADA	84425	7030	849	75616	10229	64802	64	66	980	102	827	59080	1051

Also available at: <http://www.phac-aspc.gc.ca/bid-bmi/dsd-dsm/rvdi-divr/index.html>

Aussi disponible sur le site: http://www.phac-aspc.gc.ca/bid-bmi/dsd-dsm/rvdi-divr/index_f.html

Positive Influenza Tests (%) in Canada by Region by Week of Report

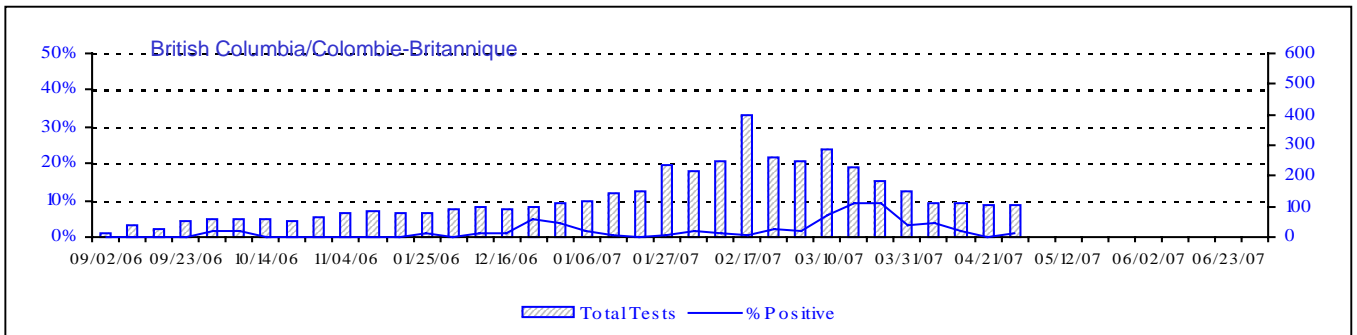
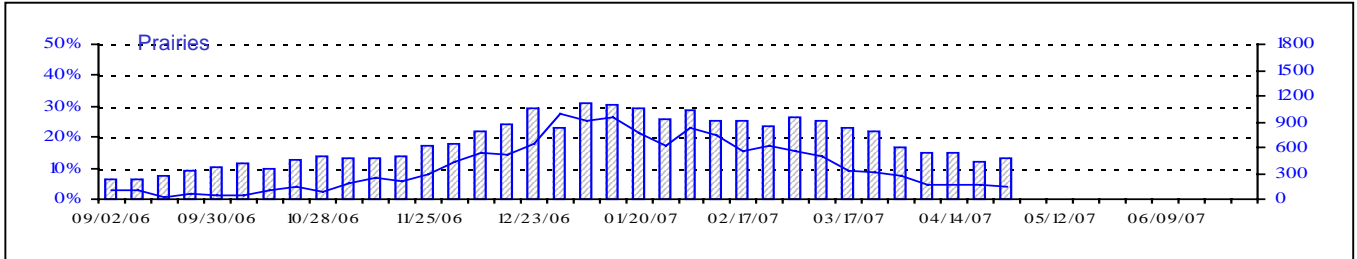
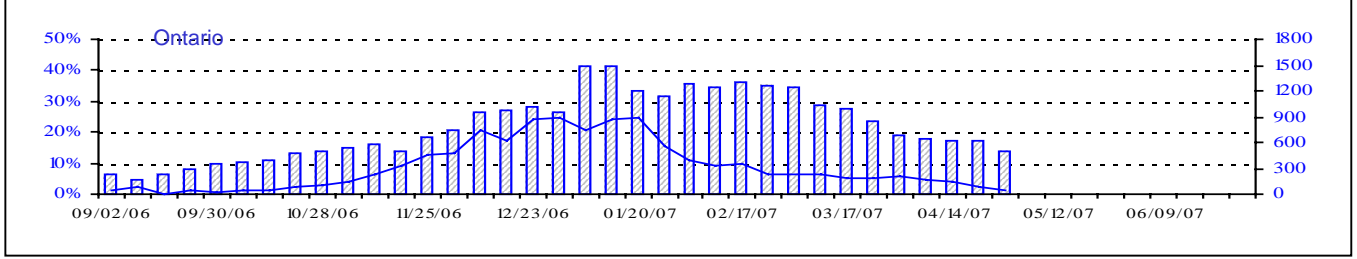
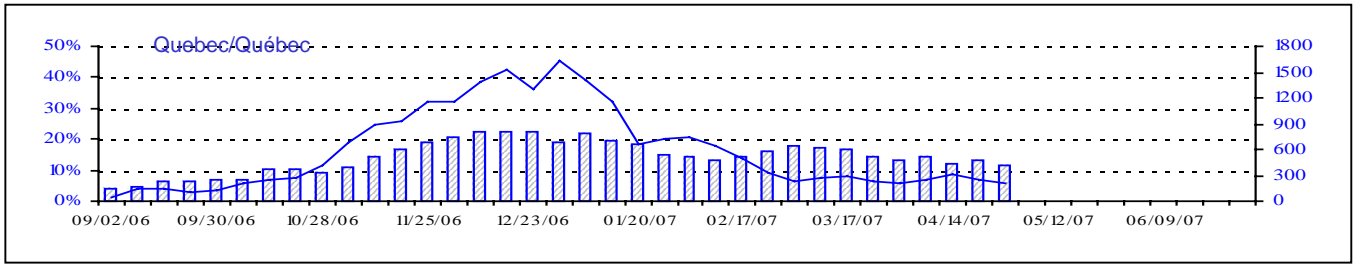
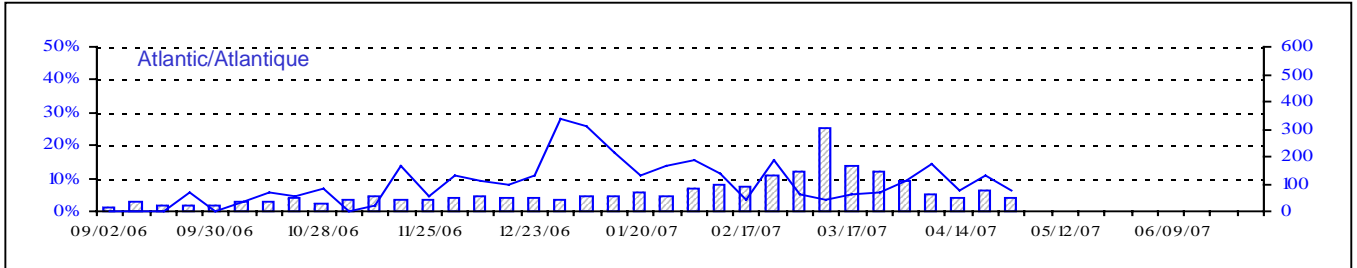
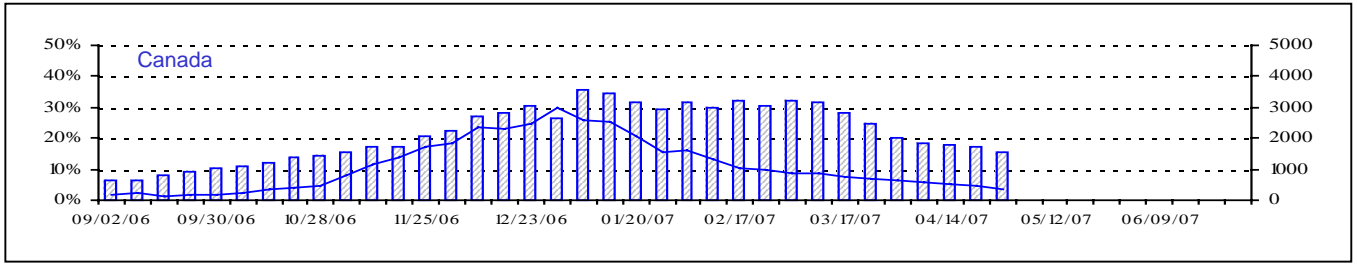
Détection du virus grippal au Canada, tests positifs (%) par région par semaine de déclaration



Total Tests Total

Total Tests
 % Tests Positive

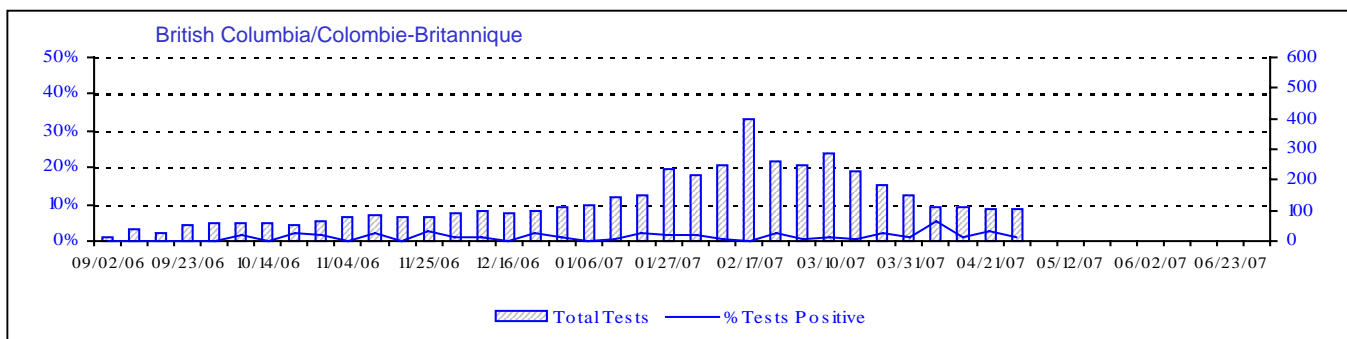
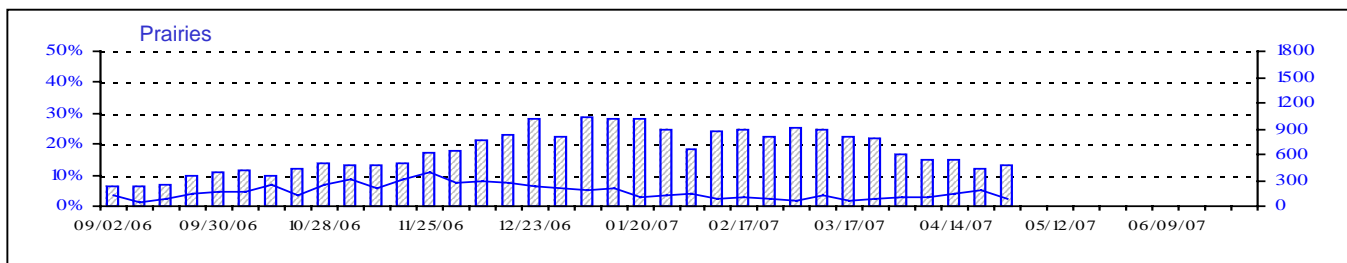
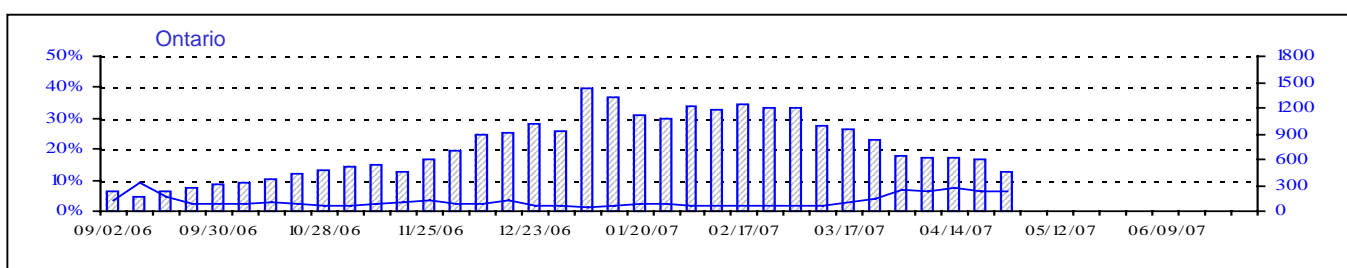
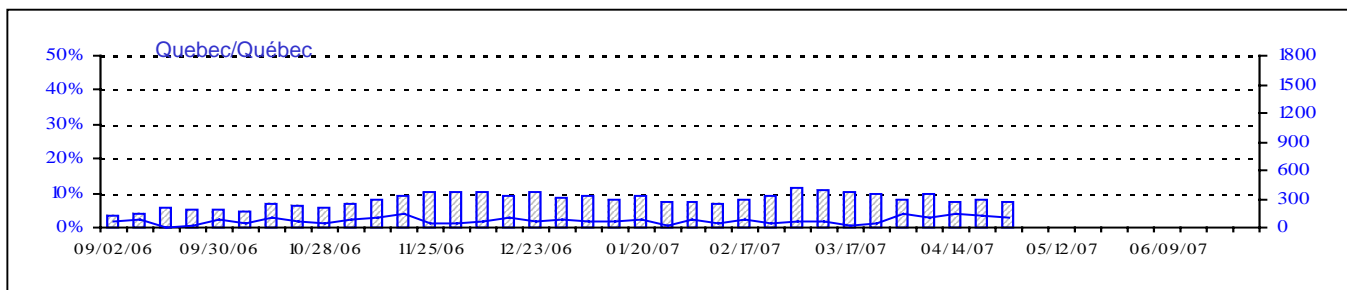
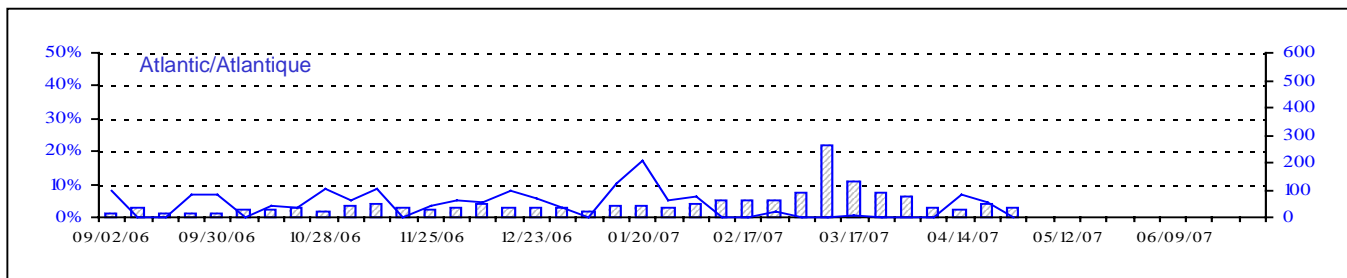
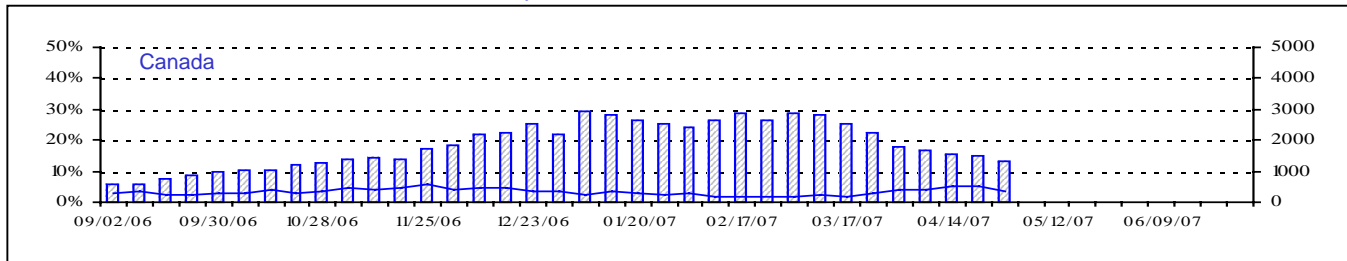
Positive RSV Tests (%) in Canada by Region by Week of Report
 Détection du virus respiratoire syncytial au Canada, tests positifs (%) par région
 par semaine de déclaration



Total Tests Total

▨ Total Tests — % Positive

Positive Parainfluenza Tests (%) in Canada by Region by Week of Report
 Détection du virus parainfluenza au Canada, tests positifs (%) par région
 par semaine de déclaration



Total Tests Total

▨ Total Tests — % Tests Positive

Positive Adenovirus Tests (%) in Canada by Region by Week of Report

Détection des adénovirus au Canada, tests positifs (%) par région par semaine de déclaration

