

Table 1/Tableau 1
 Respiratory Virus Detections/Isolations for the week ending May 26, 2007 (Reporting Week 200721)
 Détection/isolement de virus des voies respiratoires pour la semaine se terminant le 26 mai 2007 (Code hebdomadaire 200721)

Reporting Laboratory Laboratoire rapporteur	Flu/Grippe Test	Flu/Grippe A Pos.	Flu/Grippe B Pos.	R.S.V. Test	R.S.V. Pos.	PIV Test	PIV 1 Pos.	PIV 2 Pos.	PIV 3 Pos.	PIV 4 Pos.	Other/Autre PIV Pos.	Adeno Test	Adeno Pos.
Newfoundland./Terre-Neuve	19	2	1	8	0	6	0	0	0	0	0	6	0
Prince Edward Island./ Île-du-Prince-Édouard	4	0	0	4	1	4	0	0	2	0	0	4	0
Nova Scotia/Nouvelle-Écosse	7	0	0	7	1	7	0	0	2	0	0	7	2
New Brunswick/Nouveau-Brunswick	14	0	0	16	1	14	0	0	1	0	0	14	0
Atlantic/Atlantique	44	2	1	35	3	31	0	0	5	0	0	31	2
Région Nord-Est	21	0	1	6	0	0	0	0	0	0	0	0	0
Québec-Chaudière-Appalaches	65	1	1	68	0	42	0	0	2	0	0	59	1
Centre-du-Québec	54	1	3	20	0	6	0	0	0	0	0	6	0
Montréal-Laval	207	0	5	201	6	166	2	0	14	1	0	176	8
Ouest du Québec	6	0	1	5	0	0	0	0	0	0	0	0	0
Montérégie	7	1	0	4	0	0	0	0	0	0	0	0	0
Province of/de Québec	360	3	11	304	6	214	2	0	16	1	0	241	9
Ottawa P.H.L.	-	-	-	-	-	-	-	-	-	-	-	-	-
CHEO/HEEO - Ottawa	-	-	-	-	-	-	-	-	-	-	-	-	-
Kingston	-	-	-	-	-	-	-	-	-	-	-	-	-
Toronto Medical Laboratory	-	-	-	-	-	-	-	-	-	-	-	-	-
C.P.H.L. - Toronto	119	1	1	119	2	107	0	0	7	0	0	107	4
Sick Kids'Hospital - Toronto	54	0	0	54	1	54	0	0	0	3	0	54	0
Sunnybrook & Women's College HSC	7	0	0	7	0	7	0	0	0	0	0	7	0
Sault Ste. Marie	0	0	0	0	0	0	0	0	0	0	0	0	0
Timmins	4	1	0	4	0	4	0	0	3	0	0	4	0
St. Joseph's - London	14	0	0	14	0	14	0	0	0	0	0	14	0
London P.H.L.	29	0	0	29	0	29	0	0	0	0	0	29	0
Orillia P.H.L.	14	0	0	14	0	14	0	0	0	0	0	14	0
Windsor	20	0	1	20	0	20	0	0	0	0	0	20	1
Thunder Bay	0	0	0	0	0	0	0	0	0	0	0	0	0
Sudbury P.H.L.	2	0	0	2	0	2	0	0	0	0	0	2	0
Hamilton P.H.L.	0	0	0	0	0	0	0	0	0	0	0	0	0
Peterborough P.H.L.	13	0	0	13	0	13	0	0	1	0	0	13	1
Province of/de l'Ontario	276	2	2	276	3	264	0	0	11	3	0	264	6
Manitoba	21	0	0	21	0	21	0	0	2	0	0	21	0
Regina	53	0	0	53	0	53	0	0	3	0	0	53	1
Saskatoon	12	0	0	11	0	12	0	0	0	0	1	12	0
Province of/de la Saskatchewan	65	0	0	64	0	65	0	0	3	0	1	65	1
Calgary	138	0	0	69	1	69	0	0	0	0	3	53	5
Edmonton	221	0	2	221	1	221	0	0	0	0	13	111	10
Province of/de l'Alberta	359	0	2	290	2	290	0	0	0	0	16	164	15
Prairies	445	0	2	375	2	376	0	0	5	0	17	250	16
British Columbia/Colombie-Britannique	13	0	0	13	0	13	0	0	1	0	0	13	0
CANADA	1138	7	16	1003	14	898	2	0	38	4	17	799	33

Also available at: <http://www.phac-aspc.gc.ca/bid-bmi/dsd-dsm/rvdi-divr/index-html>

Aussi disponible sur le site: http://www.phac-aspc.gc.ca/bid-bmi/dsd-dsm/rvdi-divr/index_f.html

Table 2/Tableau 2

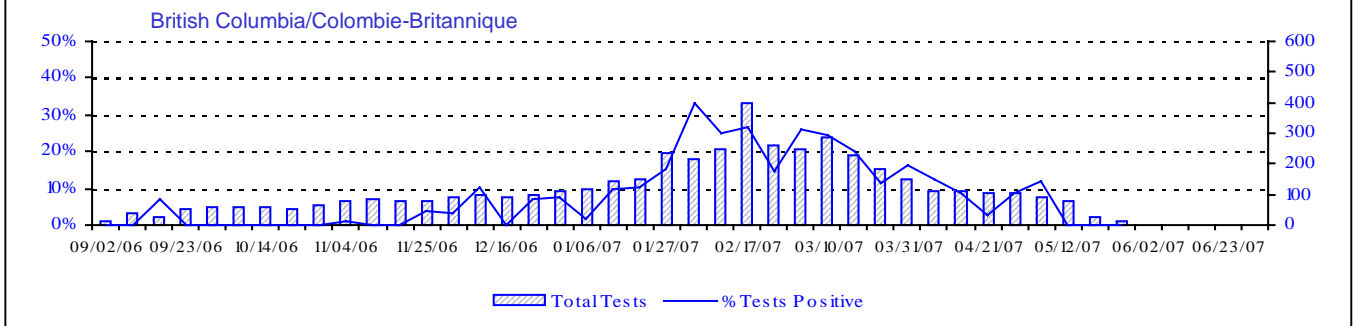
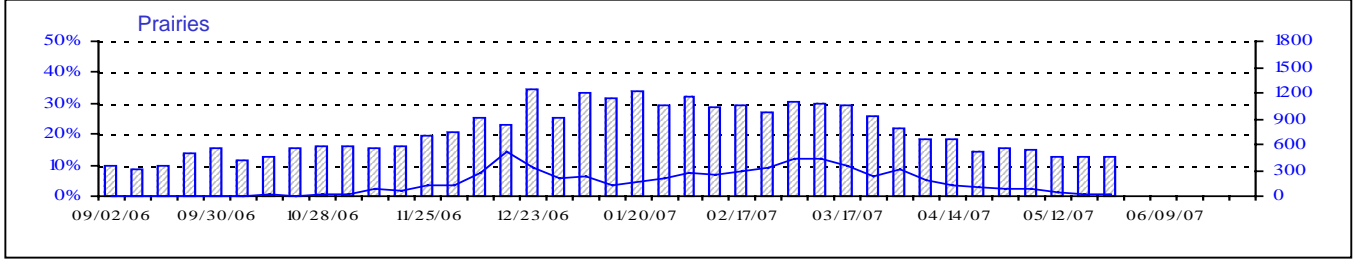
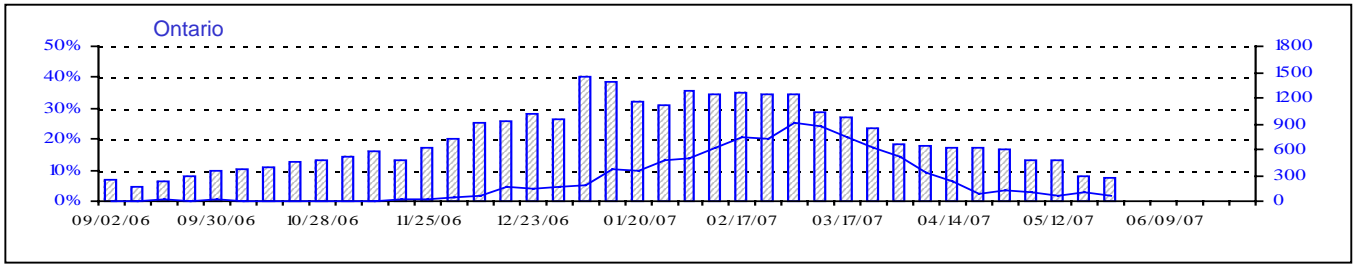
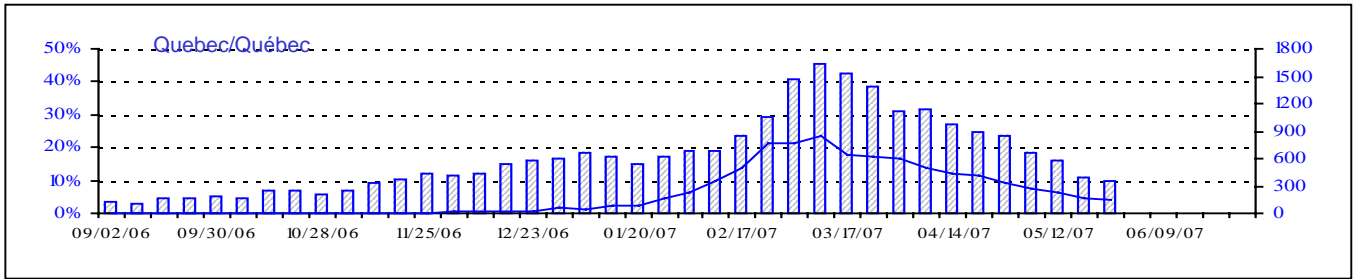
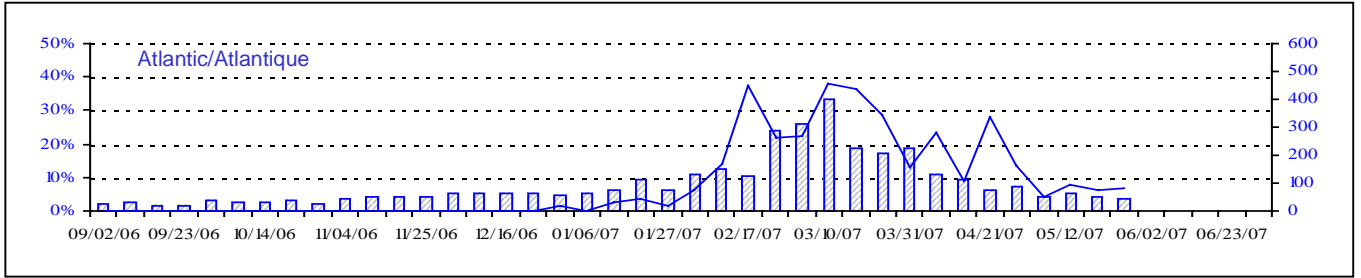
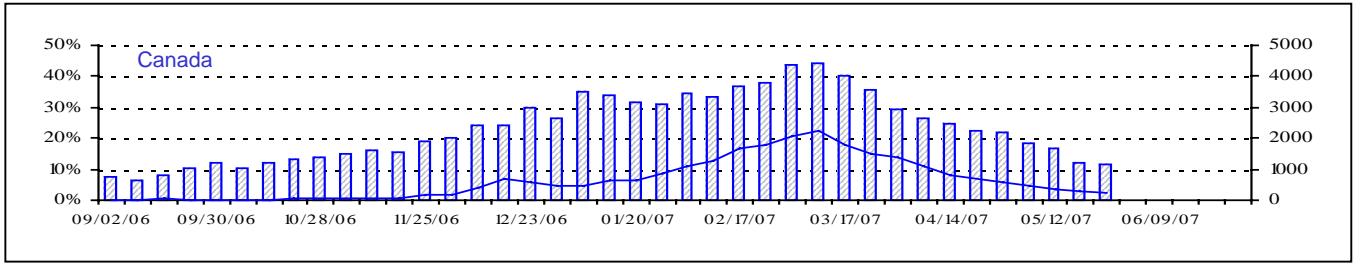
Respiratory Virus Detections/Isolations for the period August 27, 2006 - May 26, 2007
 Détection/isolement de virus des voies respiratoires pour la période du 27 août 2006 - 26 mai 2007
 (Reporting Weeks 200635 -200721/Code hebdomadaire 200635-200721)

Reporting Laboratory Laboratoire rapporteur	Flu/Grippe Test	Flu/Grippe A Pos.	Flu/Grippe B Pos.	R.S.V. Test	R.S.V. Pos.	PIV Test	PIV 1 Pos.	PIV 2 Pos.	PIV 3 Pos.	PIV 4 Pos.	Other/Autre PIV Pos.	Adeno Test	Adeno Pos.
Newfoundland./Terre-Neuve	1151	168	1	333	71	110	1	1	8	0	0	93	0
Prince Edward Island./ Île-du-Prince-Édouard	119	29	0	270	64	119	0	0	11	0	0	119	1
Nova Scotia/Nouvelle-Écosse	921	124	0	921	56	641	0	3	25	0	0	641	12
New Brunswick/Nouveau-Brunswick	1582	289	17	1055	20	974	0	0	7	0	0	977	10
Atlantic/Atlantique	3773	610	18	2579	211	1844	1	4	51	0	0	1830	23
Région Nord-Est	2348	243	136	736	227	0	0	0	0	0	0	0	0
Québec-Chaudière-Appalaches	3869	267	139	4043	589	2272	1	1	38	9	0	3099	99
Centre-du-Québec	4391	318	219	1728	491	357	0	0	3	0	0	370	4
Montréal-Laval	10883	526	232	11090	1699	8458	20	4	144	28	0	9272	222
Ouest du Québec	1268	155	64	798	306	0	0	0	0	0	0	0	0
Montréal	1450	168	39	839	351	0	0	0	0	0	0	0	0
Province of/de Québec	24209	1677	829	19234	3663	11087	21	5	185	37	0	12741	325
Ottawa P.H.L.	170	9	0	84	2	0	0	0	0	0	0	0	0
CHEO/HEEO - Ottawa	2650	239	11	2650	675	2650	0	0	49	0	0	2650	33
Kingston	1387	147	4	1387	92	1387	2	5	46	0	0	1387	6
Toronto Medical Laboratory	1079	22	1	1079	66	1079	0	1	12	0	0	1079	1
C.P.H.L. - Toronto	9535	793	18	10193	731	8977	26	5	244	22	0	8977	102
Sick Kids' Hospital - Toronto	3800	157	7	3800	490	3800	9	1	89	50	0	3800	68
Sunnybrook & Women's College HSC	593	23	0	593	9	593	0	0	10	0	0	593	0
Sault Ste. Marie	251	27	0	251	57	251	0	1	7	0	0	251	1
Timmins	352	56	1	352	60	352	0	0	11	1	0	352	4
St.Joseph's-London	860	42	5	860	150	860	0	1	16	0	5	860	2
London P.H.L.	3116	457	1	3116	359	3116	3	0	78	2	0	3116	16
Orillia P.H.L.	1414	211	0	1414	156	1414	2	1	45	0	7	1414	26
Windsor	503	67	2	510	21	358	0	0	6	1	0	358	4
Thunder Bay	416	58	0	403	42	416	0	0	13	4	0	414	3
Sudbury P.H.L.	356	42	0	356	20	356	0	0	15	0	0	369	6
Hamilton P.H.L.	420	36	0	521	63	420	0	2	6	0	0	420	0
Peterborough P.H.L.	1659	267	2	1659	168	1659	5	1	45	0	0	1659	8
Province of/de l'Ontario	28561	2653	52	29228	3161	27688	47	18	692	80	12	27699	280
Manitoba	2011	76	0	2318	211	1857	0	2	72	0	0	1857	22
Regina	4289	259	3	4289	411	4289	0	24	134	0	0	4289	46
Saskatoon	1005	52	4	868	238	1007	0	0	0	0	51	1007	13
Province of/de la Saskatchewan	5294	311	7	5157	649	5296	0	24	134	0	51	5296	59
Calgary	9263	393	21	4725	256	4725	0	0	0	0	190	3795	79
Edmonton	12668	766	26	12875	2090	12306	0	0	0	0	628	5465	360
Province of/de l'Alberta	21931	1159	47	17600	2346	17031	0	0	0	0	818	9260	439
Prairies	29236	1546	54	25075	3206	24184	0	26	206	0	869	16413	520
British Columbia/Colombie-Britannique	4731	611	40	4731	104	4731	2	14	39	4	0	4731	27
CANADA	90510	7097	993	80847	10345	69534	71	67	1173	121	881	63414	1175

Also available at: <http://www.phac-aspc.gc.ca/bid-bmi/dsd-dsm/rvdi-divr/index.html>

Aussi disponible sur le site: http://www.phac-aspc.gc.ca/bid-bmi/dsd-dsm/rvdi-divr/index_f.html

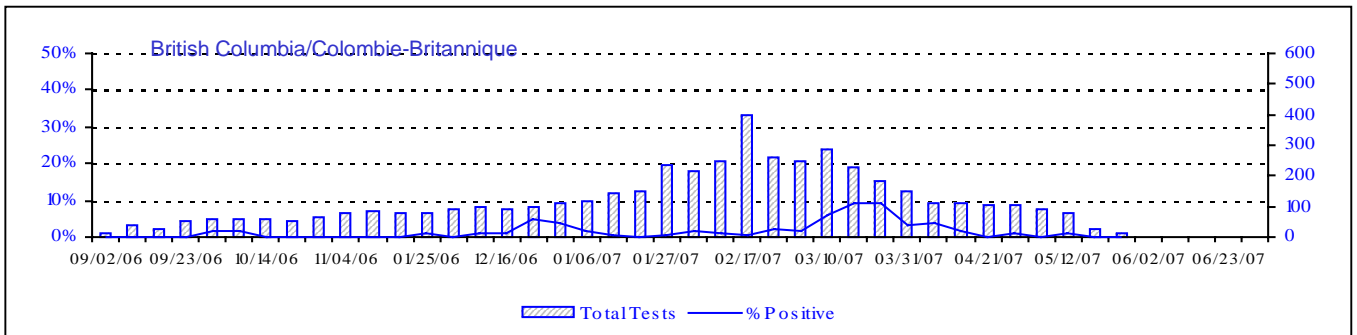
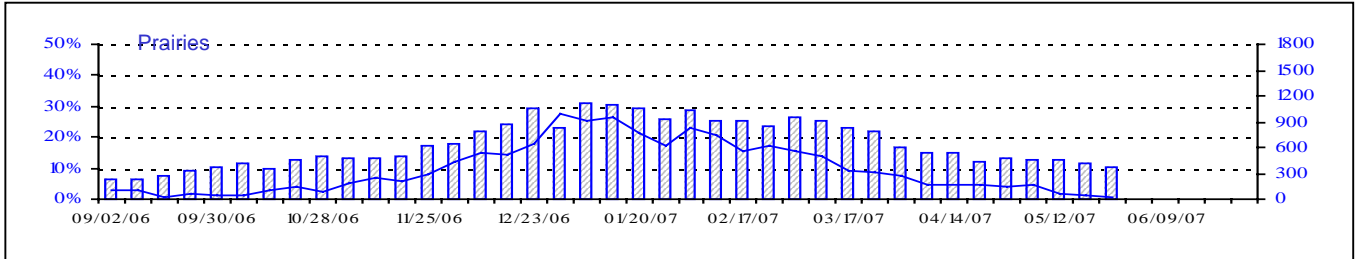
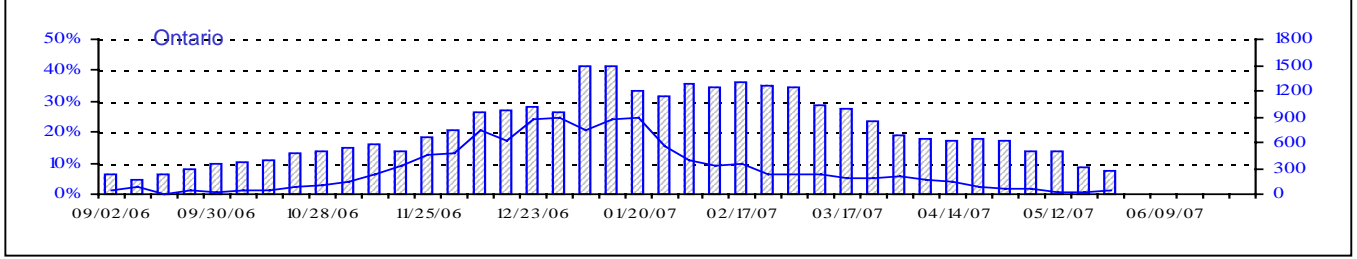
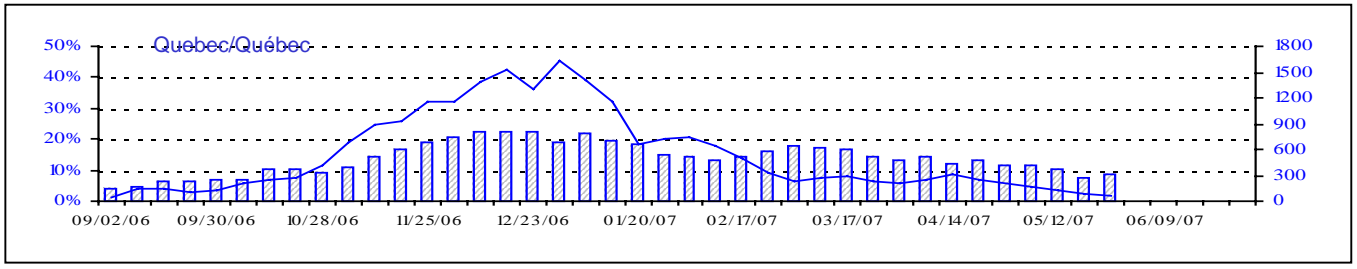
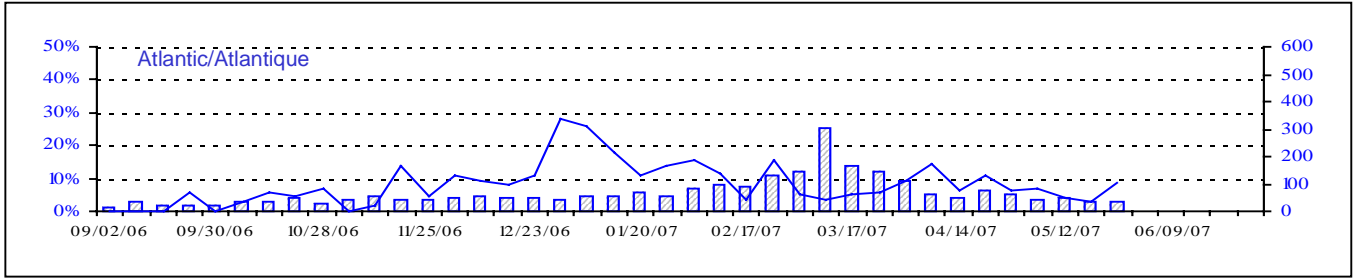
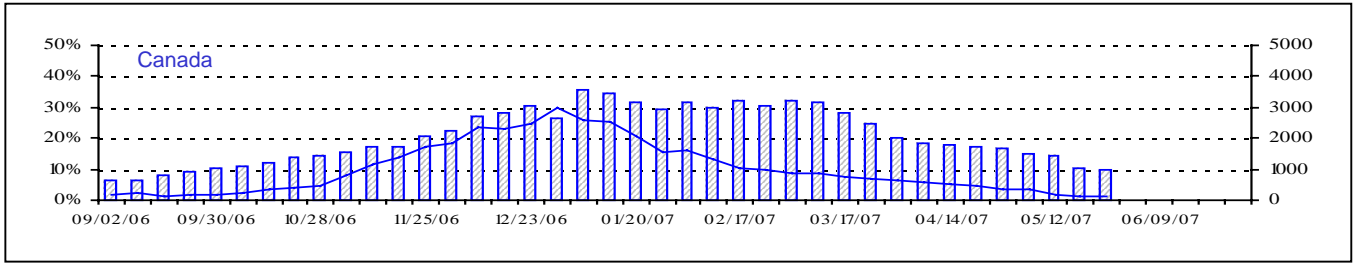
Positive Influenza Tests (%) in Canada by Region by Week of Report
 Détection du virus grippal au Canada, tests positifs (%) par région
 par semaine de déclaration



▨ Total Tests — % Tests Positive

Total Tests Total

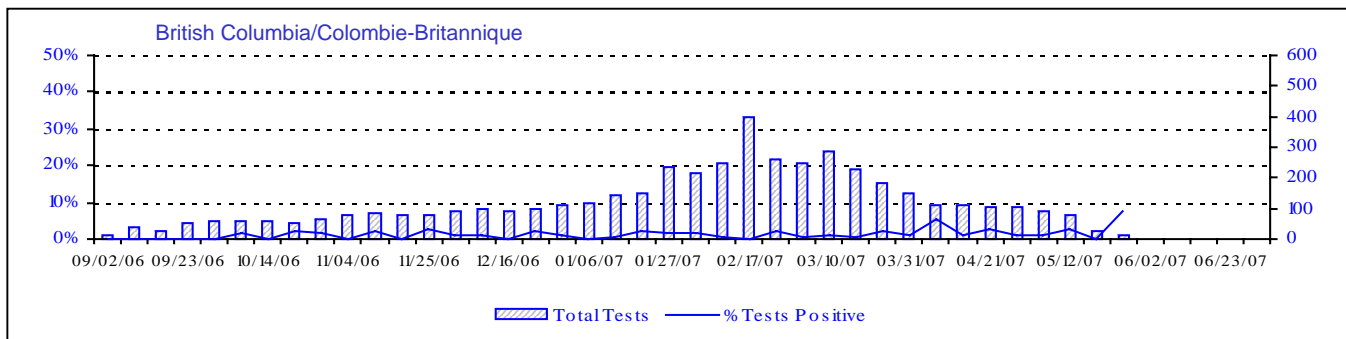
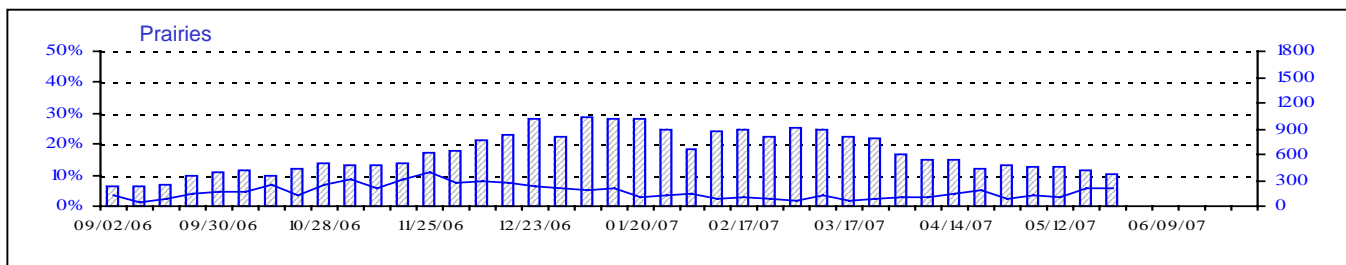
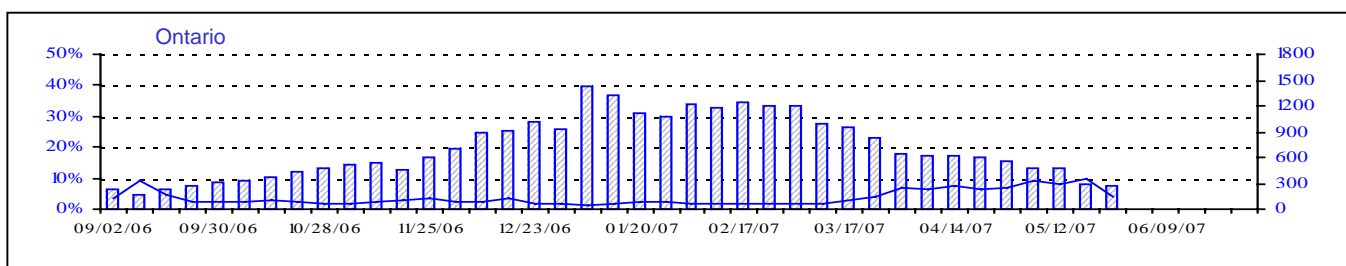
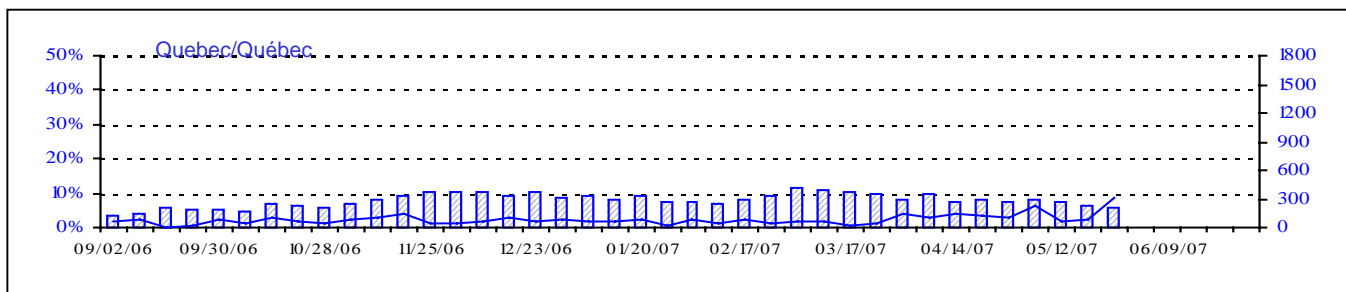
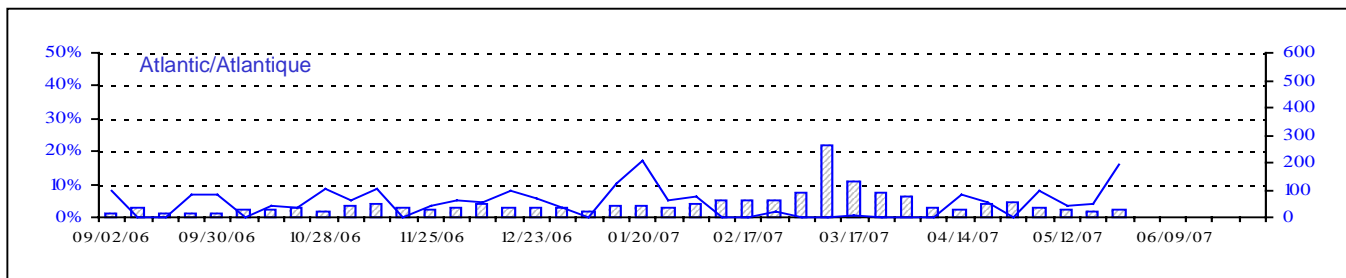
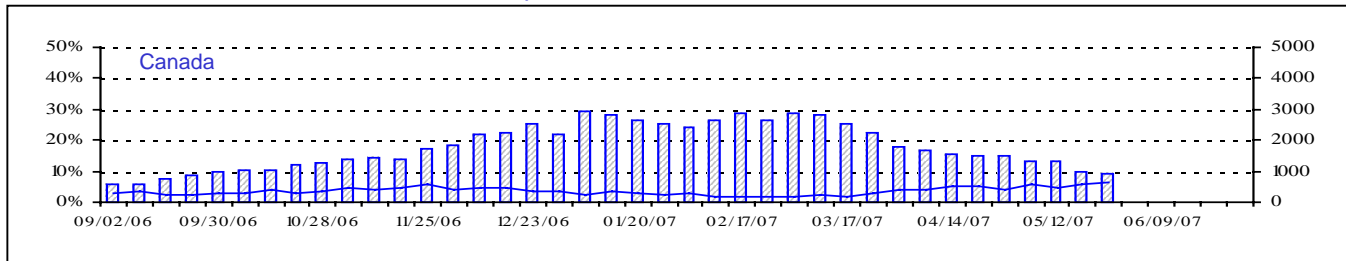
Positive RSV Tests (%) in Canada by Region by Week of Report
 Détection du virus respiratoire syncytial au Canada, tests positifs (%) par région
 par semaine de déclaration



▨ Total Tests — % Positive

Total Tests Total

Positive Parainfluenza Tests (%) in Canada by Region by Week of Report
 Détection du virus parainfluenza au Canada, tests positifs (%) par région
 par semaine de déclaration



Total Tests Total

▨ Total Tests — % Tests Positive

Positive Adenovirus Tests (%) in Canada by Region by Week of Report
 Détection des adénovirus au Canada, tests positifs (%) par région
 par semaine de déclaration

