

Table 1/Tableau 1
 Respiratory Virus Detections/Isolations for the week ending June 16, 2007 (Reporting Week 200724)
 Détection/isolement de virus des voies respiratoires pour la semaine se terminant le 16 juin 2007 (Code hebdomadaire 200724)

Reporting Laboratory Laboratoire rapporteur	Flu/Grippe Test	Flu/Grippe A Pos.	Flu/Grippe B Pos.	R.S.V. Test	R.S.V. Pos.	PIV Test	PIV 1 Pos.	PIV 2 Pos.	PIV 3 Pos.	PIV 4 Pos.	Other/Autre PIV Pos.	Adeno Test	Adeno Pos.
Newfoundland./Terre-Neuve	17	0	0	7	0	4	0	0	0	0	0	5	0
Prince Edward Island./ Île-du-Prince-Édouard	2	0	0	4	0	2	0	0	0	0	0	2	0
Nova Scotia/Nouvelle-Écosse	11	0	0	11	0	11	0	0	0	0	0	11	0
New Brunswick/Nouveau-Brunswick	17	2	3	10	0	9	0	0	0	0	0	9	0
Atlantic/Atlantique	47	2	3	32	0	26	0	0	0	0	0	27	0
Région Nord-Est	8	0	0	3	2	0	0	0	0	0	0	0	0
Québec-Chaudière-Appalaches	40	0	0	62	0	38	0	0	0	0	0	51	1
Centre-du-Québec	7	0	0	10	0	7	0	0	0	0	0	8	1
Montréal-Laval	129	0	1	138	5	120	1	0	9	0	0	130	0
Ouest du Québec	2	0	0	2	0	0	0	0	0	0	0	0	0
Montérégie	6	0	0	3	0	0	0	0	0	0	0	0	0
Province of/de Québec	192	0	1	218	7	165	1	0	9	0	0	189	2
Ottawa P.H.L.	-	-	-	-	-	-	-	-	-	-	-	-	-
CHEO/HEEO - Ottawa	-	-	-	-	-	-	-	-	-	-	-	-	-
Kingston	-	-	-	-	-	-	-	-	-	-	-	-	-
Toronto Medical Laboratory	29	0	0	29	0	29	0	0	0	0	0	29	0
C.P.H.L. - Toronto	72	0	0	73	0	69	0	0	1	0	0	69	0
Sick Kids/Hospital - Toronto	68	0	0	68	0	68	1	1	2	3	0	68	1
Sunnybrook & Women's College HSC	14	0	0	14	0	14	0	0	0	0	0	14	0
Sault Ste. Marie	1	0	0	1	1	1	0	0	0	0	0	1	0
Timmins	0	0	0	0	0	0	0	0	0	0	0	0	0
St. Joseph's - London	8	0	0	8	0	8	0	0	1	0	0	8	0
London P.H.L.	23	0	0	23	0	23	0	0	0	0	0	23	0
Orillia P.H.L.	7	0	0	7	0	7	0	0	0	0	0	7	0
Windsor	2	0	0	2	0	2	0	0	0	0	0	2	0
Thunder Bay	2	0	0	0	0	2	0	0	0	0	0	2	0
Sudbury P.H.L.	5	0	0	5	0	5	0	0	1	0	0	5	0
Hamilton P.H.L.	0	0	0	1	0	0	0	0	0	0	0	0	0
Peterborough P.H.L.	4	0	0	4	0	4	0	0	0	0	0	4	0
Province of/de l'Ontario	235	0	0	235	1	232	1	1	5	3	0	232	1
Manitoba	33	0	0	31	0	31	0	0	2	0	0	31	1
Regina	48	0	0	48	1	48	0	0	4	0	0	48	1
Saskatoon	15	0	0	11	0	15	0	0	0	0	1	15	0
Province of/de la Saskatchewan	63	0	0	59	1	63	0	0	4	0	1	63	1
Calgary	126	1	0	61	0	61	0	0	0	0	7	48	1
Edmonton	154	1	0	154	0	154	0	0	0	0	7	79	13
Province of/de l'Alberta	280	2	0	215	0	215	0	0	0	0	14	127	14
Prairies	376	2	0	305	1	309	0	0	6	0	15	221	16
British Columbia/Colombie-Britannique	8	0	0	8	0	8	0	0	2	0	0	8	0
CANADA	858	4	4	798	9	740	2	1	22	3	15	677	19

Also available at: <http://www.phac-aspc.gc.ca/bid-bmi/dsd-dsm/rvdi-divr/index.html>

Aussi disponible sur le site: http://www.phac-aspc.gc.ca/bid-bmi/dsd-dsm/rvdi-divr/index_f.html

Table 2/Tableau 2

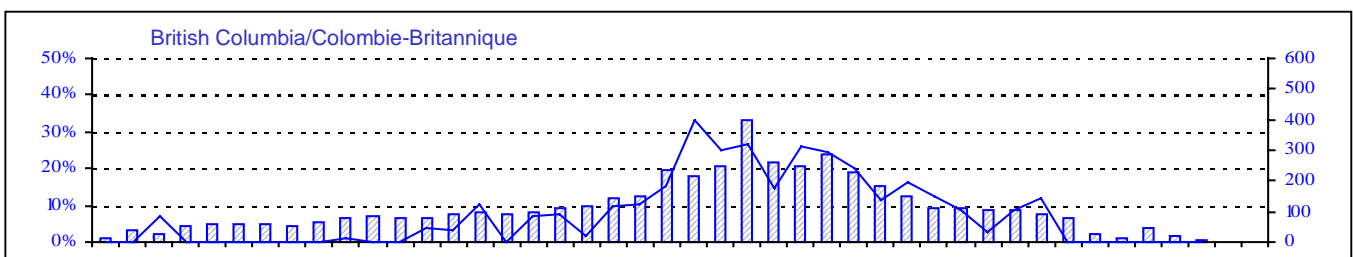
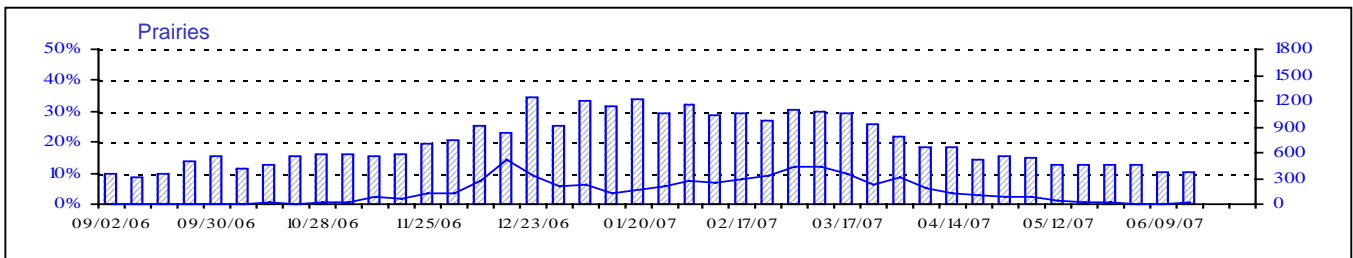
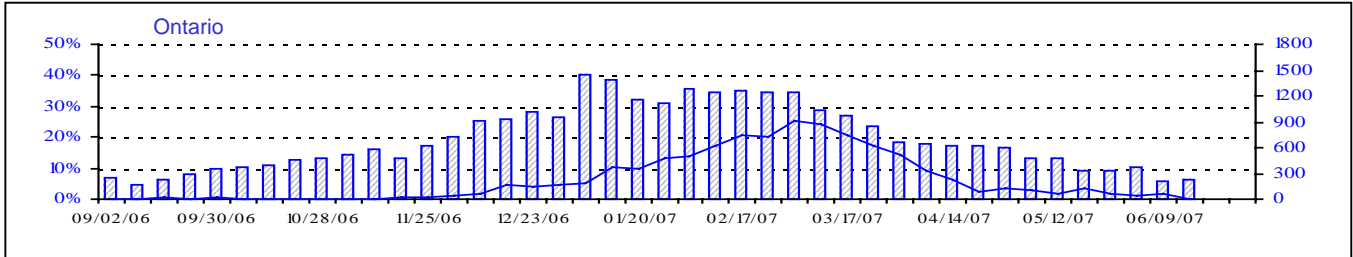
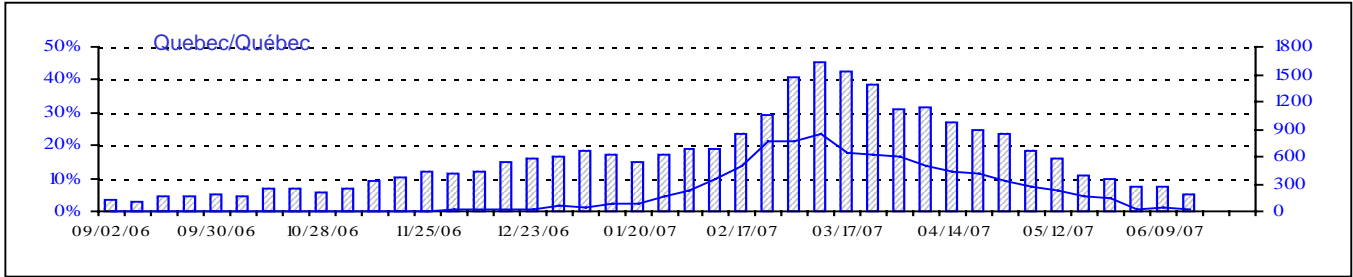
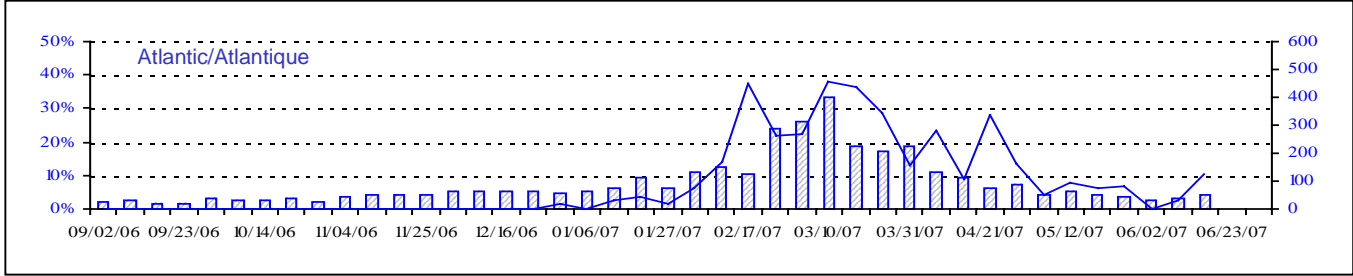
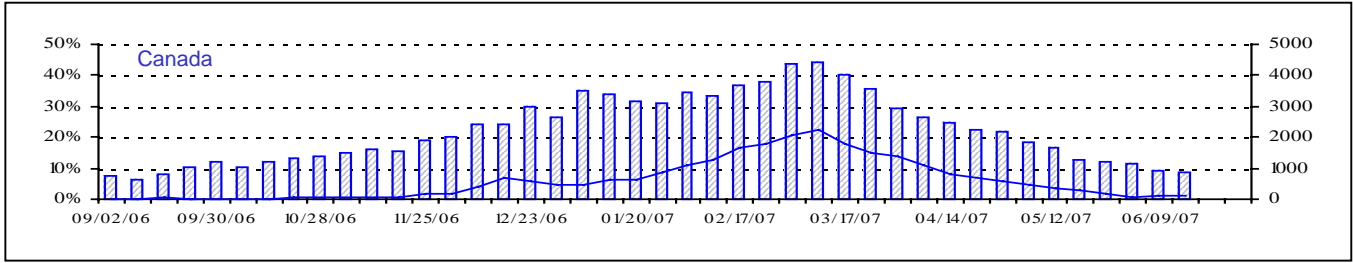
Respiratory Virus Detections/Isolations for the period August 27, 2006 - June 16, 2007
 Détection/isolement de virus des voies respiratoires pour la période du 27 août 2006 - 16 juin 2007
 (Reporting Weeks 200635 -200724/Code hebdomadaire 200635-200724)

Reporting Laboratory Laboratoire rapporteur	Flu/Grippe Test	Flu/Grippe A Pos.	Flu/Grippe B Pos.	R.S.V. Test	R.S.V. Pos.	PIV Test	PIV 1 Pos.	PIV 2 Pos.	PIV 3 Pos.	PIV 4 Pos.	Other/Autre PIV Pos.	Adeno Test	Adeno Pos.
Newfoundland./Terre-Neuve	1199	168	1	354	71	123	1	1	9	0	0	109	0
Prince Edward Island./ Île-du-Prince-Édouard	125	29	0	279	64	125	0	0	13	0	0	125	2
Nova Scotia/Nouvelle-Écosse	945	124	0	945	56	665	0	3	25	0	0	665	15
New Brunswick/Nouveau-Brunswick	1618	291	21	1083	20	997	0	0	7	0	0	1000	11
Atlantic/Atlantique	3887	612	22	2661	211	1910	1	4	54	0	0	1899	28
Région Nord-Est	2383	243	136	749	232	0	0	0	0	0	0	0	0
Québec-Chaudière-Appalaches	4015	267	141	4244	589	2407	4	1	42	10	0	3262	104
Centre-du-Québec	4441	318	220	1760	491	373	0	0	3	0	0	387	5
Montréal-Laval	11347	526	234	11569	1714	8869	22	4	169	28	0	9722	231
Ouest du Québec	1279	155	64	805	306	0	0	0	0	0	0	0	0
Montréal	1466	169	39	849	353	0	0	0	0	0	0	0	0
Province of/de Québec	24931	1678	834	19976	3685	11649	26	5	214	38	0	13371	340
Ottawa P.H.L.	170	9	0	85	2	0	0	0	0	0	0	0	0
CHEO/HEEO - Ottawa	2756	240	15	2756	675	2756	0	0	51	0	0	2756	34
Kingston	1411	147	4	1411	92	1411	2	5	48	0	0	1411	6
Toronto Medical Laboratory	1172	22	1	1172	66	1172	0	1	12	0	0	1172	1
C.P.H.L. - Toronto	9793	795	19	10459	732	9224	27	5	264	22	0	9224	103
Sick Kids' Hospital - Toronto	3997	157	7	3997	490	3997	11	2	94	57	0	3997	75
Sunnybrook & Women's College HSC	635	23	1	635	9	635	0	0	12	0	0	635	0
Sault Ste. Marie	254	27	0	254	58	254	0	1	7	0	0	254	1
Timmins	359	56	1	359	60	359	0	0	15	1	0	359	6
St.Joseph's-London	893	42	5	893	150	893	0	1	17	0	5	893	3
London P.H.L.	3172	457	1	3172	359	3172	3	0	82	2	0	3172	16
Orillia P.H.L.	1451	211	0	1451	156	1451	2	1	47	0	7	1451	28
Windsor	521	67	6	528	21	376	0	0	6	1	0	376	5
Thunder Bay	422	58	0	407	42	422	0	0	13	4	0	420	3
Sudbury P.H.L.	369	42	0	369	20	369	0	0	18	0	0	382	6
Hamilton P.H.L.	420	36	0	523	63	420	0	2	6	0	0	420	0
Peterborough P.H.L.	1683	267	2	1683	168	1683	5	1	47	0	0	1683	10
Province of/de l'Ontario	29478	2656	62	30154	3163	28594	50	19	739	87	12	28605	297
Manitoba	2120	76	0	2429	211	1964	0	2	74	0	0	1964	27
Regina	4453	259	3	4453	413	4453	0	24	148	0	0	4453	51
Saskatoon	1043	52	4	900	238	1045	0	0	0	0	54	1045	13
Province of/de la Saskatchewan	5496	311	7	5353	651	5498	0	24	148	0	54	5498	64
Calgary	9667	394	21	4925	256	4925	0	0	0	0	202	3964	88
Edmonton	13159	767	27	13366	2094	12794	0	0	0	0	649	5716	380
Province of/de l'Alberta	22826	1161	48	18291	2350	17719	0	0	0	0	851	9680	468
Prairies	30442	1548	55	26073	3212	25181	0	26	222	0	905	17142	559
British Columbia/Colombie-Britannique	4804	611	40	4804	104	4804	2	14	41	4	0	4804	28
CANADA	93542	7105	1013	83668	10375	72138	79	68	1270	129	917	65821	1252

Also available at: <http://www.phac-aspc.gc.ca/bid-bmi/dsd-dsm/rvdi-divr/index-html>

Aussi disponible sur le site: http://www.phac-aspc.gc.ca/bid-bmi/dsd-dsm/rvdi-divr/index_f.html

Positive Influenza Tests (%) in Canada by Region by Week of Report Détection du virus grippal au Canada, tests positifs (%) par région par semaine de déclaration

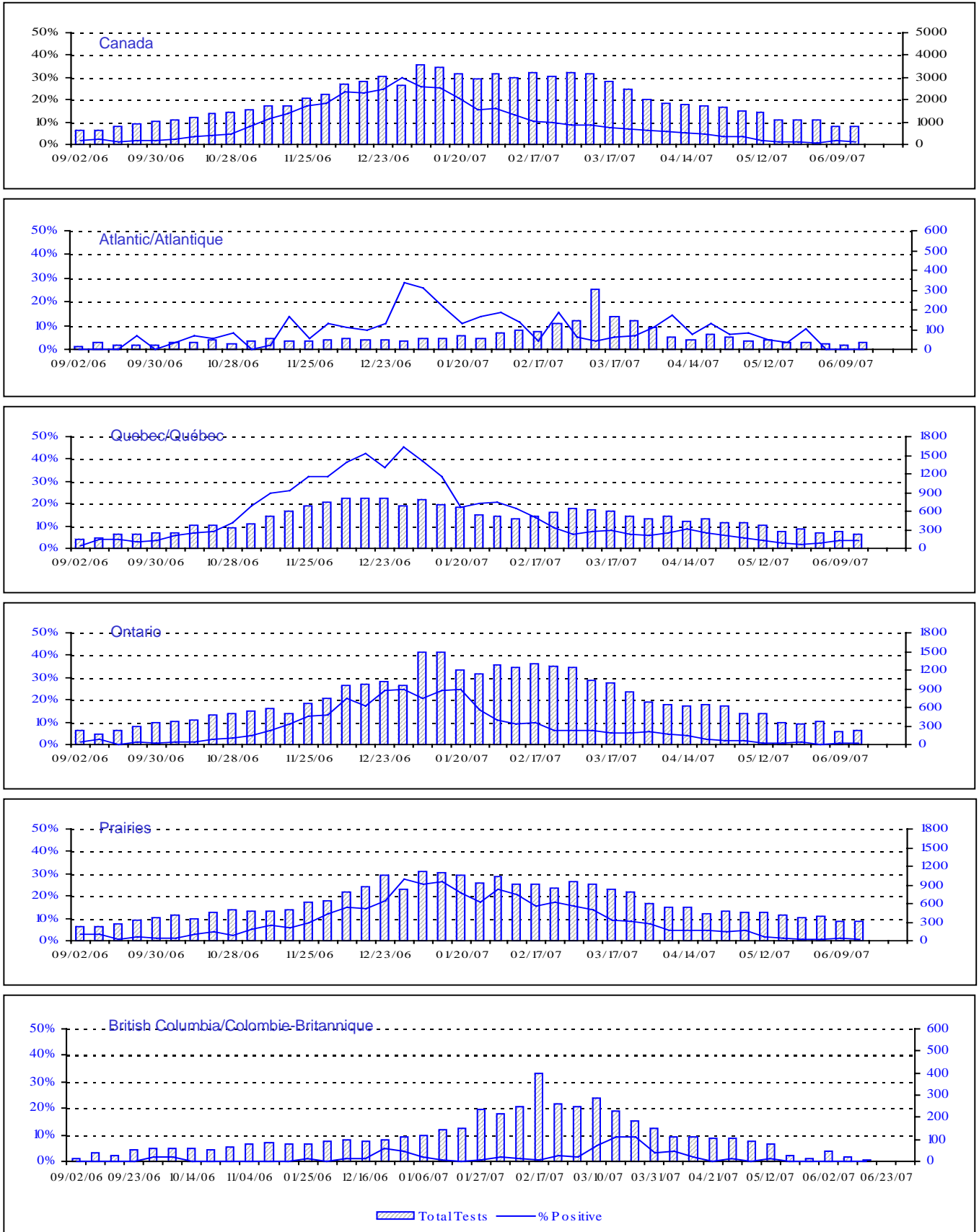


Total Tests
 % Tests Positive

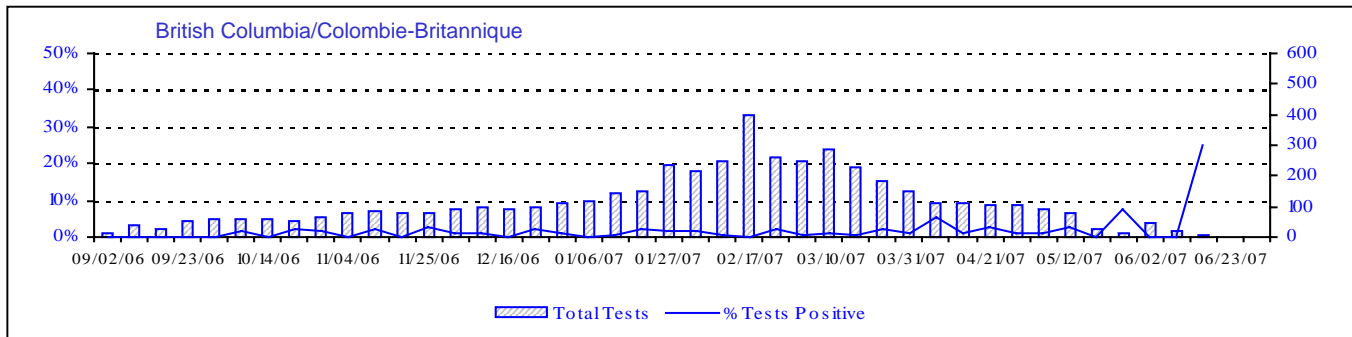
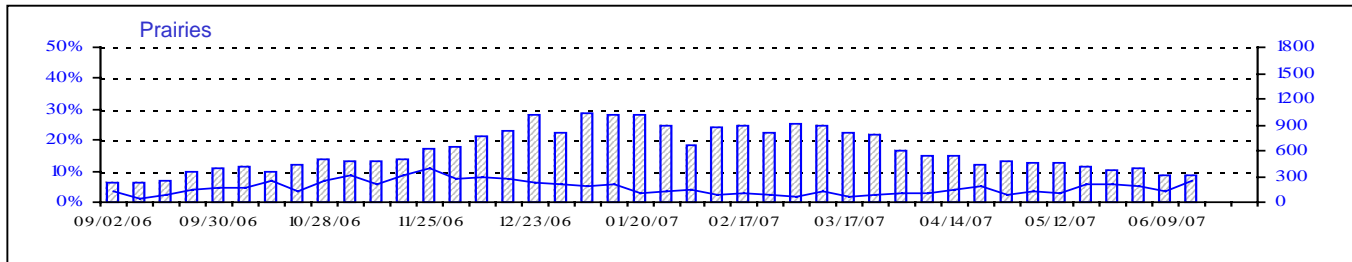
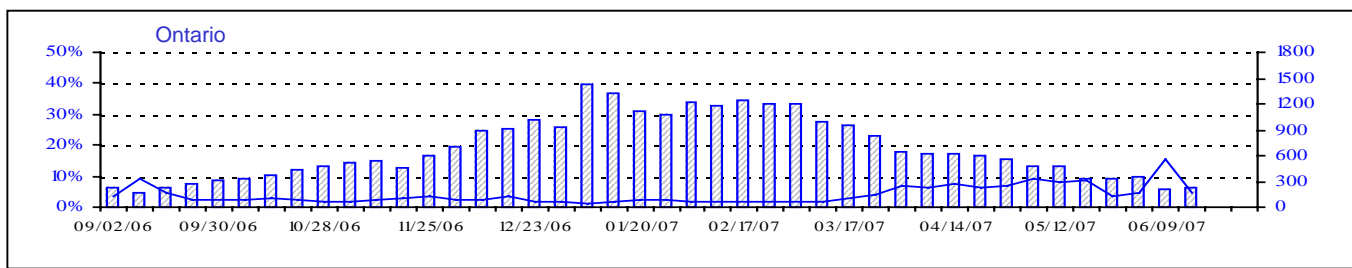
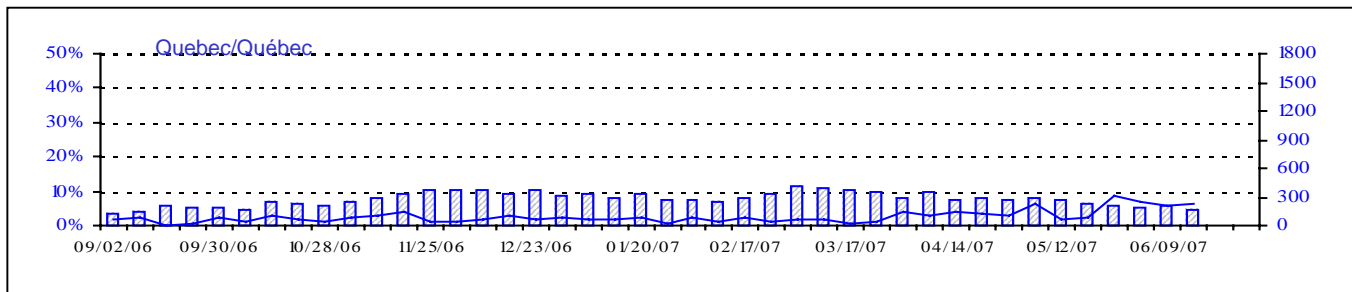
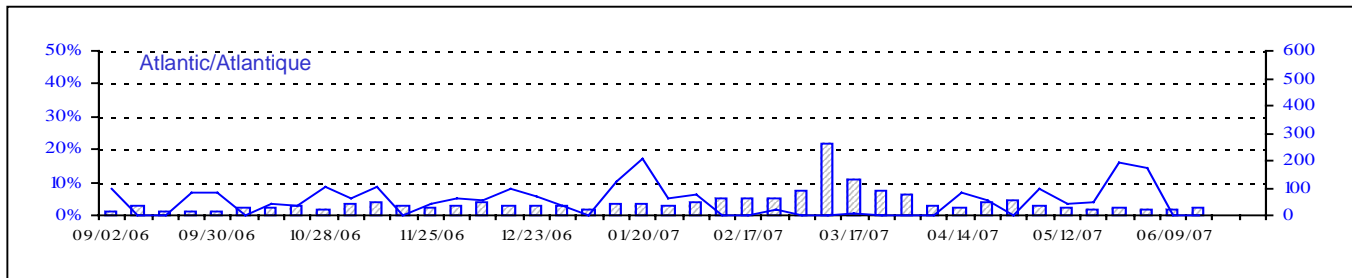
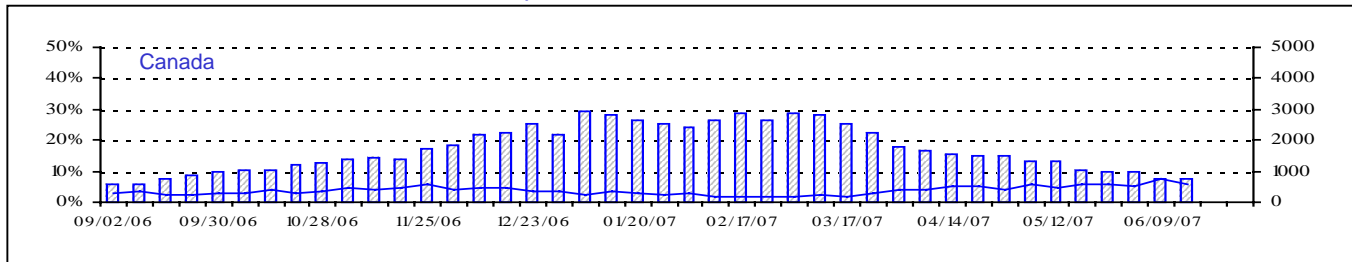
Total Tests Total

Positive RSV Tests (%) in Canada by Region by Week of Report

Détection du virus respiratoire syncytial au Canada, tests positifs (%) par région par semaine de déclaration



Positive Parainfluenza Tests (%) in Canada by Region by Week of Report
 Détection du virus parainfluenza au Canada, tests positifs (%) par région
 par semaine de déclaration



Total Tests Total

▨ Total Tests — % Tests Positive

Positive Adenovirus Tests (%) in Canada by Region by Week of Report
 Détection des adénovirus au Canada, tests positifs (%) par région
 par semaine de déclaration

