

Table 1/Tableau 1

Respiratory Virus Detections/Isolations for the week ending July 14, 2007 (Reporting Week 200728)  
 Détection/isolement de virus des voies respiratoires pour la semaine se terminant le 14 juillet 2007 (Code hebdomadaire 200728)

Reporting Laboratory Laboratoire rapporteur	Flu/Grippe Test	Flu/Grippe A Pos.	Flu/Grippe B Pos.	R.S.V. Test	R.S.V. Pos.	PIV Test	PIV 1 Pos.	PIV 2 Pos.	PIV 3 Pos.	PIV 4 Pos.	Other/Autre PIV Pos.	Adeno Test	Adeno Pos.
Newfoundland./Terre-Neuve	5	0	0	6	0	2	0	0	0	0	0	3	1
Prince Edward Island./ Île-du-Prince-Édouard	1	0	0	0	0	1	0	0	0	0	0	1	0
Nova Scotia/Nouvelle-Écosse	11	0	1	11	0	11	1	0	0	0	0	11	1
New Brunswick/Nouveau-Brunswick	13	0	0	4	0	4	0	0	0	0	0	4	0
Atlantic/Atlantique	30	0	1	21	0	18	1	0	0	0	0	19	2
Région Nord-Est	3	0	0	1	0	0	0	0	0	0	0	0	0
Québec-Chaudière-Appalaches	23	0	0	27	0	19	0	0	0	0	0	38	1
Centre-du-Québec	2	0	0	7	0	4	0	0	0	0	0	4	1
Montréal-Laval	73	0	0	112	1	110	1	0	1	0	0	142	3
Ouest du Québec	1	0	0	0	0	0	0	0	0	0	0	0	0
Montérégie	0	0	0	0	0	0	0	0	0	0	0	0	0
Province of/de Québec	102	0	0	147	1	133	1	0	1	0	0	184	5
Ottawa P.H.L.	-	-	-	-	-	-	-	-	-	-	-	-	-
CHEO/HEEO - Ottawa	-	-	-	-	-	-	-	-	-	-	-	-	-
Kingston	1	0	0	1	0	1	0	0	0	0	0	1	0
Toronto Medical Laboratory	22	0	0	22	1	22	0	0	0	0	0	22	0
C.P.H.L. - Toronto	42	0	0	42	0	39	1	0	4	0	0	39	0
Sick Kids'Hospital - Toronto	40	0	0	40	0	40	0	0	3	0	0	40	0
Sunnybrook & Women's College HSC	6	0	0	6	0	6	0	0	0	0	0	6	0
Sault Ste. Marie	1	0	0	1	0	1	0	0	0	0	0	1	0
Timmins	2	0	0	2	0	2	0	0	0	0	0	2	0
St. Joseph's - London	4	0	0	4	0	4	0	0	0	0	0	4	0
London P.H.L.	15	0	0	15	0	15	0	0	0	0	0	15	0
Orillia P.H.L.	8	0	0	8	0	8	0	0	1	0	0	8	2
Windsor	0	0	0	0	0	0	0	0	0	0	0	0	0
Thunder Bay	15	0	0	15	0	15	0	0	0	0	0	15	0
Sudbury P.H.L.	6	0	0	6	0	6	0	0	0	0	0	8	0
Hamilton P.H.L.	0	0	0	0	0	0	0	0	0	0	0	0	0
Peterborough P.H.L.	4	0	0	4	1	4	0	0	0	0	0	4	0
Province of/de l'Ontario	166	0	0	166	2	163	1	0	8	0	0	165	2
Manitoba	38	0	0	41	0	38	0	0	1	0	0	38	0
Regina	48	0	0	48	0	48	0	0	0	0	0	48	4
Saskatoon	12	0	0	8	0	12	0	0	0	0	0	12	0
Province of/de la Saskatchewan	60	0	0	56	0	60	0	0	0	0	0	60	4
Calgary	158	0	0	70	0	93	0	0	0	0	2	64	1
Edmonton	148	0	0	143	0	148	0	0	0	0	3	85	7
Province of/de l'Alberta	306	0	0	213	0	241	0	0	0	0	5	149	8
Prairies	404	0	0	310	0	339	0	0	1	0	5	247	12
British Columbia/Colombie-Britannique	16	0	0	16	0	16	0	0	0	0	0	16	0
CANADA	718	0	1	660	3	669	3	0	10	0	5	631	21

Also available at: <http://www.phac-aspc.gc.ca/bid-bmi/dsd-dsm/rvdi-divr/index-html>

Aussi disponible sur le site: [http://www.phac-aspc.gc.ca/bid-bmi/dsd-dsm/rvdi-divr/index\\_f.html](http://www.phac-aspc.gc.ca/bid-bmi/dsd-dsm/rvdi-divr/index_f.html)

Table 2/Tableau 2

Respiratory Virus Detections/Isolations for the period August 27, 2006 - July 14, 2007  
 Détection/isolement de virus des voies respiratoires pour la période du 27 août 2006 - 14 juillet 2007  
 (Reporting Weeks 200635 -200728/Code hebdomadaire 200635-200728)

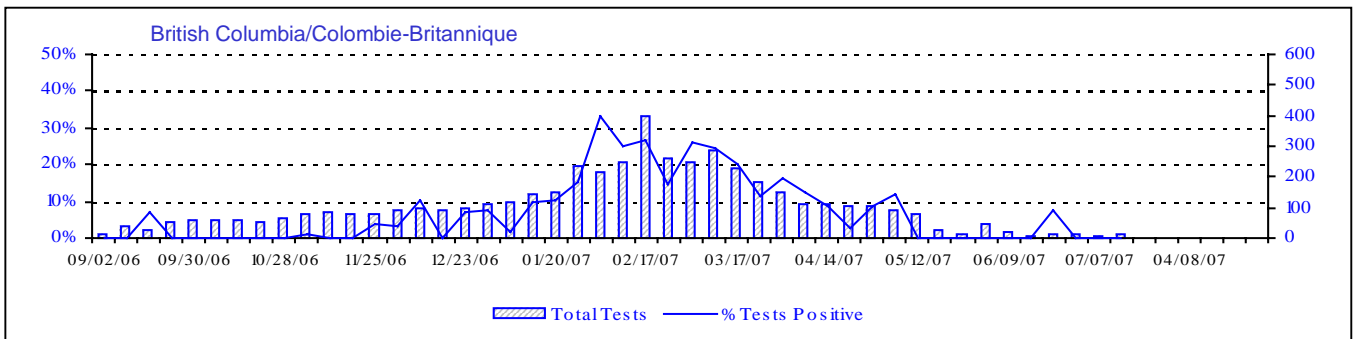
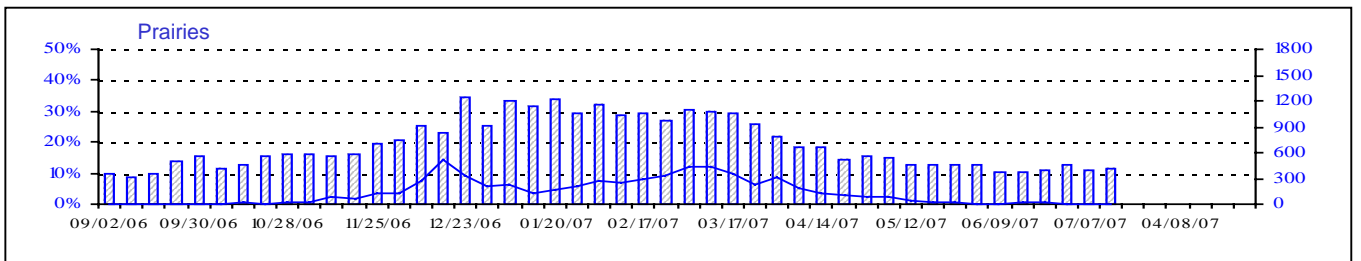
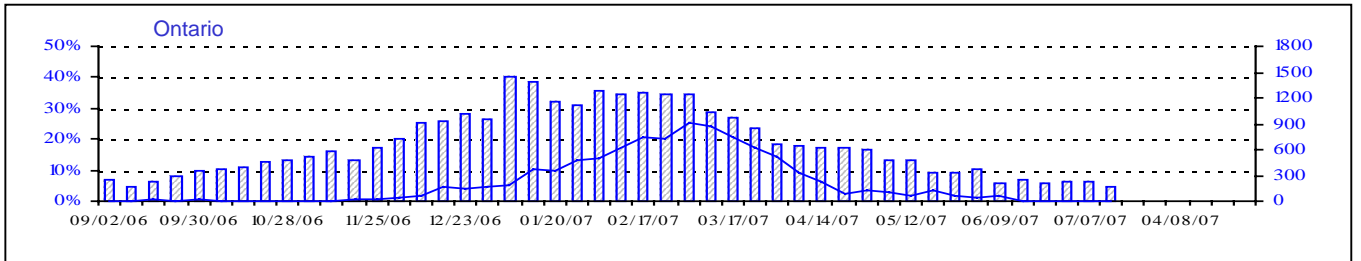
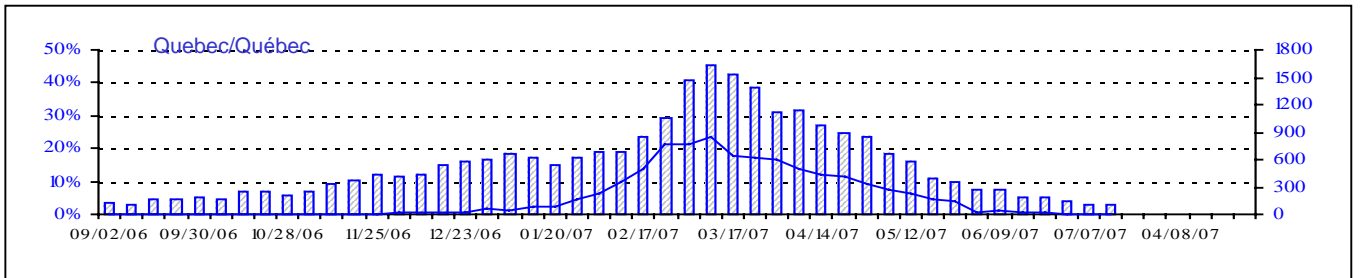
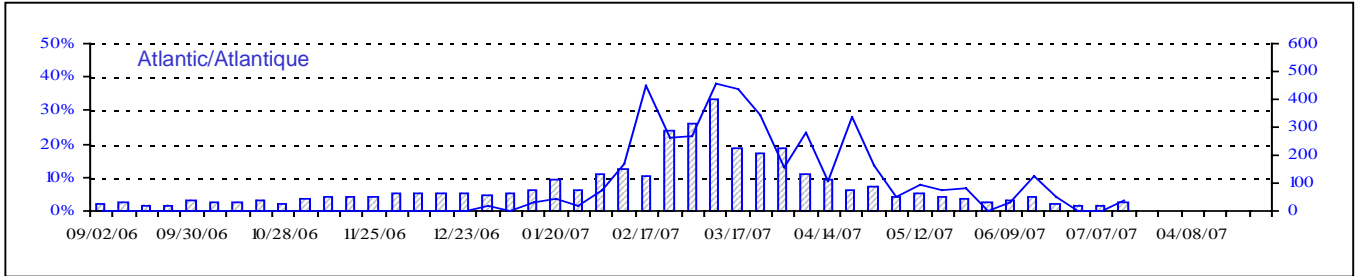
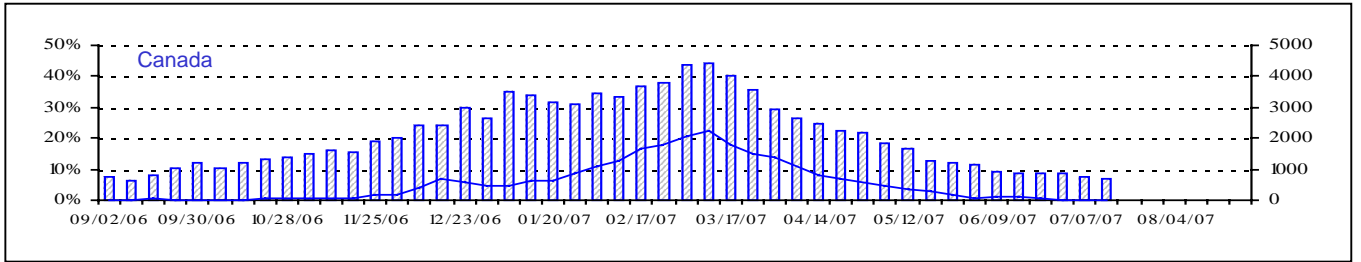
Reporting Laboratory Laboratoire rapporteur	Flu/Grippe Test	Flu/Grippe A Pos.	Flu/Grippe B Pos.	R.S.V. Test	R.S.V. Pos.	PIV Test	PIV 1 Pos.	PIV 2 Pos.	PIV 3 Pos.	PIV 4 Pos.	Other/Autre PIV Pos.	Adeno Test	Adeno Pos.
Newfoundland./Terre-Neuve	1228	168	1	380	71	141	1	1	10	0	0	130	1
Prince Edward Island./ Île-du-Prince-Édouard	130	29	0	284	64	130	0	0	13	0	0	130	2
Nova Scotia/Nouvelle-Écosse	969	124	1	969	56	689	1	3	26	0	0	689	17
New Brunswick/Nouveau-Brunswick	1651	291	22	1101	20	1013	0	0	7	0	0	1014	11
Atlantic/Atlantique	3978	612	24	2734	211	1973	2	4	56	0	0	1963	31
Région Nord-Est	2401	243	137	762	232	0	0	0	0	0	0	0	0
Québec-Chaudière-Appalaches	4126	267	141	4370	589	2504	4	1	44	10	0	3402	109
Centre-du-Québec	4455	318	220	1787	491	389	0	0	3	0	0	403	6
Montréal-Laval	11742	526	234	12095	1720	9348	29	4	179	28	0	10283	241
Ouest du Québec	1283	155	64	813	306	0	0	0	0	0	0	0	0
Montréal	1471	169	39	852	353	0	0	0	0	0	0	0	0
Province of/de Québec	25478	1678	835	20679	3691	12241	33	5	226	38	0	14088	356
Ottawa P.H.L.	170	9	0	85	2	0	0	0	0	0	0	0	0
CHEO/HEEO - Ottawa	2756	240	15	2756	675	2756	0	0	51	0	0	2756	34
Kingston	1438	147	4	1438	92	1438	2	5	49	0	0	1438	7
Toronto Medical Laboratory	1245	22	1	1245	67	1245	0	1	12	0	0	1230	1
C.P.H.L. - Toronto	10035	795	19	10704	732	9446	31	5	276	22	0	9446	108
Sick Kids' Hospital - Toronto	4201	157	7	4201	490	4201	17	3	105	58	0	4201	79
Sunnybrook & Women's College HSC	663	23	1	663	9	663	0	0	14	0	0	663	0
Sault Ste. Marie	259	27	0	259	58	259	0	1	8	0	0	259	1
Timmins	365	56	1	365	60	365	0	0	15	1	0	365	6
St.Joseph's-London	965	42	5	965	150	965	0	1	19	0	11	965	3
London P.H.L.	3244	457	1	3244	362	3244	3	0	83	2	0	3244	16
Orillia P.H.L.	1474	211	0	1474	156	1474	2	1	48	0	7	1474	33
Windsor	528	67	6	535	21	383	0	0	6	1	0	383	5
Thunder Bay	443	58	0	426	42	443	0	0	13	4	0	441	3
Sudbury P.H.L.	383	42	0	383	20	383	0	0	18	0	0	398	6
Hamilton P.H.L.	424	36	0	528	63	424	0	2	7	0	0	424	0
Peterborough P.H.L.	1714	267	2	1714	169	1714	5	1	48	0	0	1714	10
Province of/de l'Ontario	30307	2656	62	30985	3168	29403	60	20	772	88	18	29401	312
Manitoba	2266	76	0	2579	211	2105	0	2	75	0	0	2105	30
Regina	4629	259	3	4629	413	4629	0	25	152	0	0	4629	60
Saskatoon	1095	52	4	947	238	1097	0	0	0	0	57	1097	13
Province of/de la Saskatchewan	5724	311	7	5576	651	5726	0	25	152	0	57	5726	73
Calgary	10298	396	21	5224	256	5274	0	0	0	0	214	4274	94
Edmonton	13809	768	28	14011	2094	13458	0	0	0	0	664	6080	401
Province of/de l'Alberta	24107	1164	49	19235	2350	18732	0	0	0	0	878	10354	495
Prairies	32097	1551	56	27390	3212	26563	0	27	227	0	935	18185	598
British Columbia/Colombie-Britannique	4858	612	40	4858	104	4858	2	14	41	4	0	4858	31
CANADA	96718	7109	1017	86646	10386	75038	97	70	1322	130	953	68495	1328

Also available at: <http://www.phac-aspc.gc.ca/bid-bmi/dsd-dsm/rvdi-divr/index.html>

Aussi disponible sur le site: [http://www.phac-aspc.gc.ca/bid-bmi/dsd-dsm/rvdi-divr/index\\_f.html](http://www.phac-aspc.gc.ca/bid-bmi/dsd-dsm/rvdi-divr/index_f.html)

# Positive Influenza Tests (%) in Canada by Region by Week of Report

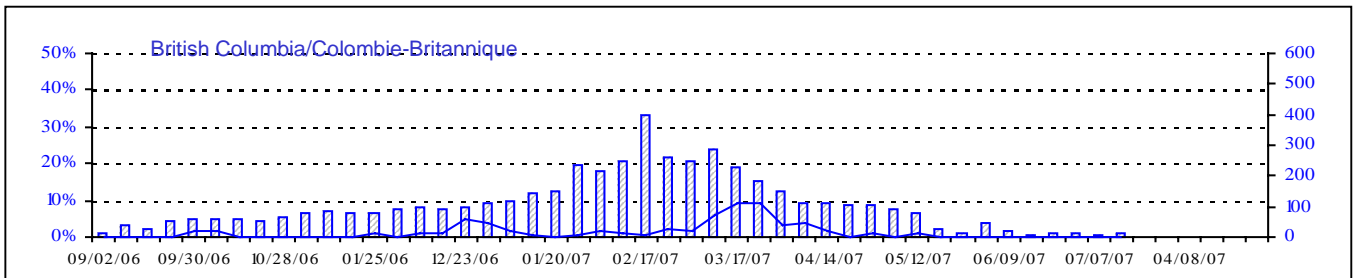
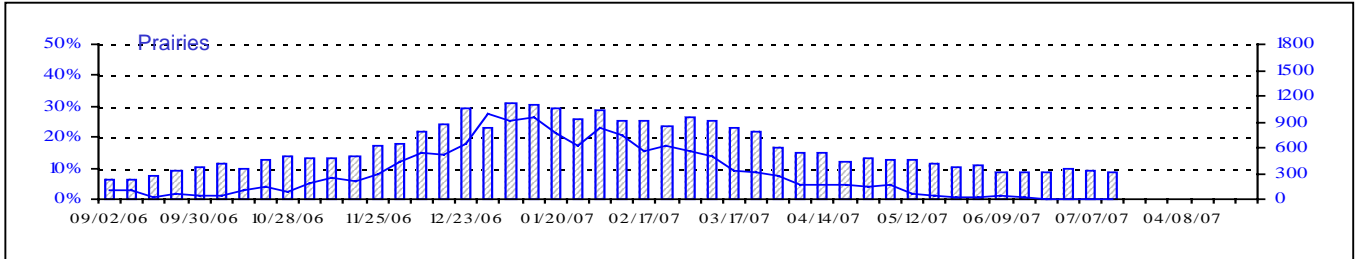
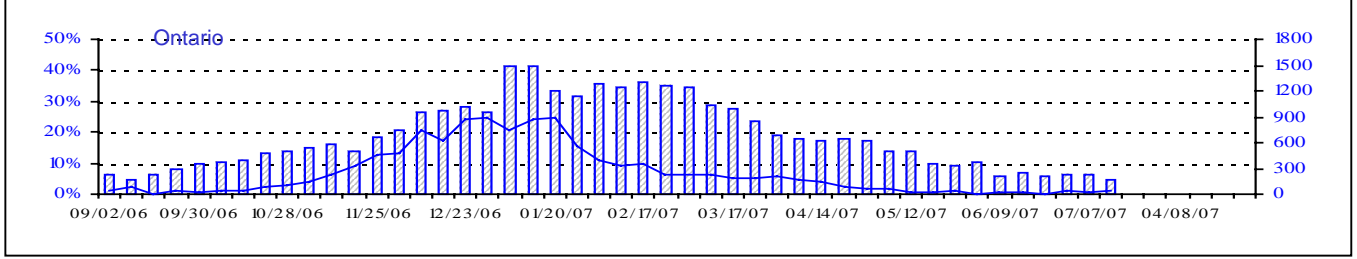
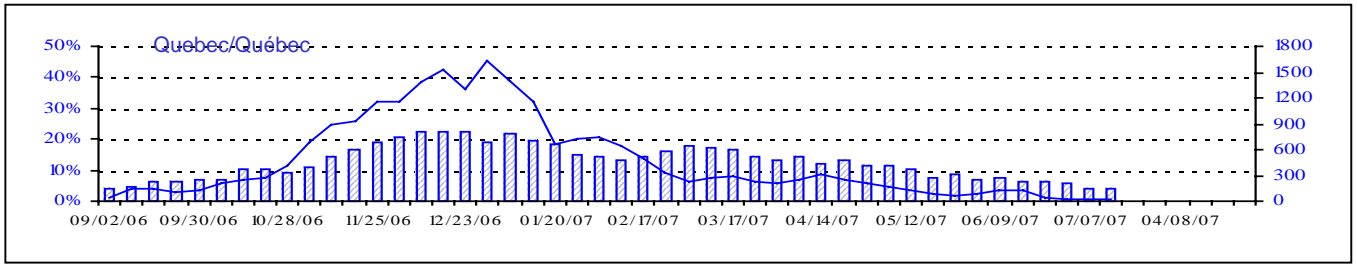
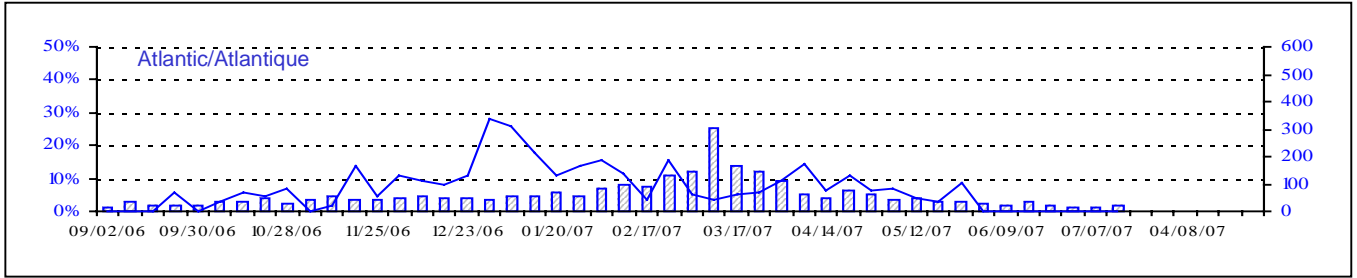
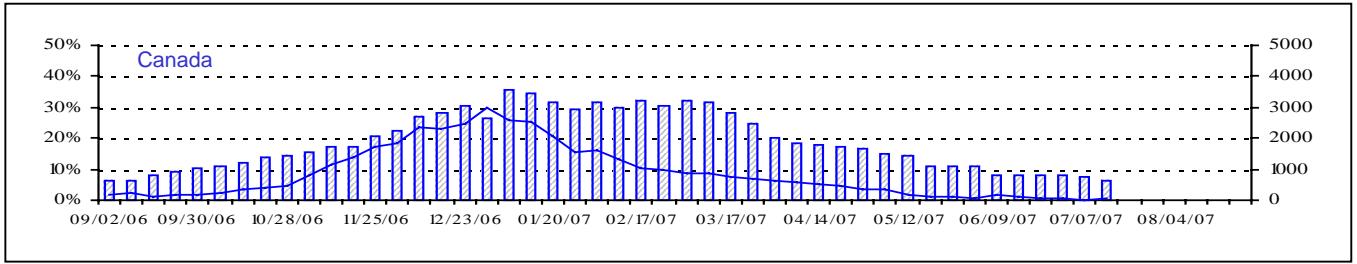
## Détection du virus grippal au Canada, tests positifs (%) par région par semaine de déclaration



Total Tests Total

Total Tests
  % Tests Positive

Positive RSV Tests (%) in Canada by Region by Week of Report  
 Détection du virus respiratoire syncytial au Canada, tests positifs (%) par région  
 par semaine de déclaration

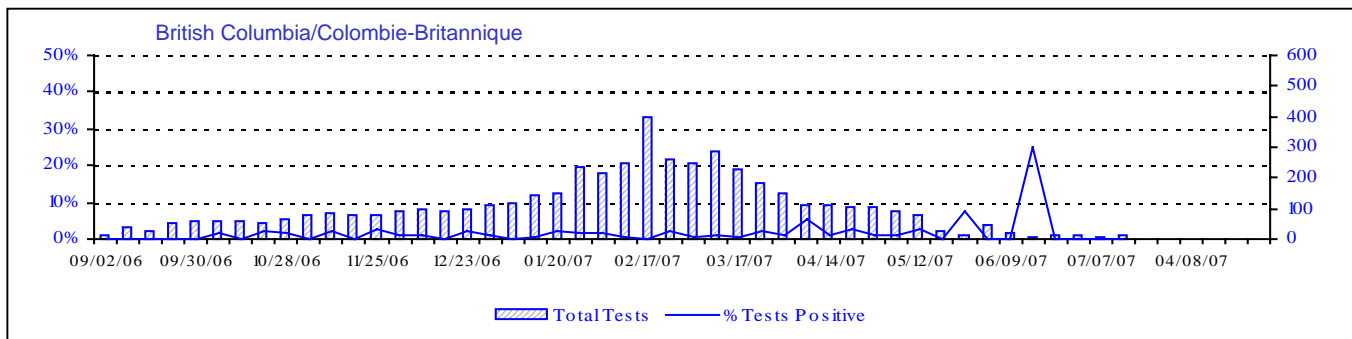
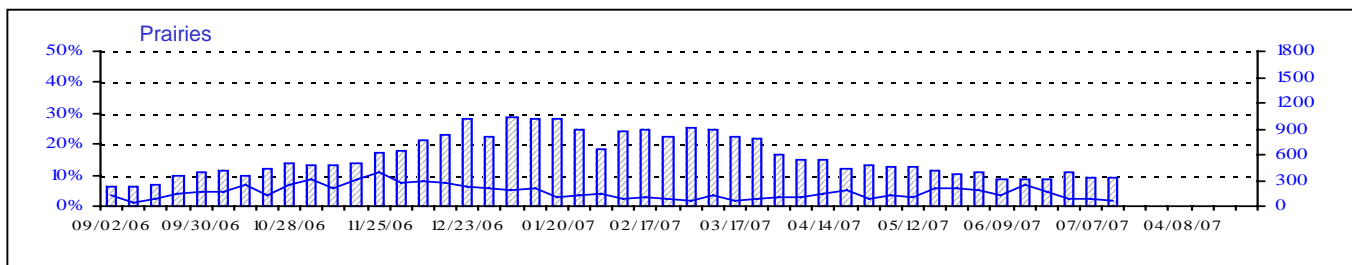
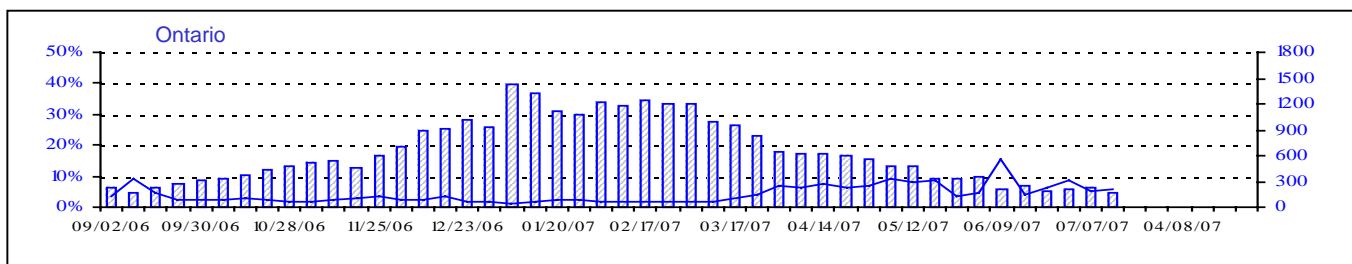
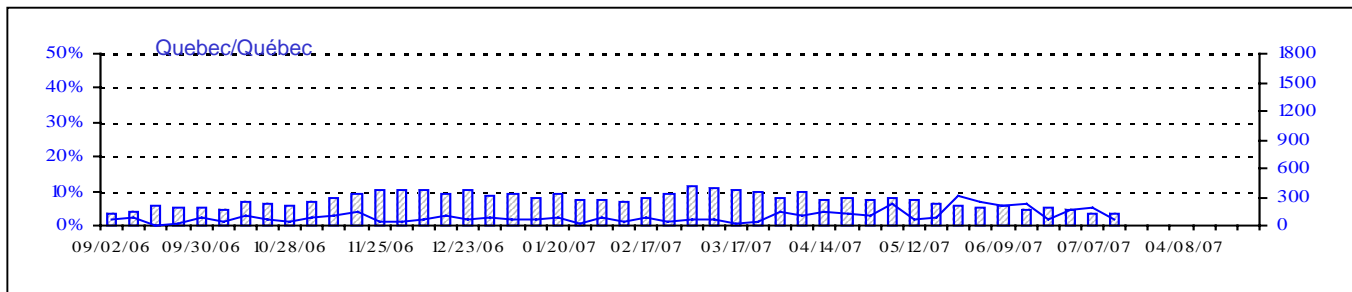
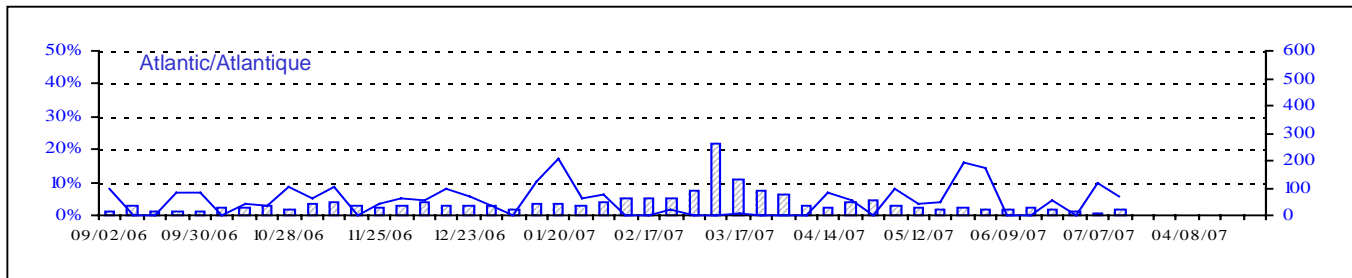
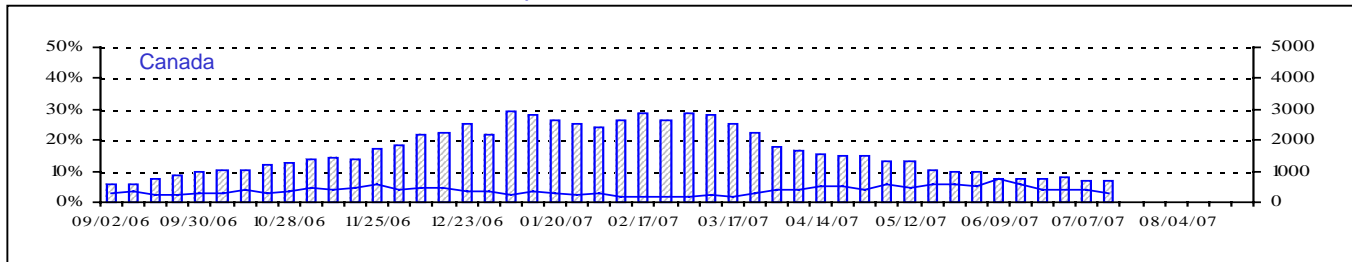


▨ Total Tests — % Positive

Total Tests Total

% Tests Positive/Positifs

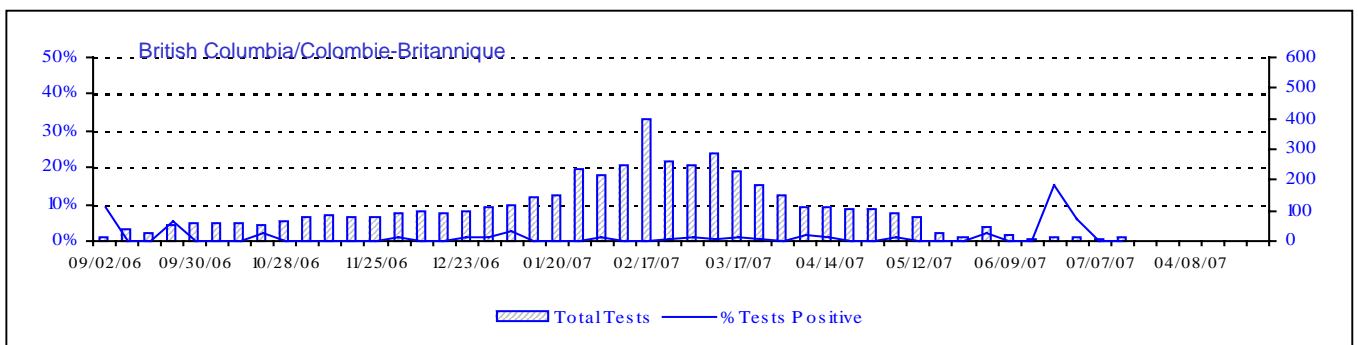
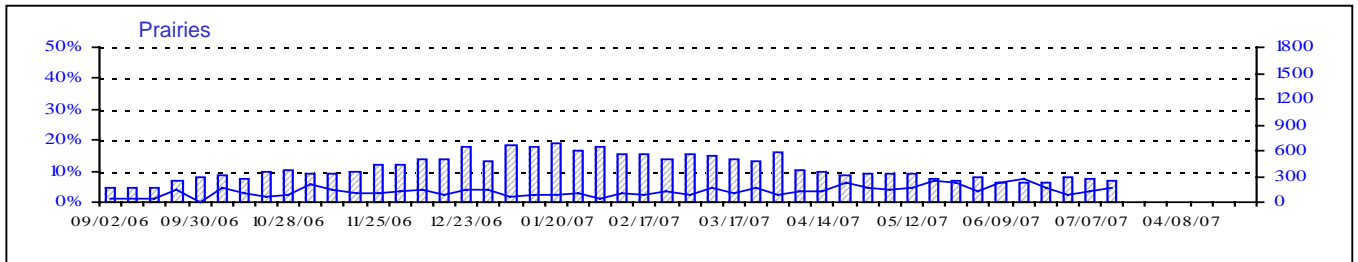
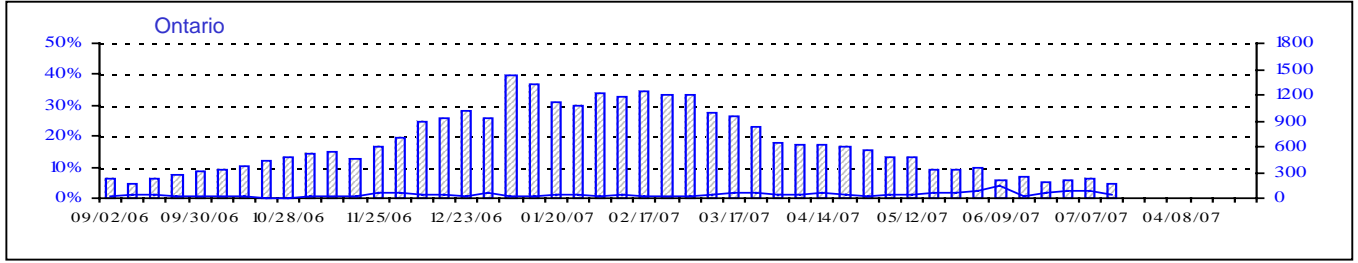
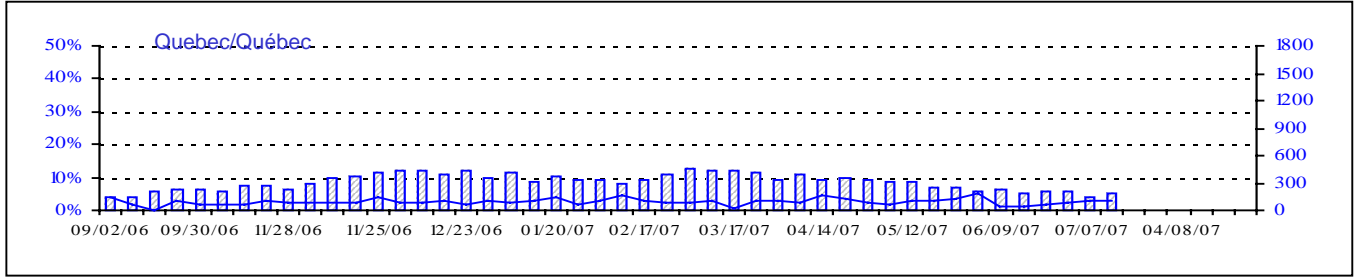
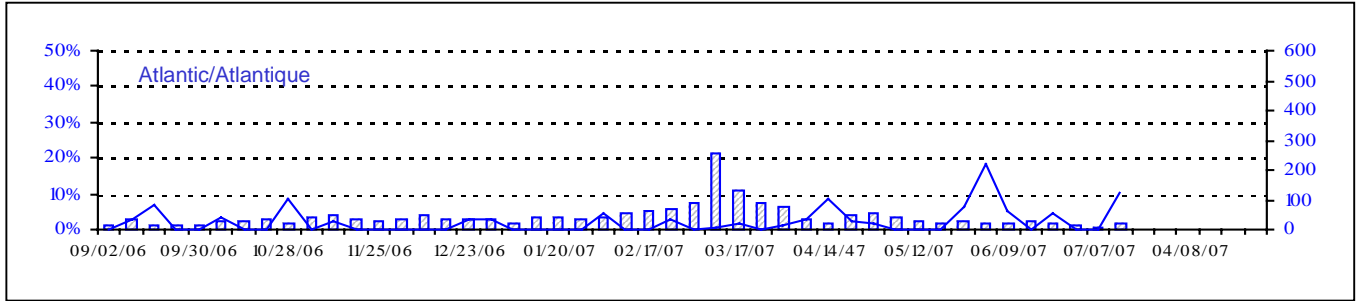
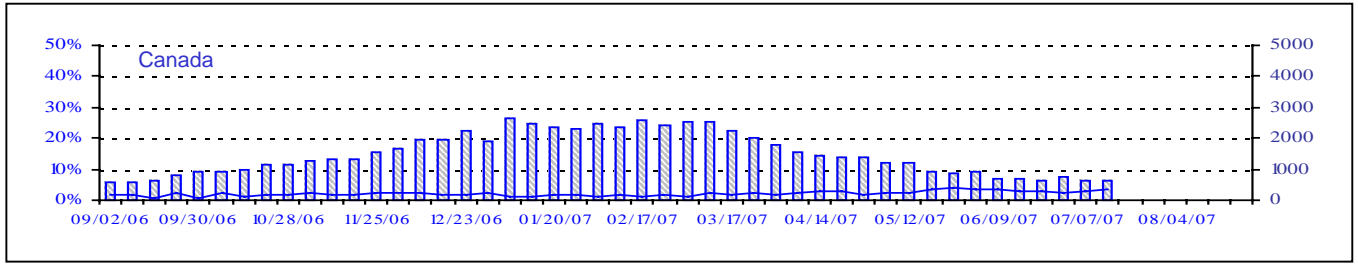
Positive Parainfluenza Tests (%) in Canada by Region by Week of Report  
 Détection du virus parainfluenza au Canada, tests positifs (%) par région  
 par semaine de déclaration



Total Tests Total

▨ Total Tests — % Tests Positive

Positive Adenovirus Tests (%) in Canada by Region by Week of Report  
 Détection des adénovirus au Canada, tests positifs (%) par région  
 par semaine de déclaration



Total Tests Total

% Tests Positive/Positifs

▨ Total Tests — % Tests Positive