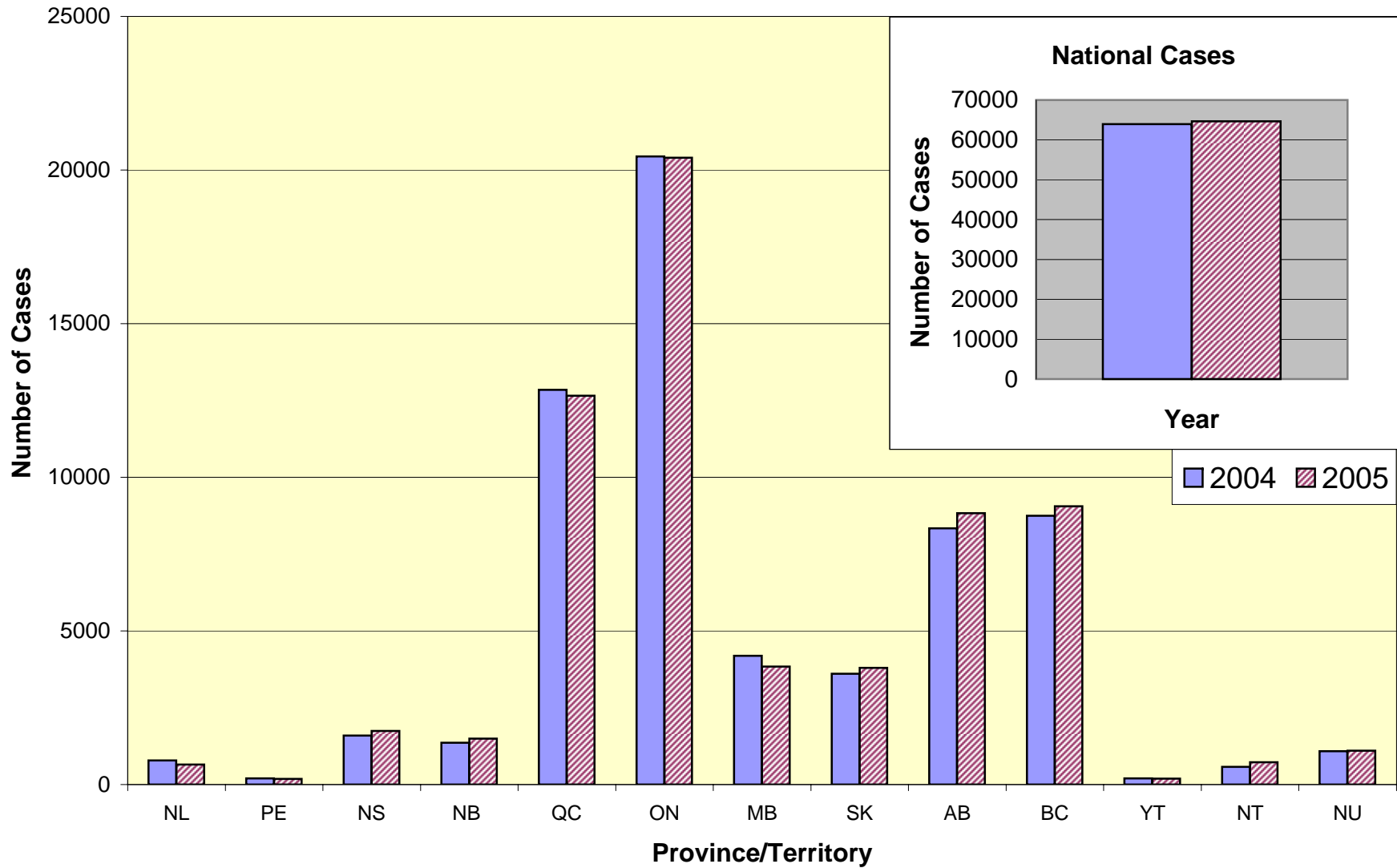
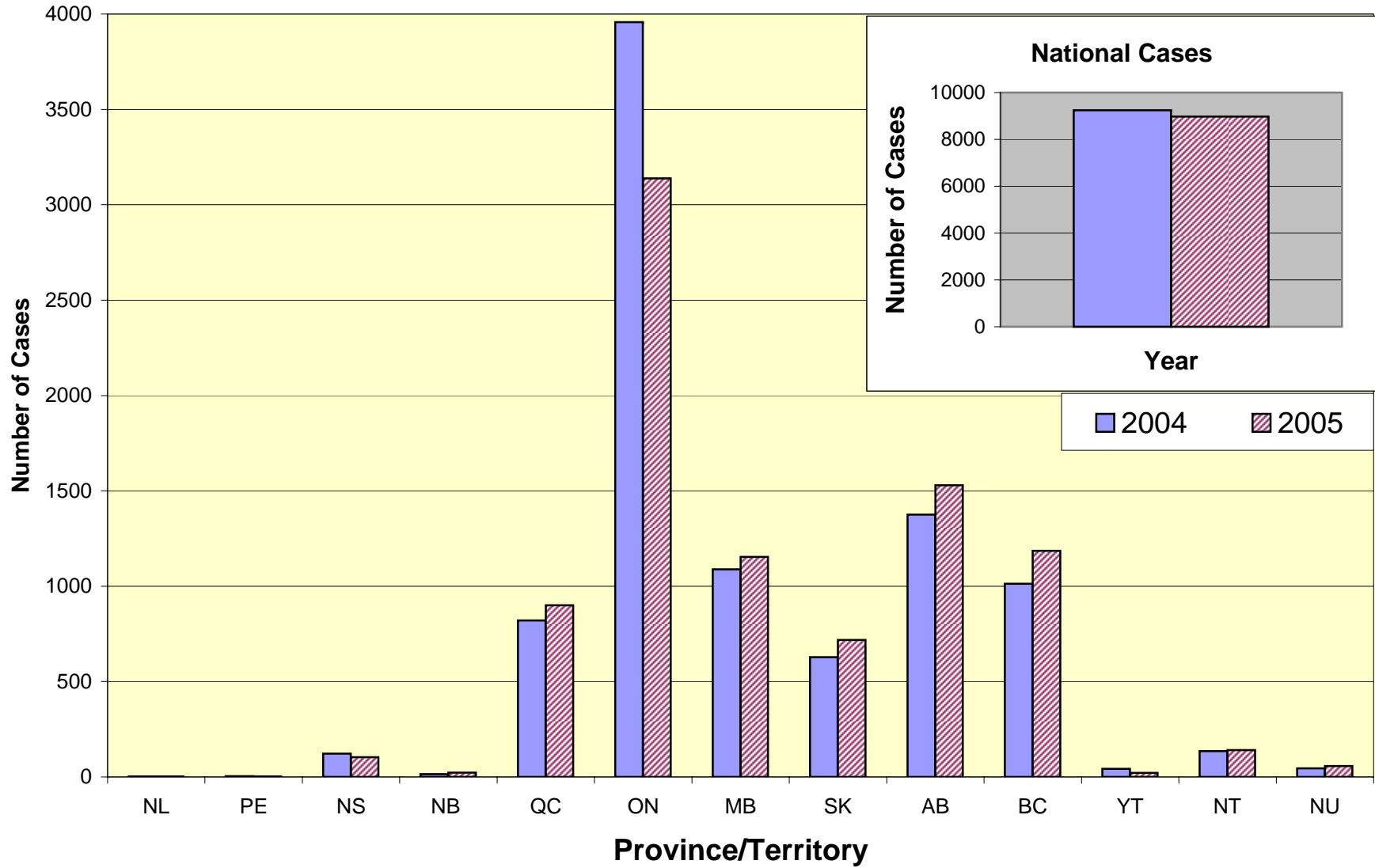


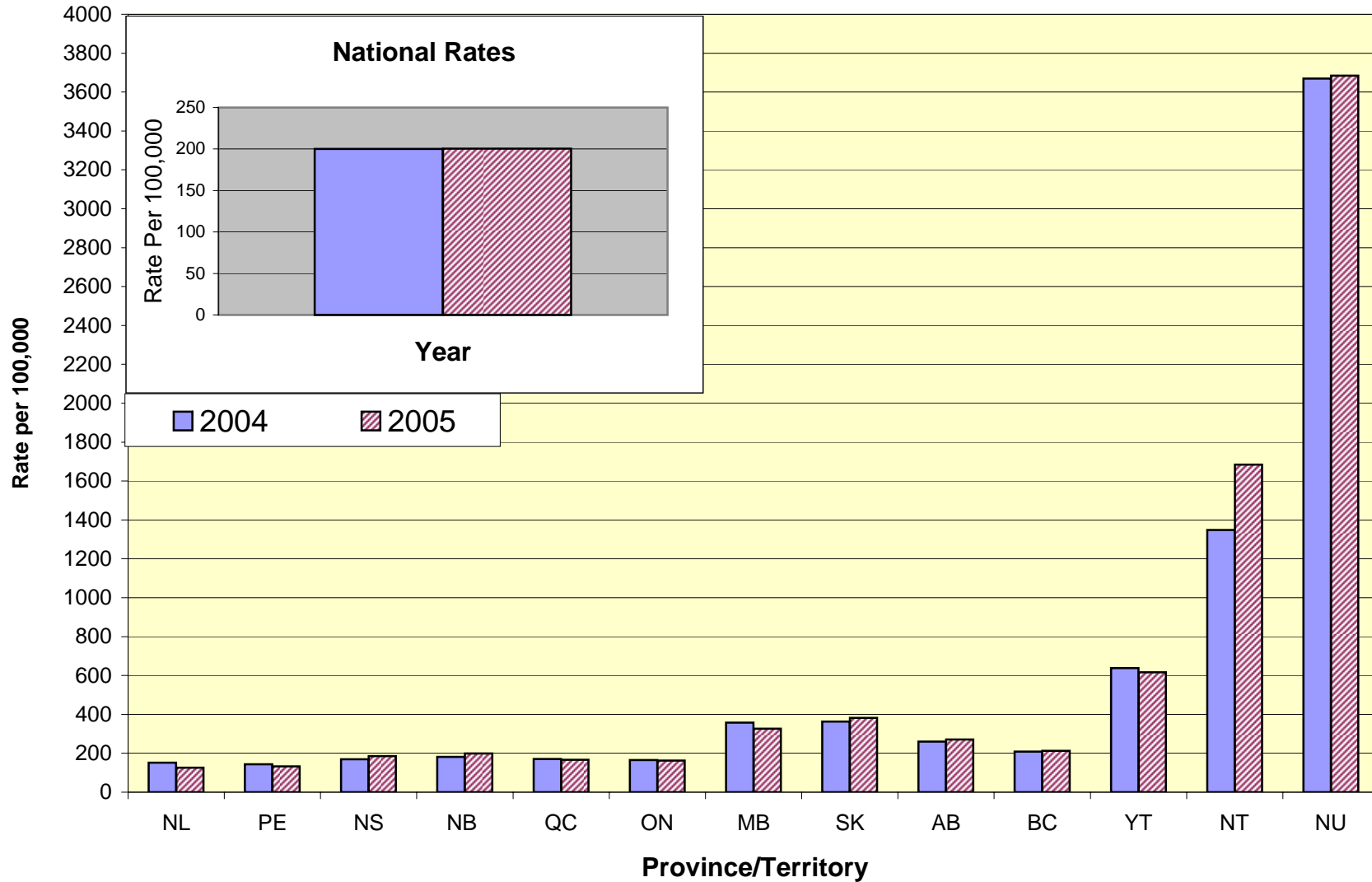
Reported cases of genital chlamydia in 2004 and 2005



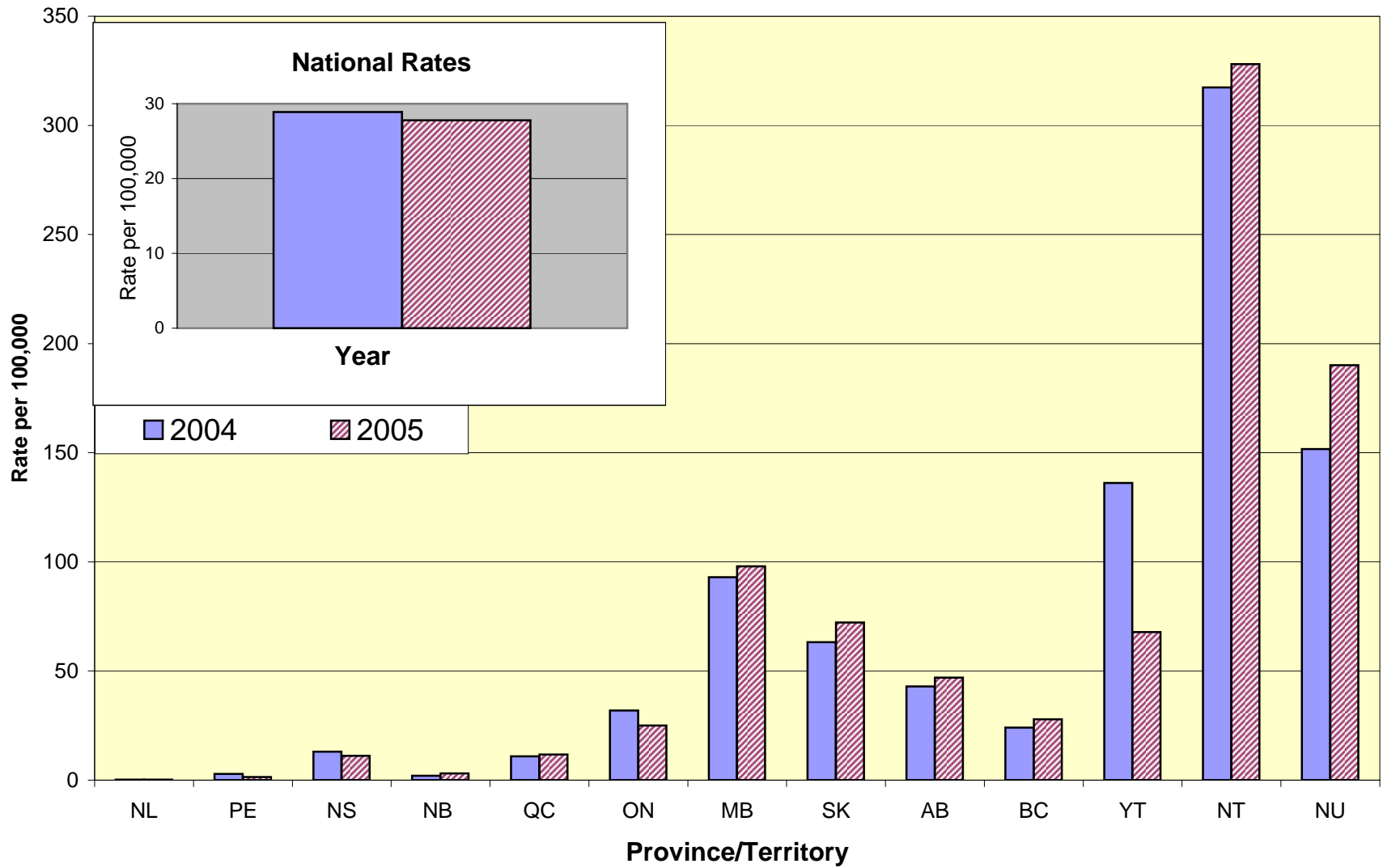
Reported cases of gonorrhoea in 2004 and 2005



Reported rates of genital chlamydia in 2004 and 2005



Reported rates of gonorrhoea in 2004 and 2005



Reported¹ cases and rates of notifiable STI² from January 1 to December 31, 2005 and January 1 to December 31, 2004

Surveillance and Epidemiology Section,
Community Acquired Infections Division,
Centre for Infectious Disease Prevention and Control,
Public Health Agency of Canada, 2006

Province / Territory	Genital Chlamydia			
	Year to Date Cases		2004 Rate ³	2005 Rate ⁴
	2004	2005		
Canada	63975	64672	200.1	200.4
NL	784	650	151.6	126.0
PE	198	184	143.6	133.2
NS	1592	1745	169.8	186.1
NB	1361	1498	181.0	199.2
QC	12843	12655	170.2	166.6
ON ⁵	20442	20399	164.8	162.7
MB	4193	3839	358.3	326.0
SK	3609	3795	363.0	381.7
AB	8338	8832	260.2	271.2
BC	8751	9055	208.3	212.8
YT	197	191	638.4	616.4
NT	578	724	1348.9	1684.4
NU	1089	1105	3670.0	3684.3

Province / Territory	Gonorrhoea			
	Year to Date Cases		2004 Rate ³	2005 Rate ⁴
	2004	2005		
Canada	9248	8975	28.9	27.8
NL	1	1	0.2	0.2
PE	4	2	2.9	1.4
NS	122	104	13.0	11.1
NB	15	23	2.0	3.1
QC	821	900	10.9	11.8
ON ⁵	3957	3138	31.9	25.0
MB	1088	1154	93.0	98.0
SK	628	718	63.2	72.2
AB	1376	1530	42.9	47.0
BC	1013	1186	24.1	27.9
YT	42	21	136.1	67.8
NT	136	141	317.4	328.0
NU	45	57	151.7	190.1

Province / Territory	Infectious Syphilis ⁶			
	Year to Date Cases		2004 Rate ³	2005 Rate ⁴
	2004	2005		
Canada	1102	1057	3.4	3.2
NL	0	2	0.0	0.4
PE	0	0	0.0	0.0
NS	13	2	1.4	0.2
NB	4	1	0.5	0.1
QC	234	252	3.1	3.3
ON ⁵	445	335	3.6	2.7
MB	23	26	2.0	2.2
SK	2	2	0.2	0.2
AB	74	146	2.3	4.5
BC	305	290	7.3	6.8
YT	1	1	3.2	3.2
NT	0	0	0.0	0.0
NU	1	0	3.4	0.0

¹ Data are preliminary and expected to change: 2005 data are expected to change more than 2004 data.

² The term STI (Sexually Transmitted Infection) is now commonly used in place of STD (Sexually Transmitted Disease). STI is more encompassing, including infections that may be asymptomatic.

³ Rate per 100,000 population based on all reported cases for 2004. Population estimates provided by Statistics Canada. (Source: Statistics Canada, Demography Division, Demographic Estimates Section, July Population Estimates, 2004 revised postcensal).

⁴ Rate per 100,000 population based on all reported cases for 2005. Population estimates provided by Statistics Canada. (Source: Statistics Canada, Demography Division, Demographic Estimates Section, July Population Estimates, 2005 preliminary postcensal).

⁵ Reported cases for Ontario in 2005 are underestimates due to transition in the provincial reporting system. Decreases are likely an artifact of reporting delay, not a true reduction in disease incidence. Canadian cases and rates for 2005 are affected.

⁶ Infectious syphilis: primary, secondary and early latent stages.

Note: Small variability may exist between data reported by the provinces/territories and the Public Health Agency of Canada. Provincial/territorial data are definitive should a discrepancy exist.

Source: Surveillance and Epidemiology Section, Community Acquired Infections Division, Centre for Infectious Disease Prevention and Control, Public Health Agency of Canada, 2006.