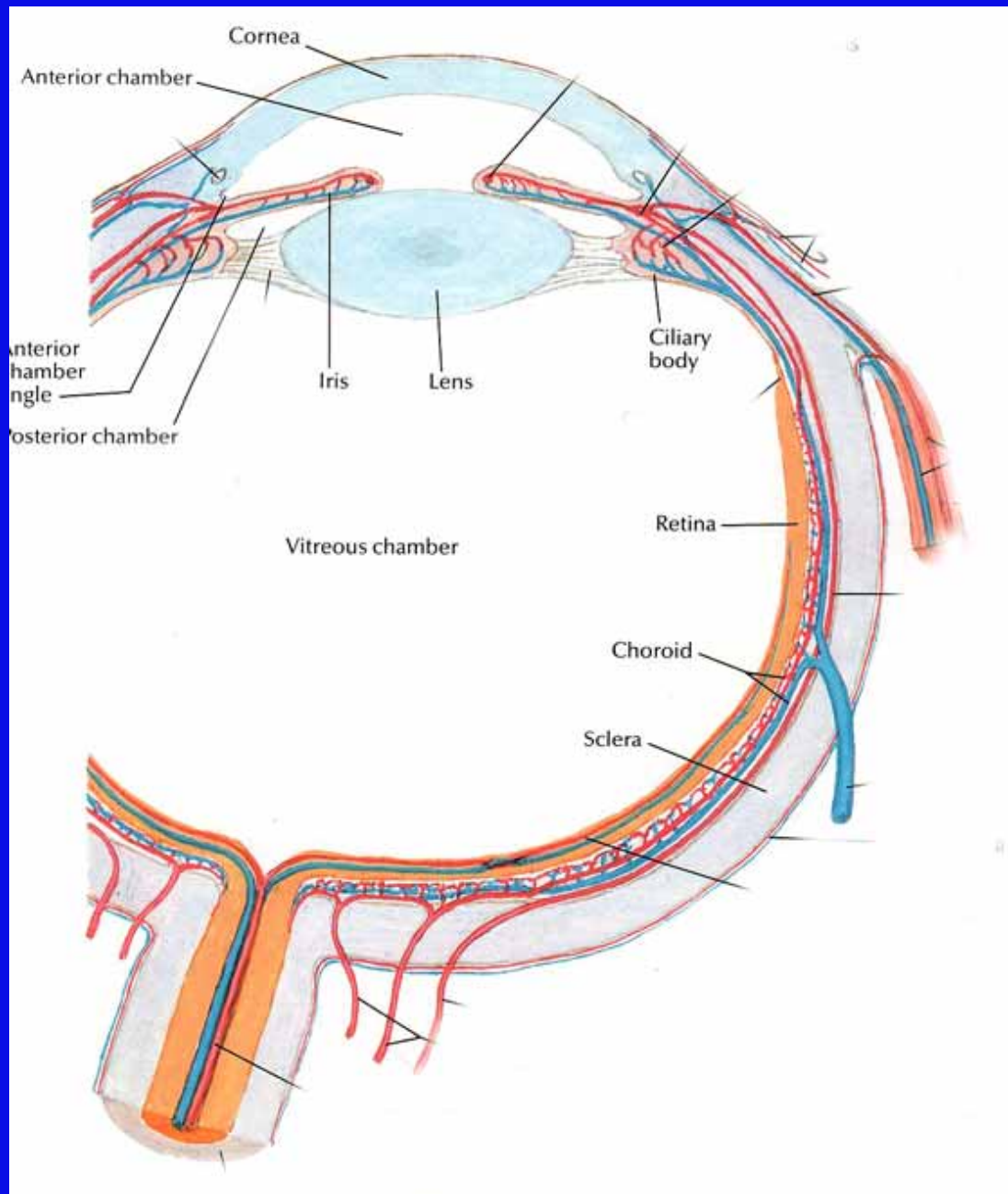


# **Ontario Wait Time Strategy**

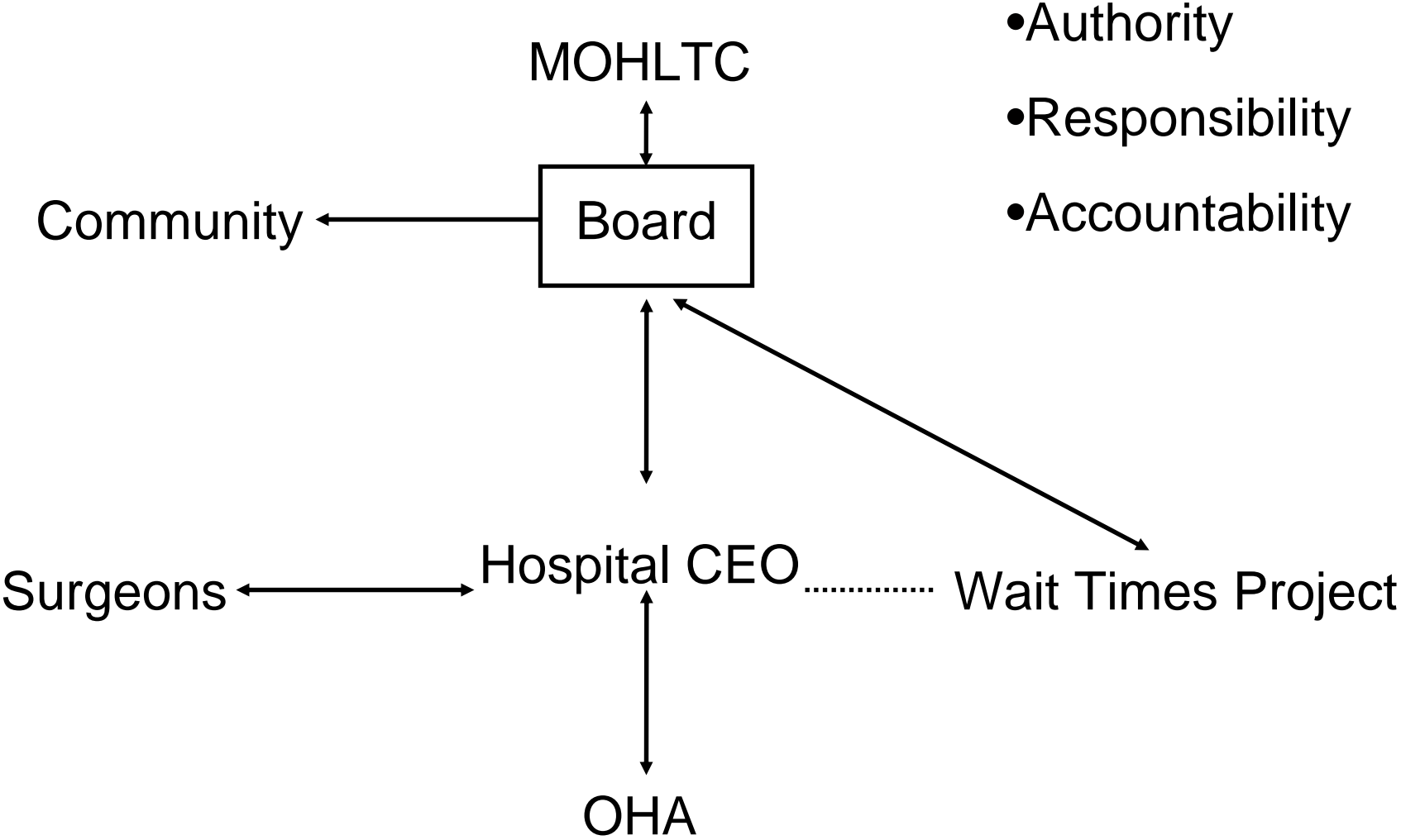
## **Conference on Timely Access to Health Care**

**February 9, 2007**

**Alan R. Hudson, OC, FRCSC**



# Transformation



# Pay for Performance



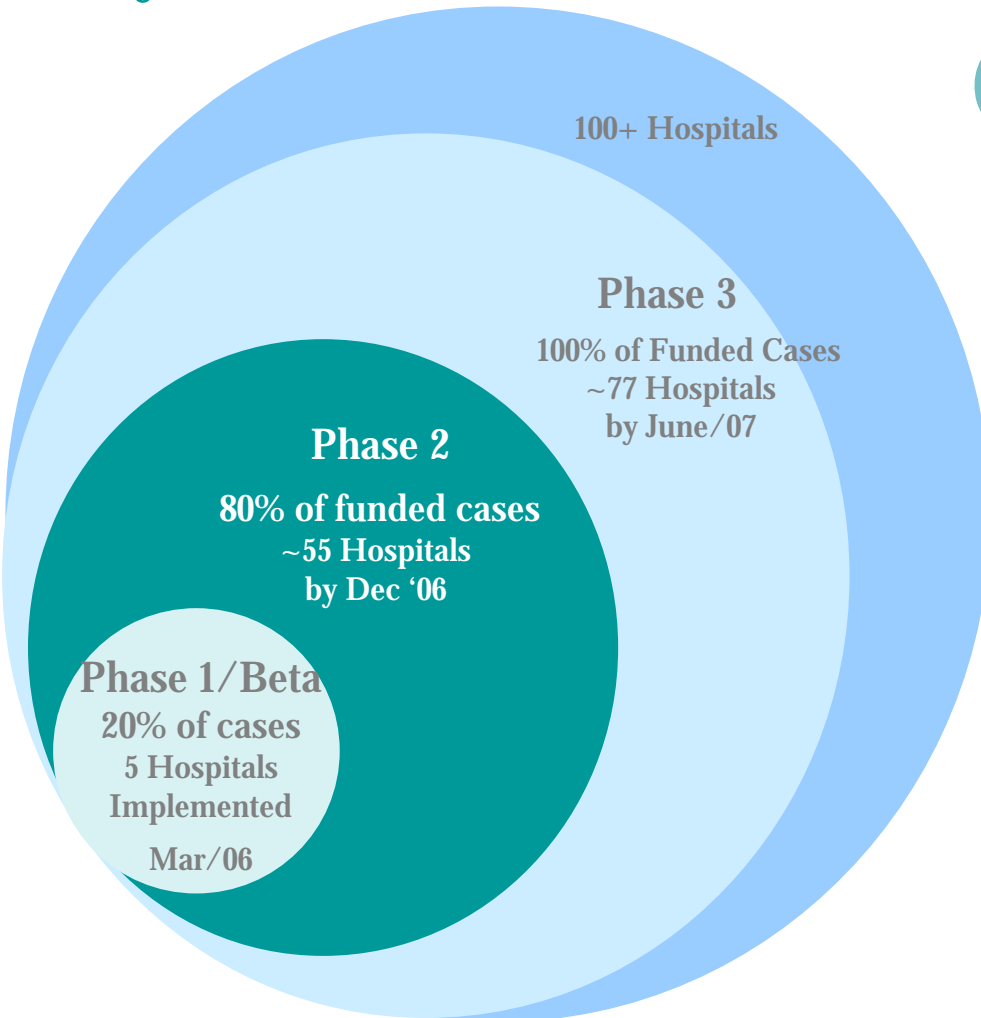
Global Budget

# Implementation

## WTIS-EMPI Phases (5 clinical foci)

### Objectives

### Achievements



### Phase I/Beta: March '06

- 18% of funded cases
- 300 surgeons, 36,000 surgical cases
- 250,000 MRI and CT scans
- 6 EMPI sources, 21 EMPI sites



### Phase II: Dec '06

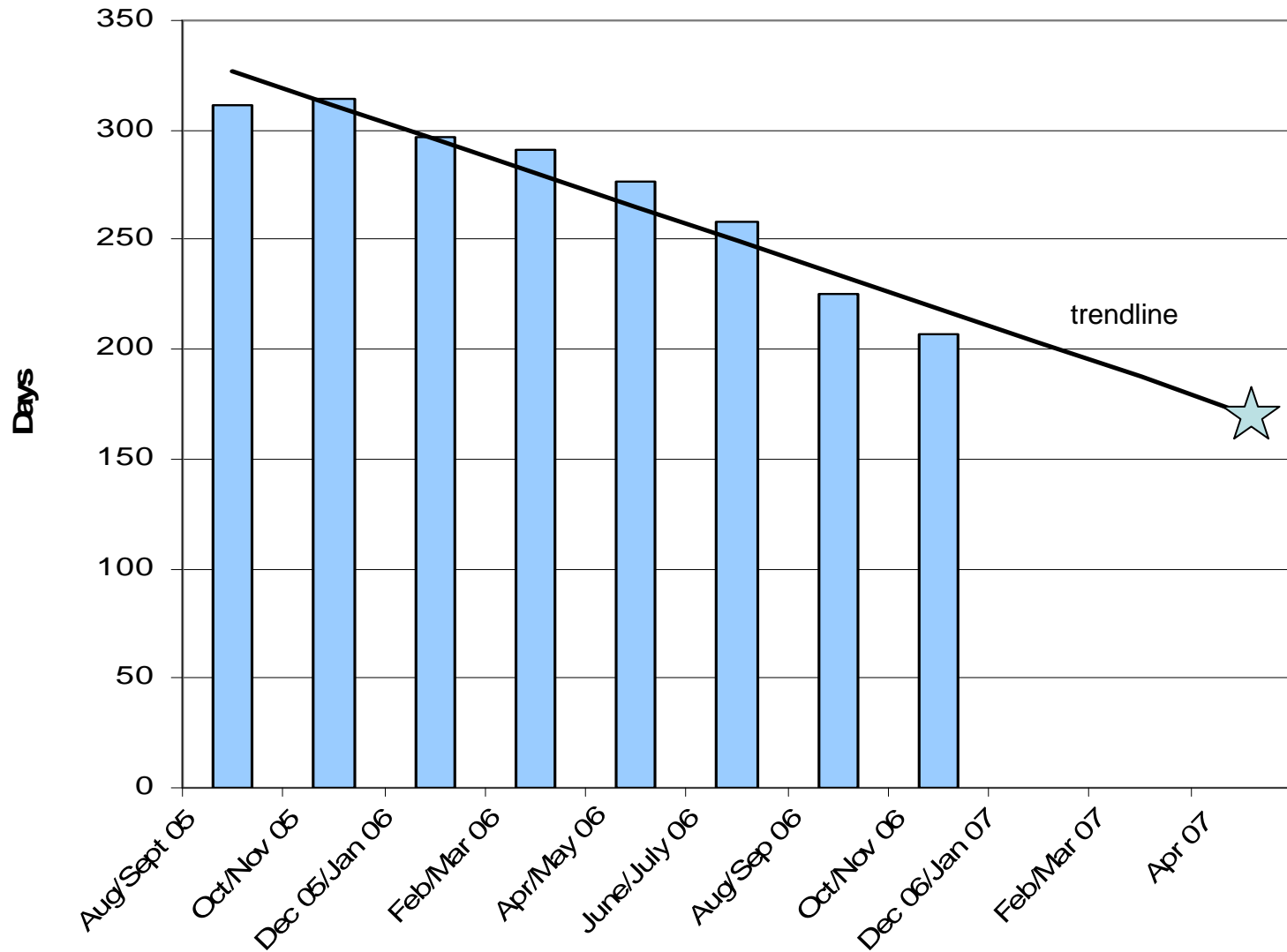
- 90% of funded cases
- 1,400 surgeons, 235,000 surgical cases
- 1.1 million MRI and CT scans
- 48 EMPI sources, 90 EMPI sites

### Phase III: Summer '07

- ~77 hospitals
- 1,700 surgeons, 255,000 surgical cases
- 1.2 million MRI and CT scans

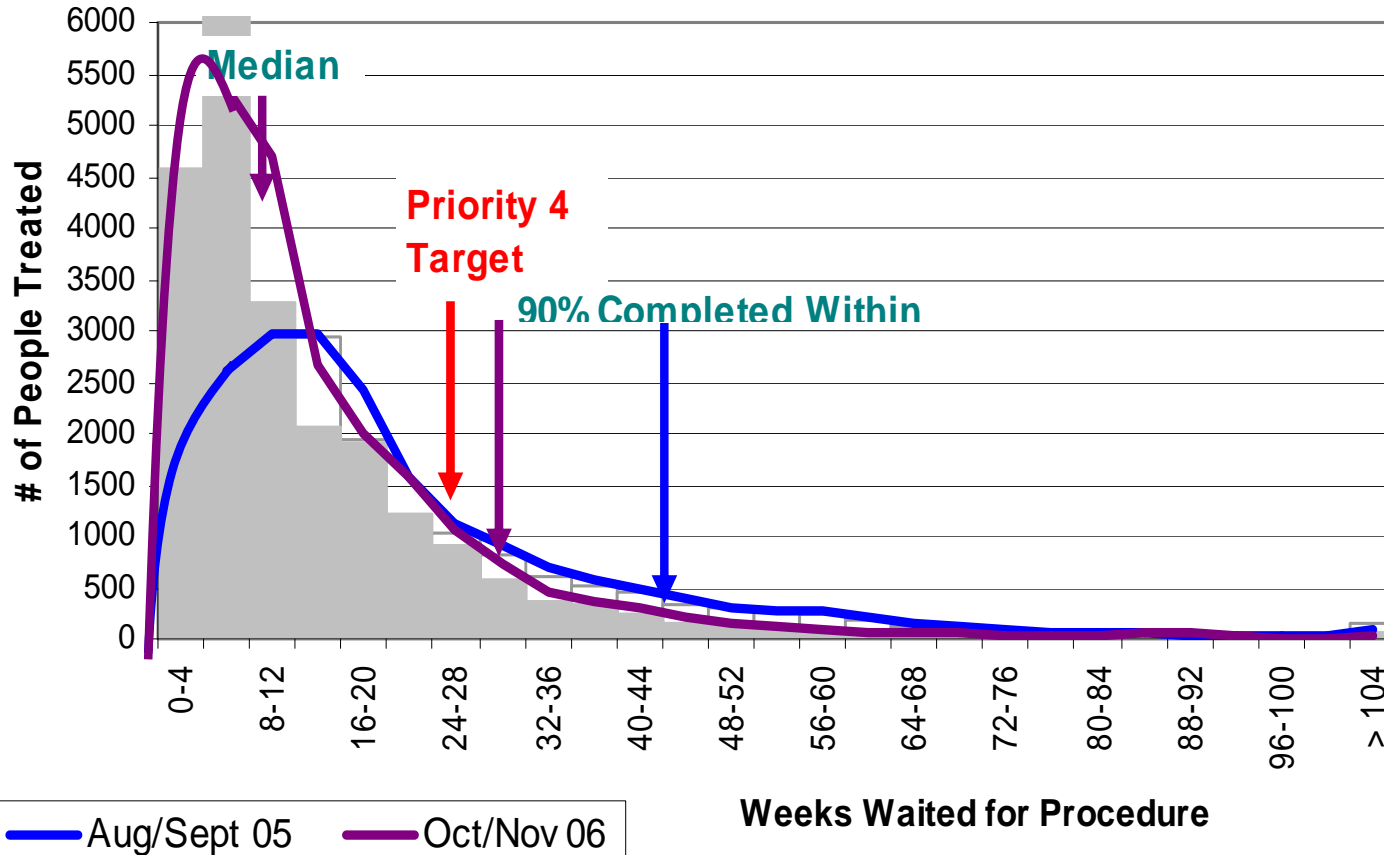


# 90% of Cataract Surgeries Completed Within



# Cataract Surgery Wait Times

## Cataract Surgery Wait Times Aug/Sept 2005 vs. Oct/Nov 2006



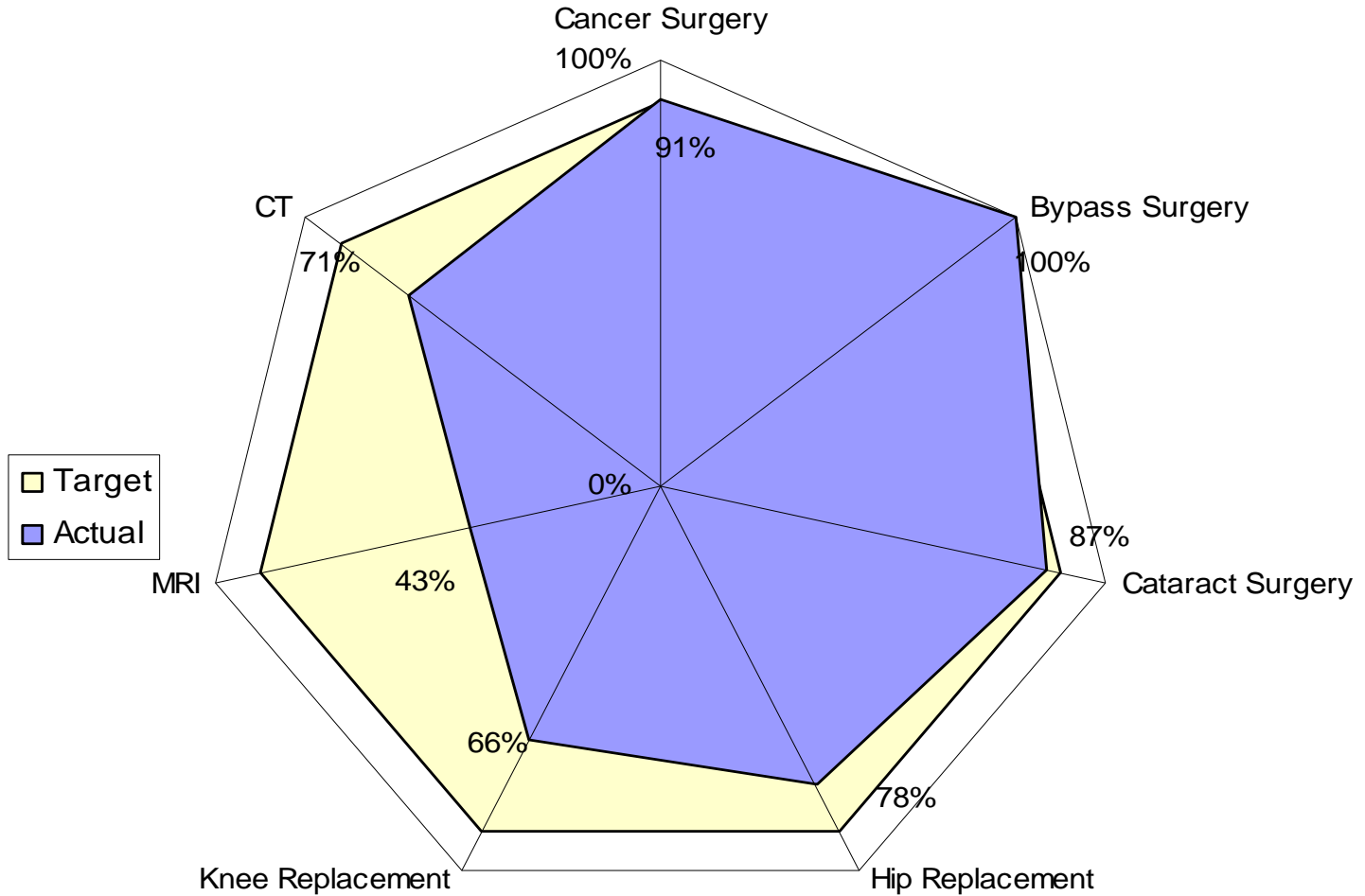


# System Creation

- Kensington

# Current State (Oct/Nov 2006 data)

## % cases completed within target



Note: Priority 4 targets used in absence of priority-level data.

Source: Interim wait times database, Wait Times Information Office

# Progress to Date

## Provincial Trend 90th Percentile Analysis - Oct/Nov '06 Wait Times Data

Service	...90% Completed Within...						
	Baseline (Aug/ Sept '05)	Current (Oct/ Nov '06)		Access Target** (Days)	% Completed Within Target**	Current vs. Baseline	
						Net change	% change
Cancer surgery	81 days	78 days		84	91% ✓	-3	-3.7
Angiography	56	26		-	-	-30	-53.6
Angioplasty	28	20		-	-	-8	-28.6
Bypass surgery	49	47		182	100% ✓	-2	-4.1
Cataract surgery	311	209		182	87%	-102	-32.8
Hip replacement	351	278		182	78%	-73	-20.8
Knee replacement	440	357		182	66%	-83	-18.9
MRI	120	113		28	43%	-7	-5.8
CT	81	70		28	71%	-11	-13.6

\*\*Priority Level 4 Target

# Toronto Central LHIN Progress to Date

## Toronto Central LHIN Wait Time Trend Analysis - Oct/Nov '06 Data

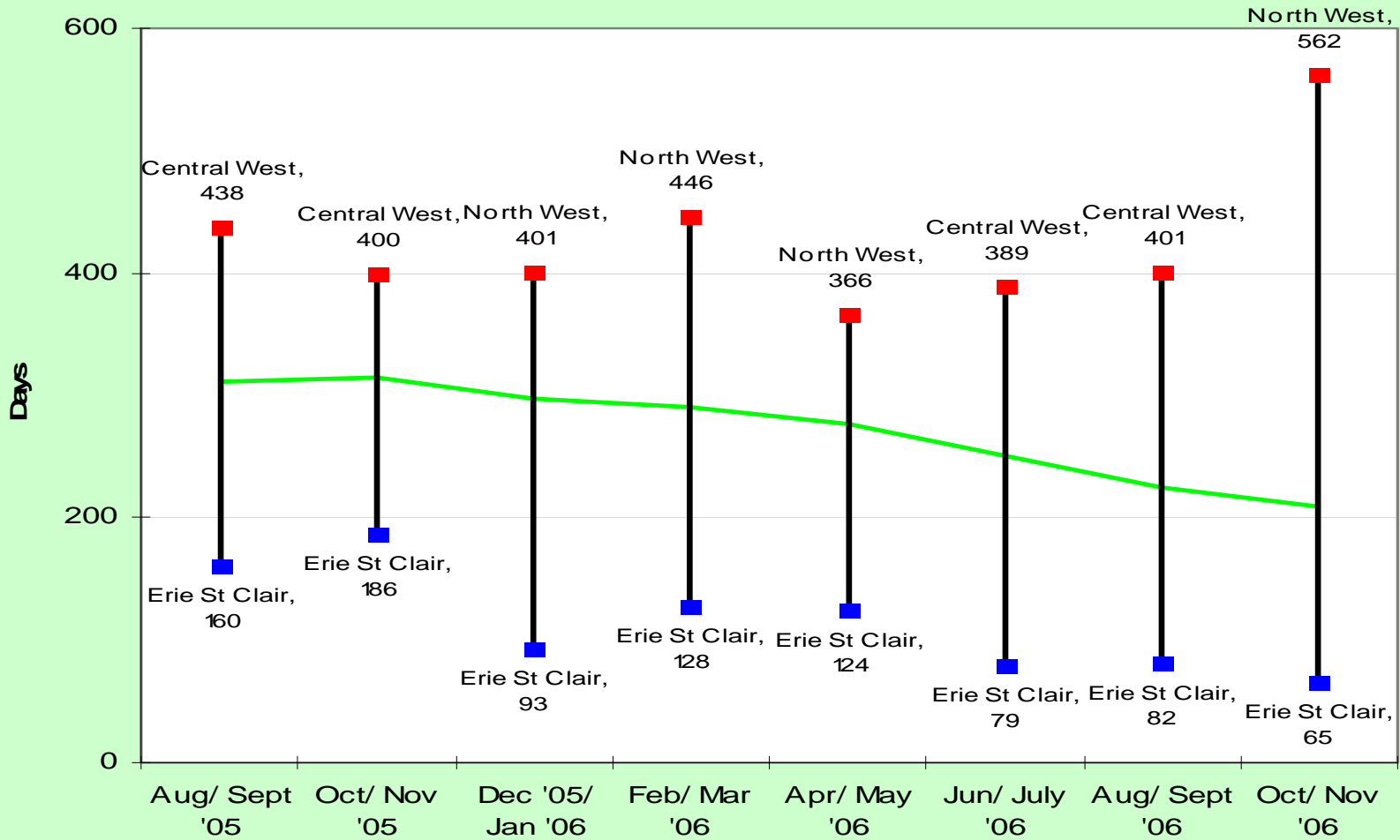
Service	...90% Completed Within...						
	Baseline (Aug/ Sept '05)	Current (Oct/ Nov '06)	LHIN Rank*	Access Target** (Days)	% Completed Within Target**	Current vs. Baseline	
						Net change	% change
Cancer surgery	85 days	69 days	6	84	93% ✓	-16 days	-18.8
Angiography	33	26	8	-	NA	-7	-21.2
Angioplasty	22	19	8	-	NA	-3	-13.6
Bypass surgery	48	42	3	182	100% ✓	-6	-12.5
Cataract surgery	400	188	7	182	90% ✓	-212	-53.0
Hip replacement	343	201	4	182	88%	-142	-41.4
Knee replacement	481	265	3	182	78%	-216	-44.9
MRI	85	127	10	28	49%	42	49.4
CT	88	75	9	28	75%	-13	-14.8

\*\*Priority 4 Access Target

# Case in Point: Cataract Surgery

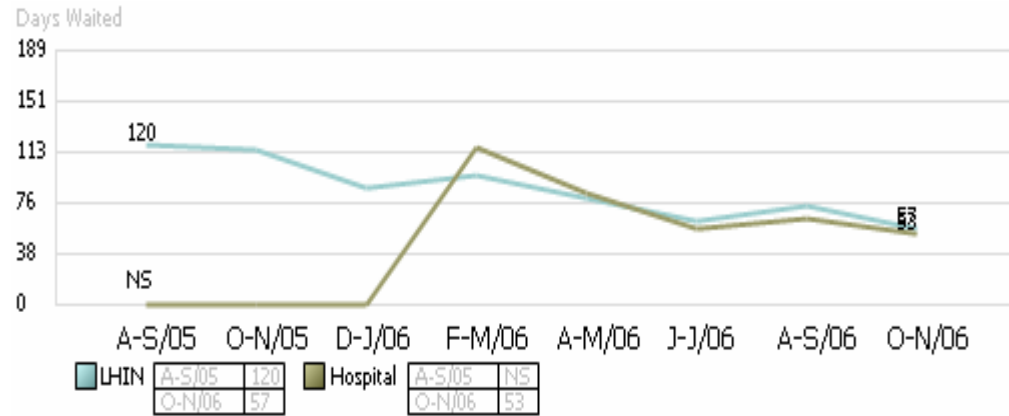
Toronto Central			
Oct - Nov 06			
Hospital Name	Wait times (days)	Median Wait Time (days)	Priority Access Target (days)
<b>Provincial</b>	<b>209</b>	<b>60</b>	<b>182</b>
<b>Toronto Central LHIN</b>	<b>188</b>	<b>57</b>	
The Toronto East General Hospital (Toronto)	<b>120</b>	<b>52</b>	
Hospital for Sick Children (Toronto)	<b>124</b>	<b>29</b>	
University Health Network (Toronto)	<b>126</b>	<b>61</b>	
Mount Sinai Hospital (Toronto)	<b>134</b>	<b>52</b>	
The Kensington Eye Institute (Toronto)	<b>188</b>	<b>53</b>	
St. Joseph's Health Centre (Toronto)	<b>254</b>	<b>81</b>	
St. Michael's Hospital (Toronto)	<b>272</b>	<b>69</b>	
Sunnybrook Health Sciences Centre (Toronto)	<b>323</b>	<b>73</b>	

## Variation in 90th percentile wait times for cataract surgery by LHIN



# The Kensington Eye Institute

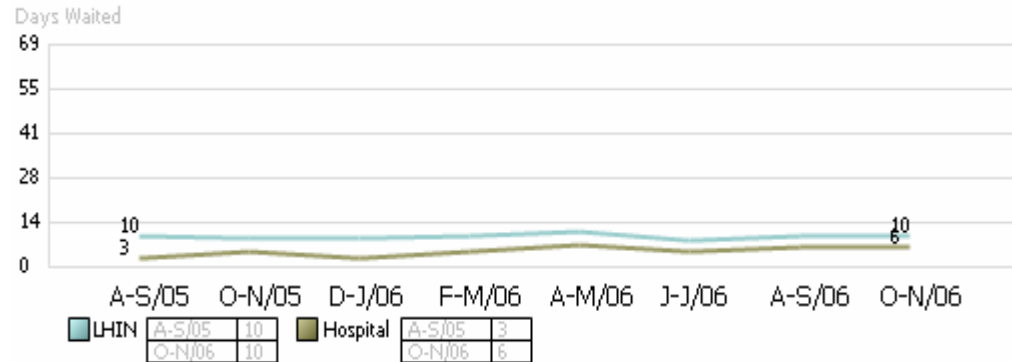
## Cataract Surgery



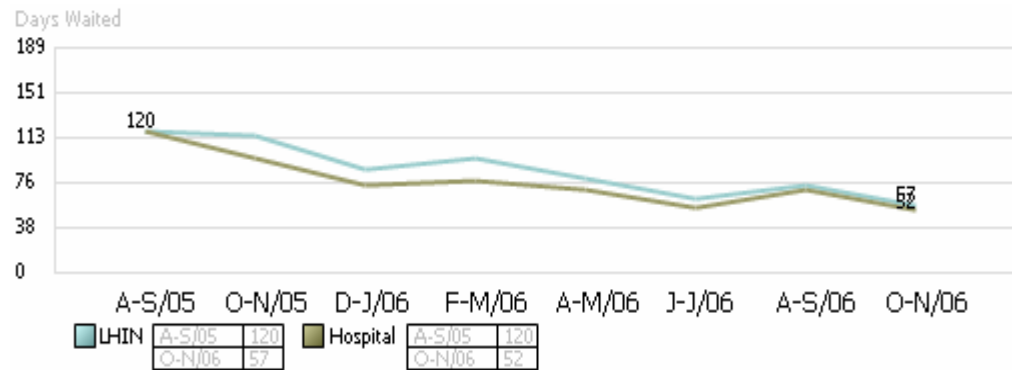
\* Median wait times

# Toronto East General Hospital

## Angiography



## Cataract Surgery



\* Median wait times



# Sustainability

Top 10, in no particular order

1. Accountability
2. Transparency
3. System Change
4. W.T.I.S.
5. Funding
6. Non-M.D. Health Care Providers
7. Expansion of Program
8. Expert Panels/Coaching Teams
9. Quality and Safety (Results)
10. Physician Behaviour Change



Prevention/Screening

[www.ontariowaittimes.com](http://www.ontariowaittimes.com)