

# Pilot Decision Making

## - Module 4 - Human Error

# Outline

- Error Classification
- Latent Conditions
- Countermeasures

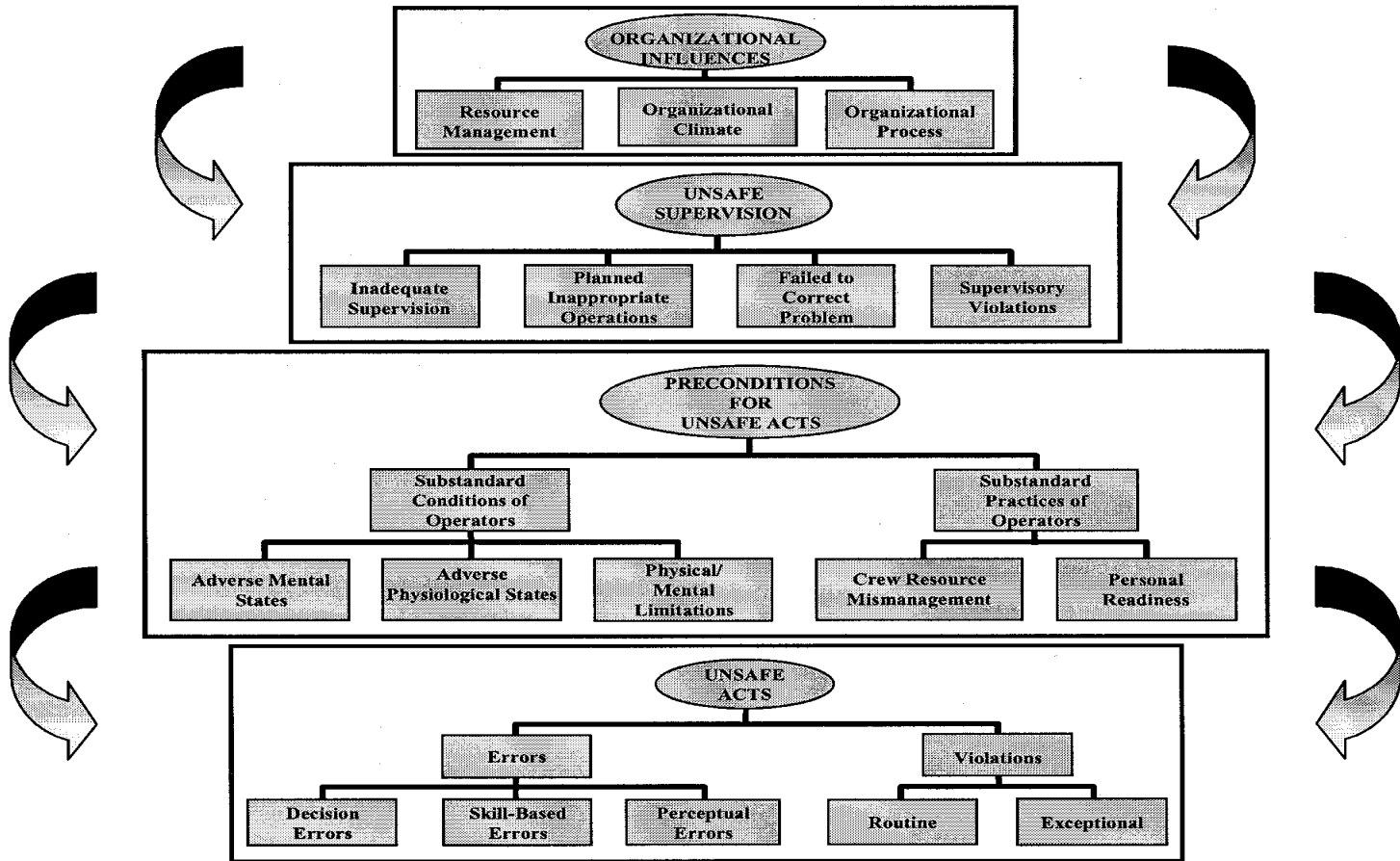
# Error Classification

- Unsafe acts can be classified as:
  - Errors
    - Decision errors
    - Skills-based errors
    - Perceptual errors
  - Violations
    - Routine
    - Exceptional

# Latent Conditions

- According to the Shappell/Wiegmann HFACS Model, the unsafe acts of aircrew are shaped by:
  - Preconditions for unsafe acts
  - Unsafe supervision
  - Organizational influences

# HFACS



# Countermeasures

- Good practices to overcome some effects:
  - Comfort
  - Checklist design
  - Interruption management
  - Inspection and checking design
  - Spoken protocols
  - Human-machine interface
  - Team composition
  - Instruction structure
  - Etc.