

# CST Web Service Project

Enter a term or URL:

Select a search method:

Alphabetical Search

Display As:

Term List

Number of Terms to Display:

30

## Government of Canada CST Web Service Project

[AA Arts, Music, Literature](#)  
[AG Agriculture](#)  
[EC Economics and Industry](#)  
[ET Education and Training](#)  
[EM Farm Descriptions](#)  
[GV Government and Politics](#)  
[HE Health and Safety](#)  
[HI History and Archiving](#)  
[IC Information and Communications](#)  
[LB Labour](#)  
[LN Language and Linguistics](#)  
[LW Law](#)  
[MR Military](#)  
[NE Nature and Environment](#)  
[PE Persons](#)  
[PR Processes](#)  
[SO Society and Culture](#)  
[ST Science and Technology](#)  
[TB Transport](#)

## Government of Canada Core Subject Thesaurus (CST)

- Available online at: <http://thesaurus.gc.ca/>
- Authorized source of standardized terminology for the indexing and retrieval of GoC online information resources.
- TBITS 39.2  
[http://www.cio-dpi.gc.ca/its-nit/standards/tbits39/crit392\\_e.asp](http://www.cio-dpi.gc.ca/its-nit/standards/tbits39/crit392_e.asp)
- “Default” vocabulary for populating “dc.subject” in GOL Metadata Scheme (Dublin Core)

## Background

- Based on the Depository Services Program (DSP) Subject Thesaurus.
- Compliant with ISO standards ISO 2788-1986 and ISO 5964-1985
- Does not include specialized terminology used in specific and limited disciplines.
- DSP has custodial and editorial authority for the CST
- Further development based on
  - extraction of terminology used to identify departmental business lines and mission statements
  - requests submitted by persons responsible for departmental GOL metadata

## Governance

- Thesaurus Sub-Group of the GOL Metadata Working Group
- Main Task:

**“To explore the feasibility, requirements, options, value and value-added, process and method for implementing a government wide thesaurus/thesauri to support GOL requirements for improved information exchange, retrieval, and management of Government of Canada information.”**

## Reasons for Web service

- CST is continually evolving.
- Web service enables dynamic, machine to machine communication
- Result = Current version is always available to indexers and searchers.

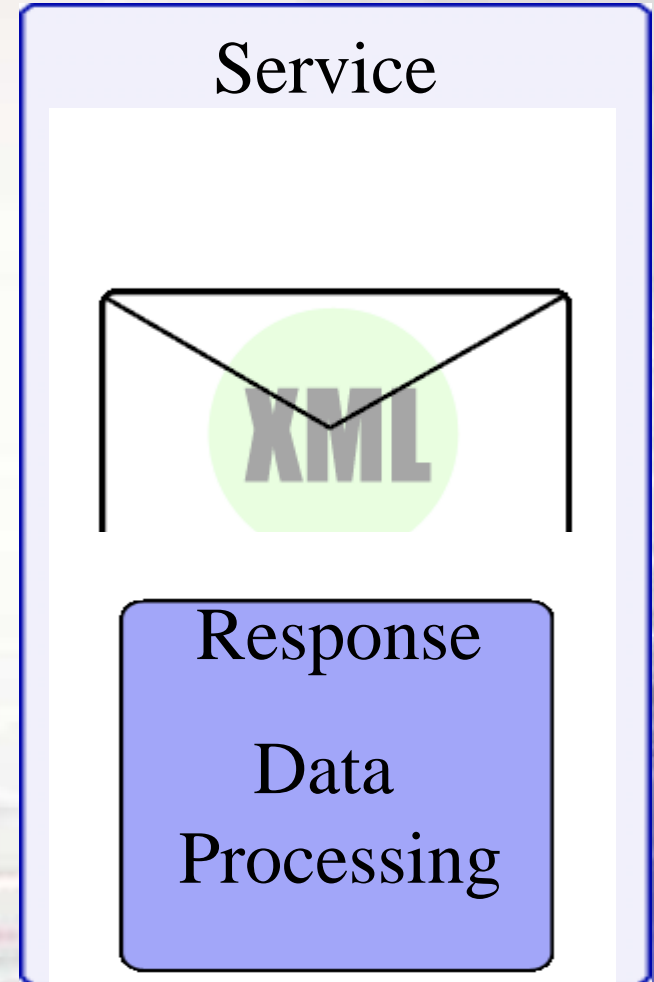
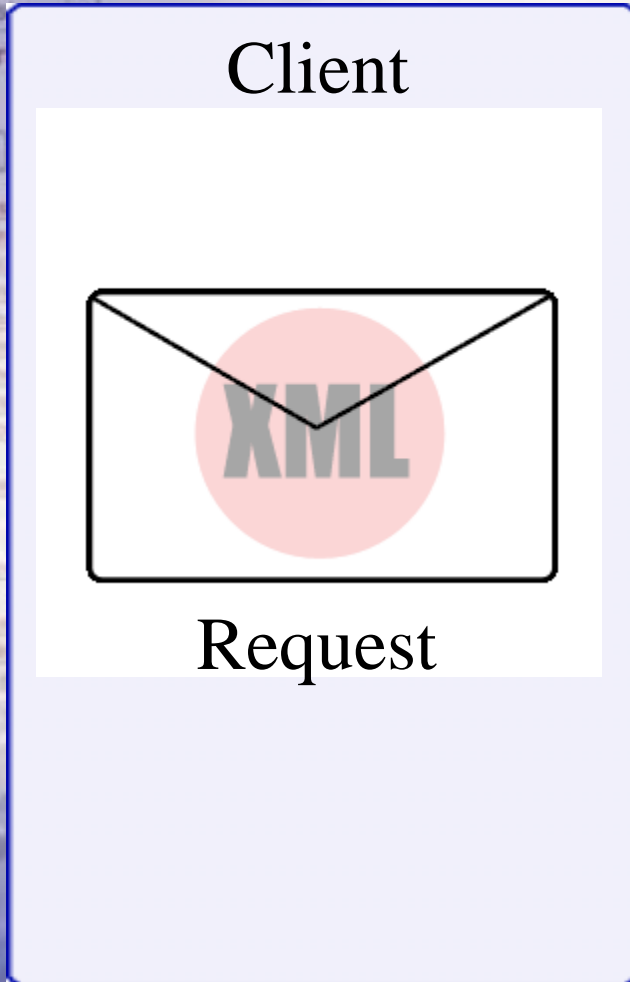
## DSP – EC – LAC Partnership

- Consulting services contracted by LAC
- Paid for by the DSP under an existing service contract with LAC
- EC agreed to be technical leads, provide testing environment and technical support

## What is a web service?

- A standardized way for machines to exchange data
- Allows many applications to use the same data source in different ways
- Based on requests and responses
- Communication uses eXtensible Markup Language (XML)
- XML data encoded using Simple Object Access Protocol (SOAP)
- Public interfaces of the service described using Web Service Description Language (WSDL)

## What is a web service?





## The CST Web Service

- Another interface for accessing terms from the CST
- The existing website is a good way for users to find and use CST terms (i.e. search, copy and paste) but the process depends on the user
- The web service allows developers to dynamically use CST terms in their applications while minimizing user dependence and the margin for error

## The CST Web Service

- Provides three methods for accessing information:
  - Alphabetical Search
  - String Search
  - Classified Search

## CST Web Service Methods

- **Alphabetical and String Searches**
  - Both take four parameters
    - Language
    - Search String
    - Response Type
    - Number of Terms
  - Alphabetical matches text from the beginning
  - String matches the text anywhere in a term

## CST Web Service Methods

- **Alphabetical and String Searches (cont.)**
  - Three response types
    - Term List
      - List of terms with minimal information
    - Term Records
      - List of terms with detailed information for each match
    - Term Hierarchy
      - List of terms with attention to where each term fits into the hierarchy of terms

## CST Web Service Methods

- **Classified Search (Browsing)**

- Two parameters

- Language
- Category Code

- If the category code is empty a list of categories is returned

- If the category code is present then a list of terms for that category is returned

## CST Web Service Client

- Developed to demonstrate the service
- Fulfills Environment Canada's immediate needs for the service
- Designed as a reusable component that can be easily integrated into existing web applications
- Goal is to facilitate using the CST to fill in a form on a web page

## CST Web Service Client

- No knowledge of XML or web services
- Requires a container to forward requests to the client and include a response into itself
- Requires some JavaScript to process information from the client and use it to change the form
- Returns preferred terms where applicable

# CST Web Service Project

## CST Web Service Project - Agenda -

- How it works
- Testing & performance
- Application
  - Client interface
  - Web service
- Governance Questions
- Next Steps
- Advantages

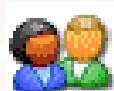


# CST Web Service Project

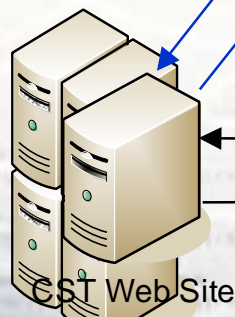
## CST Web Service Project - How it works -



- Users connect to local content management system or application
- Dynamically browse / search using standard client interface
- Pick and choose .....



- Users connect thru web
- Browse CST
- Cut and paste data



CST Web Site  
- Magma -  
CST Web Service  
- Environment Canada -

## CST Web Service Project - Testing & Performance -

### Load testing Parameters

- What should be load testing parameters ?
  - Number of concurrent users ?
- Based on what architecture ?
  - Central vs decentralised ?
- Based on who's infrastructure ?

### Current Performance issues

- Slow
  - Multi tier, Network
  - Magma server
    - o Obsolete Db software – not robust

# CST Web Service Project

Enter a term or id:

Select a search method:

Alphabetical Search ▾

Display As:

Term List ▾

Number of Terms to Display:

30

Submit Reset Browse Categories

## Client interface

- How many should exist ?
- Who can access ?
- Documentation
- Local vs central User support

Environment Canada  
Charles.St-Pierre@ec.gc.ca

23-09-2004

# CST Web Service Project

## CST Web Service Project - Application -

### CST Web Service

- Where should it sit ?
- How critical is it?
- Who can access ?
  - Federal government
  - Provincial government
- Documentation
- Local vs central support

## CST Web Service Project - Governance Questions -

- Longer term resource, funding, etc
- Security concerns, user permissions etc
- Use of the Web service by organisations external to GOC particularly provincial governments (exclusion of private sector organisations assumed)
- Where should the Web Service sit?
- Longer term server hosting for the Web Service that would support use by organisations external to EC

## Project Service Web (CST) - Advantages -

- Facilitates access to all users
- Standardize:
  - CMS and application connectivity
  - GOC Single client interface
  - Content selection and formatting
- Programmatically support policies
  - (CLF, OLA, ...)
- Minimal user training
- In line with Service Oriented Architecture (SOA) approach
- Very cost effective

# CST Web Service Project

## CST Web Service Project - Next Steps -

- Who Stakeholders
  - Users
  - Technical support
  - Governors
  - Funding org
- What
  - Additional new technology
- When
  - Now
  - Soon
  - Later
- Where

# CST Web Service Project

Enter a term or a URL

Select a search method:

Alphabetical Search

Display As:

Term List

Number of Terms to Display:

30

- Questions -

- AA Arts, Music, Literature
- AG Agriculture
- EC Economics and Industry
- ET Education and Training
- EM Farm Descriptors
- GV Government and Politics
- HE Health and Safety
- HI History and Archaeology
- BI Information and Communications
- LB Labour
- LN Language and Linguistics
- LW Law
- MR Military
- NE Nature and Environment
- PE Persons
- PR Processes
- SO Society and Culture
- ST Science and Technology
- TR Transport

Environment Canada  
Charles.St-Pierre@ec.gc.ca

23-09-2004

IM Day 2004