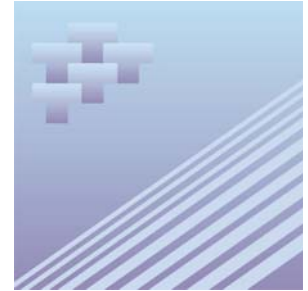




Catalogue no. 51-007-XIE

Aircraft Movement Statistics: NAV CANADA Towers and Flight Service Stations



February 2007



Statistics
Canada

Statistique
Canada

Canada

How to obtain more information

Specific inquiries about this product and related statistics or services should be directed to: Transportation Division, Statistics Canada, Ottawa, Ontario, K1A 0T6 (telephone: 1-866-500-8400).

For information on the wide range of data available from Statistics Canada, you can contact us by calling one of our toll free numbers. You can also contact us by e-mail or by visiting our website at www.statcan.ca.

National inquiries line **1-800-263-1136**

National telecommunications device for the hearing impaired **1-800-363-7629**

Depository Services Program inquiries **1-800-700-1033**

Fax line for Depository Services Program **1-800-889-9734**

E-mail inquiries infostats@statcan.ca

Website www.statcan.ca

Information to access the product

This product, catalogue no. 51-007-XIE, is available for free in electronic format. To obtain a single issue, visit our website at www.statcan.ca and select Publications.

Standards of service to the public

Statistics Canada is committed to serving its clients in a prompt, reliable, courteous, and fair manner. To this end, the Agency has developed standards of service that its employees observe in serving its clients. To obtain a copy of these service standards, please contact Statistics Canada toll free at 1-800-263-1136. The service standards are also published on www.statcan.ca under About us > Providing services to Canadians.



Statistics Canada
Transportation Division

Aircraft Movement Statistics: NAV CANADA Towers and Flight Service Stations

February 2007

Published by authority of the Minister responsible for Statistics Canada

© Minister of Industry, 2007

Published by authority of the Minister responsible for Statistics Canada and the Minister of Transport. © Minister of Industry and Minister of Transport, 2006. All rights reserved. The content of this electronic publication may be reproduced, in whole or in part, and by any means, without further permission from Statistics Canada, subject to the following conditions: that it is done solely for the purposes of private study, research, criticism, review, newspaper summary, and/or for non-commercial purposes; and that Statistics Canada be fully acknowledged as follows: Source (or "Adapted from," if appropriate): Statistics Canada, name of product, catalogue, volume and issue numbers, reference period and page(s). Otherwise, no part of this publication may be reproduced, stored in a retrieval system or transmitted in any form or by any means, electronic, mechanical, photocopy, for any purposes, without the prior written permission of Licensing Services, Client Services Division, Statistics Canada, Ottawa, Ontario, Canada K1A 0T6.

April 2007

Catalogue no. 51-007-XIE, Vol. 1, No. 2

ISSN 1911-6314

Frequency: Monthly

Ottawa

La version française de cette publication est disponible sur demande (n° 51-007-XIF au catalogue).

Note of appreciation

Canada owes the success of its statistical system to a long standing partnership between Statistics Canada, the citizens of Canada, its businesses, governments and other institutions. Accurate and timely statistical information could not be produced without their continued cooperation and goodwill.

User information

Symbols

The following standard symbols are used in Statistics Canada publications:

- . not available for any reference period
- .. not available for a specific reference period
- ... not applicable
- 0 true zero or a value rounded to zero
- 0^s value rounded to 0 (zero) where there is a meaningful distinction between true zero and the value that was rounded
- p preliminary
- r revised
- x suppressed to meet the confidentiality requirements of the *Statistics Act*
- E use with caution
- F too unreliable to be published

Acknowledgements

This publication was prepared by the Aviation Statistics Centre, of the Transportation Division, Statistics Canada under the general direction of **Gord Baldwin**, Director, Transportation Division. **Kathie Davidson**, **Maureen de Souza**, **Marc Trudel**, **John Scolli** and **Sylvie Savard** contributed to the preparation of this publication.

Table of contents

| | |
|--|----------|
| Highlights | 5 |
| Analysis | 6 |
| Related products | 7 |
| Statistical tables | |
| 1 Total aircraft movements by class of operation | 10 |
| 1-1 NAV CANADA towers | 10 |
| 1-2 NAV CANADA flight service stations | 11 |
| 2 Total aircraft movements, civil and military | 12 |
| 2-1 NAV CANADA towers | 12 |
| 2-2 NAV CANADA flight service stations | 13 |
| 3 Itinerant movements by type of operator | 14 |
| 3-1 NAV CANADA towers | 14 |
| 3-2 NAV CANADA flight service stations | 15 |
| 4 Itinerant movements by I.F.R. (Instrument flight rules) and V.F.R. (Visual flight rules) and runway 88 movements | 16 |
| 4-1 NAV CANADA towers | 16 |
| 4-2 NAV CANADA flight service stations | 17 |
| 5 Itinerant movements by type of power plant | 18 |
| 5-1 NAV CANADA towers | 18 |
| 5-2 NAV CANADA flight service stations | 19 |
| 6 Itinerant movements by aircraft weight group | 20 |
| 6-1 NAV CANADA towers | 20 |
| 6-2 NAV CANADA flight service stations | 21 |
| 7 Itinerant movements, domestic, transborder and international | 22 |
| 7-1 NAV CANADA towers | 22 |
| 7-2 NAV CANADA flight service stations | 26 |

Table of contents – continued

| | | |
|------|--|----|
| 8 | Total aircraft movements, peak hour and peak day | 31 |
| 8-1 | NAV CANADA towers | 31 |
| 8-2 | NAV CANADA flight service stations | 32 |
| 9 | Itinerant aircraft movements, peak hour and peak day | 33 |
| 9-1 | NAV CANADA towers | 33 |
| 9-2 | NAV CANADA flight service stations | 34 |
| 10 | Local movements, peak hour and peak day | 35 |
| 10-1 | NAV CANADA towers | 35 |
| 10-2 | NAV CANADA flight service stations | 36 |
| 11 | Local movements - civil, peak hour and peak day | 37 |
| 11-1 | NAV CANADA towers | 37 |
| 11-2 | NAV CANADA flight service stations | 38 |
| 12 | Local movements - military, peak hour and peak day | 39 |
| 12-1 | NAV CANADA towers | 39 |
| 12-2 | NAV CANADA flight service stations | 40 |

Data quality, concepts and methodology

| | |
|------------------------------|----|
| Methodology | 41 |
| Data quality and limitations | 43 |

Appendix

| | | |
|---|-------------------|----|
| I | Glossary of terms | 44 |
|---|-------------------|----|

Highlights

- For the ninth consecutive month, aircraft take-offs and landings at Canadian airports with NAV CANADA air traffic control towers and flight service stations increased in year-over-year monthly comparisons. These 96 airports reported 383,520 movements in February 2007 compared with 374,998 movements in February 2006, an increase of 2.3% (+8,522 movements).
- Itinerant movements (flights from one airport to another) increased by 1.1% (+3,043 movements) in February 2007 compared with the same month a year earlier.
- Toronto/Lester B Pearson International was the most active airport for itinerant movements with 31,368 movements, up 2.2% (+675 movements) from February 2006.
- Local movements (flights that remain in the vicinity of the airport) increased by 5.5% (+5,479 movements) in February 2007 compared with February 2006.
- Abbotsford airport was most active for local movements with 9,708 movements, up 41.2 % (+2,832 movements) from February 2006.

Table 1
Distribution of aircraft movements at NAV CANADA Towers and Flight Service Stations

| | NAV CANADA towers | | NAV CANADA Flight Service Stations | | Total | |
|-------------------------------|-------------------|--|------------------------------------|--|----------------|--|
| | number | Change from February 2007/ February 2006 percent | number | Change from February 2007/ February 2006 percent | number | Change from February 2007/ February 2006 percent |
| Grand total | 310,665 | 3.5 | 72,855 | -2.6 | 383,520 | 2.3 |
| Itinerant movements | | | | | | |
| Air carriers | 174,644 | 5.3 | 44,741 | -1.2 | 219,385 | 3.9 |
| Other commercial movements | 23,420 | -8.3 | 3,299 | -14.3 | 26,719 | -9.1 |
| Private movements | 17,825 | -7.6 | 5,166 | -15.7 | 22,991 | -9.6 |
| Government civil movements | 4,062 | -9.7 | 1,577 | -12.6 | 5,639 | -10.5 |
| Government military movements | 2,668 | 13.3 | 974 | 42.6 | 3,642 | 19.9 |
| Itinerant total | 222,619 | 2.3 | 55,757 | -3.5 | 278,376 | 1.1 |
| Local movements | | | | | | |
| Civil local movements | 86,526 | 6.0 | 16,814 | 0.0 | 103,340 | 4.9 |
| Military local movements | 1,520 | 58.8 | 284 | 22.4 | 1,804 | 51.7 |
| Local total | 88,046 | 6.6 | 17,098 | 0.3 | 105,144 | 5.5 |

Analysis

For the ninth consecutive month, aircraft take-offs and landings at Canadian airports with NAV CANADA air traffic control towers and flight service stations increased in year-over-year monthly comparisons. These 96 airports reported 383,520 movements in February 2007 compared with 374,998 movements in February 2006, an increase of 2.3% (+8,522 movements).

Itinerant movements (flights from one airport to another) increased by 1.1% (+3,043 movements) in February 2007 compared with the same month a year earlier.

Local movements (flights that remain in the vicinity of the airport) increased by 5.5% (+5,479 movements) in February 2007 compared with February 2006.

Airports with NAV CANADA air traffic control towers

The 42 Canadian airports with NAV CANADA air traffic control towers reported 310,665 aircraft take-offs and landings in February, up 3.5% compared with February 2006 (300,182 movements). Year-over-year increases in aircraft movements were reported by 26 of the airports in February 2007. The variations ranged from 73.1% at Moncton/Greater Moncton International to -26.6% at Thunder Bay.

Itinerant movements (flights from one airport to another) increased by 2.3% (+5,050 movements) in February compared with the same month a year earlier. Year-over-year variations in itinerant movements ranged from a 62.3% increase (+1,874 movements) at Moncton/Greater Moncton International to a decline of 32.8% (-1,076 movements) at Pitt Meadows, British Columbia.

Local movements (flights that remain in the vicinity of the airport) increased by 6.6% (+5,433 movements) in February compared with February 2006. Year-over-year variations in local movements ranged from a 127.8 % increase (+726 movements) at Regina International to a decline of 100 % (-2 movements) at Vancouver Harbour.

Airports with NAV CANADA flight service stations

The 54 Canadian airports with NAV CANADA flight service stations reported 72,855 aircraft take-offs and landings in February, down 2.6% compared with 56 flight service stations in February 2006 (74,816 movements). Year-over-year increases in aircraft movements were reported by 25 of these airports in February 2007. The variations ranged from 65.0% at Charlottetown to -35.7% at Peace River, Alberta.

Itinerant movements (flights from one airport to another) decreased by 2.3% (-1,339 movements) in February compared with the same month a year earlier. Year-over-year variations in itinerant movements ranged from a 42.3% increase (+284 movements) at Charlottetown to a decline of 38.8% (-205 movements) at Castlegar, British Columbia.

Local movements (flights that remain in the vicinity of the airport) increased by 0.8% (+137 movements) in February compared with February 2006. North Bay showed the largest increase in local movements in February 2007 compared with February 2006, increasing by 970 movements (+63.7%) to reach 2,492 movements.

Related products

Selected CANSIM tables from Statistics Canada

| | |
|----------|---|
| 401-0005 | Aircraft movements by class of operation, airports with NAV CANADA towers, preliminary, monthly |
| 401-0006 | Aircraft movements by class of operation, airports with NAV CANADA towers, preliminary, annual |
| 401-0007 | Aircraft movements, by class of operation and peak hour and peak day of movements, airports with NAV CANADA towers, monthly |
| 401-0008 | Aircraft movements, by civil and military movements, airports with NAV CANADA towers, monthly |
| 401-0009 | Itinerant movements, by type of operation, airports with NAV CANADA towers, monthly |
| 401-0010 | Itinerant movements, by instrument flight rules, visual flight rules and runway 88, airports with NAV CANADA towers, monthly |
| 401-0011 | Itinerant movements, by type of power plant, airports with NAV CANADA towers, monthly |
| 401-0012 | Itinerant movements, by aircraft gross take-off weight, airports with NAV CANADA towers, monthly |
| 401-0013 | Domestic and international itinerant movements, by type of operation, airports with NAV CANADA towers, monthly |
| 401-0014 | Aircraft movements, by class of operation and peak hour and peak day of movements, airports with NAV CANADA flight service stations, monthly |
| 401-0015 | Aircraft movements, by civil and military movements, airports with NAV CANADA flight service stations, monthly |
| 401-0016 | Itinerant movements, by type of operation, airports with NAV CANADA flight service stations, monthly |
| 401-0017 | Itinerant movements, by instrument flight rules, visual flight rules and runway 88, airports with NAV CANADA flight service stations, monthly |
| 401-0018 | Itinerant movements, by type of power plant, airports with NAV CANADA flight service stations, monthly |
| 401-0019 | Itinerant movements, by aircraft gross take-off weight, airports with NAV CANADA flight service stations, monthly |
| 401-0020 | Domestic and international itinerant movements, by type of operation, airports with NAV CANADA flight service stations, monthly |

Selected surveys from Statistics Canada

| | |
|------|------------------------------|
| 2715 | Aircraft Movement Statistics |
|------|------------------------------|

Selected summary tables from Statistics Canada

- *Aircraft movements by class of operation (monthly)*

Statistical tables

Table 1-1
Total aircraft movements by class of operation — NAV CANADA towers

| | Total | | Itinerant | | Local | |
|---|-------------------|---------------------|-------------------|---------------------|-------------------|---------------------|
| | Rank of movements | Number of movements | Rank of movements | Number of movements | Rank of movements | Number of movements |
| Abbotsford | 5 | 15,283 | 10 | 5,575 | 1 | 9,708 |
| Boundary Bay | 6 | 12,036 | 14 | 4,612 | 2 | 7,424 |
| Calgary International | 3 | 18,201 | 3 | 18,095 | 38 | 106 |
| Calgary/Springbank | 11 | 9,457 | 20 | 3,615 | 3 | 5,842 |
| Chicoutimi/St-Honoré | 39 | 2,001 | 39 | 1,071 | 28 | 930 |
| Edmonton City Centre | 18 | 6,211 | 12 | 4,978 | 25 | 1,233 |
| Edmonton International | 10 | 10,389 | 5 | 9,974 | 33 | 415 |
| Edmonton/Villeneuve | 29 | 4,005 | 40 | 929 | 9 | 3,076 |
| Gander International | 35 | 2,769 | 35 | 1,621 | 26 | 1,148 |
| Halifax International | 20 | 6,056 | 11 | 5,512 | 31 | 544 |
| Hamilton | 27 | 4,419 | 25 | 2,825 | 22 | 1,594 |
| Kelowna | 21 | 5,799 | 21 | 3,522 | 14 | 2,277 |
| Kitchener/Waterloo | 23 | 5,025 | 28 | 2,237 | 11 | 2,788 |
| Langley | 30 | 3,987 | 32 | 1,841 | 17 | 2,146 |
| London | 22 | 5,634 | 23 | 3,172 | 13 | 2,462 |
| Moncton/Greater Moncton International | 12 | 8,714 | 13 | 4,880 | 7 | 3,834 |
| Montréal/Mirabel International | 40 | 1,517 | 38 | 1,231 | 34 | 286 |
| Montréal/Pierre Elliott Trudeau International | 4 | 16,568 | 4 | 16,568 | 0 | 0 |
| Montréal/St-Hubert | 13 | 8,548 | 18 | 3,912 | 5 | 4,636 |
| Oshawa | 33 | 3,551 | 36 | 1,555 | 19 | 1,996 |
| Ottawa/Macdonald-Cartier International | 8 | 10,977 | 7 | 8,752 | 15 | 2,225 |
| Pitt Meadows | 19 | 6,197 | 29 | 2,205 | 6 | 3,992 |
| Prince George | 36 | 2,727 | 33 | 1,831 | 29 | 896 |
| Québec/Jean Lesage International | 14 | 7,781 | 9 | 5,897 | 21 | 1,884 |
| Regina International | 28 | 4,329 | 24 | 3,035 | 24 | 1,294 |
| Saskatoon/John G Diefenbaker International | 17 | 6,344 | 15 | 4,238 | 18 | 2,106 |
| Sault Ste. Marie | 31 | 3,741 | 34 | 1,747 | 20 | 1,994 |
| St. John's International | 34 | 2,831 | 26 | 2,655 | 37 | 176 |
| St-Jean | 42 | 842 | 42 | 598 | 36 | 244 |
| Sudbury | 37 | 2,342 | 31 | 2,083 | 35 | 259 |
| Thunder Bay | 16 | 6,793 | 16 | 4,227 | 12 | 2,566 |
| Toronto/Buttonville Municipal | 15 | 7,466 | 17 | 3,974 | 8 | 3,492 |
| Toronto/City Centre | 25 | 4,794 | 27 | 2,624 | 16 | 2,170 |
| Toronto/Lester B Pearson International | 1 | 31,368 | 1 | 31,368 | 0 | 0 |
| Vancouver Harbour | 32 | 3,637 | 19 | 3,637 | 0 | 0 |
| Vancouver International | 2 | 22,288 | 2 | 22,288 | 0 | 0 |
| Victoria International | 7 | 11,912 | 8 | 6,091 | 4 | 5,821 |
| Whitehorse International | 41 | 1,362 | 41 | 898 | 32 | 464 |
| Windsor | 38 | 2,241 | 37 | 1,363 | 30 | 878 |
| Winnipeg/James Armstrong Richardson International | 9 | 10,771 | 6 | 9,831 | 27 | 940 |
| Winnipeg/St. Andrews | 24 | 5,001 | 30 | 2,107 | 10 | 2,894 |
| Yellowknife | 26 | 4,751 | 22 | 3,445 | 23 | 1,306 |
| Total of NAV CANADA towers (42) | . | 310,665 | . | 222,619 | . | 88,046 |

Table 1-2
Total aircraft movements by class of operation — NAV CANADA flight service stations

| | Total | | Itinerant | | Local | |
|--|-------------------|---------------------|-------------------|---------------------|-------------------|---------------------|
| | Rank of movements | Number of movements | Rank of movements | Number of movements | Rank of movements | Number of movements |
| Brandon Municipal | 45 | 570 | 49 | 384 | 21 | 186 |
| Campbell River | 15 | 1,966 | 20 | 1,124 | 6 | 842 |
| Castlegar | 43 | 675 | 51 | 323 | 15 | 352 |
| Charlottetown | 22 | 1,264 | 22 | 956 | 17 | 308 |
| Churchill | 44 | 580 | 42 | 580 | 0 | 0 |
| Cranbrook | 30 | 914 | 31 | 738 | 22 | 176 |
| Dawson Creek | 47 | 538 | 43 | 538 | 0 | 0 |
| Deer Lake | 23 | 1,240 | 19 | 1,131 | 28 | 109 |
| Fort McMurray | 2 | 3,559 | 1 | 3,239 | 16 | 320 |
| Fort Nelson | 33 | 883 | 26 | 861 | 39 | 22 |
| Fort St John | 17 | 1,811 | 11 | 1,530 | 19 | 281 |
| Fredericton | 14 | 1,978 | 8 | 1,553 | 12 | 425 |
| Grande Prairie | 6 | 2,519 | 5 | 2,097 | 13 | 422 |
| High Level | 42 | 682 | 37 | 671 | 42 | 11 |
| Îles-de-la-Madeleine | 50 | 452 | 48 | 432 | 40 | 20 |
| Inuvik/Mike Zubko | 38 | 688 | 35 | 680 | 43 | 8 |
| Iqaluit | 26 | 1,150 | 21 | 1,014 | 23 | 136 |
| Kamloops | 9 | 2,273 | 12 | 1,511 | 8 | 762 |
| Kenora | 35 | 761 | 39 | 649 | 27 | 112 |
| Kingston | 11 | 2,131 | 15 | 1,315 | 7 | 816 |
| Kuujuuaq | 34 | 794 | 32 | 710 | 31 | 84 |
| Kuujuarapik | 52 | 311 | 52 | 311 | 0 | 0 |
| La Grande Rivière | 36 | 691 | 40 | 613 | 32 | 78 |
| La Ronge | 21 | 1,339 | 16 | 1,265 | 33 | 74 |
| Lethbridge | 20 | 1,637 | 18 | 1,171 | 10 | 466 |
| Lloydminster | 28 | 980 | 34 | 680 | 18 | 300 |
| Medicine Hat | 25 | 1,206 | 23 | 928 | 20 | 278 |
| Mont-Joli | 53 | 245 | 53 | 245 | 0 | 0 |
| Nanaimo | 16 | 1,838 | 13 | 1,422 | 14 | 416 |
| Norman Wells | 39 | 687 | 38 | 669 | 41 | 18 |
| North Bay | 1 | 4,338 | 7 | 1,846 | 1 | 2,492 |
| Ottawa/Gatineau | 13 | 2,078 | 24 | 922 | 4 | 1,156 |
| Peace River | 31 | 902 | 25 | 870 | 36 | 32 |
| Penticton | 10 | 2,160 | 27 | 842 | 3 | 1,318 |
| Port Hardy | 41 | 686 | 41 | 594 | 30 | 92 |
| Prince Albert | 24 | 1,231 | 17 | 1,201 | 38 | 30 |
| Prince Rupert | 54 | 237 | 54 | 237 | 0 | 0 |
| Rankin Inlet | 37 | 688 | 33 | 686 | 46 | 2 |
| Red Deer Regional | 4 | 2,652 | 10 | 1,544 | 5 | 1,108 |
| Rouyn-Noranda | 40 | 686 | 36 | 680 | 44 | 6 |
| Saint John | 18 | 1,801 | 14 | 1,345 | 11 | 456 |
| Sept-Îles | 19 | 1,652 | 9 | 1,546 | 29 | 106 |
| Sioux Lookout | 8 | 2,373 | 4 | 2,321 | 34 | 52 |
| Smithers | 49 | 510 | 46 | 510 | 0 | 0 |
| St Anthony | 51 | 377 | 50 | 377 | 0 | 0 |
| St Catharines | 27 | 1,131 | 47 | 493 | 9 | 638 |
| Terrace | 29 | 940 | 28 | 808 | 24 | 132 |
| Thompson | 7 | 2,426 | 3 | 2,392 | 35 | 34 |
| Timmins | 12 | 2,093 | 6 | 1,971 | 25 | 122 |
| Val-D'or | 32 | 894 | 30 | 776 | 26 | 118 |
| Victoria Harbour | 5 | 2,618 | 2 | 2,616 | 45 | 2 |
| Wabush | 48 | 521 | 45 | 521 | 0 | 0 |
| Whitecourt | 3 | 2,941 | 29 | 793 | 2 | 2,148 |
| Williams Lake | 46 | 558 | 44 | 526 | 37 | 32 |
| Total of all flight service stations (54) | . | 72,855 | . | 55,757 | . | 17,098 |

Table 2-1
Total aircraft movements, civil and military — NAV CANADA towers

| | Civil movements | | | Military movements | | | | |
|---|-----------------|----------------|------------------------|--------------------|--------------|--------------|--------------|-------|
| | Total | Itinerant | | Local | Total | Itinerant | | Local |
| | | Commercial | Private and government | | | | | |
| | number | | | | | | | |
| Abbotsford | 15,252 | 4,651 | 903 | 9,698 | 31 | 21 | 10 | |
| Boundary Bay | 12,036 | 3,772 | 840 | 7,424 | 0 | 0 | 0 | |
| Calgary International | 18,097 | 16,861 | 1,146 | 90 | 104 | 88 | 16 | |
| Calgary/Springbank | 9,353 | 2,600 | 927 | 5,826 | 104 | 88 | 16 | |
| Chicoutimi/St-Honoré | 2,001 | 995 | 76 | 930 | 0 | 0 | 0 | |
| Edmonton City Centre | 6,104 | 3,654 | 1,259 | 1,191 | 107 | 65 | 42 | |
| Edmonton International | 10,301 | 9,635 | 261 | 405 | 88 | 78 | 10 | |
| Edmonton/Villeneuve | 4,005 | 714 | 215 | 3,076 | 0 | 0 | 0 | |
| Gander International | 2,383 | 1,226 | 213 | 944 | 386 | 182 | 204 | |
| Halifax International | 5,705 | 5,058 | 253 | 394 | 351 | 201 | 150 | |
| Hamilton | 4,417 | 2,368 | 455 | 1,594 | 2 | 2 | 0 | |
| Kelowna | 5,784 | 3,161 | 346 | 2,277 | 15 | 15 | 0 | |
| Kitchener/Waterloo | 4,989 | 1,813 | 394 | 2,782 | 36 | 30 | 6 | |
| Langley | 3,985 | 1,155 | 684 | 2,146 | 2 | 2 | 0 | |
| London | 5,587 | 2,354 | 799 | 2,434 | 47 | 19 | 28 | |
| Moncton/Greater Moncton International | 8,622 | 4,533 | 291 | 3,798 | 92 | 56 | 36 | |
| Montréal/Mirabel International | 1,445 | 954 | 237 | 254 | 72 | 40 | 32 | |
| Montréal/Pierre Elliott Trudeau International | 16,545 | 15,221 | 1,324 | 0 | 23 | 23 | 0 | |
| Montréal/St-Hubert | 8,424 | 2,815 | 985 | 4,624 | 124 | 112 | 12 | |
| Oshawa | 3,549 | 1,234 | 319 | 1,996 | 2 | 2 | 0 | |
| Ottawa/Macdonald-Cartier International | 10,835 | 7,783 | 849 | 2,203 | 142 | 120 | 22 | |
| Pitt Meadows | 6,197 | 1,440 | 765 | 3,992 | 0 | 0 | 0 | |
| Prince George | 2,721 | 1,537 | 288 | 896 | 6 | 6 | 0 | |
| Québec/Jean Lesage International | 7,626 | 5,016 | 758 | 1,852 | 155 | 123 | 32 | |
| Regina International | 4,067 | 2,477 | 328 | 1,262 | 262 | 230 | 32 | |
| Saskatoon/John G Diefenbaker International | 6,154 | 3,634 | 474 | 2,046 | 190 | 130 | 60 | |
| Sault Ste. Marie | 3,726 | 1,638 | 94 | 1,994 | 15 | 15 | 0 | |
| St. John's International | 2,671 | 2,275 | 220 | 176 | 160 | 160 | 0 | |
| St-Jean | 825 | 392 | 189 | 244 | 17 | 17 | 0 | |
| Sudbury | 2,336 | 1,853 | 224 | 259 | 6 | 6 | 0 | |
| Thunder Bay | 6,770 | 4,044 | 160 | 2,566 | 23 | 23 | 0 | |
| Toronto/Buttonville Municipal | 7,464 | 2,832 | 1,140 | 3,492 | 2 | 2 | 0 | |
| Toronto/City Centre | 4,787 | 2,429 | 188 | 2,170 | 7 | 7 | 0 | |
| Toronto/Lester B Pearson International | 31,356 | 30,241 | 1,115 | 0 | 12 | 12 | 0 | |
| Vancouver Harbour | 3,637 | 3,589 | 48 | 0 | 0 | 0 | 0 | |
| Vancouver International | 22,264 | 21,121 | 1,143 | 0 | 24 | 24 | 0 | |
| Victoria International | 11,594 | 5,019 | 1,016 | 5,559 | 318 | 56 | 262 | |
| Whitehorse International | 1,198 | 681 | 155 | 362 | 164 | 62 | 102 | |
| Windsor | 2,231 | 1,232 | 121 | 878 | 10 | 10 | 0 | |
| Winnipeg/James Armstrong Richardson International | 9,860 | 8,860 | 426 | 574 | 911 | 545 | 366 | |
| Winnipeg/St. Andrews | 4,979 | 1,917 | 168 | 2,894 | 22 | 22 | 0 | |
| Yellowknife | 4,595 | 3,280 | 91 | 1,224 | 156 | 74 | 82 | |
| Total of NAV CANADA towers (42) | 306,477 | 198,064 | 21,887 | 86,526 | 4,188 | 2,668 | 1,520 | |

Table 2-2
Total aircraft movements, civil and military — NAV CANADA flight service stations

| | Civil movements | | | | Military movements | | |
|--|-----------------|---------------|------------------------|---------------|--------------------|------------|------------|
| | Total | Itinerant | | Local | Total | Itinerant | Local |
| | | Commercial | Private and government | | | | |
| | number | | | | | | |
| Brandon Municipal | 457 | 221 | 74 | 162 | 113 | 89 | 24 |
| Campbell River | 1,954 | 838 | 274 | 842 | 12 | 12 | 0 |
| Castlegar | 672 | 292 | 28 | 352 | 3 | 3 | 0 |
| Charlottetown | 1,220 | 752 | 182 | 286 | 44 | 22 | 22 |
| Churchill | 580 | 580 | 0 | 0 | 0 | 0 | 0 |
| Cranbrook | 902 | 654 | 72 | 176 | 12 | 12 | 0 |
| Dawson Creek | 538 | 472 | 66 | 0 | 0 | 0 | 0 |
| Deer Lake | 1,234 | 1,070 | 55 | 109 | 6 | 6 | 0 |
| Fort McMurray | 3,541 | 2,892 | 329 | 320 | 18 | 18 | 0 |
| Fort Nelson | 858 | 727 | 109 | 22 | 25 | 25 | 0 |
| Fort St John | 1,793 | 1,401 | 111 | 281 | 18 | 18 | 0 |
| Fredericton | 1,645 | 1,179 | 175 | 291 | 333 | 199 | 134 |
| Grande Prairie | 2,517 | 1,821 | 274 | 422 | 2 | 2 | 0 |
| High Level | 682 | 653 | 18 | 11 | 0 | 0 | 0 |
| Îles-de-la-Madeleine | 452 | 390 | 42 | 20 | 0 | 0 | 0 |
| Inuvik/Mike Zubko | 672 | 636 | 28 | 8 | 16 | 16 | 0 |
| Iqaluit | 1,142 | 927 | 79 | 136 | 8 | 8 | 0 |
| Kamloops | 2,257 | 1,245 | 250 | 762 | 16 | 16 | 0 |
| Kenora | 707 | 595 | 28 | 84 | 54 | 26 | 28 |
| Kingston | 2,104 | 1,056 | 232 | 816 | 27 | 27 | 0 |
| Kuujuaq | 794 | 670 | 40 | 84 | 0 | 0 | 0 |
| Kuujuarapik | 311 | 311 | 0 | 0 | 0 | 0 | 0 |
| La Grande Rivière | 673 | 577 | 18 | 78 | 18 | 18 | 0 |
| La Ronge | 1,328 | 1,188 | 66 | 74 | 11 | 11 | 0 |
| Lethbridge | 1,593 | 826 | 301 | 466 | 44 | 44 | 0 |
| Lloydminster | 966 | 484 | 182 | 300 | 14 | 14 | 0 |
| Medicine Hat | 1,182 | 762 | 146 | 274 | 24 | 20 | 4 |
| Mont-Joli | 245 | 227 | 18 | 0 | 0 | 0 | 0 |
| Nanaimo | 1,830 | 928 | 486 | 416 | 8 | 8 | 0 |
| Norman Wells | 680 | 639 | 23 | 18 | 7 | 7 | 0 |
| North Bay | 4,318 | 1,621 | 205 | 2,492 | 20 | 20 | 0 |
| Ottawa/Gatineau | 2,016 | 443 | 417 | 1,156 | 62 | 62 | 0 |
| Peace River | 888 | 799 | 57 | 32 | 14 | 14 | 0 |
| Penticton | 2,136 | 716 | 102 | 1,318 | 24 | 24 | 0 |
| Port Hardy | 626 | 497 | 73 | 56 | 60 | 24 | 36 |
| Prince Albert | 1,213 | 1,030 | 153 | 30 | 18 | 18 | 0 |
| Prince Rupert | 233 | 205 | 28 | 0 | 4 | 4 | 0 |
| Rankin Inlet | 688 | 676 | 10 | 2 | 0 | 0 | 0 |
| Red Deer Regional | 2,627 | 1,146 | 373 | 1,108 | 25 | 25 | 0 |
| Rouyn-Noranda | 686 | 596 | 84 | 6 | 0 | 0 | 0 |
| Saint John | 1,685 | 968 | 287 | 430 | 116 | 90 | 26 |
| Sept-Îles | 1,651 | 1,413 | 132 | 106 | 1 | 1 | 0 |
| Sioux Lookout | 2,373 | 2,251 | 70 | 52 | 0 | 0 | 0 |
| Smithers | 510 | 445 | 65 | 0 | 0 | 0 | 0 |
| St Anthony | 377 | 352 | 25 | 0 | 0 | 0 | 0 |
| St Catharines | 1,090 | 317 | 135 | 638 | 41 | 41 | 0 |
| Terrace | 938 | 766 | 40 | 132 | 2 | 2 | 0 |
| Thompson | 2,420 | 2,246 | 140 | 34 | 6 | 6 | 0 |
| Timmins | 2,075 | 1,809 | 154 | 112 | 18 | 8 | 10 |
| Val-D'or | 886 | 678 | 90 | 118 | 8 | 8 | 0 |
| Victoria Harbour | 2,616 | 2,373 | 241 | 2 | 2 | 2 | 0 |
| Wabush | 521 | 497 | 24 | 0 | 0 | 0 | 0 |
| Whitecourt | 2,941 | 745 | 48 | 2,148 | 0 | 0 | 0 |
| Williams Lake | 554 | 438 | 84 | 32 | 4 | 4 | 0 |
| Total of all flight service stations (54) | 71,597 | 48,040 | 6,743 | 16,814 | 1,258 | 974 | 284 |

Table 3-1
Itinerant movements by type of operator — NAV CANADA towers

| | Total | Air carrier movements | | Other commercial movements | Private movements | Government movements | |
|---|----------------|-----------------------------|-----------------|----------------------------|-------------------|----------------------|--------------|
| | | Levels I to III and foreign | Levels IV to VI | | | Civil | Military |
| | number | | | | | | |
| Abbotsford | 5,575 | 702 | 2,577 | 1,372 | 669 | 234 | 21 |
| Boundary Bay | 4,612 | 9 | 711 | 3,052 | 777 | 63 | 0 |
| Calgary International | 18,095 | 15,512 | 891 | 458 | 1,016 | 130 | 88 |
| Calgary/Springbank | 3,615 | 2 | 665 | 1,933 | 913 | 14 | 88 |
| Chicoutimi/St-Honoré | 1,071 | 20 | 371 | 604 | 73 | 3 | 0 |
| Edmonton City Centre | 4,978 | 1,707 | 590 | 1,357 | 937 | 322 | 65 |
| Edmonton International | 9,974 | 9,051 | 447 | 137 | 209 | 52 | 78 |
| Edmonton/Villeneuve | 929 | 0 | 212 | 502 | 199 | 16 | 0 |
| Gander International | 1,621 | 335 | 849 | 42 | 165 | 48 | 182 |
| Halifax International | 5,512 | 4,479 | 536 | 43 | 205 | 48 | 201 |
| Hamilton | 2,825 | 1,634 | 696 | 38 | 327 | 128 | 2 |
| Kelowna | 3,522 | 2,299 | 268 | 594 | 259 | 87 | 15 |
| Kitchener/Waterloo | 2,237 | 302 | 1,125 | 386 | 388 | 6 | 30 |
| Langley | 1,841 | 97 | 198 | 860 | 672 | 12 | 2 |
| London | 3,172 | 1,008 | 408 | 938 | 720 | 79 | 19 |
| Moncton/Greater Moncton International | 4,880 | 4,471 | 43 | 19 | 140 | 151 | 56 |
| Montréal/Mirabel International | 1,231 | 783 | 141 | 30 | 200 | 37 | 40 |
| Montréal/Pierre Elliott Trudeau International | 16,568 | 14,303 | 612 | 306 | 1,159 | 165 | 23 |
| Montréal/St-Hubert | 3,912 | 1,680 | 268 | 867 | 865 | 120 | 112 |
| Oshawa | 1,555 | 112 | 103 | 1,019 | 316 | 3 | 2 |
| Ottawa/Macdonald-Cartier International | 8,752 | 6,189 | 402 | 1,192 | 356 | 493 | 120 |
| Pitt Meadows | 2,205 | 24 | 704 | 712 | 756 | 9 | 0 |
| Prince George | 1,831 | 1,181 | 240 | 116 | 189 | 99 | 6 |
| Québec/Jean Lesage International | 5,897 | 3,455 | 623 | 938 | 552 | 206 | 123 |
| Regina International | 3,035 | 1,930 | 525 | 22 | 139 | 189 | 230 |
| Saskatoon/John G Diefenbaker International | 4,238 | 2,723 | 742 | 169 | 173 | 301 | 130 |
| Sault Ste. Marie | 1,747 | 727 | 161 | 750 | 68 | 26 | 15 |
| St. John's International | 2,655 | 1,083 | 1,152 | 40 | 98 | 122 | 160 |
| St-Jean | 598 | 103 | 138 | 151 | 167 | 22 | 17 |
| Sudbury | 2,083 | 1,319 | 486 | 48 | 174 | 50 | 6 |
| Thunder Bay | 4,227 | 2,431 | 1,017 | 596 | 76 | 84 | 23 |
| Toronto/Buttonville Municipal | 3,974 | 440 | 539 | 1,853 | 1,093 | 47 | 2 |
| Toronto/City Centre | 2,624 | 979 | 547 | 903 | 162 | 26 | 7 |
| Toronto/Lester B Pearson International | 31,368 | 29,656 | 405 | 180 | 1,089 | 26 | 12 |
| Vancouver Harbour | 3,637 | 3,284 | 294 | 11 | 48 | 0 | 0 |
| Vancouver International | 22,288 | 19,768 | 1,150 | 203 | 899 | 244 | 24 |
| Victoria International | 6,091 | 2,849 | 1,711 | 459 | 966 | 50 | 56 |
| Whitehorse International | 898 | 509 | 168 | 4 | 115 | 40 | 62 |
| Windsor | 1,363 | 709 | 505 | 18 | 109 | 12 | 10 |
| Winnipeg/James Armstrong Richardson International | 9,831 | 8,044 | 756 | 60 | 210 | 216 | 545 |
| Winnipeg/St. Andrews | 2,107 | 379 | 1,151 | 387 | 150 | 18 | 22 |
| Yellowknife | 3,445 | 2,884 | 345 | 51 | 27 | 64 | 74 |
| Total of NAV CANADA towers (42) | 222,619 | 149,172 | 25,472 | 23,420 | 17,825 | 4,062 | 2,668 |

Table 3-2
Itinerant movements by type of operator — NAV CANADA flight service stations

| | Total | Air carrier movements | | Other commercial movements | Private movements | Government movements | |
|--|---------------|-----------------------------|-----------------|----------------------------|-------------------|----------------------|------------|
| | | Levels I to III and foreign | Levels IV to VI | | | Civil | Military |
| | number | | | | | | |
| Brandon Municipal | 384 | 118 | 86 | 17 | 53 | 21 | 89 |
| Campbell River | 1,124 | 542 | 236 | 60 | 260 | 14 | 12 |
| Castlegar | 323 | 209 | 42 | 41 | 26 | 2 | 3 |
| Charlottetown | 956 | 596 | 44 | 112 | 99 | 83 | 22 |
| Churchill | 580 | 559 | 17 | 4 | 0 | 0 | 0 |
| Cranbrook | 738 | 553 | 15 | 86 | 70 | 2 | 12 |
| Dawson Creek | 538 | 287 | 145 | 40 | 28 | 38 | 0 |
| Deer Lake | 1,131 | 624 | 422 | 24 | 13 | 42 | 6 |
| Fort McMurray | 3,239 | 2,025 | 516 | 351 | 299 | 30 | 18 |
| Fort Nelson | 861 | 447 | 222 | 58 | 83 | 26 | 25 |
| Fort St John | 1,530 | 945 | 353 | 103 | 82 | 29 | 18 |
| Fredericton | 1,553 | 978 | 191 | 10 | 99 | 76 | 199 |
| Grande Prairie | 2,097 | 1,448 | 361 | 12 | 260 | 14 | 2 |
| High Level | 671 | 579 | 72 | 2 | 8 | 10 | 0 |
| Îles-de-la-Madeleine | 432 | 238 | 138 | 14 | 8 | 34 | 0 |
| Inuvik/Mike Zubko | 680 | 219 | 417 | 0 | 8 | 20 | 16 |
| Iqaluit | 1,014 | 879 | 14 | 34 | 40 | 39 | 8 |
| Kamloops | 1,511 | 842 | 208 | 195 | 190 | 60 | 16 |
| Kenora | 649 | 368 | 167 | 60 | 22 | 6 | 26 |
| Kingston | 1,315 | 459 | 332 | 265 | 198 | 34 | 27 |
| Kuujuaq | 710 | 656 | 14 | 0 | 16 | 24 | 0 |
| Kuujuarapik | 311 | 301 | 10 | 0 | 0 | 0 | 0 |
| La Grande Rivière | 613 | 479 | 98 | 0 | 8 | 10 | 18 |
| La Ronge | 1,265 | 1,143 | 14 | 31 | 11 | 55 | 11 |
| Lethbridge | 1,171 | 512 | 27 | 287 | 282 | 19 | 44 |
| Lloydminster | 680 | 201 | 269 | 14 | 170 | 12 | 14 |
| Medicine Hat | 928 | 663 | 62 | 37 | 134 | 12 | 20 |
| Mont-Joli | 245 | 224 | 2 | 1 | 12 | 6 | 0 |
| Nanaimo | 1,422 | 424 | 306 | 198 | 460 | 26 | 8 |
| Norman Wells | 669 | 525 | 114 | 0 | 10 | 13 | 7 |
| North Bay | 1,846 | 572 | 585 | 464 | 167 | 38 | 20 |
| Ottawa/Gatineau | 922 | 122 | 204 | 117 | 345 | 72 | 62 |
| Peace River | 870 | 666 | 120 | 13 | 39 | 18 | 14 |
| Penticton | 842 | 289 | 383 | 44 | 96 | 6 | 24 |
| Port Hardy | 594 | 419 | 71 | 7 | 26 | 47 | 24 |
| Prince Albert | 1,201 | 940 | 83 | 7 | 43 | 110 | 18 |
| Prince Rupert | 237 | 158 | 45 | 2 | 10 | 18 | 4 |
| Rankin Inlet | 686 | 670 | 6 | 0 | 4 | 6 | 0 |
| Red Deer Regional | 1,544 | 466 | 562 | 118 | 351 | 22 | 25 |
| Rouyn-Noranda | 680 | 473 | 121 | 2 | 68 | 16 | 0 |
| Saint John | 1,345 | 781 | 66 | 121 | 278 | 9 | 90 |
| Sept-Îles | 1,546 | 1,063 | 330 | 20 | 72 | 60 | 1 |
| Sioux Lookout | 2,321 | 1,439 | 764 | 48 | 29 | 41 | 0 |
| Smithers | 510 | 348 | 97 | 0 | 49 | 16 | 0 |
| St Anthony | 377 | 119 | 194 | 39 | 0 | 25 | 0 |
| St Catharines | 493 | 4 | 281 | 32 | 115 | 20 | 41 |
| Terrace | 808 | 512 | 254 | 0 | 12 | 28 | 2 |
| Thompson | 2,392 | 1,730 | 507 | 9 | 17 | 123 | 6 |
| Timmins | 1,971 | 1,649 | 146 | 14 | 134 | 20 | 8 |
| Val-D'or | 776 | 647 | 31 | 0 | 74 | 16 | 8 |
| Victoria Harbour | 2,616 | 2,325 | 48 | 0 | 168 | 73 | 2 |
| Wabush | 521 | 287 | 204 | 6 | 18 | 6 | 0 |
| Whitecourt | 793 | 72 | 517 | 156 | 42 | 6 | 0 |
| Williams Lake | 526 | 326 | 88 | 24 | 60 | 24 | 4 |
| Total of all flight service stations (54) | 55,757 | 34,120 | 10,621 | 3,299 | 5,166 | 1,577 | 974 |

Table 4-1

**Itinerant movements by I.F.R. (Instrument flight rules) and V.F.R. (Visual flight rules) and runway 88 movements
— NAV CANADA towers**

| | Itinerant movements | | | | Runway 88 flights | |
|--|--|----------------|---|---------------|-------------------|---|
| | Total of IFR and VFR flights ¹ | IFR | IFR flights, as percentage of total flights | VFR | | VFR flights, as percentage of total flights |
| | number | | percent | number | | percent |
| Abbotsford | 5,575 | 1,438 | 25.7 | 4,137 | 74.2 | 1,440 |
| Boundary Bay | 4,612 | 305 | 6.6 | 4,307 | 93.3 | 377 |
| Calgary International | 18,095 | 17,182 | 94.9 | 913 | 5.0 | 296 |
| Calgary/Springbank | 3,615 | 135 | 3.7 | 3,480 | 96.2 | 2,212 |
| Chicoutimi/St-Honoré | 1,071 | 138 | 12.8 | 933 | 87.1 | 24 |
| Edmonton City Centre | 4,978 | 2,858 | 57.4 | 2,120 | 42.5 | 2,116 |
| Edmonton International | 9,974 | 9,457 | 94.8 | 517 | 5.1 | 860 |
| Edmonton/Villeneuve | 929 | 4 | 0.4 | 925 | 99.5 | 99 |
| Gander International | 1,621 | 1,022 | 63.0 | 599 | 36.9 | 52 |
| Halifax International | 5,512 | 5,044 | 91.5 | 468 | 8.4 | 359 |
| Hamilton | 2,825 | 2,096 | 74.1 | 729 | 25.8 | 393 |
| Kelowna | 3,522 | 2,625 | 74.5 | 897 | 25.4 | 240 |
| Kitchener/Waterloo | 2,237 | 610 | 27.2 | 1,627 | 72.7 | 224 |
| Langley | 1,841 | 11 | 0.5 | 1,830 | 99.4 | 3,091 |
| London | 3,172 | 1,247 | 39.3 | 1,925 | 60.6 | 219 |
| Moncton/Greater Moncton International | 4,880 | 1,894 | 38.8 | 2,986 | 61.1 | 70 |
| Montréal/Mirabel International | 1,231 | 899 | 73.0 | 332 | 26.9 | 538 |
| Montréal/Pierre Elliott Trudeau International | 16,568 | 16,018 | 96.6 | 550 | 3.3 | 1,608 |
| Montréal/St-Hubert | 3,912 | 1,146 | 29.2 | 2,766 | 70.7 | 737 |
| Oshawa | 1,555 | 76 | 4.8 | 1,479 | 95.1 | 457 |
| Ottawa/Macdonald-Cartier International | 8,752 | 6,874 | 78.5 | 1,878 | 21.4 | 593 |
| Pitt Meadows | 2,205 | 10 | 0.4 | 2,195 | 99.5 | 1,807 |
| Prince George | 1,831 | 1,313 | 71.7 | 518 | 28.2 | 237 |
| Québec/Jean Lesage International | 5,897 | 4,033 | 68.3 | 1,864 | 31.6 | 444 |
| Regina International | 3,035 | 2,343 | 77.1 | 692 | 22.8 | 44 |
| Saskatoon/John G Diefenbaker International | 4,238 | 3,206 | 75.6 | 1,032 | 24.3 | 23 |
| Sault Ste. Marie | 1,747 | 930 | 53.2 | 817 | 46.7 | 66 |
| St. John's International | 2,655 | 2,483 | 93.5 | 172 | 6.4 | 53 |
| St-Jean | 598 | 194 | 32.4 | 404 | 67.5 | 145 |
| Sudbury | 2,083 | 1,645 | 78.9 | 438 | 21.0 | 125 |
| Thunder Bay | 4,227 | 3,127 | 73.9 | 1,100 | 26.0 | 112 |
| Toronto/Buttonville Municipal | 3,974 | 767 | 19.3 | 3,207 | 80.6 | 412 |
| Toronto/City Centre | 2,624 | 1,081 | 41.1 | 1,543 | 58.8 | 1,637 |
| Toronto/Lester B Pearson International | 31,368 | 31,270 | 99.6 | 98 | 0.3 | 157 |
| Vancouver Harbour | 3,637 | 121 | 3.3 | 3,516 | 96.6 | 1,379 |
| Vancouver International | 22,288 | 18,413 | 82.6 | 3,875 | 17.3 | 7,713 |
| Victoria International | 6,091 | 3,216 | 52.7 | 2,875 | 47.2 | 5,700 |
| Whitehorse International | 898 | 549 | 61.1 | 349 | 38.8 | 133 |
| Windsor | 1,363 | 825 | 60.5 | 538 | 39.4 | 38 |
| Winnipeg/James Armstrong Richardson International | 9,831 | 8,482 | 86.2 | 1,349 | 13.7 | 494 |
| Winnipeg/St. Andrews | 2,107 | 68 | 3.2 | 2,039 | 96.7 | 64 |
| Yellowknife | 3,445 | 1,907 | 55.3 | 1,538 | 44.6 | 615 |
| Total of NAV CANADA towers (42) | 222,619 | 157,062 | 70.6 | 65,557 | 29.4 | 37,403 |

1. Total excludes runway 88 flights.

Table 4-2

Itinerant movements by I.F.R. (Instrument flight rules) and V.F.R. (Visual flight rules) and runway 88 movements — NAV CANADA flight service stations

| | Itinerant movements | | | | Runway 88 flights number | |
|--|--|---------------|---|---------------|-----------------------------|---|
| | Total of IFR and VFR flights ¹ | IFR | IFR flights, as percentage of total flights | VFR | | VFR flights, as percentage of total flights |
| | number | | percent | number | | percent |
| Brandon Municipal | 384 | 162 | 42.1 | 222 | 57.8 | 12 |
| Campbell River | 1,124 | 557 | 49.5 | 567 | 50.4 | 160 |
| Castlegar | 323 | 243 | 75.2 | 80 | 24.7 | 69 |
| Charlottetown | 956 | 575 | 60.1 | 381 | 39.8 | 13 |
| Churchill | 580 | 542 | 93.4 | 38 | 6.5 | 15 |
| Cranbrook | 738 | 628 | 85.0 | 110 | 14.9 | 38 |
| Dawson Creek | 538 | 303 | 56.3 | 235 | 43.6 | 16 |
| Deer Lake | 1,131 | 1,068 | 94.4 | 63 | 5.5 | 13 |
| Fort McMurray | 3,239 | 1,973 | 60.9 | 1,266 | 39.0 | 3 |
| Fort Nelson | 861 | 507 | 58.8 | 354 | 41.1 | 49 |
| Fort St John | 1,530 | 999 | 65.2 | 531 | 34.7 | 26 |
| Fredericton | 1,553 | 788 | 50.7 | 765 | 49.2 | 46 |
| Grande Prairie | 2,097 | 1,596 | 76.1 | 501 | 23.8 | 82 |
| High Level | 671 | 469 | 69.8 | 202 | 30.1 | 51 |
| Îles-de-la-Madeleine | 432 | 286 | 66.2 | 146 | 33.7 | 134 |
| Inuvik/Mike Zubko | 680 | 251 | 36.9 | 429 | 63.0 | 0 |
| Iqaluit | 1,014 | 761 | 75.0 | 253 | 24.9 | 0 |
| Kamloops | 1,511 | 1,075 | 71.1 | 436 | 28.8 | 141 |
| Kenora | 649 | 289 | 44.5 | 360 | 55.4 | 36 |
| Kingston | 1,315 | 574 | 43.6 | 741 | 56.3 | 71 |
| Kuujuuaq | 710 | 382 | 53.8 | 328 | 46.1 | 1 |
| Kuujuuarapik | 311 | 240 | 77.1 | 71 | 22.8 | 0 |
| La Grande Rivière | 613 | 460 | 75.0 | 153 | 24.9 | 113 |
| La Ronge | 1,265 | 638 | 50.4 | 627 | 49.5 | 119 |
| Lethbridge | 1,171 | 591 | 50.4 | 580 | 49.5 | 20 |
| Lloydminster | 680 | 303 | 44.5 | 377 | 55.4 | 17 |
| Medicine Hat | 928 | 585 | 63.0 | 343 | 36.9 | 79 |
| Mont-Joli | 245 | 221 | 90.2 | 24 | 9.7 | 11 |
| Nanaimo | 1,422 | 546 | 38.3 | 876 | 61.6 | 1,358 |
| Norman Wells | 669 | 167 | 24.9 | 502 | 75.0 | 10 |
| North Bay | 1,846 | 741 | 40.1 | 1,105 | 59.8 | 249 |
| Ottawa/Gatineau | 922 | 154 | 16.7 | 768 | 83.2 | 95 |
| Peace River | 870 | 623 | 71.6 | 247 | 28.3 | 45 |
| Penticton | 842 | 280 | 33.2 | 562 | 66.7 | 75 |
| Port Hardy | 594 | 202 | 34.0 | 392 | 65.9 | 179 |
| Prince Albert | 1,201 | 1,032 | 85.9 | 169 | 14.0 | 24 |
| Prince Rupert | 237 | 172 | 72.5 | 65 | 27.4 | 12 |
| Rankin Inlet | 686 | 570 | 83.0 | 116 | 16.9 | 0 |
| Red Deer Regional | 1,544 | 495 | 32.0 | 1,049 | 67.9 | 208 |
| Rouyn-Noranda | 680 | 595 | 87.5 | 85 | 12.5 | 20 |
| Saint John | 1,345 | 872 | 64.8 | 473 | 35.1 | 29 |
| Sept-Îles | 1,546 | 1,199 | 77.5 | 347 | 22.4 | 184 |
| Sioux Lookout | 2,321 | 1,451 | 62.5 | 870 | 37.4 | 352 |
| Smithers | 510 | 364 | 71.3 | 146 | 28.6 | 132 |
| St Anthony | 377 | 201 | 53.3 | 176 | 46.6 | 1 |
| St Catharines | 493 | 40 | 8.1 | 453 | 91.8 | 104 |
| Terrace | 808 | 538 | 66.5 | 270 | 33.4 | 124 |
| Thompson | 2,392 | 1,184 | 49.4 | 1,208 | 50.5 | 8 |
| Timmins | 1,971 | 1,567 | 79.5 | 404 | 20.4 | 320 |
| Val-D'or | 776 | 621 | 80.0 | 155 | 19.9 | 90 |
| Victoria Harbour | 2,616 | 180 | 6.8 | 2,436 | 93.1 | 278 |
| Wabush | 521 | 508 | 97.5 | 13 | 2.4 | 63 |
| Whitecourt | 793 | 138 | 17.4 | 655 | 82.5 | 34 |
| Williams Lake | 526 | 397 | 75.4 | 129 | 24.5 | 173 |
| Total of all flight service stations (54) | 55,757 | 31,903 | 57.2 | 23,854 | 42.8 | 5,502 |

1. Total excludes runway 88 flights.

Table 5-1
Itinerant movements by type of power plant — NAV CANADA towers

| | Total | Jet engines | Turbo-propellers | Piston engines | Helicopters | Gliders |
|---|----------------|---------------|------------------|----------------|---------------|-----------|
| | number | | | | | |
| Abbotsford | 5,575 | 533 | 292 | 3,051 | 1,698 | 1 |
| Boundary Bay | 4,612 | 1 | 19 | 4,401 | 190 | 1 |
| Calgary International | 18,095 | 11,746 | 5,270 | 817 | 262 | 0 |
| Calgary/Springbank | 3,615 | 2 | 89 | 2,860 | 662 | 2 |
| Chicoutimi/St-Honoré | 1,071 | 2 | 25 | 883 | 159 | 2 |
| Edmonton City Centre | 4,978 | 462 | 2,171 | 1,815 | 530 | 0 |
| Edmonton International | 9,974 | 5,699 | 3,732 | 519 | 24 | 0 |
| Edmonton/Villeneuve | 929 | 8 | 4 | 753 | 164 | 0 |
| Gander International | 1,621 | 418 | 576 | 416 | 211 | 0 |
| Halifax International | 5,512 | 3,212 | 1,641 | 313 | 346 | 0 |
| Hamilton | 2,825 | 1,218 | 852 | 655 | 100 | 0 |
| Kelowna | 3,522 | 1,559 | 1,002 | 613 | 348 | 0 |
| Kitchener/Waterloo | 2,237 | 156 | 321 | 1,517 | 243 | 0 |
| Langley | 1,841 | 0 | 95 | 1,264 | 482 | 0 |
| London | 3,172 | 257 | 1,222 | 1,558 | 135 | 0 |
| Moncton/Greater Moncton International | 4,880 | 979 | 738 | 3,096 | 67 | 0 |
| Montréal/Mirabel International | 1,231 | 628 | 396 | 156 | 51 | 0 |
| Montréal/Pierre Elliott Trudeau International | 16,568 | 11,185 | 4,754 | 368 | 261 | 0 |
| Montréal/St-Hubert | 3,912 | 166 | 759 | 2,583 | 404 | 0 |
| Oshawa | 1,555 | 0 | 53 | 1,405 | 97 | 0 |
| Ottawa/Macdonald-Cartier International | 8,752 | 4,899 | 2,040 | 1,394 | 419 | 0 |
| Pitt Meadows | 2,205 | 2 | 3 | 1,891 | 309 | 0 |
| Prince George | 1,831 | 518 | 851 | 128 | 334 | 0 |
| Québec/Jean Lesage International | 5,897 | 1,223 | 2,524 | 1,520 | 628 | 2 |
| Regina International | 3,035 | 1,441 | 689 | 888 | 17 | 0 |
| Saskatoon/John G Diefenbaker International | 4,238 | 1,420 | 1,663 | 1,132 | 23 | 0 |
| Sault Ste. Marie | 1,747 | 26 | 856 | 852 | 13 | 0 |
| St. John's International | 2,655 | 978 | 1,289 | 21 | 367 | 0 |
| St-Jean | 598 | 2 | 70 | 503 | 20 | 3 |
| Sudbury | 2,083 | 48 | 1,497 | 347 | 191 | 0 |
| Thunder Bay | 4,227 | 820 | 2,490 | 706 | 211 | 0 |
| Toronto/Buttonville Municipal | 3,974 | 105 | 497 | 2,978 | 393 | 1 |
| Toronto/City Centre | 2,624 | 2 | 1,099 | 1,241 | 282 | 0 |
| Toronto/Lester B Pearson International | 31,368 | 26,155 | 5,117 | 62 | 34 | 0 |
| Vancouver Harbour | 3,637 | 0 | 1,809 | 1,074 | 754 | 0 |
| Vancouver International | 22,288 | 10,981 | 7,852 | 2,471 | 984 | 0 |
| Victoria International | 6,091 | 942 | 2,126 | 2,670 | 353 | 0 |
| Whitehorse International | 898 | 349 | 244 | 223 | 82 | 0 |
| Windsor | 1,363 | 126 | 662 | 549 | 26 | 0 |
| Winnipeg/James Armstrong Richardson International | 9,831 | 4,790 | 3,902 | 1,088 | 51 | 0 |
| Winnipeg/St. Andrews | 2,107 | 0 | 199 | 1,825 | 83 | 0 |
| Yellowknife | 3,445 | 696 | 2,221 | 275 | 253 | 0 |
| Total of NAV CANADA towers (42) | 222,619 | 93,754 | 63,711 | 52,881 | 12,261 | 12 |

Table 5-2
Itinerant movements by type of power plant — NAV CANADA flight service stations

| | Total | Jet engines | Turbo-propellers | Piston engines | Helicopters | Gliders |
|--|---------------|--------------|------------------|----------------|--------------|----------|
| | number | | | | | |
| Brandon Municipal | 384 | 19 | 190 | 158 | 17 | 0 |
| Campbell River | 1,124 | 35 | 577 | 221 | 291 | 0 |
| Castlegar | 323 | 18 | 227 | 43 | 35 | 0 |
| Charlottetown | 956 | 136 | 342 | 407 | 71 | 0 |
| Churchill | 580 | 4 | 559 | 0 | 17 | 0 |
| Cranbrook | 738 | 44 | 535 | 157 | 2 | 0 |
| Dawson Creek | 538 | 10 | 353 | 46 | 129 | 0 |
| Deer Lake | 1,131 | 211 | 859 | 23 | 38 | 0 |
| Fort McMurray | 3,239 | 756 | 1,418 | 579 | 486 | 0 |
| Fort Nelson | 861 | 35 | 458 | 234 | 134 | 0 |
| Fort St John | 1,530 | 238 | 784 | 133 | 375 | 0 |
| Fredericton | 1,553 | 309 | 422 | 629 | 193 | 0 |
| Grande Prairie | 2,097 | 140 | 1,345 | 345 | 267 | 0 |
| High Level | 671 | 4 | 550 | 73 | 44 | 0 |
| Îles-de-la-Madeleine | 432 | 10 | 251 | 169 | 2 | 0 |
| Inuvik/Mike Zubko | 680 | 121 | 438 | 14 | 107 | 0 |
| Iqaluit | 1,014 | 311 | 668 | 5 | 30 | 0 |
| Kamloops | 1,511 | 70 | 888 | 377 | 176 | 0 |
| Kenora | 649 | 4 | 352 | 173 | 120 | 0 |
| Kingston | 1,315 | 35 | 549 | 661 | 70 | 0 |
| Kuujuaq | 710 | 142 | 558 | 2 | 8 | 0 |
| Kuujuarapik | 311 | 0 | 305 | 0 | 6 | 0 |
| La Grande Rivière | 613 | 16 | 583 | 2 | 12 | 0 |
| La Ronge | 1,265 | 2 | 922 | 331 | 10 | 0 |
| Lethbridge | 1,171 | 53 | 535 | 561 | 22 | 0 |
| Lloydminster | 680 | 4 | 258 | 398 | 20 | 0 |
| Medicine Hat | 928 | 23 | 578 | 281 | 46 | 0 |
| Mont-Joli | 245 | 10 | 221 | 13 | 1 | 0 |
| Nanaimo | 1,422 | 17 | 446 | 913 | 46 | 0 |
| Norman Wells | 669 | 136 | 330 | 123 | 80 | 0 |
| North Bay | 1,846 | 34 | 733 | 492 | 587 | 0 |
| Ottawa/Gatineau | 922 | 8 | 132 | 620 | 161 | 1 |
| Peace River | 870 | 14 | 583 | 173 | 100 | 0 |
| Penticton | 842 | 23 | 306 | 220 | 293 | 0 |
| Port Hardy | 594 | 2 | 399 | 88 | 105 | 0 |
| Prince Albert | 1,201 | 6 | 1,023 | 134 | 38 | 0 |
| Prince Rupert | 237 | 15 | 177 | 4 | 41 | 0 |
| Rankin Inlet | 686 | 105 | 575 | 0 | 6 | 0 |
| Red Deer Regional | 1,544 | 37 | 543 | 870 | 93 | 1 |
| Rouyn-Noranda | 680 | 64 | 576 | 38 | 2 | 0 |
| Saint John | 1,345 | 307 | 493 | 456 | 89 | 0 |
| Sept-Îles | 1,546 | 33 | 1,099 | 257 | 157 | 0 |
| Sioux Lookout | 2,321 | 4 | 2,141 | 139 | 37 | 0 |
| Smithers | 510 | 22 | 379 | 12 | 97 | 0 |
| St Anthony | 377 | 4 | 335 | 24 | 14 | 0 |
| St Catharines | 493 | 10 | 14 | 403 | 66 | 0 |
| Terrace | 808 | 26 | 530 | 4 | 248 | 0 |
| Thompson | 2,392 | 16 | 1,858 | 282 | 236 | 0 |
| Timmins | 1,971 | 12 | 1,662 | 259 | 38 | 0 |
| Val-D'or | 776 | 80 | 584 | 81 | 31 | 0 |
| Victoria Harbour | 2,616 | 0 | 1,628 | 201 | 787 | 0 |
| Wabush | 521 | 4 | 479 | 32 | 6 | 0 |
| Whitecourt | 793 | 12 | 90 | 139 | 552 | 0 |
| Williams Lake | 526 | 14 | 346 | 120 | 46 | 0 |
| Total of all flight service stations (54) | 55,757 | 3,765 | 33,186 | 12,119 | 6,685 | 2 |

Table 6-1
Itinerant movements by aircraft weight group — NAV CANADA towers

| | Gross take-off weight in kilograms | | | | | | | | | |
|--|------------------------------------|-------------------|-------------------|-------------------|--------------------|---------------------|---------------------|---------------------|----------------------|---------------------|
| | 2 000 and under | 2 001 to 4 000 | 4 001 to 5 670 | 5 671 to 9 000 | 9 001 to 18 000 | 18 001 to 35 000 | 35 001 to 70 000 | 70 001 to 90 000 | 90 001 to 136 000 | 136 001 and over |
| | number | | | | | | | | | |
| Abbotsford | 4,158 | 429 | 323 | 109 | 9 | 167 | 366 | 14 | 0 | 0 |
| Boundary Bay | 4,396 | 193 | 16 | 7 | 0 | 0 | 0 | 0 | 0 | 0 |
| Calgary International | 616 | 586 | 1,778 | 2,464 | 902 | 3,468 | 6,277 | 849 | 587 | 568 |
| Calgary/Springbank | 3,361 | 176 | 70 | 8 | 0 | 0 | 0 | 0 | 0 | 0 |
| Chicoutimi/St-Honoré | 860 | 188 | 21 | 2 | 0 | 0 | 0 | 0 | 0 | 0 |
| Edmonton City Centre | 1,803 | 530 | 1,675 | 747 | 191 | 32 | 0 | 0 | 0 | 0 |
| Edmonton International | 274 | 377 | 1,090 | 1,111 | 461 | 2,374 | 3,409 | 509 | 242 | 127 |
| Edmonton/Villeneuve | 856 | 29 | 44 | 0 | 0 | 0 | 0 | 0 | 0 | 0 |
| Gander International | 482 | 28 | 121 | 358 | 264 | 167 | 42 | 32 | 51 | 76 |
| Halifax International | 87 | 261 | 445 | 824 | 766 | 1,062 | 1,436 | 349 | 160 | 122 |
| Hamilton | 618 | 320 | 321 | 344 | 191 | 160 | 328 | 26 | 517 | 0 |
| Kelowna | 849 | 82 | 240 | 596 | 68 | 784 | 869 | 1 | 32 | 1 |
| Kitchener/Waterloo | 1,599 | 161 | 158 | 50 | 202 | 26 | 1 | 40 | 0 | 0 |
| Langley | 1,682 | 148 | 8 | 2 | 1 | 0 | 0 | 0 | 0 | 0 |
| London | 1,810 | 131 | 248 | 65 | 635 | 174 | 98 | 11 | 0 | 0 |
| Moncton/Greater Moncton International | 2,972 | 205 | 322 | 305 | 154 | 511 | 158 | 6 | 247 | 0 |
| Montréal/Mirabel International | 111 | 157 | 48 | 236 | 41 | 120 | 98 | 12 | 315 | 93 |
| Montréal/Pierre Elliott Trudeau International | 413 | 218 | 544 | 1,047 | 2,827 | 4,817 | 3,727 | 1,305 | 12 | 1,658 |
| Montréal/St-Hubert | 2,472 | 435 | 705 | 109 | 131 | 16 | 12 | 14 | 18 | 0 |
| Oshawa | 1,418 | 93 | 27 | 15 | 0 | 0 | 0 | 2 | 0 | 0 |
| Ottawa/Macdonald-Cartier International | 1,513 | 181 | 808 | 313 | 762 | 2,356 | 1,580 | 830 | 250 | 159 |
| Pitt Meadows | 2,163 | 32 | 6 | 2 | 0 | 2 | 0 | 0 | 0 | 0 |
| Prince George | 360 | 88 | 290 | 563 | 14 | 357 | 159 | 0 | 0 | 0 |
| Québec/Jean Lesage International | 1,688 | 465 | 784 | 165 | 1,293 | 1,139 | 166 | 14 | 62 | 121 |
| Regina International | 600 | 331 | 368 | 293 | 91 | 515 | 676 | 0 | 113 | 48 |
| Saskatoon/John G Diefenbaker International | 770 | 422 | 740 | 579 | 216 | 666 | 723 | 2 | 71 | 49 |
| Sault Ste. Marie | 809 | 128 | 444 | 56 | 88 | 219 | 0 | 3 | 0 | 0 |
| St. John's International | 22 | 27 | 364 | 619 | 619 | 109 | 641 | 185 | 51 | 18 |
| St-Jean | 454 | 54 | 85 | 2 | 2 | 1 | 0 | 0 | 0 | 0 |
| Sudbury | 257 | 319 | 1,027 | 107 | 183 | 161 | 27 | 2 | 0 | 0 |
| Thunder Bay | 718 | 148 | 2,205 | 178 | 154 | 565 | 236 | 17 | 6 | 0 |
| Toronto/Buttonville Municipal | 3,055 | 341 | 416 | 90 | 44 | 24 | 4 | 0 | 0 | 0 |
| Toronto/City Centre | 1,296 | 56 | 414 | 27 | 1 | 830 | 0 | 0 | 0 | 0 |
| Toronto/Lester B Pearson International | 44 | 277 | 267 | 2,254 | 3,422 | 6,714 | 10,055 | 4,171 | 539 | 3,625 |
| Vancouver Harbour | 154 | 2,393 | 1,000 | 0 | 90 | 0 | 0 | 0 | 0 | 0 |
| Vancouver International | 736 | 3,179 | 916 | 2,483 | 2,270 | 3,905 | 4,913 | 1,283 | 627 | 1,976 |
| Victoria International | 2,301 | 904 | 134 | 378 | 1,014 | 817 | 463 | 13 | 56 | 11 |
| Whitehorse International | 240 | 72 | 111 | 50 | 24 | 261 | 128 | 10 | 2 | 0 |
| Windsor | 505 | 238 | 52 | 94 | 327 | 92 | 17 | 2 | 16 | 20 |
| Winnipeg/James Armstrong Richardson International | 755 | 465 | 2,883 | 297 | 821 | 1,156 | 2,251 | 399 | 770 | 34 |
| Winnipeg/St. Andrews | 1,587 | 409 | 95 | 0 | 16 | 0 | 0 | 0 | 0 | 0 |
| Yellowknife | 247 | 422 | 922 | 210 | 197 | 810 | 564 | 69 | 4 | 0 |
| Total of NAV CANADA towers (42) | 51,111 | 15,698 | 22,535 | 17,159 | 18,491 | 34,577 | 39,424 | 10,170 | 4,748 | 8,706 |

Table 6-2
Itinerant movements by aircraft weight group — NAV CANADA flight service stations

| | Gross take-off weight in kilograms | | | | | | | | | |
|--|------------------------------------|-------------------|-------------------|-------------------|--------------------|---------------------|---------------------|---------------------|----------------------|---------------------|
| | 2 000 and under | 2 001 to 4 000 | 4 001 to 5 670 | 5 671 to 9 000 | 9 001 to 18 000 | 18 001 to 35 000 | 35 001 to 70 000 | 70 001 to 90 000 | 90 001 to 136 000 | 136 001 and over |
| | number | | | | | | | | | |
| Brandon Municipal | 150 | 26 | 180 | 16 | 10 | 0 | 0 | 2 | 0 | 0 |
| Campbell River | 399 | 58 | 34 | 393 | 212 | 26 | 2 | 0 | 0 | 0 |
| Castlegar | 74 | 9 | 20 | 75 | 63 | 82 | 0 | 0 | 0 | 0 |
| Charlottetown | 271 | 243 | 59 | 110 | 131 | 102 | 38 | 0 | 2 | 0 |
| Churchill | 17 | 6 | 136 | 22 | 232 | 161 | 0 | 6 | 0 | 0 |
| Cranbrook | 108 | 59 | 72 | 317 | 86 | 92 | 2 | 2 | 0 | 0 |
| Dawson Creek | 59 | 46 | 196 | 120 | 117 | 0 | 0 | 0 | 0 | 0 |
| Deer Lake | 27 | 22 | 130 | 40 | 712 | 119 | 81 | 0 | 0 | 0 |
| Fort McMurray | 741 | 450 | 477 | 605 | 268 | 426 | 272 | 0 | 0 | 0 |
| Fort Nelson | 170 | 198 | 232 | 168 | 91 | 2 | 0 | 0 | 0 | 0 |
| Fort St John | 418 | 91 | 387 | 315 | 105 | 214 | 0 | 0 | 0 | 0 |
| Fredericton | 536 | 143 | 234 | 111 | 68 | 411 | 18 | 10 | 0 | 22 |
| Grande Prairie | 394 | 242 | 563 | 432 | 10 | 343 | 113 | 0 | 0 | 0 |
| High Level | 81 | 60 | 288 | 242 | 0 | 0 | 0 | 0 | 0 | 0 |
| Îles-de-la-Madeleine | 2 | 169 | 108 | 6 | 138 | 9 | 0 | 0 | 0 | 0 |
| Inuvik/Mike Zubko | 59 | 17 | 443 | 6 | 8 | 26 | 113 | 8 | 0 | 0 |
| Iqaluit | 5 | 0 | 356 | 47 | 40 | 309 | 143 | 13 | 98 | 3 |
| Kamloops | 376 | 186 | 117 | 287 | 33 | 511 | 1 | 0 | 0 | 0 |
| Kenora | 171 | 14 | 444 | 2 | 12 | 0 | 0 | 6 | 0 | 0 |
| Kingston | 672 | 60 | 111 | 404 | 48 | 8 | 0 | 12 | 0 | 0 |
| Kuujuuaq | 10 | 0 | 431 | 0 | 84 | 73 | 76 | 0 | 36 | 0 |
| Kuujuuarapik | 6 | 0 | 57 | 0 | 153 | 95 | 0 | 0 | 0 | 0 |
| La Grande Rivière | 6 | 14 | 38 | 12 | 125 | 404 | 4 | 10 | 0 | 0 |
| La Ronge | 91 | 335 | 380 | 98 | 185 | 176 | 0 | 0 | 0 | 0 |
| Lethbridge | 494 | 95 | 145 | 389 | 30 | 0 | 17 | 1 | 0 | 0 |
| Lloydminster | 319 | 132 | 86 | 139 | 4 | 0 | 0 | 0 | 0 | 0 |
| Medicine Hat | 220 | 105 | 283 | 289 | 21 | 10 | 0 | 0 | 0 | 0 |
| Mont-Joli | 9 | 5 | 129 | 0 | 79 | 23 | 0 | 0 | 0 | 0 |
| Nanaimo | 635 | 324 | 59 | 94 | 84 | 225 | 0 | 1 | 0 | 0 |
| Norman Wells | 162 | 123 | 222 | 8 | 4 | 14 | 136 | 0 | 0 | 0 |
| North Bay | 1,030 | 161 | 348 | 81 | 155 | 59 | 2 | 10 | 0 | 0 |
| Ottawa/Gatineau | 638 | 94 | 183 | 2 | 1 | 4 | 0 | 0 | 0 | 0 |
| Peace River | 122 | 139 | 481 | 119 | 9 | 0 | 0 | 0 | 0 | 0 |
| Penticton | 482 | 31 | 35 | 125 | 84 | 85 | 0 | 0 | 0 | 0 |
| Port Hardy | 57 | 123 | 208 | 59 | 129 | 16 | 2 | 0 | 0 | 0 |
| Prince Albert | 79 | 83 | 222 | 330 | 193 | 294 | 0 | 0 | 0 | 0 |
| Prince Rupert | 18 | 29 | 32 | 12 | 36 | 109 | 1 | 0 | 0 | 0 |
| Rankin Inlet | 6 | 16 | 235 | 98 | 206 | 22 | 103 | 0 | 0 | 0 |
| Red Deer Regional | 798 | 181 | 317 | 216 | 31 | 0 | 1 | 0 | 0 | 0 |
| Rouyn-Noranda | 36 | 4 | 244 | 6 | 149 | 193 | 47 | 1 | 0 | 0 |
| Saint John | 297 | 187 | 170 | 203 | 241 | 225 | 22 | 0 | 0 | 0 |
| Sept-Îles | 193 | 225 | 355 | 161 | 528 | 82 | 0 | 2 | 0 | 0 |
| Sioux Lookout | 77 | 102 | 1,721 | 421 | 0 | 0 | 0 | 0 | 0 | 0 |
| Smithers | 107 | 2 | 61 | 230 | 2 | 108 | 0 | 0 | 0 | 0 |
| St Anthony | 0 | 78 | 247 | 15 | 35 | 2 | 0 | 0 | 0 | 0 |
| St Catharines | 426 | 40 | 17 | 6 | 0 | 4 | 0 | 0 | 0 | 0 |
| Terrace | 219 | 6 | 85 | 199 | 134 | 165 | 0 | 0 | 0 | 0 |
| Thompson | 260 | 524 | 1,137 | 17 | 313 | 135 | 0 | 6 | 0 | 0 |
| Timmins | 140 | 294 | 782 | 151 | 362 | 234 | 0 | 8 | 0 | 0 |
| Val-D'or | 99 | 17 | 255 | 20 | 271 | 56 | 2 | 0 | 56 | 0 |
| Victoria Harbour | 110 | 1,347 | 1,004 | 0 | 155 | 0 | 0 | 0 | 0 | 0 |
| Wabush | 6 | 32 | 51 | 41 | 351 | 40 | 0 | 0 | 0 | 0 |
| Whitecourt | 612 | 96 | 57 | 24 | 2 | 0 | 2 | 0 | 0 | 0 |
| Williams Lake | 78 | 68 | 64 | 306 | 10 | 0 | 0 | 0 | 0 | 0 |
| Total of all flight service stations (54) | 12,572 | 7,111 | 14,728 | 7,589 | 6,550 | 5,694 | 1,198 | 98 | 192 | 25 |

Table 7-1
Itinerant movements, domestic, transborder and international — NAV CANADA towers

| | Total | Air carrier movements | | Other commercial movements | Private movements | Government movements | |
|-------------------------------|---------------|-----------------------------|-----------------|----------------------------|-------------------|----------------------|------------|
| | | Levels I to III and foreign | Levels IV to VI | | | Civil | Military |
| number | | | | | | | |
| Abbotsford | | | | | | | |
| Domestic | 5,516 | 689 | 2,567 | 1,371 | 634 | 234 | 21 |
| Transborder | 51 | 5 | 10 | 1 | 35 | 0 | 0 |
| Other international | 8 | 8 | 0 | 0 | 0 | 0 | 0 |
| Total | 5,575 | 702 | 2,577 | 1,372 | 669 | 234 | 21 |
| Boundary Bay | | | | | | | |
| Domestic | 4,594 | 9 | 711 | 3,039 | 772 | 63 | 0 |
| Transborder | 18 | 0 | 0 | 13 | 5 | 0 | 0 |
| Other international | 0 | 0 | 0 | 0 | 0 | 0 | 0 |
| Total | 4,612 | 9 | 711 | 3,052 | 777 | 63 | 0 |
| Calgary International | | | | | | | |
| Domestic | 14,160 | 11,974 | 793 | 416 | 771 | 125 | 81 |
| Transborder | 3,399 | 3,010 | 97 | 42 | 240 | 5 | 5 |
| Other international | 536 | 528 | 1 | 0 | 5 | 0 | 2 |
| Total | 18,095 | 15,512 | 891 | 458 | 1,016 | 130 | 88 |
| Calgary/Springbank | | | | | | | |
| Domestic | 3,584 | 2 | 662 | 1,930 | 888 | 14 | 88 |
| Transborder | 31 | 0 | 3 | 3 | 25 | 0 | 0 |
| Other international | 0 | 0 | 0 | 0 | 0 | 0 | 0 |
| Total | 3,615 | 2 | 665 | 1,933 | 913 | 14 | 88 |
| Chicoutimi/St-Honoré | | | | | | | |
| Domestic | 1,070 | 20 | 371 | 604 | 72 | 3 | 0 |
| Transborder | 1 | 0 | 0 | 0 | 1 | 0 | 0 |
| Other international | 0 | 0 | 0 | 0 | 0 | 0 | 0 |
| Total | 1,071 | 20 | 371 | 604 | 73 | 3 | 0 |
| Edmonton City Centre | | | | | | | |
| Domestic | 4,938 | 1,693 | 582 | 1,357 | 921 | 321 | 64 |
| Transborder | 40 | 14 | 8 | 0 | 16 | 1 | 1 |
| Other international | 0 | 0 | 0 | 0 | 0 | 0 | 0 |
| Total | 4,978 | 1,707 | 590 | 1,357 | 937 | 322 | 65 |
| Edmonton International | | | | | | | |
| Domestic | 8,660 | 7,795 | 435 | 135 | 168 | 51 | 76 |
| Transborder | 1,140 | 1,087 | 11 | 2 | 39 | 1 | 0 |
| Other international | 174 | 169 | 1 | 0 | 2 | 0 | 2 |
| Total | 9,974 | 9,051 | 447 | 137 | 209 | 52 | 78 |
| Edmonton/Villeneuve | | | | | | | |
| Domestic | 929 | 0 | 212 | 502 | 199 | 16 | 0 |
| Transborder | 0 | 0 | 0 | 0 | 0 | 0 | 0 |
| Other international | 0 | 0 | 0 | 0 | 0 | 0 | 0 |
| Total | 929 | 0 | 212 | 502 | 199 | 16 | 0 |
| Gander International | | | | | | | |
| Domestic | 1,197 | 169 | 844 | 11 | 17 | 48 | 108 |
| Transborder | 187 | 71 | 0 | 12 | 73 | 0 | 31 |
| Other international | 237 | 95 | 5 | 19 | 75 | 0 | 43 |
| Total | 1,621 | 335 | 849 | 42 | 165 | 48 | 182 |
| Halifax International | | | | | | | |
| Domestic | 4,278 | 3,514 | 372 | 39 | 146 | 43 | 164 |
| Transborder | 753 | 640 | 43 | 1 | 51 | 2 | 16 |
| Other international | 481 | 325 | 121 | 3 | 8 | 3 | 21 |
| Total | 5,512 | 4,479 | 536 | 43 | 205 | 48 | 201 |
| Hamilton | | | | | | | |
| Domestic | 2,289 | 1,256 | 681 | 34 | 191 | 126 | 1 |
| Transborder | 489 | 333 | 15 | 4 | 134 | 2 | 1 |
| Other international | 47 | 45 | 0 | 0 | 2 | 0 | 0 |
| Total | 2,825 | 1,634 | 696 | 38 | 327 | 128 | 2 |

Table 7-1 – continued

Itinerant movements, domestic, transborder and international — NAV CANADA towers

| | Total | Air carrier movements | | Other commercial movements | Private movements | Government movements | |
|--|---------------|-----------------------------|-----------------|----------------------------|-------------------|----------------------|------------|
| | | Levels I to III and foreign | Levels IV to VI | | | Civil | Military |
| | number | | | | | | |
| Kelowna | | | | | | | |
| Domestic | 3,167 | 2,034 | 254 | 590 | 187 | 87 | 15 |
| Transborder | 319 | 229 | 14 | 4 | 72 | 0 | 0 |
| Other international | 36 | 36 | 0 | 0 | 0 | 0 | 0 |
| Total | 3,522 | 2,299 | 268 | 594 | 259 | 87 | 15 |
| Kitchener/Waterloo | | | | | | | |
| Domestic | 1,856 | 62 | 1,091 | 384 | 283 | 6 | 30 |
| Transborder | 346 | 208 | 32 | 2 | 104 | 0 | 0 |
| Other international | 35 | 32 | 2 | 0 | 1 | 0 | 0 |
| Total | 2,237 | 302 | 1,125 | 386 | 388 | 6 | 30 |
| Langley | | | | | | | |
| Domestic | 1,837 | 97 | 198 | 860 | 668 | 12 | 2 |
| Transborder | 4 | 0 | 0 | 0 | 4 | 0 | 0 |
| Other international | 0 | 0 | 0 | 0 | 0 | 0 | 0 |
| Total | 1,841 | 97 | 198 | 860 | 672 | 12 | 2 |
| London | | | | | | | |
| Domestic | 2,820 | 752 | 405 | 936 | 630 | 79 | 18 |
| Transborder | 330 | 238 | 2 | 2 | 87 | 0 | 1 |
| Other international | 22 | 18 | 1 | 0 | 3 | 0 | 0 |
| Total | 3,172 | 1,008 | 408 | 938 | 720 | 79 | 19 |
| Moncton/Greater Moncton International | | | | | | | |
| Domestic | 4,795 | 4,399 | 42 | 18 | 132 | 148 | 56 |
| Transborder | 77 | 65 | 1 | 1 | 7 | 3 | 0 |
| Other international | 8 | 7 | 0 | 0 | 1 | 0 | 0 |
| Total | 4,880 | 4,471 | 43 | 19 | 140 | 151 | 56 |
| Montréal/Mirabel International | | | | | | | |
| Domestic | 1,038 | 594 | 141 | 28 | 198 | 37 | 40 |
| Transborder | 190 | 188 | 0 | 0 | 2 | 0 | 0 |
| Other international | 3 | 1 | 0 | 2 | 0 | 0 | 0 |
| Total | 1,231 | 783 | 141 | 30 | 200 | 37 | 40 |
| Montréal/Pierre Elliott Trudeau International | | | | | | | |
| Domestic | 9,185 | 7,626 | 545 | 212 | 620 | 164 | 18 |
| Transborder | 5,494 | 4,900 | 41 | 79 | 472 | 1 | 1 |
| Other international | 1,889 | 1,777 | 26 | 15 | 67 | 0 | 4 |
| Total | 16,568 | 14,303 | 612 | 306 | 1,159 | 165 | 23 |
| Montréal/St-Hubert | | | | | | | |
| Domestic | 3,748 | 1,659 | 264 | 867 | 728 | 119 | 111 |
| Transborder | 163 | 21 | 3 | 0 | 137 | 1 | 1 |
| Other international | 1 | 0 | 1 | 0 | 0 | 0 | 0 |
| Total | 3,912 | 1,680 | 268 | 867 | 865 | 120 | 112 |
| Oshawa | | | | | | | |
| Domestic | 1,535 | 105 | 103 | 1,016 | 306 | 3 | 2 |
| Transborder | 20 | 7 | 0 | 3 | 10 | 0 | 0 |
| Other international | 0 | 0 | 0 | 0 | 0 | 0 | 0 |
| Total | 1,555 | 112 | 103 | 1,019 | 316 | 3 | 2 |
| Ottawa/Macdonald-Cartier International | | | | | | | |
| Domestic | 6,589 | 4,159 | 383 | 1,182 | 268 | 489 | 108 |
| Transborder | 1,879 | 1,764 | 13 | 7 | 80 | 4 | 11 |
| Other international | 284 | 266 | 6 | 3 | 8 | 0 | 1 |
| Total | 8,752 | 6,189 | 402 | 1,192 | 356 | 493 | 120 |
| Pitt Meadows | | | | | | | |
| Domestic | 2,201 | 24 | 703 | 712 | 753 | 9 | 0 |
| Transborder | 4 | 0 | 1 | 0 | 3 | 0 | 0 |
| Other international | 0 | 0 | 0 | 0 | 0 | 0 | 0 |
| Total | 2,205 | 24 | 704 | 712 | 756 | 9 | 0 |

Table 7-1 – continued

Itinerant movements, domestic, transborder and international — NAV CANADA towers

| | Total | Air carrier movements | | Other commercial movements | Private movements | Government movements | |
|---|--------------|-----------------------------|-----------------|----------------------------|-------------------|----------------------|------------|
| | | Levels I to III and foreign | Levels IV to VI | | | Civil | Military |
| number | | | | | | | |
| Prince George | | | | | | | |
| Domestic | 1,791 | 1,173 | 240 | 116 | 157 | 99 | 6 |
| Transborder | 31 | 0 | 0 | 0 | 31 | 0 | 0 |
| Other international | 9 | 8 | 0 | 0 | 1 | 0 | 0 |
| Total | 1,831 | 1,181 | 240 | 116 | 189 | 99 | 6 |
| Québec/Jean Lesage International | | | | | | | |
| Domestic | 5,274 | 2,906 | 623 | 929 | 491 | 204 | 121 |
| Transborder | 416 | 345 | 0 | 9 | 58 | 2 | 2 |
| Other international | 207 | 204 | 0 | 0 | 3 | 0 | 0 |
| Total | 5,897 | 3,455 | 623 | 938 | 552 | 206 | 123 |
| Regina International | | | | | | | |
| Domestic | 2,818 | 1,744 | 524 | 21 | 115 | 187 | 227 |
| Transborder | 149 | 118 | 1 | 1 | 24 | 2 | 3 |
| Other international | 68 | 68 | 0 | 0 | 0 | 0 | 0 |
| Total | 3,035 | 1,930 | 525 | 22 | 139 | 189 | 230 |
| Saskatoon/John G Diefenbaker International | | | | | | | |
| Domestic | 4,096 | 2,602 | 740 | 167 | 156 | 301 | 130 |
| Transborder | 89 | 69 | 2 | 1 | 17 | 0 | 0 |
| Other international | 53 | 52 | 0 | 1 | 0 | 0 | 0 |
| Total | 4,238 | 2,723 | 742 | 169 | 173 | 301 | 130 |
| Sault Ste. Marie | | | | | | | |
| Domestic | 1,736 | 725 | 160 | 750 | 60 | 26 | 15 |
| Transborder | 11 | 2 | 1 | 0 | 8 | 0 | 0 |
| Other international | 0 | 0 | 0 | 0 | 0 | 0 | 0 |
| Total | 1,747 | 727 | 161 | 750 | 68 | 26 | 15 |
| St. John's International | | | | | | | |
| Domestic | 2,317 | 949 | 1,148 | 33 | 28 | 122 | 37 |
| Transborder | 145 | 48 | 2 | 3 | 35 | 0 | 57 |
| Other international | 193 | 86 | 2 | 4 | 35 | 0 | 66 |
| Total | 2,655 | 1,083 | 1,152 | 40 | 98 | 122 | 160 |
| St-Jean | | | | | | | |
| Domestic | 598 | 103 | 138 | 151 | 167 | 22 | 17 |
| Transborder | 0 | 0 | 0 | 0 | 0 | 0 | 0 |
| Other international | 0 | 0 | 0 | 0 | 0 | 0 | 0 |
| Total | 598 | 103 | 138 | 151 | 167 | 22 | 17 |
| Sudbury | | | | | | | |
| Domestic | 2,066 | 1,308 | 484 | 48 | 170 | 50 | 6 |
| Transborder | 9 | 3 | 2 | 0 | 4 | 0 | 0 |
| Other international | 8 | 8 | 0 | 0 | 0 | 0 | 0 |
| Total | 2,083 | 1,319 | 486 | 48 | 174 | 50 | 6 |
| Thunder Bay | | | | | | | |
| Domestic | 4,078 | 2,298 | 1,011 | 595 | 67 | 84 | 23 |
| Transborder | 132 | 117 | 5 | 1 | 9 | 0 | 0 |
| Other international | 17 | 16 | 1 | 0 | 0 | 0 | 0 |
| Total | 4,227 | 2,431 | 1,017 | 596 | 76 | 84 | 23 |
| Toronto/Buttonville Municipal | | | | | | | |
| Domestic | 3,723 | 360 | 508 | 1,853 | 953 | 47 | 2 |
| Transborder | 250 | 80 | 31 | 0 | 139 | 0 | 0 |
| Other international | 1 | 0 | 0 | 0 | 1 | 0 | 0 |
| Total | 3,974 | 440 | 539 | 1,853 | 1,093 | 47 | 2 |
| Toronto/City Centre | | | | | | | |
| Domestic | 2,560 | 977 | 534 | 903 | 115 | 26 | 5 |
| Transborder | 64 | 2 | 13 | 0 | 47 | 0 | 2 |
| Other international | 0 | 0 | 0 | 0 | 0 | 0 | 0 |
| Total | 2,624 | 979 | 547 | 903 | 162 | 26 | 7 |

Table 7-1 – continued

Itinerant movements, domestic, transborder and international — NAV CANADA towers

| | Total | Air carrier movements | | Other commercial movements | Private movements | Government movements | |
|--|----------------|-----------------------------|-----------------|----------------------------|-------------------|----------------------|--------------|
| | | Levels I to III and foreign | Levels IV to VI | | | Civil | Military |
| number | | | | | | | |
| Toronto/Lester B Pearson International | | | | | | | |
| Domestic | 13,324 | 12,538 | 289 | 70 | 389 | 26 | 12 |
| Transborder | 13,991 | 13,144 | 92 | 85 | 670 | 0 | 0 |
| Other international | 4,053 | 3,974 | 24 | 25 | 30 | 0 | 0 |
| Total | 31,368 | 29,656 | 405 | 180 | 1,089 | 26 | 12 |
| Vancouver Harbour | | | | | | | |
| Domestic | 3,616 | 3,268 | 289 | 11 | 48 | 0 | 0 |
| Transborder | 21 | 16 | 5 | 0 | 0 | 0 | 0 |
| Other international | 0 | 0 | 0 | 0 | 0 | 0 | 0 |
| Total | 3,637 | 3,284 | 294 | 11 | 48 | 0 | 0 |
| Vancouver International | | | | | | | |
| Domestic | 16,107 | 14,015 | 1,062 | 191 | 578 | 241 | 20 |
| Transborder | 4,769 | 4,435 | 11 | 9 | 310 | 0 | 4 |
| Other international | 1,412 | 1,318 | 77 | 3 | 11 | 3 | 0 |
| Total | 22,288 | 19,768 | 1,150 | 203 | 899 | 244 | 24 |
| Victoria International | | | | | | | |
| Domestic | 5,379 | 2,404 | 1,656 | 447 | 771 | 50 | 51 |
| Transborder | 625 | 409 | 35 | .. | 176 | 0 | 4 |
| Other international | 87 | 36 | 20 | 11 | 19 | 0 | 1 |
| Total | 6,091 | 2,849 | 1,711 | .. | 966 | 50 | 56 |
| Whitehorse International | | | | | | | |
| Domestic | 865 | 508 | 166 | 4 | 95 | 40 | 52 |
| Transborder | 33 | 1 | 2 | 0 | 20 | 0 | 10 |
| Other international | 0 | 0 | 0 | 0 | 0 | 0 | 0 |
| Total | 898 | 509 | 168 | 4 | 115 | 40 | 62 |
| Windsor | | | | | | | |
| Domestic | 1,179 | 585 | 474 | 18 | 84 | 12 | 6 |
| Transborder | 178 | 123 | 28 | 0 | 23 | 0 | 4 |
| Other international | 6 | 1 | 3 | 0 | 2 | 0 | 0 |
| Total | 1,363 | 709 | 505 | 18 | 109 | 12 | 10 |
| Winnipeg/James Armstrong Richardson International | | | | | | | |
| Domestic | 8,569 | 6,882 | 733 | 59 | 155 | 214 | 526 |
| Transborder | 1,069 | 975 | 22 | 1 | 54 | 2 | 15 |
| Other international | 193 | 187 | 1 | 0 | 1 | 0 | 4 |
| Total | 9,831 | 8,044 | 756 | 60 | 210 | 216 | 545 |
| Winnipeg/St. Andrews | | | | | | | |
| Domestic | 2,106 | 379 | 1,151 | 387 | 149 | 18 | 22 |
| Transborder | 1 | 0 | 0 | 0 | 1 | 0 | 0 |
| Other international | 0 | 0 | 0 | 0 | 0 | 0 | 0 |
| Total | 2,107 | 379 | 1,151 | 387 | 150 | 18 | 22 |
| Yellowknife | | | | | | | |
| Domestic | 3,442 | 2,881 | 345 | 51 | 27 | 64 | 74 |
| Transborder | 3 | 3 | 0 | 0 | 0 | 0 | 0 |
| Other international | 0 | 0 | 0 | 0 | 0 | 0 | 0 |
| Total | 3,445 | 2,884 | 345 | 51 | 27 | 64 | 74 |
| Total of NAV CANADA towers (42) | | | | | | | |
| Domestic | 175,630 | 107,237 | 24,634 | 23,047 | 14,327 | 4,030 | 2,355 |
| Transborder | 36,921 | 32,670 | 546 | 287 | 3,223 | 26 | 169 |
| Other international | 10,068 | 9,265 | 292 | 86 | 275 | 6 | 144 |
| Total | 222,619 | 149,172 | 25,472 | 23,420 | 17,825 | 4,062 | 2,668 |

Table 7-2
Itinerant movements, domestic, transborder and international — NAV CANADA flight service stations

| | Total | Air carrier movements | | Other commercial movements | Private movements | Government movements | |
|--------------------------|--------------|-----------------------------|-----------------|----------------------------|-------------------|----------------------|-----------|
| | | Levels I to III and foreign | Levels IV to VI | | | Civil | Military |
| number | | | | | | | |
| Brandon Municipal | | | | | | | |
| Domestic | 378 | 117 | 86 | 17 | 50 | 21 | 87 |
| Transborder | 6 | 1 | 0 | 0 | 3 | 0 | 2 |
| Other international | 0 | 0 | 0 | 0 | 0 | 0 | 0 |
| Total | 384 | 118 | 86 | 17 | 53 | 21 | 89 |
| Campbell River | | | | | | | |
| Domestic | 1,098 | 540 | 235 | 60 | 237 | 14 | 12 |
| Transborder | 26 | 2 | 1 | 0 | 23 | 0 | 0 |
| Other international | 0 | 0 | 0 | 0 | 0 | 0 | 0 |
| Total | 1,124 | 542 | 236 | 60 | 260 | 14 | 12 |
| Castlegar | | | | | | | |
| Domestic | 314 | 207 | 42 | 41 | 20 | 2 | 2 |
| Transborder | 9 | 2 | 0 | 0 | 6 | 0 | 1 |
| Other international | 0 | 0 | 0 | 0 | 0 | 0 | 0 |
| Total | 323 | 209 | 42 | 41 | 26 | 2 | 3 |
| Charlottetown | | | | | | | |
| Domestic | 954 | 595 | 44 | 112 | 98 | 83 | 22 |
| Transborder | 1 | 0 | 0 | 0 | 1 | 0 | 0 |
| Other international | 1 | 1 | 0 | 0 | 0 | 0 | 0 |
| Total | 956 | 596 | 44 | 112 | 99 | 83 | 22 |
| Churchill | | | | | | | |
| Domestic | 580 | 559 | 17 | 4 | 0 | 0 | 0 |
| Transborder | 0 | 0 | 0 | 0 | 0 | 0 | 0 |
| Other international | 0 | 0 | 0 | 0 | 0 | 0 | 0 |
| Total | 580 | 559 | 17 | 4 | 0 | 0 | 0 |
| Cranbrook | | | | | | | |
| Domestic | 710 | 549 | 15 | 86 | 46 | 2 | 12 |
| Transborder | 28 | 4 | 0 | 0 | 24 | 0 | 0 |
| Other international | 0 | 0 | 0 | 0 | 0 | 0 | 0 |
| Total | 738 | 553 | 15 | 86 | 70 | 2 | 12 |
| Dawson Creek | | | | | | | |
| Domestic | 538 | 287 | 145 | 40 | 28 | 38 | 0 |
| Transborder | 0 | 0 | 0 | 0 | 0 | 0 | 0 |
| Other international | 0 | 0 | 0 | 0 | 0 | 0 | 0 |
| Total | 538 | 287 | 145 | 40 | 28 | 38 | 0 |
| Deer Lake | | | | | | | |
| Domestic | 1,123 | 616 | 422 | 24 | 13 | 42 | 6 |
| Transborder | 0 | 0 | 0 | 0 | 0 | 0 | 0 |
| Other international | 8 | 8 | 0 | 0 | 0 | 0 | 0 |
| Total | 1,131 | 624 | 422 | 24 | 13 | 42 | 6 |
| Fort McMurray | | | | | | | |
| Domestic | 3,235 | 2,023 | 515 | 351 | 298 | 30 | 18 |
| Transborder | 4 | 2 | 1 | 0 | 1 | 0 | 0 |
| Other international | 0 | 0 | 0 | 0 | 0 | 0 | 0 |
| Total | 3,239 | 2,025 | 516 | 351 | 299 | 30 | 18 |
| Fort Nelson | | | | | | | |
| Domestic | 861 | 447 | 222 | 58 | 83 | 26 | 25 |
| Transborder | 0 | 0 | 0 | 0 | 0 | 0 | 0 |
| Other international | 0 | 0 | 0 | 0 | 0 | 0 | 0 |
| Total | 861 | 447 | 222 | 58 | 83 | 26 | 25 |
| Fort St John | | | | | | | |
| Domestic | 1,529 | 944 | 353 | 103 | 82 | 29 | 18 |
| Transborder | 1 | 1 | 0 | 0 | 0 | 0 | 0 |
| Other international | 0 | 0 | 0 | 0 | 0 | 0 | 0 |
| Total | 1,530 | 945 | 353 | 103 | 82 | 29 | 18 |

Table 7-2 – continued

Itinerant movements, domestic, transborder and international — NAV CANADA flight service stations

| | Total | Air carrier movements | | Other commercial movements | Private movements | Government movements | |
|-----------------------------|--------------|-----------------------------|-----------------|----------------------------|-------------------|----------------------|------------|
| | | Levels I to III and foreign | Levels IV to VI | | | Civil | Military |
| number | | | | | | | |
| Fredericton | | | | | | | |
| Domestic | 1,472 | 918 | 187 | 10 | 97 | 71 | 189 |
| Transborder | 65 | 54 | 4 | 0 | 2 | 5 | 0 |
| Other international | 16 | 6 | 0 | 0 | 0 | 0 | 10 |
| Total | 1,553 | 978 | 191 | 10 | 99 | 76 | 199 |
| Grande Prairie | | | | | | | |
| Domestic | 2,097 | 1,448 | 361 | 12 | 260 | 14 | 2 |
| Transborder | 0 | 0 | 0 | 0 | 0 | 0 | 0 |
| Other international | 0 | 0 | 0 | 0 | 0 | 0 | 0 |
| Total | 2,097 | 1,448 | 361 | 12 | 260 | 14 | 2 |
| High Level | | | | | | | |
| Domestic | 671 | 579 | 72 | 2 | 8 | 10 | 0 |
| Transborder | 0 | 0 | 0 | 0 | 0 | 0 | 0 |
| Other international | 0 | 0 | 0 | 0 | 0 | 0 | 0 |
| Total | 671 | 579 | 72 | 2 | 8 | 10 | 0 |
| Îles-de-la-Madeleine | | | | | | | |
| Domestic | 432 | 238 | 138 | 14 | 8 | 34 | 0 |
| Transborder | 0 | 0 | 0 | 0 | 0 | 0 | 0 |
| Other international | 0 | 0 | 0 | 0 | 0 | 0 | 0 |
| Total | 432 | 238 | 138 | 14 | 8 | 34 | 0 |
| Inuvik/Mike Zubko | | | | | | | |
| Domestic | 677 | 218 | 417 | 0 | 6 | 20 | 16 |
| Transborder | 3 | 1 | 0 | 0 | 2 | 0 | 0 |
| Other international | 0 | 0 | 0 | 0 | 0 | 0 | 0 |
| Total | 680 | 219 | 417 | 0 | 8 | 20 | 16 |
| Iqaluit | | | | | | | |
| Domestic | 939 | 841 | 10 | 25 | 20 | 39 | 4 |
| Transborder | 29 | 20 | 4 | 2 | 3 | 0 | 0 |
| Other international | 46 | 18 | 0 | 7 | 17 | 0 | 4 |
| Total | 1,014 | 879 | 14 | 34 | 40 | 39 | 8 |
| Kamloops | | | | | | | |
| Domestic | 1,427 | 787 | 206 | 193 | 167 | 60 | 14 |
| Transborder | 83 | 55 | 2 | 2 | 22 | 0 | 2 |
| Other international | 1 | 0 | 0 | 0 | 1 | 0 | 0 |
| Total | 1,511 | 842 | 208 | 195 | 190 | 60 | 16 |
| Kenora | | | | | | | |
| Domestic | 647 | 368 | 167 | 60 | 20 | 6 | 26 |
| Transborder | 2 | 0 | 0 | 0 | 2 | 0 | 0 |
| Other international | 0 | 0 | 0 | 0 | 0 | 0 | 0 |
| Total | 649 | 368 | 167 | 60 | 22 | 6 | 26 |
| Kingston | | | | | | | |
| Domestic | 1,299 | 454 | 330 | 262 | 192 | 34 | 27 |
| Transborder | 14 | 4 | 2 | 2 | 6 | 0 | 0 |
| Other international | 2 | 1 | 0 | 1 | 0 | 0 | 0 |
| Total | 1,315 | 459 | 332 | 265 | 198 | 34 | 27 |
| Kuujuuaq | | | | | | | |
| Domestic | 710 | 656 | 14 | 0 | 16 | 24 | 0 |
| Transborder | 0 | 0 | 0 | 0 | 0 | 0 | 0 |
| Other international | 0 | 0 | 0 | 0 | 0 | 0 | 0 |
| Total | 710 | 656 | 14 | 0 | 16 | 24 | 0 |
| Kuujuarapik | | | | | | | |
| Domestic | 311 | 301 | 10 | 0 | 0 | 0 | 0 |
| Transborder | 0 | 0 | 0 | 0 | 0 | 0 | 0 |
| Other international | 0 | 0 | 0 | 0 | 0 | 0 | 0 |
| Total | 311 | 301 | 10 | 0 | 0 | 0 | 0 |
| La Grande Rivière | | | | | | | |
| Domestic | 612 | 478 | 98 | 0 | 8 | 10 | 18 |
| Transborder | 1 | 1 | 0 | 0 | 0 | 0 | 0 |
| Other international | 0 | 0 | 0 | 0 | 0 | 0 | 0 |
| Total | 613 | 479 | 98 | 0 | 8 | 10 | 18 |

Table 7-2 – continued

Itinerant movements, domestic, transborder and international — NAV CANADA flight service stations

| | Total | Air carrier movements | | Other commercial movements | Private movements | Government movements | |
|------------------------|--------------|-----------------------------|-----------------|----------------------------|-------------------|----------------------|-----------|
| | | Levels I to III and foreign | Levels IV to VI | | | Civil | Military |
| number | | | | | | | |
| La Ronge | | | | | | | |
| Domestic | 1,264 | 1,142 | 14 | 31 | 11 | 55 | 11 |
| Transborder | 1 | 1 | 0 | 0 | 0 | 0 | 0 |
| Other international | 0 | 0 | 0 | 0 | 0 | 0 | 0 |
| Total | 1,265 | 1,143 | 14 | 31 | 11 | 55 | 11 |
| Lethbridge | | | | | | | |
| Domestic | 1,117 | 497 | 25 | 286 | 247 | 19 | 43 |
| Transborder | 46 | 7 | 2 | 1 | 35 | 0 | 1 |
| Other international | 8 | 8 | 0 | 0 | 0 | 0 | 0 |
| Total | 1,171 | 512 | 27 | 287 | 282 | 19 | 44 |
| Lloydminster | | | | | | | |
| Domestic | 680 | 201 | 269 | 14 | 170 | 12 | 14 |
| Transborder | 0 | 0 | 0 | 0 | 0 | 0 | 0 |
| Other international | 0 | 0 | 0 | 0 | 0 | 0 | 0 |
| Total | 680 | 201 | 269 | 14 | 170 | 12 | 14 |
| Medicine Hat | | | | | | | |
| Domestic | 919 | 660 | 62 | 37 | 130 | 12 | 18 |
| Transborder | 9 | 3 | 0 | 0 | 4 | 0 | 2 |
| Other international | 0 | 0 | 0 | 0 | 0 | 0 | 0 |
| Total | 928 | 663 | 62 | 37 | 134 | 12 | 20 |
| Mont-Joli | | | | | | | |
| Domestic | 245 | 224 | 2 | 1 | 12 | 6 | 0 |
| Transborder | 0 | 0 | 0 | 0 | 0 | 0 | 0 |
| Other international | 0 | 0 | 0 | 0 | 0 | 0 | 0 |
| Total | 245 | 224 | 2 | 1 | 12 | 6 | 0 |
| Nanaimo | | | | | | | |
| Domestic | 1,393 | 422 | 304 | 198 | 435 | 26 | 8 |
| Transborder | 29 | 2 | 2 | 0 | 25 | 0 | 0 |
| Other international | 0 | 0 | 0 | 0 | 0 | 0 | 0 |
| Total | 1,422 | 424 | 306 | 198 | 460 | 26 | 8 |
| Norman Wells | | | | | | | |
| Domestic | 669 | 525 | 114 | 0 | 10 | 13 | 7 |
| Transborder | 0 | 0 | 0 | 0 | 0 | 0 | 0 |
| Other international | 0 | 0 | 0 | 0 | 0 | 0 | 0 |
| Total | 669 | 525 | 114 | 0 | 10 | 13 | 7 |
| North Bay | | | | | | | |
| Domestic | 1,837 | 571 | 583 | 464 | 161 | 38 | 20 |
| Transborder | 9 | 1 | 2 | 0 | 6 | 0 | 0 |
| Other international | 0 | 0 | 0 | 0 | 0 | 0 | 0 |
| Total | 1,846 | 572 | 585 | 464 | 167 | 38 | 20 |
| Ottawa/Gatineau | | | | | | | |
| Domestic | 918 | 122 | 204 | 117 | 341 | 72 | 62 |
| Transborder | 4 | 0 | 0 | 0 | 4 | 0 | 0 |
| Other international | 0 | 0 | 0 | 0 | 0 | 0 | 0 |
| Total | 922 | 122 | 204 | 117 | 345 | 72 | 62 |
| Peace River | | | | | | | |
| Domestic | 870 | 666 | 120 | 13 | 39 | 18 | 14 |
| Transborder | 0 | 0 | 0 | 0 | 0 | 0 | 0 |
| Other international | 0 | 0 | 0 | 0 | 0 | 0 | 0 |
| Total | 870 | 666 | 120 | 13 | 39 | 18 | 14 |
| Penticton | | | | | | | |
| Domestic | 817 | 283 | 382 | 42 | 80 | 6 | 24 |
| Transborder | 25 | 6 | 1 | 2 | 16 | 0 | 0 |
| Other international | 0 | 0 | 0 | 0 | 0 | 0 | 0 |
| Total | 842 | 289 | 383 | 44 | 96 | 6 | 24 |

Table 7-2 – continued

Itinerant movements, domestic, transborder and international — NAV CANADA flight service stations

| | Total | Air carrier movements | | Other commercial movements | Private movements | Government movements | |
|--------------------------|--------------|-----------------------------|-----------------|----------------------------|-------------------|----------------------|-----------|
| | | Levels I to III and foreign | Levels IV to VI | | | Civil | Military |
| number | | | | | | | |
| Port Hardy | | | | | | | |
| Domestic | 590 | 419 | 71 | 7 | 24 | 47 | 22 |
| Transborder | 4 | 0 | 0 | 0 | 2 | 0 | 2 |
| Other international | 0 | 0 | 0 | 0 | 0 | 0 | 0 |
| Total | 594 | 419 | 71 | 7 | 26 | 47 | 24 |
| Prince Albert | | | | | | | |
| Domestic | 1,201 | 940 | 83 | 7 | 43 | 110 | 18 |
| Transborder | 0 | 0 | 0 | 0 | 0 | 0 | 0 |
| Other international | 0 | 0 | 0 | 0 | 0 | 0 | 0 |
| Total | 1,201 | 940 | 83 | 7 | 43 | 110 | 18 |
| Prince Rupert | | | | | | | |
| Domestic | 229 | 158 | 45 | 2 | 4 | 18 | 2 |
| Transborder | 8 | 0 | 0 | 0 | 6 | 0 | 2 |
| Other international | 0 | 0 | 0 | 0 | 0 | 0 | 0 |
| Total | 237 | 158 | 45 | 2 | 10 | 18 | 4 |
| Rankin Inlet | | | | | | | |
| Domestic | 686 | 670 | 6 | 0 | 4 | 6 | 0 |
| Transborder | 0 | 0 | 0 | 0 | 0 | 0 | 0 |
| Other international | 0 | 0 | 0 | 0 | 0 | 0 | 0 |
| Total | 686 | 670 | 6 | 0 | 4 | 6 | 0 |
| Red Deer Regional | | | | | | | |
| Domestic | 1,538 | 466 | 560 | 118 | 347 | 22 | 25 |
| Transborder | 6 | 0 | 2 | 0 | 4 | 0 | 0 |
| Other international | 0 | 0 | 0 | 0 | 0 | 0 | 0 |
| Total | 1,544 | 466 | 562 | 118 | 351 | 22 | 25 |
| Rouyn-Noranda | | | | | | | |
| Domestic | 678 | 471 | 121 | 2 | 68 | 16 | 0 |
| Transborder | 2 | 2 | 0 | 0 | 0 | 0 | 0 |
| Other international | 0 | 0 | 0 | 0 | 0 | 0 | 0 |
| Total | 680 | 473 | 121 | 2 | 68 | 16 | 0 |
| Saint John | | | | | | | |
| Domestic | 1,283 | 781 | 65 | 121 | 218 | 8 | 90 |
| Transborder | 59 | 0 | 0 | 0 | 58 | 1 | 0 |
| Other international | 3 | 0 | 1 | 0 | 2 | 0 | 0 |
| Total | 1,345 | 781 | 66 | 121 | 278 | 9 | 90 |
| Sept-Îles | | | | | | | |
| Domestic | 1,534 | 1,059 | 330 | 20 | 64 | 60 | 1 |
| Transborder | 10 | 2 | 0 | 0 | 8 | 0 | 0 |
| Other international | 2 | 2 | 0 | 0 | 0 | 0 | 0 |
| Total | 1,546 | 1,063 | 330 | 20 | 72 | 60 | 1 |
| Sioux Lookout | | | | | | | |
| Domestic | 2,321 | 1,439 | 764 | 48 | 29 | 41 | 0 |
| Transborder | 0 | 0 | 0 | 0 | 0 | 0 | 0 |
| Other international | 0 | 0 | 0 | 0 | 0 | 0 | 0 |
| Total | 2,321 | 1,439 | 764 | 48 | 29 | 41 | 0 |
| Smithers | | | | | | | |
| Domestic | 509 | 348 | 97 | 0 | 48 | 16 | 0 |
| Transborder | 1 | 0 | 0 | 0 | 1 | 0 | 0 |
| Other international | 0 | 0 | 0 | 0 | 0 | 0 | 0 |
| Total | 510 | 348 | 97 | 0 | 49 | 16 | 0 |
| St Anthony | | | | | | | |
| Domestic | 375 | 119 | 192 | 39 | 0 | 25 | 0 |
| Transborder | 0 | 0 | 0 | 0 | 0 | 0 | 0 |
| Other international | 2 | 0 | 2 | 0 | 0 | 0 | 0 |
| Total | 377 | 119 | 194 | 39 | 0 | 25 | 0 |

Table 7-2 – continued

Itinerant movements, domestic, transborder and international — NAV CANADA flight service stations

| | Total | Air carrier movements | | Other commercial movements | Private movements | Government movements | |
|--|---------------|-----------------------------|-----------------|----------------------------|-------------------|----------------------|------------|
| | | Levels I to III and foreign | Levels IV to VI | | | Civil | Military |
| number | | | | | | | |
| St Catharines | | | | | | | |
| Domestic | 481 | 4 | 281 | 31 | 104 | 20 | 41 |
| Transborder | 12 | 0 | 0 | 1 | 11 | 0 | 0 |
| Other international | 0 | 0 | 0 | 0 | 0 | 0 | 0 |
| Total | 493 | 4 | 281 | 32 | 115 | 20 | 41 |
| Terrace | | | | | | | |
| Domestic | 807 | 511 | 254 | 0 | 12 | 28 | 2 |
| Transborder | 1 | 1 | 0 | 0 | 0 | 0 | 0 |
| Other international | 0 | 0 | 0 | 0 | 0 | 0 | 0 |
| Total | 808 | 512 | 254 | 0 | 12 | 28 | 2 |
| Thompson | | | | | | | |
| Domestic | 2,392 | 1,730 | 507 | 9 | 17 | 123 | 6 |
| Transborder | 0 | 0 | 0 | 0 | 0 | 0 | 0 |
| Other international | 0 | 0 | 0 | 0 | 0 | 0 | 0 |
| Total | 2,392 | 1,730 | 507 | 9 | 17 | 123 | 6 |
| Timmins | | | | | | | |
| Domestic | 1,965 | 1,647 | 146 | 14 | 130 | 20 | 8 |
| Transborder | 6 | 2 | 0 | 0 | 4 | 0 | 0 |
| Other international | 0 | 0 | 0 | 0 | 0 | 0 | 0 |
| Total | 1,971 | 1,649 | 146 | 14 | 134 | 20 | 8 |
| Val-D'or | | | | | | | |
| Domestic | 775 | 646 | 31 | 0 | 74 | 16 | 8 |
| Transborder | 1 | 1 | 0 | 0 | 0 | 0 | 0 |
| Other international | 0 | 0 | 0 | 0 | 0 | 0 | 0 |
| Total | 776 | 647 | 31 | 0 | 74 | 16 | 8 |
| Victoria Harbour | | | | | | | |
| Domestic | 2,453 | 2,324 | 48 | 0 | 6 | 73 | 2 |
| Transborder | 163 | 1 | 0 | 0 | 162 | 0 | 0 |
| Other international | 0 | 0 | 0 | 0 | 0 | 0 | 0 |
| Total | 2,616 | 2,325 | 48 | 0 | 168 | 73 | 2 |
| Wabush | | | | | | | |
| Domestic | 520 | 286 | 204 | 6 | 18 | 6 | 0 |
| Transborder | 0 | 0 | 0 | 0 | 0 | 0 | 0 |
| Other international | 1 | 1 | 0 | 0 | 0 | 0 | 0 |
| Total | 521 | 287 | 204 | 6 | 18 | 6 | 0 |
| Whitecourt | | | | | | | |
| Domestic | 792 | 71 | 517 | 156 | 42 | 6 | 0 |
| Transborder | 1 | 1 | 0 | 0 | 0 | 0 | 0 |
| Other international | 0 | 0 | 0 | 0 | 0 | 0 | 0 |
| Total | 793 | 72 | 517 | 156 | 42 | 6 | 0 |
| Williams Lake | | | | | | | |
| Domestic | 524 | 326 | 87 | 24 | 59 | 24 | 4 |
| Transborder | 2 | 0 | 1 | 0 | 1 | 0 | 0 |
| Other international | 0 | 0 | 0 | 0 | 0 | 0 | 0 |
| Total | 526 | 326 | 88 | 24 | 60 | 24 | 4 |
| Total of all flight service stations (54) | | | | | | | |
| Domestic | 54,996 | 33,898 | 10,594 | 3,281 | 4,704 | 1,571 | 948 |
| Transborder | 671 | 177 | 24 | 10 | 442 | 6 | 12 |
| Other international | 90 | 45 | 3 | 8 | 20 | 0 | 14 |
| Total | 55,757 | 34,120 | 10,621 | 3,299 | 5,166 | 1,577 | 974 |

Table 8-1
Total aircraft movements, peak hour and peak day — NAV CANADA towers

| | Rank of movements | Number of movements | Peak hour occurrence | | | Peak day occurrence | |
|---|-------------------|---------------------|----------------------|-------------|---------------------|---------------------|---------------------|
| | | | Day in month | Hour in day | Number of movements | Day in month | Number of movements |
| Abbotsford | 5 | 15,283 | 7 | 11 | 148 | 9 | 902 |
| Boundary Bay | 6 | 12,036 | 8 | 15 | 118 | 10 | 730 |
| Calgary International | 3 | 18,201 | 14 | 18 | 62 | 15 | 790 |
| Calgary/Springbank | 11 | 9,457 | 3 | 13 | 104 | 3 | 864 |
| Chicoutimi/St-Honoré | 39 | 2,001 | 28 | 13 | 51 | 28 | 284 |
| Edmonton City Centre | 18 | 6,211 | 2 | 17 | 36 | 2 | 311 |
| Edmonton International | 10 | 10,389 | 15 | 8 | 47 | 1 | 469 |
| Edmonton/Villeneuve | 29 | 4,005 | 13 | 15 | 75 | 28 | 337 |
| Gander International | 35 | 2,769 | 9 | 18 | 42 | 22 | 302 |
| Halifax International | 20 | 6,056 | 23 | 14 | 39 | 13 | 303 |
| Hamilton | 27 | 4,419 | 10 | 10 | 61 | 28 | 308 |
| Kelowna | 21 | 5,799 | 15 | 17 | 71 | 16 | 382 |
| Kitchener/Waterloo | 23 | 5,025 | 24 | 12 | 82 | 24 | 563 |
| Langley | 30 | 3,987 | 3 | 13 | 81 | 10 | 372 |
| London | 22 | 5,634 | 21 | 15 | 82 | 23 | 473 |
| Moncton/Greater Moncton International | 12 | 8,714 | 20 | 13 | 62 | 22 | 761 |
| Montréal/Mirabel International | 40 | 1,517 | 21 | 11 | 26 | 21 | 126 |
| Montréal/Pierre Elliott Trudeau International | 4 | 16,568 | 20 | 18 | 71 | 12 | 685 |
| Montréal/St-Hubert | 13 | 8,548 | 2 | 14 | 110 | 28 | 823 |
| Oshawa | 33 | 3,551 | 27 | 15 | 58 | 21 | 322 |
| Ottawa/Macdonald-Cartier International | 8 | 10,977 | 25 | 16 | 78 | 25 | 576 |
| Pitt Meadows | 19 | 6,197 | 27 | 14 | 83 | 10 | 568 |
| Prince George | 36 | 2,727 | 21 | 12 | 49 | 22 | 257 |
| Québec/Jean Lesage International | 14 | 7,781 | 2 | 9 | 61 | 21 | 492 |
| Regina International | 28 | 4,329 | 26 | 14 | 52 | 27 | 304 |
| Saskatoon/John G Diefenbaker International | 17 | 6,344 | 16 | 15 | 58 | 27 | 422 |
| Sault Ste. Marie | 31 | 3,741 | 14 | 16 | 70 | 23 | 416 |
| St. John's International | 34 | 2,831 | 9 | 14 | 30 | 7 | 191 |
| St-Jean | 42 | 842 | 25 | 14 | 31 | 25 | 105 |
| Sudbury | 37 | 2,342 | 25 | 14 | 28 | 28 | 130 |
| Thunder Bay | 16 | 6,793 | 14 | 19 | 86 | 13 | 504 |
| Toronto/Buttonville Municipal | 15 | 7,466 | 23 | 15 | 103 | 21 | 696 |
| Toronto/City Centre | 25 | 4,794 | 20 | 13 | 80 | 24 | 380 |
| Toronto/Lester B Pearson International | 1 | 31,368 | 27 | 18 | 99 | 23 | 1,258 |
| Vancouver Harbour | 32 | 3,637 | 23 | 15 | 32 | 27 | 205 |
| Vancouver International | 2 | 22,288 | 27 | 17 | 76 | 22 | 910 |
| Victoria International | 7 | 11,912 | 7 | 13 | 86 | 22 | 710 |
| Whitehorse International | 41 | 1,362 | 16 | 16 | 47 | 16 | 127 |
| Windsor | 38 | 2,241 | 9 | 14 | 53 | 9 | 174 |
| Winnipeg/James Armstrong Richardson International | 9 | 10,771 | 5 | 14 | 58 | 28 | 513 |
| Winnipeg/St. Andrews | 24 | 5,001 | 17 | 16 | 96 | 17 | 477 |
| Yellowknife | 26 | 4,751 | 3 | 15 | 41 | 7 | 252 |

Table 8-2
Total aircraft movements, peak hour and peak day — NAV CANADA flight service stations

| | Rank of movements | Number of movements | Peak hour occurrence | | | Peak day occurrence | |
|----------------------|-------------------|---------------------|----------------------|-------------|---------------------|---------------------|---------------------|
| | | | Day in month | Hour in day | Number of movements | Day in month | Number of movements |
| Brandon Municipal | 45 | 570 | 22 | 19 | 31 | 22 | 85 |
| Campbell River | 15 | 1,966 | 23 | 16 | 57 | 23 | 185 |
| Castlegar | 43 | 675 | 1 | 11 | 48 | 1 | 120 |
| Charlottetown | 22 | 1,264 | 9 | 9 | 26 | 1 | 96 |
| Churchill | 44 | 580 | 2 | 19 | 6 | 15 | 35 |
| Cranbrook | 30 | 914 | 6 | 12 | 19 | 23 | 54 |
| Dawson Creek | 47 | 538 | 23 | 12 | 8 | 6 | 32 |
| Deer Lake | 23 | 1,240 | 9 | 13 | 24 | 9 | 85 |
| Fort McMurray | 2 | 3,559 | 10 | 15 | 40 | 24 | 175 |
| Fort Nelson | 33 | 883 | 20 | 10 | 15 | 20 | 81 |
| Fort St John | 17 | 1,811 | 6 | 10 | 46 | 5 | 161 |
| Fredericton | 14 | 1,978 | 12 | 14 | 39 | 6 | 134 |
| Grande Prairie | 6 | 2,519 | 21 | 17 | 34 | 21 | 184 |
| High Level | 42 | 682 | 27 | 12 | 9 | 20 | 47 |
| Îles-de-la-Madeleine | 50 | 452 | 13 | 8 | 15 | 13 | 37 |
| Inuvik/Mike Zubko | 38 | 688 | 3 | 15 | 8 | 28 | 38 |
| Iqaluit | 26 | 1,150 | 21 | 11 | 23 | 26 | 79 |
| Kamloops | 9 | 2,273 | 5 | 15 | 53 | 1 | 122 |
| Kenora | 35 | 761 | 26 | 14 | 17 | 28 | 72 |
| Kingston | 11 | 2,131 | 24 | 12 | 45 | 24 | 223 |
| Kuujuuaq | 34 | 794 | 1 | 16 | 13 | 24 | 54 |
| Kuujuuarapik | 52 | 311 | 21 | 12 | 5 | 16 | 21 |
| La Grande Rivière | 36 | 691 | 26 | 10 | 15 | 26 | 46 |
| La Ronge | 21 | 1,339 | 14 | 19 | 17 | 14 | 95 |
| Lethbridge | 20 | 1,637 | 3 | 13 | 39 | 3 | 182 |
| Lloydminster | 28 | 980 | 11 | 11 | 31 | 25 | 84 |
| Medicine Hat | 25 | 1,206 | 4 | 13 | 24 | 25 | 71 |
| Mont-Joli | 53 | 245 | 1 | 7 | 4 | 26 | 16 |
| Nanaimo | 16 | 1,838 | 10 | 14 | 51 | 10 | 188 |
| Norman Wells | 39 | 687 | 28 | 12 | 13 | 13 | 45 |
| North Bay | 1 | 4,338 | 27 | 15 | 65 | 27 | 374 |
| Ottawa/Gatineau | 13 | 2,078 | 11 | 11 | 59 | 11 | 260 |
| Peace River | 31 | 902 | 15 | 11 | 12 | 1 | 66 |
| Penticton | 10 | 2,160 | 23 | 14 | 56 | 16 | 188 |
| Port Hardy | 41 | 686 | 6 | 15 | 24 | 6 | 44 |
| Prince Albert | 24 | 1,231 | 8 | 8 | 12 | 28 | 78 |
| Prince Rupert | 54 | 237 | 9 | 11 | 4 | 16 | 20 |
| Rankin Inlet | 37 | 688 | 23 | 13 | 9 | 23 | 52 |
| Red Deer Regional | 4 | 2,652 | 3 | 13 | 46 | 26 | 253 |
| Rouyn-Noranda | 40 | 686 | 13 | 8 | 8 | 27 | 44 |
| Saint John | 18 | 1,801 | 12 | 12 | 24 | 23 | 121 |
| Sept-Îles | 19 | 1,652 | 26 | 13 | 25 | 26 | 118 |
| Sioux Lookout | 8 | 2,373 | 27 | 8 | 20 | 5 | 108 |
| Smithers | 49 | 510 | 21 | 9 | 8 | 12 | 32 |
| St Anthony | 51 | 377 | 11 | 15 | 5 | 23 | 28 |
| St Catharines | 27 | 1,131 | 21 | 16 | 49 | 24 | 190 |
| Terrace | 29 | 940 | 22 | 9 | 24 | 22 | 94 |
| Thompson | 7 | 2,426 | 2 | 14 | 19 | 27 | 125 |
| Timmins | 12 | 2,093 | 10 | 18 | 20 | 16 | 126 |
| Val-D'or | 32 | 894 | 24 | 10 | 20 | 25 | 61 |
| Victoria Harbour | 5 | 2,618 | 28 | 16 | 22 | 20 | 145 |
| Wabush | 48 | 521 | 2 | 11 | 7 | 9 | 29 |
| Whitecourt | 3 | 2,941 | 12 | 16 | 75 | 13 | 308 |
| Williams Lake | 46 | 558 | 2 | 14 | 19 | 2 | 37 |

Table 9-1
Itinerant aircraft movements, peak hour and peak day — NAV CANADA towers

| | Rank of movements | Number of movements | Peak hour occurrence | | | Peak day occurrence | |
|---|-------------------|---------------------|----------------------|-------------|---------------------|---------------------|---------------------|
| | | | Day in month | Hour in day | Number of movements | Day in month | Number of movements |
| Abbotsford | 10 | 5,575 | 7 | 11 | 44 | 2 | 336 |
| Boundary Bay | 14 | 4,612 | 10 | 14 | 63 | 27 | 389 |
| Calgary International | 3 | 18,095 | 1 | 16 | 61 | 15 | 778 |
| Calgary/Springbank | 20 | 3,615 | 24 | 14 | 51 | 3 | 352 |
| Chicoutimi/St-Honoré | 39 | 1,071 | 22 | 15 | 21 | 28 | 116 |
| Edmonton City Centre | 12 | 4,978 | 13 | 15 | 32 | 15 | 237 |
| Edmonton International | 5 | 9,974 | 15 | 8 | 47 | 15 | 447 |
| Edmonton/Villeneuve | 40 | 929 | 25 | 16 | 13 | 25 | 78 |
| Gander International | 35 | 1,621 | 19 | 10 | 15 | 22 | 110 |
| Halifax International | 11 | 5,512 | 2 | 14 | 23 | 22 | 247 |
| Hamilton | 25 | 2,825 | 24 | 12 | 22 | 28 | 182 |
| Kelowna | 21 | 3,522 | 16 | 15 | 24 | 21 | 196 |
| Kitchener/Waterloo | 28 | 2,237 | 21 | 14 | 36 | 24 | 231 |
| Langley | 32 | 1,841 | 10 | 14 | 27 | 10 | 166 |
| London | 23 | 3,172 | 21 | 15 | 32 | 24 | 230 |
| Moncton/Greater Moncton International | 13 | 4,880 | 22 | 16 | 28 | 22 | 339 |
| Montréal/Mirabel International | 38 | 1,231 | 21 | 15 | 14 | 21 | 80 |
| Montréal/Pierre Elliott Trudeau International | 4 | 16,568 | 20 | 18 | 71 | 12 | 685 |
| Montréal/St-Hubert | 18 | 3,912 | 3 | 14 | 38 | 28 | 329 |
| Oshawa | 36 | 1,555 | 21 | 14 | 21 | 24 | 144 |
| Ottawa/Macdonald-Cartier International | 7 | 8,752 | 23 | 15 | 37 | 27 | 381 |
| Pitt Meadows | 29 | 2,205 | 10 | 15 | 40 | 10 | 228 |
| Prince George | 33 | 1,831 | 26 | 16 | 14 | 22 | 109 |
| Québec/Jean Lesage International | 9 | 5,897 | 21 | 15 | 37 | 21 | 322 |
| Regina International | 24 | 3,035 | 26 | 16 | 27 | 12 | 153 |
| Saskatoon/John G Diefenbaker International | 15 | 4,238 | 16 | 15 | 26 | 15 | 231 |
| Sault Ste. Marie | 34 | 1,747 | 14 | 17 | 14 | 14 | 114 |
| St. John's International | 26 | 2,655 | 2 | 17 | 15 | 21 | 124 |
| St-Jean | 42 | 598 | 25 | 14 | 15 | 25 | 83 |
| Sudbury | 31 | 2,083 | 4 | 13 | 15 | 28 | 116 |
| Thunder Bay | 16 | 4,227 | 14 | 15 | 26 | 13 | 216 |
| Toronto/Buttonville Municipal | 17 | 3,974 | 21 | 14 | 48 | 21 | 390 |
| Toronto/City Centre | 27 | 2,624 | 24 | 14 | 30 | 28 | 171 |
| Toronto/Lester B Pearson International | 1 | 31,368 | 27 | 18 | 99 | 23 | 1,258 |
| Vancouver Harbour | 19 | 3,637 | 23 | 15 | 32 | 27 | 205 |
| Vancouver International | 2 | 22,288 | 27 | 17 | 76 | 22 | 910 |
| Victoria International | 8 | 6,091 | 10 | 15 | 38 | 22 | 326 |
| Whitehorse International | 41 | 898 | 16 | 16 | 11 | 23 | 57 |
| Windsor | 37 | 1,363 | 10 | 14 | 13 | 23 | 92 |
| Winnipeg/James Armstrong Richardson International | 6 | 9,831 | 7 | 13 | 39 | 28 | 446 |
| Winnipeg/St. Andrews | 30 | 2,107 | 17 | 13 | 27 | 17 | 149 |
| Yellowknife | 22 | 3,445 | 8 | 14 | 20 | 2 | 158 |

Table 9-2
Itinerant aircraft movements, peak hour and peak day — NAV CANADA flight service stations

| | Rank of movements | Number of movements | Peak hour occurrence | | | Peak day occurrence | |
|----------------------|-------------------|---------------------|----------------------|-------------|---------------------|---------------------|---------------------|
| | | | Day in month | Hour in day | Number of movements | Day in month | Number of movements |
| Brandon Municipal | 49 | 384 | 14 | 14 | 7 | 22 | 35 |
| Campbell River | 20 | 1,124 | 22 | 13 | 16 | 22 | 84 |
| Castlegar | 51 | 323 | 14 | 16 | 6 | 1 | 26 |
| Charlottetown | 22 | 956 | 20 | 9 | 10 | 7 | 63 |
| Churchill | 42 | 580 | 2 | 19 | 6 | 15 | 35 |
| Cranbrook | 31 | 738 | 5 | 17 | 5 | 23 | 34 |
| Dawson Creek | 43 | 538 | 23 | 12 | 8 | 6 | 32 |
| Deer Lake | 19 | 1,131 | 28 | 8 | 13 | 14 | 57 |
| Fort McMurray | 1 | 3,239 | 1 | 9 | 20 | 1 | 162 |
| Fort Nelson | 26 | 861 | 20 | 15 | 14 | 20 | 75 |
| Fort St John | 11 | 1,530 | 21 | 10 | 18 | 21 | 116 |
| Fredericton | 8 | 1,553 | 12 | 14 | 19 | 9 | 87 |
| Grande Prairie | 5 | 2,097 | 14 | 11 | 15 | 14 | 119 |
| High Level | 37 | 671 | 27 | 12 | 9 | 20 | 47 |
| Îles-de-la-Madeleine | 48 | 432 | 20 | 14 | 5 | 20 | 35 |
| Inuvik/Mike Zubko | 35 | 680 | 7 | 14 | 8 | 28 | 38 |
| Iqaluit | 21 | 1,014 | 2 | 14 | 8 | 26 | 63 |
| Kamloops | 12 | 1,511 | 23 | 14 | 13 | 1 | 90 |
| Kenora | 39 | 649 | 6 | 7 | 6 | 28 | 42 |
| Kingston | 15 | 1,315 | 24 | 13 | 14 | 24 | 101 |
| Kuujuuaq | 32 | 710 | 27 | 13 | 9 | 23 | 39 |
| Kuujuuarapik | 52 | 311 | 21 | 12 | 5 | 16 | 21 |
| La Grande Rivière | 40 | 613 | 26 | 10 | 9 | 21 | 34 |
| La Ronge | 16 | 1,265 | 28 | 15 | 12 | 28 | 84 |
| Lethbridge | 18 | 1,171 | 24 | 15 | 15 | 16 | 103 |
| Lloydminster | 34 | 680 | 25 | 12 | 10 | 15 | 45 |
| Medicine Hat | 23 | 928 | 21 | 15 | 13 | 21 | 48 |
| Mont-Joli | 53 | 245 | 1 | 7 | 4 | 26 | 16 |
| Nanaimo | 13 | 1,422 | 10 | 14 | 23 | 10 | 108 |
| Norman Wells | 38 | 669 | 28 | 12 | 13 | 28 | 43 |
| North Bay | 7 | 1,846 | 9 | 15 | 19 | 23 | 127 |
| Ottawa/Gatineau | 24 | 922 | 11 | 11 | 31 | 11 | 98 |
| Peace River | 25 | 870 | 15 | 11 | 12 | 1 | 66 |
| Penticton | 27 | 842 | 16 | 11 | 10 | 16 | 64 |
| Port Hardy | 41 | 594 | 12 | 14 | 10 | 12 | 38 |
| Prince Albert | 17 | 1,201 | 8 | 8 | 12 | 28 | 72 |
| Prince Rupert | 54 | 237 | 9 | 11 | 4 | 16 | 20 |
| Rankin Inlet | 33 | 686 | 23 | 13 | 9 | 23 | 52 |
| Red Deer Regional | 10 | 1,544 | 3 | 13 | 20 | 24 | 129 |
| Rouyn-Noranda | 36 | 680 | 19 | 8 | 6 | 27 | 44 |
| Saint John | 14 | 1,345 | 5 | 18 | 17 | 5 | 85 |
| Sept-Îles | 9 | 1,546 | 6 | 15 | 23 | 6 | 94 |
| Sioux Lookout | 4 | 2,321 | 27 | 8 | 20 | 5 | 108 |
| Smithers | 46 | 510 | 21 | 9 | 8 | 12 | 32 |
| St Anthony | 50 | 377 | 11 | 15 | 5 | 23 | 28 |
| St Catharines | 47 | 493 | 24 | 13 | 13 | 24 | 72 |
| Terrace | 28 | 808 | 25 | 15 | 10 | 16 | 50 |
| Thompson | 3 | 2,392 | 27 | 16 | 17 | 27 | 123 |
| Timmins | 6 | 1,971 | 9 | 17 | 15 | 28 | 113 |
| Val-D'or | 30 | 776 | 12 | 9 | 7 | 27 | 42 |
| Victoria Harbour | 2 | 2,616 | 28 | 16 | 22 | 20 | 145 |
| Wabush | 45 | 521 | 2 | 11 | 7 | 9 | 29 |
| Whitecourt | 29 | 793 | 12 | 14 | 11 | 13 | 64 |
| Williams Lake | 44 | 526 | 24 | 9 | 8 | 23 | 32 |

Table 10-1
Local movements, peak hour and peak day — NAV CANADA towers

| | Rank of movements | Number of movements | Peak hour occurrence | | | Peak day occurrence | |
|---|-------------------|---------------------|----------------------|-------------|---------------------|---------------------|---------------------|
| | | | Day in month | Hour in day | Number of movements | Day in month | Number of movements |
| Abbotsford | 1 | 9,708 | 7 | 11 | 104 | 20 | 608 |
| Boundary Bay | 2 | 7,424 | 26 | 19 | 88 | 28 | 452 |
| Calgary International | 38 | 106 | 15 | 12 | 6 | 16 | 22 |
| Calgary/Springbank | 3 | 5,842 | 10 | 15 | 74 | 3 | 512 |
| Chicoutimi/St-Honoré | 28 | 930 | 23 | 13 | 40 | 28 | 168 |
| Edmonton City Centre | 25 | 1,233 | 1 | 13 | 20 | 18 | 112 |
| Edmonton International | 33 | 415 | 17 | 18 | 14 | 17 | 42 |
| Edmonton/Villeneuve | 9 | 3,076 | 13 | 15 | 68 | 28 | 280 |
| Gander International | 26 | 1,148 | 9 | 18 | 34 | 22 | 192 |
| Halifax International | 31 | 544 | 13 | 14 | 20 | 13 | 78 |
| Hamilton | 22 | 1,594 | 10 | 10 | 52 | 20 | 144 |
| Kelowna | 14 | 2,277 | 15 | 16 | 58 | 15 | 204 |
| Kitchener/Waterloo | 11 | 2,788 | 24 | 12 | 60 | 24 | 332 |
| Langley | 17 | 2,146 | 3 | 13 | 72 | 10 | 206 |
| London | 13 | 2,462 | 20 | 11 | 52 | 23 | 250 |
| Moncton/Greater Moncton International | 7 | 3,834 | 22 | 20 | 48 | 22 | 422 |
| Montréal/Mirabel International | 34 | 286 | 21 | 10 | 20 | 21 | 46 |
| Montréal/Pierre Elliott Trudeau International | 0 | 0 | 0 | 0 | 0 | 0 | 0 |
| Montréal/St-Hubert | 5 | 4,636 | 2 | 14 | 98 | 28 | 494 |
| Oshawa | 19 | 1,996 | 17 | 10 | 48 | 27 | 200 |
| Ottawa/Macdonald-Cartier International | 15 | 2,225 | 25 | 16 | 46 | 25 | 235 |
| Pitt Meadows | 6 | 3,992 | 10 | 11 | 60 | 2 | 358 |
| Prince George | 29 | 896 | 21 | 12 | 42 | 22 | 148 |
| Québec/Jean Lesage International | 21 | 1,884 | 2 | 9 | 44 | 2 | 210 |
| Regina International | 24 | 1,294 | 26 | 14 | 42 | 27 | 154 |
| Saskatoon/John G Diefenbaker International | 18 | 2,106 | 4 | 13 | 42 | 18 | 222 |
| Sault Ste. Marie | 20 | 1,994 | 14 | 16 | 58 | 23 | 308 |
| St. John's International | 37 | 176 | 7 | 9 | 20 | 7 | 74 |
| St-Jean | 36 | 244 | 24 | 14 | 20 | 24 | 40 |
| Sudbury | 35 | 259 | 25 | 14 | 22 | 25 | 50 |
| Thunder Bay | 12 | 2,566 | 14 | 19 | 78 | 27 | 290 |
| Toronto/Buttonville Municipal | 8 | 3,492 | 9 | 15 | 66 | 20 | 430 |
| Toronto/City Centre | 16 | 2,170 | 20 | 13 | 62 | 24 | 218 |
| Toronto/Lester B Pearson International | 0 | 0 | 0 | 0 | 0 | 0 | 0 |
| Vancouver Harbour | 0 | 0 | 0 | 0 | 0 | 0 | 0 |
| Vancouver International | 0 | 0 | 0 | 0 | 0 | 0 | 0 |
| Victoria International | 4 | 5,821 | 14 | 14 | 68 | 12 | 390 |
| Whitehorse International | 32 | 464 | 16 | 16 | 36 | 16 | 82 |
| Windsor | 30 | 878 | 9 | 14 | 46 | 9 | 96 |
| Winnipeg/James Armstrong Richardson International | 27 | 940 | 5 | 14 | 26 | 5 | 102 |
| Winnipeg/St. Andrews | 10 | 2,894 | 17 | 16 | 74 | 17 | 328 |
| Yellowknife | 23 | 1,306 | 3 | 15 | 32 | 7 | 94 |

Table 10-2
Local movements, peak hour and peak day — NAV CANADA flight service stations

| | Rank of movements | Number of movements | Peak hour occurrence | | | Peak day occurrence | |
|----------------------|-------------------|---------------------|----------------------|-------------|---------------------|---------------------|---------------------|
| | | | Day in month | Hour in day | Number of movements | Day in month | Number of movements |
| Brandon Municipal | 21 | 186 | 22 | 19 | 28 | 22 | 50 |
| Campbell River | 6 | 842 | 23 | 16 | 42 | 26 | 112 |
| Castlegar | 15 | 352 | 1 | 11 | 44 | 1 | 94 |
| Charlottetown | 17 | 308 | 1 | 15 | 22 | 1 | 50 |
| Churchill | 0 | 0 | 0 | 0 | 0 | 0 | 0 |
| Cranbrook | 22 | 176 | 6 | 12 | 16 | 4 | 22 |
| Dawson Creek | 0 | 0 | 0 | 0 | 0 | 0 | 0 |
| Deer Lake | 28 | 109 | 9 | 13 | 20 | 15 | 36 |
| Fort McMurray | 16 | 320 | 10 | 15 | 36 | 24 | 72 |
| Fort Nelson | 39 | 22 | 14 | 10 | 4 | 14 | 8 |
| Fort St John | 19 | 281 | 6 | 10 | 35 | 5 | 98 |
| Fredericton | 12 | 425 | 5 | 10 | 20 | 6 | 58 |
| Grande Prairie | 13 | 422 | 21 | 17 | 28 | 16 | 76 |
| High Level | 42 | 11 | 8 | 12 | 4 | 8 | 4 |
| Îles-de-la-Madeleine | 40 | 20 | 13 | 8 | 12 | 13 | 12 |
| Inuvik/Mike Zubko | 43 | 8 | 3 | 15 | 4 | 3 | 4 |
| Iqaluit | 23 | 136 | 21 | 11 | 20 | 1 | 24 |
| Kamloops | 8 | 762 | 5 | 15 | 46 | 17 | 68 |
| Kenora | 27 | 112 | 26 | 14 | 14 | 28 | 30 |
| Kingston | 7 | 816 | 24 | 12 | 32 | 24 | 122 |
| Kuujuuaq | 31 | 84 | 1 | 16 | 11 | 1 | 22 |
| Kuujuuarapik | 0 | 0 | 0 | 0 | 0 | 0 | 0 |
| La Grande Rivière | 32 | 78 | 1 | 23 | 10 | 26 | 18 |
| La Ronge | 33 | 74 | 14 | 19 | 12 | 14 | 22 |
| Lethbridge | 10 | 466 | 3 | 13 | 34 | 3 | 106 |
| Lloydminster | 18 | 300 | 11 | 11 | 28 | 25 | 46 |
| Medicine Hat | 20 | 278 | 4 | 13 | 22 | 4 | 46 |
| Mont-Joli | 0 | 0 | 0 | 0 | 0 | 0 | 0 |
| Nanaimo | 14 | 416 | 10 | 14 | 28 | 10 | 80 |
| Norman Wells | 41 | 18 | 13 | 14 | 6 | 13 | 12 |
| North Bay | 1 | 2,492 | 15 | 13 | 50 | 27 | 248 |
| Ottawa/Gatineau | 4 | 1,156 | 11 | 12 | 30 | 11 | 162 |
| Peace River | 36 | 32 | 10 | 17 | 8 | 9 | 10 |
| Penticton | 3 | 1,318 | 15 | 14 | 48 | 16 | 124 |
| Port Hardy | 30 | 92 | 6 | 15 | 18 | 6 | 24 |
| Prince Albert | 38 | 30 | 25 | 17 | 8 | 25 | 8 |
| Prince Rupert | 0 | 0 | 0 | 0 | 0 | 0 | 0 |
| Rankin Inlet | 46 | 2 | 21 | 22 | 2 | 21 | 2 |
| Red Deer Regional | 5 | 1,108 | 26 | 14 | 28 | 26 | 144 |
| Rouyn-Noranda | 44 | 6 | 13 | 8 | 4 | 13 | 4 |
| Saint John | 11 | 456 | 12 | 12 | 18 | 23 | 64 |
| Sept-Îles | 29 | 106 | 26 | 13 | 18 | 26 | 46 |
| Sioux Lookout | 34 | 52 | 18 | 18 | 10 | 18 | 16 |
| Smithers | 0 | 0 | 0 | 0 | 0 | 0 | 0 |
| St Anthony | 0 | 0 | 0 | 0 | 0 | 0 | 0 |
| St Catharines | 9 | 638 | 21 | 16 | 40 | 24 | 118 |
| Terrace | 24 | 132 | 22 | 9 | 22 | 22 | 54 |
| Thompson | 35 | 34 | 2 | 14 | 10 | 2 | 10 |
| Timmins | 25 | 122 | 10 | 18 | 16 | 16 | 44 |
| Val-D'or | 26 | 118 | 24 | 10 | 18 | 24 | 24 |
| Victoria Harbour | 45 | 2 | 26 | 12 | 2 | 26 | 2 |
| Wabush | 0 | 0 | 0 | 0 | 0 | 0 | 0 |
| Whitecourt | 2 | 2,148 | 12 | 16 | 72 | 13 | 244 |
| Williams Lake | 37 | 32 | 2 | 14 | 18 | 2 | 18 |

Table 11-1
Local movements - civil, peak hour and peak day — NAV CANADA towers

| | Rank of movements | Number of movements | Peak hour occurrence | | | Peak day occurrence | |
|---|-------------------|---------------------|----------------------|-------------|---------------------|---------------------|---------------------|
| | | | Day in month | Hour in day | Number of movements | Day in month | Number of movements |
| Abbotsford | 1 | 9,698 | 7 | 11 | 104 | 20 | 608 |
| Boundary Bay | 2 | 7,424 | 26 | 19 | 88 | 28 | 452 |
| Calgary International | 38 | 90 | 15 | 12 | 6 | 16 | 22 |
| Calgary/Springbank | 3 | 5,826 | 10 | 15 | 74 | 3 | 512 |
| Chicoutimi/St-Honoré | 27 | 930 | 23 | 13 | 40 | 28 | 168 |
| Edmonton City Centre | 25 | 1,191 | 1 | 13 | 20 | 2 | 94 |
| Edmonton International | 31 | 405 | 17 | 18 | 14 | 17 | 42 |
| Edmonton/Villeneuve | 9 | 3,076 | 13 | 15 | 68 | 28 | 280 |
| Gander International | 26 | 944 | 9 | 18 | 34 | 22 | 150 |
| Halifax International | 32 | 394 | 13 | 14 | 20 | 23 | 60 |
| Hamilton | 22 | 1,594 | 10 | 10 | 52 | 20 | 144 |
| Kelowna | 14 | 2,277 | 15 | 16 | 58 | 15 | 204 |
| Kitchener/Waterloo | 11 | 2,782 | 24 | 12 | 60 | 24 | 332 |
| Langley | 17 | 2,146 | 3 | 13 | 72 | 10 | 206 |
| London | 13 | 2,434 | 20 | 11 | 52 | 23 | 250 |
| Moncton/Greater Moncton International | 7 | 3,798 | 22 | 20 | 48 | 22 | 422 |
| Montréal/Mirabel International | 35 | 254 | 21 | 10 | 20 | 21 | 34 |
| Montréal/Pierre Elliott Trudeau International | 0 | 0 | 0 | 0 | 0 | 0 | 0 |
| Montréal/St-Hubert | 5 | 4,624 | 2 | 14 | 98 | 28 | 492 |
| Oshawa | 19 | 1,996 | 17 | 10 | 48 | 27 | 200 |
| Ottawa/Macdonald-Cartier International | 15 | 2,203 | 25 | 16 | 46 | 25 | 235 |
| Pitt Meadows | 6 | 3,992 | 10 | 11 | 60 | 2 | 358 |
| Prince George | 28 | 896 | 21 | 12 | 42 | 22 | 148 |
| Québec/Jean Lesage International | 21 | 1,852 | 2 | 9 | 44 | 2 | 210 |
| Regina International | 23 | 1,262 | 26 | 14 | 40 | 27 | 152 |
| Saskatoon/John G Diefenbaker International | 18 | 2,046 | 4 | 13 | 42 | 18 | 222 |
| Sault Ste. Marie | 20 | 1,994 | 14 | 16 | 58 | 23 | 308 |
| St. John's International | 37 | 176 | 7 | 9 | 20 | 7 | 74 |
| St-Jean | 36 | 244 | 24 | 14 | 20 | 24 | 40 |
| Sudbury | 34 | 259 | 25 | 14 | 22 | 25 | 50 |
| Thunder Bay | 12 | 2,566 | 14 | 19 | 78 | 27 | 290 |
| Toronto/Buttonville Municipal | 8 | 3,492 | 9 | 15 | 66 | 20 | 430 |
| Toronto/City Centre | 16 | 2,170 | 20 | 13 | 62 | 24 | 218 |
| Toronto/Lester B Pearson International | 0 | 0 | 0 | 0 | 0 | 0 | 0 |
| Vancouver Harbour | 0 | 0 | 0 | 0 | 0 | 0 | 0 |
| Vancouver International | 0 | 0 | 0 | 0 | 0 | 0 | 0 |
| Victoria International | 4 | 5,559 | 14 | 14 | 68 | 22 | 384 |
| Whitehorse International | 33 | 362 | 28 | 16 | 22 | 3 | 52 |
| Windsor | 29 | 878 | 9 | 14 | 46 | 9 | 96 |
| Winnipeg/James Armstrong Richardson International | 30 | 574 | 13 | 16 | 14 | 22 | 52 |
| Winnipeg/St. Andrews | 10 | 2,894 | 17 | 16 | 74 | 17 | 328 |
| Yellowknife | 24 | 1,224 | 3 | 15 | 32 | 7 | 94 |

Table 11-2
Local movements - civil, peak hour and peak day — NAV CANADA flight service stations

| | Rank of movements | Number of movements | Peak hour occurrence | | | Peak day occurrence | |
|----------------------|-------------------|---------------------|----------------------|-------------|---------------------|---------------------|---------------------|
| | | | Day in month | Hour in day | Number of movements | Day in month | Number of movements |
| Brandon Municipal | 22 | 162 | 22 | 19 | 28 | 22 | 50 |
| Campbell River | 6 | 842 | 23 | 16 | 42 | 26 | 112 |
| Castlegar | 14 | 352 | 1 | 11 | 44 | 1 | 94 |
| Charlottetown | 18 | 286 | 1 | 15 | 22 | 1 | 50 |
| Churchill | 0 | 0 | 0 | 0 | 0 | 0 | 0 |
| Cranbrook | 21 | 176 | 6 | 12 | 16 | 4 | 22 |
| Dawson Creek | 0 | 0 | 0 | 0 | 0 | 0 | 0 |
| Deer Lake | 27 | 109 | 9 | 13 | 20 | 15 | 36 |
| Fort McMurray | 15 | 320 | 10 | 15 | 36 | 24 | 72 |
| Fort Nelson | 39 | 22 | 14 | 10 | 4 | 14 | 8 |
| Fort St John | 19 | 281 | 6 | 10 | 35 | 5 | 98 |
| Fredericton | 17 | 291 | 11 | 13 | 18 | 10 | 40 |
| Grande Prairie | 12 | 422 | 21 | 17 | 28 | 16 | 76 |
| High Level | 42 | 11 | 8 | 12 | 4 | 8 | 4 |
| Îles-de-la-Madeleine | 40 | 20 | 13 | 8 | 12 | 13 | 12 |
| Inuvik/Mike Zubko | 43 | 8 | 3 | 15 | 4 | 3 | 4 |
| Iqaluit | 23 | 136 | 21 | 11 | 20 | 1 | 24 |
| Kamloops | 8 | 762 | 5 | 15 | 46 | 17 | 68 |
| Kenora | 30 | 84 | 28 | 10 | 12 | 15 | 16 |
| Kingston | 7 | 816 | 24 | 12 | 32 | 24 | 122 |
| Kuujuuaq | 29 | 84 | 1 | 16 | 11 | 1 | 22 |
| Kuujuuarapik | 0 | 0 | 0 | 0 | 0 | 0 | 0 |
| La Grande Rivière | 31 | 78 | 1 | 23 | 10 | 26 | 18 |
| La Ronge | 32 | 74 | 14 | 19 | 12 | 14 | 22 |
| Lethbridge | 10 | 466 | 3 | 13 | 34 | 3 | 106 |
| Lloydminster | 16 | 300 | 11 | 11 | 28 | 25 | 46 |
| Medicine Hat | 20 | 274 | 4 | 13 | 22 | 4 | 46 |
| Mont-Joli | 0 | 0 | 0 | 0 | 0 | 0 | 0 |
| Nanaimo | 13 | 416 | 10 | 14 | 28 | 10 | 80 |
| Norman Wells | 41 | 18 | 13 | 14 | 6 | 13 | 12 |
| North Bay | 1 | 2,492 | 15 | 13 | 50 | 27 | 248 |
| Ottawa/Gatineau | 4 | 1,156 | 11 | 12 | 30 | 11 | 162 |
| Peace River | 36 | 32 | 10 | 17 | 8 | 9 | 10 |
| Penticton | 3 | 1,318 | 15 | 14 | 48 | 16 | 124 |
| Port Hardy | 33 | 56 | 26 | 9 | 12 | 26 | 12 |
| Prince Albert | 38 | 30 | 25 | 17 | 8 | 25 | 8 |
| Prince Rupert | 0 | 0 | 0 | 0 | 0 | 0 | 0 |
| Rankin Inlet | 45 | 2 | 21 | 22 | 2 | 21 | 2 |
| Red Deer Regional | 5 | 1,108 | 26 | 14 | 28 | 26 | 144 |
| Rouyn-Noranda | 44 | 6 | 13 | 8 | 4 | 13 | 4 |
| Saint John | 11 | 430 | 14 | 13 | 18 | 23 | 64 |
| Sept-Îles | 28 | 106 | 26 | 13 | 18 | 26 | 46 |
| Sioux Lookout | 34 | 52 | 18 | 18 | 10 | 18 | 16 |
| Smithers | 0 | 0 | 0 | 0 | 0 | 0 | 0 |
| St Anthony | 0 | 0 | 0 | 0 | 0 | 0 | 0 |
| St Catharines | 9 | 638 | 21 | 16 | 40 | 24 | 118 |
| Terrace | 24 | 132 | 22 | 9 | 22 | 22 | 54 |
| Thompson | 35 | 34 | 2 | 14 | 10 | 2 | 10 |
| Timmins | 26 | 112 | 10 | 18 | 16 | 16 | 44 |
| Val-D'or | 25 | 118 | 24 | 10 | 18 | 24 | 24 |
| Victoria Harbour | 46 | 2 | 26 | 12 | 2 | 26 | 2 |
| Wabush | 0 | 0 | 0 | 0 | 0 | 0 | 0 |
| Whitecourt | 2 | 2,148 | 12 | 16 | 72 | 13 | 244 |
| Williams Lake | 37 | 32 | 2 | 14 | 18 | 2 | 18 |

Table 12-1
Local movements - military, peak hour and peak day — NAV CANADA towers

| | Rank of movements | Number of movements | Peak hour occurrence | | | Peak day occurrence | |
|---|-------------------|---------------------|----------------------|-------------|---------------------|---------------------|---------------------|
| | | | Day in month | Hour in day | Number of movements | Day in month | Number of movements |
| Abbotsford | 18 | 10 | 21 | 11 | 4 | 21 | 6 |
| Boundary Bay | 0 | 0 | 0 | 0 | 0 | 0 | 0 |
| Calgary International | 15 | 16 | 3 | 16 | 4 | 3 | 12 |
| Calgary/Springbank | 16 | 16 | 21 | 19 | 6 | 21 | 16 |
| Chicoutimi/St-Honoré | 0 | 0 | 0 | 0 | 0 | 0 | 0 |
| Edmonton City Centre | 8 | 42 | 18 | 19 | 20 | 18 | 42 |
| Edmonton International | 19 | 10 | 8 | 12 | 4 | 8 | 8 |
| Edmonton/Villeneuve | 0 | 0 | 0 | 0 | 0 | 0 | 0 |
| Gander International | 3 | 204 | 5 | 14 | 20 | 22 | 42 |
| Halifax International | 4 | 150 | 13 | 19 | 14 | 13 | 28 |
| Hamilton | 0 | 0 | 0 | 0 | 0 | 0 | 0 |
| Kelowna | 0 | 0 | 0 | 0 | 0 | 0 | 0 |
| Kitchener/Waterloo | 20 | 6 | 21 | 15 | 6 | 21 | 6 |
| Langley | 0 | 0 | 0 | 0 | 0 | 0 | 0 |
| London | 13 | 28 | 2 | 14 | 12 | 2 | 22 |
| Moncton/Greater Moncton International | 9 | 36 | 10 | 15 | 12 | 10 | 22 |
| Montréal/Mirabel International | 10 | 32 | 12 | 15 | 8 | 21 | 12 |
| Montréal/Pierre Elliott Trudeau International | 0 | 0 | 0 | 0 | 0 | 0 | 0 |
| Montréal/St-Hubert | 17 | 12 | 27 | 11 | 8 | 27 | 8 |
| Oshawa | 0 | 0 | 0 | 0 | 0 | 0 | 0 |
| Ottawa/Macdonald-Cartier International | 14 | 22 | 8 | 15 | 6 | 9 | 8 |
| Pitt Meadows | 0 | 0 | 0 | 0 | 0 | 0 | 0 |
| Prince George | 0 | 0 | 0 | 0 | 0 | 0 | 0 |
| Québec/Jean Lesage International | 12 | 32 | 5 | 14 | 20 | 5 | 26 |
| Regina International | 11 | 32 | 10 | 16 | 10 | 9 | 10 |
| Saskatoon/John G Diefenbaker International | 7 | 60 | 7 | 16 | 12 | 7 | 14 |
| Sault Ste. Marie | 0 | 0 | 0 | 0 | 0 | 0 | 0 |
| St. John's International | 0 | 0 | 0 | 0 | 0 | 0 | 0 |
| St-Jean | 0 | 0 | 0 | 0 | 0 | 0 | 0 |
| Sudbury | 0 | 0 | 0 | 0 | 0 | 0 | 0 |
| Thunder Bay | 0 | 0 | 0 | 0 | 0 | 0 | 0 |
| Toronto/Buttonville Municipal | 0 | 0 | 0 | 0 | 0 | 0 | 0 |
| Toronto/City Centre | 0 | 0 | 0 | 0 | 0 | 0 | 0 |
| Toronto/Lester B Pearson International | 0 | 0 | 0 | 0 | 0 | 0 | 0 |
| Vancouver Harbour | 0 | 0 | 0 | 0 | 0 | 0 | 0 |
| Vancouver International | 0 | 0 | 0 | 0 | 0 | 0 | 0 |
| Victoria International | 2 | 262 | 20 | 15 | 16 | 2 | 70 |
| Whitehorse International | 5 | 102 | 16 | 16 | 18 | 16 | 54 |
| Windsor | 0 | 0 | 0 | 0 | 0 | 0 | 0 |
| Winnipeg/James Armstrong Richardson International | 1 | 366 | 5 | 14 | 26 | 5 | 92 |
| Winnipeg/St. Andrews | 0 | 0 | 0 | 0 | 0 | 0 | 0 |
| Yellowknife | 6 | 82 | 12 | 15 | 14 | 26 | 24 |

Table 12-2
Local movements - military, peak hour and peak day — NAV CANADA flight service stations

| | Rank of movements | Number of movements | Peak hour occurrence | | | Peak day occurrence | |
|----------------------|-------------------|---------------------|----------------------|-------------|---------------------|---------------------|---------------------|
| | | | Day in month | Hour in day | Number of movements | Day in month | Number of movements |
| Brandon Municipal | 5 | 24 | 7 | 11 | 8 | 7 | 8 |
| Campbell River | 0 | 0 | 0 | 0 | 0 | 0 | 0 |
| Castlegar | 0 | 0 | 0 | 0 | 0 | 0 | 0 |
| Charlottetown | 6 | 22 | 9 | 9 | 20 | 9 | 20 |
| Churchill | 0 | 0 | 0 | 0 | 0 | 0 | 0 |
| Cranbrook | 0 | 0 | 0 | 0 | 0 | 0 | 0 |
| Dawson Creek | 0 | 0 | 0 | 0 | 0 | 0 | 0 |
| Deer Lake | 0 | 0 | 0 | 0 | 0 | 0 | 0 |
| Fort McMurray | 0 | 0 | 0 | 0 | 0 | 0 | 0 |
| Fort Nelson | 0 | 0 | 0 | 0 | 0 | 0 | 0 |
| Fort St John | 0 | 0 | 0 | 0 | 0 | 0 | 0 |
| Fredericton | 1 | 134 | 5 | 10 | 20 | 6 | 42 |
| Grande Prairie | 0 | 0 | 0 | 0 | 0 | 0 | 0 |
| High Level | 0 | 0 | 0 | 0 | 0 | 0 | 0 |
| Îles-de-la-Madeleine | 0 | 0 | 0 | 0 | 0 | 0 | 0 |
| Inuvik/Mike Zubko | 0 | 0 | 0 | 0 | 0 | 0 | 0 |
| Iqaluit | 0 | 0 | 0 | 0 | 0 | 0 | 0 |
| Kamloops | 0 | 0 | 0 | 0 | 0 | 0 | 0 |
| Kenora | 3 | 28 | 26 | 14 | 14 | 26 | 14 |
| Kingston | 0 | 0 | 0 | 0 | 0 | 0 | 0 |
| Kuujuuaq | 0 | 0 | 0 | 0 | 0 | 0 | 0 |
| Kuujuuarapik | 0 | 0 | 0 | 0 | 0 | 0 | 0 |
| La Grande Rivière | 0 | 0 | 0 | 0 | 0 | 0 | 0 |
| La Ronge | 0 | 0 | 0 | 0 | 0 | 0 | 0 |
| Lethbridge | 0 | 0 | 0 | 0 | 0 | 0 | 0 |
| Lloydminster | 0 | 0 | 0 | 0 | 0 | 0 | 0 |
| Medicine Hat | 8 | 4 | 21 | 15 | 4 | 21 | 4 |
| Mont-Joli | 0 | 0 | 0 | 0 | 0 | 0 | 0 |
| Nanaimo | 0 | 0 | 0 | 0 | 0 | 0 | 0 |
| Norman Wells | 0 | 0 | 0 | 0 | 0 | 0 | 0 |
| North Bay | 0 | 0 | 0 | 0 | 0 | 0 | 0 |
| Ottawa/Gatineau | 0 | 0 | 0 | 0 | 0 | 0 | 0 |
| Peace River | 0 | 0 | 0 | 0 | 0 | 0 | 0 |
| Penticton | 0 | 0 | 0 | 0 | 0 | 0 | 0 |
| Port Hardy | 2 | 36 | 6 | 15 | 18 | 6 | 24 |
| Prince Albert | 0 | 0 | 0 | 0 | 0 | 0 | 0 |
| Prince Rupert | 0 | 0 | 0 | 0 | 0 | 0 | 0 |
| Rankin Inlet | 0 | 0 | 0 | 0 | 0 | 0 | 0 |
| Red Deer Regional | 0 | 0 | 0 | 0 | 0 | 0 | 0 |
| Rouyn-Noranda | 0 | 0 | 0 | 0 | 0 | 0 | 0 |
| Saint John | 4 | 26 | 12 | 13 | 10 | 12 | 18 |
| Sept-Îles | 0 | 0 | 0 | 0 | 0 | 0 | 0 |
| Sioux Lookout | 0 | 0 | 0 | 0 | 0 | 0 | 0 |
| Smithers | 0 | 0 | 0 | 0 | 0 | 0 | 0 |
| St Anthony | 0 | 0 | 0 | 0 | 0 | 0 | 0 |
| St Catharines | 0 | 0 | 0 | 0 | 0 | 0 | 0 |
| Terrace | 0 | 0 | 0 | 0 | 0 | 0 | 0 |
| Thompson | 0 | 0 | 0 | 0 | 0 | 0 | 0 |
| Timmins | 7 | 10 | 1 | 11 | 10 | 1 | 10 |
| Val-D'or | 0 | 0 | 0 | 0 | 0 | 0 | 0 |
| Victoria Harbour | 0 | 0 | 0 | 0 | 0 | 0 | 0 |
| Wabush | 0 | 0 | 0 | 0 | 0 | 0 | 0 |
| Whitecourt | 0 | 0 | 0 | 0 | 0 | 0 | 0 |
| Williams Lake | 0 | 0 | 0 | 0 | 0 | 0 | 0 |

Methodology

Survey universe

Coverage

The survey covers all aircraft movements at Canadian airports with NAV CANADA air traffic control towers and flight service stations.

Methodology survey

The Itinerant movement record is designed to capture:

- Aircraft identification
- Aircraft type
- The last station before landing at the reporting airport or the next station after take-off
- Arrival or departure
- Time of movement
- Runway used
- Flight rules (Instrument flight rules or Visual flight rules).

The Local aircraft movement record provides for reports of local movements by:

- Hour
- Single engine aircraft
- Multi-engine aircraft
- Jet aircraft
- Military aircraft
- Date of movement

Processing of aircraft movement statistics involves several stages. Preliminary monthly data by class of operation are released in **Preliminary aircraft movement statistics**, catalogue no. 51F0001P (TP-1496 (NAV CANADA towered airports only)). Data which follow in **Aircraft movement statistics - Monthly** report, catalogue nos. 51-007-X and 51-008-X (TP-141) may contain revisions to the originally released figures. Annual tables, which may reflect further revisions, are released in the publication, **Aircraft movement statistics - Annual** report - TP-577. In particular, data on itinerant movements by type of operation may reflect revisions as various sources of comparative information (data collected from commercial air carriers by the Aviation Statistics Centre, Statistics Canada) become available during the processing cycle. Finally, when revisions are required after the release of TP-577, they are contained in the five year historical summary of subsequent editions of TP-577.

The records are completed daily, based on a twenty-four hour clock running from zero hour to 23:59. The times recorded are Coordinated Universal Time (UTC); however, published statistics are shown in local times. The records are transmitted to the Aviation Statistics Centre.

The Aviation Statistics Centre maintains a data base of parameter files of current information on all registered aircraft. The storage of this information reduces the reporting burden of the survey respondents and limits the element of human error associated with the preparation of source documents.

Other parameter files information includes registered aircraft identifications and their corresponding aircraft types, gross take-off weights, types of power plant (piston, jet or turboprop); whether the aircraft are fixed wing, helicopters or gliders. This information also provides a basis for identifying type of flights (commercial, private and government) and the geographical area in which the flights take place.

The parameter files also include airport environment information against which the airport category is checked; the reported runway is validated and the time difference between UTC and Local is assigned.

Data quality and limitations

Aircraft movement statistics are accumulated from data originating with air traffic control tower units or flight service station personnel. Because staff in these positions are highly trained in factual observation and reporting, the entries in the data bank are of a high quality.

The procedures for reporting aircraft movements on the Daily air traffic records by tower units are described in the NAV CANADA Air traffic control manual of operations (TP 703) Volume 1, Para. 1023 to 1023.5. Definitions for terms used in these paragraphs can be found in the appendix I "Glossary of terms" of this report.

To maintain uniformity in the reporting of source data, ASC issues to air traffic control units an "Air traffic designators" handbook (TP 143) listing the official Transport Canada aircraft type designators and the designators of various domestic and international air carriers. This handbook and another titled "Canada flight supplement" listing various airport codes serve as references to help ensure the reporting of the proper aircraft identity and the point of origin and destination of flights.

The processing system contains editing procedures designed to identify data errors occurring during transcription or during data capture of forms. Identified errors are manually corrected by ASC editing staff.

Errors may occur if an aircraft type code which exists is reported or data captured in error for a flight. For example, the reporting or keying of B727 for a flight actually performed by a B737 may not be detected during the system editing. That the aircraft type information is recorded by highly trained air traffic control tower staff using a common handbook of official aircraft codes will minimize this problem.

Similarly, the breakdown of the data on a geographic basis by use of location codes can be subject to error. For smaller locations, alphanumeric location codes are often used and the sequence of numbers and letters determines the geographic area to which the data are assigned. In some cases, where a sequence error has been introduced into the system either at the reporting unit or at data capture, a domestic movement may be classified as transborder or vice versa. The use of common manuals of location identifiers works to minimize this occurrence.

Factors influencing the data

Sydney – the Flight Service Station closed in February 2006. Sydney now appears in Volume II – Airports without air traffic control towers.

Roberval – the Flight Service Station closed in November 2006. As of December 2006, Roberval appears in Volume II – Airports without air traffic control towers.

Appendix I

Glossary of terms

Air carrier

Aircraft operators licensed by the Canadian Transportation Agency to transport persons, mail and/or goods by air.

Levels I to III air carriers (Defn 2000) – This includes every Canadian air carrier that, in each of the two calendar years immediately preceding the report year, realized annual gross revenues of \$1,000,000 or more for the air services for which the air carrier held a licence. Also includes foreign air carriers.

Levels IV to VI air carriers (Defn 2000) – Canadian air carriers not classified in report level I-III that, in each of the two calendar years immediately preceding the report year, realized annual gross revenues of less than \$1,000,000 for the air services for which the air carrier held a licence. Since 2000, levels IV and VI are no longer applicable.

Aircraft movement

A take off, a landing, or a simulated approach by an aircraft. ATC Manops amendment 8-8-83. NC-703.

Class of operation

Aircraft movements are classified as either “Itinerant” or “Local”.

Commercial

Flights by aircraft operators licensed by the Canadian Transportation Agency to perform commercial air services. Commercial operations are divided into two categories: **Air carrier** and **Other commercial**.

Domestic itinerant movements

Movements, at a Canadian airport, of aircraft departing to or arriving from another point in Canada.

FSS

Flight service station.

Government – Civil

Aircraft owned by federal, provincial and municipal bodies as well as foreign states, but excluding those owned by crown corporations, boards and commissions. Such aircraft are coded “3” under “Purpose” in the Canadian civil aircraft register.

Government – Military

Aircraft of any branch of the armed forces of any nation.

Gross take-off weight

The maximum weight for which the aircraft is licensed to operate. For operational purposes, all weights are rounded upwards to the next 1,000 kilograms. Thus 3,200 kilograms becomes 4,000 kilograms.

I.F.R. flight

A flight conducted in accordance with Instrument flight rules.

International movements

Movements, at a Canadian airport, of aircraft arriving from or departing to a point outside Canada. International movements are subclassified into “transborder” (to or from a point in the United States including Alaska but excluding Hawaii), and “other international” (to or from points in countries other than Canada and the United States).

Since aircraft movements are reported on the basis of place “arrived from” or “departed to”, an arrival at Mirabel airport from London, England would appear under “other international”. If the same aircraft moved on to Toronto, both the departure at Mirabel and the arrival at Toronto would be shown as “domestic”.

Itinerant movements

At Airports **with** control towers and/or Flight service stations: for the purpose of completing air traffic records, itinerant movements are considered as movements in which aircraft proceed to or arrive from another location; or where aircraft leave the circuit but return without landing at another airport. At Airports **without** control towers: an aircraft movement in which the aircraft arrives from or departs to a point other than the reporting airport; or a movement by an aircraft that leaves the close proximity of an airport and returns without landing at another airport.

Local movements

At Airports **with** control towers and/or Flight service stations: for the purpose of completing air traffic records, local movements are considered as movements in which the aircraft remains in the circuit. At Airports **without** control towers: an aircraft movement in which the aircraft remains in the close proximity of the airport. Local movements are often carried out during training flights (touch-and-go), equipment tests etc.

Other commercial

Flights performed by **Commercial** aircraft operators not included in the **Air carrier** categories. Flying schools, agricultural sprayers, water-bombers, aerial photography and survey, etc.

Power plant

The source of propulsion. For example, piston engines, turbo-propellers and jet engines. “Helicopters”, in this report, include both piston and turboshaft-driven engines.

Private aircraft

Aircraft used solely for private purposes, not for hire and compensation, which are classified as “Private” or “Private Restricted” in the Canadian civil aircraft register or similar registries of other countries. Owners include individuals, groups and business firms.

Runway 88

Through control zone flights, i.e. flights which communicate with the tower while transiting the tower control zone to another destination without landing at the reporting airport.

Data for these runways are not included in the grand total.

Simulated approaches

Movements that are either missed instrument or practice instrument approaches without landing.

TC

Transport Canada

Tower control zone

A controlled airspace within the proximity of an air traffic control tower, usually within a radius of less than 24 kilometres of the tower.

V.F.R. flight

A flight conducted in accordance with Visual flight rules.

Weight group

The classification of weight classes in groups for statistical purposes.