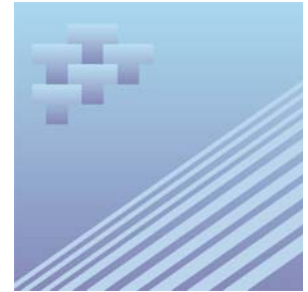




Catalogue no. 51-007-XIE

Aircraft Movement Statistics: NAV CANADA Towers and Flight Service Stations



March 2007



Statistics
Canada

Statistique
Canada

Canada

How to obtain more information

Specific inquiries about this product and related statistics or services should be directed to: Transportation Division, Statistics Canada, Ottawa, Ontario, K1A 0T6 (telephone: 1-866-500-8400).

For information on the wide range of data available from Statistics Canada, you can contact us by calling one of our toll free numbers. You can also contact us by e-mail or by visiting our website at www.statcan.ca.

National inquiries line **1-800-263-1136**

National telecommunications device for the hearing impaired **1-800-363-7629**

Depository Services Program inquiries **1-800-700-1033**

Fax line for Depository Services Program **1-800-889-9734**

E-mail inquiries **infostats@statcan.ca**

Website **www.statcan.ca**

Information to access the product

This product, catalogue no. 51-007-XIE, is available for free in electronic format. To obtain a single issue, visit our website at www.statcan.ca and select Publications.

Standards of service to the public

Statistics Canada is committed to serving its clients in a prompt, reliable and courteous manner. To this end, the Agency has developed *standards of service* which its employees observe in serving its clients.

To obtain a copy of these service standards, please contact Statistics Canada toll free at 1-800-263-1136. The service standards are also published on www.statcan.ca under About us > Providing services to Canadians.



Statistics Canada
Transportation Division

Aircraft Movement Statistics: NAV CANADA Towers and Flight Service Stations

March 2007

Published by authority of the Minister responsible for Statistics Canada

© Minister of Industry, 2007

Published by authority of the Minister responsible for Statistics Canada and the Minister of Transport. © Minister of Industry and Minister of Transport, 2007. All rights reserved. The content of this electronic publication may be reproduced, in whole or in part, and by any means, without further permission from Statistics Canada, subject to the following conditions: that it is done solely for the purposes of private study, research, criticism, review, newspaper summary, and/or for non-commercial purposes; and that Statistics Canada be fully acknowledged as follows: Source (or "Adapted from," if appropriate): Statistics Canada, name of product, catalogue, volume and issue numbers, reference period and page(s). Otherwise, no part of this publication may be reproduced, stored in a retrieval system or transmitted in any form or by any means, electronic, mechanical, photocopy, for any purposes, without the prior written permission of Licensing Services, Client Services Division, Statistics Canada, Ottawa, Ontario, Canada K1A 0T6.

May 2007

Catalogue no. 51-007-XIE, Vol. 1, No. 3

ISSN 1911-6314

Frequency: Monthly

Ottawa

La version française de cette publication est disponible sur demande (n° 51-007-XIF au catalogue).

Note of appreciation

Canada owes the success of its statistical system to a long standing partnership between Statistics Canada, the citizens of Canada, its businesses, governments and other institutions. Accurate and timely statistical information could not be produced without their continued cooperation and goodwill.

User information

Symbols

The following standard symbols are used in Statistics Canada publications:

- . not available for any reference period
- .. not available for a specific reference period
- ... not applicable
- 0 true zero or a value rounded to zero
- 0^s value rounded to 0 (zero) where there is a meaningful distinction between true zero and the value that was rounded
- p preliminary
- r revised
- x suppressed to meet the confidentiality requirements of the *Statistics Act*
- E use with caution
- F too unreliable to be published

Acknowledgements

This publication was prepared by the Aviation Statistics Centre, of the Transportation Division, Statistics Canada under the general direction of **Gord Baldwin**, Director, Transportation Division. **Kathie Davidson**, **Maureen de Souza**, **Marc Trudel**, **John Scolli** and **Sylvie Savard** contributed to the preparation of this publication.

Table of contents

Highlights	5
Analysis	6
Related products	7
Statistical tables	
1 Total aircraft movements by class of operation	10
1-1 NAV CANADA towers	10
1-2 NAV CANADA flight service stations	11
2 Total aircraft movements, civil and military	12
2-1 NAV CANADA towers	12
2-2 NAV CANADA flight service stations	13
3 Itinerant movements by type of operator	14
3-1 NAV CANADA towers	14
3-2 NAV CANADA flight service stations	15
4 Itinerant movements by I.F.R. (Instrument flight rules) and V.F.R. (Visual flight rules) and runway 88 movements	16
4-1 NAV CANADA towers	16
4-2 NAV CANADA flight service stations	17
5 Itinerant movements by type of power plant	18
5-1 NAV CANADA towers	18
5-2 NAV CANADA flight service stations	19
6 Itinerant movements by aircraft weight group	20
6-1 NAV CANADA towers	20
6-2 NAV CANADA flight service stations	21
7 Itinerant movements, domestic, transborder and international	22
7-1 NAV CANADA towers	22
7-2 NAV CANADA flight service stations	26

Table of contents – continued

8	Total aircraft movements, peak hour and peak day	31
8-1	NAV CANADA towers	31
8-2	NAV CANADA flight service stations	32
9	Itinerant aircraft movements, peak hour and peak day	33
9-1	NAV CANADA towers	33
9-2	NAV CANADA flight service stations	34
10	Local movements, peak hour and peak day	35
10-1	NAV CANADA towers	35
10-2	NAV CANADA flight service stations	36
11	Local movements - civil, peak hour and peak day	37
11-1	NAV CANADA towers	37
11-2	NAV CANADA flight service stations	38
12	Local movements - military, peak hour and peak day	39
12-1	NAV CANADA towers	39
12-2	NAV CANADA flight service stations	40

Data quality, concepts and methodology

Methodology	41
Data quality and limitations	43

Appendix

I	Glossary of terms	44
---	-------------------	----

Highlights

- For the tenth consecutive month, aircraft take-offs and landings at Canadian airports with NAV CANADA air traffic control towers and flight service stations increased in year-over-year monthly comparisons. These 96 airports reported 485,477 movements in March 2007 compared with 466,092 movements at 97 airports in March 2006, an increase of 4.2% (+19,385 movements).
- Itinerant movements (flights from one airport to another) increased by 1.8% (+5,996 movements) in March 2007 compared with the same month a year earlier.
- Toronto/Lester B Pearson International was the most active airport for itinerant movements with 35,368 movements, up 0.9% (+329 movements) from March 2006.
- Local movements (flights that remain in the vicinity of the airport) increased by 9.8% (+13,389 movements) in March 2007 compared with March 2006.
- Calgary/Springbank airport was most active for local movements with 11,009 movements, up 35.2% (+2,869 movements) from March 2006.

Table 1
Distribution of aircraft movements at NAV CANADA Towers and Flight Service Stations

	NAV CANADA towers		NAV CANADA Flight Service Stations		Total	
	number	Change from March 2007/ March 2006 percent	number	Change from March 2007/ March 2006 percent	number	Change from March 2007/ March 2006 percent
Grand total	388,123	5.9	97,354	-2.2	485,477	4.2
Itinerant movements						
Air carriers	200,597	4.0	53,339	-1.9	253,936	2.7
Other commercial movements	32,277	2.1	4,928	0.7	37,205	1.9
Private movements	24,421	-2.5	7,734	-4.2	32,155	-2.9
Government civil movements	5,149	-0.8	1,892	-5.3	7,041	-2.0
Government military movements	3,483	-6.5	1,095	-9.7	4,578	-7.3
Itinerant total	265,927	2.9	68,988	-2.2	334,915	1.8
Local movements						
Civil local movements	120,694	13.0	28,250	-1.5	148,944	9.9
Military local movements	1,502	8.0	116	-61.1	1,618	-4.2
Local total	122,196	12.9	28,366	-2.1	150,562	9.8

Analysis

For the tenth consecutive month, aircraft take-offs and landings at Canadian airports with NAV CANADA air traffic control towers and flight service stations increased in year-over-year monthly comparisons. These 96 airports reported 485,477 movements in March 2007 compared with 466,092 movements at 97 airports in March 2006, an increase of 4.2% (+19,385 movements).

Itinerant movements (flights from one airport to another) increased by 1.8% (+5,996 movements) in March 2007 compared with the same month a year earlier.

Local movements (flights that remain in the vicinity of the airport) increased by 9.8% (+13,389 movements) in March 2007 compared with March 2006.

Airports with NAV CANADA air traffic control towers

The 42 Canadian airports with NAV CANADA air traffic control towers reported 388,123 aircraft take-offs and landings in March, up 5.9% compared with March 2006 (366,577 movements). Year-over-year increases in aircraft movements were reported by 28 of the airports in March 2007. The variations ranged from 91.5% at Moncton/Greater Moncton International to -40.9% at Chicoutimi/St-Honoré.

Itinerant movements (flights from one airport to another) increased by 2.9% (+7,544 movements) in March compared with the same month a year earlier. Year-over-year variations in itinerant movements ranged from a 53.8% increase (+581 movements) at Edmonton/Villeneuve to a decline of 45.4% (-1,512 movements) at Pitt Meadows, British Columbia.

Local movements (flights that remain in the vicinity of the airport) increased by 12.9% (+14,002 movements) in March compared with March 2006. Year-over-year variations in local movements ranged from a 154.9% increase (+3,503 movements) at Moncton/Greater Moncton International to a decline of 100% (-12 movements) at Vancouver International.

Airports with NAV CANADA flight service stations

The 54 Canadian airports with NAV CANADA flight service stations reported 97,354 aircraft take-offs and landings in March, down 2.2% compared with 55 flight service stations in March 2006 (99,515 movements). Year-over-year increases in aircraft movements were reported by 25 of these airports in March 2007. The variations ranged from 96.6% at Red Deer Regional to -31.4% at Fort St. John, British Columbia.

Itinerant movements (flights from one airport to another) decreased by 2.2% (-1,548 movements) in March compared with the same month a year earlier. Year-over-year variations in itinerant movements ranged from an 83.1% increase (+1,161 movements) at Red Deer Regional to a decline of 28.0% (-198 movements) at Dawson Creek, British Columbia.

Local movements (flights that remain in the vicinity of the airport) decreased by 2.1% (- 613 movements) in March compared with March 2006. Red Deer Regional showed the largest increase in local movements in March 2007 compared with March 2006, increasing by 1,140 movements (+115.6%) to reach 2,126 movements.

Related products

Selected CANSIM tables from Statistics Canada

401-0005	Aircraft movements by class of operation, airports with NAV CANADA towers, preliminary, monthly
401-0006	Aircraft movements by class of operation, airports with NAV CANADA towers, preliminary, annual
401-0007	Aircraft movements, by class of operation and peak hour and peak day of movements, airports with NAV CANADA towers, monthly
401-0008	Aircraft movements, by civil and military movements, airports with NAV CANADA towers, monthly
401-0009	Itinerant movements, by type of operation, airports with NAV CANADA towers, monthly
401-0010	Itinerant movements, by instrument flight rules, visual flight rules and runway 88, airports with NAV CANADA towers, monthly
401-0011	Itinerant movements, by type of power plant, airports with NAV CANADA towers, monthly
401-0012	Itinerant movements, by aircraft gross take-off weight, airports with NAV CANADA towers, monthly
401-0013	Domestic and international itinerant movements, by type of operation, airports with NAV CANADA towers, monthly
401-0014	Aircraft movements, by class of operation and peak hour and peak day of movements, airports with NAV CANADA flight service stations, monthly
401-0015	Aircraft movements, by civil and military movements, airports with NAV CANADA flight service stations, monthly
401-0016	Itinerant movements, by type of operation, airports with NAV CANADA flight service stations, monthly
401-0017	Itinerant movements, by instrument flight rules, visual flight rules and runway 88, airports with NAV CANADA flight service stations, monthly
401-0018	Itinerant movements, by type of power plant, airports with NAV CANADA flight service stations, monthly
401-0019	Itinerant movements, by aircraft gross take-off weight, airports with NAV CANADA flight service stations, monthly
401-0020	Domestic and international itinerant movements, by type of operation, airports with NAV CANADA flight service stations, monthly

Selected surveys from Statistics Canada

2715	Aircraft Movement Statistics
------	------------------------------

Selected summary tables from Statistics Canada

- *Aircraft movements by class of operation (monthly)*

Statistical tables

Table 1-1
Total aircraft movements by class of operation — NAV CANADA towers

	Total		Itinerant		Local	
	Rank of movements	Number of movements	Rank of movements	Number of movements	Rank of movements	Number of movements
Abbotsford	6	16,595	10	6,505	3	10,090
Boundary Bay	7	15,991	15	5,737	2	10,254
Calgary International	3	20,780	3	20,579	37	201
Calgary/Springbank	5	17,018	14	6,009	1	11,009
Chicoutimi/St-Honoré	34	4,468	40	1,463	18	3,005
Edmonton City Centre	19	7,602	12	6,140	27	1,462
Edmonton International	14	11,248	6	10,768	35	480
Edmonton/Villeneuve	22	7,271	39	1,661	8	5,610
Gander International	39	2,354	37	1,748	33	606
Halifax/Robert L Stanfield International	23	7,095	11	6,455	31	640
Hamilton	28	5,578	25	3,479	23	2,099
Kelowna	17	8,211	20	4,749	13	3,462
Kitchener/Waterloo	24	6,857	26	3,263	11	3,594
Langley	29	5,354	34	2,181	16	3,173
London	20	7,548	22	4,490	17	3,058
Moncton/Greater Moncton International	13	11,442	16	5,678	7	5,764
Montréal/Mirabel International	40	2,100	38	1,682	36	418
Montréal/Pierre Elliott Trudeau International	4	18,332	4	18,332	0	0
Montréal/St-Hubert	12	11,871	18	5,148	4	6,723
Oshawa	26	5,886	31	2,294	12	3,592
Ottawa/Macdonald-Cartier International	11	11,943	7	9,573	21	2,370
Pitt Meadows	31	5,150	36	1,818	14	3,332
Prince George	36	3,355	33	2,199	28	1,156
Québec/Jean Lesage International	16	8,836	9	6,736	22	2,100
Regina International	30	5,213	24	3,683	26	1,530
Saskatoon/John G Diefenbaker International	15	9,371	17	5,671	10	3,700
Sault Ste. Marie	32	5,059	32	2,223	19	2,836
St. John's International	37	3,267	29	3,123	38	144
St-Jean	42	1,615	42	981	32	634
Sudbury	38	3,217	30	2,450	30	767
Thunder Bay	21	7,497	21	4,673	20	2,824
Toronto/Buttonville Municipal	9	12,741	13	6,077	5	6,664
Toronto/City Centre	25	6,437	27	3,178	15	3,259
Toronto/Lester B Pearson International	1	35,368	1	35,368	0	0
Vancouver Harbour	33	5,025	19	5,019	39	6
Vancouver International	2	25,777	2	25,777	0	0
Victoria International	8	13,284	8	7,379	6	5,905
Whitehorse International	41	1,737	41	1,197	34	540
Windsor	35	4,102	35	2,126	24	1,976
Winnipeg/James Armstrong Richardson International	10	11,982	5	11,089	29	893
Winnipeg/St. Andrews	18	7,756	28	3,140	9	4,616
Yellowknife	27	5,790	23	4,086	25	1,704
Total of NAV CANADA towers (42)	.	388,123	.	265,927	.	122,196

Table 1-2
Total aircraft movements by class of operation — NAV CANADA flight service stations

	Total		Itinerant		Local	
	Rank of movements	Number of movements	Rank of movements	Number of movements	Rank of movements	Number of movements
Brandon Municipal	28	1,547	41	797	15	750
Campbell River	8	3,082	17	1,508	4	1,574
Castlegar	31	1,336	47	612	16	724
Charlottetown	29	1,485	22	1,103	21	382
Churchill	46	705	45	679	45	26
Cranbrook	34	1,227	33	929	24	298
Dawson Creek	49	600	51	508	37	92
Deer Lake	23	1,783	19	1,491	26	292
Fort McMurray	3	4,430	1	3,928	17	502
Fort Nelson	36	1,008	30	968	42	40
Fort St John	6	3,097	10	1,919	8	1,178
Fredericton International	24	1,683	18	1,497	29	186
Grande Prairie	9	2,937	4	2,543	20	394
High Level	22	1,888	38	842	13	1,046
Îles-de-la-Madeleine	50	581	49	581	0	0
Inuvik/Mike Zubko	43	859	39	827	43	32
Iqaluit	35	1,196	24	1,096	35	100
Kamloops	7	3,092	8	1,958	9	1,134
Kenora	44	849	42	767	39	82
Kingston	14	2,588	16	1,537	12	1,051
Kuujuuaq	39	930	36	852	40	78
Kuujuarapik	52	484	52	484	0	0
La Grande Rivière	45	715	44	685	44	30
La Ronge	21	1,997	14	1,703	25	294
Lethbridge	11	2,831	13	1,729	10	1,102
Lloydminster	33	1,274	35	868	19	406
Medicine Hat	30	1,462	23	1,097	22	365
Mont-Joli	54	319	53	319	0	0
Nanaimo	12	2,797	11	1,847	14	950
Norman Wells	38	947	32	931	47	16
North Bay	1	4,948	7	2,022	1	2,926
Ottawa/Gatineau	17	2,317	31	949	6	1,368
Peace River	27	1,549	25	1,075	18	474
Penticton	10	2,836	20	1,474	7	1,362
Port Hardy	41	887	40	803	38	84
Prince Albert	25	1,658	15	1,548	33	110
Prince Rupert	53	374	54	310	41	64
Rankin Inlet	40	921	34	903	46	18
Red Deer Regional	2	4,684	3	2,558	3	2,126
Rouyn-Noranda	37	1,007	37	851	31	156
Saint John	26	1,656	21	1,344	23	312
Sept-Îles	20	2,002	12	1,810	28	192
Sioux Lookout	13	2,603	5	2,439	30	164
Smithers	48	614	48	606	48	8
St Anthony	51	511	50	509	50	2
St Catharines	16	2,391	27	1,019	5	1,372
Terrace	32	1,299	26	1,061	27	238
Thompson	15	2,438	6	2,346	36	92
Timmins	18	2,054	9	1,922	32	132
Val-D'or	19	2,027	29	973	11	1,054
Victoria Harbour	5	3,472	2	3,466	49	6
Wabush	47	653	46	653	0	0
Whitecourt	4	3,860	28	980	2	2,880
Williams Lake	42	864	43	762	34	102
Total of all flight service stations (54)	.	97,354	.	68,988	.	28,366

Table 2-1
Total aircraft movements, civil and military — NAV CANADA towers

	Civil movements			Military movements				
	Total	Itinerant		Local	Total	Itinerant		Local
		Commercial	Private and government					
	number							
Abbotsford	16,548	5,150	1,308	10,090	47	47	0	
Boundary Bay	15,988	4,770	964	10,254	3	3	0	
Calgary International	20,666	19,102	1,396	168	114	81	33	
Calgary/Springbank	16,920	4,085	1,832	11,003	98	92	6	
Chicoutimi/St-Honoré	4,466	1,369	92	3,005	2	2	0	
Edmonton City Centre	7,568	4,407	1,703	1,458	34	30	4	
Edmonton International	11,172	10,349	361	462	76	58	18	
Edmonton/Villeneuve	7,271	1,258	403	5,610	0	0	0	
Gander International	1,996	1,214	314	468	358	220	138	
Halifax/Robert L. Stanfield International	6,601	5,834	371	396	494	250	244	
Hamilton	5,562	2,857	608	2,097	16	14	2	
Kelowna	8,189	4,126	603	3,460	22	20	2	
Kitchener/Waterloo	6,765	2,439	752	3,574	92	72	20	
Langley	5,347	1,372	802	3,173	7	7	0	
London	7,463	3,189	1,246	3,028	85	55	30	
Moncton/Greater Moncton International	11,348	5,281	335	5,732	94	62	32	
Montréal/Mirabel International	2,016	1,372	244	400	84	66	18	
Montréal/Pierre Elliott Trudeau International	18,302	16,891	1,411	0	30	30	0	
Montréal/St-Hubert	11,719	3,778	1,226	6,715	152	144	8	
Oshawa	5,876	1,646	638	3,592	10	10	0	
Ottawa/Macdonald-Cartier International	11,733	8,455	932	2,346	210	186	24	
Pitt Meadows	5,147	1,186	629	3,332	3	3	0	
Prince George	3,355	1,797	402	1,156	0	0	0	
Québec/Jean Lesage International	8,620	5,627	895	2,098	216	214	2	
Regina International	4,861	2,923	510	1,428	352	250	102	
Saskatoon/John G. Diefenbaker International	9,067	4,678	737	3,652	304	256	48	
Sault Ste. Marie	5,055	2,058	161	2,836	4	4	0	
St. John's International	3,064	2,686	234	144	203	203	0	
St-Jean	1,469	535	300	634	146	146	0	
Sudbury	3,197	2,147	283	767	20	20	0	
Thunder Bay	7,464	4,275	375	2,814	33	23	10	
Toronto/Buttonville Municipal	12,739	4,335	1,740	6,664	2	2	0	
Toronto/City Centre	6,417	2,810	348	3,259	20	20	0	
Toronto/Lester B. Pearson International	35,348	33,986	1,362	0	20	20	0	
Vancouver Harbour	5,025	4,958	61	6	0	0	0	
Vancouver International	25,766	24,611	1,155	0	11	11	0	
Victoria International	12,689	6,146	1,115	5,428	595	118	477	
Whitehorse International	1,722	983	203	536	15	11	4	
Windsor	4,090	1,772	342	1,976	12	12	0	
Winnipeg/James Armstrong Richardson International	11,194	9,789	668	737	788	632	156	
Winnipeg/St. Andrews	7,730	2,770	344	4,616	26	26	0	
Yellowknife	5,603	3,858	165	1,580	187	63	124	
Total of NAV CANADA towers (42)	383,138	232,874	29,570	120,694	4,985	3,483	1,502	

Table 2-2
Total aircraft movements, civil and military — NAV CANADA flight service stations

	Civil movements				Military movements		
	Total	Itinerant		Local	Total	Itinerant	Local
		Commercial	Private and government				
	number						
Brandon Municipal	1,277	440	147	690	270	210	60
Campbell River	3,065	1,173	318	1,574	17	17	0
Castlegar	1,330	544	62	724	6	6	0
Charlottetown	1,437	839	226	372	48	38	10
Churchill	701	649	26	26	4	4	0
Cranbrook	1,217	780	139	298	10	10	0
Dawson Creek	600	435	73	92	0	0	0
Deer Lake	1,733	1,428	39	266	50	24	26
Fort McMurray	4,424	3,441	481	502	6	6	0
Fort Nelson	1,000	834	126	40	8	8	0
Fort St John	3,097	1,747	172	1,178	0	0	0
Fredericton International	1,516	1,164	186	166	167	147	20
Grande Prairie	2,937	2,053	490	394	0	0	0
High Level	1,888	795	47	1,046	0	0	0
Îles-de-la-Madeleine	573	511	62	0	8	8	0
Inuvik/Mike Zubko	848	785	31	32	11	11	0
Iqaluit	1,190	1,012	78	100	6	6	0
Kamloops	3,071	1,585	352	1,134	21	21	0
Kenora	803	669	52	82	46	46	0
Kingston	2,550	1,182	317	1,051	38	38	0
Kuujuaq	930	817	35	78	0	0	0
Kuujuarapik	482	478	4	0	2	2	0
La Grande Rivière	715	659	26	30	0	0	0
La Ronge	1,980	1,566	120	294	17	17	0
Lethbridge	2,809	1,242	465	1,102	22	22	0
Lloydminster	1,268	582	280	406	6	6	0
Medicine Hat	1,449	871	213	365	13	13	0
Mont-Joli	313	270	43	0	6	6	0
Nanaimo	2,775	1,166	659	950	22	22	0
Norman Wells	945	913	16	16	2	2	0
North Bay	4,932	1,670	336	2,926	16	16	0
Ottawa/Gatineau	2,291	543	380	1,368	26	26	0
Peace River	1,549	978	97	474	0	0	0
Penticton	2,736	1,094	280	1,362	100	100	0
Port Hardy	863	658	121	84	24	24	0
Prince Albert	1,628	1,342	176	110	30	30	0
Prince Rupert	372	250	58	64	2	2	0
Rankin Inlet	921	893	10	18	0	0	0
Red Deer Regional	4,674	1,833	715	2,126	10	10	0
Rouyn-Noranda	1,007	665	186	156	0	0	0
Saint John	1,592	988	292	312	64	64	0
Sept-Îles	1,998	1,687	119	192	4	4	0
Sioux Lookout	2,601	2,422	15	164	2	2	0
Smithers	612	501	103	8	2	2	0
St Anthony	507	441	64	2	4	4	0
St Catharines	2,282	589	321	1,372	109	109	0
Terrace	1,299	1,030	31	238	0	0	0
Thompson	2,438	2,217	129	92	0	0	0
Timmins	2,054	1,736	186	132	0	0	0
Val-D'or	2,027	807	166	1,054	0	0	0
Victoria Harbour	3,468	3,128	334	6	4	4	0
Wabush	651	619	32	0	2	2	0
Whitecourt	3,856	921	55	2,880	4	4	0
Williams Lake	862	625	135	102	2	2	0
Total of all flight service stations (54)	96,143	58,267	9,626	28,250	1,211	1,095	116

Table 3-1
Itinerant movements by type of operator — NAV CANADA towers

	Total	Air carrier movements		Other commercial movements	Private movements	Government movements	
		Levels I to III and foreign	Levels IV to VI			Civil	Military
	number						
Abbotsford	6,505	737	2,807	1,606	802	506	47
Boundary Bay	5,737	7	912	3,851	897	67	3
Calgary International	20,579	17,274	1,047	781	1,221	175	81
Calgary/Springbank	6,009	38	1,014	3,033	1,768	64	92
Chicoutimi/St-Honoré	1,463	9	475	885	87	5	2
Edmonton City Centre	6,140	1,866	807	1,734	1,304	399	30
Edmonton International	10,768	9,722	462	165	315	46	58
Edmonton/Villeneuve	1,661	3	360	895	403	0	0
Gander International	1,748	421	757	36	272	42	220
Halifax/Robert L Stanfield International	6,455	5,264	525	45	301	70	250
Hamilton	3,479	1,838	935	84	486	122	14
Kelowna	4,749	2,572	367	1,187	497	106	20
Kitchener/Waterloo	3,263	336	1,498	605	740	12	72
Langley	2,181	117	211	1,044	786	16	7
London	4,490	1,168	614	1,407	1,157	89	55
Moncton/Greater Moncton International	5,678	5,214	45	22	118	217	62
Montréal/Mirabel International	1,682	1,038	297	37	220	24	66
Montréal/Pierre Elliott Trudeau International	18,332	15,895	636	360	1,209	202	30
Montréal/St-Hubert	5,148	2,169	423	1,186	1,106	120	144
Oshawa	2,294	128	80	1,438	635	3	10
Ottawa/Macdonald-Cartier International	9,573	6,737	392	1,326	358	574	186
Pitt Meadows	1,818	16	543	627	627	2	3
Prince George	2,199	1,353	323	121	290	112	0
Québec/Jean Lesage International	6,736	3,713	814	1,100	616	279	214
Regina International	3,683	2,115	759	49	309	201	250
Saskatoon/John G Diefenbaker International	5,671	3,000	1,166	512	369	368	256
Sault Ste. Marie	2,223	832	194	1,032	132	29	4
St. John's International	3,123	1,248	1,368	70	93	141	203
St-Jean	981	170	164	201	278	22	146
Sudbury	2,450	1,408	641	98	233	50	20
Thunder Bay	4,673	2,709	1,087	479	279	96	23
Toronto/Buttonville Municipal	6,077	413	749	3,173	1,682	58	2
Toronto/City Centre	3,178	980	693	1,137	330	18	20
Toronto/Lester B Pearson International	35,368	33,352	429	205	1,318	44	20
Vancouver Harbour	5,019	4,651	294	13	61	0	0
Vancouver International	25,777	22,810	1,517	284	923	232	11
Victoria International	7,379	3,241	2,191	714	1,067	48	118
Whitehorse International	1,197	644	318	21	161	42	11
Windsor	2,126	715	1,008	49	314	28	12
Winnipeg/James Armstrong Richardson International	11,089	8,968	774	47	307	361	632
Winnipeg/St. Andrews	3,140	413	1,742	615	283	61	26
Yellowknife	4,086	3,239	616	3	67	98	63
Total of NAV CANADA towers (42)	265,927	168,543	32,054	32,277	24,421	5,149	3,483

Table 3-2
Itinerant movements by type of operator — NAV CANADA flight service stations

	Total	Air carrier movements		Other commercial movements	Private movements	Government movements	
		Levels I to III and foreign	Levels IV to VI			Civil	Military
	number						
Brandon Municipal	797	171	225	44	133	14	210
Campbell River	1,508	650	398	125	290	28	17
Castlegar	612	304	87	153	56	6	6
Charlottetown	1,103	652	53	134	120	106	38
Churchill	679	637	12	0	18	8	4
Cranbrook	929	627	47	106	129	10	10
Dawson Creek	508	300	118	17	51	22	0
Deer Lake	1,491	750	622	56	13	26	24
Fort McMurray	3,928	2,408	613	420	437	44	6
Fort Nelson	968	444	268	122	108	18	8
Fort St John	1,919	924	663	160	163	9	0
Fredericton International	1,497	944	208	12	123	63	147
Grande Prairie	2,543	1,623	425	5	472	18	0
High Level	842	646	149	0	27	20	0
Îles-de-la-Madeleine	581	327	166	18	8	54	8
Inuvik/Mike Zubko	827	261	524	0	6	25	11
Iqaluit	1,096	954	30	28	43	35	6
Kamloops	1,958	966	294	325	276	76	21
Kenora	767	404	190	75	34	18	46
Kingston	1,537	491	370	321	275	42	38
Kuujuaq	852	799	18	0	4	31	0
Kuujuarapik	484	470	8	0	2	2	2
La Grande Rivière	685	515	142	2	8	18	0
La Ronge	1,703	1,526	21	19	32	88	17
Lethbridge	1,729	665	35	542	452	13	22
Lloydminster	868	220	340	22	250	30	6
Medicine Hat	1,097	740	87	44	205	8	13
Mont-Joli	319	258	4	8	16	27	6
Nanaimo	1,847	477	457	232	584	75	22
Norman Wells	931	749	164	0	10	6	2
North Bay	2,022	562	472	636	275	61	16
Ottawa/Gatineau	949	183	235	125	330	50	26
Peace River	1,075	709	221	48	85	12	0
Penticton	1,474	356	627	111	253	27	100
Port Hardy	803	572	80	6	70	51	24
Prince Albert	1,548	1,143	150	49	75	101	30
Prince Rupert	310	189	57	4	12	46	2
Rankin Inlet	903	860	33	0	0	10	0
Red Deer Regional	2,558	387	1,166	280	683	32	10
Rouyn-Noranda	851	515	128	22	152	34	0
Saint John	1,344	791	87	110	282	10	64
Sept-Îles	1,810	1,252	397	38	40	79	4
Sioux Lookout	2,439	1,620	768	34	15	0	2
Smithers	606	415	86	0	79	24	2
St Anthony	509	122	261	58	4	60	4
St Catharines	1,019	17	485	87	305	16	109
Terrace	1,061	612	418	0	10	21	0
Thompson	2,346	1,776	429	12	19	110	0
Timmins	1,922	1,566	154	16	157	29	0
Val-D'or	973	700	80	27	142	24	0
Victoria Harbour	3,466	3,082	44	2	219	115	4
Wabush	653	346	261	12	16	16	2
Whitecourt	980	85	647	189	45	10	4
Williams Lake	762	388	165	72	121	14	2
Total of all flight service stations (54)	68,988	39,150	14,189	4,928	7,734	1,892	1,095

Table 4-1

**Itinerant movements by I.F.R. (Instrument flight rules) and V.F.R. (Visual flight rules) and runway 88 movements
— NAV CANADA towers**

	Itinerant movements				Runway 88 flights	
	Total of IFR and VFR flights ¹	IFR	IFR flights, as percentage of total flights	VFR		VFR flights, as percentage of total flights
	number		percent	number		percent
Abbotsford	6,505	1,808	27.7	4,697	72.2	1,571
Boundary Bay	5,737	421	7.3	5,316	92.6	431
Calgary International	20,579	19,052	92.5	1,527	7.4	707
Calgary/Springbank	6,009	229	3.8	5,780	96.1	3,563
Chicoutimi/St-Honoré	1,463	87	5.9	1,376	94.0	21
Edmonton City Centre	6,140	3,021	49.2	3,119	50.7	2,875
Edmonton International	10,768	10,007	92.9	761	7.0	1,252
Edmonton/Villeneuve	1,661	16	0.9	1,645	99.0	146
Gander International	1,748	1,277	73.0	471	26.9	52
Halifax/Robert L Stanfield International	6,455	5,934	91.9	521	8.0	480
Hamilton	3,479	2,415	69.4	1,064	30.5	750
Kelowna	4,749	2,955	62.2	1,794	37.7	525
Kitchener/Waterloo	3,263	661	20.2	2,602	79.7	442
Langley	2,181	22	1.0	2,159	98.9	2,911
London	4,490	1,409	31.3	3,081	68.6	372
Moncton/Greater Moncton International	5,678	2,090	36.8	3,588	63.1	68
Montréal/Mirabel International	1,682	1,143	67.9	539	32.0	566
Montréal/Pierre Elliott Trudeau International	18,332	17,708	96.5	624	3.4	2,297
Montréal/St-Hubert	5,148	1,244	24.1	3,904	75.8	1,099
Oshawa	2,294	120	5.2	2,174	94.7	640
Ottawa/Macdonald-Cartier International	9,573	7,550	78.8	2,023	21.1	532
Pitt Meadows	1,818	16	0.8	1,802	99.1	1,476
Prince George	2,199	1,426	64.8	773	35.1	269
Québec/Jean Lesage International	6,736	4,298	63.8	2,438	36.1	582
Regina International	3,683	2,545	69.1	1,138	30.8	50
Saskatoon/John G Diefenbaker International	5,671	3,465	61.1	2,206	38.8	44
Sault Ste. Marie	2,223	1,060	47.6	1,163	52.3	113
St. John's International	3,123	2,811	90.0	312	9.9	49
St-Jean	981	297	30.2	684	69.7	211
Sudbury	2,450	1,755	71.6	695	28.3	201
Thunder Bay	4,673	3,415	73.0	1,258	26.9	150
Toronto/Butterville Municipal	6,077	835	13.7	5,242	86.2	437
Toronto/City Centre	3,178	1,151	36.2	2,027	63.7	2,302
Toronto/Lester B Pearson International	35,368	35,196	99.5	172	0.4	130
Vancouver Harbour	5,019	68	1.3	4,951	98.6	1,869
Vancouver International	25,777	20,532	79.6	5,245	20.3	10,205
Victoria International	7,379	3,544	48.0	3,835	51.9	7,985
Whitehorse International	1,197	616	51.4	581	48.5	255
Windsor	2,126	903	42.4	1,223	57.5	74
Winnipeg/James Armstrong Richardson International	11,089	9,579	86.3	1,510	13.6	897
Winnipeg/St. Andrews	3,140	71	2.2	3,069	97.7	88
Yellowknife	4,086	2,101	51.4	1,985	48.5	956
Total of NAV CANADA towers (42)	265,927	174,853	65.8	91,074	34.2	49,643

1. Total excludes runway 88 flights.

Table 4-2

Itinerant movements by I.F.R. (Instrument flight rules) and V.F.R. (Visual flight rules) and runway 88 movements — NAV CANADA flight service stations

	Itinerant movements				Runway 88 flights number	
	Total of IFR and VFR flights ¹	IFR	IFR flights, as percentage of total flights	VFR		VFR flights, as percentage of total flights
	number		percent	number		percent
Brandon Municipal	797	222	27.8	575	72.1	12
Campbell River	1,508	536	35.5	972	64.4	243
Castlegar	612	335	54.7	277	45.2	118
Charlottetown	1,103	662	60.0	441	39.9	16
Churchill	679	615	90.5	64	9.4	29
Cranbrook	929	681	73.3	248	26.6	117
Dawson Creek	508	278	54.7	230	45.2	16
Deer Lake	1,491	1,271	85.2	220	14.7	23
Fort McMurray	3,928	2,160	54.9	1,768	45.0	9
Fort Nelson	968	505	52.1	463	47.8	76
Fort St John	1,919	920	47.9	999	52.0	43
Fredericton International	1,497	871	58.1	626	41.8	65
Grande Prairie	2,543	1,797	70.6	746	29.3	65
High Level	842	516	61.2	326	38.7	302
Îles-de-la-Madeleine	581	409	70.3	172	29.6	331
Inuvik/Mike Zubko	827	254	30.7	573	69.2	0
Iqaluit	1,096	837	76.3	259	23.6	0
Kamloops	1,958	1,193	60.9	765	39.0	224
Kenora	767	423	55.1	344	44.8	111
Kingston	1,537	614	39.9	923	60.0	91
Kuujuuaq	852	407	47.7	445	52.2	2
Kuujuuarapik	484	309	63.8	175	36.1	1
La Grande Rivière	685	488	71.2	197	28.7	143
La Ronge	1,703	741	43.5	962	56.4	190
Lethbridge	1,729	725	41.9	1,004	58.0	33
Lloydminster	868	322	37.0	546	62.9	55
Medicine Hat	1,097	570	51.9	527	48.0	140
Mont-Joli	319	268	84.0	51	15.9	14
Nanaimo	1,847	633	34.2	1,214	65.7	2,042
Norman Wells	931	177	19.0	754	80.9	14
North Bay	2,022	726	35.9	1,296	64.0	213
Ottawa/Gatineau	949	173	18.2	776	81.7	77
Peace River	1,075	613	57.0	462	42.9	122
Penticton	1,474	340	23.0	1,134	76.9	130
Port Hardy	803	238	29.6	565	70.3	289
Prince Albert	1,548	1,167	75.3	381	24.6	41
Prince Rupert	310	218	70.3	92	29.6	19
Rankin Inlet	903	734	81.2	169	18.7	0
Red Deer Regional	2,558	537	20.9	2,021	79.0	281
Rouyn-Noranda	851	668	78.4	183	21.5	36
Saint John	1,344	996	74.1	348	25.8	18
Sept-Îles	1,810	1,337	73.8	473	26.1	180
Sioux Lookout	2,439	1,519	62.2	920	37.7	356
Smithers	606	442	72.9	164	27.0	160
St Anthony	509	246	48.3	263	51.6	1
St Catharines	1,019	82	8.0	937	91.9	196
Terrace	1,061	628	59.1	433	40.8	184
Thompson	2,346	1,268	54.0	1,078	45.9	50
Timmins	1,922	1,523	79.2	399	20.7	98
Val-D'or	973	677	69.5	296	30.4	130
Victoria Harbour	3,466	111	3.2	3,355	96.7	320
Wabush	653	612	93.7	41	6.2	91
Whitecourt	980	115	11.7	865	88.2	71
Williams Lake	762	436	57.2	326	42.7	174
Total of all flight service stations (54)	68,988	35,145	50.9	33,843	49.1	7,762

1. Total excludes runway 88 flights.

Table 5-1
Itinerant movements by type of power plant — NAV CANADA towers

	Total	Jet engines	Turbo-propellers	Piston engines	Helicopters	Gliders
	number					
Abbotsford	6,505	627	722	3,539	1,614	3
Boundary Bay	5,737	4	32	5,487	213	1
Calgary International	20,579	13,103	5,814	1,201	461	0
Calgary/Springbank	6,009	7	186	4,759	1,057	0
Chicoutimi/St-Honoré	1,463	6	19	1,097	339	2
Edmonton City Centre	6,140	566	2,297	2,506	770	1
Edmonton International	10,768	6,414	3,596	719	39	0
Edmonton/Villeneuve	1,661	9	13	1,269	370	0
Gander International	1,748	576	645	268	259	0
Halifax/Robert L Stanfield International	6,455	3,833	1,846	400	376	0
Hamilton	3,479	1,431	888	1,076	84	0
Kelowna	4,749	1,650	1,189	1,340	570	0
Kitchener/Waterloo	3,263	159	378	2,412	314	0
Langley	2,181	0	103	1,457	621	0
London	4,490	344	1,413	2,536	196	1
Moncton/Greater Moncton International	5,678	1,102	893	3,612	71	0
Montréal/Mirabel International	1,682	683	543	380	76	0
Montréal/Pierre Elliott Trudeau International	18,332	12,342	5,233	502	255	0
Montréal/St-Hubert	5,148	141	797	3,675	534	1
Oshawa	2,294	4	64	2,125	101	0
Ottawa/Macdonald-Cartier International	9,573	5,375	2,185	1,669	344	0
Pitt Meadows	1,818	0	12	1,590	216	0
Prince George	2,199	533	1,054	225	387	0
Québec/Jean Lesage International	6,736	1,234	2,651	1,976	863	12
Regina International	3,683	1,551	802	1,281	49	0
Saskatoon/John G Diefenbaker International	5,671	1,493	1,863	2,244	71	0
Sault Ste. Marie	2,223	20	965	1,217	21	0
St. John's International	3,123	1,096	1,452	84	491	0
St-Jean	981	2	145	749	30	55
Sudbury	2,450	42	1,618	518	272	0
Thunder Bay	4,673	874	2,749	764	286	0
Toronto/Buttonville Municipal	6,077	127	535	4,935	480	0
Toronto/City Centre	3,178	0	1,110	1,771	297	0
Toronto/Lester B Pearson International	35,368	29,438	5,834	56	40	0
Vancouver Harbour	5,019	0	2,533	1,553	933	0
Vancouver International	25,777	12,351	9,181	3,169	1,076	0
Victoria International	7,379	1,049	2,451	3,487	392	0
Whitehorse International	1,197	413	316	318	150	0
Windsor	2,126	149	703	1,236	38	0
Winnipeg/James Armstrong Richardson International	11,089	5,272	4,443	1,122	252	0
Winnipeg/St. Andrews	3,140	2	209	2,726	203	0
Yellowknife	4,086	799	2,479	276	532	0
Total of NAV CANADA towers (42)	265,927	104,821	71,961	73,326	15,743	76

Table 5-2
Itinerant movements by type of power plant — NAV CANADA flight service stations

	Total	Jet engines	Turbo-propellers	Piston engines	Helicopters	Gliders
	number					
Brandon Municipal	797	36	285	386	90	0
Campbell River	1,508	40	692	324	452	0
Castlegar	612	20	321	199	72	0
Charlottetown	1,103	152	396	421	134	0
Churchill	679	23	636	10	10	0
Cranbrook	929	53	586	270	20	0
Dawson Creek	508	12	325	59	112	0
Deer Lake	1,491	204	1,058	147	82	0
Fort McMurray	3,928	925	1,498	869	636	0
Fort Nelson	968	30	472	249	217	0
Fort St John	1,919	249	736	247	687	0
Fredericton International	1,497	327	483	484	203	0
Grande Prairie	2,543	184	1,460	609	290	0
High Level	842	8	623	68	143	0
Îles-de-la-Madeleine	581	12	384	159	26	0
Inuvik/Mike Zubko	827	122	475	32	198	0
Iqaluit	1,096	317	748	9	22	0
Kamloops	1,958	63	1,007	571	317	0
Kenora	767	18	438	174	137	0
Kingston	1,537	42	564	836	95	0
Kuujuuaq	852	153	681	2	16	0
Kuujuuarapik	484	2	472	2	8	0
La Grande Rivière	685	18	649	6	12	0
La Ronge	1,703	4	1,272	370	57	0
Lethbridge	1,729	69	683	956	21	0
Lloydminster	868	10	268	532	58	0
Medicine Hat	1,097	14	566	466	51	0
Mont-Joli	319	25	252	36	6	0
Nanaimo	1,847	15	506	1,201	124	1
Norman Wells	931	149	495	171	116	0
North Bay	2,022	37	739	764	482	0
Ottawa/Gatineau	949	8	148	702	89	2
Peace River	1,075	18	608	214	235	0
Penticton	1,474	23	374	516	561	0
Port Hardy	803	6	527	133	137	0
Prince Albert	1,548	8	1,160	301	79	0
Prince Rupert	310	26	195	17	72	0
Rankin Inlet	903	140	730	0	33	0
Red Deer Regional	2,558	24	531	1,805	198	0
Rouyn-Noranda	851	78	637	118	18	0
Saint John	1,344	291	578	411	64	0
Sept-Îles	1,810	38	1,207	363	202	0
Sioux Lookout	2,439	0	2,298	117	24	0
Smithers	606	20	459	31	96	0
St Anthony	509	4	389	56	60	0
St Catharines	1,019	27	35	776	181	0
Terrace	1,061	28	611	2	420	0
Thompson	2,346	16	1,829	267	234	0
Timmins	1,922	17	1,562	292	51	0
Val-D'or	973	83	639	159	92	0
Victoria Harbour	3,466	0	2,257	250	959	0
Wabush	653	16	578	32	27	0
Whitecourt	980	6	128	145	701	0
Williams Lake	762	18	410	205	129	0
Total of all flight service stations (54)	68,988	4,228	37,660	17,541	9,556	3

Table 6-1
Itinerant movements by aircraft weight group — NAV CANADA towers

	Gross take-off weight in kilograms									
	2 000 and under	2 001 to 4 000	4 001 to 5 670	5 671 to 9 000	9 001 to 18 000	18 001 to 35 000	35 001 to 70 000	70 001 to 90 000	90 001 to 136 000	136 001 and over
	number									
Abbotsford	4,416	466	362	126	32	601	495	7	0	0
Boundary Bay	5,409	278	38	5	5	2	0	0	0	0
Calgary International	1,017	759	2,118	2,649	929	3,894	7,018	934	648	613
Calgary/Springbank	5,531	312	166	0	0	0	0	0	0	0
Chicoutimi/St-Honoré	1,288	149	19	4	1	2	0	0	0	0
Edmonton City Centre	2,776	525	1,762	831	206	40	0	0	0	0
Edmonton International	528	307	910	1,091	447	2,674	3,861	543	267	140
Edmonton/Villeneuve	1,566	32	57	6	0	0	0	0	0	0
Gander International	364	18	147	381	422	155	54	53	56	98
Halifax/Robert L. Stanfield International	143	290	456	929	960	1,195	1,580	461	236	205
Hamilton	975	384	342	293	248	178	392	37	624	6
Kelowna	1,757	104	258	672	58	903	956	0	41	0
Kitchener/Waterloo	2,525	210	175	61	233	24	8	27	0	0
Langley	2,001	149	25	0	0	0	6	0	0	0
London	2,850	181	291	52	699	218	161	37	1	0
Moncton/Greater Moncton International	3,493	241	359	364	126	579	214	4	290	8
Montréal/Mirabel International	301	196	98	243	52	238	75	9	356	114
Montréal/Pierre Elliott Trudeau International	505	242	554	1,161	3,164	5,227	4,045	1,551	22	1,861
Montréal/St-Hubert	3,524	584	737	108	145	23	15	0	12	0
Oshawa	2,082	140	48	4	12	2	2	4	0	0
Ottawa/Macdonald-Cartier International	1,679	153	942	313	820	2,614	1,658	986	227	181
Pitt Meadows	1,766	32	16	4	0	0	0	0	0	0
Prince George	495	162	280	700	13	380	169	0	0	0
Québec/Jean Lesage International	2,162	608	839	154	1,382	1,282	134	2	36	137
Regina International	1,015	361	447	358	99	552	741	1	99	10
Saskatoon/John G. Diefenbaker International	1,703	667	832	664	251	732	758	2	51	11
Sault Ste. Marie	1,166	154	493	55	93	258	4	0	0	0
St. John's International	51	35	330	734	766	130	714	258	77	28
St-Jean	720	109	138	8	4	0	2	0	0	0
Sudbury	496	352	1,097	116	176	185	14	12	2	0
Thunder Bay	872	145	2,389	196	177	635	249	10	0	0
Toronto/Buttonville Municipal	4,971	478	448	85	55	36	4	0	0	0
Toronto/City Centre	1,736	138	431	39	3	829	2	0	0	0
Toronto/Lester B. Pearson International	35	336	333	2,558	3,634	7,970	11,192	4,493	549	4,268
Vancouver Harbour	135	3,414	1,347	2	121	0	0	0	0	0
Vancouver International	976	3,915	974	3,037	2,546	4,340	5,623	1,476	621	2,269
Victoria International	3,011	1,058	176	468	1,084	982	491	47	60	2
Whitehorse International	423	92	141	36	8	324	171	0	2	0
Windsor	1,174	256	94	125	359	61	0	6	4	47
Winnipeg/James Armstrong Richardson International	942	473	3,378	327	855	1,295	2,542	395	868	14
Winnipeg/St. Andrews	2,548	469	107	0	14	2	0	0	0	0
Yellowknife	502	526	1,023	258	237	805	652	81	2	0
Total of NAV CANADA towers (42)	71,629	19,500	25,177	19,217	20,436	39,367	44,002	11,436	5,151	10,012

Table 6-2
Itinerant movements by aircraft weight group — NAV CANADA flight service stations

	Gross take-off weight in kilograms									
	2 000 and under	2 001 to 4 000	4 001 to 5 670	5 671 to 9 000	9 001 to 18 000	18 001 to 35 000	35 001 to 70 000	70 001 to 90 000	90 001 to 136 000	136 001 and over
	number									
Brandon Municipal	456	20	213	16	23	6	2	61	0	0
Campbell River	684	84	43	476	206	6	8	0	0	1
Castlegar	263	14	20	104	99	110	0	2	0	0
Charlottetown	287	303	77	115	149	118	54	0	0	0
Churchill	16	16	156	34	292	157	2	6	0	0
Cranbrook	231	65	88	366	88	87	4	0	0	0
Dawson Creek	109	27	123	139	110	0	0	0	0	0
Deer Lake	142	63	143	36	907	113	85	2	0	0
Fort McMurray	1,198	466	458	679	321	508	298	0	0	0
Fort Nelson	291	177	187	198	103	4	0	8	0	0
Fort St John	796	162	274	356	113	218	0	0	0	0
Fredericton International	419	147	212	110	99	464	32	12	0	2
Grande Prairie	591	314	584	528	19	382	125	0	0	0
High Level	193	22	375	234	16	2	0	0	0	0
Îles-de-la-Madeleine	8	166	198	8	135	58	6	2	0	0
Inuvik/Mike Zubko	158	8	499	2	2	31	121	6	0	0
Iqaluit	6	8	421	43	41	316	172	10	77	2
Kamloops	668	212	120	349	22	583	2	2	0	0
Kenora	188	12	535	12	12	4	0	4	0	0
Kingston	855	50	113	475	24	16	0	4	0	0
Kuujuuaq	18	0	533	6	95	78	94	2	26	0
Kuujuuarapik	10	4	166	0	196	106	0	2	0	0
La Grande Rivière	16	56	87	12	131	381	2	0	0	0
La Ronge	154	407	627	105	232	174	0	4	0	0
Lethbridge	841	137	240	480	10	0	21	0	0	0
Lloydminster	502	116	84	158	8	0	0	0	0	0
Medicine Hat	415	104	279	291	8	0	0	0	0	0
Mont-Joli	17	19	137	8	92	46	0	0	0	0
Nanaimo	890	395	114	91	94	263	0	0	0	0
Norman Wells	243	140	365	10	2	24	147	0	0	0
North Bay	1,190	158	326	81	180	78	5	4	0	0
Ottawa/Gatineau	707	64	158	8	8	0	2	2	0	0
Peace River	292	147	512	120	4	0	0	0	0	0
Penticton	989	80	39	160	103	98	3	2	0	0
Port Hardy	85	162	307	90	145	8	6	0	0	0
Prince Albert	233	147	191	411	240	322	0	4	0	0
Prince Rupert	20	51	34	24	67	112	2	0	0	0
Rankin Inlet	33	49	217	144	278	28	138	16	0	0
Red Deer Regional	1,682	312	395	160	4	0	3	2	0	0
Rouyn-Noranda	118	24	260	28	168	201	52	0	0	0
Saint John	231	206	189	212	237	241	26	2	0	0
Sept-Îles	226	335	417	176	558	96	0	2	0	0
Sioux Lookout	39	115	1,833	452	0	0	0	0	0	0
Smithers	113	10	107	243	4	129	0	0	0	0
St Anthony	22	148	213	10	114	0	0	2	0	0
St Catharines	859	101	26	15	0	12	0	6	0	0
Terrace	409	2	62	209	215	164	0	0	0	0
Thompson	264	437	1,153	16	356	120	0	0	0	0
Timmins	184	298	760	99	357	224	0	0	0	0
Val-D'or	237	16	256	40	301	58	2	0	63	0
Victoria Harbour	147	1,839	1,323	0	157	0	0	0	0	0
Wabush	25	32	80	62	405	49	0	0	0	0
Whitecourt	740	95	94	43	4	2	0	2	0	0
Williams Lake	236	86	49	387	2	2	0	0	0	0
Total of all flight service stations (54)	19,746	8,628	16,472	8,631	7,556	6,199	1,414	171	166	5

Table 7-1
Itinerant movements, domestic, transborder and international — NAV CANADA towers

	Total	Air carrier movements		Other commercial movements	Private movements	Government movements	
		Levels I to III and foreign	Levels IV to VI			Civil	Military
number							
Abbotsford							
Domestic	6,424	717	2,790	1,605	759	506	47
Transborder	73	12	17	1	43	0	0
Other international	8	8	0	0	0	0	0
Total	6,505	737	2,807	1,606	802	506	47
Boundary Bay							
Domestic	5,710	6	911	3,840	883	67	3
Transborder	27	1	1	11	14	0	0
Other international	0	0	0	0	0	0	0
Total	5,737	7	912	3,851	897	67	3
Calgary International							
Domestic	16,207	13,292	960	756	946	175	78
Transborder	3,769	3,388	87	25	268	0	1
Other international	603	594	0	0	7	0	2
Total	20,579	17,274	1,047	781	1,221	175	81
Calgary/Springbank							
Domestic	5,979	38	1,012	3,028	1,745	64	92
Transborder	30	0	2	5	23	0	0
Other international	0	0	0	0	0	0	0
Total	6,009	38	1,014	3,033	1,768	64	92
Chicoutimi/St-Honoré							
Domestic	1,463	9	475	885	87	5	2
Transborder	0	0	0	0	0	0	0
Other international	0	0	0	0	0	0	0
Total	1,463	9	475	885	87	5	2
Edmonton City Centre							
Domestic	6,092	1,853	791	1,733	1,287	398	30
Transborder	46	12	16	0	17	1	0
Other international	2	1	0	1	0	0	0
Total	6,140	1,866	807	1,734	1,304	399	30
Edmonton International							
Domestic	9,302	8,323	447	163	271	45	53
Transborder	1,280	1,216	14	2	43	1	4
Other international	186	183	1	0	1	0	1
Total	10,768	9,722	462	165	315	46	58
Edmonton/Villeneuve							
Domestic	1,661	3	360	895	403	0	0
Transborder	0	0	0	0	0	0	0
Other international	0	0	0	0	0	0	0
Total	1,661	3	360	895	403	0	0
Gander International							
Domestic	1,147	212	752	7	15	38	123
Transborder	279	103	0	13	122	2	39
Other international	322	106	5	16	135	2	58
Total	1,748	421	757	36	272	42	220
Halifax/Robert L Stanfield International							
Domestic	4,902	4,030	342	34	212	67	217
Transborder	865	728	47	6	76	0	8
Other international	688	506	136	5	13	3	25
Total	6,455	5,264	525	45	301	70	250
Hamilton							
Domestic	2,824	1,372	922	76	319	122	13
Transborder	576	393	13	7	162	0	1
Other international	79	73	0	1	5	0	0
Total	3,479	1,838	935	84	486	122	14

Table 7-1 – continued

Itinerant movements, domestic, transborder and international — NAV CANADA towers

	Total	Air carrier movements		Other commercial movements	Private movements	Government movements	
		Levels I to III and foreign	Levels IV to VI			Civil	Military
number							
Kelowna							
Domestic	4,378	2,274	354	1,184	440	106	20
Transborder	332	259	13	3	57	0	0
Other international	39	39	0	0	0	0	0
Total	4,749	2,572	367	1,187	497	106	20
Kitchener/Waterloo							
Domestic	2,867	92	1,450	603	640	10	72
Transborder	374	224	48	2	98	2	0
Other international	22	20	0	0	2	0	0
Total	3,263	336	1,498	605	740	12	72
Langley							
Domestic	2,174	117	211	1,044	779	16	7
Transborder	7	0	0	0	7	0	0
Other international	0	0	0	0	0	0	0
Total	2,181	117	211	1,044	786	16	7
London							
Domestic	4,066	898	607	1,405	1,012	89	55
Transborder	412	260	7	2	143	0	0
Other international	12	10	0	0	2	0	0
Total	4,490	1,168	614	1,407	1,157	89	55
Moncton/Greater Moncton International							
Domestic	5,560	5,104	44	21	114	215	62
Transborder	83	76	1	1	4	1	0
Other international	35	34	0	0	0	1	0
Total	5,678	5,214	45	22	118	217	62
Montréal/Mirabel International							
Domestic	1,442	808	297	35	212	24	66
Transborder	233	223	0	2	8	0	0
Other international	7	7	0	0	0	0	0
Total	1,682	1,038	297	37	220	24	66
Montréal/Pierre Elliott Trudeau International							
Domestic	10,086	8,396	542	241	685	202	20
Transborder	6,145	5,521	64	100	452	0	8
Other international	2,101	1,978	30	19	72	0	2
Total	18,332	15,895	636	360	1,209	202	30
Montréal/St-Hubert							
Domestic	4,979	2,152	418	1,183	974	113	139
Transborder	164	16	3	3	132	5	5
Other international	5	1	2	0	0	2	0
Total	5,148	2,169	423	1,186	1,106	120	144
Oshawa							
Domestic	2,244	105	80	1,433	613	3	10
Transborder	50	23	0	5	22	0	0
Other international	0	0	0	0	0	0	0
Total	2,294	128	80	1,438	635	3	10
Ottawa/Macdonald-Cartier International							
Domestic	7,155	4,479	368	1,316	269	559	164
Transborder	2,123	1,978	21	7	88	13	16
Other international	295	280	3	3	1	2	6
Total	9,573	6,737	392	1,326	358	574	186
Pitt Meadows							
Domestic	1,809	16	539	627	622	2	3
Transborder	7	0	2	0	5	0	0
Other international	2	0	2	0	0	0	0
Total	1,818	16	543	627	627	2	3

Table 7-1 – continued

Itinerant movements, domestic, transborder and international — NAV CANADA towers

	Total	Air carrier movements		Other commercial movements	Private movements	Government movements	
		Levels I to III and foreign	Levels IV to VI			Civil	Military
	number						
Prince George							
Domestic	2,174	1,346	321	121	274	112	0
Transborder	22	5	2	0	15	0	0
Other international	3	2	0	0	1	0	0
Total	2,199	1,353	323	121	290	112	0
Québec/Jean Lesage International							
Domestic	6,154	3,192	813	1,095	572	279	203
Transborder	379	323	1	5	42	0	8
Other international	203	198	0	0	2	0	3
Total	6,736	3,713	814	1,100	616	279	214
Regina International							
Domestic	3,502	1,966	758	44	286	201	247
Transborder	152	121	1	4	23	0	3
Other international	29	28	0	1	0	0	0
Total	3,683	2,115	759	49	309	201	250
Saskatoon/John G Diefenbaker International							
Domestic	5,555	2,914	1,163	511	345	366	256
Transborder	89	59	3	1	24	2	0
Other international	27	27	0	0	0	0	0
Total	5,671	3,000	1,166	512	369	368	256
Sault Ste. Marie							
Domestic	2,210	832	193	1,031	121	29	4
Transborder	13	0	1	1	11	0	0
Other international	0	0	0	0	0	0	0
Total	2,223	832	194	1,032	132	29	4
St. John's International							
Domestic	2,753	1,107	1,364	43	34	139	66
Transborder	155	47	1	6	29	1	71
Other international	215	94	3	21	30	1	66
Total	3,123	1,248	1,368	70	93	141	203
St-Jean							
Domestic	980	170	163	201	278	22	146
Transborder	1	0	1	0	0	0	0
Other international	0	0	0	0	0	0	0
Total	981	170	164	201	278	22	146
Sudbury							
Domestic	2,434	1,402	641	97	224	50	20
Transborder	12	2	0	1	9	0	0
Other international	4	4	0	0	0	0	0
Total	2,450	1,408	641	98	233	50	20
Thunder Bay							
Domestic	4,507	2,572	1,076	479	261	96	23
Transborder	152	123	11	0	18	0	0
Other international	14	14	0	0	0	0	0
Total	4,673	2,709	1,087	479	279	96	23
Toronto/Buttontown Municipal							
Domestic	5,781	329	709	3,158	1,529	54	2
Transborder	295	84	40	15	152	4	0
Other international	1	0	0	0	1	0	0
Total	6,077	413	749	3,173	1,682	58	2
Toronto/City Centre							
Domestic	3,084	978	677	1,134	257	18	20
Transborder	94	2	16	3	73	0	0
Other international	0	0	0	0	0	0	0
Total	3,178	980	693	1,137	330	18	20

Table 7-1 – continued

Itinerant movements, domestic, transborder and international — NAV CANADA towers

	Total	Air carrier movements		Other commercial movements	Private movements	Government movements	
		Levels I to III and foreign	Levels IV to VI			Civil	Military
number							
Toronto/Lester B Pearson International							
Domestic	14,942	14,061	300	72	453	40	16
Transborder	15,897	14,829	114	110	837	4	3
Other international	4,529	4,462	15	23	28	0	1
Total	35,368	33,352	429	205	1,318	44	20
Vancouver Harbour							
Domestic	4,975	4,619	290	13	53	0	0
Transborder	44	32	4	0	8	0	0
Other international	0	0	0	0	0	0	0
Total	5,019	4,651	294	13	61	0	0
Vancouver International							
Domestic	18,821	16,271	1,442	264	605	229	10
Transborder	5,404	5,058	26	16	302	1	1
Other international	1,552	1,481	49	4	16	2	0
Total	25,777	22,810	1,517	284	923	232	11
Victoria International							
Domestic	6,558	2,740	2,129	694	836	48	111
Transborder	724	465	45	5	207	0	2
Other international	97	36	17	15	24	0	5
Total	7,379	3,241	2,191	714	1,067	48	118
Whitehorse International							
Domestic	1,163	636	314	21	140	41	11
Transborder	31	6	4	0	20	1	0
Other international	3	2	0	0	1	0	0
Total	1,197	644	318	21	161	42	11
Windsor							
Domestic	1,956	646	976	44	251	28	11
Transborder	149	59	22	5	62	0	1
Other international	21	10	10	0	1	0	0
Total	2,126	715	1,008	49	314	28	12
Winnipeg/James Armstrong Richardson International							
Domestic	9,732	7,714	752	46	241	358	621
Transborder	1,191	1,091	22	1	65	3	9
Other international	166	163	0	0	1	0	2
Total	11,089	8,968	774	47	307	361	632
Winnipeg/St. Andrews							
Domestic	3,139	413	1,742	615	282	61	26
Transborder	1	0	0	0	1	0	0
Other international	0	0	0	0	0	0	0
Total	3,140	413	1,742	615	283	61	26
Yellowknife							
Domestic	4,081	3,239	616	3	62	98	63
Transborder	3	0	0	0	3	0	0
Other international	2	0	0	0	2	0	0
Total	4,086	3,239	616	3	67	98	63
Total of NAV CANADA towers (42)							
Domestic	212,972	121,443	31,111	31,800	20,391	5,095	3,132
Transborder	41,683	36,739	670	368	3,685	41	180
Other international	11,272	10,361	273	109	345	13	171
Total	265,927	168,543	32,054	32,277	24,421	5,149	3,483

Table 7-2
Itinerant movements, domestic, transborder and international — NAV CANADA flight service stations

	Total	Air carrier movements		Other commercial movements	Private movements	Government movements	
		Levels I to III and foreign	Levels IV to VI			Civil	Military
number							
Brandon Municipal							
Domestic	794	170	225	44	131	14	210
Transborder	3	1	0	0	2	0	0
Other international	0	0	0	0	0	0	0
Total	797	171	225	44	133	14	210
Campbell River							
Domestic	1,471	642	398	125	261	28	17
Transborder	37	8	0	0	29	0	0
Other international	0	0	0	0	0	0	0
Total	1,508	650	398	125	290	28	17
Castlegar							
Domestic	593	301	87	151	42	6	6
Transborder	19	3	0	2	14	0	0
Other international	0	0	0	0	0	0	0
Total	612	304	87	153	56	6	6
Charlottetown							
Domestic	1,093	648	53	134	116	105	37
Transborder	6	1	0	0	4	1	0
Other international	4	3	0	0	0	0	1
Total	1,103	652	53	134	120	106	38
Churchill							
Domestic	675	635	12	0	16	8	4
Transborder	2	0	0	0	2	0	0
Other international	2	2	0	0	0	0	0
Total	679	637	12	0	18	8	4
Cranbrook							
Domestic	905	615	44	106	120	10	10
Transborder	24	12	3	0	9	0	0
Other international	0	0	0	0	0	0	0
Total	929	627	47	106	129	10	10
Dawson Creek							
Domestic	507	300	118	17	50	22	0
Transborder	1	0	0	0	1	0	0
Other international	0	0	0	0	0	0	0
Total	508	300	118	17	51	22	0
Deer Lake							
Domestic	1,478	742	621	56	9	26	24
Transborder	5	0	1	0	4	0	0
Other international	8	8	0	0	0	0	0
Total	1,491	750	622	56	13	26	24
Fort McMurray							
Domestic	3,926	2,406	613	420	437	44	6
Transborder	2	2	0	0	0	0	0
Other international	0	0	0	0	0	0	0
Total	3,928	2,408	613	420	437	44	6
Fort Nelson							
Domestic	968	444	268	122	108	18	8
Transborder	0	0	0	0	0	0	0
Other international	0	0	0	0	0	0	0
Total	968	444	268	122	108	18	8
Fort St John							
Domestic	1,919	924	663	160	163	9	0
Transborder	0	0	0	0	0	0	0
Other international	0	0	0	0	0	0	0
Total	1,919	924	663	160	163	9	0

Table 7-2 – continued

Itinerant movements, domestic, transborder and international — NAV CANADA flight service stations

	Total	Air carrier movements		Other commercial movements	Private movements	Government movements	
		Levels I to III and foreign	Levels IV to VI			Civil	Military
number							
Fredericton International							
Domestic	1,406	874	204	12	113	60	143
Transborder	76	58	4	0	10	2	2
Other international	15	12	0	0	0	1	2
Total	1,497	944	208	12	123	63	147
Grande Prairie							
Domestic	2,540	1,622	425	5	470	18	0
Transborder	3	1	0	0	2	0	0
Other international	0	0	0	0	0	0	0
Total	2,543	1,623	425	5	472	18	0
High Level							
Domestic	842	646	149	0	27	20	0
Transborder	0	0	0	0	0	0	0
Other international	0	0	0	0	0	0	0
Total	842	646	149	0	27	20	0
Îles-de-la-Madeleine							
Domestic	580	327	166	18	7	54	8
Transborder	1	0	0	0	1	0	0
Other international	0	0	0	0	0	0	0
Total	581	327	166	18	8	54	8
Inuvik/Mike Zubko							
Domestic	824	261	524	0	3	25	11
Transborder	3	0	0	0	3	0	0
Other international	0	0	0	0	0	0	0
Total	827	261	524	0	6	25	11
Iqaluit							
Domestic	1,017	911	25	23	19	35	4
Transborder	30	18	5	0	7	0	0
Other international	49	25	0	5	17	0	2
Total	1,096	954	30	28	43	35	6
Kamloops							
Domestic	1,864	898	293	324	253	76	20
Transborder	93	68	1	1	23	0	0
Other international	1	0	0	0	0	0	1
Total	1,958	966	294	325	276	76	21
Kenora							
Domestic	765	403	190	75	33	18	46
Transborder	2	1	0	0	1	0	0
Other international	0	0	0	0	0	0	0
Total	767	404	190	75	34	18	46
Kingston							
Domestic	1,522	482	367	321	273	42	37
Transborder	15	9	3	0	2	0	1
Other international	0	0	0	0	0	0	0
Total	1,537	491	370	321	275	42	38
Kuujuuaq							
Domestic	849	796	18	0	4	31	0
Transborder	1	1	0	0	0	0	0
Other international	2	2	0	0	0	0	0
Total	852	799	18	0	4	31	0
Kuujuuarapik							
Domestic	484	470	8	0	2	2	2
Transborder	0	0	0	0	0	0	0
Other international	0	0	0	0	0	0	0
Total	484	470	8	0	2	2	2
La Grande Rivière							
Domestic	685	515	142	2	8	18	0
Transborder	0	0	0	0	0	0	0
Other international	0	0	0	0	0	0	0
Total	685	515	142	2	8	18	0

Table 7-2 – continued

Itinerant movements, domestic, transborder and international — NAV CANADA flight service stations

	Total	Air carrier movements		Other commercial movements	Private movements	Government movements	
		Levels I to III and foreign	Levels IV to VI			Civil	Military
number							
La Ronge							
Domestic	1,703	1,526	21	19	32	88	17
Transborder	0	0	0	0	0	0	0
Other international	0	0	0	0	0	0	0
Total	1,703	1,526	21	19	32	88	17
Lethbridge							
Domestic	1,656	645	35	540	401	13	22
Transborder	64	11	0	2	51	0	0
Other international	9	9	0	0	0	0	0
Total	1,729	665	35	542	452	13	22
Lloydminster							
Domestic	867	220	340	22	249	30	6
Transborder	1	0	0	0	1	0	0
Other international	0	0	0	0	0	0	0
Total	868	220	340	22	250	30	6
Medicine Hat							
Domestic	1,090	734	87	44	204	8	13
Transborder	7	6	0	0	1	0	0
Other international	0	0	0	0	0	0	0
Total	1,097	740	87	44	205	8	13
Mont-Joli							
Domestic	318	258	4	8	15	27	6
Transborder	1	0	0	0	1	0	0
Other international	0	0	0	0	0	0	0
Total	319	258	4	8	16	27	6
Nanaimo							
Domestic	1,802	472	453	232	548	75	22
Transborder	45	5	4	0	36	0	0
Other international	0	0	0	0	0	0	0
Total	1,847	477	457	232	584	75	22
Norman Wells							
Domestic	931	749	164	0	10	6	2
Transborder	0	0	0	0	0	0	0
Other international	0	0	0	0	0	0	0
Total	931	749	164	0	10	6	2
North Bay							
Domestic	2,003	558	470	634	264	61	16
Transborder	19	4	2	2	11	0	0
Other international	0	0	0	0	0	0	0
Total	2,022	562	472	636	275	61	16
Ottawa/Gatineau							
Domestic	945	183	234	125	327	50	26
Transborder	4	0	1	0	3	0	0
Other international	0	0	0	0	0	0	0
Total	949	183	235	125	330	50	26
Peace River							
Domestic	1,075	709	221	48	85	12	0
Transborder	0	0	0	0	0	0	0
Other international	0	0	0	0	0	0	0
Total	1,075	709	221	48	85	12	0
Penticton							
Domestic	1,451	352	627	111	234	27	100
Transborder	22	3	0	0	19	0	0
Other international	1	1	0	0	0	0	0
Total	1,474	356	627	111	253	27	100

Table 7-2 – continued

Itinerant movements, domestic, transborder and international — NAV CANADA flight service stations

	Total	Air carrier movements		Other commercial movements	Private movements	Government movements	
		Levels I to III and foreign	Levels IV to VI			Civil	Military
number							
Port Hardy							
Domestic	791	567	80	6	65	51	22
Transborder	12	5	0	0	5	0	2
Other international	0	0	0	0	0	0	0
Total	803	572	80	6	70	51	24
Prince Albert							
Domestic	1,547	1,143	150	49	74	101	30
Transborder	1	0	0	0	1	0	0
Other international	0	0	0	0	0	0	0
Total	1,548	1,143	150	49	75	101	30
Prince Rupert							
Domestic	299	188	57	3	4	46	1
Transborder	10	1	0	1	7	0	1
Other international	1	0	0	0	1	0	0
Total	310	189	57	4	12	46	2
Rankin Inlet							
Domestic	903	860	33	0	0	10	0
Transborder	0	0	0	0	0	0	0
Other international	0	0	0	0	0	0	0
Total	903	860	33	0	0	10	0
Red Deer Regional							
Domestic	2,542	383	1,162	280	675	32	10
Transborder	16	4	4	0	8	0	0
Other international	0	0	0	0	0	0	0
Total	2,558	387	1,166	280	683	32	10
Rouyn-Noranda							
Domestic	851	515	128	22	152	34	0
Transborder	0	0	0	0	0	0	0
Other international	0	0	0	0	0	0	0
Total	851	515	128	22	152	34	0
Saint John							
Domestic	1,255	788	87	98	211	9	62
Transborder	84	1	0	12	69	1	1
Other international	5	2	0	0	2	0	1
Total	1,344	791	87	110	282	10	64
Sept-Îles							
Domestic	1,795	1,252	397	36	27	79	4
Transborder	13	0	0	2	11	0	0
Other international	2	0	0	0	2	0	0
Total	1,810	1,252	397	38	40	79	4
Sioux Lookout							
Domestic	2,437	1,620	767	34	14	0	2
Transborder	2	0	1	0	1	0	0
Other international	0	0	0	0	0	0	0
Total	2,439	1,620	768	34	15	0	2
Smithers							
Domestic	605	415	86	0	78	24	2
Transborder	1	0	0	0	1	0	0
Other international	0	0	0	0	0	0	0
Total	606	415	86	0	79	24	2
St Anthony							
Domestic	508	122	261	58	3	60	4
Transborder	0	0	0	0	0	0	0
Other international	1	0	0	0	1	0	0
Total	509	122	261	58	4	60	4

Table 7-2 – continued

Itinerant movements, domestic, transborder and international — NAV CANADA flight service stations

	Total	Air carrier movements		Other commercial movements	Private movements	Government movements	
		Levels I to III and foreign	Levels IV to VI			Civil	Military
number							
St Catharines							
Domestic	967	12	479	85	266	16	109
Transborder	52	5	6	2	39	0	0
Other international	0	0	0	0	0	0	0
Total	1,019	17	485	87	305	16	109
Terrace							
Domestic	1,060	612	418	0	9	21	0
Transborder	1	0	0	0	1	0	0
Other international	0	0	0	0	0	0	0
Total	1,061	612	418	0	10	21	0
Thompson							
Domestic	2,346	1,776	429	12	19	110	0
Transborder	0	0	0	0	0	0	0
Other international	0	0	0	0	0	0	0
Total	2,346	1,776	429	12	19	110	0
Timmins							
Domestic	1,916	1,566	154	16	151	29	0
Transborder	6	0	0	0	6	0	0
Other international	0	0	0	0	0	0	0
Total	1,922	1,566	154	16	157	29	0
Val-D'or							
Domestic	972	699	80	27	142	24	0
Transborder	1	1	0	0	0	0	0
Other international	0	0	0	0	0	0	0
Total	973	700	80	27	142	24	0
Victoria Harbour							
Domestic	3,247	3,081	44	2	1	115	4
Transborder	219	1	0	0	218	0	0
Other international	0	0	0	0	0	0	0
Total	3,466	3,082	44	2	219	115	4
Wabush							
Domestic	653	346	261	12	16	16	2
Transborder	0	0	0	0	0	0	0
Other international	0	0	0	0	0	0	0
Total	653	346	261	12	16	16	2
Whitecourt							
Domestic	980	85	647	189	45	10	4
Transborder	0	0	0	0	0	0	0
Other international	0	0	0	0	0	0	0
Total	980	85	647	189	45	10	4
Williams Lake							
Domestic	762	388	165	72	121	14	2
Transborder	0	0	0	0	0	0	0
Other international	0	0	0	0	0	0	0
Total	762	388	165	72	121	14	2
Total of all flight service stations (54)							
Domestic	67,984	38,856	14,154	4,899	7,107	1,887	1,081
Transborder	904	230	35	24	604	4	7
Other international	100	64	0	5	23	1	7
Total	68,988	39,150	14,189	4,928	7,734	1,892	1,095

Table 8-1
Total aircraft movements, peak hour and peak day — NAV CANADA towers

	Rank of movements	Number of movements	Peak hour occurrence			Peak day occurrence	
			Day in month	Hour in day	Number of movements	Day in month	Number of movements
Abbotsford	6	16,595	15	15	135	6	917
Boundary Bay	7	15,991	6	15	117	28	978
Calgary International	3	20,780	15	15	70	15	803
Calgary/Springbank	5	17,018	26	13	110	24	1,024
Chicoutimi/St-Honoré	34	4,468	28	9	104	29	616
Edmonton City Centre	19	7,602	9	17	46	13	410
Edmonton International	14	11,248	13	9	46	13	482
Edmonton/Villeneuve	22	7,271	7	16	79	23	443
Gander International	39	2,354	22	13	32	20	150
Halifax/Robert L Stanfield International	23	7,095	26	14	42	26	302
Hamilton	28	5,578	29	15	52	6	365
Kelowna	17	8,211	26	13	60	29	453
Kitchener/Waterloo	24	6,857	13	11	81	23	618
Langley	29	5,354	31	12	98	27	423
London	20	7,548	28	15	93	11	558
Moncton/Greater Moncton International	13	11,442	21	11	79	21	805
Montréal/Mirabel International	40	2,100	28	14	25	29	137
Montréal/Pierre Elliott Trudeau International	4	18,332	15	18	70	29	693
Montréal/St-Hubert	12	11,871	13	14	125	21	897
Oshawa	26	5,886	13	15	83	23	468
Ottawa/Macdonald-Cartier International	11	11,943	24	13	68	28	543
Pitt Meadows	31	5,150	31	14	103	31	614
Prince George	36	3,355	20	16	80	20	311
Québec/Jean Lesage International	16	8,836	23	10	71	31	526
Regina International	30	5,213	15	10	51	15	288
Saskatoon/John G Diefenbaker International	15	9,371	29	16	76	29	440
Sault Ste. Marie	32	5,059	28	21	115	14	442
St. John's International	37	3,267	21	16	17	30	146
St-Jean	42	1,615	25	13	77	31	211
Sudbury	38	3,217	29	10	43	8	229
Thunder Bay	21	7,497	7	15	85	7	628
Toronto/Buttonville Municipal	9	12,741	30	16	116	23	938
Toronto/City Centre	25	6,437	30	18	83	23	580
Toronto/Lester B Pearson International	1	35,368	8	17	99	9	1,303
Vancouver Harbour	33	5,025	6	8	33	29	236
Vancouver International	2	25,777	15	17	76	30	950
Victoria International	8	13,284	26	14	96	14	820
Whitehorse International	41	1,737	31	15	31	18	127
Windsor	35	4,102	13	16	49	11	234
Winnipeg/James Armstrong Richardson International	10	11,982	16	9	51	14	569
Winnipeg/St. Andrews	18	7,756	9	15	87	27	607
Yellowknife	27	5,790	25	15	62	30	307

Table 8-2
Total aircraft movements, peak hour and peak day — NAV CANADA flight service stations

	Rank of movements	Number of movements	Peak hour occurrence			Peak day occurrence	
			Day in month	Hour in day	Number of movements	Day in month	Number of movements
Brandon Municipal	28	1,547	23	15	45	9	160
Campbell River	8	3,082	28	16	76	28	367
Castlegar	31	1,336	22	12	87	22	202
Charlottetown	29	1,485	12	19	29	25	126
Churchill	46	705	28	15	28	28	61
Cranbrook	34	1,227	6	11	27	29	75
Dawson Creek	49	600	15	15	30	15	119
Deer Lake	23	1,783	7	9	26	28	119
Fort McMurray	3	4,430	10	16	41	23	257
Fort Nelson	36	1,008	22	11	13	15	63
Fort St John	6	3,097	20	13	70	20	230
Fredericton International	24	1,683	5	16	20	19	102
Grande Prairie	9	2,937	9	17	33	7	159
High Level	22	1,888	10	8	45	10	235
Îles-de-la-Madeleine	50	581	13	15	7	13	34
Inuvik/Mike Zubko	43	859	16	10	14	14	54
Iqaluit	35	1,196	24	13	17	21	73
Kamloops	7	3,092	4	11	62	15	200
Kenora	44	849	13	15	28	15	71
Kingston	14	2,588	4	10	42	31	234
Kuujuuaq	39	930	25	15	16	25	67
Kuujuuarapik	52	484	14	13	6	26	31
La Grande Rivière	45	715	6	16	10	6	41
La Ronge	21	1,997	22	14	28	22	146
Lethbridge	11	2,831	26	21	34	13	165
Lloydminster	33	1,274	2	10	30	21	82
Medicine Hat	30	1,462	10	9	27	7	83
Mont-Joli	54	319	13	18	6	13	25
Nanaimo	12	2,797	12	11	88	12	221
Norman Wells	38	947	12	13	12	16	50
North Bay	1	4,948	27	16	76	28	527
Ottawa/Gatineau	17	2,317	25	15	51	31	287
Peace River	27	1,549	24	18	38	29	126
Penticton	10	2,836	26	15	49	21	242
Port Hardy	41	887	4	14	14	14	58
Prince Albert	25	1,658	29	15	23	29	115
Prince Rupert	53	374	3	19	16	22	40
Rankin Inlet	40	921	7	16	17	7	58
Red Deer Regional	2	4,684	23	11	56	22	301
Rouyn-Noranda	37	1,007	11	14	24	31	75
Saint John	26	1,656	10	9	24	23	110
Sept-Îles	20	2,002	27	11	35	23	114
Sioux Lookout	13	2,603	16	16	29	27	125
Smithers	48	614	18	11	8	12	35
St Anthony	51	511	25	10	8	25	32
St Catharines	16	2,391	30	16	46	30	211
Terrace	32	1,299	9	15	33	30	93
Thompson	15	2,438	2	10	25	2	138
Timmins	18	2,054	8	17	55	8	122
Val-D'or	19	2,027	28	16	105	28	293
Victoria Harbour	5	3,472	20	17	25	27	171
Wabush	47	653	1	13	7	6	32
Whitecourt	4	3,860	28	15	54	28	324
Williams Lake	42	864	31	19	29	31	59

Table 9-1
Itinerant aircraft movements, peak hour and peak day — NAV CANADA towers

	Rank of movements	Number of movements	Peak hour occurrence			Peak day occurrence	
			Day in month	Hour in day	Number of movements	Day in month	Number of movements
Abbotsford	10	6,505	6	14	57	28	389
Boundary Bay	15	5,737	25	13	55	14	433
Calgary International	3	20,579	15	15	70	15	803
Calgary/Springbank	14	6,009	4	11	40	24	344
Chicoutimi/St-Honoré	40	1,463	21	14	23	29	184
Edmonton City Centre	12	6,140	7	17	33	7	283
Edmonton International	6	10,768	14	8	42	8	449
Edmonton/Villeneuve	39	1,661	7	16	17	23	109
Gander International	37	1,748	20	14	11	20	100
Halifax/Robert L Stanfield International	11	6,455	6	13	23	26	266
Hamilton	25	3,479	23	14	28	23	219
Kelowna	20	4,749	1	14	22	28	207
Kitchener/Waterloo	26	3,263	23	14	33	23	238
Langley	34	2,181	25	12	24	29	144
London	22	4,490	11	14	36	11	300
Moncton/Greater Moncton International	16	5,678	23	16	28	23	344
Montréal/Mirabel International	38	1,682	29	19	16	15	103
Montréal/Pierre Elliott Trudeau International	4	18,332	15	18	70	29	693
Montréal/St-Hubert	18	5,148	31	13	43	21	355
Oshawa	31	2,294	29	16	30	23	200
Ottawa/Macdonald-Cartier International	7	9,573	29	14	38	29	420
Pitt Meadows	36	1,818	31	14	33	14	203
Prince George	33	2,199	20	16	18	20	115
Québec/Jean Lesage International	9	6,736	31	10	41	29	341
Regina International	24	3,683	8	16	19	29	185
Saskatoon/John G Diefenbaker International	17	5,671	30	9	29	7	249
Sault Ste. Marie	32	2,223	28	17	19	20	122
St. John's International	29	3,123	14	16	15	30	138
St-Jean	42	981	31	12	36	31	181
Sudbury	30	2,450	20	17	18	20	125
Thunder Bay	21	4,673	7	15	29	7	254
Toronto/Buttonville Municipal	13	6,077	23	10	53	23	500
Toronto/City Centre	27	3,178	29	18	26	29	215
Toronto/Lester B Pearson International	1	35,368	8	17	99	9	1,303
Vancouver Harbour	19	5,019	6	8	33	29	236
Vancouver International	2	25,777	15	17	76	30	950
Victoria International	8	7,379	14	15	38	14	374
Whitehorse International	41	1,197	20	10	11	10	74
Windsor	35	2,126	11	17	18	30	123
Winnipeg/James Armstrong Richardson International	5	11,089	16	9	47	14	473
Winnipeg/St. Andrews	28	3,140	16	16	25	27	211
Yellowknife	23	4,086	21	11	22	30	187

Table 9-2
Itinerant aircraft movements, peak hour and peak day — NAV CANADA flight service stations

	Rank of movements	Number of movements	Peak hour occurrence			Peak day occurrence	
			Day in month	Hour in day	Number of movements	Day in month	Number of movements
Brandon Municipal	41	797	13	14	15	9	58
Campbell River	17	1,508	7	11	15	7	84
Castlegar	47	612	26	11	9	30	40
Charlottetown	22	1,103	10	9	10	26	72
Churchill	45	679	7	11	7	2	37
Cranbrook	33	929	1	11	9	29	49
Dawson Creek	51	508	1	11	6	15	33
Deer Lake	19	1,491	16	18	13	16	79
Fort McMurray	1	3,928	15	15	21	28	190
Fort Nelson	30	968	22	11	13	15	63
Fort St John	10	1,919	24	12	17	27	103
Fredericton International	18	1,497	5	13	16	5	77
Grande Prairie	4	2,543	14	10	18	7	131
High Level	38	842	1	10	10	1	59
Îles-de-la-Madeleine	49	581	13	15	7	13	34
Inuvik/Mike Zubko	39	827	2	16	8	28	52
Iqaluit	24	1,096	9	14	8	9	63
Kamloops	8	1,958	27	18	15	15	100
Kenora	42	767	13	16	7	15	49
Kingston	16	1,537	11	13	25	11	135
Kuujuuaq	36	852	22	11	7	23	51
Kuujuuarapik	52	484	14	13	6	26	31
La Grande Rivière	44	685	6	13	7	20	34
La Ronge	14	1,703	28	17	13	29	108
Lethbridge	13	1,729	31	15	16	6	107
Lloydminster	35	868	15	17	10	9	53
Medicine Hat	23	1,097	21	17	15	7	73
Mont-Joli	53	319	13	18	6	13	25
Nanaimo	11	1,847	15	15	24	14	125
Norman Wells	32	931	16	14	11	12	45
North Bay	7	2,022	15	17	20	28	153
Ottawa/Gatineau	31	949	11	16	18	31	99
Peace River	25	1,075	23	8	11	23	66
Penticton	20	1,474	13	16	14	15	98
Port Hardy	40	803	22	11	10	14	58
Prince Albert	15	1,548	23	9	14	30	81
Prince Rupert	54	310	22	11	6	22	20
Rankin Inlet	34	903	6	14	8	21	47
Red Deer Regional	3	2,558	3	12	23	8	156
Rouyn-Noranda	37	851	16	14	8	28	48
Saint John	21	1,344	1	11	16	1	81
Sept-Îles	12	1,810	23	11	14	21	104
Sioux Lookout	5	2,439	13	16	18	27	125
Smithers	48	606	5	9	7	12	35
St Anthony	50	509	25	10	8	25	32
St Catharines	27	1,019	11	11	16	31	93
Terrace	26	1,061	30	15	13	30	77
Thompson	6	2,346	6	14	13	23	110
Timmins	9	1,922	7	16	13	30	105
Val-D'or	29	973	4	13	9	23	59
Victoria Harbour	2	3,466	20	17	25	27	171
Wabush	46	653	1	13	7	6	32
Whitecourt	28	980	13	8	11	15	65
Williams Lake	43	762	10	9	10	12	39

Table 10-1
Local movements, peak hour and peak day — NAV CANADA towers

	Rank of movements	Number of movements	Peak hour occurrence			Peak day occurrence	
			Day in month	Hour in day	Number of movements	Day in month	Number of movements
Abbotsford	3	10,090	20	14	106	6	542
Boundary Bay	2	10,254	20	8	90	28	628
Calgary International	37	201	23	17	15	23	38
Calgary/Springbank	1	11,009	23	17	86	24	680
Chicoutimi/St-Honoré	18	3,005	28	9	90	29	432
Edmonton City Centre	27	1,462	13	18	30	13	136
Edmonton International	35	480	20	13	14	11	52
Edmonton/Villeneuve	8	5,610	23	10	68	24	344
Gander International	33	606	23	14	26	6	56
Halifax/Robert L Stanfield International	31	640	26	14	22	19	62
Hamilton	23	2,099	29	15	46	6	170
Kelowna	13	3,462	26	13	46	29	262
Kitchener/Waterloo	11	3,594	20	18	66	23	380
Langley	16	3,173	31	12	84	27	290
London	17	3,058	28	15	62	23	276
Moncton/Greater Moncton International	7	5,764	27	16	60	21	464
Montréal/Mirabel International	36	418	25	10	20	19	53
Montréal/Pierre Elliott Trudeau International	0	0	0	0	0	0	0
Montréal/St-Hubert	4	6,723	13	14	102	21	542
Oshawa	12	3,592	13	15	68	30	306
Ottawa/Macdonald-Cartier International	21	2,370	1	14	36	25	214
Pitt Meadows	14	3,332	30	13	70	31	414
Prince George	28	1,156	20	15	62	20	196
Québec/Jean Lesage International	22	2,100	23	10	48	31	188
Regina International	26	1,530	15	10	42	15	134
Saskatoon/John G Diefenbaker International	10	3,700	29	15	52	12	226
Sault Ste. Marie	19	2,836	28	21	104	14	348
St. John's International	38	144	22	12	10	22	20
St-Jean	32	634	25	13	66	25	86
Sudbury	30	767	29	10	36	8	105
Thunder Bay	20	2,824	7	15	56	7	374
Toronto/Buttonville Municipal	5	6,664	30	16	82	29	536
Toronto/City Centre	15	3,259	30	18	62	23	376
Toronto/Lester B Pearson International	0	0	0	0	0	0	0
Vancouver Harbour	39	6	4	8	6	4	6
Vancouver International	0	0	0	0	0	0	0
Victoria International	6	5,905	6	15	62	14	446
Whitehorse International	34	540	31	15	26	18	90
Windsor	24	1,976	13	16	40	9	136
Winnipeg/James Armstrong Richardson International	29	893	11	13	24	14	96
Winnipeg/St. Andrews	9	4,616	9	15	66	27	396
Yellowknife	25	1,704	25	15	44	26	136

Table 10-2
Local movements, peak hour and peak day — NAV CANADA flight service stations

	Rank of movements	Number of movements	Peak hour occurrence			Peak day occurrence	
			Day in month	Hour in day	Number of movements	Day in month	Number of movements
Brandon Municipal	15	750	23	15	32	9	102
Campbell River	4	1,574	28	16	62	28	288
Castlegar	16	724	22	12	80	22	172
Charlottetown	21	382	23	18	26	25	72
Churchill	45	26	28	15	26	28	26
Cranbrook	24	298	6	11	24	9	30
Dawson Creek	37	92	15	15	26	15	86
Deer Lake	26	292	7	9	24	28	60
Fort McMurray	17	502	10	16	34	23	104
Fort Nelson	42	40	7	17	8	7	16
Fort St John	8	1,178	20	13	64	20	150
Fredericton International	29	186	16	10	16	19	28
Grande Prairie	20	394	9	17	20	9	54
High Level	13	1,046	10	8	44	10	228
Îles-de-la-Madeleine	0	0	0	0	0	0	0
Inuvik/Mike Zubko	43	32	16	10	12	16	12
Iqaluit	35	100	24	13	14	21	22
Kamloops	9	1,134	4	11	60	18	106
Kenora	39	82	13	15	24	13	24
Kingston	12	1,051	4	10	35	31	118
Kuujuuaq	40	78	25	15	14	25	42
Kuujuuarapik	0	0	0	0	0	0	0
La Grande Rivière	44	30	6	16	8	3	8
La Ronge	25	294	22	14	24	22	66
Lethbridge	10	1,102	4	16	30	13	88
Lloydminster	19	406	2	10	26	18	42
Medicine Hat	22	365	10	9	24	9	38
Mont-Joli	0	0	0	0	0	0	0
Nanaimo	14	950	12	11	80	12	120
Norman Wells	47	16	7	13	4	16	6
North Bay	1	2,926	27	16	70	28	374
Ottawa/Gatineau	6	1,368	21	14	48	25	192
Peace River	18	474	31	15	34	31	76
Penticton	7	1,362	26	15	42	21	172
Port Hardy	38	84	4	14	10	4	24
Prince Albert	33	110	29	15	14	29	36
Prince Rupert	41	64	3	19	12	22	20
Rankin Inlet	46	18	7	16	12	7	12
Red Deer Regional	3	2,126	23	11	38	22	158
Rouyn-Noranda	31	156	11	14	20	11	44
Saint John	23	312	24	11	22	24	60
Sept-Îles	28	192	27	11	24	30	28
Sioux Lookout	30	164	11	16	20	11	48
Smithers	48	8	18	11	8	18	8
St Anthony	50	2	13	16	2	13	2
St Catharines	5	1,372	30	16	38	30	138
Terrace	27	238	9	15	28	9	32
Thompson	36	92	2	10	18	2	34
Timmins	32	132	8	17	48	8	48
Val-D'or	11	1,054	23	11	98	28	246
Victoria Harbour	49	6	22	9	4	22	4
Wabush	0	0	0	0	0	0	0
Whitcourt	2	2,880	28	15	44	28	260
Williams Lake	34	102	31	19	28	18	30

Table 11-1
Local movements - civil, peak hour and peak day — NAV CANADA towers

	Rank of movements	Number of movements	Peak hour occurrence			Peak day occurrence	
			Day in month	Hour in day	Number of movements	Day in month	Number of movements
Abbotsford	3	10,090	20	14	106	6	542
Boundary Bay	2	10,254	20	8	90	28	628
Calgary International	37	168	29	14	15	6	32
Calgary/Springbank	1	11,003	23	17	86	24	680
Chicoutimi/St-Honoré	18	3,005	28	9	90	29	432
Edmonton City Centre	26	1,458	13	18	30	13	136
Edmonton International	34	462	20	13	14	11	52
Edmonton/Villeneuve	7	5,610	23	10	68	24	344
Gander International	33	468	22	13	24	6	56
Halifax/Robert L Stanfield International	36	396	19	13	18	12	52
Hamilton	23	2,097	29	15	46	6	170
Kelowna	13	3,460	26	13	46	29	262
Kitchener/Waterloo	12	3,574	20	18	66	23	372
Langley	16	3,173	31	12	84	27	290
London	17	3,028	28	15	62	23	276
Moncton/Greater Moncton International	6	5,732	27	16	60	21	464
Montréal/Mirabel International	35	400	25	10	20	19	53
Montréal/Pierre Elliott Trudeau International	0	0	0	0	0	0	0
Montréal/St-Hubert	4	6,715	13	14	102	21	542
Oshawa	11	3,592	13	15	68	30	306
Ottawa/Macdonald-Cartier International	21	2,346	1	14	36	25	214
Pitt Meadows	14	3,332	30	13	70	31	414
Prince George	28	1,156	20	15	62	20	196
Québec/Jean Lesage International	22	2,098	23	10	48	31	188
Regina International	27	1,428	15	10	42	15	130
Saskatoon/John G Diefenbaker International	10	3,652	29	15	52	12	226
Sault Ste. Marie	19	2,836	28	21	104	14	348
St. John's International	38	144	22	12	10	22	20
St-Jean	31	634	25	13	66	25	86
Sudbury	29	767	29	10	36	8	105
Thunder Bay	20	2,814	7	15	56	7	374
Toronto/Buttonville Municipal	5	6,664	30	16	82	29	536
Toronto/City Centre	15	3,259	30	18	62	23	376
Toronto/Lester B Pearson International	0	0	0	0	0	0	0
Vancouver Harbour	39	6	4	8	6	4	6
Vancouver International	0	0	0	0	0	0	0
Victoria International	8	5,428	6	15	62	14	390
Whitehorse International	32	536	31	15	26	18	90
Windsor	24	1,976	13	16	40	9	136
Winnipeg/James Armstrong Richardson International	30	737	11	13	24	14	88
Winnipeg/St. Andrews	9	4,616	9	15	66	27	396
Yellowknife	25	1,580	25	15	44	25	134

Table 11-2
Local movements - civil, peak hour and peak day — NAV CANADA flight service stations

	Rank of movements	Number of movements	Peak hour occurrence			Peak day occurrence	
			Day in month	Hour in day	Number of movements	Day in month	Number of movements
Brandon Municipal	16	690	10	13	30	10	98
Campbell River	4	1,574	28	16	62	28	288
Castlegar	15	724	22	12	80	22	172
Charlottetown	21	372	23	18	26	25	72
Churchill	45	26	28	15	26	28	26
Cranbrook	24	298	6	11	24	9	30
Dawson Creek	36	92	15	15	26	15	86
Deer Lake	26	266	29	10	24	28	60
Fort McMurray	17	502	10	16	34	23	104
Fort Nelson	42	40	7	17	8	7	16
Fort St John	8	1,178	20	13	64	20	150
Fredericton International	29	166	16	10	16	19	28
Grande Prairie	20	394	9	17	20	9	54
High Level	13	1,046	10	8	44	10	228
Îles-de-la-Madeleine	0	0	0	0	0	0	0
Inuvik/Mike Zubko	43	32	16	10	12	16	12
Iqaluit	35	100	24	13	14	21	22
Kamloops	9	1,134	4	11	60	18	106
Kenora	39	82	13	15	24	13	24
Kingston	12	1,051	4	10	35	31	118
Kuujuuaq	40	78	25	15	14	25	42
Kuujuuarapik	0	0	0	0	0	0	0
La Grande Rivière	44	30	6	16	8	3	8
La Ronge	25	294	22	14	24	22	66
Lethbridge	10	1,102	4	16	30	13	88
Lloydminster	19	406	2	10	26	18	42
Medicine Hat	22	365	10	9	24	9	38
Mont-Joli	0	0	0	0	0	0	0
Nanaimo	14	950	12	11	80	12	120
Norman Wells	47	16	7	13	4	16	6
North Bay	1	2,926	27	16	70	28	374
Ottawa/Gatineau	6	1,368	21	14	48	25	192
Peace River	18	474	31	15	34	31	76
Penticton	7	1,362	26	15	42	21	172
Port Hardy	38	84	4	14	10	4	24
Prince Albert	33	110	29	15	14	29	36
Prince Rupert	41	64	3	19	12	22	20
Rankin Inlet	46	18	7	16	12	7	12
Red Deer Regional	3	2,126	23	11	38	22	158
Rouyn-Noranda	31	156	11	14	20	11	44
Saint John	23	312	24	11	22	24	60
Sept-Îles	28	192	27	11	24	30	28
Sioux Lookout	30	164	11	16	20	11	48
Smithers	48	8	18	11	8	18	8
St Anthony	50	2	13	16	2	13	2
St Catharines	5	1,372	30	16	38	30	138
Terrace	27	238	9	15	28	9	32
Thompson	37	92	2	10	18	2	34
Timmins	32	132	8	17	48	8	48
Val-D'or	11	1,054	23	11	98	28	246
Victoria Harbour	49	6	22	9	4	22	4
Wabush	0	0	0	0	0	0	0
Whitecourt	2	2,880	28	15	44	28	260
Williams Lake	34	102	31	19	28	18	30

Table 12-1
Local movements - military, peak hour and peak day — NAV CANADA towers

	Rank of movements	Number of movements	Peak hour occurrence			Peak day occurrence	
			Day in month	Hour in day	Number of movements	Day in month	Number of movements
Abbotsford	0	0	0	0	0	0	0
Boundary Bay	0	0	0	0	0	0	0
Calgary International	8	33	23	17	15	23	30
Calgary/Springbank	17	6	1	16	2	21	4
Chicoutimi/St-Honoré	0	0	0	0	0	0	0
Edmonton City Centre	18	4	27	13	2	27	4
Edmonton International	13	18	12	3	4	12	8
Edmonton/Villeneuve	0	0	0	0	0	0	0
Gander International	4	138	23	14	12	28	28
Halifax/Robert L Stanfield International	2	244	26	14	22	23	40
Hamilton	20	2	31	11	2	31	2
Kelowna	21	2	2	11	1	2	2
Kitchener/Waterloo	12	20	23	20	8	23	8
Langley	0	0	0	0	0	0	0
London	10	30	27	18	20	27	30
Moncton/Greater Moncton International	9	32	7	20	20	7	28
Montréal/Mirabel International	14	18	29	14	10	29	10
Montréal/Pierre Elliott Trudeau International	0	0	0	0	0	0	0
Montréal/St-Hubert	16	8	16	10	6	16	6
Oshawa	0	0	0	0	0	0	0
Ottawa/Macdonald-Cartier International	11	24	5	19	8	5	18
Pitt Meadows	0	0	0	0	0	0	0
Prince George	0	0	0	0	0	0	0
Québec/Jean Lesage International	22	2	19	15	2	19	2
Regina International	6	102	13	20	16	21	36
Saskatoon/John G Diefenbaker International	7	48	7	18	6	7	12
Sault Ste. Marie	0	0	0	0	0	0	0
St. John's International	0	0	0	0	0	0	0
St-Jean	0	0	0	0	0	0	0
Sudbury	0	0	0	0	0	0	0
Thunder Bay	15	10	30	14	4	30	8
Toronto/Buttonville Municipal	0	0	0	0	0	0	0
Toronto/City Centre	0	0	0	0	0	0	0
Toronto/Lester B Pearson International	0	0	0	0	0	0	0
Vancouver Harbour	0	0	0	0	0	0	0
Vancouver International	0	0	0	0	0	0	0
Victoria International	1	477	8	20	28	8	92
Whitehorse International	19	4	26	12	4	26	4
Windsor	0	0	0	0	0	0	0
Winnipeg/James Armstrong Richardson International	3	156	2	15	12	20	34
Winnipeg/St. Andrews	0	0	0	0	0	0	0
Yellowknife	5	124	12	11	14	12	26

Table 12-2
Local movements - military, peak hour and peak day — NAV CANADA flight service stations

	Rank of movements	Number of movements	Peak hour occurrence			Peak day occurrence	
			Day in month	Hour in day	Number of movements	Day in month	Number of movements
Brandon Municipal	1	60	20	12	18	20	22
Campbell River	0	0	0	0	0	0	0
Castlegar	0	0	0	0	0	0	0
Charlottetown	4	10	9	11	8	9	8
Churchill	0	0	0	0	0	0	0
Cranbrook	0	0	0	0	0	0	0
Dawson Creek	0	0	0	0	0	0	0
Deer Lake	2	26	7	9	24	7	26
Fort McMurray	0	0	0	0	0	0	0
Fort Nelson	0	0	0	0	0	0	0
Fort St John	0	0	0	0	0	0	0
Fredericton International	3	20	14	21	8	14	8
Grande Prairie	0	0	0	0	0	0	0
High Level	0	0	0	0	0	0	0
Îles-de-la-Madeleine	0	0	0	0	0	0	0
Inuvik/Mike Zubko	0	0	0	0	0	0	0
Iqaluit	0	0	0	0	0	0	0
Kamloops	0	0	0	0	0	0	0
Kenora	0	0	0	0	0	0	0
Kingston	0	0	0	0	0	0	0
Kuujuuaq	0	0	0	0	0	0	0
Kuujuuarapik	0	0	0	0	0	0	0
La Grande Rivière	0	0	0	0	0	0	0
La Ronge	0	0	0	0	0	0	0
Lethbridge	0	0	0	0	0	0	0
Lloydminster	0	0	0	0	0	0	0
Medicine Hat	0	0	0	0	0	0	0
Mont-Joli	0	0	0	0	0	0	0
Nanaimo	0	0	0	0	0	0	0
Norman Wells	0	0	0	0	0	0	0
North Bay	0	0	0	0	0	0	0
Ottawa/Gatineau	0	0	0	0	0	0	0
Peace River	0	0	0	0	0	0	0
Penticton	0	0	0	0	0	0	0
Port Hardy	0	0	0	0	0	0	0
Prince Albert	0	0	0	0	0	0	0
Prince Rupert	0	0	0	0	0	0	0
Rankin Inlet	0	0	0	0	0	0	0
Red Deer Regional	0	0	0	0	0	0	0
Rouyn-Noranda	0	0	0	0	0	0	0
Saint John	0	0	0	0	0	0	0
Sept-Îles	0	0	0	0	0	0	0
Sioux Lookout	0	0	0	0	0	0	0
Smithers	0	0	0	0	0	0	0
St Anthony	0	0	0	0	0	0	0
St Catharines	0	0	0	0	0	0	0
Terrace	0	0	0	0	0	0	0
Thompson	0	0	0	0	0	0	0
Timmins	0	0	0	0	0	0	0
Val-D'or	0	0	0	0	0	0	0
Victoria Harbour	0	0	0	0	0	0	0
Wabush	0	0	0	0	0	0	0
Whitecourt	0	0	0	0	0	0	0
Williams Lake	0	0	0	0	0	0	0

Methodology

Survey universe

Coverage

The survey covers all aircraft movements at Canadian airports with NAV CANADA air traffic control towers and flight service stations.

Methodology survey

The Itinerant movement record is designed to capture:

- Aircraft identification
- Aircraft type
- The last station before landing at the reporting airport or the next station after take-off
- Arrival or departure
- Time of movement
- Runway used
- Flight rules (Instrument flight rules or Visual flight rules).

The Local aircraft movement record provides for reports of local movements by:

- Hour
- Single engine aircraft
- Multi-engine aircraft
- Jet aircraft
- Military aircraft
- Date of movement

Processing of aircraft movement statistics involves several stages. Preliminary monthly data by class of operation are released in **Preliminary aircraft movement statistics**, catalogue no. 51F0001P (TP-1496 (NAV CANADA towered airports only)). Data which follow in **Aircraft movement statistics - Monthly** report, catalogue nos. 51-007-X and 51-008-X (TP-141) may contain revisions to the originally released figures. Annual tables, which may reflect further revisions, are released in the publication, **Aircraft movement statistics - Annual** report - TP-577. In particular, data on itinerant movements by type of operation may reflect revisions as various sources of comparative information (data collected from commercial air carriers by the Aviation Statistics Centre, Statistics Canada) become available during the processing cycle. Finally, when revisions are required after the release of TP-577, they are contained in the five year historical summary of subsequent editions of TP-577.

The records are completed daily, based on a twenty-four hour clock running from zero hour to 23:59. The times recorded are Coordinated Universal Time (UTC); however, published statistics are shown in local times. The records are transmitted to the Aviation Statistics Centre.

The Aviation Statistics Centre maintains a data base of parameter files of current information on all registered aircraft. The storage of this information reduces the reporting burden of the survey respondents and limits the element of human error associated with the preparation of source documents.

Other parameter files information includes registered aircraft identifications and their corresponding aircraft types, gross take-off weights, types of power plant (piston, jet or turboprop); whether the aircraft are fixed wing, helicopters or gliders. This information also provides a basis for identifying type of flights (commercial, private and government) and the geographical area in which the flights take place.

The parameter files also include airport environment information against which the airport category is checked; the reported runway is validated and the time difference between UTC and Local is assigned.

Data quality and limitations

Aircraft movement statistics are accumulated from data originating with air traffic control tower units or flight service station personnel. Because staff in these positions are highly trained in factual observation and reporting, the entries in the data bank are of a high quality.

The procedures for reporting aircraft movements on the Daily air traffic records by tower units are described in the NAV CANADA Air traffic control manual of operations (TP 703) Volume 1, Para. 1023 to 1023.5. Definitions for terms used in these paragraphs can be found in the appendix I "Glossary of terms" of this report.

To maintain uniformity in the reporting of source data, ASC issues to air traffic control units an "Air traffic designators" handbook (TP 143) listing the official Transport Canada aircraft type designators and the designators of various domestic and international air carriers. This handbook and another titled "Canada flight supplement" listing various airport codes serve as references to help ensure the reporting of the proper aircraft identity and the point of origin and destination of flights.

The processing system contains editing procedures designed to identify data errors occurring during transcription or during data capture of forms. Identified errors are manually corrected by ASC editing staff.

Errors may occur if an aircraft type code which exists is reported or data captured in error for a flight. For example, the reporting or keying of B727 for a flight actually performed by a B737 may not be detected during the system editing. That the aircraft type information is recorded by highly trained air traffic control tower staff using a common handbook of official aircraft codes will minimize this problem.

Similarly, the breakdown of the data on a geographic basis by use of location codes can be subject to error. For smaller locations, alphanumeric location codes are often used and the sequence of numbers and letters determines the geographic area to which the data are assigned. In some cases, where a sequence error has been introduced into the system either at the reporting unit or at data capture, a domestic movement may be classified as transborder or vice versa. The use of common manuals of location identifiers works to minimize this occurrence.

Factors influencing the data

Sydney – the Flight Service Station closed in February 2006. Sydney now appears in Volume II – Airports without air traffic control towers.

Roberval – the Flight Service Station closed in November 2006. As of December 2006, Roberval appears in Volume II – Airports without air traffic control towers.

Appendix I

Glossary of terms

Air carrier

Aircraft operators licensed by the Canadian Transportation Agency to transport persons, mail and/or goods by air.

Levels I to III air carriers (Defn 2000) – This includes every Canadian air carrier that, in each of the two calendar years immediately preceding the report year, realized annual gross revenues of \$1,000,000 or more for the air services for which the air carrier held a licence. Also includes foreign air carriers.

Levels IV to VI air carriers (Defn 2000) – Canadian air carriers not classified in report level I-III that, in each of the two calendar years immediately preceding the report year, realized annual gross revenues of less than \$1,000,000 for the air services for which the air carrier held a licence. Since 2000, levels IV and VI are no longer applicable.

Aircraft movement

A take off, a landing, or a simulated approach by an aircraft. ATC Manops amendment 8-8-83. NC-703.

Class of operation

Aircraft movements are classified as either “Itinerant” or “Local”.

Commercial

Flights by aircraft operators licensed by the Canadian Transportation Agency to perform commercial air services. Commercial operations are divided into two categories: **Air carrier** and **Other commercial**.

Domestic itinerant movements

Movements, at a Canadian airport, of aircraft departing to or arriving from another point in Canada.

FSS

Flight service station.

Government – Civil

Aircraft owned by federal, provincial and municipal bodies as well as foreign states, but excluding those owned by crown corporations, boards and commissions. Such aircraft are coded “3” under “Purpose” in the Canadian civil aircraft register.

Government – Military

Aircraft of any branch of the armed forces of any nation.

Gross take-off weight

The maximum weight for which the aircraft is licensed to operate. For operational purposes, all weights are rounded upwards to the next 1,000 kilograms. Thus 3,200 kilograms becomes 4,000 kilograms.

I.F.R. flight

A flight conducted in accordance with Instrument flight rules.

International movements

Movements, at a Canadian airport, of aircraft arriving from or departing to a point outside Canada. International movements are subclassified into “transborder” (to or from a point in the United States including Alaska but excluding Hawaii), and “other international” (to or from points in countries other than Canada and the United States).

Since aircraft movements are reported on the basis of place “arrived from” or “departed to”, an arrival at Mirabel airport from London, England would appear under “other international”. If the same aircraft moved on to Toronto, both the departure at Mirabel and the arrival at Toronto would be shown as “domestic”.

Itinerant movements

At Airports **with** control towers and/or Flight service stations: for the purpose of completing air traffic records, itinerant movements are considered as movements in which aircraft proceed to or arrive from another location; or where aircraft leave the circuit but return without landing at another airport. At Airports **without** control towers: an aircraft movement in which the aircraft arrives from or departs to a point other than the reporting airport; or a movement by an aircraft that leaves the close proximity of an airport and returns without landing at another airport.

Local movements

At Airports **with** control towers and/or Flight service stations: for the purpose of completing air traffic records, local movements are considered as movements in which the aircraft remains in the circuit. At Airports **without** control towers: an aircraft movement in which the aircraft remains in the close proximity of the airport. Local movements are often carried out during training flights (touch-and-go), equipment tests etc.

Other commercial

Flights performed by **Commercial** aircraft operators not included in the **Air carrier** categories. Flying schools, agricultural sprayers, water-bombers, aerial photography and survey, etc.

Power plant

The source of propulsion. For example, piston engines, turbo-propellers and jet engines. “Helicopters”, in this report, include both piston and turboshaft-driven engines.

Private aircraft

Aircraft used solely for private purposes, not for hire and compensation, which are classified as “Private” or “Private Restricted” in the Canadian civil aircraft register or similar registries of other countries. Owners include individuals, groups and business firms.

Runway 88

Through control zone flights, i.e. flights which communicate with the tower while transiting the tower control zone to another destination without landing at the reporting airport.

Data for these runways are not included in the grand total.

Simulated approaches

Movements that are either missed instrument or practice instrument approaches without landing.

TC

Transport Canada

Tower control zone

A controlled airspace within the proximity of an air traffic control tower, usually within a radius of less than 24 kilometres of the tower.

V.F.R. flight

A flight conducted in accordance with Visual flight rules.

Weight group

The classification of weight classes in groups for statistical purposes.