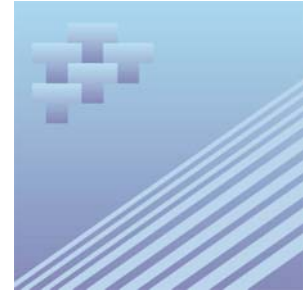




Catalogue no. 51-007-XIE

Aircraft Movement Statistics: NAV CANADA Towers and Flight Service Stations



April 2007



Statistics
Canada

Statistique
Canada

Canada

How to obtain more information

Specific inquiries about this product and related statistics or services should be directed to: Transportation Division, Statistics Canada, Ottawa, Ontario, K1A 0T6 (telephone: 1-866-500-8400).

For information on the wide range of data available from Statistics Canada, you can contact us by calling one of our toll free numbers. You can also contact us by e-mail or by visiting our website at www.statcan.ca.

National inquiries line **1-800-263-1136**

National telecommunications device for the hearing impaired **1-800-363-7629**

Depository Services Program inquiries **1-800-700-1033**

Fax line for Depository Services Program **1-800-889-9734**

E-mail inquiries **infostats@statcan.ca**

Website **www.statcan.ca**

Information to access the product

This product, catalogue no. 51-007-XIE, is available for free in electronic format. To obtain a single issue, visit our website at www.statcan.ca and select Publications.

Standards of service to the public

Statistics Canada is committed to serving its clients in a prompt, reliable and courteous manner. To this end, the Agency has developed *standards of service* which its employees observe in serving its clients.

To obtain a copy of these service standards, please contact Statistics Canada toll free at 1-800-263-1136. The service standards are also published on www.statcan.ca under About us > Providing services to Canadians.



Statistics Canada
Transportation Division

Aircraft Movement Statistics: NAV CANADA Towers and Flight Service Stations

April 2007

Published by authority of the Minister responsible for Statistics Canada

© Minister of Industry, 2007 and the © Minister of Transport, 2007.

All rights reserved. The content of this electronic publication may be reproduced, in whole or in part, and by any means, without further permission from Statistics Canada, subject to the following conditions: that it be done solely for the purposes of private study, research, criticism, review or newspaper summary, and/or for non-commercial purposes; and that Statistics Canada be fully acknowledged as follows: Source (or "Adapted from", if appropriate): Statistics Canada, year of publication, name of product, catalogue number, volume and issue numbers, reference period and page(s). Otherwise, no part of this publication may be reproduced, stored in a retrieval system or transmitted in any form, by any means—electronic, mechanical or photocopy—or for any purposes without prior written permission of Licensing Services, Client Services Division, Statistics Canada, Ottawa, Ontario, Canada K1A 0T6.

May 2007

Catalogue no. 51-007-XIE, Vol. 1, No. 4

ISSN 1911-6314

Frequency: Monthly

Ottawa

La version française de cette publication est disponible sur demande (n° 51-007-XIF au catalogue).

Note of appreciation

Canada owes the success of its statistical system to a long standing partnership between Statistics Canada, the citizens of Canada, its businesses, governments and other institutions. Accurate and timely statistical information could not be produced without their continued cooperation and goodwill.

User information

Symbols

The following standard symbols are used in Statistics Canada publications:

- . not available for any reference period
- .. not available for a specific reference period
- ... not applicable
- 0 true zero or a value rounded to zero
- 0^s value rounded to 0 (zero) where there is a meaningful distinction between true zero and the value that was rounded
- p preliminary
- r revised
- x suppressed to meet the confidentiality requirements of the *Statistics Act*
- E use with caution
- F too unreliable to be published

Acknowledgements

This publication was prepared by the Aviation Statistics Centre, of the Transportation Division, Statistics Canada under the general direction of **Gord Baldwin**, Director, Transportation Division. **Kathie Davidson**, **Maureen de Souza**, **Marc Trudel**, **John Scolli** and **Sylvie Savard** contributed to the preparation of this publication.

Table of contents

Highlights	5
Analysis	6
Related products	7
Statistical tables	
1 Total aircraft movements by class of operation	10
1-1 NAV CANADA towers	10
1-2 NAV CANADA flight service stations	11
2 Total aircraft movements, civil and military	12
2-1 NAV CANADA towers	12
2-2 NAV CANADA flight service stations	13
3 Itinerant movements by type of operator	14
3-1 NAV CANADA towers	14
3-2 NAV CANADA flight service stations	15
4 Itinerant movements by I.F.R. (Instrument flight rules) and V.F.R. (Visual flight rules) and runway 88 movements	16
4-1 NAV CANADA towers	16
4-2 NAV CANADA flight service stations	17
5 Itinerant movements by type of power plant	18
5-1 NAV CANADA towers	18
5-2 NAV CANADA flight service stations	19
6 Itinerant movements by aircraft weight group	20
6-1 NAV CANADA towers	20
6-2 NAV CANADA flight service stations	21
7 Itinerant movements, domestic, transborder and international	22
7-1 NAV CANADA towers	22
7-2 NAV CANADA flight service stations	26

Table of contents – continued

8	Total aircraft movements, peak hour and peak day	31
8-1	NAV CANADA towers	31
8-2	NAV CANADA flight service stations	32
9	Itinerant aircraft movements, peak hour and peak day	33
9-1	NAV CANADA towers	33
9-2	NAV CANADA flight service stations	34
10	Local movements, peak hour and peak day	35
10-1	NAV CANADA towers	35
10-2	NAV CANADA flight service stations	36
11	Local movements - civil, peak hour and peak day	37
11-1	NAV CANADA towers	37
11-2	NAV CANADA flight service stations	38
12	Local movements - military, peak hour and peak day	39
12-1	NAV CANADA towers	39
12-2	NAV CANADA flight service stations	40

Data quality, concepts and methodology

Methodology	41
Data quality and limitations	43

Appendix

I	Glossary of terms	44
---	-------------------	----

Highlights

- For the eleventh consecutive month, aircraft take-offs and landings at Canadian airports with NAV CANADA air traffic control towers and flight service stations increased in year-over-year monthly comparisons. These 96 airports reported 505,135 movements in April 2007 compared with 484,635 movements at 97 airports in April 2006, an increase of 4.2% (+20,500 movements).
- Itinerant movements (flights from one airport to another) increased by 1.8% (+6,144 movements) in April 2007 compared with the same month a year earlier.
- Local movements (flights that remain in the vicinity of the airport) increased by 9.5% (+14,356 movements) in April 2007 compared with April 2006.

Table 1
Distribution of aircraft movements at NAV CANADA Towers and Flight Service Stations

	NAV CANADA towers		NAV CANADA Flight Service Stations		Total	
	number	Change from April 2007/ April 2006 percent	number	Change from April 2007/ April 2006 percent	number	Change from April 2007/ April 2006 percent
Grand total	400,069	4.7	105,066	2.6	505,135	4.2
Itinerant movements						
Air carriers	195,798	7.5	52,487	0.0	248,285	5.8
Other commercial movements	34,560	-7.1	5,682	-9.0	40,242	-7.4
Private movements	27,562	-9.7	9,928	-9.0	37,490	-9.5
Government civil movements	5,693	-6.1	2,149	-8.2	7,842	-6.7
Government military movements	3,404	-8.1	1,856	38.6	5,260	4.3
Itinerant total	267,017	2.8	72,102	-1.7	339,119	1.8
Local movements						
Civil local movements	131,242	8.3	32,250	13.9	163,492	9.4
Military local movements	1,810	23.1	714	-1.9	2,524	14.8
Local total	133,052	8.5	32,964	13.5	166,016	9.5

Analysis

For the eleventh consecutive month, aircraft take-offs and landings at Canadian airports with NAV CANADA air traffic control towers and flight service stations increased in year-over-year monthly comparisons. These 96 airports reported 505,135 movements in April 2007 compared with 484,635 movements at 97 airports in April 2006, an increase of 4.2% (+20,500 movements).

Itinerant movements (flights from one airport to another) increased by 1.8% (+6,144 movements) in April 2007 compared with the same month a year earlier.

Local movements (flights that remain in the vicinity of the airport) increased by 9.5% (+14,356 movements) in April 2007 compared with April 2006.

Airports with NAV CANADA air traffic control towers

The 42 Canadian airports with NAV CANADA air traffic control towers reported 400,069 aircraft take-offs and landings in April, up 4.7% compared with April 2006 (382,266 movements). Year-over-year increases in aircraft movements were reported by 24 of the airports in April 2007. The variations ranged from 97.4% at Moncton/Greater Moncton International to -31.5% at London.

Itinerant movements (flights from one airport to another) increased by 2.8% (+7,376 movements) in April compared with the same month a year earlier. Year-over-year variations in itinerant movements ranged from a 71.3% increase (+2,436 movements) at Moncton/Greater Moncton International to a decline of -31.0% (-520 movements) at St-Jean, Québec.

Local movements (flights that remain in the vicinity of the airport) increased by 8.5% (+10,427 movements) in April compared with April 2006. Year-over-year variations in local movements ranged from a 152.9% increase (+2,889 movements) at Kelowna to a decline of 53.1% (-528 movements) at Edmonton International.

Airports with NAV CANADA flight service stations

The 54 Canadian airports with NAV CANADA flight service stations reported 105,066 aircraft take-offs and landings in April, up 2.6% compared with 55 flight service stations in April 2006 (102,369 movements). Year-over-year increases in aircraft movements were reported by 33 of these airports in April 2007. The variations ranged from 61.7% at Terrace, British Columbia to -31.2% at Dawson Creek, British Columbia.

Itinerant movements (flights from one airport to another) decreased by 1.7% (-1,232 movements) in April compared with the same month a year earlier. Year-over-year variations in itinerant movements ranged from a 47.8% increase (+414 movements) at Terrace to a decline of 37.1% (-269 movements) at Dawson Creek.

Local movements (flights that remain in the vicinity of the airport) increased by 13.5% (+3,929 movements) in April compared with April 2006. St. Catharines showed the largest increase in local movements in April 2007 compared with April 2006, increasing by 924 movements (+57.1%) to reach 2,542 movements.

Related products

Selected CANSIM tables from Statistics Canada

401-0005	Aircraft movements by class of operation, airports with NAV CANADA towers, preliminary, monthly
401-0006	Aircraft movements by class of operation, airports with NAV CANADA towers, preliminary, annual
401-0007	Aircraft movements, by class of operation and peak hour and peak day of movements, airports with NAV CANADA towers, monthly
401-0008	Aircraft movements, by civil and military movements, airports with NAV CANADA towers, monthly
401-0009	Itinerant movements, by type of operation, airports with NAV CANADA towers, monthly
401-0010	Itinerant movements, by instrument flight rules, visual flight rules and runway 88, airports with NAV CANADA towers, monthly
401-0011	Itinerant movements, by type of power plant, airports with NAV CANADA towers, monthly
401-0012	Itinerant movements, by aircraft gross take-off weight, airports with NAV CANADA towers, monthly
401-0013	Domestic and international itinerant movements, by type of operation, airports with NAV CANADA towers, monthly
401-0014	Aircraft movements, by class of operation and peak hour and peak day of movements, airports with NAV CANADA flight service stations, monthly
401-0015	Aircraft movements, by civil and military movements, airports with NAV CANADA flight service stations, monthly
401-0016	Itinerant movements, by type of operation, airports with NAV CANADA flight service stations, monthly
401-0017	Itinerant movements, by instrument flight rules, visual flight rules and runway 88, airports with NAV CANADA flight service stations, monthly
401-0018	Itinerant movements, by type of power plant, airports with NAV CANADA flight service stations, monthly
401-0019	Itinerant movements, by aircraft gross take-off weight, airports with NAV CANADA flight service stations, monthly
401-0020	Domestic and international itinerant movements, by type of operation, airports with NAV CANADA flight service stations, monthly

Selected surveys from Statistics Canada

2715	Aircraft Movement Statistics
------	------------------------------

Selected summary tables from Statistics Canada

- *Aircraft movements by class of operation (monthly)*

Statistical tables

Table 1-1
Total aircraft movements by class of operation — NAV CANADA towers

	Total		Itinerant		Local	
	Rank of movements	Number of movements	Rank of movements	Number of movements	Rank of movements	Number of movements
Abbotsford	5	18,379	11	7,007	2	11,372
Boundary Bay	3	22,221	9	7,804	1	14,417
Calgary International	4	19,289	3	19,055	37	234
Calgary/Springbank	9	12,831	21	4,872	3	7,959
Chicoutimi/St-Honoré	24	6,795	33	2,494	13	4,301
Edmonton City Centre	27	6,507	16	5,360	30	1,147
Edmonton International	13	10,571	6	10,105	35	466
Edmonton/Villeneuve	31	5,311	40	1,501	15	3,810
Gander International	40	2,843	37	1,944	33	899
Halifax/Robert L Stanfield International	22	7,356	12	6,405	32	951
Hamilton	33	5,108	27	3,287	25	1,821
Kelowna	18	9,589	22	4,810	10	4,779
Kitchener/Waterloo	26	6,581	29	3,108	16	3,473
Langley	19	8,257	28	3,155	8	5,102
London	28	6,095	23	3,991	23	2,104
Moncton/Greater Moncton International	14	10,406	13	5,852	12	4,554
Montréal/Mirabel International	41	2,063	39	1,635	36	428
Montréal/Pierre Elliott Trudeau International	6	17,875	4	17,875	0	0
Montréal/St-Hubert	10	12,209	17	5,267	4	6,942
Oshawa	29	6,054	36	2,226	14	3,828
Ottawa/Macdonald-Cartier International	12	11,544	7	9,020	21	2,524
Pitt Meadows	21	7,537	31	2,629	9	4,908
Prince George	35	3,907	34	2,351	29	1,556
Québec/Jean Lesage International	15	10,146	10	7,348	19	2,798
Regina International	32	5,151	25	3,523	27	1,628
Saskatoon/John G Diefenbaker International	20	7,896	20	4,910	18	2,986
Sault Ste. Marie	34	5,065	35	2,343	20	2,722
St. John's International	39	3,001	30	2,817	38	184
St-Jean	42	1,712	42	1,160	34	552
Sudbury	37	3,617	32	2,561	31	1,056
Thunder Bay	16	9,780	18	5,175	11	4,605
Toronto/Buttonville Municipal	11	11,755	14	5,709	6	6,046
Toronto/City Centre	25	6,727	26	3,363	17	3,364
Toronto/Lester B Pearson International	1	34,227	1	34,227	0	0
Vancouver Harbour	30	5,369	15	5,367	39	2
Vancouver International	2	25,262	2	25,262	0	0
Victoria International	7	14,199	8	8,067	5	6,132
Whitehorse International	38	3,204	41	1,300	24	1,904
Windsor	36	3,713	38	1,899	26	1,814
Winnipeg/James Armstrong Richardson International	8	13,057	5	11,479	28	1,578
Winnipeg/St. Andrews	17	9,695	24	3,813	7	5,882
Yellowknife	23	7,165	19	4,941	22	2,224
Total of NAV CANADA towers (42)	.	400,069	.	267,017	.	133,052

Table 1-2
Total aircraft movements by class of operation — NAV CANADA flight service stations

	Total		Itinerant		Local	
	Rank of movements	Number of movements	Rank of movements	Number of movements	Rank of movements	Number of movements
Brandon Municipal	23	1,982	22	1,348	18	634
Campbell River	13	2,706	11	1,792	14	914
Castlegar	22	1,989	39	863	11	1,126
Charlottetown	26	1,797	27	1,241	20	556
Churchill	45	763	42	763	0	0
Cranbrook	39	1,119	38	891	30	228
Dawson Creek	50	550	51	456	40	94
Deer Lake	29	1,673	21	1,451	31	222
Fort McMurray	1	5,604	1	4,092	7	1,512
Fort Nelson	34	1,462	26	1,244	32	218
Fort St John	18	2,213	12	1,781	23	432
Fredericton International	28	1,679	20	1,479	34	200
Grande Prairie	8	3,261	5	2,335	13	926
High Level	36	1,351	41	827	21	524
Îles-de-la-Madeleine	53	408	52	408	0	0
Inuvik/Mike Zubko	40	1,086	30	1,052	45	34
Iqaluit	32	1,479	23	1,321	37	158
Kamloops	3	4,323	8	2,061	3	2,262
Kenora	38	1,123	35	995	39	128
Kingston	14	2,545	19	1,511	12	1,034
Kuujuuaq	44	805	43	751	43	54
Kuujuuarapik	51	519	49	519	0	0
La Grande Rivière	46	706	46	690	46	16
La Ronge	21	2,064	14	1,758	27	306
Lethbridge	16	2,396	16	1,544	15	852
Lloydminster	37	1,298	45	704	19	594
Medicine Hat	25	1,834	33	1,028	16	806
Mont-Joli	54	354	54	310	44	44
Nanaimo	7	3,349	6	2,137	9	1,212
Norman Wells	31	1,555	24	1,287	29	268
North Bay	2	5,149	7	2,115	1	3,034
Ottawa/Gatineau	15	2,429	34	1,011	8	1,418
Peace River	35	1,391	36	955	22	436
Penticton	9	3,203	17	1,519	6	1,684
Port Hardy	43	919	40	863	42	56
Prince Albert	27	1,683	15	1,547	38	136
Prince Rupert	49	558	53	340	33	218
Rankin Inlet	41	1,077	29	1,077	0	0
Red Deer Regional	4	4,275	9	2,055	4	2,220
Rouyn-Noranda	33	1,477	31	1,049	24	428
Saint John	19	2,196	18	1,512	17	684
Sept-Îles	17	2,305	10	1,921	25	384
Sioux Lookout	12	2,715	4	2,527	35	188
Smithers	48	606	48	598	47	8
St Anthony	52	464	50	462	48	2
St Catharines	5	3,766	28	1,224	2	2,542
Terrace	30	1,588	25	1,280	26	308
Thompson	11	2,721	3	2,557	36	164
Timmins	24	1,844	13	1,760	41	84
Val-D'or	20	2,182	32	1,046	10	1,136
Victoria Harbour	6	3,744	2	3,744	0	0
Wabush	47	625	47	625	0	0
Whitecourt	10	3,141	37	943	5	2,198
Williams Lake	42	1,015	44	733	28	282
Total of all flight service stations (54)	.	105,066	.	72,102	.	32,964

Table 2-1
Total aircraft movements, civil and military — NAV CANADA towers

	Civil movements			Military movements				
	Total	Itinerant		Local	Total	Itinerant		Local
		Commercial	Private and government					
	number							
Abbotsford	18,316	5,557	1,387	11,372	63	63	0	
Boundary Bay	22,217	6,255	1,545	14,417	4	4	0	
Calgary International	19,195	17,586	1,375	234	94	94	0	
Calgary/Springbank	12,809	3,333	1,521	7,955	22	18	4	
Chicoutimi/St-Honoré	6,771	2,267	213	4,291	24	14	10	
Edmonton City Centre	6,452	3,829	1,480	1,143	55	51	4	
Edmonton International	10,454	9,714	300	440	117	91	26	
Edmonton/Villeneuve	5,303	1,025	468	3,810	8	8	0	
Gander International	2,408	1,257	437	714	435	250	185	
Halifax/Robert L. Stanfield International	7,098	5,840	405	853	258	160	98	
Hamilton	5,078	2,675	602	1,801	30	10	20	
Kelowna	9,507	4,041	723	4,743	82	46	36	
Kitchener/Waterloo	6,500	2,324	721	3,455	81	63	18	
Langley	8,250	1,827	1,321	5,102	7	7	0	
London	6,093	2,894	1,095	2,104	2	2	0	
Moncton/Greater Moncton International	10,387	5,457	376	4,554	19	19	0	
Montréal/Mirabel International	2,027	1,212	393	422	36	30	6	
Montréal/Pierre Elliott Trudeau International	17,854	16,163	1,691	0	21	21	0	
Montréal/St-Hubert	12,111	4,048	1,121	6,942	98	98	0	
Oshawa	6,050	1,624	598	3,828	4	4	0	
Ottawa/Macdonald-Cartier International	11,374	8,088	781	2,505	170	151	19	
Pitt Meadows	7,530	1,668	954	4,908	7	7	0	
Prince George	3,896	1,866	474	1,556	11	11	0	
Québec/Jean Lesage International	9,987	5,990	1,205	2,792	159	153	6	
Regina International	4,884	2,833	505	1,546	267	185	82	
Saskatoon/John G. Diefenbaker International	7,517	3,886	779	2,852	379	245	134	
Sault Ste. Marie	4,997	2,049	258	2,690	68	36	32	
St. John's International	2,869	2,463	222	184	132	132	0	
St-Jean	1,557	564	441	552	155	155	0	
Sudbury	3,566	2,035	475	1,056	51	51	0	
Thunder Bay	9,688	4,599	502	4,587	92	74	18	
Toronto/Buttonville Municipal	11,738	4,002	1,690	6,046	17	17	0	
Toronto/City Centre	6,653	2,890	399	3,364	74	74	0	
Toronto/Lester B. Pearson International	34,213	32,942	1,271	0	14	14	0	
Vancouver Harbour	5,363	5,281	80	2	6	6	0	
Vancouver International	25,220	23,796	1,424	0	42	42	0	
Victoria International	13,462	6,217	1,655	5,590	737	195	542	
Whitehorse International	3,202	932	366	1,904	2	2	0	
Windsor	3,691	1,656	233	1,802	22	10	12	
Winnipeg/James Armstrong Richardson International	11,962	9,744	1,062	1,156	1,095	673	422	
Winnipeg/St. Andrews	9,685	3,379	424	5,882	10	10	0	
Yellowknife	6,921	4,550	283	2,088	244	108	136	
Total of NAV CANADA towers (42)	394,855	230,358	33,255	131,242	5,214	3,404	1,810	

Table 2-2
Total aircraft movements, civil and military — NAV CANADA flight service stations

	Civil movements			Military movements				
	Total	Itinerant		Local	Total	Itinerant		Local
		Commercial	Private and government					
	number							
Brandon Municipal	1,568	482	530	556	414	336	78	
Campbell River	2,647	1,157	576	914	59	59	0	
Castlegar	1,979	786	67	1,126	10	10	0	
Charlottetown	1,745	1,106	115	524	52	20	32	
Churchill	763	743	20	0	0	0	0	
Cranbrook	1,109	696	185	228	10	10	0	
Dawson Creek	550	348	108	94	0	0	0	
Deer Lake	1,663	1,361	80	222	10	10	0	
Fort McMurray	5,590	3,610	468	1,512	14	14	0	
Fort Nelson	1,460	1,060	182	218	2	2	0	
Fort St John	2,213	1,516	265	432	0	0	0	
Fredericton International	1,551	1,154	205	192	128	120	8	
Grande Prairie	3,251	1,783	542	926	10	10	0	
High Level	1,327	746	57	524	24	24	0	
Îles-de-la-Madeleine	404	360	44	0	4	4	0	
Inuvik/Mike Zubko	1,036	970	36	30	50	46	4	
Iqaluit	1,471	1,212	101	158	8	8	0	
Kamloops	4,265	1,543	490	2,232	58	28	30	
Kenora	1,050	825	97	128	73	73	0	
Kingston	2,531	1,179	318	1,034	14	14	0	
Kuujuaq	803	719	30	54	2	2	0	
Kuujuarapik	519	515	4	0	0	0	0	
La Grande Rivière	706	664	26	16	0	0	0	
La Ronge	1,980	1,383	291	306	84	84	0	
Lethbridge	2,382	1,063	467	852	14	14	0	
Lloydminster	1,282	441	247	594	16	16	0	
Medicine Hat	1,800	750	250	800	34	28	6	
Mont-Joli	349	276	29	44	5	5	0	
Nanaimo	2,847	1,208	853	786	502	76	426	
Norman Wells	1,094	908	26	160	461	353	108	
North Bay	5,104	1,637	445	3,022	45	33	12	
Ottawa/Gatineau	2,415	475	522	1,418	14	14	0	
Peace River	1,391	829	126	436	0	0	0	
Penticton	3,096	1,075	343	1,678	107	101	6	
Port Hardy	899	678	165	56	20	20	0	
Prince Albert	1,607	1,161	310	136	76	76	0	
Prince Rupert	558	296	44	218	0	0	0	
Rankin Inlet	1,077	1,065	12	0	0	0	0	
Red Deer Regional	4,265	1,500	545	2,220	10	10	0	
Rouyn-Noranda	1,477	758	291	428	0	0	0	
Saint John	2,184	1,127	373	684	12	12	0	
Sept-Îles	2,282	1,742	156	384	23	23	0	
Sioux Lookout	2,713	2,475	50	188	2	2	0	
Smithers	606	467	131	8	0	0	0	
St Anthony	459	354	105	0	5	3	2	
St Catharines	3,620	675	403	2,542	146	146	0	
Terrace	1,588	1,222	58	308	0	0	0	
Thompson	2,721	2,364	193	164	0	0	0	
Timmins	1,838	1,610	144	84	6	6	0	
Val-D'or	2,170	813	221	1,136	12	12	0	
Victoria Harbour	3,726	3,345	381	0	18	18	0	
Wabush	625	577	48	0	0	0	0	
Whitecourt	3,135	854	83	2,198	6	6	0	
Williams Lake	1,005	506	219	280	10	8	2	
Total of all flight service stations (54)	102,496	58,169	12,077	32,250	2,570	1,856	714	

Table 3-1
Itinerant movements by type of operator — NAV CANADA towers

	Total	Air carrier movements		Other commercial movements	Private movements	Government movements	
		Levels I to III and foreign	Levels IV to VI			Civil	Military
	number						
Abbotsford	7,007	833	3,014	1,710	1,126	261	63
Boundary Bay	7,804	24	1,363	4,868	1,473	72	4
Calgary International	19,055	16,048	911	627	1,245	130	94
Calgary/Springbank	4,872	33	1,015	2,285	1,487	34	18
Chicoutimi/St-Honoré	2,494	24	927	1,316	207	6	14
Edmonton City Centre	5,360	1,482	792	1,555	1,096	384	51
Edmonton International	10,105	8,998	556	160	249	51	91
Edmonton/Villeneuve	1,501	0	313	712	464	4	8
Gander International	1,944	371	876	10	284	153	250
Halifax/Robert L Stanfield International	6,405	5,203	600	37	311	94	160
Hamilton	3,287	1,749	836	90	449	153	10
Kelowna	4,810	2,439	369	1,233	613	110	46
Kitchener/Waterloo	3,108	289	1,388	647	718	3	63
Langley	3,155	121	195	1,511	1,301	20	7
London	3,991	1,188	445	1,261	1,033	62	2
Moncton/Greater Moncton International	5,852	5,385	35	37	147	229	19
Montréal/Mirabel International	1,635	841	320	51	355	38	30
Montréal/Pierre Elliott Trudeau International	17,875	15,166	669	328	1,466	225	21
Montréal/St-Hubert	5,267	2,053	493	1,502	1,017	104	98
Oshawa	2,226	107	94	1,423	598	0	4
Ottawa/Macdonald-Cartier International	9,020	6,455	357	1,276	374	407	151
Pitt Meadows	2,629	26	624	1,018	933	21	7
Prince George	2,351	1,207	494	165	381	93	11
Québec/Jean Lesage International	7,348	3,737	762	1,491	756	449	153
Regina International	3,523	1,954	822	57	302	203	185
Saskatoon/John G Diefenbaker International	4,910	2,672	841	373	472	307	245
Sault Ste. Marie	2,343	788	176	1,085	122	136	36
St. John's International	2,817	1,216	1,193	54	93	129	132
St-Jean	1,160	149	223	192	404	37	155
Sudbury	2,561	1,442	558	35	223	252	51
Thunder Bay	5,175	2,488	1,068	1,043	344	158	74
Toronto/Buttontville Municipal	5,709	475	609	2,918	1,644	46	17
Toronto/City Centre	3,363	1,022	705	1,163	374	25	74
Toronto/Lester B Pearson International	34,227	32,402	377	163	1,235	36	14
Vancouver Harbour	5,367	4,965	245	71	80	0	6
Vancouver International	25,262	22,052	1,422	322	1,059	365	42
Victoria International	8,067	3,004	2,489	724	1,588	67	195
Whitehorse International	1,300	534	381	17	333	33	2
Windsor	1,899	599	979	78	209	24	10
Winnipeg/James Armstrong Richardson International	11,479	8,727	937	80	430	632	673
Winnipeg/St. Andrews	3,813	587	1,942	850	389	35	10
Yellowknife	4,941	3,860	668	22	178	105	108
Total of NAV CANADA towers (42)	267,017	162,715	33,083	34,560	27,562	5,693	3,404

Table 3-2
Itinerant movements by type of operator — NAV CANADA flight service stations

	Total	Air carrier movements		Other commercial movements	Private movements	Government movements	
		Levels I to III and foreign	Levels IV to VI			Civil	Military
	number						
Brandon Municipal	1,348	119	318	45	491	39	336
Campbell River	1,792	663	253	241	542	34	59
Castlegar	863	319	78	389	59	8	10
Charlottetown	1,241	835	27	244	93	22	20
Churchill	763	668	75	0	12	8	0
Cranbrook	891	504	64	128	168	17	10
Dawson Creek	456	254	68	26	100	8	0
Deer Lake	1,451	718	636	7	27	53	10
Fort McMurray	4,092	2,593	654	363	428	40	14
Fort Nelson	1,244	341	307	412	176	6	2
Fort St John	1,781	773	618	125	245	20	0
Fredericton International	1,479	967	177	10	109	96	120
Grande Prairie	2,335	1,300	459	24	498	44	10
High Level	827	477	269	0	51	6	24
Îles-de-la-Madeleine	408	230	130	0	0	44	4
Inuvik/Mike Zubko	1,052	295	675	0	8	28	46
Iqaluit	1,321	1,111	59	42	65	36	8
Kamloops	2,061	834	250	459	396	94	28
Kenora	995	433	297	95	49	48	73
Kingston	1,511	536	311	332	301	17	14
Kuujuaq	751	695	24	0	6	24	2
Kuujuarapik	519	511	4	0	4	0	0
La Grande Rivière	690	532	132	0	23	3	0
La Ronge	1,758	1,316	55	12	69	222	84
Lethbridge	1,544	530	36	497	451	16	14
Lloydminster	704	166	257	18	215	32	16
Medicine Hat	1,028	639	50	61	223	27	28
Mont-Joli	310	250	4	22	19	10	5
Nanaimo	2,137	458	539	211	813	40	76
Norman Wells	1,287	657	249	2	18	8	353
North Bay	2,115	551	538	548	373	72	33
Ottawa/Gatineau	1,011	110	242	123	461	61	14
Peace River	955	478	300	51	108	18	0
Penticton	1,519	300	625	150	327	16	101
Port Hardy	863	576	79	23	117	48	20
Prince Albert	1,547	1,052	95	14	121	189	76
Prince Rupert	340	186	110	0	20	24	0
Rankin Inlet	1,077	1,013	52	0	6	6	0
Red Deer Regional	2,055	320	980	200	517	28	10
Rouyn-Noranda	1,049	524	144	90	255	36	0
Saint John	1,512	883	110	134	355	18	12
Sept-Îles	1,921	1,160	516	66	72	84	23
Sioux Lookout	2,527	1,664	783	28	31	19	2
Smithers	598	377	76	14	120	11	0
St Anthony	462	93	211	50	8	97	3
St Catharines	1,224	13	600	62	391	12	146
Terrace	1,280	677	544	1	42	16	0
Thompson	2,557	1,778	550	36	40	153	0
Timmins	1,760	1,479	104	27	110	34	6
Val-D'or	1,046	641	114	58	187	34	12
Victoria Harbour	3,744	3,295	50	0	317	64	18
Wabush	625	336	241	0	28	20	0
Whitecourt	943	52	595	207	79	4	6
Williams Lake	733	375	96	35	184	35	8
Total of all flight service stations (54)	72,102	37,657	14,830	5,682	9,928	2,149	1,856

Table 4-1

**Itinerant movements by I.F.R. (Instrument flight rules) and V.F.R. (Visual flight rules) and runway 88 movements
— NAV CANADA towers**

	Itinerant movements				Runway 88 flights	
	Total of IFR and VFR flights ¹	IFR	IFR flights, as percentage of total flights	VFR		VFR flights, as percentage of total flights
	number		percent	number		percent
Abbotsford	7,007	1,881	26.8	5,126	73.1	1,809
Boundary Bay	7,804	470	6.0	7,334	93.9	598
Calgary International	19,055	17,707	92.9	1,348	7.0	539
Calgary/Springbank	4,872	209	4.2	4,663	95.7	2,549
Chicoutimi/St-Honoré	2,494	138	5.5	2,356	94.4	38
Edmonton City Centre	5,360	2,580	48.1	2,780	51.8	2,718
Edmonton International	10,105	9,489	93.9	616	6.0	1,169
Edmonton/Villeneuve	1,501	25	1.6	1,476	98.3	102
Gander International	1,944	1,262	64.9	682	35.0	59
Halifax/Robert L Stanfield International	6,405	5,652	88.2	753	11.7	538
Hamilton	3,287	2,253	68.5	1,034	31.4	797
Kelowna	4,810	2,724	56.6	2,086	43.3	911
Kitchener/Waterloo	3,108	731	23.5	2,377	76.4	419
Langley	3,155	47	1.4	3,108	98.5	3,379
London	3,991	1,506	37.7	2,485	62.2	406
Moncton/Greater Moncton International	5,852	2,139	36.5	3,713	63.4	54
Montréal/Mirabel International	1,635	993	60.7	642	39.2	570
Montréal/Pierre Elliott Trudeau International	17,875	17,093	95.6	782	4.3	2,185
Montréal/St-Hubert	5,267	1,323	25.1	3,944	74.8	1,136
Oshawa	2,226	120	5.3	2,106	94.6	551
Ottawa/Macdonald-Cartier International	9,020	7,266	80.5	1,754	19.4	544
Pitt Meadows	2,629	10	0.3	2,619	99.6	1,794
Prince George	2,351	1,347	57.2	1,004	42.7	337
Québec/Jean Lesage International	7,348	4,337	59.0	3,011	40.9	434
Regina International	3,523	2,336	66.3	1,187	33.6	91
Saskatoon/John G Diefenbaker International	4,910	3,092	62.9	1,818	37.0	80
Sault Ste. Marie	2,343	1,034	44.1	1,309	55.8	164
St. John's International	2,817	2,642	93.7	175	6.2	37
St-Jean	1,160	284	24.4	876	75.5	158
Sudbury	2,561	1,747	68.2	814	31.7	171
Thunder Bay	5,175	3,136	60.5	2,039	39.4	291
Toronto/Buttonville Municipal	5,709	954	16.7	4,755	83.2	518
Toronto/City Centre	3,363	1,222	36.3	2,141	63.6	2,420
Toronto/Lester B Pearson International	34,227	34,119	99.6	108	0.3	98
Vancouver Harbour	5,367	50	0.9	5,317	99.0	2,576
Vancouver International	25,262	19,243	76.1	6,019	23.8	11,187
Victoria International	8,067	3,286	40.7	4,781	59.2	8,182
Whitehorse International	1,300	407	31.3	893	68.6	263
Windsor	1,899	779	41.0	1,120	58.9	75
Winnipeg/James Armstrong Richardson International	11,479	9,172	79.9	2,307	20.0	962
Winnipeg/St. Andrews	3,813	62	1.6	3,751	98.3	212
Yellowknife	4,941	2,260	45.7	2,681	54.2	1,132
Total of NAV CANADA towers (42)	267,017	167,127	62.6	99,890	37.4	52,253

1. Total excludes runway 88 flights.

Table 4-2

Itinerant movements by I.F.R. (Instrument flight rules) and V.F.R. (Visual flight rules) and runway 88 movements — NAV CANADA flight service stations

	Itinerant movements				Runway 88 flights number	
	Total of IFR and VFR flights ¹	IFR	IFR flights, as percentage of total flights	VFR		VFR flights, as percentage of total flights
	number		percent	number		percent
Brandon Municipal	1,348	174	12.9	1,174	87.0	27
Campbell River	1,792	499	27.8	1,293	72.1	285
Castlegar	863	349	40.4	514	59.5	128
Charlottetown	1,241	658	53.0	583	46.9	13
Churchill	763	624	81.7	139	18.2	98
Cranbrook	891	552	61.9	339	38.0	169
Dawson Creek	456	216	47.3	240	52.6	34
Deer Lake	1,451	1,236	85.1	215	14.8	14
Fort McMurray	4,092	1,899	46.4	2,193	53.5	18
Fort Nelson	1,244	368	29.5	876	70.4	104
Fort St John	1,781	734	41.2	1,047	58.7	71
Fredericton International	1,479	808	54.6	671	45.3	46
Grande Prairie	2,335	1,460	62.5	875	37.4	56
High Level	827	308	37.2	519	62.7	278
Îles-de-la-Madeleine	408	254	62.2	154	37.7	123
Inuvik/Mike Zubko	1,052	265	25.1	787	74.8	0
Iqaluit	1,321	966	73.1	355	26.8	6
Kamloops	2,061	1,002	48.6	1,059	51.3	234
Kenora	995	318	31.9	677	68.0	114
Kingston	1,511	652	43.1	859	56.8	86
Kuujuuaq	751	343	45.6	408	54.3	4
Kuujuuarapik	519	249	47.9	270	52.0	0
La Grande Rivière	690	475	68.8	215	31.1	178
La Ronge	1,758	668	37.9	1,090	62.0	246
Lethbridge	1,544	642	41.5	902	58.4	35
Lloydminster	704	233	33.0	471	66.9	41
Medicine Hat	1,028	421	40.9	607	59.0	236
Mont-Joli	310	243	78.3	67	21.6	12
Nanaimo	2,137	551	25.7	1,586	74.2	1,717
Norman Wells	1,287	202	15.6	1,085	84.3	196
North Bay	2,115	764	36.1	1,351	63.8	302
Ottawa/Gatineau	1,011	162	16.0	849	83.9	54
Peace River	955	414	43.3	541	56.6	138
Penticton	1,519	314	20.6	1,205	79.3	128
Port Hardy	863	238	27.5	625	72.4	332
Prince Albert	1,547	1,093	70.6	454	29.3	50
Prince Rupert	340	195	57.3	145	42.6	16
Rankin Inlet	1,077	801	74.3	276	25.6	1
Red Deer Regional	2,055	471	22.9	1,584	77.0	252
Rouyn-Noranda	1,049	713	67.9	336	32.0	20
Saint John	1,512	940	62.1	572	37.8	33
Sept-Îles	1,921	1,258	65.4	663	34.5	142
Sioux Lookout	2,527	1,337	52.9	1,190	47.0	131
Smithers	598	363	60.7	235	39.2	139
St Anthony	462	227	49.1	235	50.8	1
St Catharines	1,224	85	6.9	1,139	93.0	389
Terrace	1,280	679	53.0	601	46.9	217
Thompson	2,557	1,103	43.1	1,454	56.8	18
Timmins	1,760	1,441	81.8	319	18.1	88
Val-D'or	1,046	649	62.0	397	37.9	153
Victoria Harbour	3,744	62	1.6	3,682	98.3	376
Wabush	625	569	91.0	56	8.9	81
Whitecourt	943	87	9.2	856	90.7	37
Williams Lake	733	435	59.3	298	40.6	197
Total of all flight service stations (54)	72,102	31,769	44.1	40,333	55.9	7,864

1. Total excludes runway 88 flights.

Table 5-1
Itinerant movements by type of power plant — NAV CANADA towers

	Total	Jet engines	Turbo-propellers	Piston engines	Helicopters	Gliders
	number					
Abbotsford	7,007	638	688	4,352	1,329	0
Boundary Bay	7,804	6	47	7,333	418	0
Calgary International	19,055	12,864	4,854	1,036	299	2
Calgary/Springbank	4,872	9	158	3,734	971	0
Chicoutimi/St-Honoré	2,494	12	40	2,213	226	3
Edmonton City Centre	5,360	435	1,925	2,232	768	0
Edmonton International	10,105	6,148	3,230	681	46	0
Edmonton/Villeneuve	1,501	11	15	1,047	351	77
Gander International	1,944	558	679	421	286	0
Halifax/Robert L Stanfield International	6,405	3,648	1,776	608	373	0
Hamilton	3,287	1,360	826	1,036	64	1
Kelowna	4,810	1,571	1,140	1,546	553	0
Kitchener/Waterloo	3,108	166	323	2,406	212	1
Langley	3,155	2	102	2,434	617	0
London	3,991	282	1,380	2,188	141	0
Moncton/Greater Moncton International	5,852	1,111	665	3,981	95	0
Montréal/Mirabel International	1,635	706	398	480	51	0
Montréal/Pierre Elliott Trudeau International	17,875	12,053	5,045	566	211	0
Montréal/St-Hubert	5,267	157	834	3,795	481	0
Oshawa	2,226	2	93	2,030	101	0
Ottawa/Macdonald-Cartier International	9,020	5,207	2,018	1,553	242	0
Pitt Meadows	2,629	0	30	2,401	197	1
Prince George	2,351	553	869	414	515	0
Québec/Jean Lesage International	7,348	1,318	2,927	2,282	803	18
Regina International	3,523	1,380	708	1,392	43	0
Saskatoon/John G Diefenbaker International	4,910	1,415	1,574	1,900	21	0
Sault Ste. Marie	2,343	15	1,053	1,225	50	0
St. John's International	2,817	1,042	1,425	41	309	0
St-Jean	1,160	0	103	895	30	132
Sudbury	2,561	39	1,752	392	378	0
Thunder Bay	5,175	810	2,560	1,415	390	0
Toronto/Buttonville Municipal	5,709	130	576	4,585	418	0
Toronto/City Centre	3,363	0	1,179	1,822	362	0
Toronto/Lester B Pearson International	34,227	28,201	5,967	45	14	0
Vancouver Harbour	5,367	0	2,767	1,731	869	0
Vancouver International	25,262	11,696	9,030	3,388	1,148	0
Victoria International	8,067	1,071	2,295	4,224	477	0
Whitehorse International	1,300	212	366	502	220	0
Windsor	1,899	139	601	1,145	14	0
Winnipeg/James Armstrong Richardson International	11,479	5,147	4,348	1,795	188	1
Winnipeg/St. Andrews	3,813	0	240	3,372	201	0
Yellowknife	4,941	801	2,982	535	623	0
Total of NAV CANADA towers (42)	267,017	100,915	69,588	81,173	15,105	236

Table 5-2
Itinerant movements by type of power plant — NAV CANADA flight service stations

	Total	Jet engines	Turbo-propellers	Piston engines	Helicopters	Gliders
	number					
Brandon Municipal	1,348	22	236	829	35	226
Campbell River	1,792	83	760	619	330	0
Castlegar	863	12	333	434	84	0
Charlottetown	1,241	211	316	673	41	0
Churchill	763	2	672	14	75	0
Cranbrook	891	46	497	318	30	0
Dawson Creek	456	6	263	110	77	0
Deer Lake	1,451	206	1,057	48	140	0
Fort McMurray	4,092	825	1,386	1,131	749	1
Fort Nelson	1,244	26	342	337	539	0
Fort St John	1,781	252	585	265	679	0
Fredericton International	1,479	285	461	599	134	0
Grande Prairie	2,335	216	1,155	587	376	1
High Level	827	6	392	150	279	0
Îles-de-la-Madeleine	408	8	244	138	18	0
Inuvik/Mike Zubko	1,052	125	593	100	234	0
Iqaluit	1,321	384	875	5	57	0
Kamloops	2,061	36	897	816	312	0
Kenora	995	8	451	251	285	0
Kingston	1,511	15	601	827	68	0
Kuujuuaq	751	136	587	8	20	0
Kuujuuarapik	519	0	515	4	0	0
La Grande Rivière	690	4	663	17	6	0
La Ronge	1,758	3	1,268	418	68	1
Lethbridge	1,544	57	574	875	38	0
Lloydminster	704	4	216	441	43	0
Medicine Hat	1,028	22	432	475	99	0
Mont-Joli	310	9	244	46	11	0
Nanaimo	2,137	10	508	1,500	102	17
Norman Wells	1,287	164	422	288	413	0
North Bay	2,115	64	788	648	580	35
Ottawa/Gatineau	1,011	13	143	789	66	0
Peace River	955	26	391	195	343	0
Penticton	1,519	24	331	588	576	0
Port Hardy	863	19	491	229	124	0
Prince Albert	1,547	8	1,124	365	50	0
Prince Rupert	340	18	190	12	120	0
Rankin Inlet	1,077	148	875	2	52	0
Red Deer Regional	2,055	33	550	1,169	303	0
Rouyn-Noranda	1,049	91	678	260	20	0
Saint John	1,512	346	522	580	64	0
Sept-Îles	1,921	44	1,167	431	279	0
Sioux Lookout	2,527	1	2,239	264	23	0
Smithers	598	16	407	81	94	0
St Anthony	462	2	331	26	103	0
St Catharines	1,224	21	16	894	287	6
Terrace	1,280	22	680	28	550	0
Thompson	2,557	33	1,970	360	194	0
Timmins	1,760	4	1,486	240	30	0
Val-D'or	1,046	97	580	233	136	0
Victoria Harbour	3,744	0	2,567	362	815	0
Wabush	625	12	566	28	19	0
Whitecourt	943	9	95	133	706	0
Williams Lake	733	12	418	237	66	0
Total of all flight service stations (54)	72,102	4,246	36,150	20,477	10,942	287

Table 6-1
Itinerant movements by aircraft weight group — NAV CANADA towers

	Gross take-off weight in kilograms									
	2 000 and under	2 001 to 4 000	4 001 to 5 670	5 671 to 9 000	9 001 to 18 000	18 001 to 35 000	35 001 to 70 000	70 001 to 90 000	90 001 to 136 000	136 001 and over
	number									
Abbotsford	4,881	503	326	208	122	474	469	22	0	2
Boundary Bay	7,418	307	60	16	1	1	1	0	0	0
Calgary International	890	574	1,568	2,227	794	3,906	6,804	1,251	517	524
Calgary/Springbank	4,577	128	152	15	0	0	0	0	0	0
Chicoutimi/St-Honoré	2,099	345	38	4	0	8	0	0	0	0
Edmonton City Centre	2,462	474	1,554	650	191	25	0	4	0	0
Edmonton International	429	304	589	889	399	2,593	3,842	663	226	171
Edmonton/Villeneuve	1,353	57	84	6	0	1	0	0	0	0
Gander International	481	47	125	390	435	231	61	78	38	58
Halifax/Robert L. Stanfield International	400	264	461	792	909	1,226	1,670	298	203	182
Hamilton	875	375	327	327	229	197	394	18	535	10
Kelowna	1,935	152	212	655	276	714	845	2	18	1
Kitchener/Waterloo	2,394	231	139	88	236	10	6	4	0	0
Langley	2,884	181	59	0	24	1	6	0	0	0
London	2,443	167	221	57	757	262	84	0	0	0
Moncton/Greater Moncton International	3,921	207	274	243	144	618	196	7	232	10
Montréal/Mirabel International	397	172	111	183	54	188	120	11	268	131
Montréal/Pierre Elliott Trudeau International	564	216	501	1,071	2,968	5,602	4,011	1,196	8	1,738
Montréal/St-Hubert	3,543	651	746	122	138	29	6	5	27	0
Oshawa	1,976	143	62	0	43	2	0	0	0	0
Ottawa/Macdonald-Cartier International	1,574	128	804	286	640	2,800	1,772	665	191	160
Pitt Meadows	2,507	89	27	2	0	4	0	0	0	0
Prince George	805	126	267	598	9	383	163	0	0	0
Québec/Jean Lesage International	2,476	589	857	161	1,274	1,696	145	17	14	119
Regina International	1,076	381	360	298	112	524	695	0	77	0
Saskatoon/John G. Diefenbaker International	1,496	455	644	580	262	604	824	3	40	2
Sault Ste. Marie	1,212	121	537	56	182	220	0	15	0	0
St. John's International	29	14	354	628	691	102	728	155	80	36
St-Jean	918	158	75	7	0	0	2	0	0	0
Sudbury	419	412	1,166	107	149	292	12	4	0	0
Thunder Bay	1,478	200	2,274	178	187	655	201	2	0	0
Toronto/Buttonville Municipal	4,582	447	457	127	45	35	16	0	0	0
Toronto/City Centre	1,732	220	503	35	18	853	0	2	0	0
Toronto/Lester B. Pearson International	17	281	323	2,561	3,919	7,950	11,097	3,745	377	3,957
Vancouver Harbour	92	3,745	1,410	2	118	0	0	0	0	0
Vancouver International	1,067	4,092	1,098	2,812	3,118	3,505	5,638	1,397	414	2,121
Victoria International	3,800	945	221	436	1,352	740	429	100	44	0
Whitehorse International	640	146	165	59	3	87	200	0	0	0
Windsor	1,095	111	82	126	364	78	6	4	2	31
Winnipeg/James Armstrong Richardson International	1,093	615	3,229	357	982	1,587	2,560	343	686	27
Winnipeg/St. Andrews	3,055	559	185	6	8	0	0	0	0	0
Yellowknife	638	675	1,090	275	213	1,161	649	233	7	0
Total of NAV CANADA towers (42)	77,723	20,007	23,737	17,640	21,366	39,364	43,652	10,244	4,004	9,280

Table 6-2
Itinerant movements by aircraft weight group — NAV CANADA flight service stations

	Gross take-off weight in kilograms									
	2 000 and under	2 001 to 4 000	4 001 to 5 670	5 671 to 9 000	9 001 to 18 000	18 001 to 35 000	35 001 to 70 000	70 001 to 90 000	90 001 to 136 000	136 001 and over
	number									
Brandon Municipal	1,027	46	184	44	16	2	0	29	0	0
Campbell River	827	90	93	455	240	75	8	4	0	0
Castlegar	503	12	36	92	36	184	0	0	0	0
Charlottetown	544	198	30	8	229	178	54	0	0	0
Churchill	81	37	139	65	276	165	0	0	0	0
Cranbrook	284	72	73	286	57	119	0	0	0	0
Dawson Creek	168	21	53	114	99	1	0	0	0	0
Deer Lake	138	38	156	50	866	115	86	0	2	0
Fort McMurray	1,573	385	508	599	263	459	301	4	0	0
Fort Nelson	763	125	102	163	87	0	4	0	0	0
Fort St John	883	61	201	317	99	220	0	0	0	0
Fredericton International	503	131	197	111	81	424	30	2	0	0
Grande Prairie	693	281	521	325	10	378	123	4	0	0
High Level	391	48	178	208	2	0	0	0	0	0
Îles-de-la-Madeleine	4	143	93	0	69	99	0	0	0	0
Inuvik/Mike Zubko	232	21	627	4	2	35	121	10	0	0
Iqaluit	25	2	508	63	59	371	192	19	82	0
Kamloops	891	234	136	275	56	462	2	5	0	0
Kenora	284	52	608	6	26	17	0	2	0	0
Kingston	826	50	95	468	65	5	0	2	0	0
Kuujuuaq	20	8	447	0	92	70	86	2	26	0
Kuujuuarapik	4	2	245	0	182	86	0	0	0	0
La Grande Rivière	21	42	65	12	136	412	2	0	0	0
La Ronge	166	346	602	95	261	288	0	0	0	0
Lethbridge	757	160	176	441	8	2	0	0	0	0
Lloydminster	426	52	104	120	2	0	0	0	0	0
Medicine Hat	501	63	222	222	14	6	0	0	0	0
Mont-Joli	32	20	113	8	131	6	0	0	0	0
Nanaimo	1,249	339	74	107	165	201	2	0	0	0
Norman Wells	326	140	591	20	4	42	154	4	6	0
North Bay	1,191	184	348	93	188	106	2	3	0	0
Ottawa/Gatineau	742	108	140	9	6	0	0	6	0	0
Peace River	371	116	269	176	23	0	0	0	0	0
Penticton	1,058	76	82	133	35	135	0	0	0	0
Port Hardy	143	170	285	87	160	8	10	0	0	0
Prince Albert	191	133	244	304	345	330	0	0	0	0
Prince Rupert	19	101	20	20	60	120	0	0	0	0
Rankin Inlet	54	61	166	247	286	115	142	6	0	0
Red Deer Regional	1,280	90	367	143	0	80	93	2	0	0
Rouyn-Noranda	274	9	289	10	268	146	53	0	0	0
Saint John	409	243	108	291	173	247	41	0	0	0
Sept-Îles	365	289	426	176	553	110	0	0	0	2
Sioux Lookout	143	225	1,761	388	0	10	0	0	0	0
Smithers	158	21	94	210	5	110	0	0	0	0
St Anthony	6	144	211	5	96	0	0	0	0	0
St Catharines	1,010	171	22	16	2	3	0	0	0	0
Terrace	503	22	98	225	257	175	0	0	0	0
Thompson	256	542	1,255	23	339	142	0	0	0	0
Timmins	147	260	707	101	342	199	0	4	0	0
Val-D'or	316	18	280	18	269	84	0	0	61	0
Victoria Harbour	129	2,091	1,409	2	113	0	0	0	0	0
Wabush	21	32	63	62	398	49	0	0	0	0
Whitecourt	762	79	80	19	0	1	2	0	0	0
Williams Lake	214	87	53	370	5	2	2	0	0	0
Total of all flight service stations (54)	23,904	8,491	15,954	7,806	7,556	6,594	1,510	108	177	2

Table 7-1
Itinerant movements, domestic, transborder and international — NAV CANADA towers

	Total	Air carrier movements		Other commercial movements	Private movements	Government movements	
		Levels I to III and foreign	Levels IV to VI			Civil	Military
number							
Abbotsford							
Domestic	6,935	827	2,994	1,708	1,082	261	63
Transborder	72	6	20	2	44	0	0
Other international	0	0	0	0	0	0	0
Total	7,007	833	3,014	1,710	1,126	261	63
Boundary Bay							
Domestic	7,760	24	1,361	4,852	1,447	72	4
Transborder	44	0	2	16	26	0	0
Other international	0	0	0	0	0	0	0
Total	7,804	24	1,363	4,868	1,473	72	4
Calgary International							
Domestic	15,106	12,493	836	599	972	130	76
Transborder	3,440	3,064	74	28	268	0	6
Other international	509	491	1	0	5	0	12
Total	19,055	16,048	911	627	1,245	130	94
Calgary/Springbank							
Domestic	4,841	33	1,010	2,284	1,462	34	18
Transborder	31	0	5	1	25	0	0
Other international	0	0	0	0	0	0	0
Total	4,872	33	1,015	2,285	1,487	34	18
Chicoutimi/St-Honoré							
Domestic	2,494	24	927	1,316	207	6	14
Transborder	0	0	0	0	0	0	0
Other international	0	0	0	0	0	0	0
Total	2,494	24	927	1,316	207	6	14
Edmonton City Centre							
Domestic	5,315	1,469	774	1,554	1,083	384	51
Transborder	45	13	18	1	13	0	0
Other international	0	0	0	0	0	0	0
Total	5,360	1,482	792	1,555	1,096	384	51
Edmonton International							
Domestic	8,744	7,697	540	156	211	51	89
Transborder	1,186	1,126	16	4	38	0	2
Other international	175	175	0	0	0	0	0
Total	10,105	8,998	556	160	249	51	91
Edmonton/Villeneuve							
Domestic	1,501	0	313	712	464	4	8
Transborder	0	0	0	0	0	0	0
Other international	0	0	0	0	0	0	0
Total	1,501	0	313	712	464	4	8
Gander International							
Domestic	1,371	203	871	0	24	153	120
Transborder	271	76	0	5	126	0	64
Other international	302	92	5	5	134	0	66
Total	1,944	371	876	10	284	153	250
Halifax/Robert L Stanfield International							
Domestic	4,775	3,892	446	33	206	93	105
Transborder	994	820	46	2	93	0	33
Other international	636	491	108	2	12	1	22
Total	6,405	5,203	600	37	311	94	160
Hamilton							
Domestic	2,726	1,346	825	88	305	153	9
Transborder	505	353	11	1	139	0	1
Other international	56	50	0	1	5	0	0
Total	3,287	1,749	836	90	449	153	10

Table 7-1 – continued

Itinerant movements, domestic, transborder and international — NAV CANADA towers

	Total	Air carrier movements		Other commercial movements	Private movements	Government movements	
		Levels I to III and foreign	Levels IV to VI			Civil	Military
number							
Kelowna							
Domestic	4,485	2,189	358	1,228	555	109	46
Transborder	323	248	11	5	58	1	0
Other international	2	2	0	0	0	0	0
Total	4,810	2,439	369	1,233	613	110	46
Kitchener/Waterloo							
Domestic	2,685	50	1,336	643	590	3	63
Transborder	422	238	52	4	128	0	0
Other international	1	1	0	0	0	0	0
Total	3,108	289	1,388	647	718	3	63
Langley							
Domestic	3,148	121	195	1,511	1,294	20	7
Transborder	5	0	0	0	5	0	0
Other international	2	0	0	0	2	0	0
Total	3,155	121	195	1,511	1,301	20	7
London							
Domestic	3,564	915	436	1,256	894	61	2
Transborder	425	272	8	5	139	1	0
Other international	2	1	1	0	0	0	0
Total	3,991	1,188	445	1,261	1,033	62	2
Moncton/Greater Moncton International							
Domestic	5,710	5,262	33	34	133	229	19
Transborder	100	84	1	3	12	0	0
Other international	42	39	1	0	2	0	0
Total	5,852	5,385	35	37	147	229	19
Montréal/Mirabel International							
Domestic	1,450	661	320	51	350	38	30
Transborder	182	177	0	0	5	0	0
Other international	3	3	0	0	0	0	0
Total	1,635	841	320	51	355	38	30
Montréal/Pierre Elliott Trudeau International							
Domestic	10,096	8,149	557	260	892	224	14
Transborder	6,000	5,323	98	53	524	0	2
Other international	1,779	1,694	14	15	50	1	5
Total	17,875	15,166	669	328	1,466	225	21
Montréal/St-Hubert							
Domestic	5,067	2,036	484	1,494	851	104	98
Transborder	196	17	6	8	165	0	0
Other international	4	0	3	0	1	0	0
Total	5,267	2,053	493	1,502	1,017	104	98
Oshawa							
Domestic	2,191	95	93	1,414	585	0	4
Transborder	35	12	1	9	13	0	0
Other international	0	0	0	0	0	0	0
Total	2,226	107	94	1,423	598	0	4
Ottawa/Macdonald-Cartier International							
Domestic	6,715	4,326	331	1,263	269	398	128
Transborder	2,168	2,008	22	12	104	9	13
Other international	137	121	4	1	1	0	10
Total	9,020	6,455	357	1,276	374	407	151
Pitt Meadows							
Domestic	2,621	26	624	1,018	925	21	7
Transborder	8	0	0	0	8	0	0
Other international	0	0	0	0	0	0	0
Total	2,629	26	624	1,018	933	21	7

Table 7-1 – continued

Itinerant movements, domestic, transborder and international — NAV CANADA towers

	Total	Air carrier movements		Other commercial movements	Private movements	Government movements	
		Levels I to III and foreign	Levels IV to VI			Civil	Military
number							
Prince George							
Domestic	2,339	1,207	494	165	369	93	11
Transborder	12	0	0	0	12	0	0
Other international	0	0	0	0	0	0	0
Total	2,351	1,207	494	165	381	93	11
Québec/Jean Lesage International							
Domestic	6,788	3,247	761	1,477	709	447	147
Transborder	400	333	1	14	47	2	3
Other international	160	157	0	0	0	0	3
Total	7,348	3,737	762	1,491	756	449	153
Regina International							
Domestic	3,346	1,824	819	54	264	203	182
Transborder	177	130	3	3	38	0	3
Other international	0	0	0	0	0	0	0
Total	3,523	1,954	822	57	302	203	185
Saskatoon/John G Diefenbaker International							
Domestic	4,802	2,595	838	371	447	306	245
Transborder	107	76	3	2	25	1	0
Other international	1	1	0	0	0	0	0
Total	4,910	2,672	841	373	472	307	245
Sault Ste. Marie							
Domestic	2,330	785	174	1,085	114	136	36
Transborder	13	3	2	0	8	0	0
Other international	0	0	0	0	0	0	0
Total	2,343	788	176	1,085	122	136	36
St. John's International							
Domestic	2,488	1,049	1,191	37	43	129	39
Transborder	127	49	1	4	23	0	50
Other international	202	118	1	13	27	0	43
Total	2,817	1,216	1,193	54	93	129	132
St-Jean							
Domestic	1,157	149	223	192	401	37	155
Transborder	3	0	0	0	3	0	0
Other international	0	0	0	0	0	0	0
Total	1,160	149	223	192	404	37	155
Sudbury							
Domestic	2,539	1,439	556	35	210	248	51
Transborder	22	3	2	0	13	4	0
Other international	0	0	0	0	0	0	0
Total	2,561	1,442	558	35	223	252	51
Thunder Bay							
Domestic	5,006	2,362	1,059	1,042	313	158	72
Transborder	167	125	9	1	30	0	2
Other international	2	1	0	0	1	0	0
Total	5,175	2,488	1,068	1,043	344	158	74
Toronto/Buttonville Municipal							
Domestic	5,381	376	562	2,900	1,480	46	17
Transborder	325	97	47	18	163	0	0
Other international	3	2	0	0	1	0	0
Total	5,709	475	609	2,918	1,644	46	17
Toronto/City Centre							
Domestic	3,215	1,013	677	1,160	268	25	72
Transborder	148	9	28	3	106	0	2
Other international	0	0	0	0	0	0	0
Total	3,363	1,022	705	1,163	374	25	74

Table 7-1 – continued

Itinerant movements, domestic, transborder and international — NAV CANADA towers

	Total	Air carrier movements		Other commercial movements	Private movements	Government movements	
		Levels I to III and foreign	Levels IV to VI			Civil	Military
number							
Toronto/Lester B Pearson International							
Domestic	14,785	13,978	258	69	432	36	12
Transborder	15,593	14,645	103	79	765	0	1
Other international	3,849	3,779	16	15	38	0	1
Total	34,227	32,402	377	163	1,235	36	14
Vancouver Harbour							
Domestic	5,287	4,905	237	71	68	0	6
Transborder	80	60	8	0	12	0	0
Other international	0	0	0	0	0	0	0
Total	5,367	4,965	245	71	80	0	6
Vancouver International							
Domestic	18,759	16,030	1,334	299	701	357	38
Transborder	5,039	4,661	16	16	340	4	2
Other international	1,464	1,361	72	7	18	4	2
Total	25,262	22,052	1,422	322	1,059	365	42
Victoria International							
Domestic	7,270	2,597	2,427	700	1,288	66	192
Transborder	702	404	39	3	256	0	0
Other international	95	3	23	21	44	1	3
Total	8,067	3,004	2,489	724	1,588	67	195
Whitehorse International							
Domestic	1,223	519	381	16	273	33	1
Transborder	77	15	0	1	60	0	1
Other international	0	0	0	0	0	0	0
Total	1,300	534	381	17	333	33	2
Windsor							
Domestic	1,748	533	948	73	161	24	9
Transborder	137	56	27	5	48	0	1
Other international	14	10	4	0	0	0	0
Total	1,899	599	979	78	209	24	10
Winnipeg/James Armstrong Richardson International							
Domestic	10,188	7,579	916	79	361	632	621
Transborder	1,259	1,126	20	1	66	0	46
Other international	32	22	1	0	3	0	6
Total	11,479	8,727	937	80	430	632	673
Winnipeg/St. Andrews							
Domestic	3,810	587	1,942	850	386	35	10
Transborder	3	0	0	0	3	0	0
Other international	0	0	0	0	0	0	0
Total	3,813	587	1,942	850	389	35	10
Yellowknife							
Domestic	4,934	3,855	668	22	176	105	108
Transborder	6	5	0	0	1	0	0
Other international	1	0	0	0	1	0	0
Total	4,941	3,860	668	22	178	105	108
Total of NAV CANADA towers (42)							
Domestic	216,695	118,467	32,129	34,171	23,265	5,664	2,999
Transborder	40,849	35,634	700	309	3,952	22	232
Other international	9,473	8,614	254	80	345	7	173
Total	267,017	162,715	33,083	34,560	27,562	5,693	3,404

Table 7-2
Itinerant movements, domestic, transborder and international — NAV CANADA flight service stations

	Total	Air carrier movements		Other commercial movements	Private movements	Government movements	
		Levels I to III and foreign	Levels IV to VI			Civil	Military
number							
Brandon Municipal							
Domestic	1,341	117	318	45	486	39	336
Transborder	7	2	0	0	5	0	0
Other international	0	0	0	0	0	0	0
Total	1,348	119	318	45	491	39	336
Campbell River							
Domestic	1,742	663	253	239	494	34	59
Transborder	50	0	0	2	48	0	0
Other international	0	0	0	0	0	0	0
Total	1,792	663	253	241	542	34	59
Castlegar							
Domestic	853	319	78	389	49	8	10
Transborder	10	0	0	0	10	0	0
Other international	0	0	0	0	0	0	0
Total	863	319	78	389	59	8	10
Charlottetown							
Domestic	1,234	835	26	243	88	22	20
Transborder	7	0	1	1	5	0	0
Other international	0	0	0	0	0	0	0
Total	1,241	835	27	244	93	22	20
Churchill							
Domestic	762	667	75	0	12	8	0
Transborder	1	1	0	0	0	0	0
Other international	0	0	0	0	0	0	0
Total	763	668	75	0	12	8	0
Cranbrook							
Domestic	880	503	64	128	158	17	10
Transborder	11	1	0	0	10	0	0
Other international	0	0	0	0	0	0	0
Total	891	504	64	128	168	17	10
Dawson Creek							
Domestic	456	254	68	26	100	8	0
Transborder	0	0	0	0	0	0	0
Other international	0	0	0	0	0	0	0
Total	456	254	68	26	100	8	0
Deer Lake							
Domestic	1,445	713	635	7	27	53	10
Transborder	0	0	0	0	0	0	0
Other international	6	5	1	0	0	0	0
Total	1,451	718	636	7	27	53	10
Fort McMurray							
Domestic	4,092	2,593	654	363	428	40	14
Transborder	0	0	0	0	0	0	0
Other international	0	0	0	0	0	0	0
Total	4,092	2,593	654	363	428	40	14
Fort Nelson							
Domestic	1,237	341	307	412	169	6	2
Transborder	7	0	0	0	7	0	0
Other international	0	0	0	0	0	0	0
Total	1,244	341	307	412	176	6	2
Fort St John							
Domestic	1,781	773	618	125	245	20	0
Transborder	0	0	0	0	0	0	0
Other international	0	0	0	0	0	0	0
Total	1,781	773	618	125	245	20	0

Table 7-2 – continued

Itinerant movements, domestic, transborder and international — NAV CANADA flight service stations

	Total	Air carrier movements		Other commercial movements	Private movements	Government movements	
		Levels I to III and foreign	Levels IV to VI			Civil	Military
number							
Fredericton International							
Domestic	1,393	896	176	10	97	96	118
Transborder	74	59	1	0	12	0	2
Other international	12	12	0	0	0	0	0
Total	1,479	967	177	10	109	96	120
Grande Prairie							
Domestic	2,331	1,300	459	23	495	44	10
Transborder	4	0	0	1	3	0	0
Other international	0	0	0	0	0	0	0
Total	2,335	1,300	459	24	498	44	10
High Level							
Domestic	827	477	269	0	51	6	24
Transborder	0	0	0	0	0	0	0
Other international	0	0	0	0	0	0	0
Total	827	477	269	0	51	6	24
Îles-de-la-Madeleine							
Domestic	408	230	130	0	0	44	4
Transborder	0	0	0	0	0	0	0
Other international	0	0	0	0	0	0	0
Total	408	230	130	0	0	44	4
Inuvik/Mike Zubko							
Domestic	1,049	295	675	0	5	28	46
Transborder	2	0	0	0	2	0	0
Other international	1	0	0	0	1	0	0
Total	1,052	295	675	0	8	28	46
Iqaluit							
Domestic	1,190	1,051	43	31	23	36	6
Transborder	68	37	15	2	14	0	0
Other international	63	23	1	9	28	0	2
Total	1,321	1,111	59	42	65	36	8
Kamloops							
Domestic	2,029	816	250	458	383	94	28
Transborder	32	18	0	1	13	0	0
Other international	0	0	0	0	0	0	0
Total	2,061	834	250	459	396	94	28
Kenora							
Domestic	995	433	297	95	49	48	73
Transborder	0	0	0	0	0	0	0
Other international	0	0	0	0	0	0	0
Total	995	433	297	95	49	48	73
Kingston							
Domestic	1,493	529	311	332	290	17	14
Transborder	18	7	0	0	11	0	0
Other international	0	0	0	0	0	0	0
Total	1,511	536	311	332	301	17	14
Kuujuuaq							
Domestic	748	693	24	0	6	24	1
Transborder	0	0	0	0	0	0	0
Other international	3	2	0	0	0	0	1
Total	751	695	24	0	6	24	2
Kuujuuarapik							
Domestic	519	511	4	0	4	0	0
Transborder	0	0	0	0	0	0	0
Other international	0	0	0	0	0	0	0
Total	519	511	4	0	4	0	0
La Grande Rivière							
Domestic	690	532	132	0	23	3	0
Transborder	0	0	0	0	0	0	0
Other international	0	0	0	0	0	0	0
Total	690	532	132	0	23	3	0

Table 7-2 – continued

Itinerant movements, domestic, transborder and international — NAV CANADA flight service stations

	Total	Air carrier movements		Other commercial movements	Private movements	Government movements	
		Levels I to III and foreign	Levels IV to VI			Civil	Military
number							
La Ronge							
Domestic	1,758	1,316	55	12	69	222	84
Transborder	0	0	0	0	0	0	0
Other international	0	0	0	0	0	0	0
Total	1,758	1,316	55	12	69	222	84
Lethbridge							
Domestic	1,473	524	31	495	393	16	14
Transborder	71	6	5	2	58	0	0
Other international	0	0	0	0	0	0	0
Total	1,544	530	36	497	451	16	14
Lloydminster							
Domestic	703	166	257	18	214	32	16
Transborder	1	0	0	0	1	0	0
Other international	0	0	0	0	0	0	0
Total	704	166	257	18	215	32	16
Medicine Hat							
Domestic	1,020	634	49	61	221	27	28
Transborder	8	5	1	0	2	0	0
Other international	0	0	0	0	0	0	0
Total	1,028	639	50	61	223	27	28
Mont-Joli							
Domestic	309	249	4	22	19	10	5
Transborder	1	1	0	0	0	0	0
Other international	0	0	0	0	0	0	0
Total	310	250	4	22	19	10	5
Nanaimo							
Domestic	2,094	458	534	211	776	40	75
Transborder	43	0	5	0	37	0	1
Other international	0	0	0	0	0	0	0
Total	2,137	458	539	211	813	40	76
Norman Wells							
Domestic	1,287	657	249	2	18	8	353
Transborder	0	0	0	0	0	0	0
Other international	0	0	0	0	0	0	0
Total	1,287	657	249	2	18	8	353
North Bay							
Domestic	2,089	549	537	546	356	68	33
Transborder	25	1	1	2	17	4	0
Other international	1	1	0	0	0	0	0
Total	2,115	551	538	548	373	72	33
Ottawa/Gatineau							
Domestic	1,006	109	240	123	459	61	14
Transborder	5	1	2	0	2	0	0
Other international	0	0	0	0	0	0	0
Total	1,011	110	242	123	461	61	14
Peace River							
Domestic	955	478	300	51	108	18	0
Transborder	0	0	0	0	0	0	0
Other international	0	0	0	0	0	0	0
Total	955	478	300	51	108	18	0
Penticton							
Domestic	1,506	300	625	150	316	14	101
Transborder	13	0	0	0	11	2	0
Other international	0	0	0	0	0	0	0
Total	1,519	300	625	150	327	16	101

Table 7-2 – continued

Itinerant movements, domestic, transborder and international — NAV CANADA flight service stations

	Total	Air carrier movements		Other commercial movements	Private movements	Government movements	
		Levels I to III and foreign	Levels IV to VI			Civil	Military
number							
Port Hardy							
Domestic	838	571	79	23	100	48	17
Transborder	25	5	0	0	17	0	3
Other international	0	0	0	0	0	0	0
Total	863	576	79	23	117	48	20
Prince Albert							
Domestic	1,547	1,052	95	14	121	189	76
Transborder	0	0	0	0	0	0	0
Other international	0	0	0	0	0	0	0
Total	1,547	1,052	95	14	121	189	76
Prince Rupert							
Domestic	336	186	110	0	16	24	0
Transborder	3	0	0	0	3	0	0
Other international	1	0	0	0	1	0	0
Total	340	186	110	0	20	24	0
Rankin Inlet							
Domestic	1,075	1,012	52	0	5	6	0
Transborder	2	1	0	0	1	0	0
Other international	0	0	0	0	0	0	0
Total	1,077	1,013	52	0	6	6	0
Red Deer Regional							
Domestic	2,045	316	978	200	513	28	10
Transborder	10	4	2	0	4	0	0
Other international	0	0	0	0	0	0	0
Total	2,055	320	980	200	517	28	10
Rouyn-Noranda							
Domestic	1,049	524	144	90	255	36	0
Transborder	0	0	0	0	0	0	0
Other international	0	0	0	0	0	0	0
Total	1,049	524	144	90	255	36	0
Saint John							
Domestic	1,401	867	106	130	268	18	12
Transborder	99	6	3	3	87	0	0
Other international	12	10	1	1	0	0	0
Total	1,512	883	110	134	355	18	12
Sept-Îles							
Domestic	1,909	1,158	516	65	63	84	23
Transborder	12	2	0	1	9	0	0
Other international	0	0	0	0	0	0	0
Total	1,921	1,160	516	66	72	84	23
Sioux Lookout							
Domestic	2,527	1,664	783	28	31	19	2
Transborder	0	0	0	0	0	0	0
Other international	0	0	0	0	0	0	0
Total	2,527	1,664	783	28	31	19	2
Smithers							
Domestic	587	377	76	14	109	11	0
Transborder	11	0	0	0	11	0	0
Other international	0	0	0	0	0	0	0
Total	598	377	76	14	120	11	0
St Anthony							
Domestic	461	93	211	50	7	97	3
Transborder	0	0	0	0	0	0	0
Other international	1	0	0	0	1	0	0
Total	462	93	211	50	8	97	3

Table 7-2 – continued

Itinerant movements, domestic, transborder and international — NAV CANADA flight service stations

	Total	Air carrier movements		Other commercial movements	Private movements	Government movements	
		Levels I to III and foreign	Levels IV to VI			Civil	Military
number							
St Catharines							
Domestic	1,174	6	599	61	350	12	146
Transborder	50	7	1	1	41	0	0
Other international	0	0	0	0	0	0	0
Total	1,224	13	600	62	391	12	146
Terrace							
Domestic	1,279	677	544	1	41	16	0
Transborder	1	0	0	0	1	0	0
Other international	0	0	0	0	0	0	0
Total	1,280	677	544	1	42	16	0
Thompson							
Domestic	2,557	1,778	550	36	40	153	0
Transborder	0	0	0	0	0	0	0
Other international	0	0	0	0	0	0	0
Total	2,557	1,778	550	36	40	153	0
Timmins							
Domestic	1,756	1,479	104	27	107	34	5
Transborder	4	0	0	0	3	0	1
Other international	0	0	0	0	0	0	0
Total	1,760	1,479	104	27	110	34	6
Val-D'or							
Domestic	1,045	641	113	58	187	34	12
Transborder	0	0	0	0	0	0	0
Other international	1	0	1	0	0	0	0
Total	1,046	641	114	58	187	34	12
Victoria Harbour							
Domestic	3,439	3,295	50	0	12	64	18
Transborder	305	0	0	0	305	0	0
Other international	0	0	0	0	0	0	0
Total	3,744	3,295	50	0	317	64	18
Wabush							
Domestic	620	335	241	0	24	20	0
Transborder	4	1	0	0	3	0	0
Other international	1	0	0	0	1	0	0
Total	625	336	241	0	28	20	0
Whitecourt							
Domestic	943	52	595	207	79	4	6
Transborder	0	0	0	0	0	0	0
Other international	0	0	0	0	0	0	0
Total	943	52	595	207	79	4	6
Williams Lake							
Domestic	732	375	96	35	183	35	8
Transborder	1	0	0	0	1	0	0
Other international	0	0	0	0	0	0	0
Total	733	375	96	35	184	35	8
Total of all flight service stations (54)							
Domestic	71,015	37,439	14,789	5,656	9,142	2,143	1,846
Transborder	985	165	37	16	754	6	7
Other international	102	53	4	10	32	0	3
Total	72,102	37,657	14,830	5,682	9,928	2,149	1,856

Table 8-1
Total aircraft movements, peak hour and peak day — NAV CANADA towers

	Rank of movements	Number of movements	Peak hour occurrence			Peak day occurrence	
			Day in month	Hour in day	Number of movements	Day in month	Number of movements
Abbotsford	5	18,379	10	11	151	11	1,067
Boundary Bay	3	22,221	23	13	140	3	1,034
Calgary International	4	19,289	28	16	73	26	782
Calgary/Springbank	9	12,831	14	13	126	14	831
Chicoutimi/St-Honoré	24	6,795	18	9	85	27	479
Edmonton City Centre	27	6,507	18	9	52	12	378
Edmonton International	13	10,571	12	15	52	25	481
Edmonton/Villeneuve	31	5,311	23	9	83	23	437
Gander International	40	2,843	20	17	32	20	229
Halifax/Robert L Stanfield International	22	7,356	14	17	48	21	372
Hamilton	33	5,108	14	14	59	20	421
Kelowna	18	9,589	4	15	74	11	470
Kitchener/Waterloo	26	6,581	14	10	84	10	596
Langley	19	8,257	11	9	111	18	481
London	28	6,095	21	11	71	20	414
Moncton/Greater Moncton International	14	10,406	25	13	70	25	724
Montréal/Mirabel International	41	2,063	6	12	32	11	175
Montréal/Pierre Elliott Trudeau International	6	17,875	10	18	73	25	717
Montréal/St-Hubert	10	12,209	25	10	130	26	1,023
Oshawa	29	6,054	14	10	84	21	589
Ottawa/Macdonald-Cartier International	12	11,544	26	17	72	19	644
Pitt Meadows	21	7,537	10	13	104	6	694
Prince George	35	3,907	30	14	99	30	380
Québec/Jean Lesage International	15	10,146	19	16	80	20	607
Regina International	32	5,151	24	16	46	24	322
Saskatoon/John G Diefenbaker International	20	7,896	30	16	53	26	401
Sault Ste. Marie	34	5,065	19	14	66	19	496
St. John's International	39	3,001	13	13	29	20	153
St-Jean	42	1,712	21	12	34	21	231
Sudbury	37	3,617	17	15	43	17	217
Thunder Bay	16	9,780	2	15	85	16	624
Toronto/Buttonville Municipal	11	11,755	20	10	117	24	888
Toronto/City Centre	25	6,727	21	9	76	21	513
Toronto/Lester B Pearson International	1	34,227	23	18	100	5	1,265
Vancouver Harbour	30	5,369	27	17	32	19	247
Vancouver International	2	25,262	12	17	77	20	961
Victoria International	7	14,199	19	14	126	19	770
Whitehorse International	38	3,204	27	16	54	24	265
Windsor	36	3,713	28	14	46	19	269
Winnipeg/James Armstrong Richardson International	8	13,057	11	14	60	18	621
Winnipeg/St. Andrews	17	9,695	5	15	96	14	497
Yellowknife	23	7,165	12	17	54	29	376

Table 8-2
Total aircraft movements, peak hour and peak day — NAV CANADA flight service stations

	Rank of movements	Number of movements	Peak hour occurrence			Peak day occurrence	
			Day in month	Hour in day	Number of movements	Day in month	Number of movements
Brandon Municipal	23	1,982	17	10	38	22	172
Campbell River	13	2,706	30	14	47	30	191
Castlegar	22	1,989	26	16	56	20	189
Charlottetown	26	1,797	13	1	34	22	139
Churchill	45	763	23	10	9	23	42
Cranbrook	39	1,119	6	10	23	6	85
Dawson Creek	50	550	27	21	28	27	53
Deer Lake	29	1,673	3	16	30	4	128
Fort McMurray	1	5,604	12	10	50	12	379
Fort Nelson	34	1,462	14	6	19	19	82
Fort St John	18	2,213	4	10	33	13	143
Fredericton International	28	1,679	28	13	24	12	119
Grande Prairie	8	3,261	3	15	36	17	196
High Level	36	1,351	6	16	38	26	162
Îles-de-la-Madeleine	53	408	1	12	6	2	32
Inuvik/Mike Zubko	40	1,086	13	16	11	24	67
Iqaluit	32	1,479	30	20	18	30	91
Kamloops	3	4,323	4	13	70	19	319
Kenora	38	1,123	22	17	23	17	88
Kingston	14	2,545	14	9	42	14	203
Kuujuuaq	44	805	5	18	12	18	49
Kuujuuarapik	51	519	18	13	9	19	33
La Grande Rivière	46	706	7	10	17	7	44
La Ronge	21	2,064	11	14	48	11	125
Lethbridge	16	2,396	15	14	44	21	154
Lloydminster	37	1,298	18	11	26	8	84
Medicine Hat	25	1,834	14	10	45	14	174
Mont-Joli	54	354	22	11	22	2	29
Nanaimo	7	3,349	29	14	57	28	288
Norman Wells	31	1,555	25	9	40	25	226
North Bay	2	5,149	11	10	80	25	434
Ottawa/Gatineau	15	2,429	14	15	55	21	205
Peace River	35	1,391	1	13	28	1	146
Penticton	9	3,203	12	15	46	4	236
Port Hardy	43	919	18	10	23	18	81
Prince Albert	27	1,683	27	11	20	26	114
Prince Rupert	49	558	27	10	24	24	74
Rankin Inlet	41	1,077	5	13	10	19	57
Red Deer Regional	4	4,275	11	17	50	24	312
Rouyn-Noranda	33	1,477	20	19	29	20	137
Saint John	19	2,196	7	11	39	1	176
Sept-Îles	17	2,305	27	14	38	27	155
Sioux Lookout	12	2,715	9	21	47	9	144
Smithers	48	606	9	15	8	12	40
St Anthony	52	464	11	11	7	13	32
St Catharines	5	3,766	20	16	67	20	411
Terrace	30	1,588	10	15	37	30	94
Thompson	11	2,721	26	10	24	20	146
Timmins	24	1,844	3	18	21	3	103
Val-D'or	20	2,182	18	17	109	18	242
Victoria Harbour	6	3,744	12	17	24	19	178
Wabush	47	625	19	10	7	19	32
Whitecourt	10	3,141	24	9	64	5	282
Williams Lake	42	1,015	21	9	58	21	74

Table 9-1
Itinerant aircraft movements, peak hour and peak day — NAV CANADA towers

	Rank of movements	Number of movements	Peak hour occurrence			Peak day occurrence	
			Day in month	Hour in day	Number of movements	Day in month	Number of movements
Abbotsford	11	7,007	11	15	50	3	404
Boundary Bay	9	7,804	6	14	51	3	430
Calgary International	3	19,055	25	18	71	12	772
Calgary/Springbank	21	4,872	14	15	50	14	379
Chicoutimi/St-Honoré	33	2,494	18	12	27	10	181
Edmonton City Centre	16	5,360	25	17	39	12	320
Edmonton International	6	10,105	12	15	40	25	413
Edmonton/Villeneuve	40	1,501	29	10	31	29	206
Gander International	37	1,944	20	13	20	12	131
Halifax/Robert L Stanfield International	12	6,405	7	11	26	20	273
Hamilton	27	3,287	11	13	19	24	193
Kelowna	22	4,810	6	11	29	3	210
Kitchener/Waterloo	29	3,108	21	14	39	24	251
Langley	28	3,155	14	13	32	6	187
London	23	3,991	21	10	29	20	260
Moncton/Greater Moncton International	13	5,852	23	14	30	12	387
Montréal/Mirabel International	39	1,635	11	15	25	11	115
Montréal/Pierre Elliott Trudeau International	4	17,875	10	18	73	25	717
Montréal/St-Hubert	17	5,267	20	13	41	20	374
Oshawa	36	2,226	29	11	27	21	207
Ottawa/Macdonald-Cartier International	7	9,020	26	17	38	19	406
Pitt Meadows	31	2,629	14	11	36	6	280
Prince George	34	2,351	27	11	18	27	126
Québec/Jean Lesage International	10	7,348	21	10	51	20	427
Regina International	25	3,523	13	16	18	24	184
Saskatoon/John G Diefenbaker International	20	4,910	5	14	24	26	237
Sault Ste. Marie	35	2,343	14	13	16	19	154
St. John's International	30	2,817	25	16	14	20	125
St-Jean	42	1,160	21	12	30	21	221
Sudbury	32	2,561	24	13	19	20	138
Thunder Bay	18	5,175	16	15	34	9	257
Toronto/Buttonville Municipal	14	5,709	29	13	48	20	464
Toronto/City Centre	26	3,363	14	12	26	24	217
Toronto/Lester B Pearson International	1	34,227	23	18	100	5	1,265
Vancouver Harbour	15	5,367	27	17	32	19	247
Vancouver International	2	25,262	12	17	77	20	961
Victoria International	8	8,067	28	14	36	19	370
Whitehorse International	41	1,300	27	16	12	24	67
Windsor	38	1,899	21	10	15	21	127
Winnipeg/James Armstrong Richardson International	5	11,479	10	14	42	18	517
Winnipeg/St. Andrews	24	3,813	9	13	28	17	185
Yellowknife	19	4,941	27	17	26	27	237

Table 9-2
Itinerant aircraft movements, peak hour and peak day — NAV CANADA flight service stations

	Rank of movements	Number of movements	Peak hour occurrence			Peak day occurrence	
			Day in month	Hour in day	Number of movements	Day in month	Number of movements
Brandon Municipal	22	1,348	29	10	28	22	172
Campbell River	11	1,792	19	17	27	19	112
Castlegar	39	863	24	9	12	24	55
Charlottetown	27	1,241	22	9	14	12	89
Churchill	42	763	23	10	9	23	42
Cranbrook	38	891	16	16	16	16	59
Dawson Creek	51	456	5	10	9	5	34
Deer Lake	21	1,451	25	8	12	5	77
Fort McMurray	1	4,092	12	14	23	12	231
Fort Nelson	26	1,244	5	9	10	25	70
Fort St John	12	1,781	26	10	16	3	89
Fredericton International	20	1,479	23	9	14	12	97
Grande Prairie	5	2,335	25	17	19	25	119
High Level	41	827	20	13	10	26	52
Îles-de-la-Madeleine	52	408	1	12	6	2	32
Inuvik/Mike Zubko	30	1,052	24	10	11	24	67
Iqaluit	23	1,321	12	13	10	23	65
Kamloops	8	2,061	18	15	15	4	97
Kenora	35	995	17	15	10	17	56
Kingston	19	1,511	22	10	30	22	134
Kuujuaq	43	751	5	18	12	5	42
Kuujuarapik	49	519	18	13	9	19	33
La Grande Rivière	46	690	2	10	10	27	33
La Ronge	14	1,758	28	14	18	16	102
Lethbridge	16	1,544	24	12	16	30	96
Lloydminster	45	704	12	17	8	12	47
Medicine Hat	33	1,028	14	10	17	14	72
Mont-Joli	54	310	30	19	5	20	18
Nanaimo	6	2,137	20	14	23	3	138
Norman Wells	24	1,287	19	17	22	25	94
North Bay	7	2,115	9	16	19	10	139
Ottawa/Gatineau	34	1,011	22	12	20	21	87
Peace River	36	955	11	16	9	26	66
Penticton	17	1,519	23	11	17	23	94
Port Hardy	40	863	12	16	9	12	51
Prince Albert	15	1,547	26	14	17	26	102
Prince Rupert	53	340	18	18	6	19	33
Rankin Inlet	29	1,077	5	13	10	19	57
Red Deer Regional	9	2,055	12	12	21	23	148
Rouyn-Noranda	31	1,049	3	14	16	20	71
Saint John	18	1,512	12	10	11	20	83
Sept-Îles	10	1,921	10	11	14	18	93
Sioux Lookout	4	2,527	17	11	19	18	122
Smithers	48	598	12	10	7	12	40
St Anthony	50	462	11	11	7	13	32
St Catharines	28	1,224	20	16	19	20	127
Terrace	25	1,280	26	10	13	18	64
Thompson	3	2,557	26	11	16	17	124
Timmins	13	1,760	22	20	12	24	87
Val-D'or	32	1,046	28	15	10	20	75
Victoria Harbour	2	3,744	12	17	24	19	178
Wabush	47	625	19	10	7	19	32
Whitecourt	37	943	25	12	11	11	66
Williams Lake	44	733	15	15	9	4	38

Table 10-1
Local movements, peak hour and peak day — NAV CANADA towers

	Rank of movements	Number of movements	Peak hour occurrence			Peak day occurrence	
			Day in month	Hour in day	Number of movements	Day in month	Number of movements
Abbotsford	2	11,372	10	11	114	11	666
Boundary Bay	1	14,417	18	12	96	4	758
Calgary International	37	234	29	12	26	29	72
Calgary/Springbank	3	7,959	14	13	88	16	532
Chicoutimi/St-Honoré	13	4,301	15	13	66	17	338
Edmonton City Centre	30	1,147	18	9	40	18	116
Edmonton International	35	466	23	12	14	25	68
Edmonton/Villeneuve	15	3,810	24	13	72	23	338
Gander International	33	899	20	14	24	20	110
Halifax/Robert L Stanfield International	32	951	14	17	32	21	112
Hamilton	25	1,821	14	14	48	20	236
Kelowna	10	4,779	4	14	52	11	284
Kitchener/Waterloo	16	3,473	11	11	70	10	350
Langley	8	5,102	11	9	100	18	340
London	23	2,104	17	21	50	17	190
Moncton/Greater Moncton International	12	4,554	1	22	48	25	364
Montréal/Mirabel International	36	428	6	12	29	25	67
Montréal/Pierre Elliott Trudeau International	0	0	0	0	0	0	0
Montréal/St-Hubert	4	6,942	3	16	92	26	664
Oshawa	14	3,828	9	11	70	21	382
Ottawa/Macdonald-Cartier International	21	2,524	9	20	38	19	238
Pitt Meadows	9	4,908	10	13	78	6	414
Prince George	29	1,556	30	14	90	30	282
Québec/Jean Lesage International	19	2,798	19	16	46	19	190
Regina International	27	1,628	24	16	28	24	138
Saskatoon/John G Diefenbaker International	18	2,986	5	13	38	24	178
Sault Ste. Marie	20	2,722	19	14	54	19	342
St. John's International	38	184	13	13	20	13	38
St-Jean	34	552	7	16	22	25	92
Sudbury	31	1,056	17	15	38	17	110
Thunder Bay	11	4,605	2	13	70	2	406
Toronto/Buttonville Municipal	6	6,046	20	10	82	10	512
Toronto/City Centre	17	3,364	21	9	60	21	314
Toronto/Lester B Pearson International	0	0	0	0	0	0	0
Vancouver Harbour	39	2	3	12	2	3	2
Vancouver International	0	0	0	0	0	0	0
Victoria International	5	6,132	19	14	102	19	400
Whitehorse International	24	1,904	26	10	46	24	198
Windsor	26	1,814	28	14	36	19	168
Winnipeg/James Armstrong Richardson International	28	1,578	21	21	28	11	118
Winnipeg/St. Andrews	7	5,882	5	15	82	12	322
Yellowknife	22	2,224	28	14	42	29	196

Table 10-2
Local movements, peak hour and peak day — NAV CANADA flight service stations

	Rank of movements	Number of movements	Peak hour occurrence			Peak day occurrence	
			Day in month	Hour in day	Number of movements	Day in month	Number of movements
Brandon Municipal	18	634	17	10	28	5	84
Campbell River	14	914	6	12	36	30	122
Castlegar	11	1,126	25	18	54	20	140
Charlottetown	20	556	10	20	26	2	68
Churchill	0	0	0	0	0	0	0
Cranbrook	30	228	6	10	16	6	40
Dawson Creek	40	94	27	21	26	27	34
Deer Lake	31	222	3	12	24	3	60
Fort McMurray	7	1,512	10	15	40	22	154
Fort Nelson	32	218	14	6	18	28	24
Fort St John	23	432	4	10	26	13	72
Fredericton International	34	200	28	13	22	22	34
Grande Prairie	13	926	9	10	26	17	96
High Level	21	524	6	16	34	26	110
Îles-de-la-Madeleine	0	0	0	0	0	0	0
Inuvik/Mike Zubko	45	34	5	12	8	5	12
Iqaluit	37	158	30	20	16	30	32
Kamloops	3	2,262	4	13	62	19	246
Kenora	39	128	22	17	16	17	32
Kingston	12	1,034	14	9	34	14	128
Kuujuaq	43	54	3	21	8	17	16
Kuujuarapik	0	0	0	0	0	0	0
La Grande Rivière	46	16	7	10	14	7	14
La Ronge	27	306	11	14	38	11	48
Lethbridge	15	852	15	14	36	15	88
Lloydminster	19	594	18	11	22	8	64
Medicine Hat	16	806	14	10	28	14	102
Mont-Joli	44	44	22	11	18	22	18
Nanaimo	9	1,212	28	11	40	28	186
Norman Wells	29	268	25	9	34	25	132
North Bay	1	3,034	11	10	74	25	304
Ottawa/Gatineau	8	1,418	14	15	44	14	138
Peace River	22	436	1	13	26	1	118
Penticton	6	1,684	12	15	36	4	176
Port Hardy	42	56	18	10	18	18	52
Prince Albert	38	136	27	11	12	23	18
Prince Rupert	33	218	27	10	22	24	54
Rankin Inlet	0	0	0	0	0	0	0
Red Deer Regional	4	2,220	23	14	38	24	166
Rouyn-Noranda	24	428	15	11	24	15	70
Saint John	17	684	7	11	34	1	118
Sept-Îles	25	384	11	15	26	27	64
Sioux Lookout	35	188	9	21	46	9	50
Smithers	47	8	9	15	6	9	6
St Anthony	48	2	15	10	2	15	2
St Catharines	2	2,542	20	16	48	20	284
Terrace	26	308	22	10	32	28	40
Thompson	36	164	19	15	16	20	38
Timmins	41	84	3	18	16	20	30
Val-D'or	10	1,136	18	17	102	18	192
Victoria Harbour	0	0	0	0	0	0	0
Wabush	0	0	0	0	0	0	0
Whitecourt	5	2,198	24	9	60	5	226
Williams Lake	28	282	21	9	56	21	56

Table 11-1
Local movements - civil, peak hour and peak day — NAV CANADA towers

	Rank of movements	Number of movements	Peak hour occurrence			Peak day occurrence	
			Day in month	Hour in day	Number of movements	Day in month	Number of movements
Abbotsford	2	11,372	10	11	114	11	666
Boundary Bay	1	14,417	18	12	96	4	758
Calgary International	37	234	29	12	26	29	72
Calgary/Springbank	3	7,955	14	13	88	16	532
Chicoutimi/St-Honoré	13	4,291	15	13	66	17	338
Edmonton City Centre	30	1,143	18	9	40	18	116
Edmonton International	35	440	23	12	14	25	56
Edmonton/Villeneuve	15	3,810	24	13	72	23	338
Gander International	33	714	20	17	24	20	96
Halifax/Robert L Stanfield International	32	853	14	17	32	21	104
Hamilton	26	1,801	14	14	48	20	236
Kelowna	10	4,743	4	14	52	11	284
Kitchener/Waterloo	16	3,455	11	11	70	10	332
Langley	8	5,102	11	9	100	18	340
London	22	2,104	17	21	50	17	190
Moncton/Greater Moncton International	12	4,554	1	22	48	25	364
Montréal/Mirabel International	36	422	6	12	29	6	62
Montréal/Pierre Elliott Trudeau International	0	0	0	0	0	0	0
Montréal/St-Hubert	4	6,942	3	16	92	26	664
Oshawa	14	3,828	9	11	70	21	382
Ottawa/Macdonald-Cartier International	21	2,505	9	20	38	19	238
Pitt Meadows	9	4,908	10	13	78	6	414
Prince George	27	1,556	30	14	90	30	282
Québec/Jean Lesage International	19	2,792	19	16	46	19	190
Regina International	28	1,546	24	16	28	24	130
Saskatoon/John G Diefenbaker International	18	2,852	5	13	38	24	170
Sault Ste. Marie	20	2,690	19	14	54	19	316
St. John's International	38	184	13	13	20	13	38
St-Jean	34	552	7	16	22	25	92
Sudbury	31	1,056	17	15	38	17	110
Thunder Bay	11	4,587	2	13	70	2	406
Toronto/Buttonville Municipal	5	6,046	20	10	82	10	512
Toronto/City Centre	17	3,364	21	9	60	21	314
Toronto/Lester B Pearson International	0	0	0	0	0	0	0
Vancouver Harbour	39	2	3	12	2	3	2
Vancouver International	0	0	0	0	0	0	0
Victoria International	7	5,590	19	14	102	28	348
Whitehorse International	24	1,904	26	10	46	24	198
Windsor	25	1,802	28	14	36	19	168
Winnipeg/James Armstrong Richardson International	29	1,156	21	21	28	14	92
Winnipeg/St. Andrews	6	5,882	5	15	82	12	322
Yellowknife	23	2,088	28	14	42	29	196

Table 11-2
Local movements - civil, peak hour and peak day — NAV CANADA flight service stations

	Rank of movements	Number of movements	Peak hour occurrence			Peak day occurrence	
			Day in month	Hour in day	Number of movements	Day in month	Number of movements
Brandon Municipal	19	556	17	10	28	23	74
Campbell River	13	914	6	12	36	30	122
Castlegar	10	1,126	25	18	54	20	140
Charlottetown	21	524	10	20	26	2	68
Churchill	0	0	0	0	0	0	0
Cranbrook	29	228	6	10	16	6	40
Dawson Creek	40	94	27	21	26	27	34
Deer Lake	30	222	3	12	24	3	60
Fort McMurray	7	1,512	10	15	40	22	154
Fort Nelson	31	218	14	6	18	28	24
Fort St John	23	432	4	10	26	13	72
Fredericton International	33	192	28	13	22	22	34
Grande Prairie	12	926	9	10	26	17	96
High Level	20	524	6	16	34	26	110
Îles-de-la-Madeleine	0	0	0	0	0	0	0
Inuvik/Mike Zubko	45	30	5	12	8	5	12
Iqaluit	37	158	30	20	16	30	32
Kamloops	3	2,232	4	13	62	19	246
Kenora	39	128	22	17	16	17	32
Kingston	11	1,034	14	9	34	14	128
Kuujuuaq	43	54	3	21	8	17	16
Kuujuuarapik	0	0	0	0	0	0	0
La Grande Rivière	46	16	7	10	14	7	14
La Ronge	27	306	11	14	38	11	48
Lethbridge	14	852	15	14	36	15	88
Lloydminster	18	594	18	11	22	8	64
Medicine Hat	15	800	14	10	28	14	102
Mont-Joli	44	44	22	11	18	22	18
Nanaimo	16	786	26	9	24	4	76
Norman Wells	36	160	6	15	16	30	32
North Bay	1	3,022	11	10	74	25	304
Ottawa/Gatineau	8	1,418	14	15	44	14	138
Peace River	22	436	1	13	26	1	118
Penticton	6	1,678	12	15	36	4	176
Port Hardy	42	56	18	10	18	18	52
Prince Albert	38	136	27	11	12	23	18
Prince Rupert	32	218	27	10	22	24	54
Rankin Inlet	0	0	0	0	0	0	0
Red Deer Regional	4	2,220	23	14	38	24	166
Rouyn-Noranda	24	428	15	11	24	15	70
Saint John	17	684	7	11	34	1	118
Sept-Îles	25	384	11	15	26	27	64
Sioux Lookout	34	188	9	21	46	9	50
Smithers	47	8	9	15	6	9	6
St Anthony	0	0	0	0	0	0	0
St Catharines	2	2,542	20	16	48	20	284
Terrace	26	308	22	10	32	28	40
Thompson	35	164	19	15	16	20	38
Timmins	41	84	3	18	16	20	30
Val-D'or	9	1,136	18	17	102	18	192
Victoria Harbour	0	0	0	0	0	0	0
Wabush	0	0	0	0	0	0	0
Whitecourt	5	2,198	24	9	60	5	226
Williams Lake	28	280	21	9	56	21	56

Table 12-1
Local movements - military, peak hour and peak day — NAV CANADA towers

	Rank of movements	Number of movements	Peak hour occurrence			Peak day occurrence	
			Day in month	Hour in day	Number of movements	Day in month	Number of movements
Abbotsford	0	0	0	0	0	0	0
Boundary Bay	0	0	0	0	0	0	0
Calgary International	0	0	0	0	0	0	0
Calgary/Springbank	20	4	11	17	2	11	4
Chicoutimi/St-Honoré	16	10	4	14	8	4	10
Edmonton City Centre	19	4	3	13	2	3	4
Edmonton International	10	26	22	16	4	25	12
Edmonton/Villeneuve	0	0	0	0	0	0	0
Gander International	3	185	16	9	22	16	32
Halifax/Robert L Stanfield International	6	98	12	10	12	12	26
Hamilton	11	20	9	16	14	9	14
Kelowna	8	36	9	12	20	9	20
Kitchener/Waterloo	14	18	10	19	8	10	18
Langley	0	0	0	0	0	0	0
London	0	0	0	0	0	0	0
Moncton/Greater Moncton International	0	0	0	0	0	0	0
Montréal/Mirabel International	17	6	25	12	6	25	6
Montréal/Pierre Elliott Trudeau International	0	0	0	0	0	0	0
Montréal/St-Hubert	0	0	0	0	0	0	0
Oshawa	0	0	0	0	0	0	0
Ottawa/Macdonald-Cartier International	12	19	18	15	8	17	8
Pitt Meadows	0	0	0	0	0	0	0
Prince George	0	0	0	0	0	0	0
Québec/Jean Lesage International	18	6	24	13	4	24	4
Regina International	7	82	18	23	22	18	34
Saskatoon/John G Diefenbaker International	5	134	25	17	16	11	24
Sault Ste. Marie	9	32	19	22	14	19	26
St. John's International	0	0	0	0	0	0	0
St-Jean	0	0	0	0	0	0	0
Sudbury	0	0	0	0	0	0	0
Thunder Bay	13	18	6	13	10	6	10
Toronto/Buttonville Municipal	0	0	0	0	0	0	0
Toronto/City Centre	0	0	0	0	0	0	0
Toronto/Lester B Pearson International	0	0	0	0	0	0	0
Vancouver Harbour	0	0	0	0	0	0	0
Vancouver International	0	0	0	0	0	0	0
Victoria International	1	542	17	23	26	17	58
Whitehorse International	0	0	0	0	0	0	0
Windsor	15	12	13	10	10	13	12
Winnipeg/James Armstrong Richardson International	2	422	11	14	26	11	80
Winnipeg/St. Andrews	0	0	0	0	0	0	0
Yellowknife	4	136	24	11	18	2	40

Table 12-2
Local movements - military, peak hour and peak day — NAV CANADA flight service stations

	Rank of movements	Number of movements	Peak hour occurrence			Peak day occurrence	
			Day in month	Hour in day	Number of movements	Day in month	Number of movements
Brandon Municipal	3	78	12	23	16	12	28
Campbell River	0	0	0	0	0	0	0
Castlegar	0	0	0	0	0	0	0
Charlottetown	4	32	17	15	26	17	30
Churchill	0	0	0	0	0	0	0
Cranbrook	0	0	0	0	0	0	0
Dawson Creek	0	0	0	0	0	0	0
Deer Lake	0	0	0	0	0	0	0
Fort McMurray	0	0	0	0	0	0	0
Fort Nelson	0	0	0	0	0	0	0
Fort St John	0	0	0	0	0	0	0
Fredericton International	7	8	3	15	8	3	8
Grande Prairie	0	0	0	0	0	0	0
High Level	0	0	0	0	0	0	0
Îles-de-la-Madeleine	0	0	0	0	0	0	0
Inuvik/Mike Zubko	10	4	16	11	4	16	4
Iqaluit	0	0	0	0	0	0	0
Kamloops	5	30	26	11	16	26	16
Kenora	0	0	0	0	0	0	0
Kingston	0	0	0	0	0	0	0
Kuujuuaq	0	0	0	0	0	0	0
Kuujuuarapik	0	0	0	0	0	0	0
La Grande Rivière	0	0	0	0	0	0	0
La Ronge	0	0	0	0	0	0	0
Lethbridge	0	0	0	0	0	0	0
Lloydminster	0	0	0	0	0	0	0
Medicine Hat	8	6	29	17	4	29	6
Mont-Joli	0	0	0	0	0	0	0
Nanaimo	1	426	29	14	30	28	118
Norman Wells	2	108	25	7	30	25	108
North Bay	6	12	17	15	12	17	12
Ottawa/Gatineau	0	0	0	0	0	0	0
Peace River	0	0	0	0	0	0	0
Penticton	9	6	25	14	6	25	6
Port Hardy	0	0	0	0	0	0	0
Prince Albert	0	0	0	0	0	0	0
Prince Rupert	0	0	0	0	0	0	0
Rankin Inlet	0	0	0	0	0	0	0
Red Deer Regional	0	0	0	0	0	0	0
Rouyn-Noranda	0	0	0	0	0	0	0
Saint John	0	0	0	0	0	0	0
Sept-Îles	0	0	0	0	0	0	0
Sioux Lookout	0	0	0	0	0	0	0
Smithers	0	0	0	0	0	0	0
St Anthony	12	2	15	10	2	15	2
St Catharines	0	0	0	0	0	0	0
Terrace	0	0	0	0	0	0	0
Thompson	0	0	0	0	0	0	0
Timmins	0	0	0	0	0	0	0
Val-D'or	0	0	0	0	0	0	0
Victoria Harbour	0	0	0	0	0	0	0
Wabush	0	0	0	0	0	0	0
Whitecourt	0	0	0	0	0	0	0
Williams Lake	11	2	30	11	2	30	2

Methodology

Survey universe

Coverage

The survey covers all aircraft movements at Canadian airports with NAV CANADA air traffic control towers and flight service stations.

Methodology survey

The Itinerant movement record is designed to capture:

- Aircraft identification
- Aircraft type
- The last station before landing at the reporting airport or the next station after take-off
- Arrival or departure
- Time of movement
- Runway used
- Flight rules (Instrument flight rules or Visual flight rules).

The Local aircraft movement record provides for reports of local movements by:

- Hour
- Single engine aircraft
- Multi-engine aircraft
- Jet aircraft
- Military aircraft
- Date of movement

Processing of aircraft movement statistics involves several stages. Preliminary monthly data by class of operation are released in **Preliminary aircraft movement statistics**, catalogue no. 51F0001P (TP-1496 (NAV CANADA towered airports only)). Data which follow in **Aircraft movement statistics - Monthly** report, catalogue nos. 51-007-X and 51-008-X (TP-141) may contain revisions to the originally released figures. Annual tables, which may reflect further revisions, are released in the publication, **Aircraft movement statistics - Annual** report - TP-577. In particular, data on itinerant movements by type of operation may reflect revisions as various sources of comparative information (data collected from commercial air carriers by the Aviation Statistics Centre, Statistics Canada) become available during the processing cycle. Finally, when revisions are required after the release of TP-577, they are contained in the five year historical summary of subsequent editions of TP-577. These revisions are also reflected in the CANSIM tables, both monthly and annual.

The records are completed daily, based on a twenty-four hour clock running from zero hour to 23:59. The times recorded are Coordinated Universal Time (UTC); however, published statistics are shown in local times. The records are transmitted to the Aviation Statistics Centre.

The Aviation Statistics Centre maintains a data base of parameter files of current information on all registered aircraft. The storage of this information reduces the reporting burden of the survey respondents and limits the element of human error associated with the preparation of source documents.

Other parameter files information includes registered aircraft identifications and their corresponding aircraft types, gross take-off weights, types of power plant (piston, jet or turboprop); whether the aircraft are fixed wing, helicopters or gliders. This information also provides a basis for identifying type of flights (commercial, private and government) and the geographical area in which the flights take place.

The parameter files also include airport environment information against which the airport category is checked; the reported runway is validated and the time difference between UTC and Local is assigned.

Data quality and limitations

Aircraft movement statistics are accumulated from data originating with air traffic control tower units or flight service station personnel. Because staff in these positions are highly trained in factual observation and reporting, the entries in the data bank are of a high quality.

The procedures for reporting aircraft movements on the Daily air traffic records by tower units are described in the NAV CANADA Air traffic control manual of operations (TP 703) Volume 1, Para. 1023 to 1023.5. Definitions for terms used in these paragraphs can be found in the appendix I "Glossary of terms" of this report.

To maintain uniformity in the reporting of source data, ASC issues to air traffic control units an "Air traffic designators" handbook (TP 143) listing the official Transport Canada aircraft type designators and the designators of various domestic and international air carriers. This handbook and another titled "Canada flight supplement" listing various airport codes serve as references to help ensure the reporting of the proper aircraft identity and the point of origin and destination of flights.

The processing system contains editing procedures designed to identify data errors occurring during transcription or during data capture of forms. Identified errors are manually corrected by ASC editing staff.

Errors may occur if an aircraft type code which exists is reported or data captured in error for a flight. For example, the reporting or keying of B727 for a flight actually performed by a B737 may not be detected during the system editing. That the aircraft type information is recorded by highly trained air traffic control tower staff using a common handbook of official aircraft codes will minimize this problem.

Similarly, the breakdown of the data on a geographic basis by use of location codes can be subject to error. For smaller locations, alphanumeric location codes are often used and the sequence of numbers and letters determines the geographic area to which the data are assigned. In some cases, where a sequence error has been introduced into the system either at the reporting unit or at data capture, a domestic movement may be classified as transborder or vice versa. The use of common manuals of location identifiers works to minimize this occurrence.

Factors influencing the data

Roberval – the Flight Service Station closed in November 2006. As of December 2006, Roberval appears in Volume II – Airports without air traffic control towers.

Harmony Airways ceased its operations on April 9, 2007.

Pitt Meadows' movement counts may be understated due to an incomplete file for April.

Appendix I

Glossary of terms

Air carrier

Aircraft operators licensed by the Canadian Transportation Agency to transport persons, mail and/or goods by air.

Levels I to III air carriers (Defn 2000) – This includes every Canadian air carrier that, in each of the two calendar years immediately preceding the report year, realized annual gross revenues of \$1,000,000 or more for the air services for which the air carrier held a licence. Also includes foreign air carriers.

Levels IV to VI air carriers (Defn 2000) – Canadian air carriers not classified in report level I-III that, in each of the two calendar years immediately preceding the report year, realized annual gross revenues of less than \$1,000,000 for the air services for which the air carrier held a licence. Since 2000, levels IV and VI are no longer applicable.

Aircraft movement

A take off, a landing, or a simulated approach by an aircraft. ATC Manops amendment 8-8-83. NC-703.

Class of operation

Aircraft movements are classified as either “Itinerant” or “Local”.

Commercial

Flights by aircraft operators licensed by the Canadian Transportation Agency to perform commercial air services. Commercial operations are divided into two categories: **Air carrier** and **Other commercial**.

Domestic itinerant movements

Movements, at a Canadian airport, of aircraft departing to or arriving from another point in Canada.

FSS

Flight service station.

Government – Civil

Aircraft owned by federal, provincial and municipal bodies as well as foreign states, but excluding those owned by crown corporations, boards and commissions. Such aircraft are coded “3” under “Purpose” in the Canadian civil aircraft register.

Government – Military

Aircraft of any branch of the armed forces of any nation.

Gross take-off weight

The maximum weight for which the aircraft is licensed to operate. For operational purposes, all weights are rounded upwards to the next 1,000 kilograms. Thus 3,200 kilograms becomes 4,000 kilograms.

I.F.R. flight

A flight conducted in accordance with Instrument flight rules.

International movements

Movements, at a Canadian airport, of aircraft arriving from or departing to a point outside Canada. International movements are subclassified into “transborder” (to or from a point in the United States including Alaska but excluding Hawaii), and “other international” (to or from points in countries other than Canada and the United States).

Since aircraft movements are reported on the basis of place “arrived from” or “departed to”, an arrival at Mirabel airport from London, England would appear under “other international”. If the same aircraft moved on to Toronto, both the departure at Mirabel and the arrival at Toronto would be shown as “domestic”.

Itinerant movements

At Airports **with** control towers and/or Flight service stations: for the purpose of completing air traffic records, itinerant movements are considered as movements in which aircraft proceed to or arrive from another location; or where aircraft leave the circuit but return without landing at another airport. At Airports **without** control towers: an aircraft movement in which the aircraft arrives from or departs to a point other than the reporting airport; or a movement by an aircraft that leaves the close proximity of an airport and returns without landing at another airport.

Local movements

At Airports **with** control towers and/or Flight service stations: for the purpose of completing air traffic records, local movements are considered as movements in which the aircraft remains in the circuit. At Airports **without** control towers: an aircraft movement in which the aircraft remains in the close proximity of the airport. Local movements are often carried out during training flights (touch-and-go), equipment tests etc.

Other commercial

Flights performed by **Commercial** aircraft operators not included in the **Air carrier** categories. Flying schools, agricultural sprayers, water-bombers, aerial photography and survey, etc.

Power plant

The source of propulsion. For example, piston engines, turbo-propellers and jet engines. “Helicopters”, in this report, include both piston and turboshaft-driven engines.

Private aircraft

Aircraft used solely for private purposes, not for hire and compensation, which are classified as “Private” or “Private Restricted” in the Canadian civil aircraft register or similar registries of other countries. Owners include individuals, groups and business firms.

Runway 88

Through control zone flights, i.e. flights which communicate with the tower while transiting the tower control zone to another destination without landing at the reporting airport.

Data for these runways are not included in the grand total.

Simulated approaches

Movements that are either missed instrument or practice instrument approaches without landing.

TC

Transport Canada

Tower control zone

A controlled airspace within the proximity of an air traffic control tower, usually within a radius of less than 24 kilometres of the tower.

V.F.R. flight

A flight conducted in accordance with Visual flight rules.

Weight group

The classification of weight classes in groups for statistical purposes.