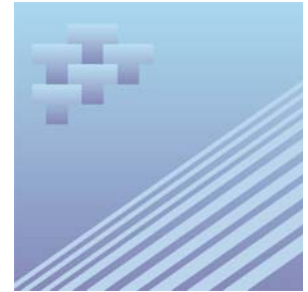




Catalogue no. 51-007-XIE

Aircraft Movement Statistics: NAV CANADA Towers and Flight Service Stations



June 2007



Statistics
Canada

Statistique
Canada

Canada

How to obtain more information

Specific inquiries about this product and related statistics or services should be directed to: Transportation Division, Statistics Canada, Ottawa, Ontario, K1A 0T6 (telephone: 1-866-500-8400).

For information on the wide range of data available from Statistics Canada, you can contact us by calling one of our toll free numbers. You can also contact us by e-mail or by visiting our website at www.statcan.ca.

National inquiries line **1-800-263-1136**

National telecommunications device for the hearing impaired **1-800-363-7629**

Depository Services Program inquiries **1-800-700-1033**

Fax line for Depository Services Program **1-800-889-9734**

E-mail inquiries infostats@statcan.ca

Website www.statcan.ca

Information to access the product

This product, catalogue no. 51-007-XIE, is available for free in electronic format. To obtain a single issue, visit our website at www.statcan.ca and select Publications.

Standards of service to the public

Statistics Canada is committed to serving its clients in a prompt, reliable and courteous manner. To this end, the Agency has developed *standards of service* which its employees observe in serving its clients.

To obtain a copy of these service standards, please contact Statistics Canada toll free at 1-800-263-1136. The service standards are also published on www.statcan.ca under About us > Providing services to Canadians.



Statistics Canada
Transportation Division

Aircraft Movement Statistics: NAV CANADA Towers and Flight Service Stations

June 2007

Published by authority of the Minister responsible for Statistics Canada

© Minister of Industry, 2007 and the © Minister of Transport, 2007.

All rights reserved. The content of this electronic publication may be reproduced, in whole or in part, and by any means, without further permission from Statistics Canada, subject to the following conditions: that it be done solely for the purposes of private study, research, criticism, review or newspaper summary, and/or for non-commercial purposes; and that Statistics Canada be fully acknowledged as follows: Source (or "Adapted from", if appropriate): Statistics Canada, year of publication, name of product, catalogue number, volume and issue numbers, reference period and page(s). Otherwise, no part of this publication may be reproduced, stored in a retrieval system or transmitted in any form, by any means—electronic, mechanical or photocopy—or for any purposes without prior written permission of Licensing Services, Client Services Division, Statistics Canada, Ottawa, Ontario, Canada K1A 0T6.

July 2007

Catalogue no. 51-007-XIE, Vol. 1, No. 6

ISSN 1911-6314

Frequency: Monthly

Ottawa

La version française de cette publication est disponible sur demande (n° 51-007-XIF au catalogue).

Note of appreciation

Canada owes the success of its statistical system to a long standing partnership between Statistics Canada, the citizens of Canada, its businesses, governments and other institutions. Accurate and timely statistical information could not be produced without their continued cooperation and goodwill.

User information

Symbols

The following standard symbols are used in Statistics Canada publications:

- . not available for any reference period
- .. not available for a specific reference period
- ... not applicable
- 0 true zero or a value rounded to zero
- 0^s value rounded to 0 (zero) where there is a meaningful distinction between true zero and the value that was rounded
- p preliminary
- r revised
- x suppressed to meet the confidentiality requirements of the *Statistics Act*
- E use with caution
- F too unreliable to be published

Acknowledgements

This publication was prepared by the Aviation Statistics Centre, of the Transportation Division, Statistics Canada under the general direction of **Gord Baldwin**, Director, Transportation Division and **Norah Hillary**, Chief, Aviation Statistics Centre. **Kathie Davidson**, **Maureen de Souza**, **John Scolli** and **Sylvie Savard** contributed to the preparation of this publication.

Table of contents

Highlights	5
Analysis	6
Related products	7
Statistical tables	
1 Total aircraft movements by class of operation	10
1-1 NAV CANADA towers	10
1-2 NAV CANADA flight service stations	11
2 Total aircraft movements, civil and military	12
2-1 NAV CANADA towers	12
2-2 NAV CANADA flight service stations	13
3 Itinerant movements by type of operator	14
3-1 NAV CANADA towers	14
3-2 NAV CANADA flight service stations	15
4 Itinerant movements by I.F.R. (Instrument flight rules) and V.F.R. (Visual flight rules) and runway 88 movements	16
4-1 NAV CANADA towers	16
4-2 NAV CANADA flight service stations	17
5 Itinerant movements by type of power plant	18
5-1 NAV CANADA towers	18
5-2 NAV CANADA flight service stations	19
6 Itinerant movements by aircraft weight group	20
6-1 NAV CANADA towers	20
6-2 NAV CANADA flight service stations	21
7 Itinerant movements, domestic, transborder and international	22
7-1 NAV CANADA towers	22
7-2 NAV CANADA flight service stations	26

Table of contents – continued

8	Total aircraft movements, peak hour and peak day	31
8-1	NAV CANADA towers	31
8-2	NAV CANADA flight service stations	32
9	Itinerant aircraft movements, peak hour and peak day	33
9-1	NAV CANADA towers	33
9-2	NAV CANADA flight service stations	34
10	Local movements, peak hour and peak day	35
10-1	NAV CANADA towers	35
10-2	NAV CANADA flight service stations	36
11	Local movements - civil, peak hour and peak day	37
11-1	NAV CANADA towers	37
11-2	NAV CANADA flight service stations	38
12	Local movements - military, peak hour and peak day	39
12-1	NAV CANADA towers	39
12-2	NAV CANADA flight service stations	40
Data quality, concepts and methodology		
	Methodology	41
	Data quality and limitations	43
Appendix		
I	Glossary of terms	44

Highlights

- For the thirteenth consecutive month, aircraft take-offs and landings at Canadian airports with NAV CANADA air traffic control towers and flight service stations increased in year-over-year monthly comparisons. These 96 airports reported 564,370 movements in June 2007 compared with 530,917 movements at 97 airports in June 2006, an increase of 6.3% (+33,453 movements).
- Itinerant movements (flights from one airport to another) increased by 2.1% (+8,282 movements) in June 2007 compared with the same month a year earlier.
- Local movements (flights that remain in the vicinity of the airport) increased by 18.5% (+25,171 movements) in June 2007 compared with June 2006.

Table 1
Distribution of aircraft movements at NAV CANADA Towers and Flight Service Stations

	NAV CANADA towers		NAV CANADA Flight Service Stations		Total	
	number	Change from June 2007/ June 2006	number	Change from June 2007/ June 2006	number	Change from June 2007/ June 2006
Grand total	445,786	8.9	118,584	-2.5	564,370	6.3
Itinerant movements						
Air carriers	214,376	4.5	65,947	-5.3	280,323	2.0
Other commercial movements	42,566	9.3	7,791	11.1	50,357	9.5
Private movements	40,376	-2.5	16,022	0.3	56,398	-1.7
Government civil movements	5,644	-5.0	2,851	-18.5	8,495	-10.0
Government military movements	5,018	-0.9	2,514	11.2	7,532	2.8
Itinerant total	307,980	3.9	95,125	-3.3	403,105	2.1
Local movements						
Civil local movements	136,055	22.0	23,293	1.2	159,348	18.5
Military local movements	1,751	31.3	166	-30.0	1,917	22.0
Local total	137,806	22.1	23,459	0.9	161,265	18.5

Analysis

For the thirteenth consecutive month, aircraft take-offs and landings at Canadian airports with NAV CANADA air traffic control towers and flight service stations increased in year-over-year monthly comparisons. These 96 airports reported 564,370 movements in June 2007 compared with 530,917 movements at 97 airports in June 2006, an increase of 6.3% (+33,453 movements).

Itinerant movements (flights from one airport to another) increased by 2.1% (+8,282 movements) in June 2007 compared with the same month a year earlier.

Local movements (flights that remain in the vicinity of the airport) increased by 18.5% (+25,171 movements) in June 2007 compared with June 2006.

Airports with NAV CANADA air traffic control towers

The 42 Canadian airports with NAV CANADA air traffic control towers reported 445,786 aircraft take-offs and landings in June, up 8.9% compared with June 2006 (409,285 movements). Year-over-year increases in aircraft movements were reported by 30 of the airports in June 2007. The variations ranged from 169.0% at Moncton/Greater Moncton International to -13.5% at St. John's International.

Itinerant movements (flights from one airport to another) increased by 3.9% (+11,533 movements) in June compared with the same month a year earlier. Year-over-year variations in itinerant movements ranged from a 84.1% increase (+2,848 movements) at Moncton/Greater Moncton International to a decline of 13.5% (-568 movements) at Pitt Meadows, British Columbia.

Local movements (flights that remain in the vicinity of the airport) increased by 22.1% (+24,968 movements) in June compared with June 2006. Year-over-year variations in local movements ranged from a 464.0% increase (+4,519 movements) at Moncton/Greater Moncton International to a decline of 51.1% (-228 movements) at St. John's International.

Airports with NAV CANADA flight service stations

The 54 Canadian airports with NAV CANADA flight service stations reported 118,584 aircraft take-offs and landings in June, down 2.5% compared with 55 flight service stations in June 2006 (121,632 movements). Year-over-year increases in aircraft movements were reported by 27 of these airports in June 2007. The variations ranged from a 49.1% increase (+723 movements) at Charlottetown to a decline of 50.8% (-2,385 movements) at La Ronge, Saskatchewan.

Itinerant movements (flights from one airport to another) decreased by 3.3% (-3,251 movements) in June compared with the same month a year earlier. Year-over-year variations in itinerant movements ranged from a 38.8% increase (+433 movements) at Port Hardy, British Columbia to a decline of 53.4% (-2,371 movements) at La Ronge.

Local movements (flights that remain in the vicinity of the airport) recorded in June 2007 stayed at the level recorded a year earlier. Inuvik/Mike Zubko, Northwest Territories recorded the largest year-over-year variation in local movements, with a 350.0% increase (+133 movements) compared with June 2006.

Related products

Selected CANSIM tables from Statistics Canada

401-0005	Aircraft movements by class of operation, airports with NAV CANADA towers, preliminary, monthly
401-0006	Aircraft movements by class of operation, airports with NAV CANADA towers, preliminary, annual
401-0007	Aircraft movements, by class of operation and peak hour and peak day of movements, airports with NAV CANADA towers, monthly
401-0008	Aircraft movements, by civil and military movements, airports with NAV CANADA towers, monthly
401-0009	Itinerant movements, by type of operation, airports with NAV CANADA towers, monthly
401-0010	Itinerant movements, by instrument flight rules, visual flight rules and runway 88, airports with NAV CANADA towers, monthly
401-0011	Itinerant movements, by type of power plant, airports with NAV CANADA towers, monthly
401-0012	Itinerant movements, by aircraft gross take-off weight, airports with NAV CANADA towers, monthly
401-0013	Domestic and international itinerant movements, by type of operation, airports with NAV CANADA towers, monthly
401-0014	Aircraft movements, by class of operation and peak hour and peak day of movements, airports with NAV CANADA flight service stations, monthly
401-0015	Aircraft movements, by civil and military movements, airports with NAV CANADA flight service stations, monthly
401-0016	Itinerant movements, by type of operation, airports with NAV CANADA flight service stations, monthly
401-0017	Itinerant movements, by instrument flight rules, visual flight rules and runway 88, airports with NAV CANADA flight service stations, monthly
401-0018	Itinerant movements, by type of power plant, airports with NAV CANADA flight service stations, monthly
401-0019	Itinerant movements, by aircraft gross take-off weight, airports with NAV CANADA flight service stations, monthly
401-0020	Domestic and international itinerant movements, by type of operation, airports with NAV CANADA flight service stations, monthly

Selected surveys from Statistics Canada

2715	Aircraft Movement Statistics
------	------------------------------

Selected summary tables from Statistics Canada

- *Aircraft movements by class of operation (monthly)*

Statistical tables

Table 1-1
Total aircraft movements by class of operation — NAV CANADA towers

	Total		Itinerant		Local	
	Rank of movements	Number of movements	Rank of movements	Number of movements	Rank of movements	Number of movements
Abbotsford	12	13,908	18	5,796	4	8,112
Boundary Bay	6	17,242	14	6,804	1	10,438
Calgary International	3	21,230	3	20,986	37	244
Calgary/Springbank	7	15,672	17	5,910	3	9,762
Chicoutimi/St-Honoré	33	5,525	38	2,473	21	3,052
Edmonton City Centre	23	8,009	15	6,399	26	1,610
Edmonton International	15	10,716	7	10,274	35	442
Edmonton/Villeneuve	34	4,783	42	1,430	16	3,353
Gander International	38	3,718	37	2,612	29	1,106
Halifax/Robert L Stanfield International	27	7,608	11	7,079	33	529
Hamilton	25	7,928	26	4,666	17	3,262
Kelowna	24	7,972	25	4,750	18	3,222
Kitchener/Waterloo	14	10,885	24	5,133	10	5,752
Langley	19	9,932	31	3,540	7	6,392
London	22	8,757	20	5,577	19	3,180
Moncton/Greater Moncton International	13	11,726	16	6,233	11	5,493
Montréal/Mirabel International	42	2,423	41	1,976	34	447
Montréal/Pierre Elliott Trudeau International	4	19,742	4	19,742	0	0
Montréal/St-Hubert	11	14,347	12	6,979	5	7,368
Oshawa	28	7,472	29	3,710	14	3,762
Ottawa/Macdonald-Cartier International	8	15,333	6	10,559	12	4,774
Pitt Meadows	17	10,582	30	3,624	6	6,958
Prince George	36	3,917	36	2,815	30	1,102
Québec/Jean Lesage International	16	10,707	10	8,121	22	2,586
Regina International	31	6,518	27	4,354	23	2,164
Saskatoon/John G Diefenbaker International	21	8,773	19	5,603	20	3,170
Sault Ste. Marie	32	6,384	35	2,862	15	3,522
St. John's International	39	3,541	32	3,323	38	218
St-Jean	37	3,842	33	3,248	32	594
Sudbury	40	3,346	34	2,955	36	391
Thunder Bay	26	7,706	21	5,567	25	2,139
Toronto/Buttonville Municipal	5	19,611	8	9,255	2	10,356
Toronto/City Centre	20	9,634	23	5,198	13	4,436
Toronto/Lester B Pearson International	1	36,148	1	36,148	0	0
Vancouver Harbour	29	6,849	13	6,837	39	12
Vancouver International	2	29,301	2	29,301	0	0
Victoria International	9	15,062	9	9,042	9	6,020
Whitehorse International	41	3,281	39	2,431	31	850
Windsor	35	4,526	40	2,384	24	2,142
Winnipeg/James Armstrong Richardson International	10	14,623	5	13,115	27	1,508
Winnipeg/St. Andrews	18	9,974	28	3,804	8	6,170
Yellowknife	30	6,533	22	5,365	28	1,168
Total of NAV CANADA towers (42)	.	445,786	.	307,980	.	137,806

Table 1-2
Total aircraft movements by class of operation — NAV CANADA flight service stations

	Total		Itinerant		Local	
	Rank of movements	Number of movements	Rank of movements	Number of movements	Rank of movements	Number of movements
Brandon Municipal	29	1,831	35	1,429	22	402
Campbell River	17	2,620	19	2,002	14	618
Castlegar	46	880	49	650	26	230
Charlottetown	25	2,197	23	1,701	20	496
Churchill	48	822	46	808	47	14
Cranbrook	42	1,155	44	960	27	195
Dawson Creek	40	1,283	47	747	15	536
Deer Lake	35	1,662	31	1,574	42	88
Fort McMurray	1	8,055	1	7,003	8	1,052
Fort Nelson	30	1,789	25	1,679	36	110
Fort St John	12	2,959	9	2,430	16	529
Fredericton International	21	2,365	16	2,115	24	250
Grande Prairie	4	4,197	4	3,237	9	960
High Level	20	2,372	11	2,284	41	88
Îles-de-la-Madeleine	54	394	54	390	50	4
Inuvik/Mike Zubko	19	2,410	14	2,239	28	171
Iqaluit	32	1,782	26	1,656	35	126
Kamloops	7	3,777	12	2,275	4	1,502
Kenora	33	1,752	28	1,614	34	138
Kingston	9	3,163	20	1,944	6	1,219
Kuujuuaq	39	1,298	38	1,148	30	150
Kuujuuarapik	51	490	51	488	51	2
La Grande Rivière	47	845	45	839	49	6
La Ronge	22	2,313	18	2,067	25	246
Lethbridge	14	2,908	15	2,214	13	694
Lloydminster	36	1,616	39	1,098	18	518
Medicine Hat	24	2,261	36	1,327	10	934
Mont-Joli	52	418	52	418	0	0
Nanaimo	11	2,970	13	2,248	12	722
Norman Wells	28	1,876	30	1,574	23	302
North Bay	5	3,962	17	2,102	2	1,860
Ottawa/Gatineau	16	2,796	34	1,434	5	1,362
Peace River	43	1,130	40	1,066	44	64
Penticton	13	2,938	21	1,828	7	1,110
Port Hardy	37	1,564	32	1,550	46	14
Prince Albert	31	1,783	24	1,691	37	92
Prince Rupert	50	590	50	560	45	30
Rankin Inlet	38	1,302	37	1,292	48	10
Red Deer Regional	6	3,846	10	2,310	3	1,536
Rouyn-Noranda	44	1,110	43	964	33	146
Saint John	27	2,134	22	1,732	21	402
Sept-Îles	10	2,996	7	2,470	17	526
Sioux Lookout	15	2,803	6	2,715	40	88
Smithers	41	1,185	41	1,038	31	147
St Anthony	53	396	53	394	52	2
St Catharines	3	4,747	5	2,821	1	1,926
Terrace	34	1,749	29	1,591	29	158
Thompson	8	3,334	3	3,244	38	90
Timmins	18	2,609	8	2,463	32	146
Val-D'or	26	2,147	27	1,641	19	506
Victoria Harbour	2	4,785	2	4,785	0	0
Wabush	49	809	48	735	43	74
Whitecourt	23	2,309	33	1,531	11	778
Williams Lake	45	1,100	42	1,010	39	90
Total of all flight service stations (54)	.	118,584	.	95,125	.	23,459

Table 2-1
Total aircraft movements, civil and military — NAV CANADA towers

	Civil movements			Military movements				
	Total	Itinerant		Local	Total	Itinerant		Local
		Commercial	Private and government					
	number							
Abbotsford	13,819	4,466	1,253	8,100	89	77	12	
Boundary Bay	17,234	5,218	1,578	10,438	8	8	0	
Calgary International	21,090	19,300	1,546	244	140	140	0	
Calgary/Springbank	15,663	4,088	1,814	9,761	9	8	1	
Chicoutimi/St-Honoré	5,459	2,145	288	3,026	66	40	26	
Edmonton City Centre	7,867	4,240	2,047	1,580	142	112	30	
Edmonton International	10,620	9,833	369	418	96	72	24	
Edmonton/Villeneuve	4,743	872	518	3,353	40	40	0	
Gander International	3,287	1,588	743	956	431	281	150	
Halifax/Robert L. Stanfield International	7,383	6,440	468	475	225	171	54	
Hamilton	7,914	3,558	1,100	3,256	14	8	6	
Kelowna	7,956	3,899	835	3,222	16	16	0	
Kitchener/Waterloo	10,816	3,722	1,362	5,732	69	49	20	
Langley	9,922	2,123	1,411	6,388	10	6	4	
London	8,653	3,882	1,659	3,112	104	36	68	
Moncton/Greater Moncton International	11,637	5,690	472	5,475	89	71	18	
Montréal/Mirabel International	2,356	1,509	410	437	67	57	10	
Montréal/Pierre Elliott Trudeau International	19,702	17,391	2,311	0	40	40	0	
Montréal/St-Hubert	14,185	4,843	1,990	7,352	162	146	16	
Oshawa	7,469	2,337	1,370	3,762	3	3	0	
Ottawa/Macdonald-Cartier International	15,139	9,256	1,127	4,756	194	176	18	
Pitt Meadows	10,554	2,166	1,432	6,956	28	26	2	
Prince George	3,884	2,050	732	1,102	33	33	0	
Québec/Jean Lesage International	10,511	6,355	1,578	2,578	196	188	8	
Regina International	6,186	3,091	989	2,106	332	274	58	
Saskatoon/John G. Diefenbaker International	8,288	4,339	961	2,988	485	303	182	
Sault Ste. Marie	6,309	2,424	389	3,496	75	49	26	
St. John's International	3,304	2,734	352	218	237	237	0	
St-Jean	2,740	669	1,481	590	1,102	1,098	4	
Sudbury	3,296	2,462	443	391	50	50	0	
Thunder Bay	7,538	4,833	610	2,095	168	124	44	
Toronto/Buttonville Municipal	19,610	6,478	2,776	10,356	1	1	0	
Toronto/City Centre	9,596	4,190	970	4,436	38	38	0	
Toronto/Lester B. Pearson International	36,126	34,577	1,549	0	22	22	0	
Vancouver Harbour	6,845	6,560	273	12	4	4	0	
Vancouver International	29,279	27,633	1,646	0	22	22	0	
Victoria International	14,502	6,886	1,964	5,652	560	192	368	
Whitehorse International	3,249	1,648	757	844	32	26	6	
Windsor	4,500	1,880	492	2,128	26	12	14	
Winnipeg/James Armstrong Richardson International	13,475	11,364	1,071	1,040	1,148	680	468	
Winnipeg/St. Andrews	9,970	3,364	436	6,170	4	4	0	
Yellowknife	6,341	4,839	448	1,054	192	78	114	
Total of NAV CANADA towers (42)	439,017	256,942	46,020	136,055	6,769	5,018	1,751	

Table 2-2
Total aircraft movements, civil and military — NAV CANADA flight service stations

	Civil movements				Military movements		
	Total	Itinerant		Local	Total	Itinerant	Local
		Commercial	Private and government				
	number						
Brandon Municipal	1,412	585	467	360	419	377	42
Campbell River	2,587	1,296	683	608	33	23	10
Castlegar	866	530	106	230	14	14	0
Charlottetown	2,159	1,402	261	496	38	38	0
Churchill	802	738	50	14	20	20	0
Cranbrook	1,140	713	232	195	15	15	0
Dawson Creek	1,283	586	161	536	0	0	0
Deer Lake	1,634	1,455	91	88	28	28	0
Fort McMurray	8,048	6,210	786	1,052	7	7	0
Fort Nelson	1,780	1,333	337	110	9	9	0
Fort St John	2,956	1,969	458	529	3	3	0
Fredericton International	2,072	1,429	413	230	293	273	20
Grande Prairie	4,037	2,257	820	960	160	160	0
High Level	2,337	2,134	115	88	35	35	0
Îles-de-la-Madeleine	368	318	50	0	26	22	4
Inuvik/Mike Zubko	2,406	2,162	73	171	4	4	0
Iqaluit	1,728	1,453	149	126	54	54	0
Kamloops	3,758	1,719	537	1,502	19	19	0
Kenora	1,716	1,072	506	138	36	36	0
Kingston	3,053	1,309	537	1,207	110	98	12
Kuujuaq	1,235	1,007	78	150	63	63	0
Kuujuarapik	488	478	8	2	2	2	0
La Grande Rivière	837	773	58	6	8	8	0
La Ronge	2,155	1,510	399	246	158	158	0
Lethbridge	2,860	1,702	464	694	48	48	0
Lloydminster	1,600	628	454	518	16	16	0
Medicine Hat	2,217	906	389	922	44	32	12
Mont-Joli	403	359	44	0	15	15	0
Nanaimo	2,965	1,247	996	722	5	5	0
Norman Wells	1,866	1,431	133	302	10	10	0
North Bay	3,920	1,387	677	1,856	42	38	4
Ottawa/Gatineau	2,767	669	736	1,362	29	29	0
Peace River	1,130	863	203	64	0	0	0
Penticton	2,831	1,112	609	1,110	107	107	0
Port Hardy	1,497	1,148	341	8	67	61	6
Prince Albert	1,728	1,294	346	88	55	51	4
Prince Rupert	588	384	174	30	2	2	0
Rankin Inlet	1,294	1,270	14	10	8	8	0
Red Deer Regional	3,800	1,592	682	1,526	46	36	10
Rouyn-Noranda	1,108	770	192	146	2	2	0
Saint John	2,021	1,166	489	366	113	77	36
Sept-Îles	2,982	2,105	351	526	14	14	0
Sioux Lookout	2,781	2,507	186	88	22	22	0
Smithers	1,183	778	258	147	2	2	0
St Anthony	396	341	53	2	0	0	0
St Catharines	4,378	1,040	1,418	1,920	369	363	6
Terrace	1,747	1,421	168	158	2	2	0
Thompson	3,288	2,922	276	90	46	46	0
Timmins	2,603	2,020	437	146	6	6	0
Val-D'or	2,137	1,311	320	506	10	10	0
Victoria Harbour	4,763	4,252	511	0	22	22	0
Wabush	805	626	105	74	4	4	0
Whitecourt	2,297	1,368	151	778	12	12	0
Williams Lake	1,092	681	321	90	8	8	0
Total of all flight service stations (54)	115,904	73,738	18,873	23,293	2,680	2,514	166

Table 3-1
Itinerant movements by type of operator — NAV CANADA towers

	Total	Air carrier movements		Other commercial movements	Private movements	Government movements	
		Levels I to III and foreign	Levels IV to VI			Civil	Military
	number						
Abbotsford	5,796	549	2,133	1,784	1,035	218	77
Boundary Bay	6,804	22	1,097	4,099	1,530	48	8
Calgary International	20,986	17,036	1,297	967	1,376	170	140
Calgary/Springbank	5,910	12	695	3,381	1,794	20	8
Chicoutimi/St-Honoré	2,473	15	1,140	990	286	2	40
Edmonton City Centre	6,399	1,743	798	1,699	1,596	451	112
Edmonton International	10,274	9,299	385	149	336	33	72
Edmonton/Villeneuve	1,430	5	179	688	514	4	40
Gander International	2,612	443	1,094	51	603	140	281
Halifax/Robert L Stanfield International	7,079	5,799	616	25	414	54	171
Hamilton	4,666	2,177	1,089	292	815	285	8
Kelowna	4,750	2,557	269	1,073	750	85	16
Kitchener/Waterloo	5,133	424	2,127	1,171	1,352	10	49
Langley	3,540	123	181	1,819	1,390	21	6
London	5,577	1,353	777	1,752	1,557	102	36
Moncton/Greater Moncton International	6,233	1,954	3,535	201	261	211	71
Montréal/Mirabel International	1,976	859	610	40	364	46	57
Montréal/Pierre Elliott Trudeau International	19,742	16,229	774	388	2,086	225	40
Montréal/St-Hubert	6,979	2,147	581	2,115	1,838	152	146
Oshawa	3,710	192	129	2,016	1,366	4	3
Ottawa/Macdonald-Cartier International	10,559	6,658	431	2,167	592	535	176
Pitt Meadows	3,624	56	939	1,171	1,416	16	26
Prince George	2,815	1,454	458	138	578	154	33
Québec/Jean Lesage International	8,121	3,869	673	1,813	1,211	367	188
Regina International	4,354	2,001	1,008	82	726	263	274
Saskatoon/John G Diefenbaker International	5,603	2,937	1,011	391	619	342	303
Sault Ste. Marie	2,862	850	162	1,412	346	43	49
St. John's International	3,323	1,529	1,110	95	187	165	237
St-Jean	3,248	142	195	332	1,445	36	1,098
Sudbury	2,955	1,511	863	88	322	121	50
Thunder Bay	5,567	2,964	1,236	633	459	151	124
Toronto/Buttonville Municipal	9,255	566	699	5,213	2,672	104	1
Toronto/City Centre	5,198	1,094	1,337	1,759	939	31	38
Toronto/Lester B Pearson International	36,148	33,957	458	162	1,495	54	22
Vancouver Harbour	6,837	6,045	381	134	271	2	4
Vancouver International	29,301	25,333	2,019	281	1,322	324	22
Victoria International	9,042	3,335	2,905	646	1,926	38	192
Whitehorse International	2,431	748	884	16	710	47	26
Windsor	2,384	554	1,212	114	472	20	12
Winnipeg/James Armstrong Richardson International	13,115	10,096	1,147	121	681	390	680
Winnipeg/St. Andrews	3,804	570	1,717	1,077	434	2	4
Yellowknife	5,365	3,937	881	21	290	158	78
Total of NAV CANADA towers (42)	307,980	173,144	41,232	42,566	40,376	5,644	5,018

Table 3-2
Itinerant movements by type of operator — NAV CANADA flight service stations

	Total	Air carrier movements		Other commercial movements	Private movements	Government movements	
		Levels I to III and foreign	Levels IV to VI			Civil	Military
	number						
Brandon Municipal	1,429	116	372	97	457	10	377
Campbell River	2,002	748	273	275	652	31	23
Castlegar	650	335	154	41	100	6	14
Charlottetown	1,701	788	200	414	208	53	38
Churchill	808	688	45	5	39	11	20
Cranbrook	960	499	62	152	224	8	15
Dawson Creek	747	269	129	188	142	19	0
Deer Lake	1,574	883	536	36	25	66	28
Fort McMurray	7,003	3,430	2,201	579	722	64	7
Fort Nelson	1,679	322	557	454	329	8	9
Fort St John	2,430	832	967	170	428	30	3
Fredericton International	2,115	776	625	28	262	151	273
Grande Prairie	3,237	1,283	897	77	767	53	160
High Level	2,284	661	1,454	19	109	6	35
Îles-de-la-Madeleine	390	291	18	9	11	39	22
Inuvik/Mike Zubko	2,239	596	1,566	0	39	34	4
Iqaluit	1,656	1,307	84	62	112	37	54
Kamloops	2,275	826	401	492	437	100	19
Kenora	1,614	411	427	234	318	188	36
Kingston	1,944	544	320	445	483	54	98
Kuujuaq	1,148	823	178	6	58	20	63
Kuujuarapik	488	413	61	4	4	4	2
La Grande Rivière	839	572	131	70	42	16	8
La Ronge	2,067	1,385	61	64	167	232	158
Lethbridge	2,214	497	59	1,146	452	12	48
Lloydminster	1,098	176	392	60	430	24	16
Medicine Hat	1,327	744	112	50	375	14	32
Mont-Joli	418	326	10	23	30	14	15
Nanaimo	2,248	456	685	106	968	28	5
Norman Wells	1,574	849	581	1	113	20	10
North Bay	2,102	537	337	513	591	86	38
Ottawa/Gatineau	1,434	155	249	265	597	139	29
Peace River	1,066	410	439	14	167	36	0
Penticton	1,828	310	691	111	582	27	107
Port Hardy	1,550	1,011	122	15	224	117	61
Prince Albert	1,691	1,103	99	92	172	174	51
Prince Rupert	560	261	118	5	140	34	2
Rankin Inlet	1,292	1,113	155	2	8	6	8
Red Deer Regional	2,310	262	1,131	199	655	27	36
Rouyn-Noranda	964	537	138	95	175	17	2
Saint John	1,732	833	189	144	479	10	77
Sept-Îles	2,470	1,287	722	96	221	130	14
Sioux Lookout	2,715	1,571	903	33	161	25	22
Smithers	1,038	567	207	4	224	34	2
St Anthony	394	43	226	72	47	6	0
St Catharines	2,821	27	918	95	1,389	29	363
Terrace	1,591	724	691	6	109	59	2
Thompson	3,244	2,217	667	38	49	227	46
Timmins	2,463	1,673	280	67	323	114	6
Val-D'or	1,641	703	312	296	253	67	10
Victoria Harbour	4,785	4,058	107	87	447	64	22
Wabush	735	348	268	10	71	34	4
Whitecourt	1,531	75	1,109	184	134	17	12
Williams Lake	1,010	387	253	41	301	20	8
Total of all flight service stations (54)	95,125	42,058	23,889	7,791	16,022	2,851	2,514

Table 4-1

**Itinerant movements by I.F.R. (Instrument flight rules) and V.F.R. (Visual flight rules) and runway 88 movements
— NAV CANADA towers**

	Itinerant movements				Runway 88 flights number	
	Total of IFR and VFR flights ¹	IFR	IFR flights, as percentage of total flights	VFR		VFR flights, as percentage of total flights
	number		percent	number		percent
Abbotsford	5,796	1,614	27.8	4,182	72.1	1,799
Boundary Bay	6,804	331	4.8	6,473	95.1	496
Calgary International	20,986	18,906	90.0	2,080	9.9	1,054
Calgary/Springbank	5,910	256	4.3	5,654	95.6	3,759
Chicoutimi/St-Honoré	2,473	121	4.8	2,352	95.1	203
Edmonton City Centre	6,399	3,025	47.2	3,374	52.7	3,757
Edmonton International	10,274	9,635	93.7	639	6.2	1,550
Edmonton/Villeneuve	1,430	16	1.1	1,414	98.8	114
Gander International	2,612	1,674	64.0	938	35.9	234
Halifax/Robert L Stanfield International	7,079	6,570	92.8	509	7.1	512
Hamilton	4,666	2,671	57.2	1,995	42.7	1,249
Kelowna	4,750	2,783	58.5	1,967	41.4	1,282
Kitchener/Waterloo	5,133	846	16.4	4,287	83.5	908
Langley	3,540	69	1.9	3,471	98.0	3,315
London	5,577	1,777	31.8	3,800	68.1	835
Moncton/Greater Moncton International	6,233	2,363	37.9	3,870	62.0	564
Montréal/Mirabel International	1,976	1,102	55.7	874	44.2	1,756
Montréal/Pierre Elliott Trudeau International	19,742	18,741	94.9	1,001	5.0	4,362
Montréal/St-Hubert	6,979	1,588	22.7	5,391	77.2	1,981
Oshawa	3,710	201	5.4	3,509	94.5	834
Ottawa/Macdonald-Cartier International	10,559	7,484	70.8	3,075	29.1	1,357
Pitt Meadows	3,624	35	0.9	3,589	99.0	3,152
Prince George	2,815	1,561	55.4	1,254	44.5	566
Québec/Jean Lesage International	8,121	4,778	58.8	3,343	41.1	916
Regina International	4,354	2,511	57.6	1,843	42.3	119
Saskatoon/John G Diefenbaker International	5,603	3,512	62.6	2,091	37.3	221
Sault Ste. Marie	2,862	1,204	42.0	1,658	57.9	187
St. John's International	3,323	3,068	92.3	255	7.6	265
St-Jean	3,248	299	9.2	2,949	90.7	300
Sudbury	2,955	1,896	64.1	1,059	35.8	550
Thunder Bay	5,567	3,876	69.6	1,691	30.3	365
Toronto/Buttonville Municipal	9,255	978	10.5	8,277	89.4	1,288
Toronto/City Centre	5,198	1,365	26.2	3,833	73.7	4,196
Toronto/Lester B Pearson International	36,148	35,987	99.5	161	0.4	93
Vancouver Harbour	6,837	71	1.0	6,766	98.9	3,470
Vancouver International	29,301	21,926	74.8	7,375	25.1	13,457
Victoria International	9,042	3,521	38.9	5,521	61.0	11,736
Whitehorse International	2,431	572	23.5	1,859	76.4	1,427
Windsor	2,384	748	31.3	1,636	68.6	106
Winnipeg/James Armstrong Richardson International	13,115	10,754	81.9	2,361	18.0	2,628
Winnipeg/St. Andrews	3,804	100	2.6	3,704	97.3	359
Yellowknife	5,365	2,425	45.2	2,940	54.7	3,590
Total of NAV CANADA towers (42)	307,980	182,960	59.4	125,020	40.6	80,912

1. Total excludes runway 88 flights.

Table 4-2

Itinerant movements by I.F.R. (Instrument flight rules) and V.F.R. (Visual flight rules) and runway 88 movements — NAV CANADA flight service stations

	Itinerant movements				Runway 88 flights number	
	Total of IFR and VFR flights ¹	IFR	IFR flights, as percentage of total flights	VFR		VFR flights, as percentage of total flights
	number		percent	number		percent
Brandon Municipal	1,429	174	12.1	1,255	87.8	90
Campbell River	2,002	523	26.1	1,479	73.8	547
Castlegar	650	361	55.5	289	44.4	90
Charlottetown	1,701	938	55.1	763	44.8	55
Churchill	808	695	86.0	113	13.9	66
Cranbrook	960	556	57.9	404	42.0	192
Dawson Creek	747	241	32.2	506	67.7	71
Deer Lake	1,574	1,410	89.5	164	10.4	26
Fort McMurray	7,003	1,955	27.9	5,048	72.0	160
Fort Nelson	1,679	336	20.0	1,343	79.9	160
Fort St John	2,430	814	33.4	1,616	66.5	198
Fredericton International	2,115	1,031	48.7	1,084	51.2	138
Grande Prairie	3,237	1,407	43.4	1,830	56.5	307
High Level	2,284	283	12.3	2,001	87.6	566
Îles-de-la-Madeleine	390	363	93.0	27	6.9	3
Inuvik/Mike Zubko	2,239	302	13.4	1,937	86.5	113
Iqaluit	1,656	1,247	75.3	409	24.6	8
Kamloops	2,275	1,008	44.3	1,267	55.6	349
Kenora	1,614	616	38.1	998	61.8	301
Kingston	1,944	715	36.7	1,229	63.2	127
Kuujuuaq	1,148	380	33.1	768	66.8	45
Kuujuarapik	488	248	50.8	240	49.1	11
La Grande Rivière	839	515	61.3	324	38.6	266
La Ronge	2,067	858	41.5	1,209	58.4	1,903
Lethbridge	2,214	653	29.4	1,561	70.5	102
Lloydminster	1,098	294	26.7	804	73.2	42
Medicine Hat	1,327	424	31.9	903	68.0	401
Mont-Joli	418	289	69.1	129	30.8	34
Nanaimo	2,248	535	23.7	1,713	76.2	1,500
Norman Wells	1,574	179	11.3	1,395	88.6	165
North Bay	2,102	761	36.2	1,341	63.7	566
Ottawa/Gatineau	1,434	211	14.7	1,223	85.2	136
Peace River	1,066	316	29.6	750	70.3	218
Penticton	1,828	322	17.6	1,506	82.3	216
Port Hardy	1,550	457	29.4	1,093	70.5	398
Prince Albert	1,691	1,173	69.3	518	30.6	201
Prince Rupert	560	328	58.5	232	41.4	39
Rankin Inlet	1,292	783	60.6	509	39.3	0
Red Deer Regional	2,310	370	16.0	1,940	83.9	383
Rouyn-Noranda	964	669	69.3	295	30.6	150
Saint John	1,732	1,138	65.7	594	34.2	54
Sept-Îles	2,470	1,421	57.5	1,049	42.4	317
Sioux Lookout	2,715	1,638	60.3	1,077	39.6	1,694
Smithers	1,038	532	51.2	506	48.7	389
St Anthony	394	258	65.4	136	34.5	2
St Catharines	2,821	193	6.8	2,628	93.1	448
Terrace	1,591	727	45.6	864	54.3	463
Thompson	3,244	1,502	46.3	1,742	53.6	398
Timmins	2,463	1,634	66.3	829	33.6	328
Val-D'or	1,641	715	43.5	926	56.4	814
Victoria Harbour	4,785	60	1.2	4,725	98.7	474
Wabush	735	603	82.0	132	17.9	363
Whitecourt	1,531	132	8.6	1,399	91.3	132
Williams Lake	1,010	443	43.8	567	56.1	350
Total of all flight service stations (54)	95,125	35,736	37.6	59,389	62.4	16,569

1. Total excludes runway 88 flights.

Table 5-1
Itinerant movements by type of power plant — NAV CANADA towers

	Total	Jet engines	Turbo-propellers	Piston engines	Helicopters	Gliders
	number					
Abbotsford	5,796	479	252	4,075	989	1
Boundary Bay	6,804	3	22	6,386	390	3
Calgary International	20,986	13,619	5,155	1,560	650	2
Calgary/Springbank	5,910	26	97	5,039	748	0
Chicoutimi/St-Honoré	2,473	14	48	2,133	278	0
Edmonton City Centre	6,399	575	2,174	2,750	898	2
Edmonton International	10,274	6,498	3,107	619	50	0
Edmonton/Villeneuve	1,430	16	9	1,151	225	29
Gander International	2,612	898	708	698	304	4
Halifax/Robert L Stanfield International	7,079	4,335	1,963	461	320	0
Hamilton	4,666	1,731	937	1,831	167	0
Kelowna	4,750	1,612	1,241	1,487	410	0
Kitchener/Waterloo	5,133	271	435	4,018	409	0
Langley	3,540	0	104	2,749	679	8
London	5,577	468	1,392	3,441	275	1
Moncton/Greater Moncton International	6,233	1,150	920	4,050	108	5
Montréal/Mirabel International	1,976	737	337	601	301	0
Montréal/Pierre Elliott Trudeau International	19,742	12,928	5,572	866	376	0
Montréal/St-Hubert	6,979	159	923	5,220	676	1
Oshawa	3,710	16	116	3,417	161	0
Ottawa/Macdonald-Cartier International	10,559	5,303	2,234	2,586	436	0
Pitt Meadows	3,624	5	86	3,203	319	11
Prince George	2,815	655	1,132	641	380	7
Québec/Jean Lesage International	8,121	1,332	3,084	2,965	729	11
Regina International	4,354	1,464	798	1,975	107	10
Saskatoon/John G Diefenbaker International	5,603	1,519	1,846	2,160	76	2
Sault Ste. Marie	2,862	69	1,009	1,760	24	0
St. John's International	3,323	1,431	1,530	104	258	0
St-Jean	3,248	4	94	2,063	32	1,055
Sudbury	2,955	64	1,820	622	449	0
Thunder Bay	5,567	1,011	2,992	1,073	491	0
Toronto/Buttonville Municipal	9,255	138	668	7,983	465	1
Toronto/City Centre	5,198	7	1,345	3,122	724	0
Toronto/Lester B Pearson International	36,148	29,916	6,112	83	37	0
Vancouver Harbour	6,837	0	3,524	2,303	1,010	0
Vancouver International	29,301	13,441	10,439	4,141	1,280	0
Victoria International	9,042	1,261	2,475	5,039	267	0
Whitehorse International	2,431	313	501	1,252	365	0
Windsor	2,384	93	588	1,648	55	0
Winnipeg/James Armstrong Richardson International	13,115	5,816	5,373	1,751	175	0
Winnipeg/St. Andrews	3,804	0	329	3,274	201	0
Yellowknife	5,365	895	3,100	650	719	1
Total of NAV CANADA towers (42)	307,980	110,272	76,591	102,950	17,013	1,154

Table 5-2
Itinerant movements by type of power plant — NAV CANADA flight service stations

	Total	Jet engines	Turbo-propellers	Piston engines	Helicopters	Gliders
	number					
Brandon Municipal	1,429	38	203	790	170	228
Campbell River	2,002	64	858	745	335	0
Castlegar	650	16	367	186	81	0
Charlottetown	1,701	339	429	884	49	0
Churchill	808	9	706	46	47	0
Cranbrook	960	28	477	411	44	0
Dawson Creek	747	10	299	315	123	0
Deer Lake	1,574	382	1,023	57	112	0
Fort McMurray	7,003	860	2,284	1,890	1,969	0
Fort Nelson	1,679	34	342	477	826	0
Fort St John	2,430	281	669	419	1,061	0
Fredericton International	2,115	306	594	853	362	0
Grande Prairie	3,237	284	1,322	852	658	121
High Level	2,284	8	951	394	931	0
Îles-de-la-Madeleine	390	14	310	48	18	0
Inuvik/Mike Zubko	2,239	126	1,188	288	637	0
Iqaluit	1,656	448	1,096	25	87	0
Kamloops	2,275	24	911	982	358	0
Kenora	1,614	113	717	492	292	0
Kingston	1,944	69	642	1,093	140	0
Kuujuuaq	1,148	135	724	112	177	0
Kuujuuarapik	488	2	423	6	57	0
La Grande Rivière	839	6	690	119	24	0
La Ronge	2,067	31	1,313	672	51	0
Lethbridge	2,214	76	800	1,318	20	0
Lloydminster	1,098	6	256	756	80	0
Medicine Hat	1,327	33	464	641	189	0
Mont-Joli	418	12	293	92	21	0
Nanaimo	2,248	27	520	1,623	78	0
Norman Wells	1,574	154	482	515	423	0
North Bay	2,102	86	780	891	337	8
Ottawa/Gatineau	1,434	12	235	1,018	161	8
Peace River	1,066	24	354	229	459	0
Penticton	1,828	37	370	858	563	0
Port Hardy	1,550	68	736	518	228	0
Prince Albert	1,691	10	1,179	449	53	0
Prince Rupert	560	51	281	102	126	0
Rankin Inlet	1,292	154	948	21	169	0
Red Deer Regional	2,310	41	479	1,494	296	0
Rouyn-Noranda	964	67	663	220	14	0
Saint John	1,732	427	588	611	106	0
Sept-Îles	2,470	86	1,230	530	624	0
Sioux Lookout	2,715	51	2,267	355	42	0
Smithers	1,038	20	650	183	185	0
St Anthony	394	4	311	28	51	0
St Catharines	2,821	49	45	1,986	421	320
Terrace	1,591	22	769	67	733	0
Thompson	3,244	42	2,362	560	280	0
Timmins	2,463	5	1,753	503	202	0
Val-D'or	1,641	114	722	527	278	0
Victoria Harbour	4,785	0	3,245	802	738	0
Wabush	735	4	572	95	64	0
Whitecourt	1,531	12	359	209	951	0
Williams Lake	1,010	14	508	351	137	0
Total of all flight service stations (54)	95,125	5,335	42,759	29,708	16,638	685

Table 6-1
Itinerant movements by aircraft weight group — NAV CANADA towers

	Gross take-off weight in kilograms									
	2 000 and under	2 001 to 4 000	4 001 to 5 670	5 671 to 9 000	9 001 to 18 000	18 001 to 35 000	35 001 to 70 000	70 001 to 90 000	90 001 to 136 000	136 001 and over
	number									
Abbotsford	4,564	393	179	73	77	41	442	25	0	2
Boundary Bay	6,493	264	42	1	3	0	1	0	0	0
Calgary International	1,524	759	1,978	2,376	966	3,881	6,942	1,498	368	694
Calgary/Springbank	5,438	321	127	15	7	2	0	0	0	0
Chicoutimi/St-Honoré	2,153	221	84	0	1	14	0	0	0	0
Edmonton City Centre	2,900	643	1,805	726	262	56	0	7	0	0
Edmonton International	455	214	610	877	438	2,407	4,234	749	163	127
Edmonton/Villeneuve	1,314	38	72	2	4	0	0	0	0	0
Gander International	747	49	157	407	551	425	45	88	22	121
Halifax/Robert L. Stanfield International	208	312	534	788	1,026	1,278	2,080	435	224	194
Hamilton	1,520	542	399	384	380	213	474	8	710	36
Kelowna	1,785	93	210	778	316	708	834	0	26	0
Kitchener/Waterloo	4,240	270	190	89	252	26	66	0	0	0
Langley	3,310	220	8	0	2	0	0	0	0	0
London	3,634	233	372	75	812	246	185	9	5	6
Moncton/Greater Moncton International	3,929	256	422	315	176	695	156	13	269	2
Montréal/Mirabel International	530	209	316	152	60	117	66	14	285	227
Montréal/Pierre Elliott Trudeau International	876	324	930	1,151	3,286	5,619	4,259	1,094	42	2,161
Montréal/St-Hubert	5,147	587	930	116	163	11	3	0	22	0
Oshawa	3,334	229	97	9	39	2	0	0	0	0
Ottawa/Macdonald-Cartier International	2,641	170	1,018	315	730	2,758	1,624	836	211	256
Pitt Meadows	3,468	55	86	8	5	0	2	0	0	0
Prince George	847	242	235	747	55	487	198	0	4	0
Québec/Jean Lesage International	3,006	665	966	322	1,485	1,603	23	9	2	40
Regina International	1,612	453	492	381	77	602	642	9	86	0
Saskatoon/John G. Diefenbaker International	1,681	522	808	688	293	788	743	38	42	0
Sault Ste. Marie	1,711	141	574	76	238	120	0	2	0	0
St. John's International	71	35	408	513	754	151	1,048	254	79	10
St-Jean	3,034	94	116	0	4	0	0	0	0	0
Sudbury	502	513	1,378	141	175	232	8	6	0	0
Thunder Bay	1,143	332	2,597	260	233	746	252	4	0	0
Toronto/Butterville Municipal	7,934	590	531	145	44	9	2	0	0	0
Toronto/City Centre	3,217	375	667	43	6	882	0	2	0	6
Toronto/Lester B. Pearson International	47	320	379	2,582	4,227	7,731	12,019	4,038	582	4,223
Vancouver Harbour	252	4,829	1,751	3	2	0	0	0	0	0
Vancouver International	1,442	4,870	1,215	3,222	3,077	4,298	6,536	1,772	404	2,465
Victoria International	4,275	1,193	307	458	1,249	907	549	62	42	0
Whitehorse International	1,289	319	192	76	136	131	268	4	0	16
Windsor	1,559	176	111	111	330	89	4	2	2	0
Winnipeg/James Armstrong Richardson International	896	1,016	3,993	523	871	1,969	2,598	452	752	45
Winnipeg/St. Andrews	3,058	532	190	0	6	18	0	0	0	0
Yellowknife	860	690	1,208	248	397	1,057	619	286	0	0
Total of NAV CANADA towers (42)	98,646	24,309	28,684	19,196	23,215	40,319	46,922	11,716	4,342	10,631

Table 6-2
Itinerant movements by aircraft weight group — NAV CANADA flight service stations

	Gross take-off weight in kilograms									
	2 000 and under	2 001 to 4 000	4 001 to 5 670	5 671 to 9 000	9 001 to 18 000	18 001 to 35 000	35 001 to 70 000	70 001 to 90 000	90 001 to 136 000	136 001 and over
	number									
Brandon Municipal	1,021	68	262	34	10	7	2	25	0	0
Campbell River	977	124	121	506	264	8	2	0	0	0
Castlegar	241	24	31	159	14	170	11	0	0	0
Charlottetown	702	249	88	24	245	283	110	0	0	0
Churchill	72	22	96	76	226	292	0	24	0	0
Cranbrook	370	85	57	301	23	122	2	0	0	0
Dawson Creek	413	43	56	133	102	0	0	0	0	0
Deer Lake	98	33	147	45	867	175	205	4	0	0
Fort McMurray	2,821	1,448	790	681	224	666	373	0	0	0
Fort Nelson	1,068	180	183	123	105	6	14	0	0	0
Fort St John	1,370	69	384	271	107	224	4	1	0	0
Fredericton International	793	177	298	233	160	428	10	16	0	0
Grande Prairie	1,333	335	585	411	33	415	125	0	0	0
High Level	925	233	535	355	4	143	89	0	0	0
Îles-de-la-Madeleine	6	42	141	10	75	112	2	2	0	0
Inuvik/Mike Zubko	773	54	1,010	207	29	46	120	0	0	0
Iqaluit	49	25	597	101	94	454	183	45	106	2
Kamloops	982	290	122	340	111	430	0	0	0	0
Kenora	407	189	729	212	42	26	2	7	0	0
Kingston	1,142	71	141	480	76	22	0	12	0	0
Kuujuuaq	152	82	604	0	117	70	83	8	32	0
Kuujuuarapik	52	8	176	0	170	80	0	2	0	0
La Grande Rivière	60	103	68	6	138	462	0	2	0	0
La Ronge	234	413	655	128	300	337	0	0	0	0
Lethbridge	1,020	311	428	439	14	2	0	0	0	0
Lloydminster	684	129	162	115	8	0	0	0	0	0
Medicine Hat	716	85	287	227	8	0	0	4	0	0
Mont-Joli	42	58	156	43	107	10	2	0	0	0
Nanaimo	1,334	399	71	89	134	221	0	0	0	0
Norman Wells	765	256	320	21	8	58	146	0	0	0
North Bay	1,120	226	357	104	207	72	10	4	2	0
Ottawa/Gatineau	997	153	258	4	6	12	0	4	0	0
Peace River	524	138	359	29	16	0	0	0	0	0
Penticton	1,329	80	38	170	57	154	0	0	0	0
Port Hardy	239	451	457	218	170	10	5	0	0	0
Prince Albert	271	166	276	302	335	337	0	4	0	0
Prince Rupert	122	115	46	47	93	137	0	0	0	0
Rankin Inlet	158	46	313	264	305	56	142	4	4	0
Red Deer Regional	1,581	209	408	63	39	4	2	4	0	0
Rouyn-Noranda	220	12	336	6	203	137	50	0	0	0
Saint John	470	193	222	273	139	365	68	2	0	0
Sept-Îles	744	404	401	151	610	156	2	2	0	0
Sioux Lookout	124	286	1,811	478	14	2	0	0	0	0
Smithers	326	103	147	227	117	118	0	0	0	0
St Anthony	43	36	230	12	73	0	0	0	0	0
St Catharines	2,503	212	43	34	16	11	0	2	0	0
Terrace	704	45	116	237	302	187	0	0	0	0
Thompson	336	828	1,443	35	263	339	0	0	0	0
Timmins	509	296	938	133	393	194	0	0	0	0
Val-D'or	550	126	368	21	290	189	13	2	82	0
Victoria Harbour	57	2,927	1,783	2	16	0	0	0	0	0
Wabush	79	60	73	50	406	67	0	0	0	0
Whitecourt	1,038	135	125	213	8	12	0	0	0	0
Williams Lake	385	103	68	421	14	0	17	2	0	0
Total of all flight service stations (54)	35,051	12,955	19,916	9,264	7,907	7,828	1,794	182	226	2

Table 7-1
Itinerant movements, domestic, transborder and international — NAV CANADA towers

	Total	Air carrier movements		Other commercial movements	Private movements	Government movements	
		Levels I to III and foreign	Levels IV to VI			Civil	Military
number							
Abbotsford							
Domestic	5,716	535	2,118	1,784	984	218	77
Transborder	80	14	15	0	51	0	0
Other international	0	0	0	0	0	0	0
Total	5,796	549	2,133	1,784	1,035	218	77
Boundary Bay							
Domestic	6,742	22	1,097	4,073	1,494	48	8
Transborder	62	0	0	26	36	0	0
Other international	0	0	0	0	0	0	0
Total	6,804	22	1,097	4,099	1,530	48	8
Calgary International							
Domestic	17,073	13,516	1,251	939	1,072	168	127
Transborder	3,404	3,024	46	28	298	2	6
Other international	509	496	0	0	6	0	7
Total	20,986	17,036	1,297	967	1,376	170	140
Calgary/Springbank							
Domestic	5,829	12	688	3,376	1,725	20	8
Transborder	79	0	7	5	67	0	0
Other international	2	0	0	0	2	0	0
Total	5,910	12	695	3,381	1,794	20	8
Chicoutimi/St-Honoré							
Domestic	2,472	15	1,140	990	285	2	40
Transborder	1	0	0	0	1	0	0
Other international	0	0	0	0	0	0	0
Total	2,473	15	1,140	990	286	2	40
Edmonton City Centre							
Domestic	6,356	1,736	793	1,699	1,568	449	111
Transborder	42	7	5	0	28	2	0
Other international	1	0	0	0	0	0	1
Total	6,399	1,743	798	1,699	1,596	451	112
Edmonton International							
Domestic	9,099	8,204	379	145	277	33	61
Transborder	1,075	1,001	6	2	57	0	9
Other international	100	94	0	2	2	0	2
Total	10,274	9,299	385	149	336	33	72
Edmonton/Villeneuve							
Domestic	1,429	5	179	688	513	4	40
Transborder	1	0	0	0	1	0	0
Other international	0	0	0	0	0	0	0
Total	1,430	5	179	688	514	4	40
Gander International							
Domestic	1,697	208	1,093	16	104	138	138
Transborder	418	102	0	13	240	1	62
Other international	497	133	1	22	259	1	81
Total	2,612	443	1,094	51	603	140	281
Halifax/Robert L Stanfield International							
Domestic	5,514	4,559	458	23	298	51	125
Transborder	1,175	998	50	1	100	0	26
Other international	390	242	108	1	16	3	20
Total	7,079	5,799	616	25	414	54	171
Hamilton							
Domestic	3,875	1,560	1,076	279	670	282	8
Transborder	650	484	13	11	139	3	0
Other international	141	133	0	2	6	0	0
Total	4,666	2,177	1,089	292	815	285	8

Table 7-1 – continued

Itinerant movements, domestic, transborder and international — NAV CANADA towers

	Total	Air carrier movements		Other commercial movements	Private movements	Government movements	
		Levels I to III and foreign	Levels IV to VI			Civil	Military
	number						
Kelowna							
Domestic	4,409	2,309	259	1,071	669	85	16
Transborder	340	247	10	2	81	0	0
Other international	1	1	0	0	0	0	0
Total	4,750	2,557	269	1,073	750	85	16
Kitchener/Waterloo							
Domestic	4,598	124	2,059	1,166	1,190	10	49
Transborder	535	300	68	5	162	0	0
Other international	0	0	0	0	0	0	0
Total	5,133	424	2,127	1,171	1,352	10	49
Langley							
Domestic	3,520	122	181	1,819	1,371	21	6
Transborder	11	0	0	0	11	0	0
Other international	9	1	0	0	8	0	0
Total	3,540	123	181	1,819	1,390	21	6
London							
Domestic	5,109	1,087	771	1,749	1,374	102	26
Transborder	465	263	6	3	183	0	10
Other international	3	3	0	0	0	0	0
Total	5,577	1,353	777	1,752	1,557	102	36
Moncton/Greater Moncton International							
Domestic	6,132	1,884	3,534	201	234	208	71
Transborder	91	62	1	0	26	2	0
Other international	10	8	0	0	1	1	0
Total	6,233	1,954	3,535	201	261	211	71
Montréal/Mirabel International							
Domestic	1,748	640	610	39	359	46	54
Transborder	214	208	0	1	2	0	3
Other international	14	11	0	0	3	0	0
Total	1,976	859	610	40	364	46	57
Montréal/Pierre Elliott Trudeau International							
Domestic	11,472	9,133	706	303	1,073	224	33
Transborder	6,103	5,142	50	64	844	0	3
Other international	2,167	1,954	18	21	169	1	4
Total	19,742	16,229	774	388	2,086	225	40
Montréal/St-Hubert							
Domestic	6,733	2,123	579	2,108	1,630	147	146
Transborder	246	24	2	7	208	5	0
Other international	0	0	0	0	0	0	0
Total	6,979	2,147	581	2,115	1,838	152	146
Oshawa							
Domestic	3,598	149	127	2,010	1,305	4	3
Transborder	112	43	2	6	61	0	0
Other international	0	0	0	0	0	0	0
Total	3,710	192	129	2,016	1,366	4	3
Ottawa/Macdonald-Cartier International							
Domestic	8,364	4,690	408	2,154	442	513	157
Transborder	2,073	1,879	15	11	139	21	8
Other international	122	89	8	2	11	1	11
Total	10,559	6,658	431	2,167	592	535	176
Pitt Meadows							
Domestic	3,615	56	939	1,171	1,407	16	26
Transborder	9	0	0	0	9	0	0
Other international	0	0	0	0	0	0	0
Total	3,624	56	939	1,171	1,416	16	26

Table 7-1 – continued

Itinerant movements, domestic, transborder and international — NAV CANADA towers

	Total	Air carrier movements		Other commercial movements	Private movements	Government movements	
		Levels I to III and foreign	Levels IV to VI			Civil	Military
number							
Prince George							
Domestic	2,783	1,454	457	138	551	152	31
Transborder	32	0	1	0	27	2	2
Other international	0	0	0	0	0	0	0
Total	2,815	1,454	458	138	578	154	33
Québec/Jean Lesage International							
Domestic	7,468	3,346	668	1,801	1,103	366	184
Transborder	626	500	5	12	105	1	3
Other international	27	23	0	0	3	0	1
Total	8,121	3,869	673	1,813	1,211	367	188
Regina International							
Domestic	4,136	1,871	1,004	81	648	259	273
Transborder	218	130	4	1	78	4	1
Other international	0	0	0	0	0	0	0
Total	4,354	2,001	1,008	82	726	263	274
Saskatoon/John G Diefenbaker International							
Domestic	5,407	2,806	1,010	389	564	339	299
Transborder	195	130	1	2	55	3	4
Other international	1	1	0	0	0	0	0
Total	5,603	2,937	1,011	391	619	342	303
Sault Ste. Marie							
Domestic	2,810	847	159	1,407	305	43	49
Transborder	52	3	3	5	41	0	0
Other international	0	0	0	0	0	0	0
Total	2,862	850	162	1,412	346	43	49
St. John's International							
Domestic	2,853	1,340	1,108	69	86	164	86
Transborder	203	73	0	9	48	1	72
Other international	267	116	2	17	53	0	79
Total	3,323	1,529	1,110	95	187	165	237
St-Jean							
Domestic	3,245	142	195	332	1,442	36	1,098
Transborder	3	0	0	0	3	0	0
Other international	0	0	0	0	0	0	0
Total	3,248	142	195	332	1,445	36	1,098
Sudbury							
Domestic	2,934	1,510	863	86	306	119	50
Transborder	21	1	0	2	16	2	0
Other international	0	0	0	0	0	0	0
Total	2,955	1,511	863	88	322	121	50
Thunder Bay							
Domestic	5,330	2,830	1,231	630	364	151	124
Transborder	235	133	5	2	95	0	0
Other international	2	1	0	1	0	0	0
Total	5,567	2,964	1,236	633	459	151	124
Toronto/Buttonville Municipal							
Domestic	8,832	459	651	5,198	2,421	102	1
Transborder	421	107	48	15	249	2	0
Other international	2	0	0	0	2	0	0
Total	9,255	566	699	5,213	2,672	104	1
Toronto/City Centre							
Domestic	4,942	1,074	1,310	1,753	736	31	38
Transborder	256	20	27	6	203	0	0
Other international	0	0	0	0	0	0	0
Total	5,198	1,094	1,337	1,759	939	31	38

Table 7-1 – continued

Itinerant movements, domestic, transborder and international — NAV CANADA towers

	Total	Air carrier movements		Other commercial movements	Private movements	Government movements	
		Levels I to III and foreign	Levels IV to VI			Civil	Military
	number						
Toronto/Lester B Pearson International							
Domestic	17,159	16,129	364	85	511	50	20
Transborder	15,096	13,987	76	70	957	4	2
Other international	3,893	3,841	18	7	27	0	0
Total	36,148	33,957	458	162	1,495	54	22
Vancouver Harbour							
Domestic	6,690	5,954	371	133	226	2	4
Transborder	147	91	10	1	45	0	0
Other international	0	0	0	0	0	0	0
Total	6,837	6,045	381	134	271	2	4
Vancouver International							
Domestic	21,472	18,124	1,923	271	823	316	15
Transborder	6,144	5,633	19	6	476	3	7
Other international	1,685	1,576	77	4	23	5	0
Total	29,301	25,333	2,019	281	1,322	324	22
Victoria International							
Domestic	8,079	2,901	2,821	634	1,497	38	188
Transborder	909	432	67	4	403	0	3
Other international	54	2	17	8	26	0	1
Total	9,042	3,335	2,905	646	1,926	38	192
Whitehorse International							
Domestic	2,208	728	876	12	527	43	22
Transborder	213	12	8	2	183	4	4
Other international	10	8	0	2	0	0	0
Total	2,431	748	884	16	710	47	26
Windsor							
Domestic	2,263	529	1,198	110	398	19	9
Transborder	118	25	13	3	73	1	3
Other international	3	0	1	1	1	0	0
Total	2,384	554	1,212	114	472	20	12
Winnipeg/James Armstrong Richardson International							
Domestic	11,674	8,950	1,137	111	431	389	656
Transborder	1,419	1,127	10	10	247	1	24
Other international	22	19	0	0	3	0	0
Total	13,115	10,096	1,147	121	681	390	680
Winnipeg/St. Andrews							
Domestic	3,800	569	1,717	1,076	432	2	4
Transborder	4	1	0	1	2	0	0
Other international	0	0	0	0	0	0	0
Total	3,804	570	1,717	1,077	434	2	4
Yellowknife							
Domestic	5,357	3,934	881	21	286	158	77
Transborder	5	2	0	0	3	0	0
Other international	3	1	0	0	1	0	1
Total	5,365	3,937	881	21	290	158	78
Total of NAV CANADA towers (42)							
Domestic	254,542	128,186	40,389	42,140	33,701	5,568	4,558
Transborder	43,503	36,205	593	336	6,053	64	252
Other international	9,935	8,753	250	90	622	12	208
Total	307,980	173,144	41,232	42,566	40,376	5,644	5,018

Table 7-2
Itinerant movements, domestic, transborder and international — NAV CANADA flight service stations

	Total	Air carrier movements		Other commercial movements	Private movements	Government movements	
		Levels I to III and foreign	Levels IV to VI			Civil	Military
number							
Brandon Municipal							
Domestic	1,415	116	371	97	444	10	377
Transborder	14	0	1	0	13	0	0
Other international	0	0	0	0	0	0	0
Total	1,429	116	372	97	457	10	377
Campbell River							
Domestic	1,883	742	273	275	540	31	22
Transborder	119	6	0	0	112	0	1
Other international	0	0	0	0	0	0	0
Total	2,002	748	273	275	652	31	23
Castlegar							
Domestic	631	335	154	41	82	6	13
Transborder	19	0	0	0	18	0	1
Other international	0	0	0	0	0	0	0
Total	650	335	154	41	100	6	14
Charlottetown							
Domestic	1,681	781	200	413	196	53	38
Transborder	19	7	0	1	11	0	0
Other international	1	0	0	0	1	0	0
Total	1,701	788	200	414	208	53	38
Churchill							
Domestic	807	688	45	5	38	11	20
Transborder	1	0	0	0	1	0	0
Other international	0	0	0	0	0	0	0
Total	808	688	45	5	39	11	20
Cranbrook							
Domestic	928	496	61	150	198	8	15
Transborder	32	3	1	2	26	0	0
Other international	0	0	0	0	0	0	0
Total	960	499	62	152	224	8	15
Dawson Creek							
Domestic	747	269	129	188	142	19	0
Transborder	0	0	0	0	0	0	0
Other international	0	0	0	0	0	0	0
Total	747	269	129	188	142	19	0
Deer Lake							
Domestic	1,565	877	536	35	23	66	28
Transborder	2	0	0	0	2	0	0
Other international	7	6	0	1	0	0	0
Total	1,574	883	536	36	25	66	28
Fort McMurray							
Domestic	6,999	3,429	2,201	579	719	64	7
Transborder	4	1	0	0	3	0	0
Other international	0	0	0	0	0	0	0
Total	7,003	3,430	2,201	579	722	64	7
Fort Nelson							
Domestic	1,678	322	557	454	328	8	9
Transborder	1	0	0	0	1	0	0
Other international	0	0	0	0	0	0	0
Total	1,679	322	557	454	329	8	9
Fort St John							
Domestic	2,428	832	967	170	426	30	3
Transborder	2	0	0	0	2	0	0
Other international	0	0	0	0	0	0	0
Total	2,430	832	967	170	428	30	3

Table 7-2 – continued

Itinerant movements, domestic, transborder and international — NAV CANADA flight service stations

	Total	Air carrier movements		Other commercial movements	Private movements	Government movements	
		Levels I to III and foreign	Levels IV to VI			Civil	Military
number							
Fredericton International							
Domestic	1,970	705	620	28	219	151	247
Transborder	144	71	5	0	42	0	26
Other international	1	0	0	0	1	0	0
Total	2,115	776	625	28	262	151	273
Grande Prairie							
Domestic	3,233	1,283	897	77	763	53	160
Transborder	4	0	0	0	4	0	0
Other international	0	0	0	0	0	0	0
Total	3,237	1,283	897	77	767	53	160
High Level							
Domestic	2,284	661	1,454	19	109	6	35
Transborder	0	0	0	0	0	0	0
Other international	0	0	0	0	0	0	0
Total	2,284	661	1,454	19	109	6	35
Îles-de-la-Madeleine							
Domestic	385	287	18	9	10	39	22
Transborder	1	0	0	0	1	0	0
Other international	4	4	0	0	0	0	0
Total	390	291	18	9	11	39	22
Inuvik/Mike Zubko							
Domestic	2,238	596	1,566	0	38	34	4
Transborder	1	0	0	0	1	0	0
Other international	0	0	0	0	0	0	0
Total	2,239	596	1,566	0	39	34	4
Iqaluit							
Domestic	1,467	1,220	67	51	46	37	46
Transborder	74	38	13	3	20	0	0
Other international	115	49	4	8	46	0	8
Total	1,656	1,307	84	62	112	37	54
Kamloops							
Domestic	2,230	822	400	491	398	100	19
Transborder	45	4	1	1	39	0	0
Other international	0	0	0	0	0	0	0
Total	2,275	826	401	492	437	100	19
Kenora							
Domestic	1,429	398	426	234	147	188	36
Transborder	185	13	1	0	171	0	0
Other international	0	0	0	0	0	0	0
Total	1,614	411	427	234	318	188	36
Kingston							
Domestic	1,882	533	319	445	437	54	94
Transborder	62	11	1	0	46	0	4
Other international	0	0	0	0	0	0	0
Total	1,944	544	320	445	483	54	98
Kuujuuaq							
Domestic	1,146	823	177	6	57	20	63
Transborder	0	0	0	0	0	0	0
Other international	2	0	1	0	1	0	0
Total	1,148	823	178	6	58	20	63
Kuujuarapik							
Domestic	488	413	61	4	4	4	2
Transborder	0	0	0	0	0	0	0
Other international	0	0	0	0	0	0	0
Total	488	413	61	4	4	4	2
La Grande Rivière							
Domestic	839	572	131	70	42	16	8
Transborder	0	0	0	0	0	0	0
Other international	0	0	0	0	0	0	0
Total	839	572	131	70	42	16	8

Table 7-2 – continued

Itinerant movements, domestic, transborder and international — NAV CANADA flight service stations

	Total	Air carrier movements		Other commercial movements	Private movements	Government movements	
		Levels I to III and foreign	Levels IV to VI			Civil	Military
number							
La Ronge							
Domestic	2,046	1,382	61	64	149	232	158
Transborder	21	3	0	0	18	0	0
Other international	0	0	0	0	0	0	0
Total	2,067	1,385	61	64	167	232	158
Lethbridge							
Domestic	2,107	484	58	1,139	366	12	48
Transborder	107	13	1	7	86	0	0
Other international	0	0	0	0	0	0	0
Total	2,214	497	59	1,146	452	12	48
Lloydminster							
Domestic	1,098	176	392	60	430	24	16
Transborder	0	0	0	0	0	0	0
Other international	0	0	0	0	0	0	0
Total	1,098	176	392	60	430	24	16
Medicine Hat							
Domestic	1,309	737	112	50	365	14	31
Transborder	18	7	0	0	10	0	1
Other international	0	0	0	0	0	0	0
Total	1,327	744	112	50	375	14	32
Mont-Joli							
Domestic	417	326	10	23	29	14	15
Transborder	1	0	0	0	1	0	0
Other international	0	0	0	0	0	0	0
Total	418	326	10	23	30	14	15
Nanaimo							
Domestic	2,128	454	681	105	857	28	3
Transborder	120	2	4	1	111	0	2
Other international	0	0	0	0	0	0	0
Total	2,248	456	685	106	968	28	5
Norman Wells							
Domestic	1,574	849	581	1	113	20	10
Transborder	0	0	0	0	0	0	0
Other international	0	0	0	0	0	0	0
Total	1,574	849	581	1	113	20	10
North Bay							
Domestic	2,047	534	337	513	540	85	38
Transborder	55	3	0	0	51	1	0
Other international	0	0	0	0	0	0	0
Total	2,102	537	337	513	591	86	38
Ottawa/Gatineau							
Domestic	1,427	154	249	265	591	139	29
Transborder	7	1	0	0	6	0	0
Other international	0	0	0	0	0	0	0
Total	1,434	155	249	265	597	139	29
Peace River							
Domestic	1,066	410	439	14	167	36	0
Transborder	0	0	0	0	0	0	0
Other international	0	0	0	0	0	0	0
Total	1,066	410	439	14	167	36	0
Penticton							
Domestic	1,772	310	691	111	527	27	106
Transborder	56	0	0	0	55	0	1
Other international	0	0	0	0	0	0	0
Total	1,828	310	691	111	582	27	107

Table 7-2 – continued

Itinerant movements, domestic, transborder and international — NAV CANADA flight service stations

	Total	Air carrier movements		Other commercial movements	Private movements	Government movements	
		Levels I to III and foreign	Levels IV to VI			Civil	Military
number							
Port Hardy							
Domestic	1,454	1,010	122	15	129	117	61
Transborder	95	0	0	0	95	0	0
Other international	1	1	0	0	0	0	0
Total	1,550	1,011	122	15	224	117	61
Prince Albert							
Domestic	1,687	1,103	99	92	169	173	51
Transborder	4	0	0	0	3	1	0
Other international	0	0	0	0	0	0	0
Total	1,691	1,103	99	92	172	174	51
Prince Rupert							
Domestic	499	260	117	5	83	34	0
Transborder	60	1	1	0	56	0	2
Other international	1	0	0	0	1	0	0
Total	560	261	118	5	140	34	2
Rankin Inlet							
Domestic	1,292	1,113	155	2	8	6	8
Transborder	0	0	0	0	0	0	0
Other international	0	0	0	0	0	0	0
Total	1,292	1,113	155	2	8	6	8
Red Deer Regional							
Domestic	2,295	259	1,129	199	645	27	36
Transborder	15	3	2	0	10	0	0
Other international	0	0	0	0	0	0	0
Total	2,310	262	1,131	199	655	27	36
Rouyn-Noranda							
Domestic	964	537	138	95	175	17	2
Transborder	0	0	0	0	0	0	0
Other international	0	0	0	0	0	0	0
Total	964	537	138	95	175	17	2
Saint John							
Domestic	1,577	828	187	141	335	10	76
Transborder	150	5	2	3	139	0	1
Other international	5	0	0	0	5	0	0
Total	1,732	833	189	144	479	10	77
Sept-Îles							
Domestic	2,425	1,281	722	96	182	130	14
Transborder	41	6	0	0	35	0	0
Other international	4	0	0	0	4	0	0
Total	2,470	1,287	722	96	221	130	14
Sioux Lookout							
Domestic	2,639	1,566	903	33	90	25	22
Transborder	76	5	0	0	71	0	0
Other international	0	0	0	0	0	0	0
Total	2,715	1,571	903	33	161	25	22
Smithers							
Domestic	1,030	567	207	4	216	34	2
Transborder	8	0	0	0	8	0	0
Other international	0	0	0	0	0	0	0
Total	1,038	567	207	4	224	34	2
St Anthony							
Domestic	394	43	226	72	47	6	0
Transborder	0	0	0	0	0	0	0
Other international	0	0	0	0	0	0	0
Total	394	43	226	72	47	6	0

Table 7-2 – continued

Itinerant movements, domestic, transborder and international — NAV CANADA flight service stations

	Total	Air carrier movements		Other commercial movements	Private movements	Government movements	
		Levels I to III and foreign	Levels IV to VI			Civil	Military
number							
St Catharines							
Domestic	2,718	15	908	94	1,309	29	363
Transborder	103	12	10	1	80	0	0
Other international	0	0	0	0	0	0	0
Total	2,821	27	918	95	1,389	29	363
Terrace							
Domestic	1,589	723	691	6	108	59	2
Transborder	2	1	0	0	1	0	0
Other international	0	0	0	0	0	0	0
Total	1,591	724	691	6	109	59	2
Thompson							
Domestic	3,241	2,216	667	38	47	227	46
Transborder	3	1	0	0	2	0	0
Other international	0	0	0	0	0	0	0
Total	3,244	2,217	667	38	49	227	46
Timmins							
Domestic	2,459	1,671	280	67	321	114	6
Transborder	4	2	0	0	2	0	0
Other international	0	0	0	0	0	0	0
Total	2,463	1,673	280	67	323	114	6
Val-D'or							
Domestic	1,639	703	312	296	252	66	10
Transborder	2	0	0	0	1	1	0
Other international	0	0	0	0	0	0	0
Total	1,641	703	312	296	253	67	10
Victoria Harbour							
Domestic	4,404	4,058	107	87	66	64	22
Transborder	381	0	0	0	381	0	0
Other international	0	0	0	0	0	0	0
Total	4,785	4,058	107	87	447	64	22
Wabush							
Domestic	730	348	268	10	66	34	4
Transborder	5	0	0	0	5	0	0
Other international	0	0	0	0	0	0	0
Total	735	348	268	10	71	34	4
Whitecourt							
Domestic	1,528	75	1,108	184	132	17	12
Transborder	3	0	1	0	2	0	0
Other international	0	0	0	0	0	0	0
Total	1,531	75	1,109	184	134	17	12
Williams Lake							
Domestic	1,002	387	253	41	293	20	8
Transborder	8	0	0	0	8	0	0
Other international	0	0	0	0	0	0	0
Total	1,010	387	253	41	301	20	8
Total of all flight service stations (54)							
Domestic	92,910	41,779	23,840	7,763	14,213	2,848	2,467
Transborder	2,074	219	44	19	1,750	3	39
Other international	141	60	5	9	59	0	8
Total	95,125	42,058	23,889	7,791	16,022	2,851	2,514

Table 8-1
Total aircraft movements, peak hour and peak day — NAV CANADA towers

	Rank of movements	Number of movements	Peak hour occurrence			Peak day occurrence	
			Day in month	Hour in day	Number of movements	Day in month	Number of movements
Abbotsford	12	13,908	11	9	96	14	723
Boundary Bay	6	17,242	23	12	132	14	808
Calgary International	3	21,230	20	17	71	20	890
Calgary/Springbank	7	15,672	11	9	113	7	866
Chicoutimi/St-Honoré	33	5,525	4	9	102	1	489
Edmonton City Centre	23	8,009	6	13	61	4	390
Edmonton International	15	10,716	22	10	48	22	472
Edmonton/Villeneuve	34	4,783	25	11	61	9	302
Gander International	38	3,718	14	13	39	14	261
Halifax/Robert L Stanfield International	27	7,608	6	17	62	6	386
Hamilton	25	7,928	17	12	75	16	447
Kelowna	24	7,972	28	18	58	28	403
Kitchener/Waterloo	14	10,885	27	9	100	25	631
Langley	19	9,932	26	9	86	26	556
London	22	8,757	25	9	69	29	440
Moncton/Greater Moncton International	13	11,726	26	18	64	1	625
Montréal/Mirabel International	42	2,423	13	11	32	13	163
Montréal/Pierre Elliott Trudeau International	4	19,742	7	18	66	8	761
Montréal/St-Hubert	11	14,347	2	10	124	7	781
Oshawa	28	7,472	28	10	70	7	428
Ottawa/Macdonald-Cartier International	8	15,333	1	12	79	7	705
Pitt Meadows	17	10,582	19	17	92	2	634
Prince George	36	3,917	9	13	47	3	213
Québec/Jean Lesage International	16	10,707	23	11	63	13	518
Regina International	31	6,518	1	18	43	20	352
Saskatoon/John G Diefenbaker International	21	8,773	20	14	75	20	612
Sault Ste. Marie	32	6,384	20	17	53	12	372
St. John's International	39	3,541	30	17	24	30	183
St-Jean	37	3,842	21	10	65	21	273
Sudbury	40	3,346	28	10	32	6	166
Thunder Bay	26	7,706	11	11	58	12	463
Toronto/Buttrickville Municipal	5	19,611	9	14	114	15	1,090
Toronto/City Centre	20	9,634	16	13	78	9	477
Toronto/Lester B Pearson International	1	36,148	22	18	104	14	1,317
Vancouver Harbour	29	6,849	11	7	35	27	326
Vancouver International	2	29,301	15	17	98	29	1,123
Victoria International	9	15,062	7	16	94	12	697
Whitehorse International	41	3,281	27	8	29	20	180
Windsor	35	4,526	9	11	54	11	235
Winnipeg/James Armstrong Richardson International	10	14,623	6	9	97	5	698
Winnipeg/St. Andrews	18	9,974	2	10	87	28	655
Yellowknife	30	6,533	15	16	49	26	320

Table 8-2
Total aircraft movements, peak hour and peak day — NAV CANADA flight service stations

	Rank of movements	Number of movements	Peak hour occurrence			Peak day occurrence	
			Day in month	Hour in day	Number of movements	Day in month	Number of movements
Brandon Municipal	29	1,831	2	10	53	2	217
Campbell River	17	2,620	14	12	42	14	210
Castlegar	46	880	15	12	26	15	67
Charlottetown	25	2,197	1	12	23	8	169
Churchill	48	822	20	17	10	26	45
Cranbrook	42	1,155	19	19	18	12	72
Dawson Creek	40	1,283	3	12	25	1	88
Deer Lake	35	1,662	24	19	22	18	89
Fort McMurray	1	8,055	26	14	56	14	379
Fort Nelson	30	1,789	26	11	31	26	137
Fort St John	12	2,959	6	19	30	20	163
Fredericton International	21	2,365	7	20	41	7	197
Grande Prairie	4	4,197	20	14	40	20	248
High Level	20	2,372	2	10	62	15	204
Îles-de-la-Madeleine	54	394	5	16	11	5	25
Inuvik/Mike Zubko	19	2,410	6	18	31	20	124
Iqaluit	32	1,782	11	18	23	11	143
Kamloops	7	3,777	3	11	44	3	222
Kenora	33	1,752	22	10	26	5	119
Kingston	9	3,163	23	11	47	9	172
Kuujuuaq	39	1,298	8	13	23	8	132
Kuujuuarapik	51	490	28	11	8	28	26
La Grande Rivière	47	845	11	10	9	26	44
La Ronge	22	2,313	14	11	26	14	136
Lethbridge	14	2,908	5	10	31	26	208
Lloydminster	36	1,616	24	9	33	14	116
Medicine Hat	24	2,261	10	18	52	10	181
Mont-Joli	52	418	26	18	8	26	26
Nanaimo	11	2,970	3	11	59	20	177
Norman Wells	28	1,876	16	17	23	21	136
North Bay	5	3,962	8	11	49	25	240
Ottawa/Gatineau	16	2,796	6	14	58	6	277
Peace River	43	1,130	21	15	19	21	64
Penticton	13	2,938	14	15	56	15	167
Port Hardy	37	1,564	12	13	19	12	102
Prince Albert	31	1,783	12	13	19	12	113
Prince Rupert	50	590	13	10	16	13	52
Rankin Inlet	38	1,302	7	20	12	7	92
Red Deer Regional	6	3,846	7	9	40	7	248
Rouyn-Noranda	44	1,110	2	15	26	11	109
Saint John	27	2,134	20	9	24	15	156
Sept-Îles	10	2,996	9	13	47	26	152
Sioux Lookout	15	2,803	16	17	22	20	136
Smithers	41	1,185	25	9	32	25	82
St Anthony	53	396	8	14	6	8	21
St Catharines	3	4,747	9	10	84	9	507
Terrace	34	1,749	16	9	31	11	119
Thompson	8	3,334	7	14	22	21	150
Timmins	18	2,609	16	10	37	16	180
Val-D'or	26	2,147	7	15	37	14	174
Victoria Harbour	2	4,785	21	17	26	1	216
Wabush	49	809	7	18	23	7	72
Whitecourt	23	2,309	12	14	50	12	162
Williams Lake	45	1,100	9	21	24	9	63

Table 9-1
Itinerant aircraft movements, peak hour and peak day — NAV CANADA towers

	Rank of movements	Number of movements	Peak hour occurrence			Peak day occurrence	
			Day in month	Hour in day	Number of movements	Day in month	Number of movements
Abbotsford	18	5,796	20	16	42	12	322
Boundary Bay	14	6,804	19	15	49	20	399
Calgary International	3	20,986	20	17	71	20	842
Calgary/Springbank	17	5,910	2	9	43	20	352
Chicoutimi/St-Honoré	38	2,473	24	15	31	7	202
Edmonton City Centre	15	6,399	24	15	34	27	309
Edmonton International	7	10,274	5	18	36	6	415
Edmonton/Villeneuve	42	1,430	9	11	23	9	116
Gander International	37	2,612	28	14	18	11	149
Halifax/Robert L Stanfield International	11	7,079	6	17	36	29	281
Hamilton	26	4,666	11	18	25	14	202
Kelowna	25	4,750	16	10	27	20	214
Kitchener/Waterloo	24	5,133	10	11	32	9	276
Langley	31	3,540	23	12	27	26	184
London	20	5,577	16	10	33	6	240
Moncton/Greater Moncton International	16	6,233	27	9	30	8	347
Montréal/Mirabel International	41	1,976	29	13	25	29	112
Montréal/Pierre Elliott Trudeau International	4	19,742	7	18	66	8	761
Montréal/St-Hubert	12	6,979	29	14	41	7	373
Oshawa	29	3,710	9	10	49	23	300
Ottawa/Macdonald-Cartier International	6	10,559	7	9	41	14	472
Pitt Meadows	30	3,624	2	13	29	2	234
Prince George	36	2,815	27	17	20	21	123
Québec/Jean Lesage International	10	8,121	13	14	39	18	371
Regina International	27	4,354	12	18	21	27	210
Saskatoon/John G Diefenbaker International	19	5,603	21	11	27	22	254
Sault Ste. Marie	35	2,862	20	15	19	15	146
St. John's International	32	3,323	20	17	19	4	151
St-Jean	33	3,248	28	12	52	20	252
Sudbury	34	2,955	28	17	20	14	138
Thunder Bay	21	5,567	14	16	26	12	267
Toronto/Buttonville Municipal	8	9,255	15	14	53	15	512
Toronto/City Centre	23	5,198	30	14	33	7	238
Toronto/Lester B Pearson International	1	36,148	22	18	104	14	1,317
Vancouver Harbour	13	6,837	11	7	35	27	320
Vancouver International	2	29,301	15	17	98	29	1,123
Victoria International	9	9,042	12	15	42	8	397
Whitehorse International	39	2,431	26	15	20	20	128
Windsor	40	2,384	2	11	26	6	117
Winnipeg/James Armstrong Richardson International	5	13,115	21	13	49	21	536
Winnipeg/St. Andrews	28	3,804	28	17	27	28	193
Yellowknife	22	5,365	1	14	24	1	243

Table 9-2
Itinerant aircraft movements, peak hour and peak day — NAV CANADA flight service stations

	Rank of movements	Number of movements	Peak hour occurrence			Peak day occurrence	
			Day in month	Hour in day	Number of movements	Day in month	Number of movements
Brandon Municipal	35	1,429	2	10	31	2	183
Campbell River	19	2,002	27	13	17	1	116
Castlegar	49	650	8	13	14	15	43
Charlottetown	23	1,701	20	17	14	8	89
Churchill	46	808	6	11	9	29	43
Cranbrook	44	960	28	11	8	27	49
Dawson Creek	47	747	20	15	10	2	46
Deer Lake	31	1,574	28	8	12	20	80
Fort McMurray	1	7,003	28	18	33	6	305
Fort Nelson	25	1,679	26	12	14	26	113
Fort St John	9	2,430	20	9	28	20	140
Fredericton International	16	2,115	17	15	23	7	107
Grande Prairie	4	3,237	4	17	22	4	185
High Level	11	2,284	15	17	19	15	204
Îles-de-la-Madeleine	54	390	5	16	7	5	21
Inuvik/Mike Zubko	14	2,239	21	15	14	20	124
Iqaluit	26	1,656	4	12	12	22	86
Kamloops	12	2,275	3	10	16	1	116
Kenora	28	1,614	1	9	17	5	119
Kingston	20	1,944	27	18	18	9	108
Kuujuuaq	38	1,148	24	14	9	8	58
Kuujuuarapik	51	488	28	11	8	28	26
La Grande Rivière	45	839	11	10	9	22	41
La Ronge	18	2,067	21	15	17	14	108
Lethbridge	15	2,214	5	10	23	26	174
Lloydminster	39	1,098	27	15	14	27	72
Medicine Hat	36	1,327	7	12	19	19	90
Mont-Joli	52	418	26	18	8	26	26
Nanaimo	13	2,248	2	10	22	20	139
Norman Wells	30	1,574	21	19	17	21	130
North Bay	17	2,102	2	10	29	14	107
Ottawa/Gatineau	34	1,434	2	11	21	2	106
Peace River	40	1,066	2	13	12	22	54
Penticton	21	1,828	23	10	20	12	85
Port Hardy	32	1,550	12	13	19	12	100
Prince Albert	24	1,691	18	14	12	4	84
Prince Rupert	50	560	13	10	16	13	46
Rankin Inlet	37	1,292	20	13	12	7	84
Red Deer Regional	10	2,310	1	11	31	1	159
Rouyn-Noranda	43	964	2	11	9	11	55
Saint John	22	1,732	21	16	21	25	102
Sept-Îles	7	2,470	12	11	16	14	125
Sioux Lookout	6	2,715	20	11	20	27	135
Smithers	41	1,038	21	11	14	21	61
St Anthony	53	394	8	14	6	15	20
St Catharines	5	2,821	9	15	44	9	379
Terrace	29	1,591	7	15	17	7	108
Thompson	3	3,244	19	8	16	21	150
Timmins	8	2,463	16	10	37	16	180
Val-D'or	27	1,641	14	10	20	14	130
Victoria Harbour	2	4,785	21	17	26	1	216
Wabush	48	735	11	11	9	19	37
Whitecourt	33	1,531	2	15	24	2	103
Williams Lake	42	1,010	21	7	8	21	57

Table 10-1
Local movements, peak hour and peak day — NAV CANADA towers

	Rank of movements	Number of movements	Peak hour occurrence			Peak day occurrence	
			Day in month	Hour in day	Number of movements	Day in month	Number of movements
Abbotsford	4	8,112	11	9	74	13	448
Boundary Bay	1	10,438	23	12	104	14	482
Calgary International	37	244	20	10	16	20	48
Calgary/Springbank	3	9,762	11	9	86	7	578
Chicoutimi/St-Honoré	21	3,052	1	9	90	1	343
Edmonton City Centre	26	1,610	6	13	36	4	128
Edmonton International	35	442	22	10	22	22	78
Edmonton/Villeneuve	16	3,353	25	11	54	3	216
Gander International	29	1,106	14	22	30	14	146
Halifax/Robert L Stanfield International	33	529	6	17	26	6	111
Hamilton	17	3,262	17	12	50	16	246
Kelowna	18	3,222	28	17	40	28	216
Kitchener/Waterloo	10	5,752	27	9	86	25	402
Langley	7	6,392	26	9	78	26	372
London	19	3,180	11	11	44	29	216
Moncton/Greater Moncton International	11	5,493	26	18	50	1	336
Montréal/Mirabel International	34	447	30	9	28	13	74
Montréal/Pierre Elliott Trudeau International	0	0	0	0	0	0	0
Montréal/St-Hubert	5	7,368	2	10	98	28	412
Oshawa	14	3,762	28	10	54	7	274
Ottawa/Macdonald-Cartier International	12	4,774	1	12	46	7	282
Pitt Meadows	6	6,958	19	17	68	1	438
Prince George	30	1,102	9	13	40	2	142
Québec/Jean Lesage International	22	2,586	23	11	40	13	160
Regina International	23	2,164	9	15	31	20	154
Saskatoon/John G Diefenbaker International	20	3,170	19	9	54	20	360
Sault Ste. Marie	15	3,522	20	17	44	12	240
St. John's International	38	218	30	17	20	30	70
St-Jean	32	594	21	10	28	25	50
Sudbury	36	391	30	12	28	30	68
Thunder Bay	25	2,139	27	13	42	12	196
Toronto/Buttonville Municipal	2	10,356	9	14	74	15	578
Toronto/City Centre	13	4,436	16	13	60	25	274
Toronto/Lester B Pearson International	0	0	0	0	0	0	0
Vancouver Harbour	39	12	27	11	6	27	6
Vancouver International	0	0	0	0	0	0	0
Victoria International	9	6,020	7	16	64	12	320
Whitehorse International	31	850	3	14	20	3	84
Windsor	24	2,142	9	11	40	11	142
Winnipeg/James Armstrong Richardson International	27	1,508	6	9	52	5	184
Winnipeg/St. Andrews	8	6,170	23	9	72	28	462
Yellowknife	28	1,168	26	10	30	26	106

Table 10-2
Local movements, peak hour and peak day — NAV CANADA flight service stations

	Rank of movements	Number of movements	Peak hour occurrence			Peak day occurrence	
			Day in month	Hour in day	Number of movements	Day in month	Number of movements
Brandon Municipal	22	402	28	10	30	28	60
Campbell River	14	618	14	12	32	14	94
Castlegar	26	230	6	12	24	4	36
Charlottetown	20	496	1	12	16	8	80
Churchill	47	14	19	22	4	19	4
Cranbrook	27	195	19	19	14	12	26
Dawson Creek	15	536	3	12	24	3	72
Deer Lake	42	88	24	19	16	26	26
Fort McMurray	8	1,052	25	20	38	14	80
Fort Nelson	36	110	26	11	24	19	46
Fort St John	16	529	16	10	24	18	48
Fredericton International	24	250	7	20	36	7	90
Grande Prairie	9	960	20	14	26	20	106
High Level	41	88	2	10	60	2	66
Îles-de-la-Madeleine	50	4	5	16	4	5	4
Inuvik/Mike Zubko	28	171	6	18	24	5	38
Iqaluit	35	126	11	18	20	11	74
Kamloops	4	1,502	3	11	36	10	118
Kenora	34	138	22	10	18	1	32
Kingston	6	1,219	23	11	40	30	92
Kuujuuaq	30	150	8	13	20	8	74
Kuujuuarapik	51	2	20	19	2	20	2
La Grande Rivière	49	6	26	10	4	26	4
La Ronge	25	246	12	17	18	1	28
Lethbridge	13	694	7	14	26	4	80
Lloydminster	18	518	24	9	28	7	56
Medicine Hat	10	934	10	18	44	10	128
Mont-Joli	0	0	0	0	0	0	0
Nanaimo	12	722	3	11	48	3	56
Norman Wells	23	302	16	17	16	1	42
North Bay	2	1,860	25	15	38	25	158
Ottawa/Gatineau	5	1,362	6	14	40	6	188
Peace River	44	64	13	14	12	13	20
Penticton	7	1,110	14	15	48	15	82
Port Hardy	46	14	2	13	4	2	4
Prince Albert	37	92	12	13	14	12	36
Prince Rupert	45	30	30	12	7	30	12
Rankin Inlet	48	10	7	20	6	7	8
Red Deer Regional	3	1,536	12	10	26	7	102
Rouyn-Noranda	33	146	2	15	24	11	54
Saint John	21	402	29	8	22	15	70
Sept-Îles	17	526	9	13	42	9	72
Sioux Lookout	40	88	21	20	18	9	22
Smithers	31	147	25	9	25	25	33
St Anthony	52	2	8	13	2	8	2
St Catharines	1	1,926	7	17	48	7	138
Terrace	29	158	16	9	24	11	50
Thompson	38	90	3	18	14	17	16
Timmins	32	146	26	14	14	29	36
Val-D'or	19	506	7	15	36	7	64
Victoria Harbour	0	0	0	0	0	0	0
Wabush	43	74	7	18	20	7	38
Whitecourt	11	778	12	14	46	12	128
Williams Lake	39	90	9	21	18	9	22

Table 11-1
Local movements - civil, peak hour and peak day — NAV CANADA towers

	Rank of movements	Number of movements	Peak hour occurrence			Peak day occurrence	
			Day in month	Hour in day	Number of movements	Day in month	Number of movements
Abbotsford	4	8,100	11	9	74	13	448
Boundary Bay	1	10,438	23	12	104	14	482
Calgary International	37	244	20	10	16	20	48
Calgary/Springbank	3	9,761	11	9	86	7	578
Chicoutimi/St-Honoré	20	3,026	1	9	90	1	343
Edmonton City Centre	26	1,580	6	13	34	4	126
Edmonton International	35	418	22	10	20	22	74
Edmonton/Villeneuve	16	3,353	25	11	54	3	216
Gander International	30	956	14	22	30	14	132
Halifax/Robert L Stanfield International	33	475	6	17	26	6	111
Hamilton	17	3,256	17	12	50	16	246
Kelowna	18	3,222	28	17	40	28	216
Kitchener/Waterloo	9	5,732	27	9	86	25	402
Langley	7	6,388	26	9	78	26	372
London	19	3,112	11	11	44	29	216
Moncton/Greater Moncton International	11	5,475	26	18	50	1	336
Montréal/Mirabel International	34	437	30	9	28	13	74
Montréal/Pierre Elliott Trudeau International	0	0	0	0	0	0	0
Montréal/St-Hubert	5	7,352	2	10	98	28	412
Oshawa	14	3,762	28	10	54	7	274
Ottawa/Macdonald-Cartier International	12	4,756	1	12	46	7	282
Pitt Meadows	6	6,956	19	17	68	1	438
Prince George	27	1,102	9	13	40	2	142
Québec/Jean Lesage International	22	2,578	23	11	40	13	160
Regina International	24	2,106	9	15	31	20	154
Saskatoon/John G Diefenbaker International	21	2,988	19	9	54	20	318
Sault Ste. Marie	15	3,496	20	17	44	12	240
St. John's International	38	218	30	17	20	30	70
St-Jean	32	590	21	10	28	25	50
Sudbury	36	391	30	12	28	30	68
Thunder Bay	25	2,095	27	13	42	12	196
Toronto/Buttonville Municipal	2	10,356	9	14	74	15	578
Toronto/City Centre	13	4,436	16	13	60	25	274
Toronto/Lester B Pearson International	0	0	0	0	0	0	0
Vancouver Harbour	39	12	27	11	6	27	6
Vancouver International	0	0	0	0	0	0	0
Victoria International	10	5,652	7	16	64	27	286
Whitehorse International	31	844	3	14	20	3	84
Windsor	23	2,128	9	11	40	11	142
Winnipeg/James Armstrong Richardson International	29	1,040	6	9	44	5	136
Winnipeg/St. Andrews	8	6,170	23	9	72	28	462
Yellowknife	28	1,054	26	10	30	26	106

Table 11-2
Local movements - civil, peak hour and peak day — NAV CANADA flight service stations

	Rank of movements	Number of movements	Peak hour occurrence			Peak day occurrence	
			Day in month	Hour in day	Number of movements	Day in month	Number of movements
Brandon Municipal	22	360	2	10	22	27	58
Campbell River	14	608	14	12	32	14	94
Castlegar	26	230	6	12	24	4	36
Charlottetown	20	496	1	12	16	8	80
Churchill	46	14	19	22	4	19	4
Cranbrook	27	195	19	19	14	12	26
Dawson Creek	15	536	3	12	24	3	72
Deer Lake	40	88	24	19	16	26	26
Fort McMurray	8	1,052	25	20	38	14	80
Fort Nelson	36	110	26	11	24	19	46
Fort St John	16	529	16	10	24	18	48
Fredericton International	25	230	7	20	36	7	90
Grande Prairie	9	960	20	14	26	20	106
High Level	39	88	2	10	60	2	66
Îles-de-la-Madeleine	0	0	0	0	0	0	0
Inuvik/Mike Zubko	28	171	6	18	24	5	38
Iqaluit	35	126	11	18	20	11	74
Kamloops	4	1,502	3	11	36	10	118
Kenora	34	138	22	10	18	1	32
Kingston	6	1,207	23	11	40	30	92
Kuujuuaq	30	150	8	13	20	8	74
Kuujuuarapik	50	2	20	19	2	20	2
La Grande Rivière	49	6	26	10	4	26	4
La Ronge	24	246	12	17	18	1	28
Lethbridge	13	694	7	14	26	4	80
Lloydminster	18	518	24	9	28	7	56
Medicine Hat	10	922	10	18	44	10	128
Mont-Joli	0	0	0	0	0	0	0
Nanaimo	12	722	3	11	48	3	56
Norman Wells	23	302	16	17	16	1	42
North Bay	2	1,856	25	15	38	25	158
Ottawa/Gatineau	5	1,362	6	14	40	6	188
Peace River	44	64	13	14	12	13	20
Penticton	7	1,110	14	15	48	15	82
Port Hardy	48	8	2	13	4	2	4
Prince Albert	42	88	12	13	14	12	32
Prince Rupert	45	30	30	12	7	30	12
Rankin Inlet	47	10	7	20	6	7	8
Red Deer Regional	3	1,526	12	10	26	7	102
Rouyn-Noranda	32	146	2	15	24	11	54
Saint John	21	366	15	15	18	15	70
Sept-Îles	17	526	9	13	42	9	72
Sioux Lookout	41	88	21	20	18	9	22
Smithers	31	147	25	9	25	25	33
St Anthony	51	2	8	13	2	8	2
St Catharines	1	1,920	7	17	48	7	138
Terrace	29	158	16	9	24	11	50
Thompson	38	90	3	18	14	17	16
Timmins	33	146	26	14	14	29	36
Val-D'or	19	506	7	15	36	7	64
Victoria Harbour	0	0	0	0	0	0	0
Wabush	43	74	7	18	20	7	38
Whitecourt	11	778	12	14	46	12	128
Williams Lake	37	90	9	21	18	9	22

Table 12-1
Local movements - military, peak hour and peak day — NAV CANADA towers

	Rank of movements	Number of movements	Peak hour occurrence			Peak day occurrence	
			Day in month	Hour in day	Number of movements	Day in month	Number of movements
Abbotsford	19	12	3	13	8	3	8
Boundary Bay	0	0	0	0	0	0	0
Calgary International	0	0	0	0	0	0	0
Calgary/Springbank	27	1	2	21	1	2	1
Chicoutimi/St-Honoré	12	26	24	11	10	24	20
Edmonton City Centre	10	30	11	14	4	14	10
Edmonton International	13	24	26	21	4	26	8
Edmonton/Villeneuve	0	0	0	0	0	0	0
Gander International	4	150	25	10	14	25	32
Halifax/Robert L Stanfield International	8	54	24	12	12	24	12
Hamilton	22	6	15	10	4	15	4
Kelowna	0	0	0	0	0	0	0
Kitchener/Waterloo	14	20	16	9	8	16	12
Langley	25	4	18	14	2	18	2
London	6	68	21	10	16	21	26
Moncton/Greater Moncton International	16	18	25	13	4	25	6
Montréal/Mirabel International	20	10	22	11	10	22	10
Montréal/Pierre Elliott Trudeau International	0	0	0	0	0	0	0
Montréal/St-Hubert	17	16	26	10	12	26	12
Oshawa	0	0	0	0	0	0	0
Ottawa/Macdonald-Cartier International	15	18	28	17	4	28	8
Pitt Meadows	26	2	27	11	2	27	2
Prince George	0	0	0	0	0	0	0
Québec/Jean Lesage International	21	8	29	8	6	29	6
Regina International	7	58	4	9	8	4	16
Saskatoon/John G Diefenbaker International	3	182	11	20	22	20	42
Sault Ste. Marie	11	26	19	9	12	19	12
St. John's International	0	0	0	0	0	0	0
St-Jean	24	4	29	15	4	29	4
Sudbury	0	0	0	0	0	0	0
Thunder Bay	9	44	18	19	18	18	36
Toronto/Buttonville Municipal	0	0	0	0	0	0	0
Toronto/City Centre	0	0	0	0	0	0	0
Toronto/Lester B Pearson International	0	0	0	0	0	0	0
Vancouver Harbour	0	0	0	0	0	0	0
Vancouver International	0	0	0	0	0	0	0
Victoria International	2	368	21	23	24	25	58
Whitehorse International	23	6	24	12	6	24	6
Windsor	18	14	2	10	8	2	8
Winnipeg/James Armstrong Richardson International	1	468	21	9	20	21	58
Winnipeg/St. Andrews	0	0	0	0	0	0	0
Yellowknife	5	114	8	16	12	28	24

Table 12-2
Local movements - military, peak hour and peak day — NAV CANADA flight service stations

	Rank of movements	Number of movements	Peak hour occurrence			Peak day occurrence	
			Day in month	Hour in day	Number of movements	Day in month	Number of movements
Brandon Municipal	1	42	28	10	16	28	20
Campbell River	6	10	27	15	8	27	8
Castlegar	0	0	0	0	0	0	0
Charlottetown	0	0	0	0	0	0	0
Churchill	0	0	0	0	0	0	0
Cranbrook	0	0	0	0	0	0	0
Dawson Creek	0	0	0	0	0	0	0
Deer Lake	0	0	0	0	0	0	0
Fort McMurray	0	0	0	0	0	0	0
Fort Nelson	0	0	0	0	0	0	0
Fort St John	0	0	0	0	0	0	0
Fredericton International	3	20	12	13	10	12	12
Grande Prairie	0	0	0	0	0	0	0
High Level	0	0	0	0	0	0	0
Îles-de-la-Madeleine	10	4	5	16	4	5	4
Inuvik/Mike Zubko	0	0	0	0	0	0	0
Iqaluit	0	0	0	0	0	0	0
Kamloops	0	0	0	0	0	0	0
Kenora	0	0	0	0	0	0	0
Kingston	5	12	20	17	6	20	6
Kuujuuaq	0	0	0	0	0	0	0
Kuujuuarapik	0	0	0	0	0	0	0
La Grande Rivière	0	0	0	0	0	0	0
La Ronge	0	0	0	0	0	0	0
Lethbridge	0	0	0	0	0	0	0
Lloydminster	0	0	0	0	0	0	0
Medicine Hat	4	12	28	13	8	28	8
Mont-Joli	0	0	0	0	0	0	0
Nanaimo	0	0	0	0	0	0	0
Norman Wells	0	0	0	0	0	0	0
North Bay	11	4	8	19	4	8	4
Ottawa/Gatineau	0	0	0	0	0	0	0
Peace River	0	0	0	0	0	0	0
Penticton	0	0	0	0	0	0	0
Port Hardy	8	6	18	12	4	18	4
Prince Albert	12	4	12	11	4	12	4
Prince Rupert	0	0	0	0	0	0	0
Rankin Inlet	0	0	0	0	0	0	0
Red Deer Regional	7	10	9	10	10	9	10
Rouyn-Noranda	0	0	0	0	0	0	0
Saint John	2	36	29	8	22	29	36
Sept-Îles	0	0	0	0	0	0	0
Sioux Lookout	0	0	0	0	0	0	0
Smithers	0	0	0	0	0	0	0
St Anthony	0	0	0	0	0	0	0
St Catharines	9	6	2	12	6	2	6
Terrace	0	0	0	0	0	0	0
Thompson	0	0	0	0	0	0	0
Timmins	0	0	0	0	0	0	0
Val-D'or	0	0	0	0	0	0	0
Victoria Harbour	0	0	0	0	0	0	0
Wabush	0	0	0	0	0	0	0
Whitecourt	0	0	0	0	0	0	0
Williams Lake	0	0	0	0	0	0	0

Methodology

Survey universe

Coverage

The survey covers all aircraft movements at Canadian airports with NAV CANADA air traffic control towers and flight service stations.

Methodology survey

The Itinerant movement record is designed to capture:

- Aircraft identification
- Aircraft type
- The last station before landing at the reporting airport or the next station after take-off
- Arrival or departure
- Time of movement
- Runway used
- Flight rules (Instrument flight rules or Visual flight rules).

The Local aircraft movement record provides for reports of local movements by:

- Hour
- Single engine aircraft
- Multi-engine aircraft
- Jet aircraft
- Military aircraft
- Date of movement

Processing of aircraft movement statistics involves several stages. Preliminary monthly data by class of operation are released in **Preliminary aircraft movement statistics**, catalogue no. 51F0001P (TP-1496 (NAV CANADA towered airports only)). Data which follow in **Aircraft movement statistics - Monthly** report, catalogue nos. 51-007-X and 51-008-X (TP-141) may contain revisions to the originally released figures. Annual tables, which may reflect further revisions, are released in the publication, **Aircraft movement statistics - Annual** report - TP-577. In particular, data on itinerant movements by type of operation may reflect revisions as various sources of comparative information (data collected from commercial air carriers by the Aviation Statistics Centre, Statistics Canada) become available during the processing cycle. Finally, when revisions are required after the release of TP-577, they are contained in the five year historical summary of subsequent editions of TP-577. These revisions are also reflected in the CANSIM tables, both monthly and annual.

The records are completed daily, based on a twenty-four hour clock running from zero hour to 23:59. The times recorded are Coordinated Universal Time (UTC); however, published statistics are shown in local times. The records are transmitted to the Aviation Statistics Centre.

The Aviation Statistics Centre maintains a data base of parameter files of current information on all registered aircraft. The storage of this information reduces the reporting burden of the survey respondents and limits the element of human error associated with the preparation of source documents.

Other parameter files information includes registered aircraft identifications and their corresponding aircraft types, gross take-off weights, types of power plant (piston, jet or turboprop); whether the aircraft are fixed wing, helicopters or gliders. This information also provides a basis for identifying type of flights (commercial, private and government) and the geographical area in which the flights take place.

The parameter files also include airport environment information against which the airport category is checked; the reported runway is validated and the time difference between UTC and Local is assigned.

Data quality and limitations

Aircraft movement statistics are accumulated from data originating with air traffic control tower units or flight service station personnel. Because staff in these positions are highly trained in factual observation and reporting, the entries in the data bank are of a high quality.

The procedures for reporting aircraft movements on the Daily air traffic records by tower units are described in the NAV CANADA Air traffic control manual of operations (TP 703) Volume 1, Para. 1023 to 1023.5. Definitions for terms used in these paragraphs can be found in the appendix I "Glossary of terms" of this report.

To maintain uniformity in the reporting of source data, ASC issues to air traffic control units an "Air traffic designators" handbook (TP 143) listing the official Transport Canada aircraft type designators and the designators of various domestic and international air carriers. This handbook and another titled "Canada flight supplement" listing various airport codes serve as references to help ensure the reporting of the proper aircraft identity and the point of origin and destination of flights.

The processing system contains editing procedures designed to identify data errors occurring during transcription or during data capture of forms. Identified errors are manually corrected by ASC editing staff.

Errors may occur if an aircraft type code which exists is reported or data captured in error for a flight. For example, the reporting or keying of B727 for a flight actually performed by a B737 may not be detected during the system editing. That the aircraft type information is recorded by highly trained air traffic control tower staff using a common handbook of official aircraft codes will minimize this problem.

Similarly, the breakdown of the data on a geographic basis by use of location codes can be subject to error. For smaller locations, alphanumeric location codes are often used and the sequence of numbers and letters determines the geographic area to which the data are assigned. In some cases, where a sequence error has been introduced into the system either at the reporting unit or at data capture, a domestic movement may be classified as transborder or vice versa. The use of common manuals of location identifiers works to minimize this occurrence.

Factors influencing the data

Roberval – the Flight Service Station closed in November 2006. As of December 2006, Roberval appears in Volume II – Airports without air traffic control towers.

Harmony Airways ceased its operations on April 9, 2007.

Icelandair began regular service from Halifax, Nova Scotia to Iceland on May 17, 2007.

Appendix I

Glossary of terms

Air carrier

Aircraft operators licensed by the Canadian Transportation Agency to transport persons, mail and/or goods by air.

Levels I to III air carriers (Defn 2000) – This includes every Canadian air carrier that, in each of the two calendar years immediately preceding the report year, realized annual gross revenues of \$1,000,000 or more for the air services for which the air carrier held a licence. Also includes foreign air carriers.

Levels IV to VI air carriers (Defn 2000) – Canadian air carriers not classified in report level I-III that, in each of the two calendar years immediately preceding the report year, realized annual gross revenues of less than \$1,000,000 for the air services for which the air carrier held a licence. Since 2000, levels IV and VI are no longer applicable.

Aircraft movement

A take off, a landing, or a simulated approach by an aircraft. ATC Manops amendment 8-8-83. NC-703.

Class of operation

Aircraft movements are classified as either “Itinerant” or “Local”.

Commercial

Flights by aircraft operators licensed by the Canadian Transportation Agency to perform commercial air services. Commercial operations are divided into two categories: **Air carrier** and **Other commercial**.

Domestic itinerant movements

Movements, at a Canadian airport, of aircraft departing to or arriving from another point in Canada.

FSS

Flight service station.

Government – Civil

Aircraft owned by federal, provincial and municipal bodies as well as foreign states, but excluding those owned by crown corporations, boards and commissions. Such aircraft are coded “3” under “Purpose” in the Canadian civil aircraft register.

Government – Military

Aircraft of any branch of the armed forces of any nation.

Gross take-off weight

The maximum weight for which the aircraft is licensed to operate. For operational purposes, all weights are rounded upwards to the next 1,000 kilograms. Thus 3,200 kilograms becomes 4,000 kilograms.

I.F.R. flight

A flight conducted in accordance with Instrument flight rules.

International movements

Movements, at a Canadian airport, of aircraft arriving from or departing to a point outside Canada. International movements are subclassified into “transborder” (to or from a point in the United States including Alaska but excluding Hawaii), and “other international” (to or from points in countries other than Canada and the United States).

Since aircraft movements are reported on the basis of place “arrived from” or “departed to”, an arrival at Mirabel airport from London, England would appear under “other international”. If the same aircraft moved on to Toronto, both the departure at Mirabel and the arrival at Toronto would be shown as “domestic”.

Itinerant movements

At Airports **with** control towers and/or Flight service stations: for the purpose of completing air traffic records, itinerant movements are considered as movements in which aircraft proceed to or arrive from another location; or where aircraft leave the circuit but return without landing at another airport. At Airports **without** control towers: an aircraft movement in which the aircraft arrives from or departs to a point other than the reporting airport; or a movement by an aircraft that leaves the close proximity of an airport and returns without landing at another airport.

Local movements

At Airports **with** control towers and/or Flight service stations: for the purpose of completing air traffic records, local movements are considered as movements in which the aircraft remains in the circuit. At Airports **without** control towers: an aircraft movement in which the aircraft remains in the close proximity of the airport. Local movements are often carried out during training flights (touch-and-go), equipment tests etc.

Other commercial

Flights performed by **Commercial** aircraft operators not included in the **Air carrier** categories. Flying schools, agricultural sprayers, water-bombers, aerial photography and survey, etc.

Power plant

The source of propulsion. For example, piston engines, turbo-propellers and jet engines. “Helicopters”, in this report, include both piston and turboshaft-driven engines.

Private aircraft

Aircraft used solely for private purposes, not for hire and compensation, which are classified as “Private” or “Private Restricted” in the Canadian civil aircraft register or similar registries of other countries. Owners include individuals, groups and business firms.

Runway 88

Through control zone flights, i.e. flights which communicate with the tower while transiting the tower control zone to another destination without landing at the reporting airport.

Data for these runways are not included in the grand total.

Simulated approaches

Movements that are either missed instrument or practice instrument approaches without landing.

TC

Transport Canada

Tower control zone

A controlled airspace within the proximity of an air traffic control tower, usually within a radius of less than 24 kilometres of the tower.

V.F.R. flight

A flight conducted in accordance with Visual flight rules.

Weight group

The classification of weight classes in groups for statistical purposes.