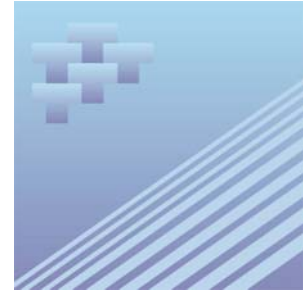




Catalogue no. 51-007-XIE

Aircraft Movement Statistics: NAV CANADA Towers and Flight Service Stations



August 2007



Statistics
Canada Statistique
Canada

Canada

How to obtain more information

For information about this product or the wide range of services and data available from Statistics Canada, visit our website at www.statcan.ca or contact us by e-mail at infostats@statcan.ca or by phone from 8:30am to 4:30pm Monday to Friday at:

Toll-free telephone (Canada and the United States):

Inquiries line **1-800-263-1136**

National telecommunications device for the hearing impaired **1-800-363-7629**

Fax line **1-877-287-4369**

Depository Services Program inquiries line **1-800-635-7943**

Depository Services Program fax line **1-800-565-7757**

Statistics Canada national contact centre: 1-613-951-8116

Fax line **1-613-951-0581**

Information to access the product

This product, catalogue no. 51-007-XIE, is available for free in electronic format. To obtain a single issue, visit our website at www.statcan.ca and select Publications.

Standards of service to the public

Statistics Canada is committed to serving its clients in a prompt, reliable and courteous manner. To this end, the Agency has developed *standards of service* which its employees observe in serving its clients.

To obtain a copy of these service standards, please contact Statistics Canada toll free at 1-800-263-1136. The service standards are also published on www.statcan.ca under About us > Providing services to Canadians.



Statistics Canada
Transportation Division

Aircraft Movement Statistics: NAV CANADA Towers and Flight Service Stations

August 2007

Published by authority of the Minister responsible for Statistics Canada

© Minister of Industry, 2007 and the © Minister of Transport, 2007.

All rights reserved. The content of this electronic publication may be reproduced, in whole or in part, and by any means, without further permission from Statistics Canada, subject to the following conditions: that it be done solely for the purposes of private study, research, criticism, review or newspaper summary, and/or for non-commercial purposes; and that Statistics Canada be fully acknowledged as follows: Source (or "Adapted from", if appropriate): Statistics Canada, year of publication, name of product, catalogue number, volume and issue numbers, reference period and page(s). Otherwise, no part of this publication may be reproduced, stored in a retrieval system or transmitted in any form, by any means—electronic, mechanical or photocopy—or for any purposes without prior written permission of Licensing Services, Client Services Division, Statistics Canada, Ottawa, Ontario, Canada K1A 0T6.

September 2007

Catalogue no. 51-007-XIE, Vol. 1, No. 8

ISSN 1911-6314

Frequency: Monthly

Ottawa

La version française de cette publication est disponible sur demande (n° 51-007-XIF au catalogue).

Note of appreciation

Canada owes the success of its statistical system to a long standing partnership between Statistics Canada, the citizens of Canada, its businesses, governments and other institutions. Accurate and timely statistical information could not be produced without their continued cooperation and goodwill.

User information

Symbols

The following standard symbols are used in Statistics Canada publications:

- . not available for any reference period
- .. not available for a specific reference period
- ... not applicable
- 0 true zero or a value rounded to zero
- 0^s value rounded to 0 (zero) where there is a meaningful distinction between true zero and the value that was rounded
- p preliminary
- r revised
- x suppressed to meet the confidentiality requirements of the *Statistics Act*
- E use with caution
- F too unreliable to be published

Acknowledgements

This publication was prepared by the Aviation Statistics Centre, of the Transportation Division, Statistics Canada under the general direction of **Gord Baldwin**, Director, Transportation Division and **Norah Hillary**, Chief, Aviation Statistics Centre. **Kathie Davidson**, **Maureen de Souza**, **John Scolli** and **Sylvie Savard** contributed to the preparation of this publication.

Table of contents

Highlights	5
Analysis	6
Related products	7
Statistical tables	
1 Total aircraft movements by class of operation	10
1-1 NAV CANADA towers	10
1-2 NAV CANADA flight service stations	11
2 Total aircraft movements, civil and military	12
2-1 NAV CANADA towers	12
2-2 NAV CANADA flight service stations	13
3 Itinerant movements by type of operator	14
3-1 NAV CANADA towers	14
3-2 NAV CANADA flight service stations	15
4 Itinerant movements by I.F.R. (Instrument flight rules) and V.F.R. (Visual flight rules) and runway 88 movements	16
4-1 NAV CANADA towers	16
4-2 NAV CANADA flight service stations	17
5 Itinerant movements by type of power plant	18
5-1 NAV CANADA towers	18
5-2 NAV CANADA flight service stations	19
6 Itinerant movements by aircraft weight group	20
6-1 NAV CANADA towers	20
6-2 NAV CANADA flight service stations	21
7 Itinerant movements, domestic, transborder and international	22
7-1 NAV CANADA towers	22
7-2 NAV CANADA flight service stations	26

Table of contents – continued

8	Total aircraft movements, peak hour and peak day	31
8-1	NAV CANADA towers	31
8-2	NAV CANADA flight service stations	32
9	Itinerant aircraft movements, peak hour and peak day	33
9-1	NAV CANADA towers	33
9-2	NAV CANADA flight service stations	34
10	Local movements, peak hour and peak day	35
10-1	NAV CANADA towers	35
10-2	NAV CANADA flight service stations	36
11	Local movements - civil, peak hour and peak day	37
11-1	NAV CANADA towers	37
11-2	NAV CANADA flight service stations	38
12	Local movements - military, peak hour and peak day	39
12-1	NAV CANADA towers	39
12-2	NAV CANADA flight service stations	40

Data quality, concepts and methodology

Methodology	41
Data quality and limitations	43

Appendix

I	Glossary of terms	44
---	-------------------	----

Highlights

- For the fifteenth consecutive month, aircraft take-offs and landings at Canadian airports with NAV CANADA air traffic control towers and flight service stations increased in year-over-year monthly comparisons. These 96 airports reported 586,186 movements in August 2007 compared with 561,106 movements at 97 airports in August 2006, an increase of 4.5% (+25,080 movements).
- Itinerant movements (flights from one airport to another) increased by 2.3% (+9,412 movements) in August 2007 compared with the same month a year earlier.
- Local movements (flights that remain in the vicinity of the airport) increased by 10.8% (+15,668 movements) in August 2007 compared with August 2006.

Table 1
Distribution of aircraft movements at NAV CANADA Towers and Flight Service Stations

	NAV CANADA towers		NAV CANADA Flight Service Stations		Total	
	number	Change from August 2007/ August 2006	number	Change from August 2007/ August 2006	number	Change from August 2007/ August 2006
Grand total	465,153	5.6	121,033	0.2	586,186	4.5
Itinerant movements						
Air carriers	226,767	3.4	67,615	-0.7	294,382	2.4
Other commercial movements	45,888	3.4	7,817	-4.3	53,705	2.2
Private movements	43,819	-1.1	17,232	-0.4	61,051	-0.9
Government civil movements	5,041	-1.7	2,578	2.6	7,619	-0.3
Government military movements	6,135	30.0	2,471	29.4	8,606	29.8
Itinerant total	327,650	3.0	97,713	-0.3	425,363	2.3
Local movements						
Civil local movements	134,906	12.7	21,904	-3.2	156,810	10.1
Military local movements	2,597	-0.6	1,416	763.4	4,013	44.5
Local total	137,503	12.4	23,320	2.3	160,823	10.8

Analysis

For the fifteenth consecutive month, aircraft take-offs and landings at Canadian airports with NAV CANADA air traffic control towers and flight service stations increased in year-over-year monthly comparisons. These 96 airports reported 586,186 movements in August 2007 compared with 561,106 movements at 97 airports in August 2006, an increase of 4.5% (+25,080 movements).

Itinerant movements (flights from one airport to another) increased by 2.3% (+9,412 movements) in August 2007 compared with the same month a year earlier.

Local movements (flights that remain in the vicinity of the airport) increased by 10.8% (+15,668 movements) in August 2007 compared with August 2006.

Airports with NAV CANADA air traffic control towers

The 42 Canadian airports with NAV CANADA air traffic control towers reported 465,153 aircraft take-offs and landings in August, up 5.6% compared with August 2006 (440,333 movements). Year-over-year increases in aircraft movements were reported by 32 of the airports in August 2007. The variations ranged from 80.8% at Gander International to -17.8% at Edmonton/City Centre.

Itinerant movements (flights from one airport to another) increased by 3.0% (+9,679 movements) in August compared with the same month a year earlier. Year-over-year variations in itinerant movements ranged from a 36.8% increase (+1,959 movements) at Moncton/Greater Moncton International to a decline of 12.7% (-535 movements) at St. John's International.

Local movements (flights that remain in the vicinity of the airport) increased by 12.4% (+15,141 movements) in August compared with August 2006. Year-over-year variations in local movements ranged from a 214.2% increase (+2,386 movements) at Gander International to a decline of 46.3% (-904 movements) at Edmonton/City Centre.

Airports with NAV CANADA flight service stations

The 54 Canadian airports with NAV CANADA flight service stations reported 121,033 aircraft take-offs and landings in August, up 0.2% compared with 55 flight service stations in August 2006 (120,773 movements). Year-over-year increases in aircraft movements were reported by 28 of these airports in August 2007. The variations ranged from a 115.3% increase (+1,342 movements) at Brandon Municipal, Manitoba to a decline of 45.7% (-925 movements) at Rouyn-Noranda, Quebec.

Itinerant movements (flights from one airport to another) decreased by 0.3% (-267 movements) in August compared with the same month a year earlier. Year-over-year variations in itinerant movements ranged from a 55.0% increase (+671 movements) at Castlegar, British Columbia to a decline of 38.4% (-523 movements) at Peace River, Alberta.

Local movements (flights that remain in the vicinity of the airport) recorded in August 2007 increased by 2.3% compared with the same month a year earlier. Brandon Municipal, Manitoba recorded the largest gain in local movements, increasing by 906 movements (+292.3%) compared with August 2006.

Related products

Selected CANSIM tables from Statistics Canada

401-0005	Aircraft movements by class of operation, airports with NAV CANADA towers, preliminary, monthly
401-0006	Aircraft movements by class of operation, airports with NAV CANADA towers, preliminary, annual
401-0007	Aircraft movements, by class of operation and peak hour and peak day of movements, airports with NAV CANADA towers, monthly
401-0008	Aircraft movements, by civil and military movements, airports with NAV CANADA towers, monthly
401-0009	Itinerant movements, by type of operation, airports with NAV CANADA towers, monthly
401-0010	Itinerant movements, by instrument flight rules, visual flight rules and runway 88, airports with NAV CANADA towers, monthly
401-0011	Itinerant movements, by type of power plant, airports with NAV CANADA towers, monthly
401-0012	Itinerant movements, by aircraft gross take-off weight, airports with NAV CANADA towers, monthly
401-0013	Domestic and international itinerant movements, by type of operation, airports with NAV CANADA towers, monthly
401-0014	Aircraft movements, by class of operation and peak hour and peak day of movements, airports with NAV CANADA flight service stations, monthly
401-0015	Aircraft movements, by civil and military movements, airports with NAV CANADA flight service stations, monthly
401-0016	Itinerant movements, by type of operation, airports with NAV CANADA flight service stations, monthly
401-0017	Itinerant movements, by instrument flight rules, visual flight rules and runway 88, airports with NAV CANADA flight service stations, monthly
401-0018	Itinerant movements, by type of power plant, airports with NAV CANADA flight service stations, monthly
401-0019	Itinerant movements, by aircraft gross take-off weight, airports with NAV CANADA flight service stations, monthly
401-0020	Domestic and international itinerant movements, by type of operation, airports with NAV CANADA flight service stations, monthly

Selected surveys from Statistics Canada

2715	Aircraft Movement Statistics
------	------------------------------

Selected summary tables from Statistics Canada

- *Aircraft movements by class of operation (monthly)*

Statistical tables

Table 1-1
Total aircraft movements by class of operation — NAV CANADA towers

	Total		Itinerant		Local	
	Rank of movements	Number of movements	Rank of movements	Number of movements	Rank of movements	Number of movements
Abbotsford	11	14,313	17	5,988	4	8,325
Boundary Bay	4	21,941	10	8,721	1	13,220
Calgary International	3	22,248	3	22,002	38	246
Calgary/Springbank	10	14,682	16	6,122	2	8,560
Chicoutimi/St-Honoré	28	7,098	35	3,100	15	3,998
Edmonton City Centre	29	6,745	19	5,697	27	1,048
Edmonton International	15	11,390	7	10,901	36	489
Edmonton/Villeneuve	34	5,517	42	1,381	14	4,136
Gander International	30	6,742	34	3,242	17	3,500
Halifax/Robert L Stanfield International	21	8,950	12	8,249	33	701
Hamilton	26	7,398	28	4,516	20	2,882
Kelowna	22	8,925	25	5,213	16	3,712
Kitchener/Waterloo	17	9,968	26	4,996	11	4,972
Langley	20	9,529	29	4,355	9	5,174
London	24	8,523	23	5,313	18	3,210
Moncton/Greater Moncton International	14	12,367	14	7,277	10	5,090
Montréal/Mirabel International	42	2,619	41	1,676	29	943
Montréal/Pierre Elliott Trudeau International	5	20,552	4	20,552	0	0
Montréal/St-Hubert	9	14,804	15	6,855	6	7,949
Oshawa	33	5,721	36	2,945	22	2,776
Ottawa/Macdonald-Cartier International	8	15,121	6	10,931	13	4,190
Pitt Meadows	13	13,177	27	4,697	3	8,480
Prince George	39	3,314	38	2,678	34	636
Québec/Jean Lesage International	16	11,163	11	8,323	21	2,840
Regina International	35	5,469	30	4,139	26	1,330
Saskatoon/John G Diefenbaker International	23	8,552	22	5,471	19	3,081
Sault Ste. Marie	36	4,935	37	2,748	23	2,187
St. John's International	38	3,981	32	3,671	37	310
St-Jean	31	6,595	18	5,879	32	716
Sudbury	37	4,084	33	3,539	35	545
Thunder Bay	25	7,724	20	5,638	24	2,086
Toronto/Buttonville Municipal	7	17,152	9	8,858	5	8,294
Toronto/City Centre	18	9,927	21	5,559	12	4,368
Toronto/Lester B Pearson International	1	38,567	1	38,567	0	0
Vancouver Harbour	27	7,322	13	7,320	39	2
Vancouver International	2	33,798	2	33,798	0	0
Victoria International	6	18,418	8	10,727	7	7,691
Whitehorse International	40	3,239	39	2,509	31	730
Windsor	41	2,897	40	1,893	28	1,004
Winnipeg/James Armstrong Richardson International	12	13,865	5	12,455	25	1,410
Winnipeg/St. Andrews	19	9,832	31	3,926	8	5,906
Yellowknife	32	5,989	24	5,223	30	766
Total of NAV CANADA towers (42)	.	465,153	.	327,650	.	137,503

Table 1-2
Total aircraft movements by class of operation — NAV CANADA flight service stations

	Total		Itinerant		Local	
	Rank of movements	Number of movements	Rank of movements	Number of movements	Rank of movements	Number of movements
Brandon Municipal	19	2,506	37	1,290	9	1,216
Campbell River	10	3,444	7	2,674	12	770
Castlegar	27	2,030	25	1,892	26	138
Charlottetown	8	3,664	11	2,436	8	1,228
Churchill	46	983	43	965	48	18
Cranbrook	38	1,393	38	1,275	30	118
Dawson Creek	41	1,297	48	793	17	504
Deer Lake	29	1,877	26	1,877	0	0
Fort McMurray	1	7,533	1	6,129	6	1,404
Fort Nelson	34	1,699	31	1,639	37	60
Fort St John	23	2,277	21	2,063	23	214
Fredericton International	12	3,329	5	2,721	14	608
Grande Prairie	15	3,065	10	2,519	16	546
High Level	44	1,107	41	1,069	42	38
Îles-de-la-Madeleine	53	446	52	446	0	0
Inuvik/Mike Zubko	21	2,403	14	2,275	27	128
Iqaluit	25	2,215	17	2,171	40	44
Kamloops	4	4,010	8	2,650	7	1,360
Kenora	37	1,561	34	1,493	35	68
Kingston	5	3,745	18	2,153	3	1,592
Kuujuuaq	40	1,345	36	1,295	39	50
Kuujuuarapik	51	505	50	505	0	0
La Grande Rivière	48	832	47	812	47	20
La Ronge	32	1,738	30	1,644	32	94
Lethbridge	14	3,112	24	1,908	10	1,204
Lloydminster	39	1,366	44	890	18	476
Medicine Hat	30	1,790	39	1,230	15	560
Mont-Joli	52	485	53	419	36	66
Nanaimo	11	3,344	6	2,720	13	624
Norman Wells	26	2,106	22	1,984	28	122
North Bay	9	3,566	19	2,128	5	1,438
Ottawa/Gatineau	6	3,742	28	1,694	1	2,048
Peace River	47	869	46	839	44	30
Penticton	13	3,172	16	2,222	11	950
Port Hardy	18	2,605	9	2,577	45	28
Prince Albert	28	1,964	27	1,876	33	88
Prince Rupert	50	565	51	463	31	102
Rankin Inlet	36	1,676	29	1,650	46	26
Red Deer Regional	7	3,669	20	2,113	4	1,556
Rouyn-Noranda	45	1,100	45	878	22	222
Saint John	24	2,257	23	1,963	20	294
Sept-Îles	22	2,348	15	2,262	34	86
Sioux Lookout	16	3,040	3	2,990	38	50
Smithers	42	1,148	40	1,114	43	34
St Anthony	54	370	54	370	0	0
St Catharines	3	4,408	12	2,366	2	2,042
Terrace	35	1,691	32	1,573	29	118
Thompson	17	2,942	4	2,900	41	42
Timmins	20	2,492	13	2,354	25	138
Val-D'or	33	1,714	35	1,376	19	338
Victoria Harbour	2	4,789	2	4,789	0	0
Wabush	49	796	49	784	49	12
Whitecourt	43	1,141	42	981	24	160
Williams Lake	31	1,762	33	1,514	21	248
Total of all flight service stations (54)	.	121,033	.	97,713	.	23,320

Table 2-1
Total aircraft movements, civil and military — NAV CANADA towers

	Civil movements				Military movements		
	Total	Itinerant		Local	Total	Itinerant	Local
		Commercial	Private and government				
	number						
Abbotsford	13,058	4,023	1,698	7,337	1,255	267	988
Boundary Bay	21,941	6,825	1,896	13,220	0	0	0
Calgary International	22,041	20,309	1,486	246	207	207	0
Calgary/Springbank	14,676	4,029	2,089	8,558	6	4	2
Chicoutimi/St-Honoré	7,096	2,899	199	3,998	2	2	0
Edmonton City Centre	6,645	3,933	1,666	1,046	100	98	2
Edmonton International	11,276	10,464	341	471	114	96	18
Edmonton/Villeneuve	5,485	971	378	4,136	32	32	0
Gander International	6,228	2,411	533	3,284	514	298	216
Halifax/Robert L. Stanfield International	8,728	7,588	537	603	222	124	98
Hamilton	7,325	3,649	836	2,840	73	31	42
Kelowna	8,825	4,053	1,086	3,686	100	74	26
Kitchener/Waterloo	9,921	3,639	1,320	4,962	47	37	10
Langley	9,507	2,313	2,024	5,170	22	18	4
London	8,515	4,020	1,285	3,210	8	8	0
Moncton/Greater Moncton International	12,303	6,639	574	5,090	64	64	0
Montréal/Mirabel International	2,552	1,168	461	923	67	47	20
Montréal/Pierre Elliott Trudeau International	20,508	18,508	2,000	0	44	44	0
Montréal/St-Hubert	14,587	5,033	1,645	7,909	217	177	40
Oshawa	5,709	1,923	1,012	2,774	12	10	2
Ottawa/Macdonald-Cartier International	14,740	9,459	1,169	4,112	381	303	78
Pitt Meadows	13,153	2,532	2,141	8,480	24	24	0
Prince George	3,309	2,084	589	636	5	5	0
Québec/Jean Lesage International	10,951	6,493	1,624	2,834	212	206	6
Regina International	4,990	2,856	876	1,258	479	407	72
Saskatoon/John G. Diefenbaker International	8,047	4,160	974	2,913	505	337	168
Sault Ste. Marie	4,893	2,357	357	2,179	42	34	8
St. John's International	3,708	3,103	327	278	273	241	32
St-Jean	4,746	862	3,168	716	1,849	1,849	0
Sudbury	3,985	2,778	662	545	99	99	0
Thunder Bay	7,552	4,902	606	2,044	172	130	42
Toronto/Buttonville Municipal	17,149	6,143	2,712	8,294	3	3	0
Toronto/City Centre	9,881	4,430	1,083	4,368	46	46	0
Toronto/Lester B. Pearson International	38,528	37,141	1,387	0	39	39	0
Vancouver Harbour	7,322	6,992	328	2	0	0	0
Vancouver International	33,775	31,769	2,006	0	23	23	0
Victoria International	18,132	7,916	2,708	7,508	286	103	183
Whitehorse International	3,210	1,767	721	722	29	21	8
Windsor	2,885	1,514	373	998	12	6	6
Winnipeg/James Armstrong Richardson International	12,987	10,967	982	1,038	878	506	372
Winnipeg/St. Andrews	9,828	3,417	505	5,906	4	4	0
Yellowknife	5,724	4,616	496	612	265	111	154
Total of NAV CANADA towers (42)	456,421	272,655	48,860	134,906	8,732	6,135	2,597

Table 2-2
Total aircraft movements, civil and military — NAV CANADA flight service stations

	Civil movements				Military movements		
	Total	Itinerant		Local	Total	Itinerant	Local
		Commercial	Private and government				
	number						
Brandon Municipal	963	536	293	134	1,543	461	1,082
Campbell River	3,430	1,484	1,176	770	14	14	0
Castlegar	2,021	1,740	143	138	9	9	0
Charlottetown	3,600	1,843	539	1,218	64	54	10
Churchill	977	853	106	18	6	6	0
Cranbrook	1,335	957	262	116	58	56	2
Dawson Creek	1,297	623	170	504	0	0	0
Deer Lake	1,864	1,739	125	0	13	13	0
Fort McMurray	7,530	5,249	877	1,404	3	3	0
Fort Nelson	1,693	1,352	281	60	6	6	0
Fort St John	2,277	1,764	299	214	0	0	0
Fredericton International	3,157	1,663	914	580	172	144	28
Grande Prairie	3,065	1,920	599	546	0	0	0
High Level	1,107	959	110	38	0	0	0
Îles-de-la-Madeleine	439	377	62	0	7	7	0
Inuvik/Mike Zubko	2,189	2,095	88	6	214	92	122
Iqaluit	1,994	1,719	231	44	221	221	0
Kamloops	4,004	2,073	571	1,360	6	6	0
Kenora	1,497	1,115	318	64	64	60	4
Kingston	3,718	1,458	676	1,584	27	19	8
Kuujuaq	1,339	1,180	109	50	6	6	0
Kuujuarapik	505	497	8	0	0	0	0
La Grande Rivière	832	768	44	20	0	0	0
La Ronge	1,635	1,248	293	94	103	103	0
Lethbridge	2,926	1,094	706	1,126	186	108	78
Lloydminster	1,358	465	417	476	8	8	0
Medicine Hat	1,745	895	298	552	45	37	8
Mont-Joli	482	343	73	66	3	3	0
Nanaimo	3,326	1,459	1,243	624	18	18	0
Norman Wells	2,099	1,642	335	122	7	7	0
North Bay	3,415	1,429	564	1,422	151	135	16
Ottawa/Gatineau	3,731	707	976	2,048	11	11	0
Peace River	865	673	162	30	4	4	0
Penticton	3,073	1,395	730	948	99	97	2
Port Hardy	2,565	2,173	378	14	40	26	14
Prince Albert	1,913	1,347	478	88	51	51	0
Prince Rupert	563	359	102	102	2	2	0
Rankin Inlet	1,674	1,607	41	26	2	2	0
Red Deer Regional	3,645	1,439	652	1,554	24	22	2
Rouyn-Noranda	1,100	662	216	222	0	0	0
Saint John	2,225	1,495	442	288	32	26	6
Sept-Îles	2,339	2,025	228	86	9	9	0
Sioux Lookout	3,034	2,812	172	50	6	6	0
Smithers	1,148	911	203	34	0	0	0
St Anthony	370	323	47	0	0	0	0
St Catharines	3,857	1,107	708	2,042	551	551	0
Terrace	1,685	1,450	117	118	6	6	0
Thompson	2,937	2,654	241	42	5	5	0
Timmins	2,482	1,964	380	138	10	10	0
Val-D'or	1,714	1,067	309	338	0	0	0
Victoria Harbour	4,788	4,137	651	0	1	1	0
Wabush	789	665	112	12	7	7	0
Whitecourt	1,127	847	120	160	14	14	0
Williams Lake	1,703	1,074	415	214	59	25	34
Total of all flight service stations (54)	117,146	75,432	19,810	21,904	3,887	2,471	1,416

Table 3-1
Itinerant movements by type of operator — NAV CANADA towers

	Total	Air carrier movements		Other commercial movements	Private movements	Government movements	
		Levels I to III and foreign	Levels IV to VI			Civil	Military
	number						
Abbotsford	5,988	581	1,932	1,510	1,553	145	267
Boundary Bay	8,721	12	1,577	5,236	1,857	39	0
Calgary International	22,002	18,035	1,252	1,022	1,376	110	207
Calgary/Springbank	6,122	29	862	3,138	2,023	66	4
Chicoutimi/St-Honoré	3,100	21	935	1,943	197	2	2
Edmonton City Centre	5,697	1,605	783	1,545	1,366	300	98
Edmonton International	10,901	9,883	416	165	321	20	96
Edmonton/Villeneuve	1,381	12	235	724	375	3	32
Gander International	3,242	608	1,737	66	450	83	298
Halifax/Robert L Stanfield International	8,249	6,760	732	96	497	40	124
Hamilton	4,516	2,265	1,111	273	656	180	31
Kelowna	5,213	2,570	262	1,221	973	113	74
Kitchener/Waterloo	4,996	352	2,011	1,276	1,304	16	37
Langley	4,355	135	162	2,016	2,015	9	18
London	5,313	1,416	993	1,611	1,213	72	8
Moncton/Greater Moncton International	7,277	2,096	4,050	493	320	254	64
Montréal/Mirabel International	1,676	776	348	44	437	24	47
Montréal/Pierre Elliott Trudeau International	20,552	17,229	894	385	1,812	188	44
Montréal/St-Hubert	6,855	2,186	652	2,195	1,567	78	177
Oshawa	2,945	153	137	1,633	1,007	5	10
Ottawa/Macdonald-Cartier International	10,931	6,747	548	2,164	564	605	303
Pitt Meadows	4,697	56	864	1,612	2,126	15	24
Prince George	2,678	1,438	525	121	521	68	5
Québec/Jean Lesage International	8,323	3,934	543	2,016	1,294	330	206
Regina International	4,139	2,002	751	103	699	177	407
Saskatoon/John G Diefenbaker International	5,471	2,955	835	370	611	363	337
Sault Ste. Marie	2,748	809	263	1,285	305	52	34
St. John's International	3,671	1,779	1,228	96	190	137	241
St-Jean	5,879	97	186	579	3,146	22	1,849
Sudbury	3,539	1,415	1,257	106	400	262	99
Thunder Bay	5,638	3,441	850	611	402	204	130
Toronto/Buttonville Municipal	8,858	483	759	4,901	2,643	69	3
Toronto/City Centre	5,559	838	1,589	2,003	1,061	22	46
Toronto/Lester B Pearson International	38,567	36,513	459	169	1,340	47	39
Vancouver Harbour	7,320	6,065	633	294	320	8	0
Vancouver International	33,798	29,081	2,342	346	1,693	313	23
Victoria International	10,727	3,518	3,364	1,034	2,660	48	103
Whitehorse International	2,509	888	857	22	677	44	21
Windsor	1,893	648	780	86	353	20	6
Winnipeg/James Armstrong Richardson International	12,455	10,163	680	124	600	382	506
Winnipeg/St. Andrews	3,926	421	1,821	1,175	503	2	4
Yellowknife	5,223	3,851	686	79	392	104	111
Total of NAV CANADA towers (42)	327,650	183,866	42,901	45,888	43,819	5,041	6,135

Table 3-2
Itinerant movements by type of operator — NAV CANADA flight service stations

	Total	Air carrier movements		Other commercial movements	Private movements	Government movements	
		Levels I to III and foreign	Levels IV to VI			Civil	Military
	number						
Brandon Municipal	1,290	159	281	96	263	30	461
Campbell River	2,674	829	279	376	1,134	42	14
Castlegar	1,892	399	1,227	114	124	19	9
Charlottetown	2,436	1,054	217	572	499	40	54
Churchill	965	780	69	4	85	21	6
Cranbrook	1,275	668	169	120	256	6	56
Dawson Creek	793	268	132	223	168	2	0
Deer Lake	1,877	949	732	58	54	71	13
Fort McMurray	6,129	3,146	1,654	449	833	44	3
Fort Nelson	1,639	355	533	464	275	6	6
Fort St John	2,063	720	842	202	297	2	0
Fredericton International	2,721	948	679	36	811	103	144
Grande Prairie	2,519	1,231	644	45	581	18	0
High Level	1,069	397	429	133	98	12	0
Îles-de-la-Madeleine	446	351	14	12	26	36	7
Inuvik/Mike Zubko	2,275	639	1,448	8	44	44	92
Iqaluit	2,171	1,534	155	30	100	131	221
Kamloops	2,650	886	645	542	487	84	6
Kenora	1,493	438	569	108	260	58	60
Kingston	2,153	540	375	543	632	44	19
Kuujuaq	1,295	1,040	116	24	83	26	6
Kuujuarapik	505	481	12	4	2	6	0
La Grande Rivière	812	601	152	15	38	6	0
La Ronge	1,644	1,176	20	52	88	205	103
Lethbridge	1,908	536	62	496	692	14	108
Lloydminster	890	134	311	20	390	27	8
Medicine Hat	1,230	664	100	131	285	13	37
Mont-Joli	419	310	7	26	63	10	3
Nanaimo	2,720	501	732	226	1,198	45	18
Norman Wells	1,984	843	729	70	290	45	7
North Bay	2,128	557	398	474	403	161	135
Ottawa/Gatineau	1,694	45	328	334	820	156	11
Peace River	839	282	301	90	146	16	4
Penticton	2,222	372	873	150	712	18	97
Port Hardy	2,577	1,999	152	22	309	69	26
Prince Albert	1,876	1,161	37	149	300	178	51
Prince Rupert	463	260	81	18	80	22	2
Rankin Inlet	1,650	1,354	249	4	33	8	2
Red Deer Regional	2,113	474	817	148	634	18	22
Rouyn-Noranda	878	442	134	86	190	26	0
Saint John	1,963	928	307	260	432	10	26
Sept-Îles	2,262	1,410	560	55	174	54	9
Sioux Lookout	2,990	2,438	305	69	161	11	6
Smithers	1,114	628	275	8	184	19	0
St Anthony	370	53	200	70	24	23	0
St Catharines	2,366	41	1,006	60	690	18	551
Terrace	1,573	789	629	32	107	10	6
Thompson	2,900	2,357	288	9	53	188	5
Timmins	2,354	1,644	303	17	227	153	10
Val-D'or	1,376	672	137	258	217	92	0
Victoria Harbour	4,789	3,969	119	49	593	58	1
Wabush	784	348	287	30	82	30	7
Whitecourt	981	40	703	104	112	8	14
Williams Lake	1,514	444	508	122	393	22	25
Total of all flight service stations (54)	97,713	45,284	22,331	7,817	17,232	2,578	2,471

Table 4-1

**Itinerant movements by I.F.R. (Instrument flight rules) and V.F.R. (Visual flight rules) and runway 88 movements
— NAV CANADA towers**

	Itinerant movements				Runway 88 flights number	
	Total of IFR and VFR flights ¹	IFR	IFR flights, as percentage of total flights	VFR		VFR flights, as percentage of total flights
	number		percent	number		percent
Abbotsford	5,988	1,445	24.1	4,543	75.8	2,338
Boundary Bay	8,721	377	4.3	8,344	95.6	602
Calgary International	22,002	20,129	91.4	1,873	8.5	722
Calgary/Springbank	6,122	293	4.7	5,829	95.2	4,154
Chicoutimi/St-Honoré	3,100	118	3.8	2,982	96.1	220
Edmonton City Centre	5,697	2,635	46.2	3,062	53.7	4,176
Edmonton International	10,901	10,292	94.4	609	5.5	1,540
Edmonton/Villeneuve	1,381	14	1.0	1,367	98.9	129
Gander International	3,242	1,509	46.5	1,733	53.4	210
Halifax/Robert L Stanfield International	8,249	7,485	90.7	764	9.2	600
Hamilton	4,516	2,841	62.9	1,675	37.0	1,164
Kelowna	5,213	2,939	56.3	2,274	43.6	1,455
Kitchener/Waterloo	4,996	920	18.4	4,076	81.5	749
Langley	4,355	25	0.5	4,330	99.4	3,956
London	5,313	1,789	33.6	3,524	66.3	651
Moncton/Greater Moncton International	7,277	2,565	35.2	4,712	64.7	794
Montréal/Mirabel International	1,676	973	58.0	703	41.9	1,727
Montréal/Pierre Elliott Trudeau International	20,552	19,355	94.1	1,197	5.8	4,774
Montréal/St-Hubert	6,855	1,374	20.0	5,481	79.9	1,883
Oshawa	2,945	162	5.5	2,783	94.4	815
Ottawa/Macdonald-Cartier International	10,931	7,607	69.5	3,324	30.4	1,205
Pitt Meadows	4,697	30	0.6	4,667	99.3	4,049
Prince George	2,678	1,550	57.8	1,128	42.1	567
Québec/Jean Lesage International	8,323	4,838	58.1	3,485	41.8	954
Regina International	4,139	2,556	61.7	1,583	38.2	113
Saskatoon/John G Diefenbaker International	5,471	3,516	64.2	1,955	35.7	190
Sault Ste. Marie	2,748	1,135	41.3	1,613	58.6	241
St. John's International	3,671	3,312	90.2	359	9.7	607
St-Jean	5,879	223	3.7	5,656	96.2	961
Sudbury	3,539	1,826	51.5	1,713	48.4	666
Thunder Bay	5,638	3,805	67.4	1,833	32.5	410
Toronto/Butterville Municipal	8,858	1,022	11.5	7,836	88.4	1,017
Toronto/City Centre	5,559	1,147	20.6	4,412	79.3	7,290
Toronto/Lester B Pearson International	38,567	38,309	99.3	258	0.6	91
Vancouver Harbour	7,320	53	0.7	7,267	99.2	4,832
Vancouver International	33,798	24,314	71.9	9,484	28.0	13,044
Victoria International	10,727	3,705	34.5	7,022	65.4	11,774
Whitehorse International	2,509	639	25.4	1,870	74.5	2,219
Windsor	1,893	814	43.0	1,079	56.9	90
Winnipeg/James Armstrong Richardson International	12,455	10,832	86.9	1,623	13.0	1,209
Winnipeg/St. Andrews	3,926	42	1.0	3,884	98.9	420
Yellowknife	5,223	2,772	53.0	2,451	46.9	6,022
Total of NAV CANADA towers (42)	327,650	191,287	58.4	136,363	41.6	90,630

1. Total excludes runway 88 flights.

Table 4-2

Itinerant movements by I.F.R. (Instrument flight rules) and V.F.R. (Visual flight rules) and runway 88 movements — NAV CANADA flight service stations

	Itinerant movements				Runway 88 flights	
	Total of IFR and VFR flights ¹	IFR	IFR flights, as percentage of total flights	VFR		VFR flights, as percentage of total flights
	number		percent	number		percent
Brandon Municipal	1,290	190	14.7	1,100	85.2	89
Campbell River	2,674	750	28.0	1,924	71.9	972
Castlegar	1,892	417	22.0	1,475	77.9	199
Charlottetown	2,436	1,234	50.6	1,202	49.3	76
Churchill	965	771	79.8	194	20.1	169
Cranbrook	1,275	693	54.3	582	45.6	689
Dawson Creek	793	243	30.6	550	69.3	32
Deer Lake	1,877	1,619	86.2	258	13.7	31
Fort McMurray	6,129	1,958	31.9	4,171	68.0	142
Fort Nelson	1,639	415	25.3	1,224	74.6	145
Fort St John	2,063	697	33.7	1,366	66.2	123
Fredericton International	2,721	1,171	43.0	1,550	56.9	144
Grande Prairie	2,519	1,448	57.4	1,071	42.5	208
High Level	1,069	311	29.0	758	70.9	428
Îles-de-la-Madeleine	446	411	92.1	35	7.8	8
Inuvik/Mike Zubko	2,275	378	16.6	1,897	83.3	152
Iqaluit	2,171	1,348	62.0	823	37.9	149
Kamloops	2,650	1,111	41.9	1,539	58.0	457
Kenora	1,493	621	41.5	872	58.4	235
Kingston	2,153	713	33.1	1,440	66.8	137
Kuujuuaq	1,295	442	34.1	853	65.8	464
Kuujuuarapik	505	289	57.2	216	42.7	12
La Grande Rivière	812	531	65.3	281	34.6	349
La Ronge	1,644	890	54.1	754	45.8	1,171
Lethbridge	1,908	669	35.0	1,239	64.9	66
Lloydminster	890	239	26.8	651	73.1	46
Medicine Hat	1,230	390	31.7	840	68.2	269
Mont-Joli	419	260	62.0	159	37.9	43
Nanaimo	2,720	558	20.5	2,162	79.4	2,152
Norman Wells	1,984	225	11.3	1,759	88.6	374
North Bay	2,128	783	36.7	1,345	63.2	703
Ottawa/Gatineau	1,694	166	9.7	1,528	90.2	206
Peace River	839	317	37.7	522	62.2	136
Penticton	2,222	397	17.8	1,825	82.1	226
Port Hardy	2,577	757	29.3	1,820	70.6	428
Prince Albert	1,876	1,290	68.7	586	31.2	167
Prince Rupert	463	285	61.5	178	38.4	24
Rankin Inlet	1,650	876	53.0	774	46.9	47
Red Deer Regional	2,113	350	16.5	1,763	83.4	337
Rouyn-Noranda	878	603	68.6	275	31.3	152
Saint John	1,963	1,152	58.6	811	41.3	27
Sept-Îles	2,262	1,395	61.6	867	38.3	369
Sioux Lookout	2,990	1,875	62.7	1,115	37.2	1,436
Smithers	1,114	529	47.4	585	52.5	477
St Anthony	370	248	67.0	122	32.9	0
St Catharines	2,366	272	11.4	2,094	88.5	432
Terrace	1,573	781	49.6	792	50.3	402
Thompson	2,900	1,647	56.7	1,253	43.2	347
Timmins	2,354	1,667	70.8	687	29.1	328
Val-D'or	1,376	638	46.3	738	53.6	796
Victoria Harbour	4,789	34	0.7	4,755	99.2	796
Wabush	784	640	81.6	144	18.3	421
Whitecourt	981	99	10.0	882	89.9	98
Williams Lake	1,514	488	32.2	1,026	67.7	566
Total of all flight service stations (54)	97,713	38,281	39.2	59,432	60.8	18,452

1. Total excludes runway 88 flights.

Table 5-1
Itinerant movements by type of power plant — NAV CANADA towers

	Total	Jet engines	Turbo-propellers	Piston engines	Helicopters	Gliders
	number					
Abbotsford	5,988	677	262	4,298	750	1
Boundary Bay	8,721	2	39	8,275	405	0
Calgary International	22,002	14,744	5,238	1,427	591	2
Calgary/Springbank	6,122	26	272	5,334	488	2
Chicoutimi/St-Honoré	3,100	2	58	2,480	554	6
Edmonton City Centre	5,697	506	1,982	2,369	839	1
Edmonton International	10,901	7,039	3,298	529	34	1
Edmonton/Villeneuve	1,381	11	21	1,179	168	2
Gander International	3,242	798	636	1,519	289	0
Halifax/Robert L Stanfield International	8,249	4,844	2,360	699	346	0
Hamilton	4,516	1,824	852	1,698	142	0
Kelowna	5,213	1,613	1,393	1,989	218	0
Kitchener/Waterloo	4,996	244	409	4,117	222	4
Langley	4,355	1	120	3,627	590	17
London	5,313	420	1,511	3,152	227	3
Moncton/Greater Moncton International	7,277	1,323	963	4,862	129	0
Montréal/Mirabel International	1,676	720	313	451	192	0
Montréal/Pierre Elliott Trudeau International	20,552	13,511	5,729	918	394	0
Montréal/St-Hubert	6,855	225	883	5,018	728	1
Oshawa	2,945	7	93	2,698	146	1
Ottawa/Macdonald-Cartier International	10,931	5,476	2,169	2,736	550	0
Pitt Meadows	4,697	4	108	4,319	257	9
Prince George	2,678	638	1,105	572	363	0
Québec/Jean Lesage International	8,323	1,386	3,160	3,074	686	17
Regina International	4,139	1,537	695	1,828	77	2
Saskatoon/John G Diefenbaker International	5,471	1,660	1,791	1,984	36	0
Sault Ste. Marie	2,748	47	996	1,652	53	0
St. John's International	3,671	1,650	1,582	147	292	0
St-Jean	5,879	0	64	3,112	32	2,671
Sudbury	3,539	76	1,821	861	781	0
Thunder Bay	5,638	979	3,109	1,066	484	0
Toronto/Buttonville Municipal	8,858	142	674	7,529	512	1
Toronto/City Centre	5,559	6	1,220	3,511	817	5
Toronto/Lester B Pearson International	38,567	32,147	6,280	93	47	0
Vancouver Harbour	7,320	0	3,461	2,839	1,020	0
Vancouver International	33,798	14,826	12,216	5,337	1,419	0
Victoria International	10,727	1,477	2,466	6,351	433	0
Whitehorse International	2,509	377	545	1,223	364	0
Windsor	1,893	150	609	1,102	32	0
Winnipeg/James Armstrong Richardson International	12,455	6,179	4,838	1,318	120	0
Winnipeg/St. Andrews	3,926	1	330	3,473	122	0
Yellowknife	5,223	978	2,953	723	569	0
Total of NAV CANADA towers (42)	327,650	118,273	78,624	111,489	16,518	2,746

Table 5-2
Itinerant movements by type of power plant — NAV CANADA flight service stations

	Total	Jet engines	Turbo-propellers	Piston engines	Helicopters	Gliders
	number					
Brandon Municipal	1,290	39	614	593	42	2
Campbell River	2,674	148	1,046	1,133	346	1
Castlegar	1,892	27	590	528	747	0
Charlottetown	2,436	593	473	1,301	69	0
Churchill	965	28	776	97	64	0
Cranbrook	1,275	129	662	415	69	0
Dawson Creek	793	16	280	401	96	0
Deer Lake	1,877	296	1,353	131	97	0
Fort McMurray	6,129	936	1,622	1,696	1,875	0
Fort Nelson	1,639	39	402	437	760	1
Fort St John	2,063	208	573	473	809	0
Fredericton International	2,721	430	610	1,474	207	0
Grande Prairie	2,519	325	1,118	571	505	0
High Level	1,069	12	394	227	436	0
Îles-de-la-Madeleine	446	14	338	88	6	0
Inuvik/Mike Zubko	2,275	202	1,136	352	585	0
Iqaluit	2,171	454	1,332	47	338	0
Kamloops	2,650	73	1,052	1,168	357	0
Kenora	1,493	114	581	380	417	1
Kingston	2,153	37	631	1,367	118	0
Kuujuaq	1,295	173	925	53	144	0
Kuujuarapik	505	4	487	6	8	0
La Grande Rivière	812	2	740	47	23	0
La Ronge	1,644	8	1,130	472	34	0
Lethbridge	1,908	127	638	1,075	68	0
Lloydminster	890	8	223	617	42	0
Medicine Hat	1,230	37	460	611	120	2
Mont-Joli	419	10	260	137	11	1
Nanaimo	2,720	39	580	2,014	77	10
Norman Wells	1,984	159	548	659	618	0
North Bay	2,128	134	852	649	492	1
Ottawa/Gatineau	1,694	15	126	1,391	156	6
Peace River	839	28	295	119	397	0
Penticton	2,222	54	617	1,129	422	0
Port Hardy	2,577	89	1,548	744	196	0
Prince Albert	1,876	25	1,304	498	49	0
Prince Rupert	463	49	235	87	92	0
Rankin Inlet	1,650	158	1,208	35	249	0
Red Deer Regional	2,113	47	367	1,589	110	0
Rouyn-Noranda	878	92	578	201	7	0
Saint John	1,963	508	557	855	43	0
Sept-Îles	2,262	29	1,323	554	356	0
Sioux Lookout	2,990	16	2,545	375	54	0
Smithers	1,114	23	703	190	198	0
St Anthony	370	4	294	44	28	0
St Catharines	2,366	91	72	1,595	578	30
Terrace	1,573	33	810	74	656	0
Thompson	2,900	45	2,337	355	163	0
Timmins	2,354	13	1,762	401	178	0
Val-D'or	1,376	102	608	491	175	0
Victoria Harbour	4,789	0	3,010	1,137	642	0
Wabush	784	6	608	98	72	0
Whitecourt	981	9	123	151	698	0
Williams Lake	1,514	13	605	476	420	0
Total of all flight service stations (54)	97,713	6,270	44,061	31,808	15,519	55

Table 6-1
Itinerant movements by aircraft weight group — NAV CANADA towers

	Gross take-off weight in kilograms									
	2 000	2 001	4 001	5 671	9 001	18 001	35 001	70 001	90 001	136 001
	and under	to 4 000	to 5 670	to 9 000	to 18 000	to 35 000	to 70 000	to 90 000	to 136 000	and over
	number									
Abbotsford	4,548	497	238	46	74	90	454	28	4	9
Boundary Bay	8,305	378	33	2	3	0	0	0	0	0
Calgary International	1,364	749	1,804	2,484	904	4,314	7,465	1,800	387	731
Calgary/Springbank	5,367	460	150	113	0	32	0	0	0	0
Chicoutimi/St-Honoré	2,652	287	159	2	0	0	0	0	0	0
Edmonton City Centre	2,659	545	1,490	707	200	62	0	34	0	0
Edmonton International	418	175	636	894	488	2,546	4,656	775	177	136
Edmonton/Villeneuve	1,323	37	17	0	4	0	0	0	0	0
Gander International	1,573	57	199	229	548	312	56	74	33	161
Halifax/Robert L. Stanfield International	360	379	499	851	1,191	1,562	2,550	416	231	210
Hamilton	1,480	478	335	323	267	221	617	3	742	50
Kelowna	2,007	226	265	799	329	715	856	0	16	0
Kitchener/Waterloo	4,159	215	220	69	256	11	66	0	0	0
Langley	4,113	211	25	0	5	0	0	0	0	1
London	3,317	327	314	98	867	183	187	2	0	18
Moncton/Greater Moncton International	4,718	278	456	325	198	830	167	3	290	12
Montréal/Mirabel International	564	156	59	149	40	119	119	4	302	164
Montréal/Pierre Elliott Trudeau International	951	334	779	1,110	3,273	5,702	4,643	1,312	113	2,335
Montréal/St-Hubert	5,134	576	847	99	159	13	13	0	14	0
Oshawa	2,633	200	61	1	41	5	0	4	0	0
Ottawa/Macdonald-Cartier International	2,730	278	1,016	235	721	2,855	1,814	875	234	173
Pitt Meadows	4,488	95	106	6	0	1	0	0	1	0
Prince George	804	218	249	703	25	498	181	0	0	0
Québec/Jean Lesage International	3,165	591	908	372	1,590	1,587	32	11	8	59
Regina International	1,367	553	370	388	63	629	681	0	88	0
Saskatoon/John G. Diefenbaker International	1,626	439	715	704	273	751	911	5	47	0
Sault Ste. Marie	1,614	132	541	82	245	134	0	0	0	0
St. John's International	120	16	495	421	822	210	1,213	269	91	14
St-Jean	5,747	53	75	0	2	0	0	2	0	0
Sudbury	776	660	1,463	132	172	330	6	0	0	0
Thunder Bay	1,019	392	2,687	296	235	785	218	6	0	0
Toronto/Buttonville Municipal	7,525	676	486	101	59	9	2	0	0	0
Toronto/City Centre	3,712	476	707	36	2	622	0	2	0	2
Toronto/Lester B. Pearson International	63	406	309	2,622	4,208	8,215	13,134	4,268	652	4,690
Vancouver Harbour	400	5,260	1,660	0	0	0	0	0	0	0
Vancouver International	1,748	6,452	1,301	3,384	3,570	5,067	6,754	2,088	414	3,020
Victoria International	5,730	1,308	281	579	1,140	880	676	89	44	0
Whitehorse International	1,291	370	222	86	45	148	329	0	0	18
Windsor	1,027	174	43	119	330	154	28	8	8	2
Winnipeg/James Armstrong Richardson International	619	864	3,615	482	865	1,824	2,770	606	788	22
Winnipeg/St. Andrews	3,180	662	81	0	3	0	0	0	0	0
Yellowknife	706	792	910	265	445	1,115	649	341	0	0
Total of NAV CANADA towers (42)	107,102	27,432	26,826	19,314	23,662	42,531	51,247	13,025	4,684	11,827

Table 6-2
Itinerant movements by aircraft weight group — NAV CANADA flight service stations

	Gross take-off weight in kilograms									
	2 000 and under	2 001 to 4 000	4 001 to 5 670	5 671 to 9 000	9 001 to 18 000	18 001 to 35 000	35 001 to 70 000	70 001 to 90 000	90 001 to 136 000	136 001 and over
	number									
Brandon Municipal	543	64	566	36	30	3	0	44	4	0
Campbell River	1,359	318	165	439	352	34	6	1	0	0
Castlegar	556	123	256	235	409	209	104	0	0	0
Charlottetown	1,087	299	90	20	286	514	132	8	0	0
Churchill	114	58	186	82	243	246	15	20	1	0
Cranbrook	363	110	141	395	37	175	54	0	0	0
Dawson Creek	482	17	50	135	109	0	0	0	0	0
Deer Lake	165	38	196	179	1,002	76	219	2	0	0
Fort McMurray	2,958	968	528	564	225	547	339	0	0	0
Fort Nelson	1,025	210	145	145	112	2	0	0	0	0
Fort St John	1,140	125	254	256	113	173	2	0	0	0
Fredericton International	1,384	194	192	246	157	491	14	4	14	25
Grande Prairie	853	262	538	281	12	428	145	0	0	0
High Level	577	68	219	191	12	2	0	0	0	0
Îles-de-la-Madeleine	18	70	94	9	159	94	2	0	0	0
Inuvik/Mike Zubko	757	95	905	173	95	110	126	14	0	0
Iqaluit	132	100	871	129	66	493	219	37	122	2
Kamloops	1,072	340	161	452	194	431	0	0	0	0
Kenora	387	125	832	64	45	36	0	4	0	0
Kingston	1,387	73	106	476	97	10	0	4	0	0
Kuujuuaq	178	11	802	8	109	53	33	0	101	0
Kuujuuarapik	8	8	201	2	190	96	0	0	0	0
La Grande Rivière	45	72	143	6	150	396	0	0	0	0
La Ronge	132	286	473	140	295	318	0	0	0	0
Lethbridge	988	144	311	389	34	34	4	4	0	0
Lloydminster	609	63	102	112	2	2	0	0	0	0
Medicine Hat	640	87	224	257	10	10	0	2	0	0
Mont-Joli	109	36	153	20	91	10	0	0	0	0
Nanaimo	1,695	427	98	73	105	322	0	0	0	0
Norman Wells	1,039	281	437	18	0	54	155	0	0	0
North Bay	860	328	474	135	188	129	10	4	0	0
Ottawa/Gatineau	1,272	264	124	10	7	17	0	0	0	0
Peace River	392	89	303	35	18	2	0	0	0	0
Penticton	1,348	115	120	172	95	364	8	0	0	0
Port Hardy	310	623	864	262	494	22	2	0	0	0
Prince Albert	331	154	277	355	336	421	2	0	0	0
Prince Rupert	70	95	41	34	93	130	0	0	0	0
Rankin Inlet	276	143	469	221	303	74	150	14	0	0
Red Deer Regional	1,523	172	312	73	10	2	16	5	0	0
Rouyn-Noranda	196	12	257	16	173	158	66	0	0	0
Saint John	677	216	150	289	100	463	66	2	0	0
Sept-Îles	527	372	456	161	621	124	1	0	0	0
Sioux Lookout	137	274	2,024	551	2	2	0	0	0	0
Smithers	370	108	129	268	117	122	0	0	0	0
St Anthony	30	38	179	14	109	0	0	0	0	0
St Catharines	2,045	191	53	46	20	11	0	0	0	0
Terrace	675	34	80	261	321	200	2	0	0	0
Thompson	196	643	1,462	39	319	239	2	0	0	0
Timmins	336	366	914	98	440	200	0	0	0	0
Val-D'or	533	73	309	26	215	148	4	0	68	0
Victoria Harbour	70	3,129	1,590	0	0	0	0	0	0	0
Wabush	97	54	96	56	421	60	0	0	0	0
Whitecourt	740	88	122	16	7	6	2	0	0	0
Williams Lake	775	107	112	428	6	12	74	0	0	0
Total of all flight service stations (54)	35,588	12,760	20,356	9,098	9,156	8,275	1,974	169	310	27

Table 7-1
Itinerant movements, domestic, transborder and international — NAV CANADA towers

	Total	Air carrier movements		Other commercial movements	Private movements	Government movements	
		Levels I to III and foreign	Levels IV to VI			Civil	Military
number							
Abbotsford							
Domestic	5,804	571	1,918	1,508	1,436	145	226
Transborder	181	9	13	2	116	0	41
Other international	3	1	1	0	1	0	0
Total	5,988	581	1,932	1,510	1,553	145	267
Boundary Bay							
Domestic	8,642	12	1,575	5,208	1,808	39	0
Transborder	79	0	2	28	49	0	0
Other international	0	0	0	0	0	0	0
Total	8,721	12	1,577	5,236	1,857	39	0
Calgary International							
Domestic	17,868	14,366	1,195	984	1,025	109	189
Transborder	3,578	3,119	56	38	349	1	15
Other international	556	550	1	0	2	0	3
Total	22,002	18,035	1,252	1,022	1,376	110	207
Calgary/Springbank							
Domestic	6,023	29	856	3,135	1,933	66	4
Transborder	98	0	5	3	90	0	0
Other international	1	0	1	0	0	0	0
Total	6,122	29	862	3,138	2,023	66	4
Chicoutimi/St-Honoré							
Domestic	3,100	21	935	1,943	197	2	2
Transborder	0	0	0	0	0	0	0
Other international	0	0	0	0	0	0	0
Total	3,100	21	935	1,943	197	2	2
Edmonton City Centre							
Domestic	5,655	1,597	773	1,545	1,342	300	98
Transborder	42	8	10	0	24	0	0
Other international	0	0	0	0	0	0	0
Total	5,697	1,605	783	1,545	1,366	300	98
Edmonton International							
Domestic	9,652	8,707	408	163	264	19	91
Transborder	1,133	1,063	7	0	57	1	5
Other international	116	113	1	2	0	0	0
Total	10,901	9,883	416	165	321	20	96
Edmonton/Villeneuve							
Domestic	1,381	12	235	724	375	3	32
Transborder	0	0	0	0	0	0	0
Other international	0	0	0	0	0	0	0
Total	1,381	12	235	724	375	3	32
Gander International							
Domestic	2,486	367	1,734	34	123	81	147
Transborder	353	108	0	13	160	1	71
Other international	403	133	3	19	167	1	80
Total	3,242	608	1,737	66	450	83	298
Halifax/Robert L Stanfield International							
Domestic	6,487	5,364	544	89	351	38	101
Transborder	1,343	1,146	48	5	130	2	12
Other international	419	250	140	2	16	0	11
Total	8,249	6,760	732	96	497	40	124
Hamilton							
Domestic	3,713	1,612	1,099	267	526	180	29
Transborder	590	446	12	6	124	0	2
Other international	213	207	0	0	6	0	0
Total	4,516	2,265	1,111	273	656	180	31

Table 7-1 – continued

Itinerant movements, domestic, transborder and international — NAV CANADA towers

	Total	Air carrier movements		Other commercial movements	Private movements	Government movements	
		Levels I to III and foreign	Levels IV to VI			Civil	Military
	number						
Kelowna							
Domestic	4,841	2,305	248	1,221	880	113	74
Transborder	371	264	14	0	93	0	0
Other international	1	1	0	0	0	0	0
Total	5,213	2,570	262	1,221	973	113	74
Kitchener/Waterloo							
Domestic	4,549	131	1,962	1,272	1,135	12	37
Transborder	446	221	49	4	168	4	0
Other international	1	0	0	0	1	0	0
Total	4,996	352	2,011	1,276	1,304	16	37
Langley							
Domestic	4,324	135	162	2,015	1,985	9	18
Transborder	18	0	0	1	17	0	0
Other international	13	0	0	0	13	0	0
Total	4,355	135	162	2,016	2,015	9	18
London							
Domestic	4,817	1,112	983	1,601	1,043	70	8
Transborder	494	302	10	10	170	2	0
Other international	2	2	0	0	0	0	0
Total	5,313	1,416	993	1,611	1,213	72	8
Moncton/Greater Moncton International							
Domestic	7,161	2,013	4,048	493	290	253	64
Transborder	91	62	2	0	27	0	0
Other international	25	21	0	0	3	1	0
Total	7,277	2,096	4,050	493	320	254	64
Montréal/Mirabel International							
Domestic	1,466	573	347	43	434	24	45
Transborder	202	195	1	1	3	0	2
Other international	8	8	0	0	0	0	0
Total	1,676	776	348	44	437	24	47
Montréal/Pierre Elliott Trudeau International							
Domestic	11,842	9,527	839	296	953	188	39
Transborder	6,304	5,497	39	64	704	0	0
Other international	2,406	2,205	16	25	155	0	5
Total	20,552	17,229	894	385	1,812	188	44
Montréal/St-Hubert							
Domestic	6,623	2,167	649	2,185	1,368	77	177
Transborder	229	19	2	9	199	0	0
Other international	3	0	1	1	0	1	0
Total	6,855	2,186	652	2,195	1,567	78	177
Oshawa							
Domestic	2,880	138	136	1,623	968	5	10
Transborder	65	15	1	10	39	0	0
Other international	0	0	0	0	0	0	0
Total	2,945	153	137	1,633	1,007	5	10
Ottawa/Macdonald-Cartier International							
Domestic	8,637	4,658	528	2,148	432	605	266
Transborder	2,148	1,986	6	4	123	0	29
Other international	146	103	14	12	9	0	8
Total	10,931	6,747	548	2,164	564	605	303
Pitt Meadows							
Domestic	4,689	56	864	1,612	2,118	15	24
Transborder	8	0	0	0	8	0	0
Other international	0	0	0	0	0	0	0
Total	4,697	56	864	1,612	2,126	15	24

Table 7-1 – continued

Itinerant movements, domestic, transborder and international — NAV CANADA towers

	Total	Air carrier movements		Other commercial movements	Private movements	Government movements	
		Levels I to III and foreign	Levels IV to VI			Civil	Military
number							
Prince George							
Domestic	2,629	1,436	525	118	477	68	5
Transborder	49	2	0	3	44	0	0
Other international	0	0	0	0	0	0	0
Total	2,678	1,438	525	121	521	68	5
Québec/Jean Lesage International							
Domestic	7,591	3,346	543	2,006	1,182	328	186
Transborder	674	544	0	10	111	2	7
Other international	58	44	0	0	1	0	13
Total	8,323	3,934	543	2,016	1,294	330	206
Regina International							
Domestic	3,930	1,876	747	100	623	177	407
Transborder	209	126	4	3	76	0	0
Other international	0	0	0	0	0	0	0
Total	4,139	2,002	751	103	699	177	407
Saskatoon/John G Diefenbaker International							
Domestic	5,271	2,820	826	370	559	363	333
Transborder	200	135	9	0	52	0	4
Other international	0	0	0	0	0	0	0
Total	5,471	2,955	835	370	611	363	337
Sault Ste. Marie							
Domestic	2,680	801	259	1,282	252	52	34
Transborder	68	8	4	3	53	0	0
Other international	0	0	0	0	0	0	0
Total	2,748	809	263	1,285	305	52	34
St. John's International							
Domestic	3,122	1,498	1,225	76	129	137	57
Transborder	267	143	0	5	33	0	86
Other international	282	138	3	15	28	0	98
Total	3,671	1,779	1,228	96	190	137	241
St-Jean							
Domestic	5,878	97	186	579	3,145	22	1,849
Transborder	1	0	0	0	1	0	0
Other international	0	0	0	0	0	0	0
Total	5,879	97	186	579	3,146	22	1,849
Sudbury							
Domestic	3,487	1,409	1,257	105	356	261	99
Transborder	52	6	0	1	44	1	0
Other international	0	0	0	0	0	0	0
Total	3,539	1,415	1,257	106	400	262	99
Thunder Bay							
Domestic	5,409	3,318	838	609	313	203	128
Transborder	229	123	12	2	89	1	2
Other international	0	0	0	0	0	0	0
Total	5,638	3,441	850	611	402	204	130
Toronto/Buttonville Municipal							
Domestic	8,513	415	718	4,883	2,427	67	3
Transborder	345	68	41	18	216	2	0
Other international	0	0	0	0	0	0	0
Total	8,858	483	759	4,901	2,643	69	3
Toronto/City Centre							
Domestic	5,330	830	1,562	2,001	872	22	43
Transborder	228	8	27	2	188	0	3
Other international	1	0	0	0	1	0	0
Total	5,559	838	1,589	2,003	1,061	22	46

Table 7-1 – continued

Itinerant movements, domestic, transborder and international — NAV CANADA towers

	Total	Air carrier movements		Other commercial movements	Private movements	Government movements	
		Levels I to III and foreign	Levels IV to VI			Civil	Military
	number						
Toronto/Lester B Pearson International							
Domestic	18,379	17,427	356	80	437	47	32
Transborder	15,751	14,681	100	81	883	0	6
Other international	4,437	4,405	3	8	20	0	1
Total	38,567	36,513	459	169	1,340	47	39
Vancouver Harbour							
Domestic	7,168	5,967	623	291	279	8	0
Transborder	152	98	10	3	41	0	0
Other international	0	0	0	0	0	0	0
Total	7,320	6,065	633	294	320	8	0
Vancouver International							
Domestic	24,877	20,934	2,245	339	1,031	310	18
Transborder	6,965	6,286	22	6	645	2	4
Other international	1,956	1,861	75	1	17	1	1
Total	33,798	29,081	2,342	346	1,693	313	23
Victoria International							
Domestic	9,548	3,061	3,306	1,031	2,005	48	97
Transborder	1,129	455	40	1	627	0	6
Other international	50	2	18	2	28	0	0
Total	10,727	3,518	3,364	1,034	2,660	48	103
Whitehorse International							
Domestic	2,308	853	848	19	525	44	19
Transborder	189	26	9	2	150	0	2
Other international	12	9	0	1	2	0	0
Total	2,509	888	857	22	677	44	21
Windsor							
Domestic	1,709	561	760	79	285	19	5
Transborder	176	85	16	7	67	0	1
Other international	8	2	4	0	1	1	0
Total	1,893	648	780	86	353	20	6
Winnipeg/James Armstrong Richardson International							
Domestic	11,116	9,005	672	116	451	380	492
Transborder	1,325	1,145	8	8	148	2	14
Other international	14	13	0	0	1	0	0
Total	12,455	10,163	680	124	600	382	506
Winnipeg/St. Andrews							
Domestic	3,922	420	1,820	1,175	501	2	4
Transborder	4	1	1	0	2	0	0
Other international	0	0	0	0	0	0	0
Total	3,926	421	1,821	1,175	503	2	4
Yellowknife							
Domestic	5,207	3,851	685	79	380	104	108
Transborder	16	0	1	0	12	0	3
Other international	0	0	0	0	0	0	0
Total	5,223	3,851	686	79	392	104	111
Total of NAV CANADA towers (42)							
Domestic	270,714	135,398	42,039	45,447	37,215	5,015	5,600
Transborder	45,802	38,400	581	353	6,132	21	315
Other international	11,134	10,068	281	88	472	5	220
Total	327,650	183,866	42,901	45,888	43,819	5,041	6,135

Table 7-2
Itinerant movements, domestic, transborder and international — NAV CANADA flight service stations

	Total	Air carrier movements		Other commercial movements	Private movements	Government movements	
		Levels I to III and foreign	Levels IV to VI			Civil	Military
number							
Brandon Municipal							
Domestic	1,274	157	278	96	253	30	460
Transborder	16	2	3	0	10	0	1
Other international	0	0	0	0	0	0	0
Total	1,290	159	281	96	263	30	461
Campbell River							
Domestic	2,222	701	279	376	810	42	14
Transborder	452	128	0	0	324	0	0
Other international	0	0	0	0	0	0	0
Total	2,674	829	279	376	1,134	42	14
Castlegar							
Domestic	1,878	399	1,227	114	110	19	9
Transborder	14	0	0	0	14	0	0
Other international	0	0	0	0	0	0	0
Total	1,892	399	1,227	114	124	19	9
Charlottetown							
Domestic	2,251	927	216	571	443	40	54
Transborder	181	127	1	1	52	0	0
Other international	4	0	0	0	4	0	0
Total	2,436	1,054	217	572	499	40	54
Churchill							
Domestic	964	780	69	4	84	21	6
Transborder	1	0	0	0	1	0	0
Other international	0	0	0	0	0	0	0
Total	965	780	69	4	85	21	6
Cranbrook							
Domestic	1,237	663	167	120	226	6	55
Transborder	38	5	2	0	30	0	1
Other international	0	0	0	0	0	0	0
Total	1,275	668	169	120	256	6	56
Dawson Creek							
Domestic	793	268	132	223	168	2	0
Transborder	0	0	0	0	0	0	0
Other international	0	0	0	0	0	0	0
Total	793	268	132	223	168	2	0
Deer Lake							
Domestic	1,863	939	732	57	51	71	13
Transborder	3	0	0	0	3	0	0
Other international	11	10	0	1	0	0	0
Total	1,877	949	732	58	54	71	13
Fort McMurray							
Domestic	6,122	3,143	1,654	449	829	44	3
Transborder	7	3	0	0	4	0	0
Other international	0	0	0	0	0	0	0
Total	6,129	3,146	1,654	449	833	44	3
Fort Nelson							
Domestic	1,634	354	532	464	272	6	6
Transborder	5	1	1	0	3	0	0
Other international	0	0	0	0	0	0	0
Total	1,639	355	533	464	275	6	6
Fort St John							
Domestic	2,060	720	842	202	294	2	0
Transborder	3	0	0	0	3	0	0
Other international	0	0	0	0	0	0	0
Total	2,063	720	842	202	297	2	0

Table 7-2 – continued

Itinerant movements, domestic, transborder and international — NAV CANADA flight service stations

	Total	Air carrier movements		Other commercial movements	Private movements	Government movements	
		Levels I to III and foreign	Levels IV to VI			Civil	Military
number							
Fredericton International							
Domestic	2,501	806	679	36	739	103	138
Transborder	207	134	0	0	72	0	1
Other international	13	8	0	0	0	0	5
Total	2,721	948	679	36	811	103	144
Grande Prairie							
Domestic	2,512	1,230	644	45	575	18	0
Transborder	7	1	0	0	6	0	0
Other international	0	0	0	0	0	0	0
Total	2,519	1,231	644	45	581	18	0
High Level							
Domestic	1,069	397	429	133	98	12	0
Transborder	0	0	0	0	0	0	0
Other international	0	0	0	0	0	0	0
Total	1,069	397	429	133	98	12	0
Îles-de-la-Madeleine							
Domestic	445	351	14	12	25	36	7
Transborder	1	0	0	0	1	0	0
Other international	0	0	0	0	0	0	0
Total	446	351	14	12	26	36	7
Inuvik/Mike Zubko							
Domestic	2,267	633	1,448	8	42	44	92
Transborder	8	6	0	0	2	0	0
Other international	0	0	0	0	0	0	0
Total	2,275	639	1,448	8	44	44	92
Iqaluit							
Domestic	2,035	1,474	143	24	54	127	213
Transborder	48	25	12	1	10	0	0
Other international	88	35	0	5	36	4	8
Total	2,171	1,534	155	30	100	131	221
Kamloops							
Domestic	2,617	881	645	541	460	84	6
Transborder	33	5	0	1	27	0	0
Other international	0	0	0	0	0	0	0
Total	2,650	886	645	542	487	84	6
Kenora							
Domestic	1,346	407	565	106	150	58	60
Transborder	147	31	4	2	110	0	0
Other international	0	0	0	0	0	0	0
Total	1,493	438	569	108	260	58	60
Kingston							
Domestic	2,086	536	374	543	570	44	19
Transborder	66	4	1	0	61	0	0
Other international	1	0	0	0	1	0	0
Total	2,153	540	375	543	632	44	19
Kuujuuaq							
Domestic	1,289	1,039	116	23	79	26	6
Transborder	1	0	0	0	1	0	0
Other international	5	1	0	1	3	0	0
Total	1,295	1,040	116	24	83	26	6
Kuujuuarapik							
Domestic	505	481	12	4	2	6	0
Transborder	0	0	0	0	0	0	0
Other international	0	0	0	0	0	0	0
Total	505	481	12	4	2	6	0
La Grande Rivière							
Domestic	812	601	152	15	38	6	0
Transborder	0	0	0	0	0	0	0
Other international	0	0	0	0	0	0	0
Total	812	601	152	15	38	6	0

Table 7-2 – continued

Itinerant movements, domestic, transborder and international — NAV CANADA flight service stations

	Total	Air carrier movements		Other commercial movements	Private movements	Government movements	
		Levels I to III and foreign	Levels IV to VI			Civil	Military
number							
La Ronge							
Domestic	1,642	1,176	20	52	86	205	103
Transborder	2	0	0	0	2	0	0
Other international	0	0	0	0	0	0	0
Total	1,644	1,176	20	52	88	205	103
Lethbridge							
Domestic	1,768	526	54	493	580	14	101
Transborder	140	10	8	3	112	0	7
Other international	0	0	0	0	0	0	0
Total	1,908	536	62	496	692	14	108
Lloydminster							
Domestic	890	134	311	20	390	27	8
Transborder	0	0	0	0	0	0	0
Other international	0	0	0	0	0	0	0
Total	890	134	311	20	390	27	8
Medicine Hat							
Domestic	1,220	660	100	131	280	12	37
Transborder	10	4	0	0	5	1	0
Other international	0	0	0	0	0	0	0
Total	1,230	664	100	131	285	13	37
Mont-Joli							
Domestic	417	310	7	26	61	10	3
Transborder	2	0	0	0	2	0	0
Other international	0	0	0	0	0	0	0
Total	419	310	7	26	63	10	3
Nanaimo							
Domestic	2,534	490	731	224	1,028	45	16
Transborder	186	11	1	2	170	0	2
Other international	0	0	0	0	0	0	0
Total	2,720	501	732	226	1,198	45	18
Norman Wells							
Domestic	1,984	843	729	70	290	45	7
Transborder	0	0	0	0	0	0	0
Other international	0	0	0	0	0	0	0
Total	1,984	843	729	70	290	45	7
North Bay							
Domestic	2,046	549	394	471	336	161	135
Transborder	82	8	4	3	67	0	0
Other international	0	0	0	0	0	0	0
Total	2,128	557	398	474	403	161	135
Ottawa/Gatineau							
Domestic	1,686	45	327	334	813	156	11
Transborder	8	0	1	0	7	0	0
Other international	0	0	0	0	0	0	0
Total	1,694	45	328	334	820	156	11
Peace River							
Domestic	837	282	301	90	144	16	4
Transborder	2	0	0	0	2	0	0
Other international	0	0	0	0	0	0	0
Total	839	282	301	90	146	16	4
Penticton							
Domestic	2,153	370	871	150	647	18	97
Transborder	69	2	2	0	65	0	0
Other international	0	0	0	0	0	0	0
Total	2,222	372	873	150	712	18	97

Table 7-2 – continued

Itinerant movements, domestic, transborder and international — NAV CANADA flight service stations

	Total	Air carrier movements		Other commercial movements	Private movements	Government movements	
		Levels I to III and foreign	Levels IV to VI			Civil	Military
number							
Port Hardy							
Domestic	2,425	1,991	152	22	165	69	26
Transborder	152	8	0	0	144	0	0
Other international	0	0	0	0	0	0	0
Total	2,577	1,999	152	22	309	69	26
Prince Albert							
Domestic	1,874	1,160	37	149	299	178	51
Transborder	2	1	0	0	1	0	0
Other international	0	0	0	0	0	0	0
Total	1,876	1,161	37	149	300	178	51
Prince Rupert							
Domestic	426	254	81	17	51	22	1
Transborder	35	6	0	1	27	0	1
Other international	2	0	0	0	2	0	0
Total	463	260	81	18	80	22	2
Rankin Inlet							
Domestic	1,649	1,353	249	4	33	8	2
Transborder	1	1	0	0	0	0	0
Other international	0	0	0	0	0	0	0
Total	1,650	1,354	249	4	33	8	2
Red Deer Regional							
Domestic	2,092	467	811	148	626	18	22
Transborder	21	7	6	0	8	0	0
Other international	0	0	0	0	0	0	0
Total	2,113	474	817	148	634	18	22
Rouyn-Noranda							
Domestic	878	442	134	86	190	26	0
Transborder	0	0	0	0	0	0	0
Other international	0	0	0	0	0	0	0
Total	878	442	134	86	190	26	0
Saint John							
Domestic	1,862	913	307	258	348	10	26
Transborder	98	15	0	2	81	0	0
Other international	3	0	0	0	3	0	0
Total	1,963	928	307	260	432	10	26
Sept-Îles							
Domestic	2,251	1,409	560	54	165	54	9
Transborder	11	1	0	1	9	0	0
Other international	0	0	0	0	0	0	0
Total	2,262	1,410	560	55	174	54	9
Sioux Lookout							
Domestic	2,930	2,438	305	69	101	11	6
Transborder	60	0	0	0	60	0	0
Other international	0	0	0	0	0	0	0
Total	2,990	2,438	305	69	161	11	6
Smithers							
Domestic	1,098	626	275	8	170	19	0
Transborder	16	2	0	0	14	0	0
Other international	0	0	0	0	0	0	0
Total	1,114	628	275	8	184	19	0
St Anthony							
Domestic	370	53	200	70	24	23	0
Transborder	0	0	0	0	0	0	0
Other international	0	0	0	0	0	0	0
Total	370	53	200	70	24	23	0

Table 7-2 – continued

Itinerant movements, domestic, transborder and international — NAV CANADA flight service stations

	Total	Air carrier movements		Other commercial movements	Private movements	Government movements	
		Levels I to III and foreign	Levels IV to VI			Civil	Military
number							
St Catharines							
Domestic	2,237	19	1,003	57	589	18	551
Transborder	129	22	3	3	101	0	0
Other international	0	0	0	0	0	0	0
Total	2,366	41	1,006	60	690	18	551
Terrace							
Domestic	1,567	788	629	32	102	10	6
Transborder	6	1	0	0	5	0	0
Other international	0	0	0	0	0	0	0
Total	1,573	789	629	32	107	10	6
Thompson							
Domestic	2,895	2,356	288	9	49	188	5
Transborder	5	1	0	0	4	0	0
Other international	0	0	0	0	0	0	0
Total	2,900	2,357	288	9	53	188	5
Timmins							
Domestic	2,343	1,641	303	17	220	152	10
Transborder	11	3	0	0	7	1	0
Other international	0	0	0	0	0	0	0
Total	2,354	1,644	303	17	227	153	10
Val-D'or							
Domestic	1,376	672	137	258	217	92	0
Transborder	0	0	0	0	0	0	0
Other international	0	0	0	0	0	0	0
Total	1,376	672	137	258	217	92	0
Victoria Harbour							
Domestic	4,242	3,967	119	49	49	58	0
Transborder	547	2	0	0	544	0	1
Other international	0	0	0	0	0	0	0
Total	4,789	3,969	119	49	593	58	1
Wabush							
Domestic	783	348	287	30	81	30	7
Transborder	1	0	0	0	1	0	0
Other international	0	0	0	0	0	0	0
Total	784	348	287	30	82	30	7
Whitecourt							
Domestic	980	40	703	104	111	8	14
Transborder	1	0	0	0	1	0	0
Other international	0	0	0	0	0	0	0
Total	981	40	703	104	112	8	14
Williams Lake							
Domestic	1,503	444	508	122	382	22	25
Transborder	11	0	0	0	11	0	0
Other international	0	0	0	0	0	0	0
Total	1,514	444	508	122	393	22	25
Total of all flight service stations (54)							
Domestic	94,740	44,653	22,282	7,790	14,999	2,572	2,444
Transborder	2,846	577	49	20	2,184	2	14
Other international	127	54	0	7	49	4	13
Total	97,713	45,284	22,331	7,817	17,232	2,578	2,471

Table 8-1
Total aircraft movements, peak hour and peak day — NAV CANADA towers

	Rank of movements	Number of movements	Peak hour occurrence			Peak day occurrence	
			Day in month	Hour in day	Number of movements	Day in month	Number of movements
Abbotsford	11	14,313	12	16	169	10	749
Boundary Bay	4	21,941	15	15	131	28	957
Calgary International	3	22,248	16	11	76	16	854
Calgary/Springbank	10	14,682	14	15	93	24	821
Chicoutimi/St-Honoré	28	7,098	31	14	134	27	530
Edmonton City Centre	29	6,745	28	15	39	14	350
Edmonton International	15	11,390	2	16	48	30	450
Edmonton/Villeneuve	34	5,517	15	19	70	31	440
Gander International	30	6,742	28	15	75	28	411
Halifax/Robert L Stanfield International	21	8,950	10	10	53	2	433
Hamilton	26	7,398	24	11	51	10	331
Kelowna	22	8,925	23	16	51	10	390
Kitchener/Waterloo	17	9,968	4	11	80	1	600
Langley	20	9,529	25	11	90	29	452
London	24	8,523	3	18	74	31	457
Moncton/Greater Moncton International	14	12,367	28	20	63	28	748
Montréal/Mirabel International	42	2,619	30	14	222	30	313
Montréal/Pierre Elliott Trudeau International	5	20,552	16	18	76	20	784
Montréal/St-Hubert	9	14,804	21	16	111	21	905
Oshawa	33	5,721	19	10	57	28	368
Ottawa/Macdonald-Cartier International	8	15,121	7	16	77	1	679
Pitt Meadows	13	13,177	23	11	107	1	699
Prince George	39	3,314	22	14	56	22	271
Québec/Jean Lesage International	16	11,163	10	9	71	10	537
Regina International	35	5,469	14	14	41	14	337
Saskatoon/John G Diefenbaker International	23	8,552	7	12	61	29	446
Sault Ste. Marie	36	4,935	15	13	51	10	246
St. John's International	38	3,981	8	13	31	8	238
St-Jean	31	6,595	7	18	153	9	911
Sudbury	37	4,084	15	19	39	15	216
Thunder Bay	25	7,724	21	9	70	2	420
Toronto/Buttonville Municipal	7	17,152	14	12	109	10	942
Toronto/City Centre	18	9,927	10	17	70	1	480
Toronto/Lester B Pearson International	1	38,567	10	18	102	30	1,326
Vancouver Harbour	27	7,322	10	17	35	29	289
Vancouver International	2	33,798	8	12	100	9	1,197
Victoria International	6	18,418	2	11	91	1	825
Whitehorse International	40	3,239	2	11	31	16	161
Windsor	41	2,897	2	11	27	13	166
Winnipeg/James Armstrong Richardson International	12	13,865	14	15	56	9	600
Winnipeg/St. Andrews	19	9,832	9	10	93	9	556
Yellowknife	32	5,989	14	17	38	22	281

Table 8-2
Total aircraft movements, peak hour and peak day — NAV CANADA flight service stations

	Rank of movements	Number of movements	Peak hour occurrence			Peak day occurrence	
			Day in month	Hour in day	Number of movements	Day in month	Number of movements
Brandon Municipal	19	2,506	17	10	62	23	277
Campbell River	10	3,444	10	15	42	1	207
Castlegar	27	2,030	17	14	27	13	140
Charlottetown	8	3,664	10	19	28	6	231
Churchill	46	983	17	14	11	20	48
Cranbrook	38	1,393	6	15	21	6	94
Dawson Creek	41	1,297	1	13	37	1	119
Deer Lake	29	1,877	17	18	14	1	92
Fort McMurray	1	7,533	11	20	54	22	329
Fort Nelson	34	1,699	5	17	19	16	90
Fort St John	23	2,277	17	10	19	28	124
Fredericton International	12	3,329	14	14	30	28	209
Grande Prairie	15	3,065	30	15	40	29	176
High Level	44	1,107	22	10	12	22	56
Îles-de-la-Madeleine	53	446	31	12	6	29	24
Inuvik/Mike Zubko	21	2,403	19	16	47	16	124
Iqaluit	25	2,215	16	14	21	15	125
Kamloops	4	4,010	2	14	39	18	220
Kenora	37	1,561	2	18	14	3	105
Kingston	5	3,745	30	16	56	28	239
Kuujuuaq	40	1,345	20	14	13	19	65
Kuujuuarapik	51	505	24	13	6	21	25
La Grande Rivière	48	832	21	11	15	21	60
La Ronge	32	1,738	20	10	25	28	99
Lethbridge	14	3,112	4	17	55	4	414
Lloydminster	39	1,366	30	16	27	30	118
Medicine Hat	30	1,790	3	8	33	3	100
Mont-Joli	52	485	12	9	13	12	45
Nanaimo	11	3,344	2	14	36	2	167
Norman Wells	26	2,106	27	10	16	27	132
North Bay	9	3,566	8	14	47	10	250
Ottawa/Gatineau	6	3,742	4	11	73	4	312
Peace River	47	869	22	20	13	22	66
Penticton	13	3,172	14	15	45	14	199
Port Hardy	18	2,605	2	18	19	2	121
Prince Albert	28	1,964	31	20	21	11	105
Prince Rupert	50	565	14	15	22	11	39
Rankin Inlet	36	1,676	13	23	19	13	94
Red Deer Regional	7	3,669	29	13	48	28	291
Rouyn-Noranda	45	1,100	15	10	26	15	103
Saint John	24	2,257	6	16	26	1	123
Sept-Îles	22	2,348	5	12	27	9	113
Sioux Lookout	16	3,040	25	16	20	16	138
Smithers	42	1,148	8	10	11	15	61
St Anthony	54	370	21	9	7	13	22
St Catharines	3	4,408	18	9	64	18	306
Terrace	35	1,691	21	14	28	27	84
Thompson	17	2,942	23	11	18	3	129
Timmins	20	2,492	15	20	27	16	148
Val-D'or	33	1,714	19	14	31	7	92
Victoria Harbour	2	4,789	2	14	24	9	193
Wabush	49	796	14	11	18	14	41
Whitecourt	43	1,141	30	9	23	30	111
Williams Lake	31	1,762	27	20	36	15	132

Table 9-1
Itinerant aircraft movements, peak hour and peak day — NAV CANADA towers

	Rank of movements	Number of movements	Peak hour occurrence			Peak day occurrence	
			Day in month	Hour in day	Number of movements	Day in month	Number of movements
Abbotsford	17	5,988	12	18	36	14	302
Boundary Bay	10	8,721	15	15	53	23	431
Calgary International	3	22,002	8	18	66	16	814
Calgary/Springbank	16	6,122	22	15	43	22	318
Chicoutimi/St-Honoré	35	3,100	27	13	36	27	210
Edmonton City Centre	19	5,697	14	17	29	15	298
Edmonton International	7	10,901	16	17	35	29	422
Edmonton/Villeneuve	42	1,381	1	11	13	30	88
Gander International	34	3,242	28	14	19	24	175
Halifax/Robert L Stanfield International	12	8,249	2	12	27	2	319
Hamilton	28	4,516	3	10	18	30	206
Kelowna	25	5,213	15	13	29	30	213
Kitchener/Waterloo	26	4,996	4	11	36	1	282
Langley	29	4,355	1	14	28	30	215
London	23	5,313	2	11	29	27	256
Moncton/Greater Moncton International	14	7,277	16	15	34	10	378
Montréal/Mirabel International	41	1,676	5	16	19	28	85
Montréal/Pierre Elliott Trudeau International	4	20,552	16	18	76	20	784
Montréal/St-Hubert	15	6,855	28	10	38	20	377
Oshawa	36	2,945	18	11	27	19	179
Ottawa/Macdonald-Cartier International	6	10,931	21	16	45	1	441
Pitt Meadows	27	4,697	12	14	51	12	277
Prince George	38	2,678	15	12	18	15	141
Québec/Jean Lesage International	11	8,323	10	11	37	10	355
Regina International	30	4,139	1	9	25	2	193
Saskatoon/John G Diefenbaker International	22	5,471	14	14	26	16	248
Sault Ste. Marie	37	2,748	9	17	18	13	128
St. John's International	32	3,671	6	15	14	10	147
St-Jean	18	5,879	7	18	145	9	855
Sudbury	33	3,539	20	13	21	13	162
Thunder Bay	20	5,638	3	9	25	7	241
Toronto/Buttonville Municipal	9	8,858	11	12	61	10	444
Toronto/City Centre	21	5,559	31	9	35	10	265
Toronto/Lester B Pearson International	1	38,567	10	18	102	30	1,326
Vancouver Harbour	13	7,320	10	17	35	29	289
Vancouver International	2	33,798	8	12	100	9	1,197
Victoria International	8	10,727	2	11	45	23	436
Whitehorse International	39	2,509	1	16	22	2	136
Windsor	40	1,893	1	15	12	1	126
Winnipeg/James Armstrong Richardson International	5	12,455	29	15	43	23	501
Winnipeg/St. Andrews	31	3,926	3	16	24	3	220
Yellowknife	24	5,223	13	14	22	22	225

Table 9-2
Itinerant aircraft movements, peak hour and peak day — NAV CANADA flight service stations

	Rank of movements	Number of movements	Peak hour occurrence			Peak day occurrence	
			Day in month	Hour in day	Number of movements	Day in month	Number of movements
Brandon Municipal	37	1,290	23	10	22	16	116
Campbell River	7	2,674	11	13	18	22	119
Castlegar	25	1,892	17	14	27	13	140
Charlottetown	11	2,436	11	11	15	10	139
Churchill	43	965	11	9	9	16	41
Cranbrook	38	1,275	21	11	19	21	87
Dawson Creek	48	793	3	7	11	28	45
Deer Lake	26	1,877	17	18	14	1	92
Fort McMurray	1	6,129	22	16	41	22	293
Fort Nelson	31	1,639	28	9	15	16	90
Fort St John	21	2,063	27	10	15	1	110
Fredericton International	5	2,721	5	11	16	22	131
Grande Prairie	10	2,519	22	9	21	16	131
High Level	41	1,069	22	10	12	22	56
Îles-de-la-Madeleine	52	446	31	12	6	29	24
Inuvik/Mike Zubko	14	2,275	22	11	17	22	111
Iqaluit	17	2,171	15	16	20	15	125
Kamloops	8	2,650	3	11	21	3	129
Kenora	34	1,493	2	18	14	3	105
Kingston	18	2,153	26	14	22	26	112
Kuujuuaq	36	1,295	31	11	11	21	56
Kuujuuarapik	50	505	24	13	6	21	25
La Grande Rivière	47	812	21	11	11	21	56
La Ronge	30	1,644	3	13	13	1	79
Lethbridge	24	1,908	4	17	25	4	112
Lloydminster	44	890	2	15	8	29	55
Medicine Hat	39	1,230	30	21	26	11	75
Mont-Joli	53	419	7	7	5	7	25
Nanaimo	6	2,720	24	14	20	29	126
Norman Wells	22	1,984	27	10	16	27	116
North Bay	19	2,128	15	11	19	15	121
Ottawa/Gatineau	28	1,694	4	11	23	4	146
Peace River	46	839	1	17	7	15	53
Penticton	16	2,222	15	16	23	16	173
Port Hardy	9	2,577	2	18	19	2	121
Prince Albert	27	1,876	2	12	14	11	105
Prince Rupert	51	463	14	15	6	31	31
Rankin Inlet	29	1,650	9	13	13	17	80
Red Deer Regional	20	2,113	28	13	25	28	133
Rouyn-Noranda	45	878	7	15	9	7	57
Saint John	23	1,963	7	19	14	1	111
Sept-Îles	15	2,262	6	17	13	9	113
Sioux Lookout	3	2,990	14	8	16	16	134
Smithers	40	1,114	16	12	10	15	61
St Anthony	54	370	21	9	7	13	22
St Catharines	12	2,366	31	15	29	31	143
Terrace	32	1,573	26	15	11	2	68
Thompson	4	2,900	23	11	18	3	129
Timmins	13	2,354	16	16	16	30	118
Val-D'or	35	1,376	5	12	11	7	84
Victoria Harbour	2	4,789	2	14	24	9	193
Wabush	49	784	20	10	9	16	39
Whitecourt	42	981	28	16	11	28	65
Williams Lake	33	1,514	15	11	16	15	108

Table 10-1
Local movements, peak hour and peak day — NAV CANADA towers

	Rank of movements	Number of movements	Peak hour occurrence			Peak day occurrence	
			Day in month	Hour in day	Number of movements	Day in month	Number of movements
Abbotsford	4	8,325	12	16	146	10	564
Boundary Bay	1	13,220	7	17	106	28	592
Calgary International	38	246	16	11	18	16	40
Calgary/Springbank	2	8,560	5	11	60	17	534
Chicoutimi/St-Honoré	15	3,998	31	14	122	31	344
Edmonton City Centre	27	1,048	10	12	32	10	78
Edmonton International	36	489	20	22	16	20	48
Edmonton/Villeneuve	14	4,136	31	19	64	31	360
Gander International	17	3,500	28	15	56	28	262
Halifax/Robert L Stanfield International	33	701	10	10	32	2	114
Hamilton	20	2,882	24	11	40	18	164
Kelowna	16	3,712	10	14	36	6	228
Kitchener/Waterloo	11	4,972	1	9	48	1	318
Langley	9	5,174	25	11	76	31	268
London	18	3,210	3	18	52	31	222
Moncton/Greater Moncton International	10	5,090	7	14	44	28	404
Montréal/Mirabel International	29	943	30	14	219	30	241
Montréal/Pierre Elliott Trudeau International	0	0	0	0	0	0	0
Montréal/St-Hubert	6	7,949	9	21	84	21	570
Oshawa	22	2,776	27	15	42	28	224
Ottawa/Macdonald-Cartier International	13	4,190	7	16	52	7	272
Pitt Meadows	3	8,480	1	15	80	1	476
Prince George	34	636	22	14	44	22	136
Québec/Jean Lesage International	21	2,840	10	9	42	1	194
Regina International	26	1,330	14	14	28	14	146
Saskatoon/John G Diefenbaker International	19	3,081	7	12	48	8	204
Sault Ste. Marie	23	2,187	15	13	38	20	130
St. John's International	37	310	8	13	20	8	106
St-Jean	32	716	4	14	34	29	72
Sudbury	35	545	15	19	22	15	64
Thunder Bay	24	2,086	21	9	58	11	190
Toronto/Buttontville Municipal	5	8,294	10	8	70	10	498
Toronto/City Centre	12	4,368	14	12	46	1	242
Toronto/Lester B Pearson International	0	0	0	0	0	0	0
Vancouver Harbour	39	2	19	16	2	19	2
Vancouver International	0	0	0	0	0	0	0
Victoria International	7	7,691	29	15	52	1	400
Whitehorse International	31	730	29	10	22	24	82
Windsor	28	1,004	21	14	24	13	90
Winnipeg/James Armstrong Richardson International	25	1,410	9	9	26	9	142
Winnipeg/St. Andrews	8	5,906	9	10	72	9	350
Yellowknife	30	766	30	20	20	30	98

Table 10-2
Local movements, peak hour and peak day — NAV CANADA flight service stations

	Rank of movements	Number of movements	Peak hour occurrence			Peak day occurrence	
			Day in month	Hour in day	Number of movements	Day in month	Number of movements
Brandon Municipal	9	1,216	17	10	42	23	182
Campbell River	12	770	10	15	40	1	90
Castlegar	26	138	25	14	18	25	24
Charlottetown	8	1,228	2	12	20	6	120
Churchill	48	18	17	14	6	20	10
Cranbrook	30	118	6	15	18	6	42
Dawson Creek	17	504	1	13	36	1	78
Deer Lake	0	0	0	0	0	0	0
Fort McMurray	6	1,404	11	20	44	29	80
Fort Nelson	37	60	5	17	10	5	14
Fort St John	23	214	18	17	14	18	42
Fredericton International	14	608	14	14	20	29	104
Grande Prairie	16	546	28	17	26	28	62
High Level	42	38	13	15	8	20	18
Îles-de-la-Madeleine	0	0	0	0	0	0	0
Inuvik/Mike Zubko	27	128	19	16	38	19	38
Iqaluit	40	44	21	10	6	21	16
Kamloops	7	1,360	2	14	30	18	124
Kenora	35	68	6	11	8	6	14
Kingston	3	1,592	30	16	48	28	128
Kuujuuaq	39	50	15	18	8	20	12
Kuujuuarapik	0	0	0	0	0	0	0
La Grande Rivière	47	20	20	17	4	1	4
La Ronge	32	94	20	10	12	28	24
Lethbridge	10	1,204	3	11	48	4	302
Lloydminster	18	476	24	14	22	30	66
Medicine Hat	15	560	3	8	30	17	54
Mont-Joli	36	66	12	8	12	12	26
Nanaimo	13	624	9	11	22	10	56
Norman Wells	28	122	11	16	10	1	18
North Bay	5	1,438	8	14	36	8	146
Ottawa/Gatineau	1	2,048	4	11	50	4	166
Peace River	44	30	22	20	10	22	16
Penticton	11	950	14	15	40	22	118
Port Hardy	45	28	24	10	14	24	18
Prince Albert	33	88	31	20	16	31	34
Prince Rupert	31	102	14	15	16	11	30
Rankin Inlet	46	26	13	23	16	13	16
Red Deer Regional	4	1,556	29	13	32	29	170
Rouyn-Noranda	22	222	15	10	22	15	70
Saint John	20	294	6	16	20	6	38
Sept-Îles	34	86	5	12	18	5	26
Sioux Lookout	38	50	25	16	12	25	16
Smithers	43	34	8	10	6	8	10
St Anthony	0	0	0	0	0	0	0
St Catharines	2	2,042	18	9	48	19	184
Terrace	29	118	17	16	20	17	22
Thompson	41	42	29	22	10	29	10
Timmins	25	138	15	20	24	16	56
Val-D'or	19	338	19	14	30	19	68
Victoria Harbour	0	0	0	0	0	0	0
Wabush	49	12	14	11	12	14	12
Whitecourt	24	160	30	9	16	31	52
Williams Lake	21	248	27	20	32	27	32

Table 11-1
Local movements - civil, peak hour and peak day — NAV CANADA towers

	Rank of movements	Number of movements	Peak hour occurrence			Peak day occurrence	
			Day in month	Hour in day	Number of movements	Day in month	Number of movements
Abbotsford	7	7,337	12	16	90	1	474
Boundary Bay	1	13,220	7	17	106	28	592
Calgary International	38	246	16	11	18	16	40
Calgary/Springbank	2	8,558	5	11	60	17	534
Chicoutimi/St-Honoré	15	3,998	31	14	122	31	344
Edmonton City Centre	26	1,046	10	12	32	10	78
Edmonton International	36	471	20	22	16	28	48
Edmonton/Villeneuve	13	4,136	31	19	64	31	360
Gander International	17	3,284	21	13	50	13	258
Halifax/Robert L Stanfield International	34	603	10	10	32	2	114
Hamilton	20	2,840	24	11	40	18	164
Kelowna	16	3,686	10	14	36	6	228
Kitchener/Waterloo	11	4,962	1	9	48	1	318
Langley	9	5,170	25	11	76	31	268
London	18	3,210	3	18	52	31	222
Moncton/Greater Moncton International	10	5,090	7	14	44	28	404
Montréal/Mirabel International	29	923	30	14	219	30	241
Montréal/Pierre Elliott Trudeau International	0	0	0	0	0	0	0
Montréal/St-Hubert	5	7,909	9	21	84	21	570
Oshawa	22	2,774	27	15	42	28	224
Ottawa/Macdonald-Cartier International	14	4,112	7	16	52	7	256
Pitt Meadows	3	8,480	1	15	80	1	476
Prince George	32	636	22	14	44	22	136
Québec/Jean Lesage International	21	2,834	10	9	42	1	194
Regina International	25	1,258	14	14	28	14	146
Saskatoon/John G Diefenbaker International	19	2,913	7	12	48	8	204
Sault Ste. Marie	23	2,179	15	13	38	20	130
St. John's International	37	278	8	13	20	8	106
St-Jean	31	716	4	14	34	29	72
Sudbury	35	545	15	19	22	15	64
Thunder Bay	24	2,044	21	9	58	11	190
Toronto/Buttonville Municipal	4	8,294	10	8	70	10	498
Toronto/City Centre	12	4,368	14	12	46	1	242
Toronto/Lester B Pearson International	0	0	0	0	0	0	0
Vancouver Harbour	39	2	19	16	2	19	2
Vancouver International	0	0	0	0	0	0	0
Victoria International	6	7,508	29	15	52	3	384
Whitehorse International	30	722	29	10	22	24	74
Windsor	28	998	21	14	24	13	90
Winnipeg/James Armstrong Richardson International	27	1,038	20	14	24	9	110
Winnipeg/St. Andrews	8	5,906	9	10	72	9	350
Yellowknife	33	612	30	20	20	30	64

Table 11-2
Local movements - civil, peak hour and peak day — NAV CANADA flight service stations

	Rank of movements	Number of movements	Peak hour occurrence			Peak day occurrence	
			Day in month	Hour in day	Number of movements	Day in month	Number of movements
Brandon Municipal	26	134	29	18	20	7	26
Campbell River	11	770	10	15	40	1	90
Castlegar	24	138	25	14	18	25	24
Charlottetown	8	1,218	2	12	20	6	120
Churchill	46	18	17	14	6	20	10
Cranbrook	29	116	6	15	18	6	42
Dawson Creek	16	504	1	13	36	1	78
Deer Lake	0	0	0	0	0	0	0
Fort McMurray	6	1,404	11	20	44	29	80
Fort Nelson	36	60	5	17	10	5	14
Fort St John	21	214	18	17	14	18	42
Fredericton International	13	580	14	14	20	29	104
Grande Prairie	15	546	28	17	26	28	62
High Level	41	38	13	15	8	20	18
Îles-de-la-Madeleine	0	0	0	0	0	0	0
Inuvik/Mike Zubko	49	6	17	22	4	17	4
Iqaluit	39	44	21	10	6	21	16
Kamloops	7	1,360	2	14	30	18	124
Kenora	35	64	6	11	8	6	14
Kingston	3	1,584	30	16	48	28	128
Kuujuuaq	37	50	15	18	8	20	12
Kuujuuarapik	0	0	0	0	0	0	0
La Grande Rivière	45	20	20	17	4	1	4
La Ronge	31	94	20	10	12	28	24
Lethbridge	9	1,126	3	11	48	4	290
Lloydminster	17	476	24	14	22	30	66
Medicine Hat	14	552	3	8	30	17	54
Mont-Joli	34	66	12	8	12	12	26
Nanaimo	12	624	9	11	22	10	56
Norman Wells	27	122	11	16	10	1	18
North Bay	5	1,422	8	14	36	8	146
Ottawa/Gatineau	1	2,048	4	11	50	4	166
Peace River	43	30	22	20	10	22	16
Penticton	10	948	14	15	40	22	118
Port Hardy	47	14	8	11	4	8	4
Prince Albert	32	88	31	20	16	31	34
Prince Rupert	30	102	14	15	16	11	30
Rankin Inlet	44	26	13	23	16	13	16
Red Deer Regional	4	1,554	29	13	32	29	170
Rouyn-Noranda	20	222	15	10	22	15	70
Saint John	19	288	6	16	20	6	38
Sept-Îles	33	86	5	12	18	5	26
Sioux Lookout	38	50	25	16	12	25	16
Smithers	42	34	8	10	6	8	10
St Anthony	0	0	0	0	0	0	0
St Catharines	2	2,042	18	9	48	19	184
Terrace	28	118	17	16	20	17	22
Thompson	40	42	29	22	10	29	10
Timmins	25	138	15	20	24	16	56
Val-D'or	18	338	19	14	30	19	68
Victoria Harbour	0	0	0	0	0	0	0
Wabush	48	12	14	11	12	14	12
Whitecourt	23	160	30	9	16	31	52
Williams Lake	22	214	27	20	32	27	32

Table 12-1
Local movements - military, peak hour and peak day — NAV CANADA towers

	Rank of movements	Number of movements	Peak hour occurrence			Peak day occurrence	
			Day in month	Hour in day	Number of movements	Day in month	Number of movements
Abbotsford	1	988	11	17	80	11	334
Boundary Bay	0	0	0	0	0	0	0
Calgary International	0	0	0	0	0	0	0
Calgary/Springbank	24	2	6	12	1	6	2
Chicoutimi/St-Honoré	0	0	0	0	0	0	0
Edmonton City Centre	23	2	15	11	2	15	2
Edmonton International	16	18	5	15	4	20	6
Edmonton/Villeneuve	0	0	0	0	0	0	0
Gander International	3	216	2	9	14	2	48
Halifax/Robert L Stanfield International	7	98	14	12	14	14	28
Hamilton	10	42	28	11	18	28	36
Kelowna	14	26	5	16	8	5	14
Kitchener/Waterloo	17	10	11	12	4	11	4
Langley	22	4	30	13	4	30	4
London	0	0	0	0	0	0	0
Moncton/Greater Moncton International	0	0	0	0	0	0	0
Montréal/Mirabel International	15	20	21	13	9	21	16
Montréal/Pierre Elliott Trudeau International	0	0	0	0	0	0	0
Montréal/St-Hubert	12	40	24	15	18	24	18
Oshawa	25	2	6	12	2	6	2
Ottawa/Macdonald-Cartier International	8	78	27	12	12	21	18
Pitt Meadows	0	0	0	0	0	0	0
Prince George	0	0	0	0	0	0	0
Québec/Jean Lesage International	20	6	17	16	6	17	6
Regina International	9	72	25	18	8	24	12
Saskatoon/John G Diefenbaker International	5	168	1	17	16	17	50
Sault Ste. Marie	18	8	9	17	4	9	4
St. John's International	13	32	30	13	20	30	20
St-Jean	0	0	0	0	0	0	0
Sudbury	0	0	0	0	0	0	0
Thunder Bay	11	42	23	14	6	23	12
Toronto/Buttonville Municipal	0	0	0	0	0	0	0
Toronto/City Centre	0	0	0	0	0	0	0
Toronto/Lester B Pearson International	0	0	0	0	0	0	0
Vancouver Harbour	0	0	0	0	0	0	0
Vancouver International	0	0	0	0	0	0	0
Victoria International	4	183	13	23	20	1	36
Whitehorse International	19	8	24	16	8	24	8
Windsor	21	6	16	14	6	16	6
Winnipeg/James Armstrong Richardson International	2	372	3	12	20	3	52
Winnipeg/St. Andrews	0	0	0	0	0	0	0
Yellowknife	6	154	29	10	14	30	34

Table 12-2
Local movements - military, peak hour and peak day — NAV CANADA flight service stations

	Rank of movements	Number of movements	Peak hour occurrence			Peak day occurrence	
			Day in month	Hour in day	Number of movements	Day in month	Number of movements
Brandon Municipal	1	1,082	17	10	42	23	170
Campbell River	0	0	0	0	0	0	0
Castlegar	0	0	0	0	0	0	0
Charlottetown	8	10	31	10	6	31	6
Churchill	0	0	0	0	0	0	0
Cranbrook	13	2	31	17	2	31	2
Dawson Creek	0	0	0	0	0	0	0
Deer Lake	0	0	0	0	0	0	0
Fort McMurray	0	0	0	0	0	0	0
Fort Nelson	0	0	0	0	0	0	0
Fort St John	0	0	0	0	0	0	0
Fredericton International	5	28	17	10	14	17	28
Grande Prairie	0	0	0	0	0	0	0
High Level	0	0	0	0	0	0	0
Îles-de-la-Madeleine	0	0	0	0	0	0	0
Inuvik/Mike Zubko	2	122	19	16	38	19	38
Iqaluit	0	0	0	0	0	0	0
Kamloops	0	0	0	0	0	0	0
Kenora	12	4	9	14	4	9	4
Kingston	10	8	18	11	8	18	8
Kuujuuaq	0	0	0	0	0	0	0
Kuujuuarapik	0	0	0	0	0	0	0
La Grande Rivière	0	0	0	0	0	0	0
La Ronge	0	0	0	0	0	0	0
Lethbridge	3	78	3	17	18	3	26
Lloydminster	0	0	0	0	0	0	0
Medicine Hat	9	8	3	18	4	3	6
Mont-Joli	0	0	0	0	0	0	0
Nanaimo	0	0	0	0	0	0	0
Norman Wells	0	0	0	0	0	0	0
North Bay	6	16	2	10	6	2	6
Ottawa/Gatineau	0	0	0	0	0	0	0
Peace River	0	0	0	0	0	0	0
Penticton	14	2	3	17	2	3	2
Port Hardy	7	14	24	10	14	24	14
Prince Albert	0	0	0	0	0	0	0
Prince Rupert	0	0	0	0	0	0	0
Rankin Inlet	0	0	0	0	0	0	0
Red Deer Regional	15	2	28	11	2	28	2
Rouyn-Noranda	0	0	0	0	0	0	0
Saint John	11	6	14	9	4	14	6
Sept-Îles	0	0	0	0	0	0	0
Sioux Lookout	0	0	0	0	0	0	0
Smithers	0	0	0	0	0	0	0
St Anthony	0	0	0	0	0	0	0
St Catharines	0	0	0	0	0	0	0
Terrace	0	0	0	0	0	0	0
Thompson	0	0	0	0	0	0	0
Timmins	0	0	0	0	0	0	0
Val-D'or	0	0	0	0	0	0	0
Victoria Harbour	0	0	0	0	0	0	0
Wabush	0	0	0	0	0	0	0
Whitecourt	0	0	0	0	0	0	0
Williams Lake	4	34	29	10	28	29	28

Methodology

Survey universe

Coverage

The survey covers all aircraft movements at Canadian airports with NAV CANADA air traffic control towers and flight service stations.

Methodology survey

The Itinerant movement record is designed to capture:

- Aircraft identification
- Aircraft type
- The last station before landing at the reporting airport or the next station after take-off
- Arrival or departure
- Time of movement
- Runway used
- Flight rules (Instrument flight rules or Visual flight rules).

The Local aircraft movement record provides for reports of local movements by:

- Hour
- Single engine aircraft
- Multi-engine aircraft
- Jet aircraft
- Military aircraft
- Date of movement

Processing of aircraft movement statistics involves several stages. Preliminary monthly data by class of operation are released in **Preliminary aircraft movement statistics**, catalogue no. 51F0001P (TP-1496 (NAV CANADA towered airports only)). Data which follow in **Aircraft movement statistics - Monthly** report, catalogue nos. 51-007-X and 51-008-X (TP-141) may contain revisions to the originally released figures. Annual tables, which may reflect further revisions, are released in the publication, **Aircraft movement statistics - Annual** report - TP-577. In particular, data on itinerant movements by type of operation may reflect revisions as various sources of comparative information (data collected from commercial air carriers by the Aviation Statistics Centre, Statistics Canada) become available during the processing cycle. Finally, when revisions are required after the release of TP-577, they are contained in the five year historical summary of subsequent editions of TP-577. These revisions are also reflected in the CANSIM tables, both monthly and annual.

The records are completed daily, based on a twenty-four hour clock running from zero hour to 23:59. The times recorded are Coordinated Universal Time (UTC); however, published statistics are shown in local times. The records are transmitted to the Aviation Statistics Centre.

The Aviation Statistics Centre maintains a data base of parameter files of current information on all registered aircraft. The storage of this information reduces the reporting burden of the survey respondents and limits the element of human error associated with the preparation of source documents.

Other parameter files information includes registered aircraft identifications and their corresponding aircraft types, gross take-off weights, types of power plant (piston, jet or turboprop); whether the aircraft are fixed wing, helicopters or gliders. This information also provides a basis for identifying type of flights (commercial, private and government) and the geographical area in which the flights take place.

The parameter files also include airport environment information against which the airport category is checked; the reported runway is validated and the time difference between UTC and Local is assigned.

Data quality and limitations

Aircraft movement statistics are accumulated from data originating with air traffic control tower units or flight service station personnel. Because staff in these positions are highly trained in factual observation and reporting, the entries in the data bank are of a high quality.

The procedures for reporting aircraft movements on the Daily air traffic records by tower units are described in the NAV CANADA Air traffic control manual of operations (TP 703) Volume 1, Para. 1023 to 1023.5. Definitions for terms used in these paragraphs can be found in the appendix I "Glossary of terms" of this report.

To maintain uniformity in the reporting of source data, ASC issues to air traffic control units an "Air traffic designators" handbook (TP 143) listing the official Transport Canada aircraft type designators and the designators of various domestic and international air carriers. This handbook and another titled "Canada flight supplement" listing various airport codes serve as references to help ensure the reporting of the proper aircraft identity and the point of origin and destination of flights.

The processing system contains editing procedures designed to identify data errors occurring during transcription or during data capture of forms. Identified errors are manually corrected by ASC editing staff.

Errors may occur if an aircraft type code which exists is reported or data captured in error for a flight. For example, the reporting or keying of B727 for a flight actually performed by a B737 may not be detected during the system editing. That the aircraft type information is recorded by highly trained air traffic control tower staff using a common handbook of official aircraft codes will minimize this problem.

Similarly, the breakdown of the data on a geographic basis by use of location codes can be subject to error. For smaller locations, alphanumeric location codes are often used and the sequence of numbers and letters determines the geographic area to which the data are assigned. In some cases, where a sequence error has been introduced into the system either at the reporting unit or at data capture, a domestic movement may be classified as transborder or vice versa. The use of common manuals of location identifiers works to minimize this occurrence.

Factors influencing the data

Roberval – the Flight Service Station closed in November 2006. As of December 2006, Roberval appears in Volume II – Airports without air traffic control towers.

Harmony Airways ceased its operations on April 9, 2007.

Icelandair began regular service from Halifax, Nova Scotia to Iceland on May 17, 2007.

Appendix I

Glossary of terms

Air carrier

Aircraft operators licensed by the Canadian Transportation Agency to transport persons, mail and/or goods by air.

Levels I to III air carriers (Defn 2000) – This includes every Canadian air carrier that, in each of the two calendar years immediately preceding the report year, realized annual gross revenues of \$1,000,000 or more for the air services for which the air carrier held a licence. Also includes foreign air carriers.

Levels IV to VI air carriers (Defn 2000) – Canadian air carriers not classified in report level I-III that, in each of the two calendar years immediately preceding the report year, realized annual gross revenues of less than \$1,000,000 for the air services for which the air carrier held a licence. Since 2000, levels IV and VI are no longer applicable.

Aircraft movement

A take off, a landing, or a simulated approach by an aircraft. ATC Manops amendment 8-8-83. NC-703.

Class of operation

Aircraft movements are classified as either “Itinerant” or “Local”.

Commercial

Flights by aircraft operators licensed by the Canadian Transportation Agency to perform commercial air services. Commercial operations are divided into two categories: **Air carrier** and **Other commercial**.

Domestic itinerant movements

Movements, at a Canadian airport, of aircraft departing to or arriving from another point in Canada.

FSS

Flight service station.

Government – Civil

Aircraft owned by federal, provincial and municipal bodies as well as foreign states, but excluding those owned by crown corporations, boards and commissions. Such aircraft are coded “3” under “Purpose” in the Canadian civil aircraft register.

Government – Military

Aircraft of any branch of the armed forces of any nation.

Gross take-off weight

The maximum weight for which the aircraft is licensed to operate. For operational purposes, all weights are rounded upwards to the next 1,000 kilograms. Thus 3,200 kilograms becomes 4,000 kilograms.

I.F.R. flight

A flight conducted in accordance with Instrument flight rules.

International movements

Movements, at a Canadian airport, of aircraft arriving from or departing to a point outside Canada. International movements are subclassified into “transborder” (to or from a point in the United States including Alaska but excluding Hawaii), and “other international” (to or from points in countries other than Canada and the United States).

Since aircraft movements are reported on the basis of place “arrived from” or “departed to”, an arrival at Mirabel airport from London, England would appear under “other international”. If the same aircraft moved on to Toronto, both the departure at Mirabel and the arrival at Toronto would be shown as “domestic”.

Itinerant movements

At Airports **with** control towers and/or Flight service stations: for the purpose of completing air traffic records, itinerant movements are considered as movements in which aircraft proceed to or arrive from another location; or where aircraft leave the circuit but return without landing at another airport. At Airports **without** control towers: an aircraft movement in which the aircraft arrives from or departs to a point other than the reporting airport; or a movement by an aircraft that leaves the close proximity of an airport and returns without landing at another airport.

Local movements

At Airports **with** control towers and/or Flight service stations: for the purpose of completing air traffic records, local movements are considered as movements in which the aircraft remains in the circuit. At Airports **without** control towers: an aircraft movement in which the aircraft remains in the close proximity of the airport. Local movements are often carried out during training flights (touch-and-go), equipment tests etc.

Other commercial

Flights performed by **Commercial** aircraft operators not included in the **Air carrier** categories. Flying schools, agricultural sprayers, water-bombers, aerial photography and survey, etc.

Power plant

The source of propulsion. For example, piston engines, turbo-propellers and jet engines. “Helicopters”, in this report, include both piston and turboshaft-driven engines.

Private aircraft

Aircraft used solely for private purposes, not for hire and compensation, which are classified as “Private” or “Private Restricted” in the Canadian civil aircraft register or similar registries of other countries. Owners include individuals, groups and business firms.

Runway 88

Through control zone flights, i.e. flights which communicate with the tower while transiting the tower control zone to another destination without landing at the reporting airport.

Data for these runways are not included in the grand total.

Simulated approaches

Movements that are either missed instrument or practice instrument approaches without landing.

TC

Transport Canada

Tower control zone

A controlled airspace within the proximity of an air traffic control tower, usually within a radius of less than 24 kilometres of the tower.

V.F.R. flight

A flight conducted in accordance with Visual flight rules.

Weight group

The classification of weight classes in groups for statistical purposes.