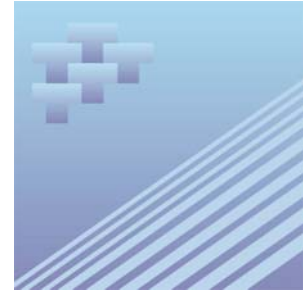




Catalogue no. 51-007-X

# **Aircraft Movement Statistics: NAV CANADA Towers and Flight Service Stations**



September 2007



Statistics  
Canada

Statistique  
Canada

Canada

## How to obtain more information

For information about this product or the wide range of services and data available from Statistics Canada, visit our website at [www.statcan.ca](http://www.statcan.ca) or contact us by e-mail at [infostats@statcan.ca](mailto:infostats@statcan.ca) or by phone from 8:30am to 4:30pm Monday to Friday at:

### **Toll-free telephone (Canada and the United States):**

Inquiries line **1-800-263-1136**

National telecommunications device for the hearing impaired **1-800-363-7629**

Fax line **1-877-287-4369**

Depository Services Program inquiries line **1-800-635-7943**

Depository Services Program fax line **1-800-565-7757**

### **Statistics Canada national contact centre: 1-613-951-8116**

Fax line **1-613-951-0581**

## Information to access the product

This product, catalogue no. 51-007-X, is available for free in electronic format. To obtain a single issue, visit our website at [www.statcan.ca](http://www.statcan.ca) and select Publications.

## Standards of service to the public

Statistics Canada is committed to serving its clients in a prompt, reliable and courteous manner. To this end, the Agency has developed *standards of service* which its employees observe in serving its clients.

To obtain a copy of these service standards, please contact Statistics Canada toll free at 1-800-263-1136. The service standards are also published on [www.statcan.ca](http://www.statcan.ca) under About us > Providing services to Canadians.



Statistics Canada  
Transportation Division

# Aircraft Movement Statistics: NAV CANADA Towers and Flight Service Stations

September 2007

Published by authority of the Minister responsible for Statistics Canada

© Minister of Industry, 2007 and the © Minister of Transport, 2007.

All rights reserved. The content of this electronic publication may be reproduced, in whole or in part, and by any means, without further permission from Statistics Canada, subject to the following conditions: that it be done solely for the purposes of private study, research, criticism, review or newspaper summary, and/or for non-commercial purposes; and that Statistics Canada be fully acknowledged as follows: Source (or "Adapted from", if appropriate): Statistics Canada, year of publication, name of product, catalogue number, volume and issue numbers, reference period and page(s). Otherwise, no part of this publication may be reproduced, stored in a retrieval system or transmitted in any form, by any means—electronic, mechanical or photocopy—or for any purposes without prior written permission of Licensing Services, Client Services Division, Statistics Canada, Ottawa, Ontario, Canada K1A 0T6.

October 2007

Catalogue no. 51-007-X, vol. 1, no. 9

ISSN 1911-6314

Frequency: Monthly

Ottawa

La version française de cette publication est disponible sur demande (n° 51-007-X au catalogue).

---

#### **Note of appreciation**

*Canada owes the success of its statistical system to a long standing partnership between Statistics Canada, the citizens of Canada, its businesses, governments and other institutions. Accurate and timely statistical information could not be produced without their continued cooperation and goodwill.*

# User information

---

## Symbols

The following standard symbols are used in Statistics Canada publications:

- . not available for any reference period
- .. not available for a specific reference period
- ... not applicable
- 0 true zero or a value rounded to zero
- 0<sup>s</sup> value rounded to 0 (zero) where there is a meaningful distinction between true zero and the value that was rounded
- p preliminary
- r revised
- x suppressed to meet the confidentiality requirements of the *Statistics Act*
- E use with caution
- F too unreliable to be published

## Acknowledgements

This publication was prepared by the Aviation Statistics Centre, of the Transportation Division, Statistics Canada under the general direction of **Gord Baldwin**, Director, Transportation Division and **Norah Hillary**, Chief, Aviation Statistics Centre. **Kathie Davidson**, **Maureen de Souza**, **John Scolli** and **Sylvie Savard** contributed to the preparation of this publication.

# Table of contents

---

<b>Highlights</b>	<b>5</b>
<b>Analysis</b>	<b>6</b>
<b>Related products</b>	<b>7</b>
<b>Statistical tables</b>	
1 Total aircraft movements by class of operation	10
1-1 NAV CANADA towers	10
1-2 NAV CANADA flight service stations	11
2 Total aircraft movements, civil and military	12
2-1 NAV CANADA towers	12
2-2 NAV CANADA flight service stations	13
3 Itinerant movements by type of operator	14
3-1 NAV CANADA towers	14
3-2 NAV CANADA flight service stations	15
4 Itinerant movements by I.F.R. (Instrument flight rules) and V.F.R. (Visual flight rules) and runway 88 movements	16
4-1 NAV CANADA towers	16
4-2 NAV CANADA flight service stations	17
5 Itinerant movements by type of power plant	18
5-1 NAV CANADA towers	18
5-2 NAV CANADA flight service stations	19
6 Itinerant movements by aircraft weight group	20
6-1 NAV CANADA towers	20
6-2 NAV CANADA flight service stations	21
7 Itinerant movements, domestic, transborder and international	22
7-1 NAV CANADA towers	22
7-2 NAV CANADA flight service stations	26

## Table of contents – continued

8	Total aircraft movements, peak hour and peak day	31
8-1	NAV CANADA towers	31
8-2	NAV CANADA flight service stations	32
9	Itinerant aircraft movements, peak hour and peak day	33
9-1	NAV CANADA towers	33
9-2	NAV CANADA flight service stations	34
10	Local movements, peak hour and peak day	35
10-1	NAV CANADA towers	35
10-2	NAV CANADA flight service stations	36
11	Local movements - civil, peak hour and peak day	37
11-1	NAV CANADA towers	37
11-2	NAV CANADA flight service stations	38
12	Local movements - military, peak hour and peak day	39
12-1	NAV CANADA towers	39
12-2	NAV CANADA flight service stations	40

## Data quality, concepts and methodology

Methodology	41
Data quality and limitations	43

## Appendix

I	Glossary of terms	44
---	-------------------	----

## Highlights

- For the sixteenth consecutive month, aircraft take-offs and landings at Canadian airports with NAV CANADA air traffic control towers and flight service stations increased in year-over-year monthly comparisons. These 95 airports reported 557,020 movements in September 2007 compared with 509,267 movements at 96 airports in September 2006, an increase of 9.4% (+47,753 movements).
- Itinerant movements (flights from one airport to another) increased by 4.1% (+15,201 movements) in September 2007 compared with the same month a year earlier.
- Local movements (flights that remain in the vicinity of the airport) increased by 23.5% (+32,552 movements) in September 2007 compared with September 2006.

**Table 1**  
**Distribution of aircraft movements at NAV CANADA Towers and Flight Service Stations**

	NAV CANADA towers		NAV CANADA Flight Service Stations		Total	
	number	Change from September 2007/September 2006 percent	number	Change from September 2007/September 2006 percent	number	Change from September 2007/September 2006 percent
<b>Grand total</b>	<b>443,947</b>	<b>10.8</b>	<b>113,073</b>	<b>4.0</b>	<b>557,020</b>	<b>9.4</b>
<b>Itinerant movements</b>						
Air carriers	206,569	2.9	58,800	-5.5	265,369	0.9
Other commercial movements	42,944	17.1	7,463	16.3	50,407	17.0
Private movements	39,057	6.8	16,441	22.0	55,498	10.9
Government civil movements	5,071	-7.7	2,106	-1.8	7,177	-6.1
Government military movements	4,974	8.8	2,493	5.2	7,467	7.6
Itinerant total	298,615	5.1	87,303	0.8	385,918	4.1
<b>Local movements</b>						
Civil local movements	143,952	25.6	24,897	16.6	168,849	24.2
Military local movements	1,380	-22.8	873	10.4	2,253	-12.6
Local total	145,332	24.9	25,770	16.4	171,102	23.5

## Analysis

---

For the sixteenth consecutive month, aircraft take-offs and landings at Canadian airports with NAV CANADA air traffic control towers and flight service stations increased in year-over-year monthly comparisons. These 95 airports reported 557,020 movements in September 2007 compared with 509,267 movements at 96 airports in September 2006, an increase of 9.4% (+47,753 movements).

Itinerant movements (flights from one airport to another) increased by 4.1% (+15,201 movements) in September 2007 compared with the same month a year earlier.

Local movements (flights that remain in the vicinity of the airport) increased by 23.5% (+32,552 movements) in September 2007 compared with September 2006.

### **Airports with NAV CANADA air traffic control towers**

The 42 Canadian airports with NAV CANADA air traffic control towers reported 443,947 aircraft take-offs and landings in September, up 10.8% compared with September 2006 (400,522 movements). Year-over-year increases in aircraft movements were reported by 32 of the airports in September 2007. The variations ranged from an increase of 88.8% at Gander International to a decline of 22.7% at Boundary Bay, British Columbia.

Itinerant movements (flights from one airport to another) increased by 5.1% (+14,496 movements) in September compared with the same month a year earlier. Year-over-year variations in itinerant movements ranged from a 57.6% increase (+1,824 movements) at Toronto/City Centre to a decline of 35.3% (-772 movements) at Edmonton/Villeneuve.

Local movements (flights that remain in the vicinity of the airport) increased by 24.9% (+28,929 movements) in September compared with September 2006. Year-over-year variations in local movements ranged from a 254.9% increase (+2,982 movements) at Gander International to a decline of 56.3% (-170 movements) at St. John's International.

### **Airports with NAV CANADA flight service stations**

The 53 Canadian airports with NAV CANADA flight service stations reported 113,073 aircraft take-offs and landings in September, up 4.0% compared with 54 flight service stations in September 2006 (108,745 movements). Year-over-year increases in aircraft movements were reported by 27 of these airports in September 2007. The variations ranged from a 98.6% increase (+1,993 movements) at Fredericton International to a decline of 40.0% (-503 movements) at High Level, Alberta.

Itinerant movements (flights from one airport to another) increased by 0.8% (+705 movements) in September compared with the same month a year earlier. Year-over-year variations in itinerant movements ranged from a 107.9% increase (+2,006 movements) at St. Catharines to a decline of 39.6% (-491 movements) at High Level, Alberta.

Local movements (flights that remain in the vicinity of the airport) recorded in September 2007 increased by 16.4% compared with the same month a year earlier. Fredericton International recorded the largest gain in local movements, increasing by 1,356 movements (+480.9%) compared with September 2006.



## Related products

---

### Selected CANSIM tables from Statistics Canada

---

401-0005	Aircraft movements by class of operation, airports with NAV CANADA towers, preliminary, monthly
401-0006	Aircraft movements by class of operation, airports with NAV CANADA towers, preliminary, annual
401-0007	Aircraft movements, by class of operation and peak hour and peak day of movements, airports with NAV CANADA towers, monthly
401-0008	Aircraft movements, by civil and military movements, airports with NAV CANADA towers, monthly
401-0009	Itinerant movements, by type of operation, airports with NAV CANADA towers, monthly
401-0010	Itinerant movements, by instrument flight rules, visual flight rules and runway 88, airports with NAV CANADA towers, monthly
401-0011	Itinerant movements, by type of power plant, airports with NAV CANADA towers, monthly
401-0012	Itinerant movements, by aircraft gross take-off weight, airports with NAV CANADA towers, monthly
401-0013	Domestic and international itinerant movements, by type of operation, airports with NAV CANADA towers, monthly
401-0014	Aircraft movements, by class of operation and peak hour and peak day of movements, airports with NAV CANADA flight service stations, monthly
401-0015	Aircraft movements, by civil and military movements, airports with NAV CANADA flight service stations, monthly
401-0016	Itinerant movements, by type of operation, airports with NAV CANADA flight service stations, monthly
401-0017	Itinerant movements, by instrument flight rules, visual flight rules and runway 88, airports with NAV CANADA flight service stations, monthly
401-0018	Itinerant movements, by type of power plant, airports with NAV CANADA flight service stations, monthly
401-0019	Itinerant movements, by aircraft gross take-off weight, airports with NAV CANADA flight service stations, monthly
401-0020	Domestic and international itinerant movements, by type of operation, airports with NAV CANADA flight service stations, monthly

---

## **Selected surveys from Statistics Canada**

---

2715	Aircraft Movement Statistics
------	------------------------------

---

## **Selected summary tables from Statistics Canada**

---

- *Aircraft movements by class of operation (monthly)*

# Statistical tables

---

---

**Table 1-1**  
**Total aircraft movements by class of operation — NAV CANADA towers**

	Total		Itinerant		Local	
	Rank of movements	Number of movements	Rank of movements	Number of movements	Rank of movements	Number of movements
Abbotsford	11	14,629	18	5,792	4	8,837
Boundary Bay	6	16,323	13	6,849	2	9,474
Calgary International	3	21,202	3	20,912	37	290
Calgary/Springbank	10	15,036	14	6,299	5	8,737
Chicoutimi/St-Honoré	12	13,383	33	3,105	1	10,278
Edmonton City Centre	25	7,650	17	6,064	26	1,586
Edmonton International	17	10,496	7	10,024	35	472
Edmonton/Villeneuve	29	6,604	42	1,416	13	5,188
Gander International	26	7,386	31	3,234	15	4,152
Halifax/Robert L Stanfield International	24	7,879	11	7,082	31	797
Hamilton	30	6,561	26	4,113	23	2,448
Kelowna	27	7,054	25	4,323	21	2,731
Kitchener/Waterloo	16	11,133	22	5,079	10	6,054
Langley	23	8,926	30	3,418	12	5,508
London	19	9,548	19	5,772	18	3,776
Moncton/Greater Moncton International	14	12,045	15	6,295	11	5,750
Montréal/Mirabel International	41	2,264	40	1,664	33	600
Montréal/Pierre Elliott Trudeau International	4	19,701	4	19,701	0	0
Montréal/St-Hubert	8	15,258	12	7,022	6	8,236
Oshawa	33	5,528	35	2,808	22	2,720
Ottawa/Macdonald-Cartier International	9	15,111	6	10,600	14	4,511
Pitt Meadows	18	10,331	28	3,625	8	6,706
Prince George	38	3,503	38	2,443	29	1,060
Québec/Jean Lesage International	15	11,366	10	8,442	20	2,924
Regina International	35	5,192	27	3,693	27	1,499
Saskatoon/John G Diefenbaker International	21	9,324	20	5,467	17	3,857
Sault Ste. Marie	32	5,901	36	2,601	19	3,300
St. John's International	39	3,351	32	3,219	38	132
St-Jean	36	4,001	34	2,941	28	1,060
Sudbury	40	2,901	37	2,542	36	359
Thunder Bay	28	6,747	21	5,156	25	1,591
Toronto/Buttonville Municipal	5	18,258	8	9,128	3	9,130
Toronto/City Centre	22	9,042	23	4,990	16	4,052
Toronto/Lester B Pearson International	1	36,474	1	36,474	0	0
Vancouver Harbour	31	6,231	16	6,229	40	2
Vancouver International	2	28,630	2	28,624	39	6
Victoria International	7	16,240	9	8,708	7	7,532
Whitehorse International	42	2,153	41	1,612	34	541
Windsor	37	3,752	39	2,104	24	1,648
Winnipeg/James Armstrong Richardson International	13	12,052	5	11,080	30	972
Winnipeg/St. Andrews	20	9,488	29	3,422	9	6,066
Yellowknife	34	5,293	24	4,543	32	750
<b>Total of NAV CANADA towers (42)</b>	.	<b>443,947</b>	.	<b>298,615</b>	.	<b>145,332</b>

**Table 1-2**  
**Total aircraft movements by class of operation — NAV CANADA flight service stations**

	Total		Itinerant		Local	
	Rank of movements	Number of movements	Rank of movements	Number of movements	Rank of movements	Number of movements
Brandon Municipal	21	2,227	24	1,543	17	684
Campbell River	13	3,076	13	2,106	13	970
Castlegar	20	2,347	37	1,121	10	1,226
Charlottetown	8	3,198	17	1,946	9	1,252
Churchill	48	739	48	737	47	2
Cranbrook	43	992	42	898	35	94
Deer Lake	30	1,559	26	1,531	42	28
Fort McMurray	1	7,687	1	6,215	4	1,472
Fort Nelson	31	1,558	28	1,512	39	46
Fort St John	15	2,884	10	2,266	18	618
Fredericton International	5	4,014	6	2,376	2	1,638
Grande Prairie	10	3,157	5	2,401	15	756
High Level	47	753	47	749	45	4
Îles-de-la-Madeleine	52	366	52	366	0	0
Inuvik/Mike Zubko	23	2,211	19	1,865	22	346
Iqaluit	26	1,966	20	1,840	31	126
Kamloops	14	3,051	16	2,051	11	1,000
Kenora	44	893	43	857	40	36
Kingston	7	3,313	9	2,319	12	994
Kuujuuaq	39	1,210	35	1,146	37	64
Kuujuuarapik	51	547	50	547	0	0
La Grande Rivière	46	773	46	773	0	0
La Ronge	36	1,346	33	1,262	36	84
Lethbridge	19	2,501	21	1,765	16	736
Lloydminster	33	1,438	41	914	19	524
Medicine Hat	32	1,525	34	1,161	21	364
Mont-Joli	42	1,058	45	778	24	280
Nanaimo	9	3,191	11	2,261	14	930
Norman Wells	28	1,689	27	1,521	25	168
North Bay	3	4,453	12	2,139	1	2,314
Ottawa/Gatineau	12	3,114	22	1,718	6	1,396
Peace River	45	859	44	807	38	52
Penticton	11	3,144	18	1,874	8	1,270
Port Hardy	38	1,285	32	1,283	46	2
Prince Albert	27	1,961	25	1,537	20	424
Prince Rupert	50	548	51	526	43	22
Rankin Inlet	34	1,387	30	1,387	0	0
Red Deer Regional	6	3,684	8	2,328	7	1,356
Rouyn-Noranda	41	1,081	40	957	32	124
Saint John	25	1,985	23	1,689	23	296
Sept-Îles	22	2,222	14	2,072	28	150
Sioux Lookout	18	2,520	7	2,358	26	162
Smithers	35	1,386	31	1,354	41	32
St Anthony	53	277	53	269	44	8
St Catharines	2	5,481	3	3,865	3	1,616
Terrace	29	1,583	29	1,461	33	122
Thompson	16	2,764	4	2,670	34	94
Timmins	24	2,194	15	2,064	30	130
Val-D'or	37	1,290	36	1,134	27	156
Victoria Harbour	4	4,189	2	4,189	0	0
Wabush	49	706	49	706	0	0
Whitecourt	17	2,562	38	1,094	5	1,468
Williams Lake	40	1,129	39	995	29	134
<b>Total of all flight service stations (53)</b>	.	<b>113,073</b>	.	<b>87,303</b>	.	<b>25,770</b>

**Table 2-1**  
**Total aircraft movements, civil and military — NAV CANADA towers**

	Civil movements			Military movements				
	Total	Itinerant		Local	Total	Itinerant		Local
		Commercial	Private and government					
	number							
Abbotsford	14,587	4,346	1,404	8,837	42	42	0	
Boundary Bay	16,321	5,299	1,548	9,474	2	2	0	
Calgary International	20,953	19,298	1,372	283	249	242	7	
Calgary/Springbank	15,024	3,886	2,401	8,737	12	12	0	
Chicoutimi/St-Honoré	13,364	2,849	237	10,278	19	19	0	
Edmonton City Centre	7,533	3,932	2,045	1,556	117	87	30	
Edmonton International	10,321	9,513	386	422	175	125	50	
Edmonton/Villeneuve	6,579	931	460	5,188	25	25	0	
Gander International	6,843	2,292	625	3,926	543	317	226	
Halifax/Robert L. Stanfield International	7,488	6,390	510	588	391	182	209	
Hamilton	6,517	3,241	840	2,436	44	32	12	
Kelowna	7,016	3,414	877	2,725	38	32	6	
Kitchener/Waterloo	11,061	3,637	1,382	6,042	72	60	12	
Langley	8,922	1,965	1,451	5,506	4	2	2	
London	9,511	4,245	1,490	3,776	37	37	0	
Moncton/Greater Moncton International	11,990	5,726	520	5,744	55	49	6	
Montréal/Mirabel International	2,199	1,044	567	588	65	53	12	
Montréal/Pierre Elliott Trudeau International	19,659	17,752	1,907	0	42	42	0	
Montréal/St-Hubert	15,104	5,089	1,781	8,234	154	152	2	
Oshawa	5,522	1,847	955	2,720	6	6	0	
Ottawa/Macdonald-Cartier International	14,835	9,195	1,192	4,448	276	213	63	
Pitt Meadows	10,263	1,852	1,705	6,706	68	68	0	
Prince George	3,449	1,875	514	1,060	54	54	0	
Québec/Jean Lesage International	11,180	6,559	1,697	2,924	186	186	0	
Regina International	4,830	2,602	800	1,428	362	291	71	
Saskatoon/John G. Diefenbaker International	9,025	4,136	1,072	3,817	299	259	40	
Sault Ste. Marie	5,844	2,149	409	3,286	57	43	14	
St. John's International	3,075	2,578	385	112	276	256	20	
St-Jean	2,904	533	1,311	1,060	1,097	1,097	0	
Sudbury	2,852	2,061	434	357	49	47	2	
Thunder Bay	6,609	4,651	417	1,541	138	88	50	
Toronto/Buttonville Municipal	18,232	6,424	2,696	9,112	26	8	18	
Toronto/City Centre	8,996	3,874	1,070	4,052	46	46	0	
Toronto/Lester B. Pearson International	36,410	34,873	1,537	0	64	64	0	
Vancouver Harbour	6,231	5,981	248	2	0	0	0	
Vancouver International	28,607	27,087	1,514	6	23	23	0	
Victoria International	15,935	6,651	1,958	7,326	305	99	206	
Whitehorse International	2,135	1,152	448	535	18	12	6	
Windsor	3,746	1,647	451	1,648	6	6	0	
Winnipeg/James Armstrong Richardson International	11,385	9,782	815	788	667	483	184	
Winnipeg/St. Andrews	9,474	3,026	382	6,066	14	14	0	
Yellowknife	5,062	4,129	315	618	231	99	132	
<b>Total of NAV CANADA towers (42)</b>	<b>437,593</b>	<b>249,513</b>	<b>44,128</b>	<b>143,952</b>	<b>6,354</b>	<b>4,974</b>	<b>1,380</b>	

**Table 2-2**  
**Total aircraft movements, civil and military — NAV CANADA flight service stations**

	Civil movements			Military movements				
	Total	Itinerant		Local	Total	Itinerant		Local
		Commercial	Private and government					
	number							
Brandon Municipal	1,703	432	647	624	524	464	60	
Campbell River	3,046	1,454	622	970	30	30	0	
Castlegar	2,339	1,004	109	1,226	8	8	0	
Charlottetown	3,137	1,534	381	1,222	61	31	30	
Churchill	735	687	46	2	4	4	0	
Cranbrook	955	658	215	82	37	25	12	
Deer Lake	1,556	1,442	86	28	3	3	0	
Fort McMurray	7,677	5,252	953	1,472	10	10	0	
Fort Nelson	1,550	1,367	137	46	8	8	0	
Fort St John	2,882	1,957	307	618	2	2	0	
Fredericton International	3,834	1,357	852	1,625	180	167	13	
Grande Prairie	3,155	1,824	575	756	2	2	0	
High Level	753	670	79	4	0	0	0	
Îles-de-la-Madeleine	364	311	53	0	2	2	0	
Inuvik/Mike Zubko	1,784	1,609	69	106	427	187	240	
Iqaluit	1,929	1,588	215	126	37	37	0	
Kamloops	3,021	1,524	509	988	30	18	12	
Kenora	856	659	175	22	37	23	14	
Kingston	3,227	1,426	827	974	86	66	20	
Kuujuaq	1,210	1,062	84	64	0	0	0	
Kuujuarapik	547	542	5	0	0	0	0	
La Grande Rivière	773	729	44	0	0	0	0	
La Ronge	1,333	1,131	118	84	13	13	0	
Lethbridge	2,471	1,177	558	736	30	30	0	
Lloydminster	1,424	449	451	524	14	14	0	
Medicine Hat	1,501	844	297	360	24	20	4	
Mont-Joli	800	448	72	280	258	258	0	
Nanaimo	2,669	1,263	926	480	522	72	450	
Norman Wells	1,687	1,313	206	168	2	2	0	
North Bay	4,369	1,329	726	2,314	84	84	0	
Ottawa/Gatineau	3,048	745	907	1,396	66	66	0	
Peace River	859	656	151	52	0	0	0	
Penticton	3,061	1,365	444	1,252	83	65	18	
Port Hardy	1,262	1,078	182	2	23	23	0	
Prince Albert	1,948	1,206	318	424	13	13	0	
Prince Rupert	548	407	119	22	0	0	0	
Rankin Inlet	1,379	1,365	14	0	8	8	0	
Red Deer Regional	3,639	1,523	760	1,356	45	45	0	
Rouyn-Noranda	1,079	751	204	124	2	2	0	
Saint John	1,943	1,200	447	296	42	42	0	
Sept-Îles	2,218	1,923	145	150	4	4	0	
Sioux Lookout	2,518	2,262	94	162	2	2	0	
Smithers	1,272	1,026	214	32	114	114	0	
St Anthony	277	252	17	8	0	0	0	
St Catharines	4,997	1,074	2,307	1,616	484	484	0	
Terrace	1,577	1,358	97	122	6	6	0	
Thompson	2,763	2,467	202	94	1	1	0	
Timmins	2,176	1,801	245	130	18	18	0	
Val-D'or	1,286	871	259	156	4	4	0	
Victoria Harbour	4,187	3,672	515	0	2	2	0	
Wabush	702	627	75	0	4	4	0	
Whitecourt	2,556	936	152	1,468	6	6	0	
Williams Lake	1,125	656	335	134	4	4	0	
<b>Total of all flight service stations (53)</b>	<b>109,707</b>	<b>66,263</b>	<b>18,547</b>	<b>24,897</b>	<b>3,366</b>	<b>2,493</b>	<b>873</b>	

**Table 3-1**  
**Itinerant movements by type of operator — NAV CANADA towers**

	Total	Air carrier movements		Other commercial movements	Private movements	Government movements	
		Levels I to III and foreign	Levels IV to VI			Civil	Military
	number						
Abbotsford	5,792	530	2,345	1,471	1,216	188	42
Boundary Bay	6,849	14	1,061	4,224	1,510	38	2
Calgary International	20,912	16,987	1,347	964	1,204	168	242
Calgary/Springbank	6,299	63	770	3,053	2,372	29	12
Chicoutimi/St-Honoré	3,105	28	807	2,014	235	2	19
Edmonton City Centre	6,064	1,636	689	1,607	1,655	390	87
Edmonton International	10,024	9,002	441	70	323	63	125
Edmonton/Villeneuve	1,416	2	176	753	455	5	25
Gander International	3,234	563	1,650	79	508	117	317
Halifax/Robert L Stanfield International	7,082	5,592	725	73	417	93	182
Hamilton	4,113	2,033	955	253	647	193	32
Kelowna	4,323	2,281	181	952	776	101	32
Kitchener/Waterloo	5,079	328	2,398	911	1,365	17	60
Langley	3,418	129	155	1,681	1,449	2	2
London	5,772	1,296	1,142	1,807	1,394	96	37
Moncton/Greater Moncton International	6,295	1,770	3,409	547	330	190	49
Montréal/Mirabel International	1,664	723	279	42	543	24	53
Montréal/Pierre Elliott Trudeau International	19,701	16,578	824	350	1,702	205	42
Montréal/St-Hubert	7,022	2,313	686	2,090	1,708	73	152
Oshawa	2,808	153	113	1,581	953	2	6
Ottawa/Macdonald-Cartier International	10,600	6,498	450	2,247	579	613	213
Pitt Meadows	3,625	24	629	1,199	1,693	12	68
Prince George	2,443	1,318	324	233	450	64	54
Québec/Jean Lesage International	8,442	4,056	552	1,951	1,353	344	186
Regina International	3,693	1,884	600	118	586	214	291
Saskatoon/John G Diefenbaker International	5,467	2,783	867	486	728	344	259
Sault Ste. Marie	2,601	798	151	1,200	328	81	43
St. John's International	3,219	1,428	1,086	64	229	156	256
St-Jean	2,941	100	181	252	1,273	38	1,097
Sudbury	2,542	1,402	598	61	296	138	47
Thunder Bay	5,156	3,147	658	846	266	151	88
Toronto/Buttontville Municipal	9,128	514	925	4,985	2,609	87	8
Toronto/City Centre	4,990	1,055	1,086	1,733	1,044	26	46
Toronto/Lester B Pearson International	36,474	34,279	385	209	1,510	27	64
Vancouver Harbour	6,229	5,330	348	303	243	5	0
Vancouver International	28,624	24,944	1,877	266	1,191	323	23
Victoria International	8,708	3,109	2,716	826	1,903	55	99
Whitehorse International	1,612	638	496	18	412	36	12
Windsor	2,104	575	1,003	69	445	6	6
Winnipeg/James Armstrong Richardson International	11,080	9,070	609	103	528	287	483
Winnipeg/St. Andrews	3,422	418	1,491	1,117	378	4	14
Yellowknife	4,543	3,432	561	136	251	64	99
<b>Total of NAV CANADA towers (42)</b>	<b>298,615</b>	<b>168,823</b>	<b>37,746</b>	<b>42,944</b>	<b>39,057</b>	<b>5,071</b>	<b>4,974</b>



**Table 3-2**  
**Itinerant movements by type of operator — NAV CANADA flight service stations**

	Total	Air carrier movements		Other commercial movements	Private movements	Government movements	
		Levels I to III and foreign	Levels IV to VI			Civil	Military
	number						
Brandon Municipal	1,543	132	242	58	625	22	464
Campbell River	2,106	757	281	416	574	48	30
Castlegar	1,121	299	387	318	92	17	8
Charlottetown	1,946	854	179	501	358	23	31
Churchill	737	609	72	6	27	19	4
Cranbrook	898	513	58	87	209	6	25
Deer Lake	1,531	795	563	84	38	48	3
Fort McMurray	6,215	3,121	1,517	614	896	57	10
Fort Nelson	1,512	323	601	443	129	8	8
Fort St John	2,266	726	899	332	293	14	2
Fredericton International	2,376	793	517	47	690	162	167
Grande Prairie	2,401	1,174	566	84	561	14	2
High Level	749	195	306	169	69	10	0
Îles-de-la-Madeleine	366	270	21	20	21	32	2
Inuvik/Mike Zubko	1,865	415	1,194	0	33	36	187
Iqaluit	1,840	1,330	214	44	91	124	37
Kamloops	2,051	761	337	426	431	78	18
Kenora	857	349	282	28	154	21	23
Kingston	2,319	553	371	502	791	36	66
Kuujuuaq	1,146	949	110	3	60	24	0
Kuujuuarapik	547	514	28	0	5	0	0
La Grande Rivière	773	523	201	5	26	18	0
La Ronge	1,262	1,078	26	27	44	74	13
Lethbridge	1,765	519	44	614	542	16	30
Lloydminster	914	130	273	46	434	17	14
Medicine Hat	1,161	693	74	77	293	4	20
Mont-Joli	778	424	2	22	66	6	258
Nanaimo	2,261	497	597	169	874	52	72
Norman Wells	1,521	795	465	53	194	12	2
North Bay	2,139	512	426	391	677	49	84
Ottawa/Gatineau	1,718	141	296	308	774	133	66
Peace River	807	359	282	15	133	18	0
Penticton	1,874	497	750	118	418	26	65
Port Hardy	1,283	955	115	8	96	86	23
Prince Albert	1,537	1,063	38	105	170	148	13
Prince Rupert	526	241	142	24	65	54	0
Rankin Inlet	1,387	1,098	263	4	4	10	8
Red Deer Regional	2,328	462	894	167	716	44	45
Rouyn-Noranda	957	561	122	68	172	32	2
Saint John	1,689	805	202	193	431	16	42
Sept-Îles	2,072	1,371	527	25	93	52	4
Sioux Lookout	2,358	1,992	222	48	78	16	2
Smithers	1,354	619	324	83	202	12	114
St Anthony	269	46	146	60	7	10	0
St Catharines	3,865	45	951	78	2,303	4	484
Terrace	1,461	685	608	65	79	18	6
Thompson	2,670	2,072	370	25	69	133	1
Timmins	2,064	1,589	206	6	158	87	18
Val-D'or	1,134	745	59	67	241	18	4
Victoria Harbour	4,189	3,519	140	13	430	85	2
Wabush	706	348	266	13	44	31	4
Whitecourt	1,094	33	625	278	146	6	6
Williams Lake	995	400	150	106	315	20	4
<b>Total of all flight service stations (53)</b>	<b>87,303</b>	<b>40,249</b>	<b>18,551</b>	<b>7,463</b>	<b>16,441</b>	<b>2,106</b>	<b>2,493</b>

Table 4-1

**Itinerant movements by I.F.R. (Instrument flight rules) and V.F.R. (Visual flight rules) and runway 88 movements  
— NAV CANADA towers**

	Itinerant movements				Runway 88 flights number	
	Total of IFR and VFR flights <sup>1</sup> number	IFR percent	IFR flights, as percentage of total flights percent	VFR number		VFR flights, as percentage of total flights percent
Abbotsford	5,792	1,656	28.5	4,136	71.4	1,475
Boundary Bay	6,849	453	6.6	6,396	93.3	506
Calgary International	20,912	18,912	90.4	2,000	9.5	733
Calgary/Springbank	6,299	285	4.5	6,014	95.4	3,898
Chicoutimi/St-Honoré	3,105	154	4.9	2,951	95.0	177
Edmonton City Centre	6,064	2,730	45.0	3,334	54.9	5,192
Edmonton International	10,024	9,340	93.1	684	6.8	1,521
Edmonton/Villeneuve	1,416	10	0.7	1,406	99.2	166
Gander International	3,234	1,461	45.1	1,773	54.8	186
Halifax/Robert L Stanfield International	7,082	6,310	89.0	772	10.9	686
Hamilton	4,113	2,534	61.6	1,579	38.3	1,206
Kelowna	4,323	2,670	61.7	1,653	38.2	1,153
Kitchener/Waterloo	5,079	824	16.2	4,255	83.7	821
Langley	3,418	38	1.1	3,380	98.8	2,740
London	5,772	1,682	29.1	4,090	70.8	866
Moncton/Greater Moncton International	6,295	2,336	37.1	3,959	62.8	751
Montréal/Mirabel International	1,664	916	55.0	748	44.9	1,860
Montréal/Pierre Elliott Trudeau International	19,701	18,741	95.1	960	4.8	4,032
Montréal/St-Hubert	7,022	1,505	21.4	5,517	78.5	2,131
Oshawa	2,808	142	5.0	2,666	94.9	791
Ottawa/Macdonald-Cartier International	10,600	7,347	69.3	3,253	30.6	1,174
Pitt Meadows	3,625	34	0.9	3,591	99.0	2,820
Prince George	2,443	1,456	59.5	987	40.4	498
Québec/Jean Lesage International	8,442	4,865	57.6	3,577	42.3	787
Regina International	3,693	2,383	64.5	1,310	35.4	133
Saskatoon/John G Diefenbaker International	5,467	3,296	60.2	2,171	39.7	405
Sault Ste. Marie	2,601	1,072	41.2	1,529	58.7	193
St. John's International	3,219	2,896	89.9	323	10.0	357
St-Jean	2,941	222	7.5	2,719	92.4	238
Sudbury	2,542	1,758	69.1	784	30.8	465
Thunder Bay	5,156	3,606	69.9	1,550	30.0	338
Toronto/Buttonville Municipal	9,128	984	10.7	8,144	89.2	711
Toronto/City Centre	4,990	1,429	28.6	3,561	71.3	4,932
Toronto/Lester B Pearson International	36,474	36,225	99.3	249	0.6	185
Vancouver Harbour	6,229	104	1.6	6,125	98.3	3,173
Vancouver International	28,624	21,564	75.3	7,060	24.6	11,596
Victoria International	8,708	3,475	39.9	5,233	60.0	10,047
Whitehorse International	1,612	501	31.0	1,111	68.9	1,870
Windsor	2,104	770	36.5	1,334	63.4	119
Winnipeg/James Armstrong Richardson International	11,080	9,708	87.6	1,372	12.3	923
Winnipeg/St. Andrews	3,422	80	2.3	3,342	97.6	301
Yellowknife	4,543	2,517	55.4	2,026	44.5	4,661
<b>Total of NAV CANADA towers (42)</b>	<b>298,615</b>	<b>178,991</b>	<b>59.9</b>	<b>119,624</b>	<b>40.1</b>	<b>76,817</b>

1. Total excludes runway 88 flights.

Table 4-2

## Itinerant movements by I.F.R. (Instrument flight rules) and V.F.R. (Visual flight rules) and runway 88 movements — NAV CANADA flight service stations

	Itinerant movements				Runway 88 flights number	
	Total of IFR and VFR flights <sup>1</sup>	IFR	IFR flights, as percentage of total flights	VFR		VFR flights, as percentage of total flights
	number		percent	number		percent
Brandon Municipal	1,543	178	11.5	1,365	88.4	91
Campbell River	2,106	595	28.2	1,511	71.7	513
Castlegar	1,121	316	28.1	805	71.8	112
Charlottetown	1,946	995	51.1	951	48.8	25
Churchill	737	627	85.0	110	14.9	169
Cranbrook	898	587	65.3	311	34.6	412
Deer Lake	1,531	1,353	88.3	178	11.6	52
Fort McMurray	6,215	2,053	33.0	4,162	66.9	199
Fort Nelson	1,512	365	24.1	1,147	75.8	237
Fort St John	2,266	715	31.5	1,551	68.4	145
Fredericton International	2,376	1,000	42.0	1,376	57.9	116
Grande Prairie	2,401	1,416	58.9	985	41.0	220
High Level	749	278	37.1	471	62.8	401
Îles-de-la-Madeleine	366	329	89.8	37	10.1	3
Inuvik/Mike Zubko	1,865	457	24.5	1,408	75.4	68
Iqaluit	1,840	1,189	64.6	651	35.3	116
Kamloops	2,051	948	46.2	1,103	53.7	242
Kenora	857	474	55.3	383	44.6	117
Kingston	2,319	717	30.9	1,602	69.0	184
Kuujuaq	1,146	386	33.6	760	66.3	408
Kuujuarapik	547	267	48.8	280	51.1	5
La Grande Rivière	773	549	71.0	224	28.9	350
La Ronge	1,262	773	61.2	489	38.7	856
Lethbridge	1,765	660	37.3	1,105	62.6	60
Lloydminster	914	274	29.9	640	70.0	29
Medicine Hat	1,161	378	32.5	783	67.4	233
Mont-Joli	778	339	43.5	439	56.4	20
Nanaimo	2,261	629	27.8	1,632	72.1	1,219
Norman Wells	1,521	164	10.7	1,357	89.2	210
North Bay	2,139	792	37.0	1,347	62.9	528
Ottawa/Gatineau	1,718	214	12.4	1,504	87.5	190
Peace River	807	338	41.8	469	58.1	104
Penticton	1,874	471	25.1	1,403	74.8	198
Port Hardy	1,283	361	28.1	922	71.8	300
Prince Albert	1,537	1,229	79.9	308	20.0	115
Prince Rupert	526	291	55.3	235	44.6	91
Rankin Inlet	1,387	735	52.9	652	47.0	377
Red Deer Regional	2,328	430	18.4	1,898	81.5	422
Rouyn-Noranda	957	717	74.9	240	25.0	94
Saint John	1,689	1,105	65.4	584	34.5	39
Sept-Îles	2,072	1,366	65.9	706	34.0	330
Sioux Lookout	2,358	1,637	69.4	721	30.5	837
Smithers	1,354	570	42.0	784	57.9	601
St Anthony	269	189	70.2	80	29.7	0
St Catharines	3,865	199	5.1	3,666	94.8	433
Terrace	1,461	713	48.8	748	51.1	207
Thompson	2,670	1,520	56.9	1,150	43.0	449
Timmins	2,064	1,613	78.1	451	21.8	283
Val-D'or	1,134	687	60.5	447	39.4	468
Victoria Harbour	4,189	85	2.0	4,104	97.9	520
Wabush	706	614	86.9	92	13.0	207
Whitecourt	1,094	75	6.8	1,019	93.1	87
Williams Lake	995	418	42.0	577	57.9	301
<b>Total of all flight service stations (53)</b>	<b>87,303</b>	<b>35,380</b>	<b>40.5</b>	<b>51,923</b>	<b>59.5</b>	<b>13,993</b>

1. Total excludes runway 88 flights.

**Table 5-1**  
**Itinerant movements by type of power plant — NAV CANADA towers**

	Total	Jet engines	Turbo-propellers	Piston engines	Helicopters	Gliders
	number					
Abbotsford	5,792	456	323	3,794	1,217	2
Boundary Bay	6,849	1	25	6,543	273	7
Calgary International	20,912	13,661	5,168	1,366	717	0
Calgary/Springbank	6,299	23	200	5,446	628	2
Chicoutimi/St-Honoré	3,105	2	39	2,356	708	0
Edmonton City Centre	6,064	458	2,074	2,705	827	0
Edmonton International	10,024	6,237	3,204	529	54	0
Edmonton/Villeneuve	1,416	8	16	1,217	125	50
Gander International	3,234	866	529	1,558	281	0
Halifax/Robert L Stanfield International	7,082	4,212	1,872	529	469	0
Hamilton	4,113	1,629	795	1,548	139	2
Kelowna	4,323	1,411	1,196	1,538	178	0
Kitchener/Waterloo	5,079	198	393	4,145	343	0
Langley	3,418	0	119	2,783	510	6
London	5,772	380	1,428	3,701	263	0
Moncton/Greater Moncton International	6,295	1,188	718	4,289	100	0
Montréal/Mirabel International	1,664	656	309	465	234	0
Montréal/Pierre Elliott Trudeau International	19,701	12,857	5,647	788	409	0
Montréal/St-Hubert	7,022	148	924	5,319	631	0
Oshawa	2,808	7	120	2,579	101	1
Ottawa/Macdonald-Cartier International	10,600	5,305	2,048	2,799	448	0
Pitt Meadows	3,625	4	109	3,324	166	22
Prince George	2,443	637	940	450	388	28
Québec/Jean Lesage International	8,442	1,389	3,182	3,119	750	2
Regina International	3,693	1,469	660	1,541	19	4
Saskatoon/John G Diefenbaker International	5,467	1,525	1,666	2,244	32	0
Sault Ste. Marie	2,601	50	976	1,539	36	0
St. John's International	3,219	1,426	1,376	138	239	40
St-Jean	2,941	0	58	1,921	41	921
Sudbury	2,542	45	1,709	505	283	0
Thunder Bay	5,156	880	2,844	1,098	334	0
Toronto/Buttonville Municipal	9,128	139	644	7,594	749	2
Toronto/City Centre	4,990	2	1,332	3,046	594	16
Toronto/Lester B Pearson International	36,474	30,268	6,076	101	29	0
Vancouver Harbour	6,229	0	3,038	2,282	909	0
Vancouver International	28,624	13,423	9,898	4,091	1,212	0
Victoria International	8,708	1,279	2,204	4,776	449	0
Whitehorse International	1,612	272	377	735	228	0
Windsor	2,104	101	592	1,392	19	0
Winnipeg/James Armstrong Richardson International	11,080	5,282	4,499	1,149	150	0
Winnipeg/St. Andrews	3,422	0	303	3,014	105	0
Yellowknife	4,543	824	2,772	503	444	0
<b>Total of NAV CANADA towers (42)</b>	<b>298,615</b>	<b>108,718</b>	<b>72,402</b>	<b>100,559</b>	<b>15,831</b>	<b>1,105</b>

**Table 5-2**  
**Itinerant movements by type of power plant — NAV CANADA flight service stations**

	Total	Jet engines	Turbo-propellers	Piston engines	Helicopters	Gliders
	number					
Brandon Municipal	1,543	26	239	910	36	332
Campbell River	2,106	38	861	860	347	0
Castlegar	1,121	12	390	388	331	0
Charlottetown	1,946	453	406	1,040	47	0
Churchill	737	12	631	27	67	0
Cranbrook	898	32	505	340	19	2
Deer Lake	1,531	224	1,153	96	58	0
Fort McMurray	6,215	853	1,813	1,647	1,902	0
Fort Nelson	1,512	31	372	387	722	0
Fort St John	2,266	261	537	501	966	1
Fredericton International	2,376	319	645	1,224	188	0
Grande Prairie	2,401	259	1,078	604	460	0
High Level	749	12	305	134	298	0
Îles-de-la-Madeleine	366	10	287	67	2	0
Inuvik/Mike Zubko	1,865	262	936	190	477	0
Iqaluit	1,840	420	1,156	18	246	0
Kamloops	2,051	41	829	847	334	0
Kenora	857	40	414	221	182	0
Kingston	2,319	47	638	1,478	155	1
Kuujuuaq	1,146	140	877	23	106	0
Kuujuuarapik	547	0	536	5	6	0
La Grande Rivière	773	12	720	20	21	0
La Ronge	1,262	0	998	225	39	0
Lethbridge	1,765	77	598	1,040	50	0
Lloydminster	914	26	227	623	38	0
Medicine Hat	1,161	40	428	625	68	0
Mont-Joli	778	8	360	389	21	0
Nanaimo	2,261	32	532	1,611	84	2
Norman Wells	1,521	142	509	409	461	0
North Bay	2,139	77	728	836	446	52
Ottawa/Gatineau	1,718	21	226	1,325	143	3
Peace River	807	34	347	113	313	0
Penticton	1,874	20	600	745	508	1
Port Hardy	1,283	23	822	243	195	0
Prince Albert	1,537	16	1,181	286	54	0
Prince Rupert	526	39	282	41	164	0
Rankin Inlet	1,387	151	965	4	267	0
Red Deer Regional	2,328	67	525	1,591	145	0
Rouyn-Noranda	957	90	676	183	8	0
Saint John	1,689	431	550	650	58	0
Sept-Îles	2,072	33	1,267	443	329	0
Sioux Lookout	2,358	2	2,023	297	36	0
Smithers	1,354	40	687	246	323	58
St Anthony	269	7	251	5	6	0
St Catharines	3,865	58	56	2,391	521	839
Terrace	1,461	30	722	83	626	0
Thompson	2,670	22	2,025	365	258	0
Timmins	2,064	4	1,697	257	106	0
Val-D'or	1,134	93	651	298	92	0
Victoria Harbour	4,189	0	2,742	757	690	0
Wabush	706	15	574	51	66	0
Whitecourt	1,094	10	88	225	770	1
Williams Lake	995	14	428	401	152	0
<b>Total of all flight service stations (53)</b>	<b>87,303</b>	<b>5,126</b>	<b>39,093</b>	<b>27,785</b>	<b>14,007</b>	<b>1,292</b>

**Table 6-1**  
**Itinerant movements by aircraft weight group — NAV CANADA towers**

	Gross take-off weight in kilograms									
	2 000	2 001	4 001	5 671	9 001	18 001	35 001	70 001	90 001	136 001
	and under	to 4 000	to 5 670	to 9 000	to 18 000	to 35 000	to 70 000	to 90 000	to 136 000	and over
	number									
Abbotsford	4,344	584	232	83	32	67	445	5	0	0
Boundary Bay	6,310	514	20	4	0	1	0	0	0	0
Calgary International	1,422	676	1,792	2,372	902	4,050	7,094	1,479	409	716
Calgary/Springbank	5,626	414	202	44	0	13	0	0	0	0
Chicoutimi/St-Honoré	2,496	353	254	2	0	0	0	0	0	0
Edmonton City Centre	2,866	682	1,610	674	186	36	2	8	0	0
Edmonton International	417	190	650	915	417	2,250	4,252	670	155	108
Edmonton/Villeneuve	1,352	32	26	5	0	1	0	0	0	0
Gander International	1,541	79	128	231	537	380	47	91	57	143
Halifax/Robert L. Stanfield International	265	327	512	871	1,071	1,207	1,912	495	216	206
Hamilton	1,364	427	316	320	256	209	497	11	672	41
Kelowna	1,512	164	253	690	290	558	838	1	9	8
Kitchener/Waterloo	4,251	267	202	58	213	24	60	4	0	0
Langley	3,206	185	19	0	6	0	2	0	0	0
London	3,934	228	349	69	819	183	180	8	2	0
Moncton/Greater Moncton International	4,159	252	304	258	179	733	162	3	238	7
Montréal/Mirabel International	572	177	47	146	45	158	124	2	256	137
Montréal/Pierre Elliott Trudeau International	793	356	934	1,121	3,204	5,543	4,249	1,188	108	2,205
Montréal/St-Hubert	5,069	747	884	71	182	16	23	4	26	0
Oshawa	2,384	284	83	9	44	4	0	0	0	0
Ottawa/Macdonald-Cartier International	2,811	178	1,009	267	715	2,628	1,758	880	180	174
Pitt Meadows	3,414	95	108	2	4	0	2	0	0	0
Prince George	700	224	217	653	21	453	171	4	0	0
Québec/Jean Lesage International	3,199	721	940	377	1,420	1,690	30	22	3	40
Regina International	1,142	450	363	341	81	611	625	2	78	0
Saskatoon/John G. Diefenbaker International	1,919	380	713	610	251	711	843	4	36	0
Sault Ste. Marie	1,498	117	516	55	251	158	2	4	0	0
St. John's International	146	21	393	483	699	179	914	309	64	11
St-Jean	2,765	98	74	0	4	0	0	0	0	0
Sudbury	425	354	1,249	111	157	236	6	4	0	0
Thunder Bay	1,136	195	2,456	261	214	679	209	6	0	0
Toronto/Buttonville Municipal	7,802	595	519	135	54	21	2	0	0	0
Toronto/City Centre	3,041	386	679	33	15	830	0	4	0	2
Toronto/Lester B. Pearson International	48	348	379	2,503	4,200	8,049	12,118	3,842	567	4,420
Vancouver Harbour	203	4,487	1,531	6	2	0	0	0	0	0
Vancouver International	1,250	4,920	1,205	3,067	2,824	4,314	6,183	1,880	408	2,573
Victoria International	4,315	1,057	269	507	1,113	741	589	68	39	10
Whitehorse International	842	222	155	44	12	86	235	0	0	16
Windsor	1,278	194	61	130	311	124	4	2	0	0
Winnipeg/James Armstrong Richardson International	625	733	3,304	444	759	1,509	2,584	394	697	31
Winnipeg/St. Andrews	2,684	637	99	0	2	0	0	0	0	0
Yellowknife	495	707	933	208	386	1,007	593	214	0	0
<b>Total of NAV CANADA towers (42)</b>	<b>95,621</b>	<b>24,057</b>	<b>25,989</b>	<b>18,180</b>	<b>21,878</b>	<b>39,459</b>	<b>46,755</b>	<b>11,608</b>	<b>4,220</b>	<b>10,848</b>

**Table 6-2**  
**Itinerant movements by aircraft weight group — NAV CANADA flight service stations**

	Gross take-off weight in kilograms									
	2 000	2 001	4 001	5 671	9 001	18 001	35 001	70 001	90 001	136 001
	and under	to 4 000	to 5 670	to 9 000	to 18 000	to 35 000	to 70 000	to 90 000	to 136 000	and over
	number									
Brandon Municipal	1,206	52	201	20	16	0	0	48	0	0
Campbell River	1,099	103	135	445	303	19	2	0	0	0
Castlegar	597	28	140	96	9	208	39	0	0	4
Charlottetown	866	238	79	26	247	404	86	0	0	0
Churchill	77	18	156	64	220	202	0	0	0	0
Cranbrook	283	74	75	276	75	109	0	6	0	0
Deer Lake	93	54	153	148	860	67	156	0	0	0
Fort McMurray	2,914	1,124	584	521	240	525	305	0	2	0
Fort Nelson	919	235	120	138	96	4	0	0	0	0
Fort St John	1,295	165	247	238	98	223	0	0	0	0
Fredericton International	1,136	164	216	318	120	410	0	6	0	6
Grande Prairie	825	260	491	241	22	442	120	0	0	0
High Level	404	69	144	120	12	0	0	0	0	0
Îles-de-la-Madeleine	15	52	111	5	66	117	0	0	0	0
Inuvik/Mike Zubko	555	46	756	137	30	187	125	29	0	0
Iqaluit	124	46	660	147	90	448	197	20	102	6
Kamloops	946	229	133	269	116	358	0	0	0	0
Kenora	188	63	553	23	22	6	0	2	0	0
Kingston	1,463	127	139	439	107	18	0	26	0	0
Kuujuuaq	103	18	737	2	130	44	13	0	99	0
Kuujuuarapik	9	22	268	4	172	72	0	0	0	0
La Grande Rivière	32	106	136	22	149	328	0	0	0	0
La Ronge	81	179	448	104	265	185	0	0	0	0
Lethbridge	923	169	199	442	18	14	0	0	0	0
Lloydminster	587	98	107	116	6	0	0	0	0	0
Medicine Hat	529	158	216	238	16	4	0	0	0	0
Mont-Joli	350	56	146	54	115	57	0	0	0	0
Nanaimo	1,290	416	118	81	71	285	0	0	0	0
Norman Wells	705	258	371	10	1	35	141	0	0	0
North Bay	1,217	225	275	107	207	85	3	20	0	0
Ottawa/Gatineau	1,227	143	201	83	14	44	0	6	0	0
Peace River	334	82	327	42	22	0	0	0	0	0
Penticton	1,107	93	113	314	43	201	3	0	0	0
Port Hardy	152	274	456	143	246	6	6	0	0	0
Prince Albert	184	152	234	287	310	370	0	0	0	0
Prince Rupert	130	101	56	36	64	139	0	0	0	0
Rankin Inlet	231	123	406	130	316	32	145	4	0	0
Red Deer Regional	1,561	170	400	96	71	23	5	2	0	0
Rouyn-Noranda	175	19	318	12	232	145	56	0	0	0
Saint John	406	279	176	272	198	297	59	2	0	0
Sept-Îles	392	378	466	151	584	100	1	0	0	0
Sioux Lookout	116	219	1,625	398	0	0	0	0	0	0
Smithers	577	128	129	221	174	125	0	0	0	0
St Anthony	2	11	207	11	38	0	0	0	0	0
St Catharines	3,616	137	48	20	23	17	2	2	0	0
Terrace	668	36	78	246	244	185	4	0	0	0
Thompson	296	595	1,275	12	264	228	0	0	0	0
Timmins	192	286	900	107	395	184	0	0	0	0
Val-D'or	325	51	305	28	261	85	12	0	67	0
Victoria Harbour	75	2,663	1,440	0	11	0	0	0	0	0
Wabush	61	53	97	62	381	52	0	0	0	0
Whitecourt	926	85	53	24	4	0	2	0	0	0
Williams Lake	419	124	44	386	16	5	1	0	0	0
<b>Total of all flight service stations (53)</b>	<b>34,003</b>	<b>11,054</b>	<b>17,468</b>	<b>7,932</b>	<b>7,810</b>	<b>7,094</b>	<b>1,483</b>	<b>173</b>	<b>270</b>	<b>16</b>

**Table 7-1**  
**Itinerant movements, domestic, transborder and international — NAV CANADA towers**

	Total	Air carrier movements		Other commercial movements	Private movements	Government movements	
		Levels I to III and foreign	Levels IV to VI			Civil	Military
number							
<b>Abbotsford</b>							
Domestic	5,721	518	2,338	1,470	1,165	188	42
Transborder	71	12	7	1	51	0	0
Other international	0	0	0	0	0	0	0
<b>Total</b>	<b>5,792</b>	<b>530</b>	<b>2,345</b>	<b>1,471</b>	<b>1,216</b>	<b>188</b>	<b>42</b>
<b>Boundary Bay</b>							
Domestic	6,762	14	1,060	4,174	1,474	38	2
Transborder	87	0	1	50	36	0	0
Other international	0	0	0	0	0	0	0
<b>Total</b>	<b>6,849</b>	<b>14</b>	<b>1,061</b>	<b>4,224</b>	<b>1,510</b>	<b>38</b>	<b>2</b>
<b>Calgary International</b>							
Domestic	17,045	13,588	1,280	917	873	166	221
Transborder	3,321	2,867	67	46	328	2	11
Other international	546	532	0	1	3	0	10
<b>Total</b>	<b>20,912</b>	<b>16,987</b>	<b>1,347</b>	<b>964</b>	<b>1,204</b>	<b>168</b>	<b>242</b>
<b>Calgary/Springbank</b>							
Domestic	6,225	62	766	3,051	2,305	29	12
Transborder	74	1	4	2	67	0	0
Other international	0	0	0	0	0	0	0
<b>Total</b>	<b>6,299</b>	<b>63</b>	<b>770</b>	<b>3,053</b>	<b>2,372</b>	<b>29</b>	<b>12</b>
<b>Chicoutimi/St-Honoré</b>							
Domestic	3,105	28	807	2,014	235	2	19
Transborder	0	0	0	0	0	0	0
Other international	0	0	0	0	0	0	0
<b>Total</b>	<b>3,105</b>	<b>28</b>	<b>807</b>	<b>2,014</b>	<b>235</b>	<b>2</b>	<b>19</b>
<b>Edmonton City Centre</b>							
Domestic	6,027	1,636	677	1,605	1,632	390	87
Transborder	37	0	12	2	23	0	0
Other international	0	0	0	0	0	0	0
<b>Total</b>	<b>6,064</b>	<b>1,636</b>	<b>689</b>	<b>1,607</b>	<b>1,655</b>	<b>390</b>	<b>87</b>
<b>Edmonton International</b>							
Domestic	8,832	7,897	429	67	254	62	123
Transborder	1,095	1,009	12	3	68	1	2
Other international	97	96	0	0	1	0	0
<b>Total</b>	<b>10,024</b>	<b>9,002</b>	<b>441</b>	<b>70</b>	<b>323</b>	<b>63</b>	<b>125</b>
<b>Edmonton/Villeneuve</b>							
Domestic	1,414	2	176	753	453	5	25
Transborder	1	0	0	0	1	0	0
Other international	1	0	0	0	1	0	0
<b>Total</b>	<b>1,416</b>	<b>2</b>	<b>176</b>	<b>753</b>	<b>455</b>	<b>5</b>	<b>25</b>
<b>Gander International</b>							
Domestic	2,419	320	1,645	44	141	115	154
Transborder	373	103	0	16	181	1	72
Other international	442	140	5	19	186	1	91
<b>Total</b>	<b>3,234</b>	<b>563</b>	<b>1,650</b>	<b>79</b>	<b>508</b>	<b>117</b>	<b>317</b>
<b>Halifax/Robert L Stanfield International</b>							
Domestic	5,467	4,348	537	66	273	85	158
Transborder	1,204	1,029	44	1	116	0	14
Other international	411	215	144	6	28	8	10
<b>Total</b>	<b>7,082</b>	<b>5,592</b>	<b>725</b>	<b>73</b>	<b>417</b>	<b>93</b>	<b>182</b>
<b>Hamilton</b>							
Domestic	3,418	1,482	947	252	515	193	29
Transborder	526	391	8	0	124	0	3
Other international	169	160	0	1	8	0	0
<b>Total</b>	<b>4,113</b>	<b>2,033</b>	<b>955</b>	<b>253</b>	<b>647</b>	<b>193</b>	<b>32</b>



Table 7-1 – continued

## Itinerant movements, domestic, transborder and international — NAV CANADA towers

	Total	Air carrier movements		Other commercial movements	Private movements	Government movements	
		Levels I to III and foreign	Levels IV to VI			Civil	Military
number							
<b>Kelowna</b>							
Domestic	3,975	2,034	176	948	685	101	31
Transborder	346	247	5	4	89	0	1
Other international	2	0	0	0	2	0	0
<b>Total</b>	<b>4,323</b>	<b>2,281</b>	<b>181</b>	<b>952</b>	<b>776</b>	<b>101</b>	<b>32</b>
<b>Kitchener/Waterloo</b>							
Domestic	4,692	144	2,347	902	1,225	15	59
Transborder	385	184	49	9	140	2	1
Other international	2	0	2	0	0	0	0
<b>Total</b>	<b>5,079</b>	<b>328</b>	<b>2,398</b>	<b>911</b>	<b>1,365</b>	<b>17</b>	<b>60</b>
<b>Langley</b>							
Domestic	3,400	129	155	1,681	1,431	2	2
Transborder	12	0	0	0	12	0	0
Other international	6	0	0	0	6	0	0
<b>Total</b>	<b>3,418</b>	<b>129</b>	<b>155</b>	<b>1,681</b>	<b>1,449</b>	<b>2</b>	<b>2</b>
<b>London</b>							
Domestic	5,297	1,028	1,127	1,794	1,217	94	37
Transborder	474	268	15	13	176	2	0
Other international	1	0	0	0	1	0	0
<b>Total</b>	<b>5,772</b>	<b>1,296</b>	<b>1,142</b>	<b>1,807</b>	<b>1,394</b>	<b>96</b>	<b>37</b>
<b>Moncton/Greater Moncton International</b>							
Domestic	6,200	1,693	3,408	546	314	190	49
Transborder	82	65	1	1	15	0	0
Other international	13	12	0	0	1	0	0
<b>Total</b>	<b>6,295</b>	<b>1,770</b>	<b>3,409</b>	<b>547</b>	<b>330</b>	<b>190</b>	<b>49</b>
<b>Montréal/Mirabel International</b>							
Domestic	1,497	556	279	42	543	24	53
Transborder	166	166	0	0	0	0	0
Other international	1	1	0	0	0	0	0
<b>Total</b>	<b>1,664</b>	<b>723</b>	<b>279</b>	<b>42</b>	<b>543</b>	<b>24</b>	<b>53</b>
<b>Montréal/Pierre Elliott Trudeau International</b>							
Domestic	11,558	9,398	756	280	897	203	24
Transborder	5,958	5,200	44	53	648	0	13
Other international	2,185	1,980	24	17	157	2	5
<b>Total</b>	<b>19,701</b>	<b>16,578</b>	<b>824</b>	<b>350</b>	<b>1,702</b>	<b>205</b>	<b>42</b>
<b>Montréal/St-Hubert</b>							
Domestic	6,864	2,304	680	2,085	1,571	73	151
Transborder	156	9	6	5	135	0	1
Other international	2	0	0	0	2	0	0
<b>Total</b>	<b>7,022</b>	<b>2,313</b>	<b>686</b>	<b>2,090</b>	<b>1,708</b>	<b>73</b>	<b>152</b>
<b>Oshawa</b>							
Domestic	2,760	142	112	1,576	922	2	6
Transborder	48	11	1	5	31	0	0
Other international	0	0	0	0	0	0	0
<b>Total</b>	<b>2,808</b>	<b>153</b>	<b>113</b>	<b>1,581</b>	<b>953</b>	<b>2</b>	<b>6</b>
<b>Ottawa/Macdonald-Cartier International</b>							
Domestic	8,377	4,472	430	2,230	451	600	194
Transborder	2,104	1,936	12	12	119	12	13
Other international	119	90	8	5	9	1	6
<b>Total</b>	<b>10,600</b>	<b>6,498</b>	<b>450</b>	<b>2,247</b>	<b>579</b>	<b>613</b>	<b>213</b>
<b>Pitt Meadows</b>							
Domestic	3,617	24	629	1,199	1,685	12	68
Transborder	8	0	0	0	8	0	0
Other international	0	0	0	0	0	0	0
<b>Total</b>	<b>3,625</b>	<b>24</b>	<b>629</b>	<b>1,199</b>	<b>1,693</b>	<b>12</b>	<b>68</b>

Table 7-1 – continued

## Itinerant movements, domestic, transborder and international — NAV CANADA towers

	Total	Air carrier movements		Other commercial movements	Private movements	Government movements	
		Levels I to III and foreign	Levels IV to VI			Civil	Military
number							
<b>Prince George</b>							
Domestic	2,423	1,317	324	233	431	64	54
Transborder	20	1	0	0	19	0	0
Other international	0	0	0	0	0	0	0
<b>Total</b>	<b>2,443</b>	<b>1,318</b>	<b>324</b>	<b>233</b>	<b>450</b>	<b>64</b>	<b>54</b>
<b>Québec/Jean Lesage International</b>							
Domestic	7,811	3,533	550	1,947	1,261	340	180
Transborder	607	502	2	4	92	4	3
Other international	24	21	0	0	0	0	3
<b>Total</b>	<b>8,442</b>	<b>4,056</b>	<b>552</b>	<b>1,951</b>	<b>1,353</b>	<b>344</b>	<b>186</b>
<b>Regina International</b>							
Domestic	3,472	1,751	599	116	510	211	285
Transborder	221	133	1	2	76	3	6
Other international	0	0	0	0	0	0	0
<b>Total</b>	<b>3,693</b>	<b>1,884</b>	<b>600</b>	<b>118</b>	<b>586</b>	<b>214</b>	<b>291</b>
<b>Saskatoon/John G Diefenbaker International</b>							
Domestic	5,276	2,665	867	483	662	342	257
Transborder	191	118	0	3	66	2	2
Other international	0	0	0	0	0	0	0
<b>Total</b>	<b>5,467</b>	<b>2,783</b>	<b>867</b>	<b>486</b>	<b>728</b>	<b>344</b>	<b>259</b>
<b>Sault Ste. Marie</b>							
Domestic	2,559	795	150	1,199	292	80	43
Transborder	40	3	1	1	34	1	0
Other international	2	0	0	0	2	0	0
<b>Total</b>	<b>2,601</b>	<b>798</b>	<b>151</b>	<b>1,200</b>	<b>328</b>	<b>81</b>	<b>43</b>
<b>St. John's International</b>							
Domestic	2,764	1,276	1,082	40	126	154	86
Transborder	236	91	1	8	52	0	84
Other international	219	61	3	16	51	2	86
<b>Total</b>	<b>3,219</b>	<b>1,428</b>	<b>1,086</b>	<b>64</b>	<b>229</b>	<b>156</b>	<b>256</b>
<b>St-Jean</b>							
Domestic	2,939	100	180	252	1,272	38	1,097
Transborder	2	0	1	0	1	0	0
Other international	0	0	0	0	0	0	0
<b>Total</b>	<b>2,941</b>	<b>100</b>	<b>181</b>	<b>252</b>	<b>1,273</b>	<b>38</b>	<b>1,097</b>
<b>Sudbury</b>							
Domestic	2,519	1,400	596	61	277	138	47
Transborder	23	2	2	0	19	0	0
Other international	0	0	0	0	0	0	0
<b>Total</b>	<b>2,542</b>	<b>1,402</b>	<b>598</b>	<b>61</b>	<b>296</b>	<b>138</b>	<b>47</b>
<b>Thunder Bay</b>							
Domestic	4,973	3,022	654	843	216	151	87
Transborder	183	125	4	3	50	0	1
Other international	0	0	0	0	0	0	0
<b>Total</b>	<b>5,156</b>	<b>3,147</b>	<b>658</b>	<b>846</b>	<b>266</b>	<b>151</b>	<b>88</b>
<b>Toronto/Buttonville Municipal</b>							
Domestic	8,767	431	889	4,969	2,383	87	8
Transborder	359	83	36	15	225	0	0
Other international	2	0	0	1	1	0	0
<b>Total</b>	<b>9,128</b>	<b>514</b>	<b>925</b>	<b>4,985</b>	<b>2,609</b>	<b>87</b>	<b>8</b>
<b>Toronto/City Centre</b>							
Domestic	4,745	1,049	1,063	1,729	832	26	46
Transborder	245	6	23	4	212	0	0
Other international	0	0	0	0	0	0	0
<b>Total</b>	<b>4,990</b>	<b>1,055</b>	<b>1,086</b>	<b>1,733</b>	<b>1,044</b>	<b>26</b>	<b>46</b>

Table 7-1 – continued

## Itinerant movements, domestic, transborder and international — NAV CANADA towers

	Total	Air carrier movements		Other commercial movements	Private movements	Government movements	
		Levels I to III and foreign	Levels IV to VI			Civil	Military
	number						
<b>Toronto/Lester B Pearson International</b>							
Domestic	16,974	15,985	307	98	503	27	54
Transborder	15,390	14,243	70	97	970	0	10
Other international	4,110	4,051	8	14	37	0	0
<b>Total</b>	<b>36,474</b>	<b>34,279</b>	<b>385</b>	<b>209</b>	<b>1,510</b>	<b>27</b>	<b>64</b>
<b>Vancouver Harbour</b>							
Domestic	6,102	5,248	338	302	209	5	0
Transborder	127	82	10	1	34	0	0
Other international	0	0	0	0	0	0	0
<b>Total</b>	<b>6,229</b>	<b>5,330</b>	<b>348</b>	<b>303</b>	<b>243</b>	<b>5</b>	<b>0</b>
<b>Vancouver International</b>							
Domestic	21,254	18,107	1,795	255	764	320	13
Transborder	5,643	5,193	16	10	417	1	6
Other international	1,727	1,644	66	1	10	2	4
<b>Total</b>	<b>28,624</b>	<b>24,944</b>	<b>1,877</b>	<b>266</b>	<b>1,191</b>	<b>323</b>	<b>23</b>
<b>Victoria International</b>							
Domestic	7,833	2,703	2,673	810	1,507	55	85
Transborder	800	404	32	3	352	0	9
Other international	75	2	11	13	44	0	5
<b>Total</b>	<b>8,708</b>	<b>3,109</b>	<b>2,716</b>	<b>826</b>	<b>1,903</b>	<b>55</b>	<b>99</b>
<b>Whitehorse International</b>							
Domestic	1,509	617	494	16	335	36	11
Transborder	93	13	2	1	76	0	1
Other international	10	8	0	1	1	0	0
<b>Total</b>	<b>1,612</b>	<b>638</b>	<b>496</b>	<b>18</b>	<b>412</b>	<b>36</b>	<b>12</b>
<b>Windsor</b>							
Domestic	1,960	534	981	65	374	6	0
Transborder	139	41	20	3	69	0	6
Other international	5	0	2	1	2	0	0
<b>Total</b>	<b>2,104</b>	<b>575</b>	<b>1,003</b>	<b>69</b>	<b>445</b>	<b>6</b>	<b>6</b>
<b>Winnipeg/James Armstrong Richardson International</b>							
Domestic	9,917	8,069	596	97	402	279	474
Transborder	1,147	990	13	6	124	8	6
Other international	16	11	0	0	2	0	3
<b>Total</b>	<b>11,080</b>	<b>9,070</b>	<b>609</b>	<b>103</b>	<b>528</b>	<b>287</b>	<b>483</b>
<b>Winnipeg/St. Andrews</b>							
Domestic	3,418	418	1,491	1,116	375	4	14
Transborder	4	0	0	1	3	0	0
Other international	0	0	0	0	0	0	0
<b>Total</b>	<b>3,422</b>	<b>418</b>	<b>1,491</b>	<b>1,117</b>	<b>378</b>	<b>4</b>	<b>14</b>
<b>Yellowknife</b>							
Domestic	4,539	3,431	561	135	251	64	97
Transborder	1	1	0	0	0	0	0
Other international	3	0	0	1	0	0	2
<b>Total</b>	<b>4,543</b>	<b>3,432</b>	<b>561</b>	<b>136</b>	<b>251</b>	<b>64</b>	<b>99</b>
<b>Total of NAV CANADA towers (42)</b>							
Domestic	246,426	124,270	36,951	42,462	33,243	5,016	4,484
Transborder	41,999	35,529	522	385	5,259	39	265
Other international	10,190	9,024	273	97	555	16	225
<b>Total</b>	<b>298,615</b>	<b>168,823</b>	<b>37,746</b>	<b>42,944</b>	<b>39,057</b>	<b>5,071</b>	<b>4,974</b>

**Table 7-2**  
**Itinerant movements, domestic, transborder and international — NAV CANADA flight service stations**

	Total	Air carrier movements		Other commercial movements	Private movements	Government movements	
		Levels I to III and foreign	Levels IV to VI			Civil	Military
number							
<b>Brandon Municipal</b>							
Domestic	1,535	131	242	58	618	22	464
Transborder	8	1	0	0	7	0	0
Other international	0	0	0	0	0	0	0
<b>Total</b>	<b>1,543</b>	<b>132</b>	<b>242</b>	<b>58</b>	<b>625</b>	<b>22</b>	<b>464</b>
<b>Campbell River</b>							
Domestic	1,992	743	281	416	474	48	30
Transborder	114	14	0	0	100	0	0
Other international	0	0	0	0	0	0	0
<b>Total</b>	<b>2,106</b>	<b>757</b>	<b>281</b>	<b>416</b>	<b>574</b>	<b>48</b>	<b>30</b>
<b>Castlegar</b>							
Domestic	1,107	299	387	318	78	17	8
Transborder	14	0	0	0	14	0	0
Other international	0	0	0	0	0	0	0
<b>Total</b>	<b>1,121</b>	<b>299</b>	<b>387</b>	<b>318</b>	<b>92</b>	<b>17</b>	<b>8</b>
<b>Charlottetown</b>							
Domestic	1,810	755	178	500	323	23	31
Transborder	135	99	1	1	34	0	0
Other international	1	0	0	0	1	0	0
<b>Total</b>	<b>1,946</b>	<b>854</b>	<b>179</b>	<b>501</b>	<b>358</b>	<b>23</b>	<b>31</b>
<b>Churchill</b>							
Domestic	733	608	72	6	24	19	4
Transborder	4	1	0	0	3	0	0
Other international	0	0	0	0	0	0	0
<b>Total</b>	<b>737</b>	<b>609</b>	<b>72</b>	<b>6</b>	<b>27</b>	<b>19</b>	<b>4</b>
<b>Cranbrook</b>							
Domestic	864	513	58	87	177	6	23
Transborder	34	0	0	0	32	0	2
Other international	0	0	0	0	0	0	0
<b>Total</b>	<b>898</b>	<b>513</b>	<b>58</b>	<b>87</b>	<b>209</b>	<b>6</b>	<b>25</b>
<b>Deer Lake</b>							
Domestic	1,520	785	563	84	37	48	3
Transborder	3	2	0	0	1	0	0
Other international	8	8	0	0	0	0	0
<b>Total</b>	<b>1,531</b>	<b>795</b>	<b>563</b>	<b>84</b>	<b>38</b>	<b>48</b>	<b>3</b>
<b>Fort McMurray</b>							
Domestic	6,211	3,121	1,517	614	892	57	10
Transborder	4	0	0	0	4	0	0
Other international	0	0	0	0	0	0	0
<b>Total</b>	<b>6,215</b>	<b>3,121</b>	<b>1,517</b>	<b>614</b>	<b>896</b>	<b>57</b>	<b>10</b>
<b>Fort Nelson</b>							
Domestic	1,511	323	601	443	128	8	8
Transborder	1	0	0	0	1	0	0
Other international	0	0	0	0	0	0	0
<b>Total</b>	<b>1,512</b>	<b>323</b>	<b>601</b>	<b>443</b>	<b>129</b>	<b>8</b>	<b>8</b>
<b>Fort St John</b>							
Domestic	2,264	726	899	332	291	14	2
Transborder	2	0	0	0	2	0	0
Other international	0	0	0	0	0	0	0
<b>Total</b>	<b>2,266</b>	<b>726</b>	<b>899</b>	<b>332</b>	<b>293</b>	<b>14</b>	<b>2</b>
<b>Fredericton International</b>							
Domestic	2,183	671	504	45	637	162	164
Transborder	192	121	13	2	53	0	3
Other international	1	1	0	0	0	0	0
<b>Total</b>	<b>2,376</b>	<b>793</b>	<b>517</b>	<b>47</b>	<b>690</b>	<b>162</b>	<b>167</b>

Table 7-2 – continued

## Itinerant movements, domestic, transborder and international — NAV CANADA flight service stations

	Total	Air carrier movements		Other commercial movements	Private movements	Government movements	
		Levels I to III and foreign	Levels IV to VI			Civil	Military
number							
<b>Grande Prairie</b>							
Domestic	2,397	1,174	566	84	557	14	2
Transborder	4	0	0	0	4	0	0
Other international	0	0	0	0	0	0	0
<b>Total</b>	<b>2,401</b>	<b>1,174</b>	<b>566</b>	<b>84</b>	<b>561</b>	<b>14</b>	<b>2</b>
<b>High Level</b>							
Domestic	747	195	306	169	67	10	0
Transborder	2	0	0	0	2	0	0
Other international	0	0	0	0	0	0	0
<b>Total</b>	<b>749</b>	<b>195</b>	<b>306</b>	<b>169</b>	<b>69</b>	<b>10</b>	<b>0</b>
<b>Îles-de-la-Madeleine</b>							
Domestic	361	270	21	20	16	32	2
Transborder	5	0	0	0	5	0	0
Other international	0	0	0	0	0	0	0
<b>Total</b>	<b>366</b>	<b>270</b>	<b>21</b>	<b>20</b>	<b>21</b>	<b>32</b>	<b>2</b>
<b>Inuvik/Mike Zubko</b>							
Domestic	1,847	399	1,194	0	31	36	187
Transborder	18	16	0	0	2	0	0
Other international	0	0	0	0	0	0	0
<b>Total</b>	<b>1,865</b>	<b>415</b>	<b>1,194</b>	<b>0</b>	<b>33</b>	<b>36</b>	<b>187</b>
<b>Iqaluit</b>							
Domestic	1,693	1,277	192	38	31	124	31
Transborder	56	17	19	0	20	0	0
Other international	91	36	3	6	40	0	6
<b>Total</b>	<b>1,840</b>	<b>1,330</b>	<b>214</b>	<b>44</b>	<b>91</b>	<b>124</b>	<b>37</b>
<b>Kamloops</b>							
Domestic	2,024	758	333	425	413	78	17
Transborder	27	3	4	1	18	0	1
Other international	0	0	0	0	0	0	0
<b>Total</b>	<b>2,051</b>	<b>761</b>	<b>337</b>	<b>426</b>	<b>431</b>	<b>78</b>	<b>18</b>
<b>Kenora</b>							
Domestic	799	343	277	28	107	21	23
Transborder	58	6	5	0	47	0	0
Other international	0	0	0	0	0	0	0
<b>Total</b>	<b>857</b>	<b>349</b>	<b>282</b>	<b>28</b>	<b>154</b>	<b>21</b>	<b>23</b>
<b>Kingston</b>							
Domestic	2,263	548	364	499	751	36	65
Transborder	56	5	7	3	40	0	1
Other international	0	0	0	0	0	0	0
<b>Total</b>	<b>2,319</b>	<b>553</b>	<b>371</b>	<b>502</b>	<b>791</b>	<b>36</b>	<b>66</b>
<b>Kuujuuaq</b>							
Domestic	1,140	946	110	3	57	24	0
Transborder	3	1	0	0	2	0	0
Other international	3	2	0	0	1	0	0
<b>Total</b>	<b>1,146</b>	<b>949</b>	<b>110</b>	<b>3</b>	<b>60</b>	<b>24</b>	<b>0</b>
<b>Kuujuarapik</b>							
Domestic	547	514	28	0	5	0	0
Transborder	0	0	0	0	0	0	0
Other international	0	0	0	0	0	0	0
<b>Total</b>	<b>547</b>	<b>514</b>	<b>28</b>	<b>0</b>	<b>5</b>	<b>0</b>	<b>0</b>
<b>La Grande Rivière</b>							
Domestic	773	523	201	5	26	18	0
Transborder	0	0	0	0	0	0	0
Other international	0	0	0	0	0	0	0
<b>Total</b>	<b>773</b>	<b>523</b>	<b>201</b>	<b>5</b>	<b>26</b>	<b>18</b>	<b>0</b>
<b>La Ronge</b>							
Domestic	1,261	1,078	26	27	44	73	13
Transborder	1	0	0	0	0	1	0
Other international	0	0	0	0	0	0	0
<b>Total</b>	<b>1,262</b>	<b>1,078</b>	<b>26</b>	<b>27</b>	<b>44</b>	<b>74</b>	<b>13</b>

Table 7-2 – continued

## Itinerant movements, domestic, transborder and international — NAV CANADA flight service stations

	Total	Air carrier movements		Other commercial movements	Private movements	Government movements	
		Levels I to III and foreign	Levels IV to VI			Civil	Military
	number						
<b>Lethbridge</b>							
Domestic	1,664	515	42	612	449	16	30
Transborder	101	4	2	2	93	0	0
Other international	0	0	0	0	0	0	0
<b>Total</b>	<b>1,765</b>	<b>519</b>	<b>44</b>	<b>614</b>	<b>542</b>	<b>16</b>	<b>30</b>
<b>Lloydminster</b>							
Domestic	902	129	273	46	423	17	14
Transborder	12	1	0	0	11	0	0
Other international	0	0	0	0	0	0	0
<b>Total</b>	<b>914</b>	<b>130</b>	<b>273</b>	<b>46</b>	<b>434</b>	<b>17</b>	<b>14</b>
<b>Medicine Hat</b>							
Domestic	1,149	689	74	77	285	4	20
Transborder	12	4	0	0	8	0	0
Other international	0	0	0	0	0	0	0
<b>Total</b>	<b>1,161</b>	<b>693</b>	<b>74</b>	<b>77</b>	<b>293</b>	<b>4</b>	<b>20</b>
<b>Mont-Joli</b>							
Domestic	778	424	2	22	66	6	258
Transborder	0	0	0	0	0	0	0
Other international	0	0	0	0	0	0	0
<b>Total</b>	<b>778</b>	<b>424</b>	<b>2</b>	<b>22</b>	<b>66</b>	<b>6</b>	<b>258</b>
<b>Nanaimo</b>							
Domestic	2,153	483	594	169	783	52	72
Transborder	108	14	3	0	91	0	0
Other international	0	0	0	0	0	0	0
<b>Total</b>	<b>2,261</b>	<b>497</b>	<b>597</b>	<b>169</b>	<b>874</b>	<b>52</b>	<b>72</b>
<b>Norman Wells</b>							
Domestic	1,521	795	465	53	194	12	2
Transborder	0	0	0	0	0	0	0
Other international	0	0	0	0	0	0	0
<b>Total</b>	<b>1,521</b>	<b>795</b>	<b>465</b>	<b>53</b>	<b>194</b>	<b>12</b>	<b>2</b>
<b>North Bay</b>							
Domestic	2,076	507	423	391	622	49	84
Transborder	61	5	3	0	53	0	0
Other international	2	0	0	0	2	0	0
<b>Total</b>	<b>2,139</b>	<b>512</b>	<b>426</b>	<b>391</b>	<b>677</b>	<b>49</b>	<b>84</b>
<b>Ottawa/Gatineau</b>							
Domestic	1,713	141	295	308	770	133	66
Transborder	5	0	1	0	4	0	0
Other international	0	0	0	0	0	0	0
<b>Total</b>	<b>1,718</b>	<b>141</b>	<b>296</b>	<b>308</b>	<b>774</b>	<b>133</b>	<b>66</b>
<b>Peace River</b>							
Domestic	803	359	282	15	129	18	0
Transborder	4	0	0	0	4	0	0
Other international	0	0	0	0	0	0	0
<b>Total</b>	<b>807</b>	<b>359</b>	<b>282</b>	<b>15</b>	<b>133</b>	<b>18</b>	<b>0</b>
<b>Penticton</b>							
Domestic	1,845	495	748	118	393	26	65
Transborder	29	2	2	0	25	0	0
Other international	0	0	0	0	0	0	0
<b>Total</b>	<b>1,874</b>	<b>497</b>	<b>750</b>	<b>118</b>	<b>418</b>	<b>26</b>	<b>65</b>
<b>Port Hardy</b>							
Domestic	1,244	952	115	8	64	86	19
Transborder	39	3	0	0	32	0	4
Other international	0	0	0	0	0	0	0
<b>Total</b>	<b>1,283</b>	<b>955</b>	<b>115</b>	<b>8</b>	<b>96</b>	<b>86</b>	<b>23</b>

Table 7-2 – continued

## Itinerant movements, domestic, transborder and international — NAV CANADA flight service stations

	Total	Air carrier movements		Other commercial movements	Private movements	Government movements	
		Levels I to III and foreign	Levels IV to VI			Civil	Military
number							
<b>Prince Albert</b>							
Domestic	1,530	1,062	38	105	164	148	13
Transborder	7	1	0	0	6	0	0
Other international	0	0	0	0	0	0	0
<b>Total</b>	<b>1,537</b>	<b>1,063</b>	<b>38</b>	<b>105</b>	<b>170</b>	<b>148</b>	<b>13</b>
<b>Prince Rupert</b>							
Domestic	498	239	142	24	39	54	0
Transborder	26	2	0	0	24	0	0
Other international	2	0	0	0	2	0	0
<b>Total</b>	<b>526</b>	<b>241</b>	<b>142</b>	<b>24</b>	<b>65</b>	<b>54</b>	<b>0</b>
<b>Rankin Inlet</b>							
Domestic	1,387	1,098	263	4	4	10	8
Transborder	0	0	0	0	0	0	0
Other international	0	0	0	0	0	0	0
<b>Total</b>	<b>1,387</b>	<b>1,098</b>	<b>263</b>	<b>4</b>	<b>4</b>	<b>10</b>	<b>8</b>
<b>Red Deer Regional</b>							
Domestic	2,312	455	892	166	710	44	45
Transborder	16	7	2	1	6	0	0
Other international	0	0	0	0	0	0	0
<b>Total</b>	<b>2,328</b>	<b>462</b>	<b>894</b>	<b>167</b>	<b>716</b>	<b>44</b>	<b>45</b>
<b>Rouyn-Noranda</b>							
Domestic	957	561	122	68	172	32	2
Transborder	0	0	0	0	0	0	0
Other international	0	0	0	0	0	0	0
<b>Total</b>	<b>957</b>	<b>561</b>	<b>122</b>	<b>68</b>	<b>172</b>	<b>32</b>	<b>2</b>
<b>Saint John</b>							
Domestic	1,568	794	199	188	329	16	42
Transborder	115	11	3	5	96	0	0
Other international	6	0	0	0	6	0	0
<b>Total</b>	<b>1,689</b>	<b>805</b>	<b>202</b>	<b>193</b>	<b>431</b>	<b>16</b>	<b>42</b>
<b>Sept-Îles</b>							
Domestic	2,058	1,369	527	23	83	52	4
Transborder	12	1	0	2	9	0	0
Other international	2	1	0	0	1	0	0
<b>Total</b>	<b>2,072</b>	<b>1,371</b>	<b>527</b>	<b>25</b>	<b>93</b>	<b>52</b>	<b>4</b>
<b>Sioux Lookout</b>							
Domestic	2,339	1,992	222	48	59	16	2
Transborder	19	0	0	0	19	0	0
Other international	0	0	0	0	0	0	0
<b>Total</b>	<b>2,358</b>	<b>1,992</b>	<b>222</b>	<b>48</b>	<b>78</b>	<b>16</b>	<b>2</b>
<b>Smithers</b>							
Domestic	1,334	618	324	83	183	12	114
Transborder	20	1	0	0	19	0	0
Other international	0	0	0	0	0	0	0
<b>Total</b>	<b>1,354</b>	<b>619</b>	<b>324</b>	<b>83</b>	<b>202</b>	<b>12</b>	<b>114</b>
<b>St Anthony</b>							
Domestic	269	46	146	60	7	10	0
Transborder	0	0	0	0	0	0	0
Other international	0	0	0	0	0	0	0
<b>Total</b>	<b>269</b>	<b>46</b>	<b>146</b>	<b>60</b>	<b>7</b>	<b>10</b>	<b>0</b>
<b>St Catharines</b>							
Domestic	3,770	33	943	78	2,228	4	484
Transborder	95	12	8	0	75	0	0
Other international	0	0	0	0	0	0	0
<b>Total</b>	<b>3,865</b>	<b>45</b>	<b>951</b>	<b>78</b>	<b>2,303</b>	<b>4</b>	<b>484</b>
<b>Terrace</b>							
Domestic	1,458	683	608	65	78	18	6
Transborder	2	1	0	0	1	0	0
Other international	1	1	0	0	0	0	0
<b>Total</b>	<b>1,461</b>	<b>685</b>	<b>608</b>	<b>65</b>	<b>79</b>	<b>18</b>	<b>6</b>

Table 7-2 – continued

## Itinerant movements, domestic, transborder and international — NAV CANADA flight service stations

	Total	Air carrier movements		Other commercial movements	Private movements	Government movements	
		Levels I to III and foreign	Levels IV to VI			Civil	Military
number							
<b>Thompson</b>							
Domestic	2,667	2,071	370	25	67	133	1
Transborder	3	1	0	0	2	0	0
Other international	0	0	0	0	0	0	0
<b>Total</b>	<b>2,670</b>	<b>2,072</b>	<b>370</b>	<b>25</b>	<b>69</b>	<b>133</b>	<b>1</b>
<b>Timmins</b>							
Domestic	2,051	1,589	206	6	145	87	18
Transborder	13	0	0	0	13	0	0
Other international	0	0	0	0	0	0	0
<b>Total</b>	<b>2,064</b>	<b>1,589</b>	<b>206</b>	<b>6</b>	<b>158</b>	<b>87</b>	<b>18</b>
<b>Val-D'or</b>							
Domestic	1,133	745	59	67	240	18	4
Transborder	1	0	0	0	1	0	0
Other international	0	0	0	0	0	0	0
<b>Total</b>	<b>1,134</b>	<b>745</b>	<b>59</b>	<b>67</b>	<b>241</b>	<b>18</b>	<b>4</b>
<b>Victoria Harbour</b>							
Domestic	3,778	3,519	138	13	22	84	2
Transborder	411	0	2	0	408	1	0
Other international	0	0	0	0	0	0	0
<b>Total</b>	<b>4,189</b>	<b>3,519</b>	<b>140</b>	<b>13</b>	<b>430</b>	<b>85</b>	<b>2</b>
<b>Wabush</b>							
Domestic	706	348	266	13	44	31	4
Transborder	0	0	0	0	0	0	0
Other international	0	0	0	0	0	0	0
<b>Total</b>	<b>706</b>	<b>348</b>	<b>266</b>	<b>13</b>	<b>44</b>	<b>31</b>	<b>4</b>
<b>Whitecourt</b>							
Domestic	1,091	33	625	278	143	6	6
Transborder	3	0	0	0	3	0	0
Other international	0	0	0	0	0	0	0
<b>Total</b>	<b>1,094</b>	<b>33</b>	<b>625</b>	<b>278</b>	<b>146</b>	<b>6</b>	<b>6</b>
<b>Williams Lake</b>							
Domestic	986	400	149	106	307	20	4
Transborder	9	0	1	0	8	0	0
Other international	0	0	0	0	0	0	0
<b>Total</b>	<b>995</b>	<b>400</b>	<b>150</b>	<b>106</b>	<b>315</b>	<b>20</b>	<b>4</b>
<b>Total of all flight service stations (53)</b>							
Domestic	85,322	39,844	18,472	7,440	14,986	2,104	2,476
Transborder	1,864	356	76	17	1,402	2	11
Other international	117	49	3	6	53	0	6
<b>Total</b>	<b>87,303</b>	<b>40,249</b>	<b>18,551</b>	<b>7,463</b>	<b>16,441</b>	<b>2,106</b>	<b>2,493</b>



**Table 8-1**  
**Total aircraft movements, peak hour and peak day — NAV CANADA towers**

	Rank of movements	Number of movements	Peak hour occurrence			Peak day occurrence	
			Day in month	Hour in day	Number of movements	Day in month	Number of movements
Abbotsford	11	14,629	1	20	147	28	751
Boundary Bay	6	16,323	15	13	120	7	849
Calgary International	3	21,202	13	18	70	5	860
Calgary/Springbank	10	15,036	9	16	89	9	735
Chicoutimi/St-Honoré	12	13,383	11	9	157	10	1,230
Edmonton City Centre	25	7,650	13	7	70	13	457
Edmonton International	17	10,496	15	14	42	13	430
Edmonton/Villeneuve	29	6,604	15	11	68	15	475
Gander International	26	7,386	30	11	59	21	525
Halifax/Robert L Stanfield International	24	7,879	6	18	41	4	351
Hamilton	30	6,561	22	9	54	16	327
Kelowna	27	7,054	5	12	52	17	417
Kitchener/Waterloo	16	11,133	20	15	92	20	618
Langley	23	8,926	17	16	80	22	482
London	19	9,548	21	11	84	20	530
Moncton/Greater Moncton International	14	12,045	25	9	68	18	624
Montréal/Mirabel International	41	2,264	10	14	69	10	267
Montréal/Pierre Elliott Trudeau International	4	19,701	18	18	75	28	745
Montréal/St-Hubert	8	15,258	6	12	112	5	856
Oshawa	33	5,528	5	21	62	6	325
Ottawa/Macdonald-Cartier International	9	15,111	6	14	73	19	715
Pitt Meadows	18	10,331	8	11	132	23	707
Prince George	38	3,503	23	16	36	22	210
Québec/Jean Lesage International	15	11,366	14	14	70	13	557
Regina International	35	5,192	26	11	56	26	291
Saskatoon/John G Diefenbaker International	21	9,324	24	14	69	22	468
Sault Ste. Marie	32	5,901	3	21	82	8	376
St. John's International	39	3,351	2	14	24	19	140
St-Jean	36	4,001	29	17	53	23	370
Sudbury	40	2,901	21	12	41	25	165
Thunder Bay	28	6,747	28	15	76	28	532
Toronto/Buttonville Municipal	5	18,258	29	14	123	18	899
Toronto/City Centre	22	9,042	6	16	71	6	470
Toronto/Lester B Pearson International	1	36,474	23	18	113	7	1,335
Vancouver Harbour	31	6,231	7	16	36	7	296
Vancouver International	2	28,630	6	12	89	7	1,089
Victoria International	7	16,240	22	13	83	19	734
Whitehorse International	42	2,153	14	11	29	18	111
Windsor	37	3,752	20	18	56	20	239
Winnipeg/James Armstrong Richardson International	13	12,052	6	14	63	6	543
Winnipeg/St. Andrews	20	9,488	28	10	90	26	613
Yellowknife	34	5,293	6	10	39	5	261

**Table 8-2**  
**Total aircraft movements, peak hour and peak day — NAV CANADA flight service stations**

	Rank of movements	Number of movements	Peak hour occurrence			Peak day occurrence	
			Day in month	Hour in day	Number of movements	Day in month	Number of movements
Brandon Municipal	21	2,227	30	17	45	22	237
Campbell River	13	3,076	20	10	47	20	235
Castlegar	20	2,347	12	9	85	13	211
Charlottetown	8	3,198	6	12	33	6	220
Churchill	48	739	7	11	8	7	41
Cranbrook	43	992	2	11	19	4	71
Deer Lake	30	1,559	15	15	14	18	72
Fort McMurray	1	7,687	2	14	53	13	398
Fort Nelson	31	1,558	15	12	14	20	102
Fort St John	15	2,884	12	8	46	13	189
Fredericton International	5	4,014	8	9	39	14	263
Grande Prairie	10	3,157	5	10	30	19	181
High Level	47	753	5	9	8	5	46
Îles-de-la-Madeleine	52	366	20	6	4	3	18
Inuvik/Mike Zubko	23	2,211	16	14	55	10	137
Iqaluit	26	1,966	24	19	25	19	125
Kamloops	14	3,051	26	16	47	9	204
Kenora	44	893	16	18	16	16	57
Kingston	7	3,313	13	18	42	8	288
Kuujuuaq	39	1,210	20	13	18	20	93
Kuujuuarapik	51	547	6	13	7	24	34
La Grande Rivière	46	773	26	13	10	27	44
La Ronge	36	1,346	27	15	19	27	87
Lethbridge	19	2,501	29	11	34	10	143
Lloydminster	33	1,438	16	18	24	21	94
Medicine Hat	32	1,525	28	17	31	28	178
Mont-Joli	42	1,058	2	13	43	2	249
Nanaimo	9	3,191	22	14	43	22	233
Norman Wells	28	1,689	25	21	41	25	96
North Bay	3	4,453	6	10	55	23	309
Ottawa/Gatineau	12	3,114	1	14	61	1	324
Peace River	45	859	3	19	17	12	62
Penticton	11	3,144	11	14	50	12	198
Port Hardy	38	1,285	8	15	14	6	90
Prince Albert	27	1,961	28	13	45	28	158
Prince Rupert	50	548	12	11	20	12	108
Rankin Inlet	34	1,387	5	15	14	17	75
Red Deer Regional	6	3,684	18	18	57	30	263
Rouyn-Noranda	41	1,081	4	19	18	4	80
Saint John	25	1,985	12	15	23	18	147
Sept-Îles	22	2,222	17	17	41	17	110
Sioux Lookout	18	2,520	14	20	34	14	139
Smithers	35	1,386	15	16	20	16	88
St Anthony	53	277	27	15	11	27	20
St Catharines	2	5,481	23	13	66	23	528
Terrace	29	1,583	5	16	29	19	98
Thompson	16	2,764	20	9	17	4	136
Timmins	24	2,194	5	10	38	5	177
Val-D'or	37	1,290	17	16	24	10	81
Victoria Harbour	4	4,189	14	17	29	14	216
Wabush	49	706	12	11	10	14	48
Whitecourt	17	2,562	14	10	46	17	236
Williams Lake	40	1,129	23	16	24	10	71

**Table 9-1**  
**Itinerant aircraft movements, peak hour and peak day — NAV CANADA towers**

	Rank of movements	Number of movements	Peak hour occurrence			Peak day occurrence	
			Day in month	Hour in day	Number of movements	Day in month	Number of movements
Abbotsford	18	5,792	14	13	39	19	294
Boundary Bay	13	6,849	17	15	50	19	389
Calgary International	3	20,912	13	18	70	5	848
Calgary/Springbank	14	6,299	8	11	50	9	319
Chicoutimi/St-Honoré	33	3,105	27	11	29	17	205
Edmonton City Centre	17	6,064	10	17	33	13	301
Edmonton International	7	10,024	14	18	39	5	423
Edmonton/Villeneuve	42	1,416	1	9	26	15	83
Gander International	31	3,234	15	12	27	15	185
Halifax/Robert L Stanfield International	11	7,082	6	18	27	6	285
Hamilton	26	4,113	16	13	21	20	186
Kelowna	25	4,323	6	17	22	13	189
Kitchener/Waterloo	22	5,079	29	11	35	13	253
Langley	30	3,418	23	11	40	23	219
London	19	5,772	29	11	32	16	265
Moncton/Greater Moncton International	15	6,295	19	14	30	14	340
Montréal/Mirabel International	40	1,664	10	11	15	5	100
Montréal/Pierre Elliott Trudeau International	4	19,701	18	18	75	28	745
Montréal/St-Hubert	12	7,022	19	15	41	19	365
Oshawa	35	2,808	29	11	22	29	163
Ottawa/Macdonald-Cartier International	6	10,600	6	14	53	19	453
Pitt Meadows	28	3,625	23	15	51	23	275
Prince George	38	2,443	14	16	17	6	112
Québec/Jean Lesage International	10	8,442	21	15	39	19	372
Regina International	27	3,693	18	18	22	15	160
Saskatoon/John G Diefenbaker International	20	5,467	30	14	29	25	244
Sault Ste. Marie	36	2,601	29	15	26	29	208
St. John's International	32	3,219	22	16	20	22	132
St-Jean	34	2,941	23	15	40	23	320
Sudbury	37	2,542	18	17	18	24	118
Thunder Bay	21	5,156	28	15	32	28	244
Toronto/Buttonville Municipal	8	9,128	29	14	71	20	469
Toronto/City Centre	23	4,990	3	11	35	20	253
Toronto/Lester B Pearson International	1	36,474	23	18	113	7	1,335
Vancouver Harbour	16	6,229	7	16	36	7	296
Vancouver International	2	28,624	6	12	89	7	1,089
Victoria International	9	8,708	12	15	47	9	399
Whitehorse International	41	1,612	29	13	13	6	79
Windsor	39	2,104	29	13	14	29	105
Winnipeg/James Armstrong Richardson International	5	11,080	6	14	43	19	472
Winnipeg/St. Andrews	29	3,422	22	11	27	22	202
Yellowknife	24	4,543	5	10	23	19	205

**Table 9-2**  
**Itinerant aircraft movements, peak hour and peak day — NAV CANADA flight service stations**

	Rank of movements	Number of movements	Peak hour occurrence			Peak day occurrence	
			Day in month	Hour in day	Number of movements	Day in month	Number of movements
Brandon Municipal	24	1,543	30	14	37	22	199
Campbell River	13	2,106	8	14	18	9	134
Castlegar	37	1,121	12	9	11	1	70
Charlottetown	17	1,946	14	22	14	14	118
Churchill	48	737	7	11	8	7	39
Cranbrook	42	898	3	13	7	3	44
Deer Lake	26	1,531	7	18	12	6	68
Fort McMurray	1	6,215	26	18	45	13	310
Fort Nelson	28	1,512	13	8	13	20	100
Fort St John	10	2,266	26	9	19	13	115
Fredericton International	6	2,376	2	13	32	14	137
Grande Prairie	5	2,401	5	14	15	19	131
High Level	47	749	5	9	8	5	46
Îles-de-la-Madeleine	52	366	20	6	4	3	18
Inuvik/Mike Zubko	19	1,865	28	14	16	11	97
Iqaluit	20	1,840	10	14	14	19	93
Kamloops	16	2,051	9	9	19	9	146
Kenora	43	857	12	13	8	14	47
Kingston	9	2,319	8	11	38	8	282
Kuujuuaq	35	1,146	10	11	9	20	53
Kuujuuarapik	50	547	6	13	7	24	34
La Grande Rivière	46	773	26	13	10	27	44
La Ronge	33	1,262	19	10	12	19	81
Lethbridge	21	1,765	8	9	18	8	121
Lloydminster	41	914	8	11	12	5	48
Medicine Hat	34	1,161	24	21	20	24	84
Mont-Joli	45	778	2	13	21	2	127
Nanaimo	11	2,261	10	12	19	19	118
Norman Wells	27	1,521	29	13	12	18	74
North Bay	12	2,139	15	10	37	15	123
Ottawa/Gatineau	22	1,718	1	14	33	1	208
Peace River	44	807	13	11	12	12	62
Penticton	18	1,874	26	16	18	12	102
Port Hardy	32	1,283	2	11	13	6	90
Prince Albert	25	1,537	27	14	13	27	78
Prince Rupert	51	526	12	11	20	12	108
Rankin Inlet	30	1,387	5	15	14	17	75
Red Deer Regional	8	2,328	30	11	39	30	233
Rouyn-Noranda	40	957	13	17	10	4	60
Saint John	23	1,689	16	16	13	18	89
Sept-Îles	14	2,072	18	11	14	14	97
Sioux Lookout	7	2,358	7	11	15	4	127
Smithers	31	1,354	16	12	19	16	88
St Anthony	53	269	26	12	5	30	19
St Catharines	3	3,865	23	12	53	23	378
Terrace	29	1,461	19	16	13	14	89
Thompson	4	2,670	20	9	17	4	126
Timmins	15	2,064	5	10	14	5	117
Val-D'or	36	1,134	10	19	17	10	69
Victoria Harbour	2	4,189	14	17	29	14	216
Wabush	49	706	12	11	10	14	48
Whitecourt	38	1,094	7	11	15	27	56
Williams Lake	39	995	9	15	11	11	58

**Table 10-1**  
**Local movements, peak hour and peak day — NAV CANADA towers**

	Rank of movements	Number of movements	Peak hour occurrence			Peak day occurrence	
			Day in month	Hour in day	Number of movements	Day in month	Number of movements
Abbotsford	4	8,837	1	20	142	28	494
Boundary Bay	2	9,474	15	13	90	7	548
Calgary International	37	290	9	14	12	22	64
Calgary/Springbank	5	8,737	10	13	64	10	418
Chicoutimi/St-Honoré	1	10,278	11	9	148	10	1,038
Edmonton City Centre	26	1,586	13	7	56	13	156
Edmonton International	35	472	15	14	24	15	68
Edmonton/Villeneuve	13	5,188	22	15	62	15	392
Gander International	15	4,152	30	11	50	21	374
Halifax/Robert L Stanfield International	31	797	25	14	20	4	78
Hamilton	23	2,448	22	9	42	16	168
Kelowna	21	2,731	17	21	44	17	253
Kitchener/Waterloo	10	6,054	18	13	64	18	394
Langley	12	5,508	17	16	64	17	356
London	18	3,776	21	11	62	20	270
Moncton/Greater Moncton International	11	5,750	25	12	48	16	344
Montréal/Mirabel International	33	600	10	14	62	10	175
Montréal/Pierre Elliott Trudeau International	0	0	0	0	0	0	0
Montréal/St-Hubert	6	8,236	6	12	88	5	532
Oshawa	22	2,720	5	21	52	6	212
Ottawa/Macdonald-Cartier International	14	4,511	26	17	36	19	262
Pitt Meadows	8	6,706	8	11	102	15	494
Prince George	29	1,060	22	13	28	22	154
Québec/Jean Lesage International	20	2,924	13	20	44	13	194
Regina International	27	1,499	26	11	46	26	142
Saskatoon/John G Diefenbaker International	17	3,857	23	8	48	22	252
Sault Ste. Marie	19	3,300	3	21	76	8	260
St. John's International	38	132	2	14	20	19	28
St-Jean	28	1,060	28	13	40	25	106
Sudbury	36	359	21	12	28	25	64
Thunder Bay	25	1,591	28	10	54	28	288
Toronto/Buttonville Municipal	3	9,130	18	11	72	27	494
Toronto/City Centre	16	4,052	24	18	54	6	234
Toronto/Lester B Pearson International	0	0	0	0	0	0	0
Vancouver Harbour	40	2	1	11	2	1	2
Vancouver International	39	6	17	7	6	17	6
Victoria International	7	7,532	11	20	50	27	394
Whitehorse International	34	541	14	11	24	29	46
Windsor	24	1,648	20	18	46	20	140
Winnipeg/James Armstrong Richardson International	30	972	22	11	26	22	98
Winnipeg/St. Andrews	9	6,066	25	16	72	26	420
Yellowknife	32	750	13	12	20	5	60

**Table 10-2**  
**Local movements, peak hour and peak day — NAV CANADA flight service stations**

	Rank of movements	Number of movements	Peak hour occurrence			Peak day occurrence	
			Day in month	Hour in day	Number of movements	Day in month	Number of movements
Brandon Municipal	17	684	14	17	34	14	146
Campbell River	13	970	20	10	38	20	158
Castlegar	10	1,226	12	9	74	13	168
Charlottetown	9	1,252	25	15	28	6	120
Churchill	47	2	7	9	2	7	2
Cranbrook	35	94	2	11	16	4	38
Deer Lake	42	28	15	14	6	15	20
Fort McMurray	4	1,472	2	14	36	2	122
Fort Nelson	39	46	15	12	8	15	20
Fort St John	18	618	9	18	36	9	98
Fredericton International	2	1,638	8	9	32	17	152
Grande Prairie	15	756	14	12	18	14	70
High Level	45	4	12	16	2	12	2
Îles-de-la-Madeleine	0	0	0	0	0	0	0
Inuvik/Mike Zubko	22	346	16	14	48	10	56
Iqaluit	31	126	24	19	22	19	32
Kamloops	11	1,000	26	16	40	15	118
Kenora	40	36	16	18	12	10	14
Kingston	12	994	13	18	36	13	136
Kuujuaq	37	64	20	14	12	20	40
Kuujuarapik	0	0	0	0	0	0	0
La Grande Rivière	0	0	0	0	0	0	0
La Ronge	36	84	27	15	12	27	16
Lethbridge	16	736	29	11	26	10	78
Lloydminster	19	524	16	18	20	21	60
Medicine Hat	21	364	28	17	24	28	108
Mont-Joli	24	280	2	13	22	2	122
Nanaimo	14	930	22	10	32	22	146
Norman Wells	25	168	25	21	36	25	46
North Bay	1	2,314	6	10	44	23	222
Ottawa/Gatineau	6	1,396	1	13	34	13	130
Peace River	38	52	3	19	16	3	24
Penticton	8	1,270	11	14	42	11	120
Port Hardy	46	2	8	15	2	8	2
Prince Albert	20	424	28	13	42	28	86
Prince Rupert	43	22	8	10	6	8	14
Rankin Inlet	0	0	0	0	0	0	0
Red Deer Regional	7	1,356	18	18	48	13	122
Rouyn-Noranda	32	124	4	19	14	18	28
Saint John	23	296	12	15	18	18	58
Sept-Îles	28	150	17	17	32	17	38
Sioux Lookout	26	162	14	20	30	11	32
Smithers	41	32	17	21	10	17	18
St Anthony	44	8	27	15	8	27	8
St Catharines	3	1,616	13	14	50	10	154
Terrace	33	122	5	16	24	19	28
Thompson	34	94	28	21	12	23	20
Timmins	30	130	5	10	24	5	60
Val-D'or	27	156	17	16	20	17	32
Victoria Harbour	0	0	0	0	0	0	0
Wabush	0	0	0	0	0	0	0
Whitecourt	5	1,468	17	12	44	17	194
Williams Lake	29	134	23	16	20	15	24

**Table 11-1**  
**Local movements - civil, peak hour and peak day — NAV CANADA towers**

	Rank of movements	Number of movements	Peak hour occurrence			Peak day occurrence	
			Day in month	Hour in day	Number of movements	Day in month	Number of movements
Abbotsford	4	8,837	1	20	142	28	494
Boundary Bay	2	9,474	15	13	90	7	548
Calgary International	37	283	9	14	12	22	64
Calgary/Springbank	5	8,737	10	13	64	10	418
Chicoutimi/St-Honoré	1	10,278	11	9	148	10	1,038
Edmonton City Centre	25	1,556	13	7	56	13	156
Edmonton International	35	422	13	11	12	20	40
Edmonton/Villeneuve	13	5,188	22	15	62	15	392
Gander International	16	3,926	30	11	50	21	358
Halifax/Robert L Stanfield International	32	588	5	12	14	5	62
Hamilton	23	2,436	22	9	42	16	168
Kelowna	21	2,725	17	21	44	17	253
Kitchener/Waterloo	10	6,042	18	13	64	18	394
Langley	12	5,506	17	16	64	17	356
London	18	3,776	21	11	62	20	270
Moncton/Greater Moncton International	11	5,744	25	12	48	16	344
Montréal/Mirabel International	33	588	10	14	62	10	175
Montréal/Pierre Elliott Trudeau International	0	0	0	0	0	0	0
Montréal/St-Hubert	6	8,234	6	12	88	5	532
Oshawa	22	2,720	5	21	52	6	212
Ottawa/Macdonald-Cartier International	14	4,448	30	13	36	19	262
Pitt Meadows	8	6,706	8	11	102	15	494
Prince George	28	1,060	22	13	28	22	154
Québec/Jean Lesage International	20	2,924	13	20	44	13	194
Regina International	27	1,428	26	11	46	26	140
Saskatoon/John G Diefenbaker International	17	3,817	23	8	48	22	248
Sault Ste. Marie	19	3,286	3	21	76	8	260
St. John's International	38	112	19	20	14	19	28
St-Jean	29	1,060	28	13	40	25	106
Sudbury	36	357	21	12	28	25	64
Thunder Bay	26	1,541	28	10	54	28	268
Toronto/Buttonville Municipal	3	9,112	18	11	72	27	494
Toronto/City Centre	15	4,052	24	18	54	6	234
Toronto/Lester B Pearson International	0	0	0	0	0	0	0
Vancouver Harbour	40	2	1	11	2	1	2
Vancouver International	39	6	17	7	6	17	6
Victoria International	7	7,326	15	14	50	27	394
Whitehorse International	34	535	14	11	24	29	46
Windsor	24	1,648	20	18	46	20	140
Winnipeg/James Armstrong Richardson International	30	788	22	11	26	22	98
Winnipeg/St. Andrews	9	6,066	25	16	72	26	420
Yellowknife	31	618	13	12	20	20	50

**Table 11-2**  
**Local movements - civil, peak hour and peak day — NAV CANADA flight service stations**

	Rank of movements	Number of movements	Peak hour occurrence			Peak day occurrence	
			Day in month	Hour in day	Number of movements	Day in month	Number of movements
Brandon Municipal	16	624	14	17	34	14	146
Campbell River	13	970	20	10	38	20	158
Castlegar	9	1,226	12	9	74	13	168
Charlottetown	10	1,222	25	15	28	6	120
Churchill	46	2	7	9	2	7	2
Cranbrook	36	82	2	11	16	4	26
Deer Lake	41	28	15	14	6	15	20
Fort McMurray	4	1,472	2	14	36	2	122
Fort Nelson	39	46	15	12	8	15	20
Fort St John	17	618	9	18	36	9	98
Fredericton International	2	1,625	8	9	32	7	148
Grande Prairie	14	756	14	12	18	14	70
High Level	45	4	12	16	2	12	2
Îles-de-la-Madeleine	0	0	0	0	0	0	0
Inuvik/Mike Zubko	33	106	6	18	26	6	40
Iqaluit	30	126	24	19	22	19	32
Kamloops	11	988	26	16	40	15	118
Kenora	42	22	16	18	12	16	12
Kingston	12	974	13	18	36	13	136
Kuujuaq	37	64	20	14	12	20	40
Kuujuarapik	0	0	0	0	0	0	0
La Grande Rivière	0	0	0	0	0	0	0
La Ronge	35	84	27	15	12	27	16
Lethbridge	15	736	29	11	26	10	78
Lloydminster	18	524	16	18	20	21	60
Medicine Hat	21	360	28	17	24	28	108
Mont-Joli	23	280	2	13	22	2	122
Nanaimo	19	480	11	16	18	10	48
Norman Wells	24	168	25	21	36	25	46
North Bay	1	2,314	6	10	44	23	222
Ottawa/Gatineau	6	1,396	1	13	34	13	130
Peace River	38	52	3	19	16	3	24
Penticton	8	1,252	11	14	42	11	120
Port Hardy	47	2	8	15	2	8	2
Prince Albert	20	424	28	13	42	28	86
Prince Rupert	43	22	8	10	6	8	14
Rankin Inlet	0	0	0	0	0	0	0
Red Deer Regional	7	1,356	18	18	48	13	122
Rouyn-Noranda	31	124	4	19	14	18	28
Saint John	22	296	12	15	18	18	58
Sept-Îles	27	150	17	17	32	17	38
Sioux Lookout	25	162	14	20	30	11	32
Smithers	40	32	17	21	10	17	18
St Anthony	44	8	27	15	8	27	8
St Catharines	3	1,616	13	14	50	10	154
Terrace	32	122	5	16	24	19	28
Thompson	34	94	28	21	12	23	20
Timmins	29	130	5	10	24	5	60
Val-D'or	26	156	17	16	20	17	32
Victoria Harbour	0	0	0	0	0	0	0
Wabush	0	0	0	0	0	0	0
Whitecourt	5	1,468	17	12	44	17	194
Williams Lake	28	134	23	16	20	15	24



**Table 12-1**  
**Local movements - military, peak hour and peak day — NAV CANADA towers**

	Rank of movements	Number of movements	Peak hour occurrence			Peak day occurrence	
			Day in month	Hour in day	Number of movements	Day in month	Number of movements
Abbotsford	0	0	0	0	0	0	0
Boundary Bay	0	0	0	0	0	0	0
Calgary International	18	7	6	15	2	19	4
Calgary/Springbank	0	0	0	0	0	0	0
Chicoutimi/St-Honoré	0	0	0	0	0	0	0
Edmonton City Centre	11	30	25	14	6	25	12
Edmonton International	8	50	15	14	12	15	32
Edmonton/Villeneuve	0	0	0	0	0	0	0
Gander International	1	226	15	11	16	15	58
Halifax/Robert L Stanfield International	2	209	25	14	20	13	44
Hamilton	15	12	4	9	12	4	12
Kelowna	20	6	3	16	2	3	6
Kitchener/Waterloo	17	12	13	20	6	13	8
Langley	24	2	26	10	2	26	2
London	0	0	0	0	0	0	0
Moncton/Greater Moncton International	19	6	12	15	2	12	2
Montréal/Mirabel International	16	12	7	11	6	7	6
Montréal/Pierre Elliott Trudeau International	0	0	0	0	0	0	0
Montréal/St-Hubert	23	2	24	15	2	24	2
Oshawa	0	0	0	0	0	0	0
Ottawa/Macdonald-Cartier International	7	63	26	17	8	26	16
Pitt Meadows	0	0	0	0	0	0	0
Prince George	0	0	0	0	0	0	0
Québec/Jean Lesage International	0	0	0	0	0	0	0
Regina International	6	71	2	14	8	15	12
Saskatoon/John G Diefenbaker International	10	40	26	16	6	26	10
Sault Ste. Marie	14	14	9	13	6	9	10
St. John's International	12	20	2	14	20	2	20
St-Jean	0	0	0	0	0	0	0
Sudbury	22	2	3	16	2	3	2
Thunder Bay	9	50	28	13	10	28	20
Toronto/Buttonville Municipal	13	18	4	12	18	4	18
Toronto/City Centre	0	0	0	0	0	0	0
Toronto/Lester B Pearson International	0	0	0	0	0	0	0
Vancouver Harbour	0	0	0	0	0	0	0
Vancouver International	0	0	0	0	0	0	0
Victoria International	3	206	11	21	20	11	70
Whitehorse International	21	6	5	14	6	5	6
Windsor	0	0	0	0	0	0	0
Winnipeg/James Armstrong Richardson International	4	184	5	10	18	5	54
Winnipeg/St. Andrews	0	0	0	0	0	0	0
Yellowknife	5	132	5	14	16	5	28

**Table 12-2**  
**Local movements - military, peak hour and peak day — NAV CANADA flight service stations**

	Rank of movements	Number of movements	Peak hour occurrence			Peak day occurrence	
			Day in month	Hour in day	Number of movements	Day in month	Number of movements
Brandon Municipal	3	60	25	15	16	12	22
Campbell River	0	0	0	0	0	0	0
Castlegar	0	0	0	0	0	0	0
Charlottetown	4	30	16	12	19	16	30
Churchill	0	0	0	0	0	0	0
Cranbrook	9	12	4	13	6	4	12
Deer Lake	0	0	0	0	0	0	0
Fort McMurray	0	0	0	0	0	0	0
Fort Nelson	0	0	0	0	0	0	0
Fort St John	0	0	0	0	0	0	0
Fredericton International	8	13	17	17	8	17	11
Grande Prairie	0	0	0	0	0	0	0
High Level	0	0	0	0	0	0	0
Îles-de-la-Madeleine	0	0	0	0	0	0	0
Inuvik/Mike Zubko	2	240	16	14	48	10	56
Iqaluit	0	0	0	0	0	0	0
Kamloops	10	12	12	16	12	12	12
Kenora	7	14	10	11	10	10	14
Kingston	5	20	24	13	10	24	14
Kuujuaq	0	0	0	0	0	0	0
Kuujuarapik	0	0	0	0	0	0	0
La Grande Rivière	0	0	0	0	0	0	0
La Ronge	0	0	0	0	0	0	0
Lethbridge	0	0	0	0	0	0	0
Lloydminster	0	0	0	0	0	0	0
Medicine Hat	11	4	29	11	4	29	4
Mont-Joli	0	0	0	0	0	0	0
Nanaimo	1	450	22	10	24	22	124
Norman Wells	0	0	0	0	0	0	0
North Bay	0	0	0	0	0	0	0
Ottawa/Gatineau	0	0	0	0	0	0	0
Peace River	0	0	0	0	0	0	0
Penticton	6	18	6	10	16	6	18
Port Hardy	0	0	0	0	0	0	0
Prince Albert	0	0	0	0	0	0	0
Prince Rupert	0	0	0	0	0	0	0
Rankin Inlet	0	0	0	0	0	0	0
Red Deer Regional	0	0	0	0	0	0	0
Rouyn-Noranda	0	0	0	0	0	0	0
Saint John	0	0	0	0	0	0	0
Sept-Îles	0	0	0	0	0	0	0
Sioux Lookout	0	0	0	0	0	0	0
Smithers	0	0	0	0	0	0	0
St Anthony	0	0	0	0	0	0	0
St Catharines	0	0	0	0	0	0	0
Terrace	0	0	0	0	0	0	0
Thompson	0	0	0	0	0	0	0
Timmins	0	0	0	0	0	0	0
Val-D'or	0	0	0	0	0	0	0
Victoria Harbour	0	0	0	0	0	0	0
Wabush	0	0	0	0	0	0	0
Whitecourt	0	0	0	0	0	0	0
Williams Lake	0	0	0	0	0	0	0

# Methodology

---

## Survey universe

### Coverage

The survey covers all aircraft movements at Canadian airports with NAV CANADA air traffic control towers and flight service stations.

## Methodology survey

The Itinerant movement record is designed to capture:

- Aircraft identification
- Aircraft type
- The last station before landing at the reporting airport or the next station after take-off
- Arrival or departure
- Time of movement
- Runway used
- Flight rules (Instrument flight rules or Visual flight rules).

The Local aircraft movement record provides for reports of local movements by:

- Hour
- Single engine aircraft
- Multi-engine aircraft
- Jet aircraft
- Military aircraft
- Date of movement

Processing of aircraft movement statistics involves several stages. Preliminary monthly data by class of operation are released in **Preliminary aircraft movement statistics**, catalogue no. 51F0001P (TP-1496 (NAV CANADA towered airports only)). Data which follow in **Aircraft movement statistics - Monthly** report, catalogue nos. 51-007-X and 51-008-X (TP-141) may contain revisions to the originally released figures. Annual tables, which may reflect further revisions, are released in the publication, **Aircraft movement statistics - Annual** report - TP-577. In particular, data on itinerant movements by type of operation may reflect revisions as various sources of comparative information (data collected from commercial air carriers by the Aviation Statistics Centre, Statistics Canada) become available during the processing cycle. Finally, when revisions are required after the release of TP-577, they are contained in the five year historical summary of subsequent editions of TP-577. These revisions are also reflected in the CANSIM tables, both monthly and annual.

The records are completed daily, based on a twenty-four hour clock running from zero hour to 23:59. The times recorded are Coordinated Universal Time (UTC); however, published statistics are shown in local times. The records are transmitted to the Aviation Statistics Centre.

The Aviation Statistics Centre maintains a data base of parameter files of current information on all registered aircraft. The storage of this information reduces the reporting burden of the survey respondents and limits the element of human error associated with the preparation of source documents.

Other parameter files information includes registered aircraft identifications and their corresponding aircraft types, gross take-off weights, types of power plant (piston, jet or turboprop); whether the aircraft are fixed wing, helicopters or gliders. This information also provides a basis for identifying type of flights (commercial, private and government) and the geographical area in which the flights take place.

The parameter files also include airport environment information against which the airport category is checked; the reported runway is validated and the time difference between UTC and Local is assigned.

## Data quality and limitations

---

Aircraft movement statistics are accumulated from data originating with air traffic control tower units or flight service station personnel. Because staff in these positions are highly trained in factual observation and reporting, the entries in the data bank are of a high quality.

The procedures for reporting aircraft movements on the Daily air traffic records by tower units are described in the NAV CANADA Air traffic control manual of operations (TP 703) Volume 1, Para. 1023 to 1023.5. Definitions for terms used in these paragraphs can be found in the appendix I "Glossary of terms" of this report.

To maintain uniformity in the reporting of source data, ASC issues to air traffic control units an "Air traffic designators" handbook (TP 143) listing the official Transport Canada aircraft type designators and the designators of various domestic and international air carriers. This handbook and another titled "Canada flight supplement" listing various airport codes serve as references to help ensure the reporting of the proper aircraft identity and the point of origin and destination of flights.

The processing system contains editing procedures designed to identify data errors occurring during transcription or during data capture of forms. Identified errors are manually corrected by ASC editing staff.

Errors may occur if an aircraft type code which exists is reported or data captured in error for a flight. For example, the reporting or keying of B727 for a flight actually performed by a B737 may not be detected during the system editing. That the aircraft type information is recorded by highly trained air traffic control tower staff using a common handbook of official aircraft codes will minimize this problem.

Similarly, the breakdown of the data on a geographic basis by use of location codes can be subject to error. For smaller locations, alphanumeric location codes are often used and the sequence of numbers and letters determines the geographic area to which the data are assigned. In some cases, where a sequence error has been introduced into the system either at the reporting unit or at data capture, a domestic movement may be classified as transborder or vice versa. The use of common manuals of location identifiers works to minimize this occurrence.

### Factors influencing the data

Harmony Airways ceased its operations on April 9, 2007.

Icelandair began regular service from Halifax, Nova Scotia to Iceland on May 17, 2007.

# Appendix I

---

## Glossary of terms

### Air carrier

Aircraft operators licensed by the Canadian Transportation Agency to transport persons, mail and/or goods by air.

**Levels I to III air carriers (Defn 2000)** – This includes every Canadian air carrier that, in each of the two calendar years immediately preceding the report year, realized annual gross revenues of \$1,000,000 or more for the air services for which the air carrier held a licence. Also includes foreign air carriers.

**Levels IV to VI air carriers (Defn 2000)** – Canadian air carriers not classified in report level I-III that, in each of the two calendar years immediately preceding the report year, realized annual gross revenues of less than \$1,000,000 for the air services for which the air carrier held a licence. Since 2000, levels IV and VI are no longer applicable.

### Aircraft movement

A take off, a landing, or a simulated approach by an aircraft. ATC Manops amendment 8-8-83. NC-703.

### Class of operation

Aircraft movements are classified as either “Itinerant” or “Local”.

### Commercial

Flights by aircraft operators licensed by the Canadian Transportation Agency to perform commercial air services. Commercial operations are divided into two categories: **Air carrier** and **Other commercial**.

### Domestic itinerant movements

Movements, at a Canadian airport, of aircraft departing to or arriving from another point in Canada.

### FSS

Flight service station.

### Government – Civil

Aircraft owned by federal, provincial and municipal bodies as well as foreign states, but excluding those owned by crown corporations, boards and commissions. Such aircraft are coded “3” under “Purpose” in the Canadian civil aircraft register.

### Government – Military

Aircraft of any branch of the armed forces of any nation.

### Gross take-off weight

The maximum weight for which the aircraft is licensed to operate. For operational purposes, all weights are rounded upwards to the next 1,000 kilograms. Thus 3,200 kilograms becomes 4,000 kilograms.

### I.F.R. flight

A flight conducted in accordance with Instrument flight rules.

### International movements

Movements, at a Canadian airport, of aircraft arriving from or departing to a point outside Canada. International movements are subclassified into “transborder” (to or from a point in the United States including Alaska but excluding Hawaii), and “other international” (to or from points in countries other than Canada and the United States).

Since aircraft movements are reported on the basis of place “arrived from” or “departed to”, an arrival at Mirabel airport from London, England would appear under “other international”. If the same aircraft moved on to Toronto, both the departure at Mirabel and the arrival at Toronto would be shown as “domestic”.

### Itinerant movements

At Airports **with** control towers and/or Flight service stations: for the purpose of completing air traffic records, itinerant movements are considered as movements in which aircraft proceed to or arrive from another location; or where aircraft leave the circuit but return without landing at another airport. At Airports **without** control towers: an aircraft movement in which the aircraft arrives from or departs to a point other than the reporting airport; or a movement by an aircraft that leaves the close proximity of an airport and returns without landing at another airport.

### Local movements

At Airports **with** control towers and/or Flight service stations: for the purpose of completing air traffic records, local movements are considered as movements in which the aircraft remains in the circuit. At Airports **without** control towers: an aircraft movement in which the aircraft remains in the close proximity of the airport. Local movements are often carried out during training flights (touch-and-go), equipment tests etc.

### Other commercial

Flights performed by **Commercial** aircraft operators not included in the **Air carrier** categories. Flying schools, agricultural sprayers, water-bombers, aerial photography and survey, etc.

### Power plant

The source of propulsion. For example, piston engines, turbo-propellers and jet engines. “Helicopters”, in this report, include both piston and turboshaft-driven engines.

### Private aircraft

Aircraft used solely for private purposes, not for hire and compensation, which are classified as “Private” or “Private Restricted” in the Canadian civil aircraft register or similar registries of other countries. Owners include individuals, groups and business firms.

### **Runway 88**

Through control zone flights, i.e. flights which communicate with the tower while transiting the tower control zone to another destination without landing at the reporting airport.

Data for these runways are not included in the grand total.

### **Simulated approaches**

Movements that are either missed instrument or practice instrument approaches without landing.

### **TC**

Transport Canada

### **Tower control zone**

A controlled airspace within the proximity of an air traffic control tower, usually within a radius of less than 24 kilometres of the tower.

### **V.F.R. flight**

A flight conducted in accordance with Visual flight rules.

### **Weight group**

The classification of weight classes in groups for statistical purposes.