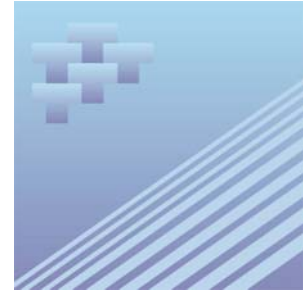




Catalogue no. 51-007-X

# **Aircraft Movement Statistics: NAV CANADA Towers and Flight Service Stations**



November 2007



Statistics  
Canada

Statistique  
Canada

Canada

## How to obtain more information

For information about this product or the wide range of services and data available from Statistics Canada, visit our website at [www.statcan.ca](http://www.statcan.ca) or contact us by e-mail at [infostats@statcan.ca](mailto:infostats@statcan.ca) or by phone from 8:30am to 4:30pm Monday to Friday at:

### **Toll-free telephone (Canada and the United States):**

Inquiries line **1-800-263-1136**

National telecommunications device for the hearing impaired **1-800-363-7629**

Fax line **1-877-287-4369**

Depository Services Program inquiries line **1-800-635-7943**

Depository Services Program fax line **1-800-565-7757**

### **Statistics Canada national contact centre: 1-613-951-8116**

Fax line **1-613-951-0581**

## Information to access the product

This product, catalogue no. 51-007-X, is available for free in electronic format. To obtain a single issue, visit our website at [www.statcan.ca](http://www.statcan.ca) and select Publications.

## Standards of service to the public

Statistics Canada is committed to serving its clients in a prompt, reliable and courteous manner. To this end, the Agency has developed *standards of service* which its employees observe in serving its clients.

To obtain a copy of these service standards, please contact Statistics Canada toll free at 1-800-263-1136. The service standards are also published on [www.statcan.ca](http://www.statcan.ca) under About us > Providing services to Canadians.



Statistics Canada  
Transportation Division

# Aircraft Movement Statistics: NAV CANADA Towers and Flight Service Stations

November 2007

Published by authority of the Minister responsible for Statistics Canada © Minister of Industry, 2007 and the © Minister of Transport, 2007. All rights reserved. The content of this electronic publication may be reproduced, in whole or in part, and by any means, without further permission from Statistics Canada, subject to the following conditions: that it be done solely for the purposes of private study, research, criticism, review or newspaper summary, and/or for non-commercial purposes; and that Statistics Canada be fully acknowledged as follows: Source (or "Adapted from", if appropriate): Statistics Canada, year of publication, name of product, catalogue number, volume and issue numbers, reference period and page(s). Otherwise, no part of this publication may be reproduced, stored in a retrieval system or transmitted in any form, by any means—electronic, mechanical or photocopy—or for any purposes without prior written permission of Licensing Services, Client Services Division, Statistics Canada, Ottawa, Ontario, Canada K1A 0T6.

December 2007

Catalogue no. 51-007-X, vol. 1, no. 11

ISSN 1911-6314

Frequency: Monthly

Ottawa

La version française de cette publication est disponible sur demande (n° 51-007-X au catalogue).

---

#### **Note of appreciation**

*Canada owes the success of its statistical system to a long standing partnership between Statistics Canada, the citizens of Canada, its businesses, governments and other institutions. Accurate and timely statistical information could not be produced without their continued cooperation and goodwill.*

# User information

---

## Symbols

The following standard symbols are used in Statistics Canada publications:

- . not available for any reference period
- .. not available for a specific reference period
- ... not applicable
- 0 true zero or a value rounded to zero
- 0<sup>s</sup> value rounded to 0 (zero) where there is a meaningful distinction between true zero and the value that was rounded
- p preliminary
- r revised
- x suppressed to meet the confidentiality requirements of the *Statistics Act*
- E use with caution
- F too unreliable to be published

## Acknowledgements

This publication was prepared by the Aviation Statistics Centre, of the Transportation Division, Statistics Canada under the general direction of **Gord Baldwin**, Director, Transportation Division and **Norah Hillary**, Chief, Aviation Statistics Centre. **Kathie Davidson**, **Maureen de Souza**, **John Scolli** and **Sylvie Savard** contributed to the preparation of this publication.

# Table of contents

---

<b>Highlights</b>	<b>5</b>
<b>Analysis</b>	<b>6</b>
<b>Related products</b>	<b>7</b>
<b>Statistical tables</b>	
1 Total aircraft movements by class of operation	10
1-1 NAV CANADA towers	10
1-2 NAV CANADA flight service stations	11
2 Total aircraft movements, civil and military	12
2-1 NAV CANADA towers	12
2-2 NAV CANADA flight service stations	13
3 Itinerant movements by type of operator	14
3-1 NAV CANADA towers	14
3-2 NAV CANADA flight service stations	15
4 Itinerant movements by I.F.R. (Instrument flight rules) and V.F.R. (Visual flight rules) and runway 88 movements	16
4-1 NAV CANADA towers	16
4-2 NAV CANADA flight service stations	17
5 Itinerant movements by type of power plant	18
5-1 NAV CANADA towers	18
5-2 NAV CANADA flight service stations	19
6 Itinerant movements by aircraft weight group	20
6-1 NAV CANADA towers	20
6-2 NAV CANADA flight service stations	21
7 Itinerant movements, domestic, transborder and international	22
7-1 NAV CANADA towers	22
7-2 NAV CANADA flight service stations	26

## Table of contents – continued

8	Total aircraft movements, peak hour and peak day	31
8-1	NAV CANADA towers	31
8-2	NAV CANADA flight service stations	32
9	Itinerant aircraft movements, peak hour and peak day	33
9-1	NAV CANADA towers	33
9-2	NAV CANADA flight service stations	34
10	Local movements, peak hour and peak day	35
10-1	NAV CANADA towers	35
10-2	NAV CANADA flight service stations	36
11	Local movements - civil, peak hour and peak day	37
11-1	NAV CANADA towers	37
11-2	NAV CANADA flight service stations	38
12	Local movements - military, peak hour and peak day	39
12-1	NAV CANADA towers	39
12-2	NAV CANADA flight service stations	40

## Data quality, concepts and methodology

Methodology	41
Data quality and limitations	43

## Appendix

I	Glossary of terms	44
---	-------------------	----

## Highlights

- For the eighteenth consecutive month, aircraft take-offs and landings at Canadian airports with NAV CANADA air traffic control towers and flight service stations increased in year-over-year monthly comparisons. These 95 airports reported 480,451 movements in November 2007 compared with 427,798 movements at 96 airports in November 2006, an increase of 12.3% (+52,653 movements).
- Itinerant movements (flights from one airport to another) increased by 9.3% (+27,974 movements) in November 2007 compared with the same month a year earlier.
- Local movements (flights that remain in the vicinity of the airport) increased by 19.3% (+24,679 movements) in November 2007 compared with November 2006.

**Table 1**  
**Distribution of aircraft movements at NAV CANADA Towers and Flight Service Stations**

	NAV CANADA towers		NAV CANADA Flight Service Stations		Total	
	number	Change from November 2007/ November 2006 percent	number	Change from November 2007/ November 2006 percent	number	Change from November 2007/ November 2006 percent
<b>Grand total</b>	<b>388,680</b>	<b>13.1</b>	<b>91,771</b>	<b>9.2</b>	<b>480,451</b>	<b>12.3</b>
<b>Itinerant movements</b>						
Air carriers	192,679	6.5	51,237	5.9	243,916	6.4
Other commercial movements	34,811	28.4	5,229	36.1	40,040	29.3
Private movements	26,313	17.6	7,804	21.4	34,117	18.4
Government civil movements	4,284	-12.2	1,767	7.2	6,051	-7.3
Government military movements	3,000	-10.9	908	-18.6	3,908	-12.8
Itinerant total	261,087	9.4	66,945	9.0	328,032	9.3
<b>Local movements</b>						
Civil local movements	126,515	22.0	24,681	10.1	151,196	19.9
Military local movements	1,078	-25.2	145	-9.4	1,223	-23.6
Local total	127,593	21.3	24,826	9.9	152,419	19.3

## Analysis

---

For the eighteenth consecutive month, aircraft take-offs and landings at Canadian airports with NAV CANADA air traffic control towers and flight service stations increased in year-over-year monthly comparisons. These 95 airports reported 480,451 movements in November 2007 compared with 427,798 movements at 96 airports in November 2006, an increase of 12.3% (+52,653 movements).

Itinerant movements (flights from one airport to another) increased by 9.3% (+27,974 movements) in November 2007 compared with the same month a year earlier.

Local movements (flights that remain in the vicinity of the airport) increased by 19.3% (+24,679 movements) in November 2007 compared with November 2006.

### **Airports with NAV CANADA air traffic control towers**

The 42 Canadian airports with NAV CANADA air traffic control towers reported 388,680 aircraft take-offs and landings in November, up 13.1% compared with November 2006 (343,793 movements). Year-over-year increases in aircraft movements were reported by 30 of these airports in November 2007. The variations ranged from an increase of 163.2% at Pitt Meadows, British Columbia to a decline of 46.6% at St-Jean, Quebec.

Itinerant movements (flights from one airport to another) increased by 9.4% (+22,452 movements) in November compared with the same month a year earlier. Year-over-year variations in itinerant movements ranged from a 135.8% increase (+1,862 movements) at Pitt Meadows to a decline of -37.9% (-503 movements) at St-Jean, Quebec.

Local movements (flights that remain in the vicinity of the airport) increased by 21.3% (+22,435 movements) in November compared with November 2006. Year-over-year variations in local movements ranged from a 192.6% increase (+470 movements) at Whitehorse International to a decline of 70.5% (-426 movements) at St. John's International, Newfoundland and Labrador.

### **Airports with NAV CANADA flight service stations**

The 53 Canadian airports with NAV CANADA flight service stations reported 91,771 aircraft take-offs and landings in November, up 9.2% compared with 54 flight service stations in November 2006 (84,005 movements). Year-over-year increases in aircraft movements were reported by 39 of these airports in November 2007. The variations ranged from a 148.9% increase (+2,611 movements) at Fredericton International to a decline of 35.9% (-1,102 movements) at St. Catharines, Ontario.

Itinerant movements (flights from one airport to another) increased by 9.0% (+5,522 movements) in November compared with the same month a year earlier. Year-over-year variations in itinerant movements ranged from a 61.6% increase (+882 movements) at Fredericton International to a decline of 36.0% (-480 movements) at St. Catharines.

Local movements (flights that remain in the vicinity of the airport) recorded in November 2007 increased by 9.9% (+2,244 movements) compared with the same month a year earlier. Fredericton International recorded the largest gain in local movements, increasing by 1,729 movements (+537.0%) compared with November 2006.



## Related products

---

### Selected CANSIM tables from Statistics Canada

---

401-0005	Aircraft movements by class of operation, airports with NAV CANADA towers, preliminary, monthly
401-0006	Aircraft movements by class of operation, airports with NAV CANADA towers, preliminary, annual
401-0007	Aircraft movements, by class of operation and peak hour and peak day of movements, airports with NAV CANADA towers, monthly
401-0008	Aircraft movements, by civil and military movements, airports with NAV CANADA towers, monthly
401-0009	Itinerant movements, by type of operation, airports with NAV CANADA towers, monthly
401-0010	Itinerant movements, by instrument flight rules, visual flight rules and runway 88, airports with NAV CANADA towers, monthly
401-0011	Itinerant movements, by type of power plant, airports with NAV CANADA towers, monthly
401-0012	Itinerant movements, by aircraft gross take-off weight, airports with NAV CANADA towers, monthly
401-0013	Domestic and international itinerant movements, by type of operation, airports with NAV CANADA towers, monthly
401-0014	Aircraft movements, by class of operation and peak hour and peak day of movements, airports with NAV CANADA flight service stations, monthly
401-0015	Aircraft movements, by civil and military movements, airports with NAV CANADA flight service stations, monthly
401-0016	Itinerant movements, by type of operation, airports with NAV CANADA flight service stations, monthly
401-0017	Itinerant movements, by instrument flight rules, visual flight rules and runway 88, airports with NAV CANADA flight service stations, monthly
401-0018	Itinerant movements, by type of power plant, airports with NAV CANADA flight service stations, monthly
401-0019	Itinerant movements, by aircraft gross take-off weight, airports with NAV CANADA flight service stations, monthly
401-0020	Domestic and international itinerant movements, by type of operation, airports with NAV CANADA flight service stations, monthly

---

## **Selected surveys from Statistics Canada**

---

2715	Aircraft Movement Statistics
------	------------------------------

---

## **Selected summary tables from Statistics Canada**

---

- *Aircraft movements by class of operation (monthly)*

# Statistical tables

---

---

**Table 1-1**  
**Total aircraft movements by class of operation — NAV CANADA towers**

	Total		Itinerant		Local	
	Rank of movements	Number of movements	Rank of movements	Number of movements	Rank of movements	Number of movements
Abbotsford	7	14,856	13	5,828	2	9,028
Boundary Bay	9	14,570	14	5,694	3	8,876
Calgary International	3	20,346	3	20,031	36	315
Calgary/Springbank	5	16,984	10	6,423	1	10,561
Chicoutimi/St-Honoré	29	4,960	38	1,660	16	3,300
Edmonton City Centre	23	7,295	16	5,323	23	1,972
Edmonton International	13	10,595	7	10,125	33	470
Edmonton/Villeneuve	28	5,216	41	1,186	14	4,030
Gander International	35	4,042	32	2,330	24	1,712
Halifax/Robert L Stanfield International	25	6,716	12	6,130	32	586
Hamilton	30	4,714	28	3,309	26	1,405
Kelowna	24	6,828	23	3,862	17	2,966
Kitchener/Waterloo	21	8,139	25	3,483	11	4,656
Langley	20	9,073	26	3,323	8	5,750
London	18	9,281	20	4,408	10	4,873
Moncton/Greater Moncton International	19	9,239	18	5,083	13	4,156
Montréal/Mirabel International	40	2,079	37	1,678	34	401
Montréal/Pierre Elliott Trudeau International	4	17,730	4	17,730	0	0
Montréal/St-Hubert	10	12,560	15	5,566	6	6,994
Oshawa	31	4,673	35	1,905	18	2,768
Ottawa/Macdonald-Cartier International	8	14,806	6	10,958	15	3,848
Pitt Meadows	15	9,731	30	3,233	7	6,498
Prince George	32	4,311	33	2,221	22	2,090
Québec/Jean Lesage International	16	9,560	8	7,048	20	2,512
Regina International	33	4,243	29	3,288	29	955
Saskatoon/John G Diefenbaker International	22	7,539	19	5,065	21	2,474
Sault Ste. Marie	36	3,435	36	1,785	25	1,650
St. John's International	37	2,964	31	2,786	38	178
St-Jean	42	1,211	42	823	35	388
Sudbury	39	2,442	34	2,145	37	297
Thunder Bay	17	9,489	17	5,194	12	4,295
Toronto/Buttonville Municipal	6	15,056	11	6,392	4	8,664
Toronto/City Centre	26	6,420	24	3,692	19	2,728
Toronto/Lester B Pearson International	1	33,719	1	33,719	0	0
Vancouver Harbour	34	4,156	21	4,152	39	4
Vancouver International	2	25,089	2	25,089	0	0
Victoria International	12	11,936	9	6,928	9	5,008
Whitehorse International	41	1,929	40	1,215	31	714
Windsor	38	2,780	39	1,578	28	1,202
Winnipeg/James Armstrong Richardson International	11	12,019	5	11,236	30	783
Winnipeg/St. Andrews	14	10,565	27	3,313	5	7,252
Yellowknife	27	5,384	22	4,150	27	1,234
<b>Total of NAV CANADA towers (42)</b>	.	<b>388,680</b>	.	<b>261,087</b>	.	<b>127,593</b>

**Table 1-2**  
**Total aircraft movements by class of operation — NAV CANADA flight service stations**

	Total		Itinerant		Local	
	Rank of movements	Number of movements	Rank of movements	Number of movements	Rank of movements	Number of movements
Brandon Municipal	30	1,383	42	667	14	716
Campbell River	6	3,168	17	1,494	5	1,674
Castlegar	37	954	48	554	18	400
Charlottetown	20	1,959	27	1,055	13	904
Churchill	40	838	36	838	0	0
Cranbrook	39	894	38	762	30	132
Deer Lake	25	1,589	19	1,412	25	177
Fort McMurray	1	4,417	1	4,033	19	384
Fort Nelson	35	1,120	29	1,044	33	76
Fort St John	22	1,755	15	1,541	23	214
Fredericton International	2	4,364	6	2,313	2	2,051
Grande Prairie	5	3,319	5	2,381	12	938
High Level	46	629	45	625	46	4
Îles-de-la-Madeleine	52	324	52	324	0	0
Inuvik/Mike Zubko	24	1,622	16	1,526	31	96
Iqaluit	27	1,518	21	1,350	27	168
Kamloops	14	2,365	10	1,859	17	506
Kenora	41	811	37	765	38	46
Kingston	12	2,650	12	1,604	10	1,046
Kuujuuaq	38	934	33	874	36	60
Kuujuuarapik	49	535	49	535	0	0
La Grande Rivière	42	756	39	748	44	8
La Ronge	31	1,209	26	1,177	40	32
Lethbridge	9	2,797	13	1,585	7	1,212
Lloydminster	36	1,069	40	693	20	376
Medicine Hat	23	1,640	28	1,047	15	593
Mont-Joli	51	477	50	477	0	0
Nanaimo	16	2,202	11	1,652	16	550
Norman Wells	15	2,225	24	1,269	11	956
North Bay	3	4,168	14	1,580	1	2,588
Ottawa/Gatineau	17	2,190	30	1,016	8	1,174
Peace River	48	621	46	617	47	4
Penticton	7	3,096	20	1,350	4	1,746
Port Hardy	45	641	44	635	45	6
Prince Albert	28	1,513	18	1,421	32	92
Prince Rupert	50	490	51	350	29	140
Rankin Inlet	33	1,205	25	1,203	48	2
Red Deer Regional	4	3,494	8	1,932	6	1,562
Rouyn-Noranda	34	1,188	31	962	22	226
Saint John	26	1,550	22	1,348	24	202
Sept-Îles	21	1,932	9	1,864	34	68
Sioux Lookout	11	2,657	4	2,487	26	170
Smithers	44	673	43	651	41	22
St Anthony	53	293	53	293	0	0
St Catharines	19	1,964	34	852	9	1,112
Terrace	29	1,481	23	1,314	28	167
Thompson	10	2,742	3	2,728	43	14
Timmins	18	2,159	7	2,101	37	58
Val-D'or	32	1,208	32	922	21	286
Victoria Harbour	8	3,018	2	2,998	42	20
Wabush	47	625	47	591	39	34
Whitecourt	13	2,594	35	842	3	1,752
Williams Lake	43	746	41	684	35	62
<b>Total of all flight service stations (53)</b>	.	<b>91,771</b>	.	<b>66,945</b>	.	<b>24,826</b>

**Table 2-1**  
**Total aircraft movements, civil and military — NAV CANADA towers**

	Civil movements			Military movements				
	Total	Itinerant		Local	Total	Itinerant		Local
		Commercial	Private and government					
	number							
Abbotsford	14,811	4,902	883	9,026	45	43	2	
Boundary Bay	14,568	4,627	1,065	8,876	2	2	0	
Calgary International	20,257	18,581	1,361	315	89	89	0	
Calgary/Springbank	16,951	4,619	1,777	10,555	33	27	6	
Chicoutimi/St-Honoré	4,960	1,579	81	3,300	0	0	0	
Edmonton City Centre	7,197	3,536	1,701	1,960	98	86	12	
Edmonton International	10,534	9,751	327	456	61	47	14	
Edmonton/Villeneuve	5,193	962	201	4,030	23	23	0	
Gander International	3,635	1,661	468	1,506	407	201	206	
Halifax/Robert L. Stanfield International	6,391	5,535	402	454	325	193	132	
Hamilton	4,692	2,668	619	1,405	22	22	0	
Kelowna	6,810	3,314	530	2,966	18	18	0	
Kitchener/Waterloo	8,127	2,690	781	4,656	12	12	0	
Langley	9,042	2,030	1,272	5,740	31	21	10	
London	9,279	3,437	969	4,873	2	2	0	
Moncton/Greater Moncton International	9,235	4,607	472	4,156	4	4	0	
Montréal/Mirabel International	1,931	1,145	431	355	148	102	46	
Montréal/Pierre Elliott Trudeau International	17,702	16,118	1,584	0	28	28	0	
Montréal/St-Hubert	12,440	4,028	1,422	6,990	120	116	4	
Oshawa	4,669	1,250	651	2,768	4	4	0	
Ottawa/Macdonald-Cartier International	14,559	9,853	904	3,802	247	201	46	
Pitt Meadows	9,724	1,918	1,308	6,498	7	7	0	
Prince George	4,309	2,002	217	2,090	2	2	0	
Québec/Jean Lesage International	9,378	5,785	1,085	2,508	182	178	4	
Regina International	3,986	2,547	518	921	257	223	34	
Saskatoon/John G. Diefenbaker International	7,329	4,200	707	2,422	210	158	52	
Sault Ste. Marie	3,376	1,598	148	1,630	59	39	20	
St. John's International	2,797	2,350	269	178	167	167	0	
St-Jean	1,148	504	256	388	63	63	0	
Sudbury	2,424	1,943	184	297	18	18	0	
Thunder Bay	9,354	4,759	336	4,259	135	99	36	
Toronto/Buttonville Municipal	15,055	4,762	1,629	8,664	1	1	0	
Toronto/City Centre	6,392	3,105	559	2,728	28	28	0	
Toronto/Lester B. Pearson International	33,684	32,166	1,518	0	35	35	0	
Vancouver Harbour	4,154	4,041	109	4	2	2	0	
Vancouver International	25,064	24,037	1,027	0	25	25	0	
Victoria International	11,657	5,622	1,245	4,790	279	61	218	
Whitehorse International	1,903	999	204	700	26	12	14	
Windsor	2,760	1,297	273	1,190	20	8	12	
Winnipeg/James Armstrong Richardson International	11,324	9,993	670	661	695	573	122	
Winnipeg/St. Andrews	10,551	3,022	277	7,252	14	14	0	
Yellowknife	5,250	3,947	157	1,146	134	46	88	
<b>Total of NAV CANADA towers (42)</b>	<b>384,602</b>	<b>227,490</b>	<b>30,597</b>	<b>126,515</b>	<b>4,078</b>	<b>3,000</b>	<b>1,078</b>	

**Table 2-2**  
**Total aircraft movements, civil and military — NAV CANADA flight service stations**

	Civil movements				Military movements		
	Total	Itinerant		Local	Total	Itinerant	Local
		Commercial	Private and government				
	number						
Brandon Municipal	1,290	449	125	716	93	93	0
Campbell River	3,154	1,112	368	1,674	14	14	0
Castlegar	940	497	43	400	14	14	0
Charlottetown	1,951	954	93	904	8	8	0
Churchill	838	825	13	0	0	0	0
Cranbrook	884	635	117	132	10	10	0
Deer Lake	1,571	1,354	46	171	18	12	6
Fort McMurray	4,407	3,565	458	384	10	10	0
Fort Nelson	1,120	954	90	76	0	0	0
Fort St John	1,749	1,373	162	214	6	6	0
Fredericton International	4,253	1,392	811	2,050	111	110	1
Grande Prairie	3,317	1,909	470	938	2	2	0
High Level	627	576	47	4	2	2	0
Îles-de-la-Madeleine	316	284	32	0	8	8	0
Inuvik/Mike Zubko	1,570	1,435	39	96	52	52	0
Iqaluit	1,504	1,109	227	168	14	14	0
Kamloops	2,294	1,523	269	502	71	67	4
Kenora	783	681	56	46	28	28	0
Kingston	2,595	1,206	343	1,046	55	55	0
Kuujuaq	934	812	62	60	0	0	0
Kuujuarapik	535	531	4	0	0	0	0
La Grande Rivière	756	712	36	8	0	0	0
La Ronge	1,207	1,098	77	32	2	2	0
Lethbridge	2,751	1,203	362	1,186	46	20	26
Lloydminster	1,065	457	232	376	4	4	0
Medicine Hat	1,608	801	222	585	32	24	8
Mont-Joli	477	451	26	0	0	0	0
Nanaimo	2,099	1,030	613	456	103	9	94
Norman Wells	2,219	1,158	105	956	6	6	0
North Bay	4,130	1,290	252	2,588	38	38	0
Ottawa/Gatineau	2,172	540	458	1,174	18	18	0
Peace River	619	527	88	4	2	2	0
Penticton	3,050	1,020	284	1,746	46	46	0
Port Hardy	633	527	100	6	8	8	0
Prince Albert	1,493	1,250	157	86	20	14	6
Prince Rupert	490	318	32	140	0	0	0
Rankin Inlet	1,203	1,179	22	2	2	2	0
Red Deer Regional	3,482	1,326	594	1,562	12	12	0
Rouyn-Noranda	1,188	795	167	226	0	0	0
Saint John	1,505	993	310	202	45	45	0
Sept-Îles	1,932	1,736	128	68	0	0	0
Sioux Lookout	2,657	2,442	45	170	0	0	0
Smithers	671	597	52	22	2	2	0
St Anthony	285	282	3	0	8	8	0
St Catharines	1,844	437	295	1,112	120	120	0
Terrace	1,481	1,262	52	167	0	0	0
Thompson	2,742	2,520	208	14	0	0	0
Timmins	2,157	1,999	100	58	2	2	0
Val-D'or	1,206	728	192	286	2	2	0
Victoria Harbour	3,016	2,708	288	20	2	2	0
Wabush	615	543	38	34	10	10	0
Whitecourt	2,592	768	72	1,752	2	2	0
Williams Lake	741	593	86	62	5	5	0
<b>Total of all flight service stations (53)</b>	<b>90,718</b>	<b>56,466</b>	<b>9,571</b>	<b>24,681</b>	<b>1,053</b>	<b>908</b>	<b>145</b>

**Table 3-1**  
**Itinerant movements by type of operator — NAV CANADA towers**

	Total	Air carrier movements		Other commercial movements	Private movements	Government movements	
		Levels I to III and foreign	Levels IV to VI			Civil	Military
	number						
Abbotsford	5,828	535	2,785	1,582	705	178	43
Boundary Bay	5,694	26	1,110	3,491	1,026	39	2
Calgary International	20,031	16,516	1,193	872	1,196	165	89
Calgary/Springbank	6,423	40	1,068	3,511	1,751	26	27
Chicoutimi/St-Honoré	1,660	16	465	1,098	79	2	0
Edmonton City Centre	5,323	1,633	537	1,366	1,321	380	86
Edmonton International	10,125	9,173	374	204	306	21	47
Edmonton/Villeneuve	1,186	10	268	684	201	0	23
Gander International	2,330	564	1,051	46	421	47	201
Halifax/Robert L Stanfield International	6,130	4,919	565	51	322	80	193
Hamilton	3,309	1,850	743	75	462	157	22
Kelowna	3,862	2,351	292	671	438	92	18
Kitchener/Waterloo	3,483	457	1,623	610	776	5	12
Langley	3,323	115	138	1,777	1,258	14	21
London	4,408	1,156	907	1,374	912	57	2
Moncton/Greater Moncton International	5,083	1,680	2,553	374	308	164	4
Montréal/Mirabel International	1,678	862	262	21	419	12	102
Montréal/Pierre Elliott Trudeau International	17,730	14,998	737	383	1,406	178	28
Montréal/St-Hubert	5,566	2,052	528	1,448	1,348	74	116
Oshawa	1,905	125	83	1,042	647	4	4
Ottawa/Macdonald-Cartier International	10,958	7,249	381	2,223	455	449	201
Pitt Meadows	3,233	38	907	973	1,296	12	7
Prince George	2,221	1,306	501	195	187	30	2
Québec/Jean Lesage International	7,048	3,844	604	1,337	717	368	178
Regina International	3,288	2,040	440	67	347	171	223
Saskatoon/John G Diefenbaker International	5,065	2,973	861	366	422	285	158
Sault Ste. Marie	1,785	792	168	638	113	35	39
St. John's International	2,786	1,213	1,058	79	104	165	167
St-Jean	823	145	122	237	252	4	63
Sudbury	2,145	1,439	459	45	152	32	18
Thunder Bay	5,194	3,208	621	930	197	139	99
Toronto/Butterville Municipal	6,392	424	845	3,493	1,577	52	1
Toronto/City Centre	3,692	1,105	776	1,224	507	52	28
Toronto/Lester B Pearson International	33,719	31,472	459	235	1,477	41	35
Vancouver Harbour	4,152	3,786	93	162	109	0	2
Vancouver International	25,089	22,384	1,334	319	765	262	25
Victoria International	6,928	2,974	2,041	607	1,170	75	61
Whitehorse International	1,215	637	342	20	176	28	12
Windsor	1,578	519	715	63	265	8	8
Winnipeg/James Armstrong Richardson International	11,236	9,060	813	120	344	326	573
Winnipeg/St. Andrews	3,313	469	1,782	771	267	10	14
Yellowknife	4,150	3,300	620	27	112	45	46
<b>Total of NAV CANADA towers (42)</b>	<b>261,087</b>	<b>159,455</b>	<b>33,224</b>	<b>34,811</b>	<b>26,313</b>	<b>4,284</b>	<b>3,000</b>



**Table 3-2**  
**Itinerant movements by type of operator — NAV CANADA flight service stations**

	Total	Air carrier movements		Other commercial movements	Private movements	Government movements	
		Levels I to III and foreign	Levels IV to VI			Civil	Military
	number						
Brandon Municipal	667	149	247	53	114	11	93
Campbell River	1,494	635	280	197	338	30	14
Castlegar	554	289	40	168	41	2	14
Charlottetown	1,055	534	47	373	50	43	8
Churchill	838	744	79	2	5	8	0
Cranbrook	762	527	67	41	109	8	10
Deer Lake	1,412	699	639	16	18	28	12
Fort McMurray	4,033	2,588	643	334	399	59	10
Fort Nelson	1,044	328	298	328	88	2	0
Fort St John	1,541	768	479	126	156	6	6
Fredericton International	2,313	838	524	30	693	118	110
Grande Prairie	2,381	1,286	541	82	440	30	2
High Level	625	219	147	210	35	12	2
Îles-de-la-Madeleine	324	280	0	4	2	30	8
Inuvik/Mike Zubko	1,526	553	880	2	7	32	52
Iqaluit	1,350	988	50	71	67	160	14
Kamloops	1,859	1,140	248	135	221	48	67
Kenora	765	360	298	23	41	15	28
Kingston	1,604	547	273	386	296	47	55
Kuujuuaq	874	779	27	6	24	38	0
Kuujuuarapik	535	511	18	2	0	4	0
La Grande Rivière	748	553	154	5	22	14	0
La Ronge	1,177	1,027	9	62	16	61	2
Lethbridge	1,585	602	35	566	346	16	20
Lloydminster	693	140	246	71	214	18	4
Medicine Hat	1,047	719	44	38	205	17	24
Mont-Joli	477	435	4	12	8	18	0
Nanaimo	1,652	440	424	166	561	52	9
Norman Wells	1,269	707	400	51	93	12	6
North Bay	1,580	538	393	359	220	32	38
Ottawa/Gatineau	1,016	153	254	133	403	55	18
Peace River	617	434	87	6	68	20	2
Penticton	1,350	497	477	46	232	52	46
Port Hardy	635	447	64	16	27	73	8
Prince Albert	1,421	1,137	26	87	77	80	14
Prince Rupert	350	198	114	6	6	26	0
Rankin Inlet	1,203	954	223	2	4	18	2
Red Deer Regional	1,932	400	693	233	565	29	12
Rouyn-Noranda	962	600	133	62	147	20	0
Saint John	1,348	718	174	101	306	4	45
Sept-Îles	1,864	1,227	465	44	70	58	0
Sioux Lookout	2,487	2,117	271	54	34	11	0
Smithers	651	495	75	27	48	4	2
St Anthony	293	51	187	44	0	3	8
St Catharines	852	10	394	33	287	8	120
Terrace	1,314	675	564	23	46	6	0
Thompson	2,728	2,207	284	29	19	189	0
Timmins	2,101	1,734	247	18	84	16	2
Val-D'or	922	662	42	24	166	26	2
Victoria Harbour	2,998	2,674	32	2	222	66	2
Wabush	591	285	252	6	24	14	10
Whitecourt	842	56	447	265	62	10	2
Williams Lake	684	417	127	49	78	8	5
<b>Total of all flight service stations (53)</b>	<b>66,945</b>	<b>38,071</b>	<b>13,166</b>	<b>5,229</b>	<b>7,804</b>	<b>1,767</b>	<b>908</b>

Table 4-1

Itinerant movements by I.F.R. (Instrument flight rules) and V.F.R. (Visual flight rules) and runway 88 movements  
— NAV CANADA towers

	Itinerant movements				Runway 88 flights number	
	Total of IFR and VFR flights <sup>1</sup>	IFR	IFR flights, as percentage of total flights	VFR		VFR flights, as percentage of total flights
	number		percent	number		percent
Abbotsford	5,828	1,390	23.8	4,438	76.1	1,278
Boundary Bay	5,694	413	7.2	5,281	92.7	399
Calgary International	20,031	18,485	92.2	1,546	7.7	707
Calgary/Springbank	6,423	223	3.4	6,200	96.5	2,917
Chicoutimi/St-Honoré	1,660	229	13.7	1,431	86.2	22
Edmonton City Centre	5,323	2,884	54.1	2,439	45.8	3,560
Edmonton International	10,125	9,645	95.2	480	4.7	1,067
Edmonton/Villeneuve	1,186	14	1.1	1,172	98.8	99
Gander International	2,330	1,260	54.0	1,070	45.9	130
Halifax/Robert L Stanfield International	6,130	5,592	91.2	538	8.7	367
Hamilton	3,309	2,449	74.0	860	25.9	700
Kelowna	3,862	2,518	65.1	1,344	34.8	550
Kitchener/Waterloo	3,483	906	26.0	2,577	73.9	374
Langley	3,323	30	0.9	3,293	99.0	2,979
London	4,408	1,435	32.5	2,973	67.4	272
Moncton/Greater Moncton International	5,083	2,089	41.0	2,994	58.9	77
Montréal/Mirabel International	1,678	1,044	62.2	634	37.7	785
Montréal/Pierre Elliott Trudeau International	17,730	17,046	96.1	684	3.8	2,609
Montréal/St-Hubert	5,566	1,543	27.7	4,023	72.2	1,204
Oshawa	1,905	83	4.3	1,822	95.6	538
Ottawa/Macdonald-Cartier International	10,958	8,054	73.4	2,904	26.5	775
Pitt Meadows	3,233	1	0.0	3,232	99.9	2,169
Prince George	2,221	1,462	65.8	759	34.1	224
Québec/Jean Lesage International	7,048	4,531	64.2	2,517	35.7	349
Regina International	3,288	2,462	74.8	826	25.1	46
Saskatoon/John G Diefenbaker International	5,065	3,411	67.3	1,654	32.6	87
Sault Ste. Marie	1,785	1,030	57.7	755	42.2	67
St. John's International	2,786	2,611	93.7	175	6.2	118
St-Jean	823	245	29.7	578	70.2	189
Sudbury	2,145	1,788	83.3	357	16.6	141
Thunder Bay	5,194	3,708	71.3	1,486	28.6	144
Toronto/Buttonville Municipal	6,392	864	13.5	5,528	86.4	397
Toronto/City Centre	3,692	1,422	38.5	2,270	61.4	2,569
Toronto/Lester B Pearson International	33,719	33,639	99.7	80	0.2	75
Vancouver Harbour	4,152	93	2.2	4,059	97.7	1,847
Vancouver International	25,089	20,364	81.1	4,725	18.8	8,177
Victoria International	6,928	3,359	48.4	3,569	51.5	5,892
Whitehorse International	1,215	495	40.7	720	59.2	83
Windsor	1,578	675	42.7	903	57.2	47
Winnipeg/James Armstrong Richardson International	11,236	9,838	87.5	1,398	12.4	742
Winnipeg/St. Andrews	3,313	132	3.9	3,181	96.0	155
Yellowknife	4,150	2,614	62.9	1,536	37.0	10
<b>Total of NAV CANADA towers (42)</b>	<b>261,087</b>	<b>172,076</b>	<b>65.9</b>	<b>89,011</b>	<b>34.1</b>	<b>44,937</b>

1. Total excludes runway 88 flights.

Table 4-2

## Itinerant movements by I.F.R. (Instrument flight rules) and V.F.R. (Visual flight rules) and runway 88 movements — NAV CANADA flight service stations

	Itinerant movements				Runway 88 flights number	
	Total of IFR and VFR flights <sup>1</sup>	IFR	IFR flights, as percentage of total flights	VFR		VFR flights, as percentage of total flights
	number		percent	number		percent
Brandon Municipal	667	225	33.7	442	66.2	36
Campbell River	1,494	540	36.1	954	63.8	192
Castlegar	554	319	57.5	235	42.4	55
Charlottetown	1,055	599	56.7	456	43.2	6
Churchill	838	755	90.0	83	9.9	362
Cranbrook	762	591	77.5	171	22.4	95
Deer Lake	1,412	1,314	93.0	98	6.9	49
Fort McMurray	4,033	2,214	54.8	1,819	45.1	23
Fort Nelson	1,044	353	33.8	691	66.1	78
Fort St John	1,541	783	50.8	758	49.1	85
Fredericton International	2,313	1,022	44.1	1,291	55.8	78
Grande Prairie	2,381	1,509	63.3	872	36.6	132
High Level	625	314	50.2	311	49.7	236
Îles-de-la-Madeleine	324	319	98.4	5	1.5	3
Inuvik/Mike Zubko	1,526	405	26.5	1,121	73.4	0
Iqaluit	1,350	1,086	80.4	264	19.5	41
Kamloops	1,859	1,336	71.8	523	28.1	174
Kenora	765	513	67.0	252	32.9	74
Kingston	1,604	702	43.7	902	56.2	93
Kuujuuaq	874	407	46.5	467	53.4	2
Kuujuuarapik	535	332	62.0	203	37.9	0
La Grande Rivière	748	571	76.3	177	23.6	339
La Ronge	1,177	750	63.7	427	36.2	142
Lethbridge	1,585	680	42.9	905	57.0	31
Lloydminster	693	316	45.5	377	54.4	27
Medicine Hat	1,047	454	43.3	593	56.6	218
Mont-Joli	477	420	88.0	57	11.9	8
Nanaimo	1,652	528	31.9	1,124	68.0	665
Norman Wells	1,269	173	13.6	1,096	86.3	443
North Bay	1,580	725	45.8	855	54.1	222
Ottawa/Gatineau	1,016	189	18.6	827	81.3	42
Peace River	617	433	70.1	184	29.8	28
Penticton	1,350	490	36.2	860	63.7	88
Port Hardy	635	220	34.6	415	65.3	258
Prince Albert	1,421	1,256	88.3	165	11.6	38
Prince Rupert	350	209	59.7	141	40.2	2
Rankin Inlet	1,203	791	65.7	412	34.2	0
Red Deer Regional	1,932	457	23.6	1,475	76.3	307
Rouyn-Noranda	962	788	81.9	174	18.0	30
Saint John	1,348	964	71.5	384	28.4	17
Sept-Îles	1,864	1,376	73.8	488	26.1	230
Sioux Lookout	2,487	1,824	73.3	663	26.6	109
Smithers	651	495	76.0	156	23.9	97
St Anthony	293	220	75.0	73	24.9	0
St Catharines	852	85	9.9	767	90.0	187
Terrace	1,314	695	52.8	619	47.1	208
Thompson	2,728	1,873	68.6	855	31.3	12
Timmins	2,101	1,898	90.3	203	9.6	75
Val-D'or	922	700	75.9	222	24.0	122
Victoria Harbour	2,998	125	4.1	2,873	95.8	401
Wabush	591	556	94.0	35	5.9	91
Whitecourt	842	109	12.9	733	87.0	42
Williams Lake	684	471	68.8	213	31.1	166
<b>Total of all flight service stations (53)</b>	<b>66,945</b>	<b>36,479</b>	<b>54.5</b>	<b>30,466</b>	<b>45.5</b>	<b>6,459</b>

1. Total excludes runway 88 flights.

**Table 5-1**  
**Itinerant movements by type of power plant — NAV CANADA towers**

	Total	Jet engines	Turbo-propellers	Piston engines	Helicopters	Gliders
	number					
Abbotsford	5,828	450	294	3,678	1,403	3
Boundary Bay	5,694	0	21	5,438	234	1
Calgary International	20,031	12,987	5,381	1,142	521	0
Calgary/Springbank	6,423	19	135	5,071	1,197	1
Chicoutimi/St-Honoré	1,660	2	33	1,213	410	2
Edmonton City Centre	5,323	457	2,197	1,988	681	0
Edmonton International	10,125	6,295	3,357	446	26	1
Edmonton/Villeneuve	1,186	14	12	867	291	2
Gander International	2,330	732	482	919	197	0
Halifax/Robert L Stanfield International	6,130	3,671	1,727	325	407	0
Hamilton	3,309	1,544	829	818	118	0
Kelowna	3,862	1,304	1,264	798	496	0
Kitchener/Waterloo	3,483	250	455	2,501	277	0
Langley	3,323	0	109	2,591	621	2
London	4,408	403	1,238	2,620	147	0
Moncton/Greater Moncton International	5,083	1,049	793	3,195	45	1
Montréal/Mirabel International	1,678	775	314	414	175	0
Montréal/Pierre Elliott Trudeau International	17,730	11,648	5,275	591	216	0
Montréal/St-Hubert	5,566	270	845	3,974	477	0
Oshawa	1,905	5	72	1,731	96	1
Ottawa/Macdonald-Cartier International	10,958	5,879	2,218	2,595	266	0
Pitt Meadows	3,233	0	8	2,815	409	1
Prince George	2,221	482	1,009	185	545	0
Québec/Jean Lesage International	7,048	1,146	3,084	1,859	959	0
Regina International	3,288	1,429	788	1,027	44	0
Saskatoon/John G Diefenbaker International	5,065	1,478	1,792	1,746	49	0
Sault Ste. Marie	1,785	53	937	761	33	1
St. John's International	2,786	1,090	1,402	32	262	0
St-Jean	823	2	50	695	69	7
Sudbury	2,145	23	1,699	249	174	0
Thunder Bay	5,194	808	2,992	1,094	300	0
Toronto/Buttonville Municipal	6,392	143	516	5,052	681	0
Toronto/City Centre	3,692	0	1,323	1,989	380	0
Toronto/Lester B Pearson International	33,719	28,285	5,362	46	26	0
Vancouver Harbour	4,152	0	2,017	1,266	869	0
Vancouver International	25,089	11,673	9,491	2,876	1,049	0
Victoria International	6,928	997	2,231	3,382	318	0
Whitehorse International	1,215	301	354	413	147	0
Windsor	1,578	97	550	914	17	0
Winnipeg/James Armstrong Richardson International	11,236	5,082	4,649	1,315	190	0
Winnipeg/St. Andrews	3,313	0	280	2,929	103	1
Yellowknife	4,150	765	2,527	415	443	0
<b>Total of NAV CANADA towers (42)</b>	<b>261,087</b>	<b>101,608</b>	<b>70,112</b>	<b>73,975</b>	<b>15,368</b>	<b>24</b>

**Table 5-2**  
**Itinerant movements by type of power plant — NAV CANADA flight service stations**

	Total	Jet engines	Turbo-propellers	Piston engines	Helicopters	Gliders
	number					
Brandon Municipal	667	6	220	413	28	0
Campbell River	1,494	19	676	429	370	0
Castlegar	554	19	303	164	68	0
Charlottetown	1,055	164	341	534	16	0
Churchill	838	32	783	8	15	0
Cranbrook	762	14	540	193	15	0
Deer Lake	1,412	209	1,103	42	58	0
Fort McMurray	4,033	848	1,586	849	750	0
Fort Nelson	1,044	31	359	155	499	0
Fort St John	1,541	266	620	158	497	0
Fredericton International	2,313	288	654	1,211	160	0
Grande Prairie	2,381	225	1,215	524	417	0
High Level	625	6	349	165	105	0
Îles-de-la-Madeleine	324	14	282	26	2	0
Inuvik/Mike Zubko	1,526	152	882	262	230	0
Iqaluit	1,350	356	921	19	54	0
Kamloops	1,859	48	1,181	415	215	0
Kenora	765	8	486	123	148	0
Kingston	1,604	46	666	775	117	0
Kuujuuaq	874	146	677	26	25	0
Kuujuuarapik	535	4	517	0	14	0
La Grande Rivière	748	0	719	19	10	0
La Ronge	1,177	6	949	167	55	0
Lethbridge	1,585	77	674	819	14	1
Lloydminster	693	20	293	348	32	0
Medicine Hat	1,047	55	438	514	40	0
Mont-Joli	477	12	397	68	0	0
Nanaimo	1,652	21	455	1,114	62	0
Norman Wells	1,269	122	376	402	368	1
North Bay	1,580	66	686	485	343	0
Ottawa/Gatineau	1,016	7	171	668	170	0
Peace River	617	4	406	129	78	0
Penticton	1,350	27	538	351	434	0
Port Hardy	635	8	402	102	123	0
Prince Albert	1,421	19	1,189	176	37	0
Prince Rupert	350	10	228	2	110	0
Rankin Inlet	1,203	169	810	6	218	0
Red Deer Regional	1,932	28	493	1,227	184	0
Rouyn-Noranda	962	84	729	139	10	0
Saint John	1,348	326	525	445	52	0
Sept-Îles	1,864	14	1,195	399	256	0
Sioux Lookout	2,487	4	2,102	347	34	0
Smithers	651	6	530	45	70	0
St Anthony	293	0	273	2	18	0
St Catharines	852	30	22	666	134	0
Terrace	1,314	30	691	13	580	0
Thompson	2,728	118	2,171	267	172	0
Timmins	2,101	8	1,839	183	71	0
Val-D'or	922	88	615	143	76	0
Victoria Harbour	2,998	0	1,896	216	886	0
Wabush	591	2	539	23	27	0
Whitecourt	842	6	103	96	637	0
Williams Lake	684	8	434	140	102	0
<b>Total of all flight service stations (53)</b>	<b>66,945</b>	<b>4,276</b>	<b>37,249</b>	<b>16,212</b>	<b>9,206</b>	<b>2</b>

**Table 6-1**  
**Itinerant movements by aircraft weight group — NAV CANADA towers**

	Gross take-off weight in kilograms									
	2 000	2 001	4 001	5 671	9 001	18 001	35 001	70 001	90 001	136 001
	and under	to 4 000	to 5 670	to 9 000	to 18 000	to 35 000	to 70 000	to 90 000	to 136 000	and over
	number									
Abbotsford	4,618	448	213	66	23	21	422	17	0	0
Boundary Bay	5,327	349	18	0	0	0	0	0	0	0
Calgary International	1,149	613	1,734	2,580	891	3,695	7,575	687	609	498
Calgary/Springbank	5,928	291	181	21	2	0	0	0	0	0
Chicoutimi/St-Honoré	1,344	263	51	2	0	0	0	0	0	0
Edmonton City Centre	2,105	607	1,620	760	203	28	0	0	0	0
Edmonton International	317	242	558	1,043	468	2,440	4,288	392	217	160
Edmonton/Villeneuve	1,066	88	32	0	0	0	0	0	0	0
Gander International	974	4	129	241	456	303	14	50	33	126
Halifax/Robert L. Stanfield International	142	263	400	909	913	1,358	1,657	168	191	129
Hamilton	775	314	323	340	242	184	406	21	659	45
Kelowna	1,149	117	178	683	273	507	940	0	15	0
Kitchener/Waterloo	2,612	185	278	79	239	24	65	0	1	0
Langley	3,053	241	24	0	5	0	0	0	0	0
London	2,838	199	197	82	711	212	166	0	3	0
Moncton/Greater Moncton International	3,116	164	330	295	154	536	212	12	264	0
Montréal/Mirabel International	431	179	79	139	43	205	140	7	292	163
Montréal/Pierre Elliott Trudeau International	554	238	633	1,132	3,028	5,496	3,887	1,182	46	1,534
Montréal/St-Hubert	3,800	545	868	137	164	7	17	2	26	0
Oshawa	1,713	116	65	3	6	2	0	0	0	0
Ottawa/Macdonald-Cartier International	2,587	132	926	309	712	3,072	2,169	700	227	124
Pitt Meadows	3,187	32	10	0	4	0	0	0	0	0
Prince George	524	126	317	603	24	445	182	0	0	0
Québec/Jean Lesage International	2,171	573	792	343	1,470	1,434	175	28	4	58
Regina International	696	410	371	434	57	605	624	3	88	0
Saskatoon/John G. Diefenbaker International	1,301	543	713	777	170	729	766	0	66	0
Sault Ste. Marie	745	158	485	64	192	137	4	0	0	0
St. John's International	22	39	369	439	767	116	754	191	81	8
St-Jean	617	113	58	2	33	0	0	0	0	0
Sudbury	183	304	1,202	106	114	236	0	0	0	0
Thunder Bay	1,154	266	2,505	302	203	473	283	8	0	0
Toronto/Buttonville Municipal	5,320	436	445	122	60	9	0	0	0	0
Toronto/City Centre	1,981	203	587	30	0	889	0	2	0	0
Toronto/Lester B. Pearson International	23	283	408	2,481	3,849	7,296	11,442	4,269	281	3,387
Vancouver Harbour	95	2,676	1,255	48	78	0	0	0	0	0
Vancouver International	823	3,527	1,087	2,911	2,982	4,155	6,267	754	467	2,116
Victoria International	2,936	905	144	480	1,264	581	558	12	42	6
Whitehorse International	454	175	102	40	4	292	146	0	2	0
Windsor	871	128	51	137	249	128	4	4	6	0
Winnipeg/James Armstrong Richardson International	780	789	3,216	546	945	1,382	2,407	358	803	10
Winnipeg/St. Andrews	2,546	666	91	4	6	0	0	0	0	0
Yellowknife	498	490	912	195	367	855	603	230	0	0
<b>Total of NAV CANADA towers (42)</b>	<b>72,525</b>	<b>18,440</b>	<b>23,957</b>	<b>18,885</b>	<b>21,371</b>	<b>37,852</b>	<b>46,173</b>	<b>9,097</b>	<b>4,423</b>	<b>8,364</b>

**Table 6-2**  
**Itinerant movements by aircraft weight group — NAV CANADA flight service stations**

	Gross take-off weight in kilograms									
	2 000 and under	2 001 to 4 000	4 001 to 5 670	5 671 to 9 000	9 001 to 18 000	18 001 to 35 000	35 001 to 70 000	70 001 to 90 000	90 001 to 136 000	136 001 and over
	number									
Brandon Municipal	376	54	200	7	22	2	0	6	0	0
Campbell River	725	54	66	423	202	22	2	0	0	0
Castlegar	210	20	22	85	26	191	0	0	0	0
Charlottetown	388	202	55	118	126	120	46	0	0	0
Churchill	16	69	113	85	153	394	8	0	0	0
Cranbrook	166	41	64	273	146	72	0	0	0	0
Deer Lake	71	19	131	133	859	116	83	0	0	0
Fort McMurray	1,196	705	393	606	201	618	304	0	10	0
Fort Nelson	542	142	127	125	98	6	4	0	0	0
Fort St John	564	58	307	263	109	240	0	0	0	0
Fredericton International	1,142	131	237	180	209	396	6	4	0	8
Grande Prairie	708	249	526	362	11	405	120	0	0	0
High Level	244	64	175	140	0	2	0	0	0	0
Îles-de-la-Madeleine	2	24	82	0	181	29	6	0	0	0
Inuvik/Mike Zubko	190	145	710	120	119	100	124	18	0	0
Iqaluit	30	23	477	95	44	398	174	18	89	2
Kamloops	399	201	116	330	366	447	0	0	0	0
Kenora	110	46	575	8	26	0	0	0	0	0
Kingston	792	58	165	494	81	10	2	2	0	0
Kuujuuaq	41	6	546	0	97	66	82	0	36	0
Kuujuuarapik	14	0	247	4	188	82	0	0	0	0
La Grande Rivière	12	73	110	6	156	391	0	0	0	0
La Ronge	43	169	488	129	206	142	0	0	0	0
Lethbridge	734	116	221	498	12	4	0	0	0	0
Lloydminster	345	65	156	123	4	0	0	0	0	0
Medicine Hat	451	87	217	248	30	14	0	0	0	0
Mont-Joli	6	62	156	58	113	82	0	0	0	0
Nanaimo	872	333	70	67	61	249	0	0	0	0
Norman Wells	450	180	344	8	101	64	122	0	0	0
North Bay	780	136	331	105	176	52	0	0	0	0
Ottawa/Gatineau	761	67	66	110	1	5	0	6	0	0
Peace River	85	116	352	58	6	0	0	0	0	0
Penticton	757	24	42	330	58	139	0	0	0	0
Port Hardy	73	112	217	78	149	2	4	0	0	0
Prince Albert	72	129	209	405	250	356	0	0	0	0
Prince Rupert	8	120	26	24	56	116	0	0	0	0
Rankin Inlet	216	64	265	168	177	153	158	2	0	0
Red Deer Regional	1,198	227	337	136	17	2	7	8	0	0
Rouyn-Noranda	130	21	358	32	215	146	60	0	0	0
Saint John	272	187	153	279	225	198	33	1	0	0
Sept-Îles	297	358	447	103	638	21	0	0	0	0
Sioux Lookout	204	199	1,574	510	0	0	0	0	0	0
Smithers	109	20	77	217	119	109	0	0	0	0
St Anthony	10	2	182	3	96	0	0	0	0	0
St Catharines	722	80	28	3	11	8	0	0	0	0
Terrace	535	8	87	241	265	178	0	0	0	0
Thompson	202	495	1,361	26	278	276	90	0	0	0
Timmins	126	232	981	107	505	148	0	2	0	0
Val-D'or	205	11	263	16	303	60	0	0	64	0
Victoria Harbour	30	1,501	1,283	54	130	0	0	0	0	0
Wabush	15	27	71	47	429	2	0	0	0	0
Whitecourt	700	62	45	35	0	0	0	0	0	0
Williams Lake	191	47	26	372	43	0	5	0	0	0
<b>Total of all flight service stations (53)</b>	<b>18,537</b>	<b>7,641</b>	<b>15,877</b>	<b>8,447</b>	<b>8,094</b>	<b>6,633</b>	<b>1,440</b>	<b>67</b>	<b>199</b>	<b>10</b>

**Table 7-1**  
**Itinerant movements, domestic, transborder and international — NAV CANADA towers**

	Total	Air carrier movements		Other commercial movements	Private movements	Government movements	
		Levels I to III and foreign	Levels IV to VI			Civil	Military
number							
<b>Abbotsford</b>							
Domestic	5,769	527	2,779	1,581	669	178	35
Transborder	59	8	6	1	36	0	8
Other international	0	0	0	0	0	0	0
<b>Total</b>	<b>5,828</b>	<b>535</b>	<b>2,785</b>	<b>1,582</b>	<b>705</b>	<b>178</b>	<b>43</b>
<b>Boundary Bay</b>							
Domestic	5,648	26	1,106	3,472	1,003	39	2
Transborder	46	0	4	19	23	0	0
Other international	0	0	0	0	0	0	0
<b>Total</b>	<b>5,694</b>	<b>26</b>	<b>1,110</b>	<b>3,491</b>	<b>1,026</b>	<b>39</b>	<b>2</b>
<b>Calgary International</b>							
Domestic	16,273	13,202	1,093	801	937	164	76
Transborder	3,310	2,885	100	70	251	1	3
Other international	448	429	0	1	8	0	10
<b>Total</b>	<b>20,031</b>	<b>16,516</b>	<b>1,193</b>	<b>872</b>	<b>1,196</b>	<b>165</b>	<b>89</b>
<b>Calgary/Springbank</b>							
Domestic	6,369	40	1,058	3,510	1,708	26	27
Transborder	48	0	7	1	40	0	0
Other international	6	0	3	0	3	0	0
<b>Total</b>	<b>6,423</b>	<b>40</b>	<b>1,068</b>	<b>3,511</b>	<b>1,751</b>	<b>26</b>	<b>27</b>
<b>Chicoutimi/St-Honoré</b>							
Domestic	1,660	16	465	1,098	79	2	0
Transborder	0	0	0	0	0	0	0
Other international	0	0	0	0	0	0	0
<b>Total</b>	<b>1,660</b>	<b>16</b>	<b>465</b>	<b>1,098</b>	<b>79</b>	<b>2</b>	<b>0</b>
<b>Edmonton City Centre</b>							
Domestic	5,287	1,624	526	1,366	1,306	379	86
Transborder	36	9	11	0	15	1	0
Other international	0	0	0	0	0	0	0
<b>Total</b>	<b>5,323</b>	<b>1,633</b>	<b>537</b>	<b>1,366</b>	<b>1,321</b>	<b>380</b>	<b>86</b>
<b>Edmonton International</b>							
Domestic	8,801	7,935	367	202	229	21	47
Transborder	1,161	1,075	7	2	77	0	0
Other international	163	163	0	0	0	0	0
<b>Total</b>	<b>10,125</b>	<b>9,173</b>	<b>374</b>	<b>204</b>	<b>306</b>	<b>21</b>	<b>47</b>
<b>Edmonton/Villeneuve</b>							
Domestic	1,185	10	268	684	200	0	23
Transborder	1	0	0	0	1	0	0
Other international	0	0	0	0	0	0	0
<b>Total</b>	<b>1,186</b>	<b>10</b>	<b>268</b>	<b>684</b>	<b>201</b>	<b>0</b>	<b>23</b>
<b>Gander International</b>							
Domestic	1,673	294	1,048	22	149	41	119
Transborder	294	112	1	10	130	3	38
Other international	363	158	2	14	142	3	44
<b>Total</b>	<b>2,330</b>	<b>564</b>	<b>1,051</b>	<b>46</b>	<b>421</b>	<b>47</b>	<b>201</b>
<b>Halifax/Robert L Stanfield International</b>							
Domestic	4,782	3,946	347	36	213	78	162
Transborder	988	809	64	4	91	0	20
Other international	360	164	154	11	18	2	11
<b>Total</b>	<b>6,130</b>	<b>4,919</b>	<b>565</b>	<b>51</b>	<b>322</b>	<b>80</b>	<b>193</b>
<b>Hamilton</b>							
Domestic	2,740	1,450	736	75	301	156	22
Transborder	544	378	7	0	158	1	0
Other international	25	22	0	0	3	0	0
<b>Total</b>	<b>3,309</b>	<b>1,850</b>	<b>743</b>	<b>75</b>	<b>462</b>	<b>157</b>	<b>22</b>



Table 7-1 – continued

## Itinerant movements, domestic, transborder and international — NAV CANADA towers

	Total	Air carrier movements		Other commercial movements	Private movements	Government movements	
		Levels I to III and foreign	Levels IV to VI			Civil	Military
	number						
<b>Kelowna</b>							
Domestic	3,570	2,106	288	664	402	92	18
Transborder	289	242	4	7	36	0	0
Other international	3	3	0	0	0	0	0
<b>Total</b>	<b>3,862</b>	<b>2,351</b>	<b>292</b>	<b>671</b>	<b>438</b>	<b>92</b>	<b>18</b>
<b>Kitchener/Waterloo</b>							
Domestic	3,089	247	1,578	603	646	5	10
Transborder	392	209	45	7	129	0	2
Other international	2	1	0	0	1	0	0
<b>Total</b>	<b>3,483</b>	<b>457</b>	<b>1,623</b>	<b>610</b>	<b>776</b>	<b>5</b>	<b>12</b>
<b>Langley</b>							
Domestic	3,322	115	138	1,777	1,257	14	21
Transborder	1	0	0	0	1	0	0
Other international	0	0	0	0	0	0	0
<b>Total</b>	<b>3,323</b>	<b>115</b>	<b>138</b>	<b>1,777</b>	<b>1,258</b>	<b>14</b>	<b>21</b>
<b>London</b>							
Domestic	4,019	902	901	1,367	791	56	2
Transborder	389	254	6	7	121	1	0
Other international	0	0	0	0	0	0	0
<b>Total</b>	<b>4,408</b>	<b>1,156</b>	<b>907</b>	<b>1,374</b>	<b>912</b>	<b>57</b>	<b>2</b>
<b>Moncton/Greater Moncton International</b>							
Domestic	5,038	1,638	2,553	374	306	163	4
Transborder	40	38	0	0	2	0	0
Other international	5	4	0	0	0	1	0
<b>Total</b>	<b>5,083</b>	<b>1,680</b>	<b>2,553</b>	<b>374</b>	<b>308</b>	<b>164</b>	<b>4</b>
<b>Montréal/Mirabel International</b>							
Domestic	1,442	634	262	21	412	12	101
Transborder	229	222	0	0	6	0	1
Other international	7	6	0	0	1	0	0
<b>Total</b>	<b>1,678</b>	<b>862</b>	<b>262</b>	<b>21</b>	<b>419</b>	<b>12</b>	<b>102</b>
<b>Montréal/Pierre Elliott Trudeau International</b>							
Domestic	10,393	8,455	650	302	788	176	22
Transborder	5,861	5,179	68	56	555	0	3
Other international	1,476	1,364	19	25	63	2	3
<b>Total</b>	<b>17,730</b>	<b>14,998</b>	<b>737</b>	<b>383</b>	<b>1,406</b>	<b>178</b>	<b>28</b>
<b>Montréal/St-Hubert</b>							
Domestic	5,370	2,022	523	1,442	1,195	74	114
Transborder	195	30	5	6	152	0	2
Other international	1	0	0	0	1	0	0
<b>Total</b>	<b>5,566</b>	<b>2,052</b>	<b>528</b>	<b>1,448</b>	<b>1,348</b>	<b>74</b>	<b>116</b>
<b>Oshawa</b>							
Domestic	1,876	119	82	1,041	627	4	3
Transborder	28	6	0	1	20	0	1
Other international	1	0	1	0	0	0	0
<b>Total</b>	<b>1,905</b>	<b>125</b>	<b>83</b>	<b>1,042</b>	<b>647</b>	<b>4</b>	<b>4</b>
<b>Ottawa/Macdonald-Cartier International</b>							
Domestic	8,601	5,053	348	2,218	367	434	181
Transborder	2,219	2,081	31	3	81	14	9
Other international	138	115	2	2	7	1	11
<b>Total</b>	<b>10,958</b>	<b>7,249</b>	<b>381</b>	<b>2,223</b>	<b>455</b>	<b>449</b>	<b>201</b>
<b>Pitt Meadows</b>							
Domestic	3,230	38	907	973	1,293	12	7
Transborder	3	0	0	0	3	0	0
Other international	0	0	0	0	0	0	0
<b>Total</b>	<b>3,233</b>	<b>38</b>	<b>907</b>	<b>973</b>	<b>1,296</b>	<b>12</b>	<b>7</b>

Table 7-1 – continued

## Itinerant movements, domestic, transborder and international — NAV CANADA towers

	Total	Air carrier movements		Other commercial movements	Private movements	Government movements	
		Levels I to III and foreign	Levels IV to VI			Civil	Military
	number						
<b>Prince George</b>							
Domestic	2,213	1,306	498	195	182	30	2
Transborder	8	0	3	0	5	0	0
Other international	0	0	0	0	0	0	0
<b>Total</b>	<b>2,221</b>	<b>1,306</b>	<b>501</b>	<b>195</b>	<b>187</b>	<b>30</b>	<b>2</b>
<b>Québec/Jean Lesage International</b>							
Domestic	6,524	3,374	602	1,330	678	367	173
Transborder	480	432	2	6	37	1	2
Other international	44	38	0	1	2	0	3
<b>Total</b>	<b>7,048</b>	<b>3,844</b>	<b>604</b>	<b>1,337</b>	<b>717</b>	<b>368</b>	<b>178</b>
<b>Regina International</b>							
Domestic	3,107	1,911	437	67	302	170	220
Transborder	180	128	3	0	45	1	3
Other international	1	1	0	0	0	0	0
<b>Total</b>	<b>3,288</b>	<b>2,040</b>	<b>440</b>	<b>67</b>	<b>347</b>	<b>171</b>	<b>223</b>
<b>Saskatoon/John G Diefenbaker International</b>							
Domestic	4,885	2,835	861	364	383	284	158
Transborder	177	137	0	2	37	1	0
Other international	3	1	0	0	2	0	0
<b>Total</b>	<b>5,065</b>	<b>2,973</b>	<b>861</b>	<b>366</b>	<b>422</b>	<b>285</b>	<b>158</b>
<b>Sault Ste. Marie</b>							
Domestic	1,762	792	166	637	93	35	39
Transborder	23	0	2	1	20	0	0
Other international	0	0	0	0	0	0	0
<b>Total</b>	<b>1,785</b>	<b>792</b>	<b>168</b>	<b>638</b>	<b>113</b>	<b>35</b>	<b>39</b>
<b>St. John's International</b>							
Domestic	2,437	1,095	1,053	54	46	163	26
Transborder	164	60	1	6	30	0	67
Other international	185	58	4	19	28	2	74
<b>Total</b>	<b>2,786</b>	<b>1,213</b>	<b>1,058</b>	<b>79</b>	<b>104</b>	<b>165</b>	<b>167</b>
<b>St-Jean</b>							
Domestic	821	145	122	237	250	4	63
Transborder	2	0	0	0	2	0	0
Other international	0	0	0	0	0	0	0
<b>Total</b>	<b>823</b>	<b>145</b>	<b>122</b>	<b>237</b>	<b>252</b>	<b>4</b>	<b>63</b>
<b>Sudbury</b>							
Domestic	2,134	1,436	459	45	144	32	18
Transborder	10	3	0	0	7	0	0
Other international	1	0	0	0	1	0	0
<b>Total</b>	<b>2,145</b>	<b>1,439</b>	<b>459</b>	<b>45</b>	<b>152</b>	<b>32</b>	<b>18</b>
<b>Thunder Bay</b>							
Domestic	5,027	3,078	616	928	169	139	97
Transborder	167	130	5	2	28	0	2
Other international	0	0	0	0	0	0	0
<b>Total</b>	<b>5,194</b>	<b>3,208</b>	<b>621</b>	<b>930</b>	<b>197</b>	<b>139</b>	<b>99</b>
<b>Toronto/Buttontville Municipal</b>							
Domestic	6,099	334	800	3,472	1,440	52	1
Transborder	292	90	45	21	136	0	0
Other international	1	0	0	0	1	0	0
<b>Total</b>	<b>6,392</b>	<b>424</b>	<b>845</b>	<b>3,493</b>	<b>1,577</b>	<b>52</b>	<b>1</b>
<b>Toronto/City Centre</b>							
Domestic	3,537	1,092	762	1,223	384	50	26
Transborder	155	13	14	1	123	2	2
Other international	0	0	0	0	0	0	0
<b>Total</b>	<b>3,692</b>	<b>1,105</b>	<b>776</b>	<b>1,224</b>	<b>507</b>	<b>52</b>	<b>28</b>

Table 7-1 – continued

## Itinerant movements, domestic, transborder and international — NAV CANADA towers

	Total	Air carrier movements		Other commercial movements	Private movements	Government movements	
		Levels I to III and foreign	Levels IV to VI			Civil	Military
number							
<b>Toronto/Lester B Pearson International</b>							
Domestic	15,015	14,059	320	116	450	38	32
Transborder	15,150	13,932	121	100	991	3	3
Other international	3,554	3,481	18	19	36	0	0
<b>Total</b>	<b>33,719</b>	<b>31,472</b>	<b>459</b>	<b>235</b>	<b>1,477</b>	<b>41</b>	<b>35</b>
<b>Vancouver Harbour</b>							
Domestic	4,099	3,749	85	160	103	0	2
Transborder	53	37	8	2	6	0	0
Other international	0	0	0	0	0	0	0
<b>Total</b>	<b>4,152</b>	<b>3,786</b>	<b>93</b>	<b>162</b>	<b>109</b>	<b>0</b>	<b>2</b>
<b>Vancouver International</b>							
Domestic	18,815	16,541	1,232	302	455	261	24
Transborder	4,786	4,453	26	12	294	0	1
Other international	1,488	1,390	76	5	16	1	0
<b>Total</b>	<b>25,089</b>	<b>22,384</b>	<b>1,334</b>	<b>319</b>	<b>765</b>	<b>262</b>	<b>25</b>
<b>Victoria International</b>							
Domestic	6,298	2,617	1,981	577	993	75	55
Transborder	566	352	35	19	154	0	6
Other international	64	5	25	11	23	0	0
<b>Total</b>	<b>6,928</b>	<b>2,974</b>	<b>2,041</b>	<b>607</b>	<b>1,170</b>	<b>75</b>	<b>61</b>
<b>Whitehorse International</b>							
Domestic	1,183	624	341	18	163	26	11
Transborder	27	11	1	0	12	2	1
Other international	5	2	0	2	1	0	0
<b>Total</b>	<b>1,215</b>	<b>637</b>	<b>342</b>	<b>20</b>	<b>176</b>	<b>28</b>	<b>12</b>
<b>Windsor</b>							
Domestic	1,454	474	695	63	210	8	4
Transborder	122	45	20	0	53	0	4
Other international	2	0	0	0	2	0	0
<b>Total</b>	<b>1,578</b>	<b>519</b>	<b>715</b>	<b>63</b>	<b>265</b>	<b>8</b>	<b>8</b>
<b>Winnipeg/James Armstrong Richardson International</b>							
Domestic	10,090	8,036	800	110	260	321	563
Transborder	1,140	1,021	13	10	81	5	10
Other international	6	3	0	0	3	0	0
<b>Total</b>	<b>11,236</b>	<b>9,060</b>	<b>813</b>	<b>120</b>	<b>344</b>	<b>326</b>	<b>573</b>
<b>Winnipeg/St. Andrews</b>							
Domestic	3,307	468	1,782	770	263	10	14
Transborder	6	1	0	1	4	0	0
Other international	0	0	0	0	0	0	0
<b>Total</b>	<b>3,313</b>	<b>469</b>	<b>1,782</b>	<b>771</b>	<b>267</b>	<b>10</b>	<b>14</b>
<b>Yellowknife</b>							
Domestic	4,145	3,298	620	27	109	45	46
Transborder	4	2	0	0	2	0	0
Other international	1	0	0	0	1	0	0
<b>Total</b>	<b>4,150</b>	<b>3,300</b>	<b>620</b>	<b>27</b>	<b>112</b>	<b>45</b>	<b>46</b>
<b>Total of NAV CANADA towers (42)</b>							
Domestic	213,089	117,663	32,255	34,324	21,955	4,236	2,656
Transborder	39,645	34,384	665	377	3,995	36	188
Other international	8,353	7,408	304	110	363	12	156
<b>Total</b>	<b>261,087</b>	<b>159,455</b>	<b>33,224</b>	<b>34,811</b>	<b>26,313</b>	<b>4,284</b>	<b>3,000</b>

**Table 7-2**  
**Itinerant movements, domestic, transborder and international — NAV CANADA flight service stations**

	Total	Air carrier movements		Other commercial movements	Private movements	Government movements	
		Levels I to III and foreign	Levels IV to VI			Civil	Military
number							
<b>Brandon Municipal</b>							
Domestic	661	146	247	53	111	11	93
Transborder	6	3	0	0	3	0	0
Other international	0	0	0	0	0	0	0
<b>Total</b>	<b>667</b>	<b>149</b>	<b>247</b>	<b>53</b>	<b>114</b>	<b>11</b>	<b>93</b>
<b>Campbell River</b>							
Domestic	1,475	635	279	197	320	30	14
Transborder	19	0	1	0	18	0	0
Other international	0	0	0	0	0	0	0
<b>Total</b>	<b>1,494</b>	<b>635</b>	<b>280</b>	<b>197</b>	<b>338</b>	<b>30</b>	<b>14</b>
<b>Castlegar</b>							
Domestic	550	286	40	167	41	2	14
Transborder	4	3	0	1	0	0	0
Other international	0	0	0	0	0	0	0
<b>Total</b>	<b>554</b>	<b>289</b>	<b>40</b>	<b>168</b>	<b>41</b>	<b>2</b>	<b>14</b>
<b>Charlottetown</b>							
Domestic	1,050	532	47	373	47	43	8
Transborder	4	1	0	0	3	0	0
Other international	1	1	0	0	0	0	0
<b>Total</b>	<b>1,055</b>	<b>534</b>	<b>47</b>	<b>373</b>	<b>50</b>	<b>43</b>	<b>8</b>
<b>Churchill</b>							
Domestic	828	737	79	1	3	8	0
Transborder	10	7	0	1	2	0	0
Other international	0	0	0	0	0	0	0
<b>Total</b>	<b>838</b>	<b>744</b>	<b>79</b>	<b>2</b>	<b>5</b>	<b>8</b>	<b>0</b>
<b>Cranbrook</b>							
Domestic	755	525	67	41	104	8	10
Transborder	7	2	0	0	5	0	0
Other international	0	0	0	0	0	0	0
<b>Total</b>	<b>762</b>	<b>527</b>	<b>67</b>	<b>41</b>	<b>109</b>	<b>8</b>	<b>10</b>
<b>Deer Lake</b>							
Domestic	1,411	699	639	16	17	28	12
Transborder	1	0	0	0	1	0	0
Other international	0	0	0	0	0	0	0
<b>Total</b>	<b>1,412</b>	<b>699</b>	<b>639</b>	<b>16</b>	<b>18</b>	<b>28</b>	<b>12</b>
<b>Fort McMurray</b>							
Domestic	4,029	2,587	643	334	396	59	10
Transborder	4	1	0	0	3	0	0
Other international	0	0	0	0	0	0	0
<b>Total</b>	<b>4,033</b>	<b>2,588</b>	<b>643</b>	<b>334</b>	<b>399</b>	<b>59</b>	<b>10</b>
<b>Fort Nelson</b>							
Domestic	1,044	328	298	328	88	2	0
Transborder	0	0	0	0	0	0	0
Other international	0	0	0	0	0	0	0
<b>Total</b>	<b>1,044</b>	<b>328</b>	<b>298</b>	<b>328</b>	<b>88</b>	<b>2</b>	<b>0</b>
<b>Fort St John</b>							
Domestic	1,541	768	479	126	156	6	6
Transborder	0	0	0	0	0	0	0
Other international	0	0	0	0	0	0	0
<b>Total</b>	<b>1,541</b>	<b>768</b>	<b>479</b>	<b>126</b>	<b>156</b>	<b>6</b>	<b>6</b>
<b>Fredericton International</b>							
Domestic	2,184	723	522	30	683	116	110
Transborder	129	115	2	0	10	2	0
Other international	0	0	0	0	0	0	0
<b>Total</b>	<b>2,313</b>	<b>838</b>	<b>524</b>	<b>30</b>	<b>693</b>	<b>118</b>	<b>110</b>

Table 7-2 – continued

## Itinerant movements, domestic, transborder and international — NAV CANADA flight service stations

	Total	Air carrier movements		Other commercial movements	Private movements	Government movements	
		Levels I to III and foreign	Levels IV to VI			Civil	Military
number							
<b>Grande Prairie</b>							
Domestic	2,374	1,285	541	82	434	30	2
Transborder	7	1	0	0	6	0	0
Other international	0	0	0	0	0	0	0
<b>Total</b>	<b>2,381</b>	<b>1,286</b>	<b>541</b>	<b>82</b>	<b>440</b>	<b>30</b>	<b>2</b>
<b>High Level</b>							
Domestic	625	219	147	210	35	12	2
Transborder	0	0	0	0	0	0	0
Other international	0	0	0	0	0	0	0
<b>Total</b>	<b>625</b>	<b>219</b>	<b>147</b>	<b>210</b>	<b>35</b>	<b>12</b>	<b>2</b>
<b>Îles-de-la-Madeleine</b>							
Domestic	320	276	0	4	2	30	8
Transborder	0	0	0	0	0	0	0
Other international	4	4	0	0	0	0	0
<b>Total</b>	<b>324</b>	<b>280</b>	<b>0</b>	<b>4</b>	<b>2</b>	<b>30</b>	<b>8</b>
<b>Inuvik/Mike Zubko</b>							
Domestic	1,519	549	880	1	7	32	50
Transborder	6	4	0	0	0	0	2
Other international	1	0	0	1	0	0	0
<b>Total</b>	<b>1,526</b>	<b>553</b>	<b>880</b>	<b>2</b>	<b>7</b>	<b>32</b>	<b>52</b>
<b>Iqaluit</b>							
Domestic	1,260	956	45	62	28	160	9
Transborder	26	8	5	1	12	0	0
Other international	64	24	0	8	27	0	5
<b>Total</b>	<b>1,350</b>	<b>988</b>	<b>50</b>	<b>71</b>	<b>67</b>	<b>160</b>	<b>14</b>
<b>Kamloops</b>							
Domestic	1,852	1,136	248	134	219	48	67
Transborder	7	4	0	1	2	0	0
Other international	0	0	0	0	0	0	0
<b>Total</b>	<b>1,859</b>	<b>1,140</b>	<b>248</b>	<b>135</b>	<b>221</b>	<b>48</b>	<b>67</b>
<b>Kenora</b>							
Domestic	759	360	298	23	36	15	27
Transborder	6	0	0	0	5	0	1
Other international	0	0	0	0	0	0	0
<b>Total</b>	<b>765</b>	<b>360</b>	<b>298</b>	<b>23</b>	<b>41</b>	<b>15</b>	<b>28</b>
<b>Kingston</b>							
Domestic	1,573	543	273	386	269	47	55
Transborder	31	4	0	0	27	0	0
Other international	0	0	0	0	0	0	0
<b>Total</b>	<b>1,604</b>	<b>547</b>	<b>273</b>	<b>386</b>	<b>296</b>	<b>47</b>	<b>55</b>
<b>Kuujuuaq</b>							
Domestic	873	778	27	6	24	38	0
Transborder	0	0	0	0	0	0	0
Other international	1	1	0	0	0	0	0
<b>Total</b>	<b>874</b>	<b>779</b>	<b>27</b>	<b>6</b>	<b>24</b>	<b>38</b>	<b>0</b>
<b>Kuujuuarapik</b>							
Domestic	535	511	18	2	0	4	0
Transborder	0	0	0	0	0	0	0
Other international	0	0	0	0	0	0	0
<b>Total</b>	<b>535</b>	<b>511</b>	<b>18</b>	<b>2</b>	<b>0</b>	<b>4</b>	<b>0</b>
<b>La Grande Rivière</b>							
Domestic	748	553	154	5	22	14	0
Transborder	0	0	0	0	0	0	0
Other international	0	0	0	0	0	0	0
<b>Total</b>	<b>748</b>	<b>553</b>	<b>154</b>	<b>5</b>	<b>22</b>	<b>14</b>	<b>0</b>
<b>La Ronge</b>							
Domestic	1,176	1,027	9	62	15	61	2
Transborder	1	0	0	0	1	0	0
Other international	0	0	0	0	0	0	0
<b>Total</b>	<b>1,177</b>	<b>1,027</b>	<b>9</b>	<b>62</b>	<b>16</b>	<b>61</b>	<b>2</b>

Table 7-2 – continued

## Itinerant movements, domestic, transborder and international — NAV CANADA flight service stations

	Total	Air carrier movements		Other commercial movements	Private movements	Government movements	
		Levels I to III and foreign	Levels IV to VI			Civil	Military
number							
<b>Lethbridge</b>							
Domestic	1,501	593	30	566	280	14	18
Transborder	84	9	5	0	66	2	2
Other international	0	0	0	0	0	0	0
<b>Total</b>	<b>1,585</b>	<b>602</b>	<b>35</b>	<b>566</b>	<b>346</b>	<b>16</b>	<b>20</b>
<b>Lloydminster</b>							
Domestic	689	140	246	71	210	18	4
Transborder	4	0	0	0	4	0	0
Other international	0	0	0	0	0	0	0
<b>Total</b>	<b>693</b>	<b>140</b>	<b>246</b>	<b>71</b>	<b>214</b>	<b>18</b>	<b>4</b>
<b>Medicine Hat</b>							
Domestic	1,032	718	43	38	192	17	24
Transborder	15	1	1	0	13	0	0
Other international	0	0	0	0	0	0	0
<b>Total</b>	<b>1,047</b>	<b>719</b>	<b>44</b>	<b>38</b>	<b>205</b>	<b>17</b>	<b>24</b>
<b>Mont-Joli</b>							
Domestic	476	435	4	12	7	18	0
Transborder	1	0	0	0	1	0	0
Other international	0	0	0	0	0	0	0
<b>Total</b>	<b>477</b>	<b>435</b>	<b>4</b>	<b>12</b>	<b>8</b>	<b>18</b>	<b>0</b>
<b>Nanaimo</b>							
Domestic	1,634	439	424	166	544	52	9
Transborder	18	1	0	0	17	0	0
Other international	0	0	0	0	0	0	0
<b>Total</b>	<b>1,652</b>	<b>440</b>	<b>424</b>	<b>166</b>	<b>561</b>	<b>52</b>	<b>9</b>
<b>Norman Wells</b>							
Domestic	1,269	707	400	51	93	12	6
Transborder	0	0	0	0	0	0	0
Other international	0	0	0	0	0	0	0
<b>Total</b>	<b>1,269</b>	<b>707</b>	<b>400</b>	<b>51</b>	<b>93</b>	<b>12</b>	<b>6</b>
<b>North Bay</b>							
Domestic	1,565	538	390	358	210	32	37
Transborder	15	0	3	1	10	0	1
Other international	0	0	0	0	0	0	0
<b>Total</b>	<b>1,580</b>	<b>538</b>	<b>393</b>	<b>359</b>	<b>220</b>	<b>32</b>	<b>38</b>
<b>Ottawa/Gatineau</b>							
Domestic	1,010	153	253	132	399	55	18
Transborder	6	0	1	1	4	0	0
Other international	0	0	0	0	0	0	0
<b>Total</b>	<b>1,016</b>	<b>153</b>	<b>254</b>	<b>133</b>	<b>403</b>	<b>55</b>	<b>18</b>
<b>Peace River</b>							
Domestic	617	434	87	6	68	20	2
Transborder	0	0	0	0	0	0	0
Other international	0	0	0	0	0	0	0
<b>Total</b>	<b>617</b>	<b>434</b>	<b>87</b>	<b>6</b>	<b>68</b>	<b>20</b>	<b>2</b>
<b>Penticton</b>							
Domestic	1,336	496	477	46	219	52	46
Transborder	14	1	0	0	13	0	0
Other international	0	0	0	0	0	0	0
<b>Total</b>	<b>1,350</b>	<b>497</b>	<b>477</b>	<b>46</b>	<b>232</b>	<b>52</b>	<b>46</b>
<b>Port Hardy</b>							
Domestic	625	447	64	16	17	73	8
Transborder	10	0	0	0	10	0	0
Other international	0	0	0	0	0	0	0
<b>Total</b>	<b>635</b>	<b>447</b>	<b>64</b>	<b>16</b>	<b>27</b>	<b>73</b>	<b>8</b>

Table 7-2 – continued

## Itinerant movements, domestic, transborder and international — NAV CANADA flight service stations

	Total	Air carrier movements		Other commercial movements	Private movements	Government movements	
		Levels I to III and foreign	Levels IV to VI			Civil	Military
number							
<b>Prince Albert</b>							
Domestic	1,415	1,137	26	87	71	80	14
Transborder	6	0	0	0	6	0	0
Other international	0	0	0	0	0	0	0
<b>Total</b>	<b>1,421</b>	<b>1,137</b>	<b>26</b>	<b>87</b>	<b>77</b>	<b>80</b>	<b>14</b>
<b>Prince Rupert</b>							
Domestic	346	197	114	6	3	26	0
Transborder	4	1	0	0	3	0	0
Other international	0	0	0	0	0	0	0
<b>Total</b>	<b>350</b>	<b>198</b>	<b>114</b>	<b>6</b>	<b>6</b>	<b>26</b>	<b>0</b>
<b>Rankin Inlet</b>							
Domestic	1,202	954	222	2	4	18	2
Transborder	0	0	0	0	0	0	0
Other international	1	0	1	0	0	0	0
<b>Total</b>	<b>1,203</b>	<b>954</b>	<b>223</b>	<b>2</b>	<b>4</b>	<b>18</b>	<b>2</b>
<b>Red Deer Regional</b>							
Domestic	1,921	400	691	233	556	29	12
Transborder	11	0	2	0	9	0	0
Other international	0	0	0	0	0	0	0
<b>Total</b>	<b>1,932</b>	<b>400</b>	<b>693</b>	<b>233</b>	<b>565</b>	<b>29</b>	<b>12</b>
<b>Rouyn-Noranda</b>							
Domestic	962	600	133	62	147	20	0
Transborder	0	0	0	0	0	0	0
Other international	0	0	0	0	0	0	0
<b>Total</b>	<b>962</b>	<b>600</b>	<b>133</b>	<b>62</b>	<b>147</b>	<b>20</b>	<b>0</b>
<b>Saint John</b>							
Domestic	1,255	711	173	100	222	4	45
Transborder	89	5	1	1	82	0	0
Other international	4	2	0	0	2	0	0
<b>Total</b>	<b>1,348</b>	<b>718</b>	<b>174</b>	<b>101</b>	<b>306</b>	<b>4</b>	<b>45</b>
<b>Sept-Îles</b>							
Domestic	1,859	1,227	465	44	65	58	0
Transborder	5	0	0	0	5	0	0
Other international	0	0	0	0	0	0	0
<b>Total</b>	<b>1,864</b>	<b>1,227</b>	<b>465</b>	<b>44</b>	<b>70</b>	<b>58</b>	<b>0</b>
<b>Sioux Lookout</b>							
Domestic	2,487	2,117	271	54	34	11	0
Transborder	0	0	0	0	0	0	0
Other international	0	0	0	0	0	0	0
<b>Total</b>	<b>2,487</b>	<b>2,117</b>	<b>271</b>	<b>54</b>	<b>34</b>	<b>11</b>	<b>0</b>
<b>Smithers</b>							
Domestic	650	495	75	27	47	4	2
Transborder	1	0	0	0	1	0	0
Other international	0	0	0	0	0	0	0
<b>Total</b>	<b>651</b>	<b>495</b>	<b>75</b>	<b>27</b>	<b>48</b>	<b>4</b>	<b>2</b>
<b>St Anthony</b>							
Domestic	293	51	187	44	0	3	8
Transborder	0	0	0	0	0	0	0
Other international	0	0	0	0	0	0	0
<b>Total</b>	<b>293</b>	<b>51</b>	<b>187</b>	<b>44</b>	<b>0</b>	<b>3</b>	<b>8</b>
<b>St Catharines</b>							
Domestic	819	7	393	33	258	8	120
Transborder	33	3	1	0	29	0	0
Other international	0	0	0	0	0	0	0
<b>Total</b>	<b>852</b>	<b>10</b>	<b>394</b>	<b>33</b>	<b>287</b>	<b>8</b>	<b>120</b>

Table 7-2 – continued

## Itinerant movements, domestic, transborder and international — NAV CANADA flight service stations

	Total	Air carrier movements		Other commercial movements	Private movements	Government movements	
		Levels I to III and foreign	Levels IV to VI			Civil	Military
	number						
<b>Terrace</b>							
Domestic	1,312	675	564	23	44	6	0
Transborder	2	0	0	0	2	0	0
Other international	0	0	0	0	0	0	0
<b>Total</b>	<b>1,314</b>	<b>675</b>	<b>564</b>	<b>23</b>	<b>46</b>	<b>6</b>	<b>0</b>
<b>Thompson</b>							
Domestic	2,727	2,207	284	29	18	189	0
Transborder	1	0	0	0	1	0	0
Other international	0	0	0	0	0	0	0
<b>Total</b>	<b>2,728</b>	<b>2,207</b>	<b>284</b>	<b>29</b>	<b>19</b>	<b>189</b>	<b>0</b>
<b>Timmins</b>							
Domestic	2,097	1,732	245	18	84	16	2
Transborder	4	2	2	0	0	0	0
Other international	0	0	0	0	0	0	0
<b>Total</b>	<b>2,101</b>	<b>1,734</b>	<b>247</b>	<b>18</b>	<b>84</b>	<b>16</b>	<b>2</b>
<b>Val-D'or</b>							
Domestic	922	662	42	24	166	26	2
Transborder	0	0	0	0	0	0	0
Other international	0	0	0	0	0	0	0
<b>Total</b>	<b>922</b>	<b>662</b>	<b>42</b>	<b>24</b>	<b>166</b>	<b>26</b>	<b>2</b>
<b>Victoria Harbour</b>							
Domestic	2,781	2,674	31	2	6	66	2
Transborder	217	0	1	0	216	0	0
Other international	0	0	0	0	0	0	0
<b>Total</b>	<b>2,998</b>	<b>2,674</b>	<b>32</b>	<b>2</b>	<b>222</b>	<b>66</b>	<b>2</b>
<b>Wabush</b>							
Domestic	591	285	252	6	24	14	10
Transborder	0	0	0	0	0	0	0
Other international	0	0	0	0	0	0	0
<b>Total</b>	<b>591</b>	<b>285</b>	<b>252</b>	<b>6</b>	<b>24</b>	<b>14</b>	<b>10</b>
<b>Whitecourt</b>							
Domestic	842	56	447	265	62	10	2
Transborder	0	0	0	0	0	0	0
Other international	0	0	0	0	0	0	0
<b>Total</b>	<b>842</b>	<b>56</b>	<b>447</b>	<b>265</b>	<b>62</b>	<b>10</b>	<b>2</b>
<b>Williams Lake</b>							
Domestic	684	417	127	49	78	8	5
Transborder	0	0	0	0	0	0	0
Other international	0	0	0	0	0	0	0
<b>Total</b>	<b>684</b>	<b>417</b>	<b>127</b>	<b>49</b>	<b>78</b>	<b>8</b>	<b>5</b>
<b>Total of all flight service stations (53)</b>							
Domestic	66,061	37,863	13,140	5,213	7,185	1,763	897
Transborder	808	176	25	7	590	4	6
Other international	76	32	1	9	29	0	5
<b>Total</b>	<b>66,945</b>	<b>38,071</b>	<b>13,166</b>	<b>5,229</b>	<b>7,804</b>	<b>1,767</b>	<b>908</b>



**Table 8-1**  
**Total aircraft movements, peak hour and peak day — NAV CANADA towers**

	Rank of movements	Number of movements	Peak hour occurrence			Peak day occurrence	
			Day in month	Hour in day	Number of movements	Day in month	Number of movements
Abbotsford	7	14,856	29	14	127	13	803
Boundary Bay	9	14,570	21	13	125	13	923
Calgary International	3	20,346	17	12	72	14	818
Calgary/Springbank	5	16,984	8	13	146	14	919
Chicoutimi/St-Honoré	29	4,960	19	14	106	9	555
Edmonton City Centre	23	7,295	20	17	73	8	373
Edmonton International	13	10,595	15	10	66	1	474
Edmonton/Villeneuve	28	5,216	28	11	85	10	349
Gander International	35	4,042	30	14	52	5	310
Halifax/Robert L Stanfield International	25	6,716	17	11	44	14	324
Hamilton	30	4,714	17	12	51	2	306
Kelowna	24	6,828	16	10	80	16	420
Kitchener/Waterloo	21	8,139	20	14	94	13	629
Langley	20	9,073	20	15	97	1	513
London	18	9,281	20	15	104	20	675
Moncton/Greater Moncton International	19	9,239	8	12	58	2	567
Montréal/Mirabel International	40	2,079	9	15	42	9	125
Montréal/Pierre Elliott Trudeau International	4	17,730	2	18	65	28	681
Montréal/St-Hubert	10	12,560	19	16	129	9	826
Oshawa	31	4,673	13	15	70	13	501
Ottawa/Macdonald-Cartier International	8	14,806	9	11	80	2	716
Pitt Meadows	15	9,731	23	13	135	10	642
Prince George	32	4,311	20	15	89	21	378
Québec/Jean Lesage International	16	9,560	28	13	79	2	503
Regina International	33	4,243	24	13	52	10	269
Saskatoon/John G Diefenbaker International	22	7,539	7	16	62	22	427
Sault Ste. Marie	36	3,435	11	18	80	13	343
St. John's International	37	2,964	1	9	30	1	215
St-Jean	42	1,211	2	15	29	4	102
Sudbury	39	2,442	10	14	32	23	170
Thunder Bay	17	9,489	12	19	94	1	746
Toronto/Buttonville Municipal	6	15,056	10	12	117	2	988
Toronto/City Centre	26	6,420	10	12	85	3	408
Toronto/Lester B Pearson International	1	33,719	9	18	95	9	1,267
Vancouver Harbour	34	4,156	21	8	37	1	192
Vancouver International	2	25,089	22	8	79	30	988
Victoria International	12	11,936	30	12	80	30	635
Whitehorse International	41	1,929	17	15	42	17	119
Windsor	38	2,780	3	13	39	1	166
Winnipeg/James Armstrong Richardson International	11	12,019	27	11	63	1	524
Winnipeg/St. Andrews	14	10,565	26	10	108	9	622
Yellowknife	27	5,384	16	15	63	16	335

**Table 8-2**  
**Total aircraft movements, peak hour and peak day — NAV CANADA flight service stations**

	Rank of movements	Number of movements	Peak hour occurrence			Peak day occurrence	
			Day in month	Hour in day	Number of movements	Day in month	Number of movements
Brandon Municipal	30	1,383	6	10	31	21	140
Campbell River	6	3,168	1	13	58	22	229
Castlegar	37	954	9	12	46	30	85
Charlottetown	20	1,959	19	18	39	6	165
Churchill	40	838	8	11	9	8	53
Cranbrook	39	894	14	12	18	14	57
Deer Lake	25	1,589	25	9	26	29	85
Fort McMurray	1	4,417	5	14	34	5	227
Fort Nelson	35	1,120	22	11	35	22	93
Fort St John	22	1,755	8	15	20	14	93
Fredericton International	2	4,364	21	16	44	8	304
Grande Prairie	5	3,319	21	18	45	14	221
High Level	46	629	29	13	10	14	49
Îles-de-la-Madeleine	52	324	2	6	4	28	18
Inuvik/Mike Zubko	24	1,622	18	14	17	21	83
Iqaluit	27	1,518	2	9	28	2	89
Kamloops	14	2,365	21	14	36	21	164
Kenora	41	811	3	17	17	3	57
Kingston	12	2,650	2	15	36	3	179
Kuujuuaq	38	934	4	11	11	12	42
Kuujuuarapik	49	535	2	11	6	2	31
La Grande Rivière	42	756	2	13	9	2	42
La Ronge	31	1,209	3	14	15	28	71
Lethbridge	9	2,797	16	9	44	20	191
Lloydminster	36	1,069	30	14	28	22	98
Medicine Hat	23	1,640	22	15	29	29	98
Mont-Joli	51	477	19	8	6	30	27
Nanaimo	16	2,202	4	11	38	4	221
Norman Wells	15	2,225	7	10	24	7	118
North Bay	3	4,168	9	15	100	2	346
Ottawa/Gatineau	17	2,190	28	10	49	28	201
Peace River	48	621	15	11	16	15	46
Penticton	7	3,096	27	15	85	14	306
Port Hardy	45	641	30	13	8	16	39
Prince Albert	28	1,513	24	11	20	1	108
Prince Rupert	50	490	23	14	27	19	54
Rankin Inlet	33	1,205	30	14	15	30	76
Red Deer Regional	4	3,494	15	16	50	15	235
Rouyn-Noranda	34	1,188	11	16	36	11	98
Saint John	26	1,550	21	15	36	21	141
Sept-Îles	21	1,932	17	14	25	19	96
Sioux Lookout	11	2,657	30	14	31	21	146
Smithers	44	673	20	17	13	8	39
St Anthony	53	293	2	14	6	5	24
St Catharines	19	1,964	11	14	50	3	228
Terrace	29	1,481	12	15	38	12	112
Thompson	10	2,742	8	11	19	8	139
Timmins	18	2,159	18	16	17	15	106
Val-D'or	32	1,208	3	14	25	19	106
Victoria Harbour	8	3,018	1	14	39	1	160
Wabush	47	625	26	14	16	26	58
Whitecourt	13	2,594	14	15	69	14	234
Williams Lake	43	746	6	12	13	13	56

**Table 9-1**  
**Itinerant aircraft movements, peak hour and peak day — NAV CANADA towers**

	Rank of movements	Number of movements	Peak hour occurrence			Peak day occurrence	
			Day in month	Hour in day	Number of movements	Day in month	Number of movements
Abbotsford	13	5,828	13	11	48	20	316
Boundary Bay	14	5,694	10	15	58	13	345
Calgary International	3	20,031	15	18	62	14	808
Calgary/Springbank	10	6,423	17	11	53	23	404
Chicoutimi/St-Honoré	38	1,660	9	10	32	28	146
Edmonton City Centre	16	5,323	14	15	31	14	274
Edmonton International	7	10,125	29	13	36	29	422
Edmonton/Villeneuve	41	1,186	19	15	15	22	75
Gander International	32	2,330	5	8	21	5	184
Halifax/Robert L Stanfield International	12	6,130	19	16	27	2	253
Hamilton	28	3,309	13	13	18	28	180
Kelowna	23	3,862	7	10	24	2	178
Kitchener/Waterloo	25	3,483	2	15	38	2	296
Langley	26	3,323	21	15	41	1	199
London	20	4,408	13	13	40	13	308
Moncton/Greater Moncton International	18	5,083	14	14	28	2	285
Montréal/Mirabel International	37	1,678	1	11	18	28	91
Montréal/Pierre Elliott Trudeau International	4	17,730	2	18	65	28	681
Montréal/St-Hubert	15	5,566	2	15	44	2	378
Oshawa	35	1,905	18	13	26	13	169
Ottawa/Macdonald-Cartier International	6	10,958	13	14	46	2	476
Pitt Meadows	30	3,233	11	11	36	25	213
Prince George	33	2,221	21	9	19	20	109
Québec/Jean Lesage International	8	7,048	23	15	46	2	399
Regina International	29	3,288	15	15	18	1	160
Saskatoon/John G Diefenbaker International	19	5,065	22	16	31	22	253
Sault Ste. Marie	36	1,785	23	13	22	13	129
St. John's International	31	2,786	1	12	12	1	133
St-Jean	42	823	17	13	20	4	74
Sudbury	34	2,145	4	17	14	13	118
Thunder Bay	17	5,194	26	13	31	1	272
Toronto/Buttonville Municipal	11	6,392	3	12	49	13	443
Toronto/City Centre	24	3,692	13	16	29	13	222
Toronto/Lester B Pearson International	1	33,719	9	18	95	9	1,267
Vancouver Harbour	21	4,152	21	8	37	1	192
Vancouver International	2	25,089	22	8	79	30	988
Victoria International	9	6,928	4	14	49	30	367
Whitehorse International	40	1,215	8	13	11	8	68
Windsor	39	1,578	18	13	15	2	92
Winnipeg/James Armstrong Richardson International	5	11,236	7	15	41	29	495
Winnipeg/St. Andrews	27	3,313	12	16	29	7	202
Yellowknife	22	4,150	7	10	28	7	193

**Table 9-2**  
**Itinerant aircraft movements, peak hour and peak day — NAV CANADA flight service stations**

	Rank of movements	Number of movements	Peak hour occurrence			Peak day occurrence	
			Day in month	Hour in day	Number of movements	Day in month	Number of movements
Brandon Municipal	42	667	17	15	11	7	47
Campbell River	17	1,494	4	15	19	4	104
Castlegar	48	554	15	15	9	29	37
Charlottetown	27	1,055	14	9	12	6	69
Churchill	36	838	8	11	9	8	53
Cranbrook	38	762	14	13	10	2	39
Deer Lake	19	1,412	7	8	13	6	63
Fort McMurray	1	4,033	22	15	22	5	185
Fort Nelson	29	1,044	22	14	14	22	69
Fort St John	15	1,541	16	14	17	14	83
Fredericton International	6	2,313	8	15	18	28	137
Grande Prairie	5	2,381	14	9	17	14	141
High Level	45	625	1	10	9	14	49
Îles-de-la-Madeleine	52	324	2	6	4	28	18
Inuvik/Mike Zubko	16	1,526	19	14	13	21	83
Iqaluit	21	1,350	6	14	9	6	79
Kamloops	10	1,859	2	8	15	1	124
Kenora	37	765	12	13	9	30	48
Kingston	12	1,604	3	14	20	3	119
Kuujuuaq	33	874	13	12	8	30	42
Kuujuuarapik	49	535	2	11	6	2	31
La Grande Rivière	39	748	2	13	9	2	42
La Ronge	26	1,177	5	9	9	28	71
Lethbridge	13	1,585	16	12	20	17	87
Lloydminster	40	693	14	8	13	14	44
Medicine Hat	28	1,047	11	13	10	8	64
Mont-Joli	50	477	19	8	6	30	27
Nanaimo	11	1,652	30	12	19	30	107
Norman Wells	24	1,269	9	14	12	14	70
North Bay	14	1,580	13	10	15	13	118
Ottawa/Gatineau	30	1,016	3	14	18	3	74
Peace River	46	617	15	11	12	15	42
Penticton	20	1,350	7	14	17	14	92
Port Hardy	44	635	30	13	8	16	39
Prince Albert	18	1,421	1	8	13	1	90
Prince Rupert	51	350	19	14	10	19	36
Rankin Inlet	25	1,203	30	14	15	30	76
Red Deer Regional	8	1,932	16	12	23	23	108
Rouyn-Noranda	31	962	13	16	10	23	52
Saint John	22	1,348	25	16	12	7	74
Sept-Îles	9	1,864	8	15	16	2	93
Sioux Lookout	4	2,487	21	8	18	21	128
Smithers	43	651	22	15	8	1	38
St Anthony	53	293	2	14	6	5	24
St Catharines	34	852	13	15	17	13	78
Terrace	23	1,314	21	15	12	22	65
Thompson	3	2,728	22	15	16	8	135
Timmins	7	2,101	18	16	17	15	106
Val-D'or	32	922	3	12	9	18	48
Victoria Harbour	2	2,998	30	15	23	1	140
Wabush	47	591	22	11	9	20	28
Whitecourt	35	842	14	15	15	15	60
Williams Lake	41	684	13	9	10	1	40

**Table 10-1**  
**Local movements, peak hour and peak day — NAV CANADA towers**

	Rank of movements	Number of movements	Peak hour occurrence			Peak day occurrence	
			Day in month	Hour in day	Number of movements	Day in month	Number of movements
Abbotsford	2	9,028	29	14	110	29	560
Boundary Bay	3	8,876	7	13	86	13	578
Calgary International	36	315	17	13	19	17	58
Calgary/Springbank	1	10,561	8	13	104	8	635
Chicoutimi/St-Honoré	16	3,300	9	11	80	9	416
Edmonton City Centre	23	1,972	20	17	56	2	132
Edmonton International	33	470	15	10	42	1	82
Edmonton/Villeneuve	14	4,030	10	13	76	10	290
Gander International	24	1,712	30	14	44	3	180
Halifax/Robert L Stanfield International	32	586	28	11	26	14	80
Hamilton	26	1,405	17	12	40	2	136
Kelowna	17	2,966	16	10	66	16	288
Kitchener/Waterloo	11	4,656	20	14	70	13	334
Langley	8	5,750	20	15	76	1	314
London	10	4,873	20	15	80	20	520
Moncton/Greater Moncton International	13	4,156	8	12	42	2	282
Montréal/Mirabel International	34	401	9	15	30	9	38
Montréal/Pierre Elliott Trudeau International	0	0	0	0	0	0	0
Montréal/St-Hubert	6	6,994	19	16	96	9	504
Oshawa	18	2,768	13	15	58	13	332
Ottawa/Macdonald-Cartier International	15	3,848	1	14	50	8	248
Pitt Meadows	7	6,498	23	13	100	10	466
Prince George	22	2,090	20	15	76	21	274
Québec/Jean Lesage International	20	2,512	28	13	54	24	214
Regina International	29	955	10	12	40	10	146
Saskatoon/John G Diefenbaker International	21	2,474	1	11	42	22	174
Sault Ste. Marie	25	1,650	11	18	76	4	216
St. John's International	38	178	3	14	24	1	82
St-Jean	35	388	5	12	20	11	42
Sudbury	37	297	10	14	28	23	71
Thunder Bay	12	4,295	12	19	80	1	474
Toronto/Buttonville Municipal	4	8,664	17	9	74	2	558
Toronto/City Centre	19	2,728	10	12	60	18	222
Toronto/Lester B Pearson International	0	0	0	0	0	0	0
Vancouver Harbour	39	4	11	14	2	11	2
Vancouver International	0	0	0	0	0	0	0
Victoria International	9	5,008	24	13	50	18	316
Whitehorse International	31	714	17	15	34	17	80
Windsor	28	1,202	3	13	36	10	96
Winnipeg/James Armstrong Richardson International	30	783	28	18	24	2	54
Winnipeg/St. Andrews	5	7,252	26	10	92	9	486
Yellowknife	27	1,234	16	15	46	16	144

**Table 10-2**  
**Local movements, peak hour and peak day — NAV CANADA flight service stations**

	Rank of movements	Number of movements	Peak hour occurrence			Peak day occurrence	
			Day in month	Hour in day	Number of movements	Day in month	Number of movements
Brandon Municipal	14	716	6	10	28	21	100
Campbell River	5	1,674	1	13	44	22	160
Castlegar	18	400	7	10	44	30	54
Charlottetown	13	904	18	19	34	20	106
Churchill	0	0	0	0	0	0	0
Cranbrook	30	132	14	12	16	21	20
Deer Lake	25	177	23	10	24	25	42
Fort McMurray	19	384	5	14	20	11	64
Fort Nelson	33	76	22	11	24	22	24
Fort St John	23	214	20	14	16	21	32
Fredericton International	2	2,051	21	16	30	8	178
Grande Prairie	12	938	21	18	38	12	88
High Level	46	4	29	13	4	29	4
Îles-de-la-Madeleine	0	0	0	0	0	0	0
Inuvik/Mike Zubko	31	96	24	18	12	2	18
Iqaluit	27	168	2	9	24	15	34
Kamloops	17	506	21	14	28	21	82
Kenora	38	46	3	15	12	3	24
Kingston	10	1,046	8	10	26	13	84
Kuujuaq	36	60	3	18	8	4	10
Kuujuarapik	0	0	0	0	0	0	0
La Grande Rivière	44	8	10	13	4	10	6
La Ronge	40	32	3	14	10	3	12
Lethbridge	7	1,212	16	9	32	20	122
Lloydminster	20	376	30	14	24	30	64
Medicine Hat	15	593	22	15	26	6	60
Mont-Joli	0	0	0	0	0	0	0
Nanaimo	16	550	4	10	28	4	116
Norman Wells	11	956	7	10	20	7	70
North Bay	1	2,588	9	15	92	9	262
Ottawa/Gatineau	8	1,174	28	10	42	28	128
Peace River	47	4	15	11	4	15	4
Penticton	4	1,746	27	15	80	14	214
Port Hardy	45	6	22	21	6	22	6
Prince Albert	32	92	24	11	18	1	18
Prince Rupert	29	140	10	15	24	10	24
Rankin Inlet	48	2	15	11	2	15	2
Red Deer Regional	6	1,562	15	16	40	15	134
Rouyn-Noranda	22	226	11	16	34	11	80
Saint John	24	202	21	15	30	21	84
Sept-Îles	34	68	17	14	18	17	22
Sioux Lookout	26	170	30	14	24	30	26
Smithers	41	22	20	17	10	20	10
St Anthony	0	0	0	0	0	0	0
St Catharines	9	1,112	18	16	42	3	156
Terrace	28	167	12	15	28	12	54
Thompson	43	14	8	11	4	8	4
Timmins	37	58	3	19	12	3	32
Val-D'or	21	286	3	14	20	19	76
Victoria Harbour	42	20	1	14	20	1	20
Wabush	39	34	26	14	16	26	34
Whitecourt	3	1,752	15	14	56	14	180
Williams Lake	35	62	6	12	12	13	20

**Table 11-1**  
**Local movements - civil, peak hour and peak day — NAV CANADA towers**

	Rank of movements	Number of movements	Peak hour occurrence			Peak day occurrence	
			Day in month	Hour in day	Number of movements	Day in month	Number of movements
Abbotsford	2	9,026	29	14	110	29	560
Boundary Bay	3	8,876	7	13	86	13	578
Calgary International	36	315	17	13	19	17	58
Calgary/Springbank	1	10,555	8	13	104	8	635
Chicoutimi/St-Honoré	16	3,300	9	11	80	9	416
Edmonton City Centre	23	1,960	20	17	56	2	132
Edmonton International	32	456	15	10	42	1	82
Edmonton/Villeneuve	14	4,030	10	13	76	10	290
Gander International	25	1,506	2	16	38	3	174
Halifax/Robert L Stanfield International	33	454	28	11	26	28	78
Hamilton	26	1,405	17	12	40	2	136
Kelowna	17	2,966	16	10	66	16	288
Kitchener/Waterloo	11	4,656	20	14	70	13	334
Langley	8	5,740	20	15	76	1	314
London	9	4,873	20	15	80	20	520
Moncton/Greater Moncton International	13	4,156	8	12	42	2	282
Montréal/Mirabel International	35	355	5	12	26	10	38
Montréal/Pierre Elliott Trudeau International	0	0	0	0	0	0	0
Montréal/St-Hubert	6	6,990	19	16	96	9	504
Oshawa	18	2,768	13	15	58	13	332
Ottawa/Macdonald-Cartier International	15	3,802	4	10	50	8	248
Pitt Meadows	7	6,498	23	13	100	10	466
Prince George	22	2,090	20	15	76	21	274
Québec/Jean Lesage International	20	2,508	28	13	54	24	214
Regina International	29	921	10	12	40	10	146
Saskatoon/John G Diefenbaker International	21	2,422	1	11	42	22	174
Sault Ste. Marie	24	1,630	11	18	76	4	216
St. John's International	38	178	3	14	24	1	82
St-Jean	34	388	5	12	20	11	42
Sudbury	37	297	10	14	28	23	71
Thunder Bay	12	4,259	12	19	80	1	474
Toronto/Buttonville Municipal	4	8,664	17	9	74	2	558
Toronto/City Centre	19	2,728	10	12	60	18	222
Toronto/Lester B Pearson International	0	0	0	0	0	0	0
Vancouver Harbour	39	4	11	14	2	11	2
Vancouver International	0	0	0	0	0	0	0
Victoria International	10	4,790	24	13	50	18	316
Whitehorse International	30	700	17	15	34	17	80
Windsor	27	1,190	3	13	36	10	96
Winnipeg/James Armstrong Richardson International	31	661	28	18	24	2	52
Winnipeg/St. Andrews	5	7,252	26	10	92	9	486
Yellowknife	28	1,146	16	15	46	16	144

**Table 11-2**  
**Local movements - civil, peak hour and peak day — NAV CANADA flight service stations**

	Rank of movements	Number of movements	Peak hour occurrence			Peak day occurrence	
			Day in month	Hour in day	Number of movements	Day in month	Number of movements
Brandon Municipal	14	716	6	10	28	21	100
Campbell River	5	1,674	1	13	44	22	160
Castlegar	18	400	7	10	44	30	54
Charlottetown	13	904	18	19	34	20	106
Churchill	0	0	0	0	0	0	0
Cranbrook	30	132	14	12	16	21	20
Deer Lake	25	171	23	10	24	25	42
Fort McMurray	19	384	5	14	20	11	64
Fort Nelson	33	76	22	11	24	22	24
Fort St John	23	214	20	14	16	21	32
Fredericton International	2	2,050	21	16	30	8	178
Grande Prairie	12	938	21	18	38	12	88
High Level	46	4	29	13	4	29	4
Îles-de-la-Madeleine	0	0	0	0	0	0	0
Inuvik/Mike Zubko	31	96	24	18	12	2	18
Iqaluit	27	168	2	9	24	15	34
Kamloops	16	502	21	14	28	21	82
Kenora	38	46	3	15	12	3	24
Kingston	10	1,046	8	10	26	13	84
Kuujuaq	36	60	3	18	8	4	10
Kuujuarapik	0	0	0	0	0	0	0
La Grande Rivière	44	8	10	13	4	10	6
La Ronge	40	32	3	14	10	3	12
Lethbridge	7	1,186	16	9	32	20	122
Lloydminster	20	376	30	14	24	30	64
Medicine Hat	15	585	22	15	26	6	60
Mont-Joli	0	0	0	0	0	0	0
Nanaimo	17	456	16	13	24	13	74
Norman Wells	11	956	7	10	20	7	70
North Bay	1	2,588	9	15	92	9	262
Ottawa/Gatineau	8	1,174	28	10	42	28	128
Peace River	47	4	15	11	4	15	4
Penticton	4	1,746	27	15	80	14	214
Port Hardy	45	6	22	21	6	22	6
Prince Albert	32	86	24	11	18	24	18
Prince Rupert	29	140	10	15	24	10	24
Rankin Inlet	48	2	15	11	2	15	2
Red Deer Regional	6	1,562	15	16	40	15	134
Rouyn-Noranda	22	226	11	16	34	11	80
Saint John	24	202	21	15	30	21	84
Sept-Îles	34	68	17	14	18	17	22
Sioux Lookout	26	170	30	14	24	30	26
Smithers	41	22	20	17	10	20	10
St Anthony	0	0	0	0	0	0	0
St Catharines	9	1,112	18	16	42	3	156
Terrace	28	167	12	15	28	12	54
Thompson	43	14	8	11	4	8	4
Timmins	37	58	3	19	12	3	32
Val-D'or	21	286	3	14	20	19	76
Victoria Harbour	42	20	1	14	20	1	20
Wabush	39	34	26	14	16	26	34
Whitecourt	3	1,752	15	14	56	14	180
Williams Lake	35	62	6	12	12	13	20



**Table 12-1**  
**Local movements - military, peak hour and peak day — NAV CANADA towers**

	Rank of movements	Number of movements	Peak hour occurrence			Peak day occurrence	
			Day in month	Hour in day	Number of movements	Day in month	Number of movements
Abbotsford	20	2	21	19	2	21	2
Boundary Bay	0	0	0	0	0	0	0
Calgary International	0	0	0	0	0	0	0
Calgary/Springbank	17	6	6	14	2	6	4
Chicoutimi/St-Honoré	0	0	0	0	0	0	0
Edmonton City Centre	14	12	26	10	4	9	4
Edmonton International	12	14	8	14	4	8	8
Edmonton/Villeneuve	0	0	0	0	0	0	0
Gander International	2	206	6	7	10	25	32
Halifax/Robert L Stanfield International	3	132	14	13	16	14	44
Hamilton	0	0	0	0	0	0	0
Kelowna	0	0	0	0	0	0	0
Kitchener/Waterloo	0	0	0	0	0	0	0
Langley	16	10	10	11	4	10	4
London	0	0	0	0	0	0	0
Moncton/Greater Moncton International	0	0	0	0	0	0	0
Montréal/Mirabel International	8	46	9	15	24	9	24
Montréal/Pierre Elliott Trudeau International	0	0	0	0	0	0	0
Montréal/St-Hubert	19	4	2	11	4	2	4
Oshawa	0	0	0	0	0	0	0
Ottawa/Macdonald-Cartier International	7	46	19	12	10	19	20
Pitt Meadows	0	0	0	0	0	0	0
Prince George	0	0	0	0	0	0	0
Québec/Jean Lesage International	18	4	5	10	4	5	4
Regina International	10	34	2	15	4	7	8
Saskatoon/John G Diefenbaker International	6	52	24	20	10	24	16
Sault Ste. Marie	11	20	23	12	12	23	20
St. John's International	0	0	0	0	0	0	0
St-Jean	0	0	0	0	0	0	0
Sudbury	0	0	0	0	0	0	0
Thunder Bay	9	36	26	12	14	26	22
Toronto/Buttonville Municipal	0	0	0	0	0	0	0
Toronto/City Centre	0	0	0	0	0	0	0
Toronto/Lester B Pearson International	0	0	0	0	0	0	0
Vancouver Harbour	0	0	0	0	0	0	0
Vancouver International	0	0	0	0	0	0	0
Victoria International	1	218	6	17	22	6	46
Whitehorse International	13	14	2	17	12	2	12
Windsor	15	12	15	11	6	15	6
Winnipeg/James Armstrong Richardson International	4	122	27	11	12	16	20
Winnipeg/St. Andrews	0	0	0	0	0	0	0
Yellowknife	5	88	7	14	16	7	28

**Table 12-2**  
**Local movements - military, peak hour and peak day — NAV CANADA flight service stations**

	Rank of movements	Number of movements	Peak hour occurrence			Peak day occurrence	
			Day in month	Hour in day	Number of movements	Day in month	Number of movements
Brandon Municipal	0	0	0	0	0	0	0
Campbell River	0	0	0	0	0	0	0
Castlegar	0	0	0	0	0	0	0
Charlottetown	0	0	0	0	0	0	0
Churchill	0	0	0	0	0	0	0
Cranbrook	0	0	0	0	0	0	0
Deer Lake	4	6	19	13	6	19	6
Fort McMurray	0	0	0	0	0	0	0
Fort Nelson	0	0	0	0	0	0	0
Fort St John	0	0	0	0	0	0	0
Fredericton International	7	1	30	11	1	30	1
Grande Prairie	0	0	0	0	0	0	0
High Level	0	0	0	0	0	0	0
Îles-de-la-Madeleine	0	0	0	0	0	0	0
Inuvik/Mike Zubko	0	0	0	0	0	0	0
Iqaluit	0	0	0	0	0	0	0
Kamloops	6	4	30	15	4	30	4
Kenora	0	0	0	0	0	0	0
Kingston	0	0	0	0	0	0	0
Kuujuaq	0	0	0	0	0	0	0
Kuujuarapik	0	0	0	0	0	0	0
La Grande Rivière	0	0	0	0	0	0	0
La Ronge	0	0	0	0	0	0	0
Lethbridge	2	26	1	19	18	1	26
Lloydminster	0	0	0	0	0	0	0
Medicine Hat	3	8	21	14	8	21	8
Mont-Joli	0	0	0	0	0	0	0
Nanaimo	1	94	4	10	28	4	92
Norman Wells	0	0	0	0	0	0	0
North Bay	0	0	0	0	0	0	0
Ottawa/Gatineau	0	0	0	0	0	0	0
Peace River	0	0	0	0	0	0	0
Penticton	0	0	0	0	0	0	0
Port Hardy	0	0	0	0	0	0	0
Prince Albert	5	6	1	12	6	1	6
Prince Rupert	0	0	0	0	0	0	0
Rankin Inlet	0	0	0	0	0	0	0
Red Deer Regional	0	0	0	0	0	0	0
Rouyn-Noranda	0	0	0	0	0	0	0
Saint John	0	0	0	0	0	0	0
Sept-Îles	0	0	0	0	0	0	0
Sioux Lookout	0	0	0	0	0	0	0
Smithers	0	0	0	0	0	0	0
St Anthony	0	0	0	0	0	0	0
St Catharines	0	0	0	0	0	0	0
Terrace	0	0	0	0	0	0	0
Thompson	0	0	0	0	0	0	0
Timmins	0	0	0	0	0	0	0
Val-D'or	0	0	0	0	0	0	0
Victoria Harbour	0	0	0	0	0	0	0
Wabush	0	0	0	0	0	0	0
Whitecourt	0	0	0	0	0	0	0
Williams Lake	0	0	0	0	0	0	0

# Methodology

---

## Survey universe

### Coverage

The survey covers all aircraft movements at Canadian airports with NAV CANADA air traffic control towers and flight service stations.

## Methodology survey

The Itinerant movement record is designed to capture:

- Aircraft identification
- Aircraft type
- The last station before landing at the reporting airport or the next station after take-off
- Arrival or departure
- Time of movement
- Runway used
- Flight rules (Instrument flight rules or Visual flight rules).

The Local aircraft movement record provides for reports of local movements by:

- Hour
- Single engine aircraft
- Multi-engine aircraft
- Jet aircraft
- Military aircraft
- Date of movement

Processing of aircraft movement statistics involves several stages. Preliminary monthly data by class of operation are released in **Preliminary aircraft movement statistics**, catalogue no. 51F0001P (TP-1496 (NAV CANADA towered airports only)). Data which follow in **Aircraft movement statistics - Monthly** report, catalogue nos. 51-007-X and 51-008-X (TP-141) may contain revisions to the originally released figures. Annual tables, which may reflect further revisions, are released in the publication, **Aircraft movement statistics - Annual** report - TP-577. In particular, data on itinerant movements by type of operation may reflect revisions as various sources of comparative information (data collected from commercial air carriers by the Aviation Statistics Centre, Statistics Canada) become available during the processing cycle. Finally, when revisions are required after the release of TP-577, they are contained in the five year historical summary of subsequent editions of TP-577. These revisions are also reflected in the CANSIM tables, both monthly and annual.

The records are completed daily, based on a twenty-four hour clock running from zero hour to 23:59. The times recorded are Coordinated Universal Time (UTC); however, published statistics are shown in local times. The records are transmitted to the Aviation Statistics Centre.

The Aviation Statistics Centre maintains a data base of parameter files of current information on all registered aircraft. The storage of this information reduces the reporting burden of the survey respondents and limits the element of human error associated with the preparation of source documents.

Other parameter files information includes registered aircraft identifications and their corresponding aircraft types, gross take-off weights, types of power plant (piston, jet or turboprop); whether the aircraft are fixed wing, helicopters or gliders. This information also provides a basis for identifying type of flights (commercial, private and government) and the geographical area in which the flights take place.

The parameter files also include airport environment information against which the airport category is checked; the reported runway is validated and the time difference between UTC and Local is assigned.

## Data quality and limitations

---

Aircraft movement statistics are accumulated from data originating with air traffic control tower units or flight service station personnel. Because staff in these positions are highly trained in factual observation and reporting, the entries in the data bank are of a high quality.

The procedures for reporting aircraft movements on the Daily air traffic records by tower units are described in the NAV CANADA Air traffic control manual of operations (TP 703) Volume 1, Para. 1023 to 1023.5. Definitions for terms used in these paragraphs can be found in the appendix I "Glossary of terms" of this report.

To maintain uniformity in the reporting of source data, ASC issues to air traffic control units an "Air traffic designators" handbook (TP 143) listing the official Transport Canada aircraft type designators and the designators of various domestic and international air carriers. This handbook and another titled "Canada flight supplement" listing various airport codes serve as references to help ensure the reporting of the proper aircraft identity and the point of origin and destination of flights.

The processing system contains editing procedures designed to identify data errors occurring during transcription or during data capture of forms. Identified errors are manually corrected by ASC editing staff.

Errors may occur if an aircraft type code which exists is reported or data captured in error for a flight. For example, the reporting or keying of B727 for a flight actually performed by a B737 may not be detected during the system editing. That the aircraft type information is recorded by highly trained air traffic control tower staff using a common handbook of official aircraft codes will minimize this problem.

Similarly, the breakdown of the data on a geographic basis by use of location codes can be subject to error. For smaller locations, alphanumeric location codes are often used and the sequence of numbers and letters determines the geographic area to which the data are assigned. In some cases, where a sequence error has been introduced into the system either at the reporting unit or at data capture, a domestic movement may be classified as transborder or vice versa. The use of common manuals of location identifiers works to minimize this occurrence.

### Factors influencing the data

Air Canada has added new year-round, non-stop services between Fredericton and Ottawa, Moncton and Ottawa and St. John's and Ottawa effective October, 28, 2007.

Emirates SkyCargo started non-stop services three times a week between Dubai and Toronto effective October 29, 2007.

The new Airbus A380 made its first landing at Montréal-Trudeau Airport on November 12, 2007.

# Appendix I

---

## Glossary of terms

### Air carrier

Aircraft operators licensed by the Canadian Transportation Agency to transport persons, mail and/or goods by air.

**Levels I to III air carriers (Defn 2000)** – This includes every Canadian air carrier that, in each of the two calendar years immediately preceding the report year, realized annual gross revenues of \$1,000,000 or more for the air services for which the air carrier held a licence. Also includes foreign air carriers.

**Levels IV to VI air carriers (Defn 2000)** – Canadian air carriers not classified in report level I-III that, in each of the two calendar years immediately preceding the report year, realized annual gross revenues of less than \$1,000,000 for the air services for which the air carrier held a licence. Since 2000, levels IV and VI are no longer applicable.

### Aircraft movement

A take off, a landing, or a simulated approach by an aircraft. ATC Manops amendment 8-8-83. NC-703.

### Class of operation

Aircraft movements are classified as either “Itinerant” or “Local”.

### Commercial

Flights by aircraft operators licensed by the Canadian Transportation Agency to perform commercial air services. Commercial operations are divided into two categories: **Air carrier** and **Other commercial**.

### Domestic itinerant movements

Movements, at a Canadian airport, of aircraft departing to or arriving from another point in Canada.

### FSS

Flight service station.

### Government – Civil

Aircraft owned by federal, provincial and municipal bodies as well as foreign states, but excluding those owned by crown corporations, boards and commissions. Such aircraft are coded “3” under “Purpose” in the Canadian civil aircraft register.

### Government – Military

Aircraft of any branch of the armed forces of any nation.

### Gross take-off weight

The maximum weight for which the aircraft is licensed to operate. For operational purposes, all weights are rounded upwards to the next 1,000 kilograms. Thus 3,200 kilograms becomes 4,000 kilograms.

### I.F.R. flight

A flight conducted in accordance with Instrument flight rules.

### International movements

Movements, at a Canadian airport, of aircraft arriving from or departing to a point outside Canada. International movements are subclassified into “transborder” (to or from a point in the United States including Alaska but excluding Hawaii), and “other international” (to or from points in countries other than Canada and the United States).

Since aircraft movements are reported on the basis of place “arrived from” or “departed to”, an arrival at Mirabel airport from London, England would appear under “other international”. If the same aircraft moved on to Toronto, both the departure at Mirabel and the arrival at Toronto would be shown as “domestic”.

### Itinerant movements

At Airports **with** control towers and/or Flight service stations: for the purpose of completing air traffic records, itinerant movements are considered as movements in which aircraft proceed to or arrive from another location; or where aircraft leave the circuit but return without landing at another airport. At Airports **without** control towers: an aircraft movement in which the aircraft arrives from or departs to a point other than the reporting airport; or a movement by an aircraft that leaves the close proximity of an airport and returns without landing at another airport.

### Local movements

At Airports **with** control towers and/or Flight service stations: for the purpose of completing air traffic records, local movements are considered as movements in which the aircraft remains in the circuit. At Airports **without** control towers: an aircraft movement in which the aircraft remains in the close proximity of the airport. Local movements are often carried out during training flights (touch-and-go), equipment tests etc.

### Other commercial

Flights performed by **Commercial** aircraft operators not included in the **Air carrier** categories. Flying schools, agricultural sprayers, water-bombers, aerial photography and survey, etc.

### Power plant

The source of propulsion. For example, piston engines, turbo-propellers and jet engines. “Helicopters”, in this report, include both piston and turboshaft-driven engines.

### Private aircraft

Aircraft used solely for private purposes, not for hire and compensation, which are classified as “Private” or “Private Restricted” in the Canadian civil aircraft register or similar registries of other countries. Owners include individuals, groups and business firms.

### **Runway 88**

Through control zone flights, i.e. flights which communicate with the tower while transiting the tower control zone to another destination without landing at the reporting airport.

Data for these runways are not included in the grand total.

### **Simulated approaches**

Movements that are either missed instrument or practice instrument approaches without landing.

### **TC**

Transport Canada

### **Tower control zone**

A controlled airspace within the proximity of an air traffic control tower, usually within a radius of less than 24 kilometres of the tower.

### **V.F.R. flight**

A flight conducted in accordance with Visual flight rules.

### **Weight group**

The classification of weight classes in groups for statistical purposes.