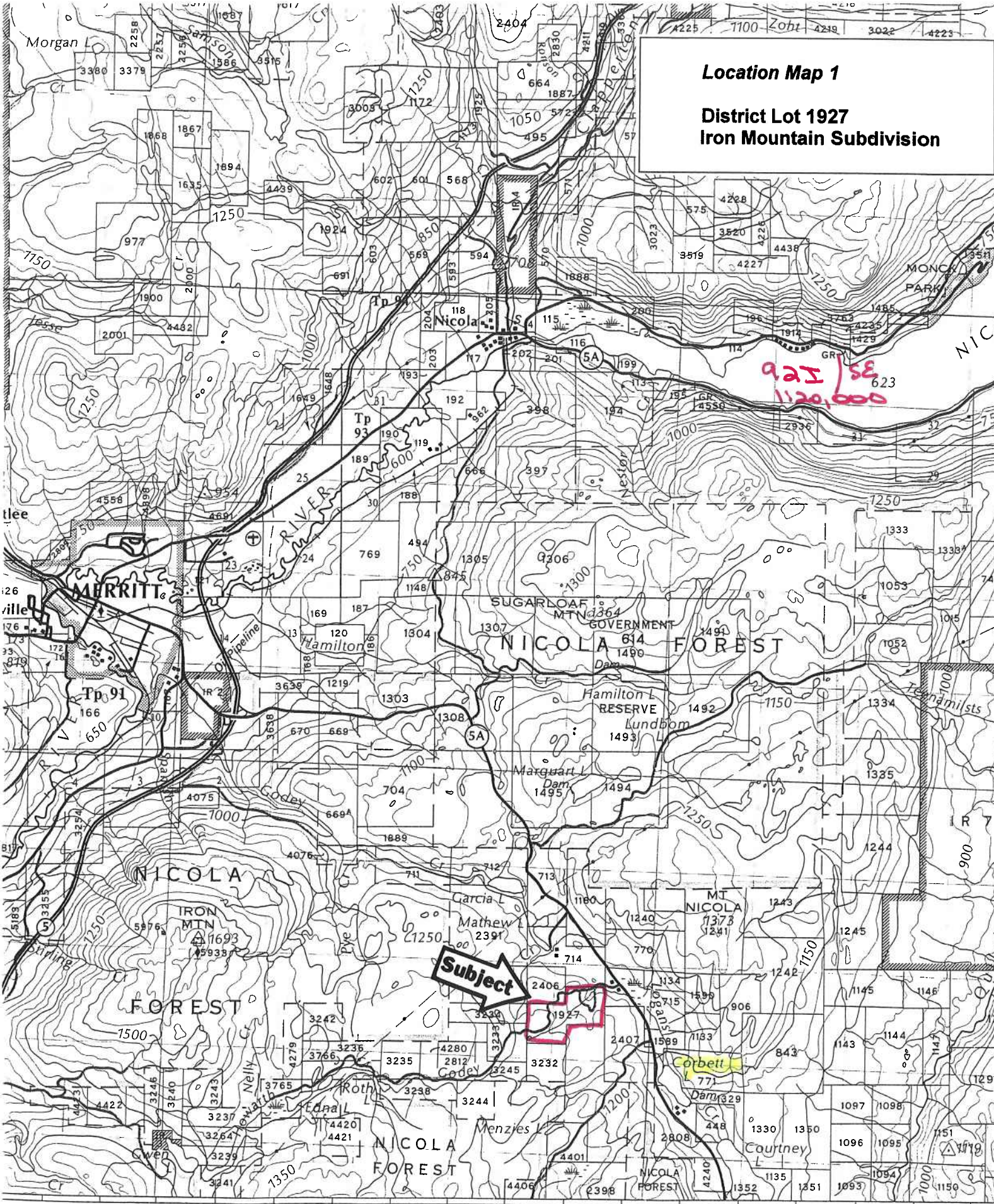


**Location Map 1**  
**District Lot 1927**  
**Iron Mountain Subdivision**



923 SE  
 1120,000

**Subject**

58    60    45'    62    64    66    68    70    72    74    76

To Princeton - 71 km

Scale 1:100,000



# Location Map 2

## Iron Mountain Subdivision



D . L . 770

D . L . 1134

D . L . 715

D . L . 1589

D . L . 2407

D . L . 714

D . L . 2406

D . L . 1927

D . L . 3232

District Lot 714

PLAN 25563

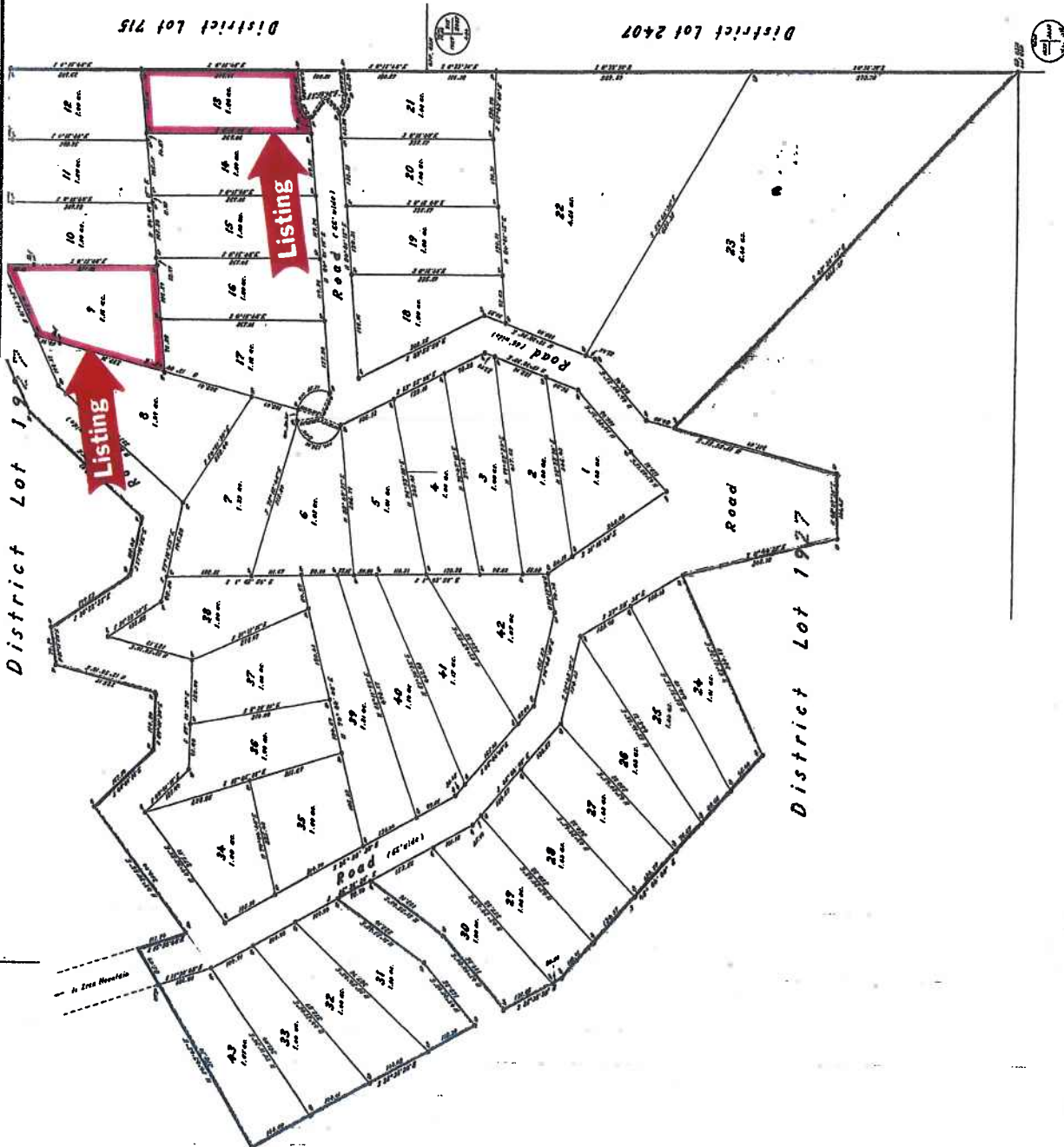
Approved by the City of Iron Mountain, K.D.Y.D., on the 15th day of May, 1927.

Plan 25563

Lots 9 & 13  
Iron Mountain Subdivision

Plan of Subdivision  
of Part of D.L. 1927,  
K.D.Y.D.

SCALE 1" = 100'



Drawings are prepared and are approved from the best by O.L.T. shown as of 12/12/27, as per Plan 1927.

6 ft. - - - - - Showing Right of Way  
12 ft. - - - - - Showing Street  
0 - - - - - Showing 'C' or 'D'

I, R.C. DOMINICK, of the City of Iron Mountain, British Columbia, being duly sworn, depose and say that I am a duly qualified and sworn Surveyor and that I have surveyed the above described lots and that the same conform to the survey and plan thereon and that I am a duly qualified and sworn Surveyor of the City of Iron Mountain, British Columbia.

Given under my hand and the seal of the City of Iron Mountain, British Columbia, this 15th day of May, 1927.

Approved after the reading of the above plan on the 15th day of May, 1927, at a public hearing held at the City of Iron Mountain, British Columbia.

This Plan has been approved by the City of Iron Mountain, British Columbia.

Attest:

Witness:

W.H. NEWBERRY, Mayor

City of Iron Mountain

Witness:

Witness:

Attest: W.H. Newberry, Mayor  
City of Iron Mountain  
Witness: W.H. Newberry, Mayor

**POSTING PLAN OF**  
**LOTS 9 AND 13, PLAN 25563**  
**DISTRICT LOT 1927**  
**KAMLOOPS DIVISION YALE DISTRICT**  
 B. C. S. 921.007

Scale 1 : 1000



**LEGEND**

BEARINGS ARE ASTRONOMIC, DERIVED FROM PLAN 25563.  
 BEARINGS TO BEARING TREES ARE MAGNETIC.  
 DISTANCES ARE IN METRES.

- STANDARD IRON POST FOUND
- STANDARD IRON POST PLACED

THIS PLAN LIES WITHIN THE THOMPSON - NICOLA REGIONAL DISTRICT.

**GRAHAM & ASSOCIATES**  
 B. C. AND CANADA LAND SURVEYORS  
 BOX 1129, HERRITT, B. C. V1K 1B8  
 File 07073A F. B. 79/54-55

