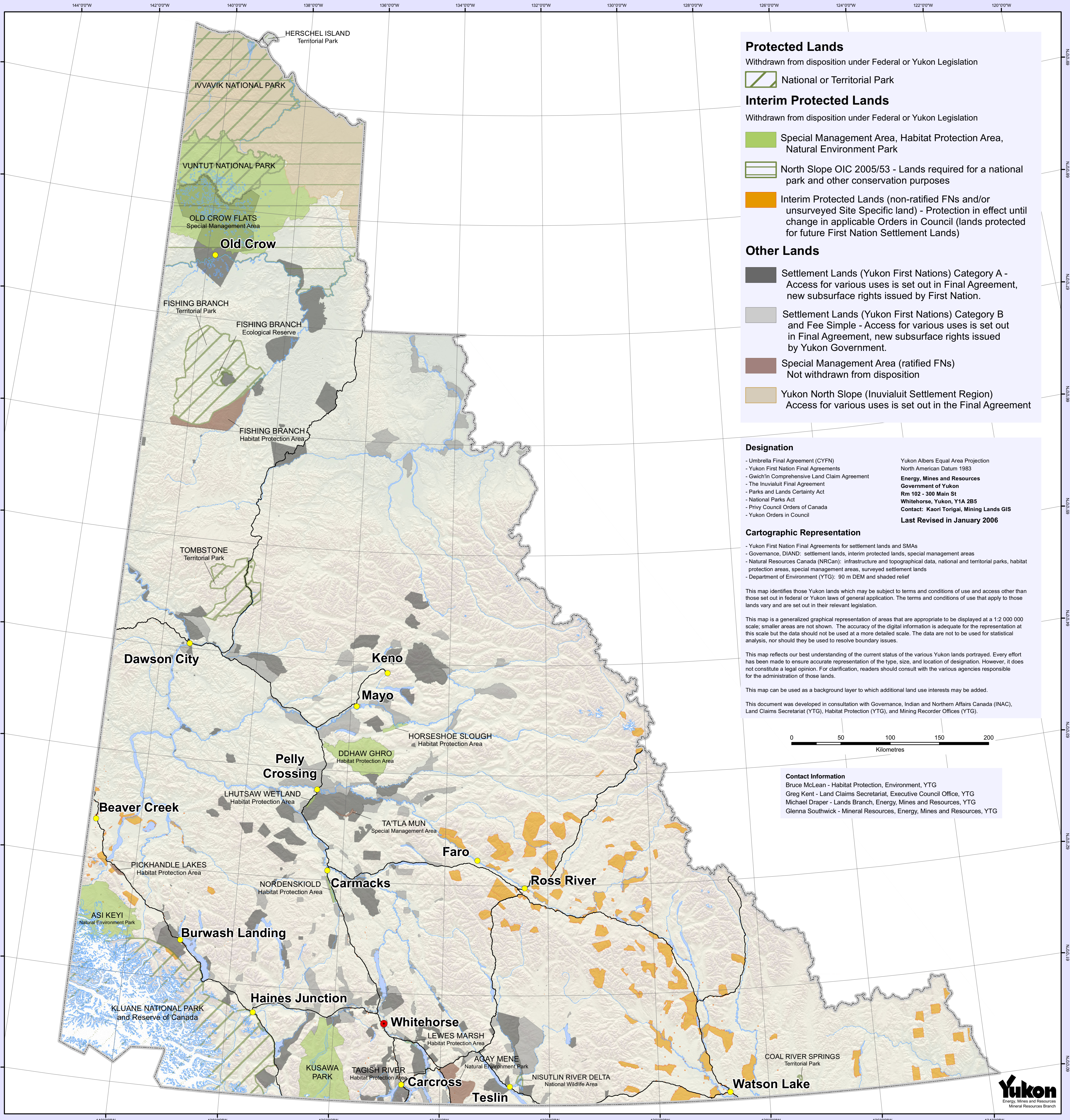


# Yukon Land Status



**Protected Lands**  
Withdrawn from disposition under Federal or Yukon Legislation

- National or Territorial Park

**Interim Protected Lands**  
Withdrawn from disposition under Federal or Yukon Legislation

- Special Management Area, Habitat Protection Area, Natural Environment Park
- North Slope OIC 2005/53 - Lands required for a national park and other conservation purposes
- Interim Protected Lands (non-ratified FNs and/or unsurveyed Site Specific land) - Protection in effect until change in applicable Orders in Council (lands protected for future First Nation Settlement Lands)

**Other Lands**

- Settlement Lands (Yukon First Nations) Category A - Access for various uses is set out in Final Agreement, new subsurface rights issued by First Nation.
- Settlement Lands (Yukon First Nations) Category B and Fee Simple - Access for various uses is set out in Final Agreement, new subsurface rights issued by Yukon Government.
- Special Management Area (ratified FNs) Not withdrawn from disposition
- Yukon North Slope (Inuvialuit Settlement Region) Access for various uses is set out in the Final Agreement

**Designation**

- Umbrella Final Agreement (CYFN)
- Yukon First Nation Final Agreements
- Gwich'in Comprehensive Land Claim Agreement
- The Inuvialuit Final Agreement
- Parks and Lands Certainty Act
- National Parks Act
- Privy Council Orders of Canada
- Yukon Orders in Council

Yukon Albers Equal Area Projection  
North American Datum 1983  
**Energy, Mines and Resources**  
Government of Yukon  
Rm 102 - 300 Main St  
Whitehorse, Yukon, Y1A 2B5  
Contact: Kaori Torigai, Mining Lands GIS  
Last Revised in January 2006

**Cartographic Representation**

- Yukon First Nation Final Agreements for settlement lands and SMAs
- Governance, DIAND: settlement lands, interim protected lands, special management areas
- Natural Resources Canada (NRCAN): infrastructure and topographical data, national and territorial parks, habitat protection areas, special management areas, surveyed settlement lands
- Department of Environment (YTG): 90 m DEM and shaded relief

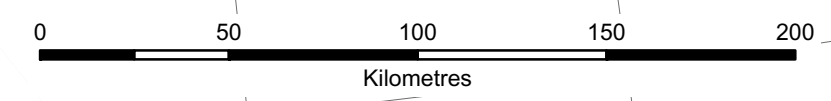
This map identifies those Yukon lands which may be subject to terms and conditions of use and access other than those set out in federal or Yukon laws of general application. The terms and conditions of use that apply to those lands vary and are set out in their relevant legislation.

This map is a generalized graphical representation of areas that are appropriate to be displayed at a 1:2 000 000 scale; smaller areas are not shown. The accuracy of the digital information is adequate for the representation at this scale but the data should not be used at a more detailed scale. The data are not to be used for statistical analysis, nor should they be used to resolve boundary issues.

This map reflects our best understanding of the current status of the various Yukon lands portrayed. Every effort has been made to ensure accurate representation of the type, size, and location of designation. However, it does not constitute a legal opinion. For clarification, readers should consult with the various agencies responsible for the administration of those lands.

This map can be used as a background layer to which additional land use interests may be added.

This document was developed in consultation with Governance, Indian and Northern Affairs Canada (INAC), Land Claims Secretariat (YTG), Habitat Protection (YTG), and Mining Recorder Offices (YTG).



**Contact Information**

- Bruce McLean - Habitat Protection, Environment, YTG
- Greg Kent - Land Claims Secretariat, Executive Council Office, YTG
- Michael Draper - Lands Branch, Energy, Mines and Resources, YTG
- Glenna Southwick - Mineral Resources, Energy, Mines and Resources, YTG

