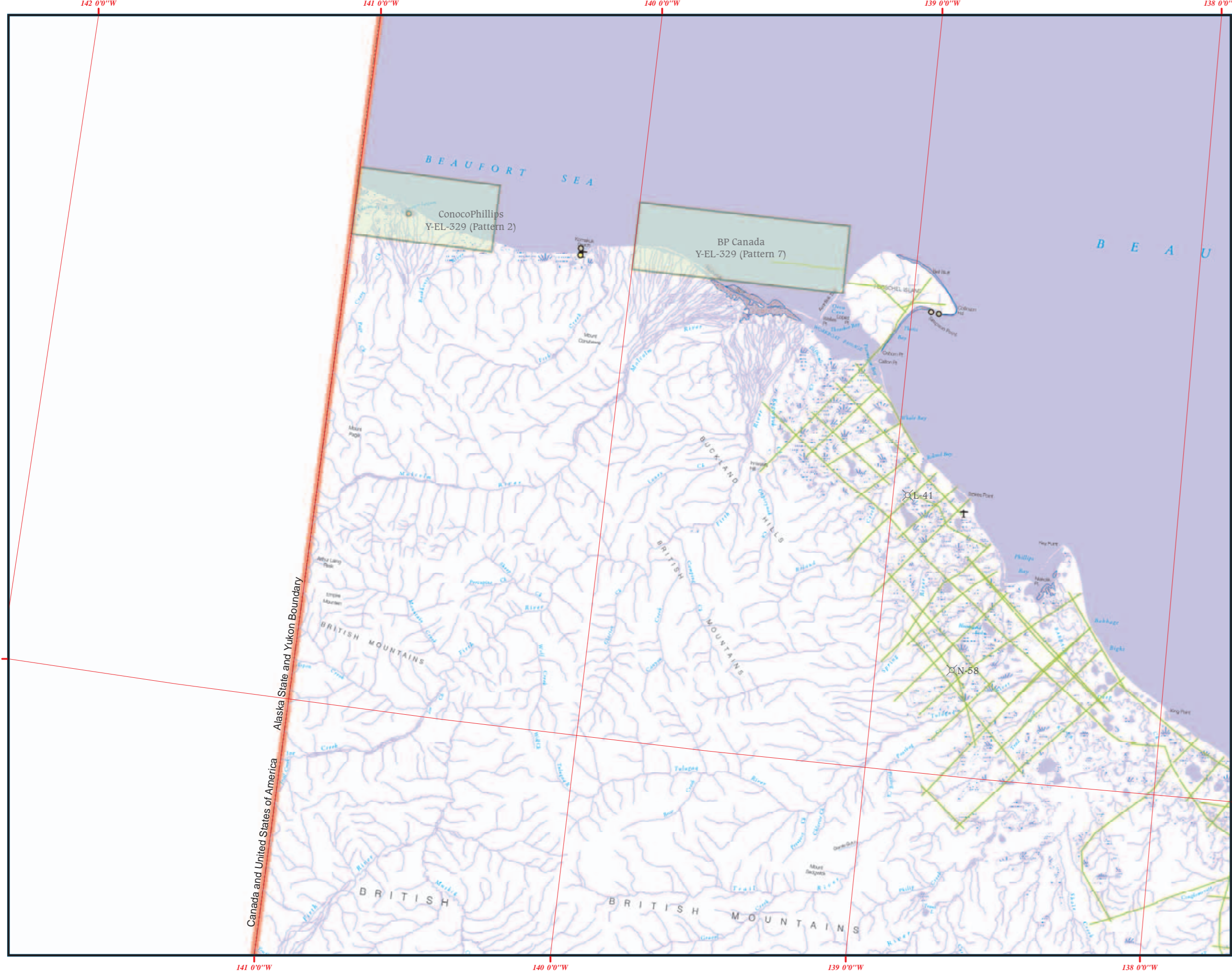
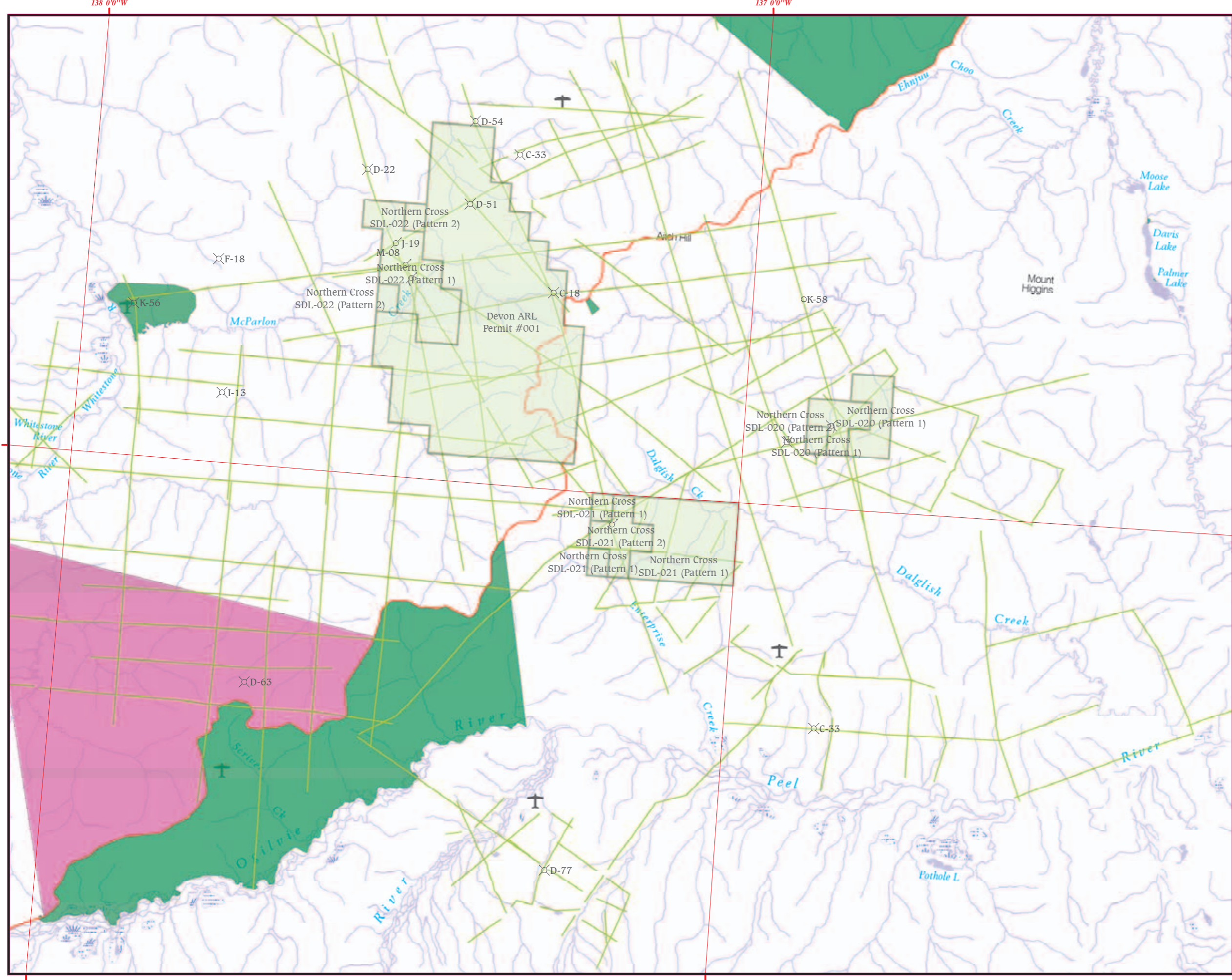


Existing Dispositions

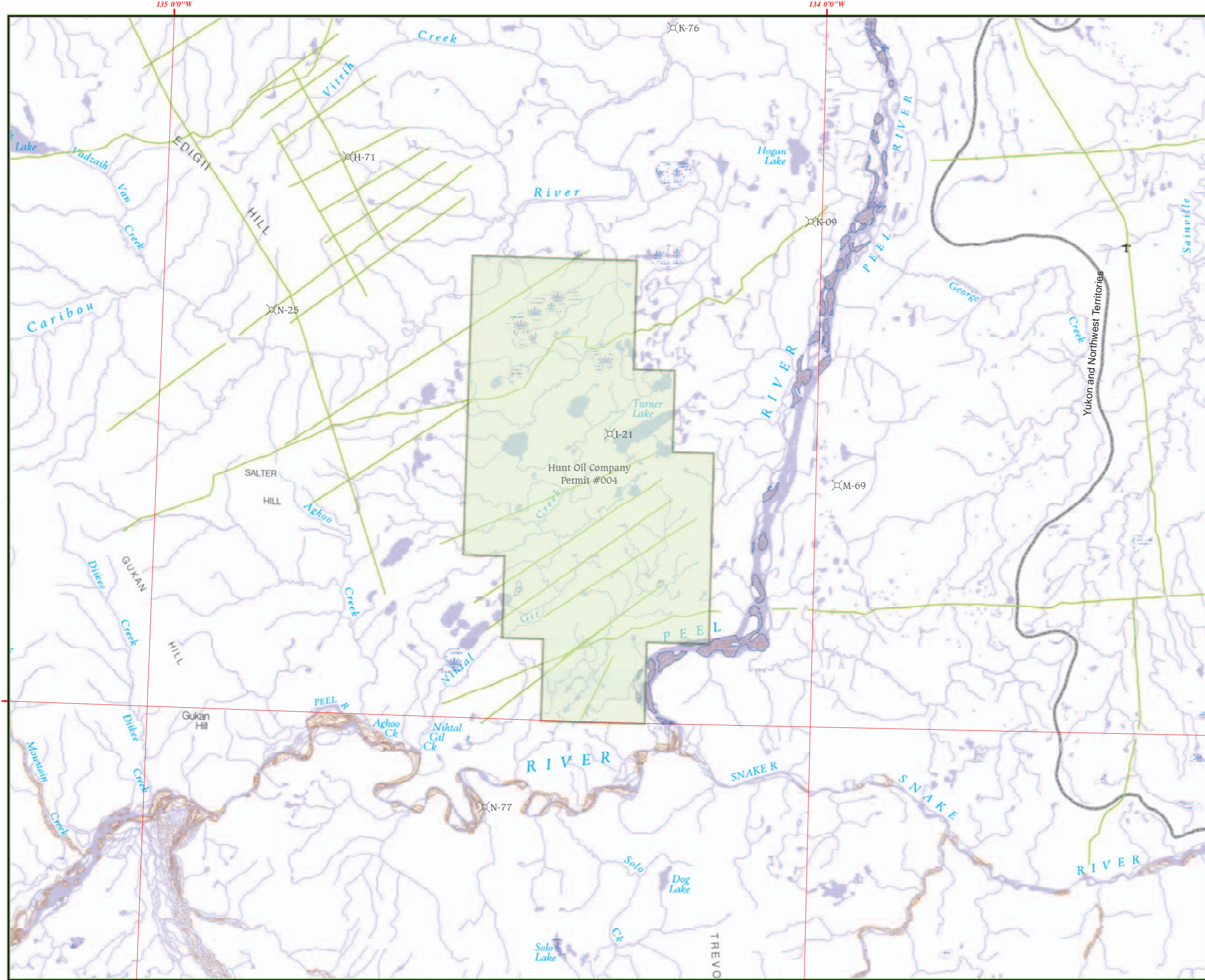
Beaufort - Mackenzie 1:500,000



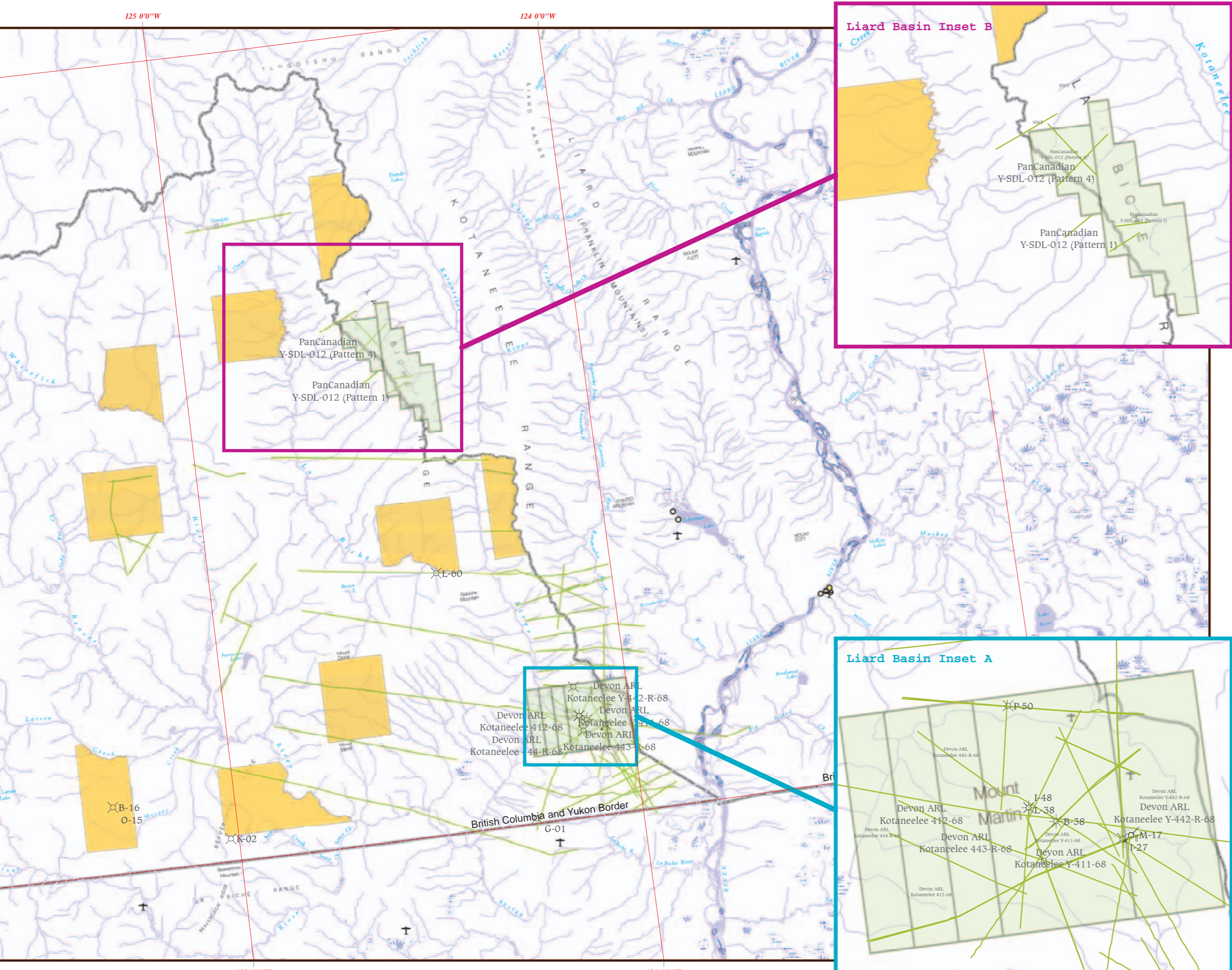
Eagle Plain 1:250,000



Peel Plateau 1:250,000



Liard Basin 1:500,000



Oil and Gas Dispositions and First Nation Lands Within the Yukon

For illustrative use only. Not to be used for legal or regulatory purposes.
Some features may appear to overlap or be inaccurately positioned. Feature positional accuracy is dependent on source data and collection method. The data source and positional accuracy information refer to the individual metadata records.



Data Sources and Descriptions

Oil and Gas information is freely distributed by the Yukon Government Oil and Gas Management Branch for more information visit: <http://www.yukon.ca/energy>

The National Topographic Data Base (NTDB) comprises digital vector data sets that cover the entire Canadian landmass. This product includes distance themes such as hydrography, topography and the road network.

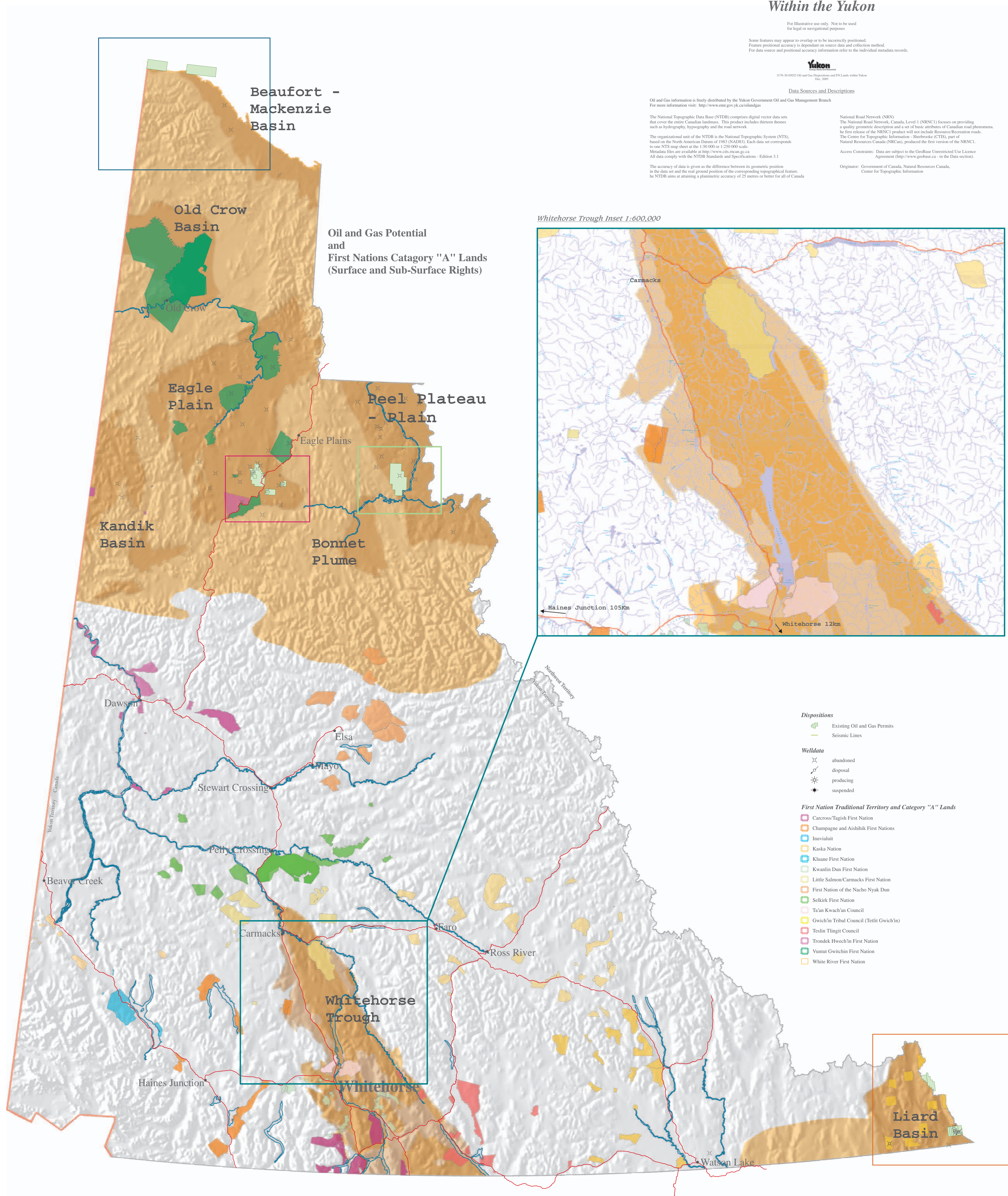
The organizational unit of the NTDB is the National Topographic System (NTS), based on the North American Datum of 1983 (NAD83). Each data set corresponds to one NTS map sheet at the 1:50,000 or 1:250,000 scale. Metadata files are available at: <http://www.cdn.geomatic.ca>

All data comply with the NTS Standards and Specifications - Edition 3.1

The accuracy of these data is the difference between the geographic position in the data set and the real ground position of the corresponding geographical feature. In the NTDB area an average positional accuracy of 25 metres is held for all of Canada.

National Road Network (NRS)
The National Road Network, Canada, Level 1 (NRSCL1) datasets are providing a quality geospatial description and a set of basic attributes of Canadian road phenomena. The format of the NRSCL1 vector file will be Interchangeable Business Objects (IBO). The Centre for Geographic Information - Sherbrooke (CGIS) part of Natural Resources Canada (NRC) produced the first version of the NRSCL1. Access Conditions: Data are subject to the Geobase Open Access Licence Agreement (<http://www.geobase.ca>) in the Data section.

Originator: Government of Canada, Natural Resources Canada, Centre for Geographic Information



Whitehorse Trough Inset 1:600,000

