

Park Journal



PARC NATIONAL DES Grands-Jardins

2007-2008 Edition



THE GRAND TOUR OF QUÉBEC'S NATIONAL PARKS



Environmental protection is at the heart of the concerns of our society. Not a day goes by without this topic being discussed in the media and public forums. In addition to adhering to the strict conservation mission of national parks, Sépaq has chosen to adopt an ecological approach in the day-to-day management of territories.

Most of the good practices implemented aim to reduce energy consumption, drinking water consumption, and greenhouse gases emissions associated with the improvement of and access to national parks.

Among the many actions taken to improve our management-related environmental scorecard, mention may be made notably of the residual material management program, the use of 100% post-consumption recycled paper, the reduction of our fleet of vehicles, greater reliance on public transit services, the use of solar energy, better

water management by controlling shower utilization times, the use of biodegradable household products, and the reduction of grass-covered surfaces.

We would like to thank all Quebecers and visitors from outside Québec who have chosen to frequent national parks over the last seven years.

Your comments have enabled us to improve our approaches as well as the range of activities and services that we offer. Your many visits, close to 3.6 million visit-days in 2006, have encouraged us to offer you, on a daily basis, a high-quality "Park Experience" tailored to your needs. Continue to inspire us... For our part, we promise to keep up our work: promoting the discovery of and access to Québec's most beautiful protected natural heritage while ensuring an acceptable minimum impact.

National parks are here for you to enjoy!

Discover our regional parks



Raymond Desjardins
 Raymond Desjardins
 Vice-president of Operations
 Parcs Québec

Yvan Bédouin
 Yvan Bédouin
 President and CEO
 Sépaq

A Word from the Director

On behalf of the entire Park team, it is my pleasure to welcome you to Parc national des Grands-Jardins, created to preserve this exceptional territory while making it accessible to the public. Less than two hours from Quebec City, this *window on Northern Québec* never ceases to amaze visitors. The change of scenery provided by the taïga found at the very heart of the park is surprising. Take time out for a guided tour with a park warden to see for yourself. You won't regret it! You simply must discover the unique Charlevoix landscape as seen from the summit of mont du Lac des Cygnes. Wonder at the lonesome cry of the loon as you paddle your canoe, or enjoy superb trout angling during a memorable fishing trip with family or friends.

During a recent poll, visitors gave the park a 95.8 % rating for the beauty of its landscapes and 94.8 % recommended their friends and relatives visit Grands-Jardins park: the love story between park and visitors goes on!

Claire Ducharme, *director*

The mission of Parcs Québec

With a view to achieving harmonious development at the cultural, social, economic and regional levels, Parcs Québec is responsible for the conservation and development of territories that are representative of Québec's 43 natural regions or exceptional sites, while ensuring that they are accessible for educational and outdoor use.

All of Québec's national parks were created in accordance with World Conservation Union standards. The criteria are defined as follows :

- A relatively vast area that represents one or more ecosystems that are moderately or not at all transformed by exploitation;
- Where animal and plant species, geomorphological sites and habitats are of particular interest from a scientific, educational or recreational viewpoint, and that offers scenery of great beauty;
- In which the highest competent authority of the country has taken measures to eliminate exploitation and to instil respect for the ecological, geomorphological or aesthetic aspects, on the whole;
- Where a visit is authorized, under certain conditions, for educational, cultural or recreational purposes.



Summary

- 2 General information
- 3 Be alert! (Ouvrez l'œil)
- 4 Outdoor activities
- 6 Maps
- 8 Discovery activities
- 10 Did you know ?
- 11 Winterland
- 12 Lodging and rates

 **Parc national
des Grands-Jardins**
Protect and Discover.

25, boul. Notre-Dame
Clermont G4A 1C2
(418) 439-1227
Information : 1 800 665-6527
www.parcsquebec.com
parc.grands-jardins@sepaq.com

DRAFTING COMMITTEE :
Claire Ducharme, Sandra Garneau,
Rémi Bouchard, François Fortin

PHOTOS : Steve Deschêne, Antoine Nappi,
Maurice Pitre, Jean Sylvain, Jean-Pierre
Huard, Michel Gauvin, Maxim Larivée,
Jose Carlos Ferreira, Yolande Roy and Sepaq

GRAPHIC DESIGN : Lico Imprimeur

PRINTING : Imprimerie Québecor

TRANSLATION : Gary Callaghan



This document was printed on 100 % recycled paper made in Québec, containing 100% post-consumption fibres and produced without using elementary chlorine. The inks used for this production contain vegetable oils.

General information

■ PARC OPERATING SEASON

The park is open year round. Services offered vary according to seasons. Inquire. The park's staff will be glad to inform you.

■ INFOS-PARK

Area : 310 square km

Created : 1981, By virtue of the « Loi sur les parcs ».

Mission : Presevation of a caribou herd and of an outstanding example of a Nordic ecosystem.

Highest Point : Mont de l'Enfer, summit altitude 1100 m.

Number of lakes : More than 120, most of which are of glacial origin.

■ THOMAS-FORTIN SERVICE CENTRE

Open from May 25 to October 8, 2007

Access via Route 381 at km 31

Reception and information

Registration : Access fees, fishing, camping, lodging and discovery activities.

Nature Boutique – Convenience store

■ MONT DU LAC DES CYGNES VISITOR KIOSK

Open from mid-May to mid-November, during the Christmas Holidays and on weekends in February and March.

Route 381, at km 21

Reception and information

Access fees

Nature Boutique – Convenience store

■ PARK REGISTRATION

Authorization to access the Park is mandatory at all times. It can be obtained at the Service Centres or from one of the four self-registration terminals located at the Thomas-Fortin Service Centre, the mont du Lac des Cygnes visitors kiosk, La Galette or at Le Pied-des-Monts campground.



■ PLEASE TAKE NOTE

Methods of payment: Cash, Visa, MasterCard, American Express and Diners Club.

Important : Debit card service is not available in the park.

Telephone and electricity : There are neither public telephones nor electricity in the park. Cellular phones only work in the park in the mont du Lac des Cygnes visitors kiosk parking lot.

Fire hazard warning : Check the fire hazard risk level before lighting your campfire and only make fires in designated areas..

■ REGULATIONS

In the park, adopt ecological practices and refrain from :

- bringing any pets;
- killing, wounding or feeding any animals;
- disposing of trash anywhere in the environment or burning it;
- damaging or introducing any tree or plant;
- gathering dead wood;
- leaving any food or dishes lying about.

You will thus significantly contribute to the park's mission of conservation.



La Laiterie Charlevoix

since 4 generations

Cheese Economuseum

Demonstrations of production and exhibition of old cheese-making equipment.

- Fresh daily cheddar cheese curds and wheel cheese
- Soft cheese (Le Fleurmier)
- Aged cheddar (Vieux Charlevoix)

- Sour milk curdled and homestyle cream
- Cheese of Artisans of Quebec

Most products on the Flavor Trail are available at the counter.

Open 7 days a week

from 8am to 5pm (winter)
from 8am to 7pm (summer)



1167, boul. Mgr. De Laval
Route 138
Baie-Saint-Paul, Québec
G3Z 2W7

(418) 435-2184

www.fromagescharlevoix.com

Be alert! (Ouvrez l'œil !)



Mr. Jose Carlos Ferreira had quite a surprise in August, 2006 when he came face to face with a lynx in La Pinède trail.

■ YOU'RE BEING WATCHED...

Bear, moose, caribou, lynx, loons and grouse are plentiful in Grands-Jardins park. Dawn and dusk are the best times to observe wildlife. You will have to be patient and avoid being detected to savour the joy of sighting a wild animal. A wide number of species frequent forest edges, streams and lakes. Still nothing? Passing animals always leave tracks. Some even let you know you are in their territory by leaving some! Droppings, tracks, chewed bark and stems, all are proof that the forest is teeming with life! Do not hesitate to share your sightings with us!

■ WHAT TO DO IF YOU ENCOUNTER AN ANIMAL

That depends on whom you have to deal with! The Golden Rule is to keep your distance. This will give you a few extra seconds to enjoy this encounter, and especially, it will prevent the situation from deteriorating. Do not forget that, in general, wild animals avoid coming in contact with human beings. Even though most of the time, their reaction is to flee, the simple fact of coming closer, your eye glued to your viewfinder with your outstretched hand holding your last bite of sandwich could trigger a defense reaction from the animal who is perhaps encountering Japanese equipment or *végé-pâté* for the first time! Make sure the animal you have just surprised has a path it can use to retreat, avoid making any abrupt gestures, and observe quietly...

The black bear, very common in Grands-Jardins park, is an animal with which it is particularly important to apply these rules of caution. Check the schedule of the talk entitled "*Ours noir : gros, grand, mais pas méchant !*" p. 9 to find out more about the black bear's habits.

■ THE BEAVER : A DISCREET, BUT UNMISTAKABLY FELT PRESENCE!

Most active at dawn and towards nightfall, beavers can pass unnoticed. The effects of their activities are nevertheless very visible: besides the presence of beveled tree stumps, a hut and a dam, the creation of ponds and flooded banks are all signs of their presence. Although beavers prefer to live near rich, broad-leaved tree stands, the many individuals who live in Grands-Jardins park have proved that they can very well adapt to Mountain Ash, Labrador Tea plantations and Serviceberry!



Caribou hoof print, Taiga trail, October 7th, 2006.



Beaver hut at Lac à Poux.

Recycle! It's important...

Glass... **Metal...** **And plastic...**

...are recyclable. Thank you for contributing to the protection of the environment by putting your containers in the tube provided for this purpose, in all national parks in the Parcs Québec network.

A colorful illustration for a recycling poster. It features a green recycling symbol at the top right. Below it, three cartoon characters are shown: a boy pointing up, a girl putting a glass bottle into a green recycling bin, a boy holding a metal can, and a girl holding a plastic bottle. A speech bubble from the girl with the plastic bottle says, "...are recyclable. Thank you for contributing to the protection of the environment by putting your containers in the tube provided for this purpose, in all national parks in the Parcs Québec network." The background is white with green accents.

Outdoor activities

HIKING TRAILS

35 kilometres of trails give you access to a "window on Northern Québec" less than two hours from Quebec City. Summit, Taïga, Subalpine mountain vegetation are all yours for the choosing.

TRAIL	LENGHT AND DURATION	TYPE	DEGRÉ DE DIFFICULTY	MEETING POINT
MONT DU LAC DES CYGNES* : Without doubt Charlevoix's most popular trail. This hike takes you to a height in excess of 980 metres and provides a spectacular view on the "vallée du Gouffre", Baie-Saint-Paul, the south shore and Charlevoix's meteoritic crater. During the climb, you will encounter subalpine mountain vegetation.	5,2 km 3 hrs	Round trip	Difficult 500 m elevation	Mont du Lac des Cygnes visitors kiosk on Route 381 at km 21
LE PLOUI** : This path, for the most sports-minded, also leads you to the top of mont du Lac des Cygnes. A long loop that encompasses mont de l'Ours and is well worth the detour. Subalpine mountain vegetation, Pioui lake and a stroll on the crests are the highlights.	9,9 km 5 hrs	Loup	Difficult 500 m elevation	Mont du Lac des Cygnes visitors kiosk on Route 381 at km 21
LE BORÉAL** : The Boreal introduces you to the flora and fauna of the taïga. This magnificent trail snakes through a forest regenerating itself since the 1991 forest fire.	1,9 km 1 hrs	Loup	Easy	Centre d'interprétation Interprétation Centre, Route 60 at km 9
LA PINÈDE** : A stroll through the remnants of the Ice Age including a grey pine forest and an exceptional variety of lichens. The nordic lake and burnt forest scenery will amaze you.	5,3 km 3 hrs	Loop	Easy	Château-Beaumont Interprétation Centre, Route 60 at km 9
DE LA CHUTE** : A journey through a very typical taïga with an overview of the Malbaie river and a stop at Hume-Blake falls.	5 km 3 hrs	Round trip	Easy	Route 60 at km 20
LE GROS PIN* : Short hike in a mixed forest and a magnificent view on the rocky cliffs of the Laurentian foothills. Discover which tree the trail was named after.	1,8 km 45 min.	Loop	Easy	Pied-des-Monts campground on route 381 at km 21
LE PIONNIER** : Reopened in 2006, this trail allows us to discover the banks of the Petite rivière Malbaie, extraordinary moss carpets and luxuriant vegetation.	5,6 km 2 hrs	Round trip	Easy	Étang Malbaie campgroung via Route 381 at km 34.5
LE POMMEREAU** : Short trail that links La Roche campground and La Pinède trail.	1,9 km 1 hrs	Round trip	Easy	La Roche camproung on Route 60, at km 13 Or via La Pinède trail

* Open year round.

** Open May 26 to October 8, 2007.

*** Open June 22 till November 1.

■ **CLIMBING** : At mont de l'Ours and at mont du Gros-Bras. Use and stay in the access trails.

■ **BIKING** : Biking is limited to park roads. Bike rental is at Arthabaska lake.

■ **CANOEING AND KAYAKING** : Take advantage of the park's lakes to enjoy these activities. Equipment rental is at Arthabaska lake.



Your guests, Nicolas et Josée

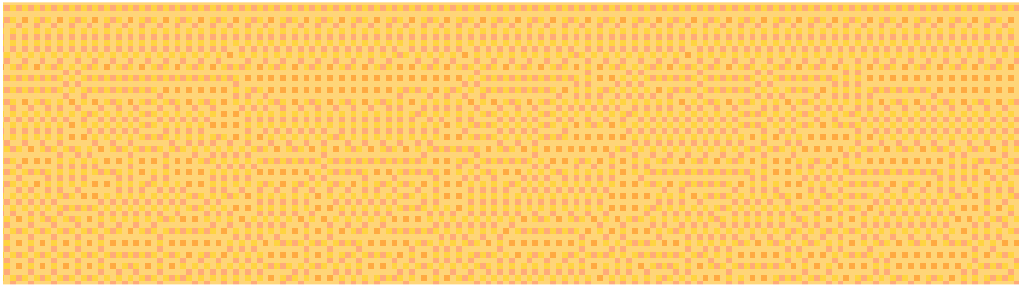


- 16 rooms non smoking, clean and renovated
- 1 family room (5 to 7 pers.)
- Fridge, AC, balcony
- Free Wireless Internet (high speed)
- Motorcycle shelter
- In heart of Baie-St-Paul



29, DE LA LUMIÈRE STREET (362 ROAD) BAIE-ST-PAUL
(1-877) 435-3540 AUXPORTESDUSOLEIL.COM

« Warm Hospitality and european charm »



■ FISHING

At the beginning of the 20th century, Grands-Jardins park is a well-known fishing paradise. One hundred years later, it still is. Native brook trout still await you.

Many options are available to anglers. Daily fishing, camping and fishing packages, or the summum : fishing and lodging in a cabin. The choice is up to you!

You can rely on our expert guides for sound advice throughout your stay. Bring your rod, your favourite lures, your provincial licence and your good humour. We'll take care of the rest.

Fishing in Grands-Jardins national park is magic.

■ NATIVE TROUT ONLY

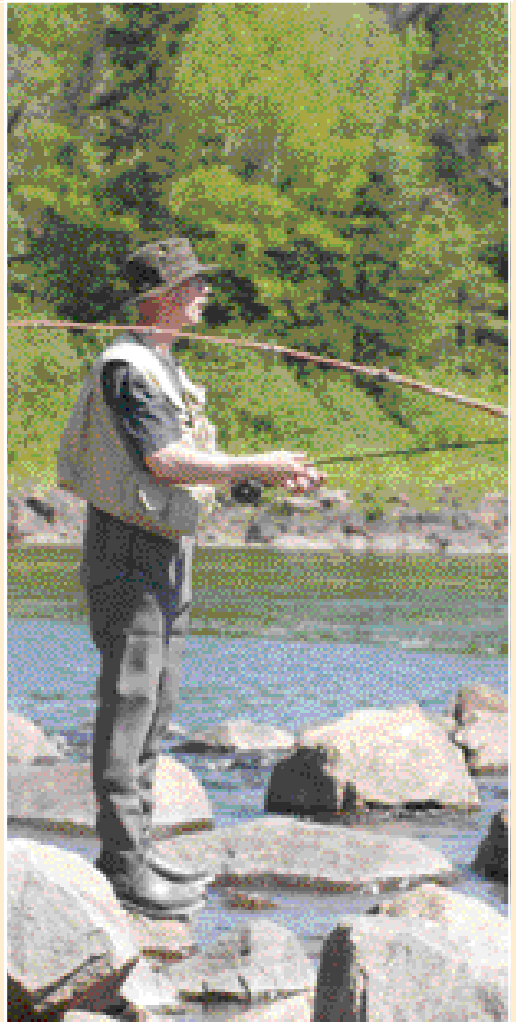
The Grands-Jardins team is proud to offer fishermen native trout only. No stocking is necessary. Thirty years of keeping statistics, of close management and of close cooperation with fishermen have ensured the preservation of this riches to this day and for future generations.

■ SPECKLED TROUT OR ARCTIC CHAR?

Speckled trout and Arctic char are the only two species of fish that inhabit Grands-Jardins national park's lakes. Arctic char is a species considered at risk in Québec, and deserves all our attention. Help us protect it by registering it separately in your daily catch.

■ NEW FOR 2007

Come practise wading fishing on the Malbaie river, off Route 60, between km 14 and 16. Several fishing sites and access trails were opened up. Wading fishing, a sport to be rediscovered.



THE GREAT OUTDOORS AND CONSERVATION - THE 7 PRINCIPLES OF *Leave No Trace Canada*

Because its role encompasses more than conservation alone, Parcs Québec wants to use every possible occasion to foster support among visitors to its national parks for the adoption of ecologically responsible practices in outdoor activities. This is the reason Parcs Québec is proud to have chosen to promote the principles of *Sans trace*, the french version of the popular American *Leave No Trace* program. This code of outdoor ethics is based on the following seven principles:

- Plan Ahead and Prepare
- Travel and Camp on Durable Surfaces
- Dispose of Waste Properly
- Leave What You Find
- Minimise Campfire Impacts
- Respect Wildlife
- Be Considerate of Other Visitors



These principles are of course inherent in the regulatory framework that governs our national parks.

At the same time, awareness and application of *Leave No Trace* values in every single one of our outdoor activities, even the most unnoteworthy among them, can help reduce their impact on our natural environment.

To learn how you can best play your part inside Québec's national parks, you can consult www.parcsquebec.com, and click on the *Conservation Missions* tab.

To find out more about *Leave No Trace*, go to www.aventure-ecotourisme.qc.ca, choose English, then click on the *Leave No Trace* tab.

Park and hiking trail map



ZONES

- Environment
 - Preservation
- This product contains geographical information provided by the ministère des Ressources naturelles du Québec's topographical data base (1/20000).

KEY

- | | | | | | |
|--|---|--|--|--|------------------------|
| | Visitors Center / Firewood | | Hut / Cabin | | Shelter |
| | Parking area / Interpretation | | Picnic / Serviced picnic area | | Pump-out station / Ice |
| | Convenience store/ Nature Boutique | | Rustic campground / Group campground | | Provincial Road |
| | Water (non drinkable) / Water (drinkable) | | Serviced campground / Equipment rental | | Major Road |
| | Shower / Paying shower | | Kayaking / Canoeing | | Secondary Road |
| | Toilet / Dry toilet | | Cycling / Hiking trails | | Hiking trails |
| | | | | | Fishing trails |
| | | | | | Winter trails |



Answer the woodpecker's call

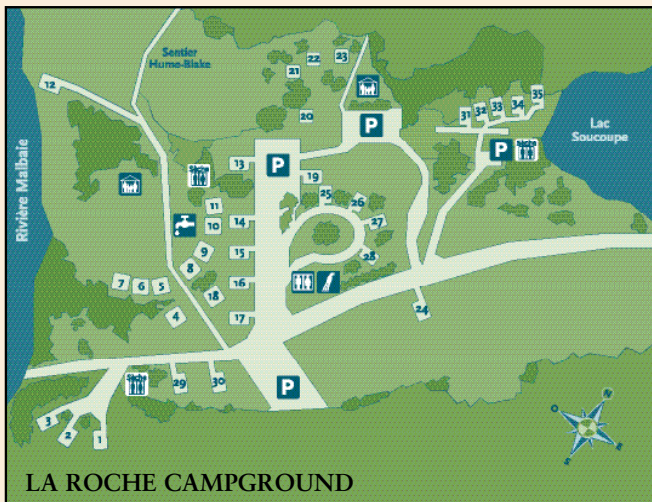
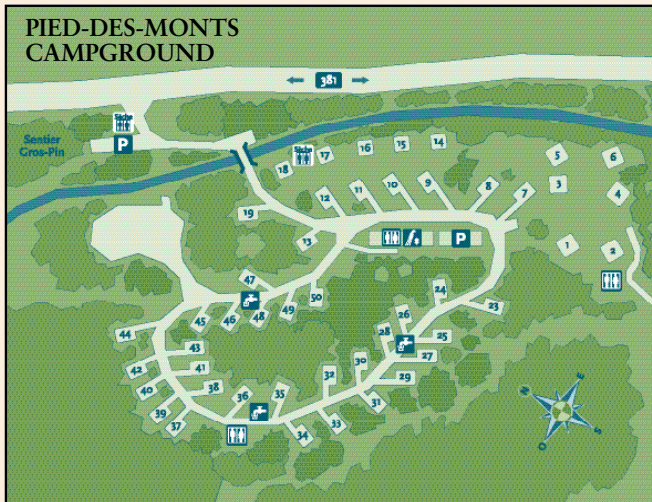
A few kilometres from parc national des Grands-Jardins.

A world of contrasts to discover by riverboat, rabaska, by bike, by canoe, on foot and while camping.

1 800 665-6527



Campground maps



BUY NATURE

Did you know that Parcs Québec "Boutique Nature" stores offer a wide range of souvenirs, clothing, and nature discovery products?

And now, to gradually eliminate the use of plastic bags in its network, Parcs Québec is offering reusable bags – a tangible way of helping preserve our precious environment!

100%

recyclable
reusable
made in Québec
ecological
environmentally friendly



Visit our virtual boutique at ParcsQuebec.com

ALL PROFITS ARE REINVESTED IN THE PARKS TO ENSURE THEIR PRESERVATION.





Discovery activities

Taking part in a discovery activity is a guarantee of pleasure for the senses; the joy of discovering the infinitely big, the infinitesimal, the invisible, the indescribable ...

Information and reservations :
on site, at the Thomas-Fortin Service Centre or by telephone at 1 800 665-6527.

Guided hikes :

■ RANDONNÉE GRAND NORD

A single day to discover the park obviously isn't enough. However, in the company of an experienced guide, you can take in its most beautiful attractions and discover its colourful history. In the morning, a five kilometre hike will take you right into the heart of the taïga : an exceptional ecosystem and one of park's reasons for being. In the afternoon, the adventure goes on by canoe on lake Turgeon. A memorable day awaits you! The package includes dinner, transportation and the company of a park warden. You must bring drinking water, hiking shoes, a lunch and some warm clothes.

Meeting point : Maison Chez Laurent in Baie-Saint-Paul. Maximum number of 6 people. Special rates for park campers. Reservations are mandatory.

■ TAÏGA : PAYS DE LICHENS ET DE CARIBOUS (Reserve early!!!)

A total scenery change a mere two hours from Quebec City! Come and hike in a very special atmosphere, in a trail accessible only in the company of a park warden. Discover the many facets of the Grands-Jardins taïga : see traces of the last ice age, wonder at the fascinating world of lichens and learn how all-important they are to the caribou.

Meeting point : Château-Beaumont. Limited participation. Transport included.

■ CLIN D'ŒIL BORÉAL

This hike helps you discover the ingredients that make the Boreal forest a unique habitat, the varieties of plants and animals that call it home as well as the natural catastrophes that affect it. Have you ever walked in an area devastated by a forest fire? You'll be amazed at the life you'll find there. The trail runs alongside a magnificent river where there are frequent sightings, both big and small. Welcome one and all! **Meeting point :** Château-Beaumont.

■ LES PIONNIERS DES GRANDS-JARDINS

This quiet outing on lake Turgeon will bring you back in time to the rude but colourful universe of the woodsmen and very first explorers of parc des Grands-Jardins. A wonderful family outing. **Meeting point :** Château-Beaumont. Limited participation. Reservations are mandatory.

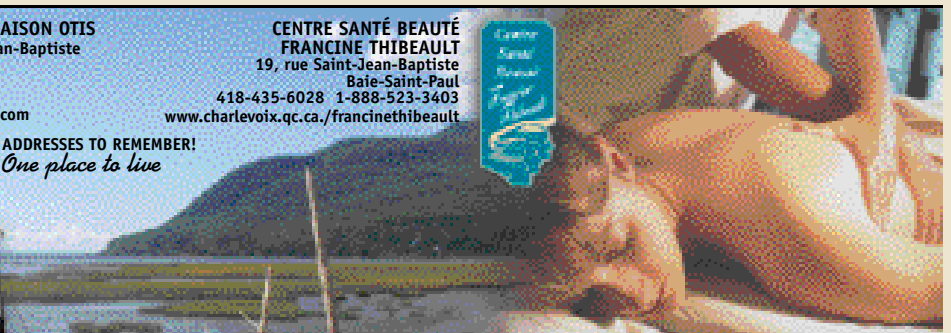
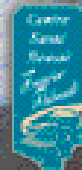


La Maison
OTIS
Auberge

AUBERGE LA MAISON OTIS
23, rue Saint-Jean-Baptiste
Baie-Saint-Paul
418-435-2255
1-800-267-2255
www.maisonotis.com

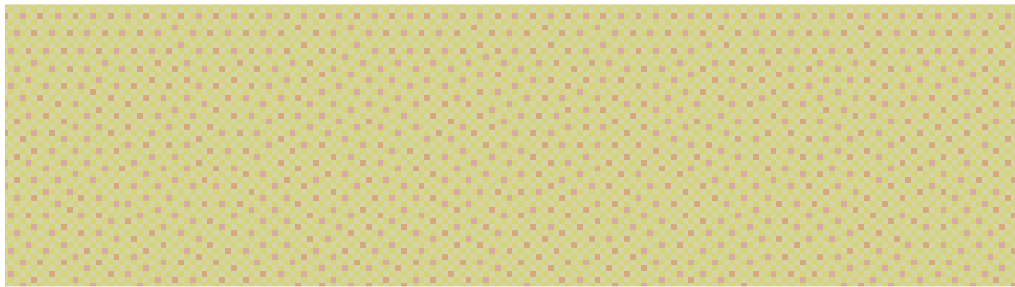
TWO ADDRESSES TO REMEMBER!
One place to live

CENTRE SANTÉ BEAUTÉ
FRANCINE THIBEAULT
19, rue Saint-Jean-Baptiste
Baie-Saint-Paul
418-435-6028 1-888-523-3403
www.charlevoix.qc.ca./francinethibeault



15 MINUTES BY FOOT FROM THE BEACH.

A stay with us insures beauty comfort and relaxation.



SCHEDULE OF ACTIVITIES : June 22 to August 19, 2007

DAY	TIME	ACTIVITE	DURATION	RATES
Monday	9:00 a.m.	Taïga: pays de lichens et de caribous	2 hrs 30 min.	\$ 16.00
Tuesday	11:30 till 2:00 p.m.	Un sommet témoin du passé	15 min.	Free
	3:15 p.m.	Les Pionniers des Grands-Jardins	1 hr 15 min.	\$ 4.39
	7:00 p.m.	Ours noir : gros, grand mais pas méchant !	1 hr	Free
Wednesday	10:00 a.m.	Clin d'œil boréal	1 hr 15 min.	Free
	1:00 p.m.	Taïga : pays de lichens et de caribous	2 hrs 30 min.	\$ 16.00
	7:00 p.m.	Le caribou des bois, seigneur des Grands-Jardins	1 hr	Free
Thursday	9:00 a.m.	Taïga : pays de lichens et de caribous	2 hrs 30 min.	\$ 16.00
	3:15 p.m.	Les Pionniers des Grands-Jardins	1 hr 15 min.	\$ 4.39
	7:00 p.m.	Ces paysages qui nous enflamment !	1 hr	Free
Friday	8:30 a.m.	Randonnée Grand Nord	7 hrs 30 min.	\$ 65.00
	11:30 till 2:00 p.m.	Un sommet témoin du passé	15 min.	Free
	1:00 p.m.	Taïga : pays de lichens et de caribous	2 hrs 30 min.	\$ 16.00
	7:00 p.m.	Ours noir : gros, grand mais pas méchant !	1 hr	Free
Saturday	8:30 a.m.	Randonnée Grand Nord	7 hrs 30 min.	\$ 65.00
	10:00 a.m.	Clin d'œil boréal	1 hr 15 min.	Free
	11:30 till 2:00 p.m.	Un sommet témoin du passé	15 min.	Free
	1:00 p.m.	Taïga : pays de lichens et de caribous	2 hrs 30 min.	\$ 16.00
	7:00 p.m.	Ces paysages qui nous enflamment !	1 hr	Free
Sunday	8:30 a.m.	Randonnée Grand Nord	7 hrs 30 min.	\$ 65.00
	10:00 a.m.	Clin d'œil boréal	1 hr 15 min.	Free
	11:30 till 2:00 p.m.	Un sommet témoin du passé	15 min.	Free
	1:00 p.m.	Taïga : pays de lichens et de caribous	2 hrs 30 min.	\$ 16.00

SCHEDULE OF ACTIVITES : August 20 to October 7, 2007

DAY	TIME	ACTIVITY	DURATION	RATES
Wednesday	11:30 till 2:00 p.m.	Un sommet témoin du passé	15 min.	Free
	1:00 p.m.	Taïga : pays de lichens et de caribous	2 hrs 30 min.	\$ 16.00
Saturday	8:30 a.m.	Randonnée Grand Nord *	7 hrs 30 min.	\$ 65.00
	11:30 till 2:00 p.m.	Un sommet témoin du passé	15 min.	Free
	1:00 p.m.	Taïga : pays de lichens et de caribous	2 hrs 30 min.	\$ 16.00
	6:30 p.m.	Ours noir gros : grand mais pas méchant *	1 hr	Gratuit
Sunday	11:30 till 2:00 p.m.	Un sommet témoin du passé	15 min.	Free
	1:00 p.m.	Taïga : pays de lichens et de caribous	2 hrs 30 min.	\$ 16.00

* Till September 22, 2007 inclusively.

TAXES EXTRA.

Nature Talks :

■ OURS NOIR ; GROS, GRAND MAIS PAS MÉCHANT !

Are they dangerous ? What should you do if you cross paths ? This interpretive talk on the black bear will teach you all about this discrete but widely feared animal and debunk the misconceptions about this magnificent park dweller. **Meeting point :** June 22 till August 19: Le Pied-des-Monts campground (Tuesday) and Château-Beaumont (Friday) and from August 20 to September 22 at Le Pied-des-Monts campground.

■ LE CARIBOU DES BOIS, SEIGNEUR DES GRANDS-JARDINS

Charlevoix caribou are an integral part of the landscape and folklore of les Grands-Jardins. With reason! When the original herd became extinct towards the beginning of the 1900's, around 80 head were flown in from Northern Quebec. Even if the old ways have been replaced by modern technology, the great reintroduction adventure still goes on! **Meeting point :** Château-Beaumont.

■ CES PAYSAGES QUI NOUS ENFLAMMENT !

Have the charred landscapes of the Grands-Jardins surprised you ? You're not too sure if you should find them distressing or charming? What are the consequences of a forest fire on the plants and animals ? So many questions, so many answers! **Meeting point :** Château-Beaumont.

Posted activity :

■ UN SOMMET TÉMOIN DU PASSÉ

At the summit of Mont du Lac des Cygnes, the ultimate vantage point for viewing the Charlevoix crater, a warden will tell you all about the surrounding environment. Find out how the mountains took shape, why the summit is barren and how this mountain blends into the region's past. **Meeting point :** Summit.

School programs

The park now offers two school programs for cycle 2 and cycle 3 elementary classes. For more information, visit the park's Website at <http://www.parcquebec.com> under "List of parks", "Grands-Jardins" and "Interprétation". For information or reservations, call us at 418 439-1227.



Did you know ?

■ ORIGIN OF THE "GRANDS-JARDINS" NAME

The peculiarity of the landscapes, with their lichen fields and rounded off spruce is at the origin of the park's name. As far back as 1872, the term "Gardens" was used to describe the region because of its resemblance with English gardens.

■ THOMAS FORTIN

Thomas Fortin (1858-1941), considered by many as being the best "coureur des bois" of his time, is the most popular figure associated to the Grands-Jardins. For more than fifty years, he traveled the territories of the Laurentides and Grands-Jardins parks and greatly contributed to their development.

In 1875, at the age of 17, he was roaming the woods with the land surveyors for \$ 10 a month. Legend has it that it would take him only 15 days to cross parc des Laurentides from east to west (at the time, former parc des Laurentides included the Laurentides wildlife reserve as well as Parc des Grands-Jardins)

Besides giving his name to the main park reception and to an ecological reserve, an honorary Thomas-Fortin prize is awarded each year at Saint-Urbain's Festival du coureur des bois.

■ THE WORLD AT YOUR FEET

Mont du Lac des Cygnes and mont de l'Ours summits undoubtedly provide a dazzling panorama. But there is more to the riches of these mountains than just the view! Right there, at your feet is an equally stunning world! Far from being a mere carpet with changing colours, the vegetation which covers these summits consists of arctic-alpine plants. The Greenland sandwort, the Pincushion plant (*Diapensia Lapponica*) and Bigelow's sedge, to name but a few, grow in an extremely thin ground, that is also poor in minerals and extremely dry. Moreover, the winds that blow constantly during winter prevent the snow from forming a protective cover. Another factor which makes life hard for summit vegetation is boot soles. The delicate roots and the soft green stalks do not match up to space-age materials! So keep your eyes peeled and watch where you step!



KARINE LAVOIE,
receptionist at parc national des
Grands-Jardins since 2002,
was chosen employee of the year 2006
by her work colleagues.

*Congratulations Karine, and thank you
for your dedication to customer service,
your helpfulness and your radiant smile.
All the best for the 2007 season!*

AVENTURE ÉCOTOURISME QUÉBEC

The outfitters, members of Aventure Écotourisme Québec, in collaboration with Sépaq, offer you several stays and guided activities especially conceived for having you discover exceptional natural spaces.

AEO groups together more than one hundred producers in adventure tourism and in ecotourism that join forces for offering you high-quality products.

Consult the Association's website for planning your guided activities in Sépaq's national parks, wildlife reserves and tourist centres.

For more information on the Association and his members:
www.aventure-ecotourisme.qc.ca

Sépaq

de la MRC de Charlevoix
CENTRE LOCAL DE DÉVELOPPEMENT
cld@cld-charlevoix.org
www.cld-charlevoix.org

Our true
Nature
Local development!

**Municipalité régionale de
comté de CHARLEVOIX**
mrc@charlevoix.net
www.mrc-

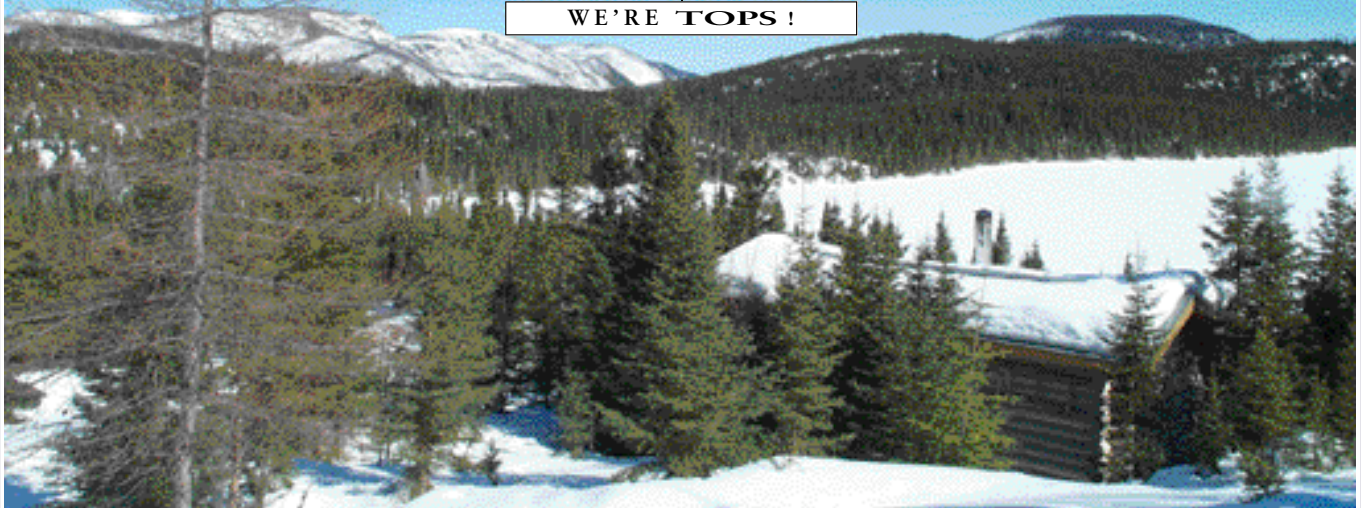
Winterland



WINTER IS GUARANTEED IN PARC NATIONAL DES GRANDS-JARDINS

SNOWSHOEING	LODGING :
SKIING	Hut
ICE FISHING	Rustic Shelter
	Cabin

WE'RE **TOPS** !



OUR GREEN APPROACH TO THE DAILY MANAGEMENT OF NATIONAL PARKS

Sépaq thinks and acts green in managing the national parks under its care. It knows how important national parks are to the success of sustainable development and lets this guide every environmental decision it makes. Concrete measures include:

- An ecological integrity program to monitor the state of health of parks
- More and more buildings powered by solar energy
- Public transportation in the Hautes-Gorges-de-la-Rivière-Malbaie, Gaspésie, Jacques-Cartier and Oka national parks
- Electric vehicles in the Oka and Îles-de-Boucherville national parks
- Downsizing and rationalization of the vehicle fleet
- Reduction in drinking water consumption in campgrounds thanks to water meters in showers
- A waste management program
- Progressive discontinuation of the use of plastic bags for consumers
- Promotion tools printed on 100% postconsumer paper
- Biodegradable household products
- Natural or neon lighting

These actions are proof of our commitment to help improve the use of resources and preserve the land for the benefit of current and future generations.

Lodging and Rates

Lodging :

■ CAMPING :

There are over 100 campsites spread out in the park's 4 campgrounds. Open environment in full regeneration, broad-leaved tree or conifer forests, suit your taste for as low as \$15.80 per night. Inquire about our new « rent-and-use », fully equipped tent-trailer option.

■ CABINS :

Why not enjoy the real outdoors in the comfort of our cabins? They come fully equipped and can accommodate from 2 to 12 people. All they need is for you to live them up with your adventure and outdoor stories. Rental starts at \$ 21.33 per person per day.

■ RUSTIC SHELTER :

The picturesque René-Richard rustic shelter that welcomed many of Québec's renown painters is available to everyone since 2004. This jewel will charm you with its style and pristine environment. Capable of accommodating four people, it is available for \$ 28 per person per day.

■ HUTS :

Accessible on foot, on skis or with snowshoes, our two huts (capacity of 6 people each), located to the west of Lac Pointu, are simply irresistible. Stop in for a meal, to rest, or better still, rent them for a night and enjoy the peaceful atmosphere of the area. At \$ 21,00 per person per night, it's a forest getaway at a bargain price!

Rates :

EQUIPMENT RENTAL (taxes extra)			
DESCRIPTION	HOURLY	4 HOURS	DAY
Bicycle	\$ 10.97	\$ 20.62	\$ 29.40
Canoe	\$ 12.51	\$ 24.79	\$ 35.32
Kayak, single	\$ 12.94	\$ 25.67	\$ 36.64
Kayak, double	\$ 17.55	\$ 34.88	\$ 49.80
Life jacket			\$ 4.61
ACCESS FEES (taxes included)			ANNUAL PARK CARD
	DAILY	ONE PARK	ALL PARKS
INDIVIDUAL			
Adult (18 years and over)	\$ 3.50	\$ 16.50	\$ 30.00
Child (6 to 17 years)	\$ 1.50	\$ 7.50	\$ 15.00
Child (5 years and under)	Free	Free	Free
FAMILY			
1 adult with children under 18	\$ 5.00	\$ 25.00	\$ 45.00
2 adults with children under 18	\$ 7.00	\$ 35.00	\$ 70.00



La Roche Camping.



René-Richard Log Cabin.



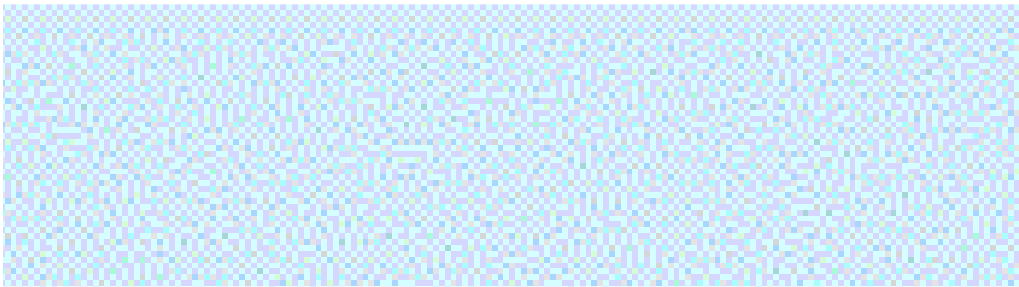
Bois-Vert #2 Cabin.



1493, boul. Mgr.-de-Laval (Road 138)
Baie-Saint-Paul, G3Z 2X6
Tel.: (418) 435-3895
Fax: 435-9927
1 888-437-3895
www.maisonchezlaurent.com
maisonchezlaurent@charlevoix.net

- 7 cottages with fireplace
- 10 motels
- Ancestral house for groups of 8 to 10 people
- Restaurant
- Convenience store
- Golf, cruises, ski or snowmobile packages
- " Les Florents " hiking trail (8.37 km) on site

At the intersection of Route 381, at the entrance to Parc national des Grands-Jardins.




Discover the other nature
of
Charlevoix



Bed/Breakfast
Half way from both Parks
Rooms with private bathrooms



179, rang 6, St-Hilarion
(Québec) G0A 3V0
418.457.3018 / **1.877.457.3018**
www.aubergeinn.com



Take the Mountain Route

A trail of striking beauty that links
Parc national des Grands-Jardins and
Parc national des Hautes-Gorges-
de-la-Rivière-Malbaie.

Tourisme
Charlevoix
www.tourisme-charlevoix.com



Yvon Duchesne & fils
Épicerie & quicallerie

844, St-Édouard, Saint-Urbain
Tél.: 639-2225




Garage Fortin J.R. & Fils inc.
740, St-Édouard, Saint-Urbain
Tél.: 639-2971

OLCO Dernière station avant le Parc !



le Genévrier

CAMPING & COTTAGES

1175, boul. Mgr. De Laval
route 138, Baie-Saint-Paul
G3Z 2X4

(418) 435-6520
1 877 435-6520
www.genevrier.com

435 camp sites
35 cottages 4 seasons
Family destination above all else:
swimming lake, tennis, trails.
Winter : cross-country skiing, snowshoeing, skating and sliding





AT THE BASE OF MONT-SAINTE-ANNE, 30 MINUTES FROM BAIE-SAINT-PAUL
BEAUTIFUL VERY LARGE COUNTRY HOMES FOR RENT!

- A village of 14 fully equipped villas for rent (weekend or week-ends)
- From 8 to 71 people per house
- From 3 to 31 bedrooms per house
- From 2 to 15 bathrooms per house
- Sauna or double Jacuzzis and fireplace in each house
- Full Spa 5 minutes away

(418) 826-3331
Toll free : 1 866 604-2815

You can find each house on our website.
www.chalets-village.com

