



**STRATHCONA RE-CHARTING COMMITTEE MEETING**  
**WEB SITE: <http://www.for.gov.bc.ca/dcr/re-chart/index.html>**

ITEM #	AGENDA TOPIC	TOPIC BRIEFING <i>Outline of Discussion/Presentation; Define Problem</i>	ACTION
1.0	<b>APPROVE PREV. MINUTES</b>	No changes to the previous minutes.	
2.0	<b>APPROVE AGENDA</b>	<p>Introductions</p> <p>Data Sharing (Jennifer Naylor)</p> <p>Phase 1 – short term solutions (Aat’uu/Raven)</p> <p>Phase 2 - data</p> <p style="padding-left: 20px;">- long term (10 year)</p> <p>No changes.</p>	
3.0	<b>OLD BUSINESS</b>		
3.1	Starting Up	<ul style="list-style-type: none"> <li>• Suggestion: form East and West coast subgroups.</li> <li>• Data needs: existing apportionment; WL expansion volumes; TSA maps pre-reallocation and current situation; FN takeback volumes; FN traditional territories maps; previous 20-year plan analysis for longer-term work.</li> <li>• Raven requests move from Call Inlet (Loughborough) for economic reasons, identified short-term need 64,000 m3 – preference to cut all at once.</li> </ul> <p>Hecate requests own Chart Area to sustain 55 000 m3/year cut with reasonable economic opportunity, identified short-term need 120,000 m3. <b>ACTION: Pam Silver to provide MoFR data.</b></p>	<b>CARRIED FWD</b> Pam Silver
4.0	<b>NEW BUSINESS</b>		
4.1	Introductions	Welcome Jennifer Naylor who will be presenting a ‘quick tips’ sheet on how external government clients can get data from government. Welcome Erin Boelk from our Tenures team, and Lynda Ostashek, our scribe.	
4.2	Data Sharing (Jennifer Naylor)	<p>This ‘quick tip’ sheet is provided in order to assist clients of the Campbell River Forest District (CRFD) to gain access to the most accurate data or information needed for forest operations. <b>Attached in the tip sheet.</b> This is a work in progress; however, the key points are:</p> <ul style="list-style-type: none"> <li>◆ Make Contact</li> <li>◆ Be Specific</li> <li>◆ Provide Context</li> <li>◆ Do Your Homework</li> <li>◆ Provide Feedback</li> </ul> <p><b>Key Messages:</b> When requesting information from Jennifer please initiate the request via email. Her email address is <a href="mailto:Jennifer.Naylor@gov.bc.ca">Jennifer.Naylor@gov.bc.ca</a>. If you have an important issue that requires a higher-level resolution, please direct it to Jennifer and she will push your comments up corporately.</p>	<b>CLOSED</b>

**STRATHCONA RE-CHARTING COMMITTEE MEETING**  
**WEB SITE: <http://www.for.gov.bc.ca/dcr/re-chart/index.html>**

ITEM #	AGENDA TOPIC	TOPIC BRIEFING <i>Outline of Discussion/Presentation; Define Problem</i>	ACTION
4.3.1	Phase 1 (short term solutions) – Aat’uu	<p>Aat’uu has legally acquired FL A19236 as of March 2007, and contracted Capacity Forest Management to act in their interest. Based on a meeting with Doug Meske, Marty is trying to find a foundation for them to cover the next five year period at 50 000 cubic metres per year. Currently they just have the 55 000 cubic metres under cutting permit.</p> <p>There has been lots of activity in the east side of Port Eliza. There are heli blocks in the Weasel Creek area; however, the result of the heli tour indicates there may not be enough cubic metres to cover off the five years. Aat’uu needs to conduct additional field tours. A GIS analysis and more field reconnaissances are required to determine the viability of this area for Aat’uu. Aat’uu has potential Western Forest Products’ (WFP) negotiation in Barr Creek based on the activity with WFP. They can negotiate on a block-by-block basis. The Board meets monthly and a summary of forestry activities is provided to them. Both Aat’uu and WFP are willing to meet and look for a successful solution.</p> <p>The Espinosa area is one traditionally that has been in Hecate’s chart so will look at previous development for small openings for helicopter, although the logging method is current ground based. They just want to look at the volume for conventional logging for normal profile cut. Map needs updating. Between Port Eliza and Espinosa Inlet, this should solve the cubic metre allotment between a five and ten year term. This is traditional area and there is lots of land and timber available. There has been lots of work done in the background and would like to see the Weasel Creek area stay.</p> <p><b>Action: Next meeting (May 29<sup>th</sup>) provide additional insights and come up with a solution.</b> Need some bounds on the issue. Need to keep in mind the limited land base. We are dealing with traditional area of interest. An analysis and field verifications will be conducted in the next couple of weeks. The forest licence is shrinking and we need a workable solution in the short term. Will discuss the idea between each group on whether it has to be a defined chart area or a floating volume. <b>Action: Marty to prepare a letter confirming this issue.</b> Flexibility is everything. They will be reviewing the proposal over the next couple of weeks and if proceeds will share the preliminary results with the group.</p>	<b>CARRIED FWD</b> Marty Locker
4.3.2	Phase 1 (short term solutions) – Raven	<p>During the last meeting the group looked at some unencumbered areas in Sayward for Raven. Raven has looked and MoFR has clarified. In the meantime, commitments to First Nations are the bottom line. For Raven, they can see the Pye and Stella Lake areas giving them two years of 20 000 cubic metres. There is no longer a simple solution as there are other First Nation (Cape Mudge and Campbell River) interests in that area. Other licensees offered assistance to Raven to identify options. <b>Action: Raven to review options with Erin (tenures) and provide letter of intent to District Manager if interested in Sayward.</b></p> <p>Interfor assertion that small business blocks are NOT off limits. Interfor assertion woodlots given excessive THLB for cut level. <b>Action: Pam to review boundary line between Interfor Chart Area and proposed woodlot boundaries. Action: Invite Rory to next meeting.</b></p>	<b>CARRIED FWD</b> John Howe

**STRATHCONA RE-CHARTING COMMITTEE MEETING**  
**WEB SITE: <http://www.for.gov.bc.ca/dcr/re-chart/index.html>**

ITEM #	AGENDA TOPIC	TOPIC BRIEFING <i>Outline of Discussion/Presentation; Define Problem</i>	ACTION
4.4	Phase 2 (data; long term solutions)	<p>Robin provided a handout, which was a compilation of the three sheets that Pam had provided at the previous meeting. Sheet 1 was the allocation of cut, the other was the Strathcona expansion and the third was the apportionment and commitments split wood by supply block.</p> <p>Forest Licence replaceable. Balances with report on page 2. <b>Questions:</b> Where is it? What is it? Does it account for takeback volume below grey line? What is that volume? Where is it located? Shown as located in Kyuquot. If related to apportionment, then it is a takeback area. Takeback associated with long term Allowable Annual Cut (AAC). Takeback is all being given out as non-replaceable licences. All are five-year terms. Cut given to First Nations in five-year terms.</p> <p><b>Actions</b></p> <ul style="list-style-type: none"> <li>◆ Pam and Robin will work on analysis on takeback numbers.</li> <li>◆ MoFR to get clarification on numbers and work on formatting with Robin. Will also clarify the 51 595 in FS reserve. Pam is researching and will get back to the group with the information she can share.</li> <li>◆ Suggest Jim Simpson be invited to attend next meeting to speak to woodlot issues.</li> </ul> <p><b>Key Message:</b> If the group wants to support a solution that is different to the recommendation of district staff, with respect to woodlot location, or other boundary proposals, then the group needs to prepare their complete business case.</p> <p>Looking for assurances that after all the work that the District Manager doesn't still go with the district staff plan. It will take a well prepared argument to swing it. May mean extensive field reviews need to be conducted. Perhaps more of a GIS analysis. <b>Action: Pam will discuss with Rory and will get the response back to the group prior to the next meeting.</b></p>	<b>CARRIED FWD</b> Pam/Robin
5.0	<b>ADJOURNMENT</b>	3:30 p.m.	
6.0	<b>NEXT MEETING</b>	<p><b>May 29, 2007 (Tuesday), at 1:00 p.m.,</b> Ministry of Forests and Range <i>large conference room</i>,            370 South Dogwood Street, Campbell River, British Columbia, V9W 6Y7            Phone (250) 286-9300; Fax (250) 286-9490;            Email: <a href="mailto:Forests.CampbellRiverDistrictOffice@gov.bc.ca">Forests.CampbellRiverDistrictOffice@gov.bc.ca</a></p>	

RE-CHART COMMITTEE MEETING MINUTES AND SUPPORTING DOCUMENTS ARE POSTED ON THE MINISTRY OF FORESTS AND RANGE  
 WEB PAGE AT: [HTTP://WWW.FOR.GOV.BC.CA/DCR/RE-CHART/MINUTES.HTML](http://www.for.gov.bc.ca/dcr/re-chart/minutes.html)

# GETTING DATA FROM GOVERNMENT FOR FORESTRY PURPOSES JEN'S QUICK TIPS

## DISCLAIMER:

The information provided in this info sheet are the thoughts and opinions of Jennifer Naylor, Geomatics Analyst Campbell River Forest District. This information is being provided to assist clients of Campbell River Forest District gain access to the most accurate data or information needed for forest operations. There are many places to find out about access to data. Additionally new or updated information does come available from time to time; therefore this information sheet should only be considered additional guidance to existing and published information.

## TIP 1 – MAKE CONTACT

Always contact someone in the forest district for which you need data. Specifically you want to speak to someone who has indepth knowledge about datasets for that district. This may or may not be a Geomatics person.

## TIP2 – BE SPECIFIC

If you think you know what datasets you want, be specific and ask for data you need, but also ask is there are other related datasets that you should be aware of. Hopefully the district contact can tell you where to get access to the data or provide the data for you.

## TIP3 – PROVIDE CONTEXT

When asking for data, indicate what purpose you want to use the data. When you make specific data requests without any context or questions, we assume you know what you are getting and what the appropriate use of the data is.

There may be better data available than what you asked for, or there may be data issues you should be aware of. There is co-accountability here. The more context we have, the better able we are at providing you the information you need.

## TIP4 - DO YOUR HOMEWORK

This is not an exclusive list, but hopefully covers off the vast majority  
I realize that information overload is probably one of the biggest problems so I'll try and provide a brief description of the sites listed

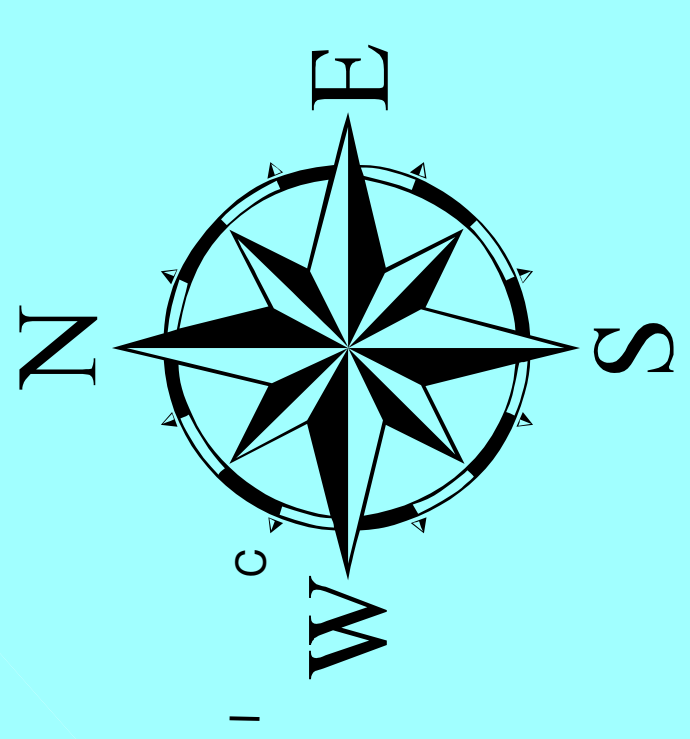
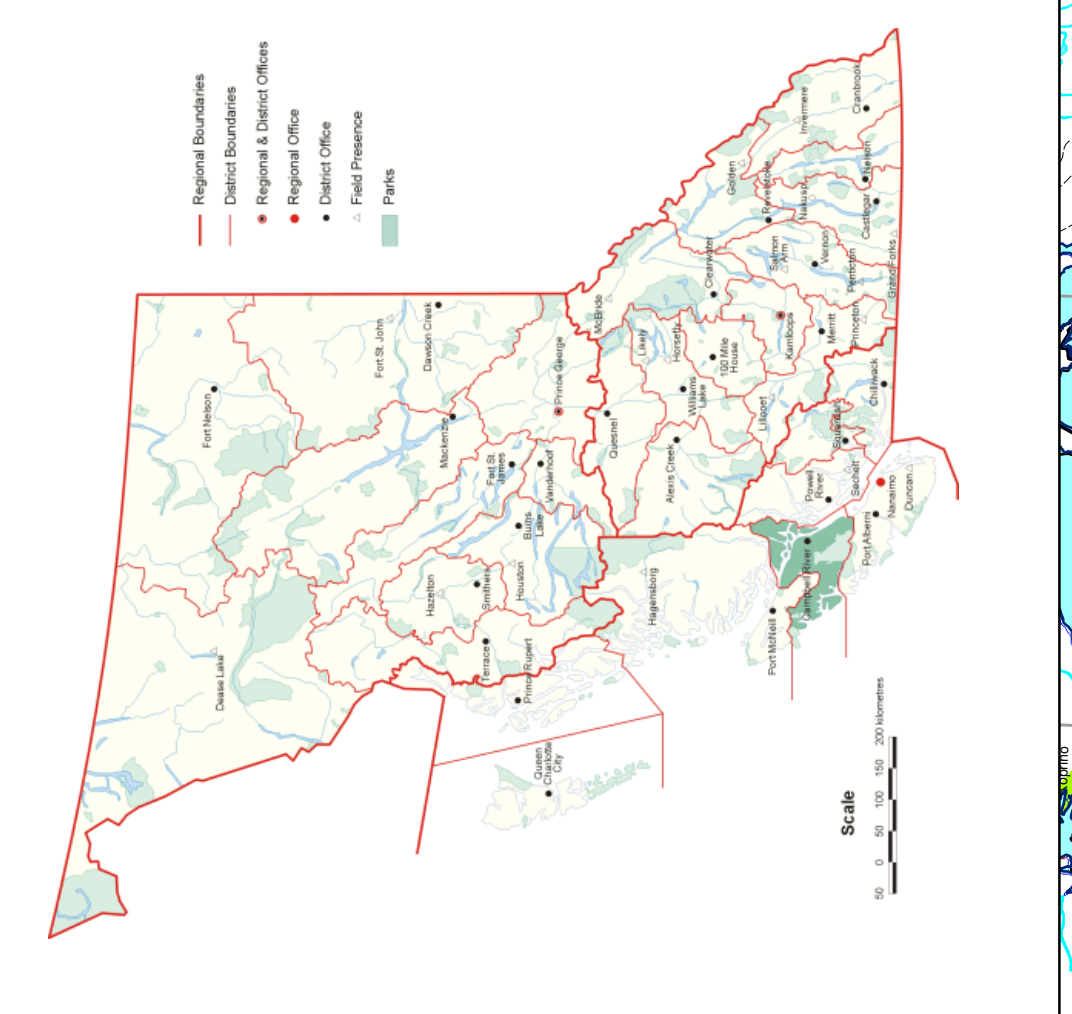
LINK	PURPOSE	COMMENTS	PROVIDER
<a href="http://www.for.gov.bc.ca/dcr/Stewardship.htm">http://www.for.gov.bc.ca/dcr/Stewardship.htm</a>  ***I will not be adding the links found on the stewardship matrix to this list. There are lots of links here, it is a great place to start!	Access to legally established data that falls inside Campbell River Forest District	We try to update this site so that the most up-to-date data from all ministries is available.  Only includes legally established data  Errors or omissions contact Pam Silver or Jennifer Naylor	Campbell River Forest District
<a href="ftp://ftp.for.gov.bc.ca/DCR/external!/publish/CRFD_no_legal_direction/">ftp://ftp.for.gov.bc.ca/DCR/external!/publish/CRFD_no_legal_direction/</a>	Access to various datasets for Campbell River Forest district that	Some data in these folders is password protected.	Campbell River Forest District

	may not have legal objectives but may be useful for Forest operations or planning	Before using any of this data contact Jennifer Naylor because more update information may be available elsewhere	
<a href="http://ilmbwww.gov.bc.ca/bmgs/">http://ilmbwww.gov.bc.ca/bmgs/</a>	The home planet of data for the province of British Columbia	This site provides links to all sorts of stuff including TRIM, geographical names , mapdata ongoing projects etc	Integrated Land Management Bureau (ILMB)
<a href="http://ilmbwww.gov.bc.ca/bmgs/about/geolinks.htm">http://ilmbwww.gov.bc.ca/bmgs/about/geolinks.htm</a>	Geographical Links	Although a link from the previous link, I thought this link important enough to stand on it's own due to the number of links to geographical data links	ILMB
<a href="http://ilmbwww.gov.bc.ca/bmgs/products/ecommerce_intro.htm">http://ilmbwww.gov.bc.ca/bmgs/products/ecommerce_intro.htm</a>	BASE MAP ONLINE STORE	The place to go to purchase data from the province. Includes, TRIM, imagery, including FREE data such as rasterbased TRIM.	ILMB
<a href="http://ilmbwww.gov.bc.ca/bmgs/pba/sop/">http://ilmbwww.gov.bc.ca/bmgs/pba/sop/</a>	Standard Operating Procedures to get access to BASEMAPPING and RESOURCE INVENTORIES as a government agency or partner	The only way to acquire TRIM for FREE	ILMB
<a href="http://www.lrdw.ca/">http://www.lrdw.ca/</a>  ** always check with the district to ensure data posted on the LRDW is the most up-to-date. Also to check its accuracy and reliability.  ** There are lots of really useful links on this site. Most importantly <a href="#">Discovery Service</a> and <a href="#">Download service</a> .	Land and Resource Data Warehouse (LRDW)	The official repository for integrated land resource and geographic data.  Depending on permissions, you will be able to see and download different data. A BCEID account identified as a forest industry partner gets access to more data than public	ILMB
<a href="http://maps.gov.bc.ca/">http://maps.gov.bc.ca/</a>  There are lot of great links here, and you can access a huge variety of provincial datasets. Two that I would recommend first include: <a href="#">Forest Mapview</a> and <a href="#">ImapBC</a>	Public Internet Mapping Sites		

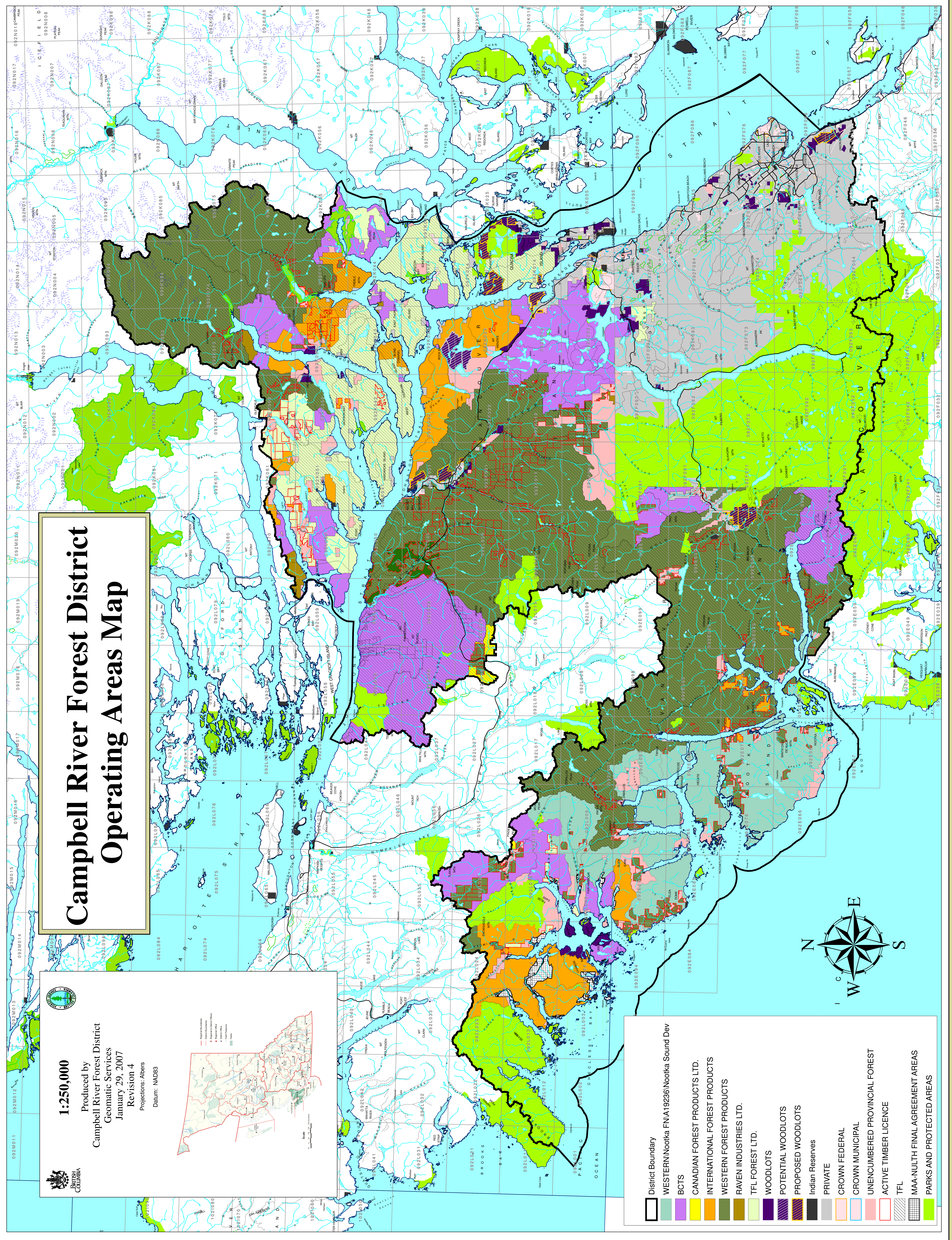
TIP5 – PROVIDE FEEDBACK

# Campbell River Forest District Operating Areas Map

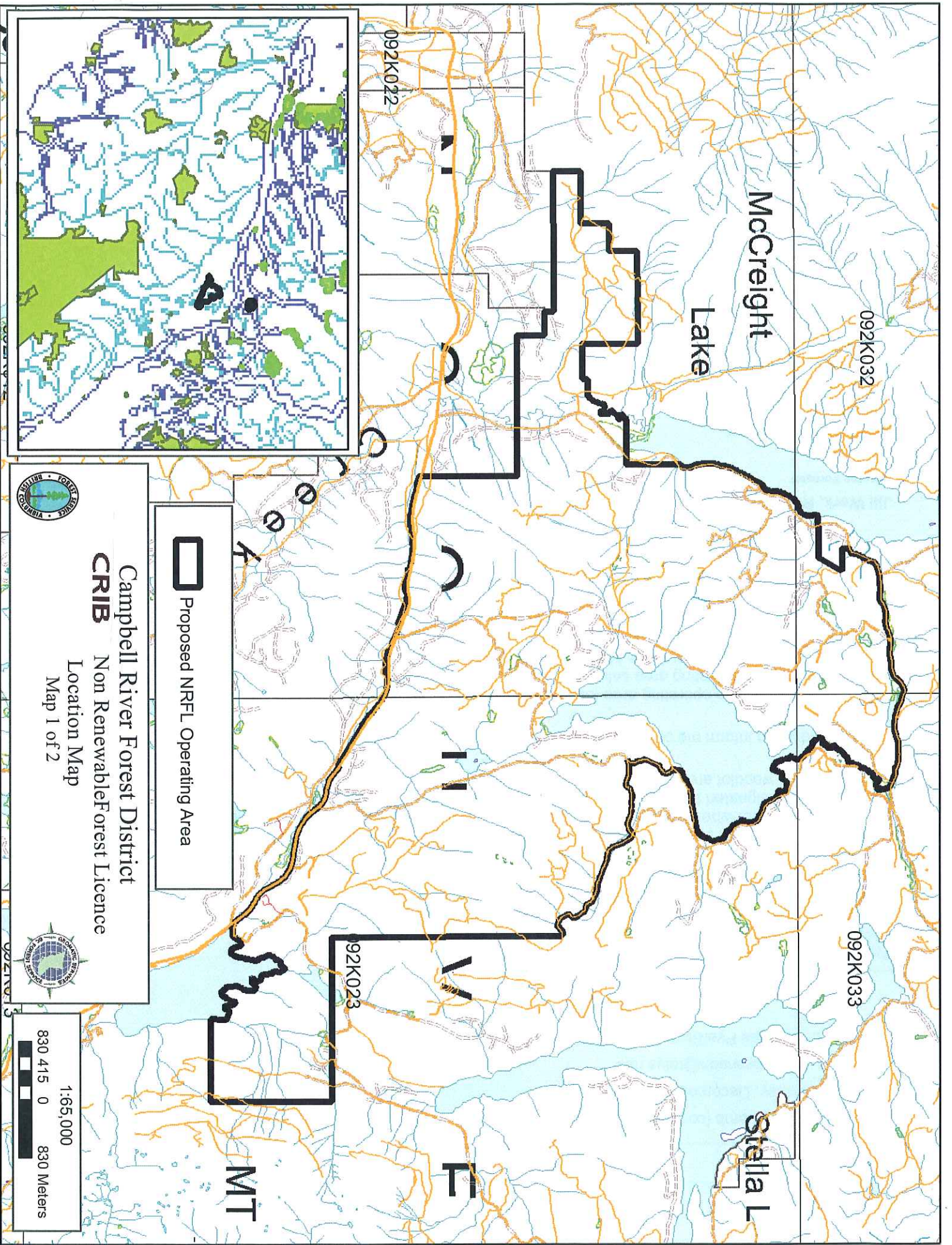
**1:250,000**  
 Produced by  
 Campbell River Forest District  
 Geomatic Services  
 January 29, 2007  
 Revision 4  
 Projections: Albers  
 Datum: NAD83



- District Boundary
- WESTERN/Nootka FNA192361/Nootka Sound Dev
- BCTS
- CANADIAN FOREST PRODUCTS LTD.
- INTERNATIONAL FOREST PRODUCTS
- WESTERN FOREST PRODUCTS
- RAVEN INDUSTRIES LTD.
- TFL FOREST LTD.
- WOODLOTS
- POTENTIAL WOODLOTS
- PROPOSED WOODLOTS
- Indian Reserves
- PRIVATE
- CROWN FEDERAL
- CROWN MUNICIPAL
- UNENCUMBERED PROVINCIAL FOREST
- ACTIVE TIMBER LICENCE
- TFL
- MAA-NULTH FINAL AGREEMENT AREAS
- PARKS AND PROTECTED AREAS







McCraith  
Lake

092K032

092K033

Stella L

092K022

92K023

MT

 Proposed NRFL Operating Area

Campbell River Forest District  
**CRIB** Non Renewable Forest Licence

Location Map  
Map 1 of 2



1:65,000  
830 415 0 830 Meters