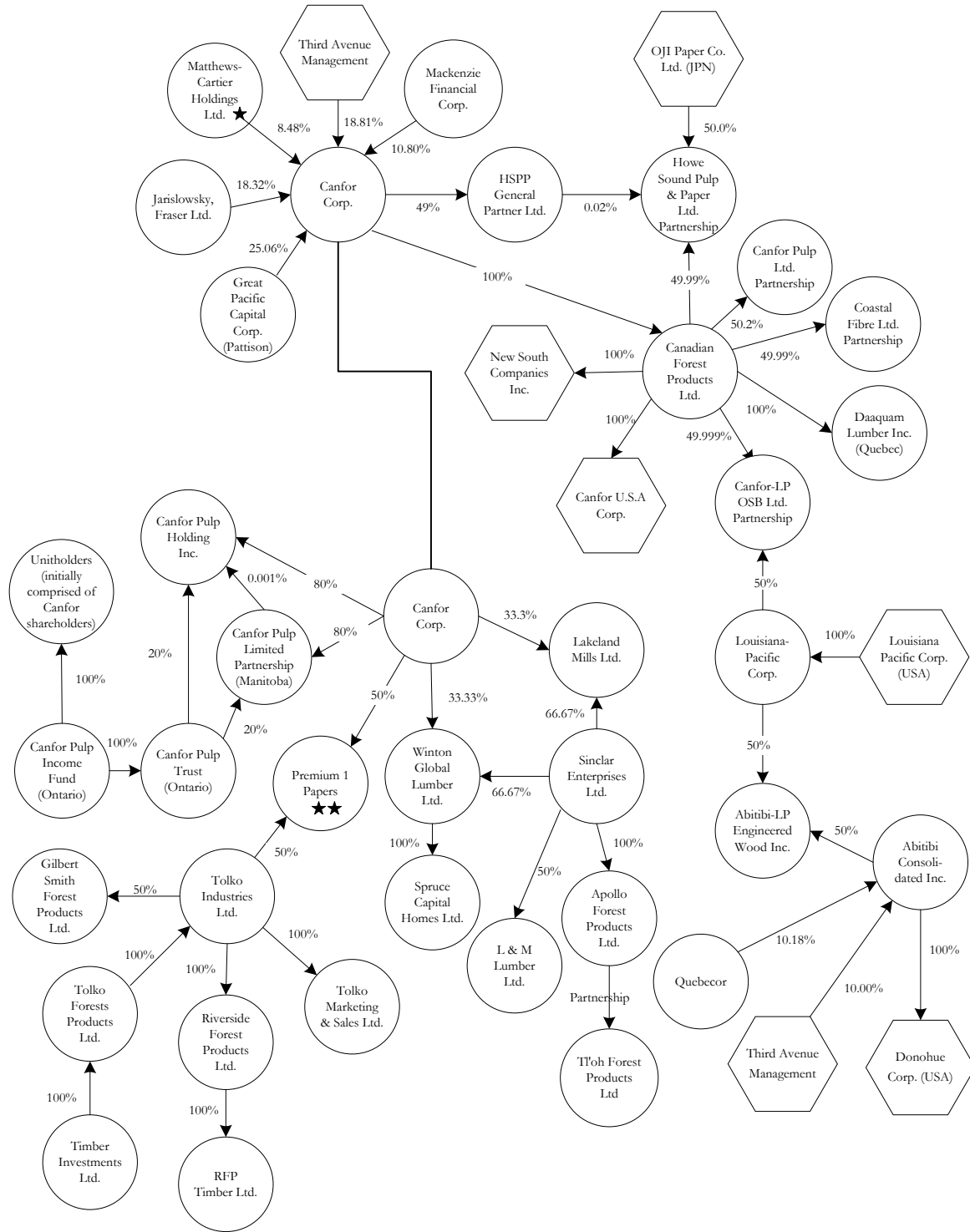


Ownership and Inter-Corporate Linkages of Selected Forest Companies in British Columbia



★ A holding company controlled by the company's founding Bentley and Prentice families.

★ ★ Jointly owned on sales and marketing partnership: The Premium 1 Papers markets bleached and unbleached Kraft paper products from Canfor's Prince George, BC mill and Tolko's Kraft Papers mill in The Pas, MB.

- Indicates corporate or administrative operations outside of Canada
- Indicates corporate or administrative operation within Canada

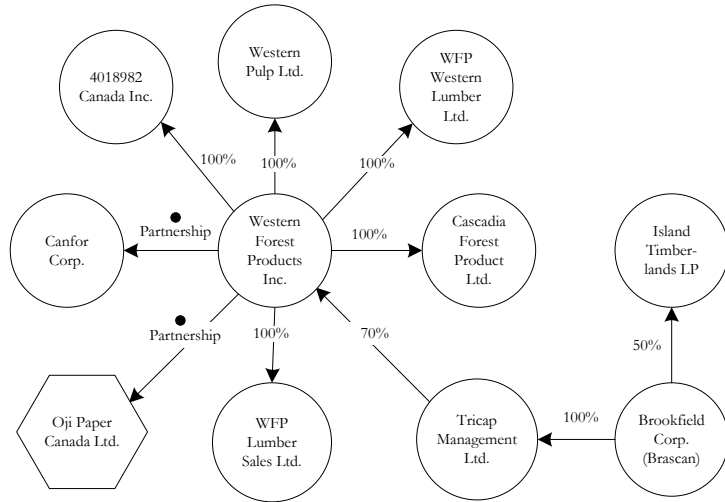
The presented linkages are based on the information that was publicly available in March 2007.

Sources: Corporate annual information forms, annual and quarterly reports, and other public issues accessed through company websites and www.sedar.com

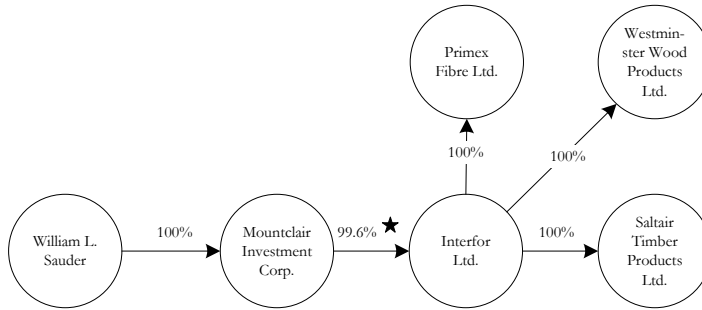
The information presented here has been gathered from public sources and is, to the best of our knowledge, accurate. This information is presented solely as an outline of the general structure of the BC forest products industry and should only be used as such.

Errors or omissions should be communicated to:
 Economics and Trade Branch, Ministry of Forests
 P.O.Box 9514, Stn. ProvGov
 Victoria, B.C., V8W 9C2
 Forest.EconomicsAndTradeBranchOffice@gov.bc.ca

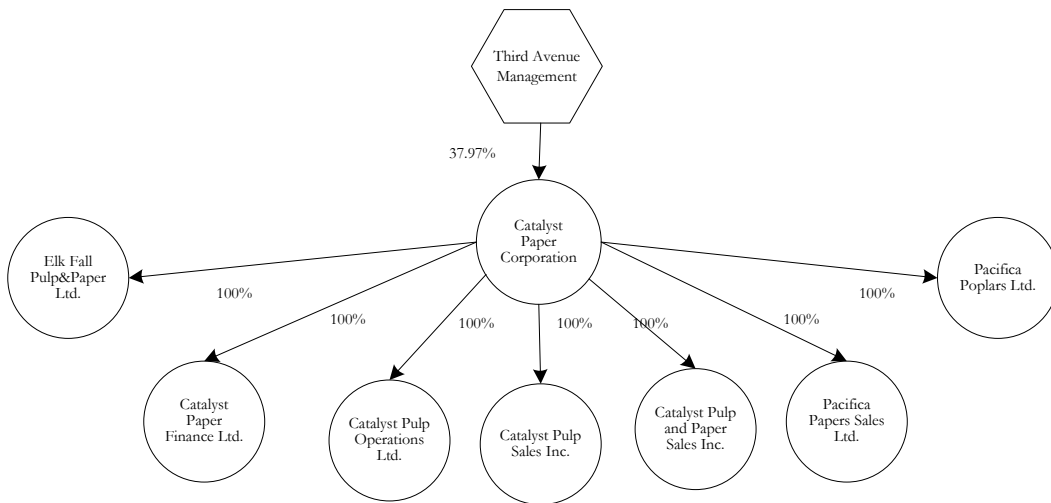
Ownership and Inter-Corporate Linkages of Selected Forest Companies in British Columbia



● On March 17, 2006, WFP executed a 40 year fibre supply agreement with the Partnership.



★ Additionally to the 99.6 % of Class B common shares Mountclair Investment Corp. has also 2.4 % of Class A subordinate voting shares. CCM Master Qualified Fund Ltd. (managed by Coghill Capital Management L.L.C) holds 12.48% of Class A subordinate voting shares and Howson Tattersall Investment Counsel Ltd. Holds 10.59 % of Class A subordinate voting shares.



- Indicates corporate or administrative operations outside of Canada
- Indicates corporate or administrative operation within Canada

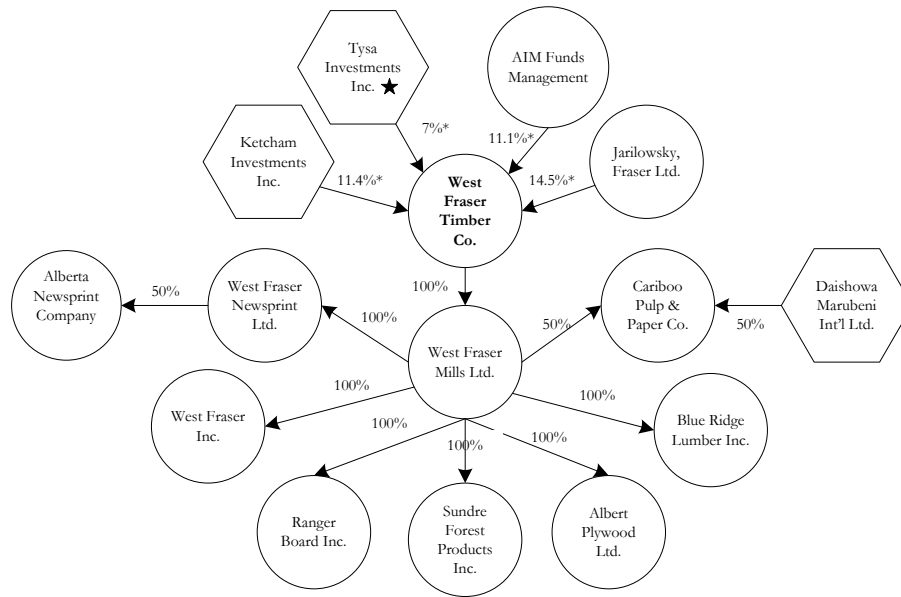
The presented linkages are based on the information that was publicly available in March 2007.

Sources: Corporate annual information forms, annual and quarterly reports, and other public issues accessed through company websites and www.secdar.com

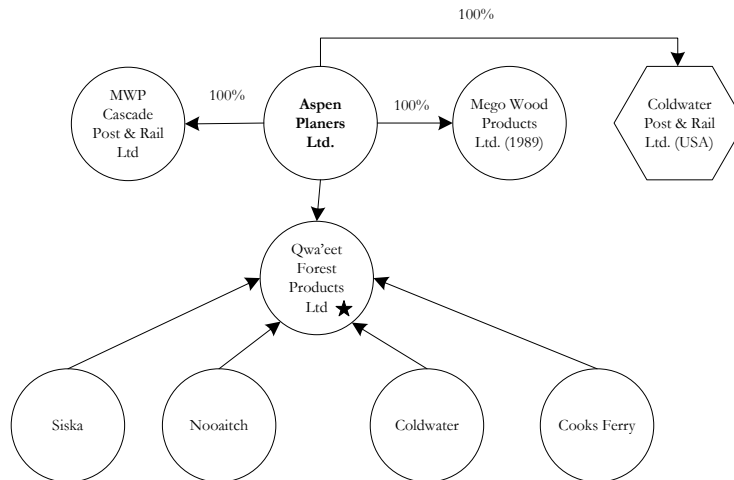
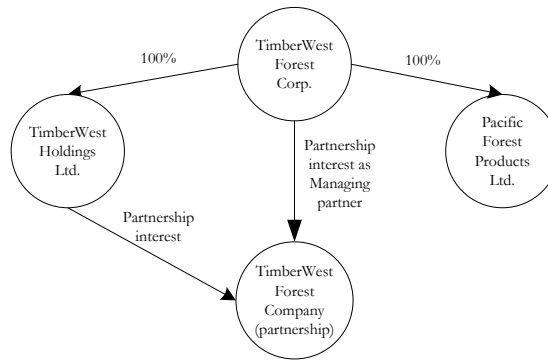
The information presented here has been gathered from public sources and is, to the best of our knowledge, accurate. This information is presented solely as an outline of the general structure of the BC forest products industry and should only be used as such.

Errors or omissions should be communicated to:
 Economics and Trade Branch, Ministry of Forests
 P.O.Box 9514, Stn. ProvGov
 Victoria, B.C., V8W 9C2
 Forest.EconomicsAndTradeBranchOffice@gov.bc.ca

Ownership and Inter-Corporate Linkages of Selected Forest Companies in British Columbia



★ Controlled by William P. Ketcham * % of total votes



★ Aspen is also a joint venture partner with First Nation Bands: Cooks Ferry; Coldwater; Nooaitch; and Siska. This consortium holds a replaceable Forest License under the company Qwa'et Forest Products Ltd.

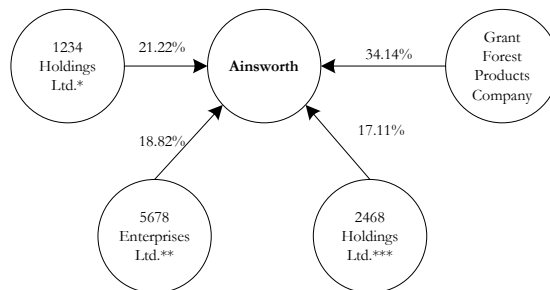
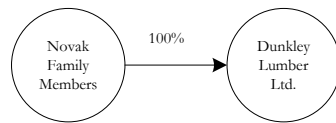
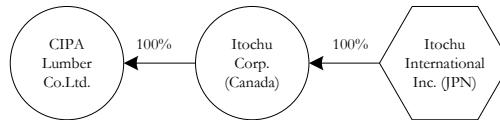
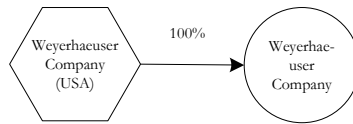
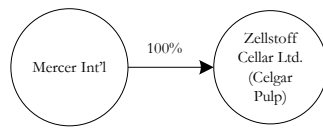
- Indicates corporate or administrative operations outside of Canada
- Indicates corporate or administrative operation within Canada

The presented linkages are based on the information that was publicly available in March 2007.
Sources: Corporate annual information forms, annual and quarterly reports, and other public issues accessed through company websites and www.scdar.com

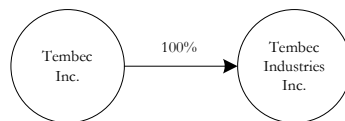
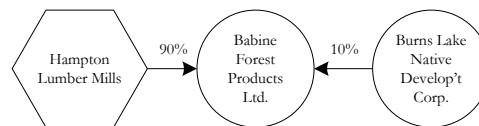
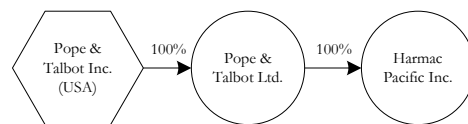
The information presented here has been gathered from public sources and is, to the best of our knowledge, accurate. This information is presented solely as an outline of the general structure of the BC forest products industry and should only be used as such.

Errors or omissions should be communicated to:
Economics and Trade Branch, Ministry of Forests
P.O.Box 9514, Stn. ProvGov
Victoria, B.C., V8W 9C2
Forest.EconomicsAndTradeBranchOffice@gov.bc.ca

Ownership and Inter-Corporate Linkages of Selected Forest Companies in British Columbia



* 96 % owned by David Ainsworth and 4 % by Catherine Ainsworth. ** 98 % owned by D. Allen Ainsworth. *** 95 % owned by Brian E. Ainsworth.



- Indicates corporate or administrative operations outside of Canada
- Indicates corporate or administrative operation within Canada

The presented linkages are based on the information that was publicly available in March 2007.

Sources: Corporate annual information forms, annual and quarterly reports, and other public issues accessed through company websites and www.sedar.com

The information presented here has been gathered from public sources and is, to the best of our knowledge, accurate. This information is presented solely as an outline of the general structure of the BC forest products industry and should only be used as such.

Errors or omissions should be communicated to:
 Economics and Trade Branch, Ministry of Forests
 P.O.Box 9514, Stn. ProvGov
 Victoria, B.C., V8W 9C2
Forest.EconomicsAndTradeBranchOffice@gov.bc.ca