

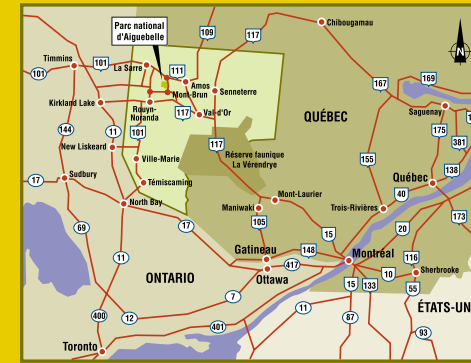
Park Journal



PARC NATIONAL d'Aigüebelle

ENGLISH VERSION

2007-2008 Edition



In winter, the park is accessible only by Mont-Brun.

It's worth the drive!

INFORMATION

Call: 819 637-7322 Address: 1702, rang Hudon
 Fax: 819 637-7106 Mont-Brun (Québec)
 E-mail: parc.aigüebelle@sepaq.com JOZ 2Y0
 Website: www.parcquebec.com

Reservation

Call: 1 800 665-6527 ou 819 637-7322

BUSINESS HOURS OF THE SERVICE CENTRES AND SKI CHALET

MONT-BRUN SERVICE CENTRE (via Hwy. 101 et Hwy. 117)
Summer: From May 18 thru June 25, 2007 Monday thru Thursday 9:00 a.m. to 7:00 p.m.
 Saturday and Sunday 9:00 a.m. to 8:00 p.m.
 From June 26 thru Sept. 3, 2007 7 days / week 9:00 a.m. to 8:00 p.m.
***Falls:** From Sept. 4 thru Dec. 20, 2007 Monday thru Friday 9:00 a.m. till noon
 1:00 p.m. to 4:30 p.m.
 From Sept. 4 thru Oct. 8, 2007 Saturday and Sunday 9:00 a.m. to 6:00 p.m.
***Winter:** January 5 thru March 30 2008 Monday thru Friday 9:00 a.m. till noon
 Saturday and Sunday 1:00 p.m. to 4:30 p.m.
 10:00 a.m. to 3:30 p.m.

TASCHEREAU SERVICE CENTRE
 Summer: From May 18 thru Sept. 3, 2007 7 days / week 9:00 a.m. to 8:00 p.m.

SKI CHALET (information kiosk)
 From January 5 thru March 30, 2008 Friday thru Sunday 9:30 a.m. to 5:30 p.m.

CHRISTMAS PERIOD (December 21, 2007 thru January 2, 2008)
Mont-Brun Service Centre
 December 21, 22, 23, 24, 26 and 31, 2007 12:00 a.m. to 3:00 p.m.
 December 27 thru 30, 2007 and January 2, 3, 4, 2008 10:00 a.m. to 3:00 p.m.
 December 25, 2007 and January 1, 2008 Closed

Ski Chalet
 From December 27 thru 30, 2007 and January 3 et 4, 2008 10:00 a.m. to 3:00 p.m.

**In November, December and January, the Mont-Brun Service Centre is closed on Mondays.*

BUY NATURE

Did you know that Parcs Québec "Boutique Nature" stores offer a wide range of souvenirs, clothing, and nature discovery products?

And now, to gradually eliminate the use of plastic bags in its network, Parcs Québec is offering reusable bags – a tangible way of helping preserve our precious environment!

100%

recyclable
 reusable
 made in Québec
 ecological
 environmentally friendly



Visit our virtual boutique at ParcsQuebec.com

ALL PROFITS ARE REINVESTED IN THE PARKS TO ENSURE THEIR PRESERVATION.

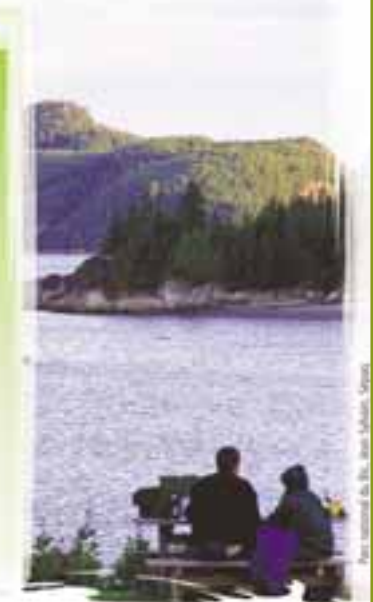
AVENTURE ÉCOTOURISME QUÉBEC

The outfitters, members of Aventure Écotourisme Québec, in collaboration with Sépaq, offer you several stays and guided activities especially conceived for having you discover exceptional natural spaces.

AEQ groups together more than one hundred producers in adventure tourism and in ecotourism that join forces for offering you high-quality products.

Consult the Association's website for planning your guided activities in Sépaq's national parks, wildlife reserves and tourist centres

For more information on the Association and his members:
www.aventure-ecotourisme.qc.ca



This document was printed on 100% recycled paper made in Québec, containing 100% post-consumption fibres and produced without using elementary chlorine. The inks used for this production contain vegetable oils.

THE GRAND TOUR OF QUÉBEC'S NATIONAL PARKS



Environmental protection is at the heart of the concerns of our society. Not a day goes by without this topic being discussed in the media and public forums. In addition to adhering to the strict conservation mission of national parks, Sépaq has chosen to adopt an ecological approach in the day-to-day management of territories.

Most of the good practices implemented aim to reduce energy consumption, drinking water consumption, and greenhouse gases emissions associated with the improvement of and access to national parks.

Among the many actions taken to improve our management-related environmental scorecard, mention may be made notably of the residual material management program, the use of 100% post-consumption recycled paper, the reduction of our fleet of vehicles, greater reliance on public transit services, the use of solar energy, better

water management by controlling shower utilization times, the use of biodegradable household products, and the reduction of grass-covered surfaces.

We would like to thank all Quebecers and visitors from outside Québec who have chosen to frequent national parks over the last seven years.

Your comments have enabled us to improve our approaches as well as the range of activities and services that we offer. Your many visits, close to 3.6 million visit-days in 2006, have encouraged us to offer you, on a daily basis, a high-quality "Park Experience" tailored to your needs. Continue to inspire us... For our part, we promise to keep up our work: promoting the discovery of and access to Québec's most beautiful protected natural heritage while ensuring an acceptable minimum impact.

National parks are here for you to enjoy!

Discover our regional parks



Raymond Desjardins
Vice-president of Operations
Parcs Québec

Yvan Bilodeau
President and CEO
Sépaq

At Parc national d'Aigüebelle, client satisfaction is everybody's business!



France Simard, director

Aigüebelle has made remarkable progress since the transfer of parks to Sépaq in 1999. It must be said that Sépaq, our administrative body, is one of the most dynamic organizations around. Investments, be they for infrastructure improvements and development or for marketing, are not unrelated to the increase in visitors, from about 21,000 visitors to close to 35,000.

Another point worth emphasizing: client satisfaction. Studies show that Aigüebelle gets results that make it Number 1 when it comes to the skill and courtesy of our staff and customer service in general, as well as for the quality of our lodging and facilities. Also, I would feel amiss in not mentioning the excellent work of my entire team because, at Parc national d'Aigüebelle, client satisfaction is everybody's business. It has been part of the organizational culture for a very long time.

It is with an immense pleasure and with a lot of pride that the entire team joins me in welcoming you to Parc national d'Aigüebelle.

I invite you to take part in all of the discovery activities offered to you by our team of park wardens. Consult our improved and expanded calendar. Activities have been reviewed with a much more interactive approach to provide even more pleasure. Participate! After all, visiting a park means discovering well-kept secrets about a protected territory, a parcel of our natural heritage and our inheritance for future generations.

That being said, what we want to accomplish in the next 5 years is in keeping with what has been achieved until now. We are convinced of the potential for our territory, and tourist and social trends have confirmed this for us. All our team, as well as our regional partners, count on the support of our network. Indeed, when Abitibi-Témiscamingue, which is a tourist region to be developed, endeavors to attract out-of-region clients, the involvement of Parc national d'Aigüebelle and the strength of Sépaq are essential.

Simard

France Simard,
director of Parc national d'Aigüebelle

The mission of Parcs Québec

With a view to achieving harmonious development at the cultural, social, economic and regional levels, Parcs Québec is responsible for the conservation and development of territories that are representative of Québec's 43 natural regions or exceptional sites, while ensuring that they are accessible for educational and outdoor use.

All of Québec's national parks were created in accordance with World Conservation Union standards. The criteria are defined as follows:

- ▶ A relatively vast area that represents one or more ecosystems that are moderately or not at all transformed by exploitation;
- ▶ Where animal and plant species, geomorphological sites and habitats are of particular interest from a scientific, educational or recreational viewpoint, and that offers scenery of great beauty;
- ▶ In which the highest competent authority of the country has taken measures to eliminate exploitation and to instil respect for the ecological, geomorphological or aesthetic aspects, on the whole;
- ▶ Where a visit is authorized, under certain conditions, for educational, cultural or recreational purposes.

Contents

Word of welcome	2
From the director	3
The mission of Parcs Québec	3
Intriguing history	4
Two new-breeding species	5
Calendar of events	6
Discovery activities	8
Aigüebelle Live	9
Park map	10
Discover the park	11
Nature relaxation Package	11
Fees	12
Lodging near the park	13
The hotels are inviting you	14
Rouyn-Noranda, city of sensation	15
The wonder of winter	16
General rules and regulations	18
Hydro-Québec	19
Localization map	20
Schedule	20

Crédits

Linguistic review: Patrick Poitras
Translation: Traduction Fidelis (Cyndie Chaîné et Wayne Clark)

Graphic designer: Ruth Pelletier, graphiste
Photographies: Mathieu Dupuis

Intriguing history

There's nothing boring about the history of the creation of Aiguebelle region. Imagine: the landscape started to take form billions of years ago. Then, ten thousand years ago, the last glaciations put their final touch to the design. Today, overlooking a vast clay plain, the chain of Abijévis hills dominates the park. The hiking trails reveal the phenomena that engraved in the ground the story of geological eras and geomorphologic events.

While exploring the south part of the park, you come into contact with the Precambrian era. If you are observant, you will see circles crudely drawn on the rocky outcrops: these are the volcanic cushions cooled 2.7 billion years ago. Evidence of a submarine volcanism, these cushions have been remarkably well preserved.

The La Haie and Sault lakes attract you? Get ready for a larger than life show. A powerful natural force raised the landscape, creating a geological fracture in the process. Crossing the park from the north to the south, this

fault starts at Loïs Lake and ends at La Haie Lake. The most spectacular part is in the Abijévis hills. Breathtaking escarpments, fault lakes, magnificent panoramas and ingenious amenities will make your hike unforgettable.

Do you want to discover the most representative part of Abitibi?

Dominated by the vast Loïs Lake, this sector is a paradise for nautical activities. The sea kayak is the star here. For a few hours or for an entire stay, paddle your way to the discovery of the lake's many islands, bays and rivers.

Discover what's behind it

Many activities await you. They provide interpretation of the phenomena

The Friends of Aiguebelle

This non-profit organization has, in collaboration with the Parc national d'Aiguebelle, produced a brochure that allows you to discover several geological and geomorphological phenomena of the Park. With a map, photos, drawings and clear explanations, this brochure will guide you to these phenomena and will make them easier to understand.

On sale at the nature boutique for \$3.74 (taxes are not included).



you encounter and of the regional characteristics of fauna and flora. Leave by rabaska, by canoe or by sea kayak; opt for a tale on the beach or for a bird-watching hike; visit the moose habitat or get acquainted with the latest discoveries made about the park while participating in the New Discoveries activity. These activities will enrich your knowledge while unveiling the wealth of our region.



Northern Saw-whet Owl and Boreal Owl: two new breeding species for Parc national d'Aiguebelle



By Louis Imbeau, research professor, NSERC-UQAT-UQAM Industrial Research Chair in Sustainable Forest Management, Université du Québec en Abitibi-Témiscamingue

The Northern Saw-whet Owl *Aegolius acadicus* and its cousin the Boreal Owl *Aegolius funereus* are little-known species and all the more difficult to spot because they are mostly active at night. In Quebec, Abitibi and the Parc national d'Aiguebelle are located roughly at the northern limit of Northern Saw-whet Owl distribution and at the southern limit of Boreal Owl distribution.

To nest, the two species use natural cavities in dead trees or old woodpecker cavities (mainly those of the Pileated Woodpecker and the Northern Flicker). In boreal forest, cavities big enough to shelter a family of owls are rare and this probably limits the population size of these owl species. To learn a little more about them, studies have been undertaken recently at the Université du Québec en Abitibi-Témiscamingue to determine their preferred habitats and evaluate their sensitivity to loss and fragmentation of mature forests.

Nocturnal inventories done along highways revealed that the Northern Saw-whet Owl is well established in Abitibi and especially in Parc national d'Aiguebelle, where no fewer than eight different individuals were counted in 2005 at ten inventory stations. A network of 300 artificial nesting sites has been established in the region in order to undertake a long-term follow-up of owl populations and to determine to what extent local habitat conditions influence the selection of the nesting sites and the productivity of the couples that use them. In this network, twenty nesting sites were established in Parc



national d'Aiguebelle in the fall 2005. These sites are important for our survey because they are mostly unaltered by human activities (forest harvesting or agriculture) and they constitute good «control» sites.

The first year of nesting-site follow-up was fruitful for Aiguebelle: the two species were added to the list of the park's breeding species. A pair of Northern Saw-whet Owls produced four young in the park; a pair of Boreal Owls produced three. All these individuals, as well as the adults, have been ringed, which will make it possible to determine whether the same individuals use the park's nesting sites again in coming years.

To learn more about this survey, take part in the *New Discoveries* activity.

OUR GREEN APPROACH TO THE DAILY MANAGEMENT OF NATIONAL PARKS

Sépaq thinks and acts green in managing the national parks under its care. It knows how important national parks are to the success of sustainable development and lets this guide every environmental decision it makes. Concrete measures include:

- An ecological integrity program to monitor the state of health of parks
- More and more buildings powered by solar energy
- Public transportation in the Hautes-Gorges-de-la-Rivière-Malbaie, Gaspésie, Jacques-Cartier and Oka national parks
- Electric vehicles in the Oka and Îles-de-Boucherville national parks
- Downsizing and rationalization of the vehicle fleet
- Reduction in drinking water consumption in campgrounds thanks to water meters in showers
- A waste management program
- Progressive discontinuation of the use of plastic bags for consumers
- Promotion tools printed on 100% postconsumer paper
- Biodegradable household products
- Natural or neon lighting

These actions are proof of our commitment to help improve the use of resources and preserve the land for the benefit of current and future generations.

THE GREAT OUTDOORS AND CONSERVATION - THE 7 PRINCIPLES OF LEAVE NO TRACE CANADA

Because its role encompasses more than conservation alone, Parcs Québec wants to use every possible occasion to foster support among visitors to its national parks for the adoption of ecologically responsible practices in outdoor activities. This is the reason Parcs Québec is proud to have chosen to promote the principles of *Sans trace*, the french version of the popular American *Leave No Trace* program. This code of outdoor ethics is based on the following seven principles:

- Plan Ahead and Prepare
- Travel and Camp on Durable Surfaces
- Dispose of Waste Properly
- Leave What You Find
- Minimise Campfire Impacts
- Respect Wildlife
- Be Considerate of Other Visitors



These principles are of course inherent in the regulatory framework that governs our national parks.

At the same time, awareness and application of Leave No Trace values in every single one of our outdoor activities, even the most unnoteworthy among them, can help reduce their impact on our natural environment.

To learn how you can best play your part inside Québec's national parks, you can consult www.parksquebec.com, and click on the *Conservation Mission* tab.

To find out more about *Leave No Trace*, go to www.aventure-ecotourisme.qc.ca, choose English, then click on the *Leave No Trace* tab.

2007 Discovery Activities



From July 7 to August 19, 2007

When	Monday	Tuesday	Wednesday	Thursday	Friday	Saturday	Sunday
Morning	Park birds 10:30 a.m. to 11:45 a.m. Abijévis campground			*Rabaska through a fault 10:30 a.m. to 11:45 a.m. La Haie Lake parking \$4.39/adult \$2.19/6 to 17 years	On the track End July 28 10:30 a.m. to 11:45 a.m. Abijévis campground		
Afternoon	Break in the hills Between 1:30 p.m. and 3 p.m. Posted activity of 15 min. La Traverse Trail	Break in the hills Between 1:30 p.m. and 3 p.m. Posted activity of 15 min. La Traverse Trail	Break in the hills Between 1:30 p.m. and 3 p.m. Posted activity of 15 min. La Traverse Trail	Break in the hills Between 1:30 p.m. and 3 p.m. Posted activity of 15 min. La Traverse Trail	Break in the hills Between 1:30 p.m. and 3 p.m. Posted activity of 15 min. La Traverse Trail	Break in the hills <i>(except Aug. 4)</i> Between 1:30 p.m. and 3 p.m. Posted activity of 15 min. La Traverse Trail	Break in the hills Between 1:30 p.m. and 3 p.m. Posted activity of 15 min. La Traverse Trail
	*Rabaska through a fault 3:30 p.m. to 4:45 p.m. La Haie Lake parking \$4.39/adult \$2.19/6 to 17 years	*Rabaska through a fault 3:30 p.m. to 4:45 p.m. La Haie Lake parking \$4.39/adult \$2.19/6 to 17 years	*Rabaska through a fault 3:30 p.m. to 4:45 p.m. La Haie Lake parking \$4.39/adult \$2.19/6 to 17 years	*Rabaska through a fault 3:30 p.m. to 4:45 p.m. La Haie Lake parking \$4.39/adult \$2.19/6 to 17 years	*Rabaska through a fault 3:30 p.m. to 4:45 p.m. La Haie Lake parking \$4.39/adult \$2.19/6 to 17 years	**Sea kayak on the big Lois <i>(except Aug. 4)</i> 1 p.m. to 3 p.m. - guided activity 3 p.m. to 5 p.m. - unguided excursion Lois Lake dock \$21.06/adult \$10.53/12 to 17 years (An additional \$8 will be charged for the use of a one-person kayak.)	*The great Rabaska tour <i>(except Aug. 5)</i> 1:30 p.m. to 5 p.m. La Haie Lake parking \$14.92/adult \$7.46/12 to 17 years
Evening	Ovation for the moose 7 p.m. to 9 p.m. Abijévis campground \$8.78/ Adult \$4.39/6 to 17 years	Twilight canoeing 7:30 p.m. to 8:45 p.m. Abijévis campground beach \$4.39/adult \$2.19/6 to 17 years Free: 5 years and less	New discoveries 7:30 p.m. to 8:30 p.m. Abijévis campground	Who saw the bear? 7:30 p.m. to 8:30 p.m. Abijévis campground	Place au théâtre: Belle d'Aigüebelle 7:30 p.m. to 8:15 p.m. Abijévis campground	The Tale of the Fire Warden <i>(except Aug. 11)</i> 7:30 p.m. to 8:30 p.m. Abijévis campground	Aigüebelle in images 7:30 p.m. to 8:30 p.m. Abijévis campground

From June 23 to July 6 and August 20 to September 2, 2007

When	Wednesday	Thursday	Friday	Saturday	Sunday
Morning					Park birds 10:30 a.m. to 11:45 a.m. Abijévis campground
Afternoon	Break in the hills 1:30 p.m. to 3 p.m. Posted activity of 15 min La Traverse Trail	Break in the hills 1:30 p.m. to 3 p.m. Posted activity of 15 min La Traverse Trail	Break in the hills 1:30 p.m. to 3 p.m. Posted activity of 15 min La Traverse Trail	Break in the hills 1:30 p.m. to 3 p.m. Posted activity of 15 min La Traverse Trail	Break in the hills 1:30 p.m. to 3 p.m. Posted activity of 15 min La Traverse Trail
Evening	Aigüebelle in images 7:30 p.m. to 8:30 p.m. Abijévis campground	Place au théâtre: Belle d'Aigüebelle 7:30 p.m. to 8:15 p.m. Abijévis campground	Place au théâtre: Belle d'Aigüebelle 7:30 p.m. to 8:15 p.m. Abijévis campground	The Tale of the Fire Warden 7:30 p.m. to 8:30 p.m. Abijévis campground	Who saw the bear? 7:30 p.m. to 8:30 p.m. Abijévis campground

The Aigüebelle Crowned by Billions of Years exhibition as well as Le Petit Musée Faunique, open daily, June 23 to Sept. 3, from 11 a.m. to 5:30 p.m. - Free.

AUTUMN PROGRAMMING

Dates	Activities
Saturday and Sunday, from Sept. 8 to Oct. 7	Break in the hills 12:30 p.m. to 2 p.m. Posted activity of 15 min La Traverse Trail
Labour Day : Sept. 3	
Thanksgiving Day : Oct. 8	*Rabaska through a fault 2:30 p.m. to 3:45 p.m. La Haie Lake parking \$4.39/adult \$2.19/6 to 17 years

Special Activities	Dates	Hours	Rendez-vous	Fee
Spotlight on the Stars	August 11	7:30 p.m. to 11 p.m.	Abijévis campground communal room	\$1.76 for all
Aigüebelle Live! An appointment with music, visual arts and regional flavours. A not-to-be-missed experience for all the senses.	August 4 and 5	To be determined. Look for our program announcement.		

*Reservation mandatory at reception. • **Reservation mandatory at least 24 hours before the event.
Park management reserves the right to cancel activities at any time. Prices may change without notice. Rates don't include the taxes.
Information and reservation: 819 637-7322



Société du Loisir Ornithologique de l'Abitibi
C.P. 91, Rouyn-Noranda (Québec) - J9X 5G1

Bird watching is a passion to be shared.

To learn more about our activities or to become a member, visit our website at www.sloa.ca

All the activities are mainly offered in french.

2007 Discovery Activities

Twilight canoeing (*length: 1 h 15 min*)
Family outing on Matissard Lake (Abijévis campground). It is the ideal time to discover a specially rich environment and, who knows, maybe to see a beaver at work or observe the Great Blue Heron.

Sea kayaking on big Loïs Lake (*length: 2 h*)
After a short initiation to the sea kayak (double kayak), you will paddle your way toward discovery of the vast Loïs Lake. You will be able to gain a good understanding of the lake's history, as well as its aquatic, terrestrial and avian fauna.

Rabaska in a spectacular fault (*length: 1 h 15 min*)
Let the current take you on a discovery of the impressive history of La Haie Lake while admiring a show of natural beauty dating back no less than 2.7 billion years. The activity includes about 35 minutes of rabaska. Plan for 20 minutes of hiking to reach the canoe station.

Aiguebelle crowned by its billions of years (*length: 15 min*)
Visit the Discovery Centre exhibit and explore Le petit musée faunique, containing more than 40 species. It's a look at nature on the 48th parallel north.

Aiguebelle in images (*length: 1 h*)
Didn't see everything at Aiguebelle? Discover every aspect of the park in pictures: its history, creation, fauna, flora and more!

Place au théâtre: Belle d'Aiguebelle (*length: 45 min*)
Meet a colourful character who will make you relive, through his encounters, the sometimes tragic and sometimes humorous history of the park, from its creation to the present day.

Park birds (*length: 1 h 15 min*)
Introduction to ornithology for the whole family. On the menu: beaks, feathers and feet flavoured with the songs of the park birds. An observation outing in the form of a rally will take place near the campground.

Spotlight on the Stars (*length: 3 h 30 min*)
Discussion about our place in the universe, the summer constellations, light pollution and the phenomenon of meteorites. The making of a «hydropneumatic» with children 10 years and older. To finish, until 11 p.m., observation of the night sky on the beach, thanks to telescopes from Amateur Astronomers Club of Abitibi-Témiscamingue.

The tale of the fire warden (*length: from 45 min to 1 h*)
Let your imagination give way to the incredible story of a character who lived in the Abijévis hills. Will you be willing to keep the secrets you will be told? If so, meet on the beach...

Who saw the bear? (*length: 1 h*)
In 2003, in collaboration with biologists from the ministry of Natural Resources and Wildlife, the park participated in an important study on the inventory of region's black bears using identification done with the help of genetic markers. This project, Quebec's largest, covers an area of 65,000 km². Come and learn more about this project and the habits of this magnificent mammal.

On the track (*length: 1 h 15 min*)
Are you 4 to 8 years of age? Become a park warden and learn to recognize animal paws and especially how to identify their tracks during a forest rally. Join us in the communal room at the Abijévis campground.



Ovation to the moose (*length: 2 h 30 min*)
The park has a large moose population. Where are they? What do they do? Commented images of this magnificent animal as well as an outing in its habitat will tell you a little more about it.

The great rabaska tour (*length: 3 h 30 min*)
Discover La Haie Lake by foot and rabaska. After paddling between the escarpments (40 min), you will stop at the end of the lake to take a short hike. This discovery activity is comprised of breathtaking escarpments, erratic block and the water divide. For those 12 and older.

Break in the hills (*length: 15 min*)
A park warden is waiting for you on the La Traverse trail. Before a magnificent panorama, admire Aiguebelle's most spectacular features and understand how they came to be.

New discoveries (*length: 1 h*)
The park's different habitats offer a fascinating laboratory for doing research on the natural environment. Some studies on flora and fauna have been completed and some are now in progress. Come share our discoveries.

Play hooky
The park offers discovery activities in the spring and fall for school groups from kindergarten to high school. *Park Treasure* and *Natural History* are complete educational programs that will create an unforgettable nature adventure for students of the 2nd and 3rd level of elementary school.

Aiguebelle Live! ... a show for all the senses

Saturday and Sunday, Aug. 4 and 5, don't miss this original, colorful and tasty cultural event that blends in with the park's exceptional natural beauty.

At a bend in a trail, at the edge of a pond or at a viewpoint overlooking the cliff, visual artists and musicians will be on hand to delight your ears and eyes.

Aiguebelle Live! is also an appointment with the pleasures of the palate because our masters of regional flavours will be there to let you taste to your heart's content.

The last edition offered you a show of flamenco dancing on the beach. What does the 2007 edition have in store for you? Check out our program.



Wildlife Observation Network of Abitibi-Témiscamingue

Parc national d'Aiguebelle invites you to discover the new Wildlife Observation Network of Abitibi-Témiscamingue. In order to increase your chances of meeting species and also to plan your excursions, the Wildlife Observation Network offers you a set of seven leaflets that reveal the lairs of these feathery, furry or scaly VIPs and the best periods to observe them at the following sites:

- ▶ Antoine Marsh
- ▶ Laperrière Marsh
- ▶ ZEC Kipawa
- ▶ Centre éducatif forestier du Lac Joannès
- ▶ Parc national d'Aiguebelle
- ▶ Refuge Pageau

Get your guidebook for \$10.00 (taxes included). On sale at nature boutique and at 1 866 330-2328 or www.afat.qc.ca/faunIQUE

Hiking is full of surprises...

Need to cool off?
Come for a refreshing swim in the waters of Matissard Lake! This *supervised beach* is very much alive! Whether for swimming, paddleboat or even discovery activities, fun is in store for everyone!

Feeling hungry?
A frozen snack, a light lunch or a genuine regional product... Visitor or camper, you'll find what you need at the *Abijévis campground convenience store!*



Abijévis campground convenience store

Matissard lake beach



For information:
819 762-8867 • www.afat.qc.ca

Special invitation!

Summer internships	Dates	Hours	Cost
Initiation to geocaching (GPS)	Saturday July 7	10 a.m. to 4 p.m.	\$5/pers.
The secrets of plant dye	Saturday July 14	1 p.m. to 4 p.m.	\$5/pers.
Edible plants on the menu!	Saturday Aug. 4	1 p.m. to 4 p.m.	\$5/pers.
Survival in the forest	Saturday and Sunday Aug. 25 and 26	Two days and one night	\$25/pers.
Mushrooms	Sunday Sept. 2	1 p.m. to 4 p.m.	\$5/pers.

Reservations necessary 24 hours in advance at the Centre éducatif forestier du Lac Joannès.

Located at the very heart of Vaudray-Joannès Lakes Biodiversity Reserve

Parc national d'Aiguebelle map



Discover the park... by kayak, canoe or on foot



Legend

- | | |
|--------------------------|--------------------|
| ★ Reception | ▲ Campground |
| 🅑 Parking | ▲ Group Campground |
| 🚻 Washrooms | 🚣 Canoe Camping |
| 🚰 Drinking water | 🏖 Beach |
| ♿ Handicapped Accessible | 🚣 Canoe Station |
| ☎ Public Telephone | 🚣 Kayak Station |
| 🏠 Picnic Area | 🚤 Launch |
| 🏠 Chalet | 👁 Lookout |
| 🏠 Rustic Cabin | 👤 Hiking Trail |
| | 🚲 Bicycle Trail |

Rustic cabins and chalets

- | | |
|-----------------|--------------------|
| 🏠 1 Le Patineur | 🏠 8 Le Collembole |
| 🏠 2 La Guêpe | 🏠 9 L'Éphémère |
| 🏠 3 L'Amiral | 🏠 10 Le Longicorne |
| 🏠 4 Le Dytique | 🏠 La Puce d'eau |
| 🏠 5 L'Alucite | 🏠 La Demoiselle |
| 🏠 6 Le Bourdon | 🏠 Le Vice-Roi |
| 🏠 7 La Cigale | |

Distances

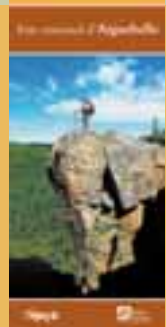
(Km)	Mont-Brun	Taschereau	Camping Abijévis	Lac La Haie	Lac Sault	Camping Du Sablon
Mont-Brun	27,5	7	7	12	10	
Taschereau	26,3	26,1	20,7	18,9		
Camping Abijévis	3,6	13,4	11,6			
Lac La Haie	13,2	11,4				
Lac Sault	1,8					



INFORMATION MAP ADVERTISING
Close to 60 kilometers of trails criss-cross the park, letting you choose a hike that fits your schedule and your interests.

Get our all new Information Map that contains a ton of useful information for planning your hike or your stay.

Price: \$5.27 before taxes



Environment quality partner through maintenance of park sanitary installations. Thank you!

Parc national d'Aiguebelle is composed of rock billions of years old overlooking a clay plain where history is still evolving. It is also landscapes filled with faults, hills, plains, clear or brown waters and chance encounters that invite discovery. Whether your preference is by kayak, canoe or on foot, now's the time to discover Parc national d'Aiguebelle. You'll have the chance to practice one or several of our featured activities and explore unique scenery, landscapes and bodies of water.

The northern sector of the park offers you Lois Lake, a huge body of water that is a paradise for fishing, sea kayaking and canoeing. You'll find an interpretation trail there as well as three hiking trails.

The **Abijévis campground** provides a range of activities such as canoeing, hiking and swimming. Enjoy the beach, Matissard Lake and camping centre services.

The **Abijévis hills** cover nearly two-thirds of the park. Their trails lead you to summits where you will discover the Abitibi clay plain, its lakes and rivers. As well, an interpretation trail will reveal the incredible story of the fire warden.

In the very middle of the park, the **boreal forest** envelopes you in tranquility as you watch wildlife and explore Patrice Lake. In order to preserve the wild aspect of the boreal forest, this sector includes few amenities.

La Haie and Sault lakes will seduce you with the imposing presence of their majestic faults (rocky escarpments). Whether you are exploring by canoe or on foot, let yourself be touched by the splendor of these lakes. Here you will find seven hiking trails, including the **La Traverse trail** and its suspension footbridge, the **Les Paysages trail** and its spiral staircase, as well as the interpretation trail **Les Marmites trail** with its impressive geological and geomorphological phenomena.

Nature relaxation PACKAGE

Let your canoe glide you into the adventure of La Haie Lake's long fault or soak in the serenity of Lake Patrice, where you have a chance to observe wildlife in its natural setting. Parc national d'Aiguebelle offers you the opportunity of exploring a unique area crossed by great glaciers.

Treat yourself to a nature visit full of gentle sensations.

Complete your sensory experience while savouring relaxing moments and fine dining at l'Hôtel Gouverneur Le Noranda.

- ▶ Duration: 2 days/1 night
- ▶ Period: June 24 to Aug. 20, 2007
- ▶ Number of people: 2 adults
- ▶ By reservation only: 819 637-7322 or 819 762-2341

The package includes:

- ▶ 1-day canoe rental at Parc national d'Aiguebelle;
- ▶ 1 Park Information Map.
- ▶ 1 night at l'Hôtel Gouverneur Le Noranda;
- ▶ 1 4-course dinner and 1 breakfast at Le Cellier restaurant;
- ▶ 1 1-hour massage at the Jardin Spa.

Package price

* \$173.50/visit/pers./double occ.

* Taxes and entry fees are not included.

(See advertisement page 17)



An unforgettable stay Pricing summer and fall 2007



Rustic cabins

Rustic cabins	Min. rate	Max. rate
La Guêpe, L'Alucite, Le Bourdon, Le Dytique, Le Patineur, L'Amiral: 2 people	\$48	\$48
La Cigale: 2 to 4 people	\$48	\$96
Le Collembole: 3 to 4 people	\$72	\$96
L'Éphémère: 6 to 16 people	\$144	\$240
Longicorne: 4 to 8 people	\$96	\$192



Rate for additional people: \$24

Fishing with lodging in rustic cabin (including fishing day pass and boat)

High season rate	\$57 per pers. per night
Low season rate (from Monday to Thursday starting Aug. 7)	\$48 per pers. per night

On the day of your arrival, you can check in to your cabin after 5 p.m. On the day of departure, you must check out before 1 p.m.

See also the outdoor equipment rental chart on page 17.

Camping

Campings	Particulars	Rates / night
Ojibway pedestrian camping	For tent only. Source of drinking water nearby. Transportation wagon available. Accessible by foot only.	\$20.18
Canoe or kayak-camping at Lois Lake	Accessible by water only. Distance varies from site to site (between 55 min and 2 h 40).	\$20.80 including fire wood
Group camping • min. 15 pers. • max. 50 pers.	Close to Abijévis campground. Dry toilets. Source of drinking water.	\$5.70/adult \$4.83/17 years and under
Rustic camping du Sablon Lake	For tent only. Dry toilet. No source of water nearby.	\$20.18 including firewood
Abijévis serviced campground	26 sites with drinking water and electricity. 21 sites with source of drinking water nearby.	\$27.64 \$20.18

Additional person: \$4.83/night
Parking co-camper: \$7.46/night
Bundle of wood: \$6.14

For information on camping and park regulations, refer to page 18 of this journal.

An unforgettable stay Pricing summer and fall 2007



Chalets - Capacity

Chalets	Body of water	Fishing with lodging capacity	Vacation capacity
La Demoiselle	Lois Lake	2 to 4 pers.	4 pers.*
La Puce d'eau	Lac Matissard	2 pers.	2 pers.*
Le Vice-Roi	Lac Matissard	N/A	4 to 6 pers.*

*Chalet can accommodate one or several additional people.

Pricing

For the chalet holidays, the rate scale varies depending on the minimum and maximum cottage capacity.

Chalet capacities	Fishing with cottage lodging*	Vacation
2 to 3 people	\$72.00	\$49.00
4 to 5 people	\$71.00	\$43.50
6 to 7 people	\$69.00	\$32.00
No one exceeding the foreseen capacity	N/A	\$32.00
Child 17 and under	\$11.00	\$10.00

*High season rate (from May 18 to Aug. 6, 2007) including fishing day pass and boat.

On the day of your arrival, you can check in to your chalet after 5 p.m. On the day of departure, you must check out before 1 p.m. *Some conditions apply.*

Fishing day pass: \$14.34
Reservation charge: \$4.35

Crafts	Rates (taxes not included)
Pedalo 1 hour	\$11.19
Recreational kayak 1 hour	\$10.09
Recreational kayak 4 hours	\$20.18
Canoe 1 hour	\$11.19
Canoe 4 hours*	\$22.38
Canoe 1 day	\$32.03
Rowboat 1 hour	\$10.75
Rowboat 4 hours*	\$21.28
Rowboat 1 day	\$30.50
Single kayak 1 hour	\$12.94
Single kayak 4 hours*	\$25.67
Single kayak 1 day	\$36.64
Double kayak 1 hour	\$17.55
Double kayak 4 hours*	\$34.88
Double kayak 1 day	\$49.80



*4-hour blocks vary according to body of water. Check prices.

Rates don't include the taxes.
Please note that rates can be changed without prior notice.



Lodging near the Park

Camping P. Mercier inc. ★★

244 Chemin de la Place Mercier
Mont-Brun, Québec J0Z 2Y0
Summer: 819 637-7027 • Winter: 819 637-7262
www.campingquebec.com

Camping Bel Évasion ★★

1447 Route 111 Taschereau
819 796-2521
Animals on leash accepted

Gîte Cassiro ★★★

380 Kirouac Avenue
Taschereau, Québec J0Z 3N0
819 796-3395
www.cassiro.qc.ca

Deville Motel ★★★

95 Horne Avenue
Rouyn-Noranda, Québec J9X 4S4
819 762-0725, 1 888 828-0725 • info@devilmotel.com

Hôtel Gouverneur Le Noranda ★★★★★

41 6th Street
Rouyn-Noranda, Québec J9X 1Y8
819 762-2341, 1 866 562-2341 • www.gouverneur.com
(See advertisement page 17)

THE HOTELS OF AMOS, ROUYN-NORANDA, VAL-D'OR AND LA SARRÉ INVITE YOU TO DISCOVER THE REGION.

Hôtel Alpin, Rouyn-Noranda, 1 800 567-6423 ★★★★★
Hôtel Amosphère, Amos, 1 800 567-7777 ★★★★★
Hôtel Forestel, Val-d'Or, 1 800 567-6599 ★★★★★
Motel Villa Mon Repos, La Sarre, 1 888 417-3767 ★★★★★
(See advertisement page 14)

Entry fees

Daily entry fees valid until March 31, 2008

Adult	\$3.50
Children 6 to 17 years	\$1.50
1 adult with children	\$5.00
2 adults with children	\$7.00
Child 0 to 5 years	Free

Recycle! It's important...

Glass...

Metal...

And plastic...

...are recyclable. Thank you for contributing to the protection of the environment by putting your containers in the tubs provided for this purpose, in all national parks in the Parcs Québec network.

The hotels are inviting you...
prolong your stay



Amosphère Resort
At the resort in Amos, you can combine lodging and relaxation in four-star comfort, 2 outdoor spas

Open all year
2 outdoor spas, dining room, exercise room, cycling, kayaking, free Internet

Réservation: 1 800 567-7777
1031 Route 111 Est, Amos
Internet site: www.amosphere.com
E-mail: amosphere@cablamos.com

Refuge Pageau
Michel Pageau dedicated his life to animals. His refuge is known around the world. Come and visit his work. The whole team is waiting for you.

For information:
1 (819) 732-8999
www.refugepageau.ca



Hôtel Alpin
Alpine Resort, luxurious rooms with free high-speed Internet, exercise room and dining facilities

260 Rideau Blvd.
Rouyn-Noranda
Reservations: 1 800 567-6423

Rouyn-Noranda, city of festivals!
Get caught up in the diversity of our events: **Festival des guitares du Monde** (World Guitar Festival) (May 28 to June 3), **Festival du DocuMenteur de l'Abitibi-Témiscamingue** (Mocumentary Festival) (July 25 to 28), **Osisko en lumière** (Osisko in Lights) (Aug. 3 to 5), **Aiguebelle en spectacle** (Aiguebelle Live) (Aug. 4 and 5), **Emerging Music Festival in Abitibi-Témiscamingue** (Aug. 30 to Sept. 2), **Festival du cinéma international en Abitibi-Témiscamingue** (International Film Festival) (Oct. 27 to Nov. 1).

For information:
1 (819) 797-3195



Convention Centre
The establishment offers you 72 spacious and tastefully appointed rooms with all the amenities, the La Villa restaurant, where you can taste the excellence of a meal cooked specially for you, and L'Ambiance bar.

Our «**Une nuit au paradis**» package includes:
• Dinner with a local flavour
• A ticket for the «**Le paradis du Nord**» musical
• One night in a first-class room
• Complete health breakfast
\$135 per person, double occupancy, taxes and service included

32 Route 111 Est
La Sarre (Québec) J9Z 1R7
For information:
1 (819) 333-2224 ou 1 888 417-3767
www.motelvillamonrepos.qc.ca

Le Paradis du nord
Discover the region through a major historical production that brings you the events that marked the development and settlement of Abitibi-Témiscamingue. A truly colourful show awaits you.

For information:
1 866 891-6342
Internet site:
www.leparadisdu nord.com



Forestel Hotel and Convention Centre
Located at the eastern entrance to Val-d'Or, the Forestel Hotel is a four-star complex, with 91 rooms and full dining services, known for its fine cuisine and designed not only for families but also social and business groups.

1001 3rd Avenue East, P.O. Box 967,
Val-d'Or, Québec J9P 4P8
Reservations/toll free: 1 800 567-6599
Internet site: www.hotelforestel.ca
E-mail: hotel@forestel.ca

City of gold!
A visit worth its weight in gold, to the city of gold!
Become a miner for a day and experience a unique descent 300 feet underground in the tunnels of the Lamaque mine, the deepest gold mine accessible to tourists in Canada.

For information:
1 819 825-7616
Internet site:
www.citedelor.com

ROUYN-NORANDA

City of sensations!

Horne Smelter



La maison Dumulon: homage to the region's pioneers
193 du Lac Avenue, Rouyn-Noranda • 819 797-7125

Rediscover the past at La maison Dumulon. A stirring testimony to the pioneers of our region, this site, famous since 1978, shows you the first general store, the first post office and one of the first Rouyn-Noranda residences. The permanent exhibition invites you to discover the rich history of the region through the mining discoveries and the boom-towns of Rouyn and Noranda. Guided visits all year. Summer opening hours: from Saint-Jean-Baptist Day to Labour Day, 8:30 a.m. to 5 p.m. daily.

© Sébastien Tessier



Église orthodoxe russe: the heritage of another culture
201 Taschereau West Street, Rouyn-Noranda • 819 797-7125

The église orthodoxe russe (Russian Orthodox Church) lifts the curtain on the history of immigrants and Rouyn-Noranda's Russian community in particular. Perched on a rocky crest, the church intrigues visitors first of all because its architecture is in sharp contrast with the Rouyn-Noranda landscape, and secondly because the interpretation concept marries tradition and high technology. A new Interpretation Centre about immigrants is now open in the basement. From Saint-Jean-Baptist Day to Labour Day, from 10 a.m. to 5 p.m. daily.

© Christian Leduc



Centre éducatif forestier du lac Joannès
703 des Cèdres Road (via Highway 117) McWatters • 819 762-8867 • www.afat.qc.ca

From the top of hundred-year-old cedars to the clear waters of Joannès Lake, there is life galore on the trails of the Centre éducatif forestier du lac Joannès, located at the very heart of Vaudray-Joannès Lakes Biodiversity Reserve. As a family, discover the pleasures of the forest in the gigantic labyrinth. Scan the forest in search of fauna on one of our seven foot trails. Breathe in nature on the bicycle paths or simply let yourself be surprised by the many possibilities offered by this exceptionally beautiful site. Open daily from June 24 until Labour Day from 10 a.m. to 6 p.m.

© Mathieu Dupuis AFAT

FEATURED ACTIVITIES
• labyrinth
• outdoor fitness
• history of life

(See advertisement page 9)



Destination OR
945-B, chemin du Parc, quartier Destor • 819 637-2727

This year, we're innovating with a ninth trail: «Gold fever». Come and experience the history of prospecting today and take the chance to win a prize in gold, diamonds, money, copper or zinc.
«Gold fever»: an ethnological and scientific journey. Explore the eight other trails including tests, that represent just as many eras of gold discovery. Take a walk in the woods when the prospector isn't there... and if he is there, watch your gold!

© Magnum Média

SCHEDULE: The site is open from the end of June to the end of September, daily, from 9:30 a.m. to 6 p.m. Note that from mid-May to the end of June, as well as from the end of September until mid-October, the site is open only by reservation.



Horne Smelter
101 Portelance Avenue, Rouyn-Noranda • 819 797-3195

Discover the secrets of copper processing by visiting one of the world's most specialized smelting factories. You will first enter the majestic guest house where major figures from the fields of mining, metallurgy and politics stayed at the beginning of the last century. You will then head towards the metallurgical installations where the Horne mining museum will reveal the secrets of the story of Edmund Horne, the prospector behind the discovery of the immense deposits of copper and gold that bear his name. You will then visit the heart of the copper processing activities, the smelting factory, where the copper flows. The large expanse of this metallurgical factory conveys the importance of its industrial activities to the city of Rouyn-Noranda. An impressive experience, and one you will remember for a long time.

© Maricéc Boudreau



Hydro-Québec telecontrol and training centres
1095 Saguenay Street, Rouyn-Noranda

This summer take the road electricity follows... from the power station to the house and, at the same time, discover the winding northern course of a river you thought you knew: the Ottawa River.

You will be guided through the facts and rumours by Renée Robitaille, our storyteller in «virtual residence.»

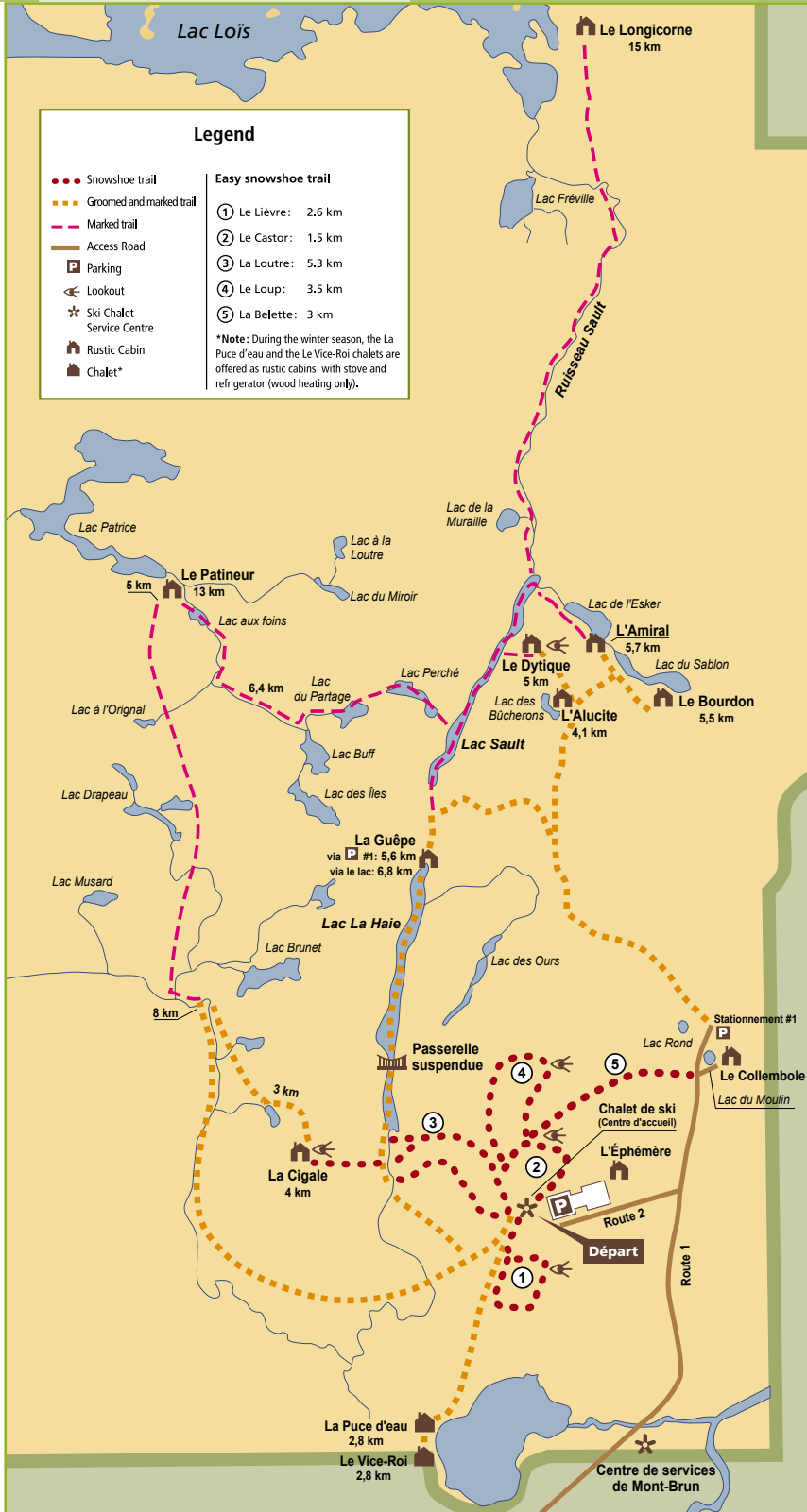
© Cyclopes

All summer, 7 days out of 7. Official photo identification required for those 18 years and over.

RÉSERVATION:
819 797-3195 and
1 888 797-3195

Parc national d'Aigüebelle...

Winter Map 2008



Long circuits

Enthusiasts of cross-country skiing and snowshoeing can take advantage of a 38-km network of marked trails linking 7 cozy rustic cabins. Routes are offered allowing you to create 2- to 4-day itineraries.

THE FAULTS: 3 DAYS/2 NIGHTS

Day	Suggested routes	Length	Duration
Day 1*	From the ski chalet to Le Dytique cabin or La Cigale	4 to 6 km	2 hours and 30 min. to 3 hours
Day 2	From La Cigale to the Le Dytique cabin	5 km (via La Haie Lake)	3 hours
Day 3	From the La Guêpe cabin to the ski chalet or the route 1 parking lot	6.5 km (via La Haie Lake)	3 hours and 30 min.

*The following rustic cabins are also available: Le Bourdon, l'Alucite and L'Amiral.

L'ESCAPADE BORÉALE: 4 DAYS/3 NIGHTS

Day	Suggested routes	Length	Duration
Day 1	From the ski chalet to the Le Patineur cabin	13 km	4 to 5 hours
Day 2	From the Le Patineur cabin to the La Guêpe or Le Dytique cabin	6.5 to 7.5 km (via La Haie Lake)	4 hours and 30 min.
Day 3	From the La Guêpe cabin or the Le Dytique cabin to the La Cigale cabin	5 to 8.5 km	3 hours to 5 hours and 30 min
Day 4	From the La Cigale cabin to the ski chalet	4 km	2 hours and 30 min.

EVASION PACKAGE: 3 DAYS/2 NIGHTS

Choose one of the suggested circuits and finish up at the Hôtel Gouverneur Le Noranda. Escape into relaxation and comfort with the Évasion package.

The package includes:

1 to 3 nights in the rustic cabin of your choice, baggage transportation included, 1 night at the Hôtel Gouverneur Le Noranda including a 4-course dinner, a full breakfast at the Le Cellier Restaurant, topped off with a one-hour massage session.

From \$189.75/stay/pers./double occ.

the wonder of winter

Outdoor equipment rental

Equipment	Rate
Bedding	\$14.04/stay
Stove	\$4.61/stay
Crockery	\$4.61/stay
Sleeping pads (self-inflating)	\$9.21/stay
Sleeping bag and hostel sheet	\$9.21/stay
Candleholder	\$4.61/stay
Backpack (90 liters)	\$9.21/stay
Backpack (70 litres)	\$9.21/stay
Backpack (30 liters)	\$4.61/stay
Baby carrier	\$13.82/stay
Sleigh	\$20.18/stay
Snowshoes for adult	\$12.94/day
Snowshoes for child (4 to 12 years)	\$8.78/day

BAGGAGE TRANSPORTATION

Prices by cabin

Le Bourdon, L'Alucite, L'Amiral, Le Dytique, La Puce d'eau and Le Vice-Roi: • \$10 one way only.
La Cigale and La Guêpe: • \$15 one way only.

Baggage transportation

By reservation only, from Wednesday to Sunday. Baggage must be left at the ski chalet by the scheduled time of departure. Baggage transport is not available for Le Patineur and Le Longicorne rustic cabins.

Please note there is no baggage transportation service on Dec. 25 or Jan. 1



Moonlight and Torches, on snowshoes

Don't miss the Moonlight and Torches activity March 15, 2008. Discover the forest by night, on snowshoes, guided by the moon and a few torches (bring a flashlight or headlamp). During the evening, a park warden will tell you "The Tale of the Fire Warden." You'll be carried away by the incredible story of a person who lived in the Abijévis hills. "The Tale of the Fire Warden" will take place at 8 p.m., followed by cheese fondue at 9:15 p.m.

Cost of the activity: get the information

Prices may be changed without notice. Taxes not included.

Prices and capacities of the rustic cabins*

Rustic cabins	Min. rate	Max. rate
La Guêpe, L'Alucite, Le Bourdon, Le Dytique, Le Patineur, L'Amiral: 2 people	\$52	\$52
La Puce d'eau: 3 people	\$78	\$78
Le Vice-Roi: 4 to 7 people	\$104	\$182
Le Longicorne: 4 to 8 people	\$104	\$208
L'Éphémère: 6 to 16 people	\$156	\$260
La Cigale: 2 to 4 people	\$52	\$104
Le Collembole: 3 to 4 people	\$78	\$104

Rate for additional people: \$26

* Certain terms and conditions apply.

For further information, contact the Park: 819 637-7322
Snow conditions: ParcsQuebec.com

Le Noranda HOTEL | CONGRES | SPA
GOUVERNEUR

41 6th Street, Rouyn-Noranda
Québec, Canada, J9X 1Y8
T: 819.762.2341
F: 819.762.8991
www.lenoranda.com

Le Cellier
Resto / Bar à Vin

JARDIN SPA
MASSOTHERAPIE

CONVENTION CENTRE
72 ROOMS
RESTO / WINE BAR
MASSAGE THERAPY
POOL, JACUZZI

Conservation, it's everybody's business

Be our partner! With your help, we will be able to offer you tranquility, ensure your safety and, above all, protect the natural habitat for the visitor of today and of tomorrow.

Some rules to respect

It is important that visitors take care to respect the environment. To do that, it is necessary to refrain from:

- ▶ bringing pets, unless it is a working guide-dog or a guide-dog in training (proof required);
- ▶ killing, capturing, hurting, molesting, harassing, feeding or taming animals;
- ▶ throwing trash anywhere except in the containers provided, or burning trash in camp fires;
- ▶ cutting down, damaging, removing or bringing in trees, shrubs or herbaceous plants or any parts of them;
- ▶ collecting dead wood;
- ▶ leaving dishes or food lying around. Out of respect for the wildlife, food should be stored in vehicles or a closed places;
- ▶ washing dishes under the taps at the site entrance in order to avoid surprise visits by animals during the night. Instead, use the sink adjoining the washroom buildings.

The list of the activities allowed at the Parc national d'Aigüebelle is displayed in the information shelters at the park entrances.

LODGING

Hours of arrival, departure and extension

Lodging	Hour of arrival	Hour of departure
Camping	3 p.m.	3 p.m.
Chalet	5 p.m.	1 p.m.
Rustic cabin	5 p.m.	1 p.m.

The camp must be set up before 10 p.m. and access to camping sites is restricted to campers after this hour.

A paid camping site doesn't give its occupant priority for extending his stay.

Reimbursement, cancellation and modification

No reimbursements will be granted for late arrivals or departures before the end of a stay for reasons beyond the control of Sépaq. Ask about methods for reserving and cancelling.

General regulations

For the peace and tranquility of the site and visitors, all persons staying in a park must abstain from making excessive noise at all times (this includes the use of a radios, generators, and air-conditioning systems, etc.).

The curfew is in force from 11 p.m. to 8 a.m.;

A camping site can accommodate:

- ▶ a maximum of 6 people; the basic rate being fixed for 2 adults, charges apply for additional adults;
- ▶ in the case of a family, children less than 18 years of age and a maximum of two adults are accepted;
- ▶ two tents or only one tent and registered recreational equipment are allowed where the site permits it;
- ▶ a cooking tent without flooring, if the area is appropriate.

Group camping: a group is constituted by a minimum of 15 people, without distinction as to the composition of the group.

Canoe camping/kayak camping: the maximum number of occupants by site is 2 adults or 2 adults with 2 children.

Only one car can be parked on the site. All additional vehicles must be parked in the areas designated and identified for this purpose. Parking fees are then applicable.

In order to protect the vegetation that surrounds a camping site, the camp must be set up solely on the part designated for this purpose.

Camp fires or cooking fires are only authorized in places where it is permitted and which are designated for this purpose; fires must be extinguished before campers retire for the night. At all times, fires must be monitored by a responsible person.

To dry clothes, the use of a tarp or cord is permitted; it must be removed after use.

Visitors are admitted until 8 p.m. and must leave the park by 10 p.m. at the latest.

When driving a vehicle on the roads in the camping sector, the maximum speed allowed is 10 km/h.

In case of emergency, please ring at the Abijévis campground convenience store or call 911.

Property and breakage of equipment

Customers with accommodations must always leave their campsites and any equipment they use clean and in good condition.

All breakage caused to Sépaq facilities will be billed to the customer. Likewise, sites and buildings left in state of dirtiness will be cleaned at the customer's expenses.

Public security

The park director can temporarily prohibit the entry or the practice of an activity throughout the park or in a part of the park:

- if there is a risk to the safety of individuals;
- if the support capacity of facilities is either reached or exceeded;
- if there is risk of deterioration of the natural habitat;
- if it is necessary to protect an animal or plant species.

Expulsion

A person who violates these regulations can be expelled immediately and without reimbursement.



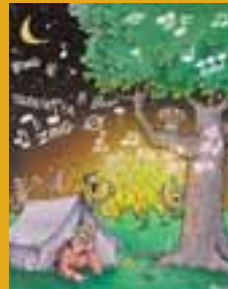
Leave your favourite animal at home because it can influence the behaviour of wildlife and disturb other visitors.



Don't feed the animals because this practice modifies their behaviour and creates dependence.



Stay on the trails and do your part to protect habitats and their species.



Respect the tranquility of the site and use earphones when listening to a radio.

Illustrations : François Bouter - Parc de la Jacques-Cartier

Free guided tours

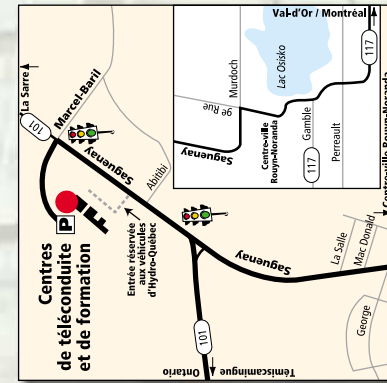
For the whole family

Something for everyone...

Regional control and training centres
Free guided tours

From June 24th thru september 3rd, 2006
Seven days a week

Reservations:
819 797-3195 or 1 888 797-3195



Location: 1095, rue Saguenay, Rouyn-Noranda
Notice: (Parking at the back)
Mandatory presentation of an official identification document with your picture for people age 18 and over.

A video performance

Échos
d'une grande rivière

On screen Renée Robitaille, conteuse
(In French only)

School visits

Youth activities

