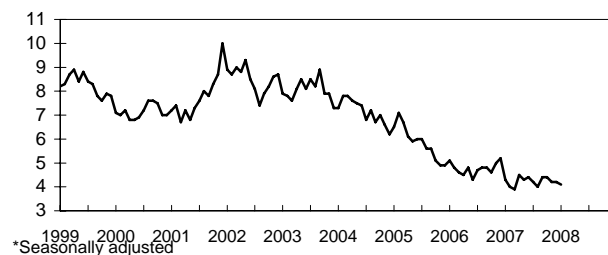


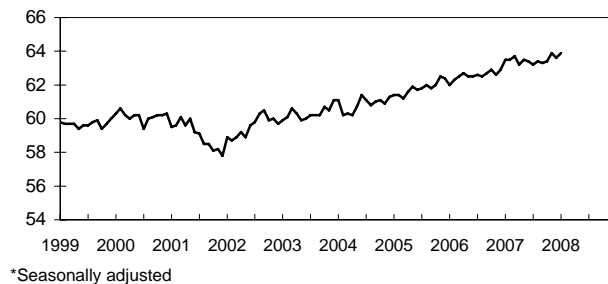
1 Summary for January 2008--Actual and Seasonally Adjusted

| | Current January 2008 | | Previous Month December 2007 | | One Year Ago January 2007 | | Change from December 2007 | | Change from January 2007 | |
|-------------------------------|-------------------------|----------|---------------------------------|----------|------------------------------|----------|------------------------------|-------|-----------------------------|-------|
| | Actual | S.A. | Actual | S.A. | Actual | S.A. | Actual | S.A. | Actual | S.A. |
| British Columbia | | | | | | | | | | |
| Working Age Population ('000) | 3609.5 | | 3602.7 | | 3543.7 | | 0.2% | | 1.9% | |
| Labour Force ('000) | 2381.4 | 2402.9 | 2377.5 | 2393.5 | 2325.4 | 2352.1 | 0.2% | 0.4% | 2.4% | 2.2% |
| Employment ('000) | 2274.3 | 2305.2 | 2287.3 | 2292.9 | 2213.4 | 2251.8 | -0.6% | 0.5% | 2.8% | 2.4% |
| Unemployment ('000) | 107.1 | 97.7 | 90.2 | 100.6 | 112.0 | 100.3 | 18.7% | -2.9% | -4.4% | -2.6% |
| Employment Rate ¹ | 63.0% | 63.9% | 63.5% | 63.6% | 62.5% | 63.5% | | | | |
| Unemployment Rate | 4.5% | 4.1% | 3.8% | 4.2% | 4.8% | 4.3% | | | | |
| Participation Rate | 66.0% | 66.6% | 66.0% | 66.4% | 65.6% | 66.4% | | | | |
| Canada | | | | | | | | | | |
| Working Age Population ('000) | 26,751.8 | | 26,719.5 | | 26,392.3 | | 0.1% | | 1.4% | |
| Labour Force ('000) | 17,834.0 | 18,109.5 | 17,929.1 | 18,090.2 | 17,547.2 | 17,821.8 | -0.5% | 0.1% | 1.6% | 1.6% |
| Employment ('000) | 16,710.8 | 17,058.9 | 16,929.8 | 17,012.5 | 16,364.9 | 16,722.4 | -1.3% | 0.3% | 2.1% | 2.0% |
| Unemployment ('000) | 1,123.2 | 1,050.6 | 999.3 | 1,077.6 | 1,182.3 | 1,099.4 | 12.4% | -2.5% | -5.0% | -4.4% |
| Employment Rate ¹ | 62.5% | 63.8% | 63.4% | 63.7% | 62.0% | 63.4% | | | | |
| Unemployment Rate | 6.3% | 5.8% | 5.6% | 6.0% | 6.7% | 6.2% | | | | |
| Participation Rate | 66.7% | 67.7% | 67.1% | 67.7% | 66.5% | 67.5% | | | | |

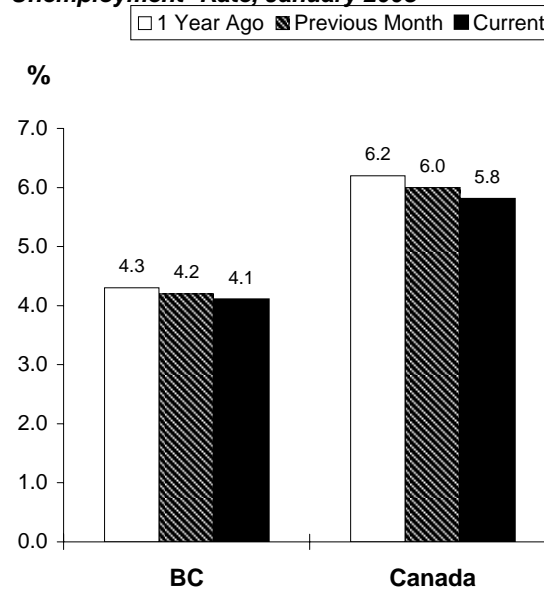
BC Unemployment Rate*:



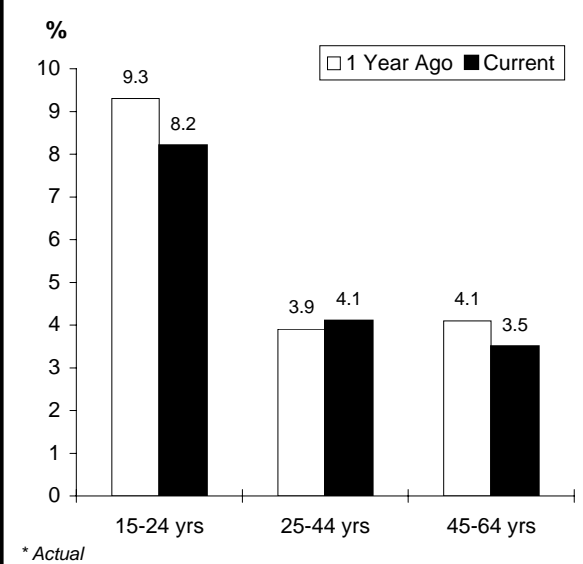
BC Employment¹ Rate*:



Unemployment* Rate, January 2008



BC Unemployment* Rates by Age, January 2008



¹ Employment rate is calculated as employment as a percent of the working age population.