
Earnings and Employment Trends ♦ September 1999

The Proposed Extension of Employment Insurance (EI) Maternity Benefits Could Decrease BC's Unemployment Rate

In mid-October, the Federal Government announced their intention to extend parental benefits under the EI program from 25 weeks to a proposed maximum of 52 weeks. The change is scheduled to come into effect in January 2001.



The current EI rules provide the mother with 15 weeks of maternity benefits after which either parent is entitled to a further 10 weeks of parental benefits. In 1998, there was an average of 5,760 beneficiaries¹ on maternity leave and a further 3,560 beneficiaries on parental leave each month. This represents a total of 9,320 parents each month taking advantage of the EI maternity/parental program.

The data show that more than 90 per cent of those mothers who take advantage of EI subsidized maternity leave, either the mother or the father continue on to parental leave. Under the proposed new plan, we could expect the average number of beneficiaries on maternity/parental leave to increase by approximately 9,000, up to 18,000 each month, assuming that the same proportion will take their full entitlement of 52 weeks of subsidized leave.

There has been much concern expressed, particularly by the business community, regarding the EI funding of the resulting increased costs of this new program. Using the employee/business premiums of an unemployment insurance fund to finance a federal social program to benefit children, hardly meets the criteria of an insurance plan. However, there may be some justification in the funding source. Given that many of the jobs held by staff on maternity/parental leave will have to be back-filled through the hiring of new employees, many of those replacements likely will be recruited from the unemployed receiving EI. The extent that this occurs will directly reduce the costs to the EI fund. In fact, the net costs of the proposed expanded program could be minimal.

In addition to the long-term benefits that will accrue to both individuals and society due to parents spending a full year with their new-borns, the proposed scheme could also reduce BC's unemployment rate. Up to an additional 9,000 unemployed persons might be able to find jobs filling in for parents on leave. At best, the unemployment rate could be reduced by close to one-half a percentage point. Put in context to BC's current unemployment rate of 8.0 per cent, a 9,000 reduction in the number of unemployed could reduce that rate to as low as 7.5 per cent.

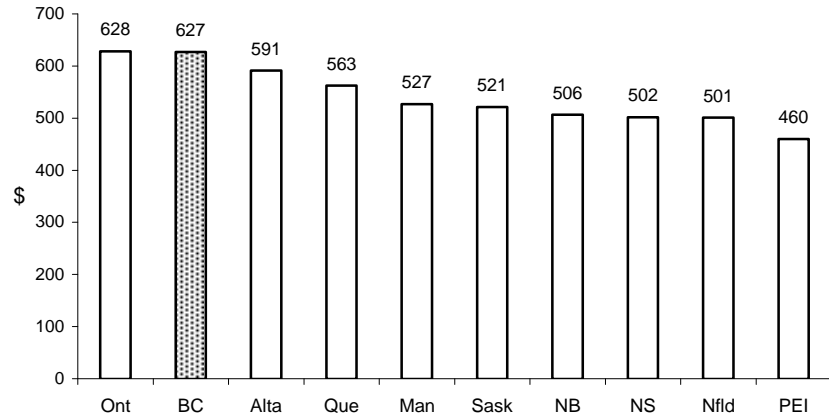
¹ This number includes approximately 40 adoptive parents

In fact, EI maternity insurance has aspects of a work-sharing program where the new parent(s) are being subsidized by society to take leave in order to work at full-time parenting while the “unemployed” are being compensated by employers to temporarily fill in for their employees on parental leave. In this context, the expanded program could be a win-win situation.

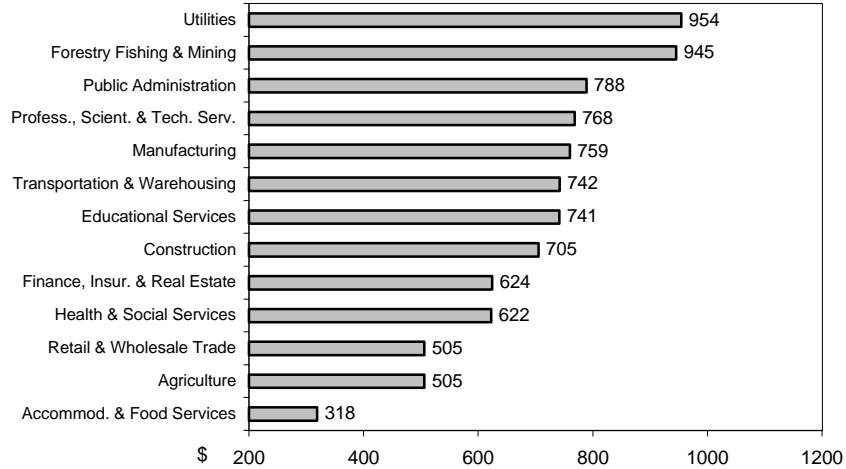
TITLES OF PREVIOUS ISSUES	ISSUE NUMBER
Changes to “Earnings and Employment Trends”	99-08
The EI Program – Regional Differences	99-05
The Impending Labour Shortage in BC	99-.04
Incidence of Low Income	99-03
BC Youth and the Minimum Wage	99-02
Minimum Wage Workers in BC	99-01
Economic Diversity in the Regions	98-12
Youth in BC – Their Job Prospects Are Improving	98-11
BC Men – Their Labour Market Participation Declines	98-10
BC Women – Strong Labour Market in 1998	98-09
Labour Market Comparisons – CMA’s to rest of BC	98-08
BC’s Recent Employment Growth	98-07
Changes in Earning Capacity: 1990 to 1995	98-06
Occupational Integration of Men & Women	98-05
Who Works Overtime – The Gender Gap	98-04
The Changing Structure of the Work-Week	98-03
Multi-Job Holders in BC	98-02
Gender Economic Equality - Progress in BC	98-01
Education Levels of Income Assistance Recipients	97-12
BC’s Unemployed and Unemployment Insurance	97-11
Important Sectors for Youth Employment	97-10
Duration of Unemployment	97-09
Men and Women in the BC Job Market—20 Yr Persp.	97-08
Workers’ Pensions	97-07
Youth: How Have They Fared in the '90s?	97-06
The Value of Education—It pays to stay in school	97-05
Service Producing Industries in BC	97-04

Average Weekly Wage Rate* - September 1999

by Province



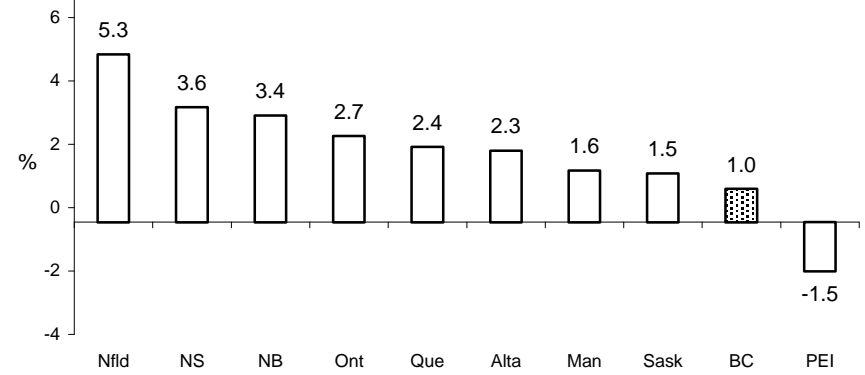
by Industry



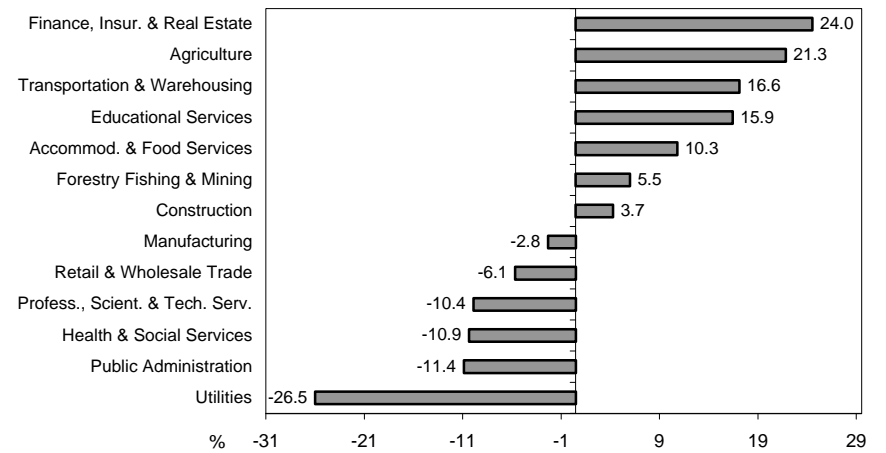
* Latest 12 month average

Employment Growth* - July 1999

by Province



by Industry



* Month over same month previous year (unadjusted)

SUMMARY TRENDS

	Consumer Price Index			Average Weekly Wage Rate						Employment Growth (Actual)			Unemployment Rate			
				Current Dollars			Constant Dollars						Seasonally Adjusted			
	BC	Canada	U.S.A.	BC	Canada	U.S.A.	BC	Canada	U.S.A.	BC	Canada	U.S.A.				
	% Change			% Change			% Change			(%)						
1989	4.5	5.0	4.8			3.7			-1.0	5.5	2.1	2.1	9.1	7.5	5.3	
1990	5.4	4.8	5.4			3.5			-1.8	2.5	0.6	1.3	8.4	8.1	5.6	
1991	5.4	5.6	4.2			2.6			-1.6	1.5	-1.9	-0.9	10.0	10.4	6.9	
1992	2.7	1.5	3.0			2.8			-0.2	2.2	-0.6	0.7	10.5	11.3	7.5	
1993	3.5	1.8	2.9			2.9			-0.1	2.9	1.3	1.5	9.7	11.2	6.9	
1994	1.9	0.2	2.6			3.0			0.4	4.0	2.1	2.3	9.4	10.4	6.1	
1995	2.3	2.2	2.8			2.2			-0.6	1.7	1.6	1.5	9.0	9.5	5.6	
1996	0.9	1.6	2.9			3.4			0.4	2.5	1.3	1.4	8.9	9.7	5.4	
1997	0.7	1.6	2.3			4.4			2.0	1.8	1.9	2.2	8.7	9.2	5.0	
1998	0.3	0.9	1.6	1.4	1.6	4.2	1.1	0.6	2.6	1.2	2.8	1.5	8.9	8.3	4.5	
1998	Jan	0.4	1.1	1.5	0.2	2.0	5.2	-0.2	0.9	3.6	-1.1	2.6	2.0	9.5	8.8	4.7
	Feb	-0.1	1.0	1.5	1.0	1.9	4.4	1.1	0.8	2.9	-0.2	3.3	1.9	9.8	8.6	4.6
	Mar	0.1	0.9	1.4	0.9	1.6	3.7	0.8	0.7	2.3	1.0	3.0	1.6	9.9	8.4	4.7
	Apr	0.2	0.8	1.4	1.2	1.3	4.1	1.0	0.5	2.7	1.3	3.3	1.5	9.2	8.4	4.3
	May	0.3	1.1	1.7	0.5	1.5	4.6	0.2	0.4	2.8	1.2	2.7	1.4	9.5	8.4	4.4
	Jun	0.4	1.0	1.7	2.7	1.9	4.6	2.3	0.9	2.8	0.9	2.0	1.4	9.3	8.4	4.4
	Jul	0.5	1.0	1.8	0.1	1.3	4.6	-0.5	0.3	2.8	0.0	2.1	1.2	8.9	8.4	4.5
	Aug	0.4	0.8	1.6	1.8	1.8	3.9	1.4	1.0	2.3	0.5	2.1	1.2	8.7	8.3	4.5
	Sep	0.0	0.7	1.5	1.2	1.3	3.8	1.2	0.5	2.3	1.6	2.4	1.5	8.2	8.3	4.5
	Oct	0.4	1.0	1.5	1.8	1.8	3.9	1.4	0.7	2.3	2.9	3.0	1.5	8.0	8.0	4.5
	Nov	0.2	1.2	1.5	2.6	1.3	3.5	2.4	0.0	1.9	3.4	3.4	1.1	7.8	8.0	4.4
	Dec	0.3	1.0	1.6	2.7	1.1	3.8	2.5	0.1	2.2	3.2	3.2	1.5	8.2	8.0	4.3
1999	Jan	0.2	0.6	1.7	2.4	1.0	3.4	2.2	0.4	1.7	6.0	3.8	1.8	8.1	7.8	4.3
	Feb	0.5	0.7	1.6	1.6	1.6	3.4	1.0	0.8	1.8	5.9	3.4	1.6	8.1	7.8	4.4
	Mar	0.5	1.0	1.7	1.2	2.3	3.5	0.7	1.2	1.7	3.8	2.9	1.5	8.4	7.8	4.2
	Apr	1.1	1.7	2.3	0.7	2.3	3.2	-0.4	0.6	0.9	2.7	2.5	1.4	8.8	8.3	4.3
	May	0.7	1.6	2.1	0.6	2.2	2.6	-0.1	0.6	0.5	1.4	2.4	1.4	8.4	8.1	4.2
	Jun	1.0	1.6	2.0	-0.1	2.1	3.5	-1.1	0.5	1.5	2.1	2.6	1.7	8.6	7.6	4.3
	Jul	1.4	1.8	2.1	1.8	2.7	3.5	0.3	0.8	1.3	0.8	2.6	1.6	8.6	7.7	4.3
	Aug	1.3	2.1	2.3	1.5	3.3	3.5	0.3	1.2	1.2	1.1	2.1	1.6	8.6	7.8	4.2
	Sep	2.0	2.6		0.2	2.9		-1.8	0.3		1.0	2.4		8.0	7.5	
	Oct															
	Nov															
	Dec															

Monthly percent changes are calculated as month over same month previous year

2.1

PROVINCIAL COMPARISON - AVERAGE WEEKLY WAGE RATE

	Canada		BC		Alberta		Sask		Manitoba		Ontario		Quebec		NB		NS		PEI		Nfld	
	\$	% Chg	\$	% Chg	\$	% Chg	\$	% Chg	\$	% Chg	\$	% Chg	\$	% Chg	\$	% Chg	\$	% Chg	\$	% Chg	\$	% Chg
1989																						
1990																						
1991																						
1992																						
1993																						
1994																						
1995																						
1996																						
1997	573.89		613.65		561.89		507.04		509.08		605.55		550.88		491.39		481.44		440.28		497.85	
1998	582.85	1.6	622.21	1.4	577.12	2.7	511.71	0.9	518.86	1.9	613.73	1.4	558.82	1.4	497.44	1.2	493.59	2.5	448.90	2.0	496.10	-0.4
1998 Jan	580.24	-5.1	612.51	7.7	568.35	2.3	507.52	1.1	510.83	2.3	613.28	2.3	557.41	2.3	509.49	5.6	491.61	3.1	440.78	0.6	493.43	-1.7
Feb	579.30	-5.1	616.62	8.4	564.66	1.0	504.04	-0.3	518.55	3.9	611.65	2.2	555.58	2.3	500.61	2.4	487.56	2.5	446.20	-0.6	499.82	-2.0
Mar	578.66	-4.8	613.65	7.7	565.56	2.7	509.29	-0.5	513.00	3.2	610.98	1.7	555.50	1.5	503.31	1.8	483.94	2.4	448.65	1.1	496.78	-2.4
Apr	581.11	-4.3	614.14	7.1	562.45	0.7	508.16	-0.3	525.54	3.7	613.66	1.3	559.05	1.3	500.67	1.7	492.60	2.8	457.27	1.4	505.71	-1.5
May	582.92	-5.4	618.87	7.8	568.24	1.7	514.28	2.6	522.53	2.7	615.54	1.6	561.42	1.3	487.81	0.2	494.36	5.0	448.84	0.2	499.54	-1.4
Jun	584.99	-4.4	628.70	9.6	576.11	3.1	518.75	3.0	519.61	0.1	615.35	1.6	563.91	1.7	487.23	0.2	493.12	3.0	444.71	1.1	491.37	-1.3
Jul	581.40	-6.0	619.11	7.9	581.78	2.8	516.96	1.6	520.87	2.3	611.23	1.2	558.85	1.3	494.58	1.7	491.65	2.5	440.77	1.4	481.62	-2.0
Aug	583.85	-5.0	625.15	9.0	579.55	2.5	516.99	0.5	522.50	1.8	613.92	1.9	561.86	1.5	489.33	1.0	499.06	3.2	449.14	5.2	483.02	-1.2
Sep	586.27	-5.6	628.33	8.6	583.84	2.9	516.78	1.4	520.76	0.8	615.63	0.6	562.32	1.7	499.41	1.1	501.92	1.5	459.05	6.3	500.91	0.7
Oct	586.13	-5.4	630.13	9.4	588.56	3.8	513.87	1.4	520.16	1.0	615.64	1.0	559.13	2.1	502.77	1.5	497.93	2.2	455.08	4.6	495.83	2.0
Nov	584.78	-4.8	630.29	9.1	595.28	5.4	508.27	-0.1	519.52	1.8	611.84	0.4	557.12	0.1	499.49	-0.4	495.88	2.4	450.12	2.1	502.65	4.1
Dec	584.01	-4.4	627.46	8.6	589.87	3.8	504.55	0.4	511.95	-0.1	615.83	0.7	553.03	0.3	497.87	-1.3	492.23	-0.1	446.50	-0.5	505.58	2.0
1999 Jan	586.09	1.0	627.19	2.4	589.07	3.6	512.90	1.1	517.71	1.3	618.17	0.8	553.82	-0.6	510.19	0.1	494.18	0.5	450.49	2.2	507.92	2.9
Feb	588.28	1.6	626.43	1.6	594.98	5.4	516.97	2.6	513.63	-0.9	621.86	1.7	553.91	-0.3	510.59	2.0	499.44	2.4	453.44	1.6	505.05	1.0
Mar	591.68	2.3	620.75	1.2	588.88	4.1	519.54	2.0	520.13	1.4	628.20	2.8	562.59	1.3	501.01	-0.5	496.96	2.7	466.88	4.1	508.17	2.3
Apr	594.49	2.3	618.67	0.7	589.07	4.7	520.15	2.4	526.21	0.1	629.84	2.6	570.06	2.0	509.56	1.8	503.02	2.1	460.83	0.8	515.49	1.9
May	595.73	2.2	622.51	0.6	584.40	2.8	526.63	2.4	529.13	1.3	634.83	3.1	567.72	1.1	508.14	4.2	507.65	2.7	468.59	4.4	496.60	-0.6
Jun	597.02	2.1	628.27	-0.1	587.93	2.1	530.83	2.3	540.47	4.0	636.73	3.5	566.18	0.4	509.00	4.5	501.71	1.7	466.89	5.0	497.37	1.2
Jul	597.08	2.7	630.09	1.8	587.52	1.0	528.20	2.2	540.02	3.7	636.63	4.2	567.09	1.5	513.23	3.8	506.96	3.1	457.97	3.9	485.42	0.8
Aug	603.31	3.3	634.81	1.5	598.61	3.3	539.61	4.4	543.92	4.1	642.68	4.7	571.64	1.7	509.92	4.2	513.56	2.9	466.56	3.9	491.69	1.8
Sep	603.16	2.9	629.51	0.2	600.47	2.8	536.15	3.7	540.58	3.8	644.55	4.7	569.94	1.4	505.93	1.3	511.30	1.9	472.53	2.9	499.31	-0.3
Oct																						
Nov																						
Dec																						
Average:																						
Jan-Sep98	582.08		619.68		572.28		512.53		519.35		613.47		559.54		496.94		492.87		448.38		494.69	
Jan-Sep99	595.20		626.47		591.21		525.66		530.20		632.61		564.77		508.62		503.86		462.69		500.78	
% Change	2.3		1.1		3.3		2.6		2.1		3.1		0.9		2.4		2.2		3.2		1.2	

Monthly percent changes are calculated as month over same month previous year

2.2

PROVINCIAL COMPARISON - AVERAGE HOURLY WAGE RATE

	Canada		BC		Alberta		Sask		Manitoba		Ontario		Quebec		NB		NS		PEI		Nfld	
	\$	% Chg	\$	% Chg	\$	% Chg	\$	% Chg	\$	% Chg	\$	% Chg	\$	% Chg	\$	% Chg	\$	% Chg	\$	% Chg	\$	% Chg
1989																						
1990																						
1991																						
1992																						
1993																						
1994																						
1995																						
1996																						
1997	15.60		16.95		14.76		13.63		13.81		16.32		15.36		12.97		12.91		11.78		13.20	
1998	15.81	1.3	17.21	1.5	15.22	3.1	13.79	1.2	14.08	2.0	16.50	1.1	15.51	1.0	13.11	1.1	13.15	1.9	11.98	1.7	13.10	-0.8
1998																						
Jan	15.83	1.2	17.03	-0.1	15.00	1.5	13.78	0.1	13.98	1.2	16.56	1.3	15.60	1.6	13.58	3.8	13.33	2.5	12.10	-1.2	13.43	-2.2
Feb	15.81	0.9	17.10	-0.1	14.88	0.5	13.65	-1.1	14.17	2.2	16.54	1.2	15.55	1.4	13.34	1.1	13.27	2.2	12.35	-0.2	13.55	-1.7
Mar	15.79	0.9	17.03	0.4	14.95	1.7	13.93	0.4	14.03	1.1	16.47	0.9	15.60	1.2	13.41	0.8	13.10	2.0	12.37	0.2	13.48	-2.5
Apr	15.84	0.9	17.09	0.9	14.95	0.9	13.74	-0.9	14.29	2.7	16.55	0.9	15.62	0.9	13.31	1.1	13.22	1.6	12.49	0.6	13.52	-1.0
May	15.77	1.0	17.13	0.7	14.88	1.2	13.76	1.9	14.23	3.4	16.51	1.2	15.53	0.4	12.92	0.3	13.03	2.1	11.80	0.6	13.38	-1.5
Jun	15.75	1.8	17.28	2.9	15.09	3.5	13.79	3.3	14.05	1.8	16.45	1.3	15.48	1.2	12.77	1.0	12.99	2.4	11.59	1.1	12.81	-1.1
Jul	15.58	1.6	17.03	1.4	15.08	3.4	13.66	2.3	13.92	2.8	16.29	1.4	15.27	1.1	12.80	1.5	12.79	1.8	11.54	2.7	12.32	-2.5
Aug	15.60	1.7	17.02	1.5	15.03	3.2	13.61	0.5	13.88	1.8	16.36	2.1	15.27	0.6	12.65	1.1	12.96	2.6	11.61	4.9	12.55	0.9
Sep	15.90	1.6	17.40	2.0	15.42	3.4	13.86	1.6	14.11	1.4	16.58	1.0	15.57	1.4	13.09	1.6	13.36	1.6	11.97	5.6	12.97	1.4
Oct	15.94	1.9	17.49	2.7	15.69	5.5	13.95	2.3	14.08	1.7	16.57	0.8	15.56	1.5	13.18	1.2	13.36	2.1	11.96	4.4	13.03	-0.2
Nov	15.96	1.5	17.48	2.9	15.85	6.6	13.87	0.9	14.17	2.3	16.54	0.6	15.62	0.1	13.16	-0.2	13.32	2.3	12.06	1.3	13.15	0.8
Dec	15.97	1.5	17.38	2.8	15.81	5.5	13.83	1.5	14.10	1.1	16.64	0.8	15.53	0.3	13.27	-1.0	13.17	-0.2	12.31	0.4	13.32	-0.1
1999																						
Jan	16.07	1.5	17.39	2.1	15.78	5.2	14.08	2.2	14.24	1.9	16.77	1.3	15.60	0.0	13.62	0.3	13.40	0.5	12.49	3.2	13.56	1.0
Feb	16.08	1.7	17.36	1.5	15.85	6.5	14.17	3.8	14.20	0.2	16.82	1.7	15.54	-0.1	13.63	2.2	13.45	1.4	12.54	1.5	13.51	-0.3
Mar	16.13	2.2	17.19	0.9	15.77	5.5	14.20	1.9	14.27	1.7	16.91	2.7	15.74	0.9	13.41	0.0	13.44	2.6	12.75	3.1	13.54	0.4
Apr	16.16	2.0	17.14	0.3	15.75	5.4	14.12	2.8	14.41	0.8	16.93	2.3	15.82	1.3	13.53	1.7	13.47	1.9	12.66	1.4	13.63	0.8
May	16.08	2.0	17.11	-0.1	15.53	4.4	14.22	3.3	14.45	1.5	16.93	2.5	15.70	1.1	13.29	2.9	13.48	3.5	12.14	2.9	13.11	-2.0
Jun	16.05	1.9	17.26	-0.1	15.53	2.9	14.18	2.8	14.61	4.0	16.96	3.1	15.49	0.1	13.20	3.4	13.35	2.8	12.02	3.7	12.85	0.3
Jul	15.95	2.4	17.20	1.0	15.37	1.9	14.00	2.5	14.44	3.7	16.86	3.5	15.45	1.2	13.27	3.7	13.30	4.0	11.66	1.0	12.45	1.1
Aug	16.07	3.0	17.22	1.2	15.63	4.0	14.17	4.1	14.56	4.9	16.98	3.8	15.59	2.1	13.13	3.8	13.37	3.2	11.74	1.1	12.45	-0.8
Sep	16.29	2.5	17.36	-0.2	15.83	2.7	14.39	3.8	14.67	4.0	17.21	3.8	15.83	1.7	13.33	1.8	13.55	1.4	12.33	3.0	12.94	-0.2
Oct																						
Nov																						
Dec																						
Average:																						
Jan-Sep98	15.76		17.12		15.03		13.75		14.07		16.48		15.50		13.10		13.12		11.98		13.11	
Jan-Sep99	16.10		17.25		15.67		14.17		14.43		16.93		15.64		13.38		13.42		12.26		13.12	
% Change	2.1		0.7		4.3		3.0		2.5		2.7		0.9		2.2		2.3		2.3		0.0	

Monthly percent changes are calculated as month over same month previous year

Produced by: BC STATS

Source: Statistics Canada Labour Force Survey

2.3

PROVINCIAL COMPARISON - EMPLOYMENT (Actual)

	Canada		BC		Alberta		Sask		Manitoba		Ontario		Quebec		NB		NS		PEI		Nfld	
	('000)	% Chg	('000)	% Chg	('000)	% Chg	('000)	% Chg	('000)	% Chg	('000)	% Chg	('000)	% Chg	('000)	% Chg	('000)	% Chg	('000)	% Chg	('000)	% Chg
1989	13,086.0		1,523.7		1,253.5		457.9		512.6		5,240.8		3,156.8		296.1		384.3		54.6		205.8	
1990	13,165.1	0.6	1,561.4	2.5	1,277.0	1.9	458.5	0.1	518.0	1.1	5,225.5	-0.3	3,172.1	0.5	301.9	2.0	390.0	1.5	55.2	1.1	205.5	-0.1
1991	12,916.1	-1.9	1,585.1	1.5	1,289.8	1.0	458.4	0.0	505.6	-2.4	5,043.6	-3.5	3,098.9	-2.3	296.8	-1.7	381.8	-2.1	53.4	-3.3	202.6	-1.4
1992	12,842.0	-0.6	1,619.3	2.2	1,284.8	-0.4	450.5	-1.7	498.0	-1.5	5,000.8	-0.8	3,067.2	-1.0	302.2	1.8	371.2	-2.8	54.1	1.3	193.9	-4.3
1993	13,014.7	1.3	1,665.9	2.9	1,296.4	0.9	454.6	0.9	508.7	2.1	5,088.6	1.8	3,079.5	0.4	305.2	1.0	368.2	-0.8	54.4	0.6	193.2	-0.4
1994	13,291.7	2.1	1,732.8	4.0	1,337.2	3.1	456.7	0.5	511.1	0.5	5,160.0	1.4	3,156.2	2.5	307.3	0.7	379.7	3.1	56.1	3.1	194.6	0.7
1995	13,505.5	1.6	1,761.6	1.7	1,373.2	2.7	460.0	0.7	521.4	2.0	5,231.3	1.4	3,204.1	1.5	313.6	2.1	384.3	1.2	58.7	4.6	197.3	1.4
1996	13,676.2	1.3	1,805.8	2.5	1,412.7	2.9	461.2	0.3	525.5	0.8	5,310.7	1.5	3,212.6	0.3	312.8	-0.3	385.0	0.2	60.1	2.4	189.7	-3.9
1997	13,940.6	1.9	1,837.7	1.8	1,456.9	3.1	474.2	2.8	538.3	2.4	5,412.9	1.9	3,260.3	1.5	316.1	1.1	391.9	1.8	60.5	0.7	191.9	1.2
1998	14,326.4	2.8	1,860.4	1.2	1,514.0	3.9	478.6	0.9	546.1	1.4	5,612.9	3.7	3,327.5	2.1	324.2	2.6	403.7	3.0	60.9	0.7	197.9	3.1
1998 Jan	13,684.9	2.6	1,765.2	-1.1	1,471.1	5.6	466.8	4.3	528.2	0.4	5,402.2	4.1	3,131.6	0.8	296.4	2.4	387.0	4.1	54.6	0.6	182.0	2.8
Feb	13,822.9	3.3	1,777.9	-0.2	1,468.4	5.0	468.2	3.3	531.2	0.4	5,449.4	5.1	3,201.9	2.1	298.8	3.1	391.6	6.0	54.1	1.5	181.3	2.4
Mar	13,890.1	3.0	1,807.6	1.0	1,466.5	3.4	466.6	3.2	534.2	1.8	5,452.8	4.1	3,244.0	2.2	295.3	2.8	388.1	3.7	54.7	0.4	180.5	1.7
Apr	14,031.4	3.3	1,830.2	1.3	1,494.1	5.7	468.7	1.2	536.5	1.6	5,517.2	4.3	3,252.9	2.1	303.2	2.7	388.2	4.9	55.1	0.7	185.3	5.3
May	14,386.5	2.7	1,865.5	1.2	1,525.6	4.3	485.4	0.1	546.8	1.1	5,631.9	3.8	3,336.0	1.3	327.3	3.3	408.5	4.9	64.9	4.0	194.8	6.3
Jun	14,639.3	2.0	1,892.7	0.9	1,538.9	3.7	489.1	-0.5	551.4	0.1	5,708.6	3.2	3,415.6	0.3	343.9	0.8	418.2	3.2	68.4	2.9	212.6	6.6
Jul	14,725.0	2.1	1,906.8	0.0	1,545.0	3.7	491.8	-0.4	559.9	2.7	5,724.7	3.0	3,442.8	1.5	344.6	0.3	421.3	2.1	68.3	1.8	219.8	3.6
Aug	14,766.3	2.1	1,916.9	0.5	1,562.3	4.0	494.5	0.0	560.5	2.3	5,727.6	2.1	3,455.3	2.8	349.0	1.8	423.1	2.4	68.5	-0.6	208.8	-2.3
Sep	14,520.3	2.4	1,900.6	1.6	1,532.0	3.2	482.8	-0.1	552.9	1.4	5,650.6	3.1	3,384.0	2.4	339.0	2.0	408.0	1.3	64.7	0.0	205.8	0.6
Oct	14,526.1	3.0	1,899.1	2.9	1,516.6	2.1	478.6	0.0	551.1	1.3	5,691.5	3.9	3,373.4	2.6	337.0	3.2	408.5	1.9	62.3	-1.9	208.0	5.4
Nov	14,493.4	3.4	1,893.9	3.4	1,522.6	3.1	476.8	0.5	550.8	2.3	5,709.0	4.0	3,346.9	3.5	330.1	4.0	402.4	1.7	58.4	-0.7	202.5	4.4
Dec	14,430.3	3.2	1,869.0	3.2	1,524.9	3.4	474.2	0.4	550.0	2.1	5,689.9	3.8	3,345.5	3.1	326.2	4.9	400.0	0.8	56.7	-1.2	193.9	1.6
1999 Jan	14,206.2	3.8	1,871.0	6.0	1,509.7	2.6	461.9	-1.0	539.5	2.1	5,605.8	3.8	3,267.5	4.3	313.7	5.8	394.0	1.8	55.0	0.7	188.1	3.4
Feb	14,290.4	3.4	1,882.8	5.9	1,522.7	3.7	464.1	-0.9	541.3	1.9	5,653.2	3.7	3,267.5	2.0	313.7	5.0	392.8	0.3	56.1	3.7	196.3	8.3
Mar	14,295.8	2.9	1,876.2	3.8	1,523.3	3.9	464.5	-0.5	542.6	1.6	5,649.7	3.6	3,287.4	1.3	312.7	5.9	393.3	1.3	56.0	2.4	190.2	5.4
Apr	14,386.3	2.5	1,879.9	2.7	1,530.9	2.5	470.7	0.4	546.6	1.9	5,685.2	3.0	3,309.3	1.7	316.1	4.3	400.9	3.3	56.9	3.3	189.9	2.5
May	14,732.0	2.4	1,891.9	1.4	1,561.0	2.3	485.5	0.0	561.4	2.7	5,815.0	3.3	3,386.0	1.5	338.6	3.5	418.2	2.4	63.5	-2.2	210.9	8.3
Jun	15,020.3	2.6	1,932.8	2.1	1,595.7	3.7	498.1	1.8	573.2	4.0	5,864.4	2.7	3,482.6	2.0	352.3	2.4	432.0	3.3	68.1	-0.4	221.1	4.0
Jul	15,111.9	2.6	1,922.2	0.8	1,597.5	3.4	499.3	1.5	568.8	1.6	5,890.8	2.9	3,532.9	2.6	360.2	4.5	436.9	3.7	67.5	-1.2	235.9	7.3
Aug	15,071.4	2.1	1,937.5	1.1	1,584.5	1.4	496.2	0.3	567.2	1.2	5,902.6	3.1	3,495.6	1.2	362.0	3.7	436.3	3.1	68.2	-0.4	221.2	5.9
Sep	14,861.7	2.4	1,920.5	1.0	1,566.6	2.3	490.2	1.5	561.9	1.6	5,804.5	2.7	3,464.5	2.4	350.4	3.4	422.8	3.6	63.7	-1.5	216.7	5.3
Oct																						
Nov																						
Dec																						
Average:																						
Jan-Sep98	14,274.1		1,851.5		1,511.5		479.3		544.6		5,585.0		3,318.2		321.9		403.8		61.5		196.8	
Jan-Sep99	14,664.0		1,901.6		1,554.7		481.2		555.8		5,763.5		3,388.1		335.5		414.1		61.7		207.8	
% Change	2.7		2.7		2.9		0.4		2.1		3.2		2.1		4.2		2.6		0.3		5.6	

Monthly percent changes are calculated as month over same month previous year

Produced by: BC STATS

Source: Statistics Canada Labour Force Survey

2.4 PROVINCIAL COMPARISON - AVERAGE WEEKLY HOURS WORKED*

	Canada		BC		Alberta		Sask		Manitoba		Ontario		Quebec		NB		NS		PEI		Nfld	
	Hrs	% Chg	Hrs	% Chg	Hrs	% Chg	Hrs	% Chg	Hrs	% Chg	Hrs	% Chg	Hrs	% Chg	Hrs	% Chg	Hrs	% Chg	Hrs	% Chg	Hrs	% Chg
1989	35.1		34.8		36.3		36.1		35.0		35.3		34.4		35.1		35.3		35.1		34.7	
1990	34.6	-1.4	34.4	-1.1	36.4	0.3	35.9	-0.6	34.5	-1.4	34.7	-1.7	33.7	-2.0	34.7	-1.1	34.7	-1.7	35.7	1.7	34.8	0.3
1991	33.9	-2.0	33.5	-2.6	35.5	-2.5	35.8	-0.3	33.6	-2.6	34.1	-1.7	33.0	-2.1	34.1	-1.7	33.8	-2.6	34.6	-3.1	34.1	-2.0
1992	33.4	-1.5	33.1	-1.2	34.7	-2.3	34.8	-2.8	33.2	-1.2	33.4	-2.1	32.7	-0.9	34.0	-0.3	33.5	-0.9	33.9	-2.0	33.2	-2.6
1993	33.8	1.2	33.3	0.6	35.0	0.9	35.0	0.6	33.7	1.5	34.0	1.8	33.3	1.8	34.3	0.9	33.7	0.6	33.8	-0.3	32.8	-1.2
1994	34.3	1.5	33.3	0.0	35.7	2.0	35.6	1.7	34.1	1.2	34.4	1.2	33.9	1.8	35.0	2.0	34.1	1.2	34.8	3.0	33.2	1.2
1995	34.1	-0.6	33.2	-0.3	35.5	-0.6	35.5	-0.3	34.1	0.0	34.1	-0.9	33.6	-0.9	34.9	-0.3	33.9	-0.6	35.1	0.9	33.4	0.6
1996	34.3	0.6	33.2	0.0	35.8	0.8	35.9	1.1	34.4	0.9	34.5	1.2	33.5	-0.3	35.1	0.6	34.1	0.6	35.6	1.4	33.9	1.5
1997	34.3	0.0	33.0	-0.6	35.9	0.3	35.7	-0.6	34.6	0.6	34.6	0.3	33.4	-0.3	35.1	0.0	34.2	0.3	35.5	-0.3	34.1	0.6
1998	34.0	-0.9	32.5	-1.5	34.8	-3.1	35.0	-2.0	34.3	-0.9	34.5	-0.3	33.1	-0.9	34.9	-0.6	34.1	-0.3	34.8	-2.0	34.1	0.0
1998 Jan	34.0	-1.4	33.3	0.0	36.3	0.6	34.3	-0.9	34.6	3.3	35.0	0.3	31.0	-8.6	35.6	2.3	35.0	1.2	33.5	0.3	32.8	-1.8
Feb	34.3	-0.6	33.5	0.3	33.6	-6.4	33.6	-3.7	33.9	0.6	34.8	0.3	34.2	-0.3	34.6	-0.6	34.6	0.9	33.1	-2.4	33.2	-0.3
Mar	33.5	-0.6	31.1	-7.4	35.2	-3.3	35.0	-1.4	35.0	2.9	32.9	1.2	34.4	0.6	35.2	1.7	32.5	0.3	30.5	-8.1	33.5	-2.0
Apr	33.6	-4.3	31.8	-6.7	33.6	-8.4	35.0	-3.6	35.0	-0.8	34.8	-1.7	32.4	-6.1	34.4	-3.1	33.8	-2.9	32.4	-4.7	31.1	-11.4
May	35.6	0.0	33.4	-1.5	36.6	-1.3	39.3	0.3	36.1	-1.4	35.8	0.3	35.2	0.6	36.3	-0.3	35.9	1.4	38.6	1.8	35.9	0.6
Jun	35.5	-0.6	34.1	-0.6	36.4	-2.2	36.7	-2.7	35.6	-3.0	35.8	-0.6	34.8	0.0	36.2	-0.8	36.1	-1.6	38.5	0.5	36.5	-0.3
Jul	31.7	-0.6	31.6	-2.2	34.2	-0.9	34.3	0.0	32.6	-2.4	32.7	-0.9	27.7	1.1	34.2	0.0	33.8	0.6	35.6	-1.7	34.0	2.4
Aug	32.4	-0.3	31.2	2.0	33.9	-0.9	37.0	4.8	33.4	0.6	32.7	-1.2	30.9	-0.6	33.5	-0.6	32.1	0.0	34.6	-2.0	31.6	-3.4
Sep	35.6	-0.8	33.8	-1.5	36.5	-1.9	37.8	-1.3	36.4	-2.7	35.9	-0.8	34.8	-0.6	36.8	0.0	35.8	0.0	37.7	-3.1	35.9	0.0
Oct	32.4	-0.3	30.9	-1.0	32.9	-4.1	32.1	-6.7	32.7	-3.8	32.5	0.6	32.5	1.2	34.1	0.9	32.5	0.0	34.8	-0.6	34.5	5.2
Nov	33.9	-0.6	31.1	-0.3	33.0	-4.3	31.1	-4.9	31.5	-0.3	35.4	0.0	34.7	1.2	33.0	-1.8	31.7	-2.8	32.9	-1.8	33.3	2.1
Dec	35.3	-0.3	33.8	-0.9	35.6	-3.3	34.2	-2.8	34.6	-2.0	35.9	0.3	35.1	0.6	35.5	-2.2	35.4	-0.3	33.7	-4.0	36.8	7.3
1999 Jan	33.6	-1.2	33.0	-0.9	35.1	-3.3	33.4	-2.6	34.0	-1.7	33.1	-5.4	33.7	8.7	35.1	-1.4	33.5	-4.3	33.2	-0.9	34.5	5.2
Feb	34.2	-0.3	32.9	-1.8	32.7	-2.7	32.5	-3.3	33.8	-0.3	35.1	0.9	34.2	0.0	34.7	0.3	33.8	-2.3	33.8	2.1	34.4	3.6
Mar	33.6	0.3	31.4	1.0	35.5	0.9	34.7	-0.9	34.5	-1.4	33.1	0.6	34.6	0.6	34.6	-1.7	31.3	-3.7	32.0	4.9	34.3	2.4
Apr	35.3	5.1	33.7	6.0	35.4	5.4	35.9	2.6	35.5	1.4	35.8	2.9	35.3	9.0	35.9	4.4	35.3	4.4	33.4	3.1	36.3	16.7
May	35.8	0.6	33.9	1.5	36.2	-1.1	36.1	-8.1	35.7	-1.1	36.4	1.7	35.3	0.3	36.7	1.1	36.6	1.9	38.4	-0.5	37.1	3.3
Jun	35.8	0.8	34.0	-0.3	36.5	0.3	37.7	2.7	36.3	2.0	36.4	1.7	35.0	0.6	36.9	1.9	36.1	0.0	38.6	0.3	37.6	3.0
Jul	32.3	1.9	31.7	0.3	33.2	-2.9	32.7	-4.7	32.4	-0.6	32.8	0.3	30.9	11.6	34.1	-0.3	33.0	-2.4	35.3	-0.8	34.4	1.2
Aug	32.9	1.5	30.8	-1.3	33.3	-1.8	35.6	-3.8	33.0	-1.2	33.3	1.8	32.4	4.9	34.6	3.3	33.1	3.1	35.4	2.3	33.2	5.1
Sep	35.8	0.6	33.6	-0.6	37.1	1.6	39.7	5.0	35.9	-1.4	36.2	0.8	34.9	0.3	35.9	-2.4	36.0	0.6	37.8	0.3	36.7	2.2
Oct																						
Nov																						
Dec																						
Average:																						
Jan-Sep98	34.0		32.6		35.1		35.9		34.7		34.5		32.8		35.2		34.4		34.9		33.8	
Jan-Sep99	34.4		32.8		35.0		35.4		34.6		34.7		34.0		35.4		34.3		35.3		35.4	
% Change	1.0		0.4		-0.4		-1.5		-0.5		0.6		3.7		0.5		-0.3		1.1		4.6	

* Average Actual Hours, All Workers, Main Job / Monthly percent changes are calculated as month over same month previous year

3.1

B.C. SECTOR COMPARISON - EARNINGS AND EMPLOYMENT TRENDS

	Average Weekly Wage rate				Average Hourly Wage Rate				Employment (Actual)				Average Weekly Hours Worked*			
	Goods Industries		Service Industries		Goods Industries		Service Industries		Goods Industries		Service Industries		Goods Industries		Service Industries	
	\$	% Chg	\$	% Chg	\$	% Chg	\$	% Chg	('000)	% Chg	('000)	% Chg	Hrs	% Chg	Hrs	% Chg
1989									379.5		1,144.1		37.8		33.9	
1990									377.6	-0.5	1,183.9	3.5	37.4	-1.1	33.4	-1.5
1991									377.8	0.1	1,207.3	2.0	36.5	-2.4	32.6	-2.4
1992									369.2	-2.3	1,250.1	3.5	36.0	-1.4	32.2	-1.2
1993									378.9	2.6	1,287.0	3.0	36.8	2.2	32.3	0.3
1994									414.4	9.4	1,318.4	2.4	36.9	0.3	32.2	-0.3
1995									399.3	-3.6	1,362.3	3.3	36.3	-1.6	32.2	0.0
1996									410.7	2.9	1,395.1	2.4	36.3	0.0	32.3	0.3
1997	734.94		580.09		18.57		16.50		412.6	0.5	1,425.1	2.2	36.3	0.0	32.1	-0.6
1998	758.07	3.1	584.58	0.8	19.09	2.8	16.69	1.2	404.2	-2.0	1,456.2	2.2	36.0	-0.8	31.5	-1.9
1998																
Jan	751.24	0.9	573.49	-0.8	18.93	-0.2	16.49	-0.5	391.4	3.5	1,373.7	-2.3	35.6	0.3	32.7	0.0
Feb	752.85	0.5	577.23	0.4	19.08	-0.2	16.53	-0.4	397.4	3.6	1,380.5	-1.3	36.0	-1.6	32.7	0.3
Mar	740.96	0.3	578.96	0.9	18.71	-0.2	16.57	0.4	392.1	1.2	1,415.5	1.0	35.3	-2.2	29.9	-9.1
Apr	750.61	2.5	576.72	0.5	19.07	2.3	16.54	0.3	392.0	0.1	1,438.2	1.7	34.5	-6.8	31.1	-6.6
May	759.16	3.0	579.83	-0.7	19.03	2.4	16.61	0.1	399.2	0.4	1,466.3	1.4	37.9	2.2	32.1	-2.7
Jun	760.39	3.1	591.45	2.4	18.97	2.3	16.79	2.9	416.6	-1.8	1,476.1	1.7	38.0	0.3	33.0	-0.9
Jul	744.18	2.0	583.48	-0.5	18.68	2.2	16.56	1.2	418.7	-5.6	1,488.1	1.8	36.8	-0.5	30.2	-2.3
Aug	743.87	2.6	590.98	1.5	18.70	2.5	16.54	1.2	425.5	-3.6	1,491.4	1.7	36.1	-1.6	29.8	3.8
Sep	771.83	4.3	588.81	0.4	19.41	4.3	16.84	1.3	408.5	-5.0	1,492.1	3.6	37.5	0.3	32.8	-1.8
Oct	774.34	6.3	591.12	0.7	19.49	5.9	16.94	1.9	409.8	-5.3	1,489.3	5.4	33.8	0.9	30.2	-1.0
Nov	772.38	6.0	591.34	1.7	19.53	6.2	16.91	2.0	414.9	-2.7	1,479.0	5.3	33.5	0.9	30.4	-0.7
Dec	776.22	5.9	589.73	2.6	19.47	5.3	16.85	2.6	384.8	-7.4	1,484.2	6.4	36.5	-1.9	33.1	-0.3
1999																
Jan	791.31	5.3	587.91	2.5	19.78	4.5	16.82	2.0	369.3	-5.6	1,501.6	9.3	35.6	0.0	32.4	-0.9
Feb	778.35	3.4	589.74	2.2	19.64	2.9	16.80	1.6	366.7	-7.7	1,516.1	9.8	35.7	-0.8	32.2	-1.5
Mar	765.92	3.4	585.88	1.2	19.36	3.5	16.66	0.5	372.3	-5.0	1,503.8	6.2	36.9	4.5	30.1	0.7
Apr	760.29	1.3	585.67	1.6	19.36	1.5	16.62	0.5	363.5	-7.3	1,516.4	5.4	37.1	7.5	32.9	5.8
May	738.64	-2.7	594.26	2.5	18.84	-1.0	16.69	0.5	376.5	-5.7	1,515.4	3.3	37.0	-2.4	33.2	3.4
Jun	745.15	-2.0	597.37	1.0	18.97	0.0	16.81	0.1	404.6	-2.9	1,528.2	3.5	37.7	-0.8	33.0	0.0
Jul	763.71	2.6	594.61	1.9	19.07	2.1	16.70	0.8	403.8	-3.6	1,518.4	2.0	35.7	-3.0	30.7	1.7
Aug	758.85	2.0	601.65	1.8	18.88	1.0	16.78	1.5	421.4	-1.0	1,516.1	1.7	36.0	-0.3	29.3	-1.7
Sep	761.18	-1.4	594.58	1.0	19.07	-1.8	16.91	0.4	412.3	0.9	1,508.2	1.1	37.5	0.0	32.6	-0.6
Oct																
Nov																
Dec																
Average:																
Jan-Sep98	752.79		582.33		18.95		16.61		404.6		1,446.9		36.4		31.6	
Jan-Sep99	762.60		592.41		19.22		16.75		387.8		1,513.8		36.6		31.8	
% Change	1.3		1.7		1.4		0.9		-4.1		4.6		0.5		0.7	

* Average Actual Hours, All Workers, Main Job / Monthly percent changes are calculated as month over same month previous year

3.2A

B.C. INDUSTRIAL COMPARISON - AVERAGE WEEKLY WAGE RATE

	All Goods Producing Industries		Agriculture		Forestry Fishing & Mining		Utilities		Manufacturing		Construction	
	\$	% Chg	\$	% Chg	\$	% Chg	\$	% Chg	\$	% Chg	\$	% Chg
1989												
1990												
1991												
1992												
1993												
1994												
1995												
1996												
1997	734.94		422.17		893.92		896.11		734.38		683.67	
1998	758.07	3.1	447.89	6.1	902.78	1.0	961.95	7.3	748.83	2.0	729.15	6.7
1998 Jan	751.24	0.9	482.18	10.0	910.80	1.8	971.01	20.9	747.57	-0.4	689.57	-1.3
Feb	752.85	0.5	425.25	-16.2	865.72	-4.1	936.55	11.6	754.00	1.2	725.79	2.7
Mar	740.96	0.3	437.14	5.7	857.45	-4.5	936.29	10.5	734.38	-0.4	718.57	3.4
Apr	750.61	2.5	466.29	9.1	894.91	1.2	874.88	-4.5	756.92	2.0	710.81	8.0
May	759.16	3.0	483.47	17.5	880.69	1.1	965.01	2.3	748.03	0.1	764.02	13.9
Jun	760.39	3.1	463.45	29.3	880.00	-0.4	933.58	-2.1	762.45	3.2	726.74	3.5
Jul	744.18	2.0	411.95	-0.3	901.48	-1.3	904.07	-1.0	738.51	1.7	721.42	5.0
Aug	743.87	2.6	443.30	9.4	887.71	-3.6	962.72	10.7	728.34	1.1	725.67	8.1
Sep	771.83	4.3	409.08	-0.5	903.75	0.3	971.52	6.7	760.15	3.3	756.45	10.9
Oct	774.34	6.3	402.64	-11.7	933.18	5.7	1026.37	12.5	757.45	3.8	745.76	14.2
Nov	772.38	6.0	479.50	13.3	947.78	10.2	997.42	13.8	750.27	4.1	731.03	3.5
Dec	776.22	5.9	469.85	6.3	974.41	7.0	1063.62	14.2	748.73	3.4	731.68	8.1
1999 Jan	791.31	5.3	548.80	13.8	984.87	8.1	1069.61	10.2	766.57	2.5	745.79	8.2
Feb	778.35	3.4	495.88	16.6	981.88	13.4	1010.85	7.9	765.12	1.5	707.89	-2.5
Mar	765.92	3.4	541.07	23.8	962.12	12.2	921.66	-1.6	766.09	4.3	684.41	-4.8
Apr	760.29	1.3	552.94	18.6	975.72	9.0	903.49	3.3	760.66	0.5	673.06	-5.3
May	738.64	-2.7	512.71	6.0	916.53	4.1	906.08	-6.1	757.72	1.3	634.41	-17.0
Jun	745.15	-2.0	470.71	1.6	902.02	2.5	860.28	-7.9	754.14	-1.1	689.06	-5.2
Jul	763.71	2.6	496.21	20.5	936.05	3.8	832.42	-7.9	768.12	4.0	701.28	-2.8
Aug	758.85	2.0	543.80	22.7	889.41	0.2	911.33	-5.3	761.75	4.6	706.23	-2.7
Sep	761.18	-1.4	548.00	34.0	935.67	3.5	941.01	-3.1	755.27	-0.6	704.58	-6.9
Oct												
Nov												
Dec												
Average:												
Jan-Sep98	752.79		446.90		886.95		939.51		747.82		726.56	
Jan-Sep99	762.60		523.35		942.70		928.53		761.72		694.08	
% Change	1.3		17.1		6.3		-1.2		1.9		-4.5	

Monthly percent changes are calculated as month over same month previous year

Produced by: BC STATS

Source: Statistics Canada Labour Force Survey

3.2B

B.C. INDUSTRIAL COMPARISON - AVERAGE WEEKLY WAGE RATE

	All Service Producing Industries		Transport. and Warehousing		Retail and Wholesale Trade		Finance & Related		Selected Breakout of Community & Personal Service								Public Administration		Total All Industries	
									Profess., Scient. & Tech Services		Education		Health and Social Services		Accommod., Food & Bev.					
	\$	% Chg	\$	% Chg	\$	% Chg	\$	% Chg	\$	% Chg	\$	% Chg	\$	% Chg	\$	% Chg	\$	% Chg		
1989																				
1990																				
1991																				
1992																				
1993																				
1994																				
1995																				
1996																				
1997	580.09		703.46		490.05		590.37		735.69		742.52		605.03		318.04		785.72		613.65	
1998	584.58	0.8	722.62	2.7	483.93	-1.2	630.08	6.7	750.88	2.1	727.56	-2.0	617.36	2.0	328.72	3.4	767.53	-2.3	622.21	1.4
1998																				
Jan	573.49	-0.8	675.44	-2.3	475.36	-2.0	655.01	12.4	720.05	-3.8	686.12	-3.7	603.55	-1.7	321.23	21.4	769.27	-1.6	612.51	0.2
Feb	577.23	0.4	703.03	1.3	487.09	1.3	655.26	14.2	749.39	-2.1	710.12	1.1	602.98	-0.3	330.77	25.3	762.68	-2.7	616.62	1.0
Mar	578.96	0.9	702.38	2.1	471.69	-5.0	635.67	11.1	731.76	4.0	720.08	2.5	625.39	5.0	312.10	17.5	769.38	-3.1	613.65	0.9
Apr	576.72	0.5	716.65	3.4	478.26	-2.6	629.87	8.5	726.18	2.1	704.77	-3.0	617.46	4.1	304.46	16.6	782.75	-0.1	614.14	1.2
May	579.83	-0.7	719.84	-0.5	462.39	-9.7	638.77	16.1	739.92	-0.7	714.21	-5.7	615.13	3.1	336.87	22.6	779.90	0.9	618.87	0.5
Jun	591.45	2.4	733.44	3.6	488.13	-3.2	635.92	12.7	760.68	2.0	733.70	-5.0	632.27	7.0	348.81	27.8	752.83	-3.6	628.70	2.7
Jul	583.48	-0.5	714.06	0.3	484.91	-1.9	621.10	9.2	777.57	7.1	758.93	-7.4	608.15	-1.2	344.54	30.6	744.75	-6.1	619.11	0.1
Aug	590.98	1.5	724.38	0.9	486.19	-0.9	608.34	6.3	804.68	13.6	785.91	-4.0	613.49	-0.3	357.96	32.2	750.94	-4.5	625.15	1.8
Sep	588.81	0.4	723.13	2.2	498.03	2.0	626.74	3.6	771.03	3.5	740.36	-1.6	614.20	-2.0	343.35	26.8	756.02	-5.0	628.33	1.2
Oct	591.12	0.7	736.75	2.4	495.43	1.5	626.30	1.2	743.69	-1.7	726.20	-0.4	616.18	0.6	316.67	19.5	771.63	-1.4	630.13	1.8
Nov	591.34	1.7	753.57	8.7	492.28	2.1	609.19	-5.3	750.13	2.6	731.54	2.2	628.69	5.1	310.67	18.9	780.56	-0.7	630.29	2.6
Dec	589.73	2.6	756.63	9.2	485.31	3.8	617.02	-4.6	725.54	-2.5	733.90	3.0	628.28	5.3	314.99	20.5	796.26	0.9	627.46	2.7
1999																				
Jan	587.91	2.5	762.59	12.9	501.65	5.5	611.21	-6.7	723.31	0.5	757.36	10.4	614.12	1.8	314.51	-2.1	793.01	3.1	627.19	2.4
Feb	589.74	2.2	766.62	9.0	515.50	5.8	600.42	-8.4	729.37	-2.7	732.91	3.2	619.40	2.7	310.47	-6.1	788.35	3.4	626.43	1.6
Mar	585.88	1.2	758.91	8.0	506.53	7.4	618.27	-2.7	735.06	0.5	733.25	1.8	622.57	-0.5	315.35	1.0	786.92	2.3	620.75	1.2
Apr	585.67	1.6	744.49	3.9	511.53	7.0	607.21	-3.6	774.66	6.7	729.90	3.6	629.65	2.0	320.50	5.3	778.05	-0.6	618.67	0.7
May	594.26	2.5	724.92	0.7	513.60	11.1	650.96	1.9	791.41	7.0	741.74	3.9	617.29	0.4	336.27	-0.2	789.26	1.2	622.51	0.6
Jun	597.37	1.0	718.57	-2.0	519.95	6.5	631.29	-0.7	823.83	8.3	745.33	1.6	617.54	-2.3	321.11	-7.9	804.91	6.9	628.27	-0.1
Jul	594.61	1.9	724.29	1.4	513.43	5.9	624.79	0.6	812.58	4.5	758.27	-0.1	627.53	3.2	315.02	-8.6	777.12	4.3	630.09	1.8
Aug	601.65	1.8	732.67	1.1	510.06	4.9	652.94	7.3	794.37	-1.3	770.53	-2.0	623.77	1.7	333.33	-6.9	791.74	5.4	634.81	1.5
Sep	594.58	1.0	718.82	-0.6	497.61	-0.1	639.09	2.0	813.02	5.4	733.41	-0.9	621.28	1.2	310.56	-9.6	804.07	6.4	629.51	0.2
Oct																				
Nov																				
Dec																				
Average:																				
Jan-Sep98	582.33		712.48		481.34		634.08		753.47		728.24		614.74		333.34		763.17		619.68	
Jan-Sep99	592.41		739.10		509.98		626.24		777.51		744.74		621.46		319.68		790.38		626.47	
% Change	1.7		3.7		6.0		-1.2		3.2		2.3		1.1		-4.1		3.6		1.1	

Monthly Percent Changes are calculated as month over same month previous year

Produced by: BC STATS

Source: Statistics Canada Labour Force Survey

3.3A

B.C. INDUSTRIAL COMPARISON - AVERAGE HOURLY WAGE RATE

	All Goods Producing Industries		Agriculture		Forestry Fishing & Mining		Utilities		Manufacturing		Construction	
	\$	% Chg	\$	% Chg	\$	% Chg	\$	% Chg	\$	% Chg	\$	% Chg
1989												
1990												
1991												
1992												
1993												
1994												
1995												
1996												
1997	18.57		11.51		21.44		23.66		18.48		17.80	
1998	19.09	2.8	12.02	4.4	21.26	-0.8	25.10	6.1	18.95	2.5	18.64	4.7
1998 Jan	18.93	-0.2	14.32	25.0	20.98	-3.4	25.20	14.9	18.84	-1.1	17.94	-1.8
Feb	19.08	-0.2	13.15	-1.9	20.67	-4.7	24.23	6.6	19.10	0.9	18.58	-0.5
Mar	18.71	-0.2	12.17	5.5	20.21	-6.0	24.51	12.2	18.64	-0.8	18.37	2.2
Apr	19.07	2.3	12.50	7.5	20.75	-4.3	23.32	-1.7	19.38	3.4	18.46	6.6
May	19.03	2.4	12.18	9.7	20.36	-2.4	25.12	3.9	19.01	1.7	19.20	8.8
Jun	18.97	2.3	11.76	19.8	20.89	-1.3	24.22	-3.9	19.14	3.5	18.27	0.9
Jul	18.68	2.2	10.55	-4.4	21.21	-0.9	23.50	-4.2	18.70	2.1	18.34	5.2
Aug	18.70	2.5	10.98	-3.1	20.94	-3.4	25.07	8.1	18.56	2.9	18.31	4.4
Sep	19.41	4.3	11.08	4.7	21.53	-1.9	25.87	7.0	19.17	4.4	19.12	7.7
Oct	19.49	5.9	11.22	-10.3	22.10	4.2	26.80	9.4	19.10	4.1	19.04	11.6
Nov	19.53	6.2	12.22	1.1	22.64	6.9	25.91	13.3	18.94	5.3	19.11	4.8
Dec	19.47	5.3	12.73	-0.2	22.85	7.1	27.34	12.4	18.85	3.5	18.86	6.6
1999 Jan	19.78	4.5	13.99	-2.3	22.62	7.8	28.14	11.7	19.23	2.1	19.26	7.4
Feb	19.64	2.9	13.43	2.1	22.75	10.1	26.40	9.0	19.35	1.3	18.66	0.4
Mar	19.36	3.5	14.50	19.1	22.25	10.1	24.14	-1.5	19.39	4.0	18.04	-1.8
Apr	19.36	1.5	14.31	14.5	22.96	10.7	23.55	1.0	19.37	-0.1	18.05	-2.2
May	18.84	-1.0	13.63	11.9	21.41	5.2	23.73	-5.5	19.17	0.8	17.37	-9.5
Jun	18.97	0.0	14.61	24.2	21.30	2.0	22.80	-5.9	19.08	-0.3	17.87	-2.2
Jul	19.07	2.1	11.97	13.5	21.63	2.0	22.55	-4.0	19.37	3.6	17.71	-3.4
Aug	18.88	1.0	13.50	23.0	20.27	-3.2	23.77	-5.2	19.15	3.2	17.84	-2.6
Sep	19.07	-1.8	13.78	24.4	21.65	0.6	24.55	-5.1	19.09	-0.4	18.14	-5.1
Oct												
Nov												
Dec												
Average:												
Jan-Sep98	18.95		12.08		20.84		24.56		18.95		18.51	
Jan-Sep99	19.22		13.75		21.87		24.40		19.24		18.10	
% Change	1.4		13.8		5.0		-0.6		1.6		-2.2	

Monthly percent changes are calculated as month over same month previous year

Produced by: BC STATS

Source: Statistics Canada Labour Force Survey

3.3B

B.C. INDUSTRIAL COMPARISON - AVERAGE HOURLY WAGE RATE

	All Service Producing Industries	Transport. and Warehousing		Retail and Wholesale Trade		Finance & Related		Selected Breakout of Community & Personal Service								Public Administration		Total All Industries		
								Profess., Scient. & Tech Services		Education		Health and Social Services		Accommod., Food & Bev.						
								\$	% Chg	\$	% Chg	\$	% Chg	\$	% Chg					\$
1989																				
1990																				
1991																				
1992																				
1993																				
1994																				
1995																				
1996																				
1997	16.50		18.26		13.58		16.15		19.17		22.56		18.54		10.14		21.17		16.95	
1998	16.69	1.2	18.72	2.5	13.62	0.3	17.25	6.8	19.65	2.5	22.28	-1.2	18.86	1.7	10.42	2.8	20.96	-1.0	17.21	1.5
1998																				
Jan	16.49	-0.5	18.02	-1.4	13.57	1.0	17.70	11.0	19.56	-0.7	21.34	-3.3	18.40	-2.4	10.27	-1.6	20.78	-1.7	17.03	-0.1
Feb	16.53	-0.4	18.04	-0.7	13.72	1.2	17.58	12.6	19.63	-1.4	21.79	-1.0	18.61	0.1	10.56	2.2	20.88	-1.2	17.10	-0.1
Mar	16.57	0.4	18.13	-1.3	13.37	-2.1	17.35	10.4	19.06	3.4	21.74	-2.1	19.10	4.1	10.26	2.5	20.93	-2.9	17.03	0.4
Apr	16.54	0.3	18.69	2.3	13.45	-1.4	17.26	7.9	19.06	2.6	21.84	-2.5	18.87	2.9	10.13	0.8	21.16	-0.4	17.09	0.9
May	16.61	0.1	18.83	-0.1	13.13	-6.0	17.85	15.1	19.25	1.6	21.95	-2.7	18.99	3.6	10.60	6.4	21.21	2.2	17.13	0.7
Jun	16.79	2.9	19.00	3.7	13.62	-0.4	17.52	13.8	19.53	1.9	22.57	-1.4	19.12	5.4	10.72	7.1	20.66	-2.1	17.28	2.9
Jul	16.56	1.2	18.60	1.4	13.57	0.4	17.12	10.2	19.98	7.7	22.69	-2.5	18.77	0.7	10.42	6.4	20.47	-4.1	17.03	1.4
Aug	16.54	1.2	18.71	1.0	13.57	0.9	16.85	6.5	20.77	11.7	22.38	-5.2	18.63	-0.1	10.49	4.7	20.38	-3.5	17.02	1.5
Sep	16.84	1.3	18.82	2.3	13.93	3.0	17.10	2.8	20.51	5.0	22.84	0.7	18.76	-1.5	10.42	3.4	21.08	-0.6	17.40	2.0
Oct	16.94	1.9	18.88	3.3	14.00	1.7	17.06	1.3	19.47	-1.4	22.85	1.6	18.98	2.5	10.30	-1.1	21.11	0.1	17.49	2.7
Nov	16.91	2.0	19.26	10.4	13.86	2.1	16.59	-3.9	19.72	1.4	22.71	1.1	19.11	3.4	10.38	0.0	21.22	0.3	17.48	2.9
Dec	16.85	2.6	19.39	8.9	13.62	3.0	16.98	-2.3	18.99	-2.1	22.63	1.3	18.98	2.5	10.42	1.1	21.82	2.8	17.38	2.8
1999																				
Jan	16.82	2.0	19.52	8.3	14.00	3.2	16.59	-6.3	19.16	-2.0	22.87	7.2	18.80	2.2	10.41	1.4	21.72	4.5	17.39	2.1
Feb	16.80	1.6	19.73	9.4	14.23	3.7	16.42	-6.6	19.23	-2.0	22.01	1.0	18.99	2.0	10.23	-3.1	21.87	4.7	17.36	1.5
Mar	16.66	0.5	19.46	7.3	14.05	5.1	16.78	-3.3	19.39	1.7	21.96	1.0	19.21	0.6	10.27	0.1	21.24	1.5	17.19	0.9
Apr	16.62	0.5	19.61	4.9	14.08	4.7	16.80	-2.7	20.16	5.8	21.51	-1.5	19.09	1.2	10.35	2.2	21.12	-0.2	17.14	0.3
May	16.69	0.5	18.95	0.6	14.15	7.8	17.55	-1.7	20.76	7.8	21.43	-2.4	18.64	-1.8	10.53	-0.7	21.54	1.6	17.11	-0.1
Jun	16.81	0.1	18.86	-0.7	14.42	5.9	16.82	-4.0	21.62	10.7	21.56	-4.5	18.69	-2.2	10.23	-4.6	21.93	6.1	17.26	-0.1
Jul	16.70	0.8	18.62	0.1	14.29	5.3	17.21	0.5	21.25	6.4	21.82	-3.8	18.90	0.7	10.10	-3.1	21.18	3.5	17.20	1.0
Aug	16.78	1.5	18.62	-0.5	14.15	4.3	17.64	4.7	21.07	1.4	21.79	-2.6	18.89	1.4	10.43	-0.6	21.24	4.2	17.22	1.2
Sep	16.91	0.4	18.72	-0.5	14.10	1.2	17.52	2.5	21.48	4.7	22.23	-2.7	18.79	0.2	10.13	-2.8	21.82	3.5	17.36	-0.2
Oct																				
Nov																				
Dec																				
Average:																				
Jan-Sep98	16.61		18.54		13.55		17.37		19.71		22.13		18.81		10.43		20.84		17.12	
Jan-Sep99	16.75		19.12		14.16		17.04		20.46		21.91		18.89		10.30		21.52		17.25	
% Change	0.9		3.1		4.5		-1.9		3.8		-1.0		0.4		-1.3		3.3		0.7	

Monthly Percent Changes are calculated as month over same month previous year

Produced by: BC STATS

Source: Statistics Canada Labour Force Survey

3.4A

B.C. INDUSTRIAL COMPARISON - EMPLOYMENT (Actual)

	All Goods Prod. Industries (incl. Utilities)		Agriculture		Forestry		Fishing and Trapping		Mining		Total Manufacturing		Selected Breakout of Manufacturing						Construction	
													Food and Beverage		Wood		Paper and Allied			
	('000)	% Chg	('000)	% Chg	('000)	% Chg	('000)	% Chg	('000)	% Chg	('000)	% Chg	('000)	% Chg	('000)	% Chg	('000)	% Chg		
1989	379.5		27.9		29.2		7.6		21.5		180.5		21.9		48.2		25.1		103.9	
1990	377.6	-0.5	26.2	-6.1	25.9	-11.3	7.0	-7.9	18.1	-15.8	178.5	-1.1	21.1	-3.7	47.6	-1.2	20.0	-20.3	112.7	8.5
1991	377.8	0.1	32.0	22.1	27.7	6.9	7.1	1.4	17.3	-4.4	174.7	-2.1	22.1	4.7	43.2	-9.2	21.5	7.5	109.8	-2.6
1992	369.2	-2.3	29.3	-8.4	26.1	-5.8	5.0	-29.6	15.6	-9.8	168.3	-3.7	21.1	-4.5	45.8	6.0	20.5	-4.7	114.5	4.3
1993	378.9	2.6	31.8	8.5	27.1	3.8	6.8	36.0	12.8	-17.9	179.0	6.4	21.2	0.5	48.9	6.8	21.2	3.4	110.8	-3.2
1994	414.4	9.4	26.7	-16.0	33.0	21.8	7.0	2.9	13.1	2.3	186.8	4.4	27.3	28.8	49.7	1.6	21.2	0.0	137.1	23.7
1995	399.3	-3.6	26.2	-1.9	38.0	15.2	4.7	-32.9	15.0	14.5	183.6	-1.7	21.4	-21.6	42.2	-15.1	23.1	9.0	121.2	-11.6
1996	410.7	2.9	30.4	16.0	31.3	-17.6	5.2	10.6	17.0	13.3	195.6	6.5	24.2	13.1	43.1	2.1	22.7	-1.7	121.5	0.2
1997	412.6	0.5	29.1	-4.3	33.8	8.0	5.9	13.5	17.1	0.6	190.1	-2.8	24.4	0.8	43.3	0.5	22.1	-2.6	126.3	4.0
1998	404.2	-2.0	27.3	-6.2	29.4	-13.0	3.5	-40.7	17.2	0.6	193.6	1.8	25.4	4.1	42.9	-0.9	22.4	1.4	120.5	-4.6
1998																				
Jan	391.4	3.5	26.4	3.1	32.4	17.8	3.1	-27.9	16.7	11.3	187.0	6.4	27.3	24.1	41.0	-4.2	25.3	31.1	114.9	-5.8
Feb	397.4	3.6	25.1	-5.3	32.7	2.5	2.2	-51.1	16.1	15.0	190.4	8.2	25.5	5.4	37.7	-8.7	22.9	31.6	119.3	-2.8
Mar	392.1	1.2	24.7	-2.0	31.2	-1.0	3.9	-36.1	16.4	8.6	185.0	4.4	26.3	15.4	37.2	-22.0	22.3	26.7	119.3	-2.9
Apr	392.0	0.1	29.5	17.1	27.5	-11.3	4.1	7.9	18.0	37.4	181.1	0.2	24.1	19.3	37.8	-18.9	20.9	14.2	119.6	-6.1
May	399.2	0.4	30.1	13.2	26.0	-18.5	4.6	-29.2	16.1	1.9	191.2	4.9	22.4	9.8	44.5	-4.5	21.3	2.4	118.4	-4.5
Jun	416.6	-1.8	29.6	-7.2	29.9	-13.3	3.2	-65.2	18.7	-5.6	198.5	2.4	24.9	9.7	46.1	-0.2	19.9	-7.4	123.0	-2.1
Jul	418.7	-5.6	30.1	-21.6	31.2	-12.8	4.5	-53.6	17.5	-9.8	200.6	1.7	25.4	-3.4	45.7	3.6	22.4	-6.3	120.3	-10.2
Aug	425.5	-3.6	31.0	-8.0	28.7	-18.9	4.9	-45.6	19.1	0.0	205.0	3.2	29.0	3.9	44.8	0.0	21.9	-8.8	123.0	-8.0
Sep	408.5	-5.0	30.5	-1.3	28.6	-25.1	3.6	-47.8	17.0	-22.0	198.9	0.6	24.6	-2.4	46.3	18.1	23.0	-4.2	114.7	-6.9
Oct	409.8	-5.3	27.2	-3.2	27.9	-21.6	3.8	-34.5	15.5	-17.6	193.9	-5.0	24.7	2.9	43.9	8.4	22.1	-16.0	127.0	-0.5
Nov	414.9	-2.7	21.7	-29.1	29.0	-22.7	1.9	-34.5	18.0	0.6	200.3	1.0	27.0	0.0	44.8	17.3	22.7	-14.0	131.5	2.7
Dec	384.8	-7.4	21.3	-21.4	28.1	-20.2	1.9	-20.8	16.7	5.7	190.8	-4.2	23.6	-22.6	44.6	7.5	23.7	-7.4	115.0	-7.9
1999																				
Jan	369.3	-5.6	22.8	-13.6	23.0	-29.0	2.9	-6.5	17.4	4.2	178.0	-4.8	21.5	-21.2	41.0	0.0	22.7	-10.3	114.2	-0.6
Feb	366.7	-7.7	21.1	-15.9	24.7	-24.5	2.1	-4.5	19.3	19.9	179.7	-5.6	22.3	-12.5	42.4	12.5	23.8	3.9	110.5	-7.4
Mar	372.3	-5.0	24.6	-0.4	23.3	-25.3	4.0	2.6	16.9	3.0	183.4	-0.9	20.4	-22.4	36.8	-1.1	26.1	17.0	110.3	-7.5
Apr	363.5	-7.3	28.6	-3.1	21.1	-23.3	1.7	-58.5	15.9	-11.7	185.2	2.3	20.8	-13.7	42.6	12.7	24.9	19.1	100.9	-15.6
May	376.5	-5.7	30.1	0.0	25.4	-2.3	1.8	-60.9	14.5	-9.9	185.1	-3.2	19.9	-11.2	42.2	-5.2	23.4	9.9	110.4	-6.8
Jun	404.6	-2.9	31.7	7.1	26.7	-10.7	3.7	15.6	12.8	-31.6	200.7	1.1	22.4	-10.0	43.7	-5.2	24.1	21.1	115.7	-5.9
Jul	403.8	-3.6	30.4	1.0	30.3	-2.9	5.0	11.1	11.7	-33.1	205.0	2.2	24.0	-5.5	46.5	1.8	22.4	0.0	107.6	-10.6
Aug	421.4	-1.0	37.4	20.6	32.0	11.5	6.8	38.8	10.2	-46.6	201.6	-1.7	22.5	-22.4	42.2	-5.8	20.6	-5.9	119.3	-3.0
Sep	412.3	0.9	37.0	21.3	34.6	21.0	5.5	52.8	11.9	-30.0	193.3	-2.8	20.8	-15.4	44.9	-3.0	21.7	-5.7	119.0	3.7
Oct																				
Nov																				
Dec																				
Average:																				
Jan-Sep98	404.6		28.6		29.8		3.8		17.3		193.1		25.5		42.3		22.2		119.2	
Jan-Sep99	387.8		29.3		26.8		3.7		14.5		190.2		21.6		42.5		23.3		112.0	
% Change	-4.1		2.6		-10.1		-1.8		-16.1		-1.5		-15.2		0.3		4.9		-6.0	

Monthly percent changes are calculated as month over same month previous year

Produced by: BC STATS

Source: Statistics Canada Labour Force Survey

3.4B

B.C. INDUSTRIAL COMPARISON - EMPLOYMENT (Actual)

	All Service Producing Industries		Transport and Warehousing		Retail and Wholesale Trade		Finance & Related		Total Comm., & Personal Service		Selected Breakout of Comm. & Pers. Service						Public Administration		Total All Industries	
	('000)	% Chg	('000)	% Chg	('000)	% Chg	('000)	% Chg	('000)	% Chg	Education		Health and Social Services		Accommod. Food & Bev.		('000)	% Chg	('000)	% Chg
											('000)	% Chg	('000)	% Chg	('000)	% Chg				
1989	1,144.1		91.8		261.4		101.5		603.5		91.1		135.6		121.3		86.0		1,523.7	
1990	1,183.9	3.5	99.0	7.8	269.3	3.0	100.4	-1.1	629.7	4.3	93.3	2.4	142.9	5.4	116.8	-3.7	85.3	-0.8	1,561.4	2.5
1991	1,207.3	2.0	98.1	-0.9	260.4	-3.3	100.5	0.1	661.4	5.0	106.8	14.5	153.0	7.1	119.1	2.0	87.0	2.0	1,585.1	1.5
1992	1,250.1	3.5	98.7	0.6	273.4	5.0	116.3	15.7	669.7	1.3	105.3	-1.4	155.3	1.5	125.7	5.5	92.1	5.9	1,619.3	2.2
1993	1,287.0	3.0	97.2	-1.5	280.1	2.5	107.2	-7.8	701.9	4.8	114.6	8.8	159.0	2.4	120.7	-4.0	100.6	9.2	1,665.9	2.9
1994	1,318.4	2.4	98.1	0.9	275.4	-1.7	116.2	8.4	731.8	4.3	118.0	3.0	167.9	5.6	135.7	12.4	97.0	-3.6	1,732.8	4.0
1995	1,362.3	3.3	101.2	3.2	285.1	3.5	116.8	0.5	761.7	4.1	119.4	1.2	170.1	1.3	136.0	0.2	97.5	0.5	1,761.6	1.7
1996	1,395.1	2.4	102.5	1.3	280.8	-1.5	119.0	1.9	785.8	3.2	122.3	2.4	175.7	3.3	136.4	0.3	107.0	9.7	1,805.8	2.5
1997	1,425.1	2.2	107.3	4.7	289.4	3.1	113.5	-4.6	826.0	5.1	126.5	3.4	190.9	8.7	147.5	8.1	88.9	-16.9	1,837.7	1.8
1998	1,456.2	2.2	102.4	-4.6	299.1	3.4	111.4	-1.9	850.8	3.0	121.2	-4.2	200.3	4.9	147.9	0.3	92.6	4.2	1,860.4	1.2
1998 Jan	1,373.7	-2.3	95.9	-14.4	268.0	-8.6	114.3	-5.4	808.1	3.5	119.0	-11.7	188.4	1.7	146.8	12.4	87.4	-12.2	1,765.2	-1.1
Feb	1,380.5	-1.3	90.5	-19.6	278.0	-5.2	114.4	0.6	811.4	3.7	123.8	-11.4	185.7	1.1	143.2	8.9	86.3	-9.8	1,777.9	-0.2
Mar	1,415.5	1.0	95.9	-13.1	286.2	-0.1	111.5	-2.7	830.1	4.0	125.9	-6.3	194.2	4.0	141.3	0.4	91.9	-0.1	1,807.6	1.0
Apr	1,438.2	1.7	96.9	-10.1	295.4	1.7	113.6	-0.8	839.8	3.2	123.5	-10.0	197.4	3.3	136.3	-5.5	92.4	4.9	1,830.2	1.3
May	1,466.3	1.4	99.3	-11.3	302.3	5.3	107.5	-0.9	859.5	1.1	120.8	-14.1	194.5	-1.6	146.6	-1.9	97.7	10.6	1,865.5	1.2
Jun	1,476.1	1.7	97.1	-14.7	301.8	5.5	111.3	5.8	868.4	1.2	124.6	-1.8	198.2	2.0	147.5	-12.1	97.3	11.1	1,892.7	0.9
Jul	1,488.1	1.8	103.8	-2.1	300.2	2.2	112.4	-1.1	874.0	1.8	106.1	-9.1	210.0	7.5	158.4	-3.4	97.8	8.8	1,906.8	0.0
Aug	1,491.4	1.7	103.8	-4.2	309.3	5.1	109.1	-5.5	866.1	0.7	99.4	-12.0	207.2	0.8	155.3	-2.1	103.3	16.9	1,916.9	0.5
Sep	1,492.1	3.6	109.7	0.5	313.9	8.1	99.9	-12.8	872.8	3.5	116.9	-7.4	204.5	8.5	151.6	1.5	95.8	15.1	1,900.6	1.6
Oct	1,489.3	5.4	113.5	14.8	304.0	4.9	117.4	4.4	865.4	4.9	131.9	12.4	206.3	13.9	149.2	2.5	89.0	2.5	1,899.1	2.9
Nov	1,479.0	5.3	107.6	7.2	316.1	10.8	109.3	-3.0	859.5	4.6	131.0	14.1	208.8	9.3	144.9	3.9	86.4	1.6	1,893.9	3.4
Dec	1,484.2	6.4	114.7	18.6	314.0	11.2	116.2	0.4	854.1	4.3	131.4	12.8	208.1	9.3	153.2	3.1	85.3	4.4	1,869.0	3.2
1999 Jan	1,501.6	9.3	107.8	12.4	313.4	16.9	119.6	4.6	867.4	7.3	133.0	11.8	193.0	2.4	152.3	3.7	93.5	7.0	1,871.0	6.0
Feb	1,516.1	9.8	115.2	27.3	308.4	10.9	118.1	3.2	881.8	8.7	128.3	3.6	204.8	10.3	156.8	9.5	92.6	7.3	1,882.8	5.9
Mar	1,503.8	6.2	106.7	11.3	325.1	13.6	119.5	7.2	865.6	4.3	125.7	-0.2	204.2	5.1	157.3	11.3	87.0	-5.3	1,876.2	3.8
Apr	1,516.4	5.4	103.5	6.8	324.9	10.0	110.4	-2.8	882.8	5.1	127.2	3.0	202.2	2.4	163.0	19.6	94.9	2.7	1,879.9	2.7
May	1,515.4	3.3	110.6	11.4	318.4	5.3	126.4	17.6	868.8	1.1	125.9	4.2	206.4	6.1	153.3	4.6	91.2	-6.7	1,891.9	1.4
Jun	1,528.2	3.5	120.8	24.4	319.9	6.0	116.4	4.6	886.3	2.1	127.4	2.2	211.3	6.6	152.5	3.4	84.8	-12.8	1,932.8	2.1
Jul	1,518.4	2.0	128.0	23.3	321.6	7.1	112.9	0.4	870.7	-0.4	109.8	3.5	202.7	-3.5	154.4	-2.5	85.3	-12.8	1,922.2	0.8
Aug	1,516.1	1.7	128.8	24.1	312.5	1.0	121.1	11.0	864.5	-0.2	114.5	15.2	192.5	-7.1	161.5	4.0	89.0	-13.8	1,937.5	1.1
Sep	1,508.2	1.1	127.9	16.6	294.6	-6.1	123.9	24.0	876.8	0.5	135.5	15.9	182.3	-10.9	167.2	10.3	84.9	-11.4	1,920.5	1.0
Oct																				
Nov																				
Dec																				
Average:																				
Jan-Sep98	1,446.9		99.2		295.0		110.4		847.8		117.8		197.8		147.4		94.4		1,851.5	
Jan-Sep99	1,513.8		116.6		315.4		118.7		873.9		125.3		199.9		157.6		89.2		1,901.6	
% Change	4.6		17.5		6.9		7.5		3.1		6.3		1.1		6.9		-5.5		2.7	

Monthly percent changes are calculated as month over same month previous year

Produced by: BC STATS

Source: Statistics Canada Labour Force Survey

3.5A

B.C. INDUSTRIAL COMPARISON - AVERAGE WEEKLY HOURS WORKED*

	All Goods Producing Industries		Agriculture		Forestry, Fishing & Mining		Utilities		Manufacturing		Construction	
	Hrs	% Chg	Hrs	% Chg	Hrs	% Chg	Hrs	% Chg	Hrs	% Chg	Hrs	% Chg
1989	37.8		40.4		38.9		36.6		37.1		37.7	
1990	37.4	-1.1	39.9	-1.2	38.6	-0.8	35.8	-2.2	36.7	-1.1	37.4	-0.8
1991	36.5	-2.4	40.1	0.5	38.7	0.3	35.0	-2.2	35.9	-2.2	35.5	-5.1
1992	36.0	-1.4	42.6	6.2	37.6	-2.8	33.3	-4.9	35.3	-1.7	34.9	-1.7
1993	36.8	2.2	39.5	-7.3	38.5	2.4	35.3	6.0	36.5	3.4	36.0	3.2
1994	36.9	0.3	37.4	-5.3	38.8	0.8	35.6	0.8	37.0	1.4	35.9	-0.3
1995	36.3	-1.6	37.3	-0.3	38.9	0.3	33.9	-4.8	36.7	-0.8	34.6	-3.6
1996	36.3	0.0	38.9	4.3	37.6	-3.3	32.8	-3.2	36.5	-0.5	35.1	1.4
1997	36.3	0.0	36.9	-5.1	38.3	1.9	35.8	9.1	36.2	-0.8	35.3	0.6
1998	36.0	-0.8	38.2	3.5	38.9	1.6	34.1	-4.7	35.8	-1.1	34.7	-1.7
1998 Jan	35.6	0.3	32.6	0.6	39.8	5.3	39.5	2.1	36.3	-2.2	32.7	-0.3
Feb	36.0	-1.6	30.8	-12.3	40.0	7.2	38.1	4.7	36.5	-2.9	34.3	-2.3
Mar	35.3	-2.2	34.9	1.7	36.6	-4.4	32.6	-14.2	35.7	-3.8	34.6	1.5
Apr	34.5	-6.8	38.8	2.6	37.9	5.6	30.4	-20.0	34.5	-7.8	32.4	-11.5
May	37.9	2.2	41.5	7.8	39.6	3.7	37.0	-3.6	38.0	2.2	36.4	1.1
Jun	38.0	0.3	42.7	7.3	37.1	-5.6	34.2	-5.8	38.3	2.4	37.0	-2.1
Jul	36.8	-0.5	39.0	-6.7	41.4	-0.5	31.7	0.3	35.5	0.9	36.9	1.1
Aug	36.1	-1.6	42.2	9.9	39.5	-4.1	32.7	-1.5	34.6	-2.8	36.1	0.0
Sep	37.5	0.3	39.3	7.1	39.2	-1.0	31.9	-16.5	36.9	-2.6	37.8	6.5
Oct	33.8	0.9	37.5	3.3	36.9	3.1	34.5	5.2	33.1	0.0	32.8	1.2
Nov	33.5	0.9	39.6	20.0	36.8	4.8	31.7	0.3	33.1	1.5	32.2	-3.6
Dec	36.5	-1.9	37.9	6.2	42.2	10.8	36.2	-4.0	36.8	-1.3	33.4	-9.0
1999 Jan	35.6	0.0	39.6	21.5	38.3	-3.8	33.6	-14.9	36.9	1.7	31.8	-2.8
Feb	35.7	-0.8	37.0	20.1	39.7	-0.7	34.8	-8.7	37.0	1.4	31.8	-7.3
Mar	36.9	4.5	38.0	8.9	41.4	13.1	33.7	3.4	37.0	3.6	35.0	1.2
Apr	37.1	7.5	40.7	4.9	41.1	8.4	35.1	15.5	37.2	7.8	34.3	5.9
May	37.0	-2.4	39.3	-5.3	38.8	-2.0	32.6	-11.9	37.9	-0.3	34.7	-4.7
Jun	37.7	-0.8	38.2	-10.5	39.7	7.0	34.0	-0.6	39.0	1.8	34.9	-5.7
Jul	35.7	-3.0	41.3	5.9	38.2	-7.7	31.8	0.3	35.4	-0.3	34.2	-7.3
Aug	36.0	-0.3	39.3	-6.9	42.1	6.6	28.0	-14.4	35.5	2.6	34.3	-5.0
Sep	37.5	0.0	39.3	0.0	40.2	2.6	33.9	6.3	36.8	-0.3	37.2	-1.6
Oct												
Nov												
Dec												
Average:												
Jan-Sep98	36.4		38.0		39.0		34.2		36.3		35.4	
Jan-Sep99	36.6		39.2		39.9		33.1		37.0		34.2	
% Change	0.5		3.2		2.4		-3.4		2.0		-3.1	

* Average Actual Hours, All Workers, Main Job / Monthly percent changes are calculated as month over same month previous year

3.5B B.C. INDUSTRIAL COMPARISON - AVERAGE WEEKLY HOURS WORKED*

	All Service Producing Industries		Transport. and Warehousing		Trade		Finance & Related		Selected Breakout of Community & Personal Service								Public Administration		Total All Industries	
									Profess., Scient. & Tech Services		Education		Health and Social Services		Accommod., Food & Bev.					
	Hrs	% Chg	Hrs	% Chg	Hrs	% Chg	Hrs	% Chg	Hrs	% Chg	Hrs	% Chg	Hrs	% Chg	Hrs	% Chg	Hrs	% Chg		
1989	33.9		37.1		33.9		35.9		37.0		32.2		30.6		32.8		34.6		34.8	
1990	33.4	-1.5	36.8	-0.8	33.6	-0.9	35.4	-1.4	35.7	-3.5	30.9	-4.0	30.4	-0.7	32.0	-2.4	34.0	-1.7	34.4	-1.1
1991	32.6	-2.4	36.1	-1.9	32.8	-2.4	34.1	-3.7	36.8	3.1	29.7	-3.9	29.6	-2.6	31.0	-3.1	33.7	-0.9	33.5	-2.6
1992	32.2	-1.2	35.5	-1.7	32.5	-0.9	34.3	0.6	35.3	-4.1	29.4	-1.0	30.2	2.0	29.3	-5.5	33.3	-1.2	33.1	-1.2
1993	32.3	0.3	36.3	2.3	32.9	1.2	34.1	-0.6	35.4	0.3	28.6	-2.7	29.2	-3.3	30.6	4.4	33.0	-0.9	33.3	0.6
1994	32.2	-0.3	36.4	0.3	32.8	-0.3	33.2	-2.6	35.3	-0.3	29.5	3.1	29.5	1.0	31.1	1.6	32.4	-1.8	33.3	0.0
1995	32.2	0.0	36.2	-0.5	32.4	-1.2	32.9	-0.9	35.4	0.3	30.3	2.7	29.7	0.7	30.1	-3.2	33.3	2.8	33.2	-0.3
1996	32.3	0.3	35.6	-1.7	33.1	2.2	33.4	1.5	36.5	3.1	29.8	-1.7	29.4	-1.0	29.5	-2.0	33.2	-0.3	33.2	0.0
1997	32.1	-0.6	36.2	1.7	33.3	0.6	33.8	1.2	35.3	-3.3	29.3	-1.7	29.4	0.0	29.8	1.0	33.2	0.0	33.0	-0.6
1998	31.5	-1.9	35.5	-1.9	32.0	-3.9	33.5	-0.9	34.5	-2.3	27.9	-4.8	28.5	-3.1	30.4	2.0	32.7	-1.5	32.5	-1.5
1998																				
Jan	32.7	0.0	36.0	2.3	33.6	-0.6	35.0	-2.5	35.9	2.0	32.1	-0.9	29.4	-3.6	30.0	7.1	35.3	-1.9	33.3	0.0
Feb	32.7	0.3	36.6	6.4	33.4	0.6	34.9	-5.7	36.6	0.8	32.7	4.8	29.4	-3.0	30.5	8.2	35.3	1.4	33.5	0.3
Mar	29.9	-9.1	35.1	-2.8	31.1	-9.9	33.2	-7.3	35.8	-2.7	15.2	-50.5	28.1	-6.3	28.7	-2.0	31.7	-8.4	31.1	-7.4
Apr	31.1	-6.6	35.0	-3.3	31.7	-7.3	31.7	-8.4	35.8	-6.8	27.5	-13.8	29.2	-3.6	28.3	-4.4	30.7	-15.4	31.8	-6.7
May	32.1	-2.7	37.0	1.1	31.6	-8.1	33.6	1.8	35.1	-5.1	32.2	-1.2	28.4	-8.4	30.3	2.7	34.6	0.0	33.4	-1.5
Jun	33.0	-0.9	35.6	-8.2	32.7	-6.3	35.7	5.6	35.4	-1.1	33.8	-0.3	29.9	-1.6	30.9	4.4	34.0	2.4	34.1	-0.6
Jul	30.2	-2.3	34.7	-4.1	31.4	-4.0	32.0	-6.4	33.6	-5.9	16.1	5.2	26.6	-8.0	31.6	3.9	33.4	7.4	31.6	-2.2
Aug	29.8	3.8	36.2	-0.5	31.8	2.3	32.4	4.9	29.8	-2.3	13.9	6.1	26.2	1.2	32.3	3.9	30.3	6.7	31.2	2.0
Sep	32.8	-1.8	36.1	-4.5	32.7	-3.3	34.3	4.6	34.8	-4.1	34.0	-1.7	29.8	-2.0	33.2	7.8	33.6	-4.0	33.8	-1.5
Oct	30.2	-1.0	33.1	-3.8	30.5	-2.6	33.3	7.1	31.5	-4.5	29.9	-2.0	27.5	-2.1	29.9	0.3	29.4	5.0	30.9	-1.0
Nov	30.4	-0.7	33.9	-3.4	30.4	-2.9	32.1	2.9	33.7	0.3	30.2	1.7	28.0	1.1	28.6	-2.4	31.0	3.0	31.1	-0.3
Dec	33.1	-0.3	37.3	-0.5	33.8	-2.0	33.8	-3.2	36.6	3.4	33.1	0.9	30.1	1.7	30.2	-3.2	33.6	-5.4	33.8	-0.9
1999																				
Jan	32.4	-0.9	36.5	1.4	31.9	-5.1	36.1	3.1	35.7	-0.6	33.3	3.7	29.3	-0.3	29.3	-2.3	34.8	-1.4	33.0	-0.9
Feb	32.2	-1.5	37.2	1.6	31.7	-5.1	34.1	-2.3	36.8	0.5	32.5	-0.6	29.9	1.7	28.4	-6.9	33.0	-6.5	32.9	-1.8
Mar	30.1	0.7	35.7	1.7	31.6	1.6	33.7	1.5	36.2	1.1	16.2	6.6	26.8	-4.6	28.8	0.3	33.5	5.7	31.4	1.0
Apr	32.9	5.8	35.4	1.1	33.6	6.0	33.7	6.3	36.2	1.1	31.9	16.0	31.2	6.8	30.0	6.0	34.5	12.4	33.7	6.0
May	33.2	3.4	35.9	-3.0	34.3	8.5	34.9	3.9	35.7	1.7	31.8	-1.2	30.2	6.3	30.6	1.0	34.6	0.0	33.9	1.5
Jun	33.0	0.0	36.0	1.1	32.3	-1.2	34.7	-2.8	35.6	0.6	32.5	-3.8	31.5	5.4	31.4	1.6	35.0	2.9	34.0	-0.3
Jul	30.7	1.7	35.4	2.0	32.2	2.5	32.2	0.6	33.2	-1.2	16.8	4.3	28.3	6.4	31.4	-0.6	31.5	-5.7	31.7	0.3
Aug	29.3	-1.7	33.0	-8.8	31.3	-1.6	30.5	-5.9	32.0	7.4	14.1	1.4	26.6	1.5	31.8	-1.5	30.1	-0.7	30.8	-1.3
Sep	32.6	-0.6	34.4	-4.7	32.0	-2.1	33.6	-2.0	34.1	-2.0	33.4	-1.8	30.8	3.4	31.5	-5.1	33.7	0.3	33.6	-0.6
Oct																				
Nov																				
Dec																				
Average:																				
Jan-Sep98	31.6		35.8		32.2		33.6		34.8		26.4		28.6		30.6		33.2		32.6	
Jan-Sep99	31.8		35.5		32.3		33.7		35.1		26.9		29.4		30.4		33.4		32.8	
% Change	0.7		-0.9		0.3		0.2		0.9		2.1		3.0		-0.9		0.6		0.4	

* Average Actual Hours, All Workers, Main Job / Monthly percent changes are calculated as month over same month previous year

B.C. EARNINGS AND EMPLOYMENT TRENDS

This is a monthly report designed to assist analysts monitoring changes in inter-provincial and inter-industrial earnings and employment levels. The report provides figures on persons employed and actual dollars earned. Primary emphasis, however, is placed on 'percentage change' data to help highlight recent trends and/or structural shifts. Questions and comments should be directed to Linda Coldwell at (250) 356-2328 or Linda.Coldwell@gems3.gov.bc.ca

Definitions and Explanatory Notes

Average Hourly Wage Rate & Average Weekly Wage Rate

Beginning January 1997, information is collected on the usual wages or salary of employees at their main job. Respondents are asked to report their wage/salary before taxes and other deductions, and include tips, commissions and bonuses.

Average Weekly Hours Worked

Average actual number of hours worked per week, main job, is calculated by dividing total hours by the total number of employed persons. When a respondent holds more than one job or business, the job or business involving the greatest number of usual hours worked is considered to be the main job.

Real (after inflation) Average Weekly Wage Rate

Average weekly wage rates, as defined above, minus the rate of inflation as measured by the applicable Vancouver, Canada, or U.S. consumer price index.

Employment (derived from Labour Force Survey, Cat No. 71-001) (Actual)

All persons during the reference week who either a) did any work for pay or profit, or b) had a job but were absent because of illness, weather, vacation, labour disputes, or personal or family responsibility. United States trends are calculated from civilian employment seasonally adjusted data published by the U.S. Department of Commerce.

Employment by Industry

Employment by industry is based on the North American Industrial Classification System (NAICS).

Articles published in previous editions can be found on our internet site at : www.bcstats.gov.bc.ca