

PETROLEUM AND NATURAL GAS OWNERSHIP OF THE CROWSNEST COALFIELD

Scale 1: 75,000
Projection: BC Albers Equal Area Conic (NAD83)

Legend

Ownership

- Provincial Crown
- Freehold

Gas Lines

- Terasen
- TransCanada

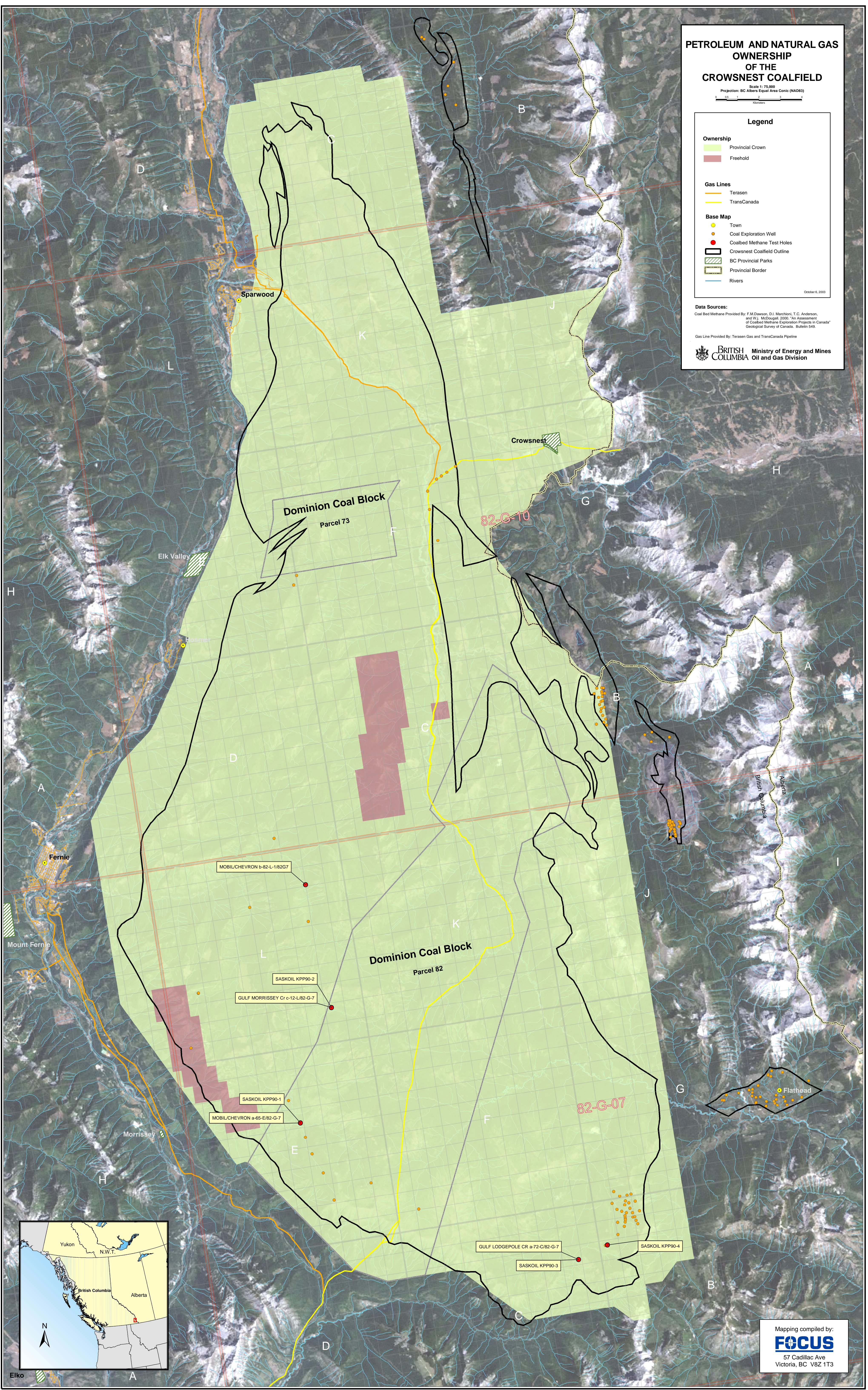
Base Map

- Town
- Coal Exploration Well
- Coalbed Methane Test Holes
- Crowsnest Coalfield Outline
- BC Provincial Parks
- Provincial Border
- Rivers

October 6, 2003

Data Sources:
Coal Bed Methane Provided By: F.M. Dawson, D.J. Marchoni, T.C. Anderson, and W.J. McQuigall, 2000. "An Assessment of Coalbed Methane Exploration Projects in Canada" Geological Survey of Canada, Bulletin 545.

Gas Line Provided By: Terasen Gas and TransCanada Pipeline
BRITISH COLUMBIA Ministry of Energy and Mines
Oil and Gas Division



Mapping compiled by:
FOCUS
57 Cadillac Ave
Victoria, BC V8Z 1T3