

# GEOLOGICAL MAP OF THE CROWSNEST COALFIELD

Scale 1: 75,000  
Projection: BC Albers Equal Area Conic (NAD83)

### Legend

**Geology**

- Quaternary
- Tertiary
- Upper Cretaceous
- Lower Cretaceous Blainmore Group
- Upper Jurassic to Lowermost Cretaceous Kootenay Group
- Triassic Spray River Group and Jurassic Fernie Formation
- Pennsylvanian and Permian Rocky Mountain Supper Group
- Mississippian
- Cambrian and Devonian
- Precambrian Purcell Super Group
- Phanerozoic Intrusive Rocks

**Structural Features**

- Anticline
- Anticline Overtumed
- Contact
- Normal App
- Normal Fault
- Syncline
- Thrust App
- Thrust Fault
- Syncline Overtumed
- Slide Block Area

**Gas Lines**

- Terasen
- TransCanada

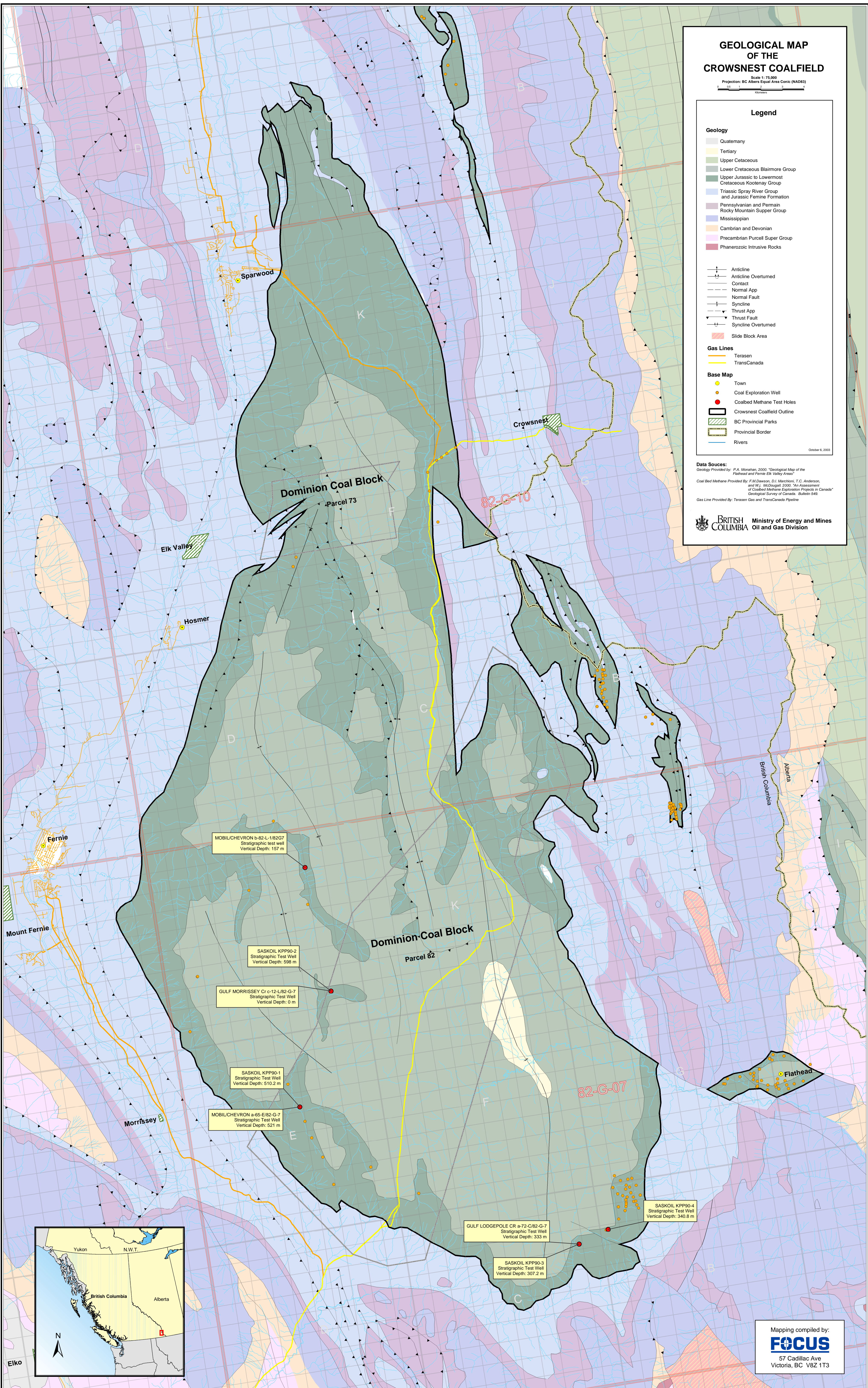
**Base Map**

- Town
- Coal Exploration Well
- Coalbed Methane Test Holes
- Crowsnest Coalfield Outline
- BC Provincial Parks
- Provincial Border
- Rivers

October 6, 2003

**Data Sources:**  
Geology Provided by: F.A. Monahan, 2000. "Geological Map of the Flathead and Fernie, Elk Valley Area"  
Coal Bed Methane Provided by: F.M. Dawson, D.L. Marchioni, T.C. Anderson, and W.L. McDougall, 2000. "An Assessment of Coalbed Methane Exploration Projects in Canada" Geological Survey of Canada. Bulletin 549  
Gas Line Provided by: Terasen Gas and TransCanada Pipeline

BRITISH COLUMBIA Ministry of Energy and Mines  
Oil and Gas Division



Mapping compiled by:  
**FOCUS**  
57 Cadillac Ave  
Victoria, BC V8Z 1T3