

INFRASTRUCTURE MAP OF THE CROWSNEST COALFIELD

Scale 1: 75,000
 Projection: BC Alberta Equal Area Conic (NAD83)

Legend	
Coal	
	Developed Prospect
	Past Producer
	Producer
	Prospect
	Showing
Gas Lines	
	Terason
	TransCanada
BC Hydro	
	Transmission Wires
Base Map	
	Town
	Coal Exploration Well
	Coalbed Methane Test Holes
	Crownsnest Coalfield Outline
	BC Provincial Parks
	Provincial Border
	Rivers
	Paved Road
	Unpaved Road
	Rail Line

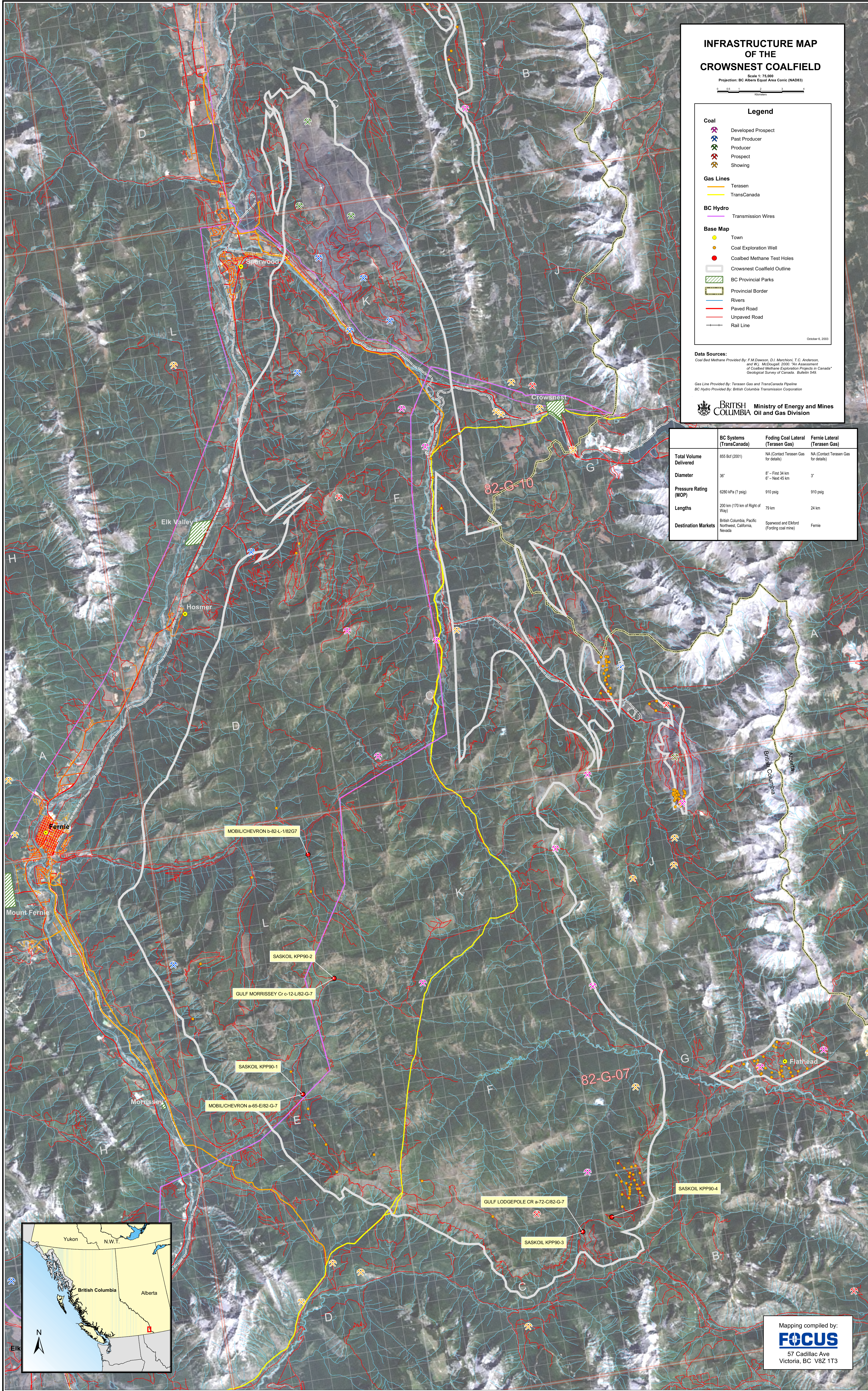
October 6, 2003

Data Sources:
 Coal Bed Methane Provided By: F.M. Dawson, D.I. Marchini, T.C. Anderson and W.J. McDougall, 2000. "An Assessment of Coalbed Methane Exploration Projects in Canada" Geological Survey of Canada. Bulletin 549.

Gas Line Provided By: Terason Gas and TransCanada Pipeline
 BC Hydro Provided By: British Columbia Transmission Corporation

BRITISH COLUMBIA Ministry of Energy and Mines
Oil and Gas Division

	BC Systems (TransCanada)	Fording Coal Lateral (Terason Gas)	Fernie Lateral (Terason Gas)
Total Volume Delivered	855 Bcf (2001)	NA (Contact Terason Gas for details)	NA (Contact Terason Gas for details)
Diameter	36"	8" - First 34 km 6" - Next 45 km	3"
Pressure Rating (MOP)	6280 kPa (7 psig)	910 psig	910 psig
Lengths	200 km (170 km of Right of Way)	73 km	24 km
Destination Markets	British Columbia, Pacific Northwest, California, Nevada	Sparwood and Elkford (Fording coal mine)	Fernie



Mapping compiled by:
FOCUS
 57 Cadillac Ave
 Victoria, BC V8Z 1T3