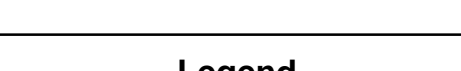


# LAND USE MAP OF THE CROWSNEST COALFIELD

Scale 1:75,000  
Projection: BC Albers Equal Area Conic (NAD83)



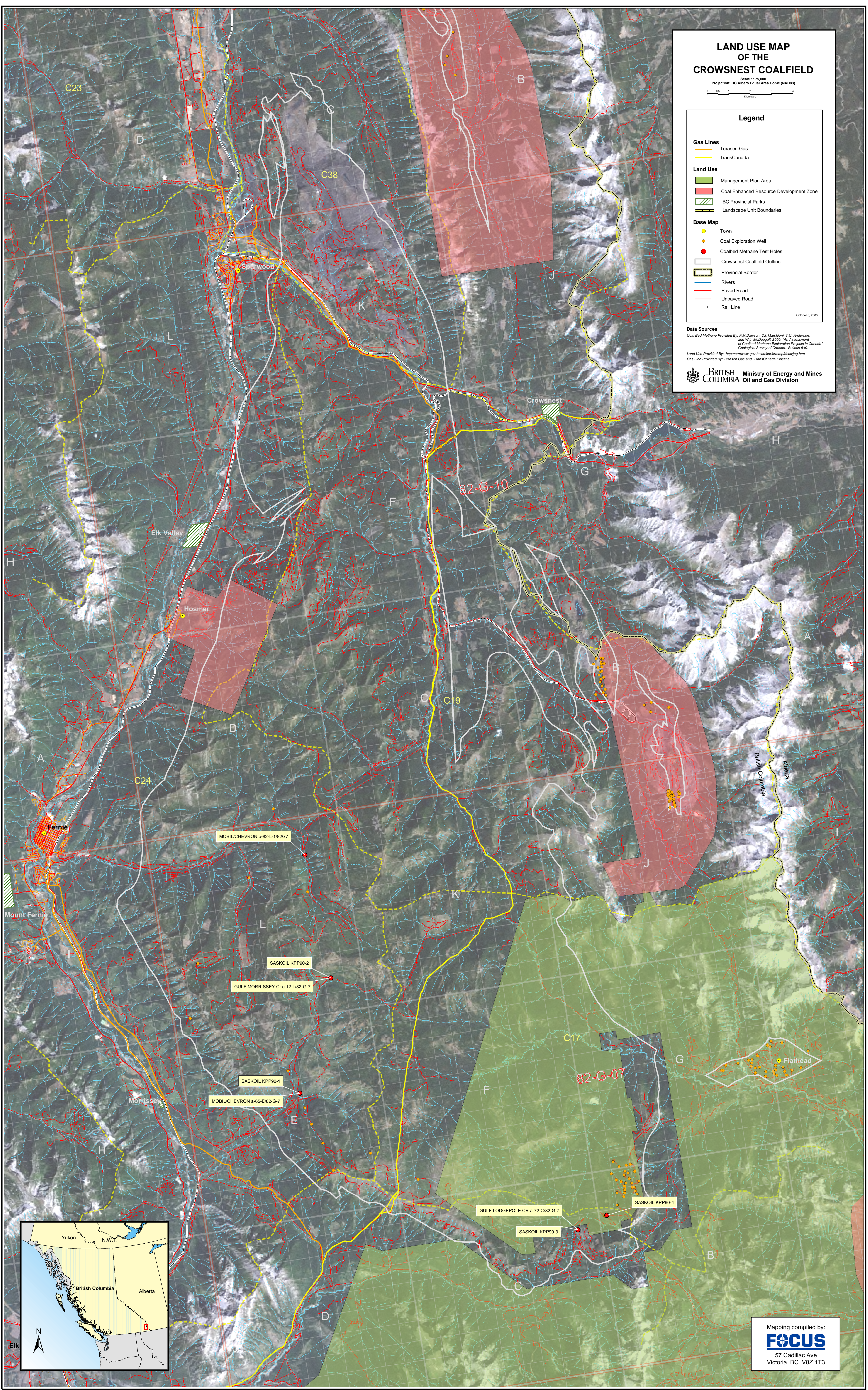
## Legend

- Gas Lines**
  - Terasen Gas
  - TransCanada
- Land Use**
  - Management Plan Area
  - Coal Enhanced Resource Development Zone
  - BC Provincial Parks
  - Landscape Unit Boundaries
- Base Map**
  - Town
  - Coal Exploration Well
  - Coalbed Methane Test Holes
  - Crowsnest Coalfield Outline
  - Provincial Border
  - Rivers
  - Paved Road
  - Unpaved Road
  - Rail Line

October 6, 2003

**Data Sources**  
Coal Bed Methane Provided By: F.M. Dawson, D.I. Marchioni, T.C. Anderson, and W.J. McDougall, 2000. "An Assessment of Coalbed Methane Exploration Projects in Canada" Geological Survey of Canada, Bulletin 549  
Land Use Provided By: <http://srmwww.gov.bc.ca/ksr/srmp/0303/0303.htm>  
Gas Line Provided By: Terasen Gas and TransCanada Pipeline

**BRITISH COLUMBIA** Ministry of Energy and Mines  
Oil and Gas Division



Mapping compiled by:  
**FOCUS**  
57 Cadillac Ave  
Victoria, BC V8Z 1T3