

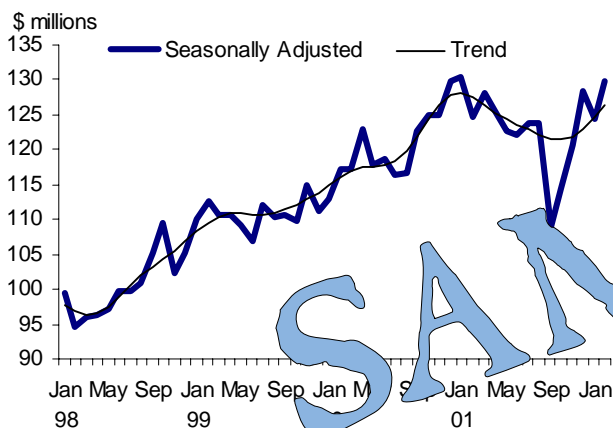
Tourism Sector Monitor ♦ May 2002

Highlights

Room revenue

Room revenue in BC rose 4.5% (seasonally adjusted) in **February**. Revenue was up in most regions led by strong gains in Vancouver Island/Coast (6.4%) and Mainland/Southwest (5.0%). Kootenay (-1.5%) and Cariboo (-2.4%) were the only regions that experienced a decrease in revenues. North Coast had no change in revenues.

Room revenues increase in February



Visitor Entries

Visitor entries dropped 3.5% in **March** to 648,700. Entries from both the United States (-3.8%) and overseas (-2.1%) were down. Canadian re-entries fell (-1.2%) although re-entries from overseas increased by 1.7%. US same-day auto trips decreased 3.2% and entries from Oceania increased (+2.1%).

Visitor entries fall in March

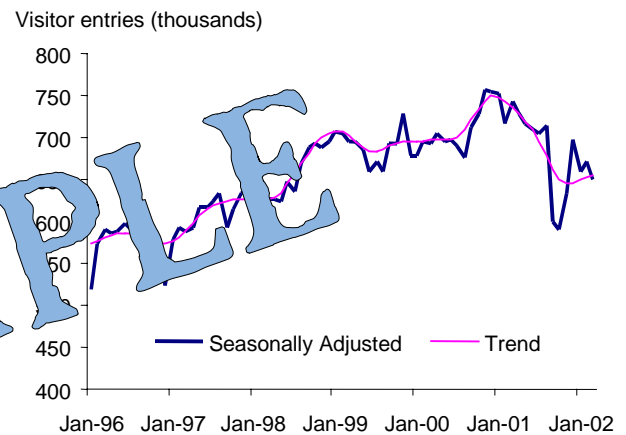


Table 1. Room Revenue* Summary

Accommodation Type			
	Feb.02 (\$000)	Jan. 02 (\$000)	% change
Total	128,637	123,883	+3.8
Hotels	93,579	90,792	+3.1
Motels	16,886	16,087	+5.0
Other Acc.	18,172	17,004	+6.9
Regions (Top 3 performers)			
Vancouver Island/Coast	23,261	21,857	+6.4
Mainland Southwest	71,490	68,079	+5.0
Thompson Okanagan	18,796	17,913	+4.9

*Seasonally adjusted room revenue

Other indicators

BC restaurant, caterer and tavern receipts slipped 1.7% in March. Both vehicle (-1.4%) and passenger traffic (-5.2%) on BC Ferries were down in March, compared to the same month of last year. Passenger traffic at the Vancouver airport also fell 7.0% over the same time period. The cost of a US \$ was \$1.581 Canadian in April, up from \$1.557 a year earlier.

A Look Ahead...

Preliminary estimates for March show room revenues up 0.1% (seasonally adjusted) over February. Unadjusted numbers show a 0.4% increase over the same month in 2001.

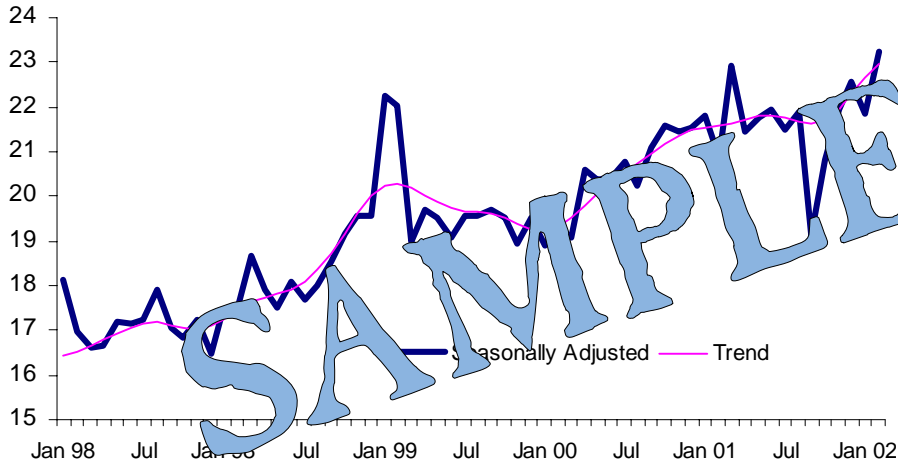
Tourism Trends

Room Revenue

Room revenue grew 4.5% in February. Mainland/Southwest experienced an increase of 5.0% and in Vancouver Island/Coast there was a jump of 6.4%. Thompson-Okanagan posted a gain (+4.9%) for the fifth consecutive month. Nechako came out of its recent slump growing by 1.9%. Kootenay (-1.5%) and Cariboo (-2.4%) were the only regions to see a decrease in room revenues. Room revenue in BC reached \$129.9 million in February which is an increase of over \$5 million compared to both January, and February of last year.

Room revenue in Vancouver Island/Coast jumped up in February

Room Revenue - seasonally adjusted (millions)



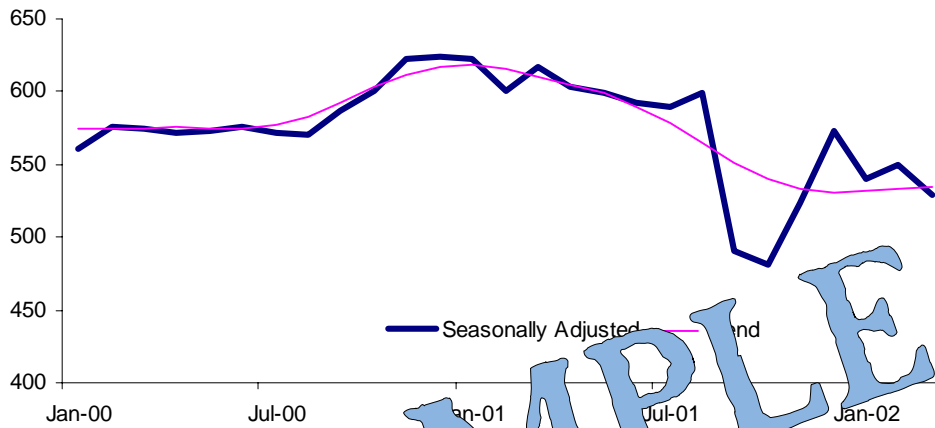
All types of accommodations in BC saw room revenues rise in February. Large hotels rebounded (+6.7%) after slumping in January while motel revenues (+5.0%) were up for the third month in a row. Vacation rentals posted a 2.6% jump marking the seventh straight month of growth.

Visitor Entries

Visitor entries fell 3.5% in March, after an increase of 2.2% in the previous month. Entries from the United States were down 3.8% as a result of a slide in both same-day (-4.1%) and overnight (-3.0%) visitors. The number of visitors entering BC from overseas also decreased (-2.1%). Asian entries dropped 2.8% and European entries fell 1.4%. The only bright spot was a 2.1% increase in entries from Oceanic countries such as Australia.

Decreased entries from the US helped to cause BC's lower visitor entry levels in February

US visitor entries (thousands)



There was a 1.2% decrease in the number of Canadians returning to the country via BC. Same-day auto trips to the US were down 3.2% but more Canadians (+1.7%) returned from overseas trips via BC.

Table 2. Traveller Entries (seasonally adjusted)

	Mar-02	Feb-02	% chg from Feb-02
	('000)	('000)	
American visitors			
Total	531	552	-3.8
Same-day	225	235	-4.1
Overnight	307	316	-3.0
Overseas visitors			
Total	118	120	-2.1
Europe	40	41	-1.4
UK	20	20	-3.1
Asia	63	64	-2.8
Japan	21	20	3.8
Taiwan	8	9	-10.7
Oceania	10	9	2.1
Canadian re-entries			
Total	579	586	-1.2
From overseas	77	75	1.7
From US same-day auto	290	299	-3.2
<i>(BC STATS & Statistics Canada)</i>			

Other Tourism Indicators

BC restaurant, catering and tavern receipts fell 1.7% in March. This was a result of declines at both drinking (-4.2%) and food (-10.2%) establishments. Canada-wide, receipts slipped 0.5%. Drinking places saw a 0.4% decline and food services had a 0.5% fall in receipts.

Both vehicle (-1.4%) and passenger traffic (-5.2%) on BC Ferries fell in March, compared to the same month of last year. Passenger traffic at the Vancouver airport also declined 7.0% over the same time period. While the number of passengers flying internationally (other than to or from the US) increased 2.4%, the number flying within Canada (-9.7%) and the US (-9.6%) dropped.

A devaluation of the Canadian \$ may have affected travel by Canadians. In April, Canadians paid \$1.581 for a US \$, up from \$1.557 a year earlier. The Canadian dollar also lost value compared with the pound sterling which cost Canadians \$2.282.

Table 3. Other Tourism Indicators

	Reference period	Total	Change from year ago
Hotel Industry			
Occupancy rate	Mar-02	58.9%	-5.0 pp.
Average room charge <i>(Pannell Kerr Forster)</i>	Mar-02	\$120.9	2.9%
Airport Passengers			
		(000s)	(%)
Vancouver International Airport			
Total traffic	Mar-02	1,181	-7.0
US	Mar-02	300	-9.6
Other International	Mar-02	293	2.4
Canada <i>(YVR)</i>	Mar-02	588	-9.7
Victoria International Airport			
Total traffic <i>(Victoria Airport Authority)</i>	Mar-02	95	-6.5
Restaurant Receipts			
		(\$ millions)	(%)
Full service	Mar-02	234	-2.6
Limited service	Mar-02	140	0.7
Drinking places <i>(Statistics Canada)</i>	Mar-02	29	-4.2
Transportation			
		(000s)	(%)
Coquihalla Highway			
Passenger Vehicles <i>(Ministry of Transportation & Highways)</i>	Apr-02	169	-1.7
BC Ferries			
Vehicle Volume	Apr-02	19	-1
Passenger Volume <i>(BC Ferries)</i>	Apr-02	1,344	-5.2
Exchange Rates			
		Cdn \$	Change from year ago
US \$	Apr-02	1.581	0.024
UK Pound	Apr-02	2.282	0.047
Japanese Yen	Apr-02	0.012	0.000
Australian \$ <i>(Bank of Canada)</i>	Apr-02	0.847	0.066

SAMPLE

Table 1: Seasonally Adjusted Room Revenue by Development Region (\$000)

Period	Vancouver Island/Coast	Mainland Southwest	Thompson Okanagan	Kootenay	Cariboo	North Coast	Nechako	Northeast	BC Total
1996	198,897	621,444	139,958	41,896	42,632	18,498	9,302	20,772	1,093,399
1997	205,480	665,314	146,520	44,803	43,225	17,800	9,301	25,142	1,157,586
1998	219,677	686,970	155,799	47,223	42,381	17,923	8,932	27,183	1,206,090
1999	238,389	778,153	166,895	53,603	40,788	18,651	8,684	24,183	1,329,347
2000	245,355	845,728	185,049	63,797	43,546	20,072	8,443	29,617	1,441,606
2001	258,549	853,274	191,784	64,158	42,524	18,668	8,744	35,653	1,473,354

Quarterly data

2000 Q3	62,137	204,718	47,250	15,591	10,869	5,246	2,072	7,491	355,375
2000 Q4	64,536	223,529	48,040	17,542	11,231	4,653	1,941	8,215	379,685
2001 Q1	65,591	229,034	47,140	15,656	10,356	4,763	2,182	8,341	383,062
2001 Q2	65,155	215,897	47,698	14,881	10,501	4,666	2,122	9,259	370,181
2001 Q3	62,476	204,461	47,154	16,167	10,817	4,744	2,213	8,691	356,723
2001 Q4	65,326	203,883	49,791	17,454	10,851	4,495	2,227	9,362	363,388

Monthly data

Dec-00	21,545	77,155	16,104	5,970	3,931	1,553	669	2,894	129,821
Jan-01	21,806	79,125	15,883	5,281	3,216	1,568	788	2,663	130,330
Feb-01	20,881	74,547	15,575	5,122	3,496	1,564	698	2,697	124,581
Mar-01	22,904	75,362	15,682	5,252	3,644	1,631	696	2,981	128,152
Apr-01	21,455	74,579	15,667	4,484	3,537	1,549	712	3,522	125,504
May-01	21,783	70,975	15,887	5,210	3,440	1,535	696	3,011	122,536
Jun-01	21,918	70,343	16,145	5,188	3,524	1,582	715	2,727	122,141
Jul-01	21,485	71,860	16,213	5,351	3,540	1,625	775	2,853	123,704
Aug-01	21,880	71,695	16,082	5,424	3,636	1,569	715	2,919	123,961
Sep-01	19,110	60,906	14,859	5,392	3,640	1,550	682	2,919	109,058
Oct-01	20,803	63,001	16,212	5,271	3,570	1,569	715	3,128	114,291
Nov-01	21,962	67,788	16,332	5,597	3,825	1,480	760	3,021	120,565
Dec-01	22,561	73,094	17,247	6,585	3,566	1,455	731	3,213	128,532
Jan-02	21,857	68,079	17,913	6,648	4,025	1,588	707	3,478	124,268
Feb-02	23,261	71,490	18,796	5,547	3,931	1,668	721	3,614	129,916

Month-over-month percent growth rates

Dec-00	0.5	5.6	0.8	0.1	8.0	1.2	11.3	3.9	3.9
Jan-01	1.2	-1.5	-1.1	-11.5	-18.2	1.0	17.8	-8.0	0.4
Feb-01	-4.2	-5.8	-1.9	-3.0	8.7	-0.2	-11.3	1.3	-4.4
Mar-01	9.7	1.4	0.7	2.5	4.2	4.2	-0.3	10.5	2.9
Apr-01	-6.3	-1.0	-0.1	-14.6	-2.9	-5.0	2.3	18.1	-2.1
May-01	1.5	-4.8	1.4	16.2	-2.7	-0.9	-2.3	-14.5	-2.4
Jun-01	0.6	-0.9	1.6	-0.4	2.4	3.1	2.7	-9.4	-0.3
Jul-01	-2.0	2.2	0.4	3.1	0.5	2.7	8.4	4.6	1.3
Aug-01	1.8	-0.2	-0.8	1.4	2.7	-3.5	-2.5	2.3	0.2
Sep-01	-12.7	-15.0	-7.6	-0.6	0.1	-1.3	-9.7	0.0	-12.0
Oct-01	8.9	3.4	9.1	-2.2	-1.9	1.3	7.9	7.2	4.8
Nov-01	5.6	7.6	0.7	6.2	1.5	-5.7	3.2	-3.4	5.5
Dec-01	2.7	7.8	5.6	17.7	0.8	-2.4	-3.8	6.4	6.6
Jan-02	-3.1	-6.9	3.9	1.0	9.9	8.5	-3.2	8.3	-3.3
Feb-02	6.4	5.0	4.9	-1.5	-2.4	0.0	1.9	3.9	4.5

February month-over-month percent growth

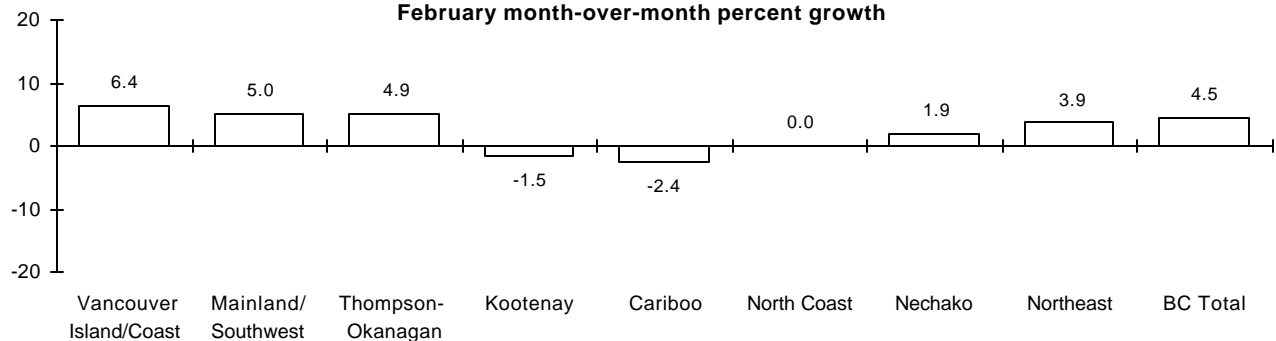


Table 2: Seasonally Adjusted Room Revenue by Accommodation Type (\$000)

Period	Hotels (Rooms)				Motels	Vacation Rentals	Miscellaneous incl. Fishing Lodges
	250+	150-249	76-149	1-75			
1996	344,557	137,715	207,279	149,564	162,185	49,945	42,155
1997	368,654	147,392	220,648	151,452	167,521	54,331	47,588
1998	366,256	158,023	237,901	163,131	166,418	62,152	52,208
1999	385,951	182,241	274,381	184,163	170,054	74,101	58,456
2000	424,158	188,617	294,167	197,027	180,812	93,116	63,709
2001	430,133	183,170	294,290	197,724	184,771	108,111	75,154

Quarterly data

2000 Q3	103,445	45,958	73,517	47,622	45,223	23,488	16,418
2000 Q4	114,516	48,501	76,152	50,673	45,877	25,845	17,144
2001 Q1	117,291	48,010	74,574	51,376	45,536	28,558	17,356
2001 Q2	108,768	47,107	74,104	49,516	46,348	25,561	18,686
2001 Q3	100,912	45,667	72,294	48,004	46,265	25,824	19,079
2001 Q4	103,161	42,387	73,317	48,828	46,622	28,169	20,034

Monthly data

Dec-00	39,709	16,041	25,613	17,174	15,257	8,721	5,757
Jan-01	39,788	15,780	25,005	17,680	15,160	11,455	5,774
Feb-01	39,199	15,836	24,552	16,673	15,121	8,380	5,712
Mar-01	38,305	16,394	25,017	17,023	15,255	8,723	5,871
Apr-01	38,609	16,265	24,865	16,565	15,584	8,484	6,079
May-01	35,019	15,609	24,766	16,512	15,407	8,333	6,331
Jun-01	35,140	15,233	24,473	16,439	15,357	8,744	6,276
Jul-01	36,496	15,555	24,658	16,672	15,731	8,491	6,320
Aug-01	35,637	16,611	25,402	16,554	16,094	8,778	6,418
Sep-01	28,780	13,501	22,235	14,777	14,440	8,755	6,341
Oct-01	31,283	13,567	23,913	16,216	15,401	9,980	6,169
Nov-01	34,116	13,946	24,342	16,855	15,340	9,536	6,679
Dec-01	37,762	14,874	25,062	15,977	15,881	9,667	7,185
Jan-02	34,835	14,652	25,218	16,007	15,887	9,772	7,232
Feb-02	37,167	14,766	25,418	16,122	15,886	10,028	8,144

Month-over-month percent growth

Dec-00	0.7	1.0	1.1	-1.5	3.9	2.8
Jan-01	0.2	1.6	2.4	-0.6	31.4	0.3
Feb-01	-1.5	0.4	-1.8	-5.7	-0.3	-1.1
Mar-01	-2.1	3.5	1.9	2.1	0.9	2.8
Apr-01	0.8	-0.8	-0.6	-2.7	2.2	3.5
May-01	-9.3	-4.0	-0.4	-0.3	-1.1	4.2
Jun-01	0.3	-2.4	-1.2	-0.4	-0.3	-0.9
Jul-01	3.9	2.1	0.8	1.4	2.4	0.7
Aug-01	-2.4	6.8	3.0	-0.7	2.3	1.6
Sep-01	-19.2	-18.7	-12.5	-10.7	-10.3	-1.2
Oct-01	8.7	0.5	7.5	9.7	6.7	-2.7
Nov-01	9.1	2.8	1.8	2.6	-0.4	8.3
Dec-01	10.7	6.6	3.0	-4.0	3.5	7.6
Jan-02	-7.7	-1.5	0.6	0.7	1.3	0.6
Feb-02	6.7	0.8	1.2	0.3	5.0	12.6

February month-over-month percent growth

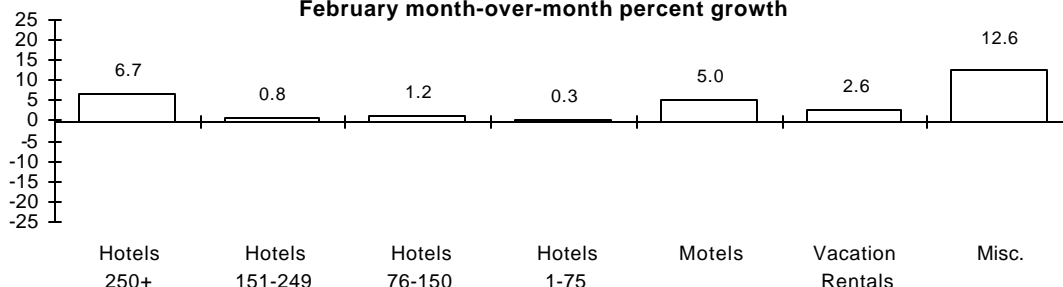


Table 3: Unadjusted Room Revenue by Development Region

Development Region	Revenue				Properties		Rooms	
	(\$000)		% chg from		(#)	# chg from	(#)	# chg from
	Feb-02	YTD	Feb 01	YTD 00	Feb-02	Feb 01	Feb-02	Feb 01
Vancouver Island/Coast								
Total - all accommodation types	12,478	21,444	12.2	7.2	361	-5	14,504	-73
Fishing lodges	137	265	2.0	8.7	11	-1	287	-9
Total - Hotels	8,425	14,173	10.0	3.8	127	-3	8,170	-148
1-75 Rooms	2,367	4,101	-1.1	-6.1	86	-2	3,171	-102
Motels	1,747	3,173	13.8	10.5	124	-3	3,304	10
Vacation Rentals	1,269	2,257	34.2	31.7	43	1	965	56
Miscellaneous	900	1,576	5.5	4.4	56	1	1,778	18
Mainland/Southwest								
Total - all accommodation types	67,704	123,326	-3.2	-8.5	399	0	32,984	-576
Total - Hotels	56,795	104,425	-5.8	-8.3	230	-4	27,853	-747
250+ Rooms	28,340	51,810	-4.8	-7.8	30	0	10,906	-300
150-249 Rooms	7,914	14,869	-12.5	-11.6	28	-2	5,280	-315
76-149 Rooms	13,207	24,301	-0.1	-2.3	72	-1	7,474	-61
1-75 Rooms	7,334	13,446	-11.3	-15.9	100	-1	4,193	-71
Motels	1,574	3,058	-6.4	-6.2	98	-4	3,168	-58
Vacation Rentals	7,526	12,893	12.3	-16.1	40	5	1,483	171
Thompson/Okanagan								
Total - all accommodation types	13,337	23,992	22.5	20.0	117	0	14,563	-31
Total - Hotels	6,302	11,711	11.7	12.2	33	-2	6,237	17
76+ Rooms	3,886	7,137	10.9	11.3	3	1	3,508	122
1-75 Rooms	2,416	4,574	15.5	13.1	66	-3	2,729	-105
Motels	2,507	4,444	25.9	19.4	23	-4	6,491	3
Vacation Rentals	2,929	274	20.2	23.2	25	-1	999	-257
Kootenay								
Total - all accommodation types	6,117	11,322	27.4	26.9	189	-5	5,822	70
Total - Hotels	2,194	4,304	7.1	11.8	42	-7	2,164	-270
76+ Rooms	58	1,608	7.1	13.4	10	-1	1,022	-80
1-75 Rooms	1,536	2,896	7.1	11.0	32	-6	1,142	-190
Motels	1,277	2,352	23.2	27.5	100	-5	2,175	-9
Vacation Rentals	1,379	2,287	28.8	18.2	17	1	753	17
Cariboo								
Total - all accommodation types	2,732	5,261	12.2	17.8	108	-3	4,016	41
Total - Hotels	1,685	3,196	16.1	19.5	27	-2	1,834	-27
Motels	836	1,608	-0.1	8.1	64	-1	1,926	21

SAMPLE

Table 3: Unadjusted Room Revenue by Development Region

Development Region	Revenue				Properties		Rooms	
	(\$000)		% chg from		(#)	# chg from	(#)	# chg from
	Feb-02	YTD	Feb 01	YTD 00	Feb-02	Feb 01	Feb-02	Feb 01
North Coast								
Total - all accommodation types	998	1,719	1.3	1.0	53	0	1,660	-3
Total - Hotels	604	983	-1.2	-4.4	21	3	995	96
Motels	305	547	3.1	5.7	24	-3	602	-99
Nechako								
Total - all accommodation types	430	843	2.7	-4.2	40	4	1,197	134
Motels	248	460	3.9	-14.1	26	2	684	50
Northeast								
Total - all accommodation types	4,819	8,837	9.1	9.9	63	1	2,476	21
Total - Hotels	1,837	3,591	18.1	22.0	20	0	1,282	0
Motels	778	1,520	17.8	11.7	31	1	895	28
British Columbia Total								
Total - all accommodation types	109,211	197,354	3.5	-1.0	1,607	-8	77,222	-417
Fishing lodges	185	375	8.6	11.8	25	-2	462	-17
Total - Hotels	78,191	142,873	-1.8	-4.1	572	-15	48,884	-1,079
250+ Rooms	30,128	54,471	-3.5	-7.2	32	0	11,628	-300
150-249 Rooms	10,754	20,011	-6.9	-6.2	22	-2	7,221	-315
76-149 Rooms	21,788	39,940	4.2	2.7	17	-2	16,265	-65
1-75 Rooms	15,521	28,451	-2.4	10.0	34	-11	13,770	-399
Motels	9,272	17,160	12.0	10.0	69	-17	19,245	-54
Vacation Rentals	15,377	26,593	14.1	-2.0	146	7	4,590	41
Miscellaneous	6,185	11,352	53.9	41.4	74	19	4,041	692

SAMPLE

Table 4: Unadjusted Room Revenue by Regional District

Development Region/ Regional District	Revenue				Properties		Rooms	
	(\$000)		% change from		(#)	# chg from	(#)	# chg from
	Feb-02	YTD	Feb 01	YTD 00	Feb-02	Feb 01	Feb-02	Feb 01
Vancouver Island/Coast								
17 Capital								
Total - All accommodation types	7,516	12,517	14.2	8.3	146	2	7,781	124
Total - Hotels	6,388	10,521	14.5	7.8	64	2	5,150	103
1-75 Rooms	1,435	2,487	5.4	1.8	39	2	1,589	53
Motels	630	1,136	17.4	11.2	32	2	1,097	38
Miscellaneous	327	566	-1.0	5.2	34	-3	1,386	-30
19 Cowichan Valley								
Total - All accommodation types	355	587	-1.1	-10.3	28	-1	598	-5
Motels	80	122	8.2	-4.5	14	0	244	-7
21 Nanaimo								
Total - All accommodation types	1,787	3,212	17.2	15.8	62	3	2,603	86
Total - Hotels	970	1,758	9.0	8.8	18	0	1,262	48
Motels	345	653	5.7	10.7	26	0	741	1
23 Alberni-Clayoquot								
Total - All accommodation types	1,079	1,887	6.5	4.0	43	-2	1,153	-24
Motels	118	212	-14.5	-19.6	20	-3	411	-43
25 Comox-Strathcona								
Total - All accommodation types	1,366	2,538	11.7	7.9	49	-2	1,521	-70
Motels	528	964	28.7	25.2	23	-1	673	33
43 Mount Waddington								
Total - All accommodation types	189	354	-15.8	-12.8	14	-4	399	-166
Mainland/Southwest								
09 Fraser Valley								
Total - All accommodation types	2,121	4,027	7.6	3.6	62	-2	2,466	-25
Total - Hotels	1,713	3,280	7.6	5.3	31	0	1,465	1
Motels	343	628	9.9	9.9	9	-3	892	-48
15 Greater Vancouver								
Total - All accommodation types	30,991	6,676	-11.1	-10.7	234	-4	24,824	-685
Total - Hotels	29,478	5,790	-11.1	-11.3	166	-5	22,269	-817
250+ Rooms	4,489	28,550	-13.7	-13.1	25	0	9,269	-300
150-249 Rooms	5,500	11,299	-14.2	-11.8	25	-2	4,738	-323
76-149 Rooms	6,000	11,049	-6.7	-9.2	50	-2	5,295	-182
1-75 Rooms	1,956	3,801	0.9	-1.1	66	-1	2,967	-12
Motels	992	1,922	-3.6	-4.8	43	-1	1,764	-13
29 Sunshine Coast								
Total - All accommodation types	142	274	2.4	11.6	16	-2	358	-59
Motels	59	135	-19.6	5.1	11	-1	240	-7
31 Squamish-Lillooet								
Total - All accommodation types	34,450	61,349	3.9	-7.7	87	8	5,336	193
Total - Hotels	25,534	46,330	0.2	-6.0	40	2	4,030	121
1-75 Rooms	5,117	9,154	-16.2	-22.0	19	1	753	-8
Vacation Rentals	7,179	12,196	12.2	-17.4	25	2	891	23
Miscellaneous	1,556	2,451	48.0	28.7	13	3	143	39

SAMPLE

Table 4: Unadjusted Room Revenue by Regional District

Development Region/ Regional District	Revenue				Properties		Rooms	
	(\$000)		% change from		(#)	# chg from	(#)	# chg from
	Feb-02	YTD	Feb 01	YTD 00	Feb-02	Feb 01	Feb-02	Feb 01
Thompson/Okanagan								
07 Okanagan-Similkameen								
Total - All accommodation types	1,274	2,327	15.5	14.5	86	2	2,675	47
Total - Hotels	725	1,303	11.0	11.4	17	1	1,137	74
Motels	253	478	32.0	32.8	59	-1	1,308	-46
33 Thompson-Nicola								
Total - All accommodation types	3,415	6,210	1.3	3.9	130	-5	4,495	-177
Total - Hotels	864	1,637	-16.1	-8.6	26	-3	1,442	-205
Motels	749	1,428	2.3	3.0	78	-3	2,387	38
35 Central Okanagan								
Total - All accommodation types	4,640	7,900	43.3	33.8	57	1	3,349	-112
Total - Hotels	2,510	4,574	20.1	19.2	23	0	1,818	0
76+ Rooms	1,960	3,605	20.7	20.5	11	0	1,263	0
1-75 Rooms	550	969	18.1	14.6	12	0	555	0
Motels	393	752	-22.2	-17.6	24	-1	1,019	-18
37 North Okanagan								
Total - All accommodation types	1,954	3,650	29.8	20.9	37	-1	1,469	-4
Total - Hotels	1,367	2,737	17.4	15.1	14	-1	842	-39
Motels	485	650	208.8	122.3	18	1	535	34
39 Columbia-Shuswap								
Total - All accommodation types	2,055	3,905	22.9	27.3	83	3	2,564	215
Total - Hotels	838	1,459	18.7	16.7	17	1	998	187
Motels	628	1,136	54.5	47.7	44	0	1,242	-5
Kootenay								
01 East Kootenay								
Total - All accommodation types	5,174	9,237	5.6	3.5	95	-4	3,768	87
Total - Hotels	1,666	3,180	0	3	4	-4	1,335	-204
Motels	697	1,382	2	3.9	46	-1	1,098	-20
Vacation Rentals	1,370	2,252	2	1	11	-1	716	8
Miscellaneous	1,441	423	126	108.4	14	2	619	303
03 Central Kootenay								
Total - All accommodation types	1,753	1,820	-3.2	1.7	63	3	1,418	38
Total - Hotels	5	989	0.1	6.0	14	-1	632	-42
Motels	378	536	15.7	7.8	31	-1	663	48
05 Kootenay Boundary								
Total - All accommodation types	486	870	33.5	26.0	31	-4	636	-55
Motels	240	434	38.2	37.5	23	-3	414	-37
Cariboo								
41 Cariboo								
Total - All accommodation types	849	1,569	15.1	15.4	59	-2	1,693	9
Motels	454	846	13.1	18.0	35	0	1,014	20
53 Fraser-Fort George								
Total - All accommodation types	1,883	3,692	10.9	18.9	49	-1	2,323	32
Total - Hotels	1,375	2,664	15.6	21.3	17	0	1,295	-1
Motels	382	761	-12.2	-1.1	29	-1	912	1

SAMPLE

Table 4: Unadjusted Room Revenue by Regional District

Development Region/ Regional District	Revenue				Properties		Rooms	
	(\$000)		% change from		(#)	# chg from	(#)	# chg from
	Feb-02	YTD	Feb 01	YTD 00	Feb-02	Feb 01	Feb-02	Feb 01
North Coast								
47 Skeena-Queen Charlotte								
Total - All accommodation types	520	800	-0.5	-5.8	25	2	867	14
Motels	126	188	-4.1	-1.8	10	0	259	0
49 Kitimat-Stikine								
Total - All accommodation types	478	919	3.4	7.8	28	-2	793	-17
Total - Hotels	224	407	-2.9	4.1	11	2	427	89
Motels	179	359	9.0	10.1	14	-3	343	-99
Nechako								
51 Bulkley-Nechako + 57 Stikine								
Total - All accommodation types	430	843	2.7	-4.2	40	4	1,197	134
Motels	248	460	3.9	-14.1	26	2	684	50
Northeast								
55 Peace River + 59 Northern Rockies								
Total - All accommodation types	4,819	8,837	9.1	9.9	63	1	2,476	21
Total - Hotels	1,837	3,591	18.1	22.0	20	0	1,282	0
Motels	778	1,520	17.8	11.7	31	1	895	28

SAMPLE

Table 5: Unadjusted Room Revenue by Urban Centre

Development Region/ Urban Centre	Revenue				Properties		Rooms	
	(\$000)		% change from		(#)	# chg from	(#)	# chg from
	Feb-02	YTD	Feb 01	YTD 00	Feb-02	Feb 01	Feb-02	Feb 01
Vancouver Island/Coast	12,478	21,444	12.2	7.2	361	-5	14504	0
Victoria (C)	6,217	10,239	16.7	9.5	74	-1	6008	111
Other CRD	1,299	2,278	3.4	3.3	72	3	1,773	13
Nanaimo (C)	1,074	1,997	8.9	10.0	22	1	1271	89
Port Alberni (C)	169	306	-13.7	-15.5	10	-1	316	-14
Rest of Development Region	3,719	6,623	10.6	5.7	183	-7	5,136	-199
Mainland/Southwest	67,704	123,326	-3.2	-8.5	399	0	32,984	-576
Downtown Vancouver (C)	17,599	32,392	-14.7	-14.5	81	-1	11,935	-972
Other Vancouver (C)	2,017	3,601	0.3	-5.6	40	0	3,074	1
Richmond (C)	5,992	11,667	-7.3	-3.3	22	1	4,079	256
Other GVRD	5,383	10,016	-5.6	-7.4	91	-4	5736	30
Whistler (DM)	33,955	60,404	4.2	-7.5	67	6	4812	136
Rest of Development Region	2,758	5,246	9.1	6.7	98	-2	3348	-27
Thompson/Okanagan	13,337	23,992	22.5	20.0	394	0	14563	-31
Penticton (C)	742	1,338	13.7	16.5	39	1	1569	39
Kamloops (C)	2,785	4,991	-0.4	2.8	60	-2	2986	-62
Kelowna (C)	4,483	7,589	44.8	34.9	46	1	2887	-146
Vernon (C)	1,634	3,305	10.1	4	11	1	1356	-17
Rest of Development Region	3,693	6,768	29.2	2	2	-2	5765	155
Kootenay	6,714	11,932	-7.4	26.1	189	-5	5822	70
Cranbrook (C)	433	960	8.1	21.3	18	-1	792	-30
Rest of Development Region	6,281	10,972	-29.0	27.4	171	-4	5030	100
Cariboo	2,732	5,261	12.2	17.8	108	-3	4016	41
Quesnel (C)	167	355	0.1	16.2	11	0	448	0
Williams Lake (C)	339	561	34.0	22.8	11	1	534	24
Prince George (C)	1,460	2,875	16.3	21.9	28	0	1,646	-3
Rest of Development Region	766	1,469	0.8	9.3	58	-4	1388	20
North Coast	998	1,719	1.3	1.0	53	0	1660	-3
Prince Rupert (C)	479	720	3.0	-4.5	14	2	700	11
Terrace (C)	279	527	-1.9	5.5	10	0	396	0
Rest of Development Region	239	473	2.0	5.4	29	-2	564	-14
Nechako	430	843	2.7	-4.2	40	4	1197	134
Smithers (T)	221	411	-0.2	2.1	10	1	398	17
Rest of Development Region	209	431	6.0	-9.5	30	3	799	418
Northeast	4,819	8,837	9.1	9.9	63	1	2476	21
Dawson Creek (C)	442	918	15.4	3.6	15	0	502	0
Fort St. John (C)	2,657	4,842	4.0	6.8	18	0	899	8
Rest of Development Region	1,720	3,078	0.2	0.2	30	1	1075	13

SAMPLE

Table 6: Historical Unadjusted Room Revenue by Development Region (\$000)

Period	Vancouver Island/Coast	Mainland Southwest	Thompson Okanagan	Kootenay	Cariboo	North Coast	Nechako	Northeast	Total
1996	198,897	621,444	139,958	41,896	42,632	18,498	9,302	20,772	1,093,399
1997	205,480	665,314	146,520	44,803	43,225	17,800	9,301	25,142	1,157,585
1998	219,677	686,970	155,799	47,223	42,381	17,923	8,932	27,183	1,206,090
1999	238,389	778,153	166,895	53,603	40,788	18,651	8,684	24,183	1,329,347
2000	245,354	845,728	185,049	63,797	43,546	20,072	8,443	29,617	1,441,606
2001	258,549	853,274	191,784	64,158	42,524	18,668	8,744	35,653	1,473,354

Quarterly data

2000 Q3	110,349	278,540	84,053	24,165	16,033	8,651	3,194	7,813	532,798
2000 Q4	39,106	159,610	27,696	10,920	8,402	2,861	1,603	7,212	257,408
2001 Q1	36,164	219,915	32,783	15,159	7,412	2,732	1,436	10,976	326,577
2001 Q2	69,310	213,702	44,787	13,256	11,148	5,121	2,084	7,253	366,660
2001 Q3	113,327	275,834	85,350	24,833	15,885	8,027	3,407	9,112	535,774
2001 Q4	39,748	143,822	28,864	10,910	8,079	2,789	1,818	8,312	244,343

Monthly data

Dec-00	10,029	57,263	9,054	3,898	2,280	716	402	2,430	86,074
Jan-01	8,872	64,887	9,109	4,137	2,029	716	461	3,063	93,276
Feb-01	11,124	69,939	10,889	5,269	2,436	985	419	3,554	104,614
Mar-01	16,167	85,090	12,785	5,753	2,947	1,030	556	4,359	128,687
Apr-01	16,810	63,668	10,726	3,619	3,136	996	498	2,492	101,946
May-01	23,344	69,340	14,855	4,483	3,641	1,488	653	2,131	119,935
Jun-01	29,156	80,693	19,206	5,154	4,371	2,636	933	2,629	144,779
Jul-01	39,771	99,864	30,638	8,210	5,369	3,051	1,161	2,970	191,020
Aug-01	44,932	103,890	34,355	9,627	5,593	2,772	1,222	3,162	205,553
Sep-01	28,623	72,080	20,357	6,996	4,341	2,218	1,024	2,980	139,201
Oct-01	17,427	47,670	11,828	3,914	3,411	1,259	533	2,918	89,281
Nov-01	11,655	41,661	7,054	2,644	2,537	861	550	2,665	69,633
Dec-01	10,666	54,491	9,983	4,333	3,111	663	434	2,729	85,430
Jan-02	8,966	55,772	7,654	2,818	2,029	721	413	4,019	88,143
Feb-02	12,478	67,704	9,237	6,114	2,732	998	430	4,819	109,211

Year-over-year percent changes

Dec-00	10.9	20.4	15.6	36.5	12.1	-10.0	-2.3	29.3	18.9
Jan-01	14.9	14.4	7.4	16.7	-10.6	-5.5	1.1	16.1	16.3
Feb-01	8.4	10.2	4.1	3.2	-5.6	-11.2	-10.0	7.0	8.1
Mar-01	20.6	10.6	5.0	-9.5	12.8	-1.5	-4.6	29.5	10.5
Apr-01	5.1	1.6	3.7	-12.7	-1.5	-4.4	4.6	59.9	2.5
May-01	7.9	1.2	7.5	1.3	-10.4	-10.7	-5.7	35.4	3.1
Jun-01	8.4	-1.1	6.6	0.4	-0.6	-10.3	-4.3	23.2	1.9
Jul-01	4.7	6.7	4.8	5.3	-1.9	-7.0	13.1	10.3	5.5
Aug-01	9.2	6.2	3.9	2.0	0.7	-7.1	9.0	25.8	6.2
Sep-01	-8.3	-17.3	-6.5	1.0	-1.6	-7.6	-2.1	14.3	-12.0
Oct-01	-2.4	-16.2	1.7	-6.9	-3.4	1.5	9.2	24.1	-9.3
Nov-01	3.8	-8.4	0.7	-6.2	-1.3	-4.0	25.7	9.7	-4.4
Dec-01	6.3	-4.8	10.3	11.7	-7.4	-7.4	8.0	12.3	-0.7
Jan-02	1.1	-14.3	17.0	26.1	24.7	0.6	-10.4	31.2	-5.5
Feb-02	12.2	-3.2	22.5	27.4	12.2	1.3	2.7	35.6	4.4

February year-over-year percent change

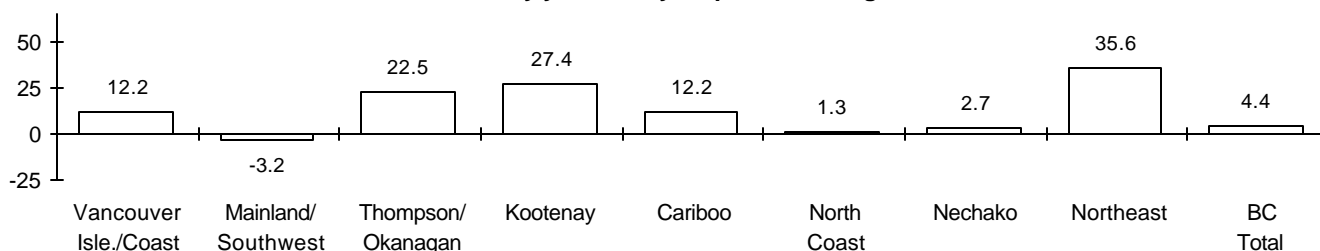


Table 7: Traveller Entries to Canada via BC, Unadjusted (000s)

Period	International								Canadian		
	Total	USA			Overseas				Total	USA same-day auto	Overseas
		Total	Same-day	Overnight	Total	Asia	Europe	Oceania*			
1995	6,577.2	5,368.6	2,488.2	2,880.4	1,208.6	646.4	418.8	109.9	13,501.6	9,885.3	581.3
1996	6,906.6	5,494.4	2,611.7	2,882.7	1,412.1	778.3	467.5	116.3	13,710.2	9,802.0	670.8
1997	7,322.8	5,892.6	2,798.2	3,094.4	1,430.2	798.0	449.1	122.1	13,427.5	9,328.6	767.3
1998	7,844.6	6,549.0	3,124.2	3,424.7	1,295.7	652.7	449.4	118.2	10,451.3	6,734.9	799.7
1999	8,269.2	6,861.7	3,370.2	3,491.5	1,407.5	716.0	484.6	126.0	9,588.1	5,813.1	798.7
2000	8,481.7	7,006.0	3,398.8	3,607.1	1,475.8	758.9	498.0	133.8	9,435.2	5,639.0	866.4
2001	8,312.5	6,894.5	3,246.8	3,647.8	1,418.0	731.8	466.3	131.9	8,328.6	4,720.3	902.8
Quarterly data											
2000 Q2	2,287.6	1,860.0	918.0	941.9	427.6	219.8	144.0	38.4	2,445.6	1,482.9	210.7
2000 Q3	3,211.6	2,634.0	1,137.9	1,496.1	577.6	273.8	224.9	43.4	2,925.1	1,748.4	208.3
2000 Q4	1,540.9	1,291.4	698.7	592.7	249.6	141.9	67.8	26.9	1,975.4	1,201.9	195.9
2001 Q1	1,530.0	1,296.5	691.4	605.0	233.6	130.6	64.4	27.9	2,019.1	1,146.3	280.0
2001 Q2	2,342.8	1,935.5	949.8	985.7	407.3	208.1	134.0	39.7	2,351.5	1,427.9	217.6
2001 Q3	3,132.6	2,572.8	1,103.4	1,469.4	559.8	272.7	204.5	42.7	2,597.1	1,470.4	215.0
2001 Q4	1,307.1	1,089.8	502.1	587.7	217.3	120.4	63.4	21.6	1,360.9	675.8	190.2
2002 Q1	1,374.8	1,146.7	527.3	619.4	228.1	127.9	65.7	21.9	1,548.3	728.5	275.5
Monthly data											
Dec-00	553.5	462.1	230.3	231.8	91.4	47.6	24.4	13.0	613.7	373.8	70.5
Jan-01	462.0	388.9	222.4	166.5	73.1	40.9	17.4	11.3	664.4	375.1	105.1
Feb-01	489.8	421.2	216.4	204.9	68.6	36.8	20.2	8.2	594.0	347.5	77.1
Mar-01	578.2	486.4	252.7	233.7	91.9	52.9	26.8	8.2	760.7	423.6	97.8
Apr-01	595.7	491.9	262.6	229.3	103.8	56.9	29.9	8.9	775.1	459.8	81.0
May-01	785.9	652.9	326.6	326.3	133.0	65.1	45.0	15.2	807.8	477.2	73.7
Jun-01	961.2	790.7	360.6	430.2	170.5	89.1	59.1	17.1	768.6	490.9	62.9
Jul-01	1,200.3	988.2	423.0	565.2	212.7	106.5	74.2	23.3	977.6	577.7	64.0
Aug-01	1,227.4	1,025.0	422.1	602.9	209.9	109.7	74.4	27.7	1,038.7	597.1	87.3
Sep-01	704.8	559.5	258.3	307.4	145.1	71.4	39.9	14.8	580.8	295.7	63.7
Oct-01	408.0	331.8	154.0	177.8	75.2	40.8	23.8	6.2	462.6	216.2	60.3
Nov-01	390.1	336.1	168.3	168.1	83.5	50.7	15.2	4.8	433.9	217.0	61.0
Dec-01	509.0	421.1	179.1	241.6	87.6	46.9	24.3	10.6	464.4	242.6	69.0
Jan-02	406.9	339.1	164.1	148.8	67.8	38.5	17.5	8.6	492.6	220.6	103.0
Feb-02	459.9	388.6	173.1	214.9	71.3	40.9	21.2	6.5	459.4	227.2	77.5
Mar-02	508.0	418.9	189.3	229.7	89.1	48.5	26.9	6.8	596.2	280.8	95.1
Year-over-year percent changes											
Dec-00	13.5	13.1	11.9	14.3	15.4	7.4	14.6	50.1	-0.5	-0.8	24.7
Jan-01	9.7	9.2	11.2	6.6	12.5	15.7	11.4	11.8	4.9	3.9	17.1
Feb-01	1.3	1.9	0.9	3.1	-2.6	-5.7	-1.9	4.4	-8.2	-9.4	3.0
Mar-01	7.7	7.8	10.0	5.5	7.3	7.9	6.7	16.7	-5.9	-8.1	12.6
Apr-01	1.7	3.1	2.6	3.5	-4.1	-5.7	-3.5	4.7	-7.7	-7.6	0.6
May-01	2.8	4.6	3.0	6.3	-5.2	-7.9	-6.6	8.9	-0.6	0.2	6.0
Jun-01	2.5	4.2	4.5	4.0	-4.8	-3.0	-8.8	-2.5	-3.1	-3.5	3.6
Jul-01	-0.1	0.7	2.8	-0.9	-3.4	-2.4	-6.9	-3.5	-6.0	-8.5	4.2
Aug-01	6.5	6.2	4.9	7.1	8.0	14.3	-1.8	-3.9	-4.3	-5.4	3.2
Sep-01	-17.9	-18.6	-20.3	-17.1	-14.8	-13.9	-19.5	2.7	-27.4	-39.2	2.1
Oct-01	-20.9	-21.7	-34.6	-5.6	-16.9	-18.6	-16.0	-11.3	-36.7	-51.5	-3.3
Nov-01	-17.3	-17.0	-27.7	-2.4	-19.6	-26.4	1.8	-30.4	-31.2	-43.3	-3.3
Dec-01	-8.0	-8.8	-22.0	4.2	-4.1	-1.4	-0.4	-18.2	-24.3	-35.1	-2.2
Jan-02	-11.9	-12.8	-26.1	5.0	-7.4	-5.9	0.9	-24.3	-25.9	-41.2	-2.0
Feb-02	-6.1	-7.7	-19.7	4.9	4.0	11.1	5.1	-21.4	-22.7	-34.6	0.5
Mar-02	-12.1	-13.9	-25.1	-1.7	-3.0	-8.3	0.4	-17.9	-21.6	-33.7	-2.8

* Australia, New Zealand, and other South Pacific nations

SOURCE: Statistics Canada

Table 8: Traveller Entries to Canada via BC, Seasonally Adjusted (000s)

Period	International								Canadian		
	Total	USA			Overseas				Total	USA same-day auto	Overseas
		Total*	Same-day	Overnight	Total	Asia	Europe	Oceania**			
1996	6,906.6	5,494.4	2,611.7	2,882.7	1,412.1	778.3	467.5	116.3	13,710.2	9,802.0	670.8
1997	7,322.8	5,892.6	2,798.2	3,094.4	1,430.2	798.0	449.1	122.1	13,427.5	9,328.6	767.3
1998	7,844.6	6,549.0	3,124.2	3,424.7	1,295.7	652.7	449.4	118.2	10,451.3	6,734.9	799.7
1999	8,269.2	6,861.7	3,370.2	3,491.5	1,407.5	716.0	484.6	126.0	9,588.1	5,813.1	798.7
2000	8,496.9	7,018.3	3,398.8	3,607.1	1,478.6	758.9	498.0	133.8	9,443.2	5,647.7	863.6
2001	8,310.0	6,892.0	3,246.8	3,647.8	1,418.0	731.8	466.3	131.9	8,328.6	4,720.3	902.8
Quarterly data											
2000 Q4	2,204.2	1,822.1	893.7	943.9	382.1	199.4	128.0	36.2	2,356.2	1,419.0	222.7
2001 Q1	2,222.8	1,846.2	903.9	931.4	376.5	194.3	121.1	36.8	2,309.1	1,396.8	225.8
2001 Q2	2,153.0	1,794.0	870.8	924.3	359.0	185.0	117.9	34.2	2,236.9	1,304.7	227.5
2001 Q3	2,018.5	1,675.9	814.3	863.3	342.6	181.0	109.9	31.8	2,099.6	1,173.8	227.4
2001 Q4	1,915.7	1,575.8	657.8	928.8	339.9	171.5	117.4	29.2	1,683.0	845.1	222.0
2002 Q1	1,978.5	1,623.1	690.2	939.1	355.4	189.7	121.4	28.4	1,744.4	884.9	227.0
Monthly data											
Nov-00	732.8	605.5	300.4	314.9	127.3	68.8	41.2	12.4	783.5	469.3	72.3
Dec-00	750.9	620.8	301.3	320.9	130.0	64.5	42.5	12.7	765.7	460.6	75.8
Jan-01	753.8	624.8	310.2	311.3	129.0	67.9	41.6	12.9	796.5	501.3	76.0
Feb-01	730.8	609.8	291.4	306.5	121.0	57.9	39.2	12.0	764.5	457.4	74.3
Mar-01	738.2	611.6	302.4	313.7	126.5	68.5	40.4	11.9	748.1	438.1	75.5
Apr-01	728.0	604.4	295.3	311.5	123.6	62.2	42.6	11.7	733.9	429.6	74.8
May-01	715.5	597.8	288.7	309.3	117.7	60.4	38.0	11.7	757.0	437.5	76.8
Jun-01	709.5	591.8	286.7	303.5	117.7	62.3	37.3	11.8	746.0	437.6	75.9
Jul-01	704.2	587.7	293.5	304.3	116.5	61.4	37.1	11.8	754.6	428.6	76.9
Aug-01	710.6	594.5	292.4	305.0	116.1	61.9	37.0	10.9	762.3	448.6	75.4
Sep-01	603.7	493.8	228.3	254.0	109.9	58.1	34.3	10.5	597.7	296.6	75.1
Oct-01	593.6	484.6	196.2	292.5	109.0	56.1	36.8	10.7	536.1	254.9	73.3
Nov-01	629.1	520.7	225.4	301.2	108.4	52.1	40.1	8.9	557.4	280.1	73.1
Dec-01	693.0	570.5	236.2	335.2	117.5	63.2	40.6	10.2	589.6	310.1	75.6
Jan-02	657.8	540.2	239.8	315.7	117.7	62.7	40.7	9.4	580.1	296.0	74.9
Feb-02	672.0	551.8	235.1	317.5	120.2	64.4	40.7	9.4	585.8	299.1	75.4
Mar-02	648.7	531.1	234.4	300.0	117.6	62.6	40.1	9.6	578.6	289.7	76.7
Month-over-month percent changes											
Nov-00	1.7	1.6	2.9	2.2	2.1	4.0	-7.1	11.3	-2.9	-4.0	-3.2
Dec-00	2.5	2.5	0.3	1.9	2.1	-6.3	3.2	2.8	-2.3	-1.9	4.9
Jan-01	0.4	0.6	3.0	-3.0	-0.8	5.3	-2.2	1.2	4.0	8.9	0.2
Feb-01	-3.0	-2.4	-6.1	-1.5	-6.2	-14.7	-5.7	-6.9	-4.0	-8.8	-2.1
Mar-01	1.0	0.3	3.8	2.3	4.6	18.3	3.0	-0.7	-2.1	-4.2	1.6
Apr-01	-1.4	-1.2	-2.3	-0.7	-2.3	-9.2	5.5	-1.3	-1.9	-1.9	-0.9
May-01	-1.7	-1.1	-2.2	-0.7	-4.8	-2.8	-10.8	-0.6	3.2	1.8	2.6
Jun-01	-0.8	-1.0	-0.7	-1.9	0.0	3.1	-1.7	-7.7	-1.5	0.0	-1.1
Jul-01	-0.7	-0.7	2.4	0.3	-1.0	-1.5	-0.2	-1.1	1.1	-2.1	1.3
Aug-01	0.9	1.1	-0.4	0.2	-0.3	0.3	1.2	-2.0	1.0	4.7	-2.0
Sep-01	-15.0	-16.9	-21.9	-16.7	-5.4	-5.7	-7.3	2.1	-23.6	-33.9	-0.3
Oct-01	-1.7	-1.8	-14.1	15.1	-0.8	-3.2	5.2	-5.2	-8.0	-14.1	-2.4
Nov-01	6.0	7.4	14.9	3.0	-0.5	-7.4	9.0	-11.9	4.0	9.9	-0.3
Dec-01	10.2	9.6	4.8	11.3	13.0	21.4	1.2	14.1	5.8	10.7	3.3
Jan-02	-5.1	-5.3	-2.7	-5.8	-4.0	-0.8	0.3	-7.5	-1.6	-4.5	-1.0
Feb-02	2.2	2.1	2.3	0.2	2.3	2.7	0.0	0.0	1.0	1.1	0.8
Mar-02	-3.5	-3.8	-4.1	-3.0	-2.1	-2.8	-1.4	2.1	-1.2	-3.2	1.7

* Seasonal adjustment of total US entries are calculated by Statistics Canada and are adjusted to sum to national totals, therefore same-day plus overnight entries via BC will not necessarily equal the total

** Australia, New Zealand, and other South Pacific nations

SOURCE: BC STATS, Statistics Canada

Table 9: Transportation Indicators (Historical)

Period	Air Passenger Traffic (000s)							Other Transportation (000s)		
	Vancouver				Victoria	Kelowna	Prince George	BC Ferries		Coquihalla Hwy Passenger Vehicles
	Total	Domestic	Trans-border	Other Int'l.				Vehicles	Passengers	
1997	14,819	7,974	3,733	3,111	1,102.8	741.5	312.3	8,104	22,060	2,316
1998	15,508	8,215	4,123	3,170	1,214.2	799.7	322.8	7,822	21,418	2,365
1999	15,806	8,314	4,120	3,372	1,191.4	815.1	352.2	7,852	21,369	2,378
2000	16,033	8,306	4,074	3,652	1,139.2	835.9	392.9	7,887	21,280	2,389
2001	15,477	7,869	4,000	3,608	1,158.2	850.3	361.9	8,102	21,305	2,546
Quarterly data										
2000 Q2	4,082	2,100	1,034	948	292.2	191.3	98.2	2,020	5,437	637
2000 Q3	4,830	2,442	1,240	1,149	303.5	213.7	93.1	2,557	7,440	965
2000 Q4	3,568	1,942	840	785	286.6	210.2	102.1	1,754	4,488	427
2001 Q1	3,637	1,838	966	833	272.7	217.5	93.9	1,600	4,003	369
2001 Q2	4,104	2,097	1,062	945	308.4	207.9	94.9	2,079	5,445	641
2001 Q3	4,641	2,230	1,270	1,141	314.6	223.3	89.4	2,617	7,388	991
2001 Q4	3,095	1,704	702	689	262.5	201.7	83.7	1,806	4,469	448
Monthly data										
Dec-00	1,226	644	309	273	97.6	76.7	33.8	573	1,497	127
Jan-01	1,221	598	321	302	87.1	72.2	30.3	498	1,223	101
Feb-01	1,147	588	314	245	84.0	68.5	29.7	485	1,195	105
Mar-01	1,269	651	332	286	101.6	76.8	34.0	617	1,585	163
Apr-01	1,242	645	306	290	101.7	67.3	31.5	648	1,650	190
May-01	1,382	720	355	307	103.8	69.1	32.3	703	1,849	218
Jun-01	1,481	732	401	348	102.9	71.4	31.0	728	1,946	233
Jul-01	1,679	798	486	395	112.0	77.9	32.3	907	2,600	340
Aug-01	1,800	860	515	425	117.7	80.0	31.2	989	2,890	401
Sep-01	1,162	571	270	241	77.9	58.4	23.9	728	1,898	250
Oct-01	1,065	599	224	214	95.4	65.9	28.8	641	1,590	188
Nov-01	920	477	212	171	77.7	61.0	26.6	568	1,355	122
Dec-01	1,110	588	265	257	89.0	74.7	28.3	597	1,524	138
Jan-01	1,094	580	280	273	76.6	67.2	25.5	497	1,191	97
Feb-02	1,041	521	272	248	78.3	68.4	24.3	498	1,196	105
Mar-02	1,181	583	300	293	95.0	74.6	25.9	609	1,558	162
Apr-02	n/a	n/a	n/a	n/a	n/a	63.5	n/a	639	1,564	169
Year-over-year percent changes										
Dec-00	5.1	1.2	5.9	14.6	10.3	-1.8	-4.9	-2.1	-1.8	-0.8
Jan-01	8.4	3.6	7.3	20.9	11.5	0.3	-6.0	7.8	5.7	8.9
Feb-01	0.3	0.0	1.1	0.1	1.3	-5.3	-10.7	-2.0	-2.2	-2.9
Mar-01	-1.1	-0.7	-5.5	3.6	5.9	0.5	-0.2	3.0	3.2	2.4
Apr-01	-0.1	-0.5	-1.1	2.0	4.0	6.8	-2.4	1.9	-1.7	-0.9
May-01	2.1	3.0	3.3	-1.4	4.5	7.9	-5.6	3.7	1.6	0.6
Jun-01	-0.4	-2.8	5.3	-1.4	8.2	11.2	-2.0	3.1	0.4	1.7
Jul-01	1.6	-2.7	10.1	1.2	11.9	15.0	9.1	2.6	-1.0	-1.0
Aug-01	3.5	-2.6	15.2	3.9	12.5	9.9	-4.3	3.6	1.1	6.8
Sep-01	-19.2	-22.6	-23.4	-8.0	-15.3	-12.6	-16.3	0.4	-2.9	1.5
Oct-01	-15.9	-16.4	-16.5	-14.2	-7.4	-6.2	-17.4	1.4	-2.7	-0.9
Nov-01	-14.4	-11.2	-18.9	-17.4	-9.1	-3.5	-20.5	3.5	-0.1	11.3
Dec-01	-9.5	-8.6	-14.4	-5.9	-8.8	-2.6	-16.2	4.2	1.8	8.3
Jan-01	-10.3	-9.5	-12.6	-9.6	-12.1	-6.9	-15.9	-0.2	-2.6	-4.4
Feb-02	-9.2	-11.4	-13.4	1.4	-6.8	-0.1	-17.9	2.7	0.1	-0.4
Mar-02	-7.0	-9.7	-9.6	2.4	-6.5	-3.0	-23.8	-1.3	-1.7	-0.5
Apr-02	n/a	n/a	n/a	n/a	n/a	-5.7	n/a	-1.4	-5.2	-10.7

Table 10: Tourism sector indicators

Period	Employment (000s) ¹						Hotel Industry ²		Consumer Price Index ¹	
	BC Total	Key industries in tourism sector					Occupancy Rate (%) ³	Room Rate (\$)	Traveller accommodation	Restaurant food
	Industrial aggregate	Air transport	Heritage Institutions	Accommodation	Food & beverage services	Arts, entertainment & recreation				
1995	1,448.4	13.5	2.3	27.6	99.9	30.0	67.7	91.94	107.7	118.2
1996	1,462.8	12.9	2.3	31.2	100.9	29.9	68.2	99.89	109.4	126.9
1997	1,499.7	14.4	2.2	30.5	106.8	29.5	66.1	106.04	111.6	141.8
1998	1,511.2	15.9	2.3	29.4	109.6	27.3	61.9	108.59	113.9	152.6
1999	1,513.9	15.3	2.3	29.2	110.1	24.7	61.7	112.02	115.6	166.2
2000	1,574.3	14.8	2.3	28.2	116.7	26.5	60.0	114.04	117.6	171.3
2001	1,595.8	13.5	2.4	29.5	117.8	27.4	58.8	115.59	121.3	173.4
Quarterly data										
2000 Q1	1,515.9	14.6	2.2	25.7	110.3	25.9	53.3	111.88	116.6	164.4
2000 Q2	1,582.5	14.7	2.3	28.3	117.9	26.7	61.4	110.81	117.4	172.8
2000 Q3	1,593.8	14.5	2.4	30.9	121.0	26.8	75.6	130.63	117.9	181.0
2000 Q4	1,605.0	15.4	2.3	27.7	117.5	26.5	49.5	121.12	118.6	167.0
2001 Q1	1,573.9	14.3	2.3	25.9	115.5	26.5	54.8	116.66	119.7	163.9
2001 Q2	4,823.6	42.8	7.2	90.1	359.6	82.0	60.8	112.52	120.5	163.8
2001 Q3	4,811.2	40.0	7.5	99.1	362.3	85.0	73.2	130.88	122.0	187.8
2001 Q4	4,792.4	36.5	7.2	86.8	344.9	82.2	46.2	102.28	123.1	178.1
Monthly data										
Sep-00	1,612.9	14.6	2.4	30.0	120.6	26.4	74.5	125.45	117.9	180.4
Oct-00	1,613.6	14.6	2.4	28.5	120.7	26.8	56.9	103.87	118.3	169.8
Nov-00	1,606.8	15.3	2.3	27.5	115.7	25.7	49.1	92.28	118.4	169.4
Dec-00	1,594.7	16.3	2.3	27.3	116.0	26.9	42.6	112.38	119.0	161.8
Jan-01	1,570.1	14.3	2.3	26.4	115.9	26.1	45.4	114.69	119.4	164.1
Feb-01	1,572.9	14.3	2.3	25.5	114.7	26.6	55.1	117.83	119.9	171.6
Mar-01	1,578.8	14.3	2.4	25.7	115.8	26.8	3.9	117.45	119.9	155.9
Apr-01	1,586.9	14.9	2.4	26.5	117.6	27.2	1.3	106.07	120.2	160.2
May-01	1,609.8	14.4	2.4	30.5	120.5	27.3	1.1	114.87	120.6	160.4
Jun-01	1,627.0	13.5	2.5	33.1	121.7	27.7	5.1	116.62	120.8	170.9
Jul-01	1,597.7	13.3	2.5	33.5	121.3	27.7	7.1	136.70	121.5	188.6
Aug-01	1,598.5	13.5	2.5	33.8	121.4	28.1	79.9	136.77	122.1	189.7
Sep-01	1,615.0	13.2	2.5	32.8	119.6	28.1	64.6	119.18	122.3	185.0
Oct-01	1,617.1	13.9	2.5	32.9	119.9	28.2	51.3	100.77	122.9	180.8
Nov-01	1,594.6	11.8	2.4	28.6	117.1	27.1	45.3	94.08	123.0	174.5
Dec-01	1,580.7	11.8	2.4	27.8	112.9	27.0	42.0	111.99	123.3	179.1
Jan-02	1,569.4	11.7	2.4	27.6	112.1	26.9	43.5	112.69	124.1	171.0
Feb-02	1,572.8	11.7	2.4	27.3	110.6	27.4	54.7	119.08	124.4	170.9
Mar-02	1,585.6	11.7	2.4	27.4	112.0	27.6	58.9	120.90	124.6	174.1
Year-over-year percent changes										
Sep-00	5.0	3.0	-2.9	-4.3	8.2	7.4	0.6	2.1	1.8	5.9
Oct-00	4.5	6.0	-2.0	2.9	4.6	7.2	1.3	4.2	1.4	1.3
Nov-00	5.5	7.8	1.0	6.5	4.9	10.9	1.5	2.3	1.5	3.2
Dec-00	5.0	8.4	1.5	7.9	4.9	8.7	1.6	3.6	2.2	-7.3
Jan-01	4.2	-0.8	1.6	4.0	3.5	2.3	1.0	3.9	2.6	2.8
Feb-01	4.4	-2.9	5.5	-0.1	6.3	3.4	1.6	4.5	2.9	2.7
Mar-01	2.9	-3.0	5.5	-2.1	4.3	1.8	1.8	4.5	2.7	-6.4
Apr-01	1.8	-2.9	5.1	-1.6	2.5	2.5	-1.1	0.3	2.8	-6.8
May-01	2.0	-3.1	5.3	9.0	1.2	2.1	-0.9	1.3	2.7	-8.6
Jun-01	1.0	-3.2	6.4	10.2	1.3	2.9	-0.3	2.9	2.5	-0.2
Jul-01	0.8	-7.1	6.2	7.7	0.1	4.1	0.9	3.2	3.1	3.5
Aug-01	0.9	-6.7	6.1	6.7	0.0	5.7	2.7	2.0	3.7	5.2
Sep-01	0.1	-9.7	4.4	5.8	-0.8	6.9	-13.3	-5.0	3.7	2.5
Oct-01	0.2	-11.6	4.3	7.1	-1.5	5.3	-9.8	-3.0	3.9	6.5
Nov-01	-0.8	-23.0	4.2	3.7	-2.2	5.4	-7.7	2.0	3.9	3.0
Dec-01	-0.9	-27.7	3.0	1.8	-2.6	0.3	-1.4	-0.3	3.6	10.7
Jan-02	0.0	-19.4	2.9	4.7	-3.3	3.2	-4.2	-1.7	3.9	4.2
Feb-02	0.0	-18.0	2.7	6.8	-3.5	3.0	-0.7	1.1	3.8	-0.4
Mar-02	0.4	-18.5	1.5	6.9	-3.2	2.8	-7.8	2.9	3.9	11.7

¹Source: Statistics Canada (Employment data from Survey of Employment Payroll & Hours)

²Source: Pannell Kerr Forster

³Occupancy Rate change expressed as percentage point change

Table 11: BC Restaurant and Tavern Receipts

Period	Restaurant and Taverns ¹						
	BC	Receipts (\$ million)					
		Total locations	Total	Full service	Limited service	Food service contractors	Social & mobile caterers
1996	8,789	4,054.6	2,029.2	1,323.3	193.1	56.7	284.7
1997	8,751	4,335.2	2,194.8	1,444.5	209.8	60.8	339.9
1998	8,718	4,641.0	2,377.0	1,571.2	227.7	66.3	398.8
1999	8,606	4,467.5	2,188.8	1,616.5	214.3	78.2	369.8
2000	9,060	4,831.5	2,482.6	1,640.1	256.5	93.4	358.9
2001	8,706	5,176.3	2,762.5	1,690.1	274.1	91.6	357.9
Quarterly data							
2000 Q1	8,756	1,084.7	557.0	368.8	60.7	18.4	79.7
2000 Q2	9,054	1,218.7	619.9	423.3	55.7	23.8	95.9
2000 Q3	9,248	1,331.1	693.4	444.8	67.3	25.9	99.7
2000 Q4	9,182	1,197.0	612.3	403.3	72.7	25.2	83.5
2001 Q1	8,817	1,227.8	666.4	380.5	81.3	18.6	81.0
2001 Q2	8,628	1,312.7	689.2	442.0	62.7	22.6	96.1
2001 Q3	8,843	1,405.7	760.4	454.5	68.5	24.7	97.6
2001 Q4	8,538	1,230.1	646.5	413.0	61.6	25.8	83.2
Monthly data							
Aug-00	9,163	459.0	243.3	151.6	21.9	9.0	33.3
Sep-00	9,329	421.8	214.8	140.6	23.9	8.9	33.5
Oct-00	9,269	401.1	201.2	136.0	25.0	8.3	30.6
Nov-00	9,103	382.8	195.6	130.7	23.6	6.8	26.1
Dec-00	9,175	413.1	215.5	136.6	24.1	10.1	26.8
Jan-01	9,013	398.3	216.9	122.5	28.1	5.9	24.8
Feb-01	8,882	387.2	209.5	118.9	25.9	7.1	25.8
Mar-01	8,555	442.2	239.9	139.1	27.3	6.9	30.3
Apr-01	8,592	420.1	225.8	135.7	21.1	6.1	31.3
May-01	8,617	436.6	224.2	152.0	20.2	8.9	32.3
Jun-01	8,674	456.1	239.2	153.3	21.4	8.6	32.6
Jul-01	8,797	478.4	257.3	153.3	23.2	6.9	35.2
Aug-01	8,848	494.0	272.3	153.4	23.3	6.8	32.5
Sep-01	8,883	492.9	272.3	141.3	22.9	10.1	29.9
Oct-01	8,777	401.0	210.7	136.5	21.3	8.5	29.9
Nov-01	8,507	392.7	204.7	132.2	19.4	7.1	26.8
Dec-01	8,318	431.1	232.2	141.3	20.9	10.2	26.6
Jan-02	8,223	384.1	203.7	125.8	23.4	7.0	24.3
Feb-02	8,221	366.1	210.9	126.7	24.9	7.9	25.8
Mar-02	8,155	434.6	233.7	140.0	24.5	7.3	29.1
Year-over-year percent changes							
Aug-00	5.1	8.1	15.3	-3.2	27.6	8.8	6.0
Sep-00	9.0	10.5	16.5	2.3	20.3	9.6	5.5
Oct-00	8.2	10.2	15.2	2.6	26.3	18.7	1.5
Nov-00	4.0	12.7	18.2	5.0	36.7	26.0	-3.2
Dec-00	3.2	12.8	18.0	4.4	33.8	39.8	-3.2
Jan-01	5.4	18.5	26.7	4.5	54.4	10.5	3.2
Feb-01	1.7	9.4	15.4	-0.9	27.4	8.4	1.9
Mar-01	-4.8	12.0	17.5	5.7	22.8	-14.5	0.1
Apr-01	-4.9	7.1	11.6	1.3	20.5	-15.6	0.9
May-01	-4.4	8.4	11.3	6.7	13.8	-2.7	-1.6
Jun-01	-4.8	7.6	10.7	5.1	4.5	2.1	1.5
Jul-01	-4.9	6.2	10.2	0.8	7.9	-13.5	6.7
Aug-01	-3.4	7.6	11.5	5.1	6.2	-14.9	-2.3
Sep-01	-4.8	2.7	7.0	0.5	-7.8	13.1	-10.8
Oct-01	-6.1	1.3	4.4	0.4	-14.8	2.1	-2.3
Nov-01	-5.5	2.6	4.4	3.5	-17.9	4.8	2.6
Dec-01	-9.4	4.4	7.8	3.5	-13.3	0.2	-1.0
Jan-02	-8.7	-3.6	-6.1	2.7	-16.9	18.1	-2.1
Feb-02	-6.3	2.3	0.6	6.6	-3.9	12.0	-0.3
Mar-02	-2.7	-1.7	-2.6	0.7	-10.2	30.5	-4.2

¹Source: Statistics Canada

Note: with the change to NAICS (North American Industry Classification System) coding, many of the series are not available prior to January 1999.